

GOLDEN BAY

Our Unique Landscape Vision



Life
YOUR WAY



Government of Western Australia
Department of Communities

PEET

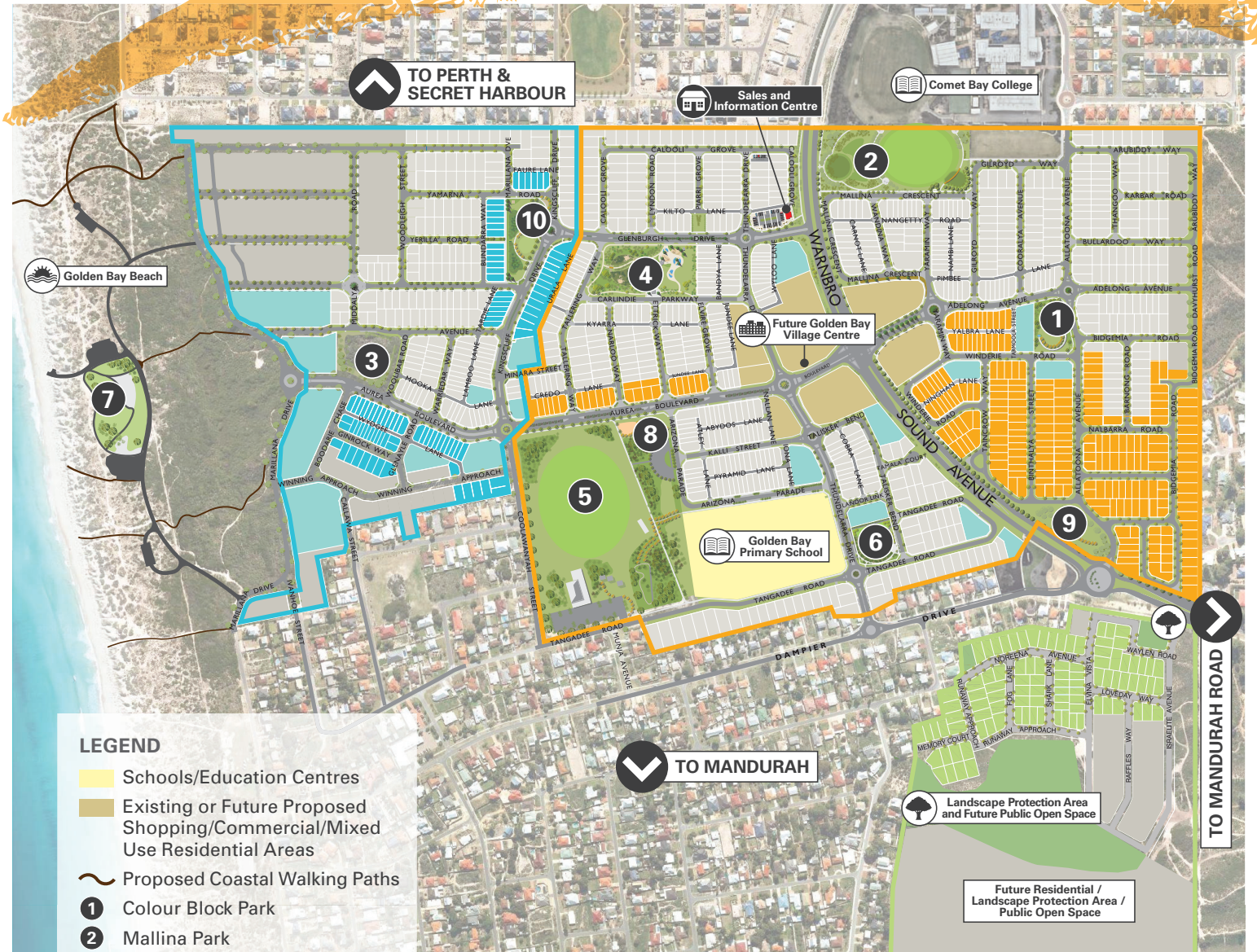


A park to suit every taste.

Whether it's an afternoon game of footy, a leisurely stroll with ocean views or letting the kids run wild, you'll discover many opportunities to enjoy your local parks in Golden Bay. Ample recreational lawn areas provide an open field for keeping active. State-of-the-art play equipment with nature play areas and an extensive skate park will ensure the kids are kept busy and engaged. For fitness fanatics Allatoona Park is the place to be with a variety of gym equipment that is sure to satisfy even the most avid gym junkie. For those who prefer a slower pace, there are stunning viewing decks and pathways perfect for that romantic sunset walk and BBQ facilities with shaded and grassed areas, giving you plenty of room to entertain.

The parks at Golden Bay are designed to integrate the natural environment as well as use sustainable practices and principles during the build. Special efforts were made to rehabilitate and incorporate the natural landscape and vegetation into the design while sustainable practices protected the flora and fauna in the area. Additionally, consultation sessions have taken place for some parks to ensure that these spaces are suited to various lifestyles of the Golden Bay community.





LEGEND

- Schools/Education Centres
- Existing or Future Proposed Shopping/Commercial/Mixed Use Residential Areas
- Proposed Coastal Walking Paths
- 1** Colour Block Park
- 2** Mallina Park
- 3** Sunset Hill Park
- 4** Carlindie Parkway
- 5** Rhonda Scarrott Reserve
- 6** Sam Silla Reserve
- 7** Future Foreshore Park
- 8** Daniel Kelley Skate Park
- 9** Allatoona Park
- 10** Kingscliff Park



The information shown on this plan has been prepared with care; however, it is subject to change and cannot form part of any offer or contract. Whilst every reasonable care has been taken in preparing this information, the seller or its representative or agent cannot be held responsible for any inaccuracies. Interested parties must be sure to undertake their own independent enquiries. Lot information is subject to survey and Titles Office approval. Rendered images are artist's impression only and subject to change.

1 Colour Block Park

This exciting, custom-designed park delivers a host of facilities for adults and kids alike. A landmark feature of the park is the unique playground, home to large distinctive coloured building blocks, three trampolines, a tunnel slide, a life-sized block tractor and more!



2 Mallina Park

Featuring a spectacular playground with a rock climbing wall, climbing tree, fireman's pole, sandpit, slide, tyre swing and more, this park is a favourite with kids of all ages. Mallina Park also boasts a football oval, perfect for games of footy and soccer, or group fitness sessions.

3 Sunset Hill Park

Sunset Hill Park opened in spring 2015, offering stunning ocean views, picnic and BBQ facilities and plenty of sheltered spots. The park also boasts an impressive nature play area for the kids, including a dual flying fox, tree hut, rope bridges, birds nest swing, xylophone and more.



④ Carlindie Parkway

Carlindie Parkway is a 1.3ha beach-themed park featuring a 'wave' slide, surfboard balancing play equipment, football goals, half basketball court, as well as BBQ and picnic facilities.



⑤ Rhonda Scarrott Reserve

Located between Aurea Boulevard and Tangadee Road, Rhonda Scarrott Reserve boasts two playing grounds for football and cricket, a Community Centre, BBQ facilities and a state-of-the-art sports pavilion, built by the City of Rockingham.



6 Sam Silla Reserve

This park features a large playground for the kids to run off some energy. A shaded picnic area with tables provides a popular spot for weekend picnics with family and friends, assisted by the park's central location within the community.



7 Future Foreshore Park

Development plans are underway for the future Foreshore Park, which will be 1.5 hectares of coastal fun.

Located just 60 meters from the beach, the space will feature a large nautical-themed playground, scooter and BMX tracks, a separate enclosed toddler playground for little ones and ample grass and landscaped areas for the whole community to enjoy.

10 Kingscliff Park

Kingscliff Park is a family favourite with trampolines, swings and a sand play area in the playground to keep the kids entertained. The park also features a seating space with shaded area, making it the perfect location to pack a picnic and make a day of it.



8 Daniel Kelly Skate Park

Named after a young local leader who rallied the community to develop a skate park but who sadly passed away from sudden illness in 2002, the Daniel Kelly Skate Park was created to continue his legacy. Located adjacent to Rhonda Scarrott Reserve, this is the place to be for those on skateboards, BMX bikes or scooters with a variety of ramps to suit all abilities.



9 Allatoona Park

Community members can enjoy grassed areas, shade structures and soccer goals to test out their foot work. Fitness fanatics will also be pleased with a great range of public fitness equipment including monkey bars, chin-up bars, rings and an abdominal-strengthening swing. This will be sure to shake up anyone's routine.





SALES AND INFORMATION CENTRE

4 Glenburgh Drive, Golden Bay

Opening Hours: Saturday–Wednesday 1pm–5pm

Phone: 0438 387 449

goldenbay.com.au

Life
YOUR WAY



Government of Western Australia
Department of Communities

PEET