

Planning and Environment Act 1987
Wyndham Planning Scheme

Approved Plan As Required
under Condition 35
Permit No WYP6865/13
Date 27/07/2020

NEWHAVEN ESTATE STAGE 8 PEET 1985 PTY LTD

GENERAL NOTES:

- ALL LEVELS ARE TO AUSTRALIAN HEIGHT DATUM AND ALL COORDINATES ARE TO MAP GRID OF AUSTRALIA (MGA) ZONE 55.
- ALL EXISTING SURFACE LEVELS SHOWN ON THE ENGINEERING DRAWINGS HAVE BEEN INTERPOLATED FROM A DIGITAL TERRAIN MODEL. THESE LEVELS HAVE BEEN USED AS THE BASIS FOR ALL ENGINEERING DESIGN AND DETERMINATION OF QUANTITIES AND ARE ACCURATE TO WITHIN ±0.05m.
- ALL WORKS TO BE CARRIED OUT IN ACCORDANCE WITH PEET'S MODIFIED AS4000-1997 - AMENDED FROM GENERAL CONDITIONS OF CONTRACT FOR USE IN VICTORIA, THE ROAD & DRAINAGE SPECIFICATION, APPROVED MUNICIPALITY SPECIFICATIONS AND STANDARD DRAWINGS AND TO THE SATISFACTION OF THE SUPERINTENDENT AND THE MUNICIPAL ENGINEER OR HIS REPRESENTATIVE.
- ROAD CHAINAGES REFER TO ROAD CENTRELINES. CHAINAGES FOR INTERSECTIONS AND CUL-DE-SACS REFER TO THE LIP OF KERB
- THE LOCATION OF EXISTING SERVICES SHOULD BE DETERMINED BY THE CONTRACTOR PRIOR TO COMMENCING ANY EXCAVATION BY CONTACTING ALL LOCAL SERVICE AUTHORITIES. ANY EXISTING SERVICES SHOWN ON THESE DRAWINGS ARE OFFERED AS A GUIDE ONLY AND ARE NOT GUARANTEED AS CORRECT.
- WHERE REQUIRED ANY BUILDINGS, TROUGHS, FENCES AND OTHER STRUCTURES ON SITE ARE TO BE REMOVED AS DIRECTED BY THE ENGINEER. THE COST OF REMOVAL IS TO BE INCLUDED IN THE OVERALL EARTHWORKS FIGURE UNLESS A SPECIFIC ITEM FOR REMOVAL IS DENOTED IN THE SCHEDULE.
- ALL EXCAVATED ROCK AND SURPLUS SPOIL TO BE REMOVED AND DISPOSED OFF SITE UNLESS NOTED OTHERWISE.
- ALL FILLING ON LOTS AND WITHIN ROAD RESERVES GREATER THAN 200mm IS TO BE UNDERTAKEN USING LEVEL 1 SUPERVISION AND BE COMPLETED IN ACCORDANCE WITH AS 3798-2007. FILL AREAS ARE TO BE STRIPPED OF TOPSOIL, FILLED AND REPLACED WITH TOPSOIL (WHERE REQUIRED) TO OBTAIN THE FINAL LEVELS SHOWN ON THE DRAWINGS.
- FILLING MATERIAL IS TO BE IN ACCORDANCE WITH THE SPECIFICATION, AS 3798-2007 & TO THE SATISFACTION OF COUNCIL AND THE SUPERINTENDENT.
- ALL BATTERS SHALL BE 1 IN 6, UNLESS OTHERWISE SHOWN.
- NO FILL OR STOCKPILING OF MATERIAL IS TO BE PLACED ON ANY RESERVE FOR PUBLIC OPEN SPACE UNLESS OTHERWISE DIRECTED OR APPROVED BY THE SUPERINTENDENT.
- TBM'S TO BE RE-ESTABLISHED BY THE LICENSED SURVEYOR IF FOUND TO BE MISSING AT THE COMMENCEMENT OF CONSTRUCTION. THE CONTRACTOR WILL BE RESPONSIBLE FOR CARE AND MAINTENANCE OF T.B.M.'S THEREAFTER.
- AT LEAST 3 DAYS PRIOR TO COMMENCING WORK ON EXCAVATIONS IN EXCESS OF 1.50m DEEP, A NOTIFICATION FORM MUST BE SENT TO WORKSAFE. THE CONTRACTOR IS TO COMPLY WITH WORKSAFE, THE MINES (TRENCHES) REGULATION 1982, THE MINES ACT 1958 AND OCCUPATIONAL HEALTH AND SAFETY ACT 1985, 2004.
- ALL SERVICE TRENCHES UNDER DRIVEWAYS, FOOTPATHS AND PARKING BAYS TO BE BACKFILLED WITH CLASS 2 CRUSHED ROCK. SERVICE TRENCHES LESS THAN 750mm BEHIND KERB AND CHANNEL OR PAVED TRAFFIC AREAS ARE ALSO TO BE BACKFILLED WITH COMPACTED CLASS 2 CRUSHED ROCK.
- WHERE REQUIRED, ALL EXISTING DAMS, DEPRESSIONS AND DRAINS ARE TO BE BREACHED, DRAINED, DESLUDGED AND SHALL BE EXCAVATED TO A CLEAN FIRM BASE. THE SURFACE SHALL BE INSPECTED, APPROVED AND LEVELED BY THE ENGINEER PRIOR TO COMMENCEMENT OF FILLING. THE FILL SHALL BE APPROVED SELECTED ON SITE MATERIAL OR APPROVED IMPORTED MATERIAL. THE FILL SHALL BE PLACED UNDER CONTROLLED MOISTURE CONDITIONS IN ACCORDANCE WITH THE SPECIFICATION
- NO BLASTING TO BE CARRIED OUT WITHIN THE MUNICIPALITY WITHOUT OBTAINING COUNCIL'S PERMISSION.
- GAS AND WATER CONDUITS ARE TO BE . Ø50mm . CLASS 12 P.V.C. - SINGLE SERVICE Ø100mm . CLASS 12 P.V.C. - DUAL SERVICE (DRINKING AND NON DRINKING WATER) WITH THE FOLLOWING MINIMUM COVER TO FINISHED SURFACE LEVELS:
ROAD PAVEMENT - 0.80m
VERGE, FOOTPATHS - 0.45m
- ALL SERVICE CONDUIT TRENCHES UNDER ROAD PAVEMENTS TO BE BACKFILLED IN ACCORDANCE WITH RELEVANT MUNICIPALITY OR ROAD AUTHORITY SPECIFICATION.
- AG/SUBSOIL DRAIN TO BE LAID BEHIND KERB WHERE REQUIRED IN ACCORDANCE WITH THE COUNCIL STANDARD DRAWINGS AND CONNECTED TO UNDERGROUND DRAINAGE.
- ALL STORMWATER DRAINS ARE TO BE CLASS '2' R.C. PIPES UNLESS OTHERWISE SHOWN. ALL R.C. JOINTS ARE TO BE RUBBER RING JOINTED (R.R.J.).
- CENTRELINES OF ALL EASEMENT DRAINS ARE OFFSET 1.0m OR 2.2m (WHERE OUTSIDE OF SEWER) FROM THE PROPERTY LINE UNLESS SHOWN OTHERWISE.
- WHERE CURVED PIPE ALIGNMENTS ARE SHOWN ON THE FACE PLANS THEY ARE TO BE LAID PARALLEL TO THE BACK OF KERB, EXCEPT WHERE A RADIUS HAS BEEN SPECIFICALLY NOMINATED. CURVED PIPES ARE TO BE APPROVED BY COUNCIL AND IN ACCORDANCE WITH THE MANUFACTURERS SPECIFICATIONS.
- WATER TAPPINGS TO BE LOCATED IN CENTRE OF ALLOTMENTS UNLESS OTHERWISE SHOWN.
- TELSTRA IS TO BE NOTIFIED 7 DAYS PRIOR TO PLACEMENT OF CONCRETE WORKS.
- PAVEMENT DEPTHS MAY BE MODIFIED AS DIRECTED BY THE SUPERINTENDENT.

- PAVEMENT TO BE BOXED OUT TO MINIMUM DEPTH DENOTED, INSPECTED AND IF SUBGRADE IS IN QUESTION, FURTHER TESTING CARRIED OUT TO DETERMINE FINAL PAVEMENT DEPTH.
- WHERE PAVEMENT IS CONSTRUCTED ON FILLING, FILL MATERIAL IS TO BE APPROVED BY THE SUPERINTENDENT AND COUNCIL. FILLING TO BE CONSTRUCTED IN LAYERS 150mm THICK WITH COMPACTION ACHIEVING 95% AUSTRALIAN STANDARD DENSITY.
- WHEN PAVEMENT EXCAVATION IS IN ROCK, ALL LOOSE MATERIAL (INCLUDING ROCKS AND CLAY) MUST BE REMOVED. THE SUB-GRADE MUST THEN BE REGULATED WITH COUNCIL APPROVED MATERIAL.
- LINEMARKING AND SIGNAGE TO BE INSTALLED IN ACCORDANCE WITH AS 1742 SERIES UNLESS NOTED OTHERWISE. STREET SIGNS ARE TO BE INSTALLED IN ACCORDANCE WITH COUNCIL STANDARDS.
- ALL TEMPORARY WARNING SIGNS USED DURING CONSTRUCTION SHALL BE SUPPLIED AND MAINTAINED IN ACCORDANCE WITH AS 1742-3.
- TACTILE GROUND SURFACE INDICATORS ARE TO BE INSTALLED IN ACCORDANCE WITH THE DISABILITY DISCRIMINATION ACT AND RELEVANT COUNCIL STANDARD DRAWINGS.
- CONTRACTOR TO PROVIDE AN ENVIRONMENTAL MANAGEMENT PLAN INCLUDING SILT AND SEDIMENT RUNOFF PROTECTION ETC. PRIOR TO THE COMMENCEMENT OF WORKS.
- ALL TREES AND SHRUBS ARE TO BE RETAINED UNLESS OTHERWISE SHOWN. IF ROAD AND DRAINAGE CONSTRUCTION NECESSITATES THEIR REMOVAL, WRITTEN PERMISSION MUST BE OBTAINED FROM THE SUPERINTENDENT.
- TREES NOT SPECIFIED FOR REMOVAL ARE TO BE PROTECTED WITH APPROPRIATE EXCLUSION FENCING PRIOR TO COMMENCEMENT OF ANY WORKS.

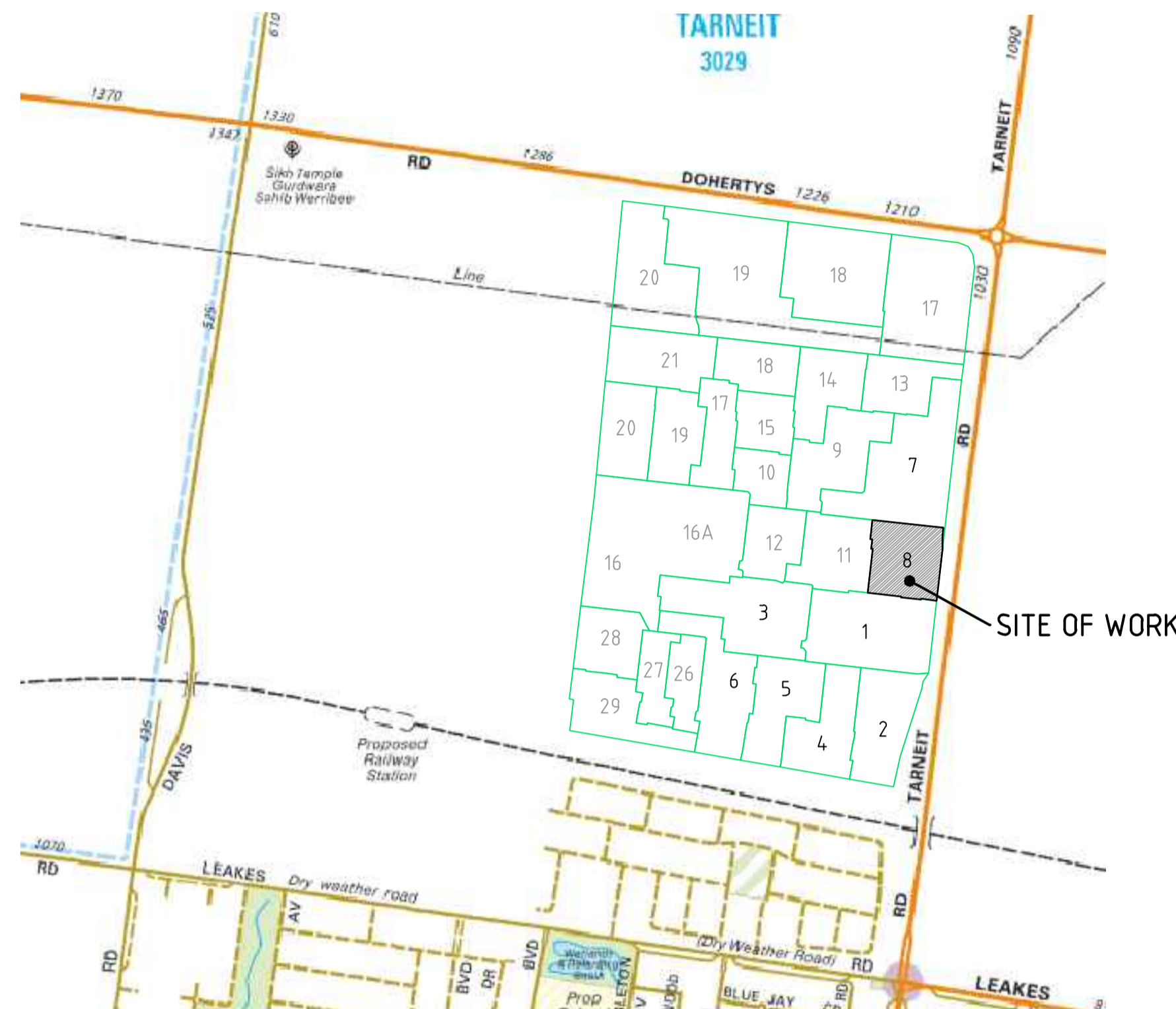
DRAWING SCHEDULE

REFERENCE	DESCRIPTION	REVISION	SHEET No.
CR100	ROAD & DRAINAGE FACE SHEET	6	1
CR200	FACE PLAN	7	2
CR201	SERVICES PLAN	6	3
CR300	ROAD LONGITUDINAL SECTIONS	4	4
CR301	ROAD & SHARED PATH LONGITUDINAL SECTIONS	3	5
CR302	SHEET REMOVED FROM SET	-	-
CR400	ROAD CROSS SECTIONS	3	6
CR401	ROAD CROSS SECTIONS	3	7
CR402	ROAD CROSS SECTIONS	4	8
CR403	SHEET REMOVED FROM SET	-	-
CR500	INTERSECTION DETAILS	4	9
CR600	DRAINAGE LONG SECTIONS	3	10
CR601	DRAINAGE LONG SECTIONS	5	11
CR602	DRAINAGE LONG SECTIONS	5	12
CR700	PAVEMENT AND TYPICAL DETAILS	4	13
CR800	SIGNAGE AND LINEMARKING	5	14

SERVICE LOCATION TABLE

ROAD NAME	POTABLE WATER		RECYCLED WATER		GAS		NBN (TELECOM)		NBN (EXPRESS)		ELECTRICITY				TREE	
	SIDE	OFFSET	SIDE	OFFSET	SIDE	OFFSET	SIDE	OFFSET	SIDE	OFFSET	POLE		U/G CABLE		SIDE	OFFSET
											SIDE	OFFSET	SIDE	OFFSET		
DEBUT AVENUE (16.0m)	W	2.90	W	2.42	W	2.00	E	1.83	-	-	E	1.1 x#	E	2.55	BOTH	1.00x
FRONTIER CIRCUIT (E/W) (16.0m)	N	2.90	N	2.42	N	2.00	S	1.83	-	-	E	1.1 x#	S	2.55	BOTH	1.00x
FRONTIER CIRCUIT (N/S) (13.5m)	W	3.35	W	2.85	W	2.40	W	1.85	-	-	E	1.0 x#	E	0.50	BOTH	1.00x
CULTURE LANE (16.0m)	W	2.90	W	2.42	W	2.00	E	1.83	-	-	E	1.1 x#	E	2.55	BOTH	1.00x

- TELECOMMUNICATIONS AND ELECTRICITY CABLES TO BE CONSTRUCTED IN A COMMON TRENCH IN ACCORDANCE WITH ELECTRICITY AUTHORITY STANDARD DRG'S.
- x = OFFSET 0.8m FROM BACK OF KERB UNLESS OTHERWISE STATED. REFER ELECTRICAL DESIGN DRAWINGS
- # = BEHIND BACK OF KERB



COPYRIGHT MELWAY PUBLISHING PTY LTD
REPRODUCED WITH PERMISSION

LOCALITY PLAN

SCALE: NOT TO SCALE
MELWAY: 359 B11

DESCRIPTION	EXISTING	PROPOSED
WATER MAIN, VALVE AND HYDRANT	DW - X - ⊕	DW
WATER RECYCLED	NDW	NDW
UNDERGROUND ELECTRICITY	E	E
OVERHEAD ELECTRICITY & POLE	OE	OE
TELSTRA & SERVICE PIT	T	T
OPTIC FIBRE	OF	OF
OVERHEAD TELSTRA	OT	OT
GAS MAIN	G	G
BRANCH SEWER & MANHOLE	S	S
SEWER & MANHOLE	S	S
SEWER RISING MAIN	SRM	SRM
CENTRAL INVERT	>	>
COUNCIL STORMWATER DRAIN & PIT	SD	SD
STORMWATER DRAINAGE PROPERTY INLETS	SD	SD
COUNCIL STORMWATER PITS	SD	SD
HOUSE DRAIN	H	H
AG DRAIN AND FLUSHER	AG	AG
MWC STORMWATER DRAIN & PIT	SD	SD
MWC STORMWATER PITS	SD	SD
STORMWATER DRAINAGE PIT NUMBER	1	1
GAS & WATER CONDUITS	GW	GW
CONCRETE VEHICLE CROSSING	VC	VC
INDUSTRIAL CONCRETE VEHICLE CROSSING	VC	VC
PAVEMENT SAWCUT LINE	SAWCUT	SAWCUT
RIDGE / CHANGE OF GRADE LINE	---	---
SURFACE CONTOUR MINOR (0.25m INT.)	- 168.90 -	168.90
SURFACE CONTOUR MAJOR	- 169.00 -	169.00
SURFACE LEVEL	E123.45	F124.68
BATTER LEVEL (TOP / TOE)	T124.80	T124.80
EARTHWORKS GRADE	1 in 150	1 in 150
SIGN AND POST	SP	SP
LIGHT & POLE (BY OTHERS)	LP	LP
STREET SIGN	SS	SS
PERMANENT SURVEY MARK	SM	SM
TEMPORARY BENCH MARK	TBM	TBM
BOLLARD	B	B
ROAD CHAINAGES	CH116.57 (L/R)TP CH116.57	CH116.57 (L/R)TP CH116.57
LOT CHAINAGE	CH20.06	CH20.06
SETOUT POINT	SP	A2
LIMIT OF WORKS	---	---
BATTER	B	B
EXCAVATION GREATER THAN 0.20m	---	---
FILLING GREATER THAN 0.20m	---	---
FILL EXTENTS	---	---
FENCES	F	F
TREE (& SURVEYED CANOPY) TO BE RETAINED	T	T
TREE TO BE REMOVED	T	T
VEGETATION LINE	VL	VL
FOOTPATH	FP	FP
HEAVY DUTY CONCRETE FOOTPATH (200mm)	FP	FP



WARNING
BEWARE OF UNDERGROUND/OVERHEAD SERVICES
THE LOCATION OF SERVICES ARE APPROXIMATE ONLY AND THEIR EXACT POSITION SHOULD BE PROVEN ON SITE. NO GUARANTEE IS GIVEN THAT ALL EXISTING SERVICES ARE SHOWN. SPECIAL CONSIDERATION SHOULD BE GIVEN TO CONSTRUCTION PROCEDURES UNDER OVERHEAD ELECTRICITY TRANSMISSION LINES.

file name: 303440CR100 - REV 2 - DETONED.dwg, layout: 0000_C0100 - Plot1.dwg, created by: George, Xcyringhis, file location: G:\303440\AutoCAD\plot\09/07/2020 10:24 AM, sheet: 1 of 14 sheets

Rev	Amendments	Approved	Date
6	ISSUED FOR CONSTRUCTION	M.H.	09-07-20
5	AMENDMENTS TO UTILITIES CORRIDOR	MH	25-05-20
4	AS CONSTRUCTED	MH	06-12-19
3	DRIVEWAY AMENDED, RELOCATED GAS WATER CONDUITS	M.H.	12-08-19
2	AMENDMENT TO STAGE BOUNDARY 8 & 11	M.H.	01-03-19
1	RESEQUENCING OF STAGES 8 & 9	M.H.	13-11-18
0	ISSUED FOR CONSTRUCTION	J.S.	27-06-18
F	CHANGES TO LOT MIX	J.S.	08-06-18

AS/NZS 5000
© Spiire Australia Pty Ltd All Rights Reserved
This document is produced by Spiire Australia Pty Ltd solely for the benefit of and use by the client in accordance with the terms of the retainer. Spiire Australia Pty Ltd does not and shall not assume any responsibility or liability whatsoever to any third party arising out of any use or reliance by third party on the content of this document.

spiire
414 La Trobe Street PO Box 16084 Melbourne
Victoria 8007 Australia T 61 3 9993 7888
spiire.com.au ABN 55 050 029 635

PEET
Designed
H. SPURLING
Authorised
M. HOLMES
Checked
B. MUGRIDGE
Date
01-03-19

**NEWHAVEN ESTATE
STAGE 8
ROAD & DRAINAGE
FACE SHEET**
WYNDHAM CITY COUNCIL
PEET 1985 PTY LTD
CONSTRUCTION Drg No 303440CR100 Rev 6

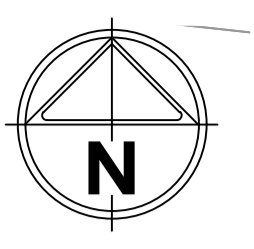
WARNING
BEWARE OF TRANSMISSION LINES
TRANSMISSION POWER LINES IN CLOSE PROXIMITY OF WORKS, INDUCED ELECTRICAL CURRENTS MAY OCCUR. APPROPRIATE SAFETY MEASURES TO BE CARRIED OUT.

WARNING
BEWARE OF UNDERGROUND/OVERHEAD SERVICES
THE LOCATION OF SERVICES ARE APPROXIMATE ONLY AND THEIR EXACT POSITION SHOULD BE PROVEN ON SITE. NO GUARANTEE IS GIVEN THAT ALL EXISTING SERVICES ARE SHOWN. SPECIAL CONSIDERATION SHOULD BE GIVEN TO CONSTRUCTION PROCEDURES UNDER OVERHEAD ELECTRICITY TRANSMISSION LINES.

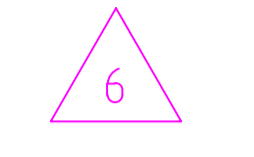
WORKS ON OR NEAR BARWON WATER ASSETS - CONTRACTOR TO REFER TO BARWON WATER'S CUSTOMER GUIDE FOR 'WORKS ON OR NEAR BARWON WATER ASSETS' AND MAKE APPLICATIONS AS PER BARWON WATER'S REQUIREMENTS.

ALL SPLAYED PIPES ARE TO BE MANUFACTURED AND INSTALLED IN ACCORDANCE WITH MANUFACTURER'S SPECIFICATIONS. WCC WILL NOT ACCEPT BANDAGE-JOINTED SPLAYED PIPES.

Planning and Environment Act 1987
Wyndham Planning Scheme
Approved Plan As Required
under Condition 35
Permit No WYP6865/13
Date 27/07/2020



UTILITIES CORRIDOR TO BE SHAPED AS PER DETAIL ON SHEET CR700



200mm THICK R.C. HEAVY DUTY PAVEMENT FOR EXTENT OF EASEMENT.

CLASS 4 RCP WITH CONCRETE END WALLS TO SUIT. PIPE DOWNSTREAM I.L. 50.97 & GRADE OF 1 IN 300. PATH (AND ANY BEDDING REQUIRED) TO BE RAISED AS REQUIRED AND RECONSTRUCTED DIRECTLY ON TOP OF PIPE. SHARED PATH IN VICINITY OF 15m TO BE DEMOLISHED AND RECONSTRUCTED HIGHER TO MATCH INTO NEW 15m PATH (IF REQUIRED).

EXISTING KERB CUTOUT TO BE DEMOLISHED AND NEW SM2 CONSTRUCTED

EXISTING 3000Ø DW & 225Ø NDW MAINS. CITY WEST WATER ASSET.
EX 180PE GAS MAIN. AUSNET DISTRIBUTION.
EXISTING OVERHEAD HV 66KV ELECTRICITY TRANSMISSION
EXISTING OVERHEAD HV 66KV ELECTRICITY TRANSMISSION

COLLAPSIBLE BOLLARDS AS PER WCC-SD 10-1

INVERT TO BE GRADED AT 1 IN 300 FROM ODYSSEY BOULEVARD TO PIT 400

DAM FILLING COMPLETED IN EARLIER CONSTRUCTION WORKS

CLASS 4 RCP WITH CONCRETE END WALLS TO SUIT. UPSTREAM I.L. 50.56 AT 1 IN 300. SWALE TO BE GRADED AT 1 IN 300. PATH (AND ANY BEDDING REQUIRED) TO BE RAISED AS REQUIRED AND RECONSTRUCTED DIRECTLY ON TOP OF PIPE. SHARED PATH IN VICINITY OF 15m PATH TO BE DEMOLISHED AND RECONSTRUCTED HIGHER TO MATCH INTO NEW 15m PATH (IF REQUIRED).

EXISTING CULVERT TO BE SEALED AND ABANDONED

DEVIATE SWALE AROUND OH POWER POLE. EXISTING LEVELS AROUND POLE TO REMAIN UNTOUCHED.

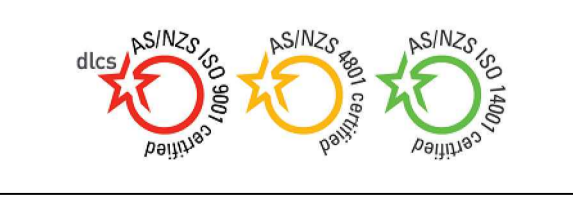
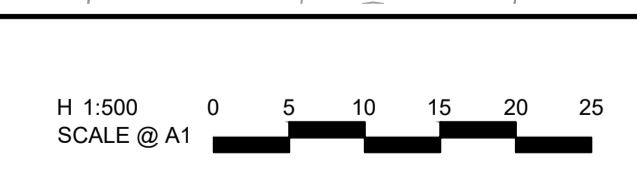
FOR ALIGNMENT 'F' SET OUT AND LONGITUDINAL SECTION, REFER 303216CR301

CONSTRUCT NEW GRATED ENTRY PIT (GRATE LEVEL 50.58) TO PICK UP SWALE. SWALE TO BE GRADED AT 1 IN 300 IN NORTH TO SOUTH DIRECTION.

BREAK INTO EXISTING PIT AT BASE. PIT 400 TO BE CONVERTED TO GRATED LID

file name: 303440CR200 - REV 2 - REZONED.dwg, layout name: CR200, created by: George Yarrabhis, file location: G:\303440\303440\ALCAD\plot_date: 09/07/2020 10:24 AM, Sheet 2 of 16, Sheets

7	ISSUED FOR CONSTRUCTION	M.H.	09-07-20
6	NOTE REGARDING SHAPING OF UTILITIES CORRIDOR ADDED	M.H.	09-07-20
5	AMENDMENTS TO UTILITIES CORRIDOR	MH	25-05-20
4	AS CONSTRUCTED	MH	06-12-19
3	DRIVEWAY AMENDED, RELOCATED GAS WATER CONDUIT	M.H.	12-08-19
2	AMENDMENT TO STAGE BOUNDARY 8 & 11	M.H.	01-03-19
1	RESEQUENCING OF STAGES 8 & 9, REMOVAL OF BOUNDARY FENCE	M.H.	13-11-18
0	ISSUED FOR CONSTRUCTION	J.S.	27-06-18
Rev	Amendments	Approved	Date



© Spiire Australia Pty Ltd All Rights Reserved
This document is produced by Spiire Australia Pty Ltd solely for the benefit of and use by the client in accordance with the terms of the retainer. Spiire Australia Pty Ltd does not and shall not assume any responsibility or liability whatsoever to any third party arising out of any use or reliance by third party on the content of this document.

spiire

414 La Trobe Street PO Box 16084 Melbourne
Victoria 8007 Australia T 61 3 9993 7888
spiire.com.au ABN 55 050 029 635

PEET

Designed
H. SPURLING
Authorised
M. HOLMES

Checked
B. MUGRIDGE
Date
01-03-19

NEWHAVEN ESTATE
STAGE 8
ROAD & DRAINAGE
DETAIL PLAN
WYNDHAM CITY COUNCIL
PEET 1985 PTY LTD

CONSTRUCTION Drg No **303440CR200** Rev **7**