

PROPOSED
ALLOTMENT 438

PROPOSED
ALLOTMENT 416

THERE ARE EARTHWORKS
PROPOSED FOR ALLOTMENT 437

PROPOSED
ALLOTMENT 436

437
887m²

ROAD

10m 50mm 20m 100mm 30m 150mm SCALE BAR

LEGEND

Natural surface contours based on A.H.D. datum at an interval of 0.5m,
shown as: 1.0 1.0 0.5

Final surface contours based on A.H.D. datum at an interval of 0.25m,
shown as: 1.0 0.5

Where applicable, areas to be filled from natural surface and proposed areas
of earthworks fill on plans by Wood and Griveve Pty Ltd, are shown as:-



Concrete Sleeper Retaining Walls shown as:-



Boulder Retaining Walls shown as:-

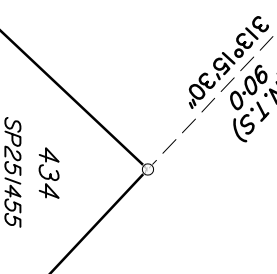


Proposed surface level shown as:-

+44.20

Metes and Bounds Description of Proposed Allotment 437

FROM THE NORTHERN MOST CORNER OF LOT 434 ON SP251455 IN A
NORTH WESTERLY DIRECTION AT A BEARING OF 313 DEGREES 15'30" FOR
A DISTANCE OF 90.0 METRES TO THE POINT OF COMMENCEMENT THENCE
IN A SOUTH WESTERLY DIRECTION AT A BEARING OF 223 DEGREES 15'30"
FOR A DISTANCE OF 32 METRES (MORE OR LESS), THENCE
IN A NORTH WESTERLY DIRECTION AT A BEARING OF 313 DEGREES 15'30"
FOR A DISTANCE OF 6.956 METRES (MORE OR LESS), THENCE
IN A NORTH WESTERLY DIRECTION AT A BEARING OF 301 DEGREES 47'00"
FOR A DISTANCE OF 17.561 METRES (MORE OR LESS), THENCE
IN A NORTH EASTERLY DIRECTION AT A BEARING OF 31 DEGREES 47'00"
FOR A DISTANCE OF 32.005 METRES (MORE OR LESS), THENCE
IN A SOUTH EASTERLY DIRECTION AT A BEARING OF 121 DEGREES 47'00"
FOR A DISTANCE OF 18.491 METRES (MORE OR LESS), THENCE
IN A SOUTH EASTERLY DIRECTION AT A BEARING OF 127 DEGREES 31'00"
FOR A DISTANCE OF 4.5 METRES (MORE OR LESS), THENCE
IN A SOUTH EASTERLY DIRECTION AT A BEARING OF 133 DEGREES 15'30"
FOR A DISTANCE OF 7.936 METRES (MORE OR LESS),



**VANTAGE
STAGE 7
For
PEET**

IMPORTANT NOTES:

These notes are an integral part of this plan
This plan has been prepared for PEET for the purposes of A
Disclosure Plan Under the Land Sales Act 1984.
It is not to be used by any other person or corporation or for
any other purpose and is subject to the following limitations:
The Allotment dimensions and area shown hereon are subject
to final field survey and also to the requirements of Council
and any other authority which may have requirements under
any relevant legislation.
Please refer to the approved Development Application for
conditions relating to the Allotments and to approved
Works drawings for services location and possible
obstructions.
The locations of retaining walls shown on this plan are
indicative only, see detailed engineering drawings for the
dimensions of any structures that may affect the Lot.
Final surface contours shown hereon have been drawn from
final field survey and approved by the relevant authority.
Final surface contours shown hereon have been drawn from survey by Hellstrom &
Partners Pty Ltd.
Where final surface contours are not shown, no change to
existing surface level is proposed.

**THESE DESIGNS AND DRAWINGS ARE COPYRIGHT
AND ARE NOT TO BE USED OR REPRODUCED
WITHOUT THE WRITTEN PERMISSION OF THG**

Data Sources
Cadastral Boundaries CS232\CI.Rwp
Final Surface Contours Vantage Estate - Stage 7 FSL (in).126a
Natural Surface Contours 157800_2.Dwg
Engineering Design 23520 C REF BASE.dwg

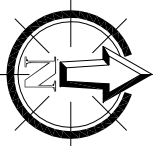
No.	Revisions	Date	Chkd
A	Original	18/10/12	EM

Parrish: AUCKLAND
County: CLINTON
Locality: NEW AUCKLAND
Local Authority: CLADSTONE REGIONAL
Horizontal Meridian: MGA
Vertical Level Datum: AHD
Level Origin: PM95145
Scale: 1:200 @ A3
Surveyed: THG
Drawn: EJM
Checked: MMR
PLOT Date: 20 Oct. 2012
Computer File Ref: 223007_1 Dpsq(A).dwg

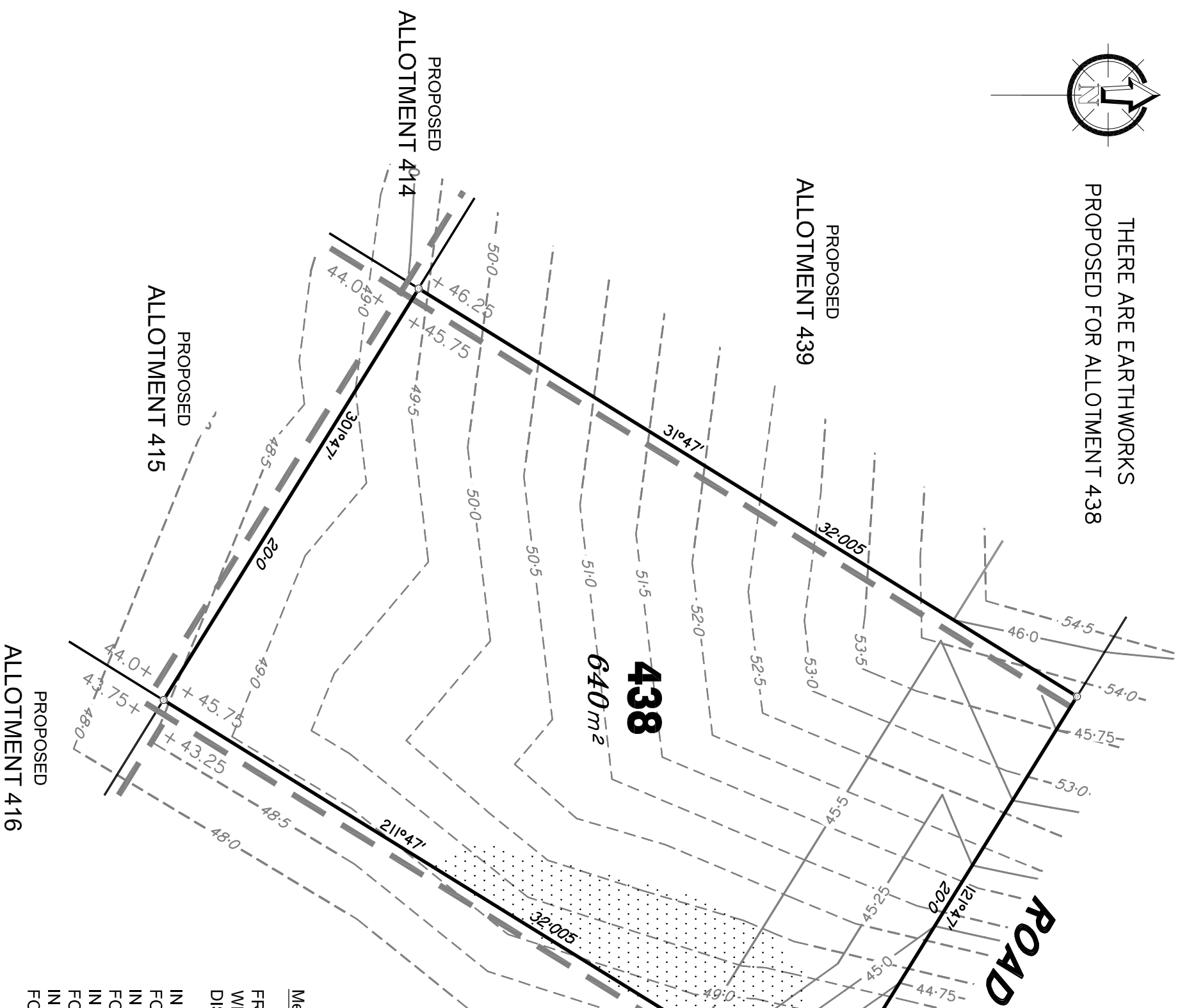
**DISCLOSURE PLAN
of Proposed Allotment
437
situated on
Lot 509 on SP251455**



BRISBANE GOLD COAST
(07) 3666 4700 (07) 5574 0588
Email: mail@thg.com.au www.thg.com.au
ABN 55 918 746 490 Heblonim Partners Pty Ltd trading as THG
Drawing No **C5232-DP 437** Issue **A**



THESE ARE EARTHWORKS
PROPOSED FOR ALLOTMENT 438

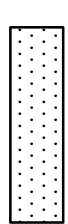


LEGEND

Natural surface contours based on A.H.D. datum at an interval of 0.5m,
shown as: 1:0 50

Final surface contours based on A.H.D. datum at an interval of 0.25m,
shown as: 1:0 50

Where applicable, areas to be filled from natural surface and proposed areas
of earthworks fill on plans by Wood and Griveve Pty Ltd, are shown as:-



Concrete Sleeper Retaining Walls shown as:-



Boulder Retaining Walls shown as:-



Proposed surface level shown as:-



**VANTAGE
STAGE 7**
For
PEET

IMPORTANT NOTES:

These notes are an integral part of this plan.
This plan has been prepared for PEET for the purposes of a
Disclosure Plan Under the Land Sales Act 1984.
It is not to be used by any other person or corporation or for
any other purpose and is subject to the following limitations:
The alignment dimensions and area shown hereon are subject
to final field survey and also to the requirements of Council
and any other authority which may have requirements under
any relevant legislation.
Please refer to the approved Development Application for
conditions relating to the Alignments and to approved
Construction Works drawings for services location and possible
obstructions.
The locations of retaining walls shown on this plan are
indicative only, see detailed engineering drawings for the
dimensions of any structures that may affect the Lot.
Final surface contours shown hereon have been drawn from
field survey and are shown by solid lines. Final surface contours
shown hereon have been drawn from survey by Hellstrom &
Partners Pty Ltd.
Where final surface contours are not shown, no change to
existing surface level is proposed.

**THESE DESIGNS AND DRAWINGS ARE COPYRIGHT
AND ARE NOT TO BE USED OR REPRODUCED
WITHOUT THE WRITTEN PERMISSION OF THG**

Data Sources
Cadastral Boundaries CS232\CI Ref#
Final Surface Contours Vantage Estate - Stage 7 FSL (in: 1264
Natural Surface Contours 157800_2.Dwg
Engineering Design 23520 C REF BASE.dwg

No.	Revisions	Date	Chkd
A	Original	18/10/12	EM

P parish: AUCKLAND
County: CLINTON
Locality: NEW AUCKLAND
Local Authority: CLADSTONE REGIONAL
Horizontal Meridian: MGA
Vertical Level Datum: AHD
Level Origin: PM95145
Scale: 1:200 @ A3
Surveyed: THG
Drawn: EJM
Checked: MMR
Plot Date: 20 Oct. 2012
Computer File Ref: 223007_1 Dps(A).dwg

**DISCLOSURE PLAN
of Proposed Allotment
438
situated on
Lot 509 on SP251455**



BRISBANE GOLD COAST
(07) 3666 4700 (07) 5574 0588
Email: mail@thg.com.au www.thg.com.au
ABN 58 918 746 490 Helidon Farmes Pty Ltd trading as THG

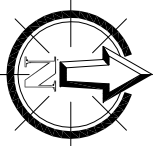
Drawing No **C5232-DP 438** Issue **A**



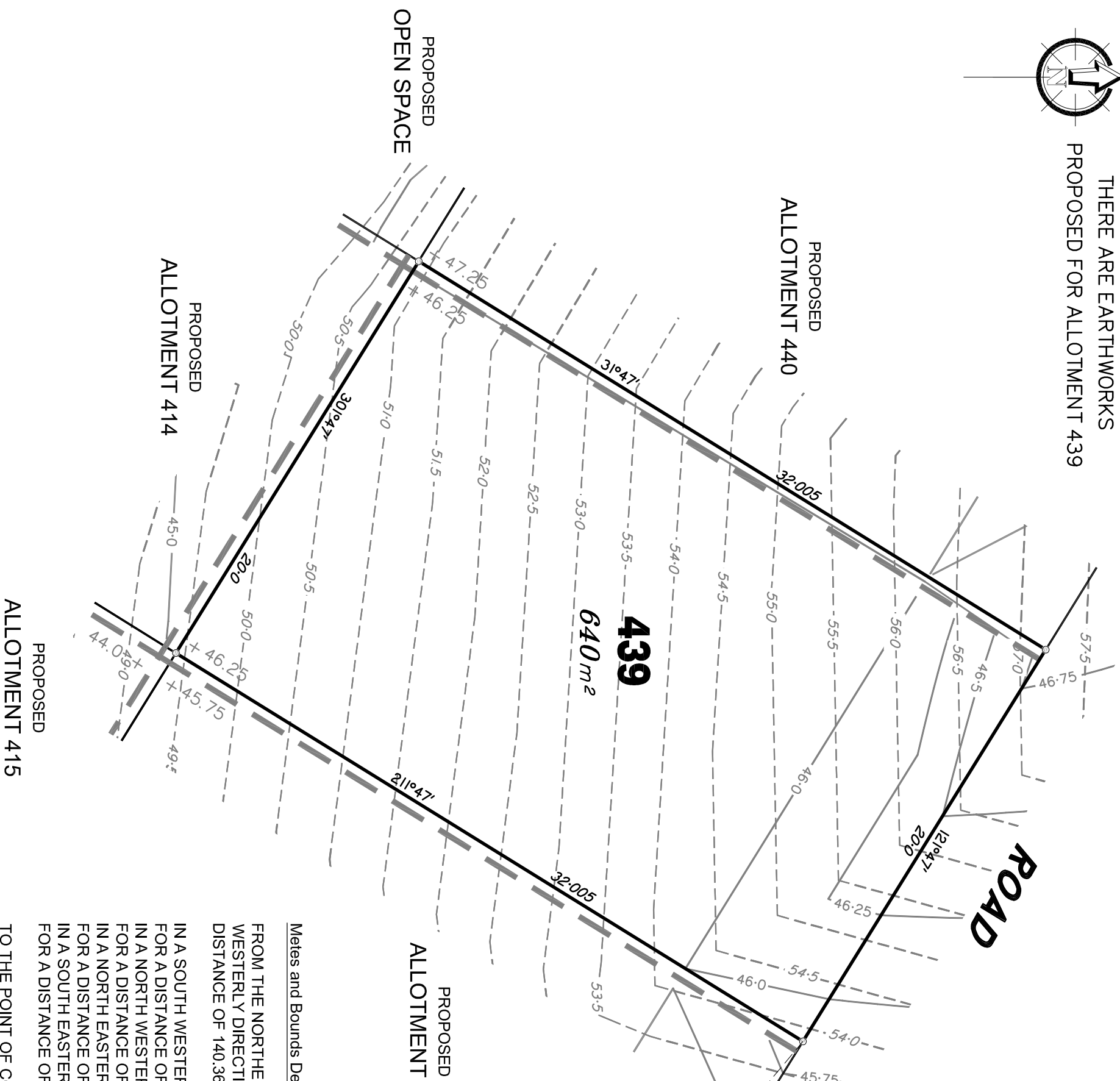
Metes and Bounds Description of Proposed Allotment 438

FROM THE NORTHERN MOST CORNER OF LOT 434 ON SP251455 IN A NORTH
WESTERLY DIRECTION AT A BEARING OF 311 DEGREES 17' 50" FOR A
DISTANCE OF 120.603 METRES TO THE POINT OF COMMENCEMENT THENCE
IN A SOUTH WESTERLY DIRECTION AT A BEARING OF 211 DEGREES 47'00"
FOR A DISTANCE OF 32.005 METRES (MORE OR LESS), THENCE
IN A NORTH WESTERLY DIRECTION AT A BEARING OF 301 DEGREES 47'00"
FOR A DISTANCE OF 20 METRES (MORE OR LESS), THENCE
IN A NORTH EASTERLY DIRECTION AT A BEARING OF 31 DEGREES 47'00"
FOR A DISTANCE OF 32.005 METRES (MORE OR LESS), THENCE
IN A SOUTH EASTERLY DIRECTION AT A BEARING OF 121 DEGREES 47'00"
FOR A DISTANCE OF 20 METRES (MORE OR LESS),

TO THE POINT OF COMMENCEMENT AND CONTAINING AN AREA OF
640 SQUARE METRES (MORE OR LESS).



THERE ARE EARTHWORKS
PROPOSED FOR ALLOTMENT 439



LEGEND

Natural surface contours based on A.H.D. datum at an interval of 0.5m, shown as: 1/0

Final surface contours based on A.H.D. datum at an interval of 0.25m, shown as: 1/0

Where applicable, areas to be filled from natural surface and proposed areas of earthworks fill on plans by Wood and Gheve Pty Ltd, are shown as:-

Concrete Sleeper Retaining Walls shown as:-



Boulder Retaining Walls shown as:-



Proposed surface level shown as:-



**VANTAGE
STAGE 7**
For
PEET

IMPORTANT NOTES:

(These notes are an integral part of this plan)
This plan has been prepared for PEET for the purposes of a Disclosure Plan Under the Land Sales Act 1984.
It is not to be used by any other person or corporation or for any other purposes and is subject to the following limitations:
The allotment dimensions and area shown hereon are subject to final field survey and also to the requirements of Council and any other authority which may have requirements under any relevant legislation.
Please refer to the approved Development Application for conditions relating to the allotments and to approved Conditions of Sale (Works drawings) for services location and possible easements.
The locations of retaining walls shown on this plan are indicative only, see detailed engineering drawings for the dimensions of any structures that may affect the lot.
Final surface contours shown hereon have been drawn from field survey and approved by the relevant authority. Final surface contours shown hereon have been drawn from survey by Hellstrom & Partners Pty Ltd.
Where final surface contours are not shown, no change to existing surface level is proposed.

THESE DESIGNS AND DRAWINGS ARE COPYRIGHTED AND ARE NOT TO BE USED OR REPRODUCED WITHOUT THE WRITTEN PERMISSION OF THG

Data Sources
Cadastral Boundaries CS232/CI Ref#
Final Surface Contours Vantage Estate - Stage 7 FSL (in: 126a 157800_2.Dwg)
Natural Surface Contours 157800_2.Dwg
Engineering Design 23520 C REF BASE.dwg

No	Revisions	Date	Chkd
A	Original	18/10/12	EM

Parrish: AUCKLAND
County: CLINTON
Locality: NEW AUCKLAND
Local Authority: CLADSTONE REGIONAL MGA
Horizontal Meridian: AHD
Vertical Level Datum: AHD
Level Origin: PM95145
Scale: 1:200 @ A3
Surveyed: THG
Drawn: EJM
Checked: MMR
Plot Date: 20 Oct, 2012
Computer File Ref: 223007_1 Dps(A).dwg

DISCLOSURE PLAN
of Proposed Allotment
439
situated on
Lot 509 on SP251455



BRISBANE (07) 3666 4700
GOLD COAST (07) 5574 0588
Email: mail@thg.com.au www.thg.com.au
ABN 58 918 746 590 Helidon Farmes Pty Ltd trading as THG

Drawing No **C5232-DP 439** Issue **A**

Metes and Bounds Description of Proposed Allotment 439

FROM THE NORTHERN MOST CORNER OF LOT 434 ON SP251455 IN A NORTH WESTERLY DIRECTION AT A BEARING OF 309 DEGREES 56' 50" FOR A DISTANCE OF 140.367 METRES TO THE POINT OF COMMENCEMENT THENCE

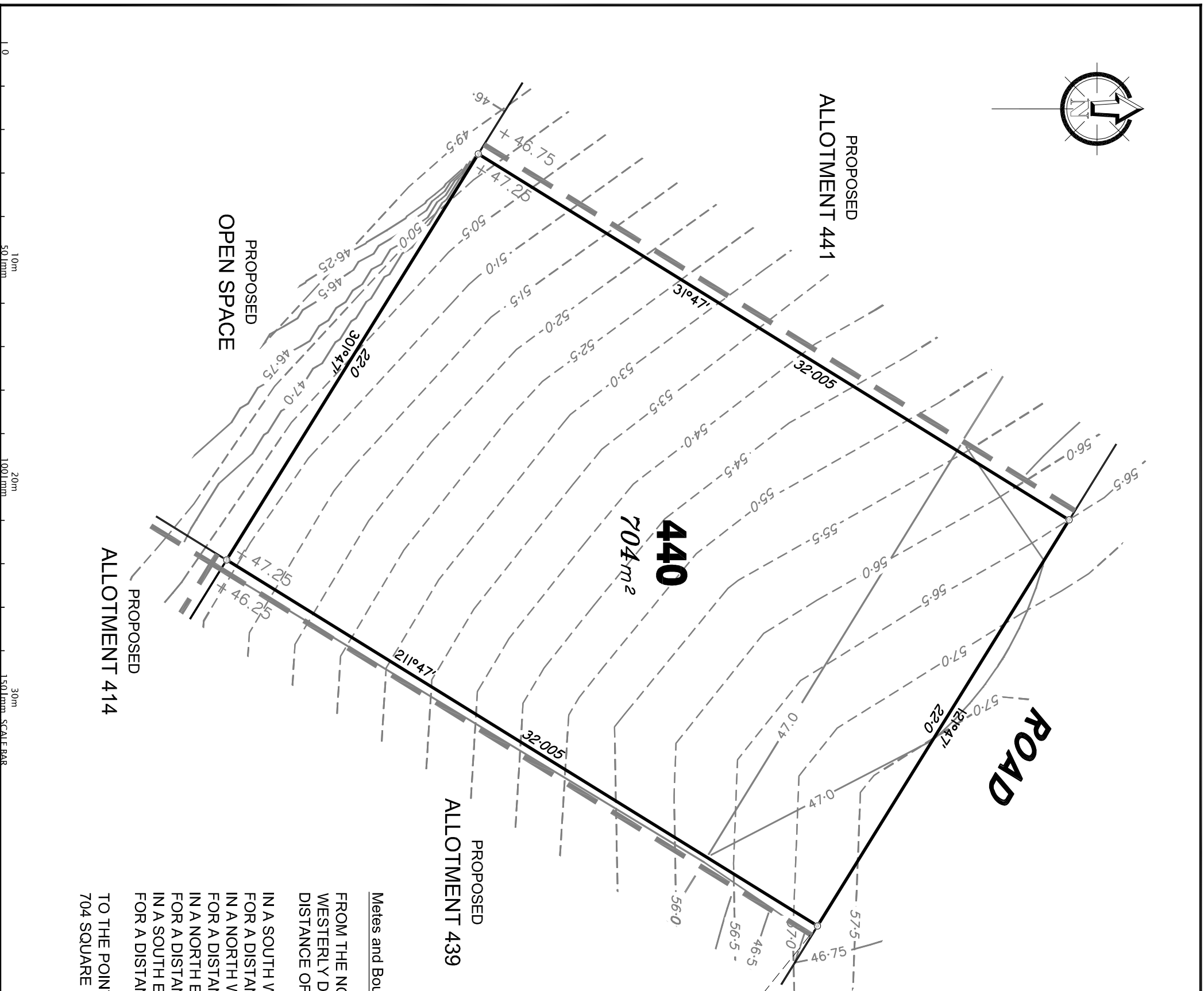
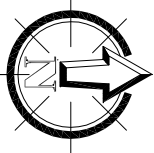
IN A SOUTH WESTERLY DIRECTION AT A BEARING OF 211 DEGREES 47'00" FOR A DISTANCE OF 32.005 METRES (MORE OR LESS), THENCE

IN A NORTH WESTERLY DIRECTION AT A BEARING OF 301 DEGREES 47'00" FOR A DISTANCE OF 20 METRES (MORE OR LESS), THENCE

IN A NORTH WESTERLY DIRECTION AT A BEARING OF 31 DEGREES 47'00" FOR A DISTANCE OF 32.005 METRES (MORE OR LESS), THENCE

IN A SOUTH WESTERLY DIRECTION AT A BEARING OF 121 DEGREES 47'00" FOR A DISTANCE OF 20 METRES (MORE OR LESS),

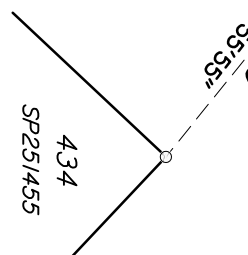
TO THE POINT OF COMMENCEMENT AND CONTAINING AN AREA OF 640 SQUARE METRES (MORE OR LESS).



LEGEND

- Natural surface contours based on A.H.D. datum at an interval of 0.5m, shown as: 1:0
- Final surface contours based on A.H.D. datum at an interval of 0.25m, shown as: 1:0
- Where applicable, areas to be filled from natural surface and proposed areas of earthworks fill on plans by Wood and Griveve Pty Ltd, are shown as:-
- Concrete Sleeper Retaining Walls shown as:-
- Boulder Retaining Walls shown as:-
- Proposed surface level shown as:-

THERE ARE EARTHWORKS PROPOSED FOR ALLOTMENT 440



Metes and Bounds Description of Proposed Allotment 440

FROM THE NORTHERN MOST CORNER OF LOT 434 ON SP251/455 IN A NORTH WESTERLY DIRECTION AT A BEARING OF 308 DEGREES 55' 55" FOR A DISTANCE OF 160.19 METRES TO THE POINT OF COMMENCEMENT THENCE IN A SOUTH WESTERLY DIRECTION AT A BEARING OF 211 DEGREES 47'00" FOR A DISTANCE OF 32.005 METRES (MORE OR LESS), THENCE IN A NORTH WESTERLY DIRECTION AT A BEARING OF 301 DEGREES 47'00" FOR A DISTANCE OF 22 METRES (MORE OR LESS), THENCE IN A NORTH EASTERLY DIRECTION AT A BEARING OF 31 DEGREES 47'00" FOR A DISTANCE OF 32.005 METRES (MORE OR LESS), THENCE IN A SOUTH EASTERLY DIRECTION AT A BEARING OF 121 DEGREES 47'00" FOR A DISTANCE OF 22 METRES (MORE OR LESS),

TO THE POINT OF COMMENCEMENT AND CONTAINING AN AREA OF 704 SQUARE METRES (MORE OR LESS).

**VANTAGE
STAGE 7
For
PEET**

IMPORTANT NOTES:
 (These notes are an integral part of this plan)
 This plan has been prepared for PEET for the purposes of a Disclosure Plan Under the Land Sales Act 1984.
 It is not to be used by any other person or corporation or for any other purposes and is subject to the following limitations:
 The Allotment dimensions and area shown hereon are subject to final field survey and also to the requirements of Council and any other authority which may have requirements under any relevant legislation.
 Please refer to the approved Development Application for conditions relating to the Allotments and to approved earthworks drawings for services location and possible easements.
 The locations of retaining walls shown on this plan are indicative only, see detailed engineering drawings for the dimensions of any structures that may affect the Lot.
 Final surface contours shown hereon have been drawn from a survey by Hellstrom & Partners Pty Ltd.
 Where final surface contours are not shown, no change to existing surface level is proposed.

THESE DESIGNS AND DRAWINGS ARE COPYRIGHTED AND ARE NOT TO BE USED OR REPRODUCED WITHOUT THE WRITTEN PERMISSION OF THE SURVEYOR

Data Sources

Cadastral Boundaries	C5232/CI Ref#
Final Surface Contours	Vantage Estate - Stage 7 FSL (in: 1204 Natural Surface Contours 157800_2.Dwg)
Engineering Design	23520 C REF BASE.dwg

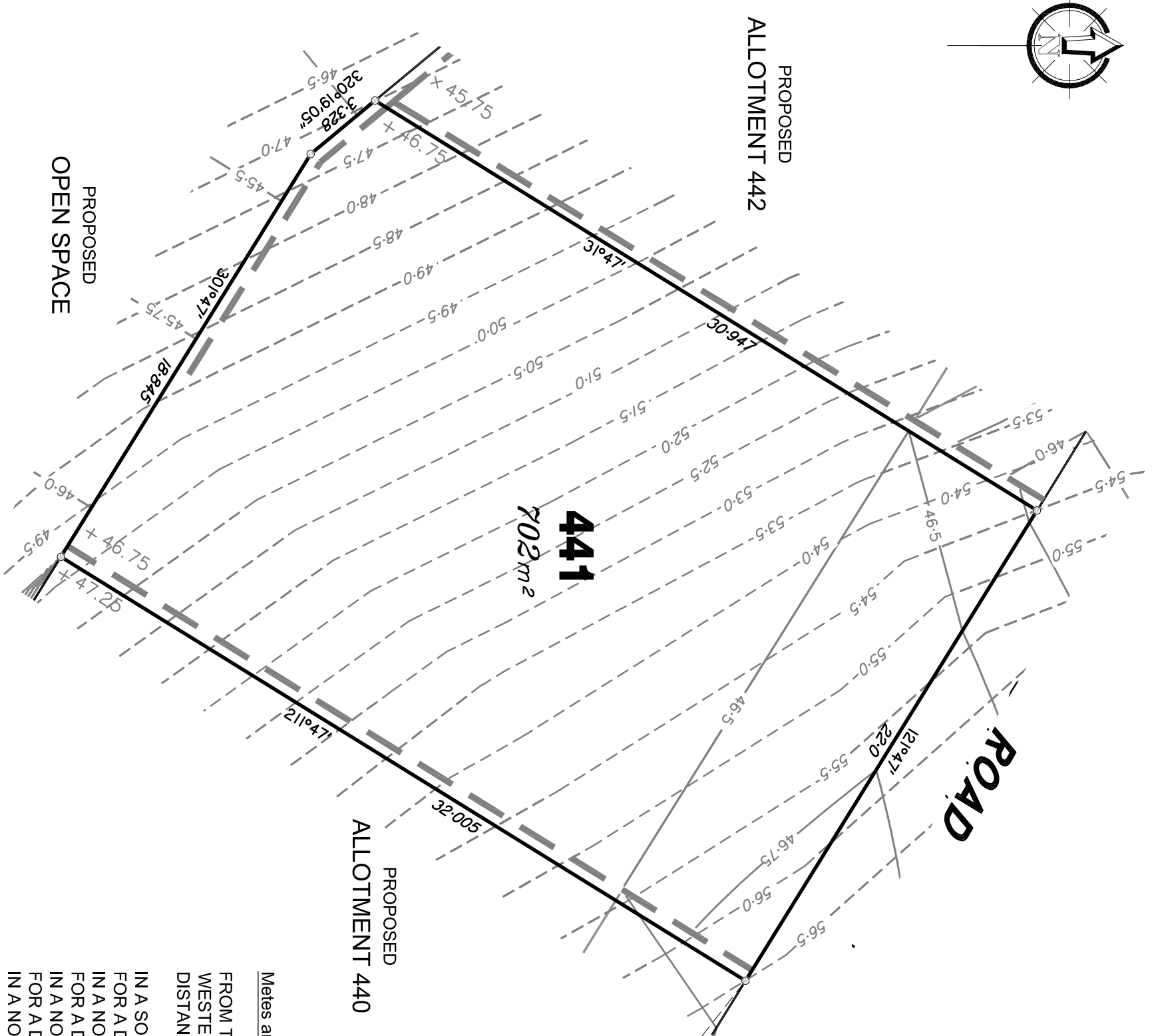
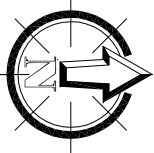
No.	Revisions	Date	Chkd
A	Original	18/10/12	EM

Parish: AUCKLAND
 County: CLINTON
 Locality: NEW AUCKLAND
 Local Authority: CLADSTONE REGIONAL
 Horizontal Meridian: MGA
 Vertical Level Datum: AHD
 Level Origin: PM95145
 Scale: 1:200 @ A3
 Surveyed: THG
 Drawn: EJM
 Checked: MMR
 Plot Date: 20 Oct. 2012
 Computer File Ref: 223007_1.Dwg(A).dwg

DISCLOSURE PLAN
 of Proposed Allotment
 440
 situated on
 Lot 509 on SP251/455

THG
 BRISBANE GOLD COAST
 (07) 3666 4700 (07) 5574 0588
 Email: mail@thg.com.au www.thg.com.au
 ABN 55 918 746 490 Helidon/Farmer Pty Ltd trading as THG

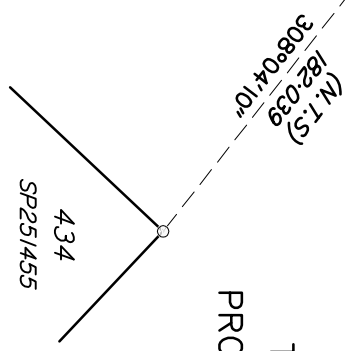
Drawing No: C5232-DP 440 Issue: A



LEGEND

- Natural surface contours based on A.H.D. datum at an interval of 0.5m, shown as: 1:0
- Final surface contours based on A.H.D. datum at an interval of 0.25m, shown as: 1:0
- Where applicable, areas to be filled from natural surface and proposed areas of earthworks fill on plans by Wood and Griveve Pty Ltd, are shown as:-
 Concrete Sleeper Retaining Walls shown as:-
 Boulder Retaining Walls shown as:-
 Proposed surface level shown as:-
 +44.20

THERE ARE EARTHWORKS PROPOSED FOR ALLOTMENT 441



Mets and Bounds Description of Proposed Allotment 441

FROM THE NORTHERN MOST CORNER OF LOT 434 ON SP251455 IN A NORTH WESTERLY DIRECTION AT A BEARING OF 308 DEGREES 04' 10" FOR A DISTANCE OF 182.039 METRES TO THE POINT OF COMMENCEMENT THENCE IN A SOUTH WESTERLY DIRECTION AT A BEARING OF 211 DEGREES 47'00" FOR A DISTANCE OF 32.005 METRES (MORE OR LESS), THENCE IN A NORTH WESTERLY DIRECTION AT A BEARING OF 301 DEGREES 47'00" FOR A DISTANCE OF 18.845 METRES (MORE OR LESS), THENCE IN A NORTH WESTERLY DIRECTION AT A BEARING OF 320 DEGREES 19'05" FOR A DISTANCE OF 3.328 METRES (MORE OR LESS), THENCE IN A NORTH EASTERLY DIRECTION AT A BEARING OF 31 DEGREES 47'00" FOR A DISTANCE OF 30.947 METRES (MORE OR LESS), THENCE IN A SOUTH EASTERLY DIRECTION AT A BEARING OF 121 DEGREES 47'00" FOR A DISTANCE OF 22 METRES (MORE OR LESS),

TO THE POINT OF COMMENCEMENT AND CONTAINING AN AREA OF 702 SQUARE METRES (MORE OR LESS).

**VANTAGE
STAGE 7
For
PEET**

IMPORTANT NOTES:
 (These notes are an integral part of this plan)
 This plan has been prepared for PEET for the purposes of a Disclosure Plan Under the Land Sales Act 1984.
 It is not to be used by any other person or corporation or for any other purposes and is subject to the following limitations:
 The Allotment dimensions and area shown hereon are subject to final field survey and also to the requirements of Council and any other authority which may have requirements under any relevant legislation.
 Please refer to the approved Development Application for conditions relating to the Allotments and to approved Construction Works drawings for services location and possible easements.
 The locations of retaining walls shown on this plan are indicative only, see detailed engineering drawings for the dimensions of any structures that may affect the Lot.
 Final surface contours shown hereon have been drawn from field survey and are shown by dashed lines. Final surface contours shown hereon have been drawn from survey by Hellstrom & Partners Pty Ltd.
 Where final surface contours are not shown, no change to existing surface level is proposed.

THESE DESIGNS AND DRAWINGS ARE COPYRIGHTED AND ARE NOT TO BE USED OR REPRODUCED WITHOUT THE WRITTEN PERMISSION OF THE DATA SOURCES

Data Sources	CS232\CI Ref#
Cadastral Boundaries	Vantage Estate - Stage 7 FSL (in: 126)
Final Surface Contours	157800_2.Dwg
Natural Surface Contours	23520 C REF BASE.dwg
Engineering Design	

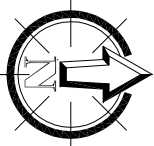
No.	Revisions	Date	Chkd
A	Original	18/10/12	EM

Parish: AUCKLAND
 County: CLINTON
 Locality: NEW AUCKLAND
 Local Authority: CLADSTONE REGIONAL
 Horizontal Meridian: MGA
 Vertical Level Datum: AHD
 Level Origin: PM95145
 Scale: 1:200 @ A3
 Surveyed: THG
 Drawn: EJM
 Checked: MMR
 Plot Date: 20 Oct, 2012
 Computer File Ref: 223007_1 Dps(A).dwg

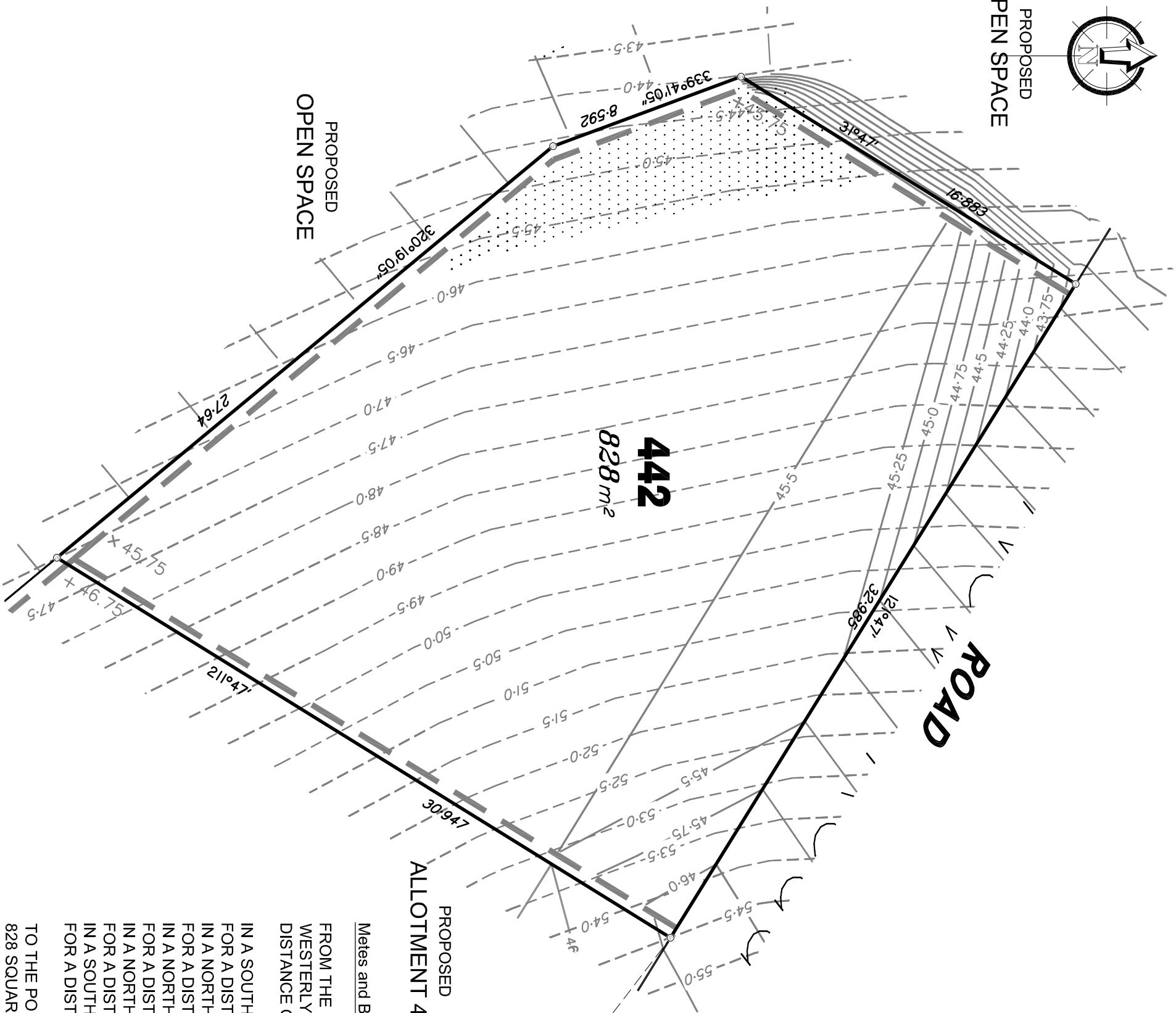
DISCLOSURE PLAN
 of Proposed Allotment
 441
 situated on
 Lot 509 on SP251455

THG
 BRISBANE GOLD COAST
 (07) 3666 4700 (07) 5574 0588
 Email: mail@thg.com.au www.thg.com.au
 ABN 58 918 746 590 Helidon/Farmer Pty Ltd trading as THG

Drawing No: **C5232-DP 441** Issue: **A**



PROPOSED
OPEN SPACE



442
828 m²

ROAD

PROPOSED
ALLOTMENT 441

Metes and Bounds Description of Proposed Allotment 442

FROM THE NORTHERN MOST CORNER OF LOT 434 ON SP251455 IN A NORTH WESTERLY DIRECTION AT A BEARING OF 307 DEGREES 23' 35" FOR A DISTANCE OF 203.921 METRES TO THE POINT OF COMMENCEMENT THENCE

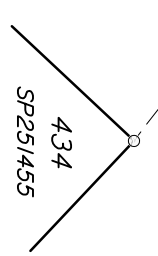
IN A SOUTH WESTERLY DIRECTION AT A BEARING OF 211 DEGREES 47'00" FOR A DISTANCE OF 30.947 METRES (MORE OR LESS), THENCE IN A NORTH WESTERLY DIRECTION AT A BEARING OF 320 DEGREES 19'05" FOR A DISTANCE OF 27.64 METRES (MORE OR LESS), THENCE IN A NORTH WESTERLY DIRECTION AT A BEARING OF 339 DEGREES 41'05" FOR A DISTANCE OF 8.592 METRES (MORE OR LESS), THENCE IN A NORTH EASTERLY DIRECTION AT A BEARING OF 31 DEGREES 47'00" FOR A DISTANCE OF 16.883 METRES (MORE OR LESS), THENCE IN A SOUTH EASTERLY DIRECTION AT A BEARING OF 121 DEGREES 47'00" FOR A DISTANCE OF 32.985 METRES (MORE OR LESS),

TO THE POINT OF COMMENCEMENT AND CONTAINING AN AREA OF 828 SQUARE METRES (MORE OR LESS).

LEGEND

- Natural surface contours based on A.H.D. datum at an interval of 0.5m, shown as: 1:0
- Final surface contours based on A.H.D. datum at an interval of 0.25m, shown as: 1:0
- Where applicable, areas to be filled from natural surface and proposed areas of earthworks fill on plans by Wood and Griveve Pty Ltd, are shown as:-
- Concrete Sleeper Retaining Walls shown as:-
- Boulder Retaining Walls shown as:-
- Proposed surface level shown as:- +44.20

THERE ARE EARTHWORKS
PROPOSED FOR ALLOTMENT 442



**VANTAGE
STAGE 7**
For
PEET

IMPORTANT NOTES:
These notes are an integral part of this plan.
This plan has been prepared for PEET for the purposes of a Disclosure Plan Under the Land Sales Act 1984.
It is not to be used by any other person or corporation or for any other purposes and is subject to the following limitations:
The Allotment dimensions and area shown hereon are subject to final field survey and also to the requirements of Council and any other authority which may have requirements under any relevant legislation.
Please refer to the approved Development Application for conditions relating to the Allotments and to approved earthworks drawings for services location and possible easements.
The locations of retaining walls shown on this plan are indicative only, see detailed engineering drawings for the dimensions of any structures that may affect the lot.
Final surface contours shown hereon have been drawn from the natural surface contours shown hereon and are subject to final field survey and also to the requirements of Council and any other authority which may have requirements under any relevant legislation.
Where final surface contours are not shown, no change to existing surface level is proposed.

THESE DESIGNS AND DRAWINGS ARE COPYRIGHT AND ARE NOT TO BE USED OR REPRODUCED WITHOUT THE WRITTEN PERMISSION OF THG

Data Sources

Cadastral Boundaries	C5232/CI Ref#
Final Surface Contours	Vantage Estate - Stage 7 PSL (in: 1204
Natural Surface Contours	157800_2.Dwg
Engineering Design	23520 C REF BASE.Dwg

No	Revisions	Date	Chkd
A	Original	18/10/12	EM

Parish: AUCKLAND
County: CLINTON
Locality: NEW AUCKLAND
Local Authority: CLADSTONE REGIONAL
Horizontal Meridian: MGA
Vertical Level Datum: AHD
Level Origin: PM95145
Scale: 1:200 @ A3
Surveyed: THG
Drawn: EJM
Checked: MMR
Plot Date: 20 Oct. 2012
Computer File Ref: 223007_1 Dps(A).dwg

DISCLOSURE PLAN
of Proposed Allotment
442
situated on
Lot 509 on SP251455



BRISBANE (07) 3666 4700
GOLD COAST (07) 5574 0588
Email: mail@thg.com.au www.thg.com.au
ABN 55 918 746 590 Helidon/Parsons Pty Ltd trading as THG
Drawing No: C5232-DP 442 Issue: A