

Mets and Bounds Description of Proposed Allotment 397
 FROM THE POINT OF COMMENCEMENT AT THE NORTHERN MOST CORNER OF LOT 396 ON SP251455

IN A SOUTH WESTERLY DIRECTION AT A BEARING OF 223 DEGREES 15'30" FOR A DISTANCE OF 22 METRES (MORE OR LESS), THENCE
 IN A NORTH WESTERLY DIRECTION AT A BEARING OF 313 DEGREES 15'30" FOR A DISTANCE OF 32 METRES (MORE OR LESS), THENCE
 IN A NORTH WESTERLY DIRECTION AT A BEARING OF 43 DEGREES 15'30" FOR A DISTANCE OF 16 METRES (MORE OR LESS), THENCE
 IN A NORTH WESTERLY DIRECTION AT A BEARING OF 58 DEGREES 15'00" FOR A DISTANCE OF 3.106 METRES (MORE OR LESS), THENCE
 IN A WESTERLY DIRECTION AT A BEARING OF 88 DEGREES 15'00" FOR A DISTANCE OF 3.106 METRES (MORE OR LESS), THENCE
 IN A SOUTH WESTERLY DIRECTION AT A BEARING OF 118 DEGREES 15'00" FOR A DISTANCE OF 3.106 METRES (MORE OR LESS), THENCE
 IN A SOUTH WESTERLY DIRECTION AT A BEARING OF 133 DEGREES 15'30" FOR A DISTANCE OF 26 METRES (MORE OR LESS),

TO THE POINT OF COMMENCEMENT AND CONTAINING AN AREA OF 695 SQUARE METRES (MORE OR LESS).

THERE ARE EARTHWORKS
 PROPOSED FOR ALLOTMENT 397

LEGEND

Natural surface contours based on A.H.D. datum at an interval of 0.5m, shown as: 1:0
 Final surface contours based on A.H.D. datum at an interval of 0.25m, shown as: 1:0

Where applicable, areas to be filled from natural surface and proposed areas of earthworks fill on plans by Wood and Grieve Pty Ltd, are shown as:-

Concrete Sleeper Retaining Walls shown as:-

Boulder Retaining Walls shown as:-

Proposed surface level shown as:-

**VANTAGE
 STAGE 7**
 For
PEET

IMPORTANT NOTES:

These notes are an integral part of this plan.
 This plan has been prepared for PEET for the purposes of a Disclosure Plan Under the Land Sales Act 1984.
 It is not to be used by any other person or corporation or for any other purpose and is subject to the following limitations:
 The Allotment dimensions and area shown hereon are subject to final field survey and also to the requirements of Council and any other authority which may have requirements under any relevant legislation.
 Please refer to the approved Development Application for conditions relating to the Allotments and to approved earthworks drawings for services location and possible easements.
 The locations of retaining walls shown on this plan are indicative only, see detailed engineering drawings for the dimensions of any structures that may affect the Lot.
 Final surface contours shown hereon have been drawn from the final field survey and the proposed earthworks shown hereon have been drawn from survey by Hellstrom & Partners Pty Ltd.
 Where final surface contours are not shown, no change to existing surface level is proposed.

THESE DESIGNS AND DRAWINGS ARE COPYRIGHTED AND ARE NOT TO BE USED OR REPRODUCED WITHOUT THE WRITTEN PERMISSION OF THE DATA SOURCES

Cadastral Boundaries	C5232\CI Rev#
Final Surface Contours	Vantage Estate - Stage 7 FSL (m).124a
Natural Surface Contours	157800_2.Dwg
Engineering Design	23520 C REF BASE.dwg

No	Revisions	Date	Chkd
A	Original	18/10/12	EM

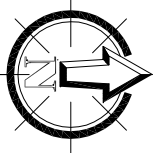
P parish: AUCKLAND
 County: CLINTON
 Locality: NEW AUCKLAND
 Local Authority: CLADSTONE REGIONAL MGA
 Horizontal Meridian: AHD
 Vertical Level Datum: AHD
 Level Origin: PM95145
 Scale: 1:200 @ A3
 Surveyed: THG
 Drawn: EJM
 Checked: MMR
 Plot Date: 20 Oct, 2012
 Computer File Ref: 223007_1 Dps(A).dwg

DISCLOSURE PLAN
 of Proposed Allotment
 397
 situated on
 Lot 509 on SP251455

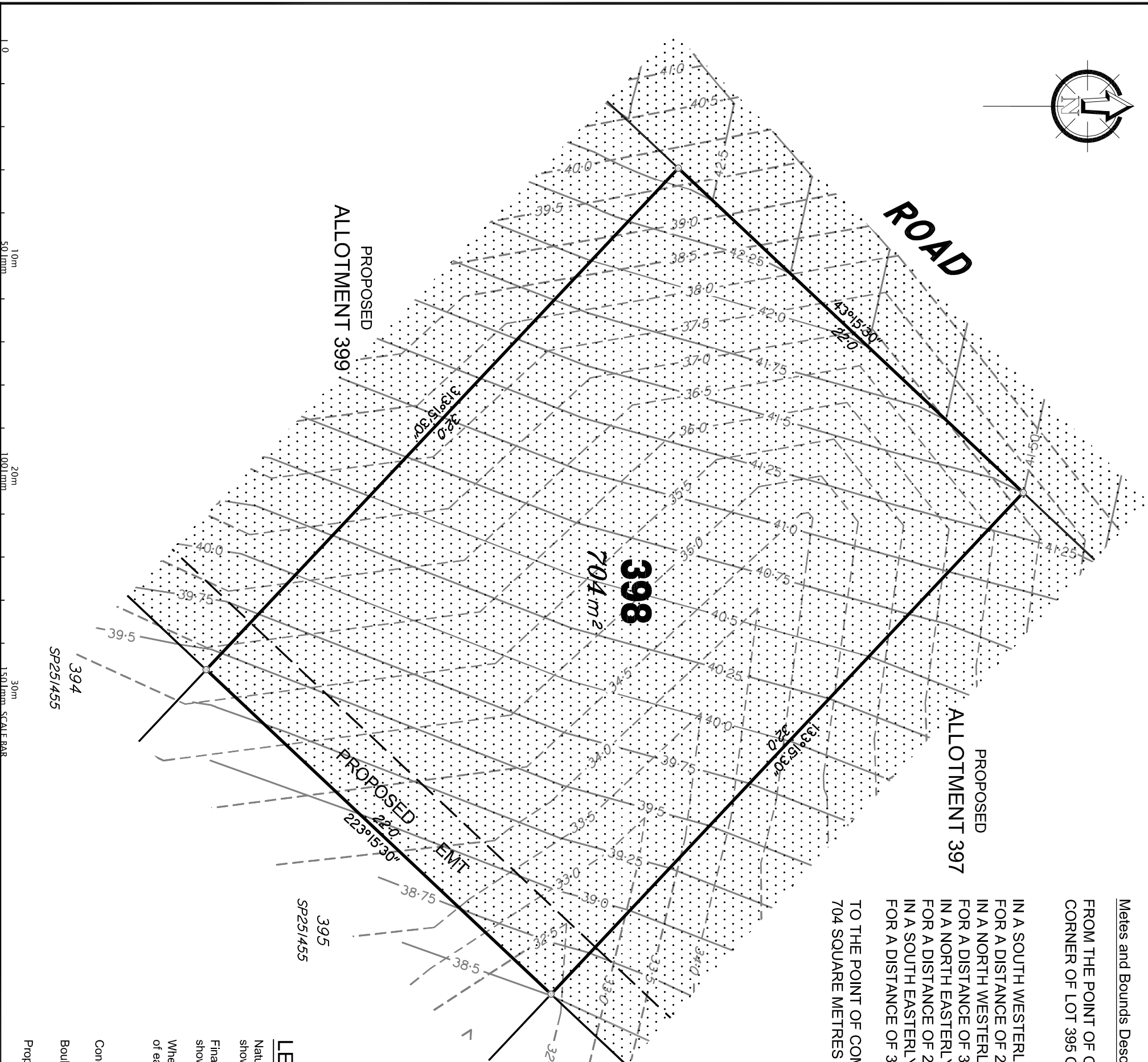


BRISBANE GOLD COAST
 (07) 3666 4700 (07) 5574 0588
 Email: mail@thg.com.au www.thg.com.au
 ABN 55 918 746 490 Heblrom Partners Pty Ltd trading as THG

Drawing No C5232-DP 397 Issue A



ROAD



Metes and Bounds Description of Proposed Allotment 398
 FROM THE POINT OF COMMENCEMENT AT THE NORTHERN MOST CORNER OF LOT 395 ON SP251455

IN A SOUTH WESTERLY DIRECTION AT A BEARING OF 223 DEGREES 15'30" FOR A DISTANCE OF 22 METRES (MORE OR LESS), THENCE IN A NORTH WESTERLY DIRECTION AT A BEARING OF 313 DEGREES 15'30" FOR A DISTANCE OF 32 METRES (MORE OR LESS), THENCE IN A NORTH EASTERLY DIRECTION AT A BEARING OF 43 DEGREES 15'30" FOR A DISTANCE OF 22 METRES (MORE OR LESS), THENCE IN A SOUTH EASTERLY DIRECTION AT A BEARING OF 133 DEGREES 15'30" FOR A DISTANCE OF 32 METRES (MORE OR LESS),

TO THE POINT OF COMMENCEMENT AND CONTAINING AN AREA OF 704 SQUARE METRES (MORE OR LESS).

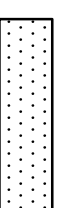
THERE ARE EARTHWORKS PROPOSED FOR ALLOTMENT 398

LEGEND

Natural surface contours based on A.H.D. datum at an interval of 0.5m, shown as: 1:0
 Final surface contours based on A.H.D. datum at an interval of 0.25m, shown as: 1:0

Where applicable, areas to be filled from natural surface and proposed areas of earthworks fill on plans by Wood and Grieve Pty Ltd, are shown as:-

Concrete Sleeper Retaining Walls shown as:-



Boulder Retaining Walls shown as:-



Proposed surface level shown as:-

VANTAGE
 STAGE 7
 For
PEET

IMPORTANT NOTES:
 (These notes are an integral part of this plan)
 This plan has been prepared for PEET for the purposes of a Disclosure Plan Under the Land Sales Act 1984.
 It is not to be used by any other person or corporation or for any other purposes and is subject to the following limitations:
 The allotment dimensions and area shown hereon are subject to final field survey and also to the requirements of Council and any other authority which may have requirements under any relevant legislation.
 Please refer to the approved Development Application for conditions relating to the allotments and to approved earthworks drawings for services location and possible easements.
 The locations of retaining walls shown on this plan are indicative only, see detailed engineering drawings for the dimensions of any structures that may affect the lot.
 Final surface contours shown hereon have been drawn from final field survey and shown hereon have been drawn from survey by Hellstrom & Partners Pty Ltd.
 Where final surface contours are not shown, no change to existing surface level is proposed.

THESE DESIGNS AND DRAWINGS ARE COPYRIGHTED AND ARE NOT TO BE USED OR REPRODUCED WITHOUT THE WRITTEN PERMISSION OF THE DATA SOURCES
 Cadastral Boundaries: C5232/CI Ref#
 Final Surface Contours: Vantage Estate - Stage 7 FSL (in: 12/4 Natural Surface Contours 157800_2.Dwg
 Engineering Design: 23520 CREP BASE.dwg

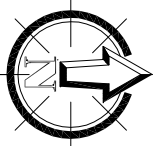
No	Revisions	Date	Chkd
A	Original	18/10/12	EM

Parrish: AUCKLAND
 County: CLINTON
 Locality: NEW AUCKLAND
 Local Authority: CLADSTONE REGIONAL MGA
 Horizontal Meridian: AHD
 Vertical Level Datum: AHD
 Level Origin: PM95145
 Scale: 1:200 @ A3
 Surveyed: THG
 Drawn: EJM
 Checked: MMR
 Plot Date: 20 Oct. 2012
 Computer File Ref: 223007_1 Dps(A).dwg

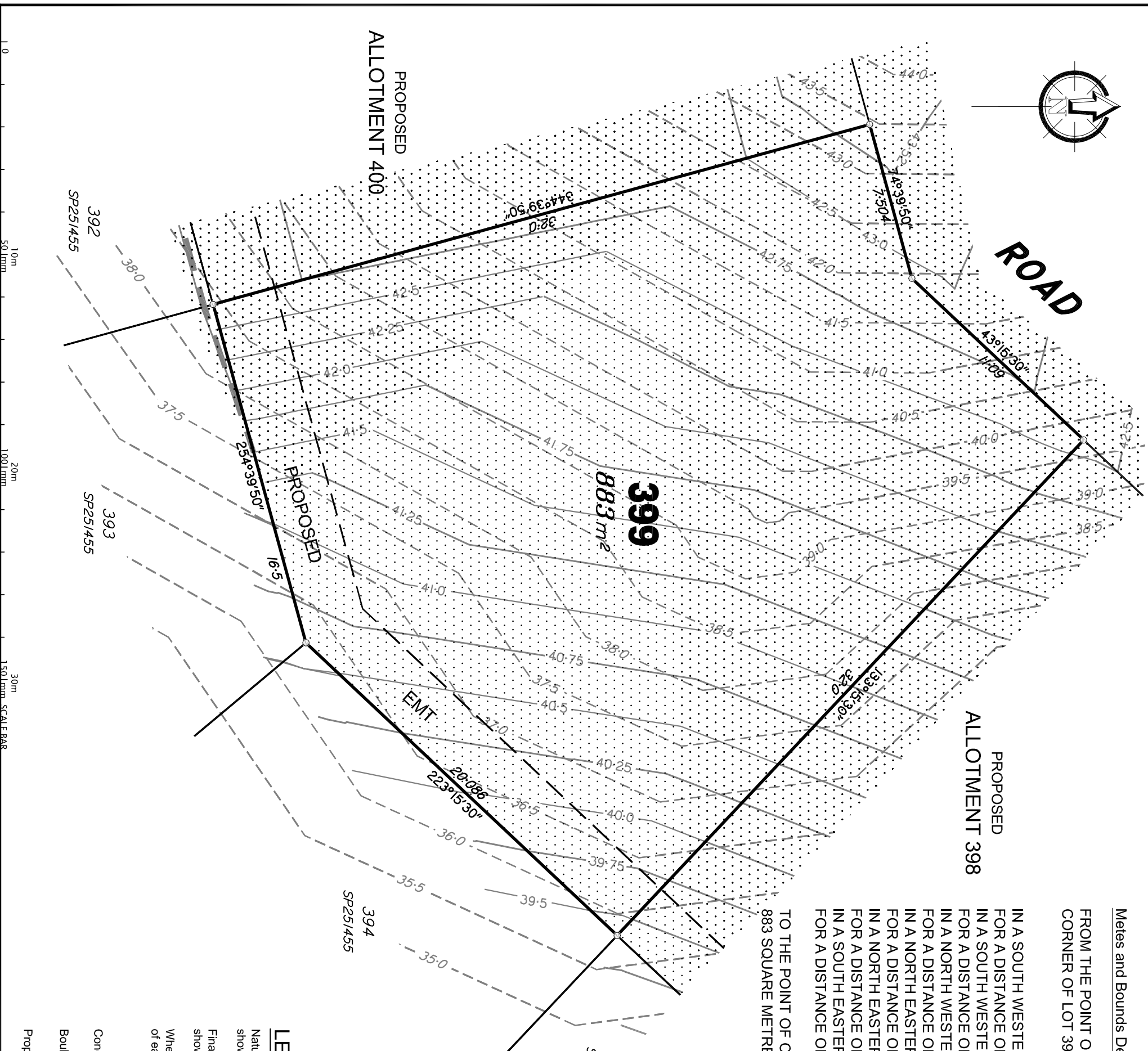
DISCLOSURE PLAN
 of Proposed Allotment
 398
 situated on
 Lot 509 on SP251455

THG
 BRISBANE GOLD COAST
 (07) 3666 4700 (07) 5574 0588
 Email: mail@thg.com.au www.thg.com.au
 ABN 58 518 746 490 Heblstrom Partners Pty Ltd trading as THG

Drawing No: **C5232-DP 398** Issue: **A**



ROAD



Metes and Bounds Description of Proposed Allotment 399
FROM THE POINT OF COMMENCEMENT AT THE NORTHERN MOST CORNER OF LOT 394 ON SP251455

IN A SOUTH WESTERLY DIRECTION AT A BEARING OF 223 DEGREES 15'30" FOR A DISTANCE OF 20.086 METRES (MORE OR LESS), THENCE IN A SOUTH WESTERLY DIRECTION AT A BEARING OF 254 DEGREES 39'50" FOR A DISTANCE OF 16.5 METRES (MORE OR LESS), THENCE IN A NORTH WESTERLY DIRECTION AT A BEARING OF 344 DEGREES 39'50" FOR A DISTANCE OF 32 METRES (MORE OR LESS), THENCE IN A NORTH WESTERLY DIRECTION AT A BEARING OF 74 DEGREES 39'50" FOR A DISTANCE OF 7.504 METRES (MORE OR LESS), THENCE IN A NORTH WESTERLY DIRECTION AT A BEARING OF 43 DEGREES 15'30" FOR A DISTANCE OF 11.09 METRES (MORE OR LESS), THENCE IN A SOUTH WESTERLY DIRECTION AT A BEARING OF 153 DEGREES 15'30" FOR A DISTANCE OF 32 METRES (MORE OR LESS),

TO THE POINT OF COMMENCEMENT AND CONTAINING AN AREA OF 883 SQUARE METRES (MORE OR LESS).

THERE ARE EARTHWORKS PROPOSED FOR ALLOTMENT 399

LEGEND

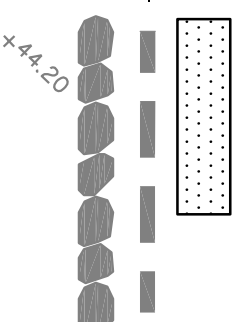
Natural surface contours based on A.H.D. datum at an interval of 0.5m, shown as: - - - 1.0 - - -
Final surface contours based on A.H.D. datum at an interval of 0.25m, shown as: - - - 1.0 - - -

Where applicable, areas to be filled from natural surface and proposed areas of earthworks fill on plans by Wood and Grieve Pty Ltd, are shown as:-

Concrete Sleeper Retaining Walls shown as:-

Boulder Retaining Walls shown as:-

Proposed surface level shown as:-



VANTAGE STAGE 7
For
PEET

IMPORTANT NOTES:

(These notes are an integral part of this plan)
This plan has been prepared for PEET for the purposes of a Disclosure Plan Under the Land Sales Act 1984.
It is not to be used by any other person or corporation or for any other purposes and is subject to the following limitations:
The allotment dimensions and area shown hereon are subject to final field survey and also to the requirements of Council and any other authority which may have requirements under any relevant legislation.
Please refer to the approved Development Application for conditions relating to the allotments and to approved Conditions of Work drawings for services location and possible easements.
The locations of retaining walls shown on this plan are indicative only, see detailed engineering drawings for the dimensions of any structures that may affect the lot.
Final surface contours shown hereon have been drawn from a field survey and are shown hereon as proposed contours. Final surface contours shown hereon have been drawn from survey by Hellstrom & Partners Pty Ltd.
Where final surface contours are not shown, no change to existing surface level is proposed.

THESE DESIGNS AND DRAWINGS ARE COPYRIGHT AND ARE NOT TO BE USED OR REPRODUCED WITHOUT THE WRITTEN PERMISSION OF THE DATA SOURCES

Data Sources
Cadastral Boundaries: C5232/CI Ref#
Final Surface Contours: Vantage Estate - Stage 7 FSL (in: 1264 157800_2.Dwg
Natural Surface Contours: 157800_2.Dwg
Engineering Design: 23520 C REF BASE.dwg

No	Revisions	Date	Chkd
A	Original	18/10/12	EM
No			

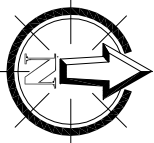
Parrish: AUCKLAND
County: CLINTON
Locality: NEW AUCKLAND
Local Authority: CLADSTONE REGIONAL MGA
Horizontal Meridian: AHD
Vertical Level Datum: AHD
Level Origin: PM95145
Scale: 1:200 @ A3
Surveyed: THG
Drawn: EJM
Checked: MMR
Plot Date: 20 Oct. 2012
Computer File Ref: 223007_1 Dps(A).dwg

DISCLOSURE PLAN
of Proposed Allotment
399
situated on
Lot 509 on SP251455

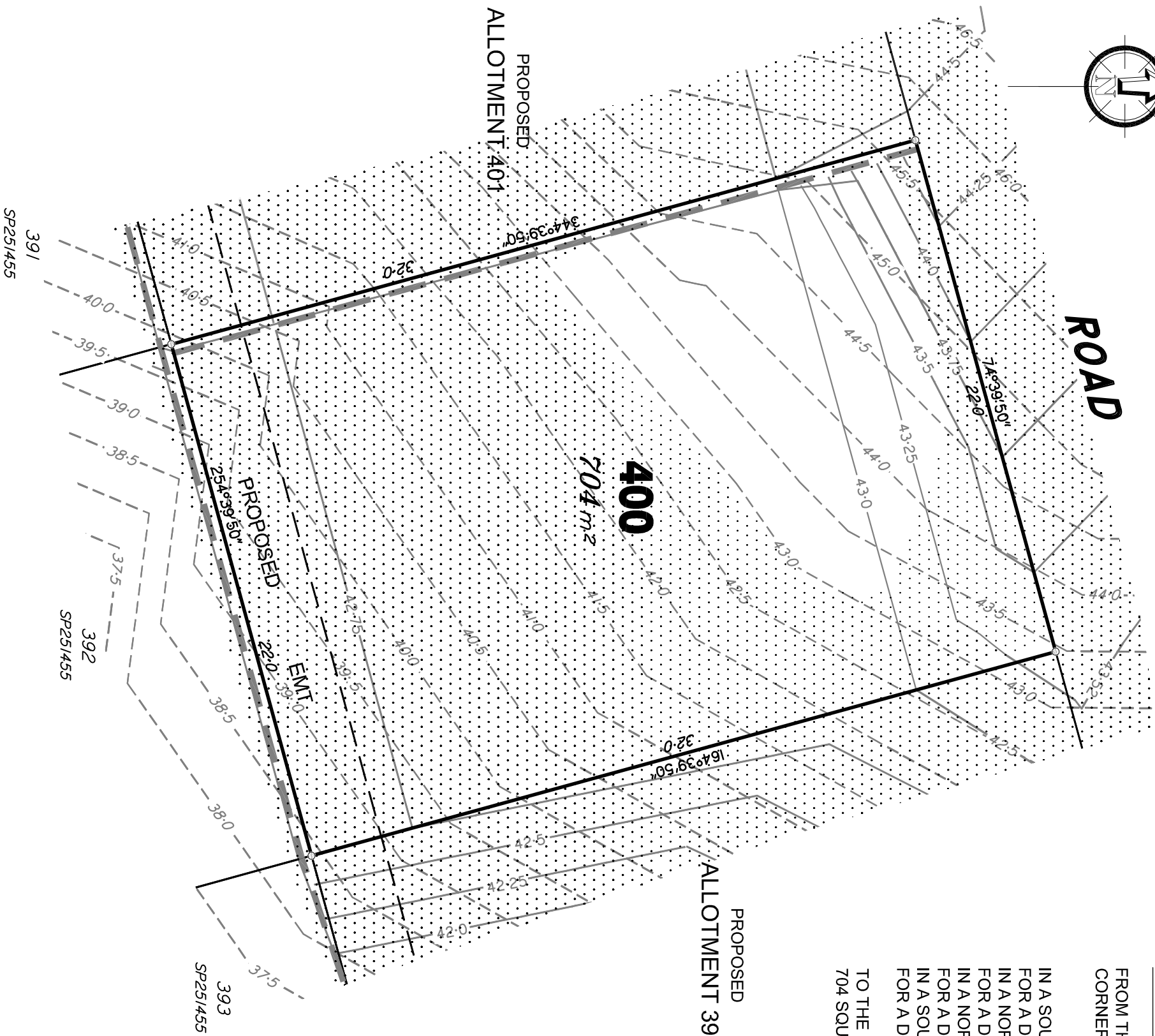


BRISBANE GOLD COAST
(07) 3666 4700 (07) 5574 0588
Email: mail@thg.com.au www.thg.com.au
ABN 55 918 746 490 Heblrom Partners Pty Ltd trading as THG

Drawing No **C5232-DP 399** Issue **A**



ROAD



Metes and Bounds Description of Proposed Allotment 400

FROM THE POINT OF COMMENCEMENT AT THE NORTH EASTERN MOST CORNER OF LOT 392 ON SP251455

IN A SOUTH WESTERLY DIRECTION AT A BEARING OF 254 DEGREES 39'50" FOR A DISTANCE OF 22 METRES (MORE OR LESS), THENCE IN A NORTH WESTERLY DIRECTION AT A BEARING OF 344 DEGREES 39'50" FOR A DISTANCE OF 32 METRES (MORE OR LESS), THENCE IN A NORTH EASTERLY DIRECTION AT A BEARING OF 74 DEGREES 39'50" FOR A DISTANCE OF 22 METRES (MORE OR LESS), THENCE IN A SOUTH EASTERLY DIRECTION AT A BEARING OF 164 DEGREES 39'50" FOR A DISTANCE OF 32 METRES (MORE OR LESS),

TO THE POINT OF COMMENCEMENT AND CONTAINING AN AREA OF 704 SQUARE METRES (MORE OR LESS).

PROPOSED
ALLOTMENT 399

PROPOSED
ALLOTMENT 401

THERE ARE EARTHWORKS
PROPOSED FOR ALLOTMENT 400

LEGEND

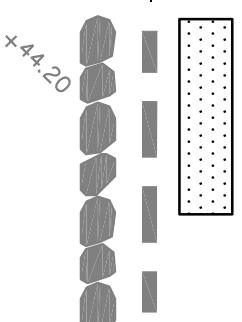
Natural surface contours based on A.H.D. datum at an interval of 0.5m, shown as: 1.0 0.5
Final surface contours based on A.H.D. datum at an interval of 0.25m, shown as: 1.0 0.5

Where applicable, areas to be filled from natural surface and proposed areas of earthworks fill on plans by Wood and Grieve Pty Ltd, are shown as:-

Concrete Sleeper Retaining Walls shown as:-

Boulder Retaining Walls shown as:-

Proposed surface level shown as:-



VANTAGE
STAGE 7
For
PEET

IMPORTANT NOTES:

(These notes are an integral part of this plan)
This plan has been prepared for PEET for the purposes of a Disclosure Plan Under the Land Sales Act 1984.
It is not to be used by any other person or corporation or for any other purposes and is subject to the following limitations:
The allotment dimensions and area shown hereon are subject to final field survey and also to the requirements of Council and any other authority which may have requirements under any relevant legislation.
Please refer to the approved Development Application for conditions relating to the allotments and to approved Conditions of Work drawings for services location and possible easements.
The locations of retaining walls shown on this plan are indicative only, see detailed engineering drawings for the dimensions of any structures that may affect the lot.
Final surface contours shown hereon have been drawn from field notes and have not been independently checked. Final surface contours shown hereon have been drawn from survey by Hellstrom & Partners Pty Ltd.
Where final surface contours are not shown, no change to existing surface level is proposed.

THESE DESIGNS AND DRAWINGS ARE COPYRIGHT AND ARE NOT TO BE USED OR REPRODUCED WITHOUT THE WRITTEN PERMISSION OF THE

Data Sources
Cadastral Boundaries: C5232\CI Ref#
Final Surface Contours: Vantage Estate - Stage 7 FSL (in: 124 Natural Surface Contours 157800_2.Dwg
Engineering Design: 23520 C REF BASE.dwg

No.	Revisions	Date	Chkd
A	Original	18/10/12	EM

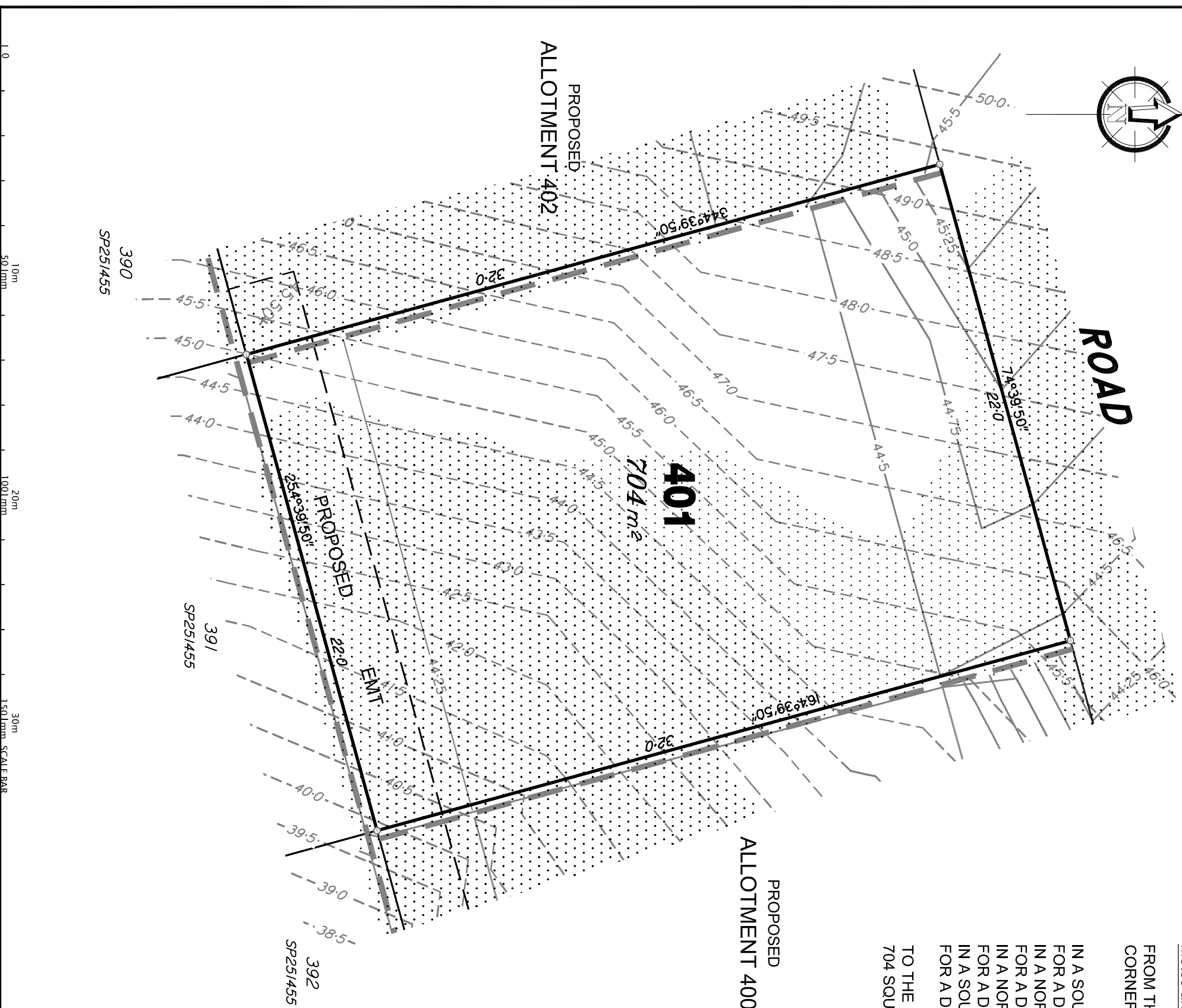
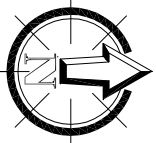
Parish: AUCKLAND
County: CLINTON
Locality: NEW AUCKLAND
Local Authority: CLADSTONE REGIONAL MGA
Horizontal Meridian: MGA
Vertical Level Datum: AHD
Level Origin: PM95145
Scale: 1:200 @ A3
Surveyed: THG
Drawn: EJM
Checked: MMR
Plot Date: 20 Oct. 2012
Computer File Ref: 223007_1.Dwg(A).dwg

DISCLOSURE PLAN
of Proposed Allotment
400
situated on
Lot 509 on SP251455



BRISBANE GOLD COAST
(07) 3666 4700 (07) 5574 0588
Email: mail@thg.com.au www.thg.com.au
ABN 55 918 746 490 Heblrom Partners Pty Ltd trading as THG

Drawing No: C5232-DP 400 Issue: A



Mets and Bounds Description of Proposed Allotment 401
 FROM THE POINT OF COMMENCEMENT AT THE NORTH EASTERN MOST CORNER OF LOT 391 ON SP251455

IN A SOUTH WESTERLY DIRECTION AT A BEARING OF 254 DEGREES 39'50" FOR A DISTANCE OF 22 METRES (MORE OR LESS), THENCE IN A NORTH WESTERLY DIRECTION AT A BEARING OF 344 DEGREES 39'50" FOR A DISTANCE OF 32 METRES (MORE OR LESS), THENCE IN A NORTH EASTERLY DIRECTION AT A BEARING OF 74 DEGREES 39'50" FOR A DISTANCE OF 22 METRES (MORE OR LESS), THENCE IN A SOUTH EASTERLY DIRECTION AT A BEARING OF 164 DEGREES 39'50" FOR A DISTANCE OF 32 METRES (MORE OR LESS),

TO THE POINT OF COMMENCEMENT AND CONTAINING AN AREA OF 704 SQUARE METRES (MORE OR LESS).

THERE ARE EARTHWORKS PROPOSED FOR ALLOTMENT 401

LEGEND

Natural surface contours based on A.H.D. datum at an interval of 0.5m, shown as: --- 1.0 ---
 Final surface contours based on A.H.D. datum at an interval of 0.25m, shown as: --- 1.0 ---

Where applicable, areas to be filled from natural surface and proposed areas of earthworks fill on plans by Wood and Grieve Pty Ltd, are shown as:-

Concrete Sleeper Retaining Walls shown as:-

Boulder Retaining Walls shown as:-

Proposed surface level shown as:-



x 44.20

VANTAGE
 STAGE 7
 For
PEET

IMPORTANT NOTES:
 (These notes are an integral part of this plan)
 This plan has been prepared for PEET for the purposes of a Disclosure Plan Under the Land Sales Act 1984.
 It is not to be used by any other person or corporation or for any other purposes and is subject to the following limitations:
 The allotment dimensions and area shown hereon are subject to final field survey and also to the requirements of Council and any other authority which may have requirements under any relevant legislation.
 Please refer to the approved Development Application for conditions relating to the allotments and to approved Works drawings for services location and possible easements.
 The locations of retaining walls shown on this plan are indicative only, see detailed engineering drawings for the dimensions of any structures that may affect the lot.
 Final surface contours shown hereon have been drawn from final field survey and are shown hereon as shown hereon have been drawn from survey by Hillstrom & Partners Pty Ltd.
 Where final surface contours are not shown, no change to existing surface level is proposed.

THESE DESIGNS AND DRAWINGS ARE COPYRIGHTED AND ARE NOT TO BE USED OR REPRODUCED WITHOUT THE WRITTEN PERMISSION OF THE DATA SOURCES
 Cadastral Boundaries: C5232\CI Rev#
 Final Surface Contours: Vantage Estate - Stage 7 FSL (in: 1204 Natural Surface Contours 157800_2.Dwg
 Engineering Design: 23520 CREP BASE.dwg

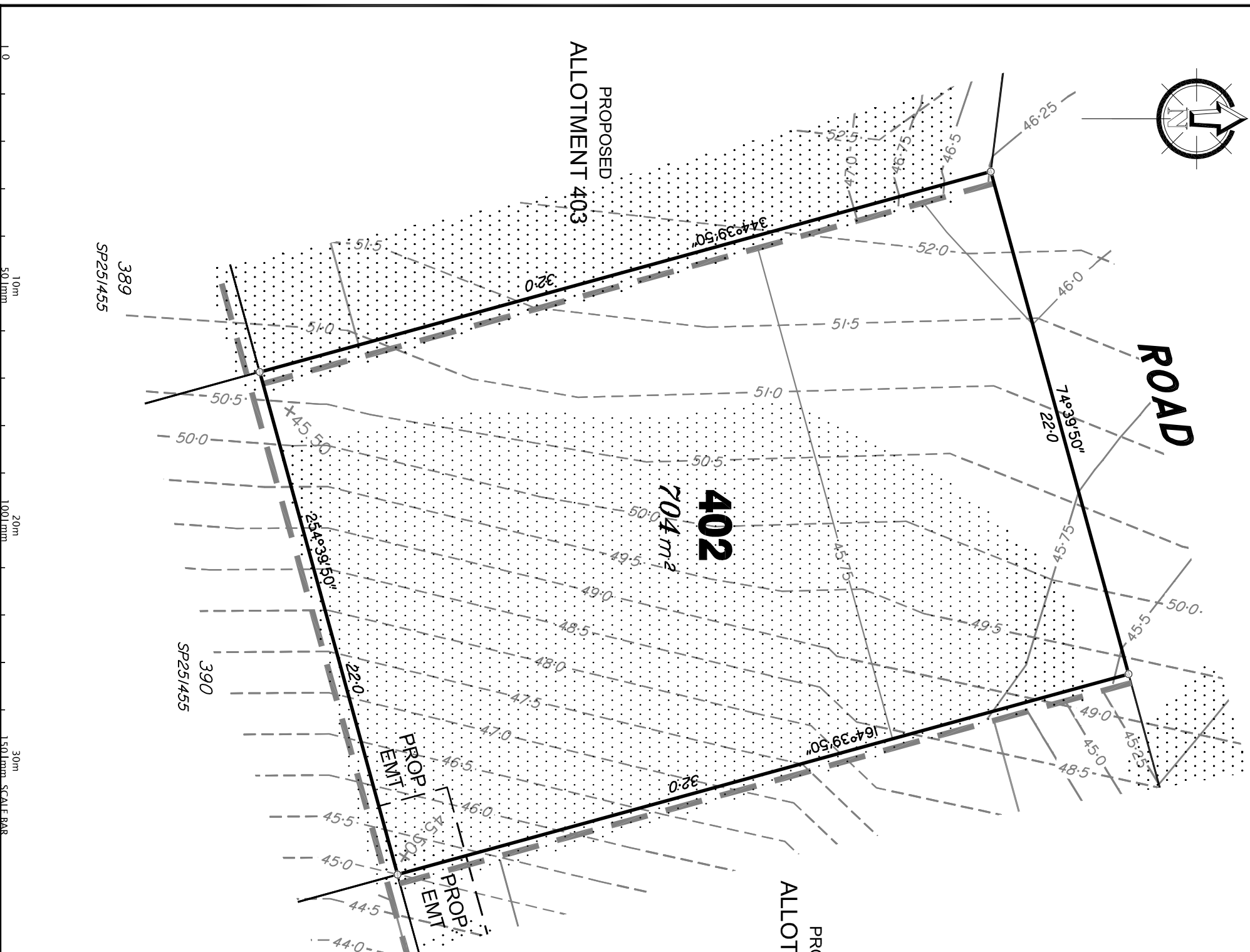
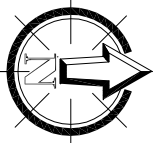
No.	Revisions	Date	Chkd
A	Original	18/10/12	EM

Parish: AUCKLAND
 County: CLINTON
 Locality: NEW AUCKLAND
 Local Authority: CLADSTONE REGIONAL MGA
 Horizontal Meridian: MGA
 Vertical Level Datum: AHD
 Level Origin: PM95145
 Scale: 1:200 @ A3
 Surveyed: THG
 Drawn: EJM
 Checked: MMR
 Plot Date: 20 Oct. 2012
 Computer File Ref: 223007_1.Dwg(A).dwg

DISCLOSURE PLAN
 of Proposed Allotment
 401
 situated on
 Lot 509 on SP251455

THG
 BRISBANE GOLD COAST
 (07) 3666 4700 (07) 5574 0588
 Email: mail@thg.com.au www.thg.com.au
 ABN 55 918 746 490 Heblromm Partners Pty Ltd trading as THG

Drawing No: C5232-DP 401 Issue: A



Metes and Bounds Description of Proposed Allotment 402

FROM THE POINT OF COMMENCEMENT AT THE NORTH EASTERN MOST CORNER OF LOT 390 ON SP251455

IN A SOUTH WESTERLY DIRECTION AT A BEARING OF 254 DEGREES 39'50" FOR A DISTANCE OF 22 METRES (MORE OR LESS), THENCE IN A NORTH WESTERLY DIRECTION AT A BEARING OF 344 DEGREES 39'50" FOR A DISTANCE OF 32 METRES (MORE OR LESS), THENCE IN A NORTH EASTERLY DIRECTION AT A BEARING OF 74 DEGREES 39'50" FOR A DISTANCE OF 22 METRES (MORE OR LESS), THENCE IN A SOUTH EASTERLY DIRECTION AT A BEARING OF 164 DEGREES 39'50" FOR A DISTANCE OF 32 METRES (MORE OR LESS),

TO THE POINT OF COMMENCEMENT AND CONTAINING AN AREA OF 704 SQUARE METRES (MORE OR LESS).

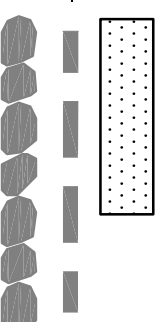
THERE ARE EARTHWORKS PROPOSED FOR ALLOTMENT 402

LEGEND

Natural surface contours based on A.H.D. datum at an interval of 0.5m, shown as: 1:0 Final surface contours based on A.H.D. datum at an interval of 0.25m, shown as: 1:0

Where applicable, areas to be filled from natural surface and proposed areas of earthworks fill on plans by Wood and Grieve Pty Ltd, are shown as:-

Concrete Sleeper Retaining Walls shown as:-



Boulder Retaining Walls shown as:-



Proposed surface level shown as:-

VANTAGE STAGE 7
For
PEET

IMPORTANT NOTES:

(These notes are an integral part of this plan)
This plan has been prepared for PEET for the purposes of a Disclosure Plan Under the Land Sales Act 1984.
It is not to be used by any other person or corporation or for any other purposes and is subject to the following limitations:
The alignment, dimensions and area shown hereon are subject to final field survey and also to the requirements of Council and any other authority which may have requirements under any relevant legislation.
Please refer to the approved Development Application for conditions relating to the Alignments and to approved earthworks drawings for services location and possible easements.
The locations of retaining walls shown on this plan are indicative only, see detailed engineering drawings for the dimensions of any structures that may affect the lot.
Final surface contours shown hereon have been drawn from ground level contours shown hereon, and the contours shown hereon have been drawn from survey by Hellstrom & Partners Pty Ltd.
Where final surface contours are not shown, no change to existing surface level is proposed.

THESE DESIGNS AND DRAWINGS ARE COPYRIGHTED AND ARE NOT TO BE USED OR REPRODUCED WITHOUT THE WRITTEN PERMISSION OF THE DATA SOURCES

Data Source	CS232/CI Rev#
Cadastral Boundaries	Vantage Estate - Stage 7 P/L (in: 1204
Final Surface Contours	157800_2.Dwg
Natural Surface Contours	23520 C REF BASE.dwg
Engineering Design	

No.	Revisions	Date	Chkd
A	Original	18/10/12	EM

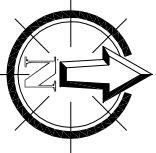
Parish: AUCKLAND
County: CLINTON
Locality: NEW AUCKLAND
Local Authority: CLADSTONE REGIONAL
Horizontal Meridian: MGA
Vertical Level Datum: AHD
Level Origin: PM95145
Scale: 1:200 @ A3
Surveyed: THG
Drawn: EJM
Checked: MMR
Plot Date: 20 Oct. 2012
Computer File Ref: 223007_1 Dps(A).dwg

DISCLOSURE PLAN
of Proposed Allotment
402
situated on
Lot 509 on SP251455

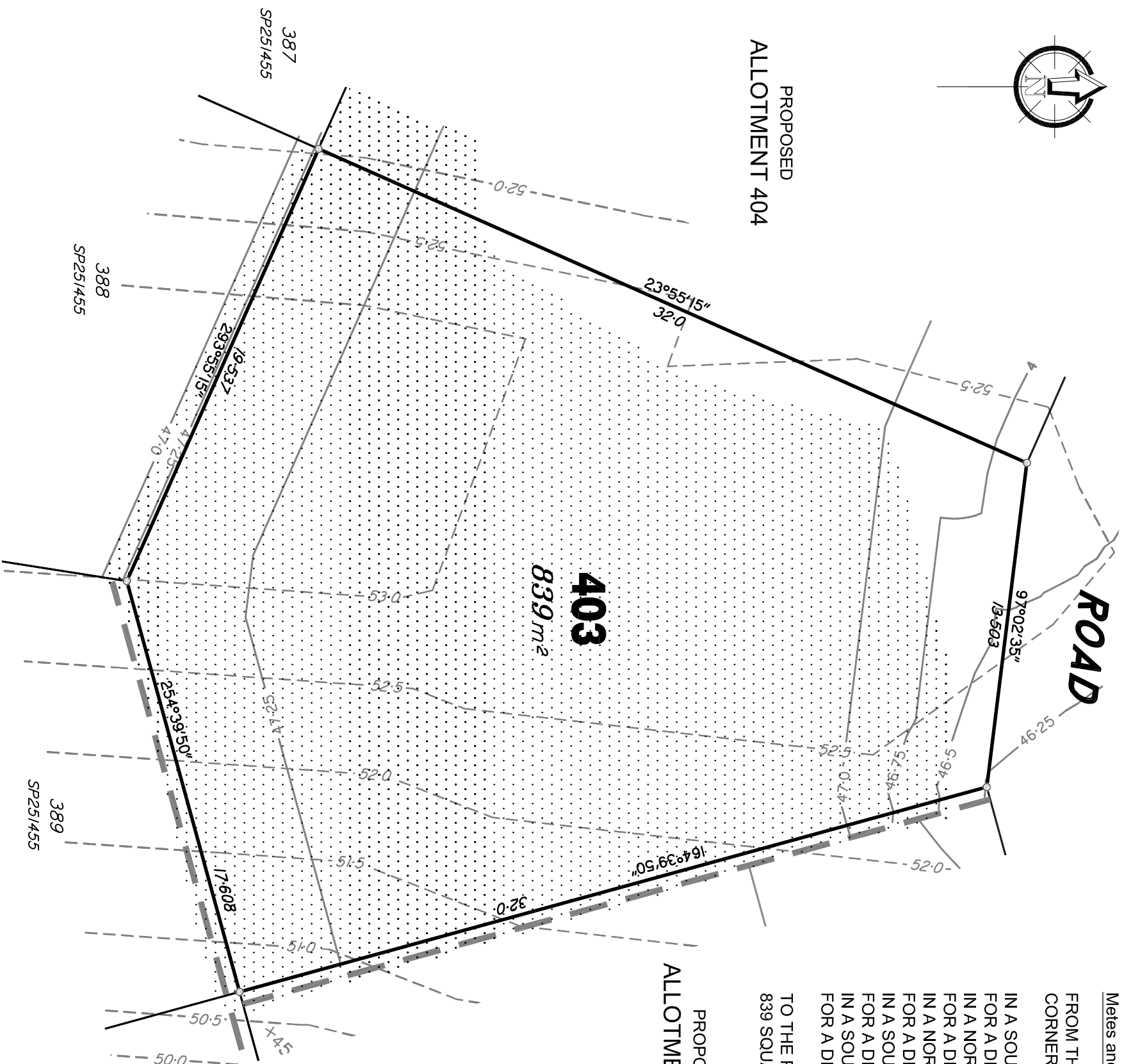


BRISBANE GOLD COAST
(07) 3666 4700 (07) 5574 0588
Email: mail@thg.com.au www.thg.com.au
ABN 55 918 746 490 Heblrom Partners Pty Ltd trading as THG

Drawing No: C5232-DP 402 Issue: A



PROPOSED
ALLOTMENT 404



Metes and Bounds Description of Proposed Allotment 403
FROM THE POINT OF COMMENCEMENT AT THE NORTH EASTERN MOST CORNER OF LOT 389 ON SP251455

IN A SOUTH WESTERLY DIRECTION AT A BEARING OF 254 DEGREES 39'50" FOR A DISTANCE OF 17.608 METRES (MORE OR LESS), THENCE IN A NORTH WESTERLY DIRECTION AT A BEARING OF 293 DEGREES 55'15" FOR A DISTANCE OF 19.537 METRES (MORE OR LESS), THENCE IN A NORTH EASTERLY DIRECTION AT A BEARING OF 23 DEGREES 55'15" FOR A DISTANCE OF 32 METRES (MORE OR LESS), THENCE IN A SOUTH EASTERLY DIRECTION AT A BEARING OF 97 DEGREES 02'35" FOR A DISTANCE OF 13.503 METRES (MORE OR LESS), THENCE IN A SOUTH EASTERLY DIRECTION AT A BEARING OF 164 DEGREES 39'50" FOR A DISTANCE OF 32 METRES (MORE OR LESS),

TO THE POINT OF COMMENCEMENT AND CONTAINING AN AREA OF 839 SQUARE METRES (MORE OR LESS).

PROPOSED
ALLOTMENT 402

LEGEND

- Natural surface contours based on A.H.D. datum at an interval of 0.5m, shown as: 1:0
- Final surface contours based on A.H.D. datum at an interval of 0.25m, shown as: 1:0
- Where applicable, areas to be filled from natural surface and proposed areas of earthworks fill on plans by Wood and Gheve Pty Ltd, are shown as:
- Concrete Sleeper Retaining Walls shown as:
- Boulder Retaining Walls shown as:
- Proposed surface level shown as: +44.20

THERE ARE EARTHWORKS
PROPOSED FOR ALLOTMENT 403

**VANTAGE
STAGE 7
For
PEET**

IMPORTANT NOTES:

These notes are an integral part of this plan.
This plan has been prepared for PEET for the purposes of a Disclosure Plan Under the Land Sales Act 1984.
It is not to be used by any other person or corporation or for any other purposes and is subject to the following limitations:
The allotment dimensions and area shown hereon are subject to final field survey and also to the requirements of Council and any other authority which may have requirements under any relevant legislation.
Please refer to the approved Development Application for conditions relating to the Allotments and to approved Conditions of Work drawings for services location and possible easements.
The locations of retaining walls shown on this plan are indicative only, see detailed engineering drawings for the dimensions of any structures that may affect the Lot.
Final surface contours shown hereon have been drawn from the final field survey and are not to be used for any other purposes hereon have been drawn from survey by Hellstrom & Partners Pty Ltd.
Where final surface contours are not shown, no change to existing surface level is proposed.

THESE DESIGNS AND DRAWINGS ARE COPYRIGHTED AND ARE NOT TO BE USED OR REPRODUCED WITHOUT THE WRITTEN PERMISSION OF THE SURVEYOR

Data Sources

Cadastral Boundaries	C5232\CI Ref#
Final Surface Contours	Vantage Estate - Stage 7 FSL (in: 126a 157800_2.Dwg)
Natural Surface Contours	157800_2.Dwg
Engineering Design	23520 C REF BASE.dwg

No.	Revisions	Date	Chkd
A	Original	18/10/12	EM

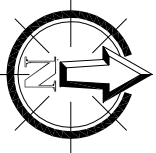
Parrish: AUCKLAND
County: CLINTON
Locality: NEW AUCKLAND
Local Authority: CLADSTONE REGIONAL
Horizontal Meridian: MGA
Vertical Level Datum: AHD
Level Origin: PM95145
Scale: 1:200 @ A3
Surveyed: THG
Drawn: EJM
Checked: MMR
Plot Date: 20 Oct. 2012
Computer File Ref: 223007_1.DPs(A).dwg

DISCLOSURE PLAN
of Proposed Allotment
403
situated on
Lot 509 on SP251455



BRISBANE GOLD COAST
(07) 3666 4700 (07) 5574 0588
Email: mail@thg.com.au www.thg.com.au
ABN 55 918 746 590 Helidon/Farmer Pty Ltd trading as THG

Drawing No: C5232-DP 403 Issue: A

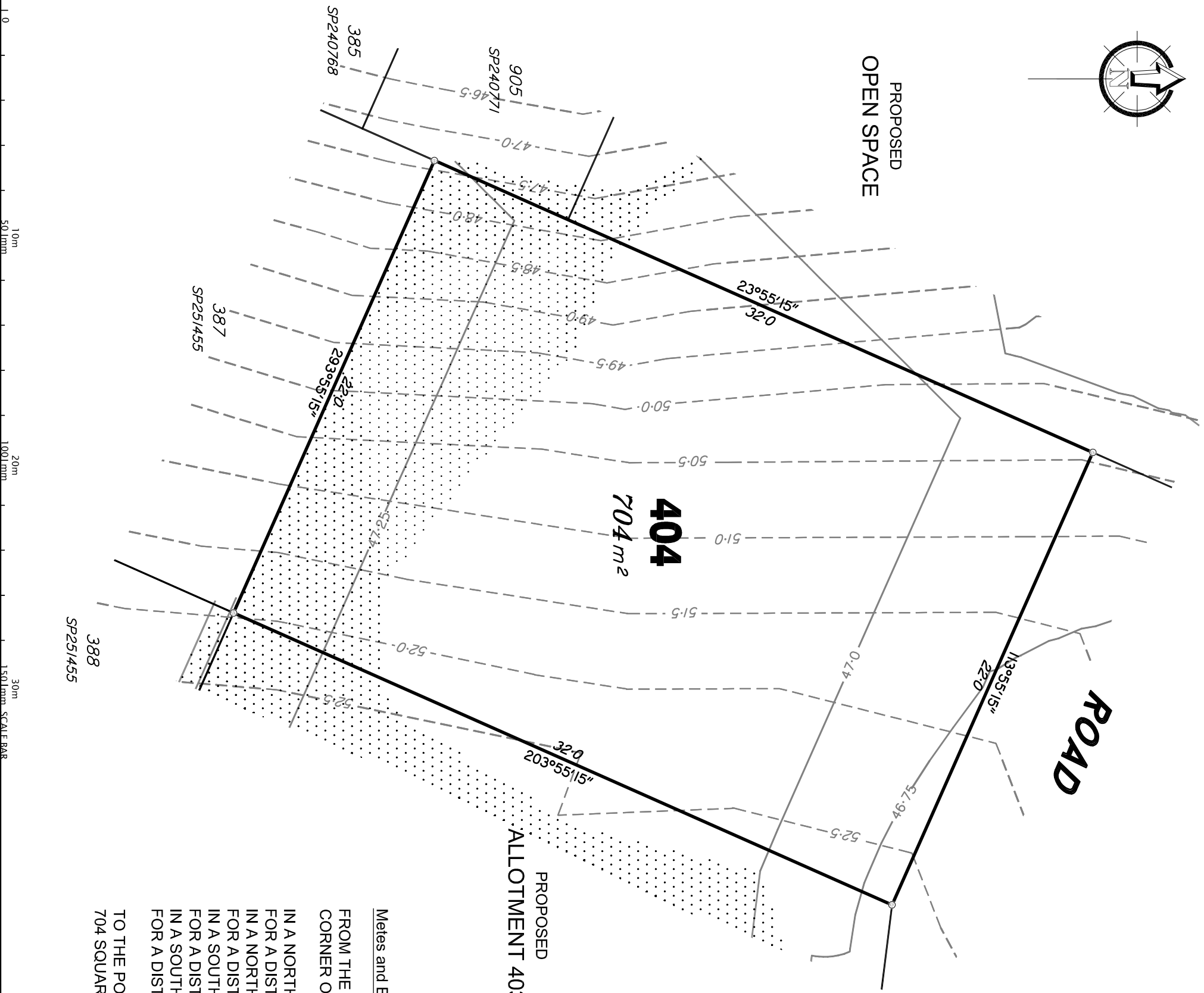


PROPOSED
OPEN SPACE

ROAD

404
704 m²

PROPOSED
ALLOTMENT 403



10m 50.0mm
20m 100.0mm
30m 150.0mm SCALE BAR

LEGEND

- Natural surface contours based on A.H.D. datum at an interval of 0.5m, shown as: 1:0
- Final surface contours based on A.H.D. datum at an interval of 0.25m, shown as: 1:0
- Where applicable, areas to be filled from natural surface and proposed areas of earthworks fill on plans by Wood and Grievé Pty Ltd, are shown as:-
- Concrete Sleeper Retaining Walls shown as:-
- Boulder Retaining Walls shown as:-
- Proposed surface level shown as:- +44.20

THERE ARE EARTHWORKS
PROPOSED FOR ALLOTMENT 404

Mets and Bounds Description of Proposed Allotment 404

FROM THE POINT OF COMMENCEMENT AT THE NORTH EASTERN MOST CORNER OF LOT 387 ON SP251455

IN A NORTH WESTERLY DIRECTION AT A BEARING OF 293 DEGREES 55'15" FOR A DISTANCE OF 22 METRES (MORE OR LESS), THENCE IN A NORTH EASTERLY DIRECTION AT A BEARING OF 23 DEGREES 55'15" FOR A DISTANCE OF 32 METRES (MORE OR LESS), THENCE IN A SOUTH EASTERLY DIRECTION AT A BEARING OF 113 DEGREES 55'15" FOR A DISTANCE OF 22 METRES (MORE OR LESS), THENCE IN A SOUTH WESTERLY DIRECTION AT A BEARING OF 203 DEGREES 55'15" FOR A DISTANCE OF 32 METRES (MORE OR LESS),

TO THE POINT OF COMMENCEMENT AND CONTAINING AN AREA OF 704 SQUARE METRES (MORE OR LESS).

VANTAGE
STAGE 7
For
PEET

IMPORTANT NOTES:
(These notes are an integral part of this plan)
This plan has been prepared for PEET for the purposes of a Disclosure Plan Under the Land Sales Act 1984.
It is not to be used by any other person or corporation or for any other purposes and is subject to the following limitations:
The Allotment dimensions and area shown hereon are subject to final field survey and also to the requirements of Council and any other authority which may have requirements under any relevant legislation.
Please refer to the approved Development Application for conditions relating to the Allotments and to approved earthworks drawings for services location and possible easements.
The locations of retaining walls shown on this plan are indicative only, see detailed engineering drawings for the dimensions of any structures that may affect the Lot.
Final surface contours shown hereon have been drawn from a final field survey and the proposed earthworks shown hereon have been drawn from survey by Hellstrom & Partners Pty Ltd.
Where final surface contours are not shown, no change to existing surface level is proposed.

THESE DESIGNS AND DRAWINGS ARE COPYRIGHT AND ARE NOT TO BE USED OR REPRODUCED WITHOUT THE WRITTEN PERMISSION OF THE SURVEYOR

Data Sources
Cadastral Boundaries: C5232\CI Ref#
Final Surface Contours: Vantage Estate - Stage 7 FSL (in: 1264 157800_2.dwg)
Natural Surface Contours: 157800_2.dwg
Engineering Design: 23520 C REF BASE.dwg

No.	Revisions	Date	Chkd
A	Original	18/10/12	EM

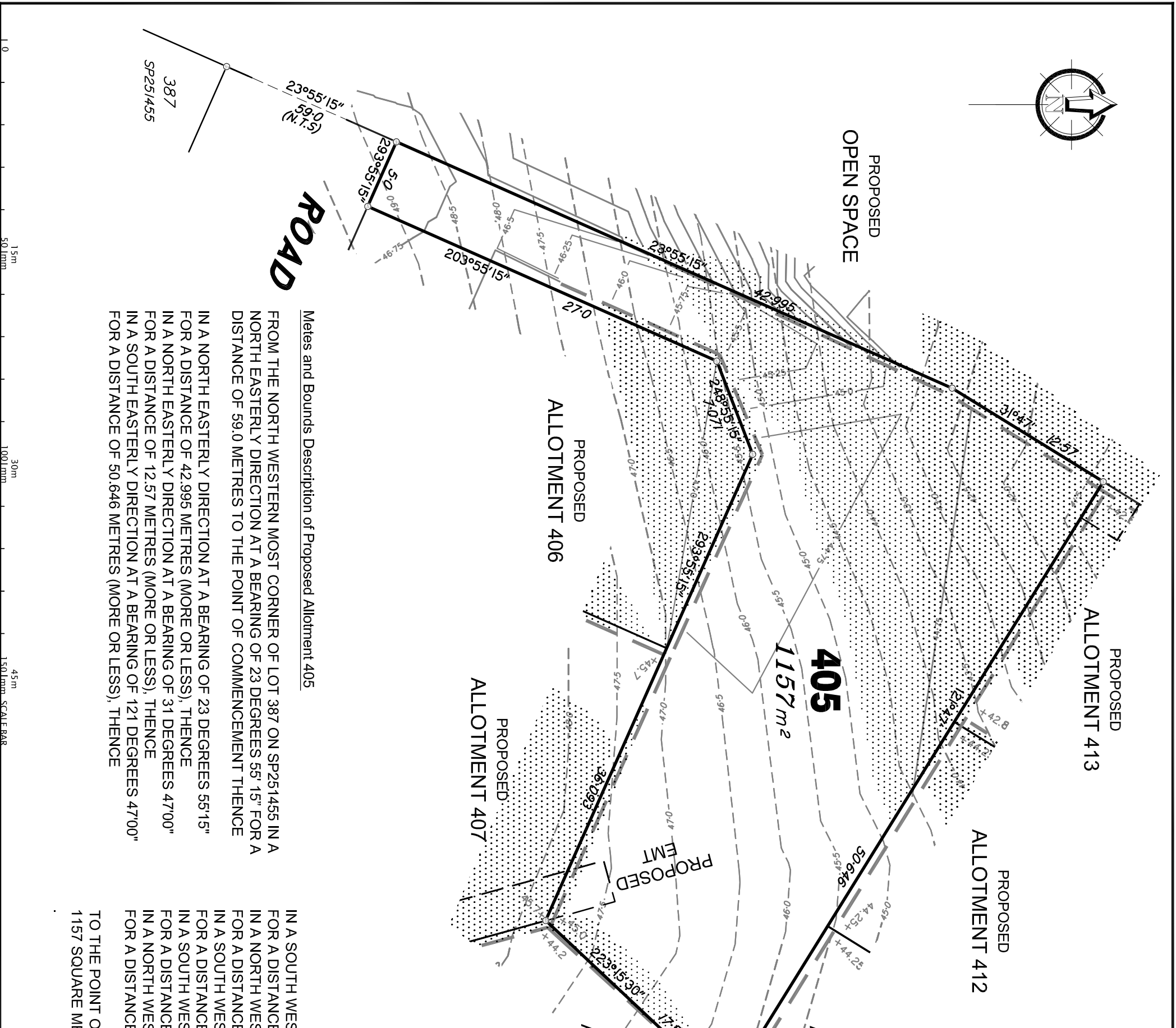
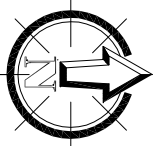
Parrish: AUCKLAND
County: CLINTON
Locality: NEW AUCKLAND
Local Authority: CLADSTONE REGIONAL
Horizontal Meridian: MGA
Vertical Level Datum: AHD
Level Origin: PM95145
Scale: 1:200 @ A3
Surveyed: THG
Drawn: EJM
Checked: MMR
PLOT Date: 20 Oct. 2012
Computer File Ref: 223007_1.Dps(A).dwg

DISCLOSURE PLAN
of Proposed Allotment
404
situated on
Lot 509 on SP251455



BRISBANE (07) 3666 4700
GOLD COAST (07) 5574 0588
Email: mail@thg.com.au www.thg.com.au
ABN 55 918 746 590 Helidon Farm Pty Ltd trading as THG

Drawing No: **C5232-DP 404** Issue: **A**



Metes and Bounds Description of Proposed Allotment 405

FROM THE NORTH WESTERN MOST CORNER OF LOT 387 ON SP251455 IN A NORTH EASTERLY DIRECTION AT A BEARING OF 23 DEGREES 55' 15" FOR A DISTANCE OF 59.0 METRES TO THE POINT OF COMMENCEMENT THENCE

IN A NORTH EASTERLY DIRECTION AT A BEARING OF 23 DEGREES 55'15" FOR A DISTANCE OF 42.995 METRES (MORE OR LESS), THENCE

IN A NORTH EASTERLY DIRECTION AT A BEARING OF 31 DEGREES 47'00" FOR A DISTANCE OF 12.57 METRES (MORE OR LESS), THENCE

IN A SOUTH EASTERLY DIRECTION AT A BEARING OF 47'00" FOR A DISTANCE OF 50.646 METRES (MORE OR LESS), THENCE

IN A SOUTH WESTERLY DIRECTION AT A BEARING OF 223 DEGREES 15'30" FOR A DISTANCE OF 17.506 METRES (MORE OR LESS), THENCE

IN A NORTH WESTERLY DIRECTION AT A BEARING OF 293 DEGREES 55'15" FOR A DISTANCE OF 36.093 METRES (MORE OR LESS), THENCE

IN A SOUTH WESTERLY DIRECTION AT A BEARING OF 248 DEGREES 55'15" FOR A DISTANCE OF 7.071 METRES (MORE OR LESS), THENCE

IN A SOUTH WESTERLY DIRECTION AT A BEARING OF 203 DEGREES 55'15" FOR A DISTANCE OF 27 METRES (MORE OR LESS), THENCE

IN A NORTH WESTERLY DIRECTION AT A BEARING OF 293 DEGREES 55'15" FOR A DISTANCE OF 5 METRES (MORE OR LESS),

THERE ARE EARTHWORKS PROPOSED FOR ALLOTMENT 405 TO THE POINT OF COMMENCEMENT AND CONTAINING AN AREA OF 1157 SQUARE METRES (MORE OR LESS).

LEGEND

- Natural surface contours based on A.H.D. datum at an interval of 0.5m. shown as: 1:0
- Final surface contours based on A.H.D. datum at an interval of 0.25m. shown as: 1:0
- Where applicable, areas to be filled from natural surface and proposed areas of earthworks fill on plans by Wood and Grievé Pty Ltd. are shown as:-
- Concrete Sleeper Retaining Walls shown as:-
- Boulder Retaining Walls shown as:-
- Proposed surface level shown as:-

VANTAGE
STAGE 7
For
PEET

IMPORTANT NOTES:

These notes are an integral part of this plan. This plan has been prepared for PEET for the purposes of a Disclosure Plan Under the Land Sales Act 1984. It is not to be used by any other person or corporation or for any other purposes and is subject to the following limitations: The allotment dimensions and area shown hereon are subject to final field survey and also to the requirements of Council and any other authority which may have requirements under any relevant legislation. Please refer to the approved Development Application for conditions relating to the allotments and to approved Construction Works drawings for services location and possible easements. The locations of retaining walls shown on this plan are indicative only, see detailed engineering drawings for the dimensions of any structures that may affect the lot. Final surface contours shown hereon have been drawn from ground level topographic contours prepared by Hellstrom & Partners Pty Ltd. Where final surface contours are not shown, no change to existing surface level is proposed.

THESE DESIGNS AND DRAWINGS ARE COPYRIGHT AND ARE NOT TO BE USED OR REPRODUCED WITHOUT THE WRITTEN PERMISSION OF THE DATA SOURCES

Cadastral Boundaries	CS232\CI Ref#
Final Surface Contours	Vantage Estate - Stage 7 FSL (m).126a
Natural Surface Contours	157800_2.Dwg
Engineering Design	23520 C REF BASE.dwg

No.	Revisions	Date	Chkd
A	Original	18/10/12	EM

Parish: AUCKLAND
County: CLINTON
Locality: NEW AUCKLAND
Local Authority: CLADSTONE REGIONAL
Horizontal Meridian: MGA
Vertical Level Datum: AHD
Level Origin: PM95145
Scale: 1:300 @ A3
Surveyed: THG
Drawn: EJM
Checked: MMR
Plot Date: 20 Oct. 2012
Computer File Ref: 223007_1 Dps(A).dwg

DISCLOSURE PLAN
of Proposed Allotment
405
situated on
Lot 509 on SP251455



BRISBANE GOLD COAST
(07) 3666 4700 (07) 5574 0588
Email: mail@thg.com.au www.thg.com.au
ABN 58 918 746 590 Helidon Farmes Pty Ltd trading as THG
Drawing No: C5232-DP 405 Issue: A

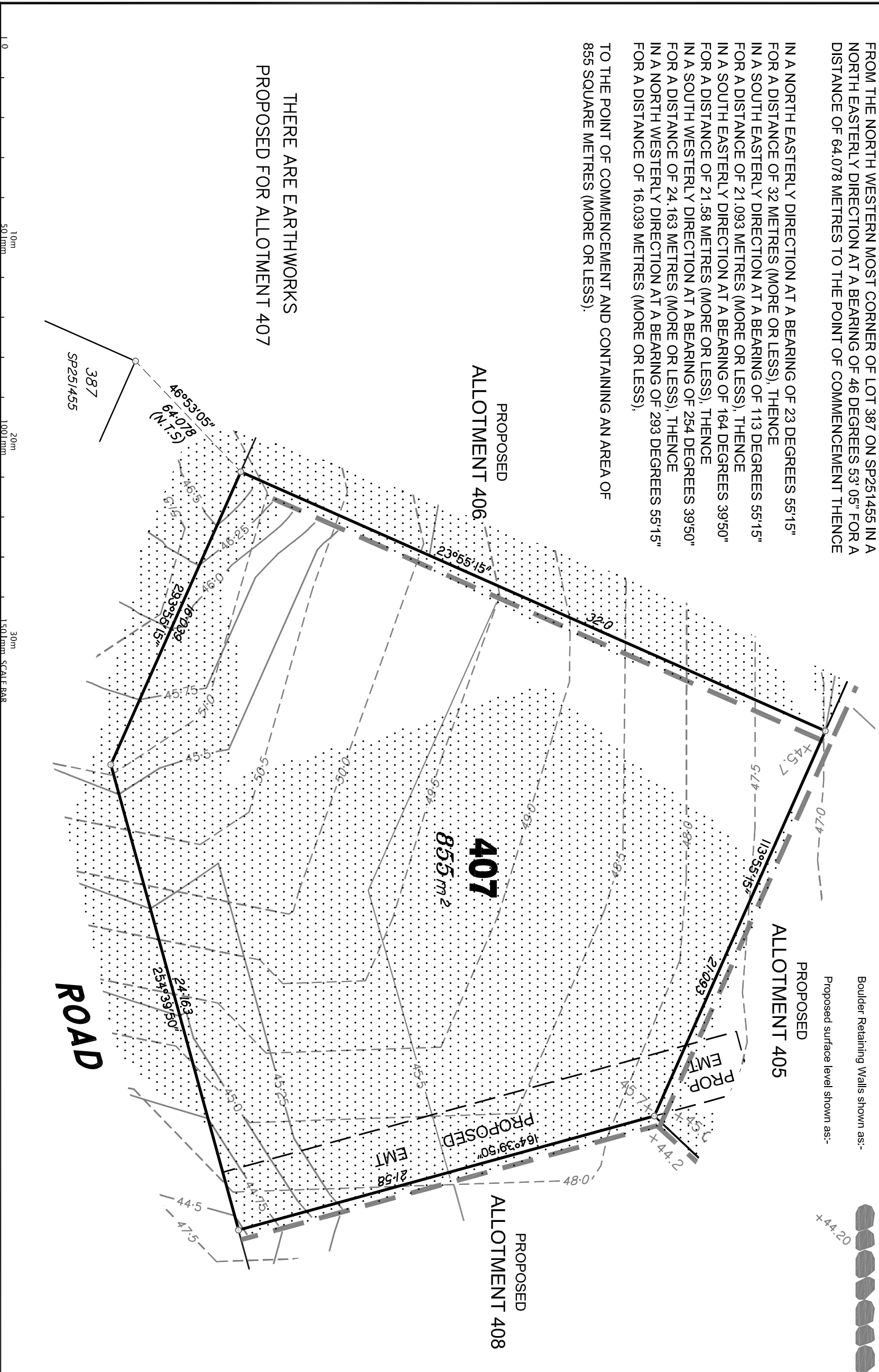


Metes and Bounds Description of Proposed Allotment 407

FROM THE NORTH WESTERN MOST CORNER OF LOT 387 ON SP251455 IN A NORTH EASTERLY DIRECTION AT A BEARING OF 46 DEGREES 53' 05" FOR A DISTANCE OF 64.078 METRES TO THE POINT OF COMMENCEMENT THENCE

IN A NORTH EASTERLY DIRECTION AT A BEARING OF 23 DEGREES 55' 15" FOR A DISTANCE OF 32 METRES (MORE OR LESS), THENCE
 IN A SOUTH EASTERLY DIRECTION AT A BEARING OF 113 DEGREES 55' 15" FOR A DISTANCE OF 21.093 METRES (MORE OR LESS), THENCE
 IN A SOUTH EASTERLY DIRECTION AT A BEARING OF 164 DEGREES 55' 15" FOR A DISTANCE OF 21.58 METRES (MORE OR LESS), THENCE
 IN A SOUTH WESTERLY DIRECTION AT A BEARING OF 254 DEGREES 39' 50" FOR A DISTANCE OF 24.163 METRES (MORE OR LESS), THENCE
 IN A NORTH WESTERLY DIRECTION AT A BEARING OF 293 DEGREES 55' 15" FOR A DISTANCE OF 16.039 METRES (MORE OR LESS),
 TO THE POINT OF COMMENCEMENT AND CONTAINING AN AREA OF 855 SQUARE METRES (MORE OR LESS).

THERE ARE EARTHWORKS
 PROPOSED FOR ALLOTMENT 407



LEGEND

Natural surface contours based on A.H.D. datum at an interval of 0.5m,
 shown as: --- 1:0 ---

Final surface contours based on A.H.D. datum at an interval of 0.25m,
 shown as: --- 1:0 ---

Where applicable, areas to be filled from natural surface and proposed areas
 of earthworks fill on plans by Wood and Gieve Pty Ltd, are shown as:-

Concrete Sleeper Retaining Walls shown as:-



Boulder Retaining Walls shown as:-



Proposed surface level shown as:-

PROPOSED
 ALLOTMENT 405

PROPOSED
 ALLOTMENT 408

**VANTAGE
 STAGE 7**
 For
PEET

IMPORTANT NOTES:

(These notes are an integral part of this plan)
 This plan has been prepared for PEET for the purposes of a Disclosure Plan Under the Land Sales Act 1984.
 It is not to be used by any other person or corporation or for any other purposes and is subject to the following limitations:
 The allotment dimensions and area shown hereon are subject to final field survey and also to the requirements of Council and any other authority which may have requirements under any relevant legislation.
 Please refer to the approved Development Application for conditions relating to the allotments and to approved Conditions of Work drawings for services location and possible easements.
 The locations of retaining walls shown on this plan are indicative only, see detailed engineering drawings for the dimensions of any structures that may affect the lot.
 Final surface contours shown hereon have been drawn from ground level contours and proposed earthworks shown hereon have been drawn from survey by Hellstrom & Partners Pty Ltd.
 Where final surface contours are not shown, no change to existing surface level is proposed.

THESE DESIGNS AND DRAWINGS ARE COPYRIGHTED AND ARE NOT TO BE USED OR REPRODUCED WITHOUT THE WRITTEN PERMISSION OF THE DATA SOURCES

Cadastral boundaries	CS232\CI.Rnw
Final Surface Contours	Vantage Estate - Stage 7 FSL (m).12d4
Natural Surface Contours	157800_2.Dwg
Engineering Design	23520 CREF BASE.dwg

No.	Revisions	Date	Chkd
A	Original	18/10/12	EM

Parish: AUCKLAND
 County: CLINTON
 Locality: NEW AUCKLAND
 Local Authority: CLADSTONE REGIONAL
 Horizontal Meridian: MGA
 Vertical Level Datum: AHD
 Level Origin: PM95145
 Scale: 1:200 @ A3
 Surveyed: THG
 Drawn: EJM
 Checked: MMR
 Plot Date: 20 Oct. 2012
 Computer File Ref: 223007_1.Dps(A).dwg

DISCLOSURE PLAN
 of Proposed Allotment
 407
 situated on
 Lot 509 on SP251455



BRISBANE GOLD COAST
 (07) 3666 4700 (07) 5574 0588
 Email: mail@thg.com.au www.thg.com.au
 ABN 55 918 746 490 Helidon/Riverside Pty Ltd trading as THG
 Drawing No: C5232-DP 407 Issue: A



PROPOSED
ALLOTMENT 411

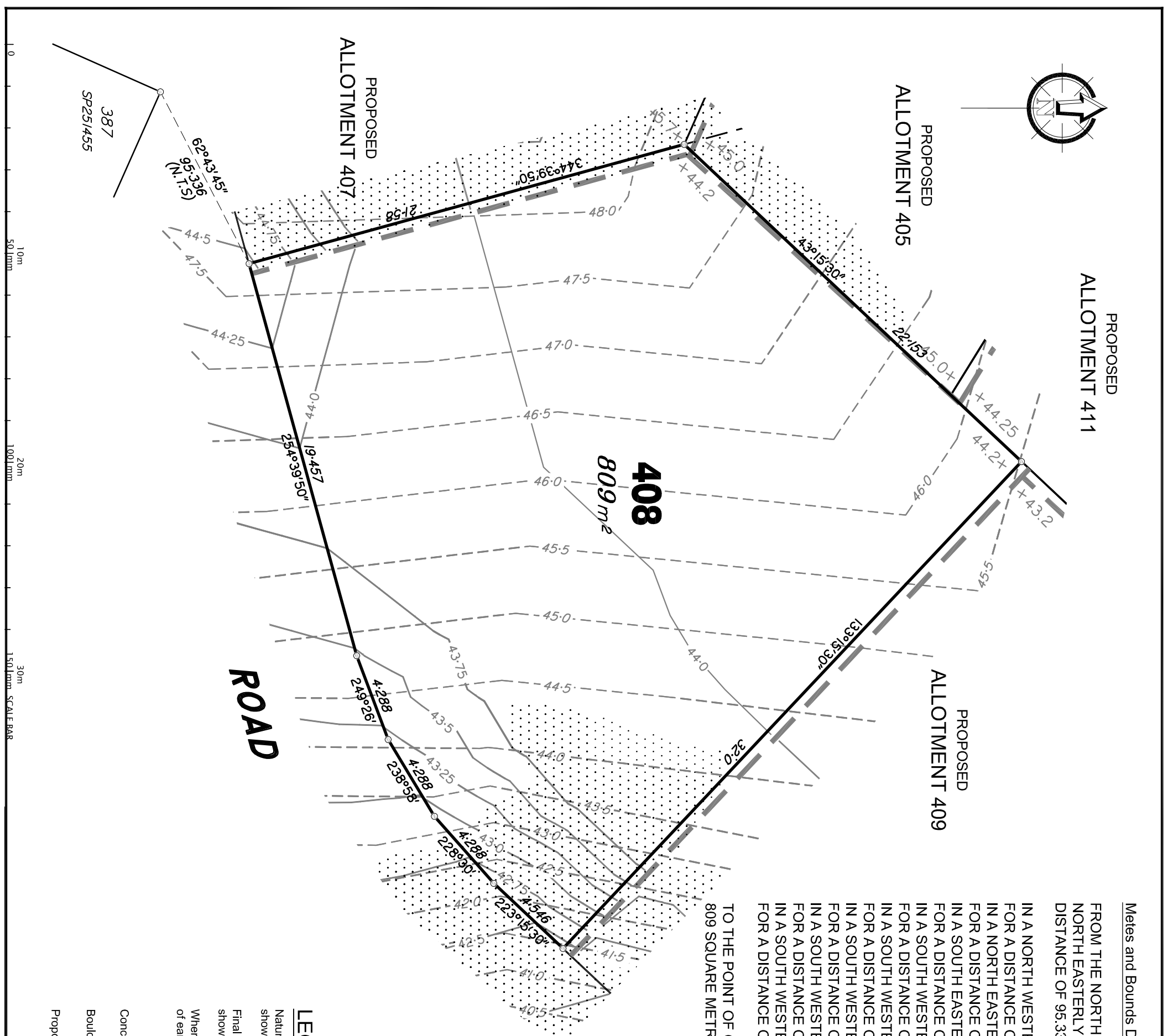
PROPOSED
ALLOTMENT 405

PROPOSED
ALLOTMENT 409

ROAD

408

809 m²



Mets and Bounds Description of Proposed Allotment 408

FROM THE NORTH WESTERN MOST CORNER OF LOT 387 ON SP251455 IN A NORTH EASTERLY DIRECTION AT A BEARING OF 62 DEGREES 43' 45" FOR A DISTANCE OF 95.336 METRES TO THE POINT OF COMMENCEMENT THENCE

IN A NORTH WESTERLY DIRECTION AT A BEARING OF 344 DEGREES 39'50" FOR A DISTANCE OF 21.58 METRES (MORE OR LESS), THENCE

IN A NORTH EASTERLY DIRECTION AT A BEARING OF 43 DEGREES 15'30" FOR A DISTANCE OF 22.153 METRES (MORE OR LESS), THENCE

IN A SOUTH EASTERLY DIRECTION AT A BEARING OF 133 DEGREES 15'30" FOR A DISTANCE OF 32 METRES (MORE OR LESS), THENCE

IN A SOUTH WESTERLY DIRECTION AT A BEARING OF 223 DEGREES 15'30" FOR A DISTANCE OF 4.546 METRES (MORE OR LESS), THENCE

IN A SOUTH WESTERLY DIRECTION AT A BEARING OF 228 DEGREES 30'00" FOR A DISTANCE OF 4.288 METRES (MORE OR LESS), THENCE

IN A SOUTH WESTERLY DIRECTION AT A BEARING OF 238 DEGREES 58'00" FOR A DISTANCE OF 4.288 METRES (MORE OR LESS), THENCE

IN A SOUTH WESTERLY DIRECTION AT A BEARING OF 249 DEGREES 26'00" FOR A DISTANCE OF 4.288 METRES (MORE OR LESS), THENCE

IN A SOUTH WESTERLY DIRECTION AT A BEARING OF 254 DEGREES 39'50" FOR A DISTANCE OF 19.457 METRES (MORE OR LESS),

TO THE POINT OF COMMENCEMENT AND CONTAINING AN AREA OF 809 SQUARE METRES (MORE OR LESS).

THERE ARE EARTHWORKS
PROPOSED FOR ALLOTMENT 408

LEGEND

Natural surface contours based on A.H.D. datum at an interval of 0.5m, shown as: --- / 0 ---

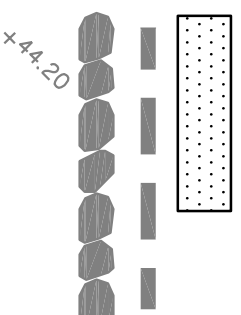
Final surface contours based on A.H.D. datum at an interval of 0.25m, shown as: --- 1.0 ---

Where applicable, areas to be filled from natural surface and proposed areas of earthworks fill on plans by Wood and Grieve Pty Ltd, are shown as:-

Concrete Sleeper Retaining Walls shown as:-

Boulder Retaining Walls shown as:-

Proposed surface level shown as:-



VANTAGE
STAGE 7
For
PEET

IMPORTANT NOTES:

These notes are an integral part of this plan.
This plan has been prepared for PEET for the purposes of a Disclosure Plan Under the Land Sales Act 1984.
It is not to be used by any other person or corporation or for any other purposes and is subject to the following limitations:
The allotment dimensions and area shown hereon are subject to final field survey and also to the requirements of Council and any other authority which may have requirements under any relevant legislation.
Please refer to the approved Development Application for conditions relating to the Allotments and to approved Conditions of Consent (COCs) drawings for services location and possible easements.
The locations of retaining walls shown on this plan are indicative only, see detailed engineering drawings for the dimensions of any structures that may affect the lot.
Final surface contours shown hereon have been drawn from final field survey and the proposed earthworks contours shown hereon have been drawn from survey by Hellstrom & Partners Pty Ltd.
Where final surface contours are not shown, no change to existing surface level is proposed.

THESE DESIGNS AND DRAWINGS ARE COPYRIGHT AND ARE NOT TO BE USED OR REPRODUCED WITHOUT THE WRITTEN PERMISSION OF THE DATA SOURCES

Data Sources
Cadastral Boundaries: C5232/CI Ref#
Final Surface Contours: Vantage Estate - Stage 7 P/L Un. 1/24A Natural Surface Contours 157800_2.D.dwg
Engineering Design: 23520 C REF BASE.dwg

No.	Revisions	Date	Chkd
A	Original	18/10/12	EM

Parish: AUCKLAND
County: CLINTON
Locality: NEW AUCKLAND
Local Authority: CLADSTONE REGIONAL MCA
Horizontal Meridian: AHD
Vertical Level Datum: PM95145
Level Origin: 1:200 @ A3
Scale: 1:200 @ A3
Surveyed: THG
Drawn: EJM
Checked: MMR
Plot Date: 20 Oct. 2012
Computer File Ref: 223007_1.Dps(A).dwg

DISCLOSURE PLAN
of Proposed Allotment
408
situated on
Lot 509 on SP251455



BRISBANE GOLD COAST
(07) 3666 4700 (07) 5574 0588
Email: mail@thg.com.au www.thg.com.au
ABN 55 918 746 490 Helidon/Farmer's Pty Ltd trading as THG

Drawing No: **C5232-DP 408** Issue: **A**