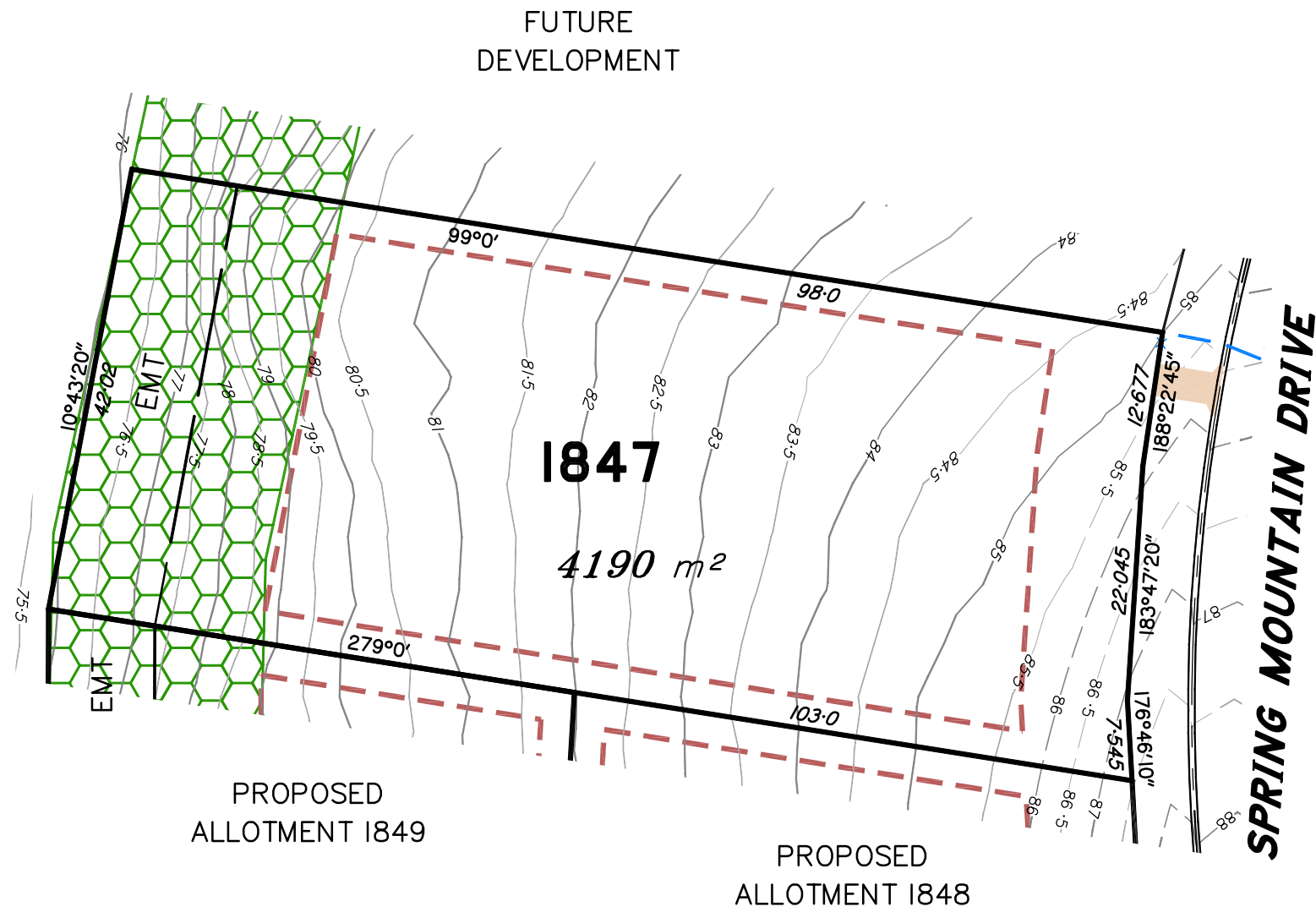


Preliminary **SITE PLAN**

FOR PROPOSED LOT 1847

SPRING MOUNTAIN STAGE 18A



LEGEND

- Final surface contours based on A.H.D datum at an interval of 1.0m, shown as: -24.0-
- Natural surface contours in undisturbed areas at an interval of 1.0m shown: -24.0-
- Easement for Services and or Access **EMT**
- Earthworks Batter Top
Toe
- Kerb/Kerb & Channel
- Drainage Line
- Drainage Pit
- Drainage Gully Pit
- Drainage MH
- Drainage Pit & Soakage Trench
- Water Line
- Water Conduit
- Water Service Point of Entry
- Water Stop Valve
- Fire Hydrant
- Underground Comms
- Comms Pit
- Underground Electricity
- Elec Box/Pit
- Street Light
- Indicative Driveway location
- Building Envelope in accordance with Approved Building Envelope Plan 7081 P06 BE A 14/10/2015 by Saunders Havill Group
- Q100 Flood Area

INFORMATION NOT AVAILABLE AT THIS TIME

IMPORTANT NOTES:

This plan has been prepared for PEET Pty Ltd for the purposes of Discussion only. All areas and dimensions are subject to final survey and relevant authority approval. Location of sewer, roofwater, stormwater, water reticulation, electricity and communication lines, manholes and pits, streetscaping, banks, batters, retaining walls, fencing, footpaths & building envelopes are as shown on engineering design drawings, supplied by KN Group Pty Ltd Consulting Engineers and may differ from the as constructed location. Levels and Contours shown are not to be used for building design or construction. A site survey is required. For final building requirements the relevant approved Plan of Development prevail over this site plan. These notes form an integral part of this plan and no part of this plan may be reproduced in whole or in part without these notes.

AMENDMENTS

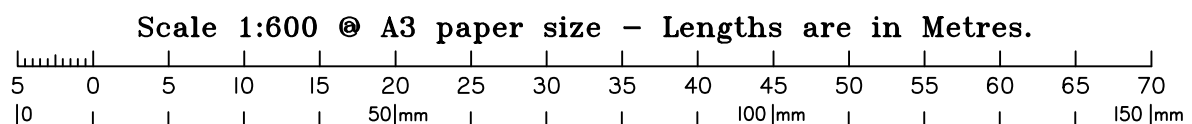
DESCRIPTION	DATE
A	Emts added to Lots 1847 & 1849
	21.4.2020

State Protected Vegetation:

Areas B2 & B4 shown on Technical Agency Response (Vegetation) Plan (TARP) 1902-9640-SPD dated 27/3/2019. No built structure, other than fences, roads and underground services are to be established within these areas.

SCHLENCKER SURVEYING (QLD)
Gold Coast ♦ Brisbane ♦ Rockhampton
Consultants in Surveying, Mapping & Development

A.B.N. 36 909 833 411
PO Box 41, Helensvale QLD 4212.
Suite 206,
Helensvale Professional Centre
3 Sir John Overall Dr., Helensvale QLD 4212.
Ph: (07) 5573 6744
Fax: (07) 5573 6755
Mob: 0413 945 959
EMAIL: mail@ssq.net.au



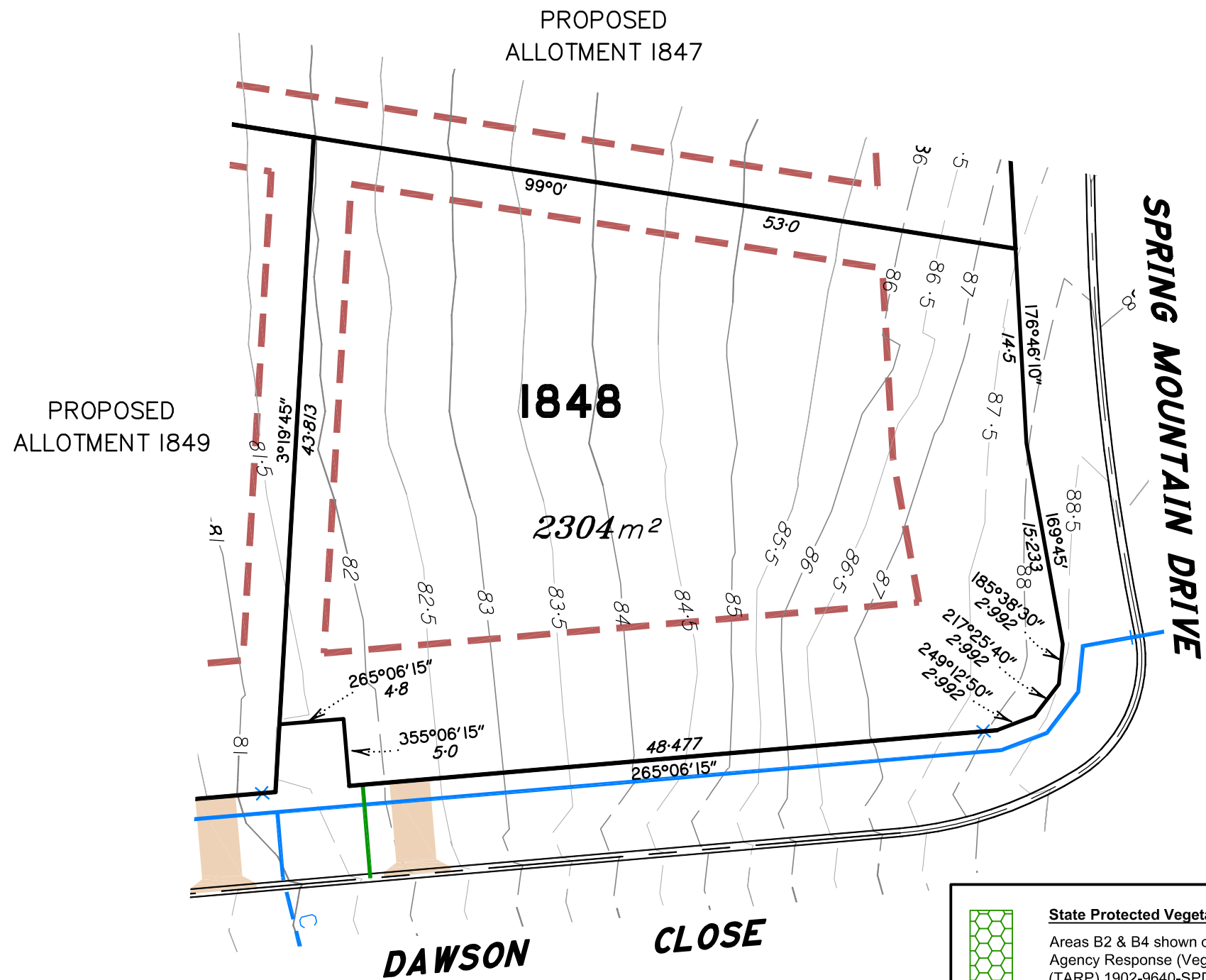
This plan is **NOT** a Disclosure Plan as set out in the Land Sales Act 1984 and is for General Information Only.

SCALE @ A3 **1:600** DWG. NO. **15159-76A-1847**

Preliminary **SITE PLAN**

FOR PROPOSED LOT 1848

SPRING MOUNTAIN STAGE 18A



State Protected Vegetation:

Areas B2 & B4 shown on Technical Agency Response (Vegetation) Plan (TARP) 1902-9640-SPD dated 27/3/2019. No built structure, other than fences, roads and underground services are to be established within these areas.

LEGEND

- Final surface contours based on A.H.D datum at an interval of 1.0m, shown as: -24.0-
- Natural surface contours in undisturbed areas at an interval of 1.0m shown: -24.0-
- Easement for Services and or Access EMT
- Earthworks Batter Top Toe
- Kerb/Kerb & Channel
- Drainage Line
- Drainage Pit
- Drainage Gully Pit
- Drainage MH
- Drainage Pit & Soakage Trench
- Water Line
- Water Conduit
- Water Service Point of Entry
- Water Stop Valve
- Fire Hydrant
- Underground Comms
- Comms Pit
- Underground Electricity
- Elec Box/Pit
- Street Light
- Indicative Driveway location
- Building Envelope in accordance with Approved Building Envelope Plan 7081 P06 BE A 14/10/2015 by Saunders Havill Group
- Q100 Flood Area

IMPORTANT NOTES:

This plan has been prepared for PEET Pty Ltd for the purposes of Discussion only. All areas and dimensions are subject to final survey and relevant authority approval. Location of sewer, roofwater, stormwater, water reticulation, electricity and communication lines, manholes and pits, streetscaping, banks, batters, retaining walls, fencing, footpaths & building envelopes are as shown on engineering design drawings, supplied by KN Group Pty Ltd Consulting Engineers and may differ from the as constructed location. Levels and Contours shown are not to be used for building design or construction. A site survey is required. For final building requirements the relevant approved Plan of Development prevail over this site plan. These notes form an integral part of this plan and no part of this plan may be reproduced in whole or in part without these notes.

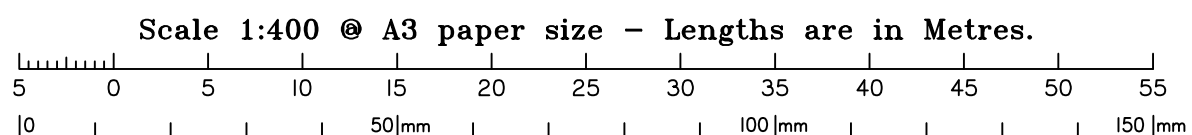
AMENDMENTS

DESCRIPTION	DATE

SCHLENCKER SURVEYING (QLD)
Gold Coast ♦ Brisbane ♦ Rockhampton
Consultants in Surveying, Mapping & Development

A.B.N. 36 909 833 411
PO Box 41, Helensvale QLD 4212.
Suite 206,
Helensvale Professional Centre
3 Sir John Overall Dr., Helensvale QLD 4212.
Ph: (07) 5573 6744
Fax: (07) 5573 6755
Mob: 0413 945 959
EMAIL: mail@ssq.net.au

SCALE @ A3 **1:400** DWG. NO. **15159-76-1848**



This plan is **NOT** a Disclosure Plan as set out in the Land Sales Act 1984 and is for General Information Only.

Preliminary **SITE PLAN**

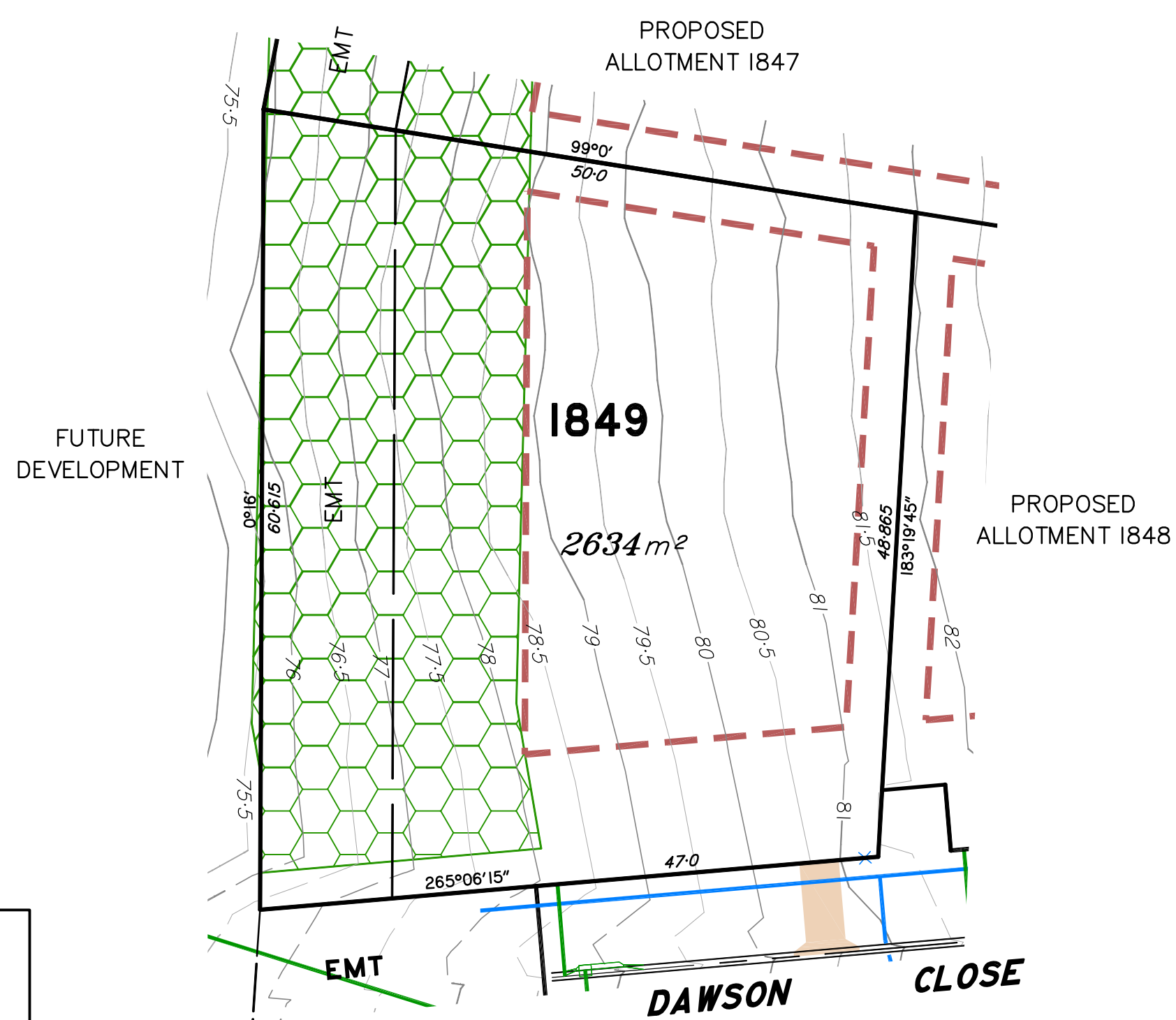
FOR PROPOSED LOT 1849

SPRING MOUNTAIN STAGE 18A

LEGEND

- Final surface contours based on A.H.D datum at an interval of 1.0m, shown as: -24.0-
- Natural surface contours in undisturbed areas at an interval of 1.0m shown: -24.0-
- Easement for Services and or Access **EMT**
- Earthworks Batter
- Kerb/Kerb & Channel
- Drainage Line
- Drainage Pit
- Drainage Gully Pit
- Drainage MH
- Drainage Pit & Soakage Trench
- Water Line
- Water Conduit
- Water Service Point of Entry
- Water Stop Valve
- Fire Hydrant
- Underground Comms
- Comms Pit
- Underground Electricity
- Elec Box/Pit
- Street Light
- Indicative Driveway location
- Building Envelope in accordance with Approved Building Envelope Plan 7081 P06 BE A 14/10/2015 by Saunders Havill Group
- Q100 Flood Area

INFORMATION NOT AVAILABLE AT THIS TIME



FUTURE DEVELOPMENT

State Protected Vegetation:
 Areas B2 & B4 shown on Technical Agency Response (Vegetation) Plan (TARP) 1902-9640-SPD dated 27/3/2019. No built structure, other than fences, roads and underground services are to be established within these areas.

IMPORTANT NOTES:

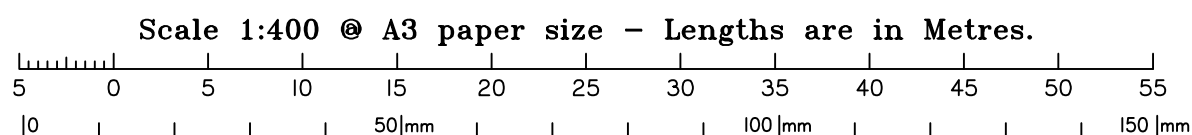
This plan has been prepared for PEET Pty Ltd for the purposes of Discussion only. All areas and dimensions are subject to final survey and relevant authority approval. Location of sewer, roofwater, stormwater, water reticulation, electricity and communication lines, manholes and pits, streetscaping, banks, batters, retaining walls, fencing, footpaths & building envelopes are as shown on engineering design drawings, supplied by KN Group Pty Ltd Consulting Engineers and may differ from the as constructed location. Levels and Contours shown are not to be used for building design or construction. A site survey is required. For final building requirements the relevant approved Plan of Development prevail over this site plan. These notes form an integral part of this plan and no part of this plan may be reproduced in whole or in part without these notes.

AMENDMENTS

DESCRIPTION	DATE
A Emts added to Lots 1847 & 1849	21.4.2020

SCHLENCKER SURVEYING (QLD)
 Gold Coast ♦ Brisbane ♦ Rockhampton
 Consultants in Surveying, Mapping & Development

A.B.N. 36 909 833 411
 PO Box 41, Helensvale QLD 4212.
 Suite 206,
 Helensvale Professional Centre
 3 Sir John Overall Dr., Helensvale QLD 4212.
 Ph: (07) 5573 6744
 Fax: (07) 5573 6755
 Mob: 0413 945 959
 EMAIL: mail@ssq.net.au



This plan is **NOT** a Disclosure Plan as set out in the Land Sales Act 1984 and is for General Information Only.

SCALE @ A3 **1:400** DWG. NO. **15159-76A-1849**

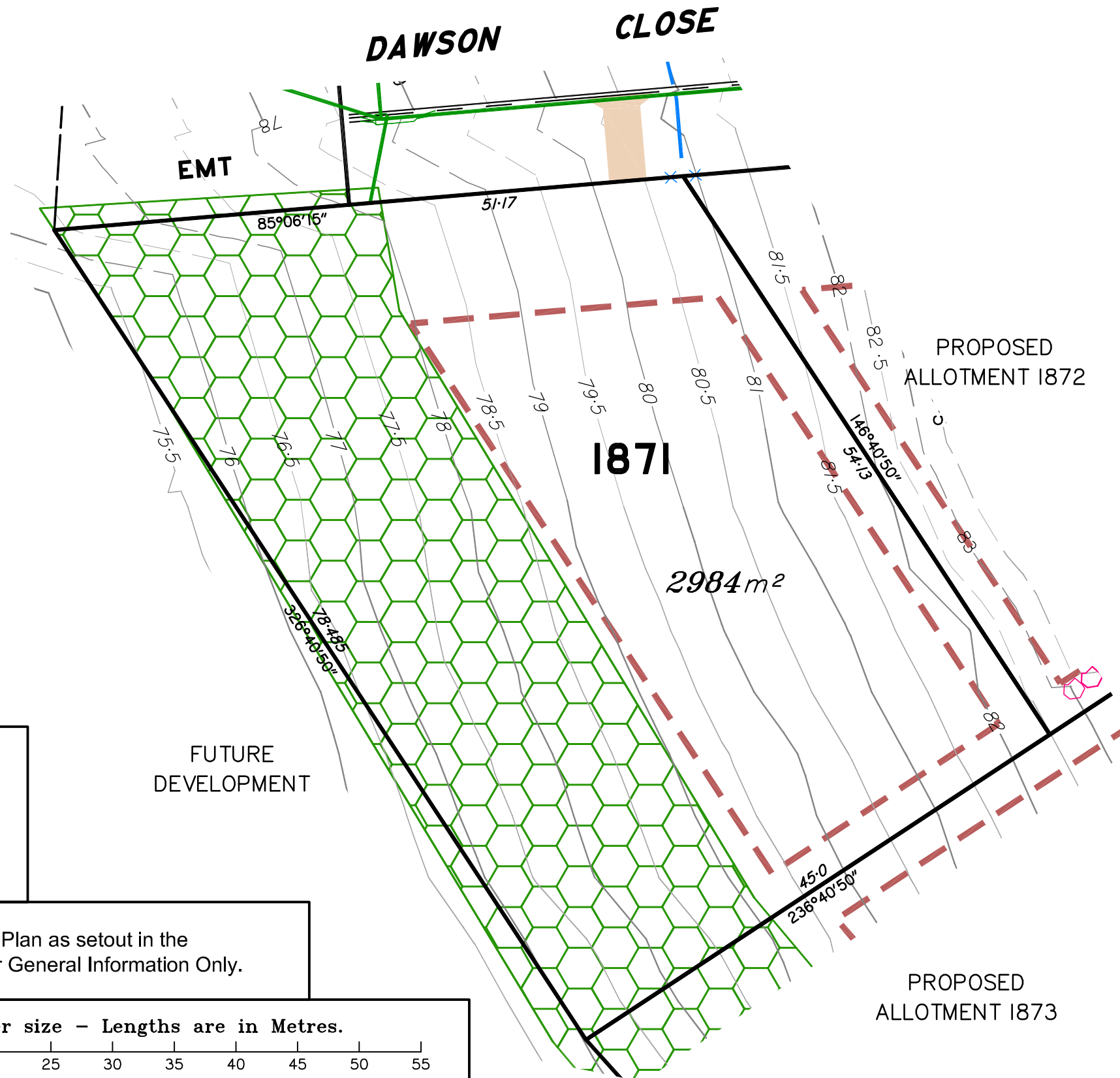
Preliminary

SITE PLAN

FOR PROPOSED LOT 1871
 SPRING MOUNTAIN
 STAGE 18A

LEGEND

- Final surface contours based on A.H.D datum at an interval of 1.0m, shown as: -24.0-
- Natural surface contours in undisturbed areas at an interval of 1.0m shown: -24.0-
- Easement for Services and or Access **EMT**
- Earthworks Batter
- Kerb/Kerb & Channel
- Drainage Line
- Drainage Pit
- Drainage Gully Pit
- Drainage MH
- Drainage Pit & Soakage Trench
- Water Line
- Water Conduit
- Water Service Point of Entry
- Water Stop Valve
- Fire Hydrant
- Underground Comms
- Comms Pit
- Underground Electricity
- Elec Box/Pit
- Street Light
- Indicative Driveway location
- Building Envelope in accordance with Approved Building Envelope Plan 7081 P06 BE A 14/10/2015 by Saunders Havill Group
- Q100 Flood Area



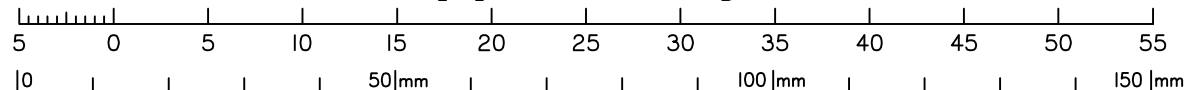
State Protected Vegetation:

Areas B2 & B4 shown on Technical Agency Response (Vegetation) Plan (TARP) 1902-9640-SPD dated 27/3/2019. No built structure, other than fences, roads and underground services are to be established within these areas.

FUTURE DEVELOPMENT

This plan in **NOT** a Disclosure Plan as setout in the Land Sales Act 1984 and is for General Information Only.

Scale 1:400 @ A3 paper size - Lengths are in Metres.



IMPORTANT NOTES:

This plan has been prepared for PEET Pty Ltd for the purposes of Discussion only. All areas and dimensions are subject to final survey and relevant authority approval. Location of sewer, roofwater, stormwater, water reticulation, electricity and communication lines, manholes and pits, streetscaping, banks, batters, retaining walls, fencing, footpaths & building envelopes are as shown on engineering design drawings, supplied by KN Group Pty Ltd Consulting Engineers and may differ from the as constructed location. Levels and Contours shown are not to be used for building design or construction. A site survey is required. For final building requirements the relevant approved Plan of Development prevail over this site plan. These notes form an integral part of this plan and no part of this plan may be reproduced in whole or in part without these notes.

AMENDMENTS

DESCRIPTION	DATE

SCHLENCKER SURVEYING (QLD)

Gold Coast ♦ Brisbane ♦ Rockhampton
 Consultants in Surveying,
 Mapping & Development



A.B.N. 36 909 833 411
 PO Box 41, Helensvale QLD 4212.

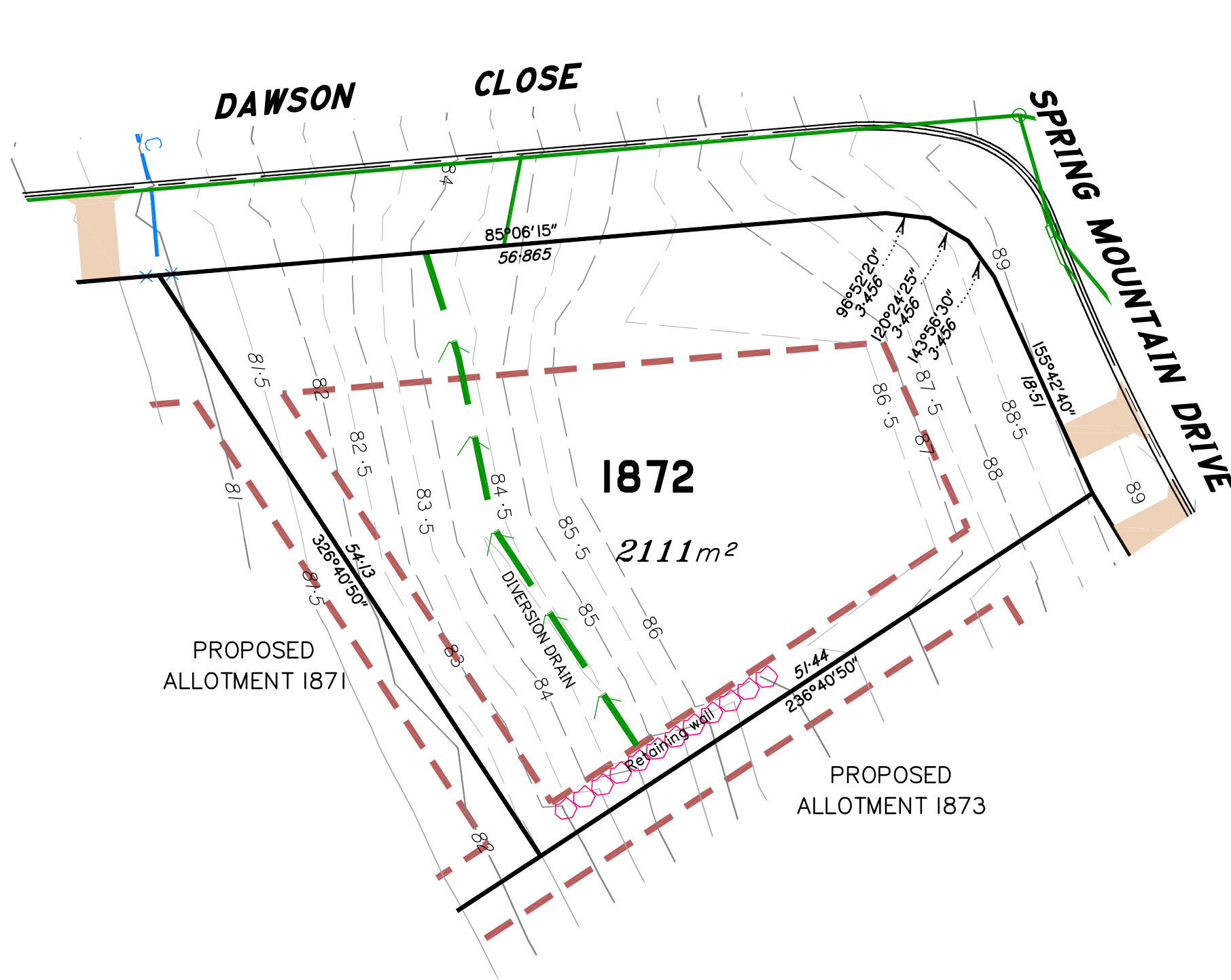
Suite 206,
 Helensvale Professional Centre
 3 Sir John Overall Dr., Helensvale QLD 4212.

Ph.: (07) 5573 6744
 Fax: (07) 5573 6755
 Mob.: 0413 945 959
 EMAIL: mail@ssq.net.au

SCALE @ A3 **1:400**

DWG. NO. **15159-76-1871**

Preliminary **SITE PLAN**
 FOR PROPOSED LOT 1872
SPRING MOUNTAIN STAGE 18A



LEGEND

- Final surface contours based on A.H.D datum at an interval of 1.0m, shown as: -24.0-
- Natural surface contours in undisturbed areas at an interval of 1.0m shown: -24.0-
- Easement for Services and or Access EMT
- Earthworks Batter Top
Toe
- Kerb/Kerb & Channel
- Drainage Line
- Drainage Pit
- Drainage Gully Pit
- Drainage MH
- Drainage Pit & Soakage Trench
- Water Line
- Water Conduit
- Water Service Point of Entry
- Water Stop Valve
- Fire Hydrant
- Underground Comms
- Comms Pit
- Underground Electricity
- Elec Box/Pit
- Street Light
- Indicative Driveway location
- Building Envelope in accordance with Approved Building Envelope Plan 7081 P06 BE A 14/10/2015 by Saunders Havill Group
- Q100 Flood Area

INFORMATION NOT AVAILABLE AT THIS TIME

IMPORTANT NOTES:

This plan has been prepared for PEET Pty Ltd for the purposes of Discussion only.
 All areas and dimensions are subject to final survey and relevant authority approval.
 Location of sewer, roofwater, stormwater, water reticulation, electricity and communication lines, manholes and pits, streetscaping, banks, batters, retaining walls, fencing, footpaths & building envelopes are as shown on engineering design drawings, supplied by KN Group Pty Ltd Consulting Engineers and may differ from the as constructed location. Levels and Contours shown are not to be used for building design or construction. A site survey is required.
 For final building requirements the relevant approved Plan of Development prevail over this site plan.
 These notes form an integral part of this plan and no part of this plan may be reproduced in whole or in part without these notes.

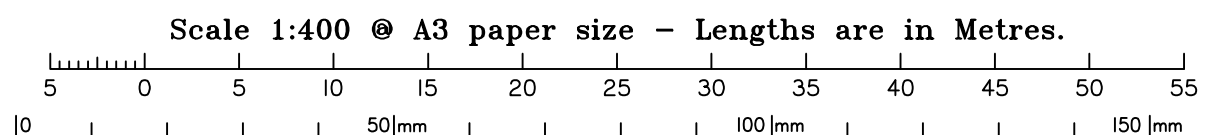
AMENDMENTS

DESCRIPTION	DATE

SCHLENCKER SURVEYING (QLD)
 Gold Coast ♦ Brisbane ♦ Rockhampton
 Consultants in Surveying, Mapping & Development

A.B.N. 36 909 833 411
 PO Box 41, Helensvale QLD 4212.
 Suite 206,
 Helensvale Professional Centre
 3 Sir John Overall Dr., Helensvale QLD 4212.
 Ph: (07) 5573 6744
 Fax: (07) 5573 6755
 Mob: 0413 945 959
 EMAIL: mail@ssq.net.au

SCALE @ A3 **1:400** DWG. NO. **15159-76-1872**

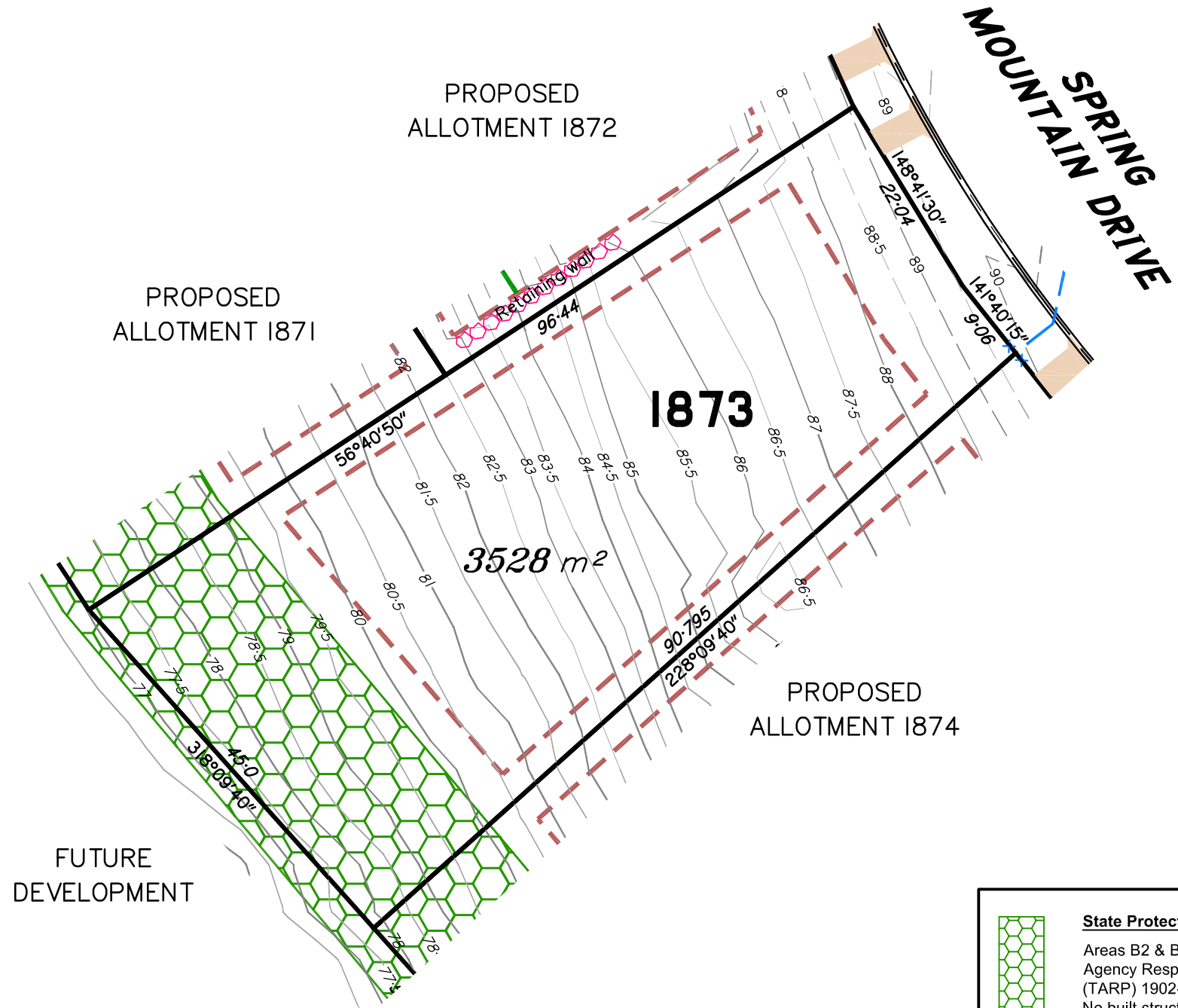


This plan is **NOT** a Disclosure Plan as set out in the Land Sales Act 1984 and is for General Information Only.

Preliminary **SITE PLAN**

FOR PROPOSED LOT 1873

SPRING MOUNTAIN STAGE 18A



LEGEND

- Final surface contours based on A.H.D datum at an interval of 1.0m, shown as: -24.0-
- Natural surface contours in undisturbed areas at an interval of 1.0m shown: -24.0-
- Easement for Services and or Access EMT
- Earthworks Batter
- Kerb/Kerb & Channel
- Drainage Line
- Drainage Pit
- Drainage Gully Pit
- Drainage MH
- Drainage Pit & Soakage Trench
- Water Line
- Water Conduit
- Water Service Point of Entry
- Water Stop Valve
- Fire Hydrant
- Underground Comms
- Comms Pit
- Underground Electricity
- Elec Box/Pit
- Street Light
- Indicative Driveway location
- Building Envelope in accordance with Approved Building Envelope Plan 7081 P06 BE A 14/10/2015 by Saunders Havill Group
- Q100 Flood Area



IMPORTANT NOTES:

This plan has been prepared for PEET Pty Ltd for the purposes of Discussion only. All areas and dimensions are subject to final survey and relevant authority approval. Location of sewer, roofwater, stormwater, water reticulation, electricity and communication lines, manholes and pits, streetscaping, banks, batters, retaining walls, fencing, footpaths & building envelopes are as shown on engineering design drawings, supplied by KN Group Pty Ltd Consulting Engineers and may differ from the as constructed location. Levels and Contours shown are not to be used for building design or construction. A site survey is required. For final building requirements the relevant approved Plan of Development prevail over this site plan. These notes form an integral part of this plan and no part of this plan may be reproduced in whole or in part without these notes.

AMENDMENTS

DESCRIPTION	DATE

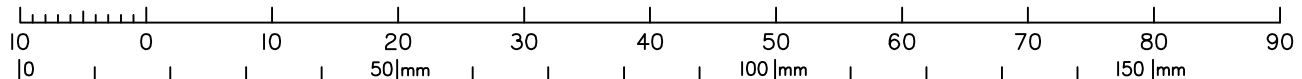
State Protected Vegetation:

Areas B2 & B4 shown on Technical Agency Response (Vegetation) Plan (TARP) 1902-9640-SPD dated 27/3/2019. No built structure, other than fences, roads and underground services are to be established within these areas.

SCHLENCKER SURVEYING (QLD)
Gold Coast ♦ Brisbane ♦ Rockhampton
Consultants in Surveying, Mapping & Development

A.B.N. 36 909 833 411
PO Box 41, Helensvale QLD 4212.
Suite 206,
Helensvale Professional Centre
3 Sir John Overall Dr., Helensvale QLD 4212.
Ph: (07) 5573 6744
Fax: (07) 5573 6755
Mob: 0413 945 959
EMAIL: mail@ssq.net.au

Scale 1:600 @ A3 paper size – Lengths are in Metres.



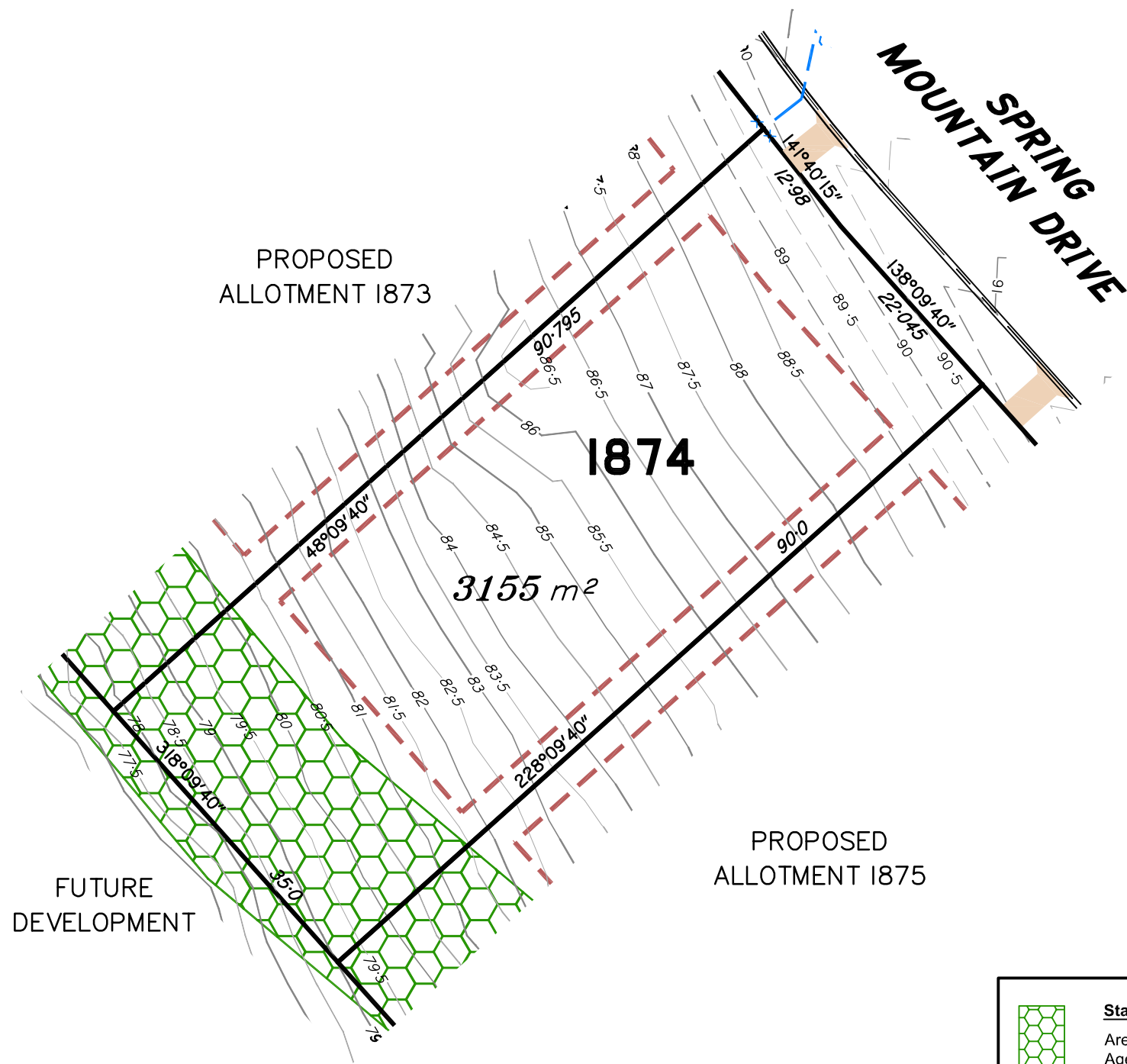
This plan is **NOT** a Disclosure Plan as setout in the Land Sales Act 1984 and is for General Information Only.

SCALE @ A3 **1:600** DWG. NO. **15159-76-1873**

Preliminary **SITE PLAN**

FOR PROPOSED LOT 1874

SPRING MOUNTAIN STAGE 18A



LEGEND

- Final surface contours based on A.H.D datum at an interval of 1.0m, shown as: --24.0--
- Natural surface contours in undisturbed areas at an interval of 1.0m shown: —24.0—
- Easement for Services and or Access EMT
- Earthworks Batter Top
Toe
- Kerb/Kerb & Channel
- Drainage Line
- Drainage Pit
- Drainage Gully Pit
- Drainage MH
- Drainage Pit & Soakage Trench
- Water Line
- Water Conduit
- Water Service Point of Entry
- Water Stop Valve
- Fire Hydrant
- Underground Comms
- Comms Pit
- Underground Electricity
- Elec Box/Pit
- Street Light
- Indicative Driveway location
- Building Envelope in accordance with Approved Building Envelope Plan 7081 P06 BE A 14/10/2015 by Saunders Havill Group
- Q100 Flood Area

INFORMATION NOT AVAILABLE AT THIS TIME

IMPORTANT NOTES:

This plan has been prepared for PEET Pty Ltd for the purposes of Discussion only. All areas and dimensions are subject to final survey and relevant authority approval. Location of sewer, roofwater, stormwater, water reticulation, electricity and communication lines, manholes and pits, streetscaping, banks, batters, retaining walls, fencing, footpaths & building envelopes are as shown on engineering design drawings, supplied by KN Group Pty Ltd Consulting Engineers and may differ from the as constructed location. Levels and Contours shown are not to be used for building design or construction. A site survey is required. For final building requirements the relevant approved Plan of Development prevail over this site plan. These notes form an integral part of this plan and no part of this plan may be reproduced in whole or in part without these notes.

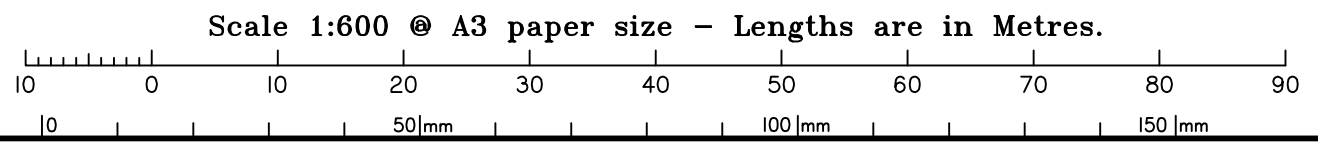
AMENDMENTS

DESCRIPTION	DATE

State Protected Vegetation:
Areas B2 & B4 shown on Technical Agency Response (Vegetation) Plan (TARP) 1902-9640-SPD dated 27/3/2019. No built structure, other than fences, roads and underground services are to be established within these areas.

SCHLENCKER SURVEYING (QLD)
Gold Coast ♦ Brisbane ♦ Rockhampton
Consultants in Surveying, Mapping & Development

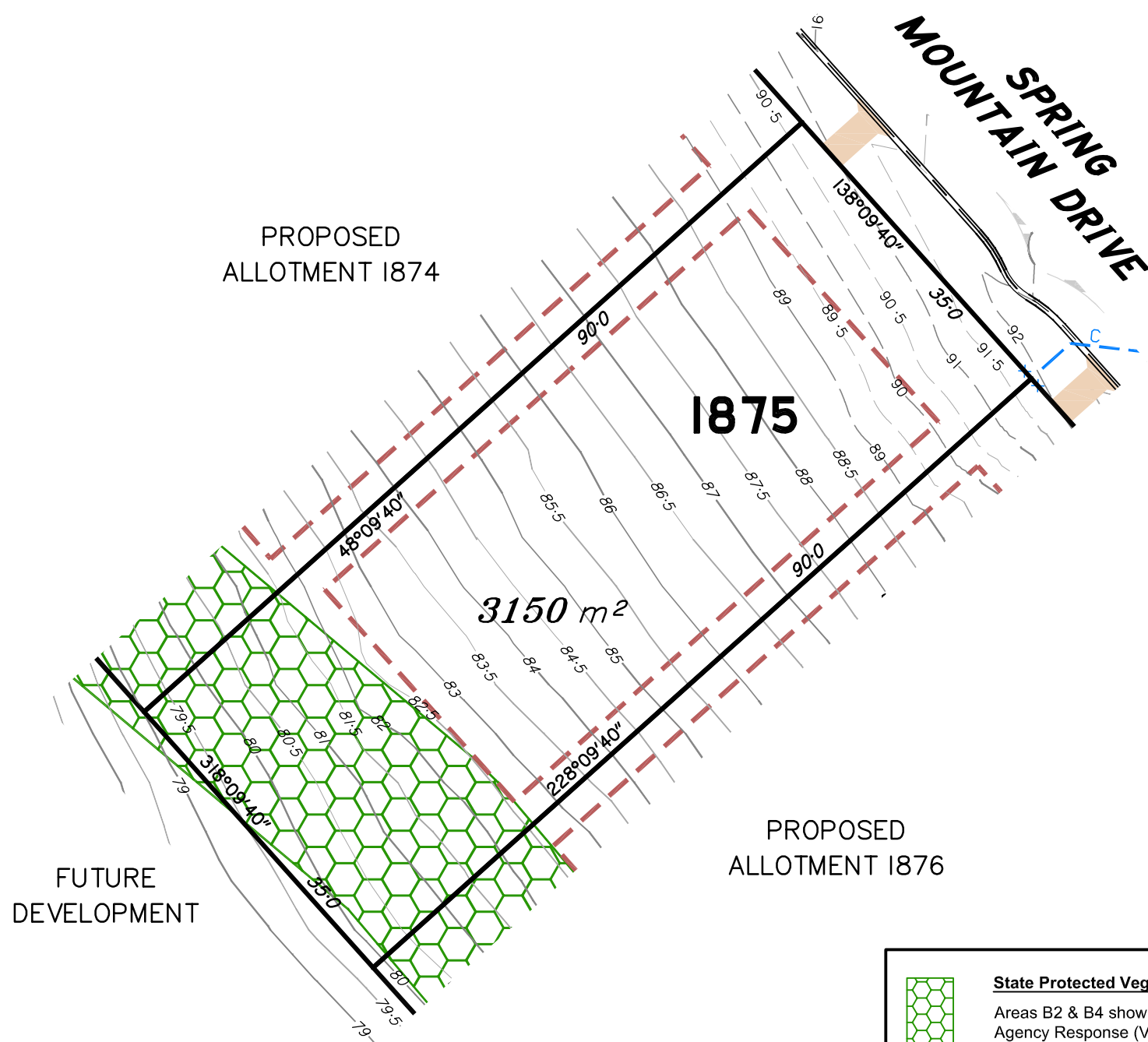
A.B.N. 36 909 833 411
PO Box 41, Helensvale QLD 4212.
Suite 206,
Helensvale Professional Centre
3 Sir John Overall Dr., Helensvale QLD 4212.
Ph: (07) 5573 6744
Fax: (07) 5573 6755
Mob: 0413 945 959
EMAIL: mail@ssq.net.au



This plan in **NOT** a Disclosure Plan as setout in the Land Sales Act 1984 and is for General Information Only.

SCALE @ A3 **1:600** DWG. NO. **15159-76-1874**

Preliminary **SITE PLAN**
 FOR PROPOSED LOT 1875
 SPRING MOUNTAIN
 STAGE 18A



State Protected Vegetation:
 Areas B2 & B4 shown on Technical Agency Response (Vegetation) Plan (TARP) 1902-9640-SPD dated 27/3/2019. No built structure, other than fences, roads and underground services are to be established within these areas.

LEGEND

- Final surface contours based on A.H.D datum at an interval of 1.0m, shown as: -24.0-
- Natural surface contours in undisturbed areas at an interval of 1.0m shown: -24.0-
- Easement for Services and or Access EMT
- Earthworks Batter Top Toe
- Kerb/Kerb & Channel
- Drainage Line
- Drainage Pit
- Drainage Gully Pit
- Drainage MH
- Drainage Pit & Soakage Trench
- Water Line
- Water Conduit
- Water Service Point of Entry
- Water Stop Valve
- Fire Hydrant
- Underground Comms
- Comms Pit
- Underground Electricity
- Elec Box/Pit
- Street Light
- Indicative Driveway location
- Building Envelope in accordance with Approved Building Envelope Plan 7081 P06 BE A 14/10/2015 by Saunders Havill Group
- Q100 Flood Area

INFORMATION NOT AVAILABLE AT THIS TIME

IMPORTANT NOTES:

This plan has been prepared for PEET Pty Ltd for the purposes of Discussion only.
 All areas and dimensions are subject to final survey and relevant authority approval.
 Location of sewer, roofwater, stormwater, water reticulation, electricity and communication lines, manholes and pits, streetscaping, banks, batters, retaining walls, fencing, footpaths & building envelopes are as shown on engineering design drawings, supplied by KN Group Pty Ltd Consulting Engineers and may differ from the as constructed location. Levels and Contours shown are not to be used for building design or construction. A site survey is required.
 For final building requirements the relevant approved Plan of Development prevail over this site plan.
 These notes form an integral part of this plan and no part of this plan may be reproduced in whole or in part without these notes.

AMENDMENTS

DESCRIPTION	DATE

SCHLENCKER SURVEYING (QLD)
 Gold Coast ♦ Brisbane ♦ Rockhampton
 Consultants in Surveying,
 Mapping & Development



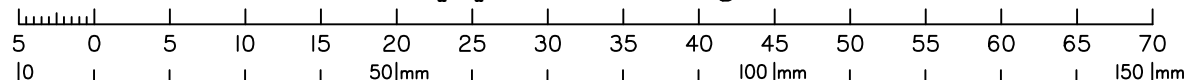
A.B.N. 36 909 833 411
 PO Box 41, Helensvale QLD 4212.

Suite 206,
 Helensvale Professional Centre
 3 Sir John Overall Dr., Helensvale QLD 4212.

Ph.: (07) 5573 6744
 Fax: (07) 5573 6755
 Mob.: 0413 945 959
 EMAIL: mail@ssq.net.au

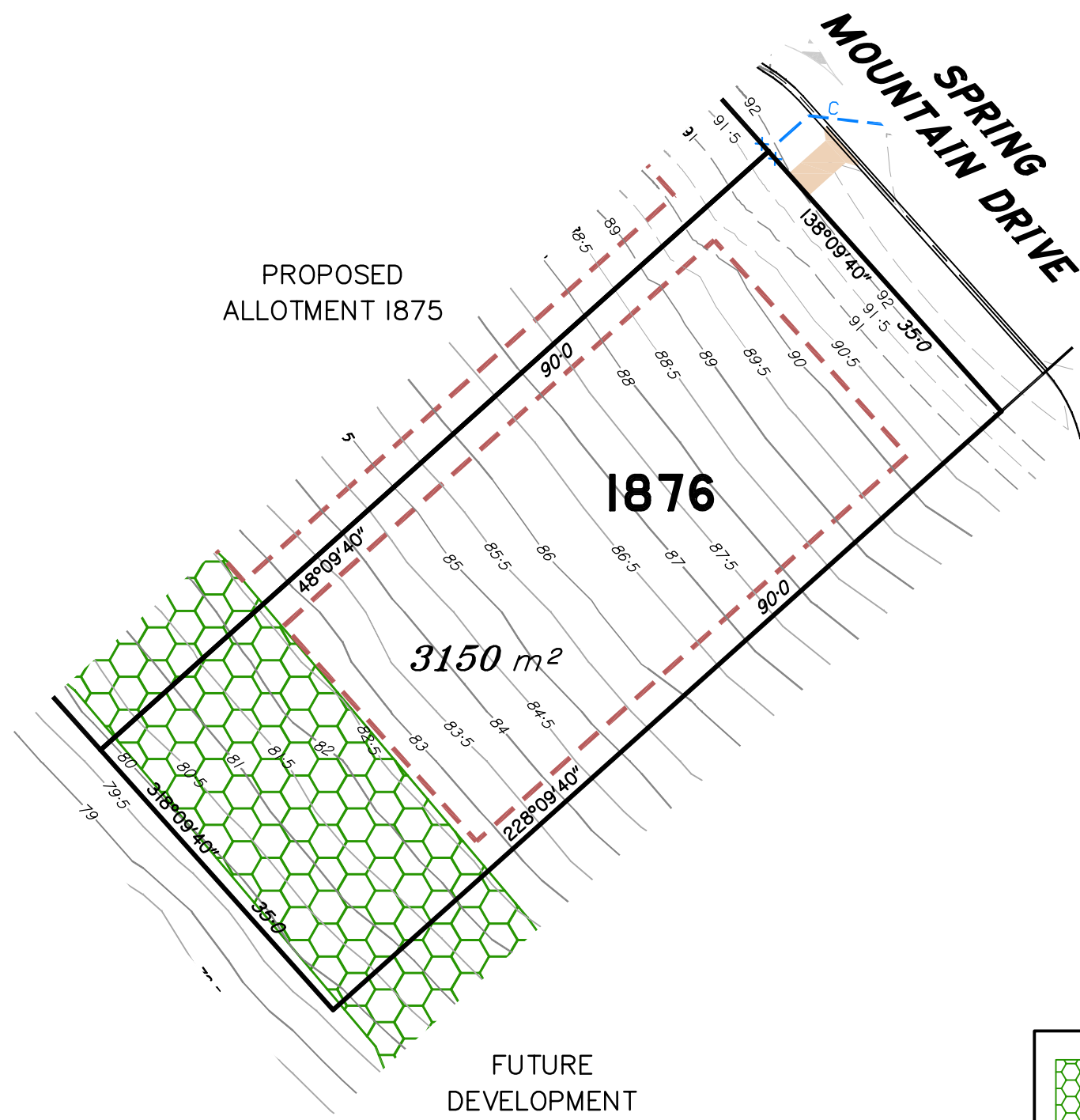
SCALE @ A3 **1:600** DWG. NO. **15159-76-1875**

Scale 1:600 @ A3 paper size – Lengths are in Metres.



This plan is **NOT** a Disclosure Plan as set out in the Land Sales Act 1984 and is for General Information Only.

Preliminary **SITE PLAN**
 FOR PROPOSED LOT 1876
SPRING MOUNTAIN STAGE 18A



LEGEND

- Final surface contours based on A.H.D datum at an interval of 1.0m, shown as: -24.0-
- Natural surface contours in undisturbed areas at an interval of 1.0m shown: -24.0-
- Easement for Services and or Access **EMT**
- Earthworks Batter
- Kerb/Kerb & Channel
- Drainage Line
- Drainage Pit
- Drainage Gully Pit
- Drainage MH
- Drainage Pit & Soakage Trench
- Water Line
- Water Conduit
- Water Service Point of Entry
- Water Stop Valve
- Fire Hydrant
- Underground Comms
- Comms Pit
- Underground Electricity
- Elec Box/Pit
- Street Light
- Indicative Driveway location
- Building Envelope in accordance with Approved Building Envelope Plan 7081 P06 BE A 14/10/2015 by Saunders Havill Group
- Q100 Flood Area

INFORMATION NOT AVAILABLE AT THIS TIME

IMPORTANT NOTES:

This plan has been prepared for PEET Pty Ltd for the purposes of Discussion only. All areas and dimensions are subject to final survey and relevant authority approval. Location of sewer, roofwater, stormwater, water reticulation, electricity and communication lines, manholes and pits, streetscaping, banks, batters, retaining walls, fencing, footpaths & building envelopes are as shown on engineering design drawings, supplied by KN Group Pty Ltd Consulting Engineers and may differ from the as constructed location. Levels and Contours shown are not to be used for building design or construction. A site survey is required. For final building requirements the relevant approved Plan of Development prevail over this site plan. These notes form an integral part of this plan and no part of this plan may be reproduced in whole or in part without these notes.

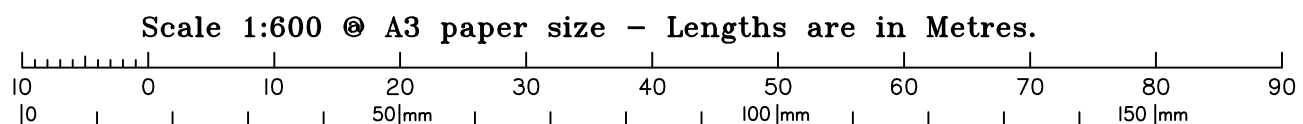
AMENDMENTS

DESCRIPTION	DATE

State Protected Vegetation:
 Areas B2 & B4 shown on Technical Agency Response (Vegetation) Plan (TARP) 1902-9640-SPD dated 27/3/2019. No built structure, other than fences, roads and underground services are to be established within these areas.

SCHLENCKER SURVEYING (QLD)
 Gold Coast ♦ Brisbane ♦ Rockhampton
 Consultants in Surveying, Mapping & Development

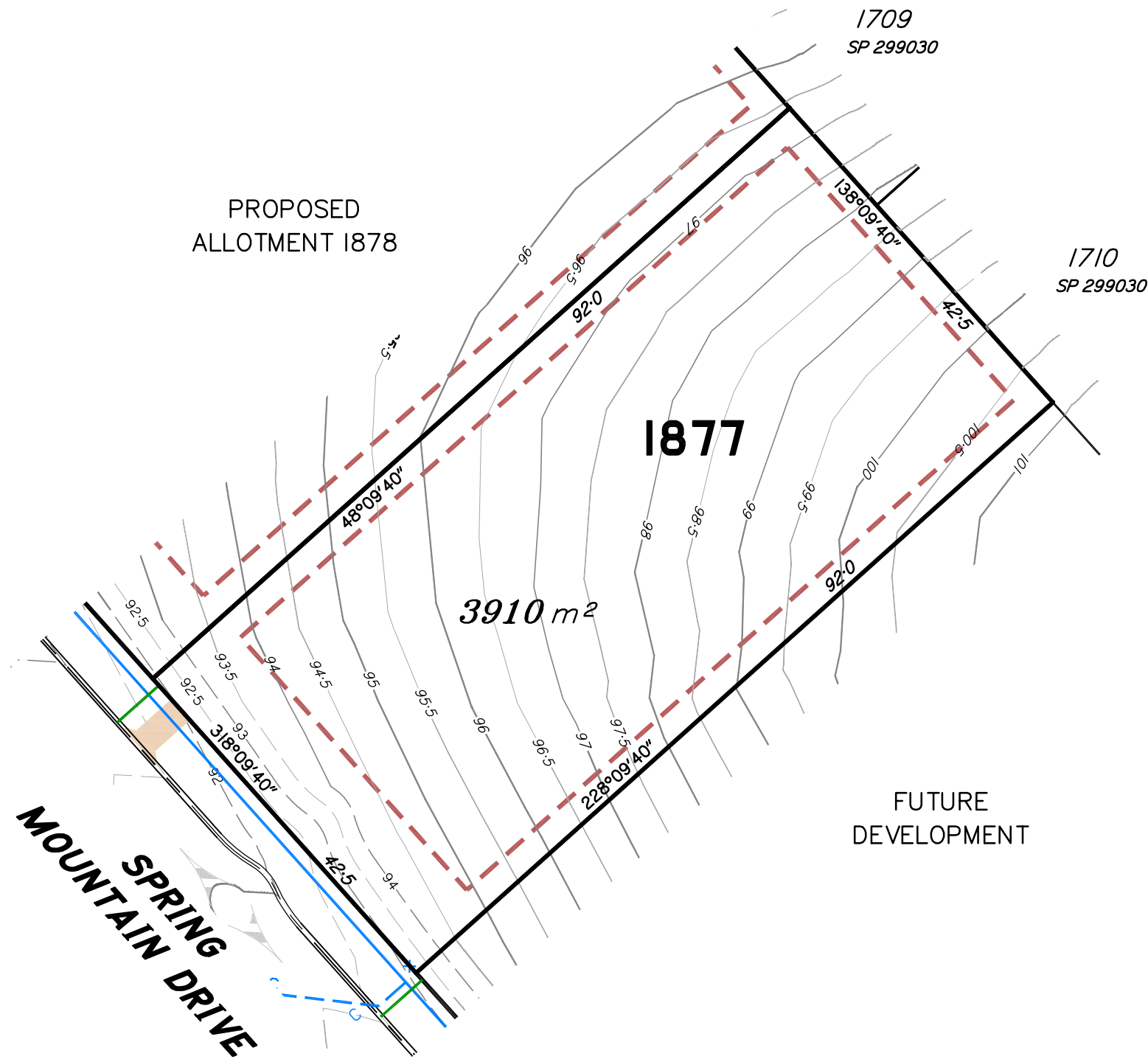
A.B.N. 36 909 833 411
 PO Box 41, Helensvale QLD 4212.
 Suite 206,
 Helensvale Professional Centre
 3 Sir John Overall Dr., Helensvale QLD 4212.
 Ph: (07) 5573 6744
 Fax: (07) 5573 6755
 Mob: 0413 945 959
 EMAIL: mail@ssq.net.au



This plan is **NOT** a Disclosure Plan as setout in the Land Sales Act 1984 and is for General Information Only.

SCALE @ A3 **1:600** DWG. NO. **15159-76-1876**

Preliminary **SITE PLAN**
 FOR PROPOSED LOT 1877
SPRING MOUNTAIN STAGE 18A



LEGEND

- Final surface contours based on A.H.D datum at an interval of 1.0m, shown as: -24.0-
 - Natural surface contours in undisturbed areas at an interval of 1.0m shown: -24.0-
 - Easement for Services and or Access **EMT**
 - Earthworks Batter
 - Kerb/Kerb & Channel
 - Drainage Line
 - Drainage Pit
 - Drainage Gully Pit
 - Drainage MH
 - Drainage Pit & Soakage Trench
 - Water Line
 - Water Conduit
 - Water Service Point of Entry
 - Water Stop Valve
 - Fire Hydrant
 - Underground Comms
 - Comms Pit
 - Underground Electricity
 - Elec Box/Pit
 - Street Light
 - Indicative Driveway location
 - Building Envelope in accordance with Approved Building Envelope Plan 7081 P06 BE A 14/10/2015 by Saunders Havill Group
 - Q100 Flood Area
- INFORMATION NOT AVAILABLE AT THIS TIME

IMPORTANT NOTES:

This plan has been prepared for PEET Pty Ltd for the purposes of Discussion only.
 All areas and dimensions are subject to final survey and relevant authority approval.
 Location of sewer, roofwater, stormwater, water reticulation, electricity and communication lines, manholes and pits, streetscaping, banks, batters, retaining walls, fencing, footpaths & building envelopes are as shown on engineering design drawings, supplied by KN Group Pty Ltd Consulting Engineers and may differ from the as constructed location. Levels and Contours shown are not to be used for building design or construction. A site survey is required.
 For final building requirements the relevant approved Plan of Development prevail over this site plan.
 These notes form an integral part of this plan and no part of this plan may be reproduced in whole or in part without these notes.

AMENDMENTS

DESCRIPTION	DATE

SCHLENCKER SURVEYING (QLD)

Gold Coast ♦ Brisbane ♦ Rockhampton
 Consultants in Surveying,
 Mapping & Development

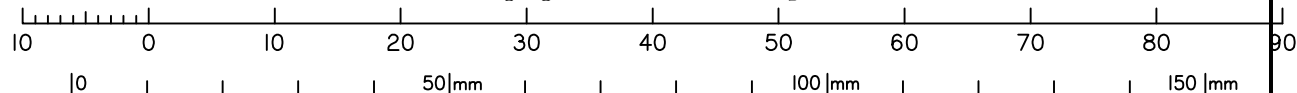


A.B.N. 36 909 833 411
 PO Box 41, Helensvale QLD 4212.

Suite 206,
 Helensvale Professional Centre
 3 Sir John Overall Dr., Helensvale QLD 4212.

Ph: (07) 5573 6744
 Fax: (07) 5573 6755
 Mob: 0413 945 959
 EMAIL: mail@ssq.net.au

Scale 1:600 @ A3 paper size - Lengths are in Metres.

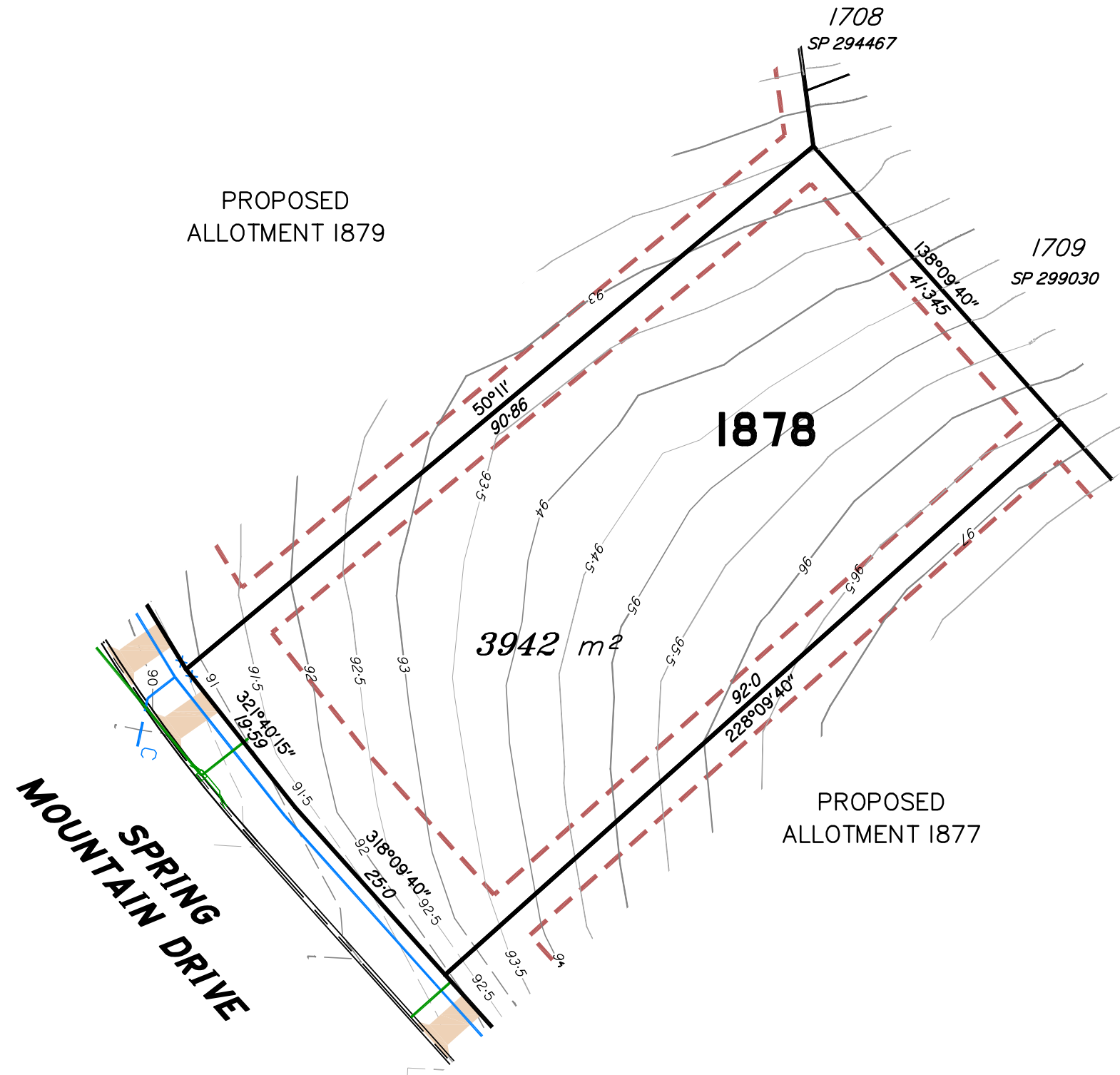


This plan is **NOT** a Disclosure Plan as set out in the Land Sales Act 1984 and is for General Information Only.

SCALE @ A3 **1:600**

DWG. NO. **15159-76-1877**

Preliminary **SITE PLAN**
 FOR PROPOSED LOT 1878
SPRING MOUNTAIN STAGE 18A



LEGEND

- Final surface contours based on A.H.D datum at an interval of 1.0m, shown as: -24.0-
 - Natural surface contours in undisturbed areas at an interval of 1.0m shown: -24.0-
 - Easement for Services and or Access **EMT**
 - Earthworks Batter
 - Kerb/Kerb & Channel
 - Drainage Line
 - Drainage Pit
 - Drainage Gully Pit
 - Drainage MH
 - Drainage Pit & Soakage Trench
 - Water Line
 - Water Conduit
 - Water Service Point of Entry
 - Water Stop Valve
 - Fire Hydrant
 - Underground Comms
 - Comms Pit
 - Underground Electricity
 - Elec Box/Pit
 - Street Light
 - Indicative Driveway location
 - Building Envelope in accordance with Approved Building Envelope Plan 7081 P06 BE A 14/10/2015 by Saunders Havill Group
 - Q100 Flood Area
- INFORMATION NOT AVAILABLE AT THIS TIME

IMPORTANT NOTES:

This plan has been prepared for PEET Pty Ltd for the purposes of Discussion only.
 All areas and dimensions are subject to final survey and relevant authority approval.
 Location of sewer, roofwater, stormwater, water reticulation, electricity and communication lines, manholes and pits, streetscaping, banks, batters, retaining walls, fencing, footpaths & building envelopes are as shown on engineering design drawings, supplied by KN Group Pty Ltd Consulting Engineers and may differ from the as constructed location.
 Levels and Contours shown are not to be used for building design or construction. A site survey is required.
 For final building requirements the relevant approved Plan of Development prevail over this site plan.
 These notes form an integral part of this plan and no part of this plan may be reproduced in whole or in part without these notes.

AMENDMENTS

DESCRIPTION	DATE

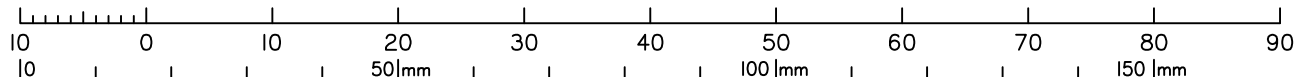
SCHLENCKER SURVEYING (QLD)
 Gold Coast ♦ Brisbane ♦ Rockhampton
 Consultants in Surveying,
 Mapping & Development

A.B.N. 36 909 833 411
 PO Box 41, Helensvale QLD 4212.

Suite 206,
 Helensvale Professional Centre
 3 Sir John Overall Dr., Helensvale QLD 4212.

Ph.: (07) 5573 6744
 Fax: (07) 5573 6755
 Mob.: 0413 945 959
 EMAIL: mail@ssq.net.au

Scale 1:600 @ A3 paper size - Lengths are in Metres.

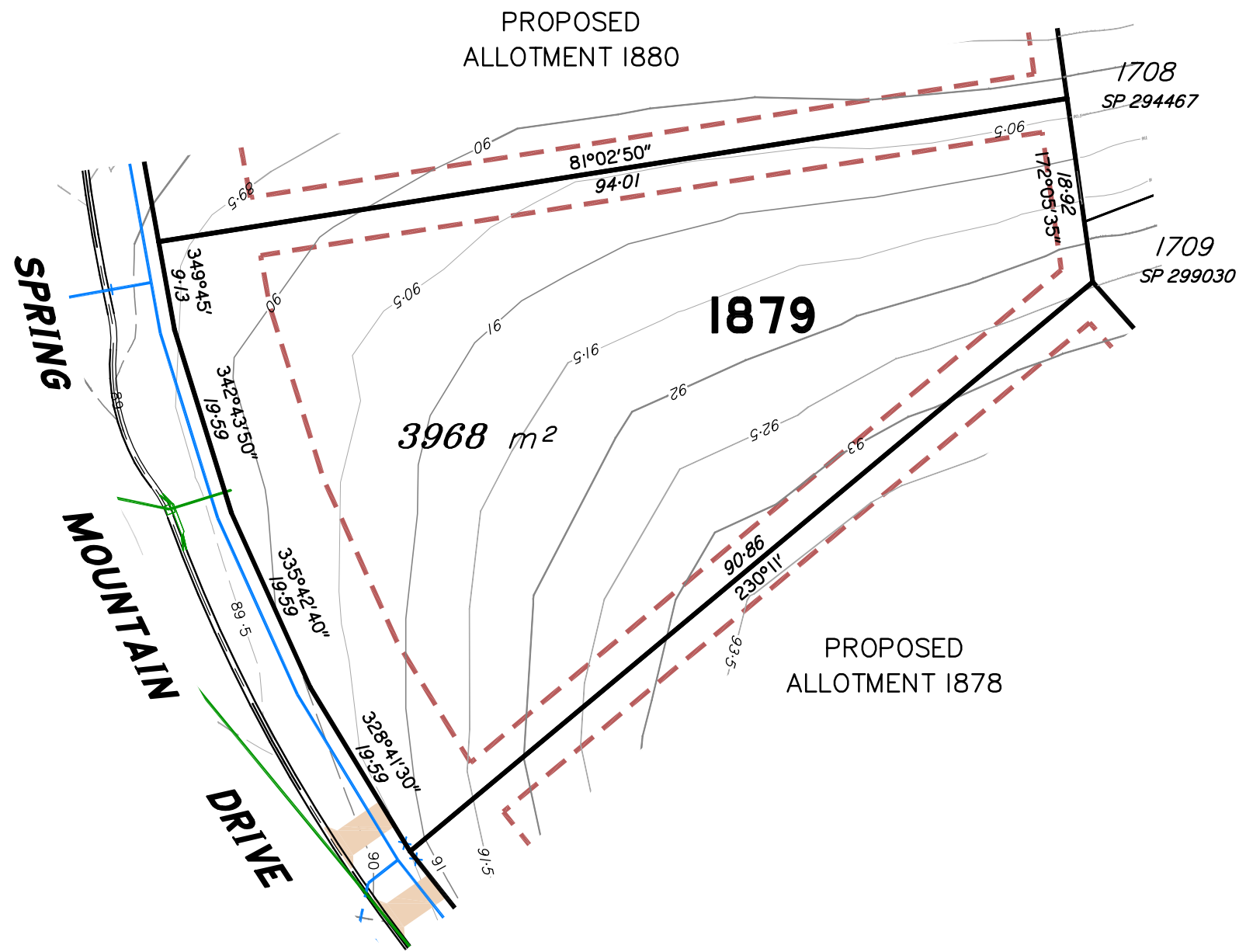


This plan is **NOT** a Disclosure Plan as setout in the Land Sales Act 1984 and is for General Information Only.

SCALE @ A3 **1:600**

DWG. NO. **15159-76-1878**

Preliminary **SITE PLAN**
 FOR PROPOSED LOT 1879
SPRING MOUNTAIN STAGE 18A



LEGEND

Final surface contours based on A.H.D datum at an interval of 1.0m, shown as: -24.0-

Natural surface contours in undisturbed areas at an interval of 1.0m shown: -24.0-

Easement for Services and or Access **EMT**

Earthworks Batter

Kerb/Kerb & Channel

Drainage Line

Drainage Pit

Drainage Gully Pit

Drainage MH

Drainage Pit & Soakage Trench

Water Line

Water Conduit

Water Service Point of Entry

Water Stop Valve

Fire Hydrant

Underground Comms

Comms Pit

Underground Electricity

Elec Box/Pit

Street Light

Indicative Driveway location

Building Envelope in accordance with Approved Building Envelope Plan 7081 P06 BE A 14/10/2015 by Saunders Havill Group

Q100 Flood Area

INFORMATION NOT AVAILABLE AT THIS TIME

IMPORTANT NOTES:

This plan has been prepared for PEET Pty Ltd for the purposes of Discussion only. All areas and dimensions are subject to final survey and relevant authority approval.

Location of sewer, roofwater, stormwater, water reticulation, electricity and communication lines, manholes and pits, streetscaping, banks, batters, retaining walls, fencing, footpaths & building envelopes are as shown on engineering design drawings, supplied by KN Group Pty Ltd Consulting Engineers and may differ from the as constructed location. Levels and Contours shown are not to be used for building design or construction. A site survey is required.

For final building requirements the relevant approved Plan of Development prevail over this site plan.

These notes form an integral part of this plan and no part of this plan may be reproduced in whole or in part without these notes.

AMENDMENTS	
DESCRIPTION	DATE

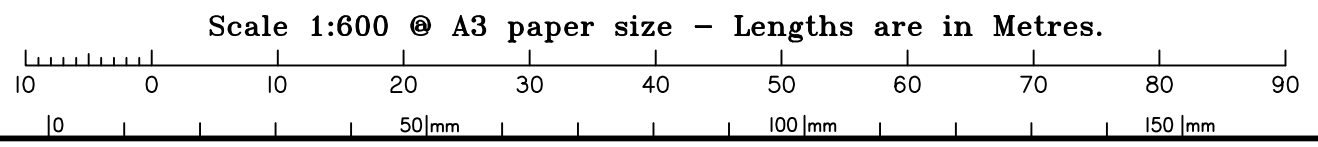
SCHLENCKER SURVEYING (QLD)
 Gold Coast ♦ Brisbane ♦ Rockhampton
 Consultants in Surveying, Mapping & Development

A.B.N. 36 909 833 411
 PO Box 41, Helensvale QLD 4212.

Suite 206,
 Helensvale Professional Centre
 3 Sir John Overall Dr., Helensvale QLD 4212.

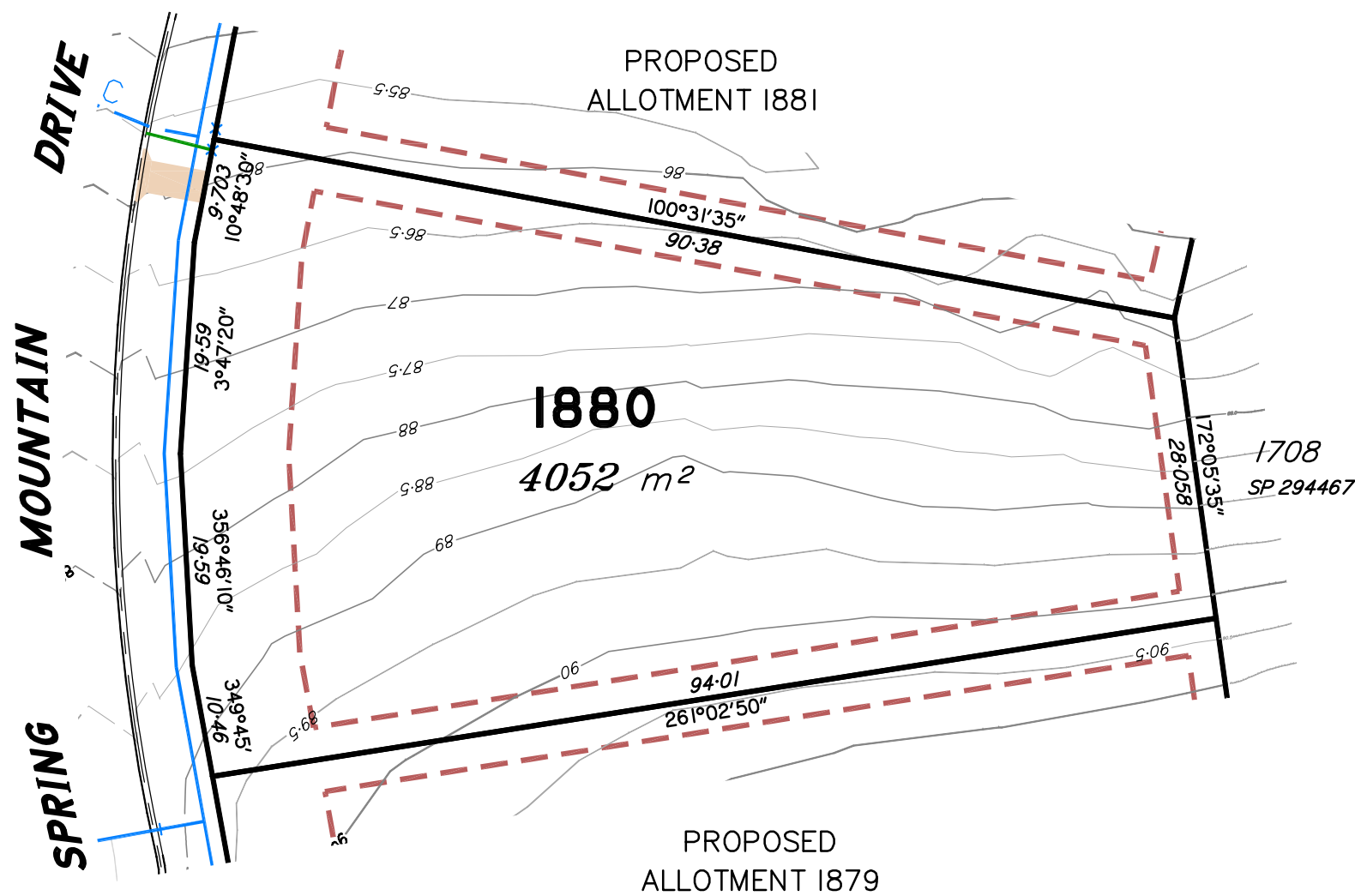
Ph: (07) 5573 6744
 Fax: (07) 5573 6755
 Mob: 0413 945 959
 EMAIL: mail@ssq.net.au

SCALE @ A3 **1:600** DWG. NO. **15159-76-1879**



This plan is **NOT** a Disclosure Plan as setout in the Land Sales Act 1984 and is for General Information Only.

Preliminary **SITE PLAN**
FOR PROPOSED LOT 1880
SPRING MOUNTAIN STAGE 18A



LEGEND

- Final surface contours based on A.H. SP 294467 datum at an interval of 1.0m, shown as: -24.0-
- Natural surface contours in undisturbed areas at an interval of 1.0m shown: -24.0-
- Easement for Services and or Access **EMT**
- Earthworks Batter
- Kerb/Kerb & Channel
- Drainage Line
- Drainage Pit
- Drainage Gully Pit
- Drainage MH
- Drainage Pit & Soakage Trench
- Water Line
- Water Conduit
- Water Service Point of Entry
- Water Stop Valve
- Fire Hydrant
- Underground Comms
- Comms Pit
- Underground Electricity
- Elec Box/Pit
- Street Light
- Indicative Driveway location
- Building Envelope in accordance with Approved Building Envelope Plan 7081 P06 BE A 14/10/2015 by Saunders Havill Group
- Q100 Flood Area
- INFORMATION NOT AVAILABLE AT THIS TIME

IMPORTANT NOTES:

This plan has been prepared for PEET Pty Ltd for the purposes of Discussion only. All areas and dimensions are subject to final survey and relevant authority approval. Location of sewer, roofwater, stormwater, water reticulation, electricity and communication lines, manholes and pits, streetscaping, banks, batters, retaining walls, fencing, footpaths & building envelopes are as shown on engineering design drawings, supplied by KN Group Pty Ltd Consulting Engineers and may differ from the as constructed location. Levels and Contours shown are not to be used for building design or construction. A site survey is required. For final building requirements the relevant approved Plan of Development prevail over this site plan. These notes form an integral part of this plan and no part of this plan may be reproduced in whole or in part without these notes.

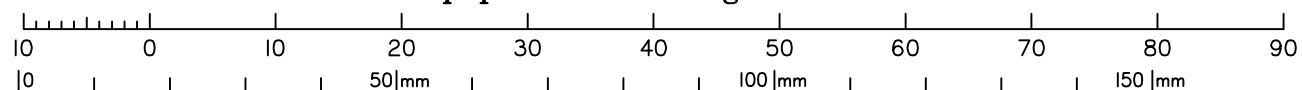
AMENDMENTS

DESCRIPTION	DATE

SCHLENCKER SURVEYING (QLD)
Gold Coast ♦ Brisbane ♦ Rockhampton
Consultants in Surveying, Mapping & Development

A.B.N. 36 909 833 411
PO Box 41, Helensvale QLD 4212.
Suite 206,
Helensvale Professional Centre
3 Sir John Overall Dr., Helensvale QLD 4212.
Ph: (07) 5573 6744
Fax: (07) 5573 6755
Mob: 0413 945 959
EMAIL: mail@ssq.net.au

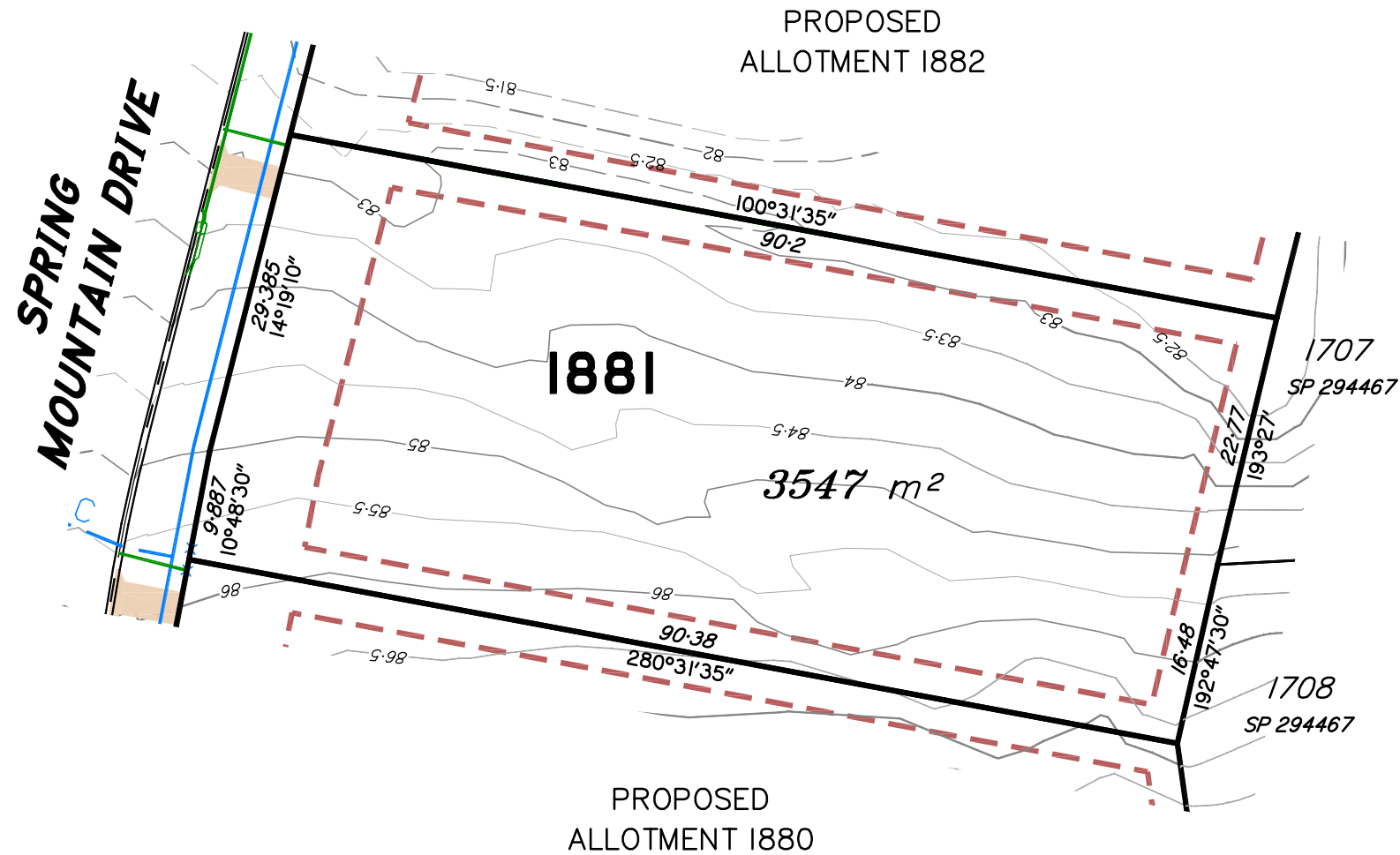
Scale 1:600 @ A3 paper size - Lengths are in Metres.



This plan is **NOT** a Disclosure Plan as setout in the Land Sales Act 1984 and is for General Information Only.

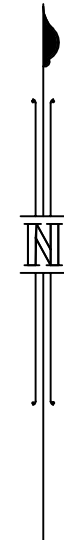
SCALE @ A3 **1:600** DWG. NO. **15159-76-1880**

Preliminary **SITE PLAN**
 FOR PROPOSED LOT 1881
 SPRING MOUNTAIN STAGE 18A



LEGEND

- Final surface contours based on A.H.D datum at an interval of 1.0m, shown as: -24.0-
- Natural surface contours in undisturbed areas at an interval of 1.0m shown: -24.0-
- Easement for Services and or Access **EMT**
- Earthworks Batter
- Kerb/Kerb & Channel
- Drainage Line
- Drainage Pit
- Drainage Gully Pit
- Drainage MH
- Drainage Pit & Soakage Trench
- Water Line
- Water Conduit
- Water Service Point of Entry
- Water Stop Valve
- Fire Hydrant
- Underground Comms
- Comms Pit
- Underground Electricity
- Elec Box/Pit
- Street Light
- Indicative Driveway location
- Building Envelope in accordance with Approved Building Envelope Plan 7081 P06 BE A 14/10/2015 by Saunders Havill Group
- Q100 Flood Area



IMPORTANT NOTES:

This plan has been prepared for PEET Pty Ltd for the purposes of Discussion only.
 All areas and dimensions are subject to final survey and relevant authority approval.
 Location of sewer, roofwater, stormwater, water reticulation, electricity and communication lines, manholes and pits, streetscaping, banks, batters, retaining walls, fencing, footpaths & building envelopes are as shown on engineering design drawings, supplied by KN Group Pty Ltd Consulting Engineers and may differ from the as constructed location. Levels and Contours shown are not to be used for building design or construction. A site survey is required.
 For final building requirements the relevant approved Plan of Development prevail over this site plan.
 These notes form an integral part of this plan and no part of this plan may be reproduced in whole or in part without these notes.

AMENDMENTS

DESCRIPTION	DATE

SCHLENCKER SURVEYING (QLD)

Gold Coast ♦ Brisbane ♦ Rockhampton
 Consultants in Surveying,
 Mapping & Development

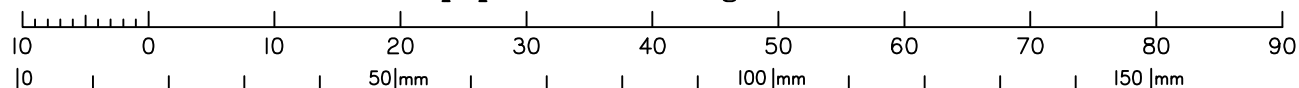


A.B.N. 36 909 833 411
 PO Box 41, Helensvale QLD 4212.

Suite 206,
 Helensvale Professional Centre
 3 Sir John Overall Dr., Helensvale QLD 4212.

Ph.: (07) 5573 6744
 Fax: (07) 5573 6755
 Mob.: 0413 945 959
 EMAIL: mail@ssq.net.au

Scale 1:600 @ A3 paper size - Lengths are in Metres.

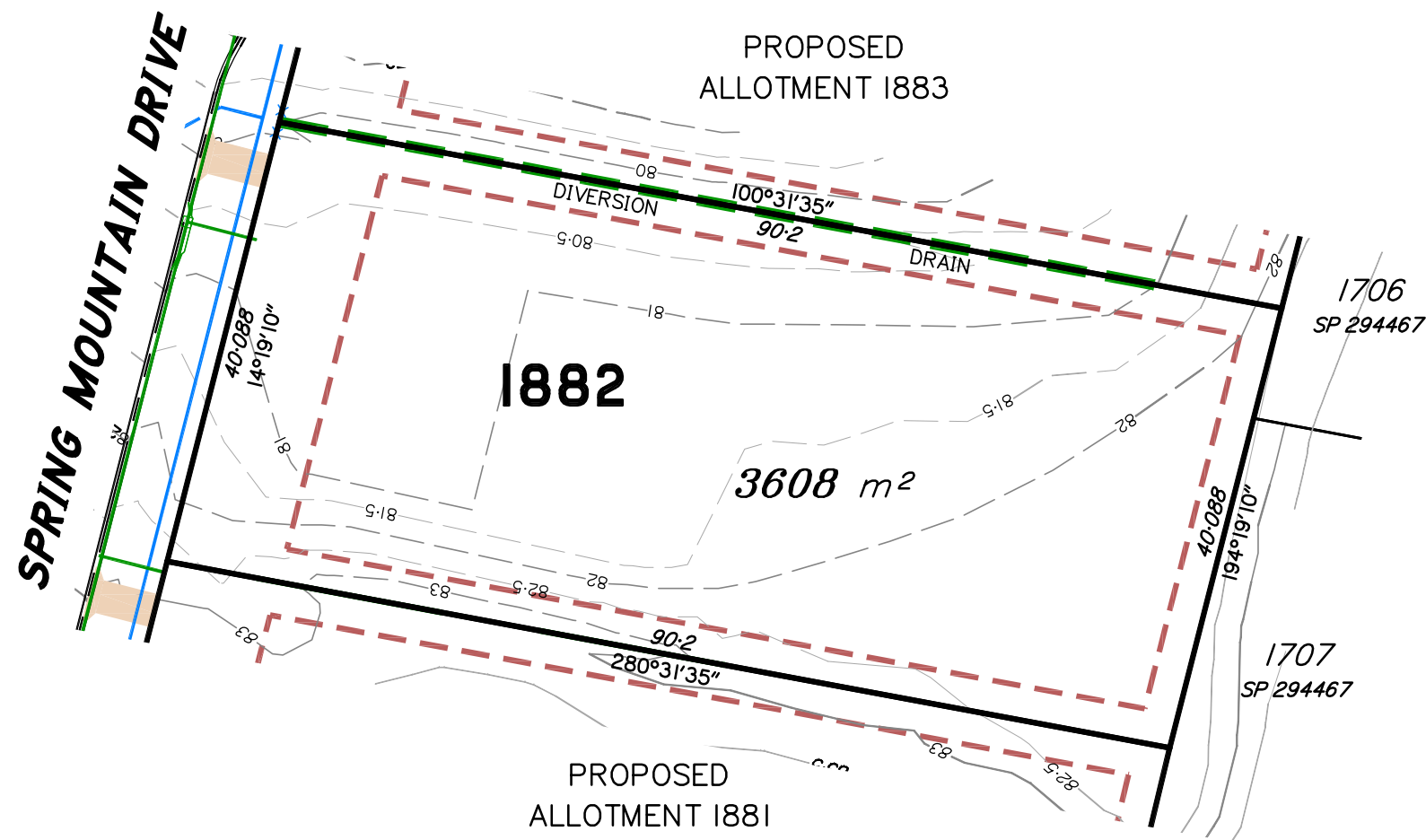


This plan is **NOT** a Disclosure Plan as setout in the Land Sales Act 1984 and is for General Information Only.

SCALE @ A3 **1:600**

DWG. NO. **15159-76-1881**

Preliminary **SITE PLAN**
 FOR PROPOSED LOT 1882
 SPRING MOUNTAIN STAGE 18A



LEGEND

- Final surface contours based on A.H.D datum at an interval of 1.0m, shown as: -24.0-
- Natural surface contours in undisturbed areas at an interval of 1.0m shown: -24.0-
- Easement for Services and or Access **EMT**
- Earthworks Batter
- Kerb/Kerb & Channel
- Drainage Line
- Drainage Pit
- Drainage Gully Pit
- Drainage MH
- Drainage Pit & Soakage Trench
- Water Line
- Water Conduit
- Water Service Point of Entry
- Water Stop Valve
- Fire Hydrant
- Underground Comms
- Comms Pit
- Underground Electricity
- Elec Box/Pit
- Street Light
- Indicative Driveway location
- Building Envelope in accordance with Approved Building Envelope Plan 7081 P06 BE A 14/10/2015 by Saunders Havill Group
- Q100 Flood Area

INFORMATION NOT AVAILABLE AT THIS TIME

IMPORTANT NOTES:

This plan has been prepared for PEET Pty Ltd for the purposes of Discussion only.
 All areas and dimensions are subject to final survey and relevant authority approval.
 Location of sewer, roofwater, stormwater, water reticulation, electricity and communication lines, manholes and pits, streetscaping, banks, batters, retaining walls, fencing, footpaths & building envelopes are as shown on engineering design drawings, supplied by KN Group Pty Ltd Consulting Engineers and may differ from the as constructed location. Levels and Contours shown are not to be used for building design or construction. A site survey is required.
 For final building requirements the relevant approved Plan of Development prevail over this site plan.
 These notes form an integral part of this plan and no part of this plan may be reproduced in whole or in part without these notes.

AMENDMENTS

DESCRIPTION	DATE

SCHLENCKER SURVEYING (QLD)
 Gold Coast ♦ Brisbane ♦ Rockhampton
 Consultants in Surveying,
 Mapping & Development



A.B.N. 36 909 833 411
 PO Box 41, Helensvale QLD 4212.

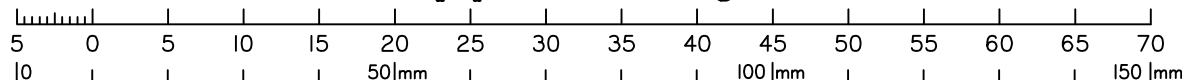
Suite 206,
 Helensvale Professional Centre
 3 Sir John Overall Dr., Helensvale QLD 4212.

Ph.: (07) 5573 6744
 Fax: (07) 5573 6755
 Mob.: 0413 945 959
 EMAIL: mail@ssq.net.au

SCALE @ A3 **1:600**

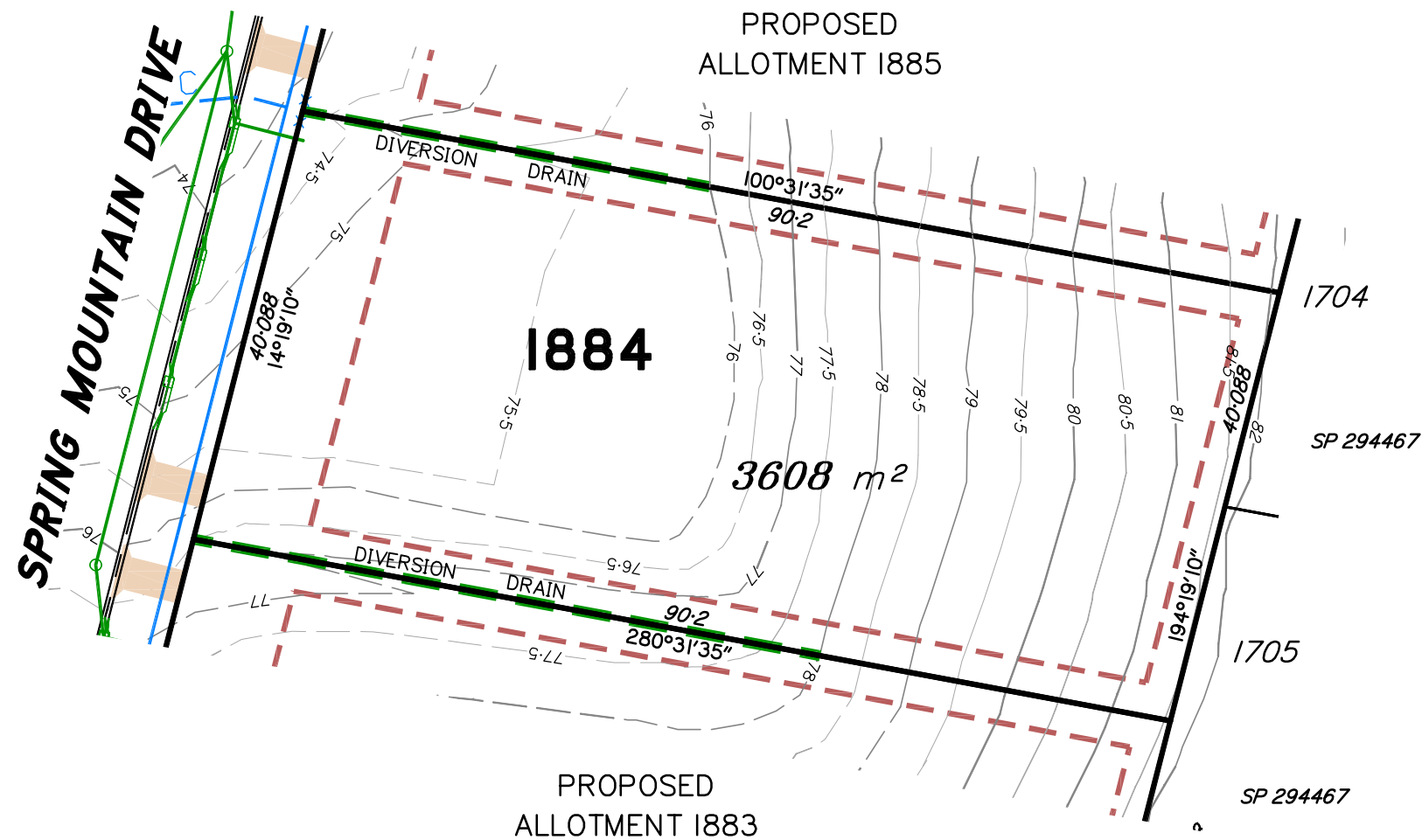
DWG. NO. **15159-76-1882**

Scale 1:600 @ A3 paper size - Lengths are in Metres.



This plan is **NOT** a Disclosure Plan as set out in the Land Sales Act 1984 and is for General Information Only.

Preliminary **SITE PLAN**
 FOR PROPOSED LOT 1884
 SPRING MOUNTAIN STAGE 18A



LEGEND

- Final surface contours based on A.H.D datum at an interval of 1.0m, shown as: -24.0-
- Natural surface contours in undisturbed areas at an interval of 1.0m shown: -24.0-
- Easement for Services and or Access EMT
- Earthworks Batter Top Toe
- Kerb/Kerb & Channel
- Drainage Line
- Drainage Pit
- Drainage Gully Pit
- Drainage MH
- Drainage Pit & Soakage Trench
- Water Line
- Water Conduit
- Water Service Point of Entry
- Water Stop Valve
- Fire Hydrant
- Underground Comms
- Comms Pit
- Underground Electricity
- Elec Box/Pit
- Street Light
- Indicative Driveway location
- Building Envelope in accordance with Approved Building Envelope Plan 7081 P06 BE A 14/10/2015 by Saunders Havill Group
- Q100 Flood Area

INFORMATION NOT AVAILABLE AT THIS TIME

IMPORTANT NOTES:

This plan has been prepared for PEET Pty Ltd for the purposes of Discussion only. All areas and dimensions are subject to final survey and relevant authority approval. Location of sewer, roofwater, stormwater, water reticulation, electricity and communication lines, manholes and pits, streetscaping, banks, batters, retaining walls, fencing, footpaths & building envelopes are as shown on engineering design drawings, supplied by KN Group Pty Ltd Consulting Engineers and may differ from the as constructed location. Levels and Contours shown are not to be used for building design or construction. A site survey is required. For final building requirements the relevant approved Plan of Development prevail over this site plan. These notes form an integral part of this plan and no part of this plan may be reproduced in whole or in part without these notes.

AMENDMENTS

DESCRIPTION	DATE

SCHLENCKER SURVEYING (QLD)

Gold Coast ♦ Brisbane ♦ Rockhampton
 Consultants in Surveying,
 Mapping & Development

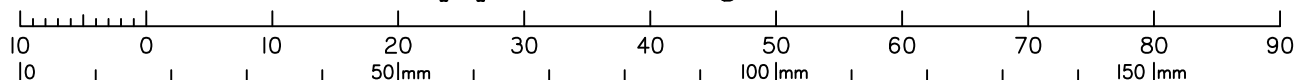


A.B.N. 36 909 833 411
 PO Box 41, Helensvale QLD 4212.

Suite 206,
 Helensvale Professional Centre
 3 Sir John Overall Dr., Helensvale QLD 4212.

Ph.: (07) 5573 6744
 Fax: (07) 5573 6755
 Mob.: 0413 945 959
 EMAIL: mail@ssq.net.au

Scale 1:600 @ A3 paper size - Lengths are in Metres.

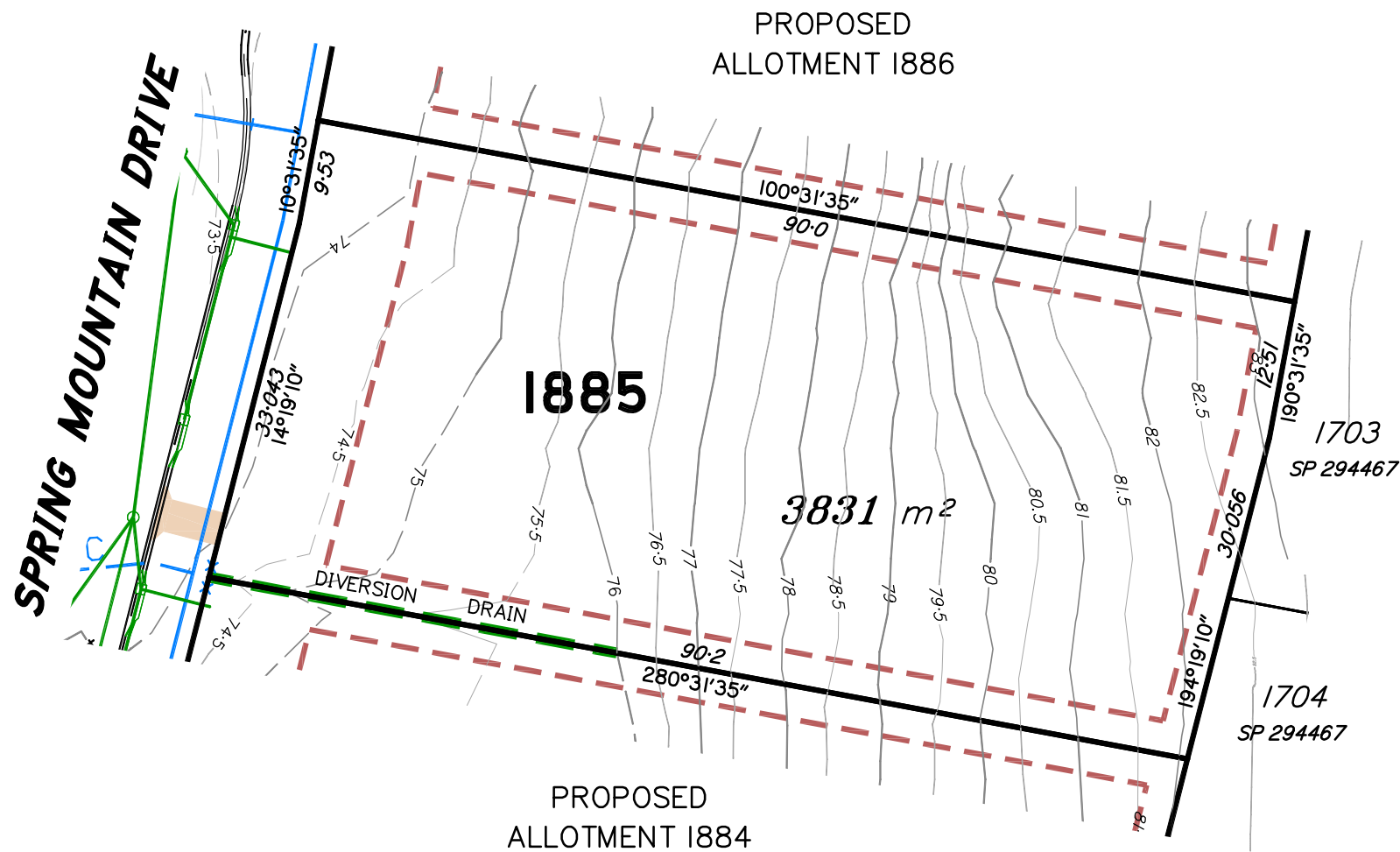


This plan is **NOT** a Disclosure Plan as setout in the Land Sales Act 1984 and is for General Information Only.

SCALE @ A3 **1:600**

DWG. NO. 15159-76-1884

Preliminary **SITE PLAN**
 FOR PROPOSED LOT 1885
 SPRING MOUNTAIN STAGE 18A



LEGEND

- Final surface contours based on A.H.D datum at an interval of 1.0m, shown as: -24.0-
- Natural surface contours in undisturbed areas at an interval of 1.0m shown: -24.0-
- Easement for Services and or Access **EMT**
- Earthworks Batter
- Kerb/Kerb & Channel
- Drainage Line
- Drainage Pit
- Drainage Gully Pit
- Drainage MH
- Drainage Pit & Soakage Trench
- Water Line
- Water Conduit
- Water Service Point of Entry
- Water Stop Valve
- Fire Hydrant
- Underground Comms
- Comms Pit
- Underground Electricity
- Elec Box/Pit
- Street Light
- Indicative Driveway location
- Building Envelope in accordance with Approved Building Envelope Plan 7081 P06 BE A 14/10/2015 by Saunders Havill Group
- Q100 Flood Area

INFORMATION NOT AVAILABLE AT THIS TIME

IMPORTANT NOTES:

This plan has been prepared for PEET Pty Ltd for the purposes of Discussion only. All areas and dimensions are subject to final survey and relevant authority approval. Location of sewer, roofwater, stormwater, water reticulation, electricity and communication lines, manholes and pits, streetscaping, banks, batters, retaining walls, fencing, footpaths & building envelopes are as shown on engineering design drawings, supplied by KN Group Pty Ltd Consulting Engineers and may differ from the as constructed location. Levels and Contours shown are not to be used for building design or construction. A site survey is required. For final building requirements the relevant approved Plan of Development prevail over this site plan. These notes form an integral part of this plan and no part of this plan may be reproduced in whole or in part without these notes.

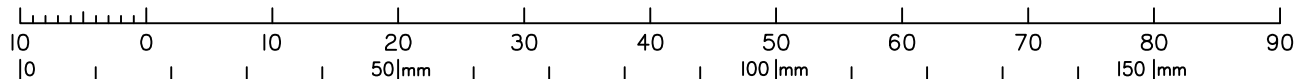
AMENDMENTS

DESCRIPTION	DATE

SCHLENCKER SURVEYING (QLD)
 Gold Coast ♦ Brisbane ♦ Rockhampton
 Consultants in Surveying, Mapping & Development

A.B.N. 36 909 833 411
 PO Box 41, Helensvale QLD 4212.
 Suite 206,
 Helensvale Professional Centre
 3 Sir John Overall Dr., Helensvale QLD 4212.
 Ph: (07) 5573 6744
 Fax: (07) 5573 6755
 Mob: 0413 945 959
 EMAIL: mail@ssq.net.au

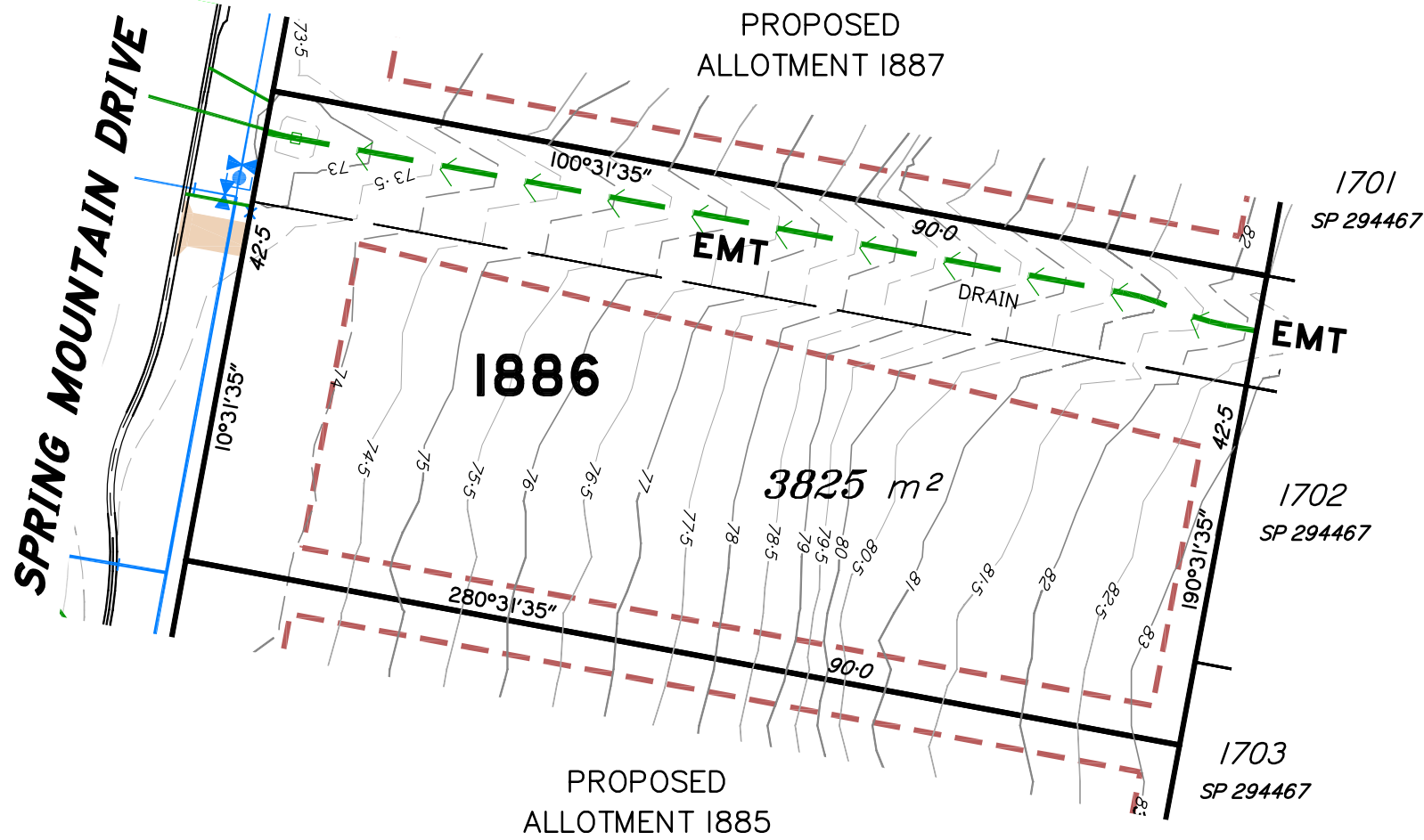
Scale 1:600 @ A3 paper size - Lengths are in Metres.



This plan is **NOT** a Disclosure Plan as setout in the Land Sales Act 1984 and is for General Information Only.

SCALE @ A3 **1:600** DWG. NO. **15159-76-1885**

Preliminary **SITE PLAN**
 FOR PROPOSED LOT 1886
 SPRING MOUNTAIN STAGE 18A



LEGEND

- Final surface contours based on A.H.D datum at an interval of 1.0m, shown as: -24.0-
 - Natural surface contours in undisturbed areas at an interval of 1.0m shown: -24.0-
 - Easement for Services and or Access **EMT**
 - Earthworks Batter
 - Kerb/Kerb & Channel
 - Drainage Line
 - Drainage Pit
 - Drainage Gully Pit
 - Drainage MH
 - Drainage Pit & Soakage Trench
 - Water Line
 - Water Conduit
 - Water Service Point of Entry
 - Water Stop Valve
 - Fire Hydrant
 - Underground Comms
 - Comms Pit
 - Underground Electricity
 - Elec Box/Pit
 - Street Light
 - Indicative Driveway location
 - Building Envelope in accordance with Approved Building Envelope Plan 7081 P06 BE A 14/10/2015 by Saunders Havill Group
 - Q100 Flood Area
- INFORMATION NOT AVAILABLE AT THIS TIME

IMPORTANT NOTES:

This plan has been prepared for PEET Pty Ltd for the purposes of Discussion only.
 All areas and dimensions are subject to final survey and relevant authority approval.
 Location of sewer, roofwater, stormwater, water reticulation, electricity and communication lines, manholes and pits, streetscaping, banks, batters, retaining walls, fencing, footpaths & building envelopes are as shown on engineering design drawings, supplied by KN Group Pty Ltd Consulting Engineers and may differ from the as constructed location. Levels and Contours shown are not to be used for building design or construction. A site survey is required.
 For final building requirements the relevant approved Plan of Development prevail over this site plan.
 These notes form an integral part of this plan and no part of this plan may be reproduced in whole or in part without these notes.

AMENDMENTS

DESCRIPTION	DATE

SCHLENCKER SURVEYING (QLD)

Gold Coast ♦ Brisbane ♦ Rockhampton
 Consultants in Surveying,
 Mapping & Development

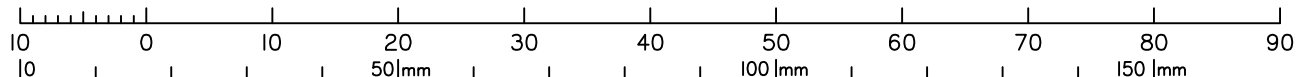


A.B.N. 36 909 833 411
 PO Box 41, Helensvale QLD 4212.

Suite 206,
 Helensvale Professional Centre
 3 Sir John Overall Dr., Helensvale QLD 4212.

Ph: (07) 5573 6744
 Fax: (07) 5573 6755
 Mob: 0413 945 959
 EMAIL: mail@ssq.net.au

Scale 1:600 @ A3 paper size - Lengths are in Metres.



This plan is **NOT** a Disclosure Plan as setout in the Land Sales Act 1984 and is for General Information Only.

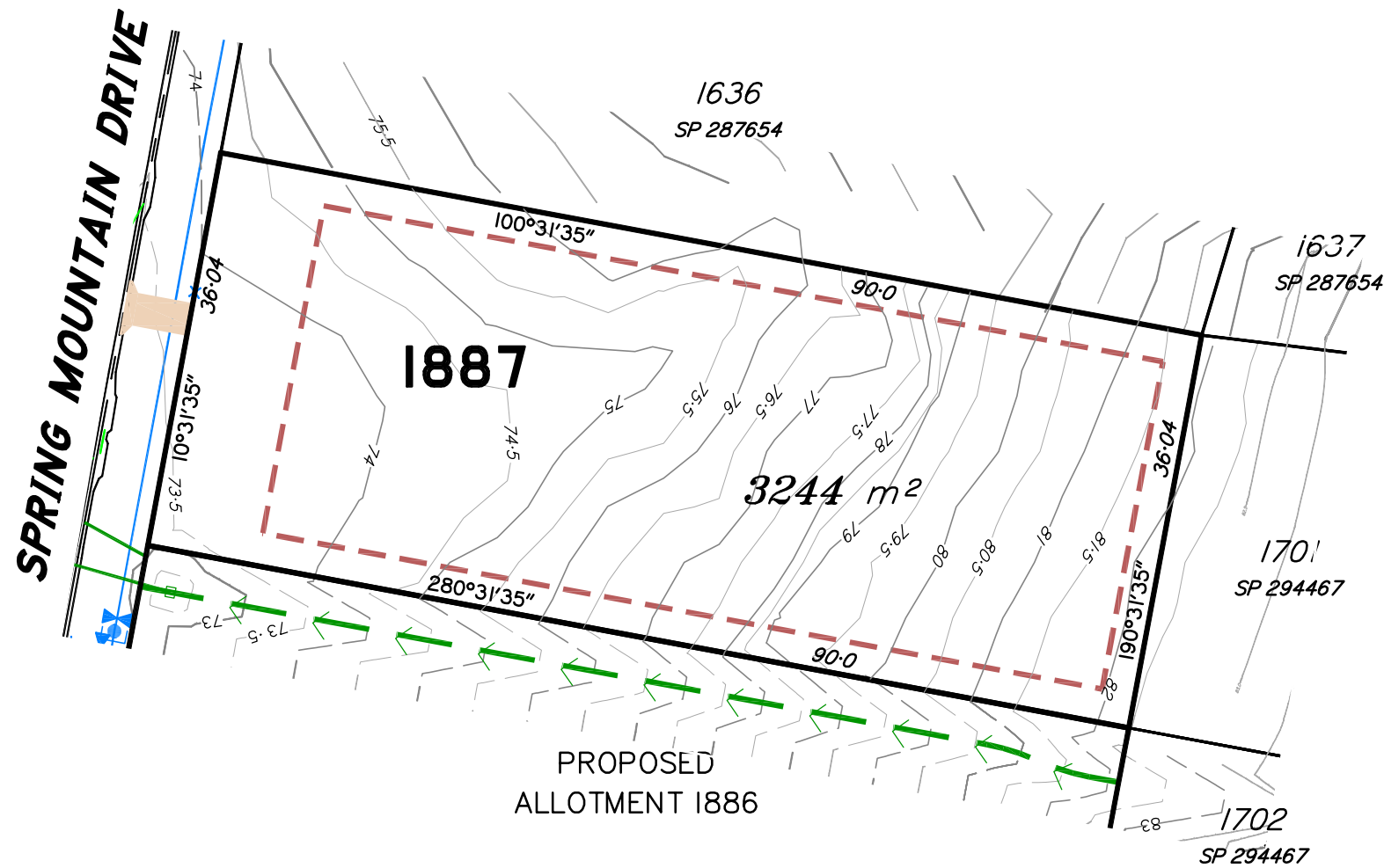
SCALE @ A3 **1:600**

DWG. NO. **15159-76-1886**

Preliminary **SITE PLAN**

FOR PROPOSED LOT 1887

SPRING MOUNTAIN STAGE 18A



LEGEND

- Final surface contours based on A.H.D datum at an interval of 1.0m, shown as: ---24.0---
- Natural surface contours in undisturbed areas at an interval of 1.0m shown: —24.0—
- Easement for Services and or Access EMT
- Earthworks Batter Top
Toe
- Kerb/Kerb & Channel
- Drainage Line
- Drainage Pit
- Drainage Gully Pit
- Drainage MH
- Drainage Pit & Soakage Trench
- Water Line
- Water Conduit
- Water Service Point of Entry
- Water Stop Valve
- Fire Hydrant
- Underground Comms
- Comms Pit
- Underground Electricity
- Elec Box/Pit
- Street Light
- Indicative Driveway location
- Building Envelope in accordance with Approved Building Envelope Plan 7081 P06 BE A 14/10/2015 by Saunders Havill Group
- Q100 Flood Area

INFORMATION NOT AVAILABLE AT THIS TIME

IMPORTANT NOTES:

This plan has been prepared for PEET Pty Ltd for the purposes of Discussion only. All areas and dimensions are subject to final survey and relevant authority approval. Location of sewer, roofwater, stormwater, water reticulation, electricity and communication lines, manholes and pits, streetscaping, banks, batters, retaining walls, fencing, footpaths & building envelopes are as shown on engineering design drawings, supplied by KN Group Pty Ltd Consulting Engineers and may differ from the as constructed location. Levels and Contours shown are not to be used for building design or construction. A site survey is required. For final building requirements the relevant approved Plan of Development prevail over this site plan. These notes form an integral part of this plan and no part of this plan may be reproduced in whole or in part without these notes.

AMENDMENTS

DESCRIPTION	DATE

SCHLENCKER SURVEYING (QLD)

Gold Coast ♦ Brisbane ♦ Rockhampton
Consultants in Surveying,
Mapping & Development

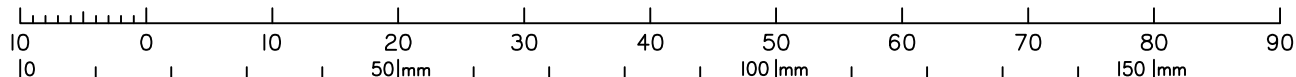


A.B.N. 36 909 833 411
PO Box 41, Helensvale QLD 4212.

Suite 206,
Helensvale Professional Centre
3 Sir John Overall Dr., Helensvale QLD 4212.

Ph.: (07) 5573 6744
Fax: (07) 5573 6755
Mob.: 0413 945 959
EMAIL: mail@ssq.net.au

Scale 1:600 @ A3 paper size – Lengths are in Metres.



This plan is **NOT** a Disclosure Plan as set out in the Land Sales Act 1984 and is for General Information Only.

SCALE @ A3 **1:600**

DWG. NO. **15159-76-1887**