

BUILDING ENVELOPES

Building Envelopes are
10 metres from front (Road) boundary,
3 metres from side boundaries,
3 metres from rear boundaries
unless otherwise shown

SUBJECT TO FINAL SURVEY & COUNCIL APPROVAL.

Envelopes are in accordance with Saunders Havill
Group Pty Ltd
Drawing No. 7081 P 06 BE A (RL/44/2008/B)
received 25/05/2016.

No O Mk
O Screw
OPM (New Conn)

509 (PT)

SEE SHEET 1, 6 & 7

OP Renwd

NEW MOUNTAIN ROAD DRIVE

SPRING

LOGAN CITY COUNCIL
APPROVED DEVELOPMENT ENVELOPE
AREA PLAN
This plan is the approved development envelope area plan for
Development Application
SP/168/2020

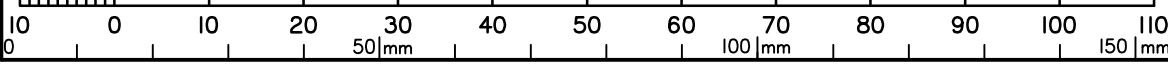
SUBJECT TO ANY REQUIREMENTS OF THE
APPROVED BUSHFIRE MANAGEMENT PLAN
FROM DEVELOPMENT PERMIT REFERENCE
RL/44/2008/F.

DIAGRAM A
NOT TO SCALE

State copyright reserved.

Insert Plan Number **SP313678**

Scale 1:800 - Lengths are in Metres.



1847
SEE SHEET 4

1881
SEE SHEET 4

1882
2624m²

1883
2624m²

1884
2624m²

1885
2815m²

1886
1963m²

1887
2313m²

SEE DIAG A EMT U

900 m²

1634
SP 287654

1636
SP 287654

1637
SP 287654

995
SP 287654

OP Renwd
O Screw

OP Renwd

OP Remvd
O Screw

OP
Cen SFP
0-14W, 0-08N

1701
SP 294467

OP
Cen SFP
0-12E, 0-03S

SP 294467
EMT T

1702
SP 294467

OP
Cen SFP
0-06E, 0-03N

1703
SP 294467

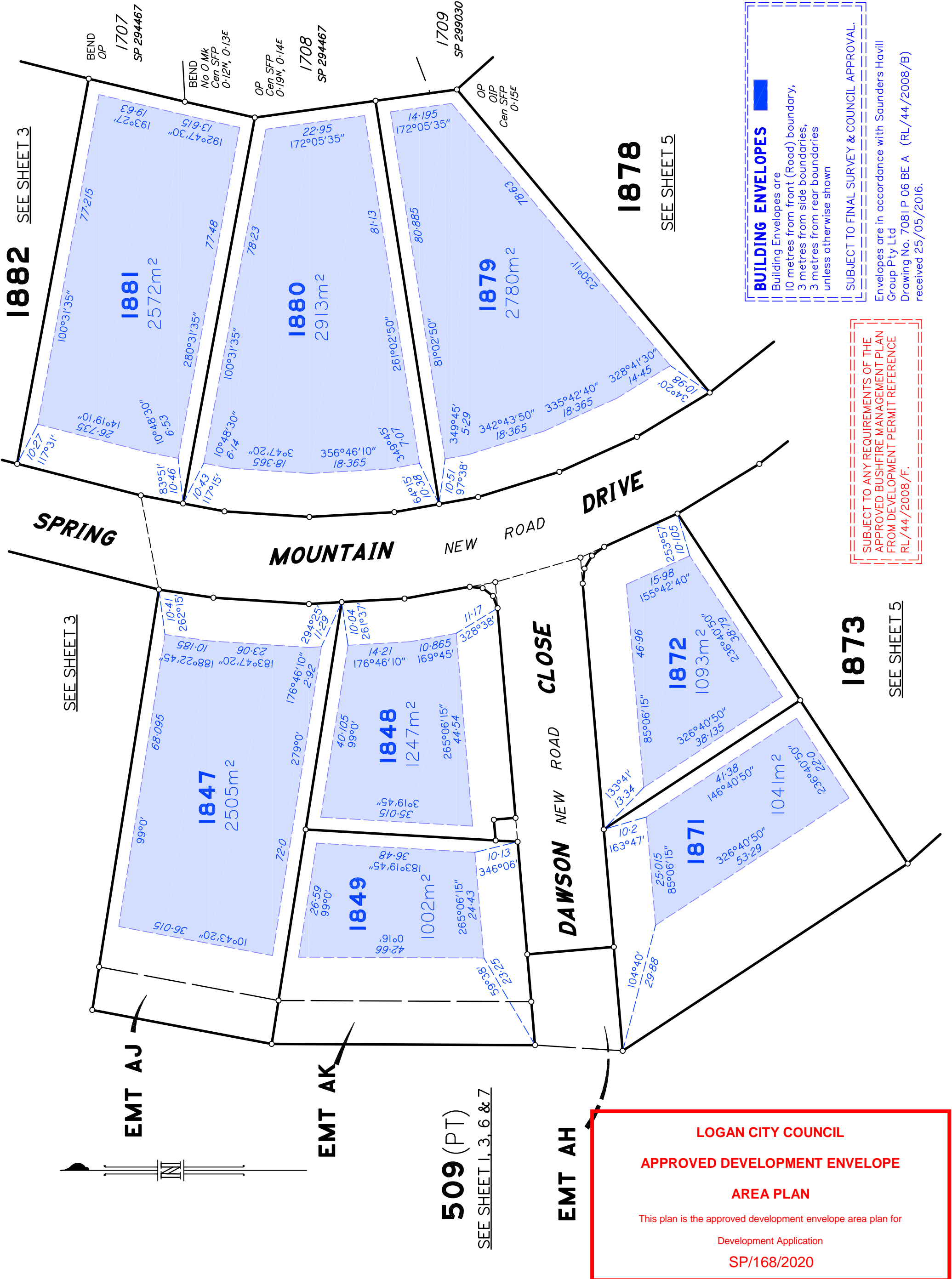
1704
SP 294467

1705
SP 294467

1706
SP 294467

1707
SP 294467

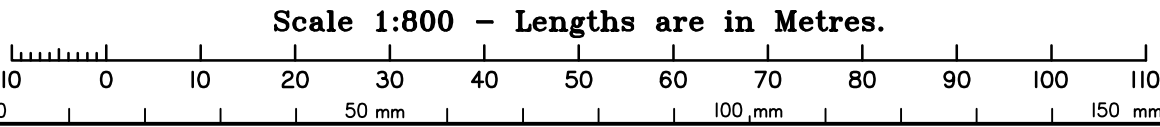
BEND
OP

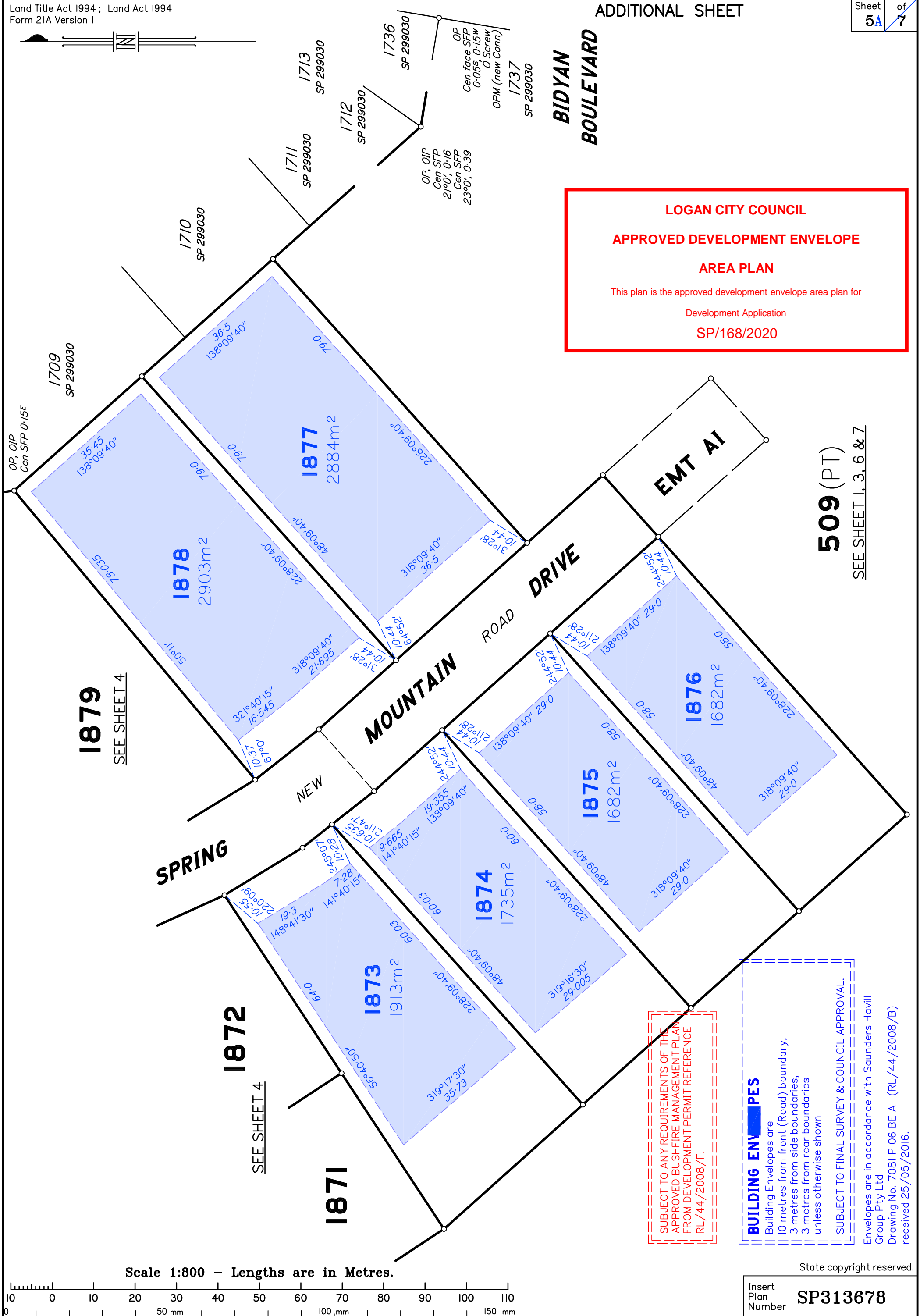


BUILDING ENVELOPES
Building Envelopes are 10 metres from front (Road) boundary, 3 metres from side boundaries, 3 metres from rear boundaries unless otherwise shown.
SUBJECT TO FINAL SURVEY & COUNCIL APPROVAL.
Envelopes are in accordance with Saunders Havill Group Pty Ltd Drawing No. 7081 P 06 BE A (RL/44/2008/B) received 25/05/2016.

SUBJECT TO ANY REQUIREMENTS OF THE APPROVED BUSHFIRE MANAGEMENT PLAN FROM DEVELOPMENT PERMIT REFERENCE RL/44/2008/F.

LOGAN CITY COUNCIL
APPROVED DEVELOPMENT ENVELOPE
AREA PLAN
This plan is the approved development envelope area plan for
Development Application
SP/168/2020





LOGAN CITY COUNCIL
APPROVED DEVELOPMENT ENVELOPE
AREA PLAN
This plan is the approved development envelope area plan for
Development Application
SP/168/2020

509 (PT)
SEE SHEET 1, 3, 6 & 7

1879
SEE SHEET 4

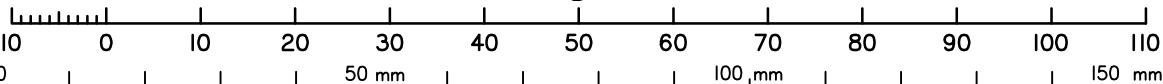
SEE SHEET 4

SUBJECT TO ANY REQUIREMENTS OF THE APPROVED BUSHFIRE MANAGEMENT PLAN FROM DEVELOPMENT PERMIT REFERENCE RL/44/2008/F.

BUILDING ENVELOPES
Building Envelopes are
10 metres from front (Road) boundary,
3 metres from side boundaries,
3 metres from rear boundaries
unless otherwise shown
SUBJECT TO FINAL SURVEY & COUNCIL APPROVAL.

Envelopes are in accordance with Saunders Havill Group Pty Ltd Drawing No. 7081 P 06 BE A (RL/44/2008/B) received 25/05/2016.

Scale 1:800 - Lengths are in Metres.



State copyright reserved.

Insert Plan Number **SP313678**