

Preliminary

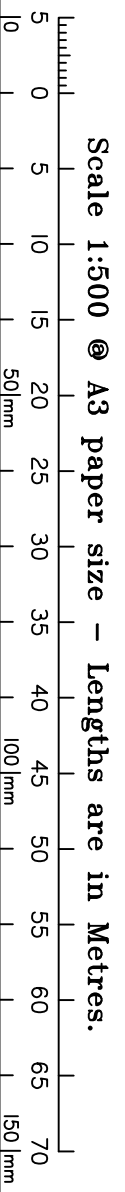
SITE PLAN

FOR PROPOSED LOT 1522
SPRING MOUNTAIN STAGE 15B



PROPOSED
 ALLOTMENT 1523

FUTURE
 DEVELOPMENT



This plan in **NOT** a Disclosure Plan as setout in the Land Sales Act 1984 and is for General Information Only.

LEGEND

- LEGEND
- Final surface contours based on A.H.D datum at an interval of 1.0m, shown as: —24.0—
- Natural surface contours in undisturbed areas at an interval of 1.0m shown: —24.0—
- Easement for Services and/or Access
- EMT
- Earthworks Batter
- Kerb/Kerb & Channel
- Drainage Line
- Drainage Pit
- Drainage Gully Pit
- Drainage MH
- Drainage Pit & Soakage Trench
- Water Line
- Water Conduit
- Water Service Point of Entry
- Water Stop Valve
- Fire Hydrant
- Underground Comms
- Comms Pit
- Underground Electricity
- Elec Box/Pit
- Street Light
- Indicative Driveway location
- Building Envelope
- In accordance with Approved Building Envelope Plan 7081 P06 BE A 14/10/2015 by Saunders Havill Group
- Q100 Flood Area
- State Protected Vegetation
- Area B12 shown on Technical Agency Response (Vegetation) Plan (TARP) 1806-6074 SPD 27/8/2018.
- No built structure, other than fences, roads & underground services is to be established, constructed, or located within this Area.

IMPORTANT NOTES:

This plan has been prepared for PEET Pty Ltd for the purposes of Discussion only.
 All areas and dimensions are subject to final survey and relevant authority approval.
 Location of sewer, rootwater, stormwater, water reticulation, electricity and communication lines, manholes and pits, streetscaping, banks, batters, retaining walls, fencing, footpaths & building envelopes are as shown on engineering design drawings, supplied by KN Group Pty Ltd Consulting Engineers and may differ from the as constructed location. Levels and Contours shown are not to be used for building design or construction. A site survey is required.
 For final building requirements the relevant approved Plan of Development prevail over this site plan.
 These notes form an integral part of this plan and no part of this plan may be reproduced in whole or in part without these notes.

AMENDMENTS

A	DESCRIPTION	DATE
1	Lots 1523, 1524, 1561, 1562, 1563, 1568 & 1569 mod.	23.7.19
	Electrical and communication services added.	23.7.19

SCHLECKER SURVEYING (QLD)

Gold Coast ♦ Brisbane ♦
 Consultants in Surveying,
 Mapping & Development



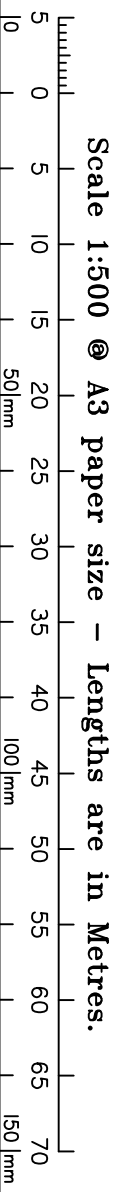
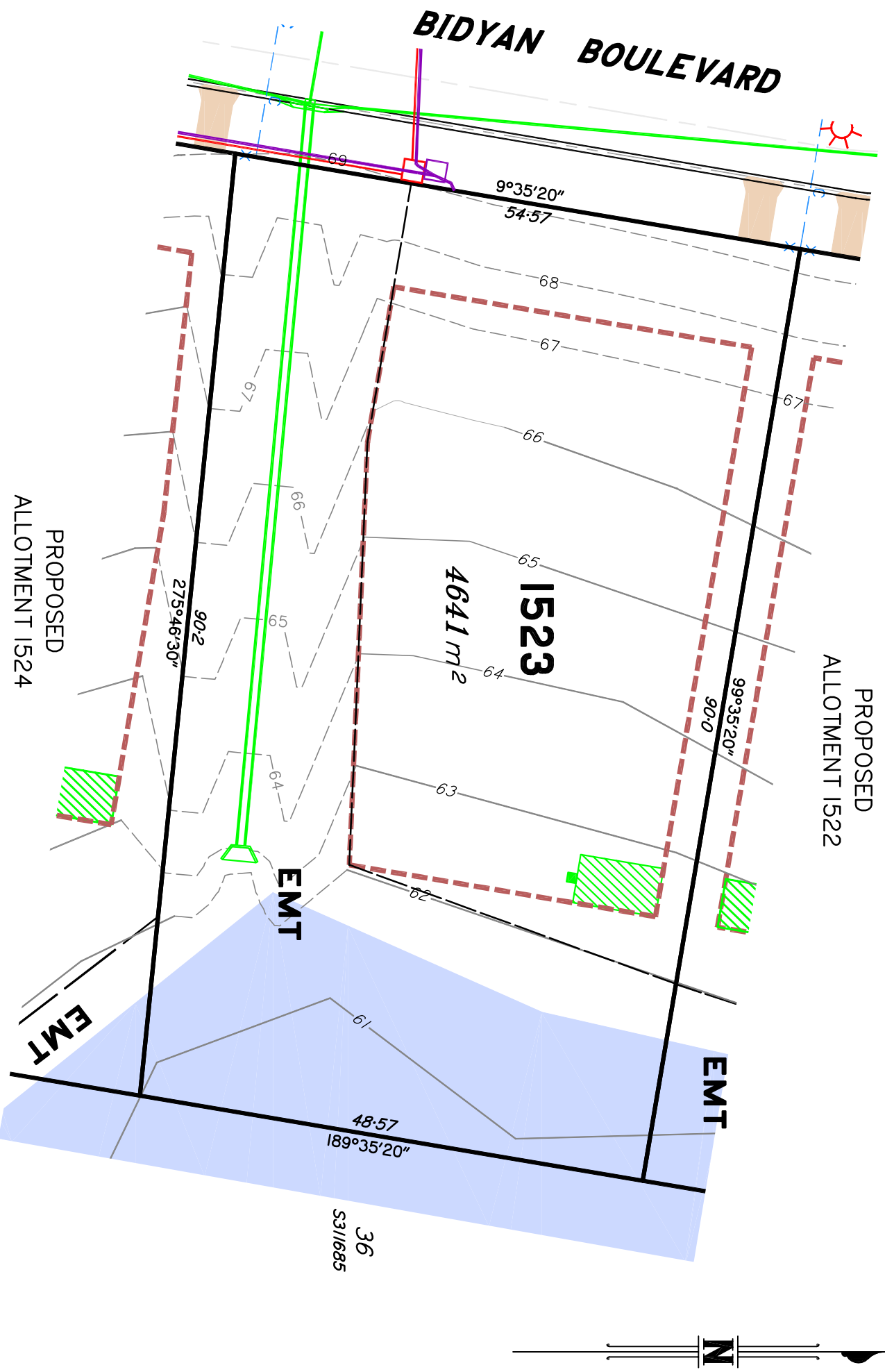
A.B.N. 36 909 833 411
 PO Box 41, Helensvale QLD 4212.
 Site 206,
 Helensvale Professional Centre
 3 St. John Overall Dr., Helensvale QLD 4212.
 P.H.: (07) 5573 6744
 Fax: (07) 5573 6755
 Mob.: 0413 945 959
 EMAIL: mail@schlecker.com.au

SCALE @ A3 **1:500** DWG. NO. **15159-494-1522**

Preliminary

SITE PLAN

FOR PROPOSED LOT 1523
SPRING MOUNTAIN STAGE 15B



This plan in **NOT** a Disclosure Plan as setout in the Land Sales Act 1984 and is for General Information Only.

LEGEND

- LEGEND
- Final surface contours based on A.H.D datum at an interval of 1.0m, shown as: —24.0—
- Natural surface contours in undisturbed areas at an interval of 1.0m shown: —24.0—
- Easement for Services and/or Access
- EMT
- Earthworks Batter
- Kerb/Kerb & Channel
- Drainage Line
- Drainage Pit
- Drainage Gully Pit
- Drainage MH
- Drainage Pit & Soakage Trench
- Water Line
- Water Conduit
- Water Service Point of Entry
- Water Stop Valve
- Fire Hydrant
- Underground Comms
- Comms Pit
- Underground Electricity
- Elec Box/Pit
- Street Light
- Indicative Driveway location
- Building Envelope
- In accordance with Approved Building Envelope Plan 7081 P06 BE A 14/10/2015 by Saunders Havill Group
- Q100 Flood Area
- State Protected Vegetation
- Area B12 shown on Technical Agency Response (Vegetation) Plan (TARP) 1806-6074 SPD 27/8/2018.
- No built structure, other than fences, roads & underground services is to be established, constructed, or located within this Area.

IMPORTANT NOTES:

This plan has been prepared for PEET Pty Ltd for the purposes of Discussion only.
 All areas and dimensions are subject to final survey and relevant authority approval.
 Location of sewer, roofwater, stormwater, water reticulation, electricity and communication lines, manholes and pits, streetscaping, banks, batters, retaining walls, fencing, footpaths & building envelopes are as shown on engineering design drawings, supplied by KN Group Pty Ltd Consulting Engineers and may differ from the as constructed location. Levels and Contours shown are not to be used for building design or construction. A site survey is required.
 For final building requirements the relevant approved Plan of Development prevail over this site plan.
 These notes form an integral part of this plan and no part of this plan may be reproduced in whole or in part without these notes.

AMENDMENTS

A	DESCRIPTION	DATE
1	Lots 1523, 1524, 1561, 1562, 1563, 1568 & 1569 mod.	23.7.19
	Electrical and communication services added.	23.7.19

SCHLECKER SURVEYING (QLD)

Gold Coast ♦ Brisbane ♦
 Consultants in Surveying,
 Mapping & Development



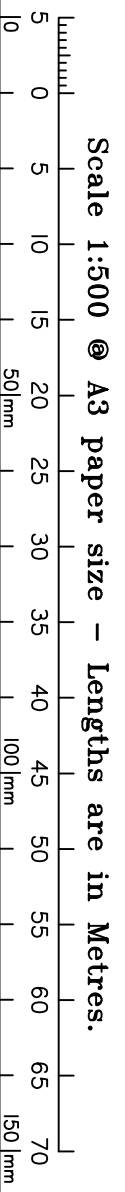
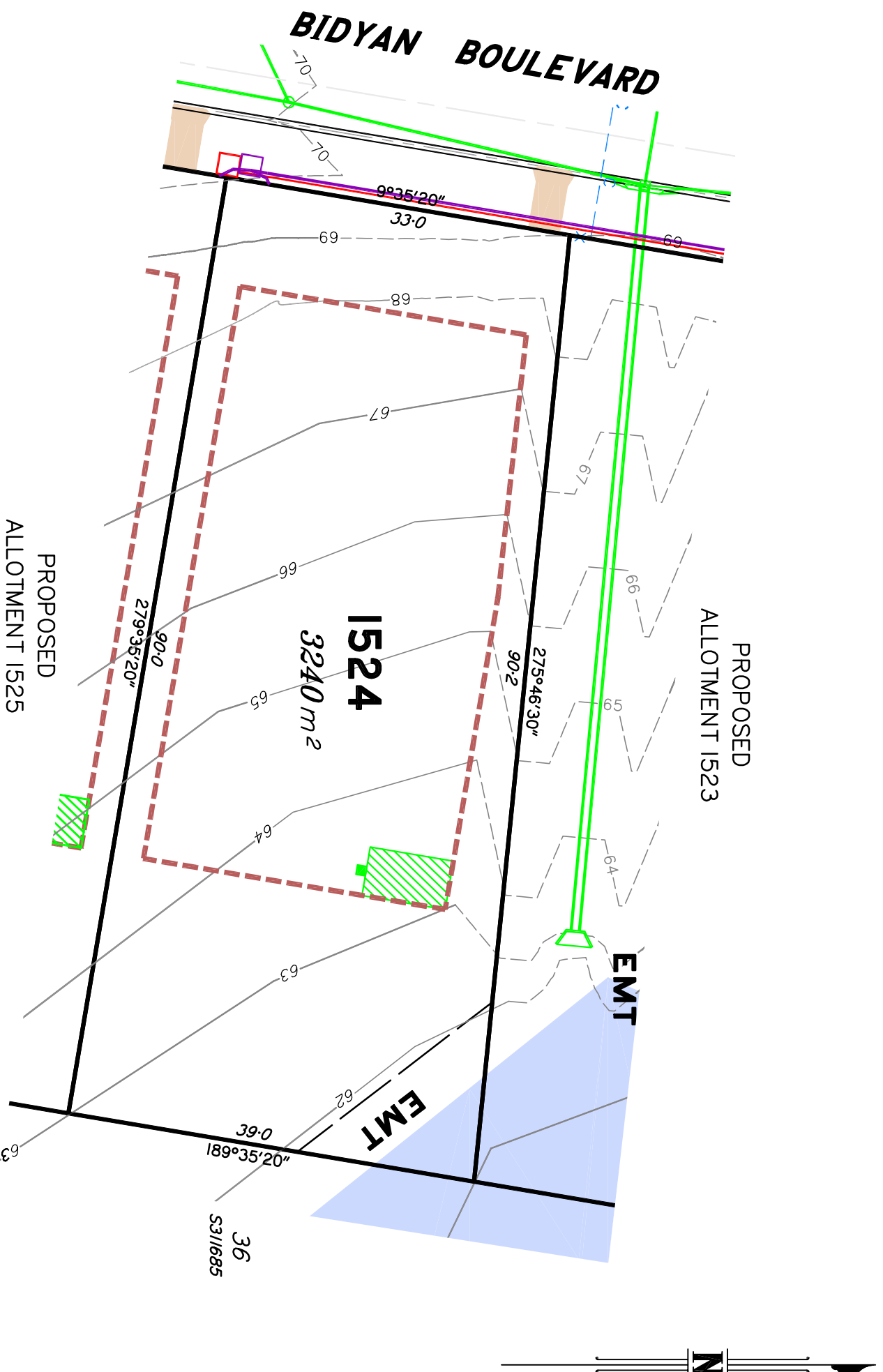
ABN: 36 909 833 411
 PO Box 41, Helensvale QLD 4212

Site 206,
 Helensvale Professional Centre
 3 St John Overall Dr., Helensvale QLD 4212.

Ph: (07) 5573 6744
 Fax: (07) 5573 6755
 Mob: 0413 945 959
 EMAIL: mail@schlecker.com.au

SCALE @ A3 **1:500** DWG. NO. **15159-49A-1523**

Preliminary
SITE PLAN
 FOR PROPOSED LOT 1524
SPRING MOUNTAIN STAGE 15B



This plan in **NOT** a Disclosure Plan as setout in the Land Sales Act 1984 and is for General Information Only.

LEGEND

- LEGEND
- Final surface contours based on A.H.D datum at an interval of 1.0m, shown as: —24.0—
- Natural surface contours in undisturbed areas at an interval of 1.0m shown: —24.0—
- Easement for Services and/or Access
- EMT
- Earthworks Batter
- Kerb/Kerb & Channel
- Drainage Line
- Drainage Pit
- Drainage Gully Pit
- Drainage MH
- Drainage Pit & Soakage Trench
- Water Line
- Water Conduit
- Water Service Point of Entry
- Water Stop Valve
- Fire Hydrant
- Underground Comms
- Comms Pit
- Underground Electricity
- Elec Box/Pit
- Street Light
- Indicative Driveway location
- Building Envelope
- In accordance with Approved Building Envelope Plan 7081 P06 BE A 14/10/2015 by Saunders Havill Group
- Q100 Flood Area
- State Protected Vegetation
- Area B12 shown on Technical Agency Response (Vegetation) Plan (TARIP) 1806-6074 SPD 27/8/2018.
- No built structure, other than fences, roads & underground services is to be established, constructed, or located within this Area.

IMPORTANT NOTES:

This plan has been prepared for PEET Pty Ltd for the purposes of Discussion only.
 All areas and dimensions are subject to final survey and relevant authority approval.
 Location of sewer, rootwater, stormwater, water reticulation, electricity and communication lines, manholes and pits, streetscaping, banks, batters, retaining walls, fencing, footpaths & building envelopes are as shown on engineering design drawings, supplied by KN Group Pty Ltd Consulting Engineers and may differ from the as constructed location. Levels and Contours shown are not to be used for building design or construction. A site survey is required.
 For final building requirements the relevant approved Plan of Development prevail over this site plan.
 These notes form an integral part of this plan and no part of this plan may be reproduced in whole or in part without these notes.

AMENDMENTS

NO	DESCRIPTION	DATE
A	Lots 1523, 1524, 1561, 1562, 1563, 1568 & 1569 mod. <i>Electrical and communication services added.</i>	23.7.19 23.7.19

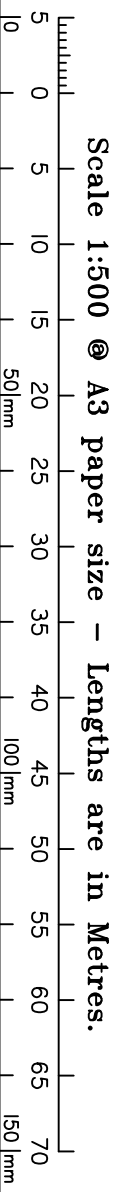
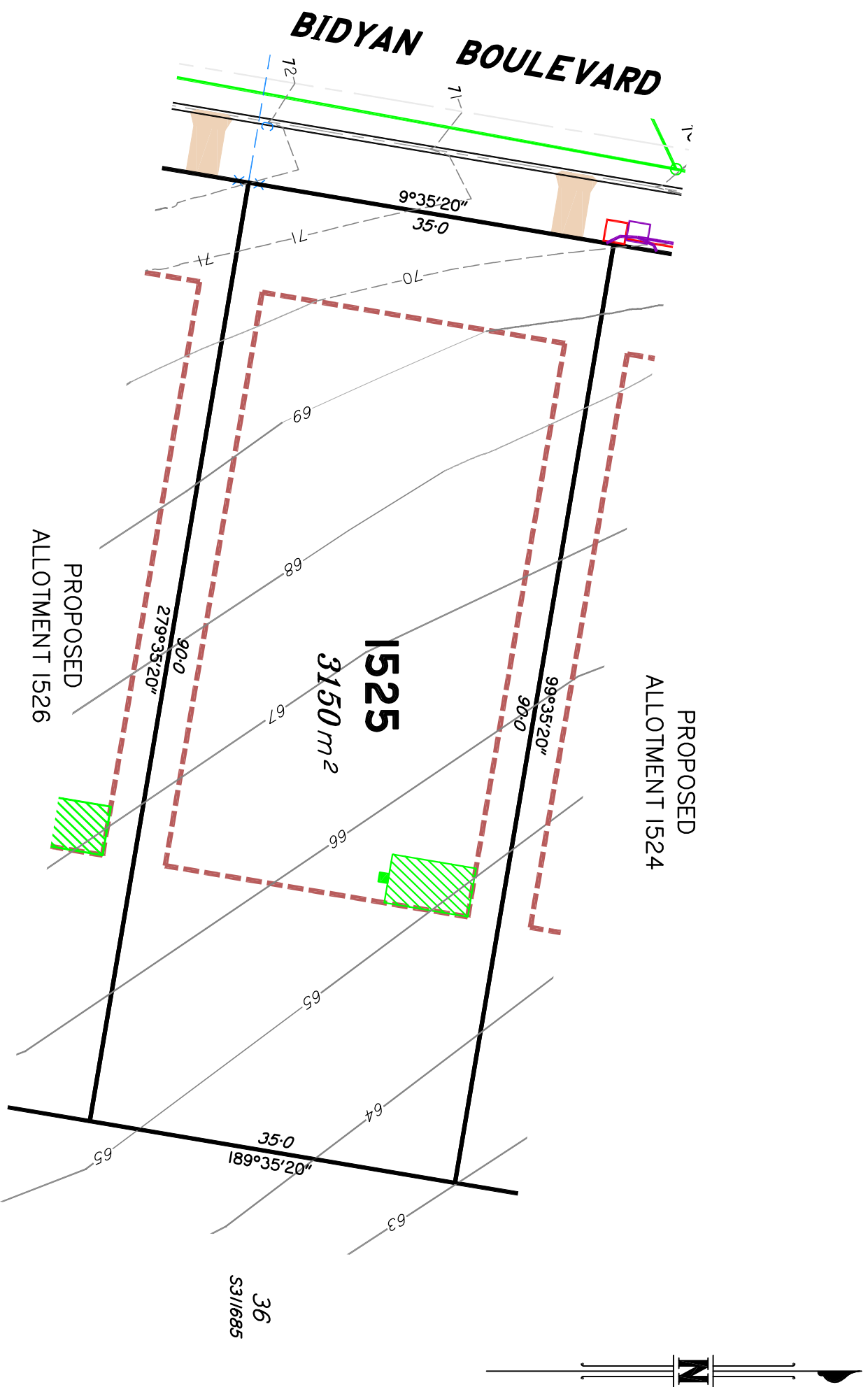
SCHLECKER SURVEYING (QLD)

Gold Coast ♦ Brisbane ♦
 Consultants in Surveying,
 Mapping & Development



A.B.N. 36 909 833 411
 PO Box 41, Helensvale QLD 4212.
 Site 206,
 Helensvale Professional Centre
 3 St. John Overall Dr., Helensvale QLD 4212.
 P/n: (07) 5573 6744
 Fax: (07) 5573 6755
 Mob: 0413 945 959
 EMAIL: mail@schlecker.com.au

Preliminary
SITE PLAN
 FOR PROPOSED LOT 1525
SPRING MOUNTAIN STAGE 15B



This plan in **NOT** a Disclosure Plan as setout in the Land Sales Act 1984 and is for General Information Only.

LEGEND

- LEGEND
- Final surface contours based on A.H.D datum at an interval of 1.0m, shown as: —24.0—
- Natural surface contours in undisturbed areas at an interval of 1.0m shown: —24.0—
- Easement for Services and/or Access
- EMT
- Earthworks Batter
- Kerb/Kerb & Channel
- Drainage Line
- Drainage Pit
- Drainage Gully Pit
- Drainage MH
- Drainage Pit & Soakage Trench
- Water Line
- Water Conduit
- Water Service Point of Entry
- Water Stop Valve
- Fire Hydrant
- Underground Comms
- Comms Pit
- Underground Electricity
- Elec Box/Pit
- Street Light
- Indicative Driveway location
- Building Envelope
- In accordance with Approved Building Envelope Plan 7081 P06 BE A 14/10/2015 by Saunders Havill Group
- Q100 Flood Area
- State Protected Vegetation
- Area B12 shown on Technical Agency Response (Vegetation) Plan (TARP) 1806-6074 SPD 27/8/2018.
- No built structure, other than fences, roads & underground services is to be established, constructed, or located within this Area.

IMPORTANT NOTES:

This plan has been prepared for PEET Pty Ltd for the purposes of Discussion only.
 All areas and dimensions are subject to final survey and relevant authority approval.
 Location of sewer, rootwater, stormwater, water reticulation, electricity and communication lines, manholes and pits, streetscaping, banks, batters, retaining walls, fencing, footpaths & building envelopes are as shown on engineering design drawings, supplied by KN Group Pty Ltd Consulting Engineers and may differ from the as constructed location. Levels and Contours shown are not to be used for building design or construction. A site survey is required.
 For final building requirements the relevant approved Plan of Development prevail over this site plan.
 These notes form an integral part of this plan and no part of this plan may be reproduced in whole or in part without these notes.

AMENDMENTS

NO	DESCRIPTION	DATE
A	Lots 1523, 1524, 1561, 1562, 1563, 1568 & 1569 mod. <i>Electrical and communication services added.</i>	23.7.19 23.7.19

SCHLECKER SURVEYING (QLD)

Gold Coast ♦ Brisbane ♦
 Consultants in Surveying,
 Mapping & Development



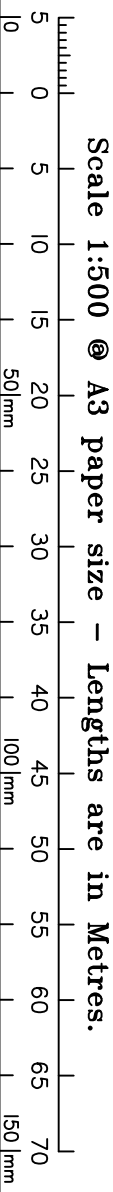
ABN: 36 909 833 411
 PO Box 41, Helensvale QLD 4212
 Site 206,
 Helensvale Professional Centre
 3 St. John Overall Dr., Helensvale QLD 4212.
 P/n: (07) 5573 6744
 F/n: (07) 5573 6755
 M/n: 0413 945 959
 E/M: mail@schlecker.com.au

SCALE @ A3 **1:500** DWG. NO. **15159-49A-1525**

Preliminary

SITE PLAN

FOR PROPOSED LOT 1526
SPRING MOUNTAIN STAGE 15B



This plan in **NOT** a Disclosure Plan as setout in the Land Sales Act 1984 and is for General Information Only.

LEGEND

- LEGEND
- Final surface contours based on A.H.D datum at an interval of 1.0m, shown as: —24.0—
- Natural surface contours in undisturbed areas at an interval of 1.0m shown: —24.0—
- Easement for Services and/or Access
- Earthworks Batter
- Kerb/Kerb & Channel
- Drainage Line
- Drainage Pit
- Drainage Gully Pit
- Drainage MH
- Drainage Pit & Soakage Trench
- Water Line
- Water Conduit
- Water Service Point of Entry
- Water Stop Valve
- Fire Hydrant
- Underground Comms
- Comms Pit
- Underground Electricity
- Elec Box/Pit
- Street Light
- Indicative Driveway location
- Building Envelope
- In accordance with Approved Building Envelope Plan 7081 P06 BE A 14/10/2015 by Saunders Havill Group
- Q100 Flood Area
- State Protected Vegetation
- Area B12 shown on Technical Agency Response (Vegetation) Plan (TRAP) 1806-6074 SPD 27/8/2018.
- No built structure, other than fences, roads & underground services is to be established, constructed, or located within this Area.

IMPORTANT NOTES:

This plan has been prepared for PEET Pty Ltd for the purposes of Discussion only.
All areas and dimensions are subject to final survey and relevant authority approval.
Location of sewer, rootwater, stormwater, water reticulation, electricity and communication lines, manholes and pits, streetscaping, banks, batters, retaining walls, fencing, footpaths & building envelopes are as shown on engineering design drawings, supplied by KN Group Pty Ltd Consulting Engineers and may differ from the as constructed location. Levels and Contours shown are not to be used for building design or construction. A site survey is required.
For final building requirements the relevant approved Plan of Development prevail over this site plan.
These notes form an integral part of this plan and no part of this plan may be reproduced in whole or in part without these notes.

AMENDMENTS

A	DESCRIPTION	DATE
1	Lots 1523, 1524, 1561, 1562, 1563, 1568 & 1569 mod.	23.7.19
	Electrical and communication services added.	23.7.19

SCHLECKER SURVEYING (QLD)

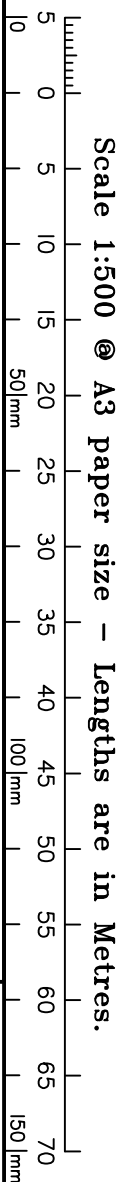
Gold Coast ♦ Brisbane ♦
Consultants in Surveying,
Mapping & Development



ABN: 36 909 833 411
PO Box 41, Helensvale QLD 4212.
Site 206,
Helensvale Professional Centre
351 John Overall Dr., Helensvale QLD 4212.
P/n: (07) 5573 6744
F/n: (07) 5573 6755
M/n: 0413 945 959
EMAIL: mail@schlecker.com.au

SCALE @ A3 1:500 DWG. NO. 15/159-49A-1526

Preliminary
SITE PLAN
 FOR PROPOSED LOT 1555
SPRING MOUNTAIN
 STAGE 15B



This plan in **NOT** a Disclosure Plan as setout in the Land Sales Act 1984 and is for General Information Only.



LEGEND

- LEGEND**
 Final surface contours based on A.H.D datum at an interval of 1.0m, shown as: —24.0—
 Natural surface contours in undisturbed areas at an interval of 1.0m shown: —24.0—
 Easement for Services and/or Access
 Earthworks Batter
 Kerb/Kerb & Channel
 Drainage Line
 Drainage Pit
 Drainage Gully Pit
 Drainage MH
 Drainage Pit & Soakage Trench
 Water Line
 Water Conduit
 Water Service Point of Entry
 Water Stop Valve
 Fire Hydrant
 Underground Comms
 Comms Pit
 Underground Electricity
 Elec Box/Pit
 Street Light
 Indicative Driveway location
 Building Envelope
 In accordance with Approved Building Envelope Plan 7081 P06 BE A 14/10/2015 by Saunders Havill Group
 Q100 Flood Area
 State Protected Vegetation
 Area B12 shown on Technical Agency Response (Vegetation) Plan (TARP) 1806-6074 SPD 27/8/2018.
 No built structure, other than fences, roads & underground services is to be established, constructed, or located within this Area.
-

IMPORTANT NOTES:

This plan has been prepared for PEET Pty Ltd for the purposes of Discussion only.
 All areas and dimensions are subject to final survey and relevant authority approval.
 Location of sewer, roofwater, stormwater, water reticulation, electricity and communication lines, manholes and pits, streetscaping, banks, batters, retaining walls, fencing, footpaths & building envelopes are as shown on engineering design drawings, supplied by KN Group Pty Ltd Consulting Engineers and may differ from the as constructed location. Levels and Contours shown are not to be used for building design or construction. A site survey is required.
 For final building requirements the relevant approved Plan of Development prevail over this site plan.
 These notes form an integral part of this plan and no part of this plan may be reproduced in whole or in part without these notes.

AMENDMENTS

A	DESCRIPTION	DATE
1	Lots 1523, 1524, 1561, 1562, 1563, 1568 & 1569 mod. <i>Electrical and communication services added.</i>	23.7.19 23.7.19

SCHLECKER SURVEYING (QLD)

Gold Coast ♦ Brisbane ♦
 Consultants in Surveying,
 Mapping & Development

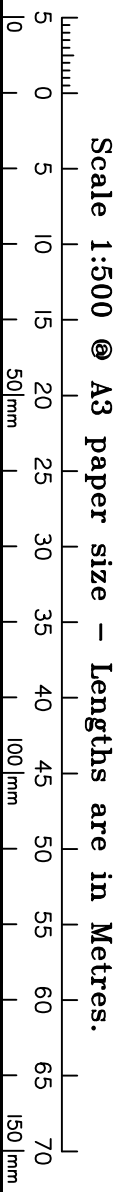


ABN: 36 909 833 411
 PO Box 41, Helensvale QLD 4212.
 Site 206,
 Helensvale Professional Centre
 3 St John Overall Dr., Helensvale QLD 4212.

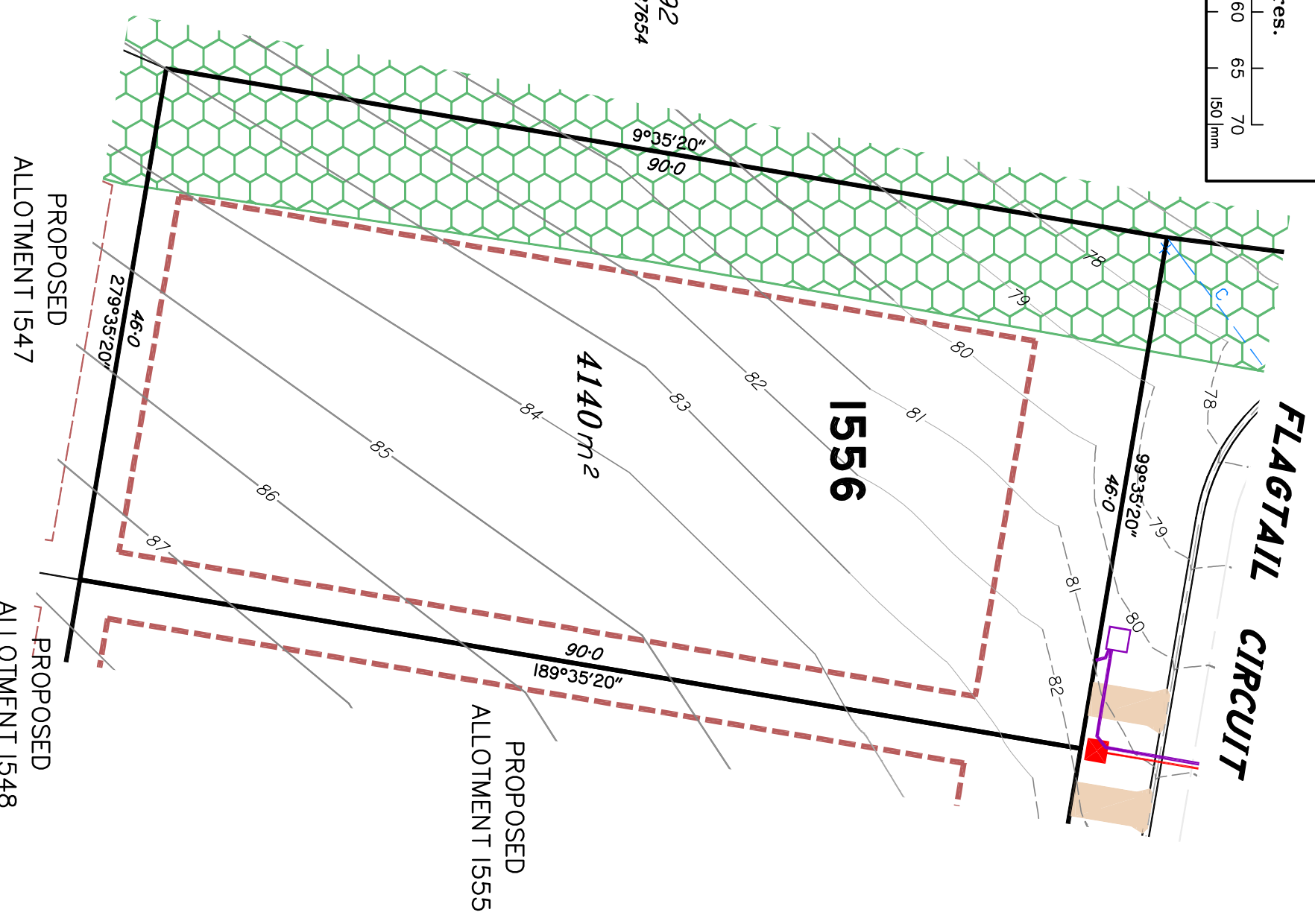
Ph: (07) 5573 6744
 Fax: (07) 5573 6755
 Mod: 0413 945 959
 EMAIL: mail@ssurveys.au

SCALE @ A3 **1:500** DWG. NO. **15159-49A-1555**

Preliminary
SITE PLAN
 FOR PROPOSED LOT 1556
SPRING MOUNTAIN
 STAGE 15B



This plan in **NOT** a Disclosure Plan as setout in the Land Sales Act 1984 and is for General Information Only.



LEGEND

- LEGEND
- Final surface contours based on A.H.D datum at an interval of 1.0m, shown as: —24.0—
- Natural surface contours in undisturbed areas at an interval of 1.0m shown: —24.0—
- Easement for Services and/or Access
- EMT
- Earthworks Batter
- Kerb/Kerb & Channel
- Drainage Line
- Drainage Pit
- Drainage Gully Pit
- Drainage MH
- Drainage Pit & Soakage Trench
- Water Line
- Water Conduit
- Water Service Point of Entry
- Water Stop Valve
- Fire Hydrant
- Underground Comms
- Comms Pit
- Underground Electricity
- Elec Box/Pit
- Street Light
- Indicative Driveway location
- Building Envelope
- In accordance with Approved Building Envelope Plan 7081 P06 BE A 14/10/2015 by Saunders Havill Group
- Q100 Flood Area
- State Protected Vegetation
- Area B12 shown on Technical Agency Response (Vegetation) Plan (TARP) 1806-6074 SPD 27/8/2018.
- No built structure, other than fences, roads & underground services is to be established, constructed, or located within this Area.

IMPORTANT NOTES:

This plan has been prepared for PEET Pty Ltd for the purposes of Discussion only.
 All areas and dimensions are subject to final survey and relevant authority approval.
 Location of sewer, rootwater, stormwater, water reticulation, electricity and communication lines, manholes and pits, streetscaping, banks, batters, retaining walls, fencing, footpaths & building envelopes are as shown on engineering design drawings, supplied by KN Group Pty Ltd Consulting Engineers and may differ from the as constructed location. Levels and Contours shown are not to be used for building design or construction. A site survey is required.
 For final building requirements the relevant approved Plan of Development prevail over this site plan.
 These notes form an integral part of this plan and no part of this plan may be reproduced in whole or in part without these notes.

AMENDMENTS

A	DESCRIPTION	DATE
1	Lots 1523, 1524, 1561, 1562, 1563, 1568 & 1569 mod.	23.7.19
	Electrical and communication services added.	23.7.19

SCHLENGER SURVEYING (QLD)

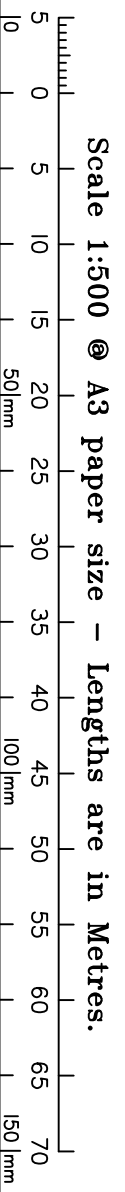
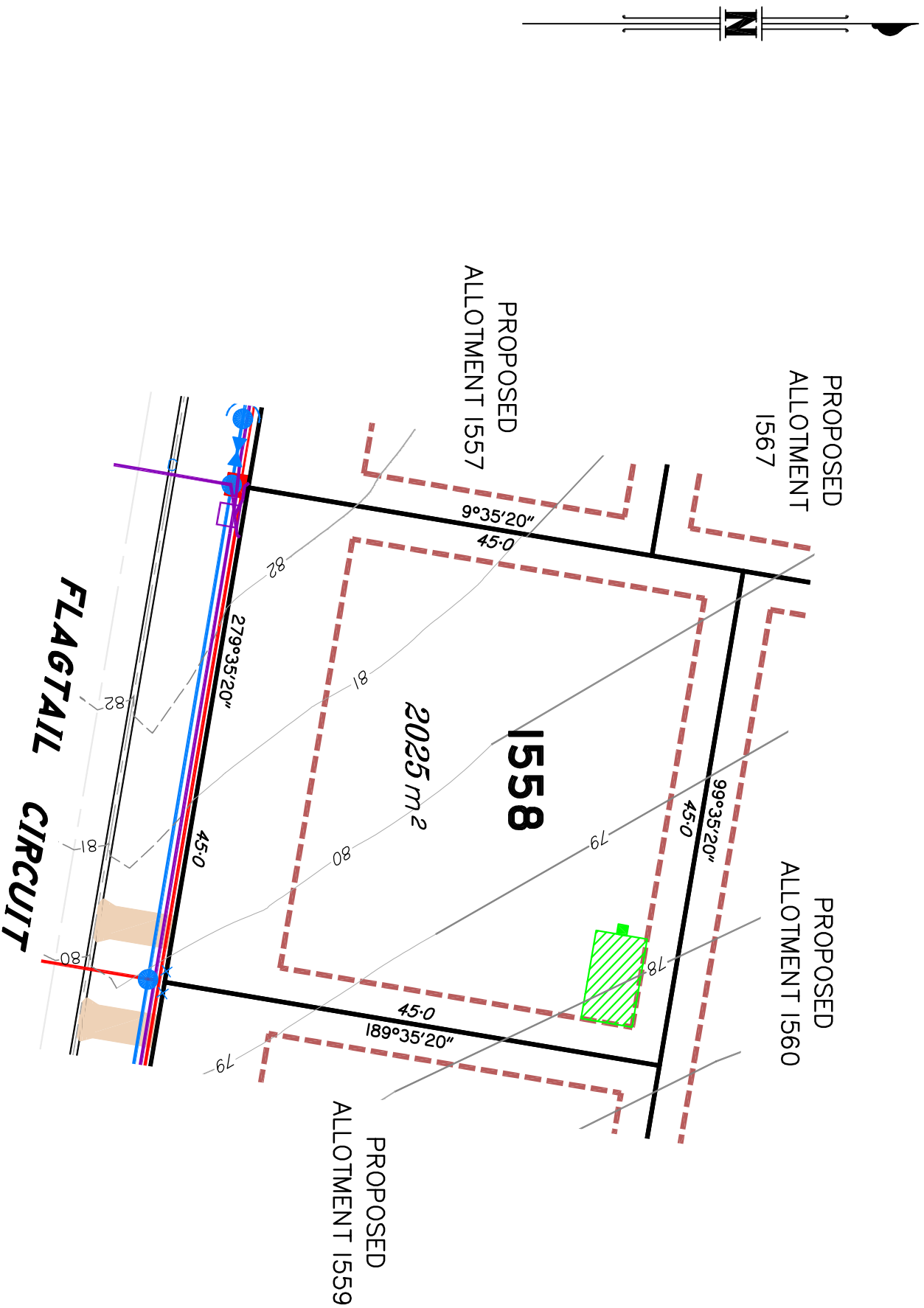
Gold Coast ♦ Brisbane ♦
 Consultants in Surveying,
 Mapping & Development



A.B.N. 36 909 833 411
 PO Box 41, Helensvale QLD 4212.
 Site 206,
 Helensvale Professional Centre
 3 St. John Overall Dr., Helensvale QLD 4212.
 P.h.: (07) 5573 6744
 Fax: (07) 5573 6755
 Mob.: 0413 945 959
 EMAIL: mail@schlenger.com.au

SCALE @ A3 **1:500** DWG. NO. **15/59-49A-1556**

Preliminary
SITE PLAN
 FOR PROPOSED LOT 1558
SPRING MOUNTAIN STAGE 15B



This plan in **NOT** a Disclosure Plan as setout in the Land Sales Act 1984 and is for General Information Only.

LEGEND

- LEGEND
- Final surface contours based on A.H.D datum at an interval of 1.0m, shown as: 24.0
- Natural surface contours in undisturbed areas at an interval of 1.0m shown: 24.0
- Easement for Services and/or Access
- Earthworks Batter
- Kerb/Kerb & Channel
- Drainage Line
- Drainage Pit
- Drainage Gully Pit
- Drainage MH
- Drainage Pit & Soakage Trench
- Water Line
- Water Conduit
- Water Service Point of Entry
- Water Stop Valve
- Fire Hydrant
- Underground Comms
- Comms Pit
- Underground Electricity
- Elec Box/Pit
- Street Light
- Indicative Driveway location
- Building Envelope
- In accordance with Approved Building Envelope Plan 7081 P06 BE A 14/10/2015 by Saunders Havill Group
- Q100 Flood Area
- State Protected Vegetation
- Area B12 shown on Technical Agency Response (Vegetation) Plan (TRAP) 1806-6074 SPD 27/8/2018. No built structure, other than fences, roads & underground services is to be established, constructed, or located within this Area.

IMPORTANT NOTES:

This plan has been prepared for PEET Pty Ltd for the purposes of Discussion only.
 All areas and dimensions are subject to final survey and relevant authority approval.
 Location of sewer, roofwater, stormwater, water reticulation, electricity and communication lines, manholes and pits, streetscaping, banks, batters, retaining walls, fencing, footpaths & building envelopes are as shown on engineering design drawings, supplied by KN Group Pty Ltd Consulting Engineers and may differ from the as constructed location. Levels and Contours shown are not to be used for building design or construction. A site survey is required.
 For final building requirements the relevant approved Plan of Development prevail over this site plan.
 These notes form an integral part of this plan and no part of this plan may be reproduced in whole or in part without these notes.

AMENDMENTS

A	DESCRIPTION	DATE
1	Lots 1523, 1524, 1561, 1562, 1563, 1568 & 1569 mod.	23.7.19
	Electrical and communication services added.	23.7.19

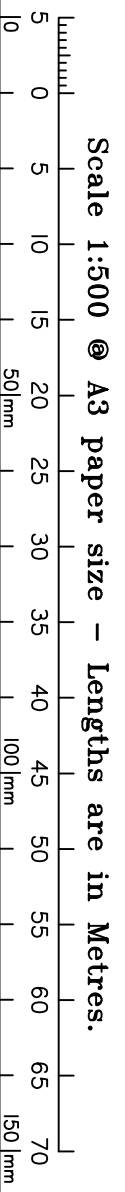
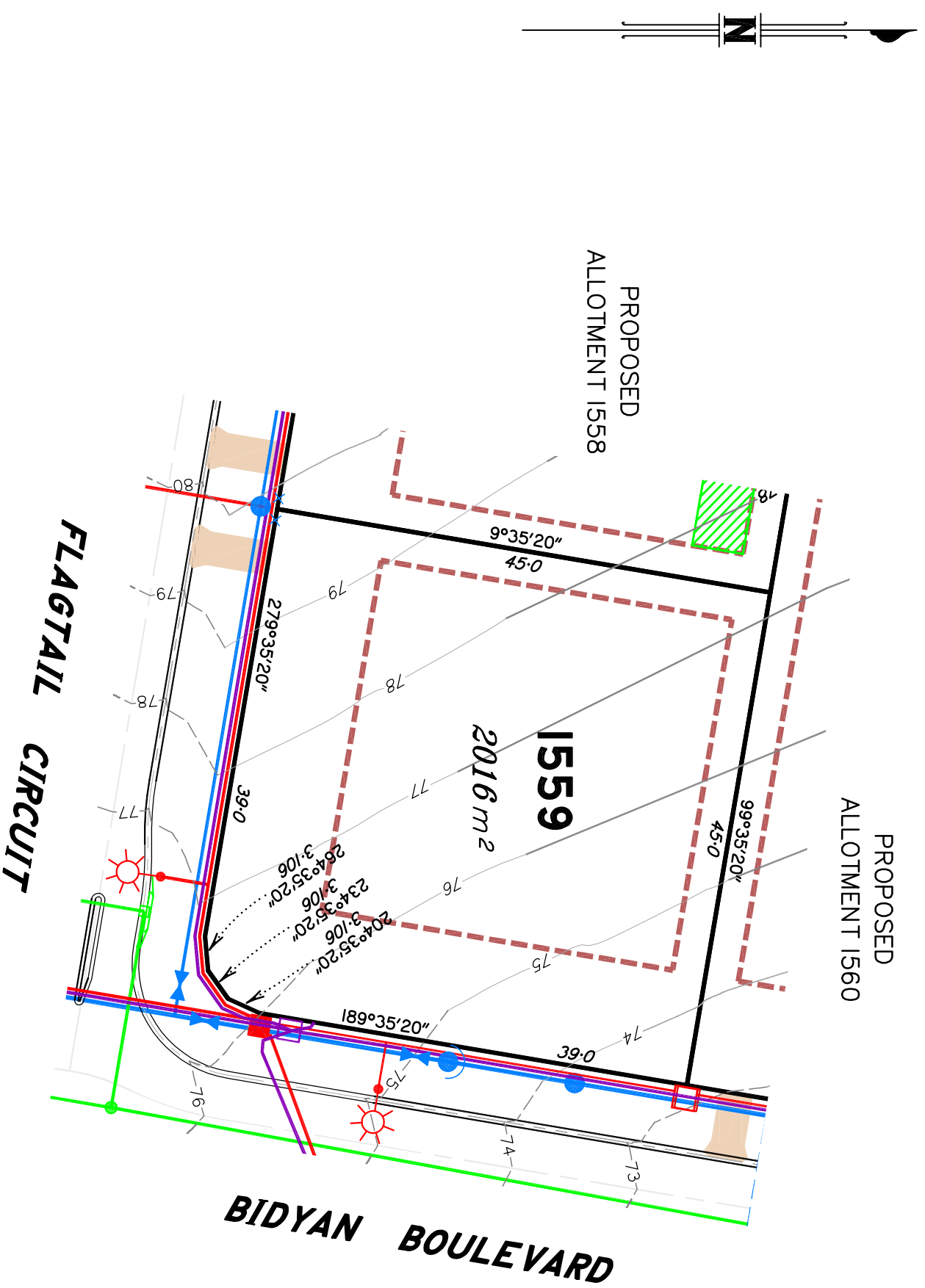
SCHLENGER SURVEYING (QLD)

Gold Coast ♦ Brisbane ♦
 Consultants in Surveying,
 Mapping & Development



A.B.N. 36 909 833 411
 PO Box 41, Helensvale QLD 4212.
 Site 206,
 Helensvale Professional Centre
 Helensvale QLD 4212.
 3/51 John Overall Dr., Helensvale QLD 4212.
 P.h.: (07) 5573 6744
 F.h.: (07) 5573 6755
 M.h.: 0413 945 959
 E.M.A.I.L.: mail@schlenger.com.au
SCALE @ A3 1:500 **DWG. NO. 15159-49A-1558**

Preliminary
SITE PLAN
 FOR PROPOSED LOT 1559
SPRING MOUNTAIN STAGE 15B



This plan in **NOT** a Disclosure Plan as setout in the Land Sales Act 1984 and is for General Information Only.

LEGEND

- LEGEND**
- Final surface contours based on A.H.D datum at an interval of 1.0m, shown as: 24.0
- Natural surface contours in undisturbed areas at an interval of 1.0m shown: 24.0
- Easement for Services and/or Access
- Earthworks Batter
- Kerb/Kerb & Channel
- Drainage Line
- Drainage Pit
- Drainage Gully Pit
- Drainage MH
- Drainage Pit & Soakage Trench
- Water Line
- Water Conduit
- Water Service Point of Entry
- Water Stop Valve
- Fire Hydrant
- Underground Comms
- Comms Pit
- Underground Electricity
- Elec Box/Pit
- Street Light
- Indicative Driveway location
- Building Envelope
- In accordance with Approved Building Envelope Plan 7081 P06 BE A 14/10/2015 by Saunders Havill Group
- Q100 Flood Area
- State Protected Vegetation
- Area B12 shown on Technical Agency Response (Vegetation) Plan (TARP) 1806-6074 SPD 27/8/2018. No built structure, other than fences, roads & underground services is to be established, constructed, or located within this Area.

IMPORTANT NOTES:

This plan has been prepared for PEET Pty Ltd for the purposes of Discussion only.
 All areas and dimensions are subject to final survey and relevant authority approval.
 Location of sewer, rootwater, stormwater, water reticulation, electricity and communication lines, manholes and pits, streetscaping, banks, batters, retaining walls, fencing, footpaths & building envelopes are as shown on engineering design drawings, supplied by KN Group Pty Ltd Consulting Engineers and may differ from the as constructed location. Levels and Contours shown are not to be used for building design or construction. A site survey is required.
 For final building requirements the relevant approved Plan of Development prevail over this site plan.
 These notes form an integral part of this plan and no part of this plan may be reproduced in whole or in part without these notes.

AMENDMENTS

A	DESCRIPTION	DATE
1	Lots 1523, 1524, 1561, 1562, 1563, 1568 & 1569 mod.	23.7.19
	Electrical and communication services added.	23.7.19

SCHLENGER SURVEYING (QLD)

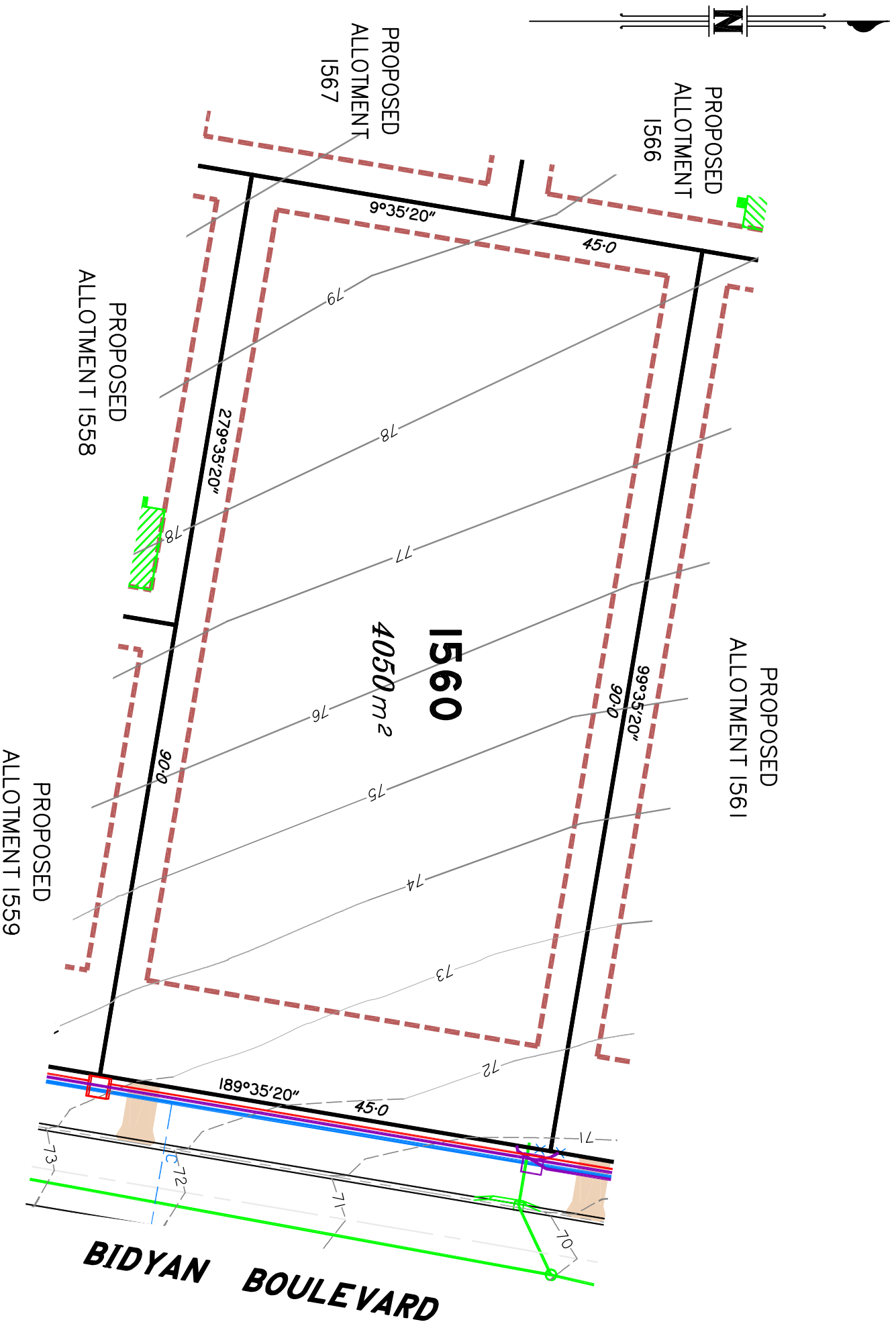
Gold Coast ♦ Brisbane ♦
 Consultants in Surveying,
 Mapping & Development



ABN: 36 909 833 411
 PO Box 41, Helensvale QLD 4212.
 Site 206,
 Helensvale Professional Centre
 3 St John Overall Dr., Helensvale QLD 4212.
 P/n: (07) 5573 6744
 F/n: (07) 5573 6755
 M/n: 0413 945 959
 EMAIL: mail@schlenger.com.au

SCALE @ A3 **1:500** DWG. NO. **15/59-49A-1559**

Preliminary
SITE PLAN
 FOR PROPOSED LOT 1560
SPRING MOUNTAIN STAGE 15B



LEGEND

- LEGEND**
 Final surface contours based on A.H.D datum at an interval of 1.0m, shown as: —24.0—
 Natural surface contours in undisturbed areas at an interval of 1.0m shown: —24.0—
 Easement for Services and/or Access EMT
 Earthworks Batter
 Kerb/Kerb & Channel
 Drainage Line
 Drainage Pit
 Drainage Gully Pit
 Drainage MH
 Drainage Pit & Soakage Trench
 Water Line
 Water Conduit
 Water Service Point of Entry
 Water Stop Valve
 Fire Hydrant
 Underground Comms
 Comms Pit
 Underground Electricity
 Elec Box/Pit
 Street Light
 Indicative Driveway location
 Building Envelope
 In accordance with Approved Building Envelope Plan 7081 P06 BE A 14/10/2015 by Saunders Havill Group
 Q100 Flood Area
 State Protected Vegetation
 Area B12 shown on Technical Agency Response (Vegetation) Plan (TARP) 1806-6074 SPD 27/8/2018.
 No built structure, other than fences, roads & underground services is to be established, constructed, or located within this Area.

IMPORTANT NOTES:

This plan has been prepared for PEET Pty Ltd for the purposes of Discussion only.
 All areas and dimensions are subject to final survey and relevant authority approval.
 Location of sewer, rootwater, stormwater, water reticulation, electricity and communication lines, manholes and pits, streetscaping, banks, batters, retaining walls, fencing, footpaths & building envelopes are as shown on engineering design drawings, supplied by KN Group Pty Ltd Consulting Engineers and may differ from the as constructed location. Levels and Contours shown are not to be used for building design or construction. A site survey is required.
 For final building requirements the relevant approved Plan of Development prevail over this site plan.
 These notes form an integral part of this plan and no part of this plan may be reproduced in whole or in part without these notes.

AMENDMENTS

NO	DESCRIPTION	DATE
A	Lots 1523, 1524, 1561, 1562, 1563, 1568 & 1569 mod. <i>Electrical and communication services added.</i>	23.7.19 23.7.19

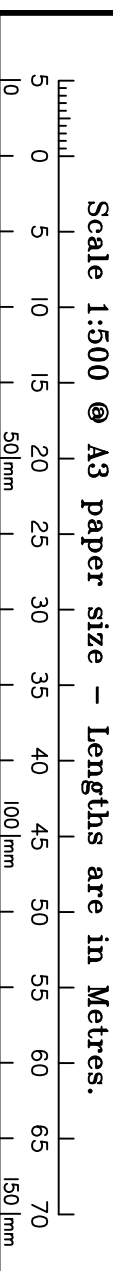
SCHLECKER SURVEYING (QLD)

Gold Coast ♦ Brisbane ♦
 Consultants in Surveying,
 Mapping & Development

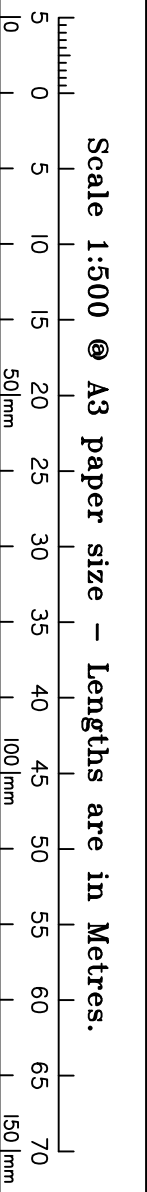


ABN: 36 909 833 411
 PO Box 41, Helensvale QLD 4212
 Site 206,
 Helensvale Professional Centre
 3 St. John Overall Dr., Helensvale QLD 4212.
 P/N: (07) 5573 6744
 F/N: (07) 5573 6755
 M/N: 0413 945 959
 E/M: mail@schlecker.com.au

This plan in **NOT** a Disclosure Plan as setout in the Land Sales Act 1984 and is for General Information Only.



Preliminary
SITE PLAN
FOR PROPOSED LOT 1561
SPRING MOUNTAIN STAGE 15B



This plan in **NOT** a Disclosure Plan as setout in the Land Sales Act 1984 and is for General Information Only.

LEGEND

- LEGEND
- Final surface contours based on A.H.D datum at an interval of 1.0m, shown as: —24.0—
- Natural surface contours in undisturbed areas at an interval of 1.0m shown: —24.0—
- Easement for Services and/or Access
- Earthworks Batter
- Kerb/Kerb & Channel
- Drainage Line
- Drainage Pit
- Drainage Gully Pit
- Drainage MH
- Drainage Pit & Soakage Trench
- Water Line
- Water Conduit
- Water Service Point of Entry
- Water Stop Valve
- Fire Hydrant
- Underground Comms
- Comms Pit
- Underground Electricity
- Elec Box/Pit
- Street Light
- Indicative Driveway location
- Building Envelope
- In accordance with Approved Building Envelope Plan 7081 P06 BE A 14/10/2015 by Saunders Havill Group
- Q100 Flood Area
- State Protected Vegetation
- Area B12 shown on Technical Agency Response (Vegetation) Plan (TARP) 1806-6074 SPD 27/8/2018.
- No built structure, other than fences, roads & underground services is to be established, constructed, or located within this Area.

IMPORTANT NOTES:

This plan has been prepared for PEET Pty Ltd for the purposes of Discussion only.
All areas and dimensions are subject to final survey and relevant authority approval.
Location of sewer, roofwater, stormwater, water reticulation, electricity and communication lines, manholes and pits, streetscaping, banks, batters, retaining walls, fencing, footpaths & building envelopes are as shown on engineering design drawings, supplied by KN Group Pty Ltd Consulting Engineers and may differ from the as constructed location. Levels and Contours shown are not to be used for building design or construction. A site survey is required.
For final building requirements the relevant approved Plan of Development prevail over this site plan.
These notes form an integral part of this plan and no part of this plan may be reproduced in whole or in part without these notes.

AMENDMENTS

A	DESCRIPTION	DATE
1	Lots 1523, 1524, 1561, 1562, 1563, 1568 & 1569 mod.	23.7.19
	Electrical and communication services added.	23.7.19

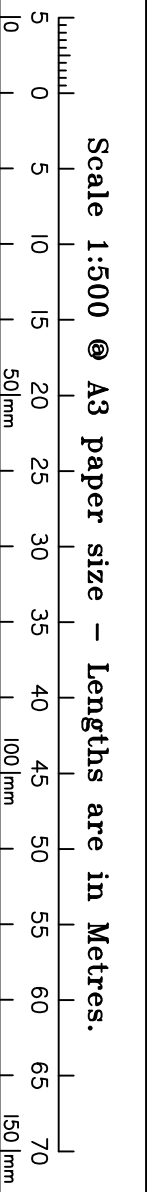
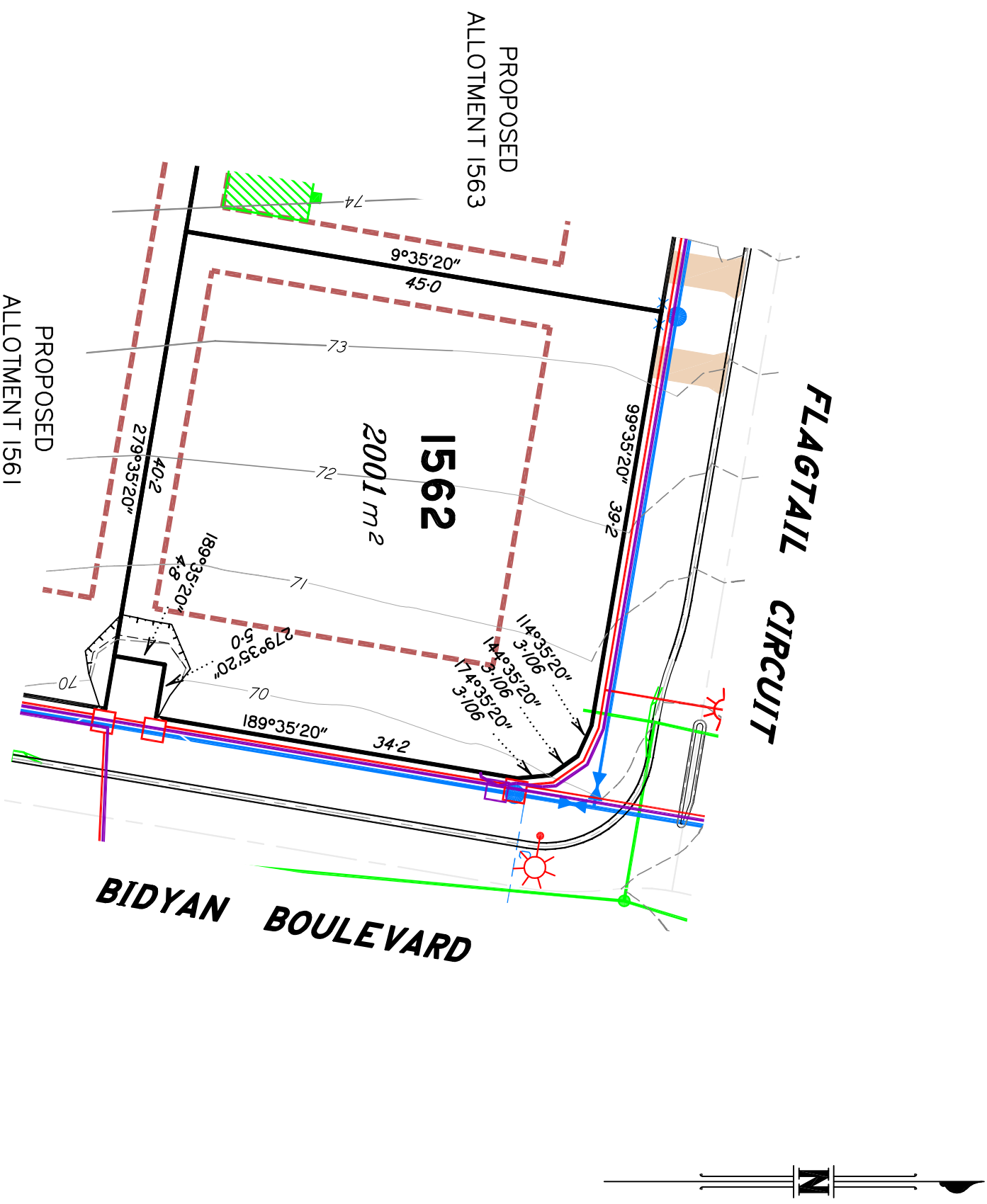
SCHLECKER SURVEYING (QLD)

Gold Coast ♦ Brisbane ♦
Consultants in Surveying,
Mapping & Development



A.B.N. 36 909 833 411
PO Box 41, Helensvale QLD 4212.
Site 206,
Helensvale Professional Centre
351 John Overall Dr., Helensvale QLD 4212.
P/n: (07) 5573 6744
F/n: (07) 5573 6755
M/n: 0413 945 959
E/M: mail@schlecker.com.au
SCALE @ A3 1:500 DWG. NO. 15159-49A-1561

Preliminary
SITE PLAN
 FOR PROPOSED LOT 1562
SPRING MOUNTAIN STAGE 15B



This plan in **NOT** a Disclosure Plan as setout in the Land Sales Act 1984 and is for General Information Only.

LEGEND

- LEGEND**
 Final surface contours based on A.H.D datum at an interval of 1.0m, shown as: —24.0—
 Natural surface contours in undisturbed areas at an interval of 1.0m shown: —24.0—
 Easement for Services and/or Access EMT
 Earthworks Batter
 Kerb/Kerb & Channel
 Drainage Line
 Drainage Pit
 Drainage Gully Pit
 Drainage MH
 Drainage Pit & Soakage Trench
 Water Line
 Water Conduit
 Water Service Point of Entry
 Water Stop Valve
 Fire Hydrant
 Underground Comms
 Comms Pit
 Underground Electricity
 Elec Box/Pit
 Street Light
 Indicative Driveway location
 Building Envelope
 In accordance with Approved Building Envelope Plan 7081 P06 BE A 14/10/2015 by Saunders Havill Group
 Q100 Flood Area
 State Protected Vegetation
 Area B12 shown on Technical Agency Response (Vegetation) Plan (TARP) 1806-6074 SPD 27/8/2018.
 No built structure, other than fences, roads & underground services is to be established, constructed, or located within this Area.

IMPORTANT NOTES:

This plan has been prepared for PEET Pty Ltd for the purposes of Discussion only.
 All areas and dimensions are subject to final survey and relevant authority approval.
 Location of sewer, rootwater, stormwater, water reticulation, electricity and communication lines, manholes and pits, streetscaping, banks, batters, retaining walls, fencing, footpaths & building envelopes are as shown on engineering design drawings, supplied by KN Group Pty Ltd Consulting Engineers and may differ from the as constructed location. Levels and Contours shown are not to be used for building design or construction. A site survey is required.
 For final building requirements the relevant approved Plan of Development prevail over this plan.
 These notes form an integral part of this plan and no part of this plan may be reproduced in whole or in part without these notes.

AMENDMENTS

NO	DESCRIPTION	DATE
A	Lots 1523, 1524, 1561, 1562, 1563, 1568 & 1569 mod. <i>Electrical and communication services added.</i>	23.7.19 23.7.19

SCHLECKER SURVEYING (QLD)

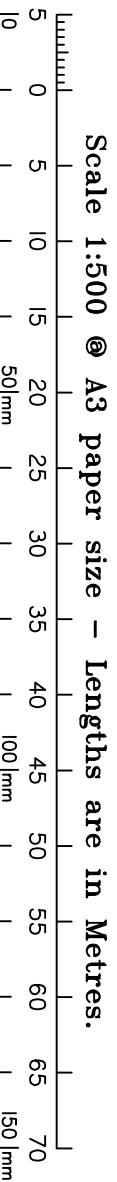
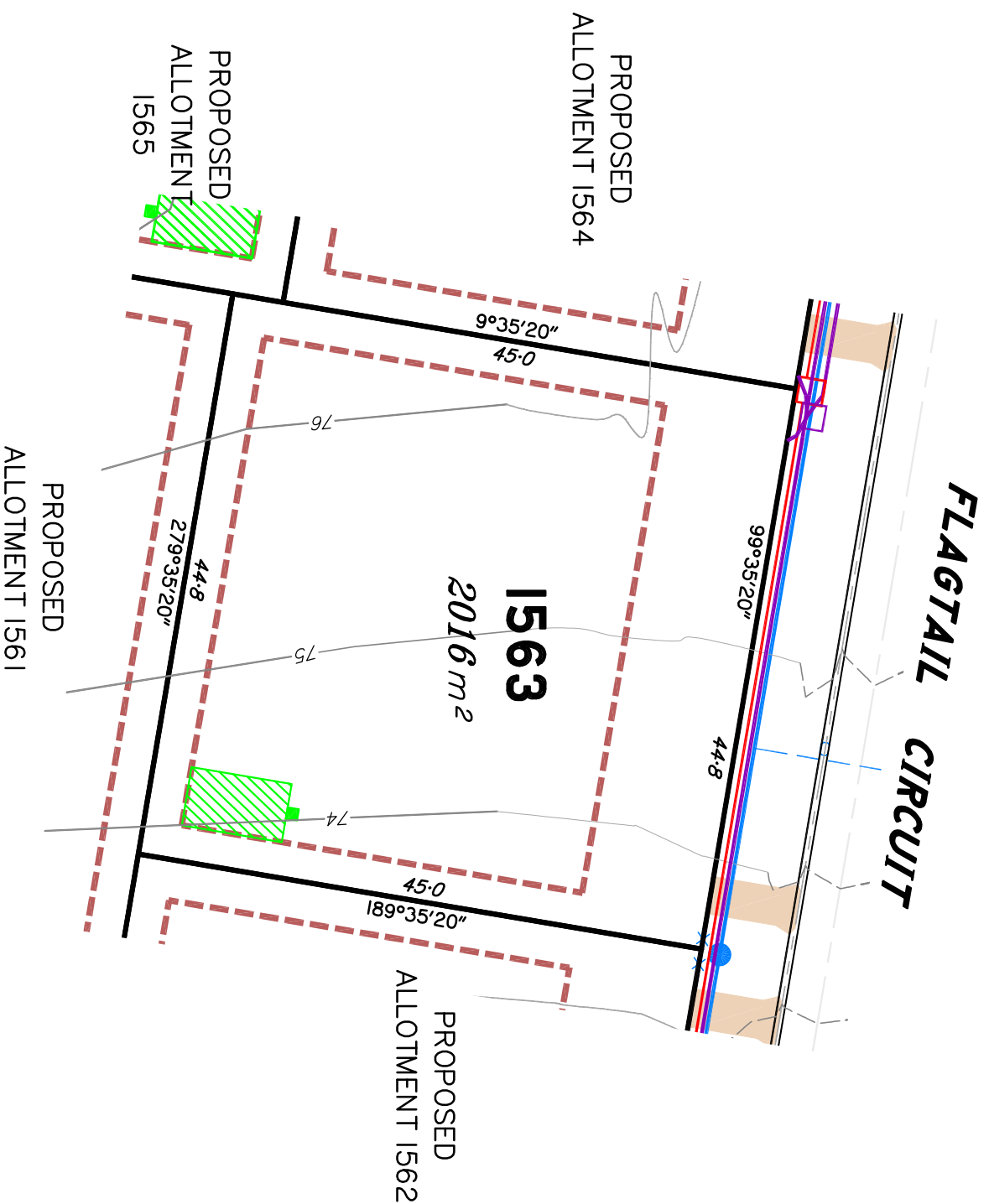
Gold Coast ♦ Brisbane ♦
 Consultants in Surveying,
 Mapping & Development



ABN: 36 909 833 411
 PO Box 41, Helensvale QLD 4212
 Site 206,
 Helensvale Professional Centre
 3 St John Overall Dr., Helensvale QLD 4212.
 P/n: (07) 5573 6744
 F/n: (07) 5573 6755
 M/n: 0413 945 959
 EMAIL: mail@schlecker.com.au

SCALE @ A3 **1:500** DWG. NO. **15159-49A-1562**

Preliminary
SITE PLAN
 FOR PROPOSED LOT 1563
SPRING MOUNTAIN STAGE 15B



This plan in **NOT** a Disclosure Plan as setout in the Land Sales Act 1984 and is for General Information Only.

LEGEND

- LEGEND
- Final surface contours based on A.H.D datum at an interval of 1.0m, shown as: —24.0—
- Natural surface contours in undisturbed areas at an interval of 1.0m shown: —24.0—
- Easement for Services and/or Access
- EMT
- Earthworks Batter
- Kerb/Kerb & Channel
- Drainage Line
- Drainage Pit
- Drainage Gully Pit
- Drainage MH
- Drainage Pit & Soakage Trench
- Water Line
- Water Conduit
- Water Service Point of Entry
- Water Stop Valve
- Fire Hydrant
- Underground Comms
- Comms Pit
- Underground Electricity
- Elec Box/Pit
- Street Light
- Indicative Driveway location
- Building Envelope
- In accordance with Approved Building Envelope Plan 7081 P06 BE A 14/10/2015 by Saunders Havill Group
- Q100 Flood Area
- State Protected Vegetation
- Area B12 shown on Technical Agency Response (Vegetation) Plan (TARP) 1806-6074 SPD 27/8/2018.
- No built structure, other than fences, roads & underground services is to be established, constructed, or located within this Area.

IMPORTANT NOTES:

This plan has been prepared for PEET Pty Ltd for the purposes of Discussion only.
 All areas and dimensions are subject to final survey and relevant authority approval.
 Location of sewer, rootwater, stormwater, water reticulation, electricity and communication lines, manholes and pits, streetscaping, banks, batters, retaining walls, fencing, footpaths & building envelopes are as shown on engineering design drawings, supplied by KN Group Pty Ltd Consulting Engineers and may differ from the as constructed location. Levels and Contours shown are not to be used for building design or construction. A site survey is required.
 For final building requirements the relevant approved Plan of Development prevail over this site plan.
 These notes form an integral part of this plan and no part of this plan may be reproduced in whole or in part without these notes.

AMENDMENTS

A	DESCRIPTION	DATE
1	Lots 1523, 1524, 1561, 1562, 1563, 1568 & 1569 mod.	23.7.19
	Electrical and communication services added.	23.7.19

SCHLECKER SURVEYING (QLD)

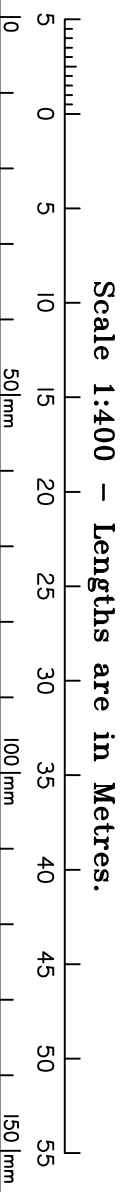
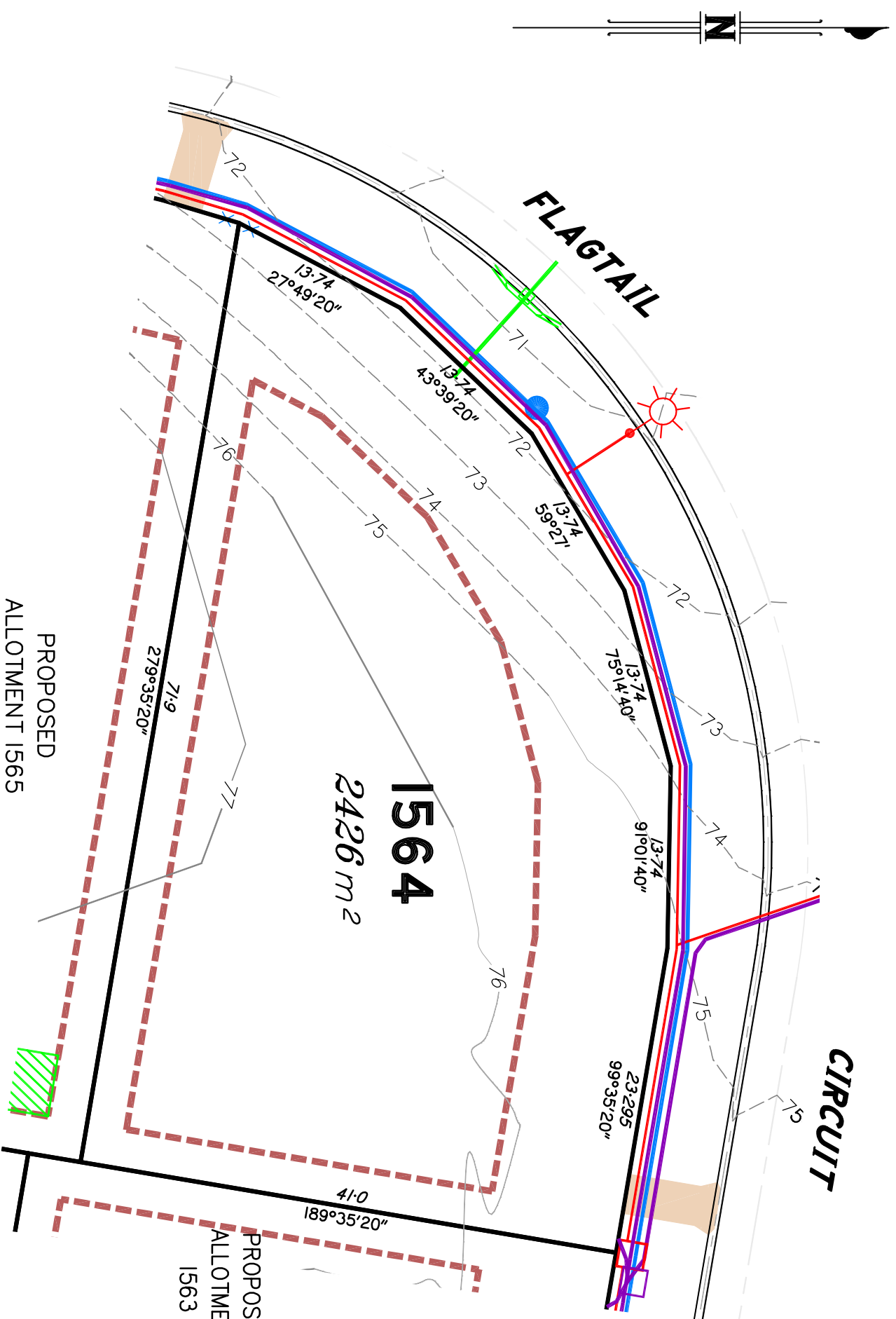
Gold Coast ♦ Brisbane ♦
 Consultants in Surveying,
 Mapping & Development



ABN: 36 909 833 411
 PO Box 41, Helensvale QLD 4212.
 Site 206,
 Helensvale Professional Centre
 3 St John Overall Dr., Helensvale QLD 4212.
 Pn: (07) 5573 6744
 Fax: (07) 5573 6755
 Mob: 0413 945 959
 EMAIL: mail@schlecker.com.au

SCALE @ A3 **1:500** DWG. NO. **15159-49A-1563**

Preliminary
SITE PLAN
 FOR PROPOSED LOT 1564
SPRING MOUNTAIN
 STAGE 15B



This plan in **NOT** a Disclosure Plan as setout in the Land Sales Act 1984 and is for General Information Only.

LEGEND

- LEGEND
- Final surface contours based on A.H.D datum at an interval of 1.0m, shown as: —24.0—
- Natural surface contours in undisturbed areas at an interval of 1.0m shown: —24.0—
- Easement for Services and/or Access
- EMT
- Earthworks Batter
- Kerb/Kerb & Channel
- Drainage Line
- Drainage Pit
- Drainage Gully Pit
- Drainage MH
- Drainage Pit & Soakage Trench
- Water Line
- Water Conduit
- Water Service Point of Entry
- Water Stop Valve
- Fire Hydrant
- Underground Comms
- Comms Pit
- Underground Electricity
- Elec Box/Pit
- Street Light
- Indicative Driveway location
- Building Envelope
- In accordance with Approved Building Envelope Plan 7081 P06 BE A 14/10/2015 by Saunders Havill Group
- Q100 Flood Area
- State Protected Vegetation
- Area B12 shown on Technical Agency Response (Vegetation) Plan (TARP) 1806-6074 SPD 27/8/2018.
- No built structure, other than fences, roads & underground services is to be established, constructed, or located within this Area.

IMPORTANT NOTES:

This plan has been prepared for PEET Pty Ltd for the purposes of Discussion only.
 All areas and dimensions are subject to final survey and relevant authority approval.
 Location of sewer, rootwater, stormwater, water reticulation, electricity and communication lines, manholes and pits, streetscaping, banks, batters, retaining walls, fencing, footpaths & building envelopes are as shown on engineering design drawings, supplied by KN Group Pty Ltd Consulting Engineers and may differ from the as constructed location. Levels and Contours shown are not to be used for building design or construction. A site survey is required.
 For final building requirements the relevant approved Plan of Development prevail over this site plan.
 These notes form an integral part of this plan and no part of this plan may be reproduced in whole or in part without these notes.

AMENDMENTS

A	DESCRIPTION	DATE
1	Lots 1523, 1524, 1561, 1562, 1563, 1568 & 1569 mod. Electrical and communication services added.	23.7.19
		23.7.19

SCHLECKER SURVEYING (QLD)

Gold Coast ♦ Brisbane ♦
 Consultants in Surveying,
 Mapping & Development



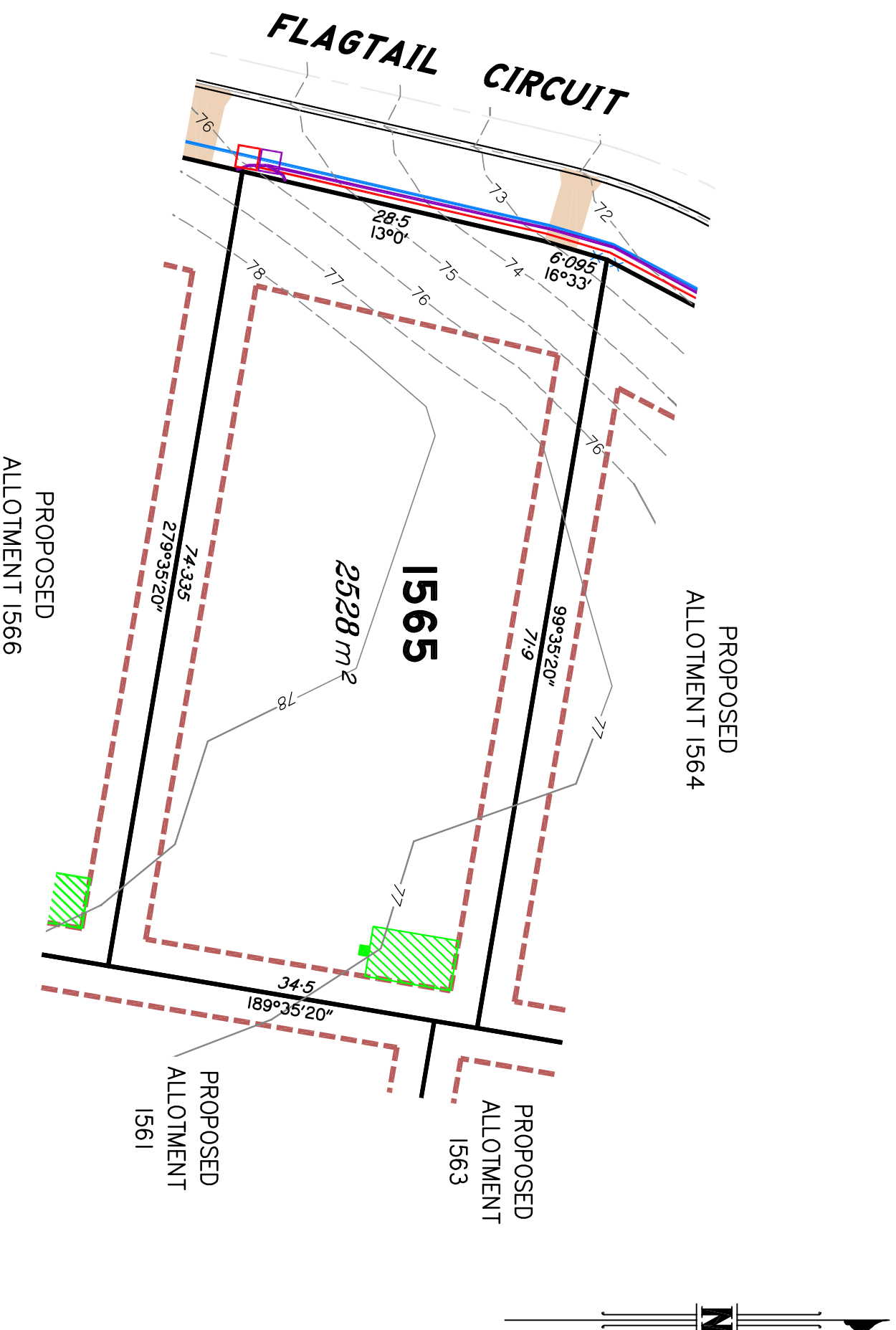
ABN: 36 909 833 411
 PO Box 41, Helensvale QLD 4212
 Site 206,
 Helensvale Professional Centre
 3 St John Overall Dr., Helensvale QLD 4212.
 Pn: (07) 5573 6744
 Fax: (07) 5573 6755
 Mod: 0413 945 959
 Email: mail@schlecker.com.au

SCALE ● A3 **1:400** DWG. NO. **15159-49A-1564**

Preliminary

SITE PLAN

FOR PROPOSED LOT 1565
SPRING MOUNTAIN STAGE 15B



LEGEND

- LEGEND**
Final surface contours based on A.H.D datum at an interval of 1.0m, shown as: —24.0—
Natural surface contours in undisturbed areas at an interval of 1.0m shown: —24.0—
Easement for Services and/or Access
- Earthworks Batter
Kerb/Kerb & Channel
Drainage Line
Drainage Pit
Drainage Gully Pit
Drainage MH
Drainage Pit & Soakage Trench
Water Line
Water Conduit
Water Service Point of Entry
Water Stop Valve
Fire Hydrant
Underground Comms
Comms Pit
Underground Electricity
Elec Box/Pit
Street Light
Indicative Driveway location
Building Envelope
In accordance with Approved Building Envelope Plan 7081 P06 BE A 14/10/2015 by Saunders Havill Group
- Q100 Flood Area
State Protected Vegetation
Area B12 shown on Technical Agency Response (Vegetation) Plan (TRAP) 1806-6074 SPD 27/8/2018.
No built structure, other than fences, roads & underground services is to be established, constructed, or located within this Area.

IMPORTANT NOTES:

This plan has been prepared for PEET Pty Ltd for the purposes of Discussion only.
All areas and dimensions are subject to final survey and relevant authority approval.
Location of sewer, rootwater, stormwater, water reticulation, electricity and communication lines, manholes and pits, streetscaping, banks, batters, retaining walls, fencing, footpaths & building envelopes are as shown on engineering design drawings, supplied by KN Group Pty Ltd Consulting Engineers and may differ from the as constructed location. Levels and Contours shown are not to be used for building design or construction. A site survey is required.
For final building requirements the relevant approved Plan of Development prevail over this site plan.
These notes form an integral part of this plan and no part of this plan may be reproduced in whole or in part without these notes.

AMENDMENTS

A	DESCRIPTION	DATE
1	Lots 1523, 1524, 1561, 1562, 1563, 1568 & 1569 mod. Electrical and communication services added.	23.7.19 23.7.19

SCHLECKER SURVEYING (QLD)

Gold Coast ♦ Brisbane ♦
Consultants in Surveying,
Mapping & Development

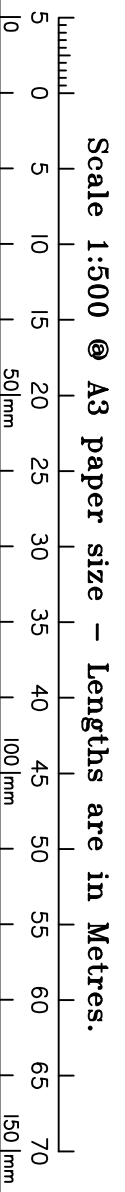
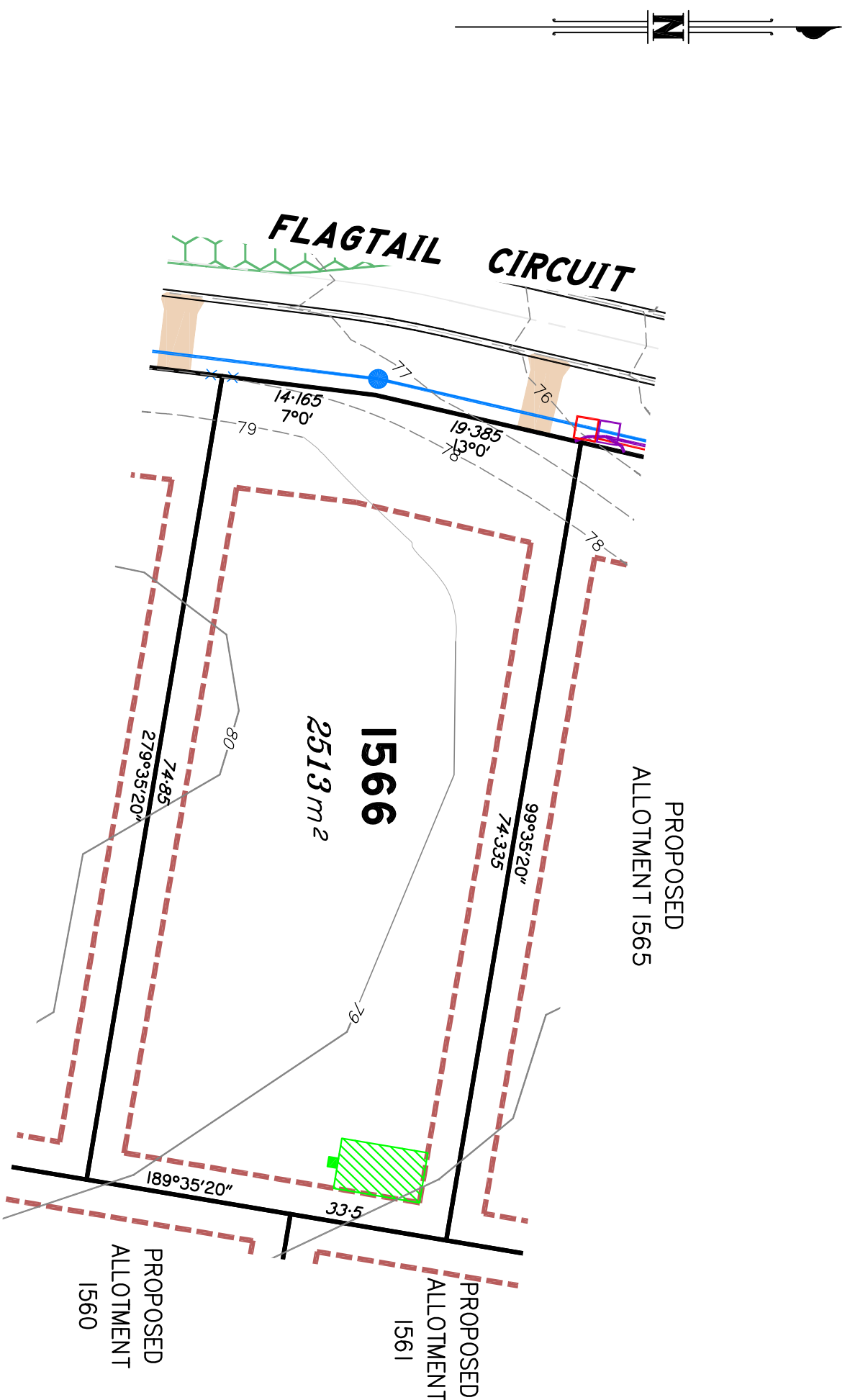


A.B.N. 36 909 833 411
PO Box 41, Helensvale QLD 4212.
Site 206,
Helensvale Professional Centre
351 John Overall Dr., Helensvale QLD 4212.
P/n: (07) 5573 6744
F/n: (07) 5573 6755
Mobi: 0413 945 959
EMAIL: mail@schlecker.com.au

SCALE @ A3 **1:500** DWG. NO. **15159-49A-1565**

This plan in **NOT** a Disclosure Plan as setout in the Land Sales Act 1984 and is for General Information Only.

Preliminary
SITE PLAN
 FOR PROPOSED LOT 1566
 SPRING MOUNTAIN STAGE 15B



This plan in **NOT** a Disclosure Plan as setout in the Land Sales Act 1984 and is for General Information Only.

LEGEND

- LEGEND
- Final surface contours based on A.H.D datum at an interval of 1.0m, shown as: -24.0-
- Natural surface contours in undisturbed areas at an interval of 1.0m shown: -24.0-
- Easement for Services and/or Access EMT
- Earthworks Batter Top
- Kerb/Kerb & Channel Top
- Drainage Line
- Drainage Pit
- Drainage Gully Pit
- Drainage MH
- Drainage Pit & Soakage Trench
- Water Line
- Water Conduit
- Water Service Point of Entry
- Water Stop Valve
- Fire Hydrant
- Underground Comms
- Comms Pit
- Underground Electricity
- Elec Box/Pit
- Street Light
- Indicative Driveway location
- Building Envelope
- In accordance with Approved Building Envelope Plan 7081 P06 BE A 14/10/2015 by Saunders Havill Group
- Q100 Flood Area
- State Protected Vegetation
- Area B12 shown on Technical Agency Response (Vegetation) Plan (TRAP) 1806-6074 SPD 27/8/2018.
- No built structure, other than fences, roads & underground services is to be established, constructed, or located within this Area.

IMPORTANT NOTES:

This plan has been prepared for PEET Pty Ltd for the purposes of Discussion only.
 All areas and dimensions are subject to final survey and relevant authority approval.
 Location of sewer, rootwater, stormwater, water reticulation, electricity and communication lines, manholes and pits, streetscaping, banks, batters, retaining walls, fencing, footpaths & building envelopes are as shown on engineering design drawings, supplied by KN Group Pty Ltd Consulting Engineers and may differ from the as constructed location. Levels and Contours shown are not to be used for building design or construction. A site survey is required.
 For final building requirements the relevant approved Plan of Development prevail over this site plan.
 These notes form an integral part of this plan and no part of this plan may be reproduced in whole or in part without these notes.

AMENDMENTS

A	DESCRIPTION	DATE
1	Lots 1523, 1524, 1561, 1562, 1563, 1568 & 1569 mod. Electrical and communication services added.	23.7.19
		23.7.19

SCHLECKER SURVEYING (QLD)

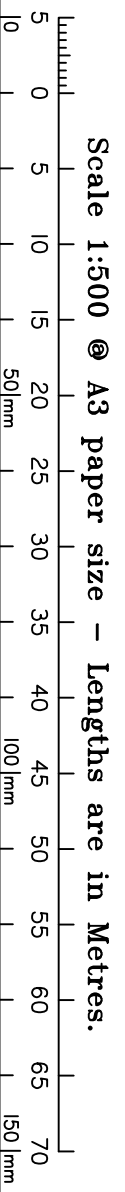
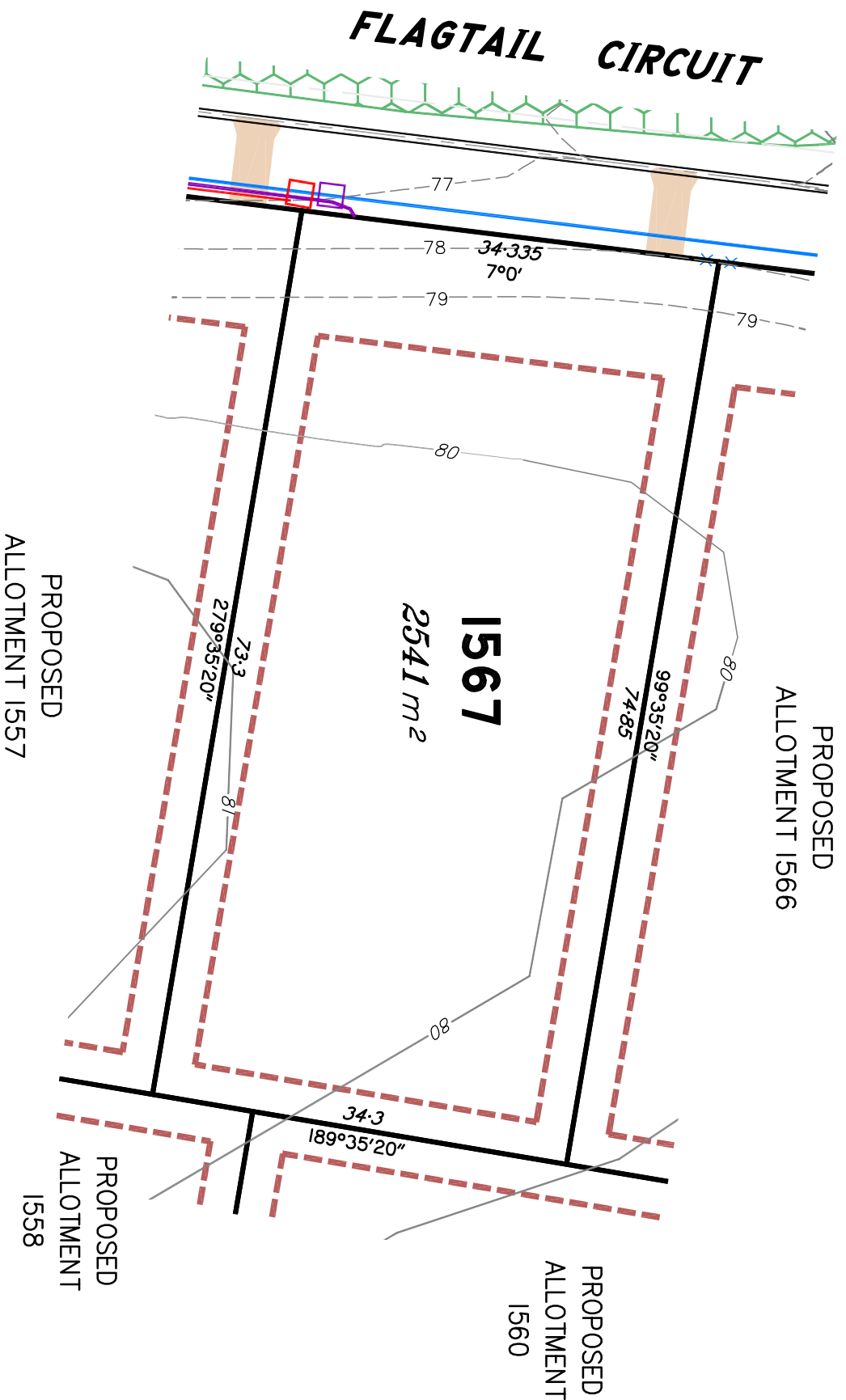
Gold Coast ♦ Brisbane ♦
 Consultants in Surveying,
 Mapping & Development



A.B.N. 36 909 833 411
 PO Box 41, Helensvale QLD 4212.
 Site 206,
 Helensvale Professional Centre
 3 St. John Overall Dr., Helensvale QLD 4212.
 P.h.: (07) 5573 6744
 F.h.: (07) 5573 6755
 M.h.: 0413 945 959
 E.M.A.I.L.: mail@schlecker.com.au

SCALE @ A3 **1:500** DWG. NO. **15/159-49A-1566**

Preliminary
SITE PLAN
 FOR PROPOSED LOT 1567
 SPRING MOUNTAIN STAGE 15B



This plan in **NOT** a Disclosure Plan as setout in the Land Sales Act 1984 and is for General Information Only.

LEGEND

- LEGEND
- Final surface contours based on A.H.D datum at an interval of 1.0m, shown as: -24.0-
- Natural surface contours in undisturbed areas at an interval of 1.0m shown: -24.0-
- Easement for Services and/or Access EMT
- Earthworks Batter Top
- Kerb/Kerb & Channel Top
- Drainage Line Top
- Drainage Pit Top
- Drainage Gully Pit Top
- Drainage MH Top
- Drainage Pit & Soakage Trench Top
- Water Line Top
- Water Conduit Top
- Water Service Point of Entry Top
- Water Stop Valve Top
- Fire Hydrant Top
- Underground Comms Top
- Comms Pit Top
- Underground Electricity Top
- Elec Box/Pit Top
- Street Light Top
- Indicative Driveway location Top
- Building Envelope Top
- In accordance with Approved Building Envelope Plan 7081 P06 BE A 14/10/2015 by Saunders Havill Group
- Q100 Flood Area Top
- State Protected Vegetation Top
- Area B12 shown on Technical Agency Response (Vegetation) Plan (TARP) 1806-6074 SPD 27/8/2018.
- No built structure, other than fences, roads & underground services is to be established, constructed, or located within this Area.

IMPORTANT NOTES:

This plan has been prepared for PEET Pty Ltd for the purposes of Discussion only.
 All areas and dimensions are subject to final survey and relevant authority approval.
 Location of sewer, rootwater, stormwater, water reticulation, electricity and communication lines, manholes and pits, streetscaping, banks, batters, retaining walls, fencing, footpaths & building envelopes are as shown on engineering design drawings, supplied by KN Group Pty Ltd Consulting Engineers and may differ from the as constructed location. Levels and Contours shown are not to be used for building design or construction. A site survey is required.
 For final building requirements the relevant approved Plan of Development prevail over this site plan.
 These notes form an integral part of this plan and no part of this plan may be reproduced in whole or in part without these notes.

AMENDMENTS

A	DESCRIPTION	DATE
1	Lots 1523, 1524, 1561, 1562, 1563, 1568 & 1569 mod.	23.7.19
	Electrical and communication services added.	23.7.19

SCHLECKER SURVEYING (QLD)

Gold Coast ♦ Brisbane ♦
 Consultants in Surveying,
 Mapping & Development



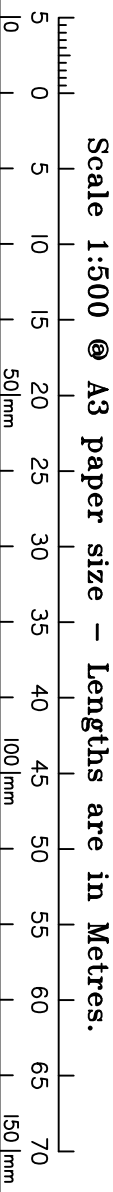
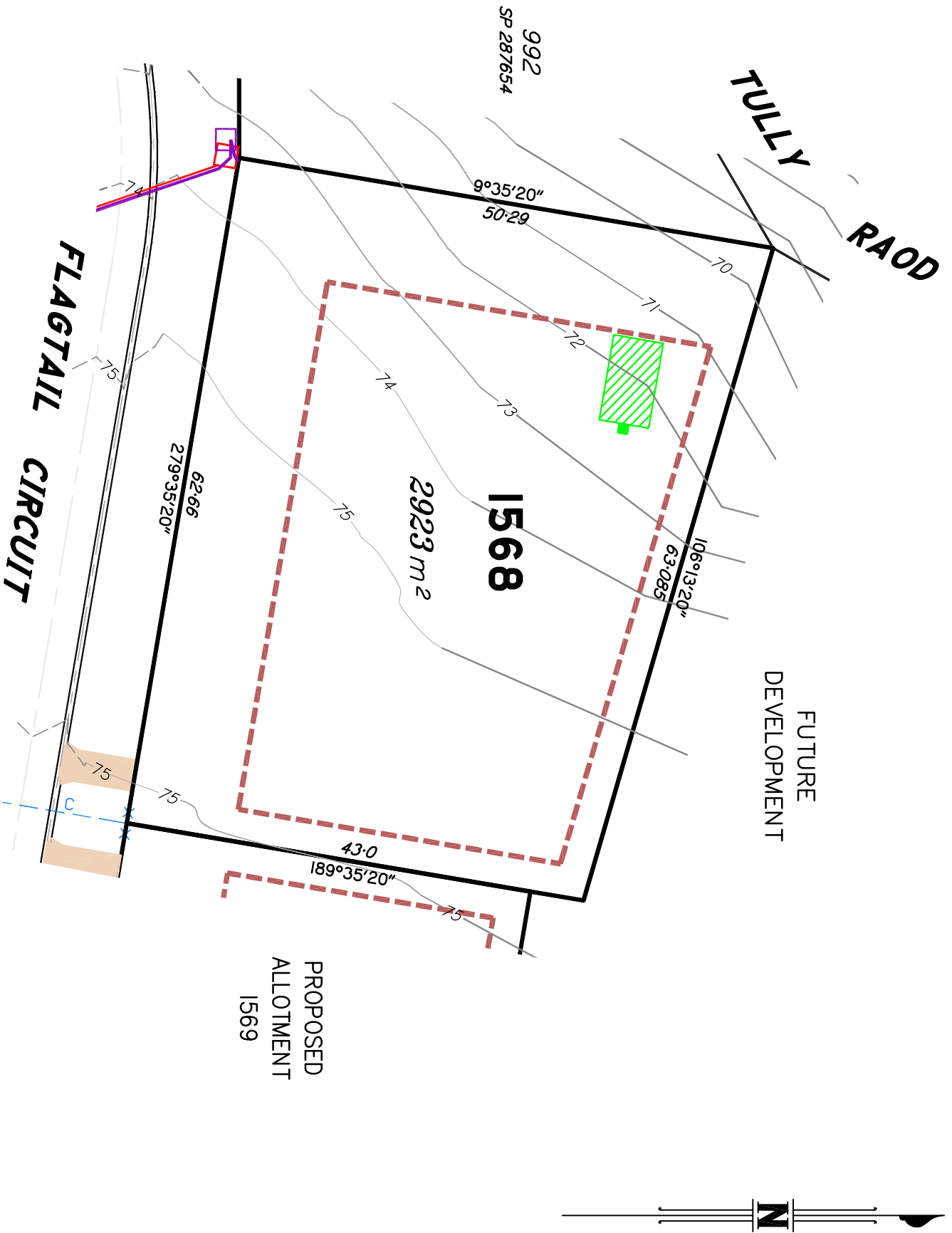
ABN: 36 909 833 411
 PO Box 41, Helensvale QLD 4212.
 Site 206,
 Helensvale Professional Centre
 351 John Overall Dr., Helensvale QLD 4212.
 Pn: (07) 5573 6744
 Fax: (07) 5573 6755
 Mob: 0413 945 959
 EMAIL: mail@schlecker.com.au

SCALE @ A3 **1:500** DWG. NO. **15159-49A-1567**

Preliminary

SITE PLAN

FOR PROPOSED LOT 1568
SPRING MOUNTAIN STAGE 15B



This plan in **NOT** a Disclosure Plan as setout in the Land Sales Act 1984 and is for General Information Only.

LEGEND

- LEGEND
- Final surface contours based on A.H.D datum at an interval of 1.0m, shown as: -24.0-
- Natural surface contours in undisturbed areas at an interval of 1.0m shown: -24.0-
- Easement for Services and/or Access EMT
- Earthworks Batter Top
- Kerb/Kerb & Channel Top
- Drainage Line Top
- Drainage Pit Top
- Drainage Gully Pit Top
- Drainage MH Top
- Drainage Pit & Soakage Trench Top
- Water Line Top
- Water Conduit Top
- Water Service Point of Entry Top
- Water Stop Valve Top
- Fire Hydrant Top
- Underground Comms Top
- Comms Pit Top
- Underground Electricity Top
- Elec Box/Pit Top
- Street Light Top
- Indicative Driveway location Top
- Building Envelope Top
- In accordance with Approved Building Envelope Plan 7081 P06 BE A 14/10/2015 by Saunders Havill Group
- Q100 Flood Area Top
- State Protected Vegetation Top
- Area B12 shown on Technical Agency Response (Vegetation) Plan (TARP) 1806-6074 SPD 27/8/2018.
- No built structure, other than fences, roads & underground services is to be established, constructed, or located within this Area. Top

IMPORTANT NOTES:

This plan has been prepared for PEET Pty Ltd for the purposes of Discussion only.
 All areas and dimensions are subject to final survey and relevant authority approval.
 Location of sewer, rootwater, stormwater, water reticulation, electricity and communication lines, manholes and pits, streetscaping, banks, batters, retaining walls, fencing, footpaths & building envelopes are as shown on engineering design drawings, supplied by KN Group Pty Ltd Consulting Engineers and may differ from the as constructed location. Levels and Contours shown are not to be used for building design or construction. A site survey is required.
 For final building requirements the relevant approved Plan of Development prevail over this site plan.
 These notes form an integral part of this plan and no part of this plan may be reproduced in whole or in part without these notes.

AMENDMENTS

A	DESCRIPTION	DATE
1	Lots 1523, 1524, 1561, 1562, 1563, 1568 & 1569 mod.	23.7.19
	Electrical and communication services added.	23.7.19

SCHLECKER SURVEYING (QLD)

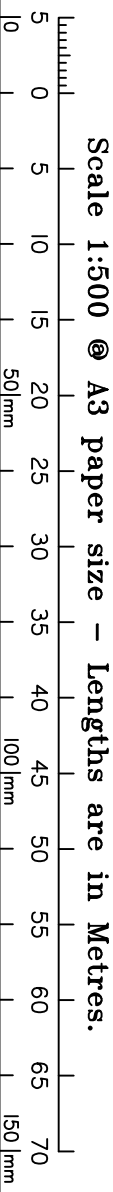
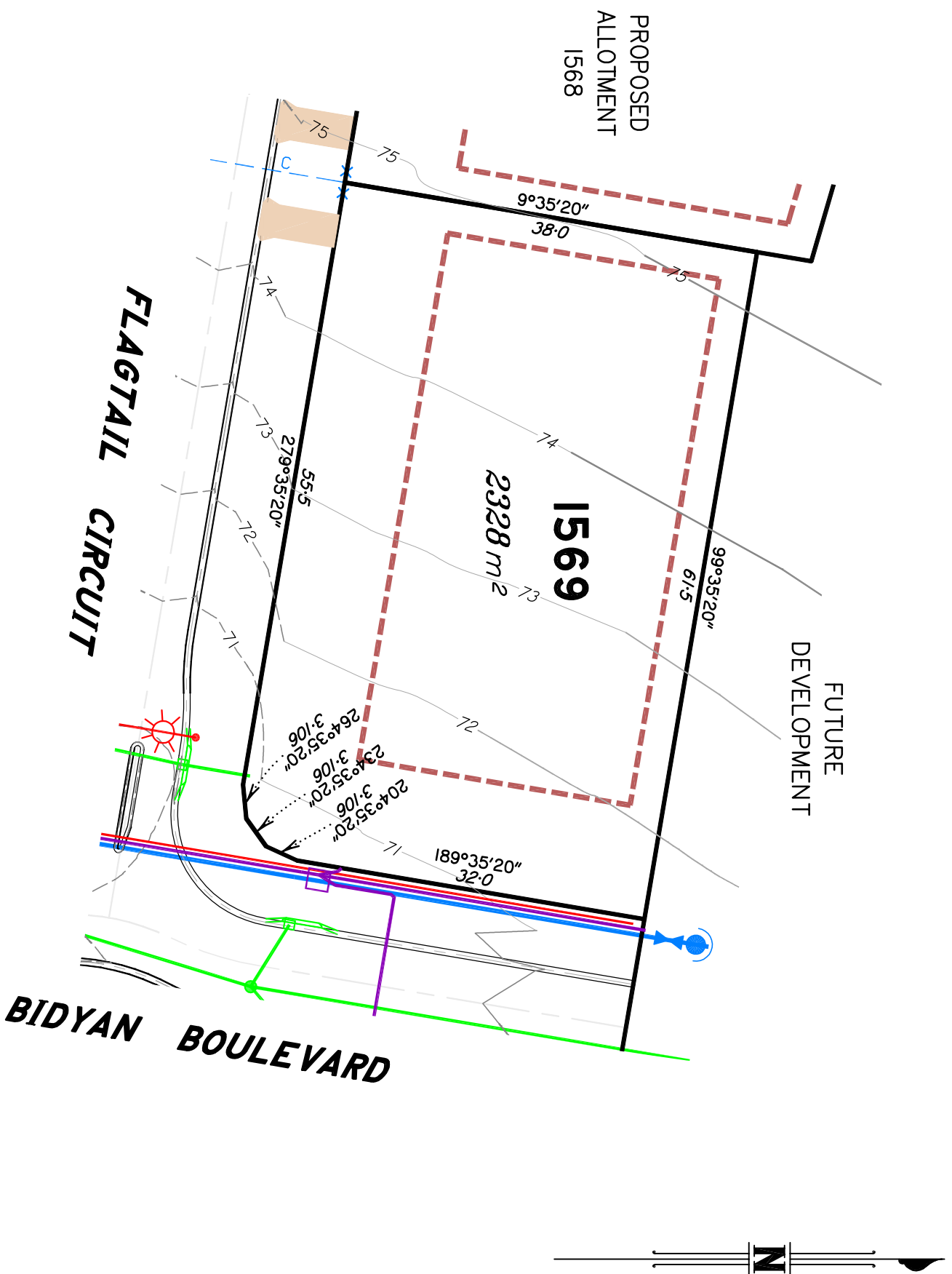
Gold Coast ♦ Brisbane ♦
 Consultants in Surveying,
 Mapping & Development



A.B.N. 36 909 833 411
 PO Box 41, Helensvale QLD 4212.
 Site 206,
 Helensvale Professional Centre
 3 St. John Overall Dr., Helensvale QLD 4212.
 P/n: (07) 5573 6744
 Fax: (07) 5573 6755
 Mob: 0413 945 959
 EMAIL: mail@schlecker.com.au

SCALE @ A3 1:500 DWG. NO. 15159-49A-1568

Preliminary
SITE PLAN
 FOR PROPOSED LOT 1569
 SPRING MOUNTAIN STAGE 15B



This plan in **NOT** a Disclosure Plan as setout in the Land Sales Act 1984 and is for General Information Only.

LEGEND

- LEGEND
- Final surface contours based on A.H.D datum at an interval of 1.0m, shown as: —24.0—
- Natural surface contours in undisturbed areas at an interval of 1.0m shown: —24.0—
- Easement for Services and/or Access
- EMT
- Earthworks Batter
- Kerb/Kerb & Channel
- Drainage Line
- Drainage Pit
- Drainage Gully Pit
- Drainage MH
- Drainage Pit & Soakage Trench
- Water Line
- Water Conduit
- Water Service Point of Entry
- Water Stop Valve
- Fire Hydrant
- Underground Comms
- Comms Pit
- Underground Electricity
- Elec Box/Pit
- Street Light
- Indicative Driveway location
- Building Envelope
- In accordance with Approved Building Envelope Plan 7081 P06 BE A 14/10/2015 by Saunders Havill Group
- Q100 Flood Area
- State Protected Vegetation
- Area B12 shown on Technical Agency Response (Vegetation) Plan (TARP) 1806-6074 SPD 27/8/2018.
- No built structure, other than fences, roads & underground services is to be established, constructed, or located within this Area.

IMPORTANT NOTES:

This plan has been prepared for PEET Pty Ltd for the purposes of Discussion only.
 All areas and dimensions are subject to final survey and relevant authority approval.
 Location of sewer, rootwater, stormwater, water reticulation, electricity and communication lines, manholes and pits, streetscaping, banks, batters, retaining walls, fencing, footpaths & building envelopes are as shown on engineering design drawings, supplied by KN Group Pty Ltd Consulting Engineers and may differ from the as constructed location. Levels and Contours shown are not to be used for building design or construction. A site survey is required.
 For final building requirements the relevant approved Plan of Development prevail over this site plan.
 These notes form an integral part of this plan and no part of this plan may be reproduced in whole or in part without these notes.

AMENDMENTS

NO	DESCRIPTION	DATE
A	Lots 1523, 1524, 1561, 1562, 1563, 1568 & 1569 mod. <i>Electrical and communication services added.</i>	23.7.19 23.7.19

SCHLECKER SURVEYING (QLD)

Gold Coast ♦ Brisbane ♦
 Consultants in Surveying,
 Mapping & Development



ABN: 36 909 833 411
 PO Box 41, Helensvale QLD 4212.
 Site 206,
 Helensvale Professional Centre
 3 St John Overall Dr., Helensvale QLD 4212.
 P/N: (07) 5573 6744
 F/N: (07) 5573 6755
 M/N: 0413 945 959
 EMAIL: mail@schlecker.com.au

SCALE @ A3 **1:500** DWG. NO. **15/159-49A-1569**