

**NOTES**

This plan has been prepared from As Constructed Surveys of sewerage, water and drainage services only. No other services have been located.

Before starting any demolition, excavation or construction on the site, the relevant person should make an independent and updated enquiry of "dial before you dig" and any relevant service providers to ascertain the existence of further services (if any) and the accurate location of those not able to have been surveyed at the time of preparing this plan.

\* No responsibility can be accepted by Saunders Havill Group Pty Ltd, for any damage caused to any underground service or any loss or injury so suffered if enquiry and verification have not been completed in accordance with this note.

\*\* This note is an integral part of this plan/data. Reproduction of this plan or any part of it without this note being included in full will render the information shown on such reproduction invalid and not suitable for use.

**LEGEND**

SEWER MAINS	by Survey
WATER MAINS	
WATER CONDUIT	
STORMWATER	

**SYMBOLS**      **ABBREVIATIONS**

Sewer Manhole / Shaft	○	MH	Manhole
Fire Hydrant	⊗	MS	Maintenance Shaft
Valve	⊕	SL	Surface Level
Water Meter	⊗	IL	Invert Level
Kerb Adapter	⊕	BM	Bench Mark
Stormwater Manhole	○	∅	Diameter
Stormwater Pit	⊕	KA	Kerb Adapter
		HC	House Connection

Scale 1:200 - Lengths are in Metres.

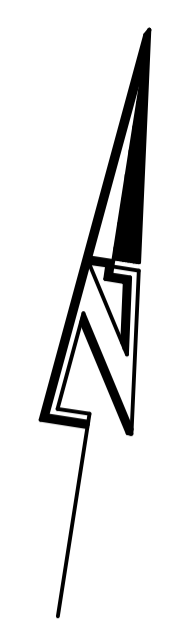
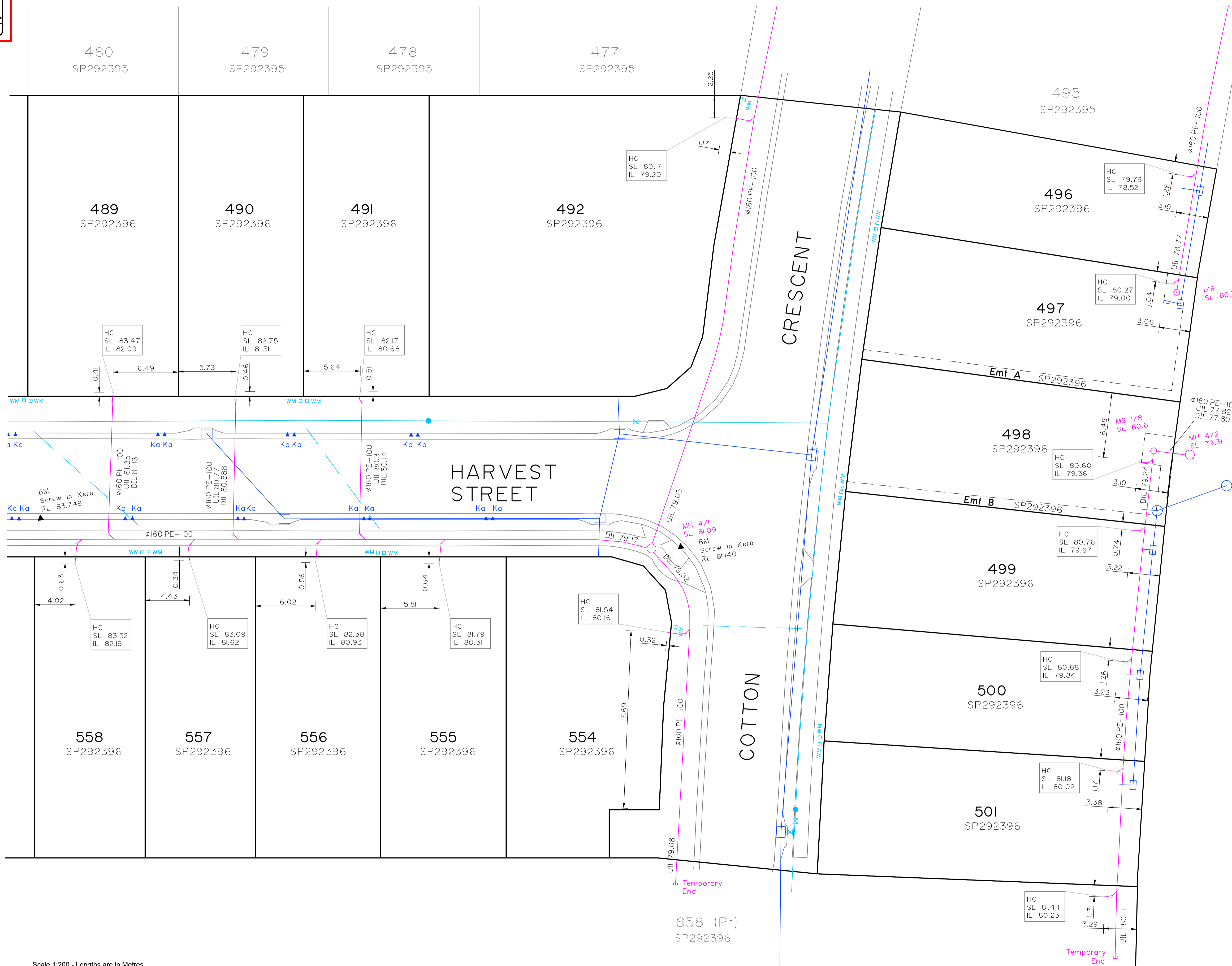
**saunders havill group**  
 Saunders Havill Group Pty Ltd ABN 24 144 972 949  
 Brisbane • Emerald • Rockhampton  
 head office 9 Thompson St Bowen Hills Q 4006  
 phone 1300 123 SHG web www.saundershavill.com  
 surveying • town planning • urban design • environmental management • landscape architecture

No.	Drawn	Date	Description	Checked
A	MD	30/04/2018	Original Issue	MK

Plan of **As Constructed Sketch (Sheet 1 of 2)**  
 Project **EDENS CROSSING - STAGE 3**  
 Client **Peet Pty Ltd**

Surveyed	Date	Lot Description
CU	Feb 2018	SP292395
Level Datum: AHD der.		Locality: Redbank Plains
Origin of Levels: PM203226		Local Government:
RL of Origin: 75.312		Ipswich City Council
Contour Interval:		

**surveying**  
 Scale @A1 1:200  
 @A3 1:400  
 Dwg No. **8459 S 33 SE A**



**NOTES**

This plan has been prepared from As Constructed Surveys of sewerage, water and drainage services only. No other services have been located.

Before starting any demolition, excavation or construction on the site, the relevant person should make an independent and updated enquiry of "dial before you dig" and any relevant service providers to ascertain the existence of further services (if any) and the accurate location of those not able to have been surveyed at the time of preparing this plan.

\* No responsibility can be accepted by Saunders Havill Group Pty Ltd, for any damage caused to any underground service or any loss or injury so suffered if enquiry and verification have not been completed in accordance with this note.

\*\* This note is an integral part of this plan/data. Reproduction of this plan or any part of it without this note being included in full will render the information shown on such reproduction invalid and not suitable for use.

**LEGEND**

SEWER MAINS	by Survey
WATER MAINS	
WATER CONDUIT	
STORMWATER	

**SYMBOLS**      **ABBREVIATIONS**

Sewer Manhole / Shaft	○	MH	Manhole
Fire Hydrant	⊗	MS	Maintenance Shaft
Valve	⊗	SL	Surface Level
Water Meter	⊗	IL	Invert Level
Kerb Adapter	⊗	BM	Bench Mark
Stormwater Manhole	○	∅	Diameter
Stormwater Pit	□	KA	Kerb Adapter
		HC	House Connection

Scale 1:200 - Lengths are in Metres.

**saunders havill group**  
 Saunders Havill Group Pty Ltd ABN 24 144 972 949  
 Brisbane • Emerald • Rockhampton  
 head office 9 Thompson St Bowen Hills Q 4006  
 phone 1300 123 SHG web www.saundershavill.com  
 surveying • town planning • urban design • environmental management • landscape architecture

No.	Drawn	Date	Description	Checked	Plan of
A	MD	30/04/2018	Original Issue	MK	As Constructed Sketch (Sheet 2 of 2)

**As Constructed Sketch (Sheet 2 of 2)**  
**EDENS CROSSING - STAGE 3**  
 Client: Peet Pty Ltd

Surveyed	Date	Lot Description
CU	Feb 2018	SP292396
Level Datum: AHD der.		Locality: Redbank Plains
Origin of Levels: PM203226		Local Government: Ipswich City Council
RL of Origin: 75.312		
Contour Interval:		

**surveying**  
 Scale @A1 1:200  
 @A3 1:400  
 Dwg No. 8459 S 33 SE A