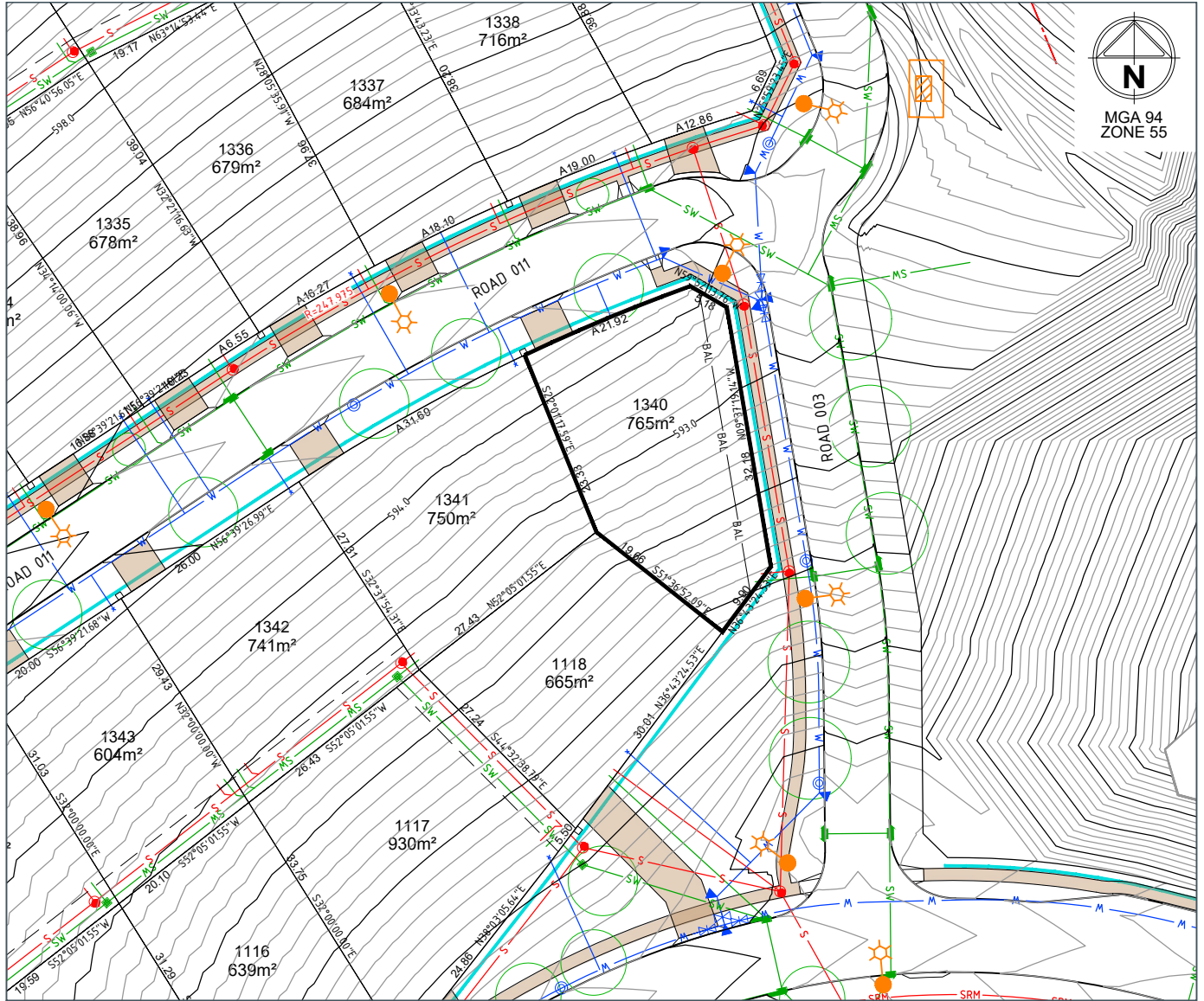


Jumping Creek

Home is here.

LOT 1340

LOT PLAN LAYOUT



LOT LAYOUT - SCALE 1:400 (A4)

REVISION --- DATE

LEGEND

LOT BOUNDARY	—	WATER SERVICES TRENCH (Electricity, NBN)	— W —
FINISHED SURFACE CONTOUR (0.2m)	— 590.0 —	STREETLIGHT	
BLOCK AREA / BOUNDARY LENGTH	400m² 4.54	SUBSTATION	
BLOCK BEARING	90°00'00"	ELECTRICAL PILLAR / PIT	
EASEMENT (Sewer and/or Stormwater)	---	NBN PIT	
DRAINAGE / STRUCTURE		DRIVEWAY LOCATION	
SEWER / STRUCTURE			
SEWER RISING MAIN			

STREET TREE/EXISTING TREE	
PATH (1.5m wide)	
RETAINING WALL	
BAL 29 LINE	
1.8m HIGH COLOURBOND FENCE BY DEVELOPER	

LOCALITY PLAN



DRAFT

© Spiire Australia Pty Ltd All Rights Reserved
 This document is produced by Spiire Australia Pty Ltd solely for the benefit of and use by the client in accordance with the terms of the retainer. Spiire Australia Pty Ltd does not and shall not assume any responsibility or liability whatsoever to any third party arising out of any use or reliance by third party on the content of this document.

Disclaimer: All care has been taken in the preparation of this material. No responsibility is taken by the vendor for any errors or omissions, and details may be subject to change. Artwork, images and plans are artists impressions only and are not relied on as a definitive reference. All road designs, contours, lot sizes, lot dimensions, easements, covenants, trees, streetlights, substations, pit and pillars are preliminary only and are subject to final survey. For final Lot numbers refer registered deposited plans (DP).



File name: 307957CE000.dwg, layout name: CE000, created by: Carl Oth, Date: 03/09/2021 4:04 PM, Sheet of: Sheets

Jumping Creek

Home is here.

LOT 1341

LOT PLAN LAYOUT



LOT LAYOUT - SCALE 1:400 (A4)

REVISION --- DATE

LEGEND

LOT BOUNDARY	—	WATER SERVICES TRENCH (Electricity, NBN)	— W —
FINISHED SURFACE CONTOUR (0.2m)	— 590.0 —	STREETLIGHT	☀
BLOCK AREA / BOUNDARY LENGTH	400m ² 4.54	SUBSTATION	⊞
BLOCK BEARING	90°00'00"	ELECTRICAL PILLAR / PIT	⊞
EASEMENT (Sewer and/or Stormwater)	---	NBN PIT	⊞
DRAINAGE / STRUCTURE	— SW —	DRIVEWAY LOCATION	⊞
SEWER / STRUCTURE	— S —		
SEWER RISING MAIN	— SRM —		

STREET TREE/EXISTING TREE	⊙
PATH (1.5m wide)	—
RETAINING WALL	—
BAL 29 LINE	— BAL —
1.8m HIGH COLOURBOND FENCE BY DEVELOPER	—

LOCALITY PLAN



DRAFT

© Spiire Australia Pty Ltd All Rights Reserved
 This document is produced by Spiire Australia Pty Ltd solely for the benefit of and use by the client in accordance with the terms of the retainer. Spiire Australia Pty Ltd does not and shall not assume any responsibility or liability whatsoever to any third party arising out of any use or reliance by third party on the content of this document.

Disclaimer: All care has been taken in the preparation of this material. No responsibility is taken by the vendor for any errors or omissions, and details may be subject to change. Artwork, images and plans are artists impressions only and are not relied on as a definitive reference. All road designs, contours, lot sizes, lot dimensions, easements, covenants, trees, streetlights, substations, pit and pillars are preliminary only and are subject to final survey. For final Lot numbers refer registered deposited plans (DP).



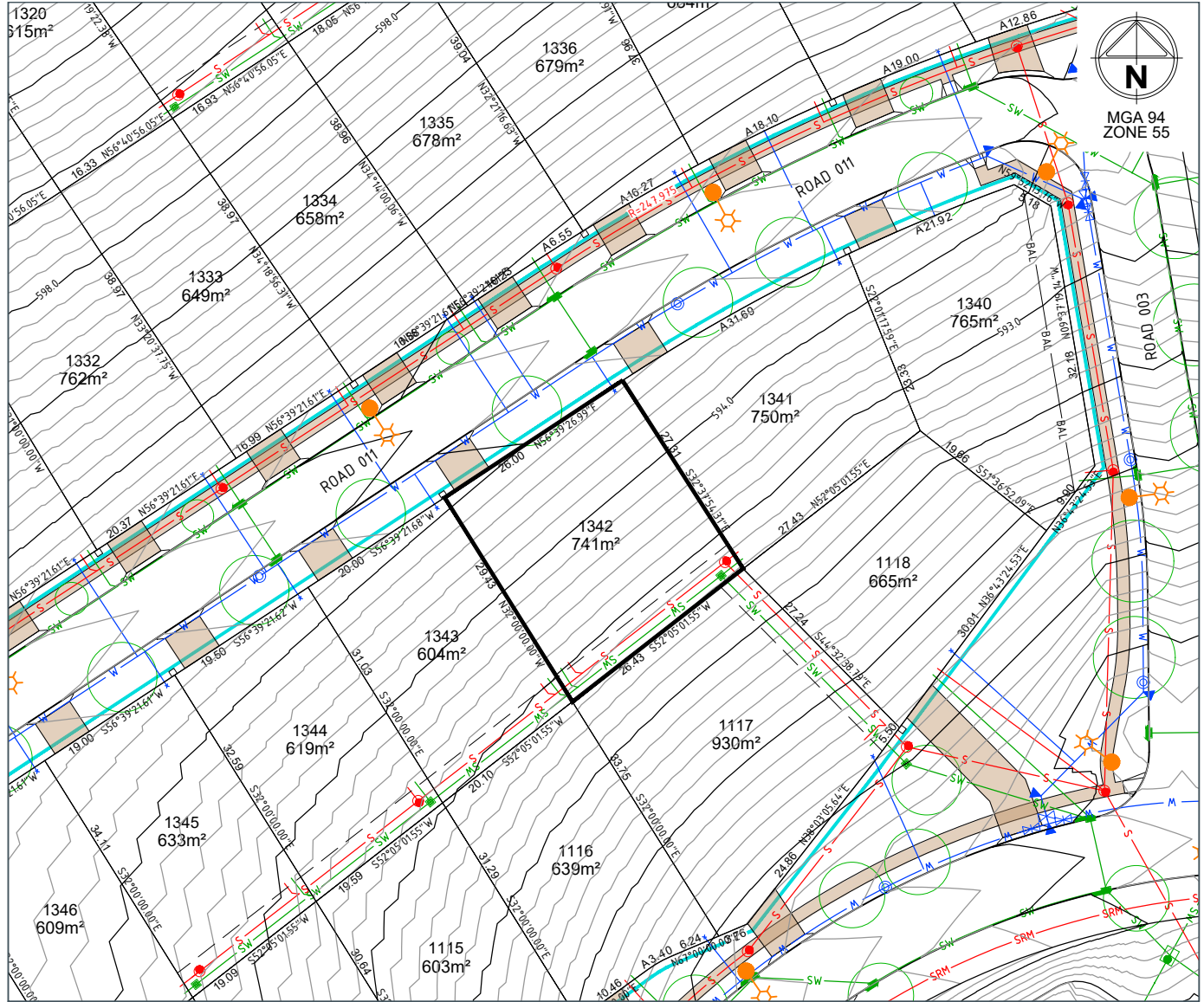
file name: 307857CG000.dwg, layout name: CG001, plotted by: Carl O'Hs, file location: G:\307857\307857\307857\CG001\CG001.dwg, plot date: 03/09/2021 4:05 PM, Sheet 1 of 1

Jumping Creek

Home is here.

LOT 1342

LOT PLAN LAYOUT



LOT LAYOUT - SCALE 1:400 (A4)

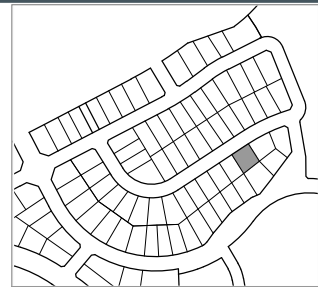
REVISION --- DATE

LEGEND

- LOT BOUNDARY ———
- FINISHED SURFACE CONTOUR (0.2m) —590.0—
- BLOCK AREA / BOUNDARY LENGTH 400m² 4.54
- BLOCK BEARING 90°00'00"
- EASEMENT (Sewer and/or Stormwater) - - - - -
- DRAINAGE / STRUCTURE SW
- SEWER / STRUCTURE S
- SEWER RISING MAIN SRM
- WATER SERVICES TRENCH (Electricity, NBN) W
- STREETLIGHT
- SUBSTATION
- ELECTRICAL PILLAR / PIT
- NBN PIT
- DRIVEWAY LOCATION

- STREET TREE/EXISTING TREE
- PATH (1.5m wide)
- RETAINING WALL
- BAL 29 LINE
- 1.8m HIGH COLOURBOND FENCE BY DEVELOPER

LOCALITY PLAN



DRAFT

© Spiire Australia Pty Ltd All Rights Reserved
 This document is produced by Spiire Australia Pty Ltd solely for the benefit of and use by the client in accordance with the terms of the retainer. Spiire Australia Pty Ltd does not and shall not assume any responsibility or liability whatsoever to any third party arising out of any use or reliance by third party on the content of this document.

Disclaimer: All care has been taken in the preparation of this material. No responsibility is taken by the vendor for any errors or omissions, and details may be subject to change. Artwork, images and plans are artists impressions only and are not relied on as a definitive reference. All road designs, contours, lot sizes, lot dimensions, easements, covenants, trees, streetlights, substations, pit and pillars are preliminary only and are subject to final survey. For final Lot numbers refer registered deposited plans (DP).



file name: 307857CG200.dwg, layout name: CG20, created by: Carl O'H, file location: G:\307857\307857\1\civil\ALCAD\Lot_Distorsure_Plan\A4\Lot_1342.dwg, plot date: 03/09/2021 4:05 PM, Sheet 1 of 1

Jumping Creek

Home is here.

LOT 1343

LOT PLAN LAYOUT



LOT LAYOUT - SCALE 1:400 (A4)

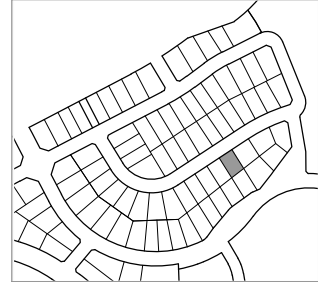
REVISION --- DATE

LEGEND

- | | | | |
|------------------------------------|------------------------|--|-------|
| LOT BOUNDARY | — | WATER SERVICES TRENCH (Electricity, NBN) | — W — |
| FINISHED SURFACE CONTOUR (0.2m) | —590.0— | STREETLIGHT | ☀ |
| BLOCK AREA / BOUNDARY LENGTH | 400m ² 4.54 | SUBSTATION | ⊞ |
| BLOCK BEARING | 90°00'00" | ELECTRICAL PILLAR / PIT | ⊞ |
| EASEMENT (Sewer and/or Stormwater) | --- | NBN PIT | ⊞ |
| DRAINAGE / STRUCTURE | — SW — | DRIVEWAY LOCATION | ⊞ |
| SEWER / STRUCTURE | — S — | | |
| SEWER RISING MAIN | — SRM — | | |

- | | |
|---|---------|
| STREET TREE/EXISTING TREE | ⊙ |
| PATH (1.5m wide) | — |
| RETAINING WALL | — |
| BAL 29 LINE | — BAL — |
| 1.8m HIGH COLOURBOND FENCE BY DEVELOPER | — |

LOCALITY PLAN



DRAFT

© Spiire Australia Pty Ltd All Rights Reserved
 This document is produced by Spiire Australia Pty Ltd solely for the benefit of and use by the client in accordance with the terms of the retainer. Spiire Australia Pty Ltd does not and shall not assume any responsibility or liability whatsoever to any third party arising out of any use or reliance by third party on the content of this document.

Disclaimer: All care has been taken in the preparation of this material. No responsibility is taken by the vendor for any errors or omissions, and details may be subject to change. Artwork, images and plans are artists impressions only and are not relied on as a definitive reference. All road designs, contours, lot sizes, lot dimensions, easements, covenants, trees, streetlights, substations, pit and pillars are preliminary only and are subject to final survey. For final Lot numbers refer registered deposited plans (DP).



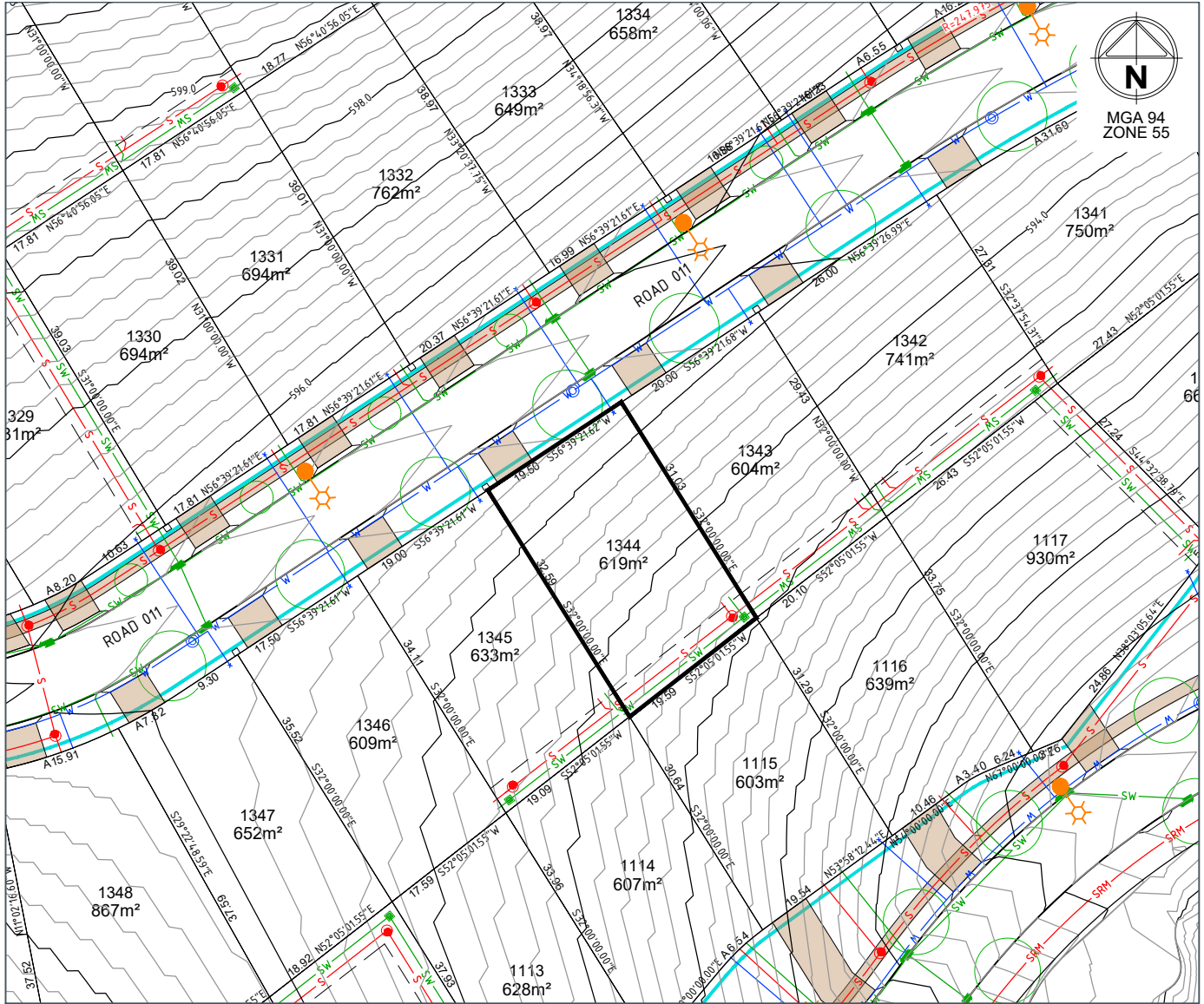
file name: 307857CG200.dwg; layout name: CG20; created by: Carl Oth; file location: G:\307857\307857\Drawings\CG20\Lot_Distorsure_Plan\A4\Lot_Plan.dwg; date: 03/09/2021 4:06 PM; Sheet 1 of 1

Jumping Creek

Home is here.

LOT 1344

LOT PLAN LAYOUT



LOT LAYOUT - SCALE 1:400 (A4)

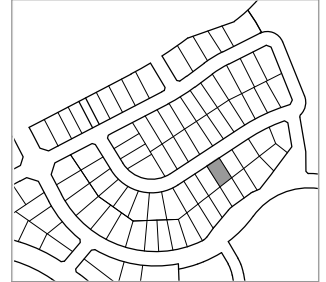
REVISION ---- DATE

LEGEND

LOT BOUNDARY		WATER SERVICES TRENCH (Electricity, NBN)	
FINISHED SURFACE CONTOUR (0.2m)		STREETLIGHT	
BLOCK AREA / BOUNDARY LENGTH	400m ² 4.54	SUBSTATION	
BLOCK BEARING	90°00'00"	ELECTRICAL PILLAR / PIT	
EASEMENT (Sewer and/or Stormwater)		NBN PIT	
DRAINAGE / STRUCTURE		DRIVEWAY LOCATION	
SEWER / STRUCTURE			
SEWER RISING MAIN			

STREET TREE/EXISTING TREE	
PATH (1.5m wide)	
RETAINING WALL	
BAL 29 LINE	
1.8m HIGH COLOURBOND FENCE BY DEVELOPER	

LOCALITY PLAN



DRAFT

© Spiire Australia Pty Ltd All Rights Reserved
 This document is produced by Spiire Australia Pty Ltd solely for the benefit of and use by the client in accordance with the terms of the retainer. Spiire Australia Pty Ltd does not and shall not assume any responsibility or liability whatsoever to any third party arising out of any use or reliance by third party on the content of this document.

Disclaimer: All care has been taken in the preparation of this material. No responsibility is taken by the vendor for any errors or omissions, and details may be subject to change. Artwork, images and plans are artists impressions only and are not relied on as a definitive reference. All road designs, contours, lot sizes, lot dimensions, easements, covenants, trees, streetlights, substations, pit and pillars are preliminary only and are subject to final survey. For final Lot numbers refer registered deposited plans (DP).



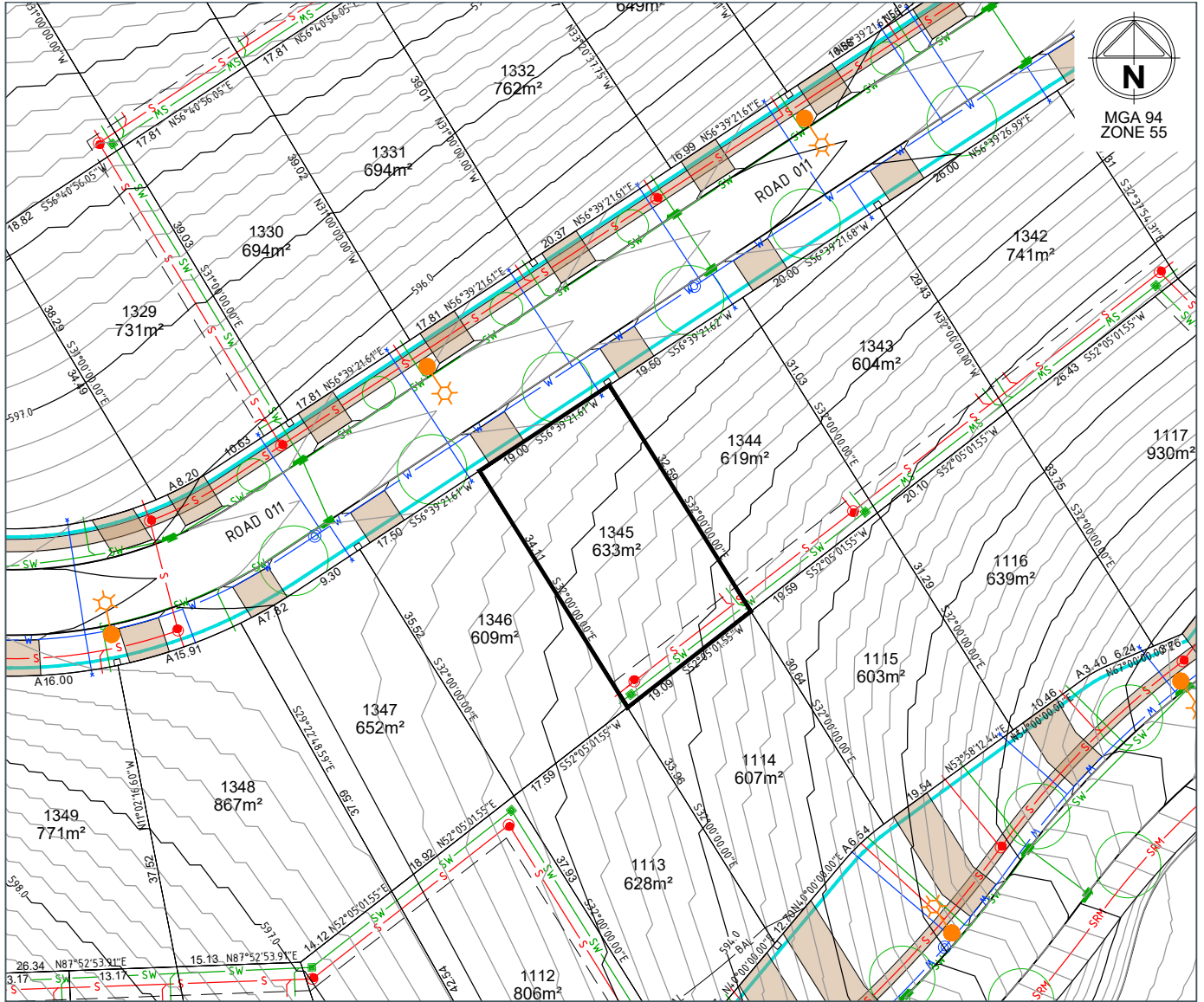
file name: 307957CG200.dwg, layout name: CG200, created by: Carl O'H., file location: G:\3\307957\CG200\Lot_Distorsure_Plan\A4\Lot_Lot Layout - Scale 1:400 (A4) of Sheets

Jumping Creek

Home is here.

LOT 1345

LOT PLAN LAYOUT



LOT LAYOUT - SCALE 1:400 (A4)

REVISION --- DATE

LEGEND

- LOT BOUNDARY
- FINISHED SURFACE CONTOUR (0.2m)
- BLOCK AREA / BOUNDARY LENGTH
- BLOCK BEARING
- EASEMENT (Sewer and/or Stormwater)
- DRAINAGE / STRUCTURE
- SEWER / STRUCTURE
- SEWER RISING MAIN
- WATER SERVICES TRENCH (Electricity, NBN)
- STREETLIGHT
- SUBSTATION
- ELECTRICAL PILLAR / PIT
- NBN PIT
- DRIVEWAY LOCATION

- W
- SW
- S
- SRM

- STREET TREE/EXISTING TREE
- PATH (1.5m wide)
- RETAINING WALL
- BAL 29 LINE
- 1.8m HIGH COLOURBOND FENCE BY DEVELOPER

- BAL

LOCALITY PLAN



DRAFT

© Spiire Australia Pty Ltd All Rights Reserved
 This document is produced by Spiire Australia Pty Ltd solely for the benefit of and use by the client in accordance with the terms of the retainer. Spiire Australia Pty Ltd does not and shall not assume any responsibility or liability whatsoever to any third party arising out of any use or reliance by third party on the content of this document.

Disclaimer: All care has been taken in the preparation of this material. No responsibility is taken by the vendor for any errors or omissions, and details may be subject to change. Artwork, images and plans are artists impressions only and are not relied on as a definitive reference. All road designs, contours, lot sizes, lot dimensions, easements, covenants, trees, streetlights, substations, pit and pillars are preliminary only and are subject to final survey. For final Lot numbers refer registered deposited plans (DP).



file name: 307857CE000.dwg; layout name: CE005; created by: Carl Oth; file location: G:\307857\307857\civil\ALCAD\Lot_Distorsure_Plan\ALCAD; plot date: 03/09/2021 4:08 PM; Sheet 1 of 1

Jumping Creek

Home is here.

LOT 1346

LOT PLAN LAYOUT



LOT LAYOUT - SCALE 1:400 (A4)

REVISION --- DATE

LEGEND

LOT BOUNDARY	—	WATER SERVICES TRENCH (Electricity, NBN)	— W —
FINISHED SURFACE CONTOUR (0.2m)	—590.0—	STREETLIGHT	☀
BLOCK AREA / BOUNDARY LENGTH	400m² 4.54	SUBSTATION	☐
BLOCK BEARING	90°00'00"	ELECTRICAL PILLAR / PIT	☐
EASEMENT (Sewer and/or Stormwater)	---	NBN PIT	☐
DRAINAGE / STRUCTURE	— SW —	DRIVEWAY LOCATION	☐
SEWER / STRUCTURE	— S —		
SEWER RISING MAIN	— SRM —		

STREET TREE/EXISTING TREE	○
PATH (1.5m wide)	—
RETAINING WALL	— BAL —
BAL 29 LINE	—
1.8m HIGH COLOURBOND FENCE BY DEVELOPER	—

LOCALITY PLAN



DRAFT

© Spiire Australia Pty Ltd All Rights Reserved
 This document is produced by Spiire Australia Pty Ltd solely for the benefit of and use by the client in accordance with the terms of the retainer. Spiire Australia Pty Ltd does not and shall not assume any responsibility or liability whatsoever to any third party arising out of any use or reliance by third party on the content of this document.

Disclaimer: All care has been taken in the preparation of this material. No responsibility is taken by the vendor for any errors or omissions, and details may be subject to change. Artwork, images and plans are artists impressions only and are not relied on as a definitive reference. All road designs, contours, lot sizes, lot dimensions, easements, covenants, trees, streetlights, substations, pit and pillars are preliminary only and are subject to final survey. For final Lot numbers refer registered deposited plans (DP).



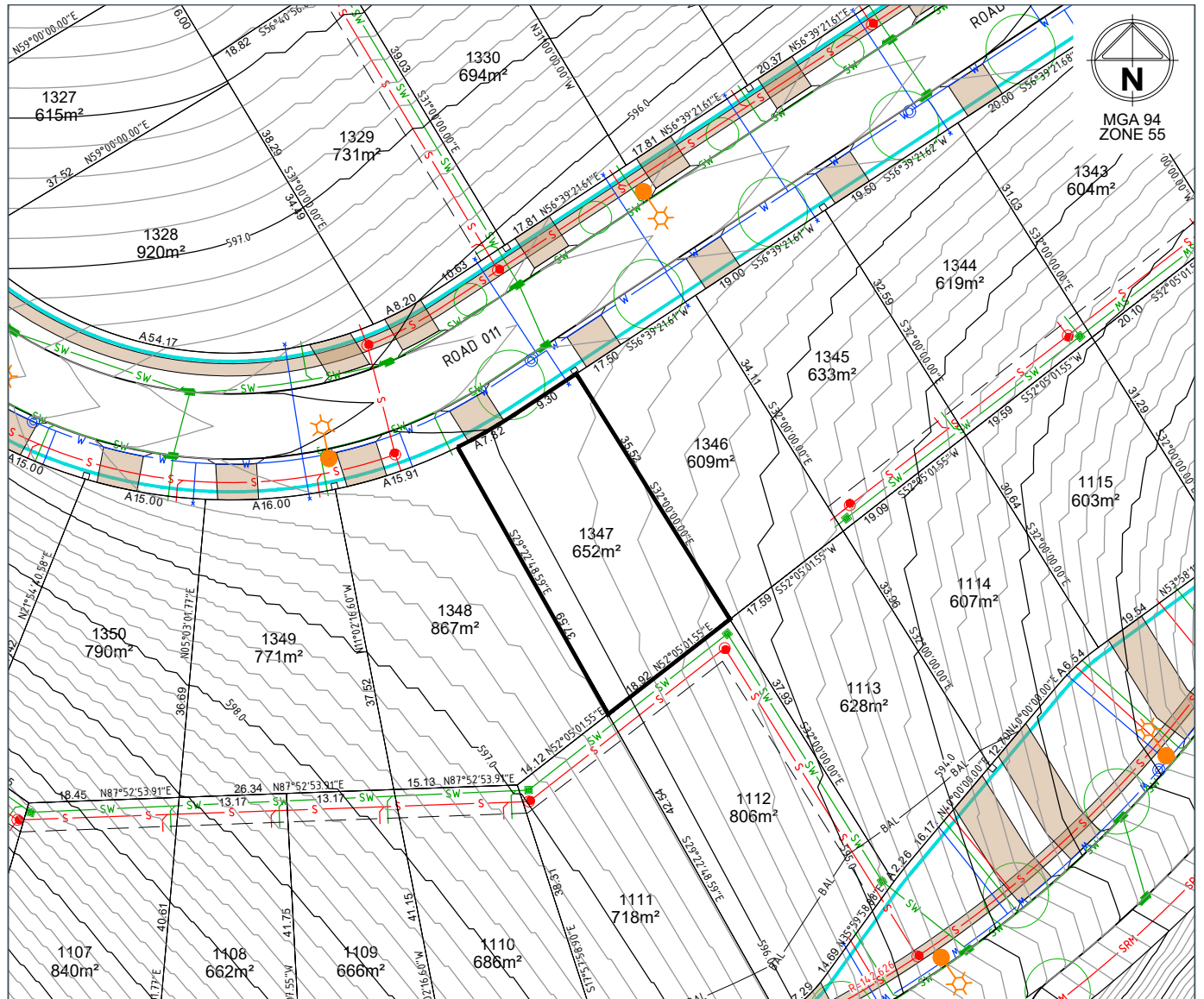
file name: 307857CG200.dwg; layout name: CG206; created by: Carl O'H; file location: G:\307857\307857\Drawings\CG206\Lot_Distorsure_Plan\A4\Lot_Distorsure_Plan_A4.dwg; plot date: 03/09/2021 4:09 PM; Sheet 1 of 1

Jumping Creek

Home is here.

LOT 1347

LOT PLAN LAYOUT



LOT LAYOUT - SCALE 1:400 (A4)

REVISION --- DATE

LEGEND

LOT BOUNDARY	—	WATER SERVICES TRENCH (Electricity, NBN)	— W —
FINISHED SURFACE CONTOUR (0.2m)	—590.0—	STREETLIGHT	☀
BLOCK AREA / BOUNDARY LENGTH	400m ² 4.54	SUBSTATION	☐
BLOCK BEARING	90°00'00"	ELECTRICAL PILLAR / PIT	⊠
EASEMENT (Sewer and/or Stormwater)	---	NBN PIT	⊠
DRAINAGE / STRUCTURE	— SW —	DRIVEWAY LOCATION	▣
SEWER / STRUCTURE	— S —		
SEWER RISING MAIN	— SRM —		

STREET TREE/EXISTING TREE	○
PATH (1.5m wide)	—
RETAINING WALL	— BAL —
BAL 29 LINE	— BAL —
1.8m HIGH COLOURBOND FENCE BY DEVELOPER	— SRM —

LOCALITY PLAN



DRAFT

© Spiire Australia Pty Ltd All Rights Reserved
 This document is produced by Spiire Australia Pty Ltd solely for the benefit of and use by the client in accordance with the terms of the retainer. Spiire Australia Pty Ltd does not and shall not assume any responsibility or liability whatsoever to any third party arising out of any use or reliance by third party on the content of this document.

Disclaimer: All care has been taken in the preparation of this material. No responsibility is taken by the vendor for any errors or omissions, and details may be subject to change. Artwork, images and plans are artists impressions only and are not relied on as a definitive reference. All road designs, contours, lot sizes, lot dimensions, easements, covenants, trees, streetlights, substations, pit and pillars are preliminary only and are subject to final survey. For final Lot numbers refer registered deposited plans (DP).

