



GOLDEN BAY RESERVE



HOMESTEAD LOTS

RELEASE 5J

LEGEND

- Homestead Lots
- Level Area by Developer
- Previous Release
- Existing Residential Development
- Multi Dwelling Site
- Commercial/Mixed Use Residential Areas
- Sales and Information Centre
- 6.10 Lot Height
- LDP Building Envelope & Area
- Retaining Wall
- Footpath
- # Bushfire Attack Level Rating (BAL)
- Retained by the Department of Communities



AWARD WINNING
COMMUNITY

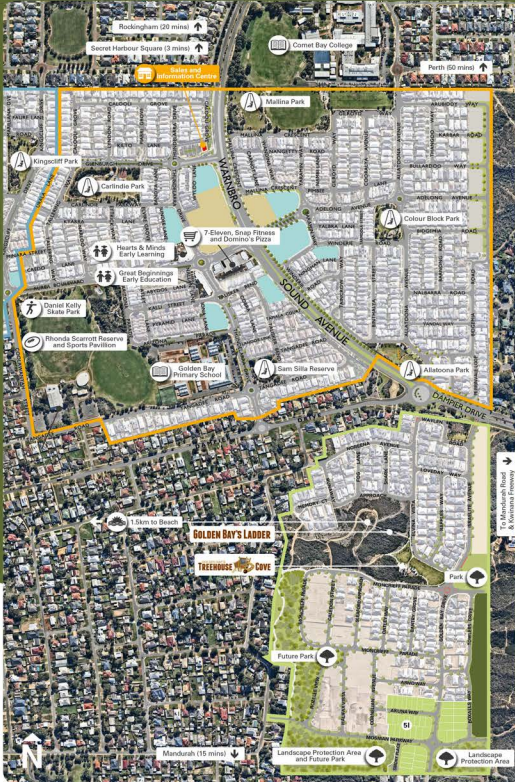


DevelopmentWA

PEET



GOLDEN BAY RESERVE



HOMESTEAD LOTS RELEASE 5K

LEGEND

- Homestead Lots
- Level Area by Developer
- Previous Release
- Existing Residential Development
- Multi Dwelling Site
- Commercial/Mixed Use Residential Areas
- Sales and Information Centre
- 6.10 Lot Height
- LDP Building Envelope & Area
- Retaining Wall
- Footpath
- # Bushfire Attack Level Rating (BAL)
- Retained by the Department of Communities



The information shown on this plan has been prepared with care, however it is subject to change and cannot form part of any offer or contract other than to identify the lot number and location of the block being purchased. Whilst every reasonable care has been taken in preparing this information, the seller or its representative or agent cannot be held responsible for any inaccuracies. Interested parties must be sure to undertake their own independent enquiries. Lot information is subject to survey and Titles Office approval.

MNG ref: 94134sa-505c.afpub date: 22/08/2025 @copyright

AWARD WINNING
COMMUNITY

