





# GLENDALOUGH GREEN

We acknowledge the Traditional Owners  
of Country on the lands that we are on throughout  
Australia. We recognise Traditional Owners and  
Custodians continuing connection to land,  
waters, culture and communities. We pay respect  
to their Elders past and present.



Something new,  
something different, has arrived  
in Glendalough











GLENDALOUGH GREEN.  
 REFINED, INNER-URBAN  
 LIVING ON THE EDGE  
 OF NATURE, AND THE  
 EDGE OF CONVENIENCE.



UPLIT TREE AT ENTRY. Glendalough Green 6016

MADE DIFFERENT,  
 MADE FOR YOU,  
 MADE WITH THOUGHTFUL  
 FOCUS ON THE WELLBEING  
 AND QUALITY OF LIFE



BOB HAWKE COLLEGE. 200 Roberts Rd, Subiaco WA 6008 - 4.1KM

Glendalough Green is made different. It's in the attention to detail, the human scale of the architecture, the design with its thoughtful focus on the wellbeing and quality of life of everyone who lives there. It's the emphasis on the things that matter to you – family, community, the environment and shared values.

It all makes for a different kind of lifestyle. A central communal open space will bring the Glendalough Green community together, with play equipment, barbecues and picnic tables on the lawn under the shade of mature trees.

All new residents will receive membership to the Herdsman Lake Discovery Centre, to encourage care for the local environment and

connect residents to the wider community - another example of why life at Glendalough Green will be so special and meaningful.

From your front door there is not one, but three local cafes within walking distance. Just 500m away is Glendalough train station.

And that's just for starters. Just up the street is IGA, and in less than ten minutes, you can be shopping for fresh essentials at Herdsman Market, browsing the eclectic boutiques and eateries of Oxford Street, hitting Westfield Innaloo, indulging in a little retail therapy at Floreat Forum, or shopping, dining and exploring vibrant Subiaco.

There are parks, tennis courts, bowling greens and cinemas. Nearby, Wembley, Floreat, Leederville, Mt Hawthorn and Subiaco offer endless choices of cafes, bars, pubs and restaurants.

And for families, several schools are within easy reach of Glendalough Green.

- Lake Monger Primary School
- Chrysalis Montessori School
- Bold Park Community School (Wembley Campus)
- Wembley Primary School
- Hale School
- Newman College
- Bob Hawke College

All of this, just five kilometres from Perth city.





WEMBLEY

HERDSMAN  
LAKE EAST  
PLAYGROUND

CHURCHLANDS

HERDSMAN LAKE

GLENDALOUGH  
OPEN SPACE

FLOREAT BEACH



HARBORNE ST

PARKLAND RD



< GLENDALOUGH TRAIN STATION - 500M

< PARKLAND RD BUS STOP - 1KM

< HARBORNE ST BUS STOP - 1KM

< WALTERS DR BUS STOP - 3KM

< WESTFIELD INNALOO - 3KM

< KARRINYUP SHOPPING CENTRE - 7.5KM

LEEDERVILLE

CHRYSLIS  
MONTESSORI  
SCHOOL

LAKE MONGER

HARBORNE ST  
BUS STOP

PERTH  
CITY

LAKE MONGER  
PRIMARY SCHOOL

GLENDALOUGH  
SHOPPING  
CENTRE

GLENDALOUGH  
OPEN SPACE

BOB HAWKE COLLEGE

SUBIACO

SWAN  
RIVER

MITCHELL FWY

HARBORNE ST

JON SANDERS DR

PARKLAND RD



✓ HASLER ST BUS STOP - 1KM

✓ OSBORNE PARK BUSINESS DISTRICT - 500M

✓ CHURCHLANDS HIGH SCHOOL - 3KM



GLENDALOUGH GREEN MAY BE CLOSE TO URBAN CONVENIENCE, BUT IT'S ALSO VERY CLOSE TO NATURE.



Herdsman Lake. Jon Sanders Dr, Herdsman WA 6017 - 250M

HERDSMAN LAKE

Within easy cycling distance are the large urban wetlands and fringing parklands of Lake Monger and Herdsman Lake; each one a regional recreational reserve, each one offering beautiful natural spaces for birdwatching, picnicking, trail walking, cycling and running.

Even closer to home is Glendalough Open Space. From your front door, follow the meandering footpath down to the gate directly accessing this peaceful stretch of green parkland that can never be built out. It will be an extension of your backyard forever.

This is what urban living feels like, Perth style.

Noogenboro (Herdsman Lake) is a magnificent environmentally significant 160ha wetland oasis right on your doorstep - the largest in inner Perth. It's an important wildlife haven, and a sanctuary and breeding ground for a wide range of waterbirds and migratory birds. You'll easily see them, wading amongst the rushes, paperbarks and flooded gum trees.

It's also a haven for anyone who loves to connect with nature, whether it's wandering along the winding pathways, trails and boardwalks, enjoying a picnic, or jogging or cycling the 7km loop around the whole lake.

As a new resident of Glendalough Green, you will receive free annual membership to The Herdsman Lake Discovery Centre, where you'll learn more about the extraordinary surroundings and have opportunities to interact with the regular research being conducted there.

Herdsman Lake and the adjoining Glendalough Open Space are an important part of Perth's sustainability and environment story. And living at Glendalough Green means you can be part of it.

HERDSMAN LAKE IS HOME TO SOME OF THE MOST VARIED AND EASILY OBSERVED WATERBIRDS OF ANY LAKE IN SOUTHWESTERN AUSTRALIA.

UPLIT ENTRY TREE. Glendalough Green 6016



Herdsman Lake. Jon Sanders Dr, Herdsman WA 6017 - 250M









**LAKE MONGER.** Dodd St, Wembley WA 6014 - 900M



**ABOVE:**  
**GLENDALOUGH TRAIN STATION.** Osborne Park WA 6017 - 500M

**LEFT:**  
**ONE SUBIACO MARKETS.** 24 Rokeby Rd, Subiaco WA 6008 - 3.2KM







GLENDALOUGH GREEN  
WILL BE WOVEN INTO THE  
CITY'S FABRIC, EVERY  
THREAD A DIFFERENT TALE...



VIBRANT ENERGY

There's a buzz you get when you stroll down certain inner-urban Perth strips. There's a vibrancy that comes from the colours, the sound of laughter, the anticipation, and the aromas of coffee by morning and a riot of different cuisines by night. Bars, restaurants, pubs, theatres, cinemas – there's plenty of nightlife

not far from Glendalough Green, from Oxford Street in Leederville to Rokeby Road in Subiaco; from the eateries and cinemas at Westfield Innaloo to the iconic pubs in Wembley, Floreat and Mt Hawthorn. And let's not forget, Northbridge is less than ten minutes away. So you're never far from a great night out.

...WHERE EVERY STREET  
CORNER SINGS A  
DIFFERENT TUNE.

WALMSLEY LANE. Subiaco WA 6008 - 3.7KM



PINCHOS BAR DE TAPAS. Oxford Street, Leederville WA 6014 - 3.5KM





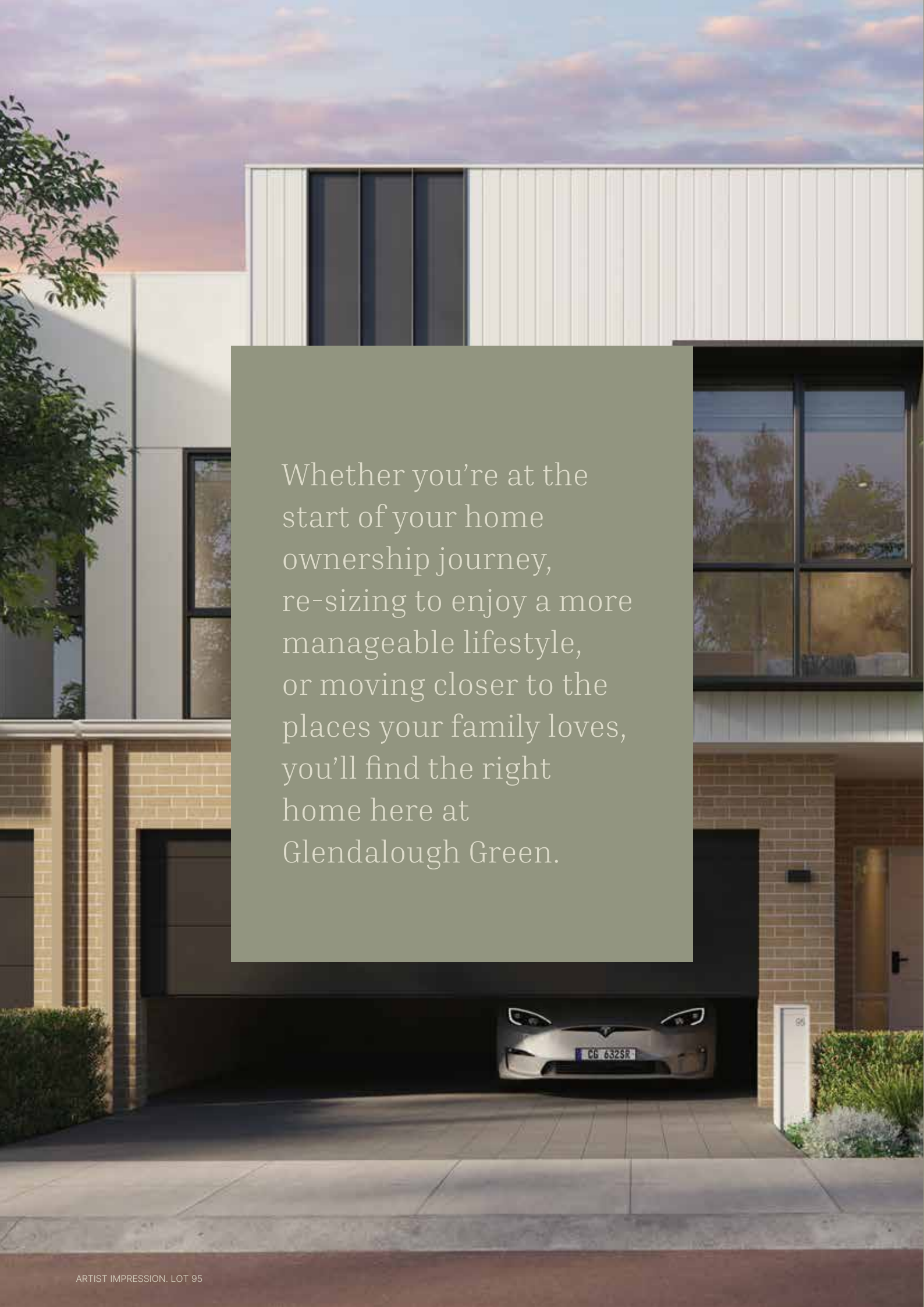












Whether you're at the start of your home ownership journey, re-sizing to enjoy a more manageable lifestyle, or moving closer to the places your family loves, you'll find the right home here at Glendalough Green.



YOU'LL FIND THE RIGHT HOME HERE AT GLENDALOUGH GREEN, WHERE TOWNHOUSES ARE MADE FUTURE READY.














Sustainability features  
at Glendalough Green  
reflect your personal  
commitment to a  
greener environment,  
with some townhouses  
rated at seven  
NatHERS stars.

ARTIST IMPRESSION, LOT 33

ARTIST IMPRESSION, LOT 30



THE MEWS-STYLE ARCHITECTURE OF  
GLENDALOUGH GREEN HAS BEEN  
DESIGNED TO OFFER A CHOICE OF  
LIFESTYLES, WITH A RANGE OF HOME  
DESIGNS PROVIDING DIVERSITY,  
INDIVIDUALITY AND AESTHETIC  
INTEREST, ADDING TO THE APPEAL OF  
THE STREETScape.





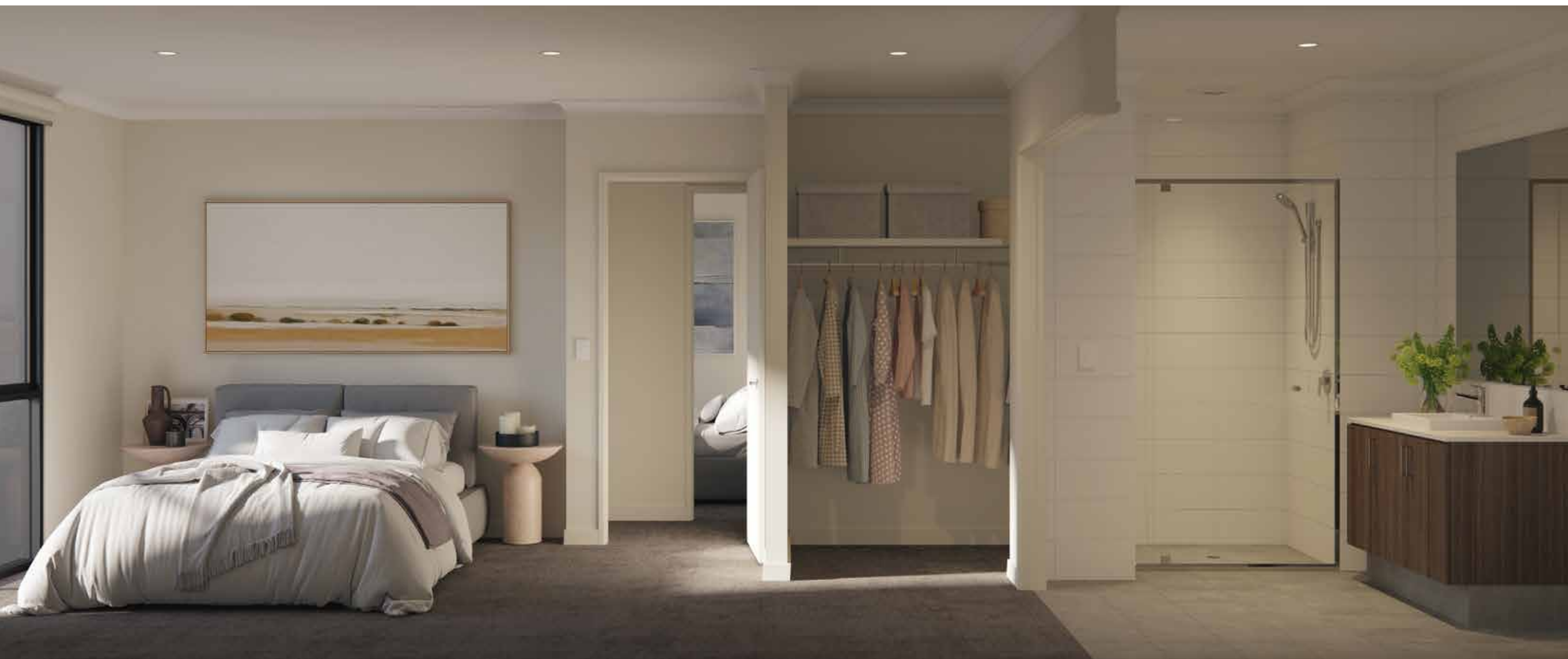




















ARTIST IMPRESSION. LOT 94-100 STREETSCAPE – CENTRAL TOWNHOUSE BRICK COURTYARD WALLS



GLENDALOUGH OPEN SPACE



HARBORNE STREET

GLENDALOUGH OPEN SPACE LINK

CENTRAL COMMUNAL OPEN SPACE

ENTRY PRECINCT

## REFINED LIVING, MADE DIFFERENT

The mews-style architecture and tranquil landscaping design of Glendalough Green has been designed to offer a choice of lifestyles and reflect the laid-back West Australian lifestyle.

A range of home designs set among calmed, shady neighbourhood streets will provide diversity, individuality and interest to the streetscape, while the communal open spaces and

gardens will include a variety of trees, shady open grassed areas, a citrus garden and waterwise native plantings that will attract local birdlife.



ARTIST IMPRESSION. CENTRAL OPEN SPACE



THOUGHTFULLY  
SELECTED INTERNAL  
AND EXTERNAL  
COLOUR SCHEMES



ARTIST IMPRESSION. LOT 33

PREMIUM  
TOWNHOUSE LIVING



ARTIST IMPRESSION. LOT 95

TOWNHOUSE FEATURES INCLUDE:

- Attractive, textural facades featuring brickwork on the lower level
- Ducted air conditioning throughout
- 20mm stone benchtops in the kitchen, bathroom and ensuite
- Thoughtfully selected internal and external colour schemes that harmonise with the balustrades, fencing and window frames
- Engineered timber flooring on the ground floor
- Floor tiles to wet areas and full height tiles in bathroom and master ensuite
- Stainless steel kitchen appliances with gas cook top
- Feature kitchen sink mixer in Chrome
- Feature splashback tiles in the kitchen and laundry
- LED lighting throughout entry, living, hallways, kitchen, bedrooms, bathroom, ensuite and study areas
- Roller blinds to windows
- Semi-frameless shower screens
- Landscaped front and rear spaces, with outdoor storage and Colorbond fencing
- Trilock front entry door
- Letterbox, clothesline, front and rear landscaping included





At Peet, we create communities where people find their home, all across Australia.

We're industry experts in defining future places of belonging. Places that offer the value of choice, delivering different lifestyles in townhouses, apartments and family homes.

With each community, we add to an enduring legacy of creating connected, liveable places built for today and future proofed for tomorrow. Our extensive experience guides how we work with our communities to understand and respond to what they need, designing places that are both socially and environmentally sustainable.

Each Peet address becomes a meaningful part of someone's story. It's where houses turn into homes, where lives take shape in local routines and friendly faces; it's the special place in the world where you belong.

We do it by imagining how people actually live.

People like you. People like us.

Now, we're known for communities built to last. Built on the solid foundation of our ASX listing and almost 130 years of placemaking.



Tokyo Gas Real Estate Australia, a subsidiary of Tokyo Gas, is committed to delivering sustainable property developments in Australia.

Their involvement in Glendalough Green highlights a dedication to quality and environmental responsibility. This collaboration will add to their portfolio of thoughtfully designed developments that complement the local community and natural surroundings.



Established in 1884, CCN is one of the oldest architectural practices in Australia. The firm has gained recognition for its diverse portfolio, encompassing a wide range of project sectors. With a team of passionate and talented architects, interior designers and support staff, the studio has built an enduring reputation for delivering high-quality, award-winning projects that contribute positively to the built environment.



CLE Town Planning + Design has been at the forefront of Perth's growth and development for almost half a century. They have shaped the city and its metropolitan area through creative, clever and skilled planning and design outcomes to large-scale infill and greenfield projects, precinct and centre planning and major development applications.



The team of environmental consultants and landscape architects at Emerge Associates bring creativity and passion to develop innovative environments of real significance, delivering results that are definable both for their practicality and creativity. They work within urban environment, architecture, recreation, infrastructure and other development projects, collaborating closely with the client from site assessment to final handover.

All care has been taken in the preparation of this material for marketing purposes only. No responsibility is taken for errors or omissions and details may be subject to change. Intending purchasers should not rely on statements or representations and are advised to satisfy themselves in all respects. Artwork images and plans are artist impressions only and are not to be relied upon as a definitive reference. Prospective buyers are encouraged to refer to the Contract of Sale for full details and to consult with their conveyancer or legal advisor to ensure they fully understand the terms and conditions of their purchase.



