

PSM 191027  
 E: 495937.616  
 N: 7003052.339  
 RL: 8.767m  
 GDA94

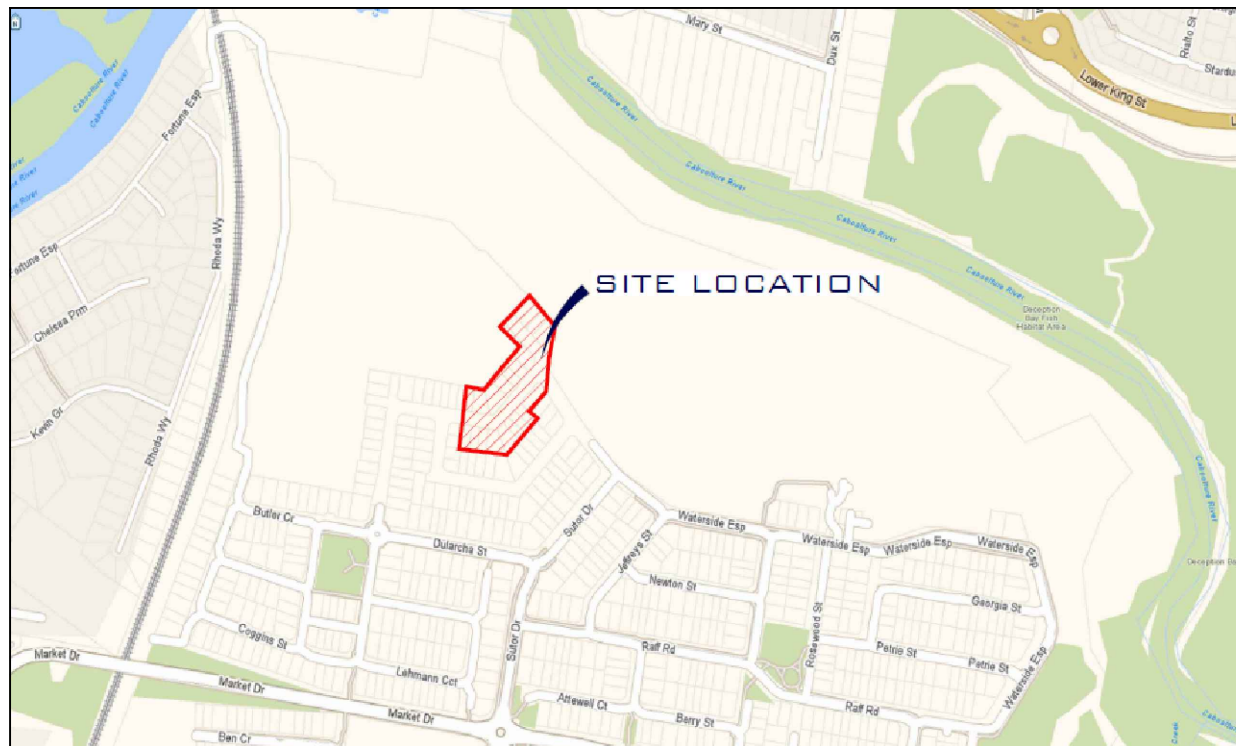


# UNITYWATER APPROVAL No.: APP-03657

## RIVERBANKS ESTATE STAGE 2C

### MONARCH STREET, CABOOLTURE SOUTH

### OD250 & OD160 PE100 SEWER MAIN



DRAWING INDEX	
DRAWING NUMBER	DESCRIPTION
U-2024-5393-01	LOCALITY PLAN AND DRAWING INDEX
U-2024-5393-02	SEWER RETICULATION LAYOUT PLAN SHEET 1 OF 3
U-2024-5393-03	SEWER RETICULATION LAYOUT PLAN SHEET 2 OF 3
U-2024-5393-04	SEWER RETICULATION LAYOUT PLAN SHEET 3 OF 3
U-2024-5393-05	WATER RETICULATION LAYOUT PLAN SHEET 1 OF 3
U-2024-5393-06	WATER RETICULATION LAYOUT PLAN SHEET 2 OF 3
U-2024-5393-07	WATER RETICULATION LAYOUT PLAN SHEET 3 OF 3

**COORDINATE DATUM NOTE:**  
 HORIZONTAL COORDINATES(E,N) SUPPLIED ARE MAPPING GRID OF AUSTRALIA(MGA),  
 ZONE 56 BASED ON THE UNIVERSAL TRANSVERSE MERCATOR PROJECTION AND THE  
 GEOCENTRIC DATUM OF AUSTRALIA 1994.

**REGISTERED SURVEYOR'S CERTIFICATION**

I, Angela Maragaret Dahn, hereby certify that the vertical and horizontal locations and dimensions shown on this plan are a true and correct record and were located by survey.

*Angela Dahn*  
 Registered Surveyor (QLD)(sig.) Reg. Surveyor No. 05428 Date: 19/05/2025

**ENGINEER'S CERTIFICATION**

I, GLENN AINSWORTH, hereby certify that:

- The information contained in this drawing / document is in compliance with approved drawings and design.
- The new water and sewerage works defined by this drawing have been designed and constructed in accordance with the SEQ Code.
- This represents an accurate record of as-constructed works
- I accept responsibility for the information contained in this drawing / document.

*Glenn Ainsworth*  
 RPEQ (signature) RPEQ No. 19204 Date: 01/07/25

**AS CONSTRUCTED**

<b>A1</b>	INDEX	DATE	REVISIONS	DRAWN	CHECKED	PASSED	INITIALS	DATE
	0	19/05/2025	AS CONSTRUCTED	DM	A Dahn	A Dahn	PASSED	AMD

**Unitywater**

UNITYWATER APPROVAL No.: APP-03657  
 RIVERBANKS STAGE 2C  
 AS CONSTRUCTED  
 LOCALITY PLAN & INDEX OF DRAWINGS

SHEET 1 OF 7 SHEETS	SCALE NOT TO SCALE
REVISION DATE 19/05/2025	REVISION 0
DISCIPLINE CODE C	
DRAWING NO. U-2024-5393-01	

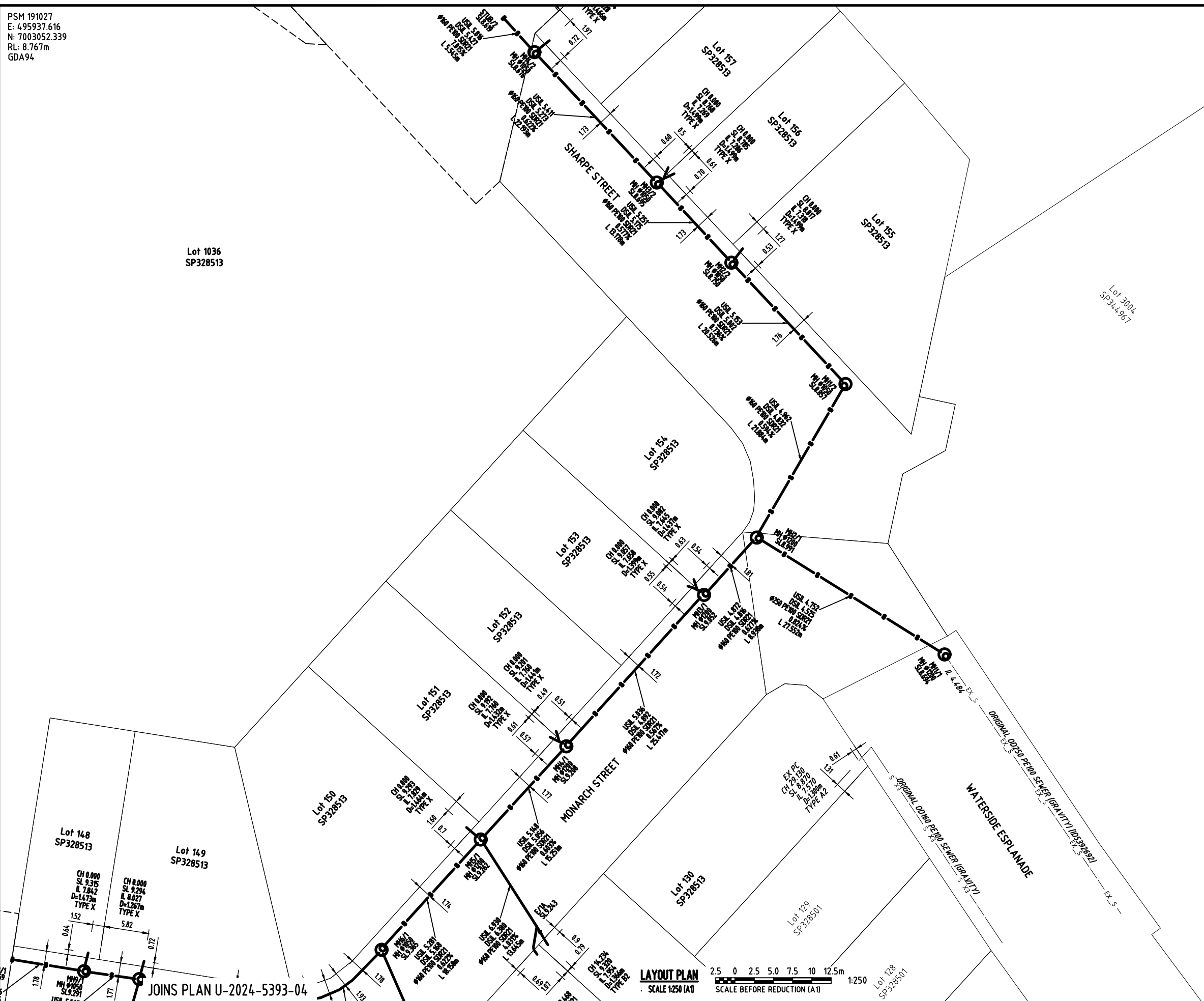
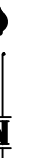
PSM 191027  
 E: 495937.616  
 N: 7003052.339  
 RL: 8.767m  
 GDA94

**LEGEND: ORIGINAL SERVICES**

- ORIGINAL MANHOLE 1050φ
- ORIGINAL OD160 PE100 SEWER MAIN (GRAVITY)
- ORIGINAL DN100 AC WATERMAIN
- ORIGINAL HYDRANT

**LEGEND: NEW SERVICES**

- MAINTENANCE SHAFT [SMARTSTREAM] (600φ LMDPE TYPE) WITH 300φ RISER
- MANHOLE [CAST-INSITU] (CALCAREOUS CONCRETE)
- MANHOLE [SMARTSTREAM] (600φ LMDPE TYPE)
- OD160 PE100 SEWER MAIN (GRAVITY)
- OD125 PE100 SEWER MAIN (GRAVITY)



**REGISTERED SURVEYOR'S CERTIFICATION**  
 I, Angela Margaret Dahn, hereby certify that the vertical and horizontal locations and dimensions shown on this plan are a true and correct record and were located by survey.  
 Registered Surveyor (Q.L.D.) Reg. Surveyor No. 05428 Date: 19/05/2025

**ENGINEER'S CERTIFICATION**  
 I, GLENN AINSWORTH, hereby certify that:  
 1. The information contained in this drawing / document is in compliance with approved drawings and design.  
 2. The new water and sewerage works defined by this drawing have been designed and constructed in accordance with the SEQ Code.  
 3. This represents an accurate record of as-constructed works  
 4. I accept responsibility for the information contained in this drawing / document.  
 RPEQ (signature) RPEQ No. 19204 Date: 01/07/25

**AS CONSTRUCTED**

**LAYOUT PLAN**  
 SCALE 1:250 (A1)  
 SCALE BEFORE REDUCTION (A1) 1:250

A1	0	19/05/2025	AS CONSTRUCTED	DM	A Dahn	A Dahn	PASSED	AMD	19/05/2025
	INDEX	DATE	REVISIONS	DRAWN	CHECKED	PASSED	INITIALS	DATE	

**Unitywater**  
 UNITYWATER APPROVAL No: APP-03657  
 RIVERBANKS ESTATE STAGE 2C  
 AS CONSTRUCTED  
 SEWER RETICULATION LAYOUT PLAN SHEET 1 OF 3

SHEET 2 OF 7 SHEETS	SCALE 1:250
REVISION DATE 19/05/2025	REVISION 0
DISCIPLINE CODE C	
DRAWING NO. U-2024-5393-02	

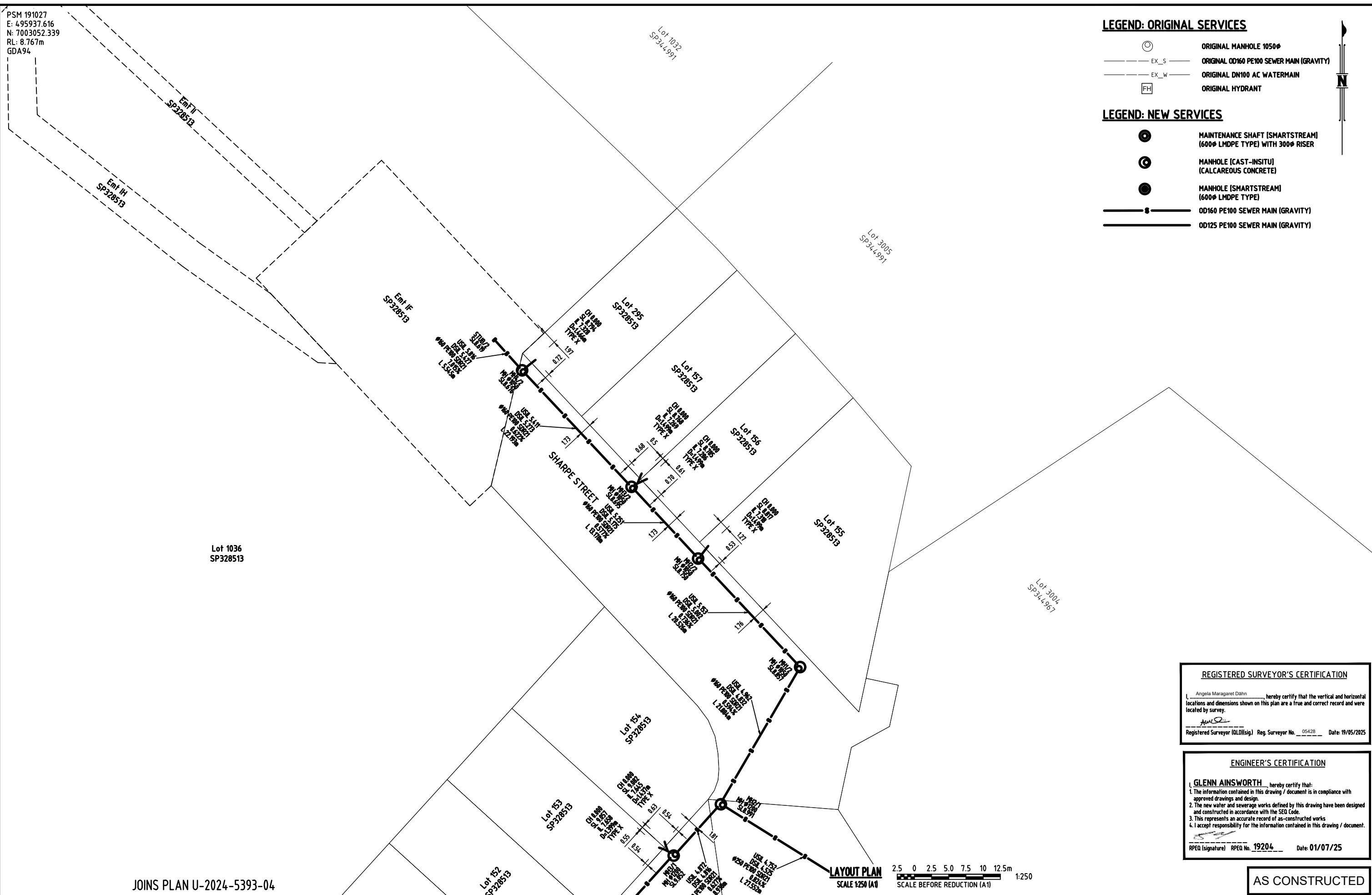
PSM 191027  
 E: 495937.616  
 N: 7003052.339  
 RL: 8.767m  
 GDA94

**LEGEND: ORIGINAL SERVICES**

- ORIGINAL MANHOLE 1050Ø
- ORIGINAL OD160 PE100 SEWER MAIN (GRAVITY)
- ORIGINAL DN100 AC WATERMAIN
- ORIGINAL HYDRANT

**LEGEND: NEW SERVICES**

- MAINTENANCE SHAFT (SMARTSTREAM) (600Ø LMDPE TYPE) WITH 300Ø RISER
- MANHOLE (CAST-INSITU) (CALCAREOUS CONCRETE)
- MANHOLE (SMARTSTREAM) (600Ø LMDPE TYPE)
- OD160 PE100 SEWER MAIN (GRAVITY)
- OD125 PE100 SEWER MAIN (GRAVITY)



JOINS PLAN U-2024-5393-04

LAYOUT PLAN  
 SCALE 1:250 (A1)  
 SCALE BEFORE REDUCTION (A1) 1:250

**REGISTERED SURVEYOR'S CERTIFICATION**  
 I, Angela Maragaret Dahn, hereby certify that the vertical and horizontal locations and dimensions shown on this plan are a true and correct record and were located by survey.  
 Registered Surveyor (QLD)(sig.) Reg. Surveyor No. 05428 Date: 19/05/2025

**ENGINEER'S CERTIFICATION**  
 I, GLENN AINSWORTH, hereby certify that:  
 1. The information contained in this drawing / document is in compliance with approved drawings and design.  
 2. The new water and sewerage works defined by this drawing have been designed and constructed in accordance with the SEQ Code.  
 3. This represents an accurate record of as-constructed works  
 4. I accept responsibility for the information contained in this drawing / document.  
 RPEQ (signature) RPEQ No. 19204 Date: 01/07/25

**AS CONSTRUCTED**

A1	0	19/05/2025	AS CONSTRUCTED	DM	A Dahn	A Dahn	PASSED	AMD	19/05/2025
	INDEX	DATE	REVISIONS	DRAWN	CHECKED	PASSED	INITIALS	DATE	

**Unitywater**  
 UNITYWATER APPROVAL No: APP-03657  
 RIVERBANKS ESTATE STAGE 2C  
 AS CONSTRUCTED  
 SEWER RETICULATION LAYOUT PLAN SHEET 2 OF 3

SHEET 3 OF 7 SHEETS	SCALE 1:250
REVISION DATE 19/05/2025	REVISION 0
DISCIPLINE CODE C	
DRAWING NO. U-2024-5393-03	

PSM 191027  
 E: 495937.616  
 N: 7003052.339  
 RL: 8.767m  
 GDA94

JOINS PLAN U-2024-5393-03

LEGEND: ORIGINAL SERVICES

- ORIGINAL MANHOLE 1050φ
- EX\_S ORIGINAL OD160 PE100 SEWER MAIN (GRAVITY)
- EX\_W ORIGINAL DN100 AC WATERMAIN
- ORIGINAL HYDRANT

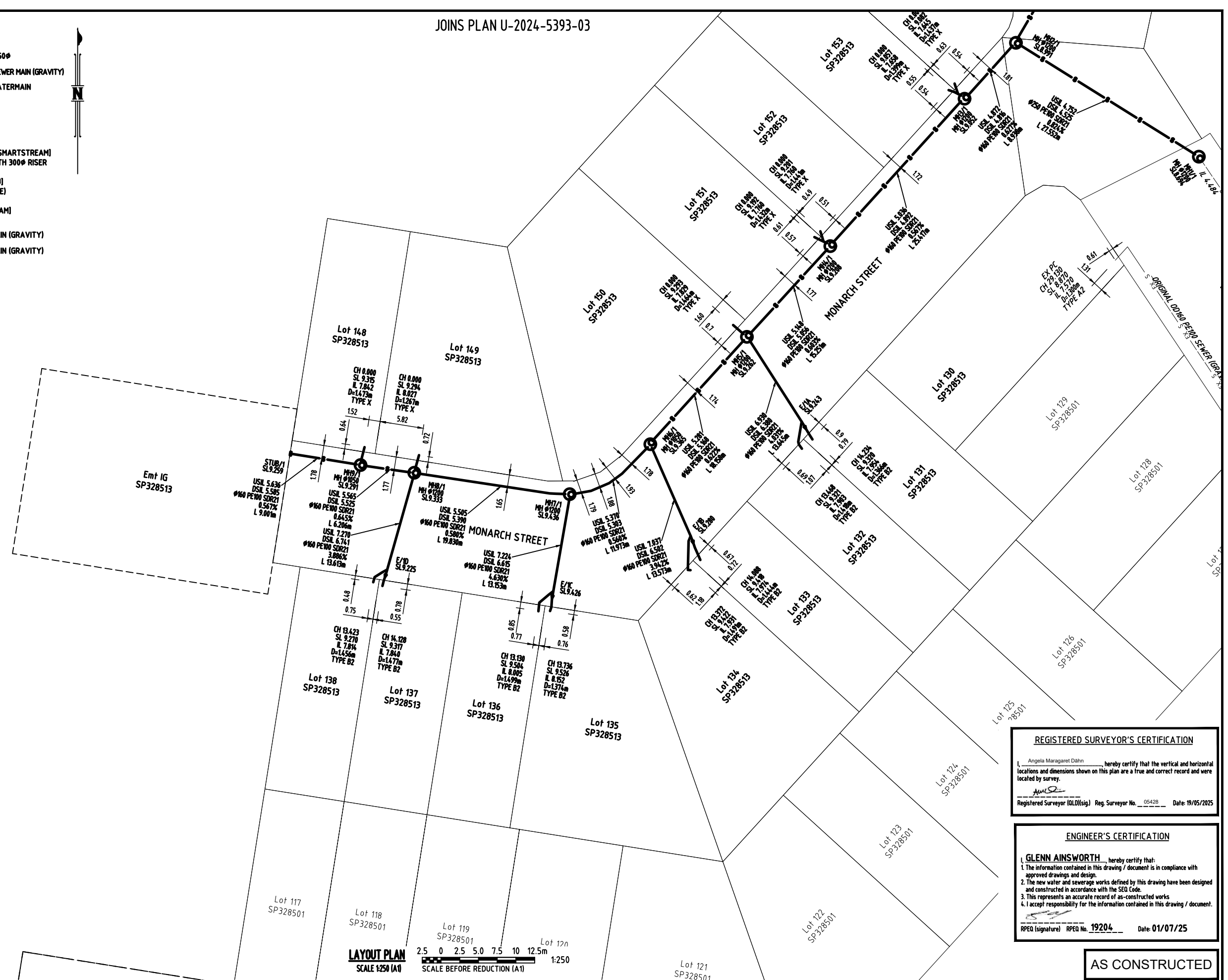
LEGEND: NEW SERVICES

- MAINTENANCE SHAFT [SMARTSTREAM] (600φ LMDPE TYPE) WITH 300φ RISER
- MANHOLE [CAST-INSITU] (CALCAREOUS CONCRETE)
- MANHOLE [SMARTSTREAM] (600φ LMDPE TYPE)
- OD160 PE100 SEWER MAIN (GRAVITY)
- OD125 PE100 SEWER MAIN (GRAVITY)



Lot 1036  
SP328513

Ent IG  
SP328513



LAYOUT PLAN SCALE 1:250 (A1)  
 SCALE BEFORE REDUCTION (A1) 1:250

**REGISTERED SURVEYOR'S CERTIFICATION**  
 I, Angela Maragaret Dahn, hereby certify that the vertical and horizontal locations and dimensions shown on this plan are a true and correct record and were located by survey.  
 Registered Surveyor (Q.L.D.) Reg. Surveyor No. 05428 Date: 19/05/2025

**ENGINEER'S CERTIFICATION**  
GLENN AINSWORTH, hereby certify that:  
 1. The information contained in this drawing / document is in compliance with approved drawings and design.  
 2. The new water and sewerage works defined by this drawing have been designed and constructed in accordance with the SEQ Code.  
 3. This represents an accurate record of as-constructed works.  
 4. I accept responsibility for the information contained in this drawing / document.  
 RPEQ (signature) RPEQ No. 19204 Date: 01/07/25

**AS CONSTRUCTED**

A1	0	19/05/2025	AS CONSTRUCTED	DM	A Dahn	A Dahn	PASSED	AMD	19/05/2025
	INDEX	DATE	REVISIONS	DRAWN	CHECKED	PASSED	INITIALS	DATE	

therefor GROUP

Unitywater

Unitywater

UNITYWATER APPROVAL No: APP-03657  
 RIVERBANKS ESTATE STAGE 2C  
 AS CONSTRUCTED  
 SEWER RETICULATION LAYOUT PLAN SHEET 3 OF 3

SHEET 4 OF 7 SHEETS	SCALE 1:250
REVISION DATE 19/05/2025	REVISION 0
DISCIPLINE CODE C	
DRAWING NO. U-2024-5393-04	

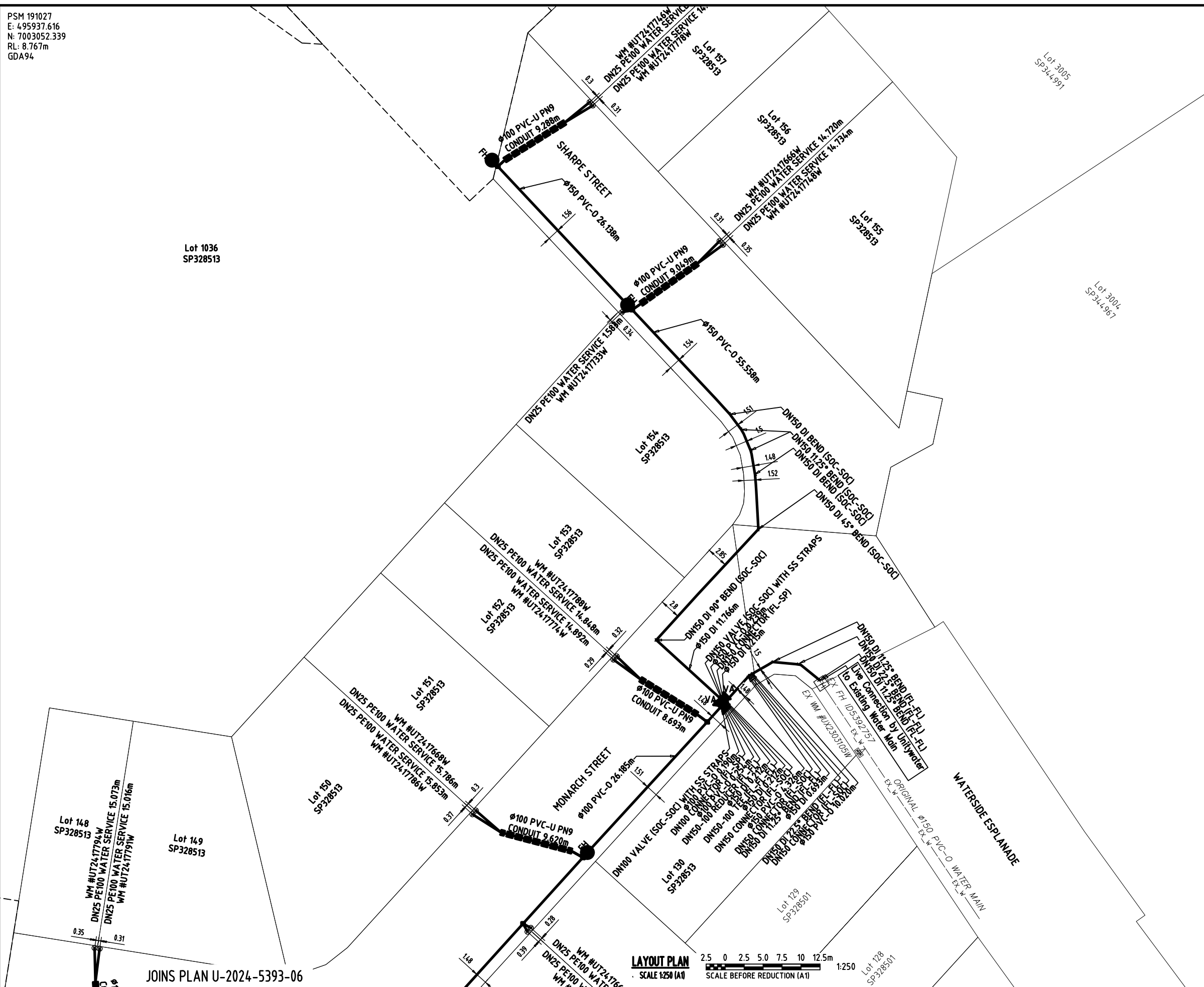
PSM 191027  
 E: 495937.616  
 N: 7003052.339  
 RL: 8.767m  
 GDA94

**LEGEND: ORIGINAL SERVICES**

- ORIGINAL MANHOLE 1050φ
- EX\_S ORIGINAL DN150 VC SEWER MAIN
- EX\_W ORIGINAL DN100 AC WATERMAIN
- ORIGINAL HYDRANT

**LEGEND - NEW SERVICES**

- DN100/DN150 oPVC PN16 WM VALVE (VA)
- HYDRANT
- HYDRANT (TEMPORARY DUCKFOOT)
- 0025/0032 PE100 PN16 WS
- WATER METER



JOINS PLAN U-2024-5393-06

**REGISTERED SURVEYOR'S CERTIFICATION**  
 I, Angela Margaret Dahn, hereby certify that the vertical and horizontal locations and dimensions shown on this plan are a true and correct record and were located by survey.  
 Registered Surveyor (QLD)(sig.) Reg. Surveyor No. 05428 Date: 19/05/2025

**ENGINEER'S CERTIFICATION**  
 I, GLENN AINSWORTH, hereby certify that:  
 1. The information contained in this drawing / document is in compliance with approved drawings and design.  
 2. The new water and sewerage works defined by this drawing have been designed and constructed in accordance with the SEQ Code.  
 3. This represents an accurate record of as-constructed works  
 4. I accept responsibility for the information contained in this drawing / document.  
 RPEQ (signature) RPEQ No. 19204 Date: 01/07/25

**AS CONSTRUCTED**

A1	0	19/05/2025	AS CONSTRUCTED	DM	A Dahn	A Dahn	PASSED	AMD	19/05/2025
	INDEX	DATE	REVISIONS	DRAWN	CHECKED	PASSED	INITIALS	DATE	

**Unitywater**

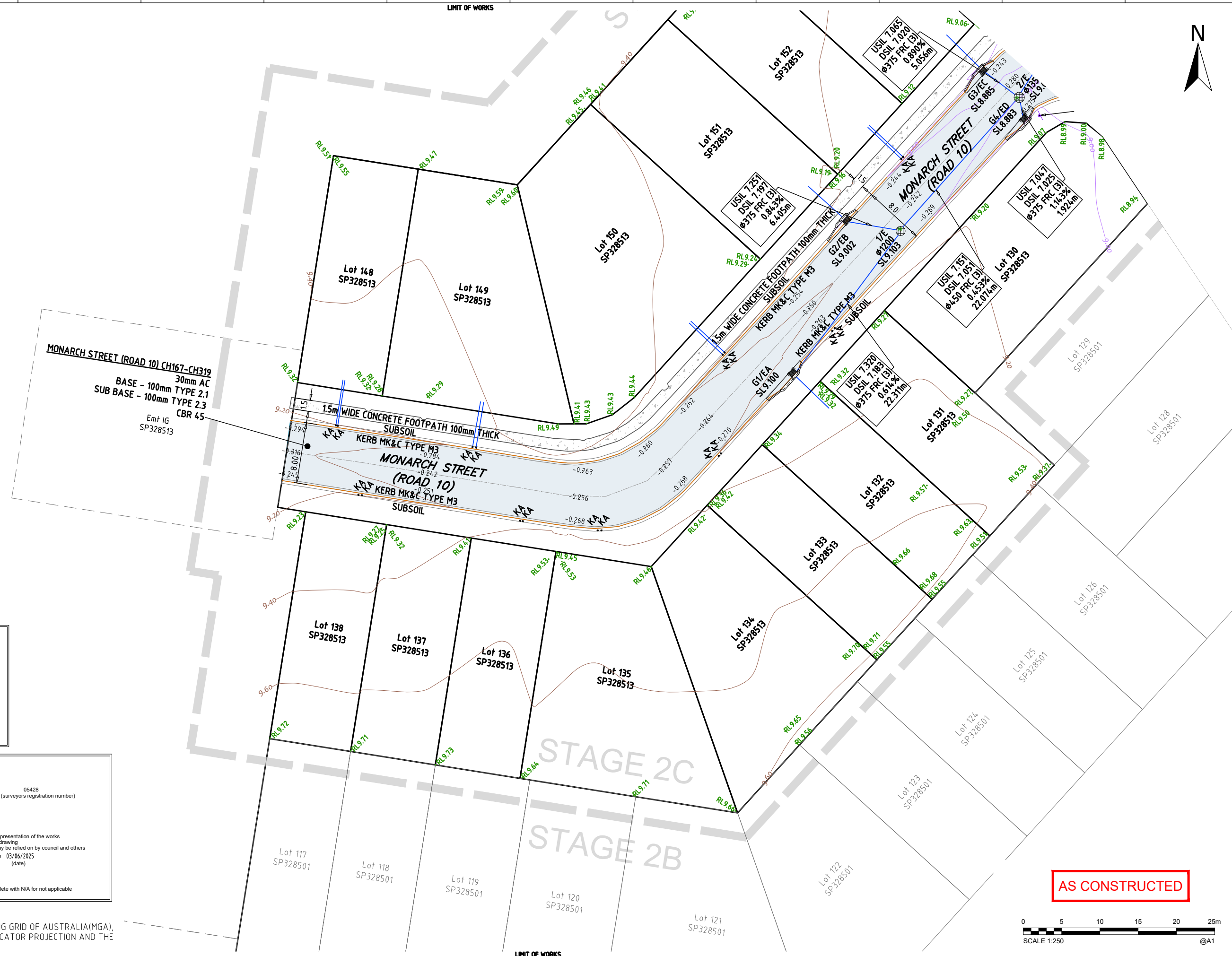
UNITYWATER APPROVAL No: APP-03657  
 RIVERBANKS ESTATE STAGE 2C  
 AS CONSTRUCTED  
 WATER RETICULATION LAYOUT PLAN SHEET 1 OF 3

SHEET 5 OF 7 SHEETS	SCALE 1:250
REVISION DATE 19/05/2025	REVISION 0
DISCIPLINE CODE C	
DRAWING NO. U-2024-5393-05	





PSM 191027  
 E: 495937.616  
 N: 7003052.339  
 RL: 8.767m



**ENGINEER'S CERTIFICATION**

I, Rawdon Stanford, hereby certify that:

- The information contained in this drawing / document is in compliance with approved drawings and design.
- The new construction works defined by this drawing have been designed and constructed in accordance with the MBRC Requirements.
- This represents an accurate record of as-constructed works.
- I accept responsibility for the information contained in this drawing / document.

*Rawdon Stanford*  
 RPEQ (signature) RPEQ No. 25834 Date 24/06/2025

**Surveyors As Constructed Certification**

I, Angela Maragaret Dahn (surveyors name) 05428 (surveyors registration number)  
 being a certified/registered surveyor and duly authorised representative of:  
THEREFOR GROUP (consulting firm or company name)

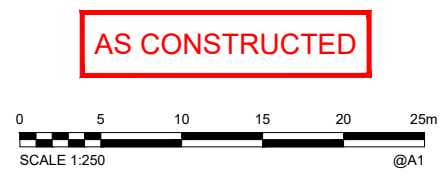
Hereby:

- certify the information contained in this drawing is an accurate as constructed representation of the works
- accept responsibility for the as constructed survey information contained in this drawing
- acknowledge the as constructed survey information contained in the drawing may be relied on by council and others

Certification of Stage: 2C by *Angela Maragaret Dahn* (signature) On 03/06/2025 (date)

For THEREFOR GROUP (consulting firm or company name)  
 Note: Where consulting firms, company name or stage numbers do not apply, complete with N/A for not applicable

**COORDINATE DATUM NOTE:**  
 HORIZONTAL COORDINATES(E,N) SUPPLIED ARE MAPPING GRID OF AUSTRALIA(MGA), ZONE 56 BASED ON THE UNIVERSAL TRANSVERSE MERCATOR PROJECTION AND THE GEOCENTRIC DATUM OF AUSTRALIA 1994.



DRAWING REVISIONS		REFERENCE DRAWINGS		DESIGN FILE No.	DESIGNED
REV.	REVISION DESCRIPTION	DRG. No.	DESCRIPTION	CONSTRUCT. No.	DATE
A	AS CONSTRUCTED				
				SURVEY FILE No.	Ref
				FIELD BOOK	DATE
				LOG BOOK	CHECKED
				LEVEL DATUM	DATE
				DATUM	Datum



**MORETON BAY REGIONAL COUNCIL**  
 CABOOLTURE DISTRICT OFFICE  
 2 HASKING STREET CABOOLTURE QLD 4510  
 PO BOX 159 CABOOLTURE QLD 4510  
 Telephone: (07) 3205 0555  
 Email: council@moretonbay.qld.gov.au

**RIVERBANK ESTATE**  
 STAGE 2C  
 AS CONSTRUCTED  
 ROADS & DRAINAGE

SUBDIVISION REFERENCE	
DA/2023/5042	
No. 1 OF 3 PLANS	
ASCAN GRID NUMBER	REV.
-	A

SCALE 1:250 ORIGINAL SIZE A1

PSM 191027  
 E: 495937.616  
 N: 7003052.339  
 RL: 8.767m



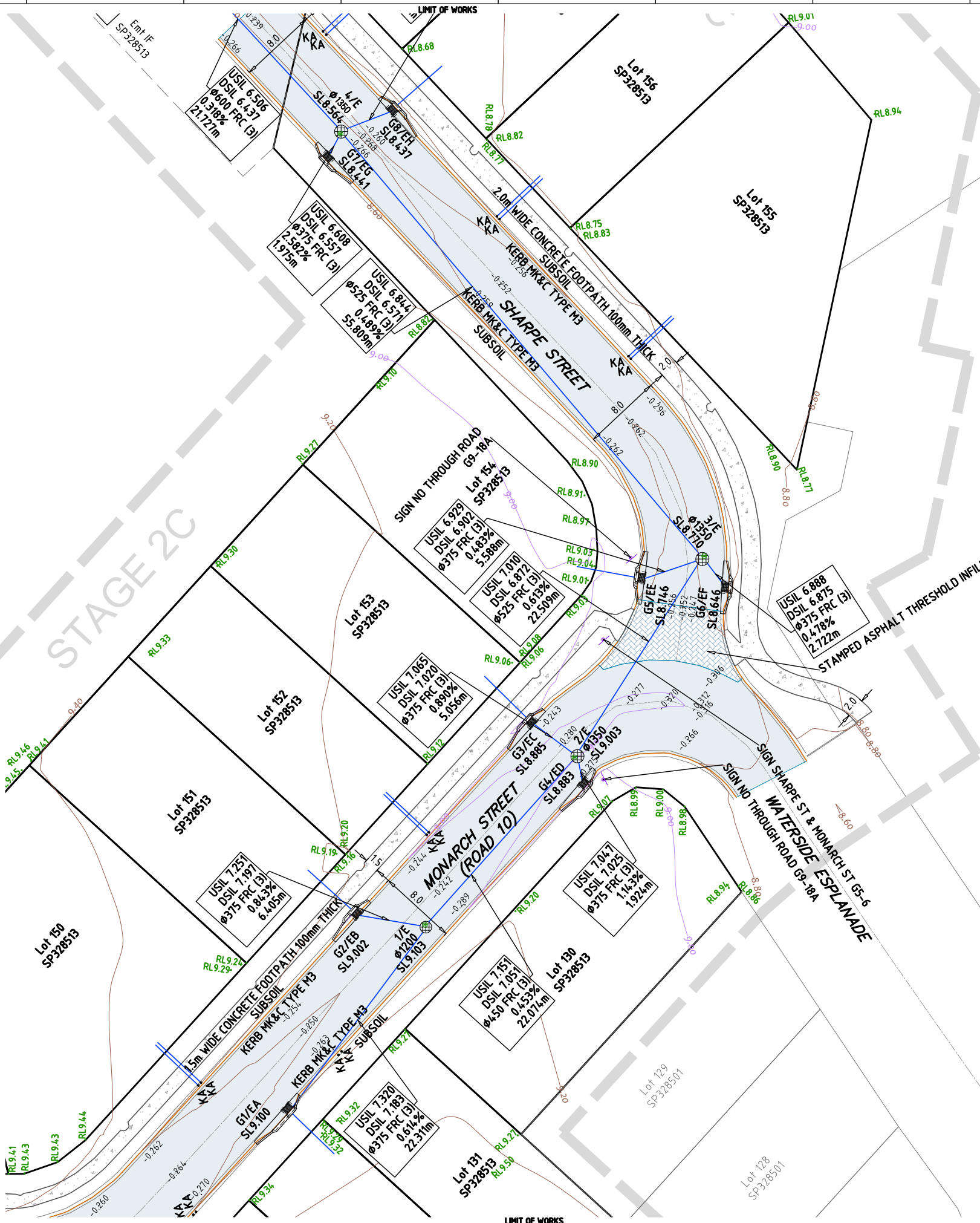
Lot 1036  
 SP328513

STAGE 2C

**ENGINEER'S CERTIFICATION**  
 I, Rawdon Stanford, hereby certify that:  
 1. The information contained in this drawing / document is in compliance with approved drawings and design.  
 2. The new construction works defined by this drawing have been designed and constructed in accordance with the MBRC Requirements.  
 3. This represents an accurate record of as-constructed works.  
 4. I accept responsibility for the information contained in this drawing / document.  
*RMS Stanford*  
 RPEQ (signature) RPEQ No. 25834 Date: 24/06/2025

**Surveyors As Constructed Certification**  
 I, Angela Maragaret Dahn (surveyors name) 05428 (surveyors registration number)  
 being a certified/registered surveyor and duly authorised representative of:  
 THEREFOR GROUP (consulting firm or company name)  
 Hereby  
 • certify the information contained in this drawing is an accurate as constructed representation of the works  
 • accept responsibility for the as constructed survey information contained in this drawing  
 • acknowledge the as constructed survey information contained in the drawing may be relied on by council and others  
 Certification of Stage: 2C by *AM* On 03/06/2025  
 (stage number) (signature) (date)  
 For THEREFOR GROUP (consulting firm or company name)  
 Note: Where consulting firms, company name or stage numbers do not apply, complete with N/A for not applicable

**COORDINATE DATUM NOTE:**  
 HORIZONTAL COORDINATES (E,N) SUPPLIED ARE MAPPING GRID OF AUSTRALIA (MGA), ZONE 56 BASED ON THE UNIVERSAL TRANSVERSE MERCATOR PROJECTION AND THE GEOCENTRIC DATUM OF AUSTRALIA 1994.



**AS CONSTRUCTED**



DRAWING REVISIONS		REFERENCE DRAWINGS		DESIGN FILE No.	DESIGNED
REV.	REVISION DESCRIPTION	DRG. No.	DESCRIPTION	CONSTRUCT. No.	DATE
A	AS CONSTRUCTED				
				SURVEY FILE No.	Ref
				FIELD BOOK	DATE
				LOG BOOK	CHECKED
				LEVEL DATUM	DATE
				DATUM	Datum



**MORETON BAY REGIONAL COUNCIL**  
 CABOOLTURE DISTRICT OFFICE  
 2 HASKING STREET CABOOLTURE QLD 4510  
 PO BOX 159 CABOOLTURE QLD 4510  
 Telephone: (07) 3205 0555  
 Email: council@moretonbay.qld.gov.au

**RIVERBANK ESTATE**  
 STAGE 2C  
 AS CONSTRUCTED  
 ROADS & DRAINAGE

SUBDIVISION REFERENCE	
DA/2023/5042	
No. 2 OF 3 PLANS	
ASCEN GRID NUMBER	REV.
-	A

SCALE 1:250 ORIGINAL SIZE A1

PSM 191027  
 E: 495937.616  
 N: 7003052.339  
 RL: 8.767m



**ENGINEER'S CERTIFICATION**

I, Rawdon Stanford, hereby certify that:

- The information contained in this drawing / document is in compliance with approved drawings and design.
- The new construction works defined by this drawing have been designed and constructed in accordance with the MBRC Requirements.
- This represents an accurate record of as-constructed works.
- I accept responsibility for the information contained in this drawing / document.

*Rawdon Stanford*  
 RPEQ (signature) RPEQ No. 25834 Date 24/06/2025

**Surveyors As Constructed Certification**

I, Angela Maragaret Dahn (surveyors name) 05428 (surveyors registration number)  
 being a certified/registered surveyor and duly authorised representative of:  
THEREFOR GROUP (consulting firm or company name)

Hereby:

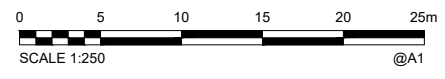
- certify the information contained in this drawing is an accurate as constructed representation of the works
- accept responsibility for the as constructed survey information contained in this drawing
- acknowledge the as constructed survey information contained in the drawing may be relied on by council and others

Certification of Stage: 2C by *Angela Dahn* (signature) On 03/06/2025 (date)

For THEREFOR GROUP (consulting firm or company name)  
 Note: Where consulting firms, company name or stage numbers do not apply, complete with N/A for not applicable

**COORDINATE DATUM NOTE:**  
 HORIZONTAL COORDINATES(E,N) SUPPLIED ARE MAPPING GRID OF AUSTRALIA(MGA), ZONE 56 BASED ON THE UNIVERSAL TRANSVERSE MERCATOR PROJECTION AND THE GEOCENTRIC DATUM OF AUSTRALIA 1994.

**AS CONSTRUCTED**



DRAWING REVISIONS		REFERENCE DRAWINGS		DESIGN FILE No.	DESIGNED
REV.	REVISION DESCRIPTION	DRG. No.	DESCRIPTION	CONSTRUCT. No.	DATE
A	AS CONSTRUCTED				
				SURVEY FILE No.	Ref
				FIELD BOOK	DATE
				LOG BOOK	CHECKED
				LEVEL DATUM	DATE
				DATUM	Datum

SCALE 1:250 ORIGINAL SIZE A1



**MORETON BAY REGIONAL COUNCIL**  
 CABOOLTURE DISTRICT OFFICE  
 2 HASKING STREET CABOOLTURE QLD 4510  
 PO BOX 159 CABOOLTURE QLD 4510  
 Telephone: (07) 3205 0555  
 Email: council@moretonbay.qld.gov.au

**RIVERBANK ESTATE**  
 STAGE 2C  
 AS CONSTRUCTED  
 ROADS & DRAINAGE

SUBDIVISION REFERENCE	
DA/2023/5042	
No. 3 OF 3 PLANS	
ASCEN GRID NUMBER	REV.
-	A