

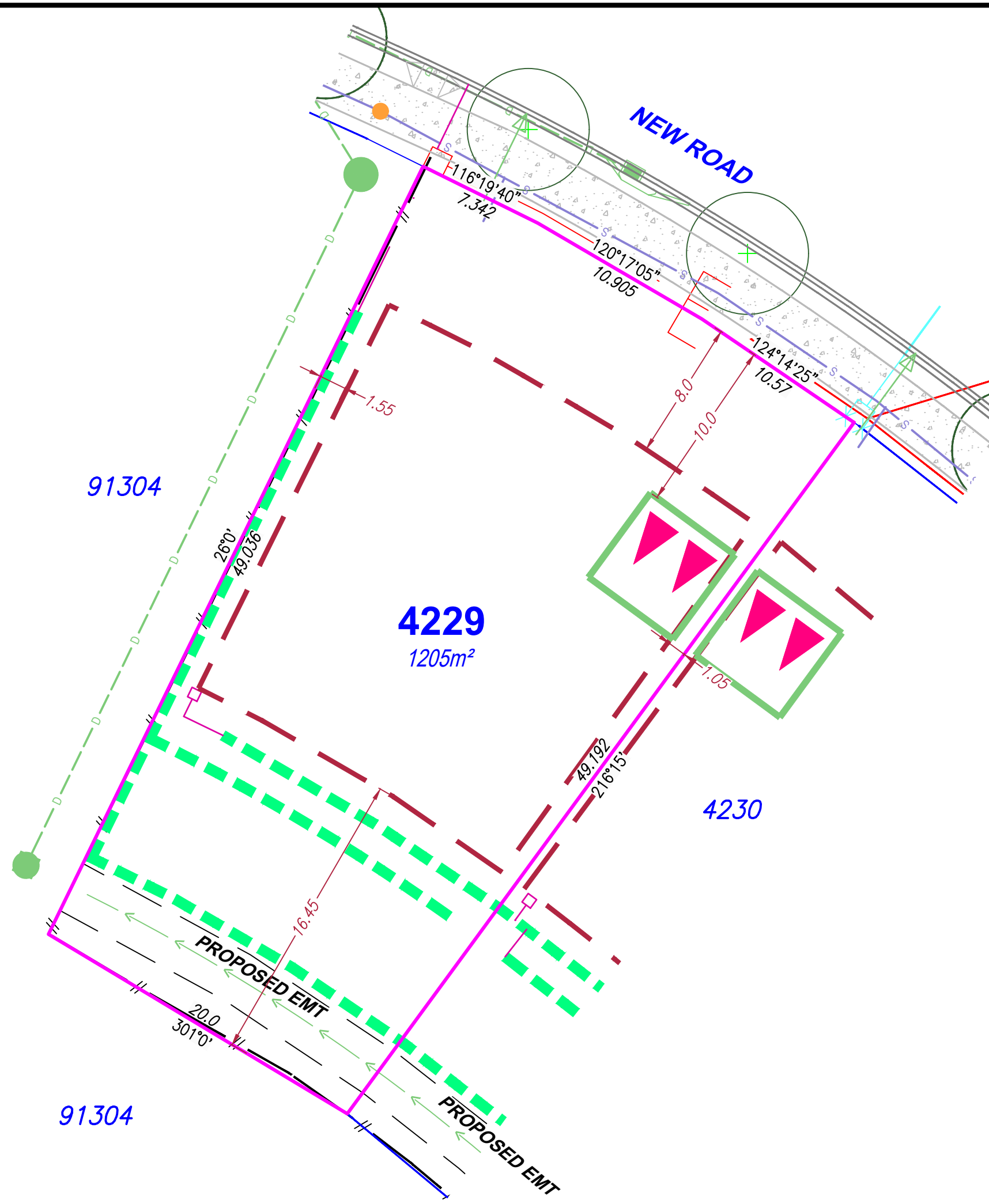
**Locality Diagram**

Not to Scale



**Legend**

- Rock Retaining Wall ---
- Sleeper Retaining Wall ---
- Landscape Retaining Wall ---
- Sewer line S
- Subsoil Drainage Pits -
- Sewer Manhole ●
- Roofwater Drainage Line and Catch Pit R
- Stormwater Drainage Line D
- Stormwater Manhole/ Pit ●
- Stormwater Kerb Adapter △
- Water Main W
- Water Conduit C
- Water Service Point of Entry X
- Underground Electricity, Street Light, Electricity Pillar & NBN E
- Developer Fencing //
- Concrete Pathway ▒
- Landscape Street Tree ○
- Zero Setback Building Line →
- Indicative Building Envelope -
- Bin Pads ✱
- Indicative Parking Access Location ▲



**SITE PLAN**

For Proposed Lot 4229  
on SP358951  
Flagstone - Stage 10K

CURRENTLY DESCRIBED AS  
RPD Lot 911 on SP356636

LOCALITY Silverbark Ridge  
LOCAL AUTHORITY Logan City Council

**Notes**

Allotments used as Multiple Residential  
Compaction of any fill material placed on this site shall be completed to level on inspection and testing services in accordance with AS3798-2007.  
Location of sewer, roofwater, stormwater, water reticulation and electricity lines, manholes and pits are those shown on engineering design drawings, supplied by Colliers and may differ from the as-constructed location.  
Plan of Development information Supplied by RPS AAP Consulting Pty Ltd (Urban Design). Indicative Building Envelope depicts setbacks measured to outermost projection.  
The Site Plan does not override the approved Plan of Development;  
The Site Plan needs to be read in conjunction with the approved Plan of Development including the Plan of Development Tables and Plan of Development Notes; and  
The Site Plan is prepared prior to finalised engineering detailed design. The Site Plan should be read in conjunction with the Disclosure Plan.

Drawn: GBF Date: 26/02/2026

Checked: DFF Date: 02/03/2026

Issue	Description	Date
A	Issue to Client	02/03/26
B	Updated Engineering Data	21/04/26
C	Updated Setbacks	19/06/26



SCALE 1:250 SHEET SIZE A3



**RPS** A TETRA TECH COMPANY  
RPS AAP Consulting Pty Ltd  
ACN 117 883 173  
ABN 97 117 883 173  
Suite A.02, Level 1  
114 Brisbane Street  
Ipswich Qld 4305  
T +61 7 3437 2000  
F +61 7 3434 2009  
W rpsgroup.com

© COPYRIGHT PROTECTS THIS PLAN  
Unauthorised reproduction or amendment  
not permitted. Please contact the author.  
This plan has been prepared by RPS  
Australia East Pty Ltd (Cadastral  
Surveyor) to satisfy the requirements  
of the Land Sales Act 1984.

DWG. TLX370977-019-Stg10K-Site

PROJECT	PLAN	AMD.	SHEET
TLX370977	19/4229	C	1 of 1

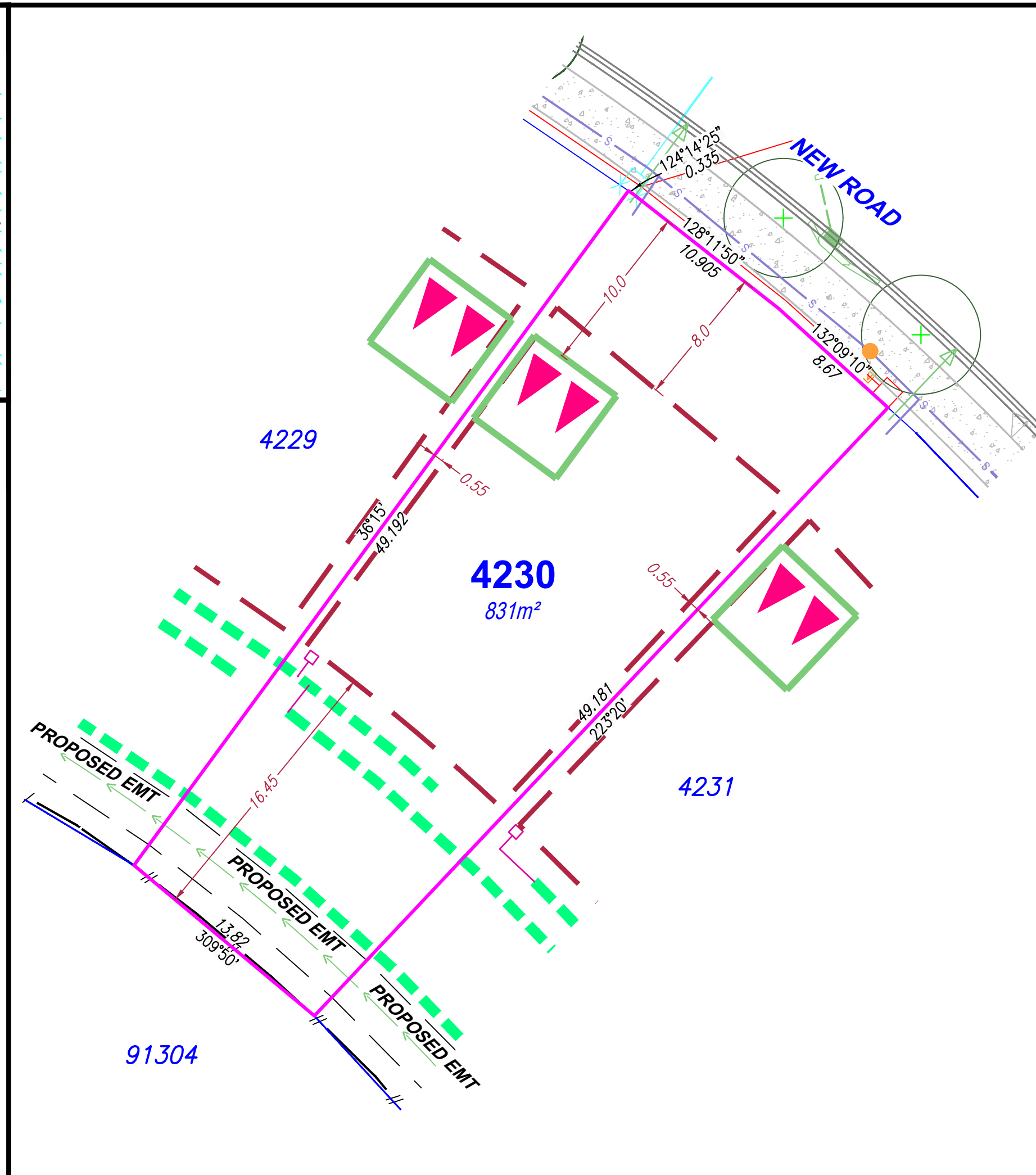
**Locality Diagram**

Not to Scale



**Legend**

- Rock Retaining Wall ---
- Sleeper Retaining Wall ---
- Landscape Retaining Wall ---
- Sewer line —S—
- Subsoil Drainage Pits -□-
- Sewer Manhole ●
- Roofwater Drainage Line and Catch Pit —R—■
- Stormwater Drainage Line -D-
- Stormwater Manhole/ Pit ●
- Stormwater Kerb Adapter ◁
- Water Main —W—
- Water Conduit —C—
- Water Service Point of Entry X
- Underground Electricity, Street Light, Electricity Pillar & NBN —E—\*
- Developer Fencing //
- Concrete Pathway
- Landscape Street Tree ⊕
- Zero Setback Building Line →
- Indicative Building Envelope
- Bin Pads ✱
- Indicative Parking Access Location ▲▲



**SITE PLAN**

For Proposed Lot 4230  
on SP358951  
Flagstone - Stage 10K

CURRENTLY DESCRIBED AS  
RPD Lot 911 on SP356636

LOCALITY Silverbark Ridge  
LOCAL AUTHORITY Logan City Council

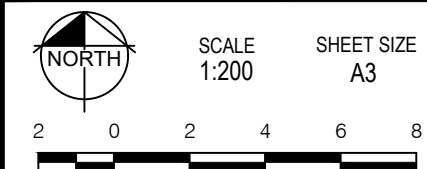
**Notes**

Allotments used as Multiple Residential  
Compaction of any fill material placed on this site shall be completed to level on inspection and testing services in accordance with AS3798-2007.  
Location of sewer, roofwater, stormwater, water reticulation and electricity lines, manholes and pits are those shown on engineering design drawings, supplied by Colliers and may differ from the as-constructed location.  
Plan of Development information Supplied by RPS AAP Consulting Pty Ltd (Urban Design). Indicative Building Envelope depicts setbacks measured to outermost projection.  
The Site Plan does not override the approved Plan of Development;  
The Site Plan needs to be read in conjunction with the approved Plan of Development including the Plan of Development Tables and Plan of Development Notes; and  
The Site Plan is prepared prior to finalised engineering detailed design. The Site Plan should be read in conjunction with the Disclosure Plan.

Drawn: GBF Date: 26/02/2026

Checked: DFF Date: 02/03/2026

Issue	Description	Date
A	Issue to Client	02/03/26
B	Updated Engineering Data	21/04/26
C	Updated Setbacks	19/06/26



**RPS** A TETRA TECH COMPANY  
RPS AAP Consulting Pty Ltd  
ACN 117 883 173  
ABN 97 117 883 173  
Suite A.02, Level 1  
114 Brisbane Street  
Ipswich Qld 4305  
T +61 7 3437 2000  
F +61 7 3434 2009  
W rpsgroup.com

© COPYRIGHT PROTECTS THIS PLAN  
Unauthorised reproduction or amendment  
not permitted. Please contact the author.  
This plan has been prepared by RPS  
Australia East Pty Ltd (Cadastral  
Surveyor) to satisfy the requirements  
of the Land Sales Act 1984.

DWG. TLX370977-019-Stg10K-Site

PROJECT	PLAN	AMD.	SHEET
TLX370977	19/4230	C	1 of 1

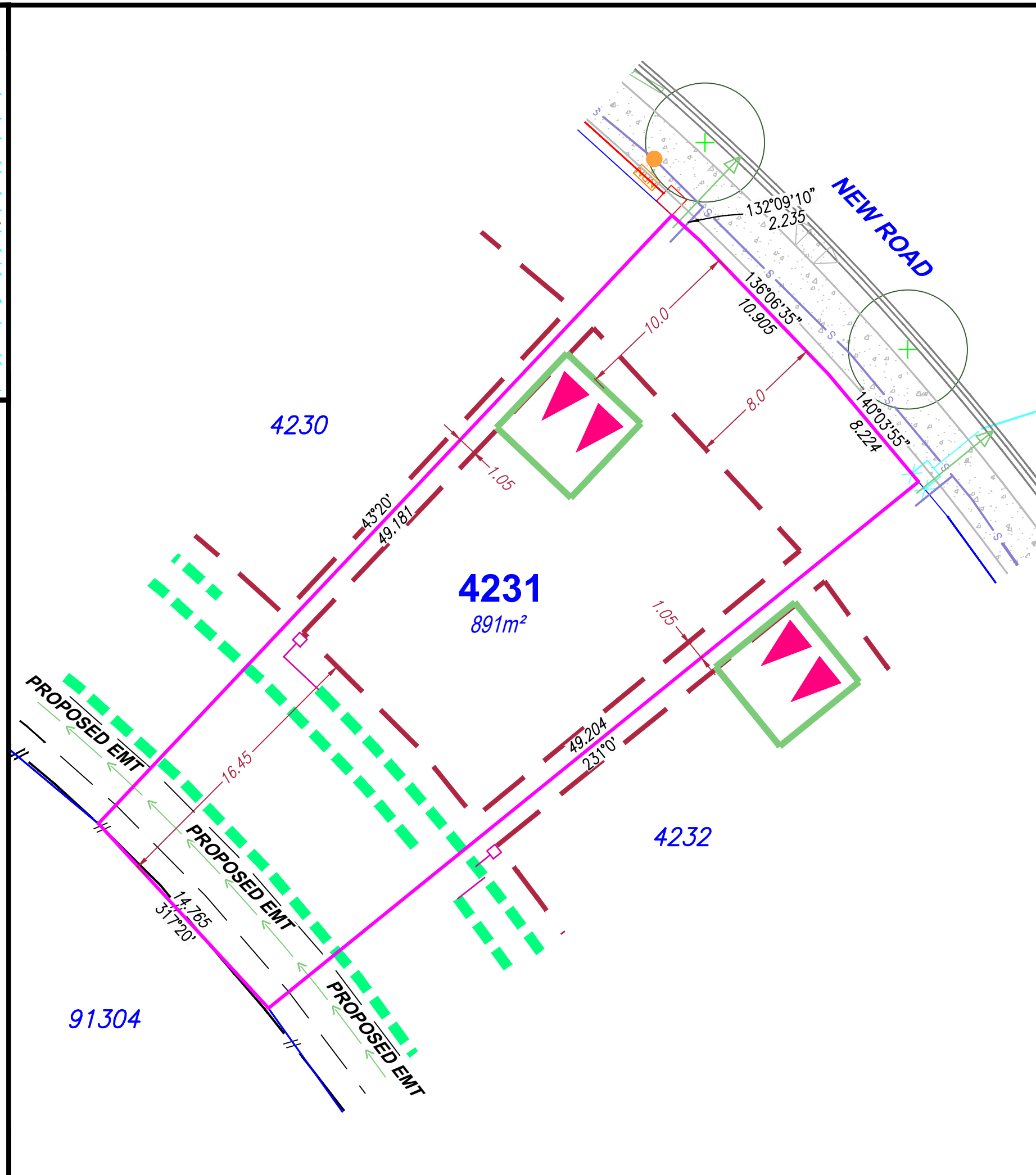
**Locality Diagram**

Not to Scale



**Legend**

- Rock Retaining Wall ----
- Sleeper Retaining Wall ----
- Landscape Retaining Wall ----
- Sewer line —S—
- Subsoil Drainage Pits —□—
- Sewer Manhole ●
- Roofwater Drainage Line and Catch Pit —R—■
- Stormwater Drainage Line —D—
- Stormwater Manhole/ Pit ●
- Stormwater Kerb Adapter ◁
- Water Main —W—
- Water Conduit —C—
- Water Service Point of Entry X
- Underground Electricity, Street Light, Electricity Pillar & NBN —E—\*
- Developer Fencing =
- Concrete Pathway ▒
- Landscape Street Tree ○+
- Zero Setback Building Line →
- Indicative Building Envelope - - - -
- Bin Pads ✱
- Indicative Parking Access Location ▴▴



**SITE PLAN**

For Proposed Lot 4231  
on SP358951  
Flagstone - Stage 10K

CURRENTLY DESCRIBED AS  
RPD Lot 911 on SP356636

LOCALITY Silverbark Ridge  
LOCAL AUTHORITY Logan City Council

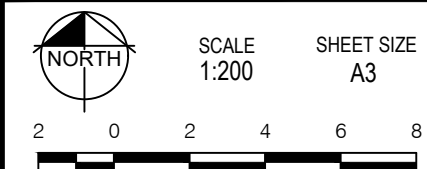
**Notes**

Allotments used as Multiple Residential  
Compaction of any fill material placed on this site shall be completed to level on inspection and testing services in accordance with AS3798-2007.  
Location of sewer, roofwater, stormwater, water reticulation and electricity lines, manholes and pits are those shown on engineering design drawings, supplied by Colliers and may differ from the as-constructed location.  
Plan of Development information Supplied by RPS AAP Consulting Pty Ltd (Urban Design). Indicative Building Envelope depicts setbacks measured to outermost projection.  
The Site Plan does not override the approved Plan of Development;  
The Site Plan needs to be read in conjunction with the approved Plan of Development including the Plan of Development Tables and Plan of Development Notes; and  
The Site Plan is prepared prior to finalised engineering detailed design. The Site Plan should be read in conjunction with the Disclosure Plan.

Drawn: GBF Date: 26/02/2026

Checked: DFF Date: 02/03/2026

Issue	Description	Date
A	Issue to Client	02/03/26
B	Updated Engineering Data	21/04/26
C	Updated Setbacks	19/06/26



**RPS**  
A TETRA TECH COMPANY

RPS AAP Consulting Pty Ltd  
ACN 117 883 173  
ABN 97 117 883 173  
Suite A.02, Level 1  
114 Brisbane Street  
Ipswich Qld 4305  
T +61 7 3437 2000  
F +61 7 3434 2009  
W rpsgroup.com

© COPYRIGHT PROTECTS THIS PLAN  
Unauthorised reproduction or amendment  
not permitted. Please contact the author.  
This plan has been prepared by RPS  
Australia East Pty Ltd (Cadastral  
Surveyor) to satisfy the requirements  
of the Land Sales Act 1984.

DWG. TLX370977-019-Stg10K-Site

PROJECT	PLAN	AMD.	SHEET
TLX370977	19/4231	C	1 of 1

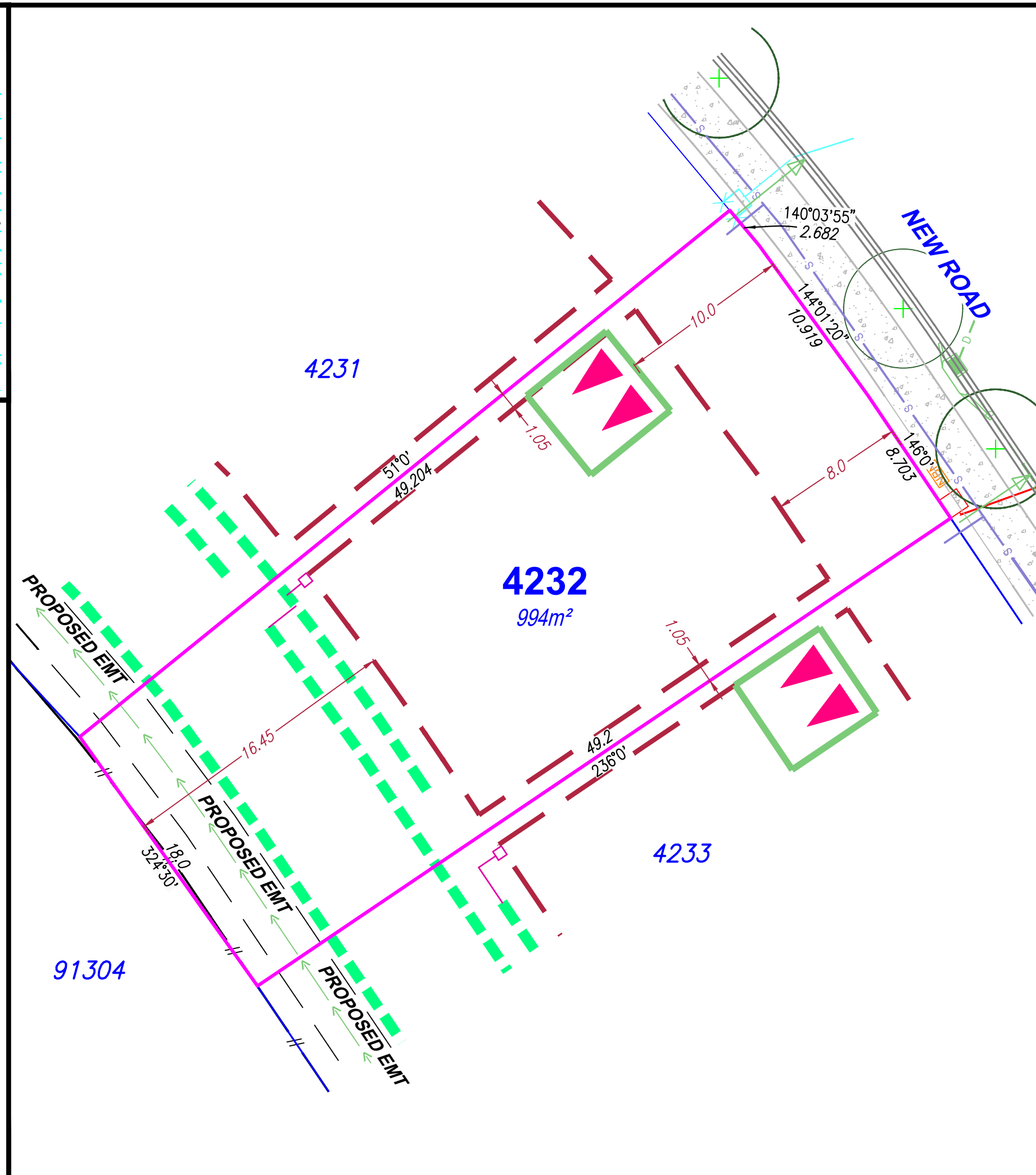
**Locality Diagram**

Not to Scale



**Legend**

- Rock Retaining Wall ---
- Sleeper Retaining Wall ---
- Landscape Retaining Wall ---
- Sewer line S
- Subsoil Drainage Pits -
- Sewer Manhole ●
- Roofwater Drainage Line and Catch Pit R
- Stormwater Drainage Line D
- Stormwater Manhole/ Pit ●
- Stormwater Kerb Adapter △
- Water Main W
- Water Conduit C
- Water Service Point of Entry X
- Underground Electricity, Street Light, Electricity Pillar & NBN E
- Developer Fencing //
- Concrete Pathway ▒
- Landscape Street Tree +
- Zero Setback Building Line →
- Indicative Building Envelope -
- Bin Pads ✱
- Indicative Parking Access Location ▲▲



**SITE PLAN**

For Proposed Lot 4232  
on SP358951  
Flagstone - Stage 10K

CURRENTLY DESCRIBED AS  
RPD Lot 911 on SP356636

LOCALITY Silverbark Ridge  
LOCAL AUTHORITY Logan City Council

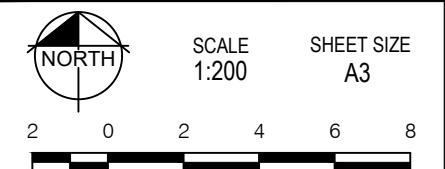
**Notes**

Allotments used as Multiple Residential  
Compaction of any fill material placed on this site shall be completed to level on inspection and testing services in accordance with AS3798-2007.  
Location of sewer, roofwater, stormwater, water reticulation and electricity lines, manholes and pits are those shown on engineering design drawings, supplied by Colliers and may differ from the as-constructed location.  
Plan of Development information Supplied by RPS AAP Consulting Pty Ltd (Urban Design). Indicative Building Envelope depicts setbacks measured to outermost projection.  
The Site Plan does not override the approved Plan of Development;  
The Site Plan needs to be read in conjunction with the approved Plan of Development including the Plan of Development Tables and Plan of Development Notes; and  
The Site Plan is prepared prior to finalised engineering detailed design. The Site Plan should be read in conjunction with the Disclosure Plan.

Drawn: GBF Date: 26/02/2026

Checked: DFF Date: 02/03/2026

Issue	Description	Date
A	Issue to Client	02/03/26
B	Updated Engineering Data	21/04/26
C	Updated Setbacks	19/06/26



**RPS** A TETRA TECH COMPANY  
RPS AAP Consulting Pty Ltd  
ACN 117 883 173  
ABN 97 117 883 173  
Suite A.02, Level 1  
114 Brisbane Street  
Ipswich Qld 4305  
T +61 7 3437 2000  
F +61 7 3434 2009  
W rpsgroup.com

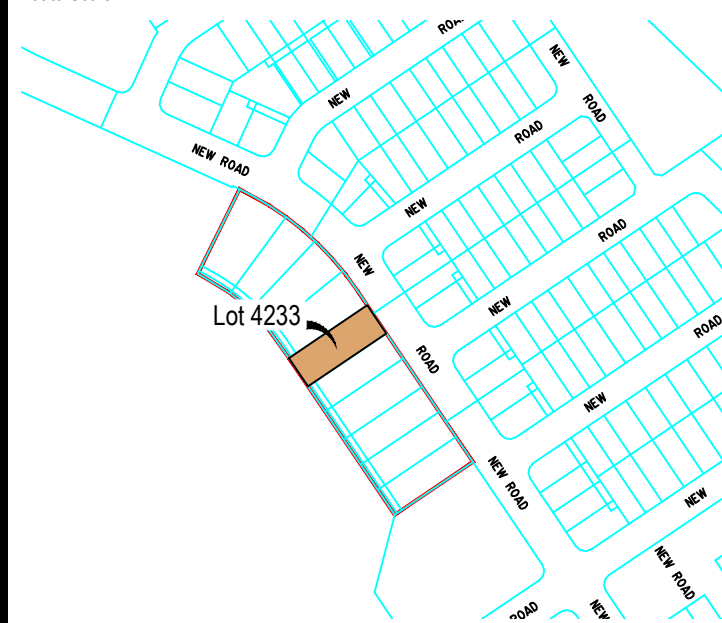
© COPYRIGHT PROTECTS THIS PLAN  
Unauthorised reproduction or amendment  
not permitted. Please contact the author.  
This plan has been prepared by RPS  
Australia East Pty Ltd (Cadastral  
Surveyor) to satisfy the requirements  
of the Land Sales Act 1984.

DWG. TLX370977-019-Stg10K-Site

PROJECT	PLAN	AMD.	SHEET
TLX370977	19/4232	C	1 of 1

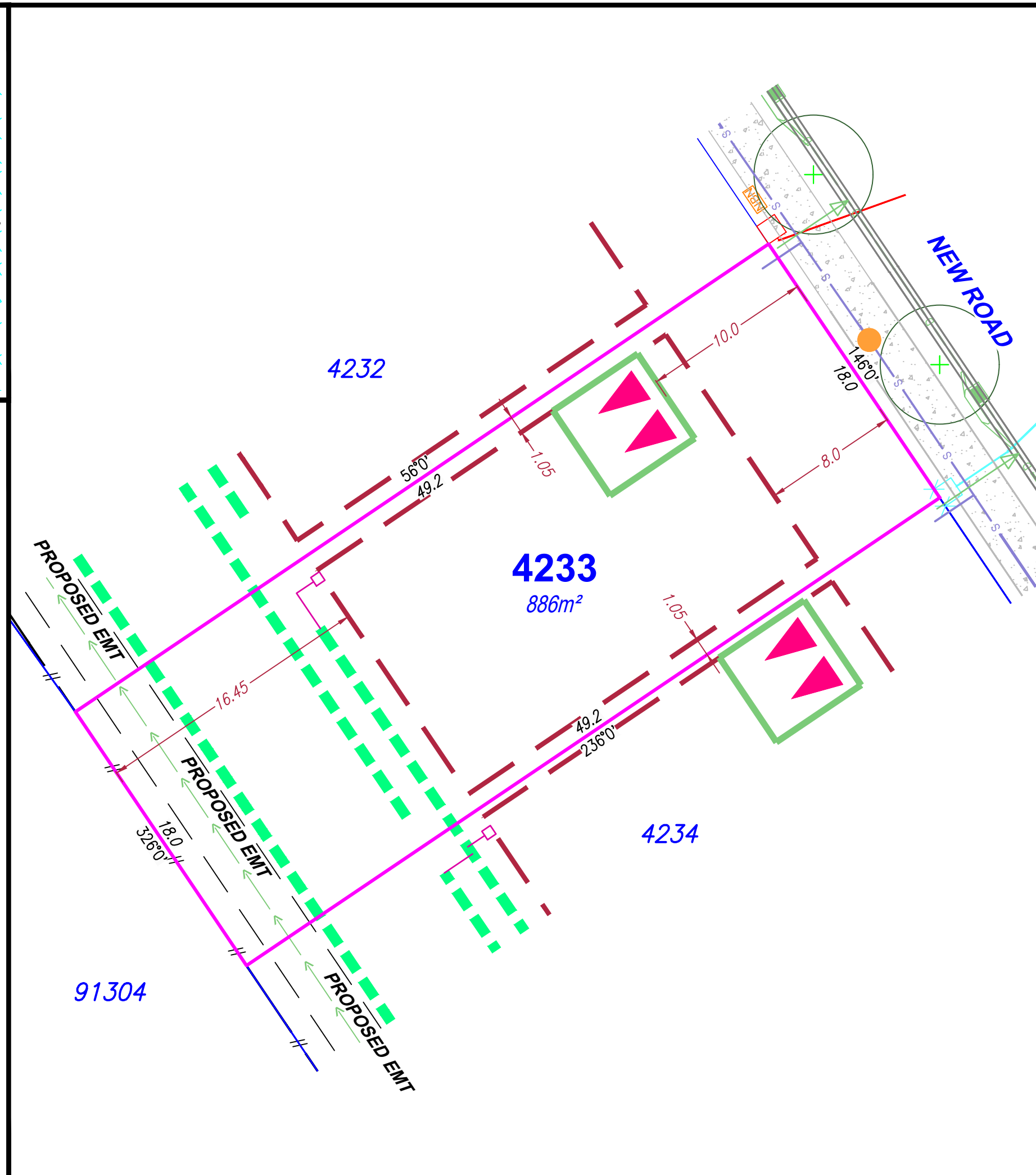
**Locality Diagram**

Not to Scale



**Legend**

- Rock Retaining Wall ---
- Sleeper Retaining Wall ---
- Landscape Retaining Wall ---
- Sewer line S
- Subsoil Drainage Pits -
- Sewer Manhole ●
- Roofwater Drainage Line and Catch Pit R
- Stormwater Drainage Line D
- Stormwater Manhole/ Pit ●
- Stormwater Kerb Adapter ▽
- Water Main W
- Water Conduit C
- Water Service Point of Entry X
- Underground Electricity, Street Light, Electricity Pillar & NBN E
- Developer Fencing //
- Concrete Pathway ▒
- Landscape Street Tree +
- Zero Setback Building Line →
- Indicative Building Envelope -
- Bin Pads \*
- Indicative Parking Access Location ▲▲



**SITE PLAN**

For Proposed Lot 4233  
on SP358951  
Flagstone - Stage 10K

CURRENTLY DESCRIBED AS  
RPD Lot 911 on SP356636

LOCALITY Silverbark Ridge  
LOCAL AUTHORITY Logan City Council

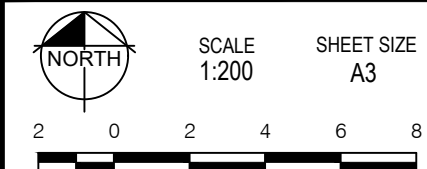
**Notes**

Allotments used as Multiple Residential  
Compaction of any fill material placed on this site shall be completed to level on inspection and testing services in accordance with AS3798-2007.  
Location of sewer, roofwater, stormwater, water reticulation and electricity lines, manholes and pits are those shown on engineering design drawings, supplied by Colliers and may differ from the as-constructed location.  
Plan of Development information Supplied by RPS AAP Consulting Pty Ltd (Urban Design). Indicative Building Envelope depicts setbacks measured to outermost projection.  
The Site Plan does not override the approved Plan of Development;  
The Site Plan needs to be read in conjunction with the approved Plan of Development including the Plan of Development Tables and Plan of Development Notes; and  
The Site Plan is prepared prior to finalised engineering detailed design. The Site Plan should be read in conjunction with the Disclosure Plan.

Drawn: GBF Date: 26/02/2026

Checked: DFF Date: 02/03/2026

Issue	Description	Date
A	Issue to Client	02/03/26
B	Updated Engineering Data	21/04/26
C	Updated Setbacks	19/06/26



**RPS** A TETRA TECH COMPANY  
RPS AAP Consulting Pty Ltd  
ACN 117 883 173  
ABN 97 117 883 173  
Suite A.02, Level 1  
114 Brisbane Street  
Ipswich Qld 4305  
T +61 7 3437 2000  
F +61 7 3434 2009  
W rpsgroup.com

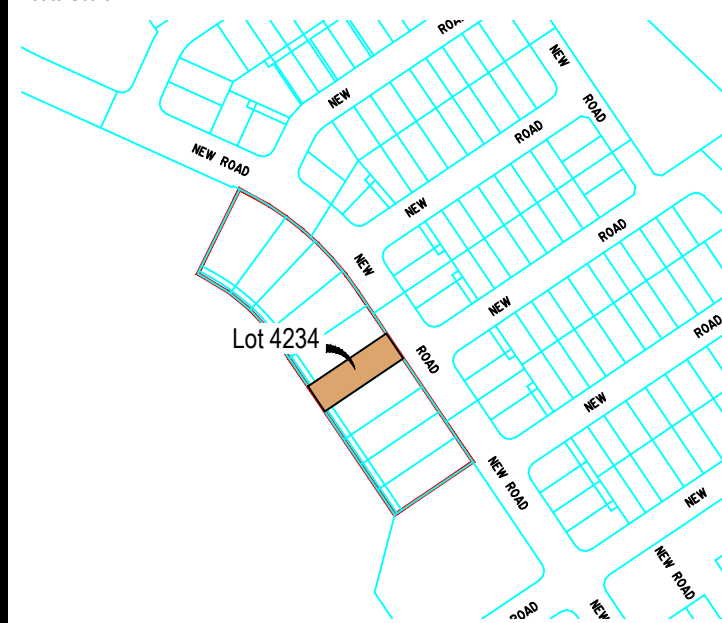
© COPYRIGHT PROTECTS THIS PLAN  
Unauthorised reproduction or amendment  
not permitted. Please contact the author.  
This plan has been prepared by RPS  
Australia East Pty Ltd (Cadastral  
Surveyor) to satisfy the requirements  
of the Land Sales Act 1984.

DWG. TLX370977-019-Stg10K-Site

PROJECT	PLAN	AMD.	SHEET
TLX370977	19/4233	C	1 of 1

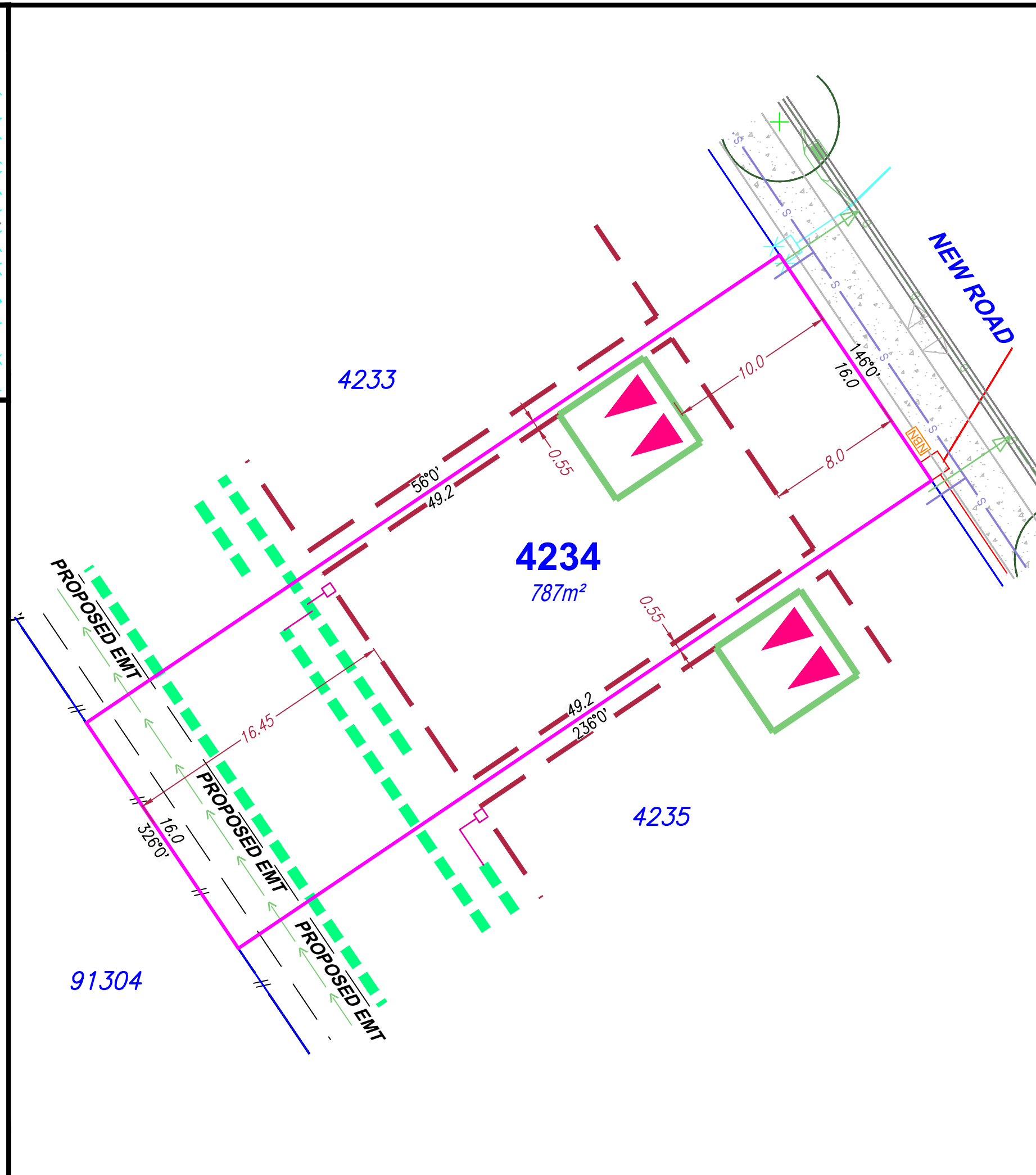
**Locality Diagram**

Not to Scale



**Legend**

- Rock Retaining Wall ---
- Sleeper Retaining Wall ---
- Landscape Retaining Wall ---
- Sewer line S---
- Subsoil Drainage Pits -□-
- Sewer Manhole ●
- Roofwater Drainage Line and Catch Pit R-■
- Stormwater Drainage Line D---
- Stormwater Manhole/ Pit ●
- Stormwater Kerb Adapter ▽
- Water Main W---
- Water Conduit C---
- Water Service Point of Entry X
- Underground Electricity, Street Light, Electricity Pillar & NBN E-□\*
- Developer Fencing //
- Concrete Pathway
- Landscape Street Tree ⊕
- Zero Setback Building Line →
- Indicative Building Envelope
- Bin Pads ✱
- Indicative Parking Access Location ▲▲



**SITE PLAN**

For Proposed Lot 4234  
on SP358951  
Flagstone - Stage 10K

CURRENTLY DESCRIBED AS  
RPD Lot 911 on SP356636

LOCALITY Silverbark Ridge  
LOCAL AUTHORITY Logan City Council

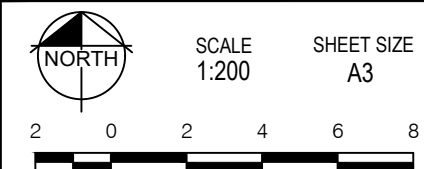
**Notes**

Allotments used as Multiple Residential  
Compaction of any fill material placed on this site shall be completed to level on inspection and testing services in accordance with AS3798-2007.  
Location of sewer, roofwater, stormwater, water reticulation and electricity lines, manholes and pits are those shown on engineering design drawings, supplied by Colliers and may differ from the as-constructed location.  
Plan of Development information Supplied by RPS AAP Consulting Pty Ltd (Urban Design). Indicative Building Envelope depicts setbacks measured to outermost projection.  
The Site Plan does not override the approved Plan of Development;  
The Site Plan needs to be read in conjunction with the approved Plan of Development including the Plan of Development Tables and Plan of Development Notes; and  
The Site Plan is prepared prior to finalised engineering detailed design. The Site Plan should be read in conjunction with the Disclosure Plan.

Drawn: GBF Date: 26/02/2026

Checked: DFF Date: 02/03/2026

Issue	Description	Date
A	Issue to Client	02/03/26
B	Updated Engineering Data	21/04/26
C	Updated Setbacks	19/06/26



**RPS** A TETRA TECH COMPANY  
RPS AAP Consulting Pty Ltd  
ACN 117 883 173  
ABN 97 117 883 173  
Suite A.02, Level 1  
114 Brisbane Street  
Ipswich Qld 4305  
T +61 7 3437 2000  
F +61 7 3434 2009  
W rpsgroup.com

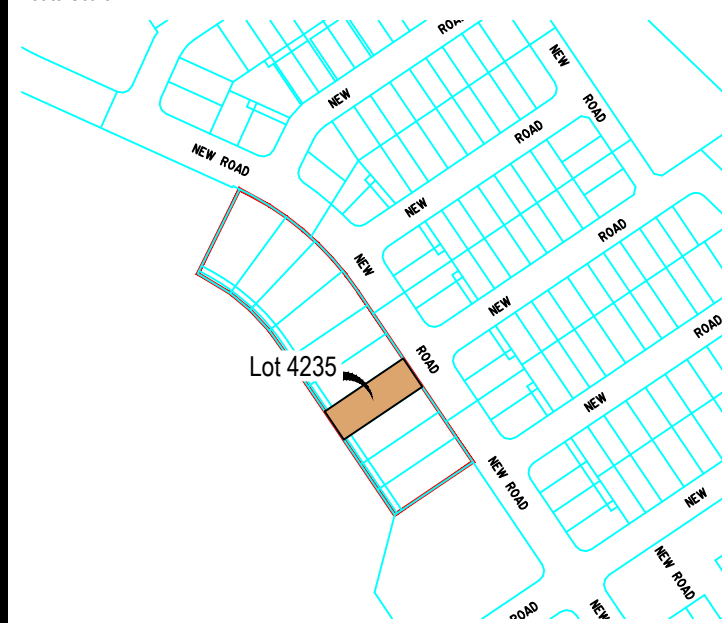
© COPYRIGHT PROTECTS THIS PLAN  
Unauthorised reproduction or amendment  
not permitted. Please contact the author.  
This plan has been prepared by RPS  
Australia East Pty Ltd (Cadastral  
Surveyor) to satisfy the requirements  
of the Land Sales Act 1984.

DWG. TLX370977-019-Stg10K-Site

PROJECT	PLAN	AMD.	SHEET
TLX370977	19/4234	C	1 of 1

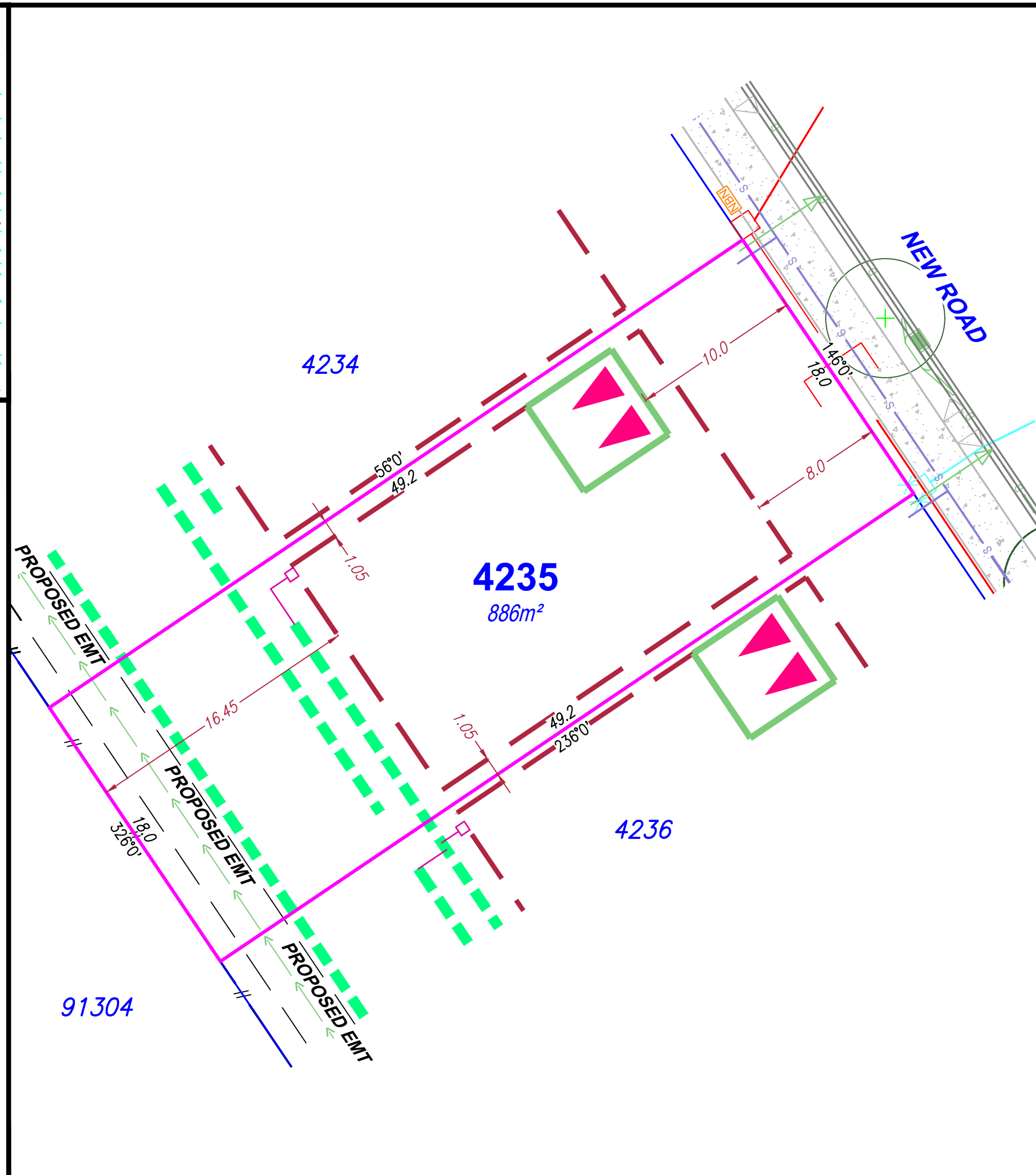
**Locality Diagram**

Not to Scale



**Legend**

- Rock Retaining Wall ---
- Sleeper Retaining Wall ---
- Landscape Retaining Wall ---
- Sewer line S
- Subsoil Drainage Pits -
- Sewer Manhole ●
- Roofwater Drainage Line and Catch Pit R
- Stormwater Drainage Line D
- Stormwater Manhole/ Pit ●
- Stormwater Kerb Adapter ▽
- Water Main W
- Water Conduit C
- Water Service Point of Entry X
- Underground Electricity, Street Light, Electricity Pillar & NBN E
- Developer Fencing //
- Concrete Pathway
- Landscape Street Tree ⊕
- Zero Setback Building Line →
- Indicative Building Envelope
- Bin Pads ✱
- Indicative Parking Access Location ▲▲



**SITE PLAN**

For Proposed Lot 4235  
on SP358951  
Flagstone - Stage 10K

CURRENTLY DESCRIBED AS  
RPD Lot 911 on SP356636

LOCALITY Silverbark Ridge  
LOCAL AUTHORITY Logan City Council

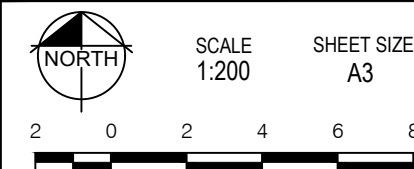
**Notes**

Allotments used as Multiple Residential  
Compaction of any fill material placed on this site shall be completed to level on inspection and testing services in accordance with AS3798-2007.  
Location of sewer, roofwater, stormwater, water reticulation and electricity lines, manholes and pits are those shown on engineering design drawings, supplied by Colliers and may differ from the as-constructed location.  
Plan of Development information Supplied by RPS AAP Consulting Pty Ltd (Urban Design). Indicative Building Envelope depicts setbacks measured to outermost projection.  
The Site Plan does not override the approved Plan of Development;  
The Site Plan needs to be read in conjunction with the approved Plan of Development including the Plan of Development Tables and Plan of Development Notes; and  
The Site Plan is prepared prior to finalised engineering detailed design. The Site Plan should be read in conjunction with the Disclosure Plan.

Drawn: GBF Date: 26/02/2026

Checked: DFF Date: 02/03/2026

Issue	Description	Date
A	Issue to Client	02/03/26
B	Updated Engineering Data	21/04/26
C	Updated Setbacks	19/06/26



**RPS**  
A TETRA TECH COMPANY  
RPS AAP Consulting Pty Ltd  
ACN 117 883 173  
ABN 97 117 883 173  
Suite A.02, Level 1  
114 Brisbane Street  
Ipswich Qld 4305  
T +61 7 3437 2000  
F +61 7 3434 2009  
W rpsgroup.com

© COPYRIGHT PROTECTS THIS PLAN  
Unauthorised reproduction or amendment  
not permitted. Please contact the author.  
This plan has been prepared by RPS  
Australia East Pty Ltd (Cadastral  
Surveyor) to satisfy the requirements  
of the Land Sales Act 1984.

DWG. TLX370977-019-Stg10K-Site

PROJECT	PLAN	AMD.	SHEET
TLX370977	19/4235	C	1 of 1

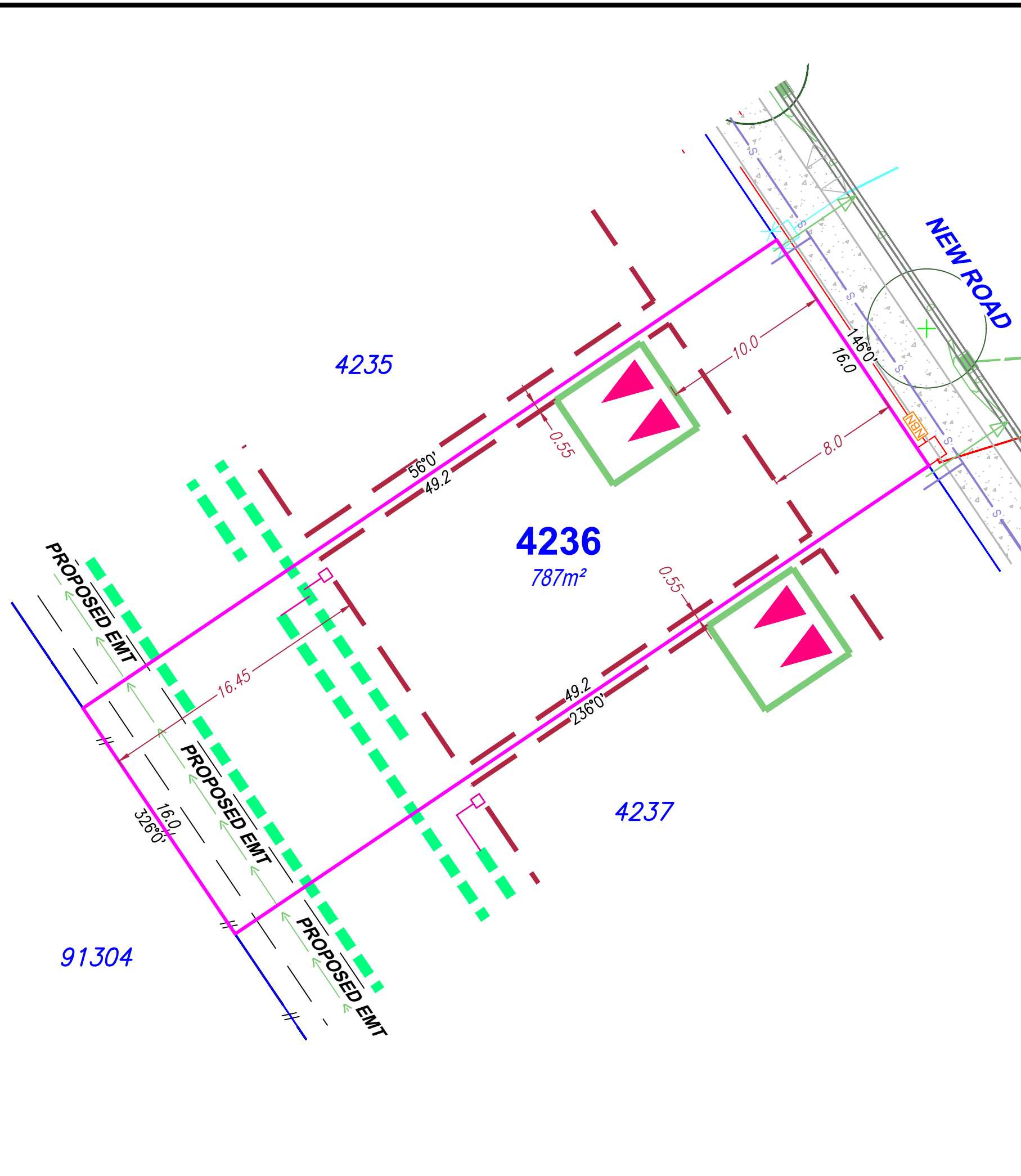
**Locality Diagram**

Not to Scale



**Legend**

- Rock Retaining Wall ---
- Sleeper Retaining Wall ---
- Landscape Retaining Wall ---
- Sewer line S---
- Subsoil Drainage Pits -□-
- Sewer Manhole ●
- Roofwater Drainage Line and Catch Pit R-■
- Stormwater Drainage Line D---
- Stormwater Manhole/ Pit ●
- Stormwater Kerb Adapter △
- Water Main W---
- Water Conduit C---
- Water Service Point of Entry X
- Underground Electricity, Street Light, Electricity Pillar & NBN E-□\*
- Developer Fencing //
- Concrete Pathway ▒
- Landscape Street Tree ○+
- Zero Setback Building Line →
- Indicative Building Envelope -□-
- Bin Pads ✱
- Indicative Parking Access Location ▴▴



**SITE PLAN**

For Proposed Lot 4236  
on SP358951  
Flagstone - Stage 10K

CURRENTLY DESCRIBED AS  
RPD Lot 911 on SP356636

LOCALITY Silverbark Ridge  
LOCAL AUTHORITY Logan City Council

**Notes**

Allotments used as Multiple Residential  
Compaction of any fill material placed on this site shall be completed to level on inspection and testing services in accordance with AS3798-2007.  
Location of sewer, roofwater, stormwater, water reticulation and electricity lines, manholes and pits are those shown on engineering design drawings, supplied by Colliers and may differ from the as-constructed location.  
Plan of Development information Supplied by RPS AAP Consulting Pty Ltd (Urban Design). Indicative Building Envelope depicts setbacks measured to outermost projection.  
The Site Plan does not override the approved Plan of Development;  
The Site Plan needs to be read in conjunction with the approved Plan of Development including the Plan of Development Tables and Plan of Development Notes; and  
The Site Plan is prepared prior to finalised engineering detailed design. The Site Plan should be read in conjunction with the Disclosure Plan.

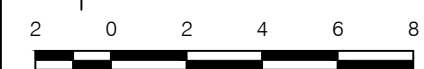
Drawn: GBF Date: 26/02/2026

Checked: DFF Date: 02/03/2026

Issue	Description	Date
A	Issue to Client	02/03/26
B	Updated Engineering Data	21/04/26
C	Updated Setbacks	19/06/26



SCALE 1:200 SHEET SIZE A3



RPS AAP Consulting Pty Ltd  
ACN 117 883 173  
ABN 97 117 883 173  
Suite A.02, Level 1  
114 Brisbane Street  
Ipswich Qld 4305  
T +61 7 3437 2000  
F +61 7 3434 2009  
W rpsgroup.com

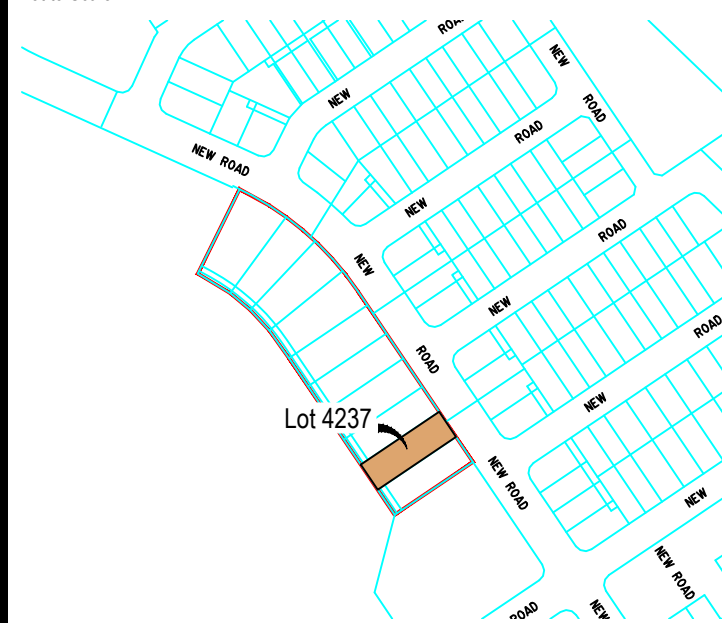
© COPYRIGHT PROTECTS THIS PLAN  
Unauthorised reproduction or amendment  
not permitted. Please contact the author.  
This plan has been prepared by RPS  
Australia East Pty Ltd (Cadastral  
Surveyor) to satisfy the requirements  
of the Land Sales Act 1984.

DWG. TLX370977-019-Stg10K-Site

PROJECT	PLAN	AMD.	SHEET
TLX370977	19/4236	C	1 of 1

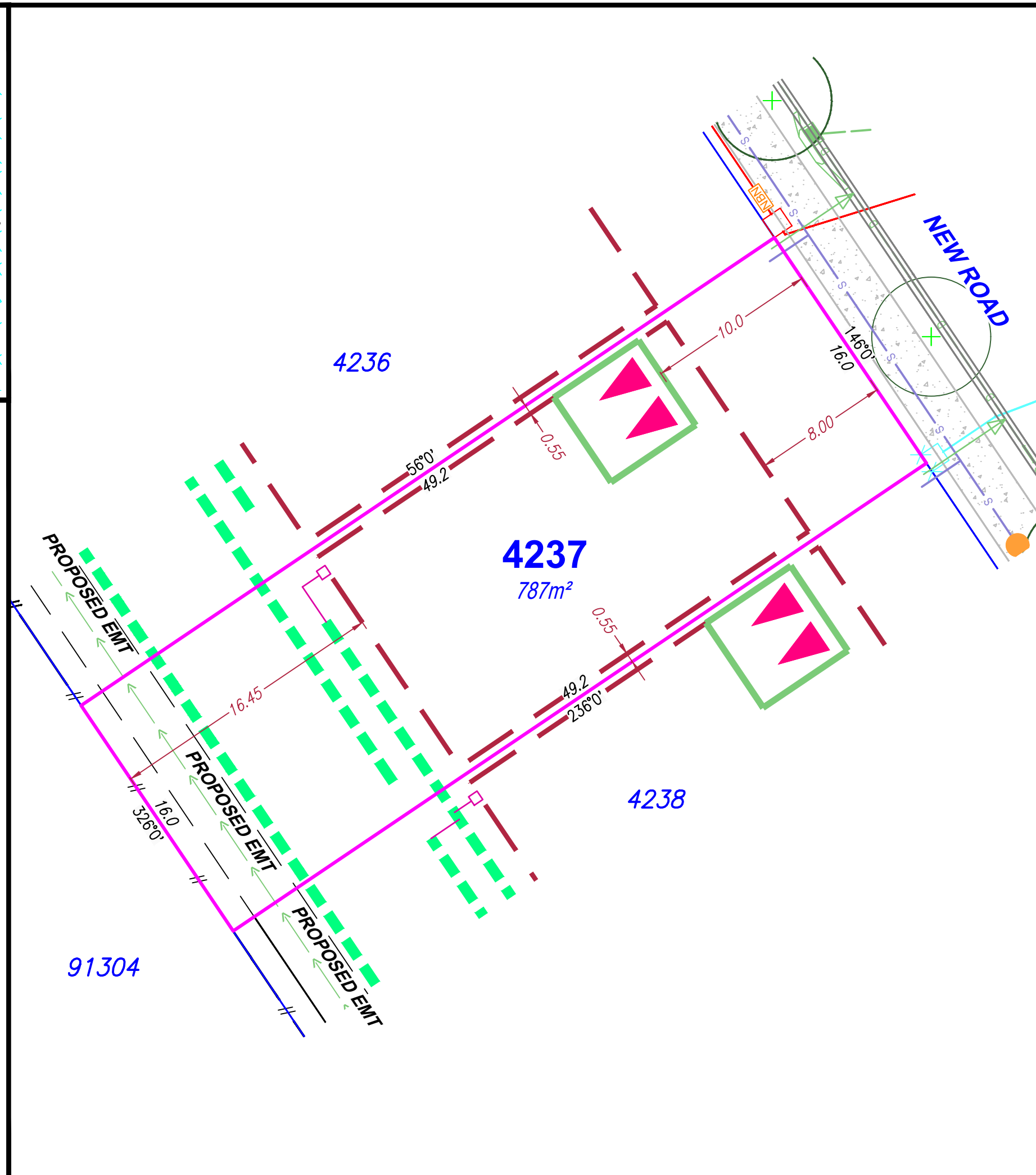
**Locality Diagram**

Not to Scale



**Legend**

- Rock Retaining Wall ---
- Sleeper Retaining Wall ---
- Landscape Retaining Wall ---
- Sewer line S---
- Subsoil Drainage Pits -□-
- Sewer Manhole ●
- Roofwater Drainage Line and Catch Pit R-■
- Stormwater Drainage Line D---
- Stormwater Manhole/ Pit ●
- Stormwater Kerb Adapter △
- Water Main W---
- Water Conduit C---
- Water Service Point of Entry X
- Underground Electricity, Street Light, Electricity Pillar & NBN E-□\*
- Developer Fencing //
- Concrete Pathway
- Landscape Street Tree ⊕
- Zero Setback Building Line →
- Indicative Building Envelope
- Bin Pads ✱
- Indicative Parking Access Location ▲▲



**SITE PLAN**

For Proposed Lot 4237  
on SP358951  
Flagstone - Stage 10K

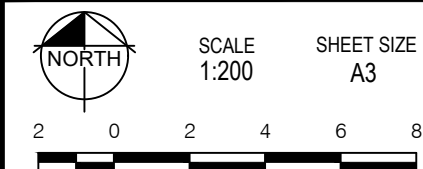
CURRENTLY DESCRIBED AS  
RPD Lot 911 on SP356636

LOCALITY Silverbark Ridge  
LOCAL AUTHORITY Logan City Council

**Notes**

Allotments used as Multiple Residential  
Compaction of any fill material placed on this site shall be completed to level on inspection and testing services in accordance with AS3798-2007.  
Location of sewer, roofwater, stormwater, water reticulation and electricity lines, manholes and pits are those shown on engineering design drawings, supplied by Colliers and may differ from the as-constructed location.  
Plan of Development information Supplied by RPS AAP Consulting Pty Ltd (Urban Design). Indicative Building Envelope depicts setbacks measured to outermost projection.  
The Site Plan does not override the approved Plan of Development;  
The Site Plan needs to be read in conjunction with the approved Plan of Development including the Plan of Development Tables and Plan of Development Notes; and  
The Site Plan is prepared prior to finalised engineering detailed design. The Site Plan should be read in conjunction with the Disclosure Plan.

Drawn:	GBF	Date:	26/02/2026
Checked:	DFF	Date:	02/03/2026
Issue	Description	Date	
A	Issue to Client	02/03/26	
B	Updated Engineering Data	21/04/26	
C	Updated Setbacks	19/06/26	



**RPS** A TETRA TECH COMPANY  
RPS AAP Consulting Pty Ltd  
ACN 117 883 173  
ABN 97 117 883 173  
Suite A.02, Level 1  
114 Brisbane Street  
Ipswich Qld 4305  
T +61 7 3437 2000  
F +61 7 3434 2009  
W rpsgroup.com

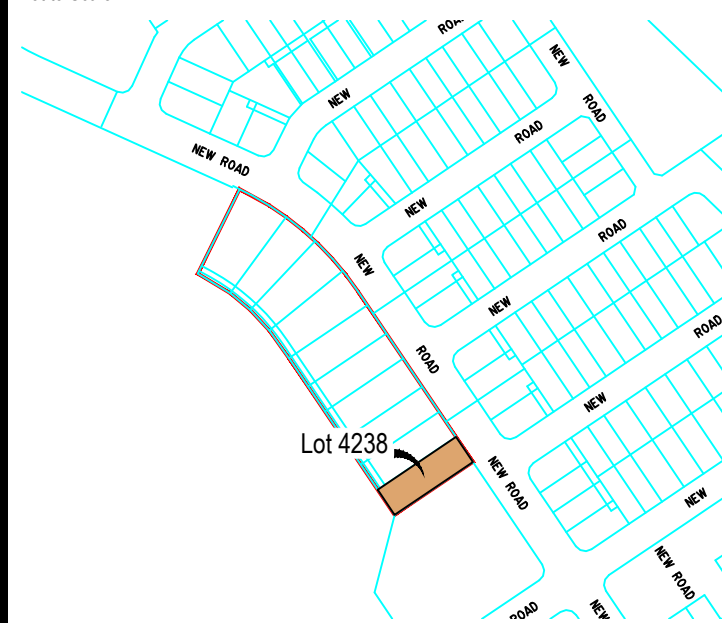
© COPYRIGHT PROTECTS THIS PLAN  
Unauthorised reproduction or amendment  
not permitted. Please contact the author.  
This plan has been prepared by RPS  
Australia East Pty Ltd (Cadastral  
Surveyor) to satisfy the requirements  
of the Land Sales Act 1984.

DWG. TLX370977-019-Stg10K-Site

PROJECT	PLAN	AMD.	SHEET
TLX370977	19/4237	C	1 of 1

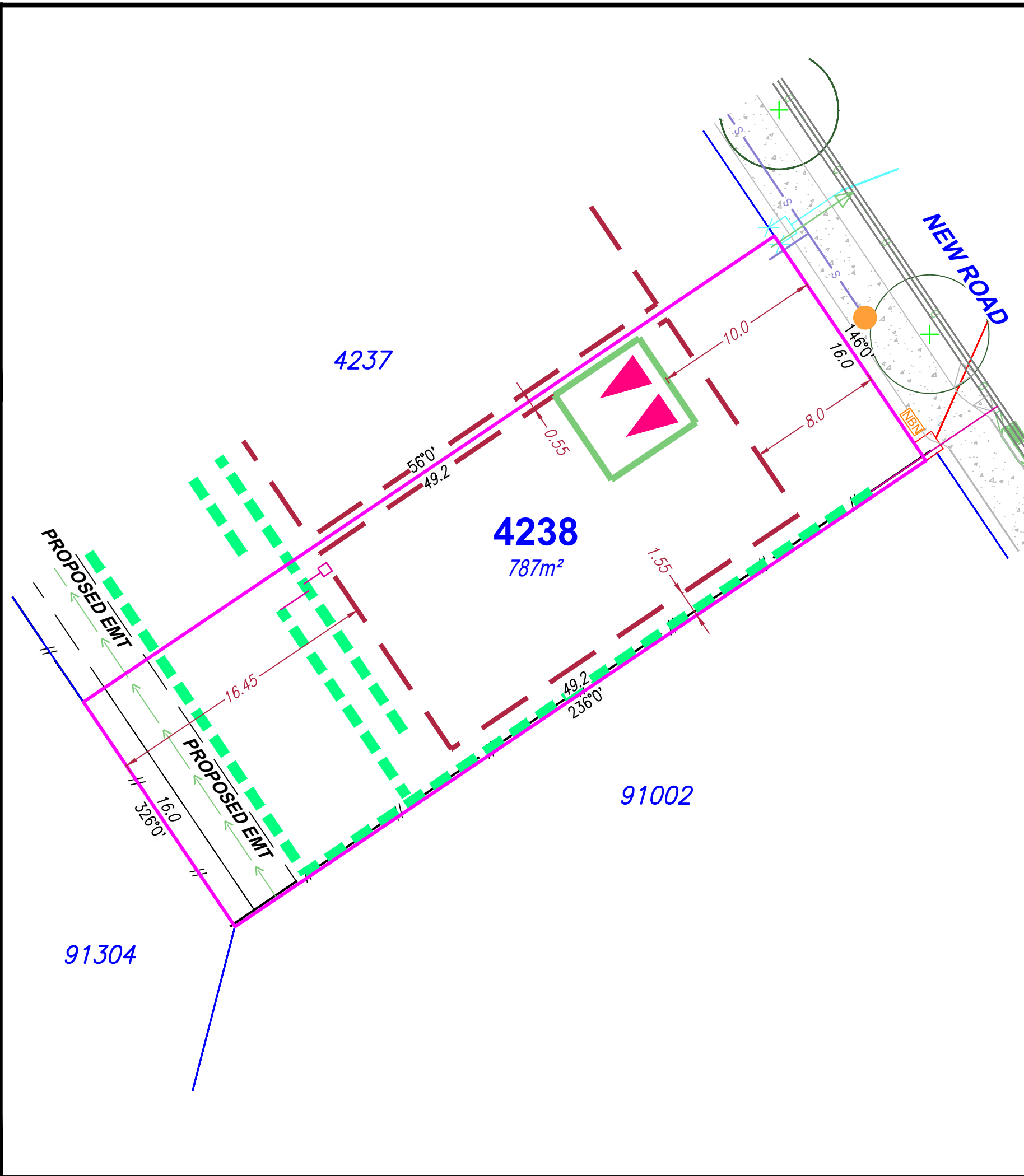
**Locality Diagram**

Not to Scale



**Legend**

- Rock Retaining Wall ---
- Sleeper Retaining Wall ---
- Landscape Retaining Wall ---
- Sewer line S
- Subsoil Drainage Pits -
- Sewer Manhole ●
- Roofwater Drainage Line and Catch Pit R
- Stormwater Drainage Line D
- Stormwater Manhole/ Pit ●
- Stormwater Kerb Adapter △
- Water Main W
- Water Conduit C
- Water Service Point of Entry X
- Underground Electricity, Street Light, Electricity Pillar & NBN E
- Developer Fencing //
- Concrete Pathway
- Landscape Street Tree ⊕
- Zero Setback Building Line
- Indicative Building Envelope
- Bin Pads ✱
- Indicative Parking Access Location ▲▲



**SITE PLAN**

For Proposed Lot 4238  
on SP358951  
Flagstone - Stage 10K

CURRENTLY DESCRIBED AS  
RPD Lot 911 on SP356636

LOCALITY Silverbark Ridge  
LOCAL AUTHORITY Logan City Council

**Notes**

Allotments used as Multiple Residential  
Compaction of any fill material placed on this site shall be completed to level on inspection and testing services in accordance with AS3798-2007.  
Location of sewer, roofwater, stormwater, water reticulation and electricity lines, manholes and pits are those shown on engineering design drawings, supplied by Colliers and may differ from the as-constructed location.  
Plan of Development information Supplied by RPS AAP Consulting Pty Ltd (Urban Design). Indicative Building Envelope depicts setbacks measured to outermost projection.  
The Site Plan does not override the approved Plan of Development;  
The Site Plan needs to be read in conjunction with the approved Plan of Development including the Plan of Development Tables and Plan of Development Notes; and  
The Site Plan is prepared prior to finalised engineering detailed design. The Site Plan should be read in conjunction with the Disclosure Plan.

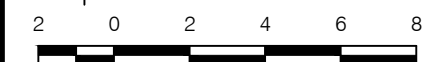
Drawn: GBF Date: 26/02/2026

Checked: DFF Date: 02/03/2026

Issue	Description	Date
A	Issue to Client	02/03/26
B	Updated Engineering Data	21/04/26
C	Updated Setbacks	19/06/26



SCALE 1:200 SHEET SIZE A3



**RPS** A TETRA TECH COMPANY  
RPS AAP Consulting Pty Ltd  
ACN 117 883 173  
ABN 97 117 883 173  
Suite A.02, Level 1  
114 Brisbane Street  
Ipswich Qld 4305  
T +61 7 3437 2000  
F +61 7 3434 2009  
W rpsgroup.com

© COPYRIGHT PROTECTS THIS PLAN  
Unauthorised reproduction or amendment  
not permitted. Please contact the author.  
This plan has been prepared by RPS  
Australia East Pty Ltd (Cadastral  
Surveyor) to satisfy the requirements  
of the Land Sales Act 1984.

DWG. TLX370977-019-Stg10K-Site

PROJECT	PLAN	AMD.	SHEET
TLX370977	19/4238	C	1 of 1