

**LOT SPECIFIC COVENANT**

Lot # 1928

This page includes lot specific requirements which must be included in the delivery of your lot. This page forms part of your covenant and your land sales contract, and compliance is mandatory.

**Multi Unit Dwelling Site**

This site may have 2 units on the lot.

**Not permitted**

You are not permitted a pool in the front yard.

**Notes**

Changes to the above requirements are not permitted without the written permission of Peet.

2

1928  
821m<sup>2</sup>

910  
SP346075

PROPOSED  
LOT 1927

PROPOSED  
LOT 1971

MERIDIAN

CRESCENT

98°03'25"  
42.691

126°18'  
1.963

107°28'  
1.963

135°42'45"  
5.423

324°59'  
42.461

34.186  
227°21'25"

1.5

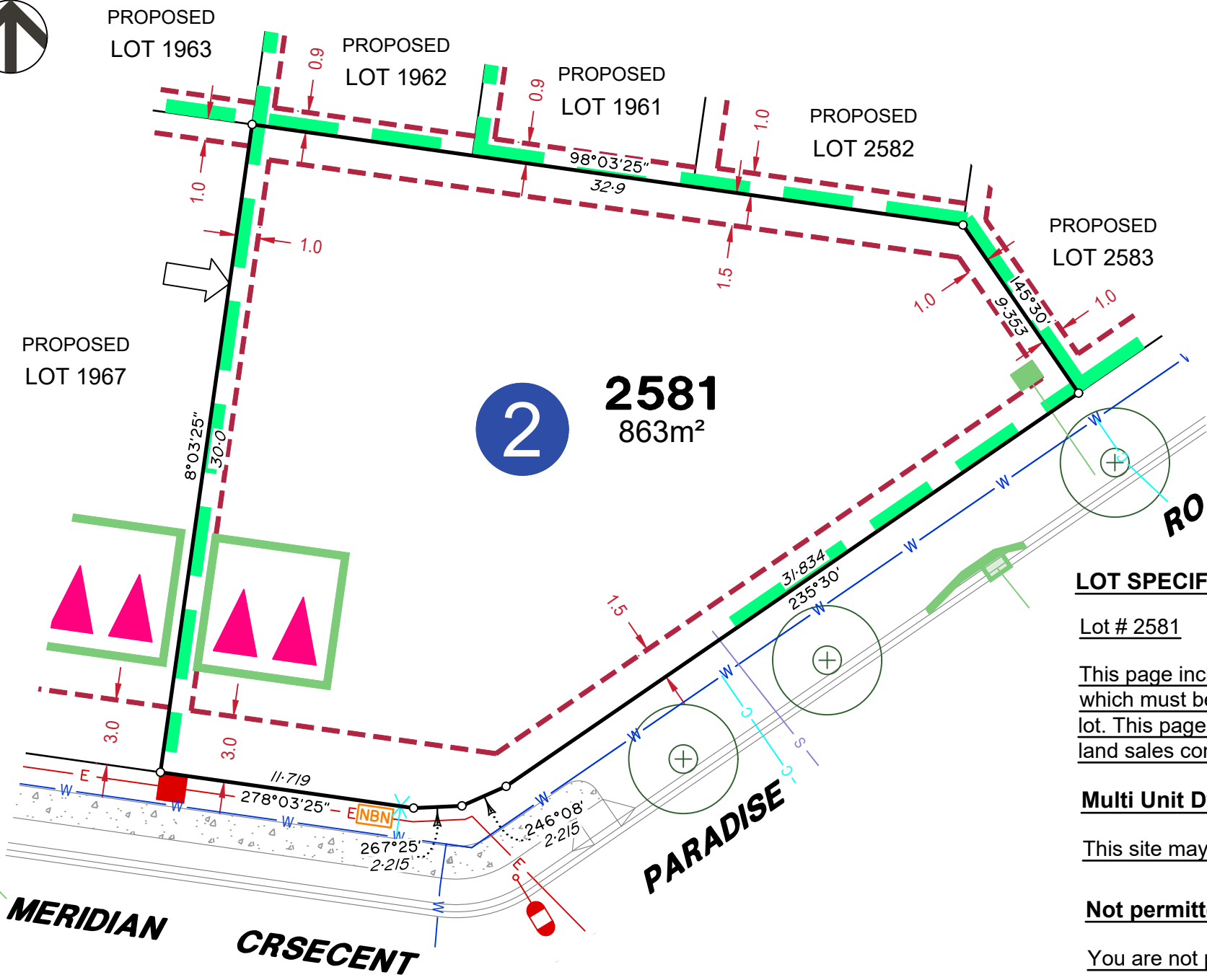
3.0

3.0

1.0

1.0





**LOT SPECIFIC COVENANT**

Lot # 2581

This page includes lot specific requirements which must be included in the delivery of your lot. This page forms part of your covenant and your land sales contract, and compliance is mandatory.

**Multi Unit Dwelling Site**

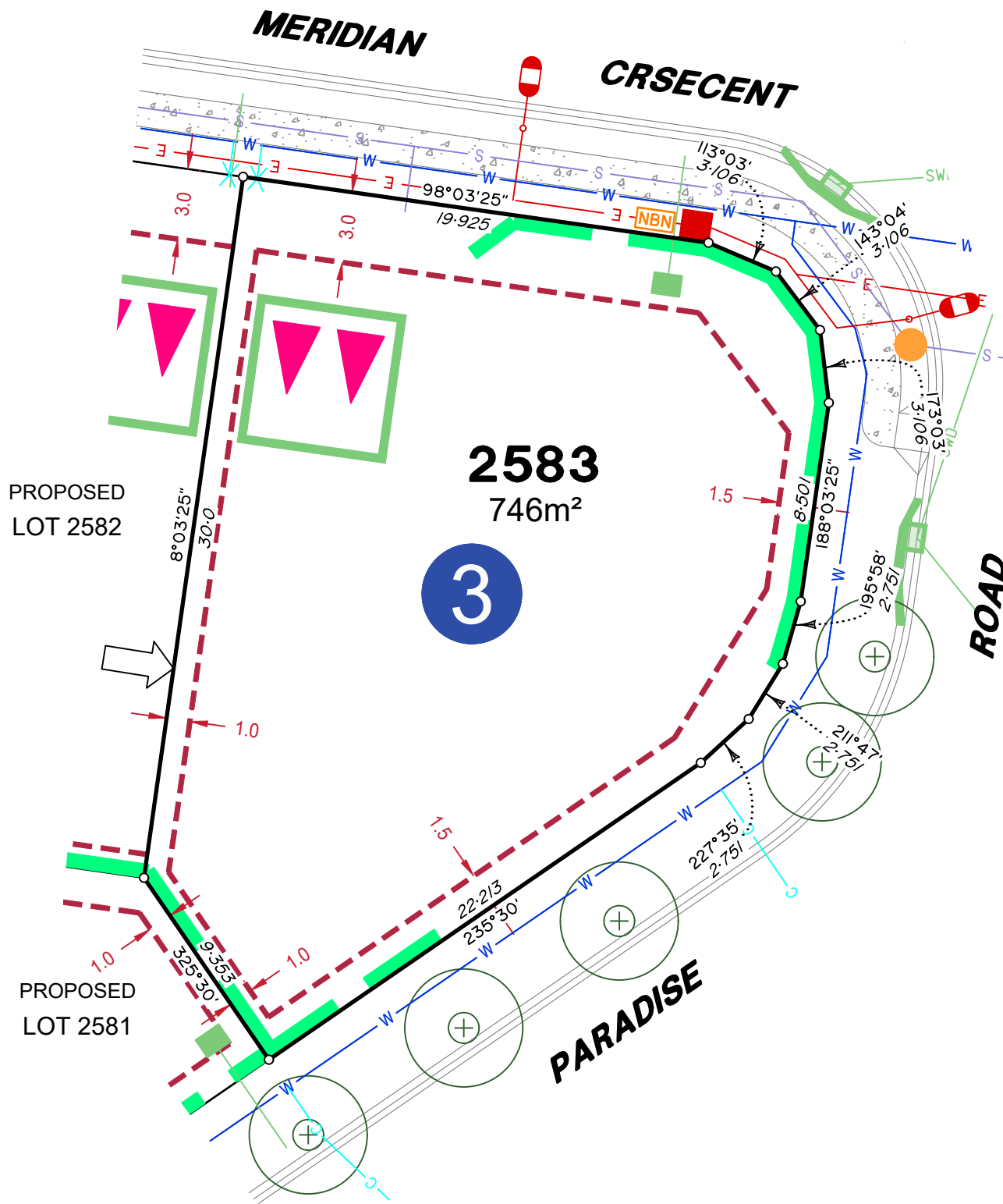
This site may have 2 units on the lot.

**Not permitted**

You are not permitted a pool in the front yard.

**Notes**

Changes to the above requirements are not permitted without the written permission of Peet.



**LOT SPECIFIC COVENANT**

Lot # 2583

This page includes lot specific requirements which must be included in the delivery of your lot. This page forms part of your covenant and your land sales contract, and compliance is mandatory.

**Multi Unit Dwelling Site**

This site may have 3 units on the lot.

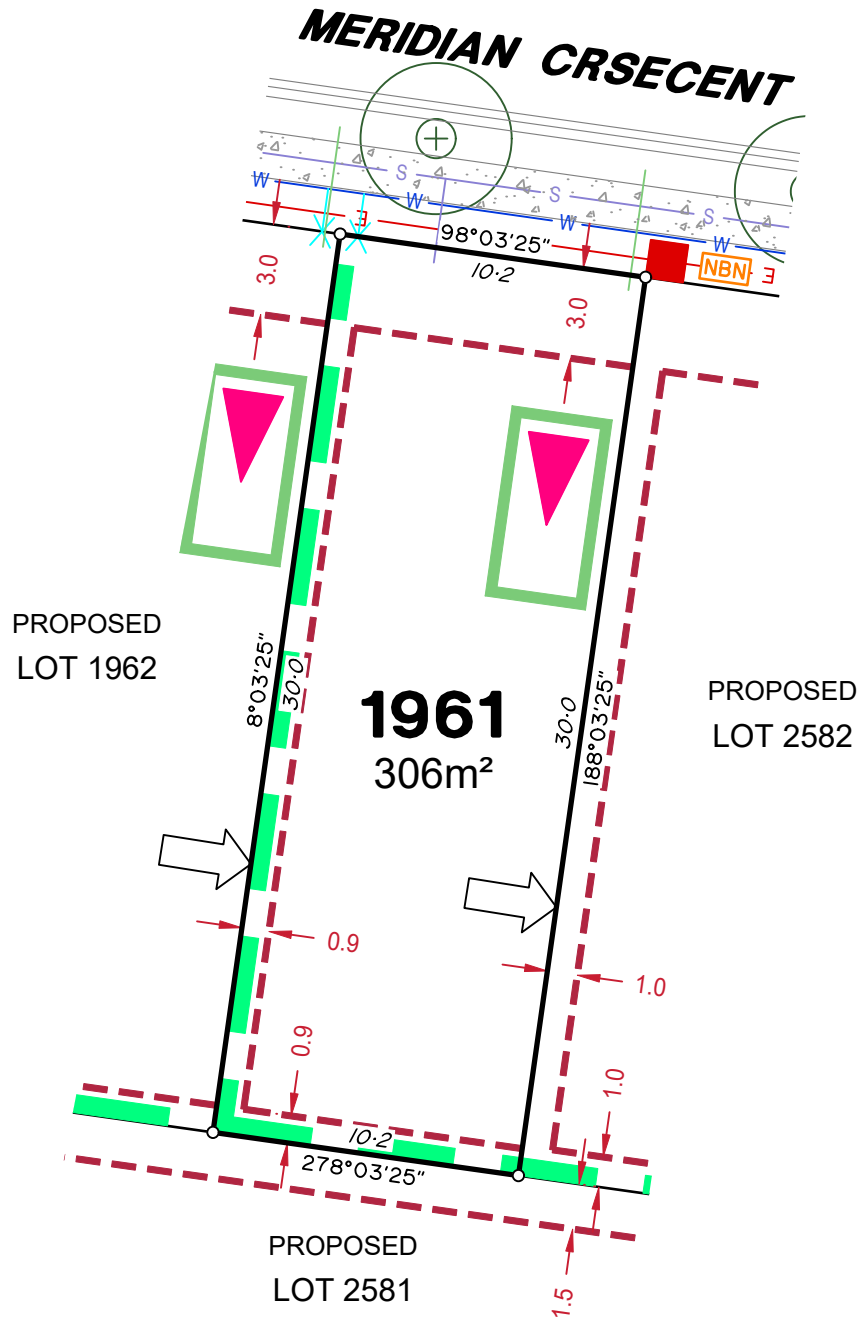
**Not permitted**

You are not permitted a pool in the front yard.

**Notes**

Changes to the above requirements are not permitted without the written permission of Peet.





## LEGEND

Rock Retaining Wall shown as:-	
Sleeper Retaining Wall shown as:-	
Landscape Retaining Wall shown as:-	
Sewer line	
Sewer Manhole	
Roofwater Drainage line and Catch Pit	
Stormwater Drainage Line	
Stormwater Manhole	
Stormwater Pit	
Water Main	
Water Conduit	
Water Service Point of Entry	
Underground Electricity, Street Light, Electricity Pillar & NBN	
Developer Fencing	
Concrete Pathway	
Zero Setback Building Line	
Landscape Street Tree	
Indicative Building Envelope	
Bin Pads	
Indicative Parking Access Location	

### ADDITIONAL NOTES:

Allotments used as Multiple Residential Allotments in accordance with the approved Plan of Development may have a reduced primary road setback to 3.0metres as noted on the Plan of Development Table.

Compaction of any fill material placed on this site shall be completed to level one inspection and testing services in accordance with AS3798-2007.

Location of sewer, roofwater, stormwater, water reticulation and electricity lines, manholes and pits are those shown on engineering design drawings, supplied by Peak Urban and may differ from the as-constructed location.

Plan of Development information Supplied by RPS Group PLC.

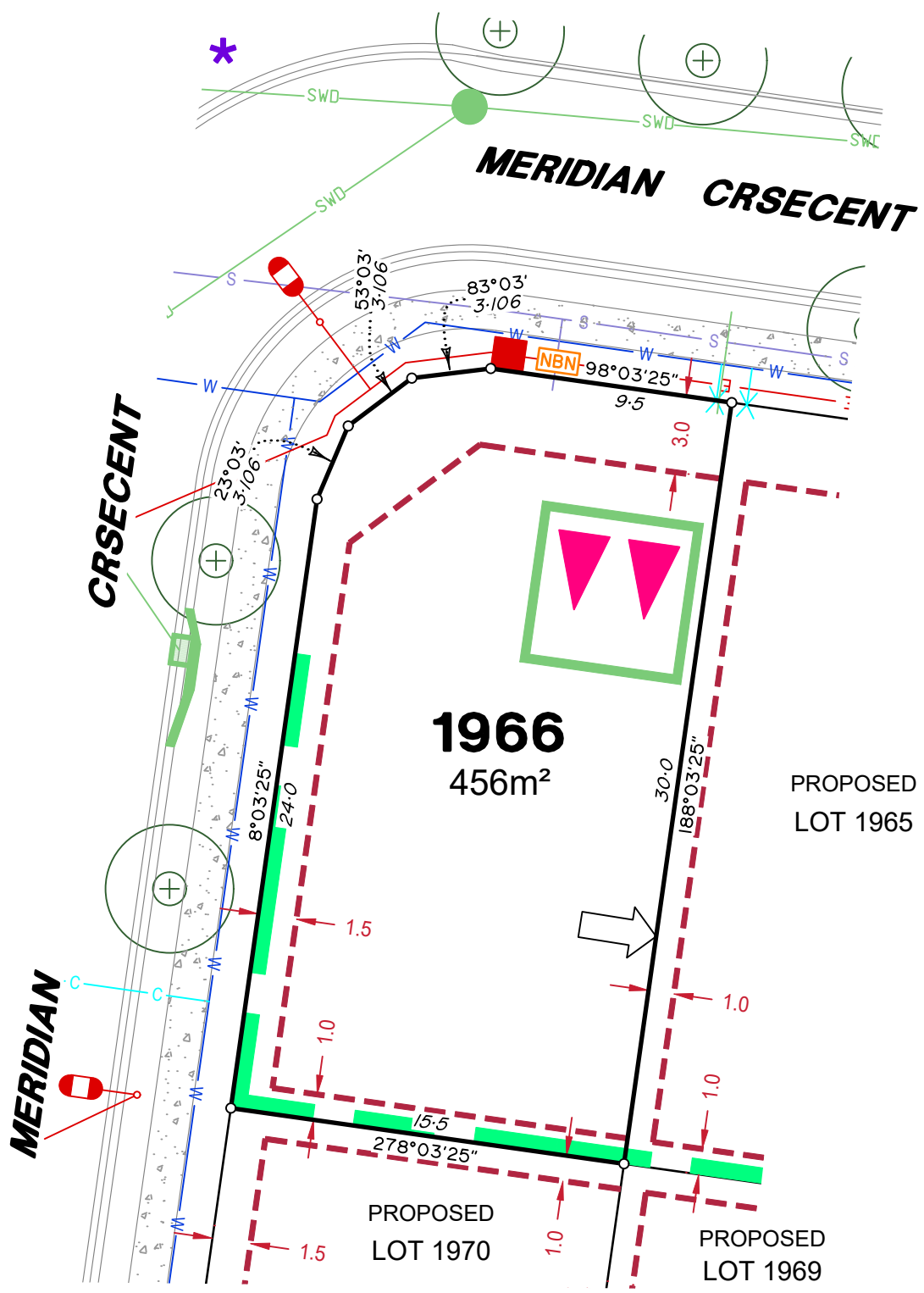
Copyright © Veris Australia Pty Ltd  
**April 2025**

Plot Date: 01 Apr, 2025  
 Computer File Ref: 30109-S4L-SP-(A).dwg



# LEGEND

Rock Retaining Wall shown as:-	
Sleeper Retaining Wall shown as:-	
Landscape Retaining Wall shown as:-	
Sewer line	
Sewer Manhole	
Roofwater Drainage line and Catch Pit	
Stormwater Drainage Line	
Stormwater Manhole	
Stormwater Pit	
Water Main	
Water Conduit	
Water Service Point of Entry	
Underground Electricity, Street Light, Electricity Pillar & NBN	
Developer Fencing	
Concrete Pathway	
Landscape Street Tree	
Zero Setback Building Line	
Indicative Building Envelope	
Bin Pads	
Indicative Parking Access Location	



## ADDITIONAL NOTES:

Allotments used as Multiple Residential Allotments in accordance with the approved Plan of Development may have a reduced primary road setback to 3.0metres as noted on the Plan of Development Table.

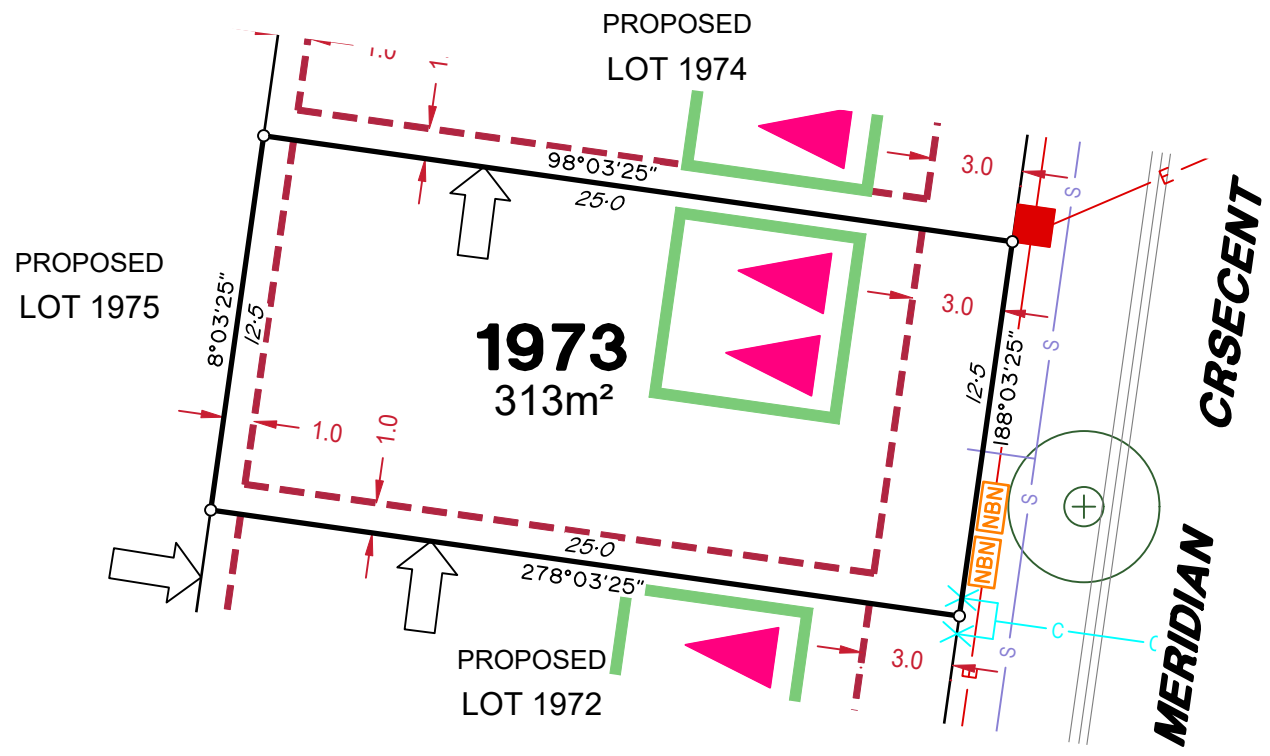
Compaction of any fill material placed on this site shall be completed to level one inspection and testing services in accordance with AS3798-2007.

Location of sewer, roofwater, stormwater, water reticulation and electricity lines, manholes and pits are those shown on engineering design drawings, supplied by Peak Urban and may differ from the as-constructed location.

Plan of Development information Supplied by RPS Group PLC.

Copyright © Veris Australia Pty Ltd  
**April 2025**

Plot Date: 01 Apr, 2025  
Computer File Ref: 30109-St4L-SP-(A).dwg



## LEGEND

Rock Retaining Wall shown as:-	
Sleeper Retaining Wall shown as:-	
Landscape Retaining Wall shown as:-	
Sewer line	
Sewer Manhole	
Roofwater Drainage line and Catch Pit	
Stormwater Drainage Line	
Stormwater Manhole	
Stormwater Pit	
Water Main	
Water Conduit	
Water Service Point of Entry	
Underground Electricity, Street Light, Electricity Pillar & NBN	
Developer Fencing	
Concrete Pathway	
Zero Setback Building Line	
Landscape Street Tree	
Indicative Building Envelope	
Bin Pads	
Indicative Parking Access Location	

### ADDITIONAL NOTES:

Allotments used as Multiple Residential Allotments in accordance with the approved Plan of Development may have a reduced primary road setback to 3.0metres as noted on the Plan of Development Table.

Compaction of any fill material placed on this site shall be completed to level one inspection and testing services in accordance with AS3798-2007.

Location of sewer, roofwater, stormwater, water reticulation and electricity lines, manholes and pits are those shown on engineering design drawings, supplied by Peak Urban and may differ from the as-constructed location.

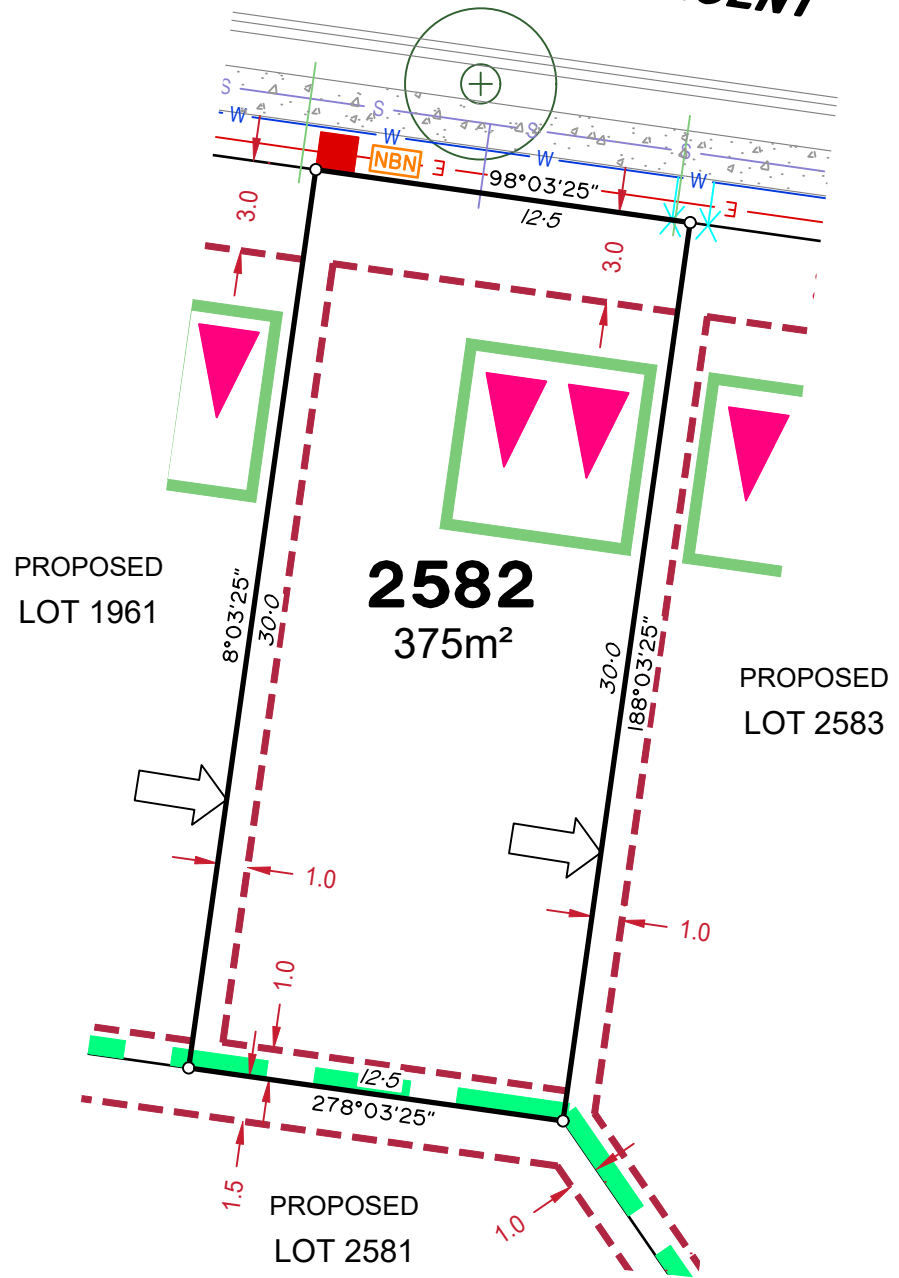
Plan of Development information Supplied by RPS Group PLC.

Copyright © Veris Australia Pty Ltd  
**April 2025**

Plot Date: 01 Apr, 2025  
 Computer File Ref: 30109-St4L-SP-(A).dwg



# MERIDIAN CRSECENT



## LEGEND

- Rock Retaining Wall shown as:-
- Sleeper Retaining Wall shown as:-
- Landscape Retaining Wall shown as:-
- Sewer line
- Sewer Manhole
- Roofwater Drainage line and Catch Pit
- Stormwater Drainage Line
- Stormwater Manhole
- Stormwater Pit
- Water Main
- Water Conduit
- Water Service Point of Entry
- Underground Electricity, Street Light, Electricity Pillar & NBN
- Developer Fencing
- Concrete Pathway
- Zero Setback Building Line
- Landscape Street Tree
- Indicative Building Envelope
- Bin Pads
- Indicative Parking Access Location

### ADDITIONAL NOTES:

Allotments used as Multiple Residential Allotments in accordance with the approved Plan of Development may have a reduced primary road setback to 3.0metres as noted on the Plan of Development Table.

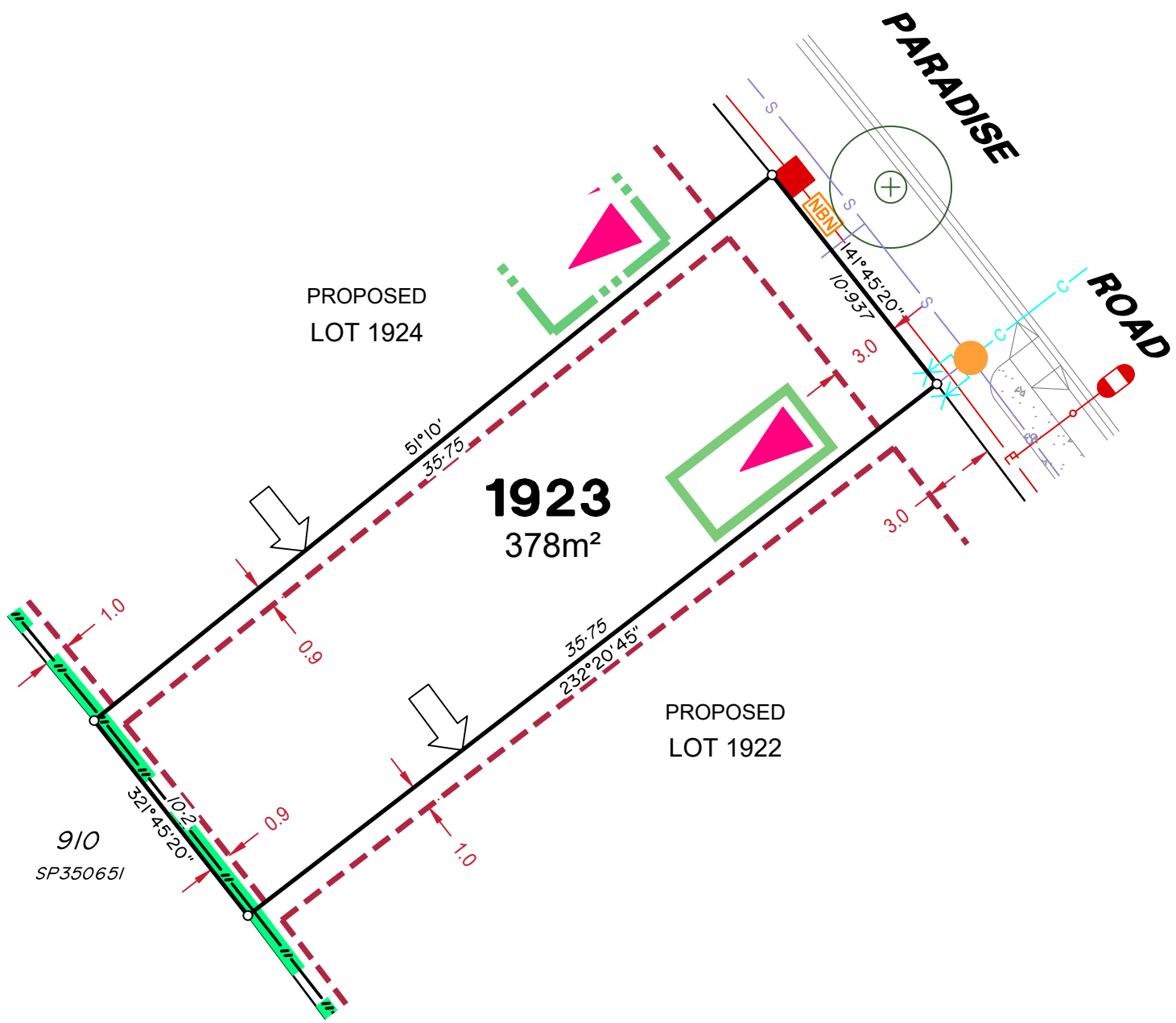
Compaction of any fill material placed on this site shall be completed to level one inspection and testing services in accordance with AS3798-2007.

Location of sewer, roofwater, stormwater, water reticulation and electricity lines, manholes and pits are those shown on engineering design drawings, supplied by Peak Urban and may differ from the as-constructed location.

Plan of Development information Supplied by RPS Group PLC.

Copyright © Veris Australia Pty Ltd  
**April 2025**

Plot Date: 01 Apr, 2025  
 Computer File Ref: 30109-S4L-SP-(A).dwg



## LEGEND

- Rock Retaining Wall shown as:-
- Sleeper Retaining Wall shown as:-
- Landscape Retaining Wall shown as:-
- Sewer line
- Sewer Manhole
- Roofwater Drainage line and Catch Pit
- Stormwater Drainage Line
- Stormwater Manhole
- Stormwater Pit
- Water Main
- Water Conduit
- Water Service Point of Entry
- Underground Electricity, Street Light, Electricity Pillar & NBN
- Developer Fencing
- Concrete Pathway
- Zero Setback Building Line
- Landscape Street Tree
- Indicative Building Envelope
- Bin Pads
- Indicative Parking Access Location

### ADDITIONAL NOTES:

Allotments used as Multiple Residential Allotments in accordance with the approved Plan of Development may have a reduced primary road setback to 3.0metres as noted on the Plan of Development Table.

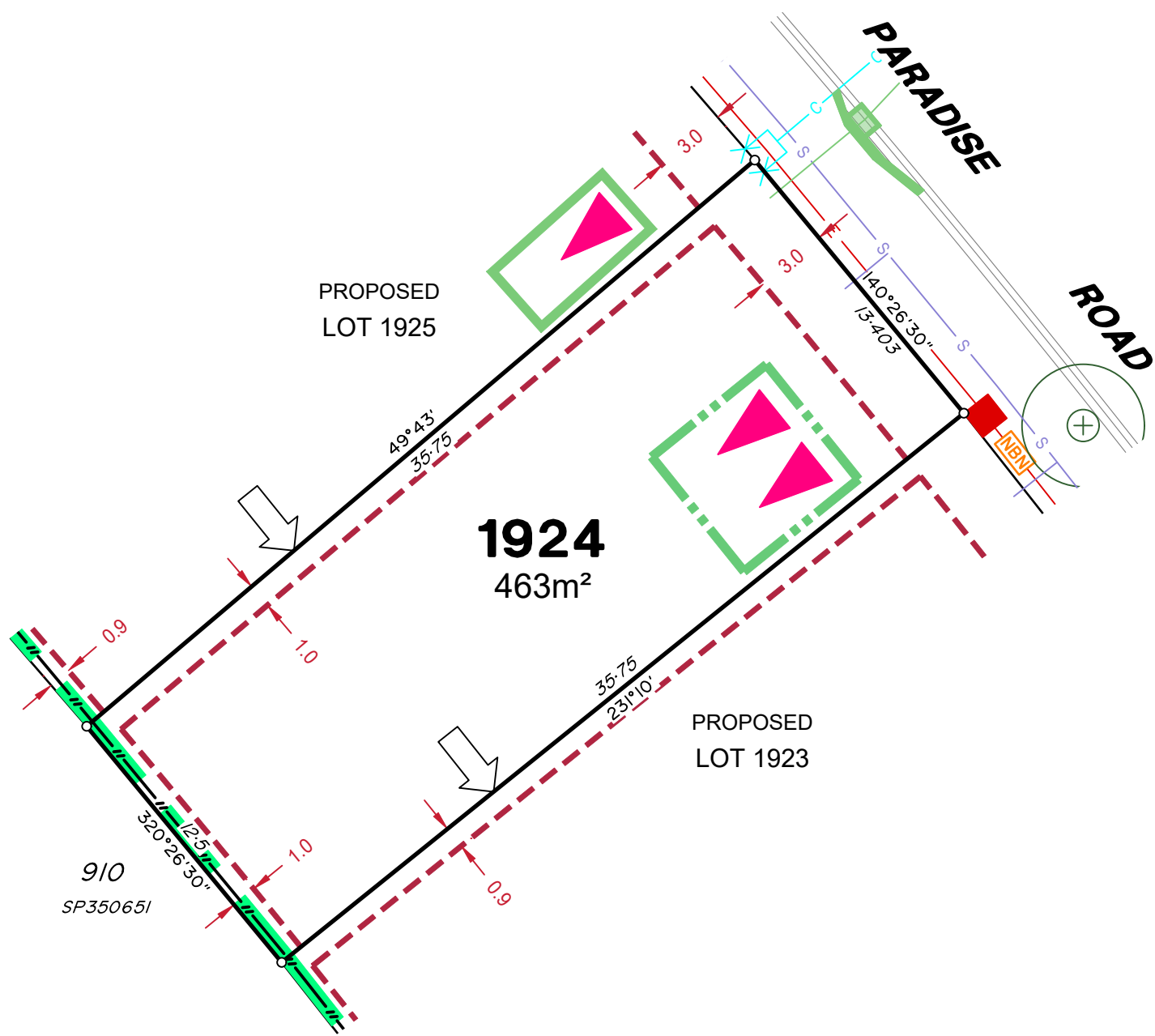
Compaction of any fill material placed on this site shall be completed to level one inspection and testing services in accordance with AS3798-2007.

Location of sewer, roofwater, stormwater, water reticulation and electricity lines, manholes and pits are those shown on engineering design drawings, supplied by Colliers and may differ from the as-constructed location.

Plan of Development information Supplied by RPS Group PLC.

Copyright © Veris Australia Pty Ltd  
**October 2025**

Plot Date: 22 Oct, 2025  
 Computer File Ref: 30109-St4L-SP-(D).dwg



## LEGEND

- Rock Retaining Wall shown as:-
- Sleeper Retaining Wall shown as:-
- Landscape Retaining Wall shown as:-
- Sewer line
- Sewer Manhole
- Roofwater Drainage line and Catch Pit
- Stormwater Drainage Line
- Stormwater Manhole
- Stormwater Pit
- Water Main
- Water Conduit
- Water Service Point of Entry
- Underground Electricity, Street Light, Electricity Pillar & NBN
- Developer Fencing
- Concrete Pathway
- Landscape Street Tree
- Zero Setback Building Line
- Indicative Building Envelope
- Bin Pads
- Indicative Parking Access Location

### ADDITIONAL NOTES:

Allotments used as Multiple Residential Allotments in accordance with the approved Plan of Development may have a reduced primary road setback to 3.0metres as noted on the Plan of Development Table.

Compaction of any fill material placed on this site shall be completed to level one inspection and testing services in accordance with AS3798-2007.

Location of sewer, roofwater, stormwater, water reticulation and electricity lines, manholes and pits are those shown on engineering design drawings, supplied by Colliers and may differ from the as-constructed location.

Plan of Development information Supplied by RPS Group PLC.

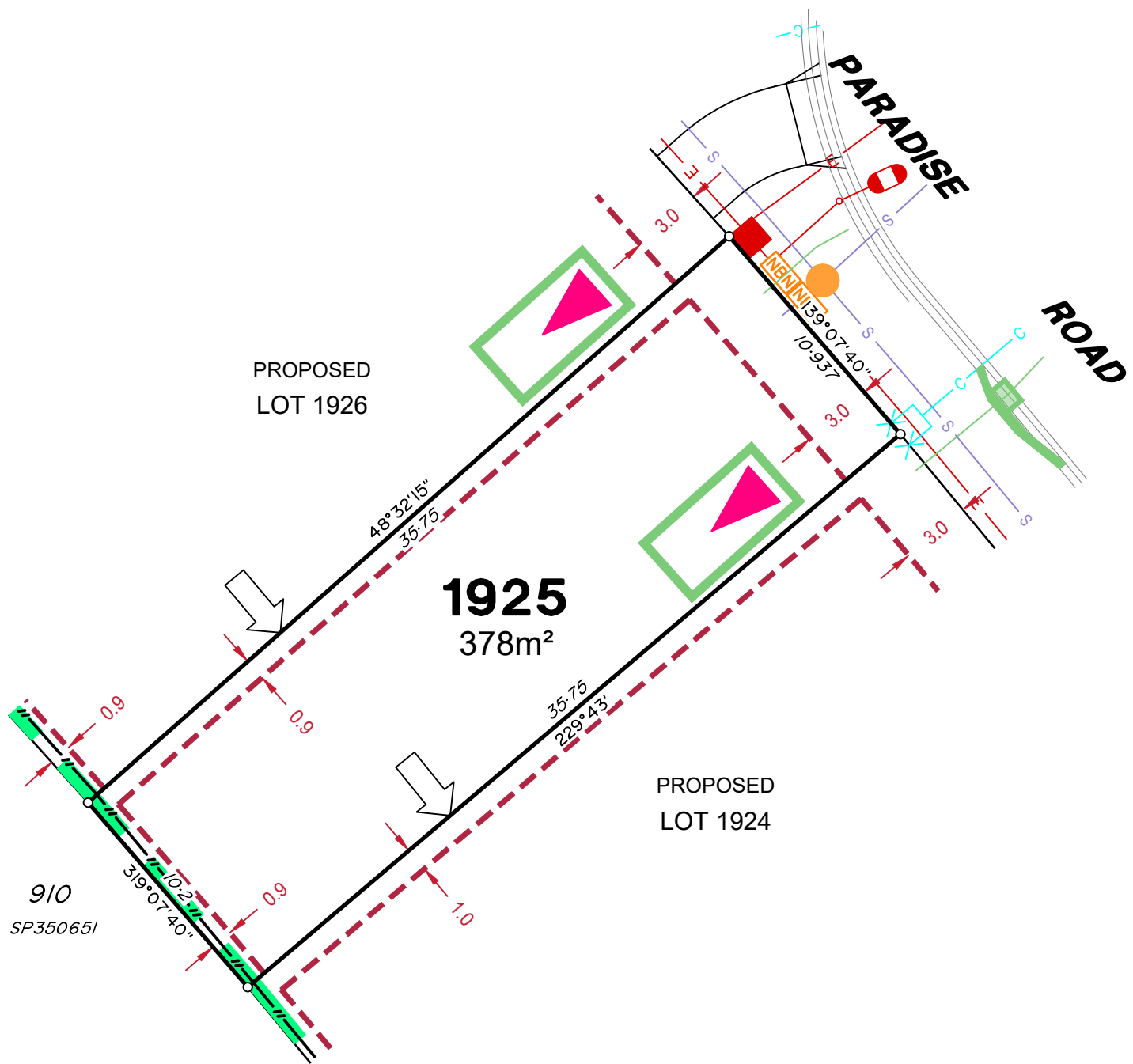
Copyright © Veris Australia Pty Ltd  
**October 2025**

Plot Date: 22 Oct, 2025  
 Computer File Ref: 30109-St4L-SP-(D).dwg



# LEGEND

- Rock Retaining Wall shown as:-
- Sleeper Retaining Wall shown as:-
- Landscape Retaining Wall shown as:-
- Sewer line
- Sewer Manhole
- Roofwater Drainage line and Catch Pit
- Stormwater Drainage Line
- Stormwater Manhole
- Stormwater Pit
- Water Main
- Water Conduit
- Water Service Point of Entry
- Underground Electricity, Street Light, Electricity Pillar & NBN
- Developer Fencing
- Concrete Pathway
- Zero Setback Building Line
- Landscape Street Tree
- Indicative Building Envelope
- Bin Pads
- Indicative Parking Access Location



## ADDITIONAL NOTES:

Allotments used as Multiple Residential Allotments in accordance with the approved Plan of Development may have a reduced primary road setback to 3.0metres as noted on the Plan of Development Table.

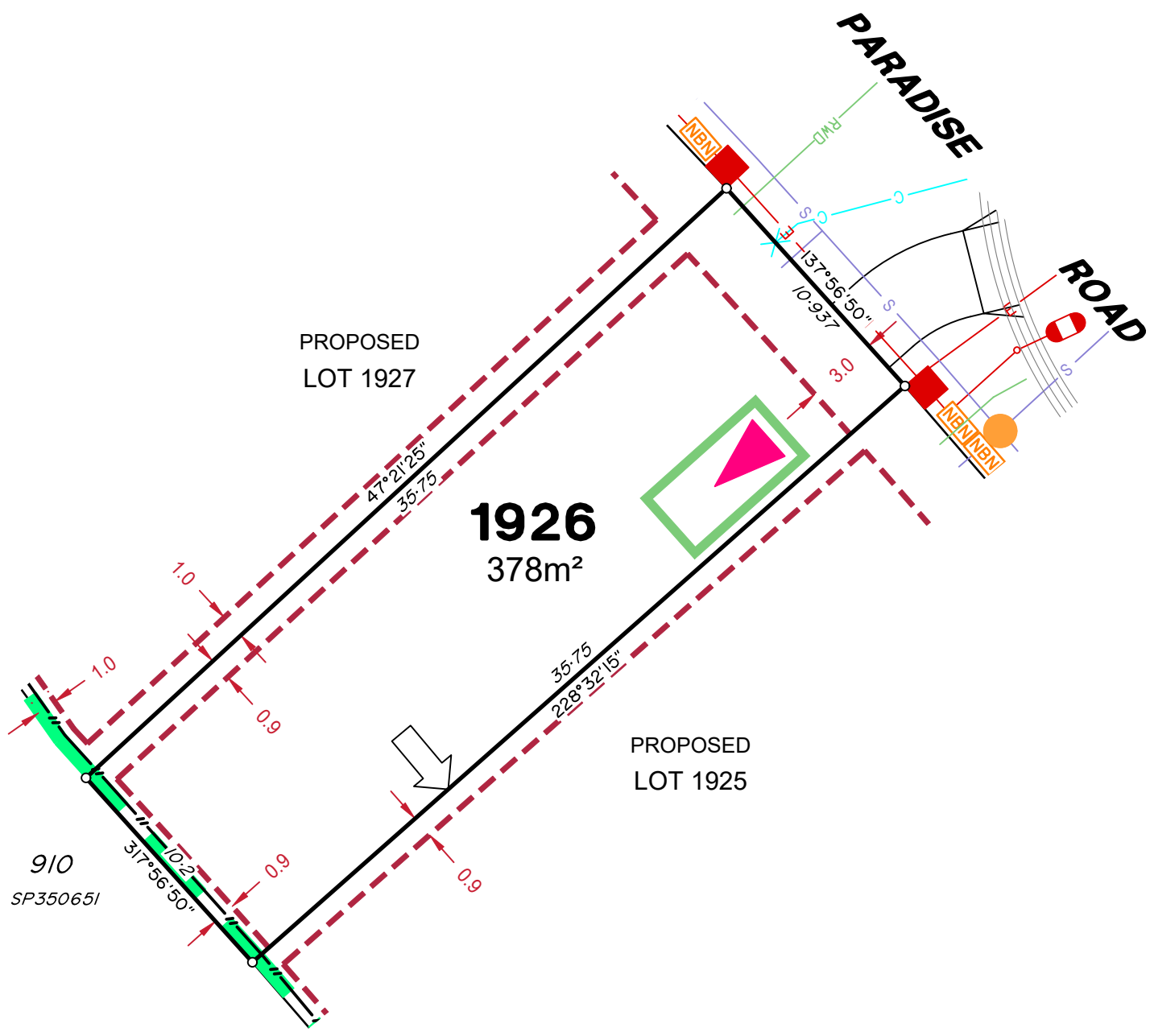
Compaction of any fill material placed on this site shall be completed to level one inspection and testing services in accordance with AS3798-2007.

Location of sewer, roofwater, stormwater, water reticulation and electricity lines, manholes and pits are those shown on engineering design drawings, supplied by Colliers and may differ from the as-constructed location.

Plan of Development information Supplied by RPS Group PLC.

Copyright © Veris Australia Pty Ltd  
**October 2025**

Plot Date: 22 Oct, 2025  
 Computer File Ref: 30109-St4L-SP-(D).dwg



### LEGEND

Rock Retaining Wall shown as:-	
Sleeper Retaining Wall shown as:-	
Landscape Retaining Wall shown as:-	
Sewer line	
Sewer Manhole	
Roofwater Drainage line and Catch Pit	
Stormwater Drainage Line	
Stormwater Manhole	
Stormwater Pit	
Water Main	
Water Conduit	
Water Service Point of Entry	
Underground Electricity, Street Light, Electricity Pillar & NBN	
Developer Fencing	
Concrete Pathway	
Zero Setback Building Line	
Landscape Street Tree	
Indicative Building Envelope	
Bin Pads	
Indicative Parking Access Location	

### ADDITIONAL NOTES:

Allotments used as Multiple Residential Allotments in accordance with the approved Plan of Development may have a reduced primary road setback to 3.0metres as noted on the Plan of Development Table.

Compaction of any fill material placed on this site shall be completed to level one inspection and testing services in accordance with AS3798-2007.

Location of sewer, roofwater, stormwater, water reticulation and electricity lines, manholes and pits are those shown on engineering design drawings, supplied by Colliers and may differ from the as-constructed location.

Plan of Development information Supplied by RPS Group PLC.

Copyright © Veris Australia Pty Ltd  
**October 2025**

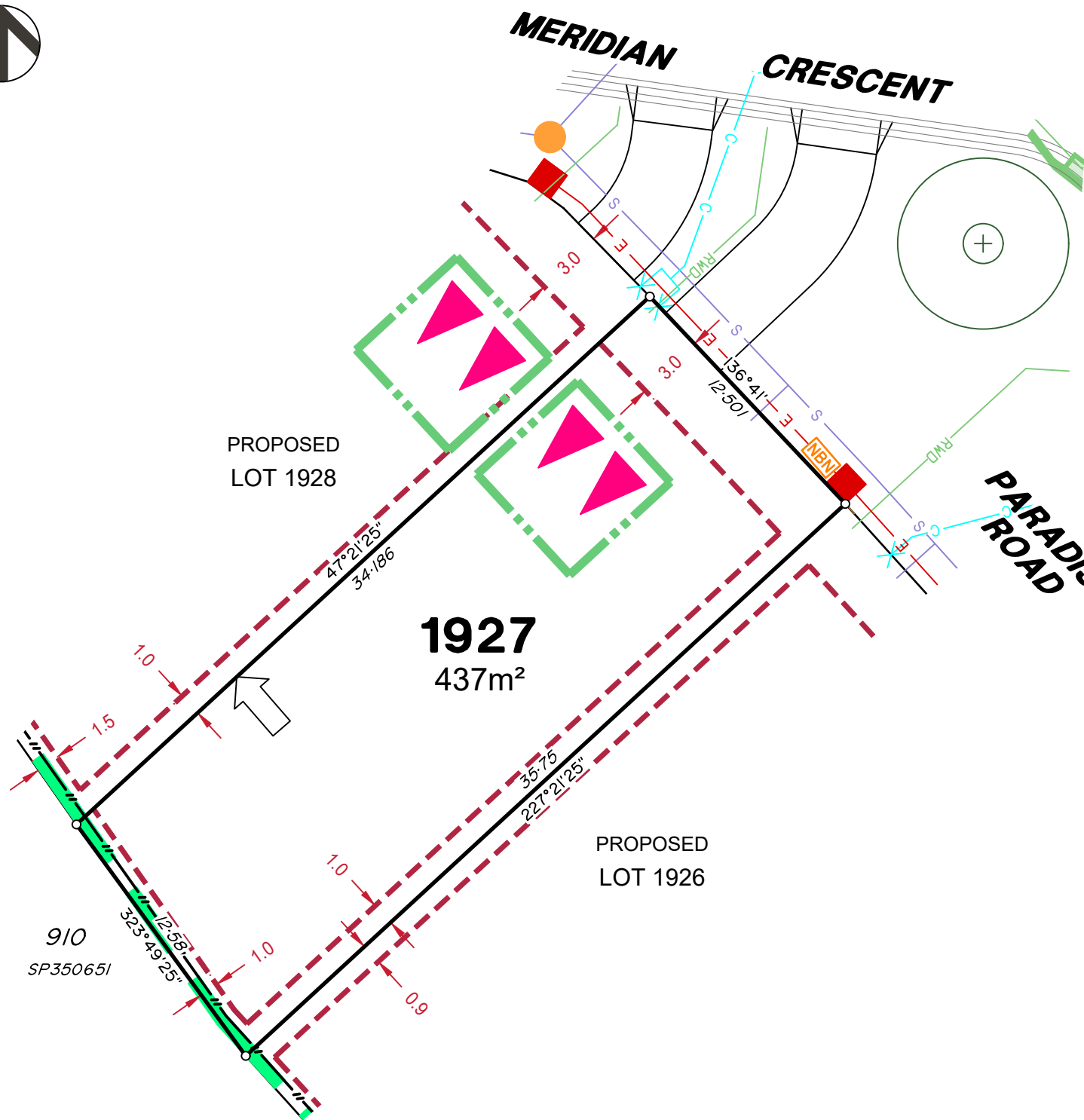
Plot Date: 22 Oct, 2025  
 Computer File Ref: 30109-St4L-SP-(D).dwg



**MERIDIAN**  
**CRESCENT**

### LEGEND

- Rock Retaining Wall shown as:-
- Sleeper Retaining Wall shown as:-
- Landscape Retaining Wall shown as:-
- Sewer line
- Sewer Manhole
- Roofwater Drainage line and Catch Pit
- Stormwater Drainage Line
- Stormwater Manhole
- Stormwater Pit
- Water Main
- Water Conduit
- Water Service Point of Entry
- Underground Electricity, Street Light, Electricity Pillar & NBN
- Developer Fencing
- Concrete Pathway
- Zero Setback Building Line
- Landscape Street Tree
- Indicative Building Envelope
- Bin Pads
- Indicative Parking Access Location



### ADDITIONAL NOTES:

Allotments used as Multiple Residential Allotments in accordance with the approved Plan of Development may have a reduced primary road setback to 3.0metres as noted on the Plan of Development Table.

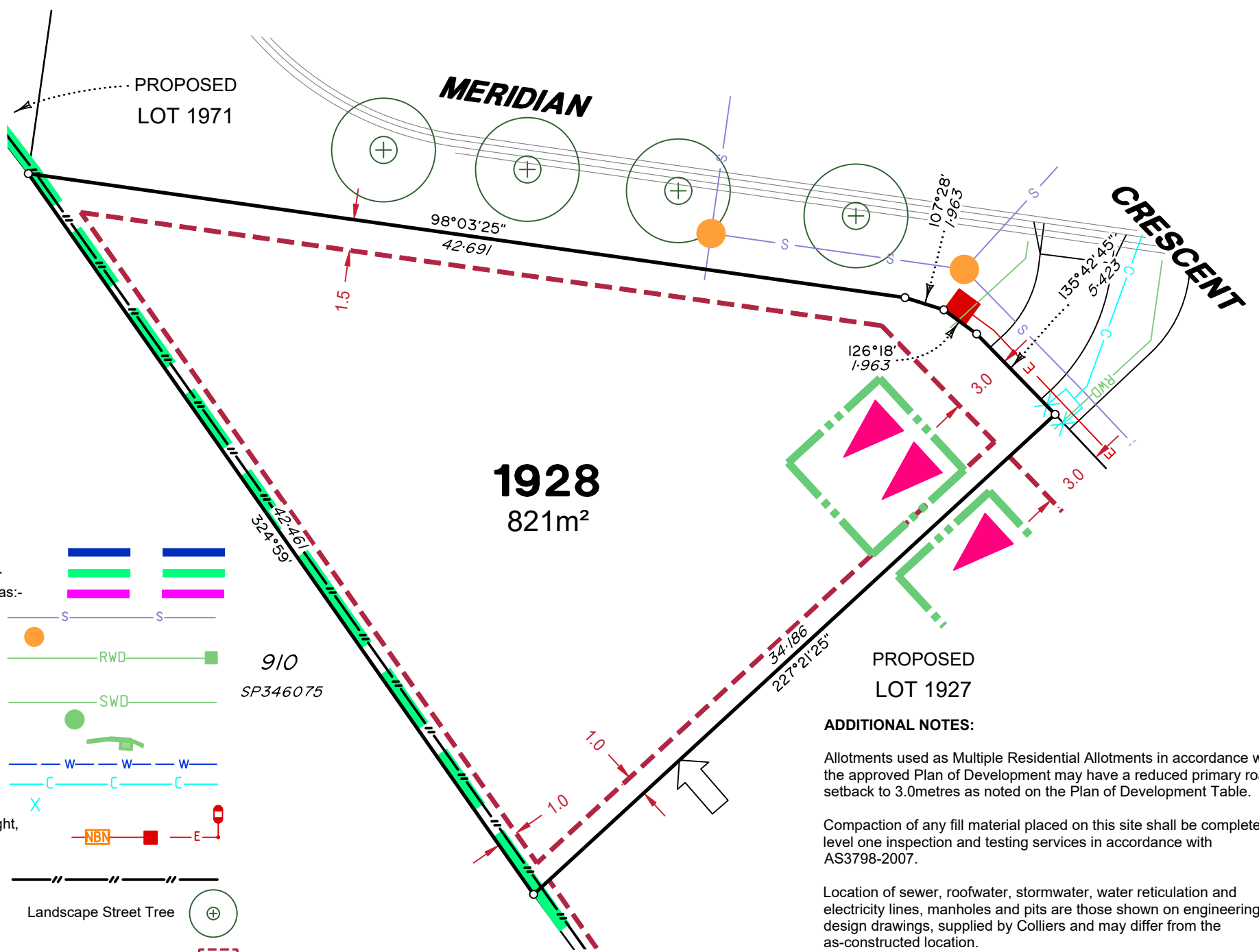
Compaction of any fill material placed on this site shall be completed to level one inspection and testing services in accordance with AS3798-2007.

Location of sewer, roofwater, stormwater, water reticulation and electricity lines, manholes and pits are those shown on engineering design drawings, supplied by Colliers and may differ from the as-constructed location.

Plan of Development information Supplied by RPS Group PLC.

Copyright © Veris Australia Pty Ltd  
**October 2025**

Plot Date: 22 Oct, 2025  
 Computer File Ref: 30109-St4L-SP-(D).dwg



**LEGEND**

- Rock Retaining Wall shown as:-
- Sleeper Retaining Wall shown as:-
- Landscape Retaining Wall shown as:-
- Sewer line
- Sewer Manhole
- Roofwater Drainage line and Catch Pit
- Stormwater Drainage Line
- Stormwater Manhole
- Stormwater Pit
- Water Main
- Water Conduit
- Water Service Point of Entry
- Underground Electricity, Street Light, Electricity Pillar & NBN
- Developer Fencing
- Concrete Pathway
- Landscape Street Tree
- Zero Setback Building Line
- Indicative Building Envelope
- Bin Pads
- Indicative Parking Access Location

**ADDITIONAL NOTES:**

Allotments used as Multiple Residential Allotments in accordance with the approved Plan of Development may have a reduced primary road setback to 3.0metres as noted on the Plan of Development Table.

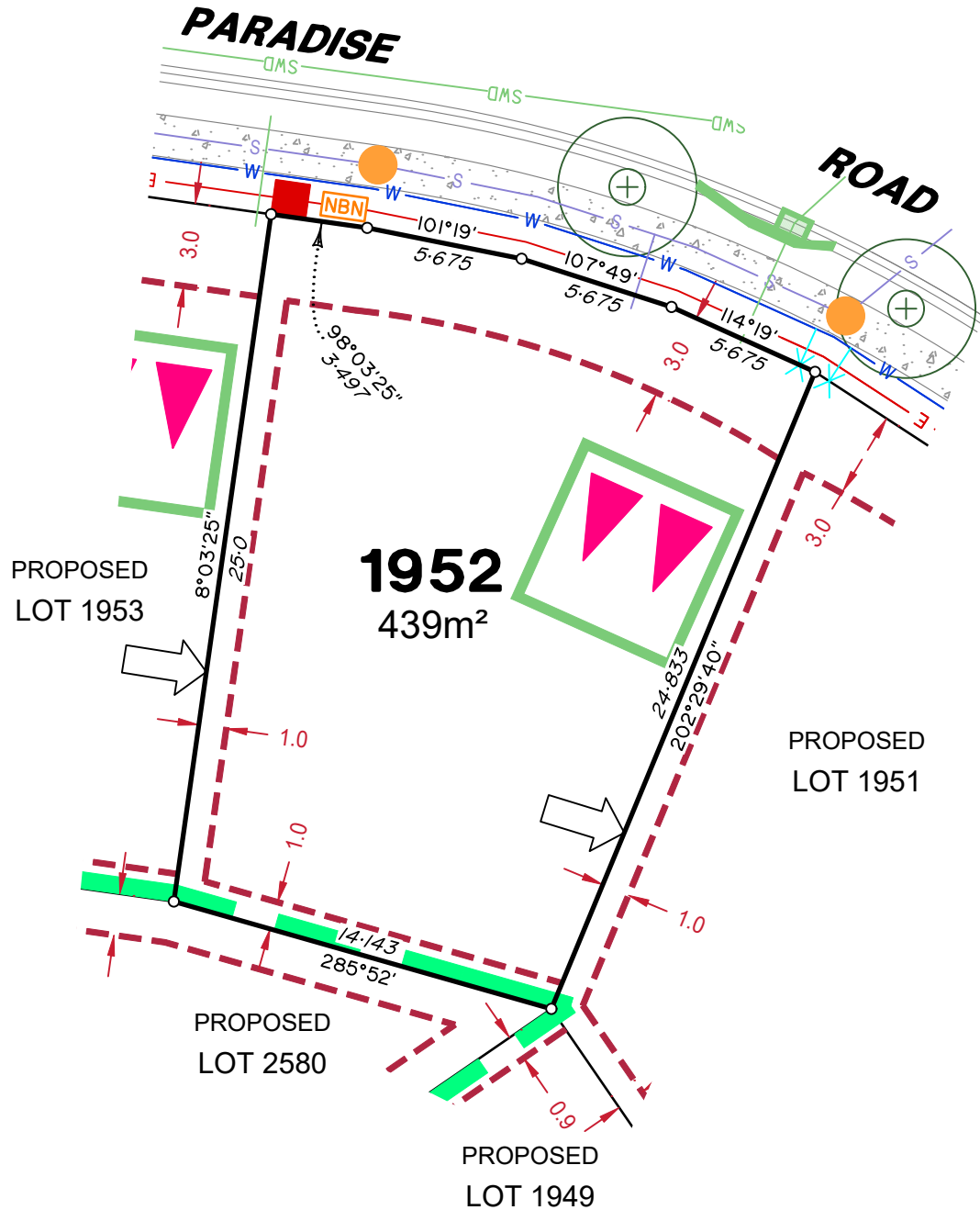
Compaction of any fill material placed on this site shall be completed to level one inspection and testing services in accordance with AS3798-2007.

Location of sewer, roofwater, stormwater, water reticulation and electricity lines, manholes and pits are those shown on engineering design drawings, supplied by Colliers and may differ from the as-constructed location.

Plan of Development information Supplied by RPS Group PLC.

Copyright © Veris Australia Pty Ltd  
**November 2025**

Plot Date: 28 Nov, 2025  
 Computer File Ref: 30109-St4L-SP-(D).dwg



# LEGEND

- Rock Retaining Wall shown as:-
- Sleeper Retaining Wall shown as:-
- Landscape Retaining Wall shown as:-
- Sewer line
- Sewer Manhole
- Roofwater Drainage line and Catch Pit
- Stormwater Drainage Line
- Stormwater Manhole
- Stormwater Pit
- Water Main
- Water Conduit
- Water Service Point of Entry
- Underground Electricity, Street Light, Electricity Pillar & NBN
- Developer Fencing
- Concrete Pathway
- Zero Setback Building Line
- Landscape Street Tree
- Indicative Building Envelope
- Bin Pads
- Indicative Parking Access Location

## ADDITIONAL NOTES:

Allotments used as Multiple Residential Allotments in accordance with the approved Plan of Development may have a reduced primary road setback to 3.0metres as noted on the Plan of Development Table.

Compaction of any fill material placed on this site shall be completed to level one inspection and testing services in accordance with AS3798-2007.

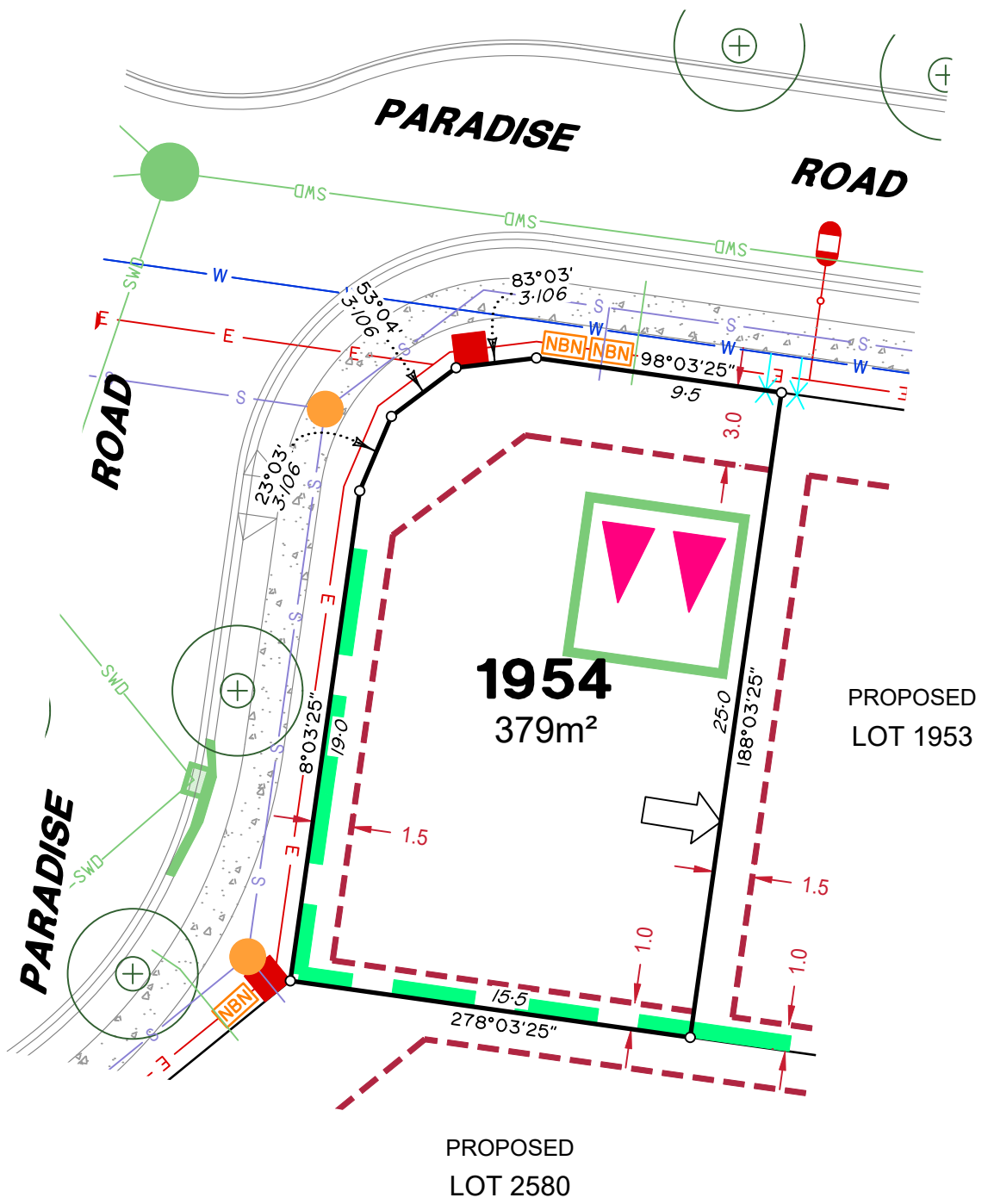
Location of sewer, roofwater, stormwater, water reticulation and electricity lines, manholes and pits are those shown on engineering design drawings, supplied by Colliers and may differ from the as-constructed location.

Plan of Development information Supplied by RPS Group PLC.

Copyright © Veris Australia Pty Ltd  
**October 2025**

Plot Date: 22 Oct, 2025  
 Computer File Ref: 30109-St4L-SP-(D).dwg





## LEGEND

- Rock Retaining Wall shown as:-
- Sleeper Retaining Wall shown as:-
- Landscape Retaining Wall shown as:-
- Sewer line
- Sewer Manhole
- Roofwater Drainage line and Catch Pit
- Stormwater Drainage Line
- Stormwater Manhole
- Stormwater Pit
- Water Main
- Water Conduit
- Water Service Point of Entry
- Underground Electricity, Street Light, Electricity Pillar & NBN
- Developer Fencing
- Concrete Pathway
- Landscape Street Tree
- Zero Setback Building Line
- Indicative Building Envelope
- Bin Pads
- Indicative Parking Access Location

### ADDITIONAL NOTES:

Allotments used as Multiple Residential Allotments in accordance with the approved Plan of Development may have a reduced primary road setback to 3.0metres as noted on the Plan of Development Table.

Compaction of any fill material placed on this site shall be completed to level one inspection and testing services in accordance with AS3798-2007.

Location of sewer, roofwater, stormwater, water reticulation and electricity lines, manholes and pits are those shown on engineering design drawings, supplied by Colliers and may differ from the as-constructed location.

Plan of Development information Supplied by RPS Group PLC.

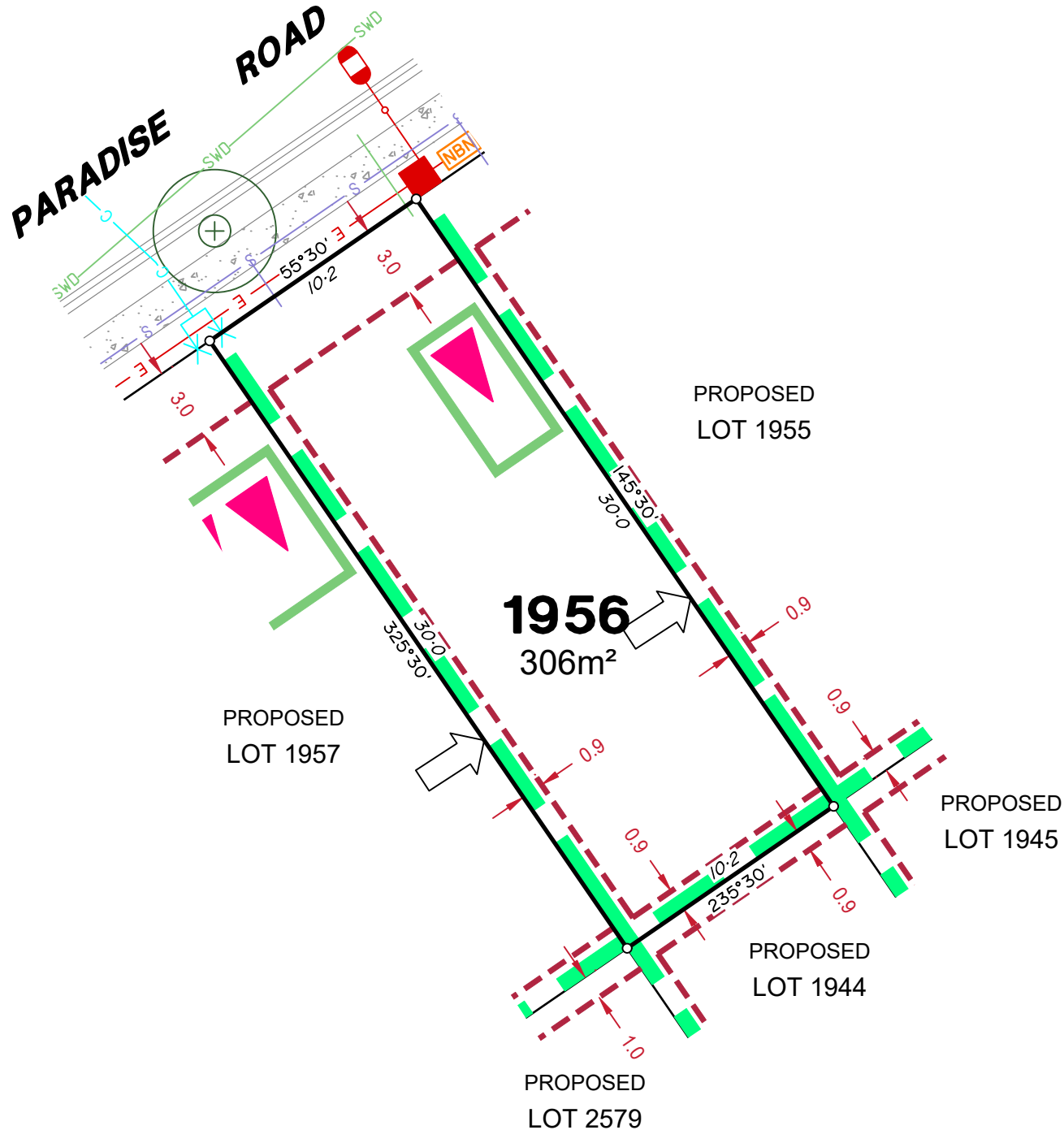
Copyright © Veris Australia Pty Ltd  
**October 2025**

Plot Date: 22 Oct, 2025  
 Computer File Ref: 30109-St4L-SP-(D).dwg





**PARADISE ROAD**



## LEGEND

Rock Retaining Wall shown as:-	
Sleeper Retaining Wall shown as:-	
Landscape Retaining Wall shown as:-	
Sewer line	
Sewer Manhole	
Roofwater Drainage line and Catch Pit	
Stormwater Drainage Line	
Stormwater Manhole	
Stormwater Pit	
Water Main	
Water Conduit	
Water Service Point of Entry	
Underground Electricity, Street Light, Electricity Pillar & NBN	
Developer Fencing	
Concrete Pathway	
Zero Setback Building Line	
Landscape Street Tree	
Indicative Building Envelope	
Bin Pads	
Indicative Parking Access Location	

### ADDITIONAL NOTES:

Allotments used as Multiple Residential Allotments in accordance with the approved Plan of Development may have a reduced primary road setback to 3.0metres as noted on the Plan of Development Table.

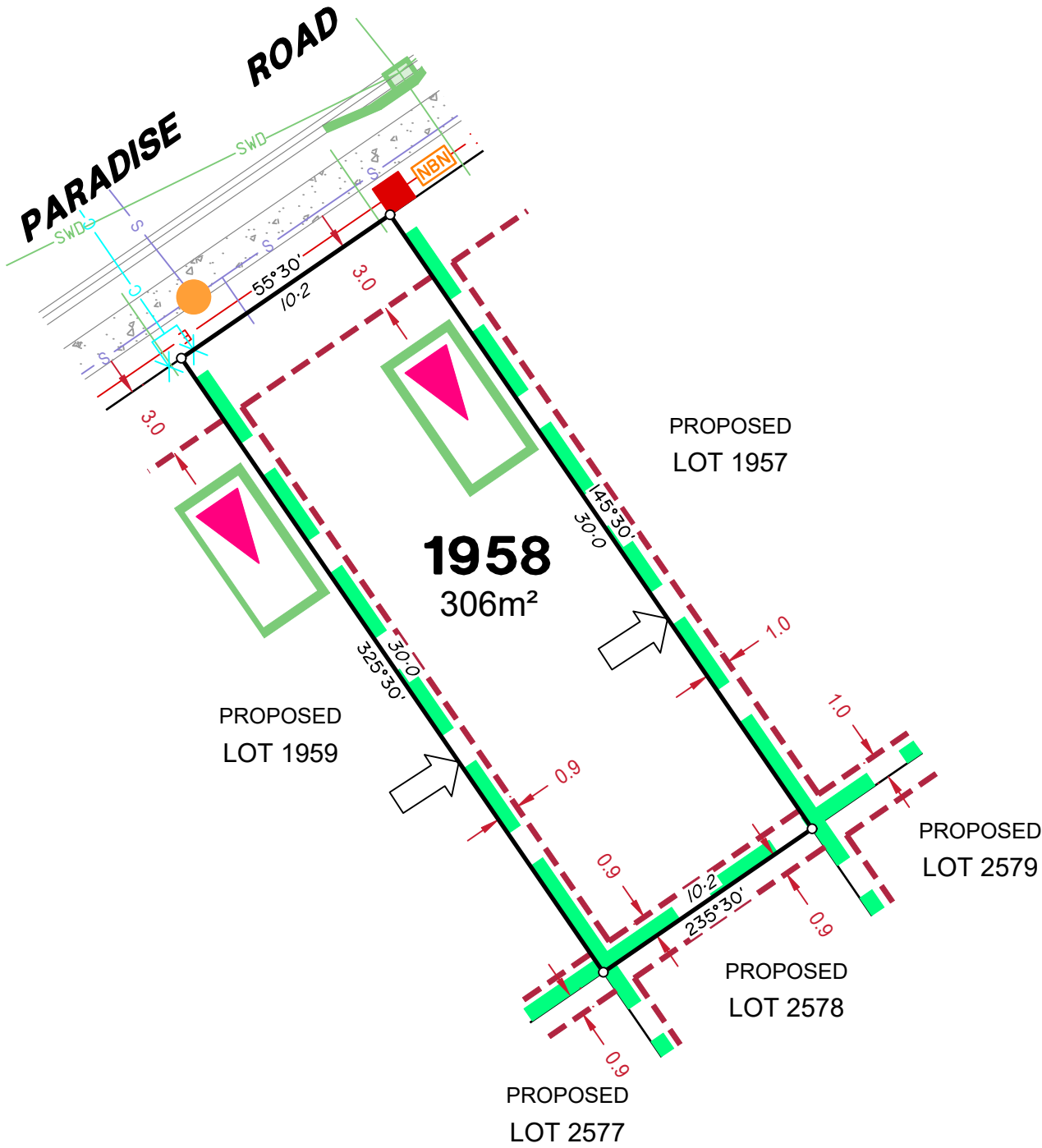
Compaction of any fill material placed on this site shall be completed to level one inspection and testing services in accordance with AS3798-2007.

Location of sewer, roofwater, stormwater, water reticulation and electricity lines, manholes and pits are those shown on engineering design drawings, supplied by Colliers and may differ from the as-constructed location.

Plan of Development information Supplied by RPS Group PLC.

Copyright © Veris Australia Pty Ltd  
**October 2025**

Plot Date: 22 Oct, 2025  
Computer File Ref: 30109-St4L-SP-(D).dwg



# LEGEND

- Rock Retaining Wall shown as:-
- Sleeper Retaining Wall shown as:-
- Landscape Retaining Wall shown as:-
- Sewer line
- Sewer Manhole
- Roofwater Drainage line and Catch Pit
- Stormwater Drainage Line
- Stormwater Manhole
- Stormwater Pit
- Water Main
- Water Conduit
- Water Service Point of Entry
- Underground Electricity, Street Light, Electricity Pillar & NBN
- Developer Fencing
- Concrete Pathway
- Zero Setback Building Line
- Landscape Street Tree
- Indicative Building Envelope
- Bin Pads
- Indicative Parking Access Location

## ADDITIONAL NOTES:

Allotments used as Multiple Residential Allotments in accordance with the approved Plan of Development may have a reduced primary road setback to 3.0metres as noted on the Plan of Development Table.

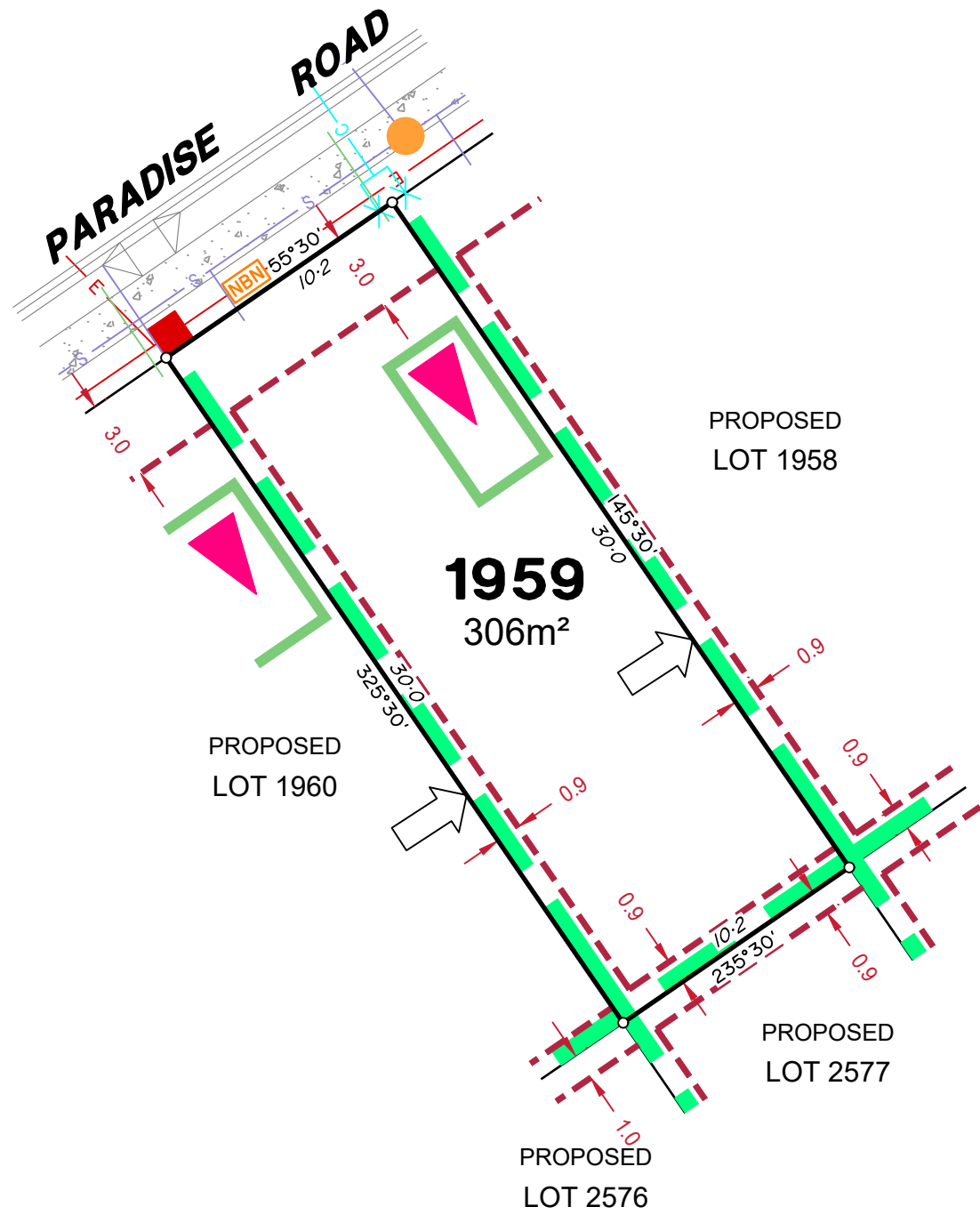
Compaction of any fill material placed on this site shall be completed to level one inspection and testing services in accordance with AS3798-2007.

Location of sewer, roofwater, stormwater, water reticulation and electricity lines, manholes and pits are those shown on engineering design drawings, supplied by Colliers and may differ from the as-constructed location.

Plan of Development information Supplied by RPS Group PLC.

Copyright © Veris Australia Pty Ltd  
**October 2025**

Plot Date: 22 Oct, 2025  
 Computer File Ref: 30109-St4L-SP-(D).dwg



## LEGEND

Rock Retaining Wall shown as:-	
Sleeper Retaining Wall shown as:-	
Landscape Retaining Wall shown as:-	
Sewer line	
Sewer Manhole	
Roofwater Drainage line and Catch Pit	
Stormwater Drainage Line	
Stormwater Manhole	
Stormwater Pit	
Water Main	
Water Conduit	
Water Service Point of Entry	
Underground Electricity, Street Light, Electricity Pillar & NBN	
Developer Fencing	
Concrete Pathway	
Landscape Street Tree	
Zero Setback Building Line	
Indicative Building Envelope	
Bin Pads	
Indicative Parking Access Location	

### ADDITIONAL NOTES:

Allotments used as Multiple Residential Allotments in accordance with the approved Plan of Development may have a reduced primary road setback to 3.0metres as noted on the Plan of Development Table.

Compaction of any fill material placed on this site shall be completed to level one inspection and testing services in accordance with AS3798-2007.

Location of sewer, roofwater, stormwater, water reticulation and electricity lines, manholes and pits are those shown on engineering design drawings, supplied by Colliers and may differ from the as-constructed location.

Plan of Development information Supplied by RPS Group PLC.

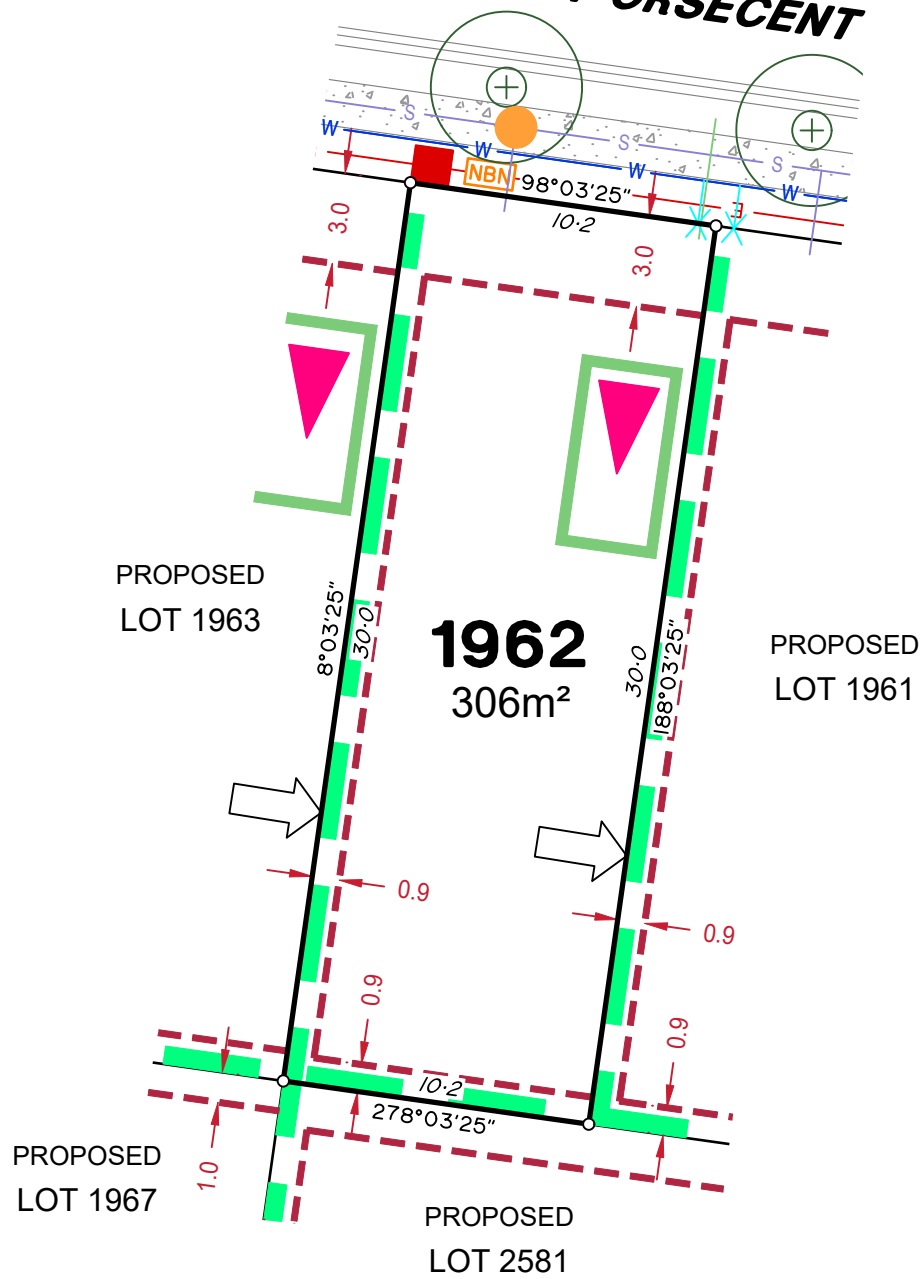
Copyright © Veris Australia Pty Ltd  
**October 2025**

Plot Date: 22 Oct, 2025  
 Computer File Ref: 30109-St4L-SP-(D).dwg





# MERIDIAN CRSECENT



## LEGEND

- Rock Retaining Wall shown as:-
- Sleeper Retaining Wall shown as:-
- Landscape Retaining Wall shown as:-
- Sewer line
- Sewer Manhole
- Roofwater Drainage line and Catch Pit
- Stormwater Drainage Line
- Stormwater Manhole
- Stormwater Pit
- Water Main
- Water Conduit
- Water Service Point of Entry
- Underground Electricity, Street Light, Electricity Pillar & NBN
- Developer Fencing
- Concrete Pathway
- Zero Setback Building Line
- Landscape Street Tree
- Indicative Building Envelope
- Bin Pads
- Indicative Parking Access Location

### ADDITIONAL NOTES:

Allotments used as Multiple Residential Allotments in accordance with the approved Plan of Development may have a reduced primary road setback to 3.0metres as noted on the Plan of Development Table.

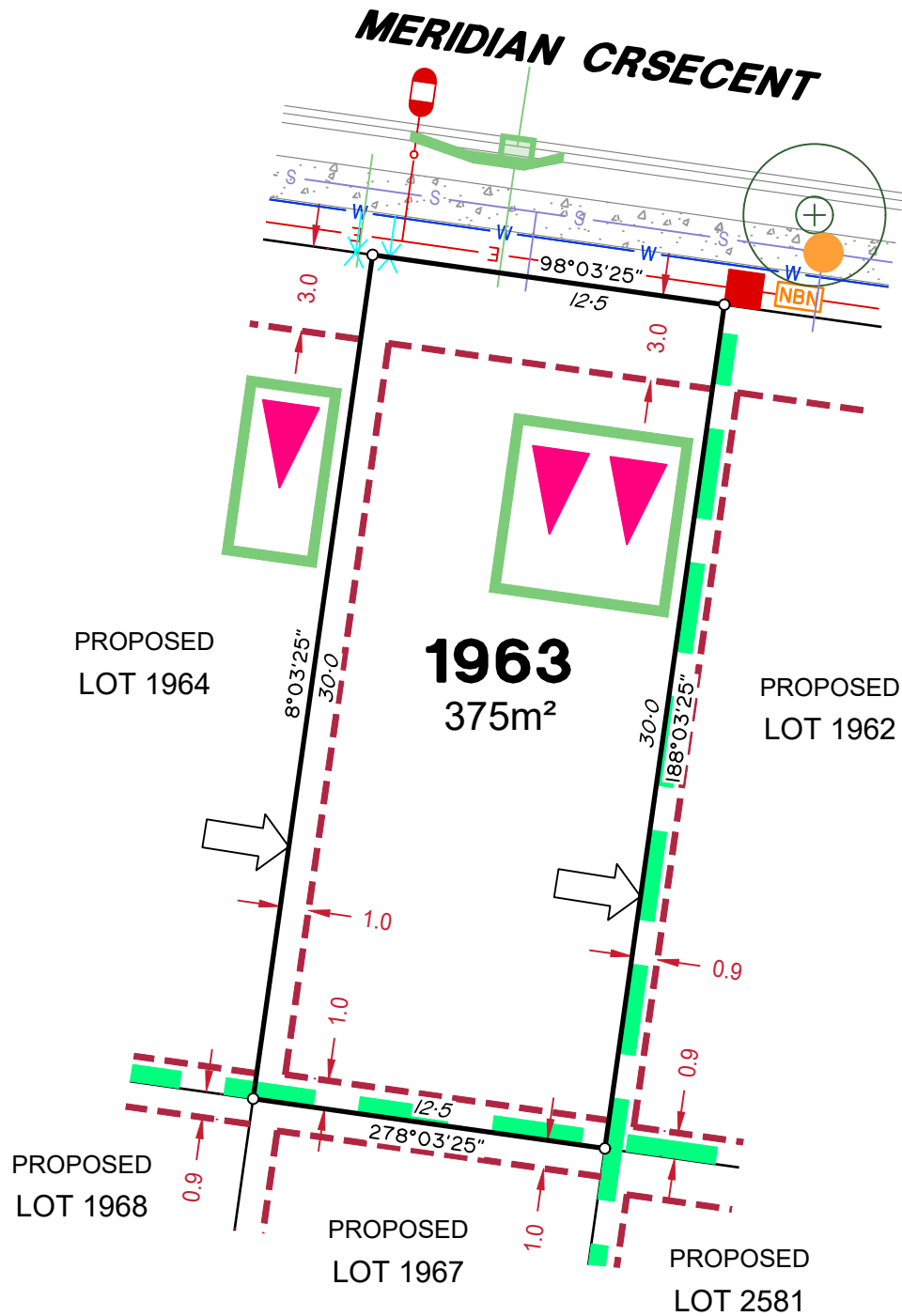
Compaction of any fill material placed on this site shall be completed to level one inspection and testing services in accordance with AS3798-2007.

Location of sewer, roofwater, stormwater, water reticulation and electricity lines, manholes and pits are those shown on engineering design drawings, supplied by Colliers and may differ from the as-constructed location.

Plan of Development information Supplied by RPS Group PLC.

Copyright © Veris Australia Pty Ltd  
**October 2025**

Plot Date: 22 Oct, 2025  
 Computer File Ref: 30109-St4L-SP-(D).dwg



## LEGEND

Rock Retaining Wall shown as:-	
Sleeper Retaining Wall shown as:-	
Landscape Retaining Wall shown as:-	
Sewer line	
Sewer Manhole	
Roofwater Drainage line and Catch Pit	
Stormwater Drainage Line	
Stormwater Manhole	
Stormwater Pit	
Water Main	
Water Conduit	
Water Service Point of Entry	
Underground Electricity, Street Light, Electricity Pillar & NBN	
Developer Fencing	
Concrete Pathway	
Zero Setback Building Line	
Landscape Street Tree	
Indicative Building Envelope	
Bin Pads	
Indicative Parking Access Location	

### ADDITIONAL NOTES:

Allotments used as Multiple Residential Allotments in accordance with the approved Plan of Development may have a reduced primary road setback to 3.0metres as noted on the Plan of Development Table.

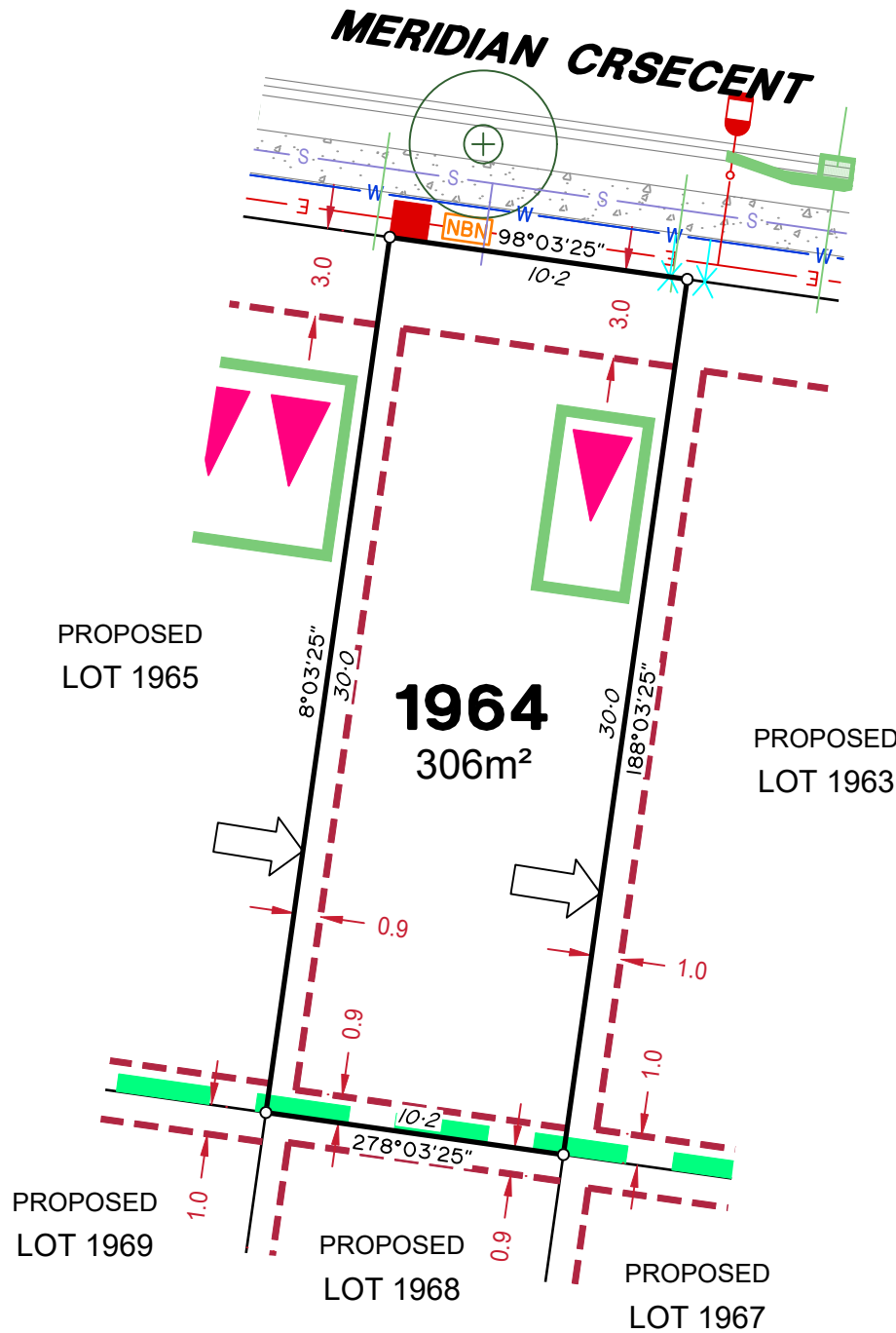
Compaction of any fill material placed on this site shall be completed to level one inspection and testing services in accordance with AS3798-2007.

Location of sewer, roofwater, stormwater, water reticulation and electricity lines, manholes and pits are those shown on engineering design drawings, supplied by Colliers and may differ from the as-constructed location.

Plan of Development information Supplied by RPS Group PLC.

Copyright © Veris Australia Pty Ltd  
**October 2025**

Plot Date: 22 Oct, 2025  
 Computer File Ref: 30109-S4L-SP-(D).dwg



## LEGEND

Rock Retaining Wall shown as:-	
Sleeper Retaining Wall shown as:-	
Landscape Retaining Wall shown as:-	
Sewer line	
Sewer Manhole	
Roofwater Drainage line and Catch Pit	
Stormwater Drainage Line	
Stormwater Manhole	
Stormwater Pit	
Water Main	
Water Conduit	
Water Service Point of Entry	
Underground Electricity, Street Light, Electricity Pillar & NBN	
Developer Fencing	
Concrete Pathway	
Zero Setback Building Line	
Landscape Street Tree	
Indicative Building Envelope	
Bin Pads	
Indicative Parking Access Location	

### ADDITIONAL NOTES:

Allotments used as Multiple Residential Allotments in accordance with the approved Plan of Development may have a reduced primary road setback to 3.0metres as noted on the Plan of Development Table.

Compaction of any fill material placed on this site shall be completed to level one inspection and testing services in accordance with AS3798-2007.

Location of sewer, roofwater, stormwater, water reticulation and electricity lines, manholes and pits are those shown on engineering design drawings, supplied by Colliers and may differ from the as-constructed location.

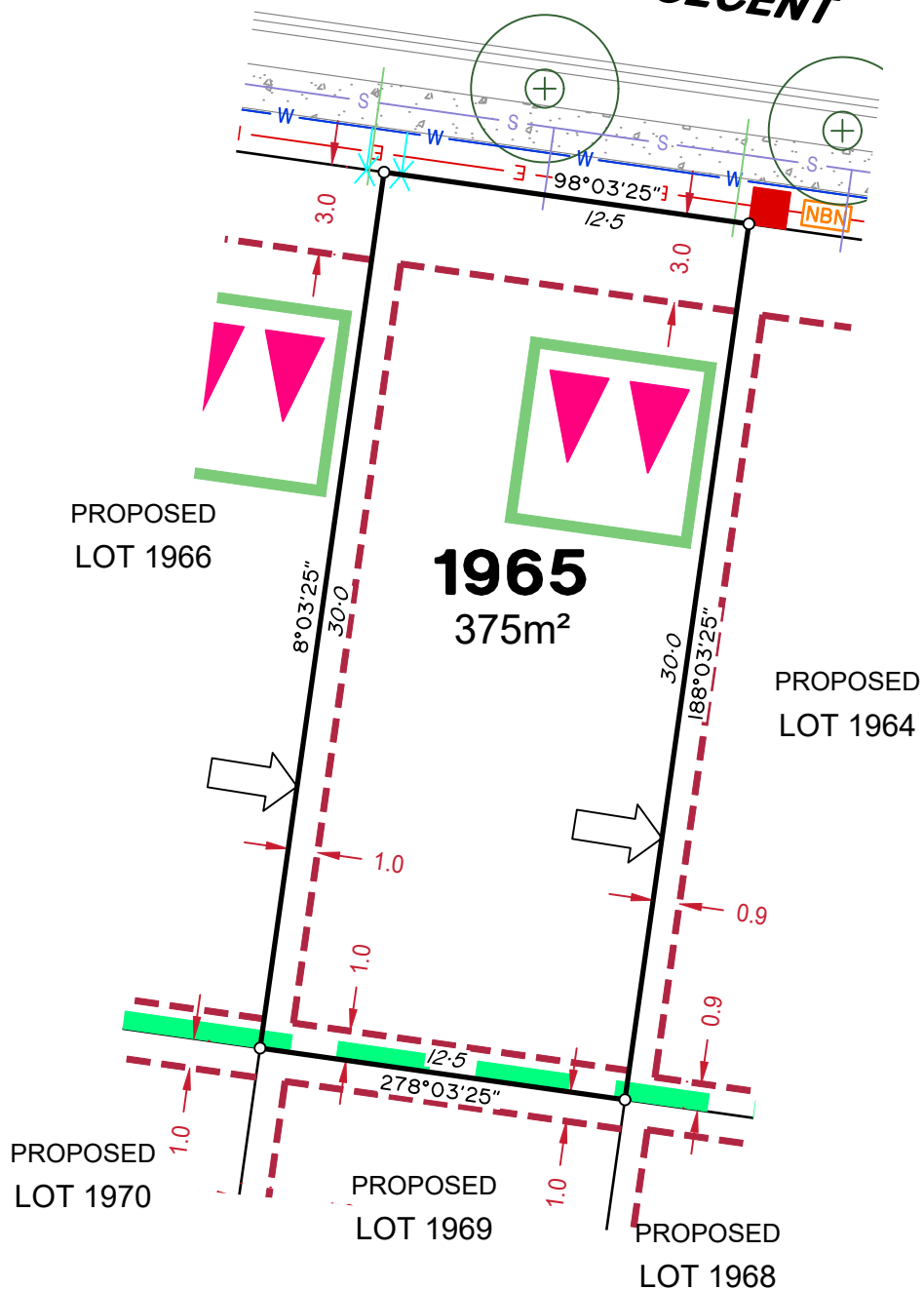
Plan of Development information Supplied by RPS Group PLC.

Copyright © Veris Australia Pty Ltd  
**October 2025**

Plot Date: 22 Oct, 2025  
 Computer File Ref: 30109-St4L-SP-(D).dwg



# MERIDIAN CRSECENT



## LEGEND

- Rock Retaining Wall shown as:-
- Sleeper Retaining Wall shown as:-
- Landscape Retaining Wall shown as:-
- Sewer line
- Sewer Manhole
- Roofwater Drainage line and Catch Pit
- Stormwater Drainage Line
- Stormwater Manhole
- Stormwater Pit
- Water Main
- Water Conduit
- Water Service Point of Entry
- Underground Electricity, Street Light, Electricity Pillar & NBN
- Developer Fencing
- Concrete Pathway
- Zero Setback Building Line
- Landscape Street Tree
- Indicative Building Envelope
- Bin Pads
- Indicative Parking Access Location

### ADDITIONAL NOTES:

Allotments used as Multiple Residential Allotments in accordance with the approved Plan of Development may have a reduced primary road setback to 3.0metres as noted on the Plan of Development Table.

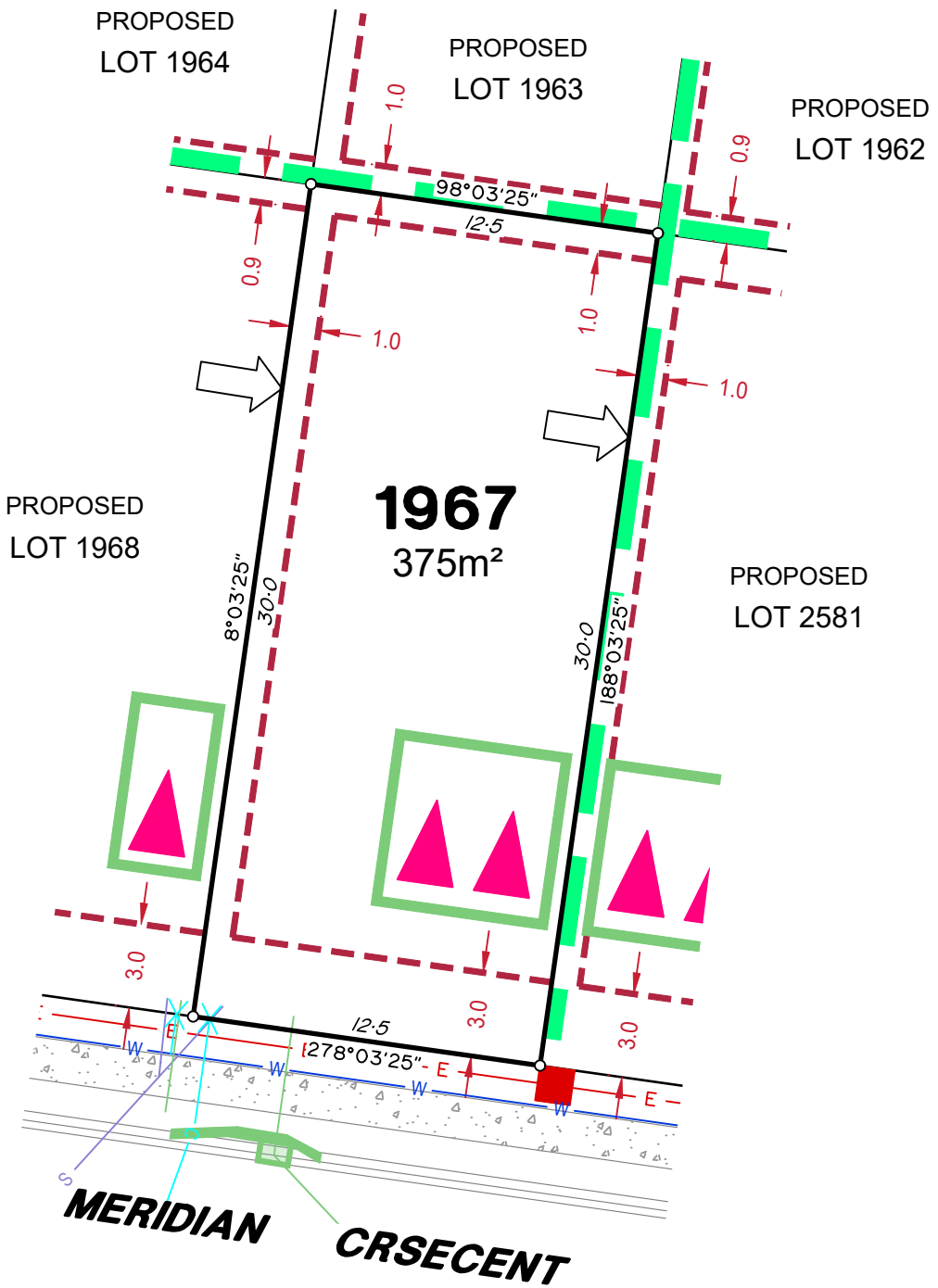
Compaction of any fill material placed on this site shall be completed to level one inspection and testing services in accordance with AS3798-2007.

Location of sewer, roofwater, stormwater, water reticulation and electricity lines, manholes and pits are those shown on engineering design drawings, supplied by Colliers and may differ from the as-constructed location.

Plan of Development information Supplied by RPS Group PLC.

Copyright © Veris Australia Pty Ltd  
**November 2025**

Plot Date: 28 Nov, 2025  
 Computer File Ref: 30109-St4L-SP-(D).dwg



### LEGEND

- Rock Retaining Wall shown as:-
- Sleeper Retaining Wall shown as:-
- Landscape Retaining Wall shown as:-
- Sewer line
- Sewer Manhole
- Roofwater Drainage line and Catch Pit
- Stormwater Drainage Line
- Stormwater Manhole
- Stormwater Pit
- Water Main
- Water Conduit
- Water Service Point of Entry
- Underground Electricity, Street Light, Electricity Pillar & NBN
- Developer Fencing
- Concrete Pathway
- Landscape Street Tree
- Zero Setback Building Line
- Indicative Building Envelope
- Bin Pads
- Indicative Parking Access Location

### ADDITIONAL NOTES:

Allotments used as Multiple Residential Allotments in accordance with the approved Plan of Development may have a reduced primary road setback to 3.0metres as noted on the Plan of Development Table.

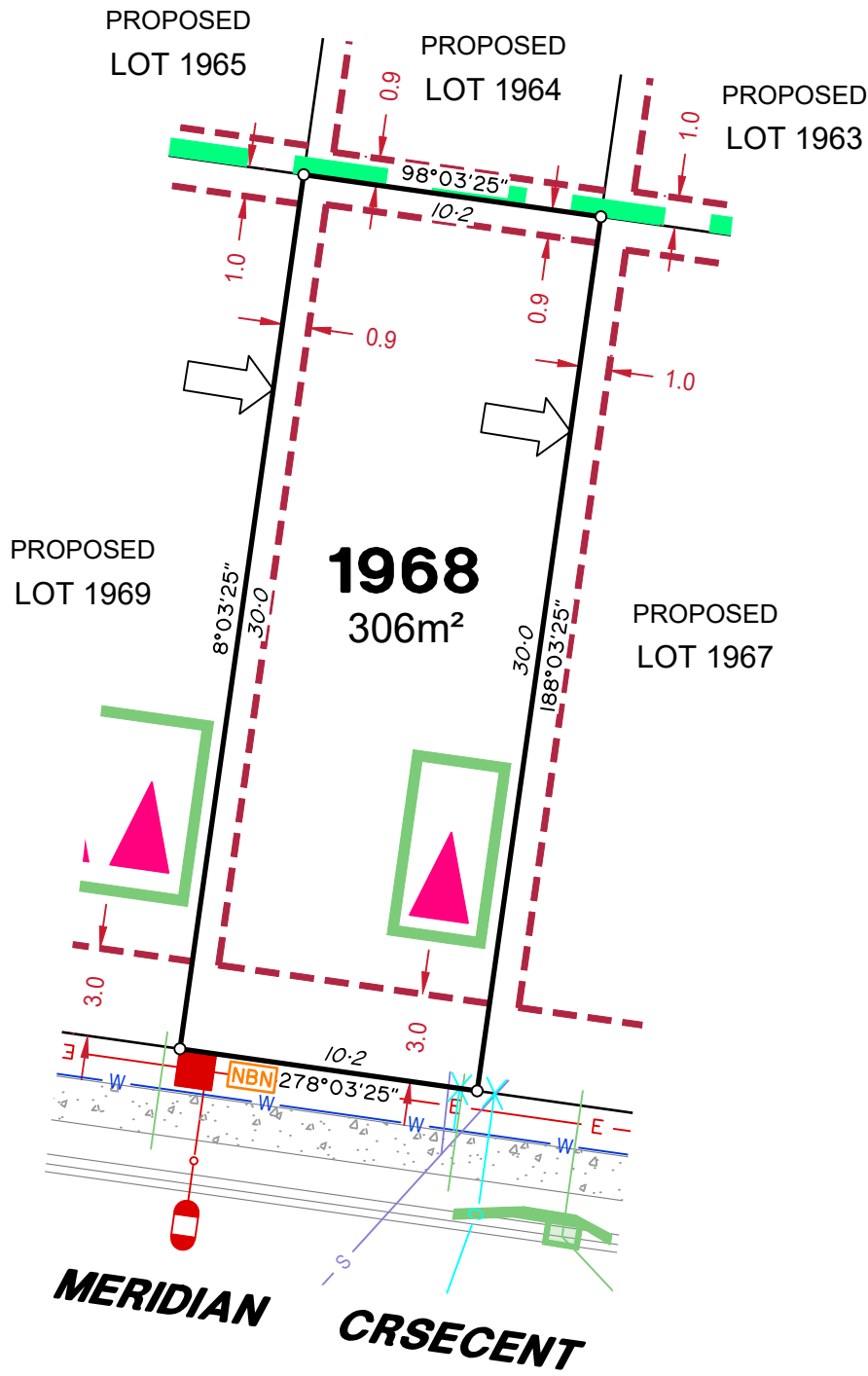
Compaction of any fill material placed on this site shall be completed to level one inspection and testing services in accordance with AS3798-2007.

Location of sewer, roofwater, stormwater, water reticulation and electricity lines, manholes and pits are those shown on engineering design drawings, supplied by Colliers and may differ from the as-constructed location.

Plan of Development information Supplied by RPS Group PLC.

Copyright © Veris Australia Pty Ltd  
**October 2025**

Plot Date: 22 Oct, 2025  
 Computer File Ref: 30109-St4L-SP-(D).dwg



# LEGEND

- Rock Retaining Wall shown as:-
- Sleeper Retaining Wall shown as:-
- Landscape Retaining Wall shown as:-
- Sewer line
- Sewer Manhole
- Roofwater Drainage line and Catch Pit
- Stormwater Drainage Line
- Stormwater Manhole
- Stormwater Pit
- Water Main
- Water Conduit
- Water Service Point of Entry
- Underground Electricity, Street Light, Electricity Pillar & NBN
- Developer Fencing
- Concrete Pathway
- Landscape Street Tree
- Zero Setback Building Line
- Indicative Building Envelope
- Bin Pads
- Indicative Parking Access Location

## ADDITIONAL NOTES:

Allotments used as Multiple Residential Allotments in accordance with the approved Plan of Development may have a reduced primary road setback to 3.0metres as noted on the Plan of Development Table.

Compaction of any fill material placed on this site shall be completed to level one inspection and testing services in accordance with AS3798-2007.

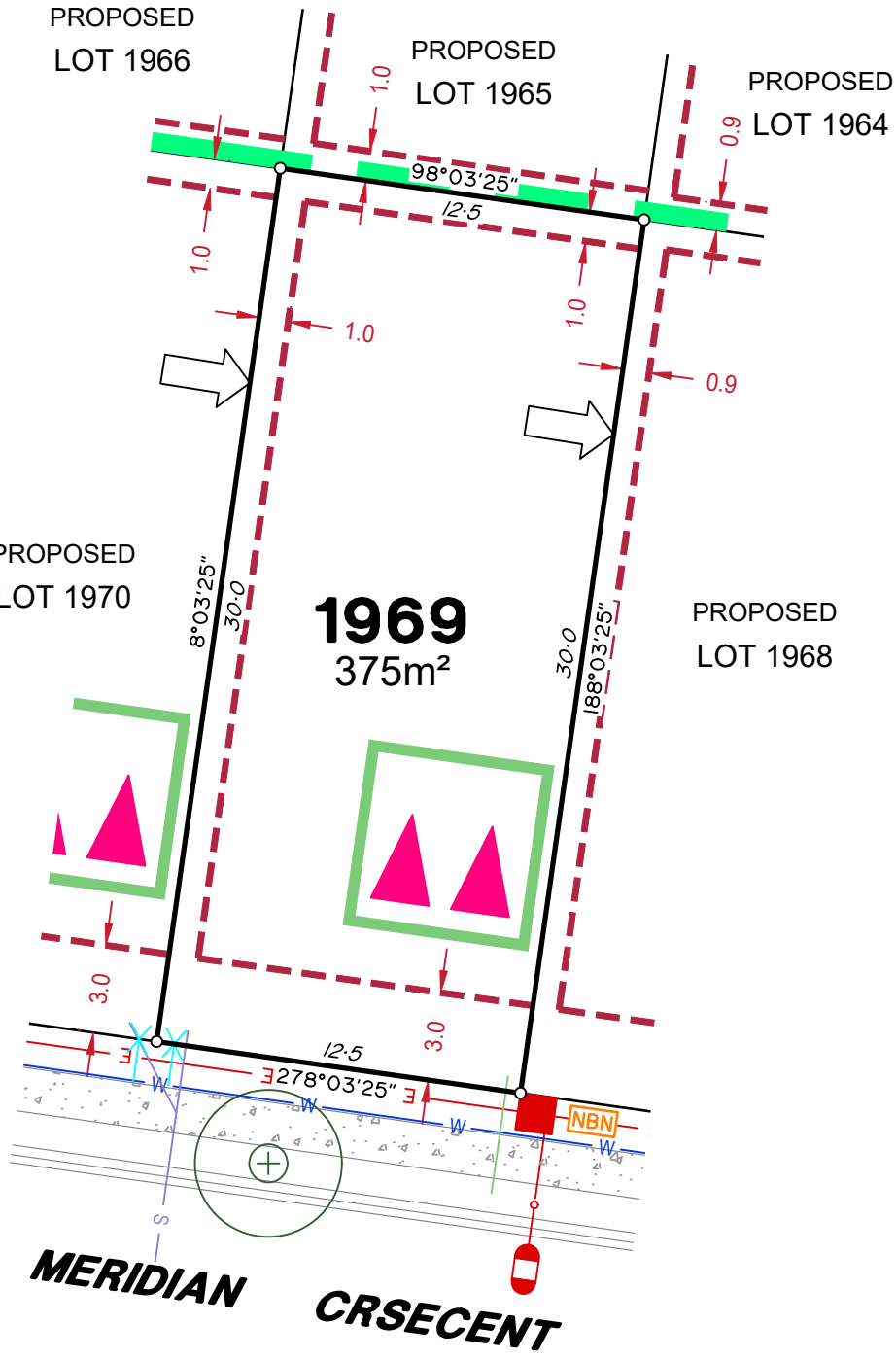
Location of sewer, roofwater, stormwater, water reticulation and electricity lines, manholes and pits are those shown on engineering design drawings, supplied by Colliers and may differ from the as-constructed location.

Plan of Development information Supplied by RPS Group PLC.

Copyright © Veris Australia Pty Ltd  
**October 2025**

Plot Date: 22 Oct, 2025  
 Computer File Ref: 30109-St4L-SP-(D).dwg

**MERIDIAN**  
**CRSECENT**



# LEGEND

- Rock Retaining Wall shown as:-
- Sleeper Retaining Wall shown as:-
- Landscape Retaining Wall shown as:-
- Sewer line
- Sewer Manhole
- Roofwater Drainage line and Catch Pit
- Stormwater Drainage Line
- Stormwater Manhole
- Stormwater Pit
- Water Main
- Water Conduit
- Water Service Point of Entry
- Underground Electricity, Street Light, Electricity Pillar & NBN
- Developer Fencing
- Concrete Pathway
- Zero Setback Building Line
- Landscape Street Tree
- Indicative Building Envelope
- Bin Pads
- Indicative Parking Access Location

## ADDITIONAL NOTES:

Allotments used as Multiple Residential Allotments in accordance with the approved Plan of Development may have a reduced primary road setback to 3.0metres as noted on the Plan of Development Table.

Compaction of any fill material placed on this site shall be completed to level one inspection and testing services in accordance with AS3798-2007.

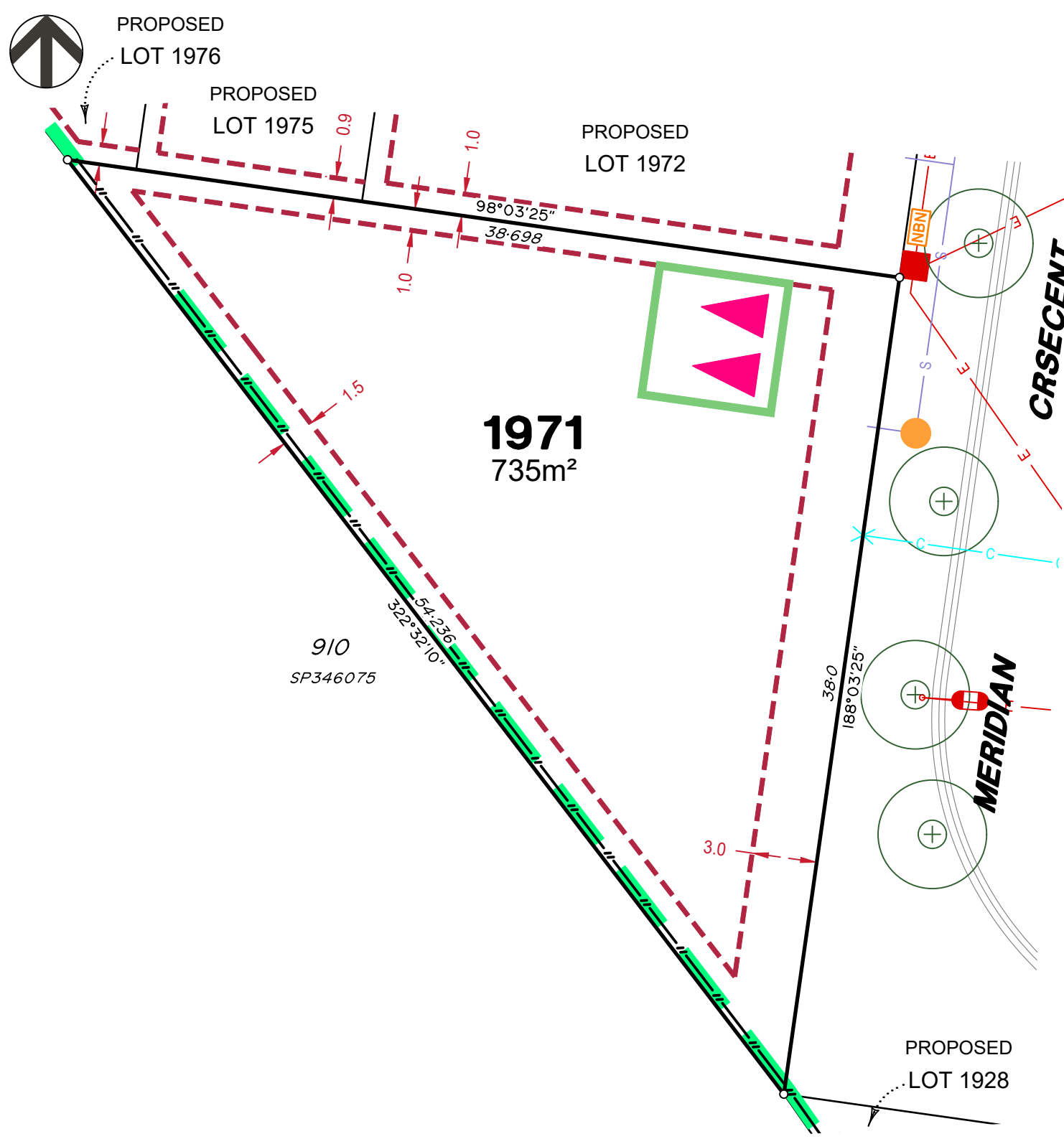
Location of sewer, roofwater, stormwater, water reticulation and electricity lines, manholes and pits are those shown on engineering design drawings, supplied by Colliers and may differ from the as-constructed location.

Plan of Development information Supplied by RPS Group PLC.

Copyright © Veris Australia Pty Ltd  
October 2025

Plot Date: 22 Oct, 2025  
Computer File Ref: 30109-St4L-SP-(D).dwg





## LEGEND

- Rock Retaining Wall shown as:-
- Sleeper Retaining Wall shown as:-
- Landscape Retaining Wall shown as:-
- Sewer line
- Sewer Manhole
- Roofwater Drainage line and Catch Pit
- Stormwater Drainage Line
- Stormwater Manhole
- Stormwater Pit
- Water Main
- Water Conduit
- Water Service Point of Entry
- Underground Electricity, Street Light, Electricity Pillar & NBN
- Developer Fencing
- Concrete Pathway
- Zero Setback Building Line
- Landscape Street Tree
- Indicative Building Envelope
- Bin Pads
- Indicative Parking Access Location

### ADDITIONAL NOTES:

Allotments used as Multiple Residential Allotments in accordance with the approved Plan of Development may have a reduced primary road setback to 3.0metres as noted on the Plan of Development Table.

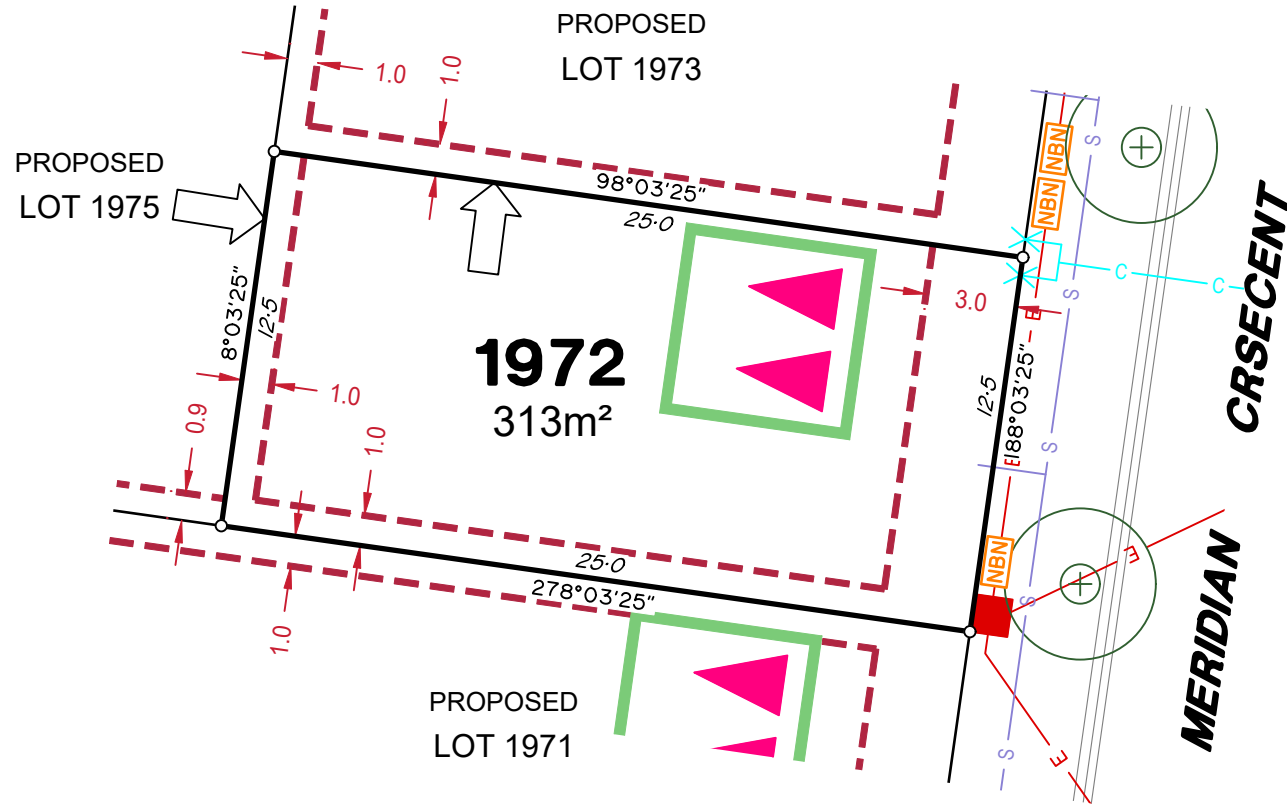
Compaction of any fill material placed on this site shall be completed to level one inspection and testing services in accordance with AS3798-2007.

Location of sewer, roofwater, stormwater, water reticulation and electricity lines, manholes and pits are those shown on engineering design drawings, supplied by Colliers and may differ from the as-constructed location.

Plan of Development information Supplied by RPS Group PLC.

Copyright © Veris Australia Pty Ltd  
**October 2025**

Plot Date: 22 Oct, 2025  
 Computer File Ref: 30109-St4L-SP-(D).dwg



### LEGEND

Rock Retaining Wall shown as:-	
Sleeper Retaining Wall shown as:-	
Landscape Retaining Wall shown as:-	
Sewer line	
Sewer Manhole	
Roofwater Drainage line and Catch Pit	
Stormwater Drainage Line	
Stormwater Manhole	
Stormwater Pit	
Water Main	
Water Conduit	
Water Service Point of Entry	
Underground Electricity, Street Light, Electricity Pillar & NBN	
Developer Fencing	
Concrete Pathway	
Zero Setback Building Line	
Landscape Street Tree	
Indicative Building Envelope	
Bin Pads	
Indicative Parking Access Location	

### ADDITIONAL NOTES:

Allotments used as Multiple Residential Allotments in accordance with the approved Plan of Development may have a reduced primary road setback to 3.0metres as noted on the Plan of Development Table.

Compaction of any fill material placed on this site shall be completed to level one inspection and testing services in accordance with AS3798-2007.

Location of sewer, roofwater, stormwater, water reticulation and electricity lines, manholes and pits are those shown on engineering design drawings, supplied by Colliers and may differ from the as-constructed location.

Plan of Development information Supplied by RPS Group PLC.

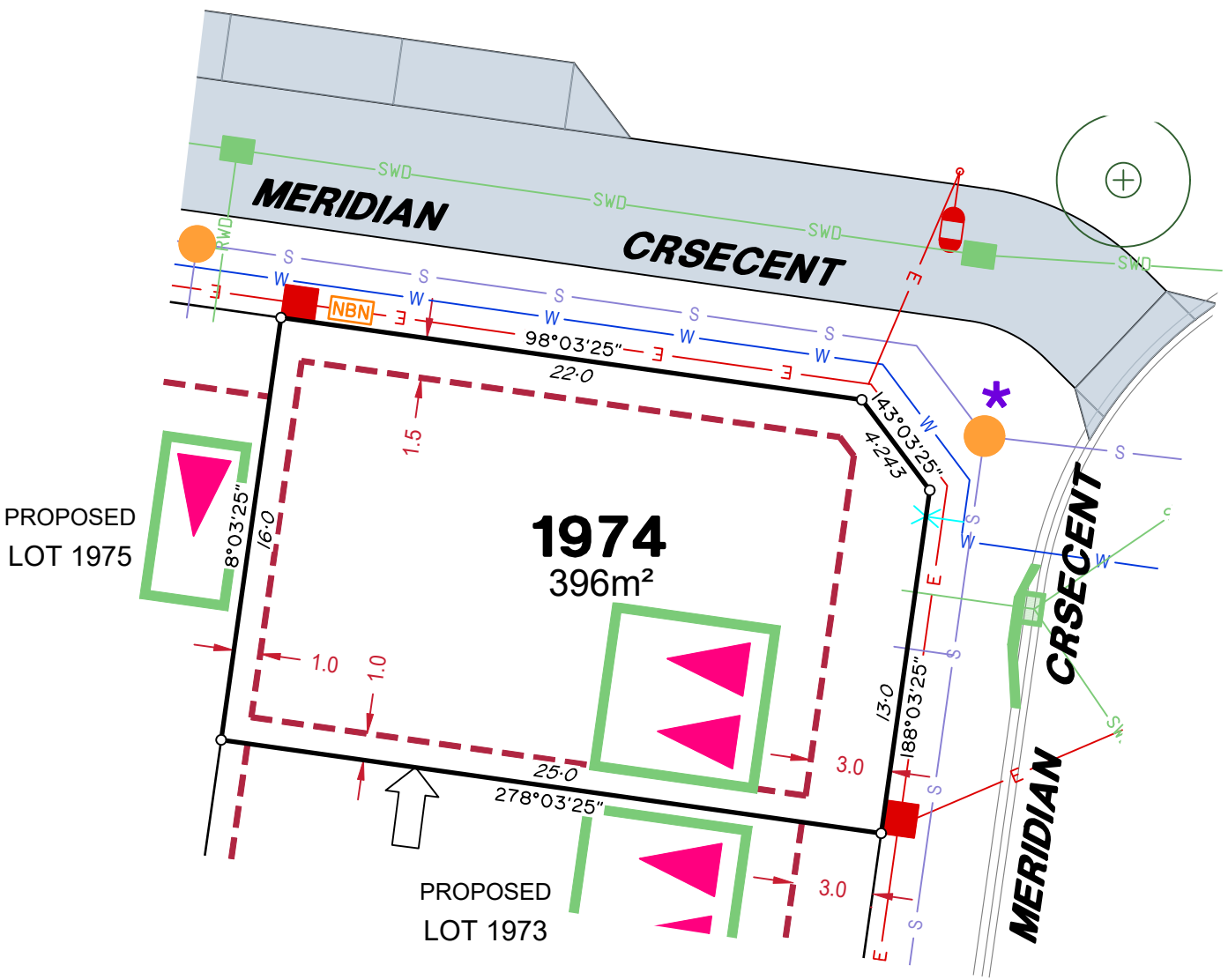
Copyright © Veris Australia Pty Ltd  
**October 2025**

Plot Date: 22 Oct, 2025  
 Computer File Ref: 30109-St4L-SP-(D).dwg



# LEGEND

- Rock Retaining Wall shown as:-
- Sleeper Retaining Wall shown as:-
- Landscape Retaining Wall shown as:-
- Sewer line
- Sewer Manhole
- Roofwater Drainage line and Catch Pit
- Stormwater Drainage Line
- Stormwater Manhole
- Stormwater Pit
- Water Main
- Water Conduit
- Water Service Point of Entry
- Underground Electricity, Street Light, Electricity Pillar & NBN
- Developer Fencing
- Concrete Pathway
- Landscape Street Tree
- Zero Setback Building Line
- Indicative Building Envelope
- Bin Pads
- Indicative Parking Access Location



## ADDITIONAL NOTES:

Allotments used as Multiple Residential Allotments in accordance with the approved Plan of Development may have a reduced primary road setback to 3.0metres as noted on the Plan of Development Table.

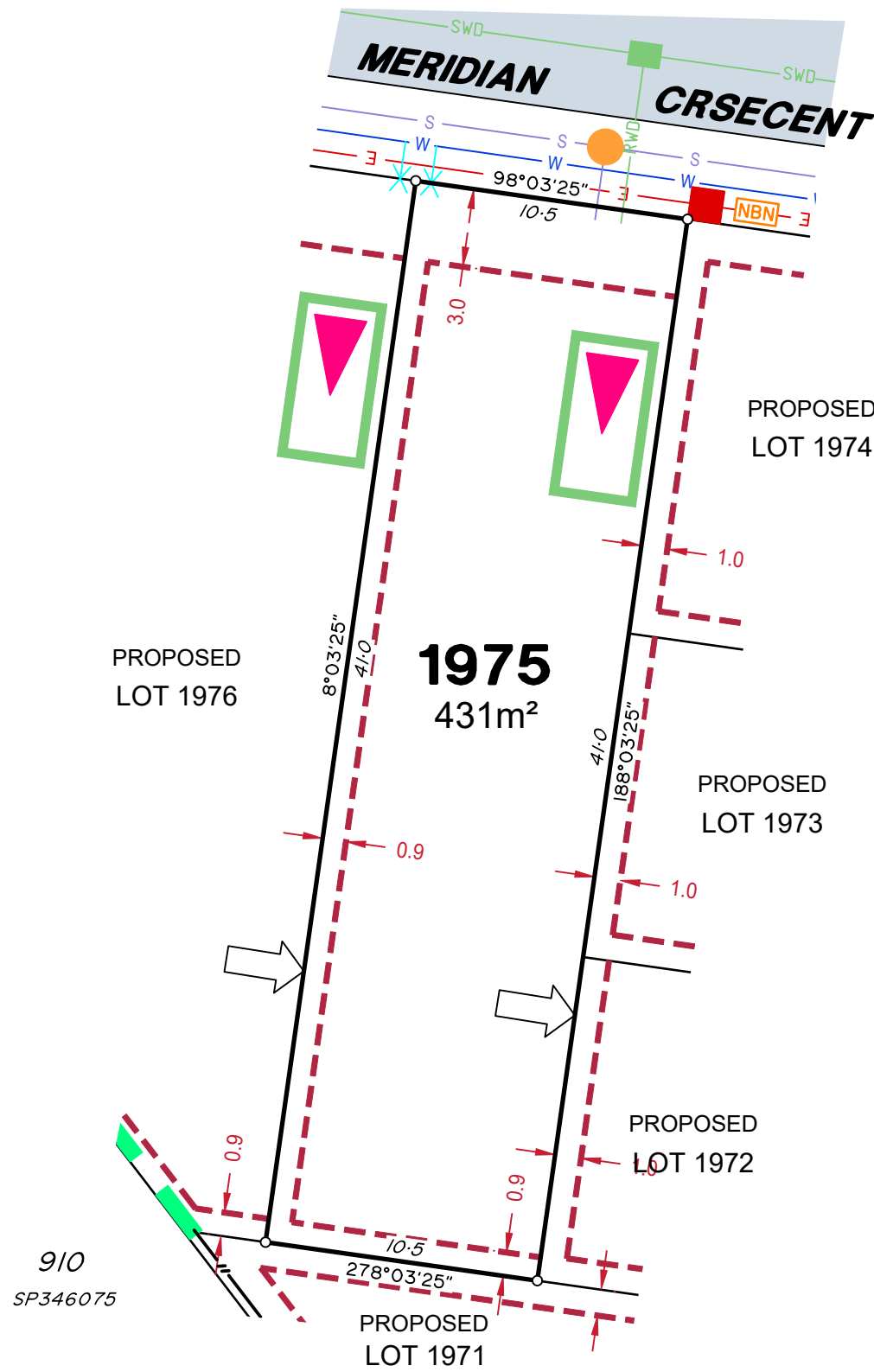
Compaction of any fill material placed on this site shall be completed to level one inspection and testing services in accordance with AS3798-2007.

Location of sewer, roofwater, stormwater, water reticulation and electricity lines, manholes and pits are those shown on engineering design drawings, supplied by Colliers and may differ from the as-constructed location.

Plan of Development information Supplied by RPS Group PLC.

Copyright © Veris Australia Pty Ltd  
**October 2025**

Plot Date: 22 Oct, 2025  
 Computer File Ref: 30109-S4L-SP-(D).dwg



### LEGEND

- Rock Retaining Wall shown as:-
- Sleeper Retaining Wall shown as:-
- Landscape Retaining Wall shown as:-
- Sewer line
- Sewer Manhole
- Roofwater Drainage line and Catch Pit
- Stormwater Drainage Line
- Stormwater Manhole
- Stormwater Pit
- Water Main
- Water Conduit
- Water Service Point of Entry
- Underground Electricity, Street Light, Electricity Pillar & NBN
- Developer Fencing
- Concrete Pathway
- Zero Setback Building Line
- Landscape Street Tree
- Indicative Building Envelope
- Bin Pads
- Indicative Parking Access Location

### ADDITIONAL NOTES:

Allotments used as Multiple Residential Allotments in accordance with the approved Plan of Development may have a reduced primary road setback to 3.0metres as noted on the Plan of Development Table.

Compaction of any fill material placed on this site shall be completed to level one inspection and testing services in accordance with AS3798-2007.

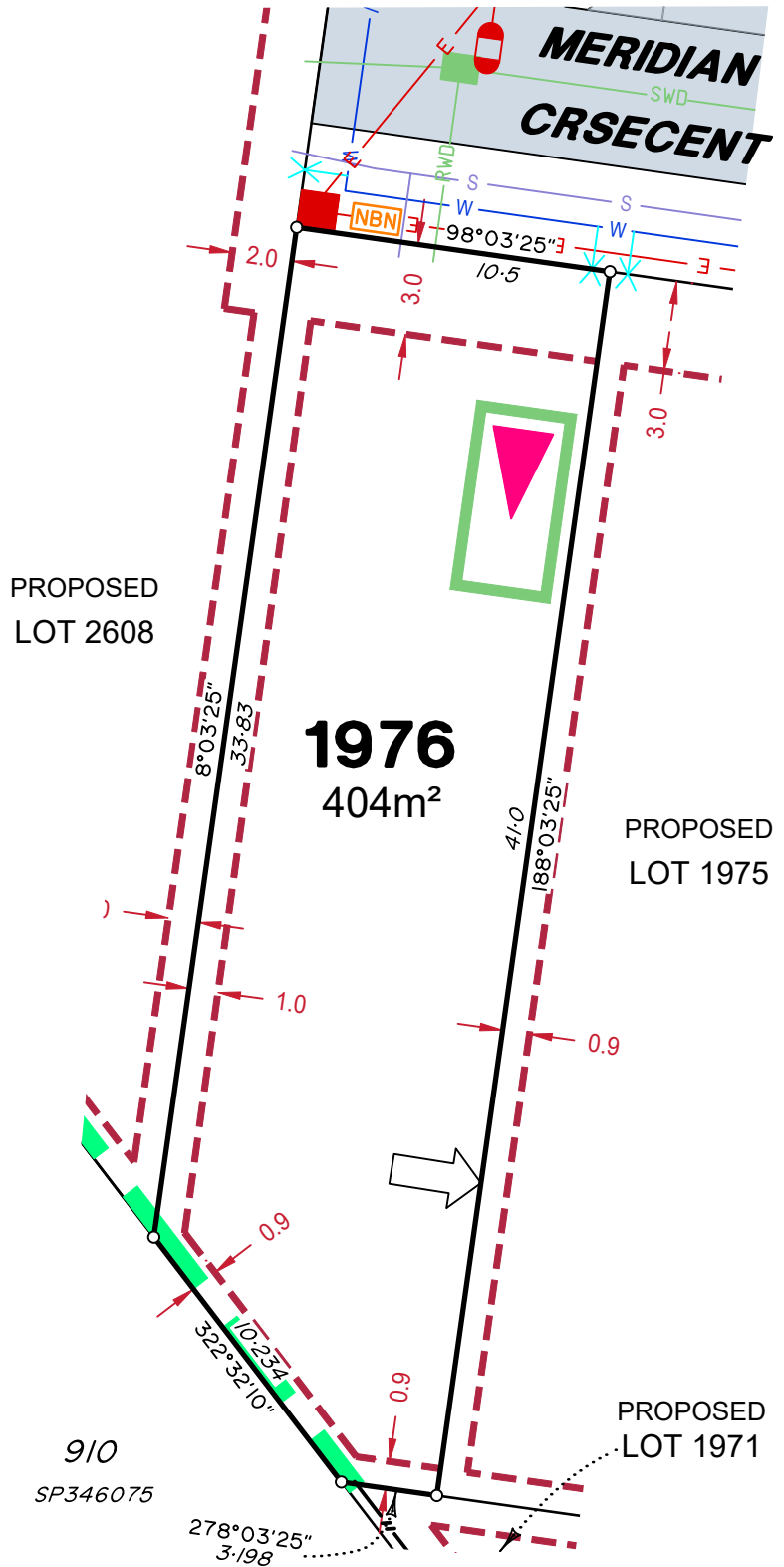
Location of sewer, roofwater, stormwater, water reticulation and electricity lines, manholes and pits are those shown on engineering design drawings, supplied by Colliers and may differ from the as-constructed location.

Plan of Development information Supplied by RPS Group PLC.

Copyright © Veris Australia Pty Ltd  
**October 2025**

Plot Date: 22 Oct, 2025  
 Computer File Ref: 30109-St4L-SP-(D).dwg

910  
 SP346075



### LEGEND

- Rock Retaining Wall shown as:-
- Sleeper Retaining Wall shown as:-
- Landscape Retaining Wall shown as:-
- Sewer line
- Sewer Manhole
- Roofwater Drainage line and Catch Pit
- Stormwater Drainage Line
- Stormwater Manhole
- Stormwater Pit
- Water Main
- Water Conduit
- Water Service Point of Entry
- Underground Electricity, Street Light, Electricity Pillar & NBN
- Developer Fencing
- Concrete Pathway
- Zero Setback Building Line
- Landscape Street Tree
- Indicative Building Envelope
- Bin Pads
- Indicative Parking Access Location

### ADDITIONAL NOTES:

Allotments used as Multiple Residential Allotments in accordance with the approved Plan of Development may have a reduced primary road setback to 3.0metres as noted on the Plan of Development Table.

Compaction of any fill material placed on this site shall be completed to level one inspection and testing services in accordance with AS3798-2007.

Location of sewer, roofwater, stormwater, water reticulation and electricity lines, manholes and pits are those shown on engineering design drawings, supplied by Colliers and may differ from the as-constructed location.

Plan of Development information Supplied by RPS Group PLC.

Copyright © Veris Australia Pty Ltd  
**November 2025**

Plot Date: 28 Nov, 2025  
 Computer File Ref: 30109-St4L-SP-(D).dwg



### LEGEND

- Rock Retaining Wall shown as:-
- Sleeper Retaining Wall shown as:-
- Landscape Retaining Wall shown as:-
- Sewer line
- Sewer Manhole
- Roofwater Drainage line and Catch Pit
- Stormwater Drainage Line
- Stormwater Manhole
- Stormwater Pit

- Water Main
- Water Conduit
- Water Service Point of Entry
- Underground Electricity, Street Light, Electricity Pillar & NBN
- Developer Fencing
- Concrete Pathway
- Zero Setback Building Line
- Indicative Building Envelope
- Bin Pads
- Indicative Parking Access Location
- Landscape Street Tree

PARADISE ROAD

PROPOSED LOT 1954

PROPOSED LOT 1953

PROPOSED LOT 1952

PROPOSED LOT 1951

**2580**  
877m<sup>2</sup>

PROPOSED LOT 1949

#### ADDITIONAL NOTES:

Allotments used as Multiple Residential Allotments in accordance with the approved Plan of Development may have a reduced primary road setback to 3.0metres as noted on the Plan of Development Table.

Compaction of any fill material placed on this site shall be completed to level one inspection and testing services in accordance with AS3798-2007.

Location of sewer, roofwater, stormwater, water reticulation and electricity lines, manholes and pits are those shown on engineering design drawings, supplied by Colliers and may differ from the as-constructed location.

Plan of Development information Supplied by RPS Group PLC.

Copyright © Veris Australia Pty Ltd  
**October 2025**

Plot Date: 22 Oct, 2025  
Computer File Ref: 30109-St4L-SP-(D).dwg

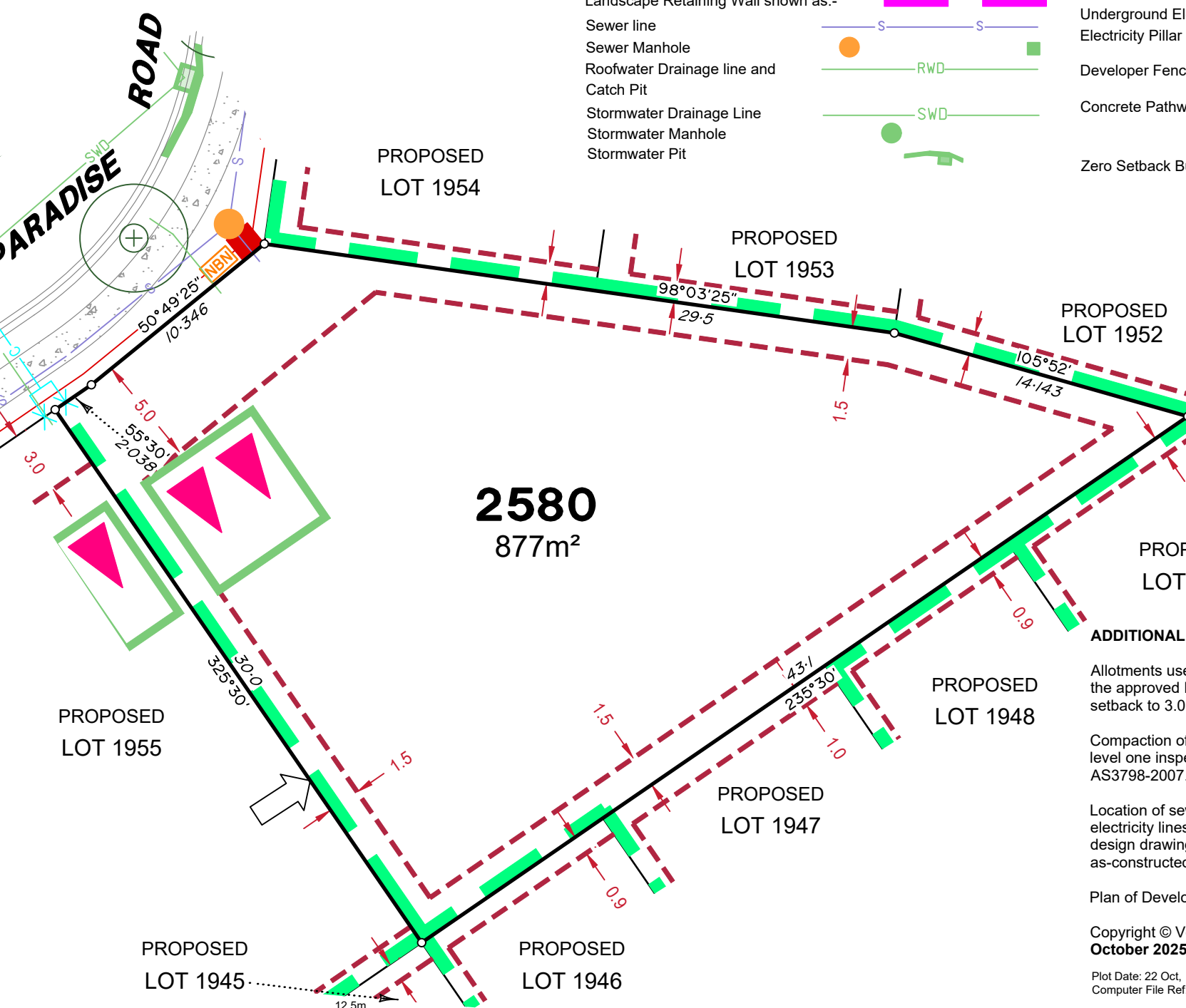
PROPOSED LOT 1955

PROPOSED LOT 1948

PROPOSED LOT 1947

PROPOSED LOT 1945

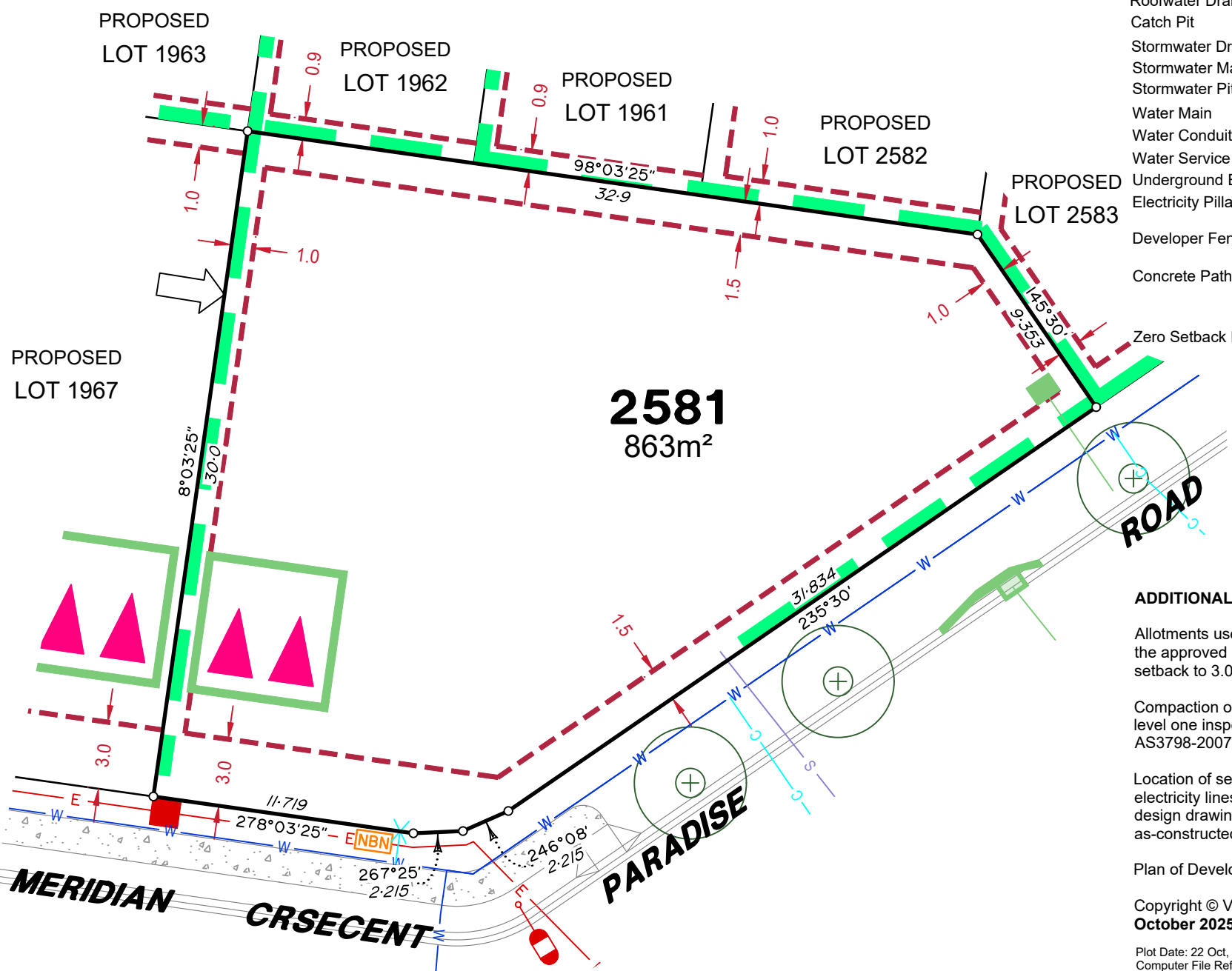
PROPOSED LOT 1946





# LEGEND

- Rock Retaining Wall shown as:-
- Sleeper Retaining Wall shown as:-
- Landscape Retaining Wall shown as:-
- Sewer line
- Sewer Manhole
- Roofwater Drainage line and Catch Pit
- Stormwater Drainage Line
- Stormwater Manhole
- Stormwater Pit
- Water Main
- Water Conduit
- Water Service Point of Entry
- Underground Electricity, Street Light, Electricity Pillar & NBN
- Developer Fencing
- Concrete Pathway
- Zero Setback Building Line
- Landscape Street Tree
- Indicative Building Envelope
- Bin Pads
- Indicative Parking Access Location



## ADDITIONAL NOTES:

Allotments used as Multiple Residential Allotments in accordance with the approved Plan of Development may have a reduced primary road setback to 3.0metres as noted on the Plan of Development Table.

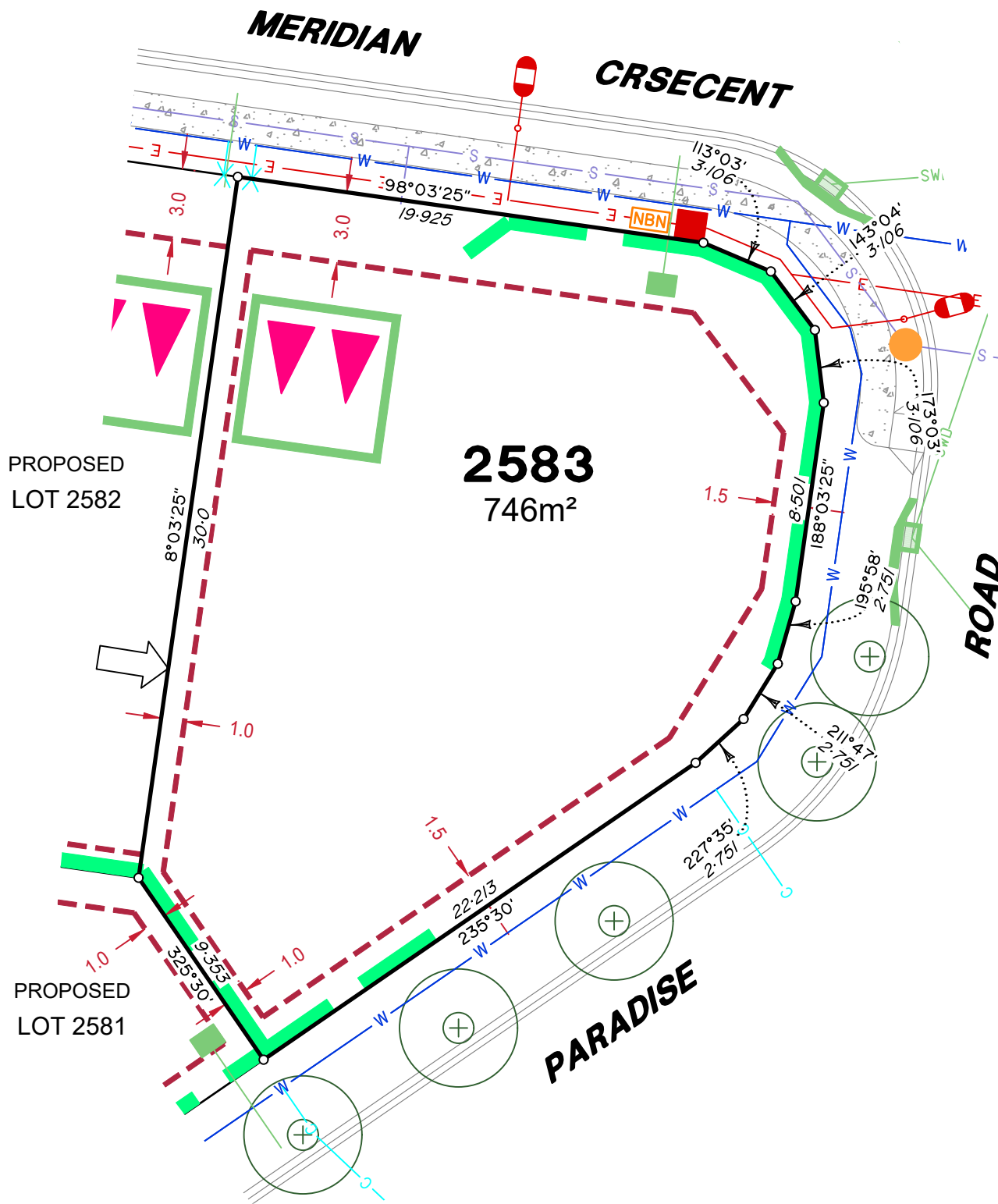
Compaction of any fill material placed on this site shall be completed to level one inspection and testing services in accordance with AS3798-2007.

Location of sewer, roofwater, stormwater, water reticulation and electricity lines, manholes and pits are those shown on engineering design drawings, supplied by Colliers and may differ from the as-constructed location.

Plan of Development information Supplied by RPS Group PLC.

Copyright © Veris Australia Pty Ltd  
**October 2025**

Plot Date: 22 Oct, 2025  
 Computer File Ref: 30109-St4L-SP-(D).dwg



## LEGEND

Rock Retaining Wall shown as:-	
Sleeper Retaining Wall shown as:-	
Landscape Retaining Wall shown as:-	
Sewer line	
Sewer Manhole	
Roofwater Drainage line and Catch Pit	
Stormwater Drainage Line	
Stormwater Manhole	
Stormwater Pit	
Water Main	
Water Conduit	
Water Service Point of Entry	
Underground Electricity, Street Light, Electricity Pillar & NBN	
Developer Fencing	
Concrete Pathway	
Zero Setback Building Line	
Landscape Street Tree	
Indicative Building Envelope	
Bin Pads	
Indicative Parking Access Location	

### ADDITIONAL NOTES:

Allotments used as Multiple Residential Allotments in accordance with the approved Plan of Development may have a reduced primary road setback to 3.0metres as noted on the Plan of Development Table.

Compaction of any fill material placed on this site shall be completed to level one inspection and testing services in accordance with AS3798-2007.

Location of sewer, roofwater, stormwater, water reticulation and electricity lines, manholes and pits are those shown on engineering design drawings, supplied by Colliers and may differ from the as-constructed location.

Plan of Development information Supplied by RPS Group PLC.

Copyright © Veris Australia Pty Ltd  
October 2025

Plot Date: 22 Oct, 2025  
Computer File Ref: 30109-St4L-SP-(D).dwg

