

LEGEND

Rock Retaining Wall shown as:-	
Sleeper Retaining Wall shown as:-	
Landscape Retaining Wall shown as:-	
Sewer line	
Sewer Manhole	
Roofwater Drainage line and Catch Pit	
Stormwater Drainage Line	
Stormwater Manhole	
Stormwater Pit	
Water Main	
Water Conduit	
Water Service Point of Entry	
Underground Electricity, Street Light, Electricity Pillar & NBN	
Developer Fencing	
Concrete Pathway	
Landscape Street Tree	
Zero Setback Building Line	
Indicative Building Envelope	
Bin Pads	
Indicative Parking Access Location	

ADDITIONAL NOTES:

Allotments used as Multiple Residential Allotments in accordance with the approved Plan of Development may have a reduced primary road setback to 3.0metres as noted on the Plan of Development Table.

Compaction of any fill material placed on this site shall be completed to level one inspection and testing services in accordance with AS3798-2007.

Location of sewer, roofwater, stormwater, water reticulation and electricity lines, manholes and pits are those shown on engineering design drawings, supplied by Peak Urban and may differ from the as-constructed location.

Plan of Development information Supplied by Colliers.

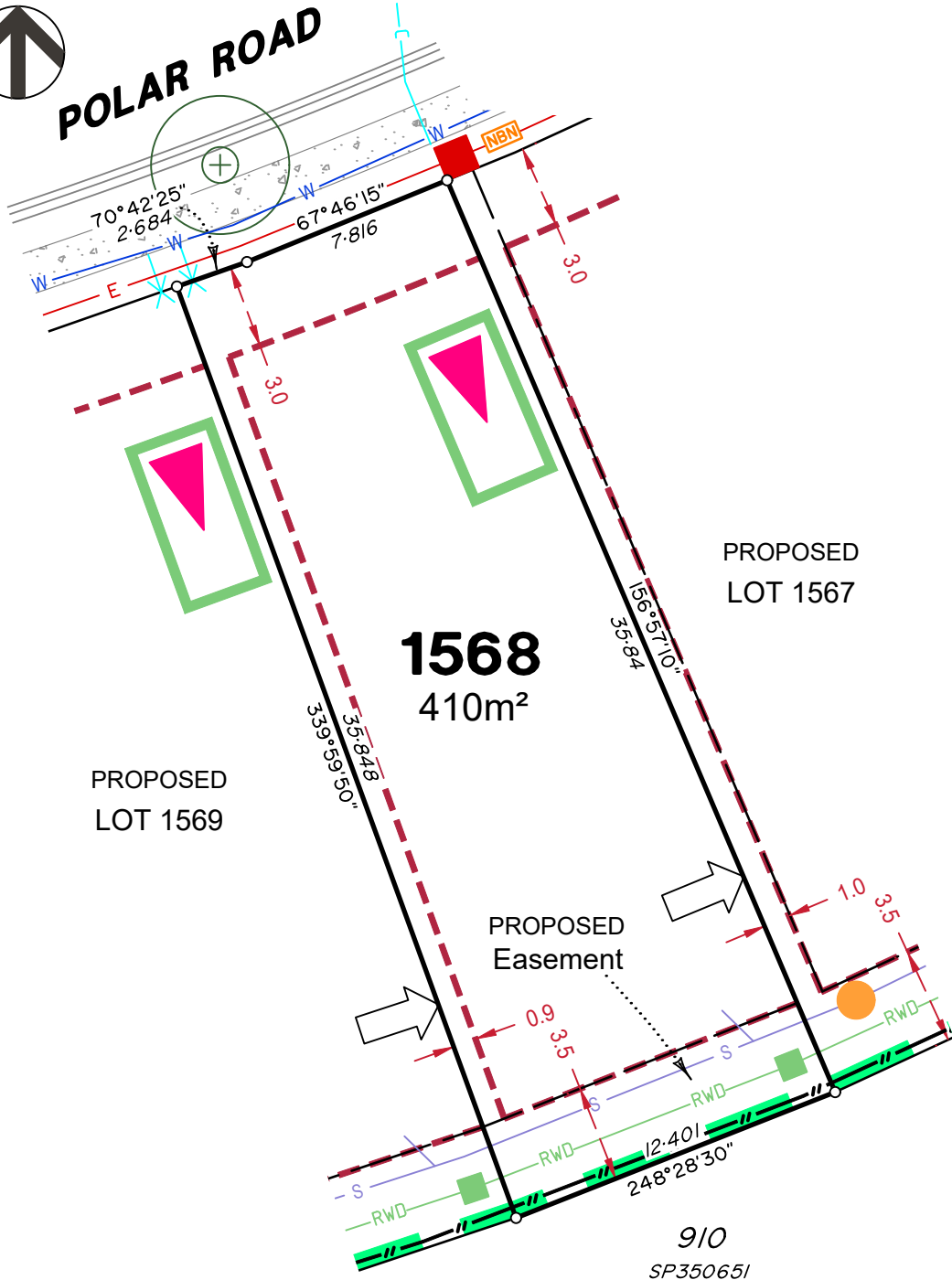
Copyright © Veris Australia Pty Ltd
August 2025

Plot Date: 19 Aug, 2025
 Computer File Ref: 30109-St4G-SP-(D).dwg

910
 SP350651



POLAR ROAD



LEGEND

Rock Retaining Wall shown as:-	
Sleeper Retaining Wall shown as:-	
Landscape Retaining Wall shown as:-	
Sewer line	
Sewer Manhole	
Roofwater Drainage line and Catch Pit	
Stormwater Drainage Line	
Stormwater Manhole	
Stormwater Pit	
Water Main	
Water Conduit	
Water Service Point of Entry	
Underground Electricity, Street Light, Electricity Pillar & NBN	
Developer Fencing	
Concrete Pathway	
Landscape Street Tree	
Zero Setback Building Line	
Indicative Building Envelope	
Bin Pads	
Indicative Parking Access Location	

ADDITIONAL NOTES:

Allotments used as Multiple Residential Allotments in accordance with the approved Plan of Development may have a reduced primary road setback to 3.0metres as noted on the Plan of Development Table.

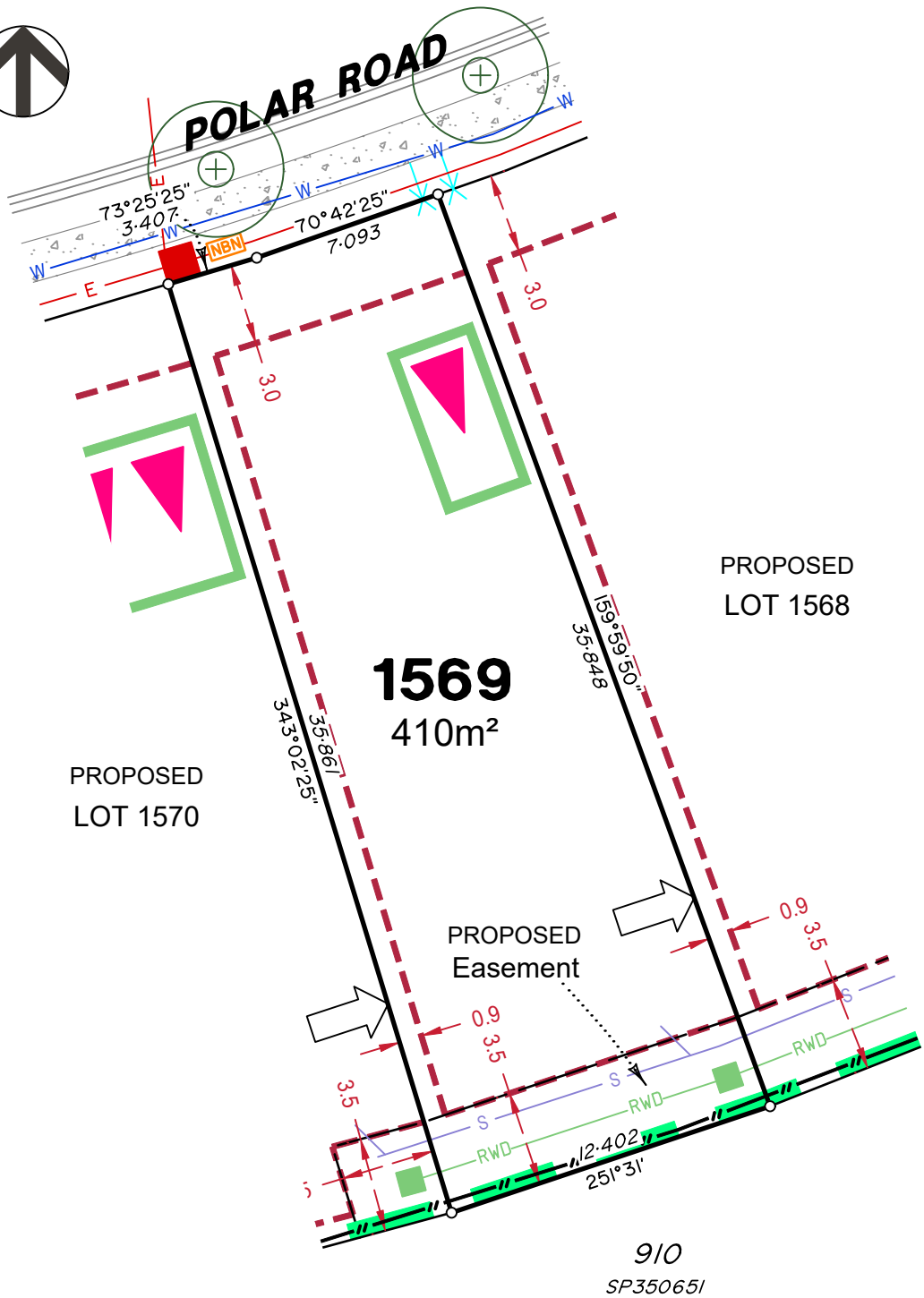
Compaction of any fill material placed on this site shall be completed to level one inspection and testing services in accordance with AS3798-2007.

Location of sewer, roofwater, stormwater, water reticulation and electricity lines, manholes and pits are those shown on engineering design drawings, supplied by Peak Urban and may differ from the as-constructed location.

Plan of Development information Supplied by Colliers.

Copyright © Veris Australia Pty Ltd
August 2025

Plot Date: 19 Aug, 2025
Computer File Ref: 30109-St4G-SP-(D).dwg



LEGEND

Rock Retaining Wall shown as:-	
Sleeper Retaining Wall shown as:-	
Landscape Retaining Wall shown as:-	
Sewer line	
Sewer Manhole	
Roofwater Drainage line and Catch Pit	
Stormwater Drainage Line	
Stormwater Manhole	
Stormwater Pit	
Water Main	
Water Conduit	
Water Service Point of Entry	
Underground Electricity, Street Light, Electricity Pillar & NBN	
Developer Fencing	
Concrete Pathway	
Landscape Street Tree	
Zero Setback Building Line	
Indicative Building Envelope	
Bin Pads	
Indicative Parking Access Location	

ADDITIONAL NOTES:

Allotments used as Multiple Residential Allotments in accordance with the approved Plan of Development may have a reduced primary road setback to 3.0metres as noted on the Plan of Development Table.

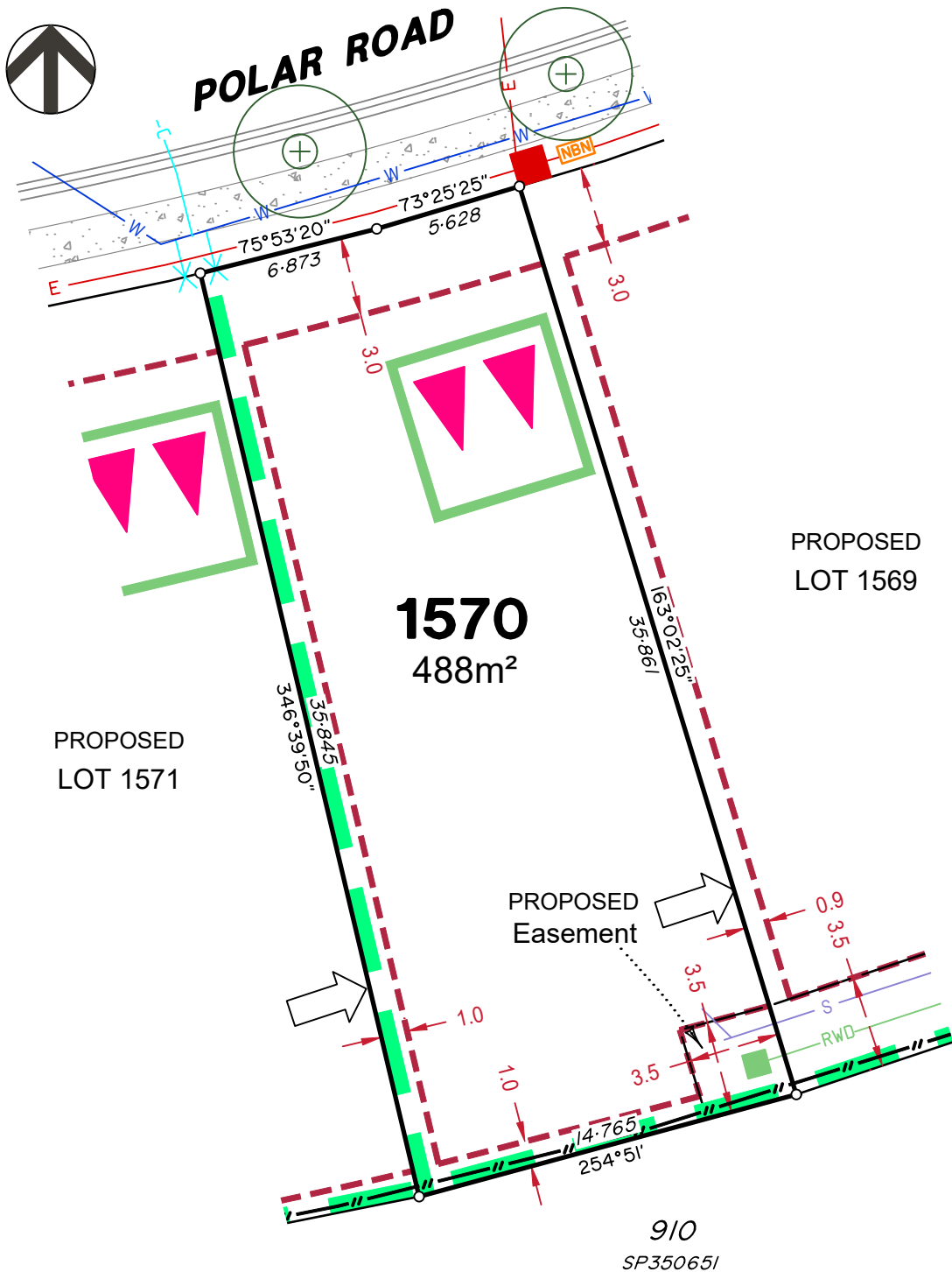
Compaction of any fill material placed on this site shall be completed to level one inspection and testing services in accordance with AS3798-2007.

Location of sewer, roofwater, stormwater, water reticulation and electricity lines, manholes and pits are those shown on engineering design drawings, supplied by Peak Urban and may differ from the as-constructed location.

Plan of Development information Supplied by Colliers.

Copyright © Veris Australia Pty Ltd
August 2025

Plot Date: 19 Aug, 2025
Computer File Ref: 30109-St4G-SP-(D).dwg



LEGEND

Rock Retaining Wall shown as:-	
Sleeper Retaining Wall shown as:-	
Landscape Retaining Wall shown as:-	
Sewer line	
Sewer Manhole	
Roofwater Drainage line and Catch Pit	
Stormwater Drainage Line	
Stormwater Manhole	
Stormwater Pit	
Water Main	
Water Conduit	
Water Service Point of Entry	
Underground Electricity, Street Light, Electricity Pillar & NBN	
Developer Fencing	
Concrete Pathway	
Zero Setback Building Line	
Indicative Building Envelope	
Bin Pads	
Indicative Parking Access Location	
Landscape Street Tree	

ADDITIONAL NOTES:

Allotments used as Multiple Residential Allotments in accordance with the approved Plan of Development may have a reduced primary road setback to 3.0metres as noted on the Plan of Development Table.

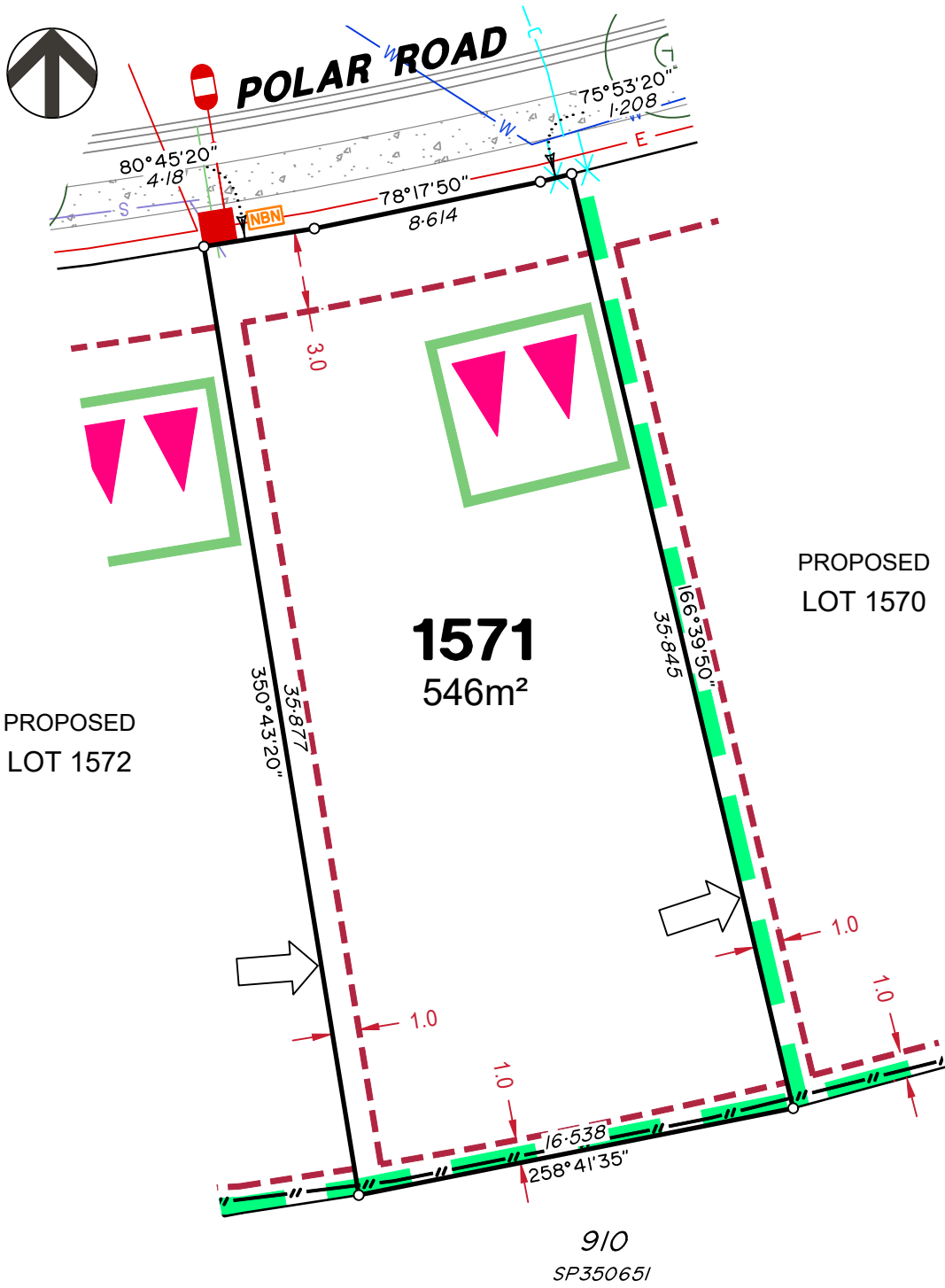
Compaction of any fill material placed on this site shall be completed to level one inspection and testing services in accordance with AS3798-2007.

Location of sewer, roofwater, stormwater, water reticulation and electricity lines, manholes and pits are those shown on engineering design drawings, supplied by Peak Urban and may differ from the as-constructed location.

Plan of Development information Supplied by Colliers.

Copyright © Veris Australia Pty Ltd
August 2025

Plot Date: 19 Aug, 2025
Computer File Ref: 30109-St4G-SP-(D).dwg



LEGEND

- Rock Retaining Wall shown as:-
- Sleeper Retaining Wall shown as:-
- Landscape Retaining Wall shown as:-
- Sewer line
- Sewer Manhole
- Roofwater Drainage line and Catch Pit
- Stormwater Drainage Line
- Stormwater Manhole
- Stormwater Pit
- Water Main
- Water Conduit
- Water Service Point of Entry
- Underground Electricity, Street Light, Electricity Pillar & NBN
- Developer Fencing
- Concrete Pathway
- Landscape Street Tree
- Zero Setback Building Line
- Indicative Building Envelope
- Bin Pads
- Indicative Parking Access Location

ADDITIONAL NOTES:

Allotments used as Multiple Residential Allotments in accordance with the approved Plan of Development may have a reduced primary road setback to 3.0metres as noted on the Plan of Development Table.

Compaction of any fill material placed on this site shall be completed to level one inspection and testing services in accordance with AS3798-2007.

Location of sewer, roofwater, stormwater, water reticulation and electricity lines, manholes and pits are those shown on engineering design drawings, supplied by Peak Urban and may differ from the as-constructed location.

Plan of Development information Supplied by Colliers.

Copyright © Veris Australia Pty Ltd
August 2025

Plot Date: 19 Aug, 2025
 Computer File Ref: 30109-St4G-SP-(D).dwg

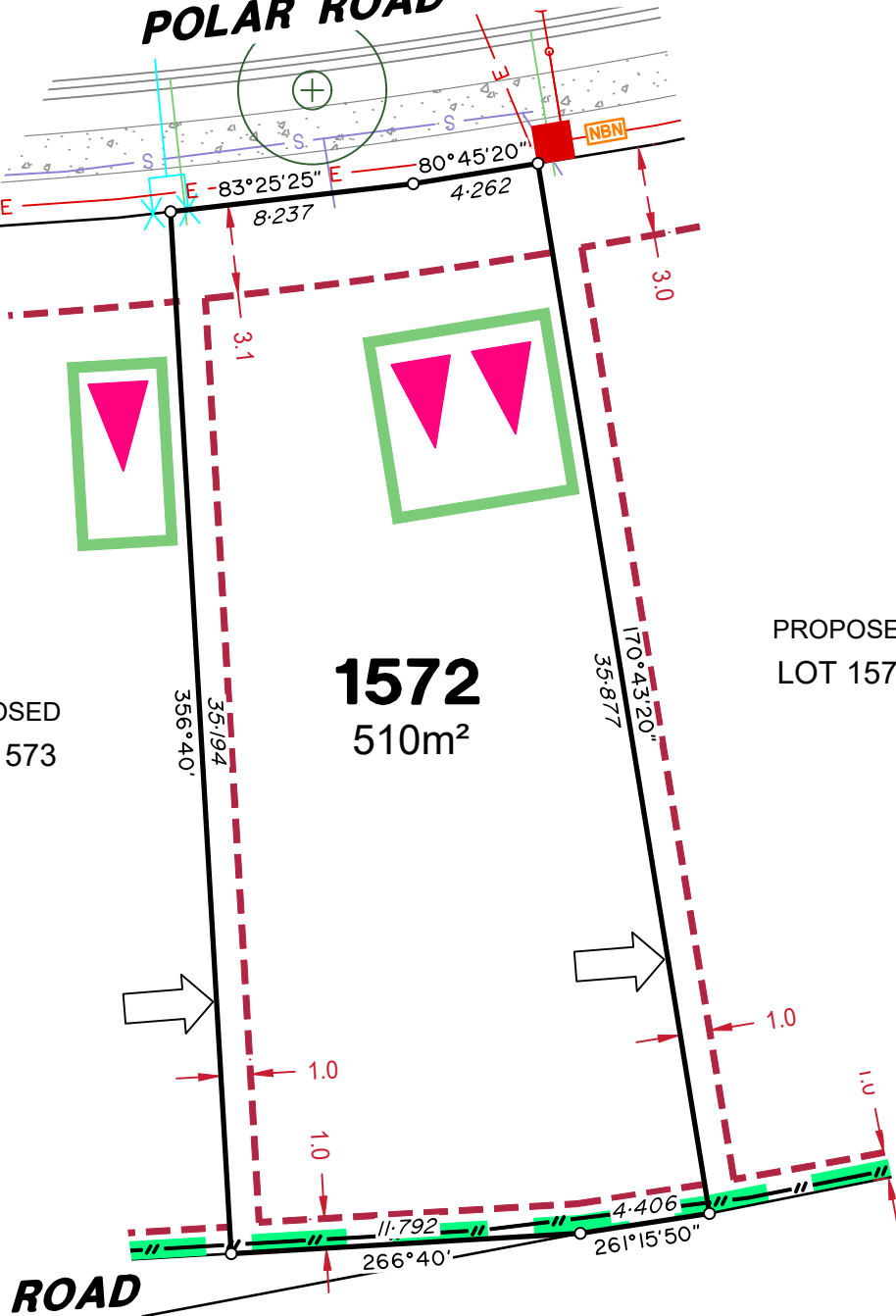


POLAR ROAD

PROPOSED LOT 1573

1572
510m²

PROPOSED LOT 1571



910
SP350651

LEGEND

Rock Retaining Wall shown as:-	
Sleeper Retaining Wall shown as:-	
Landscape Retaining Wall shown as:-	
Sewer line	
Sewer Manhole	
Roofwater Drainage line and Catch Pit	
Stormwater Drainage Line	
Stormwater Manhole	
Stormwater Pit	
Water Main	
Water Conduit	
Water Service Point of Entry	
Underground Electricity, Street Light, Electricity Pillar & NBN	
Developer Fencing	
Concrete Pathway	
Zero Setback Building Line	
Landscape Street Tree	
Indicative Building Envelope	
Bin Pads	
Indicative Parking Access Location	

ADDITIONAL NOTES:

Allotments used as Multiple Residential Allotments in accordance with the approved Plan of Development may have a reduced primary road setback to 3.0metres as noted on the Plan of Development Table.

Compaction of any fill material placed on this site shall be completed to level one inspection and testing services in accordance with AS3798-2007.

Location of sewer, roofwater, stormwater, water reticulation and electricity lines, manholes and pits are those shown on engineering design drawings, supplied by Peak Urban and may differ from the as-constructed location.

Plan of Development information Supplied by Colliers.

Copyright © Veris Australia Pty Ltd
August 2025

Plot Date: 19 Aug, 2025
Computer File Ref: 30109-S14G-SP-(D).dwg

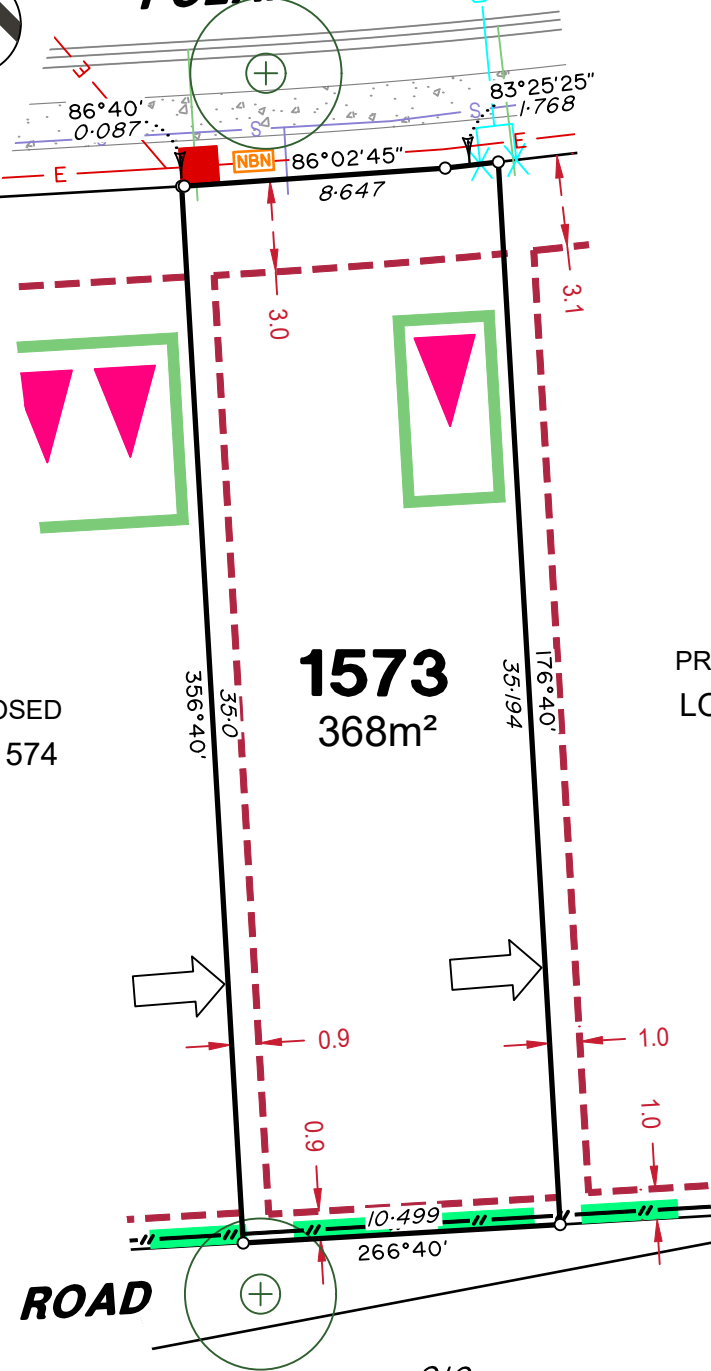


POLAR ROAD

PROPOSED LOT 1574

1573
368m²

PROPOSED LOT 1572



ROAD

910
SP350651

LEGEND

Rock Retaining Wall shown as:-	
Sleeper Retaining Wall shown as:-	
Landscape Retaining Wall shown as:-	
Sewer line	
Sewer Manhole	
Roofwater Drainage line and Catch Pit	
Stormwater Drainage Line	
Stormwater Manhole	
Stormwater Pit	
Water Main	
Water Conduit	
Water Service Point of Entry	
Underground Electricity, Street Light, Electricity Pillar & NBN	
Developer Fencing	
Concrete Pathway	
Landscape Street Tree	
Zero Setback Building Line	
Indicative Building Envelope	
Bin Pads	
Indicative Parking Access Location	

ADDITIONAL NOTES:

Allotments used as Multiple Residential Allotments in accordance with the approved Plan of Development may have a reduced primary road setback to 3.0metres as noted on the Plan of Development Table.

Compaction of any fill material placed on this site shall be completed to level one inspection and testing services in accordance with AS3798-2007.

Location of sewer, roofwater, stormwater, water reticulation and electricity lines, manholes and pits are those shown on engineering design drawings, supplied by Peak Urban and may differ from the as-constructed location.

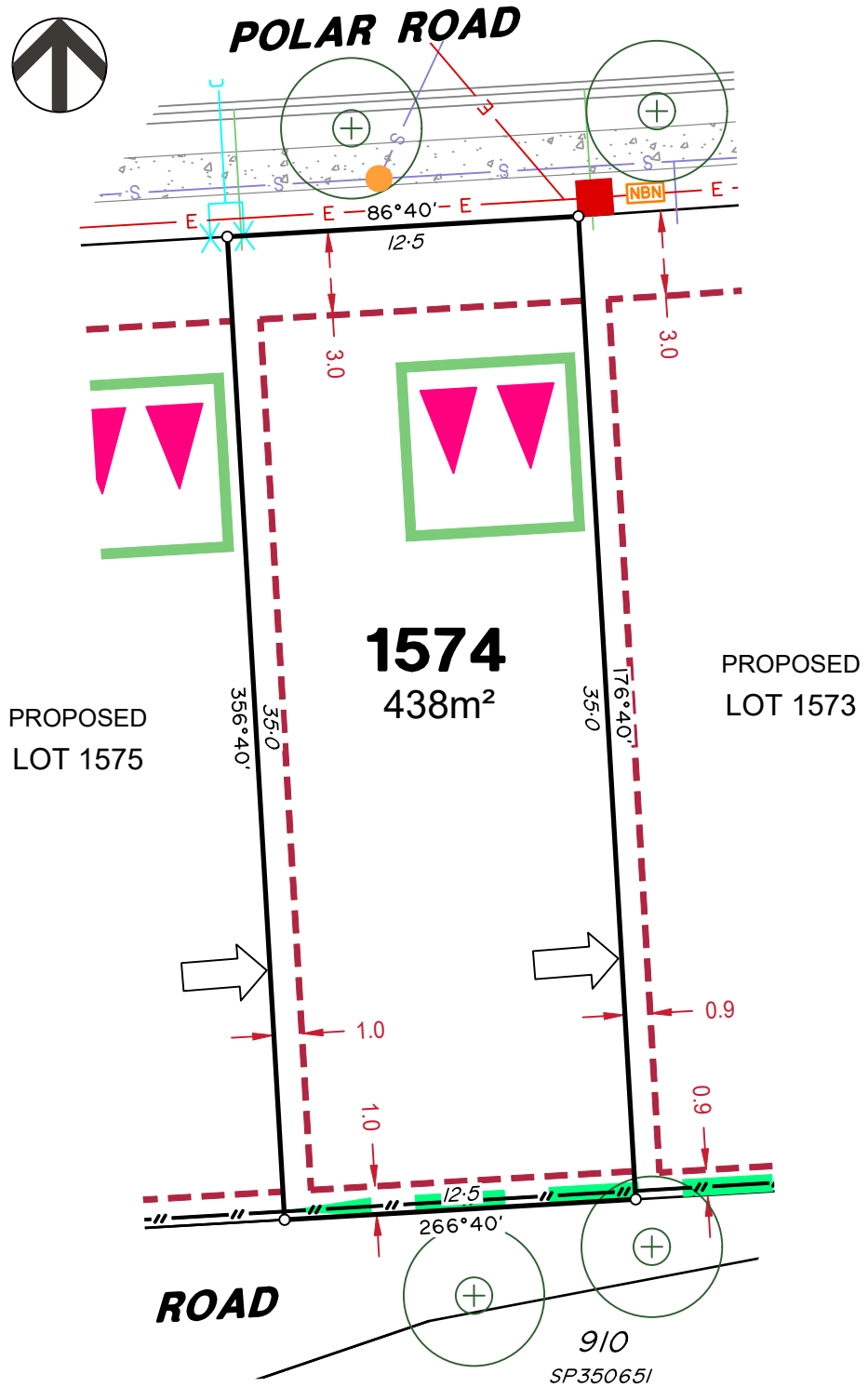
Plan of Development information Supplied by Colliers.

Copyright © Veris Australia Pty Ltd
August 2025

Plot Date: 19 Aug, 2025
Computer File Ref: 30109-St4G-SP-(D).dwg



POLAR ROAD



LEGEND

Rock Retaining Wall shown as:-	
Sleeper Retaining Wall shown as:-	
Landscape Retaining Wall shown as:-	
Sewer line	
Sewer Manhole	
Roofwater Drainage line and Catch Pit	
Stormwater Drainage Line	
Stormwater Manhole	
Stormwater Pit	
Water Main	
Water Conduit	
Water Service Point of Entry	
Underground Electricity, Street Light, Electricity Pillar & NBN	
Developer Fencing	
Concrete Pathway	
Zero Setback Building Line	
Landscape Street Tree	
Indicative Building Envelope	
Bin Pads	
Indicative Parking Access Location	

ADDITIONAL NOTES:

Allotments used as Multiple Residential Allotments in accordance with the approved Plan of Development may have a reduced primary road setback to 3.0metres as noted on the Plan of Development Table.

Compaction of any fill material placed on this site shall be completed to level one inspection and testing services in accordance with AS3798-2007.

Location of sewer, roofwater, stormwater, water reticulation and electricity lines, manholes and pits are those shown on engineering design drawings, supplied by Peak Urban and may differ from the as-constructed location.

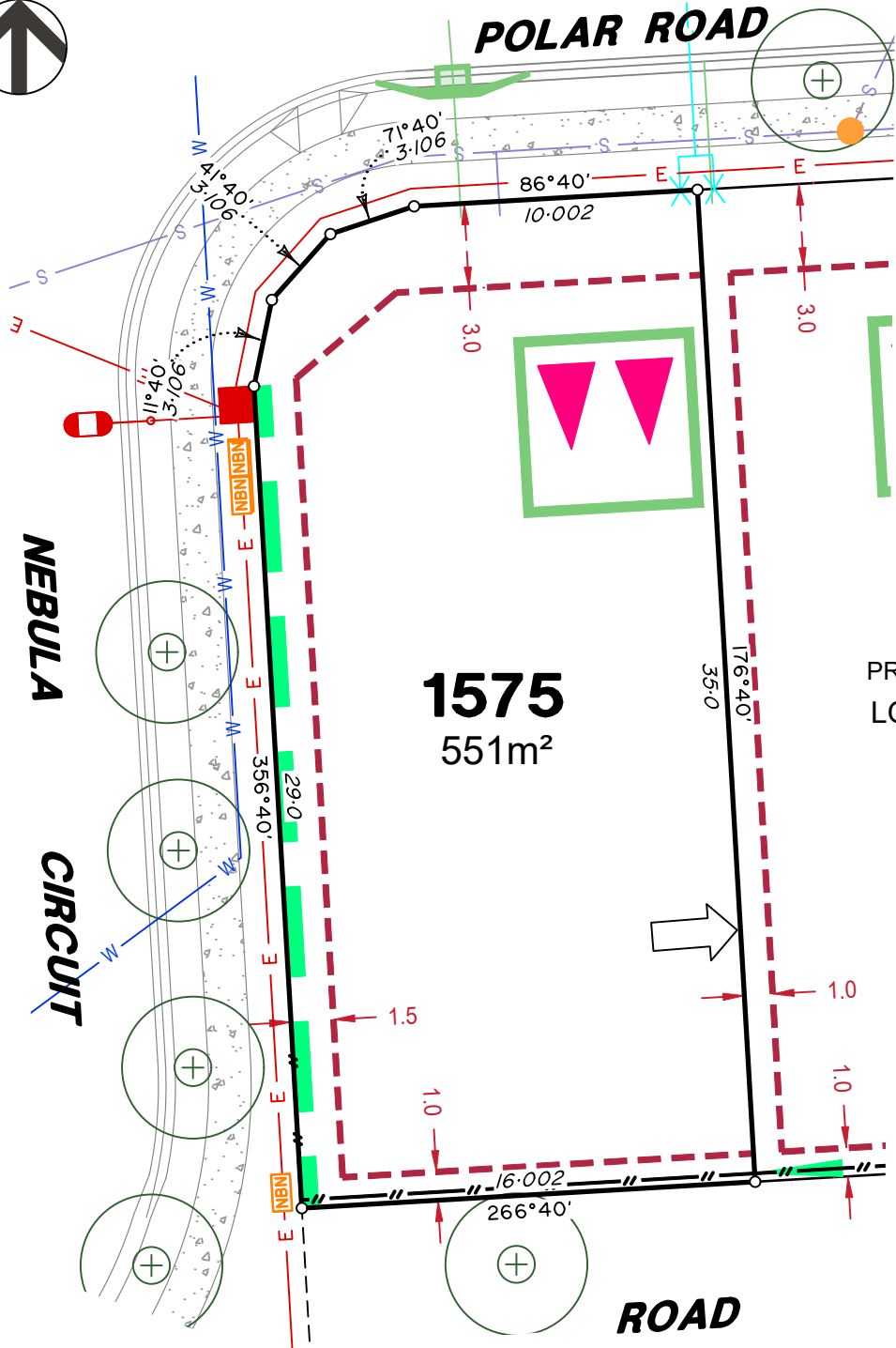
Plan of Development information Supplied by Colliers.

Copyright © Veris Australia Pty Ltd
August 2025

Plot Date: 22 Aug, 2025
Computer File Ref: 30109-St4G-SP-(D).dwg



POLAR ROAD



1575
551m²

PROPOSED
LOT 1574

ROAD

LEGEND

Rock Retaining Wall shown as:-	
Sleeper Retaining Wall shown as:-	
Landscape Retaining Wall shown as:-	
Sewer line	
Sewer Manhole	
Roofwater Drainage line and Catch Pit	
Stormwater Drainage Line	
Stormwater Manhole	
Stormwater Pit	
Water Main	
Water Conduit	
Water Service Point of Entry	
Underground Electricity, Street Light, Electricity Pillar & NBN	
Developer Fencing	
Concrete Pathway	
Zero Setback Building Line	
Landscape Street Tree	
Indicative Building Envelope	
Bin Pads	
Indicative Parking Access Location	

ADDITIONAL NOTES:

Allotments used as Multiple Residential Allotments in accordance with the approved Plan of Development may have a reduced primary road setback to 3.0metres as noted on the Plan of Development Table.

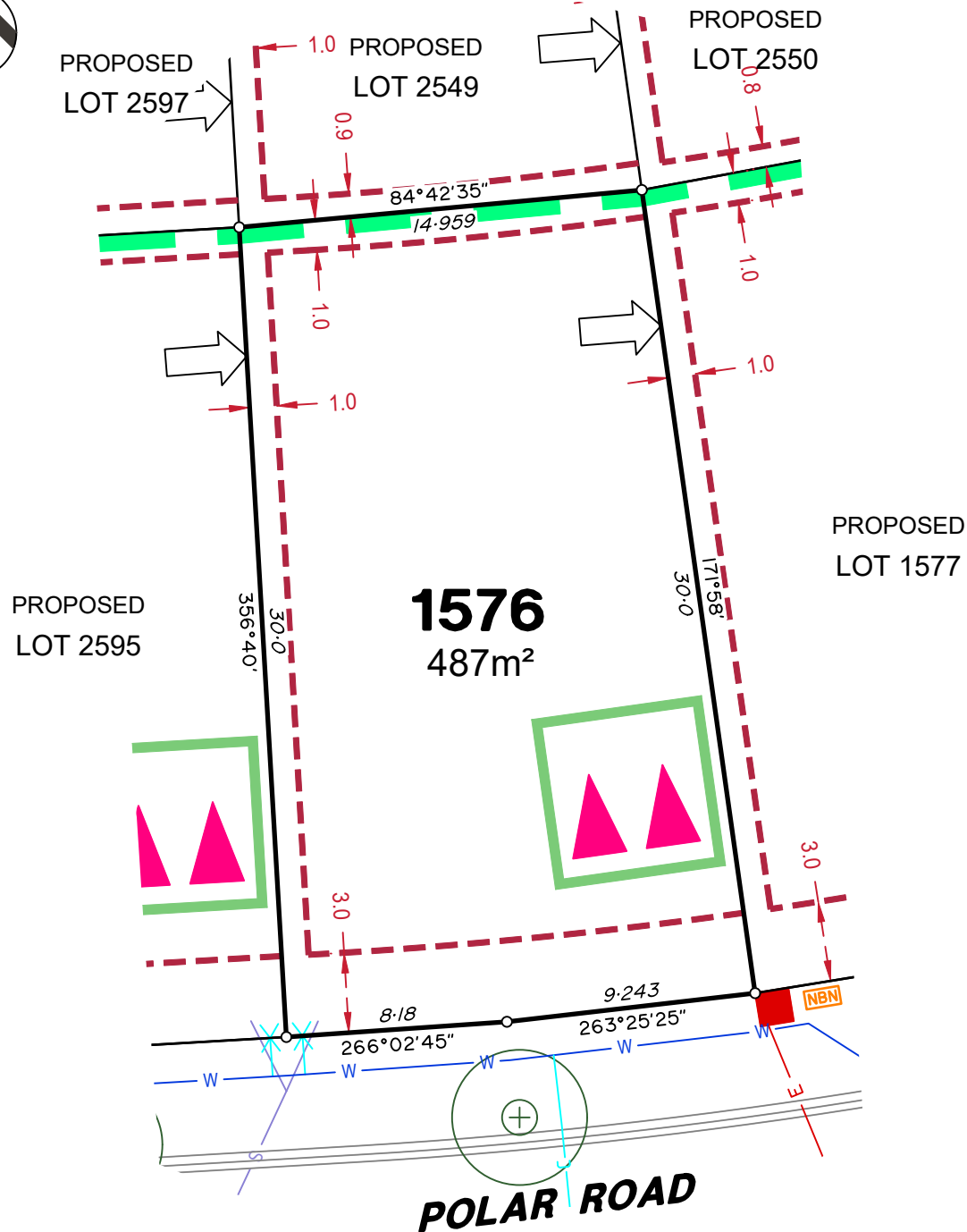
Compaction of any fill material placed on this site shall be completed to level one inspection and testing services in accordance with AS3798-2007.

Location of sewer, roofwater, stormwater, water reticulation and electricity lines, manholes and pits are those shown on engineering design drawings, supplied by Peak Urban and may differ from the as-constructed location.

Plan of Development information Supplied by Colliers.

Copyright © Veris Australia Pty Ltd
August 2025

Plot Date: 22 Aug, 2025
Computer File Ref: 30109-St4G-SP-(D).dwg



LEGEND

Rock Retaining Wall shown as:-	
Sleeper Retaining Wall shown as:-	
Landscape Retaining Wall shown as:-	
Sewer line	
Sewer Manhole	
Roofwater Drainage line and Catch Pit	
Stormwater Drainage Line	
Stormwater Manhole	
Stormwater Pit	
Water Main	
Water Conduit	
Water Service Point of Entry	
Underground Electricity, Street Light, Electricity Pillar & NBN	
Developer Fencing	
Concrete Pathway	
Landscape Street Tree	
Zero Setback Building Line	
Indicative Building Envelope	
Bin Pads	
Indicative Parking Access Location	

ADDITIONAL NOTES:

Allotments used as Multiple Residential Allotments in accordance with the approved Plan of Development may have a reduced primary road setback to 3.0metres as noted on the Plan of Development Table.

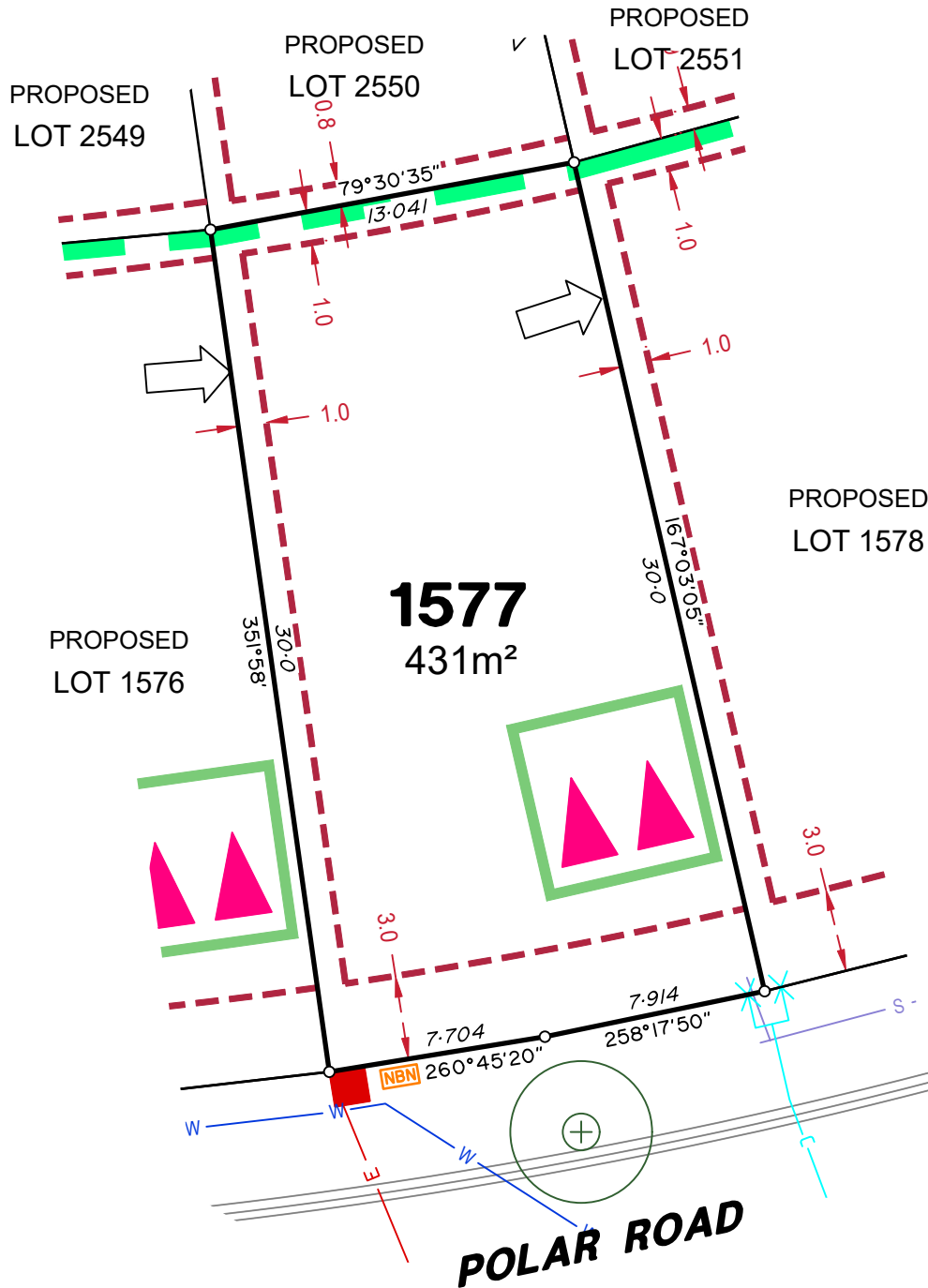
Compaction of any fill material placed on this site shall be completed to level one inspection and testing services in accordance with AS3798-2007.

Location of sewer, roofwater, stormwater, water reticulation and electricity lines, manholes and pits are those shown on engineering design drawings, supplied by Peak Urban and may differ from the as-constructed location.

Plan of Development information Supplied by Colliers.

Copyright © Veris Australia Pty Ltd
August 2025

Plot Date: 22 Aug, 2025
Computer File Ref: 30109-St4G-SP-(D).dwg



LEGEND

Rock Retaining Wall shown as:-	
Sleeper Retaining Wall shown as:-	
Landscape Retaining Wall shown as:-	
Sewer line	
Sewer Manhole	
Roofwater Drainage line and Catch Pit	
Stormwater Drainage Line	
Stormwater Manhole	
Stormwater Pit	
Water Main	
Water Conduit	
Water Service Point of Entry	
Underground Electricity, Street Light, Electricity Pillar & NBN	
Developer Fencing	
Concrete Pathway	
Landscape Street Tree	
Zero Setback Building Line	
Indicative Building Envelope	
Bin Pads	
Indicative Parking Access Location	

ADDITIONAL NOTES:

Allotments used as Multiple Residential Allotments in accordance with the approved Plan of Development may have a reduced primary road setback to 3.0metres as noted on the Plan of Development Table.

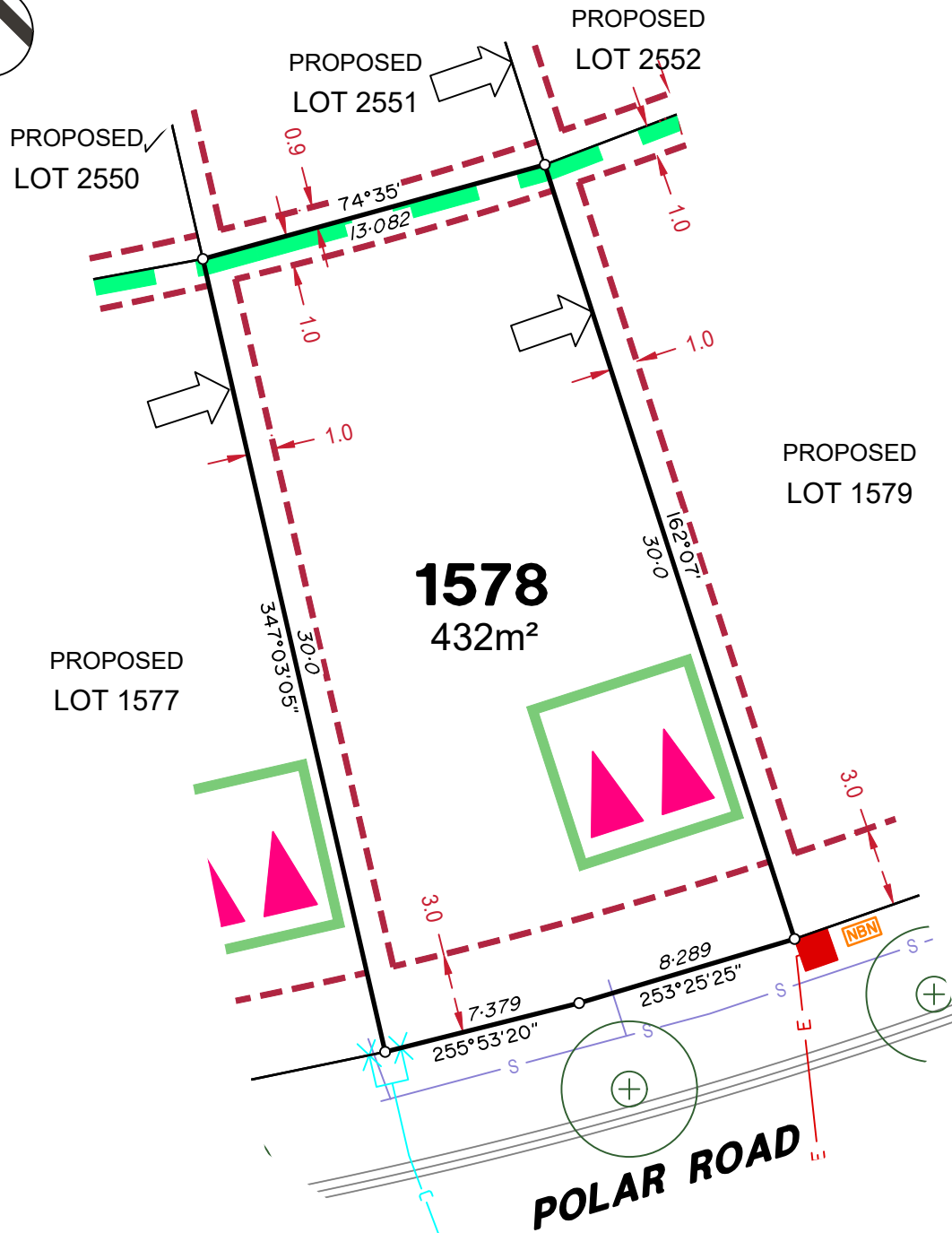
Compaction of any fill material placed on this site shall be completed to level one inspection and testing services in accordance with AS3798-2007.

Location of sewer, roofwater, stormwater, water reticulation and electricity lines, manholes and pits are those shown on engineering design drawings, supplied by Peak Urban and may differ from the as-constructed location.

Plan of Development information Supplied by Colliers.

Copyright © Veris Australia Pty Ltd
August 2025

Plot Date: 22 Aug, 2025
Computer File Ref: 30109-St4G-SP-(D).dwg



LEGEND

Rock Retaining Wall shown as:-	
Sleeper Retaining Wall shown as:-	
Landscape Retaining Wall shown as:-	
Sewer line	
Sewer Manhole	
Roofwater Drainage line and Catch Pit	
Stormwater Drainage Line	
Stormwater Manhole	
Stormwater Pit	
Water Main	
Water Conduit	
Water Service Point of Entry	
Underground Electricity, Street Light, Electricity Pillar & NBN	
Developer Fencing	
Concrete Pathway	
Landscape Street Tree	
Zero Setback Building Line	
Indicative Building Envelope	
Bin Pads	
Indicative Parking Access Location	

ADDITIONAL NOTES:

Allotments used as Multiple Residential Allotments in accordance with the approved Plan of Development may have a reduced primary road setback to 3.0metres as noted on the Plan of Development Table.

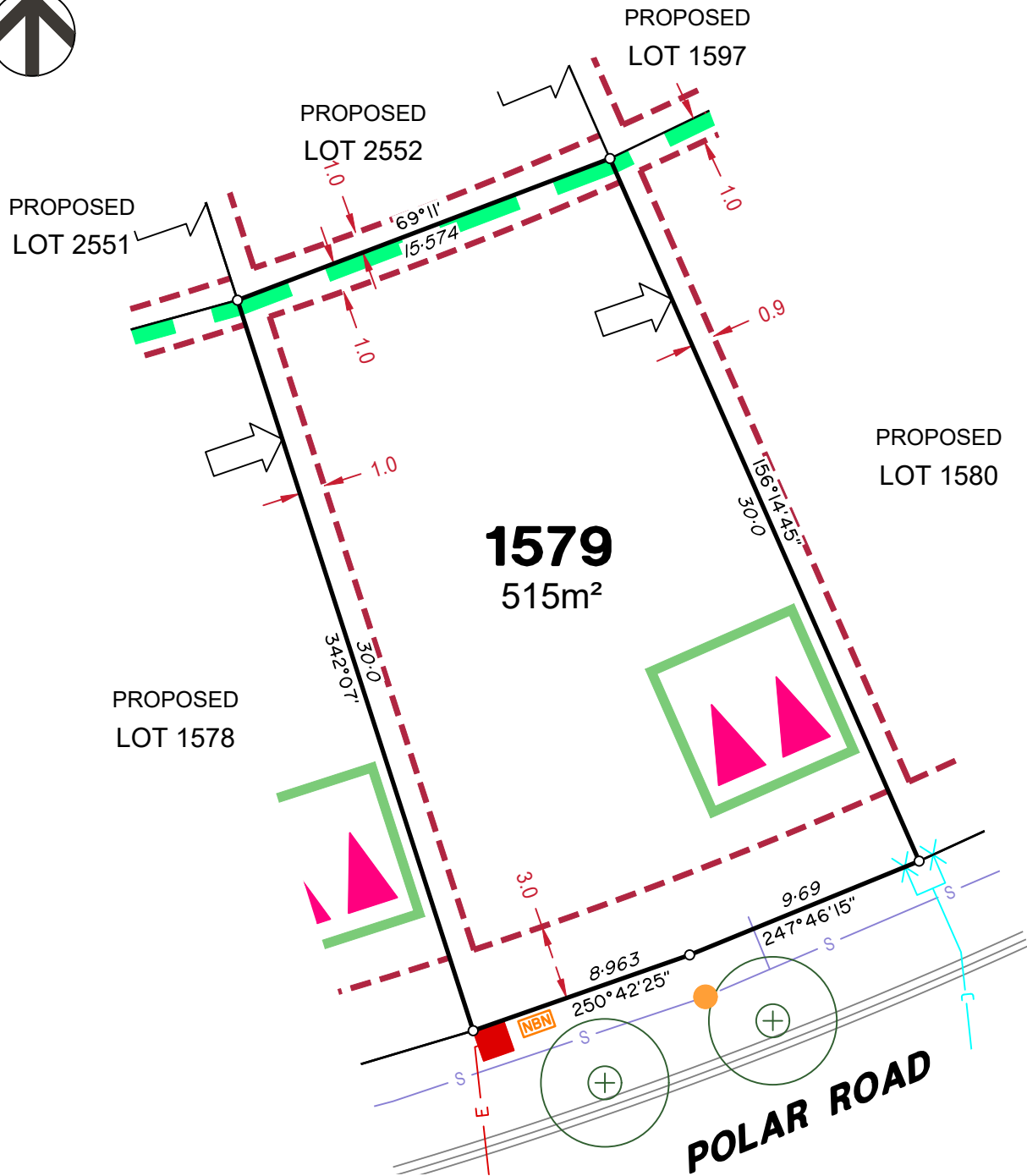
Compaction of any fill material placed on this site shall be completed to level one inspection and testing services in accordance with AS3798-2007.

Location of sewer, roofwater, stormwater, water reticulation and electricity lines, manholes and pits are those shown on engineering design drawings, supplied by Peak Urban and may differ from the as-constructed location.

Plan of Development information Supplied by Colliers.

Copyright © Veris Australia Pty Ltd
August 2025

Plot Date: 22 Aug, 2025
 Computer File Ref: 30109-St4G-SP-(D).dwg



LEGEND

Rock Retaining Wall shown as:-	
Sleeper Retaining Wall shown as:-	
Landscape Retaining Wall shown as:-	
Sewer line	
Sewer Manhole	
Roofwater Drainage line and Catch Pit	
Stormwater Drainage Line	
Stormwater Manhole	
Stormwater Pit	
Water Main	
Water Conduit	
Water Service Point of Entry	
Underground Electricity, Street Light, Electricity Pillar & NBN	
Developer Fencing	
Concrete Pathway	
Zero Setback Building Line	
Indicative Building Envelope	
Bin Pads	
Indicative Parking Access Location	
Landscape Street Tree	

ADDITIONAL NOTES:

Allotments used as Multiple Residential Allotments in accordance with the approved Plan of Development may have a reduced primary road setback to 3.0metres as noted on the Plan of Development Table.

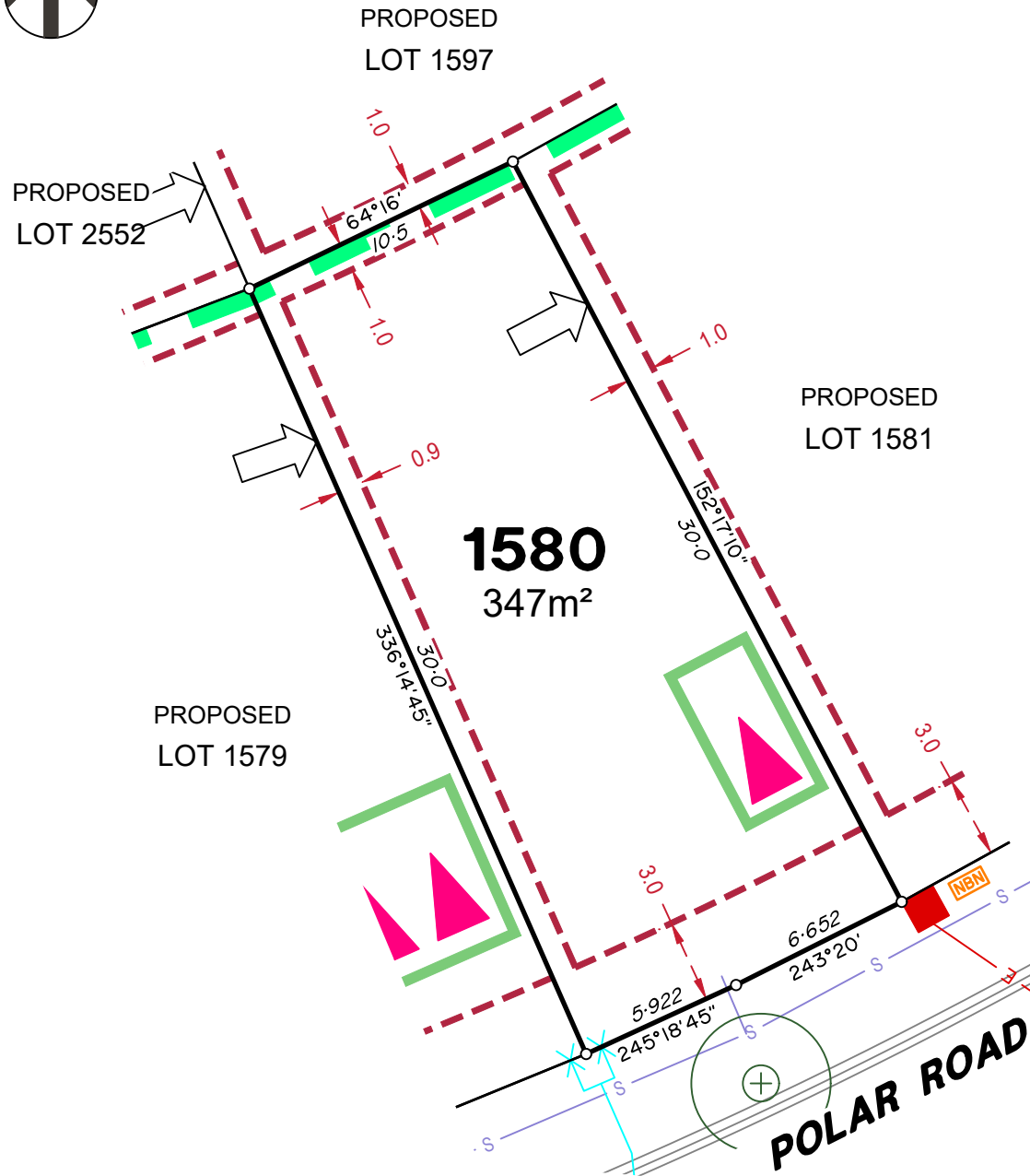
Compaction of any fill material placed on this site shall be completed to level one inspection and testing services in accordance with AS3798-2007.

Location of sewer, roofwater, stormwater, water reticulation and electricity lines, manholes and pits are those shown on engineering design drawings, supplied by Peak Urban and may differ from the as-constructed location.

Plan of Development information Supplied by Colliers.

Copyright © Veris Australia Pty Ltd
August 2025

Plot Date: 19 Aug, 2025
Computer File Ref: 30109-St4G-SP-(D).dwg



LEGEND

Rock Retaining Wall shown as:-	
Sleeper Retaining Wall shown as:-	
Landscape Retaining Wall shown as:-	
Sewer line	
Sewer Manhole	
Roofwater Drainage line and Catch Pit	
Stormwater Drainage Line	
Stormwater Manhole	
Stormwater Pit	
Water Main	
Water Conduit	
Water Service Point of Entry	
Underground Electricity, Street Light, Electricity Pillar & NBN	
Developer Fencing	
Concrete Pathway	
Landscape Street Tree	
Zero Setback Building Line	
Indicative Building Envelope	
Bin Pads	
Indicative Parking Access Location	

ADDITIONAL NOTES:

Allotments used as Multiple Residential Allotments in accordance with the approved Plan of Development may have a reduced primary road setback to 3.0metres as noted on the Plan of Development Table.

Compaction of any fill material placed on this site shall be completed to level one inspection and testing services in accordance with AS3798-2007.

Location of sewer, roofwater, stormwater, water reticulation and electricity lines, manholes and pits are those shown on engineering design drawings, supplied by Peak Urban and may differ from the as-constructed location.

Plan of Development information Supplied by Colliers.

Copyright © Veris Australia Pty Ltd
August 2025

Plot Date: 19 Aug, 2025
 Computer File Ref: 30109-St4G-SP-(D).dwg



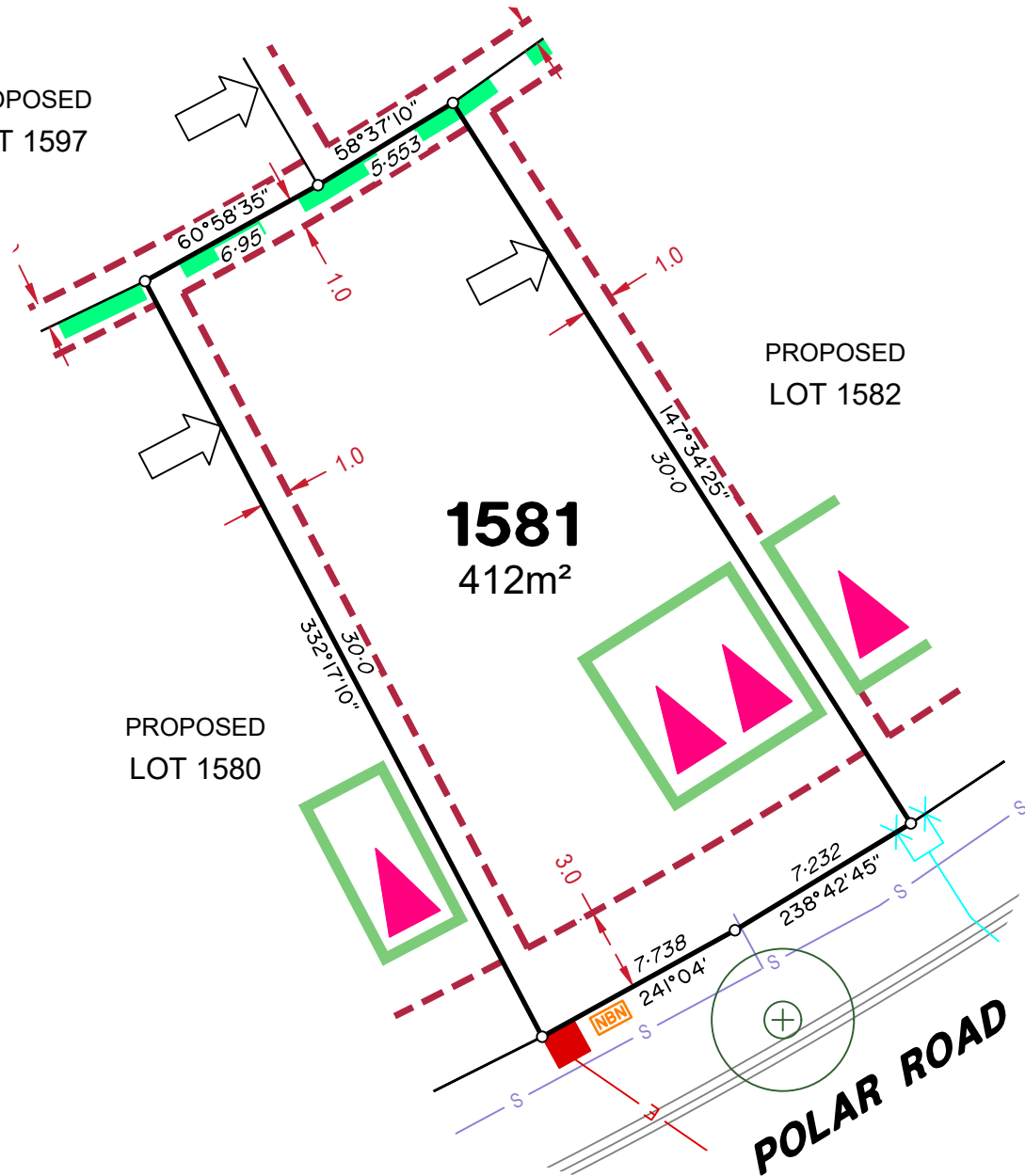
PROPOSED
LOT 1596

PROPOSED
LOT 1597

PROPOSED
LOT 1582

1581
412m²

PROPOSED
LOT 1580



LEGEND

Rock Retaining Wall shown as:-	
Sleeper Retaining Wall shown as:-	
Landscape Retaining Wall shown as:-	
Sewer line	
Sewer Manhole	
Roofwater Drainage line and Catch Pit	
Stormwater Drainage Line	
Stormwater Manhole	
Stormwater Pit	
Water Main	
Water Conduit	
Water Service Point of Entry	
Underground Electricity, Street Light, Electricity Pillar & NBN	
Developer Fencing	
Concrete Pathway	
Zero Setback Building Line	
Landscape Street Tree	
Indicative Building Envelope	
Bin Pads	
Indicative Parking Access Location	

ADDITIONAL NOTES:

Allotments used as Multiple Residential Allotments in accordance with the approved Plan of Development may have a reduced primary road setback to 3.0metres as noted on the Plan of Development Table.

Compaction of any fill material placed on this site shall be completed to level one inspection and testing services in accordance with AS3798-2007.

Location of sewer, roofwater, stormwater, water reticulation and electricity lines, manholes and pits are those shown on engineering design drawings, supplied by Peak Urban and may differ from the as-constructed location.

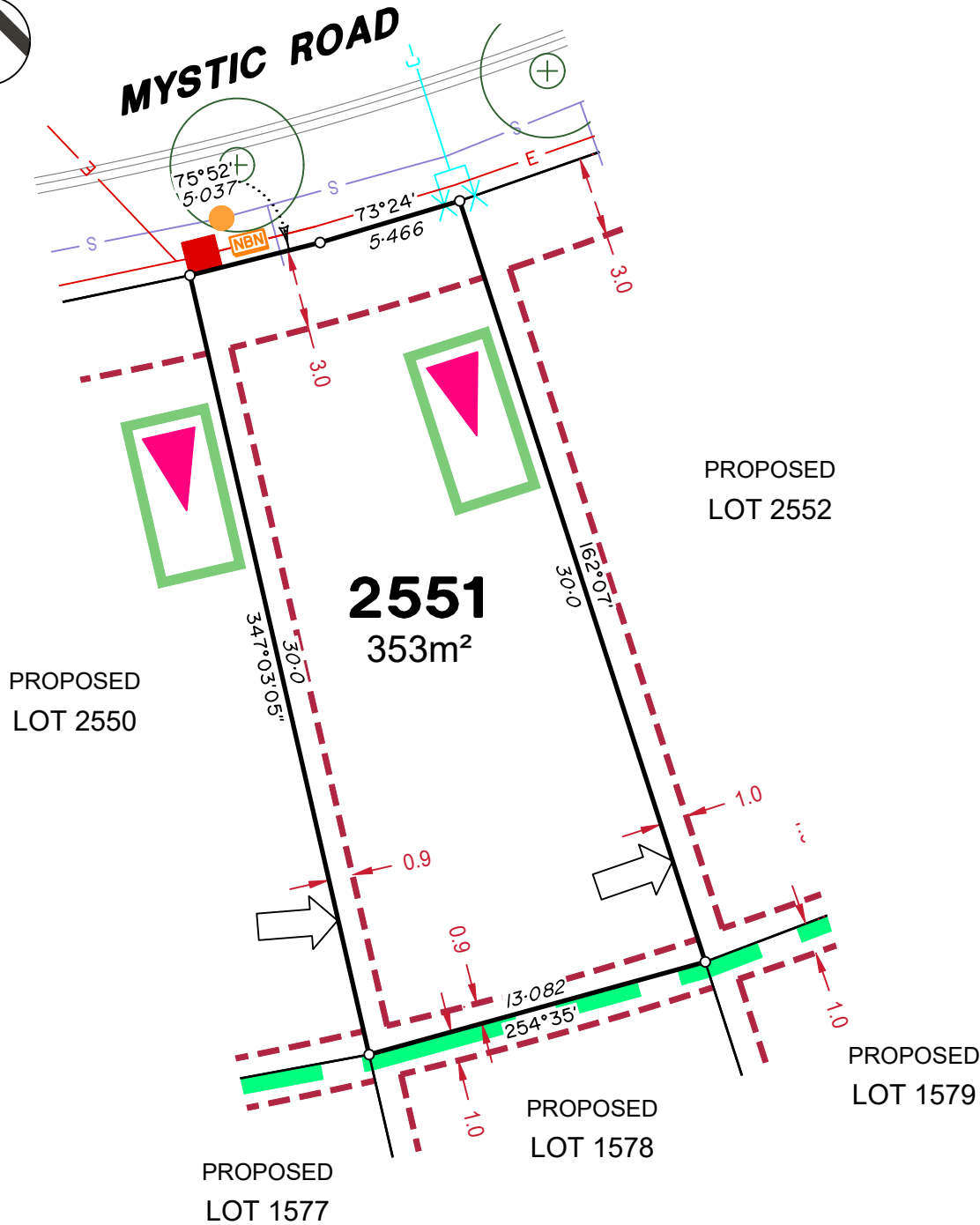
Plan of Development information Supplied by Colliers.

Copyright © Veris Australia Pty Ltd
August 2025

Plot Date: 19 Aug, 2025
Computer File Ref: 30109-St4G-SP-(D).dwg



MYSTIC ROAD



LEGEND

Rock Retaining Wall shown as:-	
Sleeper Retaining Wall shown as:-	
Landscape Retaining Wall shown as:-	
Sewer line	
Sewer Manhole	
Roofwater Drainage line and Catch Pit	
Stormwater Drainage Line	
Stormwater Manhole	
Stormwater Pit	
Water Main	
Water Conduit	
Water Service Point of Entry	
Underground Electricity, Street Light, Electricity Pillar & NBN	
Developer Fencing	
Concrete Pathway	
Zero Setback Building Line	
Landscape Street Tree	
Indicative Building Envelope	
Bin Pads	
Indicative Parking Access Location	

ADDITIONAL NOTES:

Allotments used as Multiple Residential Allotments in accordance with the approved Plan of Development may have a reduced primary road setback to 3.0metres as noted on the Plan of Development Table.

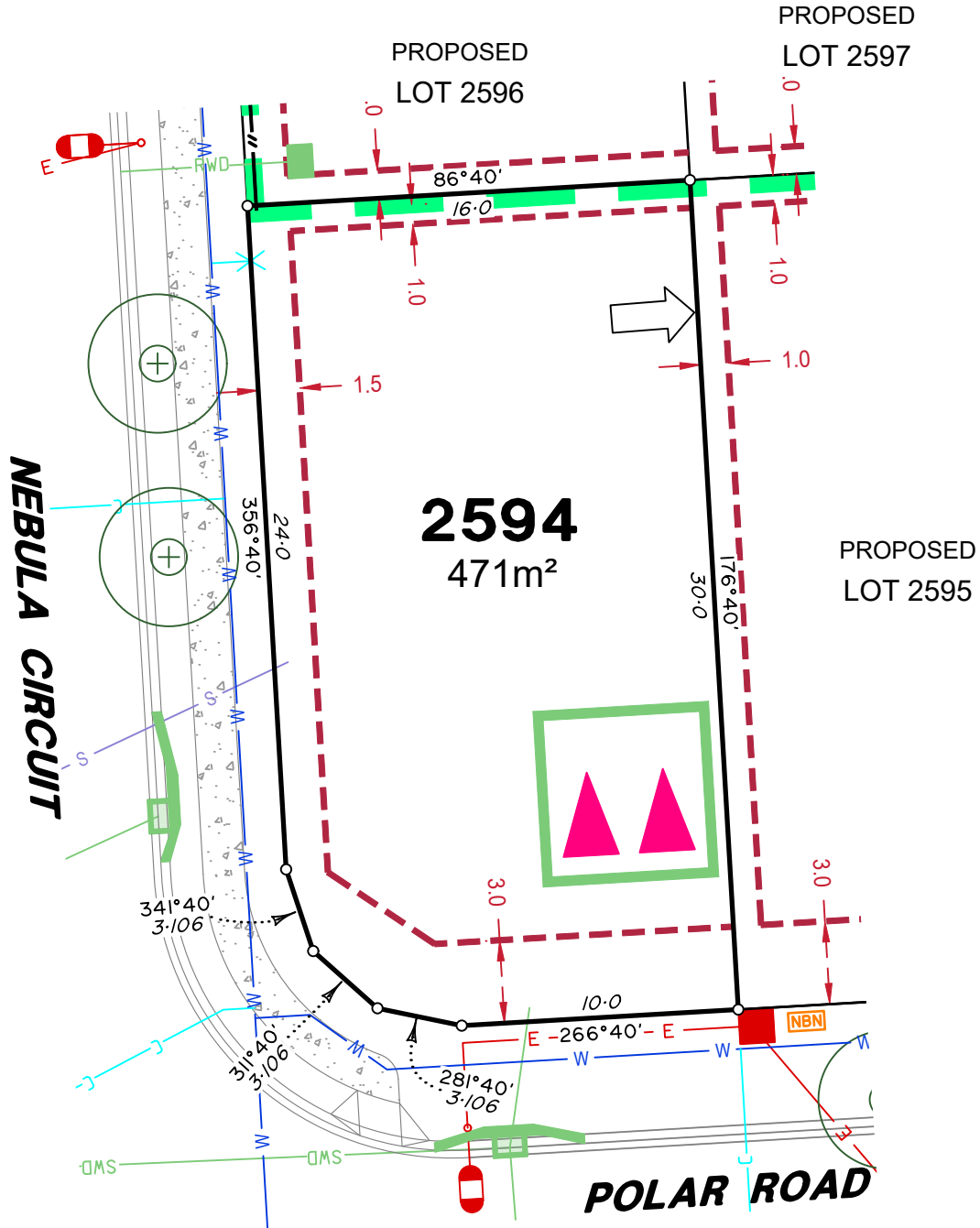
Compaction of any fill material placed on this site shall be completed to level one inspection and testing services in accordance with AS3798-2007.

Location of sewer, roofwater, stormwater, water reticulation and electricity lines, manholes and pits are those shown on engineering design drawings, supplied by Peak Urban and may differ from the as-constructed location.

Plan of Development information Supplied by Colliers.

Copyright © Veris Australia Pty Ltd
August 2025

Plot Date: 22 Aug, 2025
 Computer File Ref: 30109-St4G-SP-(D).dwg



LEGEND

Rock Retaining Wall shown as:-	
Sleeper Retaining Wall shown as:-	
Landscape Retaining Wall shown as:-	
Sewer line	
Sewer Manhole	
Roofwater Drainage line and Catch Pit	
Stormwater Drainage Line	
Stormwater Manhole	
Stormwater Pit	
Water Main	
Water Conduit	
Water Service Point of Entry	
Underground Electricity, Street Light, Electricity Pillar & NBN	
Developer Fencing	
Concrete Pathway	
Landscape Street Tree	
Zero Setback Building Line	
Indicative Building Envelope	
Bin Pads	
Indicative Parking Access Location	

ADDITIONAL NOTES:

Allotments used as Multiple Residential Allotments in accordance with the approved Plan of Development may have a reduced primary road setback to 3.0metres as noted on the Plan of Development Table.

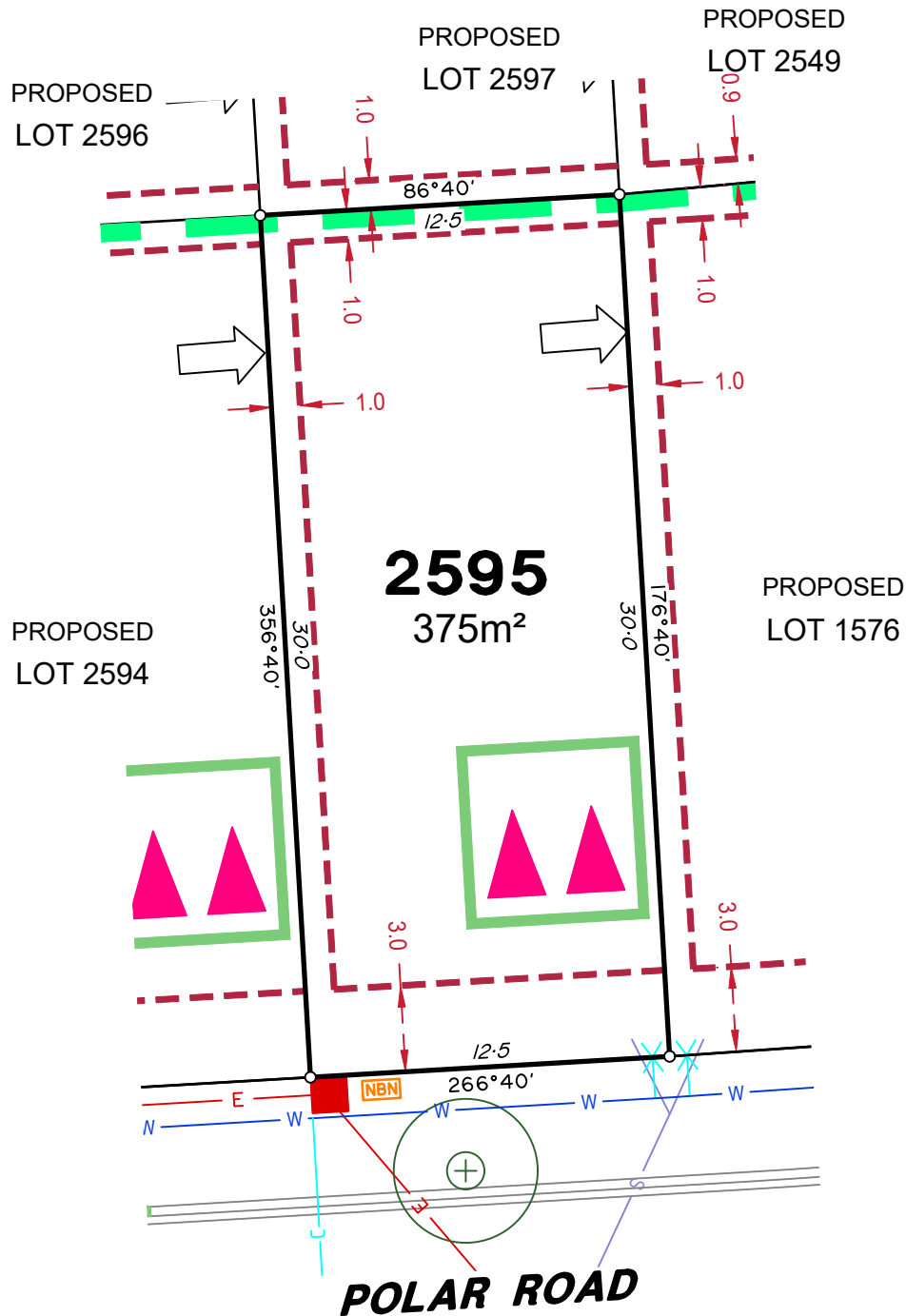
Compaction of any fill material placed on this site shall be completed to level one inspection and testing services in accordance with AS3798-2007.

Location of sewer, roofwater, stormwater, water reticulation and electricity lines, manholes and pits are those shown on engineering design drawings, supplied by Peak Urban and may differ from the as-constructed location.

Plan of Development information Supplied by Colliers.

Copyright © Veris Australia Pty Ltd
August 2025

Plot Date: 22 Aug, 2025
 Computer File Ref: 30109-S4G-SP-(D).dwg



LEGEND

Rock Retaining Wall shown as:-	
Sleeper Retaining Wall shown as:-	
Landscape Retaining Wall shown as:-	
Sewer line	
Sewer Manhole	
Roofwater Drainage line and Catch Pit	
Stormwater Drainage Line	
Stormwater Manhole	
Stormwater Pit	
Water Main	
Water Conduit	
Water Service Point of Entry	
Underground Electricity, Street Light, Electricity Pillar & NBN	
Developer Fencing	
Concrete Pathway	
Landscape Street Tree	
Zero Setback Building Line	
Indicative Building Envelope	
Bin Pads	
Indicative Parking Access Location	

ADDITIONAL NOTES:

Allotments used as Multiple Residential Allotments in accordance with the approved Plan of Development may have a reduced primary road setback to 3.0metres as noted on the Plan of Development Table.

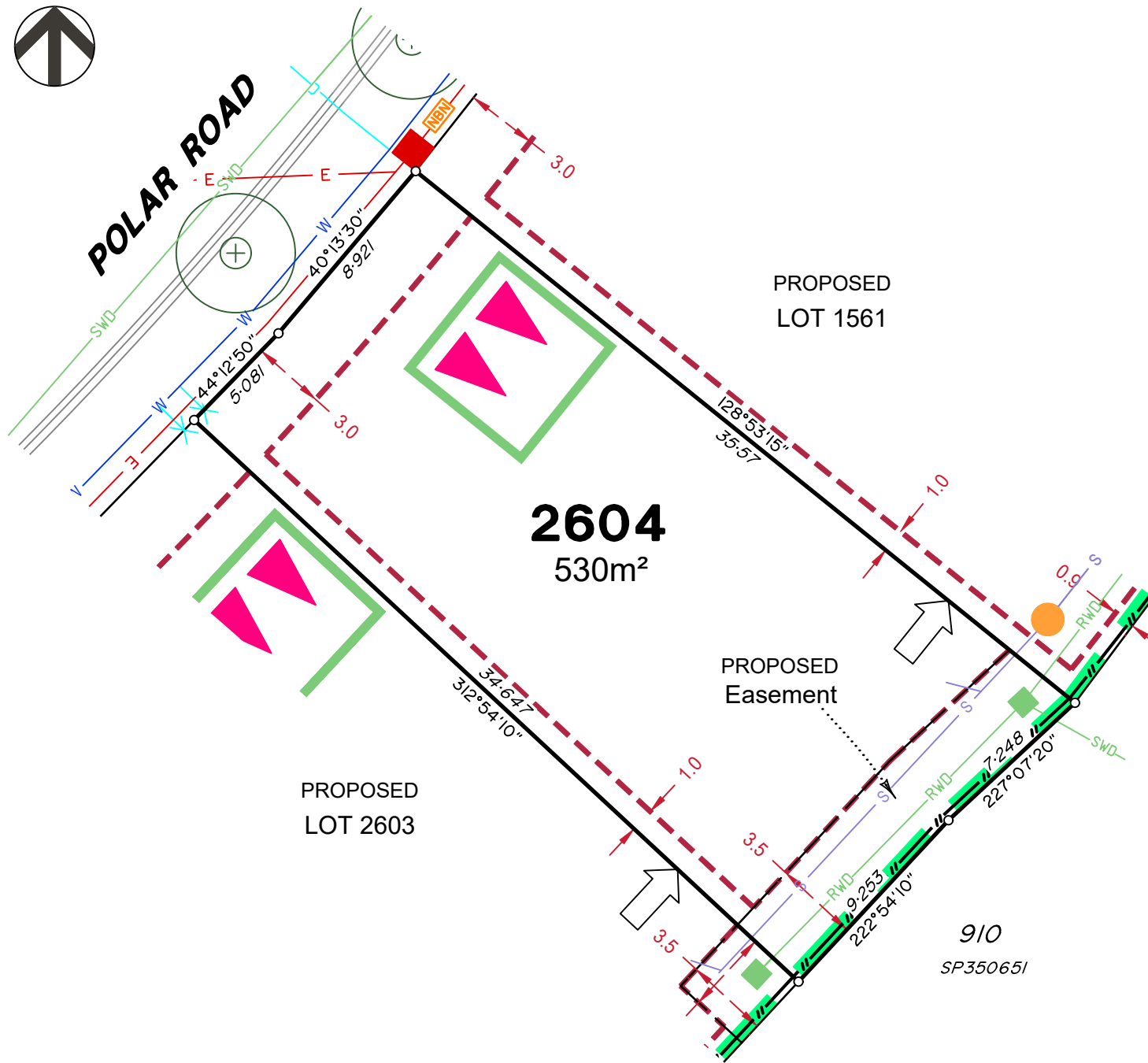
Compaction of any fill material placed on this site shall be completed to level one inspection and testing services in accordance with AS3798-2007.

Location of sewer, roofwater, stormwater, water reticulation and electricity lines, manholes and pits are those shown on engineering design drawings, supplied by Peak Urban and may differ from the as-constructed location.

Plan of Development information Supplied by Colliers.

Copyright © Veris Australia Pty Ltd
August 2025

Plot Date: 19 Aug, 2025
Computer File Ref: 30109-St4G-SP-(D).dwg



LEGEND

Rock Retaining Wall shown as:-	
Sleeper Retaining Wall shown as:-	
Landscape Retaining Wall shown as:-	
Sewer line	
Sewer Manhole	
Roofwater Drainage line and Catch Pit	
Stormwater Drainage Line	
Stormwater Manhole	
Stormwater Pit	
Water Main	
Water Conduit	
Water Service Point of Entry	
Underground Electricity, Street Light, Electricity Pillar & NBN	
Developer Fencing	
Concrete Pathway	
Zero Setback Building Line	
Landscape Street Tree	
Indicative Building Envelope	
Bin Pads	
Indicative Parking Access Location	

ADDITIONAL NOTES:

Allotments used as Multiple Residential Allotments in accordance with the approved Plan of Development may have a reduced primary road setback to 3.0metres as noted on the Plan of Development Table.

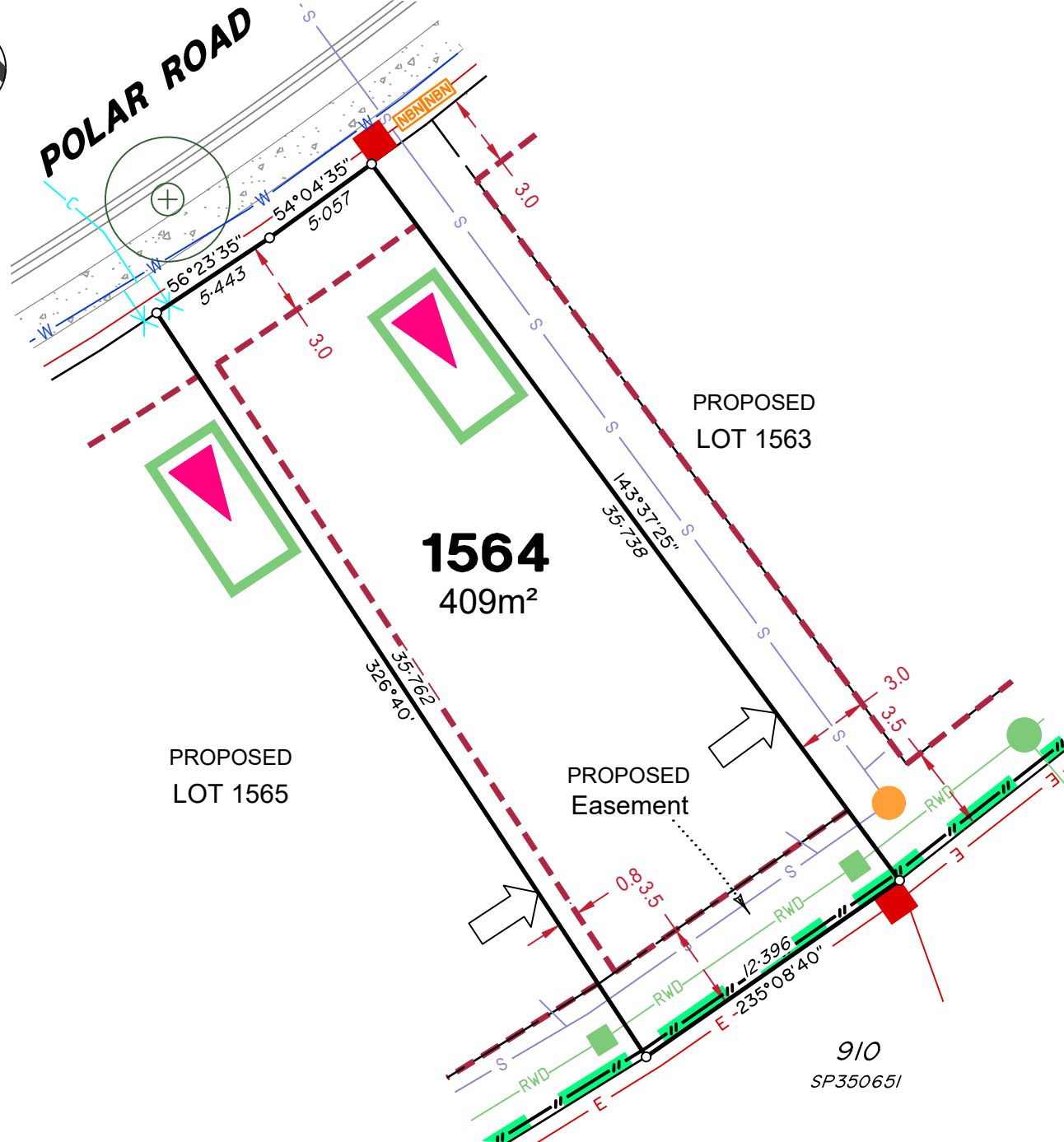
Compaction of any fill material placed on this site shall be completed to level one inspection and testing services in accordance with AS3798-2007.

Location of sewer, roofwater, stormwater, water reticulation and electricity lines, manholes and pits are those shown on engineering design drawings, supplied by Peak Urban and may differ from the as-constructed location.

Plan of Development information Supplied by Colliers.

Copyright © Veris Australia Pty Ltd
August 2025

Plot Date: 19 Aug, 2025
Computer File Ref: 30109-S14G-SP-(D).dwg



LEGEND

Rock Retaining Wall shown as:-	
Sleeper Retaining Wall shown as:-	
Landscape Retaining Wall shown as:-	
Sewer line	
Sewer Manhole	
Roofwater Drainage line and Catch Pit	
Stormwater Drainage Line	
Stormwater Manhole	
Stormwater Pit	
Water Main	
Water Conduit	
Water Service Point of Entry	
Underground Electricity, Street Light, Electricity Pillar & NBN	
Developer Fencing	
Concrete Pathway	
Zero Setback Building Line	
Landscape Street Tree	
Indicative Building Envelope	
Bin Pads	
Indicative Parking Access Location	

ADDITIONAL NOTES:

Allotments used as Multiple Residential Allotments in accordance with the approved Plan of Development may have a reduced primary road setback to 3.0metres as noted on the Plan of Development Table.

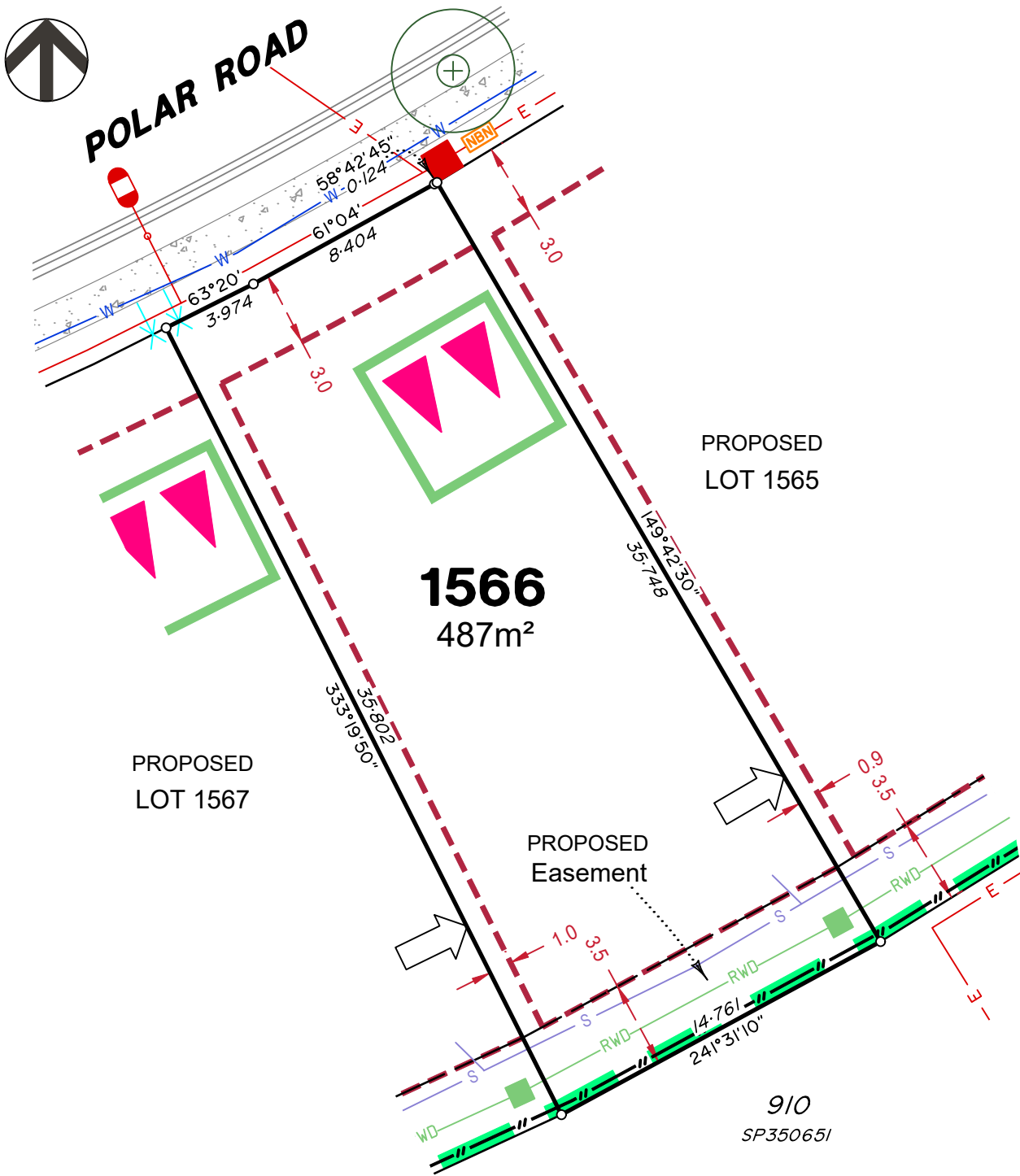
Compaction of any fill material placed on this site shall be completed to level one inspection and testing services in accordance with AS3798-2007.

Location of sewer, roofwater, stormwater, water reticulation and electricity lines, manholes and pits are those shown on engineering design drawings, supplied by Peak Urban and may differ from the as-constructed location.

Plan of Development information Supplied by Colliers.

Copyright © Veris Australia Pty Ltd
August 2025

Plot Date: 19 Aug, 2025
 Computer File Ref: 30109-St4G-SP-(D).dwg



LEGEND

- Rock Retaining Wall shown as:-
- Sleeper Retaining Wall shown as:-
- Landscape Retaining Wall shown as:-
- Sewer line
- Sewer Manhole
- Roofwater Drainage line and Catch Pit
- Stormwater Drainage Line
- Stormwater Manhole
- Stormwater Pit
- Water Main
- Water Conduit
- Water Service Point of Entry
- Underground Electricity, Street Light, Electricity Pillar & NBN
- Developer Fencing
- Concrete Pathway
- Landscape Street Tree
- Zero Setback Building Line
- Indicative Building Envelope
- Bin Pads
- Indicative Parking Access Location

ADDITIONAL NOTES:

Allotments used as Multiple Residential Allotments in accordance with the approved Plan of Development may have a reduced primary road setback to 3.0metres as noted on the Plan of Development Table.

Compaction of any fill material placed on this site shall be completed to level one inspection and testing services in accordance with AS3798-2007.

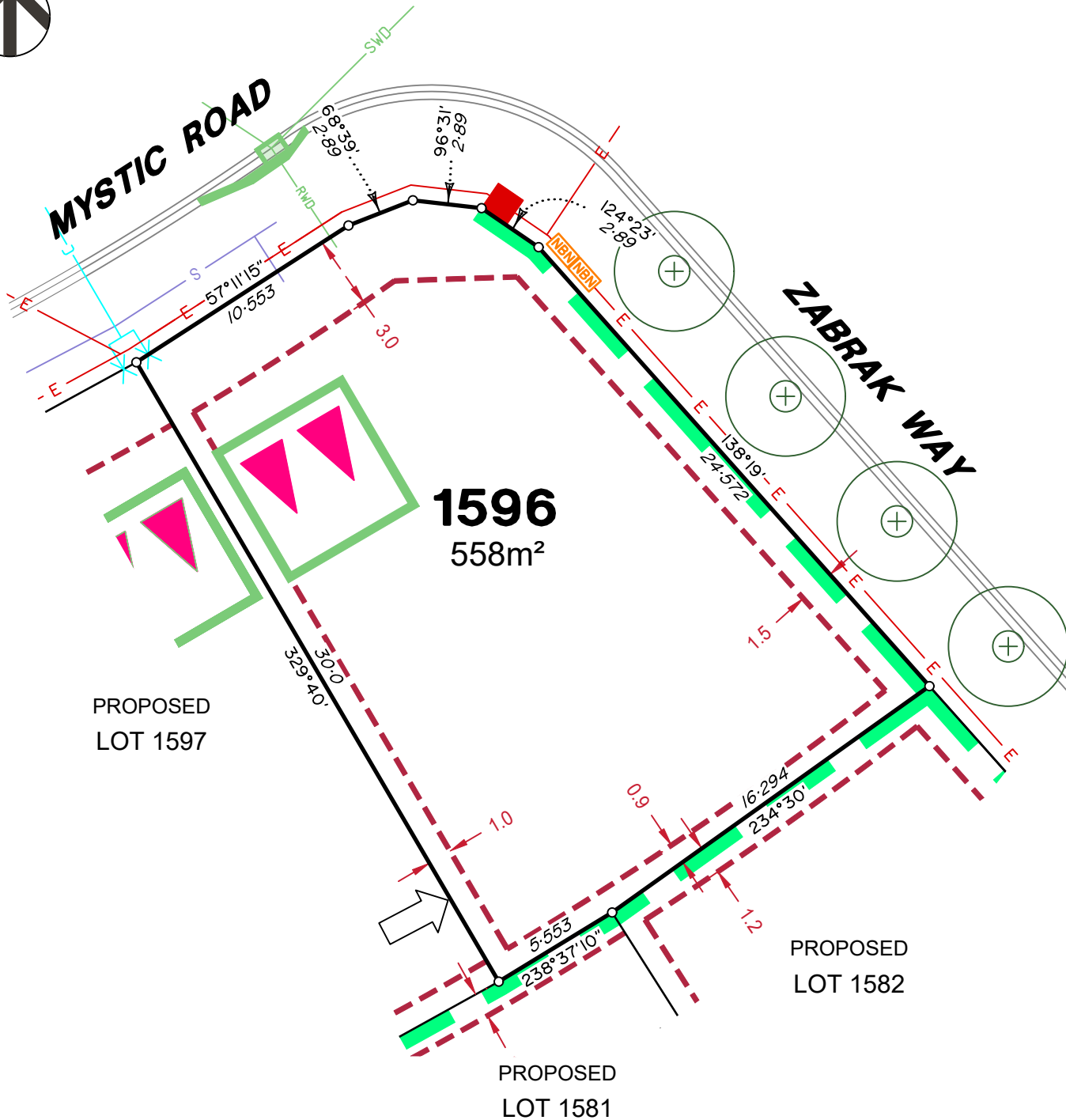
Location of sewer, roofwater, stormwater, water reticulation and electricity lines, manholes and pits are those shown on engineering design drawings, supplied by Peak Urban and may differ from the as-constructed location.

Plan of Development information Supplied by Colliers.

Copyright © Veris Australia Pty Ltd
August 2025

Plot Date: 19 Aug, 2025
 Computer File Ref: 30109-St4G-SP-(D).dwg

910
 SP350651



LEGEND

Rock Retaining Wall shown as:-	
Sleeper Retaining Wall shown as:-	
Landscape Retaining Wall shown as:-	
Sewer line	
Sewer Manhole	
Roofwater Drainage line and Catch Pit	
Stormwater Drainage Line	
Stormwater Manhole	
Stormwater Pit	
Water Main	
Water Conduit	
Water Service Point of Entry	
Underground Electricity, Street Light, Electricity Pillar & NBN	
Developer Fencing	
Concrete Pathway	
Zero Setback Building Line	
Landscape Street Tree	
Indicative Building Envelope	
Bin Pads	
Indicative Parking Access Location	

ADDITIONAL NOTES:

Allotments used as Multiple Residential Allotments in accordance with the approved Plan of Development may have a reduced primary road setback to 3.0metres as noted on the Plan of Development Table.

Compaction of any fill material placed on this site shall be completed to level one inspection and testing services in accordance with AS3798-2007.

Location of sewer, roofwater, stormwater, water reticulation and electricity lines, manholes and pits are those shown on engineering design drawings, supplied by Peak Urban and may differ from the as-constructed location.

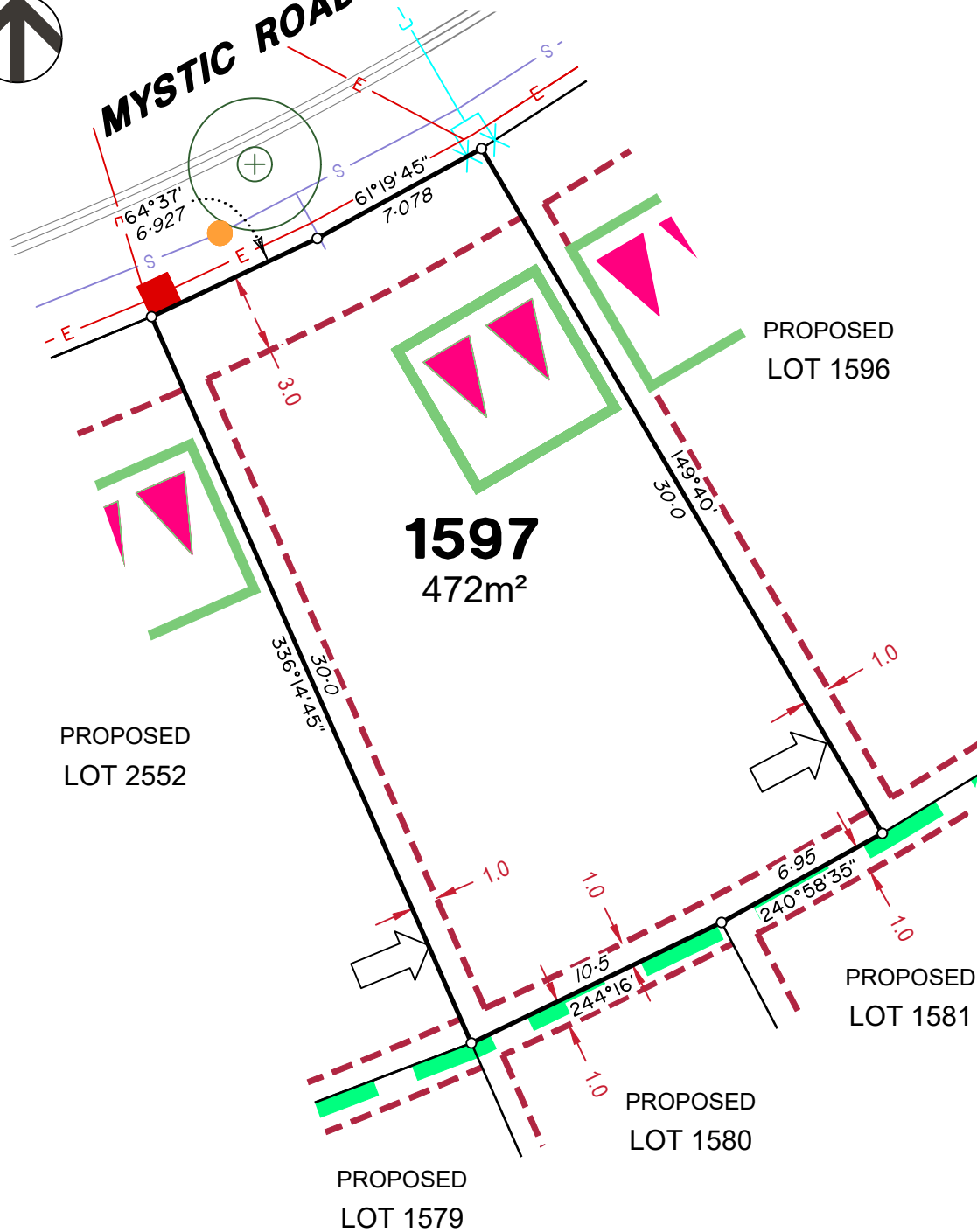
Plan of Development information Supplied by Colliers.

Copyright © Veris Australia Pty Ltd
August 2025

Plot Date: 22 Aug, 2025
 Computer File Ref: 30109-SI4G-SP-(D).dwg



MYSTIC ROAD



LEGEND

Rock Retaining Wall shown as:-	
Sleeper Retaining Wall shown as:-	
Landscape Retaining Wall shown as:-	
Sewer line	
Sewer Manhole	
Roofwater Drainage line and Catch Pit	
Stormwater Drainage Line	
Stormwater Manhole	
Stormwater Pit	
Water Main	
Water Conduit	
Water Service Point of Entry	
Underground Electricity, Street Light, Electricity Pillar & NBN	
Developer Fencing	
Concrete Pathway	
Zero Setback Building Line	
Landscape Street Tree	
Indicative Building Envelope	
Bin Pads	
Indicative Parking Access Location	

ADDITIONAL NOTES:

Allotments used as Multiple Residential Allotments in accordance with the approved Plan of Development may have a reduced primary road setback to 3.0metres as noted on the Plan of Development Table.

Compaction of any fill material placed on this site shall be completed to level one inspection and testing services in accordance with AS3798-2007.

Location of sewer, roofwater, stormwater, water reticulation and electricity lines, manholes and pits are those shown on engineering design drawings, supplied by Peak Urban and may differ from the as-constructed location.

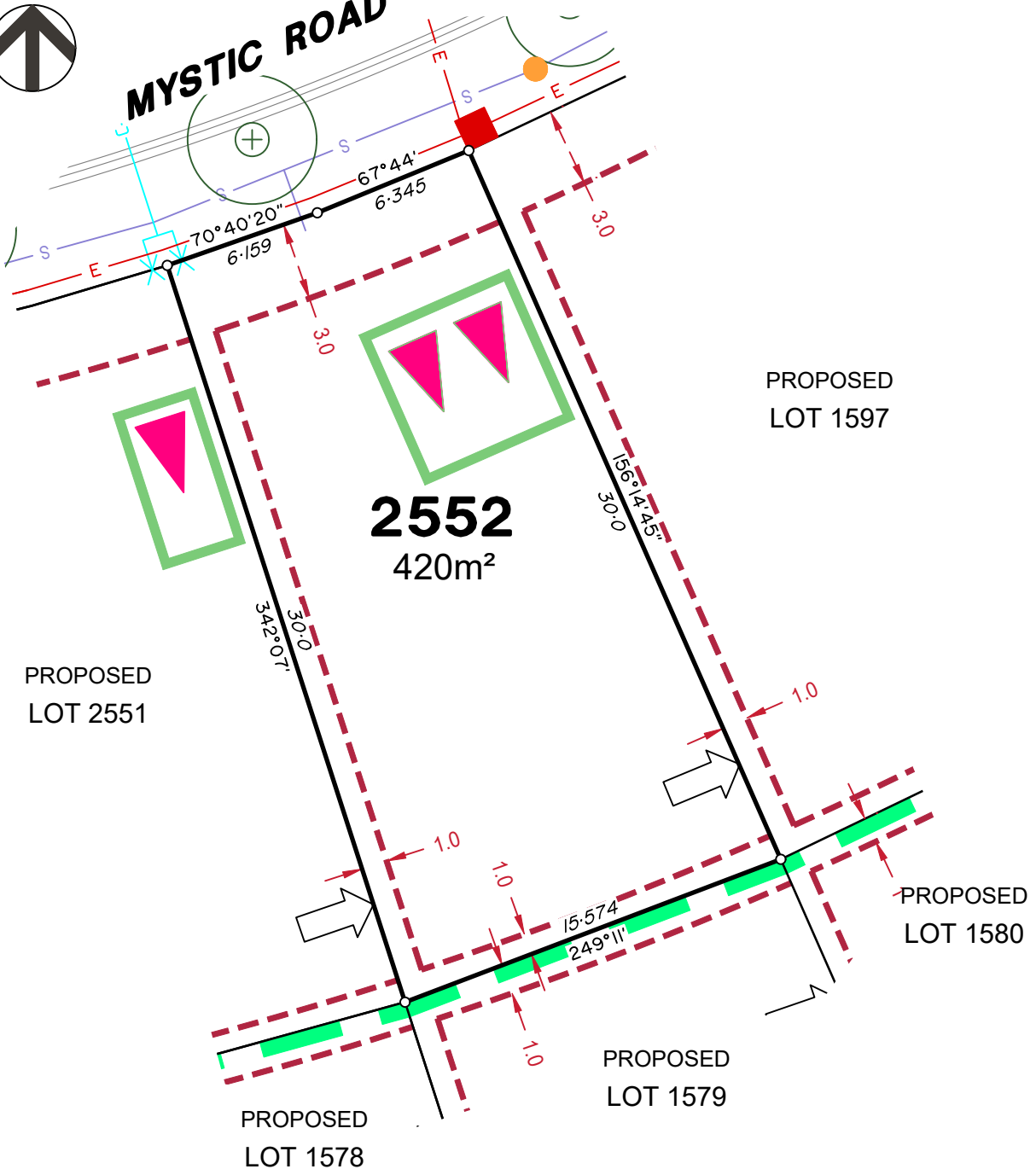
Plan of Development information Supplied by Colliers.

Copyright © Veris Australia Pty Ltd
August 2025

Plot Date: 19 Aug, 2025
 Computer File Ref: 30109-St4G-SP-(D).dwg



MYSTIC ROAD



LEGEND

Rock Retaining Wall shown as:-	
Sleeper Retaining Wall shown as:-	
Landscape Retaining Wall shown as:-	
Sewer line	
Sewer Manhole	
Roofwater Drainage line and Catch Pit	
Stormwater Drainage Line	
Stormwater Manhole	
Stormwater Pit	
Water Main	
Water Conduit	
Water Service Point of Entry	
Underground Electricity, Street Light, Electricity Pillar & NBN	
Developer Fencing	
Concrete Pathway	
Zero Setback Building Line	
Indicative Building Envelope	
Bin Pads	
Indicative Parking Access Location	
Landscape Street Tree	

ADDITIONAL NOTES:

Allotments used as Multiple Residential Allotments in accordance with the approved Plan of Development may have a reduced primary road setback to 3.0metres as noted on the Plan of Development Table.

Compaction of any fill material placed on this site shall be completed to level one inspection and testing services in accordance with AS3798-2007.

Location of sewer, roofwater, stormwater, water reticulation and electricity lines, manholes and pits are those shown on engineering design drawings, supplied by Peak Urban and may differ from the as-constructed location.

Plan of Development information Supplied by Colliers.

Copyright © Veris Australia Pty Ltd
August 2025

Plot Date: 22 Aug, 2025
 Computer File Ref: 30109-S4G-SP-(D).dwg



POLAR ROAD

ROAD

1563
590m²

PROPOSED
LOT 1564

PROPOSED
Easement

PROPOSED
Easement

910
SP350651

LEGEND

Rock Retaining Wall shown as:-
Sleeper Retaining Wall shown as:-
Landscape Retaining Wall shown as:-



Sewer line



Sewer Manhole



Roofwater Drainage line and
Catch Pit



Stormwater Drainage Line



Stormwater Manhole



Stormwater Pit



Water Main



Water Conduit



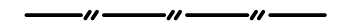
Water Service Point of Entry



Underground Electricity, Street Light,
Electricity Pillar & NBN



Developer Fencing



Concrete Pathway



Landscape Street Tree



Zero Setback Building Line



Indicative Building Envelope



Bin Pads



Indicative Parking Access Location



ADDITIONAL NOTES:

Allotments used as Multiple Residential Allotments in accordance with the approved Plan of Development may have a reduced primary road setback to 3.0metres as noted on the Plan of Development Table.

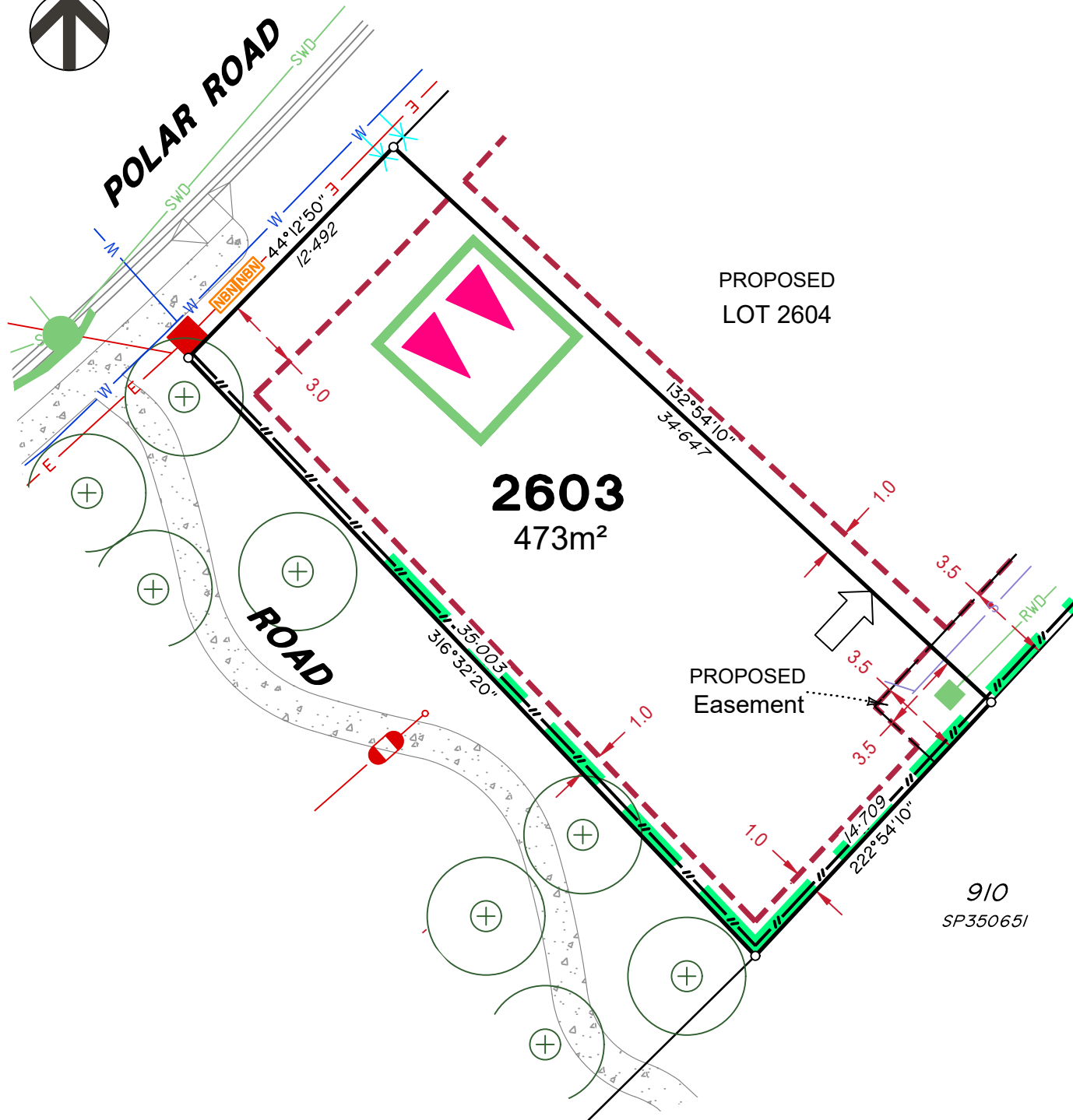
Compaction of any fill material placed on this site shall be completed to level one inspection and testing services in accordance with AS3798-2007.

Location of sewer, roofwater, stormwater, water reticulation and electricity lines, manholes and pits are those shown on engineering design drawings, supplied by Peak Urban and may differ from the as-constructed location.

Plan of Development information Supplied by Colliers.

Copyright © Veris Australia Pty Ltd
August 2025

Plot Date: 19 Aug, 2025
Computer File Ref: 30109-St4G-SP-(D).dwg



LEGEND

Rock Retaining Wall shown as:-	
Sleeper Retaining Wall shown as:-	
Landscape Retaining Wall shown as:-	
Sewer line	
Sewer Manhole	
Roofwater Drainage line and Catch Pit	
Stormwater Drainage Line	
Stormwater Manhole	
Stormwater Pit	
Water Main	
Water Conduit	
Water Service Point of Entry	
Underground Electricity, Street Light, Electricity Pillar & NBN	
Developer Fencing	
Concrete Pathway	
Zero Setback Building Line	
Landscape Street Tree	
Indicative Building Envelope	
Bin Pads	
Indicative Parking Access Location	

ADDITIONAL NOTES:

Allotments used as Multiple Residential Allotments in accordance with the approved Plan of Development may have a reduced primary road setback to 3.0metres as noted on the Plan of Development Table.

Compaction of any fill material placed on this site shall be completed to level one inspection and testing services in accordance with AS3798-2007.

Location of sewer, roofwater, stormwater, water reticulation and electricity lines, manholes and pits are those shown on engineering design drawings, supplied by Peak Urban and may differ from the as-constructed location.

Plan of Development information Supplied by Colliers.

Copyright © Veris Australia Pty Ltd
August 2025

Plot Date: 19 Aug, 2025
 Computer File Ref: 30109-St4G-SP-(D).dwg