



**DRAFT ONLY – FOR INFORMATION PURPOSES**  
This Preliminary BAL Contour Plan and BAL Rating Table is provided in draft form for information only. It must not be relied upon for property purchase, design, or construction decisions. Site conditions can vary, and the bushfire risk applicable to individual lots may differ from that shown. All purchasers must obtain their own independent bushfire assessment and advice from a qualified professional prior to making any purchase or development decisions. The document is not approved and is indicative only. This document does not form part of contract documentation. The developer and its consultants accept no responsibility for reliance on this document.

- Legend**
- Application Boundary
  - Stage Boundary
  - Lease Area (Signage)
  - Environmental Constraints
  - Indicative Core Corridor (100m)
  - Indicative Outer Corridor (200m)
  - Existing Q100
  - Concept Design Contours (1m)
  - Possible Multiple Residential Allotment (Max. no. of dwellings)
  - Potential School Site for Acquisition (12ha)

**TO BE READ IN CONJUNCTION WITH 110056-640D STAGES 8-14 OVERALL STATISTICS**

PLAN REF: **110056 – 639**  
Rev No: **D**  
DATE: 07 JULY 2025  
CLIENT: PEET  
DRAWN BY: JC / MM  
CHECKED BY: MD



FLAGSTONE CA3 SOUTH  
**STAGES 8 - 14**  
**OVERALL PLAN OF SUBDIVISION**

**PEET**

URBAN DESIGN  
Level 8  
31 Duncan Street  
PO Box 1559  
Fortitude Valley QLD 4006  
T +61 7 3539 9500  
W rpsgroup.com

**rps**  
A TETRA TECH COMPANY

© COPYRIGHT  
Unauthorised reproduction or amendment not permitted. Please contact the author.

0 100 200 300 400 500 1 : 7,500 @ A3



CA3 SOUTH - Stage 8 - 14 Yield Breakdown

Lot Type	Stage 8	Stage 9	Stage 10	Stage 11	Stage 12	Stage 13	Stage 14	Overall	
	Yield	Yield	Yield	Yield	Yield	Yield	Yield	Yield	%
20.5m Deep Product									
Premium Villa 12.5m Allotment	—	8	—	—	—	—	—	8	0%
Courtyard 14m Allotment	—	2	—	—	—	—	—	2	0%
Subtotal	—	10	—	—	—	—	—	10	1%
25m Deep Terrace Product									
Terrace 9.5m Allotment	—	32	—	—	—	—	—	32	2%
Subtotal	—	32	—	—	—	—	—	32	2%
25m Deep Product									
Villa 10m Allotment	—	—	25	17	11	—	—	53	3%
Premium Villa 12.5m Allotment	—	—	26	17	38	—	2	83	5%
Courtyard 14m Allotment	—	—	12	12	30	—	3	57	3%
Premium Courtyard 16m Allotment	—	—	4	11	5	1	—	21	1%
Premium Traditional 20m Allotment	—	—	—	—	4	—	—	4	0%
Possible Multiple Residential Allotment	—	—	3	1	2	—	—	6	0%
Subtotal	—	—	70	58	90	1	5	224	13%
28m Deep Terrace Product									
Terrace 7.5m Allotment	—	5	—	—	—	—	10	15	1%
Terrace 9.5m Allotment	—	26	—	—	—	—	4	30	2%
Subtotal	—	31	—	—	—	—	14	45	3%
30m Deep Product									
Villa 10m Allotment	—	60	39	12	29	—	52	192	12%
Premium Villa 12.5m Allotment	—	95	66	28	67	23	111	390	24%
Courtyard 14m Allotment	—	108	34	33	43	63	152	433	26%
Premium Courtyard 16m Allotment	—	26	3	10	8	35	43	125	8%
Traditional 18m Allotment	—	4	—	—	—	1	—	5	0%
Premium Traditional 20m Allotment	—	9	1	6	4	15	16	51	3%
Possible Multiple Residential Allotment	—	3	—	6	3	6	3	21	1%
Subtotal	—	305	143	95	154	143	377	1217	74%
50m+ Deep Product									
Courtyard 14m Allotment	—	—	—	—	—	25	—	25	2%
Premium Courtyard 16m Allotment	—	—	5	—	—	20	—	25	2%
Traditional 18m Allotment	—	—	3	—	—	17	—	20	1%
Premium Traditional 20m Allotment	—	—	2	—	—	16	—	18	1%
Ridgetop Allotment	—	—	—	—	—	21	—	21	1%
Subtotal	—	—	10	—	—	99	—	109	7%
Total Residential Allotments	—	378	223	153	244	243	396	1637	100%
Residential Net Density	—	16.8 dw/ha	15.0 dw/ha	13.1 dw/ha	16.5 dw/ha	8.8 dw/ha	15.0 dw/ha	13.6 dw/ha	
Super Lots									
Local Centre	—	—	—	—	—	2	—	2	
District Centre	—	—	—	1	—	—	—	1	
Ambulance	—	—	—	1	—	—	—	1	
Child Care	—	2	1	—	—	—	—	3	
Community Centre	—	—	—	—	—	1	—	1	
State Primary School	1	—	—	—	—	—	—	1	
Medium Density Allotment	—	—	—	2	—	—	1	3	
Balance Allotment	—	—	—	—	—	—	2	2	
Subtotal	1	2	1	4	—	3	3	14	
Total Allotments	1	380	224	157	244	246	399	1651	
Maximum Potential Residential Dwellings (Includes Multiple Residential Allotments)	—	381	226	165	252	254	401	1679	
Maximum Potential Net Residential Density	—	16.9 dw/ha	15.2 dw/ha	14.1 dw/ha	17.1 dw/ha	9.2 dw/ha	15.2 dw/ha	14.0 dw/ha	

CA3 SOUTH - Stage 8 - 14 Land Budget

Land Use	Stage 8	Stage 9	Stage 10	Stage 11	Stage 12	Stage 13	Stage 14	Overall	
	Area	Area	Area	Area	Area	Area	Area	Area	%
	9.607 ha	27.230 ha	19.263 ha	66.075 ha	16.220 ha	36.655 ha	144.021 ha	319.071 ha	100.0%
Saleable Area									
Residential Allotments	—	14.554 ha	8.768 ha	6.286 ha	9.627 ha	20.708 ha	16.547 ha	76.490 ha	24.0%
Medium Density	—	—	—	0.905 ha	—	—	2.863 ha	3.768 ha	1.2%
Local Centre	—	—	—	—	—	1.945 ha	—	1.945 ha	0.6%
District Centre	—	—	—	6.403 ha	—	—	—	6.403 ha	2.0%
Ambulance	—	—	—	0.600 ha	—	—	—	0.600 ha	0.2%
Child Care	—	0.700 ha	—	—	—	—	—	0.700 ha	0.2%
Community Centre	—	—	—	—	—	0.551 ha	—	0.551 ha	0.2%
State Primary School	7.007 ha	—	—	—	—	—	—	7.007 ha	2.2%
Total Area of Allotments	7.007 ha	15.254 ha	8.768 ha	14.194 ha	9.627 ha	23.204 ha	19.410 ha	97.464 ha	30.5%
Road									
North South Arterial Dedication (incl. batters)	—	—	3.049 ha	9.501 ha	—	—	0.126 ha	12.676 ha	4.0%
Trunk Connector 2 Lanes (23.7m)	1.578 ha	2.474 ha	1.120 ha	0.144 ha	0.028 ha	0.327 ha	4.052 ha	9.723 ha	3.0%
Neighbourhood Connector (20.2m)	1.022 ha	1.026 ha	1.094 ha	1.225 ha	1.642 ha	1.016 ha	0.688 ha	7.713 ha	2.4%
Neighbourhood Access Street (16.5m)	—	5.229 ha	3.439 ha	3.124 ha	3.246 ha	4.373 ha	6.177 ha	25.588 ha	8.0%
Laneway (6.5m)	—	0.363 ha	—	—	—	—	0.083 ha	0.446 ha	0.1%
Pedestrian Linkages	—	0.365 ha	0.042 ha	0.088 ha	0.255 ha	0.130 ha	0.638 ha	1.518 ha	0.5%
Total Area of New Road	2.600 ha	9.457 ha	8.744 ha	14.082 ha	5.171 ha	5.846 ha	11.764 ha	57.664 ha	18.1%
Open Space									
Conservation Buffer	—	—	—	—	—	—	1.988 ha	1.988 ha	0.6%
Corridor Park / Conservation	—	1.564 ha	—	21.807 ha	—	6.350 ha	18.067 ha	47.788 ha	15.0%
Stormwater Management	—	—	0.701 ha	—	1.422 ha	—	—	2.123 ha	0.7%
Regional Sports	—	—	—	15.001 ha	—	—	—	15.001 ha	4.7%
District Sports	—	—	—	—	—	—	8.560 ha	8.560 ha	2.7%
Neighbourhood Recreation Park	—	0.580 ha	0.539 ha	0.816 ha	—	0.502 ha	1.905 ha	4.342 ha	1.4%
Local Recreation Park	—	0.103 ha	—	0.175 ha	—	0.753 ha	0.293 ha	1.324 ha	0.4%
Local Linear Recreation Park	—	0.272 ha	0.274 ha	—	—	—	—	0.546 ha	0.2%
Total Open Space	—	2.519 ha	1.514 ha	37.799 ha	1.422 ha	7.605 ha	30.813 ha	81.672 ha	25.6%
Balance Allotments									
Balance Allotment	—	—	0.237 ha	—	—	—	82.034 ha	82.271 ha	25.8%
Total Balance Allotments	—	—	0.237 ha	—	—	—	82.034 ha	82.271 ha	25.8%

PLAN REF: 110056 – 640

Rev No: D  
DATE: 07 JULY 2025  
CLIENT: PEET  
DRAWN BY: JC / MM  
CHECKED BY: MD



Not to Scale @ A3

FLAGSTONE CA3 SOUTH  
STAGES 8 - 14  
OVERALL PLAN OF SUBDIVISION STATISTICS

PEET

URBAN DESIGN  
Level 8  
31 Duncan Street  
PO Box 1559  
Fortitude Valley QLD 4006  
T +61 7 3539 9500  
W rpsgroup.com

rps

A TETRA TECH COMPANY

© COPYRIGHT  
Unauthorised reproduction or amendment not permitted. Please contact the author.

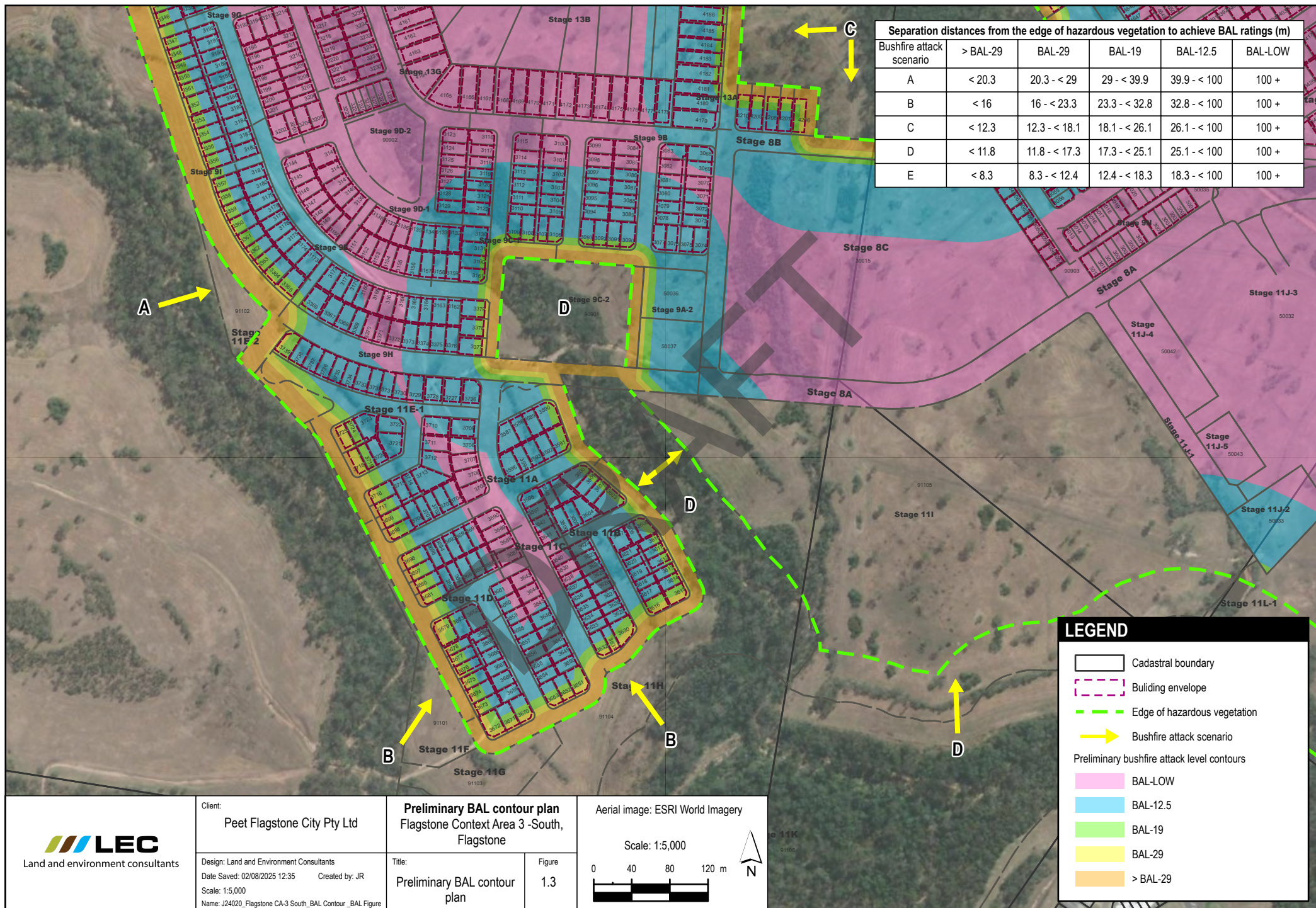












Separation distances from the edge of hazardous vegetation to achieve BAL ratings (m)					
Bushfire attack scenario	> BAL-29	BAL-29	BAL-19	BAL-12.5	BAL-LOW
A	< 20.3	20.3 - < 29	29 - < 39.9	39.9 - < 100	100 +
B	< 16	16 - < 23.3	23.3 - < 32.8	32.8 - < 100	100 +
C	< 12.3	12.3 - < 18.1	18.1 - < 26.1	26.1 - < 100	100 +
D	< 11.8	11.8 - < 17.3	17.3 - < 25.1	25.1 - < 100	100 +
E	< 8.3	8.3 - < 12.4	12.4 - < 18.3	18.3 - < 100	100 +

**LEGEND**

Cadastral boundary

Building envelope

Edge of hazardous vegetation

Bushfire attack scenario

Preliminary bushfire attack level contours


BAL-LOW

BAL-12.5

BAL-19

BAL-29

> BAL-29

**LEC**

Land and environment consultants

Client:  
Peet Flagstone City Pty Ltd

Design: Land and Environment Consultants  
Date Saved: 02/08/2025 12:35  
Scale: 1:5,000  
Name: J24020\_Flagstone CA-3 South\_BAL Contour\_BAL Figure

**Preliminary BAL contour plan**  
Flagstone Context Area 3 -South,  
Flagstone


Title:  
Preliminary BAL contour plan

Figure  
1.3

Aerial image: ESRI World Imagery

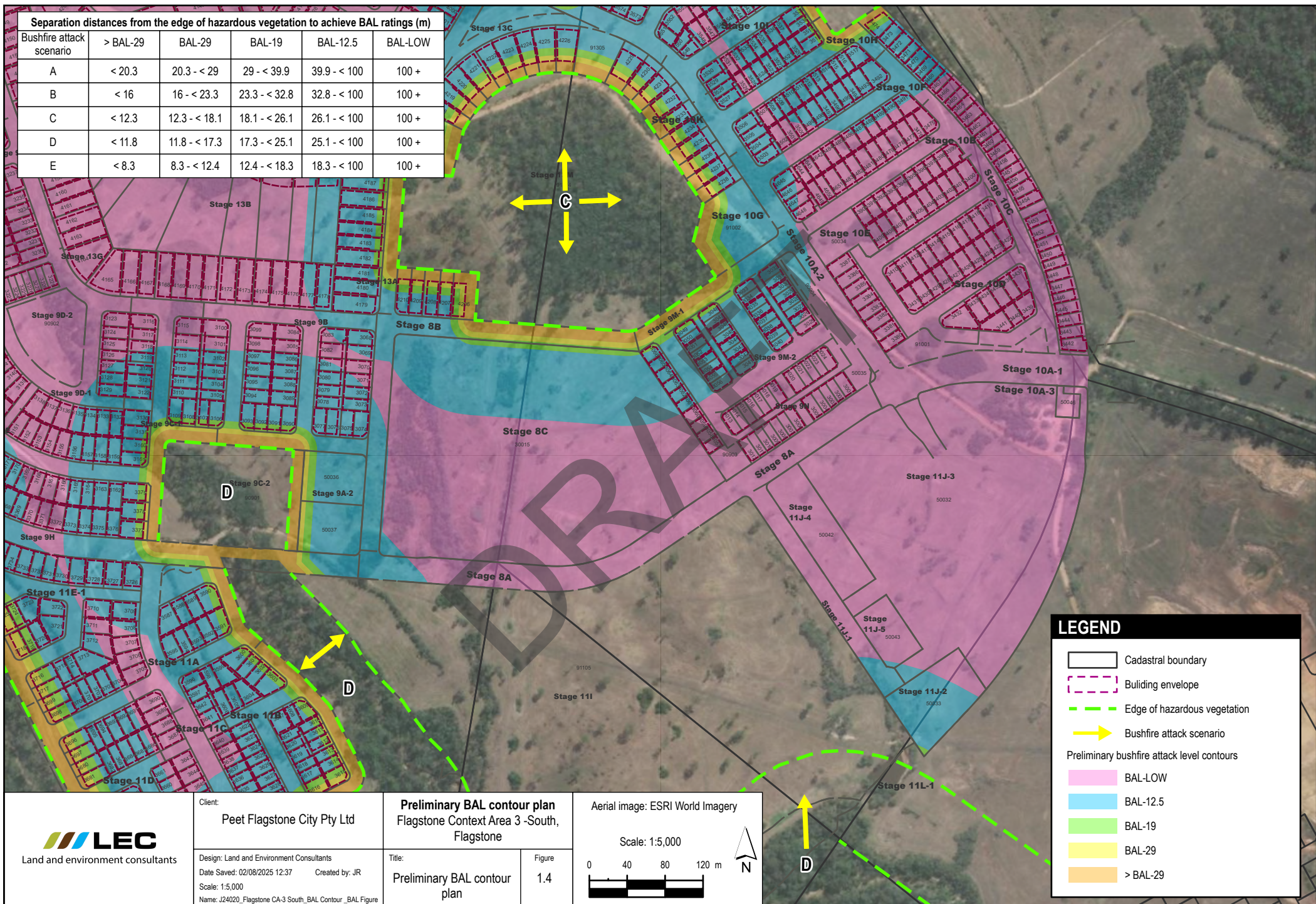
Scale: 1:5,000

04080120 m



© Land and Environment Consultants. While every care is taken to ensure the accuracy of data, LEC makes no representation or warranties about its accuracy, reliability, completeness or suitability for any particular purpose and disclaims all responsibility and all liability in negligence for all expenses, losses, damages (including indirect consequential damage) and cost which might be incurred as a result of the data being inaccurate or incomplete in any way and for any reason.





## BAL rating and BAL construction requirements for the proposed residential allotments

Lot number	BAL rating <sup>1</sup>	AS 3959-2018 construction requirements <sup>1</sup>
3000	BAL-LOW	There is insufficient risk to warrant specific construction requirements
3001	BAL-LOW	There is insufficient risk to warrant specific construction requirements
3002	BAL-LOW	There is insufficient risk to warrant specific construction requirements
3003	BAL-LOW	There is insufficient risk to warrant specific construction requirements
3004	BAL-LOW	There is insufficient risk to warrant specific construction requirements
3005	BAL-LOW	There is insufficient risk to warrant specific construction requirements
3006	BAL-LOW	There is insufficient risk to warrant specific construction requirements
3007	BAL-LOW	There is insufficient risk to warrant specific construction requirements
3008	BAL-LOW	There is insufficient risk to warrant specific construction requirements
3009	BAL-LOW	There is insufficient risk to warrant specific construction requirements
3010	BAL-LOW	There is insufficient risk to warrant specific construction requirements
3011	BAL-LOW	There is insufficient risk to warrant specific construction requirements
3012	BAL-LOW	There is insufficient risk to warrant specific construction requirements
3013	BAL-LOW	There is insufficient risk to warrant specific construction requirements
3014	BAL-LOW	There is insufficient risk to warrant specific construction requirements
3015	BAL-LOW	There is insufficient risk to warrant specific construction requirements
3016	BAL-LOW	There is insufficient risk to warrant specific construction requirements
3017	BAL-LOW	There is insufficient risk to warrant specific construction requirements
3018	BAL-LOW	There is insufficient risk to warrant specific construction requirements
3019	BAL-LOW	There is insufficient risk to warrant specific construction requirements
3020	BAL-LOW	There is insufficient risk to warrant specific construction requirements
3021	BAL-LOW	There is insufficient risk to warrant specific construction requirements

**Notes** 1 BAL rating and BAL construction requirements are only relevant to *Overall Plan of Subdivision* - plan reference 110056-639, revision number D, dated 7 July 2025.  
2 This residential allotment has an asset protection zone which prevents residential dwellings and structures from being located within in the part of the allotment which exceeds a BAL rating of BAL-29.

Lot number	BAL rating <sup>1</sup>	AS 3959-2018 construction requirements <sup>1</sup>
3022	BAL-LOW	There is insufficient risk to warrant specific construction requirements
3023	BAL-LOW	There is insufficient risk to warrant specific construction requirements
3024	BAL-LOW	There is insufficient risk to warrant specific construction requirements
3025	BAL-12.5	Sections 3 and 5
3026	BAL-12.5	Sections 3 and 5
3027	BAL-12.5	Sections 3 and 5
3028	BAL-12.5	Sections 3 and 5
3029	BAL-12.5	Sections 3 and 5
3030	BAL-12.5	Sections 3 and 5
3031	BAL-12.5	Sections 3 and 5
3032	BAL-12.5	Sections 3 and 5
3033	BAL-19	Sections 3 and 6
3034	BAL-12.5	Sections 3 and 5
3035	BAL-12.5	Sections 3 and 5
3036	BAL-12.5	Sections 3 and 5
3037	BAL-12.5	Sections 3 and 5
3038	BAL-12.5	Sections 3 and 5
3039	BAL-12.5	Sections 3 and 5
3040	BAL-12.5	Sections 3 and 5
3041	BAL-12.5	Sections 3 and 5
3042	BAL-12.5	Sections 3 and 5
3043	BAL-12.5	Sections 3 and 5
3044	BAL-12.5	Sections 3 and 5
3045	BAL-12.5	Sections 3 and 5
3046	BAL-12.5	Sections 3 and 5
3047	BAL-12.5	Sections 3 and 5
3048	BAL-19	Sections 3 and 6
3049	BAL-19	Sections 3 and 6
3050	BAL-12.5	Sections 3 and 5
3051	BAL-12.5	Sections 3 and 5
3052	BAL-12.5	Sections 3 and 5
3053	BAL-12.5	Sections 3 and 5
3054	BAL-12.5	Sections 3 and 5
3055	BAL-12.5	Sections 3 and 5
3056	BAL-12.5	Sections 3 and 5

**Notes** 1 BAL rating and BAL construction requirements are only relevant to *Overall Plan of Subdivision* - plan reference 110056-639, revision number D, dated 7 July 2025.

2 This residential allotment has an asset protection zone which prevents residential dwellings and structures from being located within in the part of the allotment which exceeds a BAL rating of BAL-29.



Lot number	BAL rating <sup>1</sup>	AS 3959-2018 construction requirements <sup>1</sup>
3057	BAL-LOW	There is insufficient risk to warrant specific construction requirements
3058	BAL-LOW	There is insufficient risk to warrant specific construction requirements
3059	BAL-LOW	There is insufficient risk to warrant specific construction requirements
3060	BAL-LOW	There is insufficient risk to warrant specific construction requirements
3061	BAL-12.5	Sections 3 and 5
3062	BAL-12.5	Sections 3 and 5
3063	BAL-12.5	Sections 3 and 5
3064	BAL-12.5	Sections 3 and 5
3065	BAL-12.5	Sections 3 and 5
3066	BAL-19	Sections 3 and 6
3067	No allotment	-
3068	BAL-12.5	Sections 3 and 5
3069	BAL-12.5	Sections 3 and 5
3070	BAL-LOW	There is insufficient risk to warrant specific construction requirements
3071	BAL-12.5	Sections 3 and 5
3072	BAL-12.5	Sections 3 and 5
3073	BAL-12.5	Sections 3 and 5
3074	BAL-12.5	Sections 3 and 5
3075	BAL-12.5	Sections 3 and 5
3076	BAL-12.5	Sections 3 and 5
3077	BAL-12.5	Sections 3 and 5
3078	BAL-12.5	Sections 3 and 5
3079	BAL-12.5	Sections 3 and 5
3080	BAL-12.5	Sections 3 and 5
3081	BAL-12.5	Sections 3 and 5
3082	BAL-LOW	There is insufficient risk to warrant specific construction requirements
3083	BAL-12.5	Sections 3 and 5
3084	BAL-LOW	There is insufficient risk to warrant specific construction requirements
3085	BAL-LOW	There is insufficient risk to warrant specific construction requirements
3086	BAL-12.5	Sections 3 and 5
3087	BAL-12.5	Sections 3 and 5
3088	BAL-12.5	Sections 3 and 5

**Notes** 1 BAL rating and BAL construction requirements are only relevant to *Overall Plan of Subdivision* - plan reference 110056-639, revision number D, dated 7 July 2025.

2 This residential allotment has an asset protection zone which prevents residential dwellings and structures from being located within in the part of the allotment which exceeds a BAL rating of BAL-29.



Lot number	BAL rating <sup>1</sup>	AS 3959-2018 construction requirements <sup>1</sup>
3089	BAL-12.5	Sections 3 and 5
3090	BAL-19	Sections 3 and 6
3091	BAL-19	Sections 3 and 6
3092	BAL-19	Sections 3 and 6
3093	BAL-19	Sections 3 and 6
3094	BAL-12.5	Sections 3 and 5
3095	BAL-12.5	Sections 3 and 5
3096	BAL-12.5	Sections 3 and 5
3097	BAL-12.5	Sections 3 and 5
3098	BAL-LOW	There is insufficient risk to warrant specific construction requirements
3099	BAL-LOW	There is insufficient risk to warrant specific construction requirements
3100	BAL-LOW	There is insufficient risk to warrant specific construction requirements
3101	BAL-12.5	Sections 3 and 5
3102	BAL-12.5	Sections 3 and 5
3103	BAL-12.5	Sections 3 and 5
3104	BAL-12.5	Sections 3 and 5
3105	BAL-12.5	Sections 3 and 5
3106	BAL-19	Sections 3 and 6
3107	BAL-19	Sections 3 and 6
3108	BAL-19	Sections 3 and 6
3109	BAL-19	Sections 3 and 6
3110	BAL-12.5	Sections 3 and 5
3111	BAL-12.5	Sections 3 and 5
3112	BAL-12.5	Sections 3 and 5
3113	BAL-12.5	Sections 3 and 5
3114	BAL-12.5	Sections 3 and 5
3115	BAL-LOW	There is insufficient risk to warrant specific construction requirements
3116	BAL-LOW	There is insufficient risk to warrant specific construction requirements
3117	BAL-LOW	There is insufficient risk to warrant specific construction requirements
3118	BAL-12.5	Sections 3 and 5
3119	BAL-12.5	Sections 3 and 5
3120	BAL-12.5	Sections 3 and 5
3121	BAL-12.5	Sections 3 and 5

**Notes** 1 BAL rating and BAL construction requirements are only relevant to *Overall Plan of Subdivision* - plan reference 110056-639, revision number D, dated 7 July 2025.

2 This residential allotment has an asset protection zone which prevents residential dwellings and structures from being located within in the part of the allotment which exceeds a BAL rating of BAL-29.



Lot number	BAL rating <sup>1</sup>	AS 3959-2018 construction requirements <sup>1</sup>
3122	BAL-12.5	Sections 3 and 5
3123	BAL-LOW	There is insufficient risk to warrant specific construction requirements
3124	BAL-LOW	There is insufficient risk to warrant specific construction requirements
3125	BAL-LOW	There is insufficient risk to warrant specific construction requirements
3126	BAL-12.5	Sections 3 and 5
3127	BAL-12.5	Sections 3 and 5
3128	BAL-12.5	Sections 3 and 5
3129	BAL-12.5	Sections 3 and 5
3130	BAL-12.5	Sections 3 and 5
3131	BAL-19	Sections 3 and 6
3132	BAL-12.5	Sections 3 and 5
3133	BAL-12.5	Sections 3 and 5
3134	BAL-12.5	Sections 3 and 5
3135	BAL-12.5	Sections 3 and 5
3136	BAL-LOW	There is insufficient risk to warrant specific construction requirements
3137	BAL-LOW	There is insufficient risk to warrant specific construction requirements
3138	BAL-LOW	There is insufficient risk to warrant specific construction requirements
3139	BAL-LOW	There is insufficient risk to warrant specific construction requirements
3140	BAL-LOW	There is insufficient risk to warrant specific construction requirements
3141	BAL-LOW	There is insufficient risk to warrant specific construction requirements
3142	BAL-LOW	There is insufficient risk to warrant specific construction requirements
3143	BAL-LOW	There is insufficient risk to warrant specific construction requirements
3144	BAL-LOW	There is insufficient risk to warrant specific construction requirements
3145	BAL-LOW	There is insufficient risk to warrant specific construction requirements
3146	BAL-LOW	There is insufficient risk to warrant specific construction requirements
3147	BAL-LOW	There is insufficient risk to warrant specific construction requirements
3148	BAL-LOW	There is insufficient risk to warrant specific construction requirements

**Notes** 1 BAL rating and BAL construction requirements are only relevant to *Overall Plan of Subdivision* - plan reference 110056-639, revision number D, dated 7 July 2025.  
2 This residential allotment has an asset protection zone which prevents residential dwellings and structures from being located within in the part of the allotment which exceeds a BAL rating of BAL-29.



Lot number	BAL rating <sup>1</sup>	AS 3959-2018 construction requirements <sup>1</sup>
3149	BAL-LOW	There is insufficient risk to warrant specific construction requirements
3150	BAL-LOW	There is insufficient risk to warrant specific construction requirements
3151	BAL-LOW	There is insufficient risk to warrant specific construction requirements
3152	BAL-LOW	There is insufficient risk to warrant specific construction requirements
3153	BAL-LOW	There is insufficient risk to warrant specific construction requirements
3154	BAL-LOW	There is insufficient risk to warrant specific construction requirements
3155	BAL-LOW	There is insufficient risk to warrant specific construction requirements
3156	BAL-12.5	Sections 3 and 5
3157	BAL-12.5	Sections 3 and 5
3158	BAL-12.5	Sections 3 and 5
3159	BAL-12.5	Sections 3 and 5
3160	BAL-19	Sections 3 and 6
3161	BAL-19	Sections 3 and 6
3162	BAL-12.5	Sections 3 and 5
3163	BAL-12.5	Sections 3 and 5
3164	BAL-12.5	Sections 3 and 5
3165	BAL-12.5	Sections 3 and 5
3166	BAL-12.5	Sections 3 and 5
3167	BAL-LOW	There is insufficient risk to warrant specific construction requirements
3168	BAL-LOW	There is insufficient risk to warrant specific construction requirements
3169	BAL-12.5	Sections 3 and 5
3170	BAL-12.5	Sections 3 and 5
3171	BAL-12.5	Sections 3 and 5
3172	BAL-12.5	Sections 3 and 5
3173	BAL-12.5	Sections 3 and 5
3174	BAL-12.5	Sections 3 and 5
3175	BAL-12.5	Sections 3 and 5
3176	BAL-12.5	Sections 3 and 5
3177	BAL-12.5	Sections 3 and 5
3178	BAL-12.5	Sections 3 and 5
3179	BAL-12.5	Sections 3 and 5

**Notes** 1 BAL rating and BAL construction requirements are only relevant to *Overall Plan of Subdivision* - plan reference 110056-639, revision number D, dated 7 July 2025.

2 This residential allotment has an asset protection zone which prevents residential dwellings and structures from being located within in the part of the allotment which exceeds a BAL rating of BAL-29.

Lot number	BAL rating <sup>1</sup>	AS 3959-2018 construction requirements <sup>1</sup>
3180	BAL-12.5	Sections 3 and 5
3181	BAL-12.5	Sections 3 and 5
3182	BAL-12.5	Sections 3 and 5
3183	BAL-12.5	Sections 3 and 5
3184	BAL-12.5	Sections 3 and 5
3185	BAL-12.5	Sections 3 and 5
3186	BAL-12.5	Sections 3 and 5
3187	BAL-12.5	Sections 3 and 5
3188	BAL-12.5	Sections 3 and 5
3189	BAL-12.5	Sections 3 and 5
3190	BAL-12.5	Sections 3 and 5
3191	BAL-12.5	Sections 3 and 5
3192	BAL-12.5	Sections 3 and 5
3193	BAL-LOW	There is insufficient risk to warrant specific construction requirements
3194	BAL-LOW	There is insufficient risk to warrant specific construction requirements
3195	BAL-LOW	There is insufficient risk to warrant specific construction requirements
3196	BAL-LOW	There is insufficient risk to warrant specific construction requirements
3197	BAL-LOW	There is insufficient risk to warrant specific construction requirements
3198	BAL-LOW	There is insufficient risk to warrant specific construction requirements
3199	BAL-LOW	There is insufficient risk to warrant specific construction requirements
3200	BAL-LOW	There is insufficient risk to warrant specific construction requirements
3201	BAL-LOW	There is insufficient risk to warrant specific construction requirements
3202	BAL-LOW	There is insufficient risk to warrant specific construction requirements
3203	BAL-LOW	There is insufficient risk to warrant specific construction requirements
3204	BAL-LOW	There is insufficient risk to warrant specific construction requirements
3205	BAL-LOW	There is insufficient risk to warrant specific construction requirements
3206	BAL-LOW	There is insufficient risk to warrant specific construction requirements

**Notes** 1 BAL rating and BAL construction requirements are only relevant to *Overall Plan of Subdivision* - plan reference 110056-639, revision number D, dated 7 July 2025.  
2 This residential allotment has an asset protection zone which prevents residential dwellings and structures from being located within in the part of the allotment which exceeds a BAL rating of BAL-29.



Lot number	BAL rating <sup>1</sup>	AS 3959-2018 construction requirements <sup>1</sup>
3207	BAL-LOW	There is insufficient risk to warrant specific construction requirements
3208	BAL-LOW	There is insufficient risk to warrant specific construction requirements
3209	BAL-LOW	There is insufficient risk to warrant specific construction requirements
3210	BAL-LOW	There is insufficient risk to warrant specific construction requirements
3211	BAL-LOW	There is insufficient risk to warrant specific construction requirements
3212	BAL-LOW	There is insufficient risk to warrant specific construction requirements
3213	BAL-LOW	There is insufficient risk to warrant specific construction requirements
3214	BAL-LOW	There is insufficient risk to warrant specific construction requirements
3215	BAL-LOW	There is insufficient risk to warrant specific construction requirements
3216	BAL-LOW	There is insufficient risk to warrant specific construction requirements
3217	BAL-LOW	There is insufficient risk to warrant specific construction requirements
3218	BAL-LOW	There is insufficient risk to warrant specific construction requirements
3219	BAL-LOW	There is insufficient risk to warrant specific construction requirements
3220	BAL-LOW	There is insufficient risk to warrant specific construction requirements
3221	BAL-LOW	There is insufficient risk to warrant specific construction requirements
3222	BAL-LOW	There is insufficient risk to warrant specific construction requirements
3223	BAL-LOW	There is insufficient risk to warrant specific construction requirements
3224	BAL-LOW	There is insufficient risk to warrant specific construction requirements
3225	BAL-LOW	There is insufficient risk to warrant specific construction requirements
3226	BAL-LOW	There is insufficient risk to warrant specific construction requirements
3227	BAL-LOW	There is insufficient risk to warrant specific construction requirements
3228	BAL-LOW	There is insufficient risk to warrant specific construction requirements

**Notes** 1 BAL rating and BAL construction requirements are only relevant to *Overall Plan of Subdivision* - plan reference 110056-639, revision number D, dated 7 July 2025.  
2 This residential allotment has an asset protection zone which prevents residential dwellings and structures from being located within in the part of the allotment which exceeds a BAL rating of BAL-29.

Lot number	BAL rating <sup>1</sup>	AS 3959-2018 construction requirements <sup>1</sup>
3229	BAL-LOW	There is insufficient risk to warrant specific construction requirements
3230	BAL-LOW	There is insufficient risk to warrant specific construction requirements
3231	BAL-LOW	There is insufficient risk to warrant specific construction requirements
3232	BAL-LOW	There is insufficient risk to warrant specific construction requirements
3233	BAL-LOW	There is insufficient risk to warrant specific construction requirements
3234	BAL-LOW	There is insufficient risk to warrant specific construction requirements
3235	BAL-LOW	There is insufficient risk to warrant specific construction requirements
3236	BAL-LOW	There is insufficient risk to warrant specific construction requirements
3237	BAL-LOW	There is insufficient risk to warrant specific construction requirements
3238	BAL-12.5	Sections 3 and 5
3239	BAL-12.5	Sections 3 and 5
3240	BAL-12.5	Sections 3 and 5
3241	BAL-12.5	Sections 3 and 5
3242	BAL-LOW	There is insufficient risk to warrant specific construction requirements
3243	BAL-LOW	There is insufficient risk to warrant specific construction requirements
3244	BAL-LOW	There is insufficient risk to warrant specific construction requirements
3245	BAL-LOW	There is insufficient risk to warrant specific construction requirements
3246	BAL-LOW	There is insufficient risk to warrant specific construction requirements
3247	BAL-LOW	There is insufficient risk to warrant specific construction requirements
3248	BAL-LOW	There is insufficient risk to warrant specific construction requirements
3249	BAL-LOW	There is insufficient risk to warrant specific construction requirements
3250	BAL-LOW	There is insufficient risk to warrant specific construction requirements
3251	BAL-LOW	There is insufficient risk to warrant specific construction requirements
3252	BAL-LOW	There is insufficient risk to warrant specific construction requirements

**Notes** 1 BAL rating and BAL construction requirements are only relevant to *Overall Plan of Subdivision* - plan reference 110056-639, revision number D, dated 7 July 2025.  
2 This residential allotment has an asset protection zone which prevents residential dwellings and structures from being located within in the part of the allotment which exceeds a BAL rating of BAL-29.



Lot number	BAL rating <sup>1</sup>	AS 3959-2018 construction requirements <sup>1</sup>
3253	BAL-LOW	There is insufficient risk to warrant specific construction requirements
3254	BAL-LOW	There is insufficient risk to warrant specific construction requirements
3255	BAL-LOW	There is insufficient risk to warrant specific construction requirements
3256	BAL-LOW	There is insufficient risk to warrant specific construction requirements
3257	BAL-LOW	There is insufficient risk to warrant specific construction requirements
3258	BAL-LOW	There is insufficient risk to warrant specific construction requirements
3259	BAL-LOW	There is insufficient risk to warrant specific construction requirements
3260	BAL-LOW	There is insufficient risk to warrant specific construction requirements
3261	BAL-12.5	Sections 3 and 5
3262	BAL-12.5	Sections 3 and 5
3263	BAL-12.5	Sections 3 and 5
3264	BAL-12.5	Sections 3 and 5
3265	BAL-12.5	Sections 3 and 5
3266	BAL-12.5	Sections 3 and 5
3267	BAL-12.5	Sections 3 and 5
3268	BAL-12.5	Sections 3 and 5
3269	BAL-12.5	Sections 3 and 5
3270	BAL-12.5	Sections 3 and 5
3271	BAL-12.5	Sections 3 and 5
3272	BAL-12.5	Sections 3 and 5
3273	BAL-12.5	Sections 3 and 5
3274	BAL-12.5	Sections 3 and 5
3275	BAL-12.5	Sections 3 and 5
3276	BAL-LOW	There is insufficient risk to warrant specific construction requirements
3277	BAL-LOW	There is insufficient risk to warrant specific construction requirements
3278	BAL-LOW	There is insufficient risk to warrant specific construction requirements
3279	BAL-LOW	There is insufficient risk to warrant specific construction requirements
3280	BAL-LOW	There is insufficient risk to warrant specific construction requirements

**Notes** 1 BAL rating and BAL construction requirements are only relevant to *Overall Plan of Subdivision* - plan reference 110056-639, revision number D, dated 7 July 2025.  
2 This residential allotment has an asset protection zone which prevents residential dwellings and structures from being located within in the part of the allotment which exceeds a BAL rating of BAL-29.

Lot number	BAL rating <sup>1</sup>	AS 3959-2018 construction requirements <sup>1</sup>
3281	BAL-LOW	There is insufficient risk to warrant specific construction requirements
3282	BAL-LOW	There is insufficient risk to warrant specific construction requirements
3283	BAL-LOW	There is insufficient risk to warrant specific construction requirements
3284	BAL-LOW	There is insufficient risk to warrant specific construction requirements
3285	BAL-LOW	There is insufficient risk to warrant specific construction requirements
3286	BAL-LOW	There is insufficient risk to warrant specific construction requirements
3287	BAL-LOW	There is insufficient risk to warrant specific construction requirements
3288	BAL-LOW	There is insufficient risk to warrant specific construction requirements
3289	BAL-LOW	There is insufficient risk to warrant specific construction requirements
3290	BAL-LOW	There is insufficient risk to warrant specific construction requirements
3291	BAL-LOW	There is insufficient risk to warrant specific construction requirements
3292	BAL-LOW	There is insufficient risk to warrant specific construction requirements
3293	BAL-LOW	There is insufficient risk to warrant specific construction requirements
3294	BAL-LOW	There is insufficient risk to warrant specific construction requirements
3295	BAL-LOW	There is insufficient risk to warrant specific construction requirements
3296	BAL-LOW	There is insufficient risk to warrant specific construction requirements
3297	BAL-LOW	There is insufficient risk to warrant specific construction requirements
3298	BAL-LOW	There is insufficient risk to warrant specific construction requirements
3299	BAL-LOW	There is insufficient risk to warrant specific construction requirements
3300	BAL-LOW	There is insufficient risk to warrant specific construction requirements
3301	BAL-LOW	There is insufficient risk to warrant specific construction requirements
3302	BAL-LOW	There is insufficient risk to warrant specific construction requirements

**Notes** 1 BAL rating and BAL construction requirements are only relevant to *Overall Plan of Subdivision* - plan reference 110056-639, revision number D, dated 7 July 2025.  
2 This residential allotment has an asset protection zone which prevents residential dwellings and structures from being located within in the part of the allotment which exceeds a BAL rating of BAL-29.



Lot number	BAL rating <sup>1</sup>	AS 3959-2018 construction requirements <sup>1</sup>
3303	BAL-LOW	There is insufficient risk to warrant specific construction requirements
3304	BAL-LOW	There is insufficient risk to warrant specific construction requirements
3305	BAL-LOW	There is insufficient risk to warrant specific construction requirements
3306	BAL-LOW	There is insufficient risk to warrant specific construction requirements
3307	BAL-LOW	There is insufficient risk to warrant specific construction requirements
3308	BAL-LOW	There is insufficient risk to warrant specific construction requirements
3309	BAL-LOW	There is insufficient risk to warrant specific construction requirements
3310	BAL-LOW	There is insufficient risk to warrant specific construction requirements
3311	BAL-LOW	There is insufficient risk to warrant specific construction requirements
3312	BAL-LOW	There is insufficient risk to warrant specific construction requirements
3313	BAL-LOW	There is insufficient risk to warrant specific construction requirements
3314	BAL-LOW	There is insufficient risk to warrant specific construction requirements
3315	BAL-LOW	There is insufficient risk to warrant specific construction requirements
3316	BAL-LOW	There is insufficient risk to warrant specific construction requirements
3317	BAL-LOW	There is insufficient risk to warrant specific construction requirements
3318	BAL-LOW	There is insufficient risk to warrant specific construction requirements
3319	BAL-LOW	There is insufficient risk to warrant specific construction requirements
3320	BAL-LOW	There is insufficient risk to warrant specific construction requirements
3321	BAL-LOW	There is insufficient risk to warrant specific construction requirements
3322	BAL-LOW	There is insufficient risk to warrant specific construction requirements
3323	BAL-LOW	There is insufficient risk to warrant specific construction requirements
3324	BAL-LOW	There is insufficient risk to warrant specific construction requirements

**Notes** 1 BAL rating and BAL construction requirements are only relevant to *Overall Plan of Subdivision* - plan reference 110056-639, revision number D, dated 7 July 2025.  
2 This residential allotment has an asset protection zone which prevents residential dwellings and structures from being located within in the part of the allotment which exceeds a BAL rating of BAL-29.

Lot number	BAL rating <sup>1</sup>	AS 3959-2018 construction requirements <sup>1</sup>
3325	BAL-LOW	There is insufficient risk to warrant specific construction requirements
3326	BAL-LOW	There is insufficient risk to warrant specific construction requirements
3327	BAL-12.5	Sections 3 and 5
3328	BAL-12.5	Sections 3 and 5
3329	BAL-12.5	Sections 3 and 5
3330	BAL-12.5	Sections 3 and 5
3331	BAL-12.5	Sections 3 and 5
3332	BAL-12.5	Sections 3 and 5
3333	BAL-12.5	Sections 3 and 5
3334	BAL-12.5	Sections 3 and 5
3335	BAL-12.5	Sections 3 and 5
3336	BAL-12.5	Sections 3 and 5
3337	BAL-12.5	Sections 3 and 5
3338	BAL-12.5	Sections 3 and 5
3339	BAL-12.5	Sections 3 and 5
3340	BAL-12.5	Sections 3 and 5
3341	BAL-12.5	Sections 3 and 5
3342	BAL-19	Sections 3 and 6
3343	BAL-29	Sections 3 and 7
3344	BAL-12.5	Sections 3 and 5
3345	BAL-29	Sections 3 and 7
3346	BAL-29	Sections 3 and 7
3347	BAL-29	Sections 3 and 7
3348	BAL-29	Sections 3 and 7
3349	BAL-29	Sections 3 and 7
3350	BAL-29	Sections 3 and 7
3351	BAL-29	Sections 3 and 7
3352	BAL-29	Sections 3 and 7
3353	BAL-29	Sections 3 and 7
3354	BAL-29	Sections 3 and 7
3355	BAL-29	Sections 3 and 7
3356	BAL-29	Sections 3 and 7
3357	BAL-29	Sections 3 and 7
3358	BAL-29	Sections 3 and 7
3359	BAL-29	Sections 3 and 7
3360	BAL-29	Sections 3 and 7

**Notes** 1 BAL rating and BAL construction requirements are only relevant to *Overall Plan of Subdivision* - plan reference 110056-639, revision number D, dated 7 July 2025.

2 This residential allotment has an asset protection zone which prevents residential dwellings and structures from being located within in the part of the allotment which exceeds a BAL rating of BAL-29.

Lot number	BAL rating <sup>1</sup>	AS 3959-2018 construction requirements <sup>1</sup>
3361	BAL-29	Sections 3 and 7
3362	BAL-29	Sections 3 and 7
3363	BAL-29	Sections 3 and 7
3364	BAL-29	Sections 3 and 7
3365	BAL-29	Sections 3 and 7
3366	BAL-19	Sections 3 and 6
3367	BAL-12.5	Sections 3 and 5
3368	BAL-12.5	Sections 3 and 5
3369	BAL-12.5	Sections 3 and 5
3370	BAL-12.5	Sections 3 and 5
3371	BAL-LOW	There is insufficient risk to warrant specific construction requirements
3372	BAL-LOW	There is insufficient risk to warrant specific construction requirements
3373	BAL-12.5	Sections 3 and 5
3374	BAL-12.5	Sections 3 and 5
3375	BAL-12.5	Sections 3 and 5
3376	BAL-12.5	Sections 3 and 5
3377	BAL-19	Sections 3 and 6
3378	BAL-19	Sections 3 and 6
3379	BAL-19	Sections 3 and 6
3380	BAL-LOW	There is insufficient risk to warrant specific construction requirements
3381	BAL-LOW	There is insufficient risk to warrant specific construction requirements
3382	BAL-LOW	There is insufficient risk to warrant specific construction requirements
3383	BAL-LOW	There is insufficient risk to warrant specific construction requirements
3384	BAL-LOW	There is insufficient risk to warrant specific construction requirements
3385	BAL-LOW	There is insufficient risk to warrant specific construction requirements
3386	BAL-LOW	There is insufficient risk to warrant specific construction requirements
3387	BAL-LOW	There is insufficient risk to warrant specific construction requirements
3388	No allotment	-
3389	No allotment	-
3390	BAL-LOW	There is insufficient risk to warrant specific construction requirements

**Notes** 1 BAL rating and BAL construction requirements are only relevant to *Overall Plan of Subdivision* - plan reference 110056-639, revision number D, dated 7 July 2025.

2 This residential allotment has an asset protection zone which prevents residential dwellings and structures from being located within in the part of the allotment which exceeds a BAL rating of BAL-29.



Lot number	BAL rating <sup>1</sup>	AS 3959-2018 construction requirements <sup>1</sup>
3391	BAL-LOW	There is insufficient risk to warrant specific construction requirements
3392	BAL-LOW	There is insufficient risk to warrant specific construction requirements
3393	BAL-LOW	There is insufficient risk to warrant specific construction requirements
3394	BAL-LOW	There is insufficient risk to warrant specific construction requirements
3395	BAL-LOW	There is insufficient risk to warrant specific construction requirements
3396	BAL-LOW	There is insufficient risk to warrant specific construction requirements
3397	BAL-LOW	There is insufficient risk to warrant specific construction requirements
3398	BAL-LOW	There is insufficient risk to warrant specific construction requirements
3399	BAL-LOW	There is insufficient risk to warrant specific construction requirements
3400	BAL-LOW	There is insufficient risk to warrant specific construction requirements
3401	BAL-LOW	There is insufficient risk to warrant specific construction requirements
3402	BAL-LOW	There is insufficient risk to warrant specific construction requirements
3403	BAL-LOW	There is insufficient risk to warrant specific construction requirements
3404	BAL-LOW	There is insufficient risk to warrant specific construction requirements
3405	BAL-LOW	There is insufficient risk to warrant specific construction requirements
3406	BAL-LOW	There is insufficient risk to warrant specific construction requirements
3407	BAL-LOW	There is insufficient risk to warrant specific construction requirements
3408	BAL-LOW	There is insufficient risk to warrant specific construction requirements
3409	BAL-LOW	There is insufficient risk to warrant specific construction requirements
3410	BAL-LOW	There is insufficient risk to warrant specific construction requirements
3411	BAL-LOW	There is insufficient risk to warrant specific construction requirements
3412	BAL-LOW	There is insufficient risk to warrant specific construction requirements

**Notes** 1 BAL rating and BAL construction requirements are only relevant to *Overall Plan of Subdivision* - plan reference 110056-639, revision number D, dated 7 July 2025.  
2 This residential allotment has an asset protection zone which prevents residential dwellings and structures from being located within in the part of the allotment which exceeds a BAL rating of BAL-29.

Lot number	BAL rating <sup>1</sup>	AS 3959-2018 construction requirements <sup>1</sup>
3413	BAL-LOW	There is insufficient risk to warrant specific construction requirements
3414	BAL-LOW	There is insufficient risk to warrant specific construction requirements
3415	BAL-LOW	There is insufficient risk to warrant specific construction requirements
3416	BAL-LOW	There is insufficient risk to warrant specific construction requirements
3417	BAL-LOW	There is insufficient risk to warrant specific construction requirements
3418	BAL-LOW	There is insufficient risk to warrant specific construction requirements
3419	BAL-LOW	There is insufficient risk to warrant specific construction requirements
3420	No allotment	-
3421	No allotment	-
3422	BAL-LOW	There is insufficient risk to warrant specific construction requirements
3423	BAL-LOW	There is insufficient risk to warrant specific construction requirements
3424	BAL-LOW	There is insufficient risk to warrant specific construction requirements
3425	BAL-LOW	There is insufficient risk to warrant specific construction requirements
3426	BAL-LOW	There is insufficient risk to warrant specific construction requirements
3427	BAL-LOW	There is insufficient risk to warrant specific construction requirements
3428	BAL-LOW	There is insufficient risk to warrant specific construction requirements
3429	BAL-LOW	There is insufficient risk to warrant specific construction requirements
3430	BAL-LOW	There is insufficient risk to warrant specific construction requirements
3431	BAL-LOW	There is insufficient risk to warrant specific construction requirements
3432	BAL-LOW	There is insufficient risk to warrant specific construction requirements
3433	BAL-LOW	There is insufficient risk to warrant specific construction requirements
3434	BAL-LOW	There is insufficient risk to warrant specific construction requirements
3435	BAL-LOW	There is insufficient risk to warrant specific construction requirements

**Notes** 1 BAL rating and BAL construction requirements are only relevant to *Overall Plan of Subdivision* - plan reference 110056-639, revision number D, dated 7 July 2025.  
2 This residential allotment has an asset protection zone which prevents residential dwellings and structures from being located within in the part of the allotment which exceeds a BAL rating of BAL-29.

Lot number	BAL rating <sup>1</sup>	AS 3959-2018 construction requirements <sup>1</sup>
3436	BAL-LOW	There is insufficient risk to warrant specific construction requirements
3437	BAL-LOW	There is insufficient risk to warrant specific construction requirements
3438	BAL-29	Sections 3 and 7
3439	BAL-LOW	There is insufficient risk to warrant specific construction requirements
3440	BAL-LOW	There is insufficient risk to warrant specific construction requirements
3441	BAL-LOW	There is insufficient risk to warrant specific construction requirements
3442	BAL-LOW	There is insufficient risk to warrant specific construction requirements
3443	BAL-LOW	There is insufficient risk to warrant specific construction requirements
3444	BAL-LOW	There is insufficient risk to warrant specific construction requirements
3445	BAL-LOW	There is insufficient risk to warrant specific construction requirements
3446	BAL-LOW	There is insufficient risk to warrant specific construction requirements
3447	BAL-LOW	There is insufficient risk to warrant specific construction requirements
3448	BAL-LOW	There is insufficient risk to warrant specific construction requirements
3449	BAL-LOW	There is insufficient risk to warrant specific construction requirements
3450	BAL-LOW	There is insufficient risk to warrant specific construction requirements
3451	BAL-LOW	There is insufficient risk to warrant specific construction requirements
3452	BAL-LOW	There is insufficient risk to warrant specific construction requirements
3453	BAL-LOW	There is insufficient risk to warrant specific construction requirements
3454	BAL-LOW	There is insufficient risk to warrant specific construction requirements
3455	BAL-LOW	There is insufficient risk to warrant specific construction requirements
3456	BAL-LOW	There is insufficient risk to warrant specific construction requirements
3457	BAL-LOW	There is insufficient risk to warrant specific construction requirements
3458	BAL-LOW	There is insufficient risk to warrant specific construction requirements

**Notes** 1 BAL rating and BAL construction requirements are only relevant to *Overall Plan of Subdivision* - plan reference 110056-639, revision number D, dated 7 July 2025.  
2 This residential allotment has an asset protection zone which prevents residential dwellings and structures from being located within in the part of the allotment which exceeds a BAL rating of BAL-29.



Lot number	BAL rating <sup>1</sup>	AS 3959-2018 construction requirements <sup>1</sup>
3459	BAL-LOW	There is insufficient risk to warrant specific construction requirements
3460	BAL-LOW	There is insufficient risk to warrant specific construction requirements
3461	BAL-LOW	There is insufficient risk to warrant specific construction requirements
3462	BAL-LOW	There is insufficient risk to warrant specific construction requirements
3463	BAL-LOW	There is insufficient risk to warrant specific construction requirements
3464	BAL-LOW	There is insufficient risk to warrant specific construction requirements
3465	BAL-LOW	There is insufficient risk to warrant specific construction requirements
3466	BAL-LOW	There is insufficient risk to warrant specific construction requirements
3467	BAL-12.5	Sections 3 and 5
3468	BAL-12.5	Sections 3 and 5
3469	BAL-12.5	Sections 3 and 5
3470	BAL-12.5	Sections 3 and 5
3471	BAL-12.5	Sections 3 and 5
3472	BAL-12.5	Sections 3 and 5
3473	BAL-12.5	Sections 3 and 5
3474	BAL-29 <sup>2</sup>	Sections 3 and 7
3475	BAL-LOW	There is insufficient risk to warrant specific construction requirements
3476	BAL-LOW	There is insufficient risk to warrant specific construction requirements
3477	BAL-LOW	There is insufficient risk to warrant specific construction requirements
3478	BAL-LOW	There is insufficient risk to warrant specific construction requirements
3479	BAL-LOW	There is insufficient risk to warrant specific construction requirements
3480	BAL-LOW	There is insufficient risk to warrant specific construction requirements
3481	BAL-LOW	There is insufficient risk to warrant specific construction requirements
3482	BAL-LOW	There is insufficient risk to warrant specific construction requirements
3483	BAL-LOW	There is insufficient risk to warrant specific construction requirements

**Notes** 1 BAL rating and BAL construction requirements are only relevant to *Overall Plan of Subdivision* - plan reference 110056-639, revision number D, dated 7 July 2025.

2 This residential allotment has an asset protection zone which prevents residential dwellings and structures from being located within in the part of the allotment which exceeds a BAL rating of BAL-29.

Lot number	BAL rating <sup>1</sup>	AS 3959-2018 construction requirements <sup>1</sup>
3484	BAL-LOW	There is insufficient risk to warrant specific construction requirements
3485	BAL-LOW	There is insufficient risk to warrant specific construction requirements
3486	BAL-12.5	Sections 3 and 5
3487	BAL-12.5	Sections 3 and 5
3488	BAL-12.5	Sections 3 and 5
3489	BAL-12.5	Sections 3 and 5
3490	BAL-12.5	Sections 3 and 5
3491	BAL-12.5	Sections 3 and 5
3492	BAL-12.5	Sections 3 and 5
3493	BAL-12.5	Sections 3 and 5
3494	BAL-12.5	Sections 3 and 5
3495	BAL-12.5	Sections 3 and 5
3496	BAL-12.5	Sections 3 and 5
3497	BAL-12.5	Sections 3 and 5
3498	BAL-12.5	Sections 3 and 5
3499	BAL-12.5	Sections 3 and 5
3500	BAL-12.5	Sections 3 and 5
3501	BAL-12.5	Sections 3 and 5
3502	BAL-LOW	There is insufficient risk to warrant specific construction requirements
3503	BAL-12.5	Sections 3 and 5
3504	BAL-12.5	Sections 3 and 5
3505	BAL-12.5	Sections 3 and 5
3506	BAL-12.5	Sections 3 and 5
3507	BAL-LOW	There is insufficient risk to warrant specific construction requirements
3508	BAL-12.5	Sections 3 and 5
3509	BAL-12.5	Sections 3 and 5
3510	BAL-12.5	Sections 3 and 5
3511	BAL-12.5	Sections 3 and 5
3512	BAL-12.5	Sections 3 and 5
3513	BAL-12.5	Sections 3 and 5
3514	BAL-12.5	Sections 3 and 5
3515	BAL-12.5	Sections 3 and 5
3516	BAL-12.5	Sections 3 and 5
3517	BAL-12.5	Sections 3 and 5
3518	BAL-19	Sections 3 and 6

**Notes** 1 BAL rating and BAL construction requirements are only relevant to *Overall Plan of Subdivision* - plan reference 110056-639, revision number D, dated 7 July 2025.

2 This residential allotment has an asset protection zone which prevents residential dwellings and structures from being located within in the part of the allotment which exceeds a BAL rating of BAL-29.

Lot number	BAL rating <sup>1</sup>	AS 3959-2018 construction requirements <sup>1</sup>
3519	BAL-19	Sections 3 and 6
3520	BAL-12.5	Sections 3 and 5
3521	BAL-12.5	Sections 3 and 5
3522	BAL-12.5	Sections 3 and 5
3523	BAL-12.5	Sections 3 and 5
3524	BAL-12.5	Sections 3 and 5
3525	BAL-12.5	Sections 3 and 5
3526	BAL-LOW	There is insufficient risk to warrant specific construction requirements
3527	BAL-12.5	Sections 3 and 5
3528	BAL-12.5	Sections 3 and 5
3529	BAL-12.5	Sections 3 and 5
3530	BAL-12.5	Sections 3 and 5
3531	BAL-LOW	There is insufficient risk to warrant specific construction requirements
3532	BAL-12.5	Sections 3 and 5
3533	BAL-12.5	Sections 3 and 5
3534	BAL-12.5	Sections 3 and 5
3535	BAL-12.5	Sections 3 and 5
3536	BAL-12.5	Sections 3 and 5
3537	BAL-12.5	Sections 3 and 5
3538	BAL-19	Sections 3 and 6
3539	BAL-19	Sections 3 and 6
3540	BAL-19	Sections 3 and 6
3541	BAL-12.5	Sections 3 and 5
3542	BAL-12.5	Sections 3 and 5
3543	BAL-12.5	Sections 3 and 5
3544	BAL-12.5	Sections 3 and 5
3545	BAL-12.5	Sections 3 and 5
3546	BAL-12.5	Sections 3 and 5
3547	BAL-LOW	There is insufficient risk to warrant specific construction requirements
3548	BAL-12.5	Sections 3 and 5
3549	BAL-12.5	Sections 3 and 5
3550	BAL-12.5	Sections 3 and 5
3551	BAL-12.5	Sections 3 and 5
3552	BAL-12.5	Sections 3 and 5
3553	BAL-12.5	Sections 3 and 5

**Notes** 1 BAL rating and BAL construction requirements are only relevant to *Overall Plan of Subdivision* - plan reference 110056-639, revision number D, dated 7 July 2025.

2 This residential allotment has an asset protection zone which prevents residential dwellings and structures from being located within in the part of the allotment which exceeds a BAL rating of BAL-29.



Lot number	BAL rating <sup>1</sup>	AS 3959-2018 construction requirements <sup>1</sup>
3554	BAL-12.5	Sections 3 and 5
3555	BAL-12.5	Sections 3 and 5
3556	BAL-12.5	Sections 3 and 5
3557	BAL-12.5	Sections 3 and 5
3558	BAL-12.5	Sections 3 and 5
3559	BAL-12.5	Sections 3 and 5
3560	BAL-12.5	Sections 3 and 5
3561	BAL-19	Sections 3 and 6
3562	BAL-19	Sections 3 and 6
3563	BAL-12.5	Sections 3 and 5
3564	BAL-12.5	Sections 3 and 5
3565	BAL-12.5	Sections 3 and 5
3566	BAL-12.5	Sections 3 and 5
3567	BAL-12.5	Sections 3 and 5
3568	BAL-12.5	Sections 3 and 5
3569	BAL-12.5	Sections 3 and 5
3570	BAL-12.5	Sections 3 and 5
3571	BAL-12.5	Sections 3 and 5
3572	BAL-12.5	Sections 3 and 5
3573	BAL-12.5	Sections 3 and 5
3574	BAL-12.5	Sections 3 and 5
3575	BAL-12.5	Sections 3 and 5
3576	BAL-12.5	Sections 3 and 5
3577	BAL-12.5	Sections 3 and 5
3578	BAL-12.5	Sections 3 and 5
3579	BAL-12.5	Sections 3 and 5
3580	BAL-12.5	Sections 3 and 5
3581	BAL-12.5	Sections 3 and 5
3582	BAL-12.5	Sections 3 and 5
3583	BAL-12.5	Sections 3 and 5
3584	BAL-12.5	Sections 3 and 5
3585	BAL-12.5	Sections 3 and 5
3586	BAL-19	Sections 3 and 6
3587	BAL-12.5	Sections 3 and 5
3588	BAL-12.5	Sections 3 and 5
3589	BAL-12.5	Sections 3 and 5
3590	BAL-29	Sections 3 and 7

**Notes** 1 BAL rating and BAL construction requirements are only relevant to *Overall Plan of Subdivision* - plan reference 110056-639, revision number D, dated 7 July 2025.

2 This residential allotment has an asset protection zone which prevents residential dwellings and structures from being located within in the part of the allotment which exceeds a BAL rating of BAL-29.

Lot number	BAL rating <sup>1</sup>	AS 3959-2018 construction requirements <sup>1</sup>
3591	BAL-29	Sections 3 and 7
3592	BAL-12.5	Sections 3 and 5
3593	BAL-12.5	Sections 3 and 5
3594	BAL-12.5	Sections 3 and 5
3595	BAL-12.5	Sections 3 and 5
3596	BAL-12.5	Sections 3 and 5
3597	BAL-12.5	Sections 3 and 5
3598	BAL-12.5	Sections 3 and 5
3599	BAL-12.5	Sections 3 and 5
3600	BAL-29	Sections 3 and 7
3601	BAL-29	Sections 3 and 7
3602	BAL-29	Sections 3 and 7
3603	BAL-29	Sections 3 and 7
3604	BAL-12.5	Sections 3 and 5
3605	BAL-12.5	Sections 3 and 5
3606	BAL-12.5	Sections 3 and 5
3607	BAL-12.5	Sections 3 and 5
3608	BAL-12.5	Sections 3 and 5
3609	BAL-29	Sections 3 and 7
3610	BAL-29	Sections 3 and 7
3611	BAL-29	Sections 3 and 7
3612	BAL-29	Sections 3 and 7
3613	BAL-29	Sections 3 and 7
3614	BAL-29	Sections 3 and 7
3615	BAL-29	Sections 3 and 7
3616	BAL-29	Sections 3 and 7
3617	BAL-12.5	Sections 3 and 5
3618	BAL-12.5	Sections 3 and 5
3619	BAL-12.5	Sections 3 and 5
3620	BAL-12.5	Sections 3 and 5
3621	BAL-12.5	Sections 3 and 5
3622	BAL-12.5	Sections 3 and 5
3623	BAL-12.5	Sections 3 and 5
3624	BAL-12.5	Sections 3 and 5
3625	BAL-12.5	Sections 3 and 5
3626	BAL-12.5	Sections 3 and 5
3627	BAL-12.5	Sections 3 and 5

**Notes** 1 BAL rating and BAL construction requirements are only relevant to *Overall Plan of Subdivision* - plan reference 110056-639, revision number D, dated 7 July 2025.  
2 This residential allotment has an asset protection zone which prevents residential dwellings and structures from being located within in the part of the allotment which exceeds a BAL rating of BAL-29.

Lot number	BAL rating <sup>1</sup>	AS 3959-2018 construction requirements <sup>1</sup>
3628	BAL-12.5	Sections 3 and 5
3629	BAL-12.5	Sections 3 and 5
3630	BAL-29	Sections 3 and 7
3631	BAL-29	Sections 3 and 7
3632	BAL-29	Sections 3 and 7
3633	BAL-12.5	Sections 3 and 5
3634	BAL-12.5	Sections 3 and 5
3635	BAL-12.5	Sections 3 and 5
3636	BAL-12.5	Sections 3 and 5
3637	BAL-12.5	Sections 3 and 5
3638	BAL-12.5	Sections 3 and 5
3639	BAL-LOW	There is insufficient risk to warrant specific construction requirements
3640	BAL-12.5	Sections 3 and 5
3641	BAL-12.5	Sections 3 and 5
3642	BAL-12.5	Sections 3 and 5
3643	BAL-LOW	There is insufficient risk to warrant specific construction requirements
3644	BAL-LOW	There is insufficient risk to warrant specific construction requirements
3645	BAL-12.5	Sections 3 and 5
3646	BAL-12.5	Sections 3 and 5
3647	BAL-12.5	Sections 3 and 5
3648	BAL-12.5	Sections 3 and 5
3649	BAL-12.5	Sections 3 and 5
3650	BAL-19	Sections 3 and 6
3651	BAL-29	Sections 3 and 7
3652	BAL-29	Sections 3 and 7
3653	BAL-29	Sections 3 and 7
3654	BAL-12.5	Sections 3 and 5
3655	BAL-12.5	Sections 3 and 5
3656	BAL-12.5	Sections 3 and 5
3657	BAL-12.5	Sections 3 and 5
3658	BAL-12.5	Sections 3 and 5
3659	BAL-12.5	Sections 3 and 5
3660	BAL-12.5	Sections 3 and 5
3661	BAL-12.5	Sections 3 and 5
3662	BAL-12.5	Sections 3 and 5

**Notes** 1 BAL rating and BAL construction requirements are only relevant to *Overall Plan of Subdivision* - plan reference 110056-639, revision number D, dated 7 July 2025.

2 This residential allotment has an asset protection zone which prevents residential dwellings and structures from being located within in the part of the allotment which exceeds a BAL rating of BAL-29.



Lot number	BAL rating <sup>1</sup>	AS 3959-2018 construction requirements <sup>1</sup>
3663	BAL-19	Sections 3 and 6
3664	BAL-12.5	Sections 3 and 5
3665	BAL-12.5	Sections 3 and 5
3666	BAL-12.5	Sections 3 and 5
3667	BAL-12.5	Sections 3 and 5
3668	BAL-12.5	Sections 3 and 5
3669	BAL-12.5	Sections 3 and 5
3670	BAL-29	Sections 3 and 7
3671	BAL-29	Sections 3 and 7
3672	BAL-29	Sections 3 and 7
3673	BAL-29	Sections 3 and 7
3674	BAL-29	Sections 3 and 7
3675	BAL-29	Sections 3 and 7
3676	BAL-29	Sections 3 and 7
3677	BAL-29	Sections 3 and 7
3678	BAL-29	Sections 3 and 7
3679	BAL-29	Sections 3 and 7
3680	BAL-29	Sections 3 and 7
3681	BAL-29	Sections 3 and 7
3682	BAL-12.5	Sections 3 and 5
3683	BAL-12.5	Sections 3 and 5
3684	BAL-12.5	Sections 3 and 5
3685	BAL-12.5	Sections 3 and 5
3686	BAL-12.5	Sections 3 and 5
3687	BAL-LOW	There is insufficient risk to warrant specific construction requirements
3688	BAL-LOW	There is insufficient risk to warrant specific construction requirements
3689	BAL-LOW	There is insufficient risk to warrant specific construction requirements
3690	BAL-LOW	There is insufficient risk to warrant specific construction requirements
3691	BAL-12.5	Sections 3 and 5
3692	BAL-12.5	Sections 3 and 5
3693	BAL-12.5	Sections 3 and 5
3694	BAL-12.5	Sections 3 and 5
3695	BAL-12.5	Sections 3 and 5
3696	BAL-29	Sections 3 and 7
3697	BAL-29	Sections 3 and 7

**Notes** 1 BAL rating and BAL construction requirements are only relevant to *Overall Plan of Subdivision* - plan reference 110056-639, revision number D, dated 7 July 2025.

2 This residential allotment has an asset protection zone which prevents residential dwellings and structures from being located within in the part of the allotment which exceeds a BAL rating of BAL-29.

Lot number	BAL rating <sup>1</sup>	AS 3959-2018 construction requirements <sup>1</sup>
3698	BAL-29	Sections 3 and 7
3699	BAL-29	Sections 3 and 7
3700	BAL-12.5	Sections 3 and 5
3701	BAL-12.5	Sections 3 and 5
3702	BAL-12.5	Sections 3 and 5
3703	BAL-12.5	Sections 3 and 5
3704	BAL-12.5	Sections 3 and 5
3705	BAL-LOW	There is insufficient risk to warrant specific construction requirements
3706	BAL-LOW	There is insufficient risk to warrant specific construction requirements
3707	BAL-LOW	There is insufficient risk to warrant specific construction requirements
3708	BAL-12.5	Sections 3 and 5
3709	BAL-12.5	Sections 3 and 5
3710	BAL-12.5	Sections 3 and 5
3711	BAL-12.5	Sections 3 and 5
3712	BAL-12.5	Sections 3 and 5
3713	BAL-12.5	Sections 3 and 5
3714	BAL-12.5	Sections 3 and 5
3715	BAL-12.5	Sections 3 and 5
3716	BAL-29	Sections 3 and 7
3717	BAL-29	Sections 3 and 7
3718	BAL-29	Sections 3 and 7
3719	BAL-19	Sections 3 and 6
3720	BAL-12.5	Sections 3 and 5
3721	BAL-12.5	Sections 3 and 5
3722	BAL-12.5	Sections 3 and 5
3723	BAL-12.5	Sections 3 and 5
3724	BAL-19	Sections 3 and 6
3725	BAL-29	Sections 3 and 7
3726	BAL-12.5	Sections 3 and 5
3727	BAL-12.5	Sections 3 and 5
3728	BAL-12.5	Sections 3 and 5
3729	BAL-12.5	Sections 3 and 5
3730	BAL-12.5	Sections 3 and 5
3731	BAL-12.5	Sections 3 and 5
3732	BAL-12.5	Sections 3 and 5

**Notes** 1 BAL rating and BAL construction requirements are only relevant to *Overall Plan of Subdivision* - plan reference 110056-639, revision number D, dated 7 July 2025.  
2 This residential allotment has an asset protection zone which prevents residential dwellings and structures from being located within in the part of the allotment which exceeds a BAL rating of BAL-29.

Lot number	BAL rating <sup>1</sup>	AS 3959-2018 construction requirements <sup>1</sup>
3733	BAL-12.5	Sections 3 and 5
3734	BAL-12.5	Sections 3 and 5
3735	BAL-12.5	Sections 3 and 5
3736	BAL-12.5	Sections 3 and 5
3737	BAL-12.5	Sections 3 and 5
3738	BAL-19	Sections 3 and 6
3739	BAL-29	Sections 3 and 7
3740	> BAL-29 - defer sale and construction in accordance with Section 6.3 of the BMP.	
3741	> BAL-29 - defer sale and construction in accordance with Section 6.3 of the BMP.	
3742	> BAL-29 - defer sale and construction in accordance with Section 6.3 of the BMP.	
3743	> BAL-29 - defer sale and construction in accordance with Section 6.3 of the BMP.	
3744	> BAL-29 - defer sale and construction in accordance with Section 6.3 of the BMP.	
3745	> BAL-29 - defer sale and construction in accordance with Section 6.3 of the BMP.	
3746	> BAL-29 - defer sale and construction in accordance with Section 6.3 of the BMP.	
3747	> BAL-29 - defer sale and construction in accordance with Section 6.3 of the BMP.	
3748	> BAL-29 - defer sale and construction in accordance with Section 6.3 of the BMP.	
3749	> BAL-29 - defer sale and construction in accordance with Section 6.3 of the BMP.	
3750	> BAL-29 - defer sale and construction in accordance with Section 6.3 of the BMP.	
3751	> BAL-29 - defer sale and construction in accordance with Section 6.3 of the BMP.	
3752	> BAL-29 - defer sale and construction in accordance with Section 6.3 of the BMP.	
3753	> BAL-29 - defer sale and construction in accordance with Section 6.3 of the BMP.	
3754	> BAL-29 - defer sale and construction in accordance with Section 6.3 of the BMP.	
3755	> BAL-29 - defer sale and construction in accordance with Section 6.3 of the BMP.	
3756	> BAL-29 - defer sale and construction in accordance with Section 6.3 of the BMP.	
3757	> BAL-29 - defer sale and construction in accordance with Section 6.3 of the BMP.	

**Notes** 1 BAL rating and BAL construction requirements are only relevant to *Overall Plan of Subdivision* - plan reference 110056-639, revision number D, dated 7 July 2025.  
2 This residential allotment has an asset protection zone which prevents residential dwellings and structures from being located within in the part of the allotment which exceeds a BAL rating of BAL-29.

Lot number	BAL rating <sup>1</sup>	AS 3959-2018 construction requirements <sup>1</sup>
3758	> BAL-29 - defer sale and construction in accordance with Section 6.3 of the BMP.	
3759	> BAL-29 - defer sale and construction in accordance with Section 6.3 of the BMP.	
3760	BAL-12.5	Sections 3 and 5
3761	BAL-12.5	Sections 3 and 5
3762	BAL-12.5	Sections 3 and 5
3763	BAL-12.5	Sections 3 and 5
3764	BAL-12.5	Sections 3 and 5
3765	BAL-12.5	Sections 3 and 5
3766	BAL-12.5	Sections 3 and 5
3767	BAL-12.5	Sections 3 and 5
3768	BAL-12.5	Sections 3 and 5
3769	BAL-LOW	There is insufficient risk to warrant specific construction requirements
3770	BAL-LOW	There is insufficient risk to warrant specific construction requirements
3771	BAL-LOW	There is insufficient risk to warrant specific construction requirements
3772	BAL-LOW	There is insufficient risk to warrant specific construction requirements
3773	BAL-LOW	There is insufficient risk to warrant specific construction requirements
3774	BAL-LOW	There is insufficient risk to warrant specific construction requirements
3775	BAL-LOW	There is insufficient risk to warrant specific construction requirements
3776	BAL-LOW	There is insufficient risk to warrant specific construction requirements
3777	BAL-LOW	There is insufficient risk to warrant specific construction requirements
3778	BAL-LOW	There is insufficient risk to warrant specific construction requirements
3779	BAL-LOW	There is insufficient risk to warrant specific construction requirements
3780	BAL-LOW	There is insufficient risk to warrant specific construction requirements
3781	BAL-LOW	There is insufficient risk to warrant specific construction requirements
3782	BAL-LOW	There is insufficient risk to warrant specific construction requirements
3783	BAL-LOW	There is insufficient risk to warrant specific construction requirements

**Notes** 1 BAL rating and BAL construction requirements are only relevant to *Overall Plan of Subdivision* - plan reference 110056-639, revision number D, dated 7 July 2025.  
2 This residential allotment has an asset protection zone which prevents residential dwellings and structures from being located within in the part of the allotment which exceeds a BAL rating of BAL-29.

Lot number	BAL rating <sup>1</sup>	AS 3959-2018 construction requirements <sup>1</sup>
3784	BAL-LOW	There is insufficient risk to warrant specific construction requirements
3785	BAL-LOW	There is insufficient risk to warrant specific construction requirements
3786	BAL-LOW	There is insufficient risk to warrant specific construction requirements
3787	BAL-LOW	There is insufficient risk to warrant specific construction requirements
3788	BAL-LOW	There is insufficient risk to warrant specific construction requirements
3789	BAL-12.5	Sections 3 and 5
3790	BAL-12.5	Sections 3 and 5
3791	BAL-12.5	Sections 3 and 5
3792	BAL-12.5	Sections 3 and 5
3793	BAL-12.5	Sections 3 and 5
3794	BAL-12.5	Sections 3 and 5
3795	BAL-12.5	Sections 3 and 5
3796	BAL-12.5	Sections 3 and 5
3797	BAL-LOW	There is insufficient risk to warrant specific construction requirements
3798	BAL-LOW	There is insufficient risk to warrant specific construction requirements
3799	BAL-LOW	There is insufficient risk to warrant specific construction requirements
3800	BAL-LOW	There is insufficient risk to warrant specific construction requirements
3801	BAL-LOW	There is insufficient risk to warrant specific construction requirements
3802	BAL-LOW	There is insufficient risk to warrant specific construction requirements
3803	BAL-LOW	There is insufficient risk to warrant specific construction requirements
3804	BAL-LOW	There is insufficient risk to warrant specific construction requirements
3805	BAL-LOW	There is insufficient risk to warrant specific construction requirements
3806	BAL-LOW	There is insufficient risk to warrant specific construction requirements
3807	BAL-LOW	There is insufficient risk to warrant specific construction requirements
3808	BAL-LOW	There is insufficient risk to warrant specific construction requirements

**Notes** 1 BAL rating and BAL construction requirements are only relevant to *Overall Plan of Subdivision* - plan reference 110056-639, revision number D, dated 7 July 2025.  
2 This residential allotment has an asset protection zone which prevents residential dwellings and structures from being located within in the part of the allotment which exceeds a BAL rating of BAL-29.



Lot number	BAL rating <sup>1</sup>	AS 3959-2018 construction requirements <sup>1</sup>
3809	BAL-LOW	There is insufficient risk to warrant specific construction requirements
3810	BAL-LOW	There is insufficient risk to warrant specific construction requirements
3811	BAL-LOW	There is insufficient risk to warrant specific construction requirements
3812	BAL-LOW	There is insufficient risk to warrant specific construction requirements
3813	BAL-LOW	There is insufficient risk to warrant specific construction requirements
3814	BAL-LOW	There is insufficient risk to warrant specific construction requirements
3815	BAL-12.5	Sections 3 and 5
3816	BAL-12.5	Sections 3 and 5
3817	BAL-12.5	Sections 3 and 5
3818	BAL-12.5	Sections 3 and 5
3819	BAL-12.5	Sections 3 and 5
3820	BAL-12.5	Sections 3 and 5
3821	BAL-12.5	Sections 3 and 5
3822	BAL-12.5	Sections 3 and 5
3823	BAL-12.5	Sections 3 and 5
3824	BAL-12.5	Sections 3 and 5
3825	BAL-12.5	Sections 3 and 5
3826	BAL-12.5	Sections 3 and 5
3827	BAL-12.5	Sections 3 and 5
3828	BAL-12.5	Sections 3 and 5
3829	BAL-12.5	Sections 3 and 5
3830	BAL-LOW	There is insufficient risk to warrant specific construction requirements
3831	BAL-12.5	Sections 3 and 5
3832	BAL-12.5	Sections 3 and 5
3833	BAL-12.5	Sections 3 and 5
3834	BAL-12.5	Sections 3 and 5
3835	BAL-12.5	Sections 3 and 5
3836	BAL-12.5	Sections 3 and 5
3837	BAL-12.5	Sections 3 and 5
3838	BAL-12.5	Sections 3 and 5
3839	BAL-12.5	Sections 3 and 5
3840	BAL-12.5	Sections 3 and 5
3841	BAL-12.5	Sections 3 and 5

**Notes** 1 BAL rating and BAL construction requirements are only relevant to *Overall Plan of Subdivision* - plan reference 110056-639, revision number D, dated 7 July 2025.

2 This residential allotment has an asset protection zone which prevents residential dwellings and structures from being located within in the part of the allotment which exceeds a BAL rating of BAL-29.

Lot number	BAL rating <sup>1</sup>	AS 3959-2018 construction requirements <sup>1</sup>
3842	BAL-12.5	Sections 3 and 5
3843	BAL-12.5	Sections 3 and 5
3844	BAL-12.5	Sections 3 and 5
3845	BAL-12.5	Sections 3 and 5
3846	BAL-12.5	Sections 3 and 5
3847	BAL-12.5	Sections 3 and 5
3848	BAL-12.5	Sections 3 and 5
3849	BAL-12.5	Sections 3 and 5
3850	BAL-12.5	Sections 3 and 5
3851	BAL-12.5	Sections 3 and 5
3852	BAL-12.5	Sections 3 and 5
3853	BAL-12.5	Sections 3 and 5
3854	BAL-12.5	Sections 3 and 5
3855	BAL-12.5	Sections 3 and 5
3856	BAL-12.5	Sections 3 and 5
3857	BAL-LOW	There is insufficient risk to warrant specific construction requirements
3858	BAL-LOW	There is insufficient risk to warrant specific construction requirements
3859	BAL-LOW	There is insufficient risk to warrant specific construction requirements
3860	BAL-LOW	There is insufficient risk to warrant specific construction requirements
3861	BAL-LOW	There is insufficient risk to warrant specific construction requirements
3862	BAL-LOW	There is insufficient risk to warrant specific construction requirements
3863	BAL-LOW	There is insufficient risk to warrant specific construction requirements
3864	BAL-LOW	There is insufficient risk to warrant specific construction requirements
3865	BAL-LOW	There is insufficient risk to warrant specific construction requirements
3866	BAL-LOW	There is insufficient risk to warrant specific construction requirements
3867	BAL-LOW	There is insufficient risk to warrant specific construction requirements
3868	BAL-LOW	There is insufficient risk to warrant specific construction requirements
3869	BAL-LOW	There is insufficient risk to warrant specific construction requirements

**Notes** 1 BAL rating and BAL construction requirements are only relevant to *Overall Plan of Subdivision* - plan reference 110056-639, revision number D, dated 7 July 2025.  
2 This residential allotment has an asset protection zone which prevents residential dwellings and structures from being located within in the part of the allotment which exceeds a BAL rating of BAL-29.

Lot number	BAL rating <sup>1</sup>	AS 3959-2018 construction requirements <sup>1</sup>
3870	BAL-LOW	There is insufficient risk to warrant specific construction requirements
3871	BAL-LOW	There is insufficient risk to warrant specific construction requirements
3872	BAL-LOW	There is insufficient risk to warrant specific construction requirements
3873	BAL-LOW	There is insufficient risk to warrant specific construction requirements
3874	BAL-LOW	There is insufficient risk to warrant specific construction requirements
3875	BAL-LOW	There is insufficient risk to warrant specific construction requirements
3876	BAL-LOW	There is insufficient risk to warrant specific construction requirements
3877	BAL-LOW	There is insufficient risk to warrant specific construction requirements
3878	BAL-LOW	There is insufficient risk to warrant specific construction requirements
3879	BAL-LOW	There is insufficient risk to warrant specific construction requirements
3880	BAL-LOW	There is insufficient risk to warrant specific construction requirements
3881	BAL-LOW	There is insufficient risk to warrant specific construction requirements
3882	BAL-LOW	There is insufficient risk to warrant specific construction requirements
3883	BAL-LOW	There is insufficient risk to warrant specific construction requirements
3884	BAL-LOW	There is insufficient risk to warrant specific construction requirements
3885	BAL-LOW	There is insufficient risk to warrant specific construction requirements
3886	BAL-LOW	There is insufficient risk to warrant specific construction requirements
3887	BAL-LOW	There is insufficient risk to warrant specific construction requirements
3888	BAL-LOW	There is insufficient risk to warrant specific construction requirements
3889	BAL-LOW	There is insufficient risk to warrant specific construction requirements
3890	BAL-LOW	There is insufficient risk to warrant specific construction requirements
3891	BAL-LOW	There is insufficient risk to warrant specific construction requirements

**Notes** 1 BAL rating and BAL construction requirements are only relevant to *Overall Plan of Subdivision* - plan reference 110056-639, revision number D, dated 7 July 2025.  
2 This residential allotment has an asset protection zone which prevents residential dwellings and structures from being located within in the part of the allotment which exceeds a BAL rating of BAL-29.

Lot number	BAL rating <sup>1</sup>	AS 3959-2018 construction requirements <sup>1</sup>
3892	BAL-LOW	There is insufficient risk to warrant specific construction requirements
3893	BAL-LOW	There is insufficient risk to warrant specific construction requirements
3894	BAL-LOW	There is insufficient risk to warrant specific construction requirements
3895	BAL-LOW	There is insufficient risk to warrant specific construction requirements
3896	BAL-LOW	There is insufficient risk to warrant specific construction requirements
3897	BAL-LOW	There is insufficient risk to warrant specific construction requirements
3898	BAL-LOW	There is insufficient risk to warrant specific construction requirements
3899	BAL-LOW	There is insufficient risk to warrant specific construction requirements
3900	BAL-LOW	There is insufficient risk to warrant specific construction requirements
3901	BAL-LOW	There is insufficient risk to warrant specific construction requirements
3902	BAL-LOW	There is insufficient risk to warrant specific construction requirements
3903	BAL-LOW	There is insufficient risk to warrant specific construction requirements
3904	BAL-LOW	There is insufficient risk to warrant specific construction requirements
3905	BAL-LOW	There is insufficient risk to warrant specific construction requirements
3906	BAL-LOW	There is insufficient risk to warrant specific construction requirements
3907	BAL-LOW	There is insufficient risk to warrant specific construction requirements
3908	BAL-LOW	There is insufficient risk to warrant specific construction requirements
3909	BAL-LOW	There is insufficient risk to warrant specific construction requirements
3910	BAL-LOW	There is insufficient risk to warrant specific construction requirements
3911	BAL-LOW	There is insufficient risk to warrant specific construction requirements
3912	BAL-LOW	There is insufficient risk to warrant specific construction requirements
3913	BAL-LOW	There is insufficient risk to warrant specific construction requirements

**Notes** 1 BAL rating and BAL construction requirements are only relevant to *Overall Plan of Subdivision* - plan reference 110056-639, revision number D, dated 7 July 2025.  
2 This residential allotment has an asset protection zone which prevents residential dwellings and structures from being located within in the part of the allotment which exceeds a BAL rating of BAL-29.

Lot number	BAL rating <sup>1</sup>	AS 3959-2018 construction requirements <sup>1</sup>
3914	BAL-LOW	There is insufficient risk to warrant specific construction requirements
3915	BAL-LOW	There is insufficient risk to warrant specific construction requirements
3916	BAL-LOW	There is insufficient risk to warrant specific construction requirements
3917	BAL-LOW	There is insufficient risk to warrant specific construction requirements
3918	BAL-LOW	There is insufficient risk to warrant specific construction requirements
3919	BAL-LOW	There is insufficient risk to warrant specific construction requirements
3920	BAL-LOW	There is insufficient risk to warrant specific construction requirements
3921	BAL-LOW	There is insufficient risk to warrant specific construction requirements
3922	BAL-LOW	There is insufficient risk to warrant specific construction requirements
3923	BAL-LOW	There is insufficient risk to warrant specific construction requirements
3924	BAL-LOW	There is insufficient risk to warrant specific construction requirements
3925	BAL-LOW	There is insufficient risk to warrant specific construction requirements
3926	BAL-LOW	There is insufficient risk to warrant specific construction requirements
3927	BAL-LOW	There is insufficient risk to warrant specific construction requirements
3928	BAL-LOW	There is insufficient risk to warrant specific construction requirements
3929	BAL-LOW	There is insufficient risk to warrant specific construction requirements
3930	BAL-LOW	There is insufficient risk to warrant specific construction requirements
3931	BAL-LOW	There is insufficient risk to warrant specific construction requirements
3932	BAL-LOW	There is insufficient risk to warrant specific construction requirements
3933	BAL-LOW	There is insufficient risk to warrant specific construction requirements
3934	BAL-LOW	There is insufficient risk to warrant specific construction requirements
3935	BAL-LOW	There is insufficient risk to warrant specific construction requirements

**Notes** 1 BAL rating and BAL construction requirements are only relevant to *Overall Plan of Subdivision* - plan reference 110056-639, revision number D, dated 7 July 2025.  
2 This residential allotment has an asset protection zone which prevents residential dwellings and structures from being located within in the part of the allotment which exceeds a BAL rating of BAL-29.



Lot number	BAL rating <sup>1</sup>	AS 3959-2018 construction requirements <sup>1</sup>
3936	BAL-LOW	There is insufficient risk to warrant specific construction requirements
3937	BAL-LOW	There is insufficient risk to warrant specific construction requirements
3938	BAL-LOW	There is insufficient risk to warrant specific construction requirements
3939	BAL-LOW	There is insufficient risk to warrant specific construction requirements
3940	BAL-LOW	There is insufficient risk to warrant specific construction requirements
3941	BAL-LOW	There is insufficient risk to warrant specific construction requirements
3942	BAL-LOW	There is insufficient risk to warrant specific construction requirements
3943	BAL-LOW	There is insufficient risk to warrant specific construction requirements
3944	BAL-LOW	There is insufficient risk to warrant specific construction requirements
3945	BAL-LOW	There is insufficient risk to warrant specific construction requirements
3946	BAL-LOW	There is insufficient risk to warrant specific construction requirements
3947	BAL-LOW	There is insufficient risk to warrant specific construction requirements
3948	BAL-LOW	There is insufficient risk to warrant specific construction requirements
3949	BAL-LOW	There is insufficient risk to warrant specific construction requirements
3950	BAL-LOW	There is insufficient risk to warrant specific construction requirements
3951	BAL-LOW	There is insufficient risk to warrant specific construction requirements
3952	BAL-LOW	There is insufficient risk to warrant specific construction requirements
3953	BAL-LOW	There is insufficient risk to warrant specific construction requirements
3954	BAL-LOW	There is insufficient risk to warrant specific construction requirements
3955	BAL-LOW	There is insufficient risk to warrant specific construction requirements
3956	BAL-LOW	There is insufficient risk to warrant specific construction requirements
3957	BAL-LOW	There is insufficient risk to warrant specific construction requirements

**Notes** 1 BAL rating and BAL construction requirements are only relevant to *Overall Plan of Subdivision* - plan reference 110056-639, revision number D, dated 7 July 2025.  
2 This residential allotment has an asset protection zone which prevents residential dwellings and structures from being located within in the part of the allotment which exceeds a BAL rating of BAL-29.

Lot number	BAL rating <sup>1</sup>	AS 3959-2018 construction requirements <sup>1</sup>
3958	BAL-LOW	There is insufficient risk to warrant specific construction requirements
3959	BAL-LOW	There is insufficient risk to warrant specific construction requirements
3960	BAL-LOW	There is insufficient risk to warrant specific construction requirements
3961	BAL-LOW	There is insufficient risk to warrant specific construction requirements
3962	BAL-LOW	There is insufficient risk to warrant specific construction requirements
3963	BAL-LOW	There is insufficient risk to warrant specific construction requirements
3964	BAL-LOW	There is insufficient risk to warrant specific construction requirements
3965	BAL-LOW	There is insufficient risk to warrant specific construction requirements
3966	BAL-LOW	There is insufficient risk to warrant specific construction requirements
3967	BAL-LOW	There is insufficient risk to warrant specific construction requirements
3968	BAL-LOW	There is insufficient risk to warrant specific construction requirements
3969	BAL-LOW	There is insufficient risk to warrant specific construction requirements
3970	BAL-LOW	There is insufficient risk to warrant specific construction requirements
3971	BAL-LOW	There is insufficient risk to warrant specific construction requirements
3972	BAL-LOW	There is insufficient risk to warrant specific construction requirements
3973	BAL-LOW	There is insufficient risk to warrant specific construction requirements
3974	BAL-LOW	There is insufficient risk to warrant specific construction requirements
3975	BAL-LOW	There is insufficient risk to warrant specific construction requirements
3976	BAL-LOW	There is insufficient risk to warrant specific construction requirements
3977	BAL-LOW	There is insufficient risk to warrant specific construction requirements
3978	BAL-LOW	There is insufficient risk to warrant specific construction requirements
3979	BAL-LOW	There is insufficient risk to warrant specific construction requirements

**Notes** 1 BAL rating and BAL construction requirements are only relevant to *Overall Plan of Subdivision* - plan reference 110056-639, revision number D, dated 7 July 2025.

2 This residential allotment has an asset protection zone which prevents residential dwellings and structures from being located within in the part of the allotment which exceeds a BAL rating of BAL-29.

Lot number	BAL rating <sup>1</sup>	AS 3959-2018 construction requirements <sup>1</sup>
3980	BAL-LOW	There is insufficient risk to warrant specific construction requirements
3981	BAL-LOW	There is insufficient risk to warrant specific construction requirements
3982	BAL-LOW	There is insufficient risk to warrant specific construction requirements
3983	BAL-LOW	There is insufficient risk to warrant specific construction requirements
3984	BAL-LOW	There is insufficient risk to warrant specific construction requirements
3985	BAL-LOW	There is insufficient risk to warrant specific construction requirements
3986	BAL-LOW	There is insufficient risk to warrant specific construction requirements
3987	BAL-LOW	There is insufficient risk to warrant specific construction requirements
3988	BAL-LOW	There is insufficient risk to warrant specific construction requirements
3989	BAL-LOW	There is insufficient risk to warrant specific construction requirements
3990	BAL-12.5	Sections 3 and 5
3991	BAL-12.5	Sections 3 and 5
3992	BAL-12.5	Sections 3 and 5
3993	BAL-12.5	Sections 3 and 5
3994	BAL-12.5	Sections 3 and 5
3995	BAL-12.5	Sections 3 and 5
3996	BAL-12.5	Sections 3 and 5
3997	BAL-12.5	Sections 3 and 5
3998	BAL-12.5	Sections 3 and 5
3999	BAL-12.5	Sections 3 and 5
4000	BAL-12.5	Sections 3 and 5
4001	BAL-12.5	Sections 3 and 5
4002	BAL-12.5	Sections 3 and 5
4003	BAL-LOW	There is insufficient risk to warrant specific construction requirements
4004	BAL-12.5	Sections 3 and 5
4005	BAL-12.5	Sections 3 and 5
4006	BAL-12.5	Sections 3 and 5
4007	BAL-12.5	Sections 3 and 5
4008	BAL-12.5	Sections 3 and 5
4009	BAL-12.5	Sections 3 and 5

**Notes** 1 BAL rating and BAL construction requirements are only relevant to *Overall Plan of Subdivision* - plan reference 110056-639, revision number D, dated 7 July 2025.  
2 This residential allotment has an asset protection zone which prevents residential dwellings and structures from being located within in the part of the allotment which exceeds a BAL rating of BAL-29.

Lot number	BAL rating <sup>1</sup>	AS 3959-2018 construction requirements <sup>1</sup>
4010	BAL-12.5	Sections 3 and 5
4011	BAL-12.5	Sections 3 and 5
4012	BAL-12.5	Sections 3 and 5
4013	BAL-LOW	There is insufficient risk to warrant specific construction requirements
4014	BAL-LOW	There is insufficient risk to warrant specific construction requirements
4015	BAL-LOW	There is insufficient risk to warrant specific construction requirements
4016	BAL-LOW	There is insufficient risk to warrant specific construction requirements
4017	BAL-LOW	There is insufficient risk to warrant specific construction requirements
4018	BAL-LOW	There is insufficient risk to warrant specific construction requirements
4019	BAL-LOW	There is insufficient risk to warrant specific construction requirements
4020	BAL-LOW	There is insufficient risk to warrant specific construction requirements
4021	BAL-LOW	There is insufficient risk to warrant specific construction requirements
4022	BAL-LOW	There is insufficient risk to warrant specific construction requirements
4023	BAL-LOW	There is insufficient risk to warrant specific construction requirements
4024	BAL-LOW	There is insufficient risk to warrant specific construction requirements
4025	BAL-LOW	There is insufficient risk to warrant specific construction requirements
4026	BAL-LOW	There is insufficient risk to warrant specific construction requirements
4027	BAL-LOW	There is insufficient risk to warrant specific construction requirements
4028	BAL-LOW	There is insufficient risk to warrant specific construction requirements
4029	BAL-LOW	There is insufficient risk to warrant specific construction requirements
4030	BAL-LOW	There is insufficient risk to warrant specific construction requirements
4031	BAL-LOW	There is insufficient risk to warrant specific construction requirements
4032	BAL-LOW	There is insufficient risk to warrant specific construction requirements

**Notes** 1 BAL rating and BAL construction requirements are only relevant to *Overall Plan of Subdivision* - plan reference 110056-639, revision number D, dated 7 July 2025.  
2 This residential allotment has an asset protection zone which prevents residential dwellings and structures from being located within in the part of the allotment which exceeds a BAL rating of BAL-29.

Lot number	BAL rating <sup>1</sup>	AS 3959-2018 construction requirements <sup>1</sup>
4033	BAL-LOW	There is insufficient risk to warrant specific construction requirements
4034	BAL-LOW	There is insufficient risk to warrant specific construction requirements
4035	BAL-LOW	There is insufficient risk to warrant specific construction requirements
4036	BAL-LOW	There is insufficient risk to warrant specific construction requirements
4037	BAL-LOW	There is insufficient risk to warrant specific construction requirements
4038	BAL-LOW	There is insufficient risk to warrant specific construction requirements
4039	BAL-LOW	There is insufficient risk to warrant specific construction requirements
4040	BAL-LOW	There is insufficient risk to warrant specific construction requirements
4041	BAL-12.5	Sections 3 and 5
4042	BAL-12.5	Sections 3 and 5
4043	BAL-LOW	There is insufficient risk to warrant specific construction requirements
4044	BAL-LOW	There is insufficient risk to warrant specific construction requirements
4045	BAL-LOW	There is insufficient risk to warrant specific construction requirements
4046	BAL-LOW	There is insufficient risk to warrant specific construction requirements
4047	BAL-LOW	There is insufficient risk to warrant specific construction requirements
4048	BAL-LOW	There is insufficient risk to warrant specific construction requirements
4049	BAL-LOW	There is insufficient risk to warrant specific construction requirements
4050	BAL-LOW	There is insufficient risk to warrant specific construction requirements
4051	BAL-LOW	There is insufficient risk to warrant specific construction requirements
4052	BAL-LOW	There is insufficient risk to warrant specific construction requirements
4053	BAL-LOW	There is insufficient risk to warrant specific construction requirements
4054	BAL-LOW	There is insufficient risk to warrant specific construction requirements
4055	BAL-LOW	There is insufficient risk to warrant specific construction requirements

**Notes** 1 BAL rating and BAL construction requirements are only relevant to *Overall Plan of Subdivision* - plan reference 110056-639, revision number D, dated 7 July 2025.  
2 This residential allotment has an asset protection zone which prevents residential dwellings and structures from being located within in the part of the allotment which exceeds a BAL rating of BAL-29.



Lot number	BAL rating <sup>1</sup>	AS 3959-2018 construction requirements <sup>1</sup>
4056	BAL-LOW	There is insufficient risk to warrant specific construction requirements
4057	BAL-LOW	There is insufficient risk to warrant specific construction requirements
4058	BAL-LOW	There is insufficient risk to warrant specific construction requirements
4059	BAL-LOW	There is insufficient risk to warrant specific construction requirements
4060	BAL-LOW	There is insufficient risk to warrant specific construction requirements
4061	BAL-LOW	There is insufficient risk to warrant specific construction requirements
4062	BAL-LOW	There is insufficient risk to warrant specific construction requirements
4063	BAL-LOW	There is insufficient risk to warrant specific construction requirements
4064	BAL-LOW	There is insufficient risk to warrant specific construction requirements
4065	BAL-LOW	There is insufficient risk to warrant specific construction requirements
4066	BAL-LOW	There is insufficient risk to warrant specific construction requirements
4067	BAL-LOW	There is insufficient risk to warrant specific construction requirements
4068	BAL-LOW	There is insufficient risk to warrant specific construction requirements
4069	BAL-LOW	There is insufficient risk to warrant specific construction requirements
4070	BAL-LOW	There is insufficient risk to warrant specific construction requirements
4071	BAL-LOW	There is insufficient risk to warrant specific construction requirements
4072	BAL-LOW	There is insufficient risk to warrant specific construction requirements
4073	BAL-LOW	There is insufficient risk to warrant specific construction requirements
4074	BAL-LOW	There is insufficient risk to warrant specific construction requirements
4075	BAL-LOW	There is insufficient risk to warrant specific construction requirements
4076	BAL-LOW	There is insufficient risk to warrant specific construction requirements
4077	BAL-LOW	There is insufficient risk to warrant specific construction requirements

**Notes** 1 BAL rating and BAL construction requirements are only relevant to *Overall Plan of Subdivision* - plan reference 110056-639, revision number D, dated 7 July 2025.  
2 This residential allotment has an asset protection zone which prevents residential dwellings and structures from being located within in the part of the allotment which exceeds a BAL rating of BAL-29.

Lot number	BAL rating <sup>1</sup>	AS 3959-2018 construction requirements <sup>1</sup>
4078	BAL-LOW	There is insufficient risk to warrant specific construction requirements
4079	BAL-LOW	There is insufficient risk to warrant specific construction requirements
4080	BAL-LOW	There is insufficient risk to warrant specific construction requirements
4081	BAL-LOW	There is insufficient risk to warrant specific construction requirements
4082	BAL-LOW	There is insufficient risk to warrant specific construction requirements
4083	BAL-LOW	There is insufficient risk to warrant specific construction requirements
4084	BAL-LOW	There is insufficient risk to warrant specific construction requirements
4085	BAL-LOW	There is insufficient risk to warrant specific construction requirements
4086	BAL-LOW	There is insufficient risk to warrant specific construction requirements
4087	BAL-LOW	There is insufficient risk to warrant specific construction requirements
4088	BAL-LOW	There is insufficient risk to warrant specific construction requirements
4089	BAL-LOW	There is insufficient risk to warrant specific construction requirements
4090	BAL-LOW	There is insufficient risk to warrant specific construction requirements
4091	BAL-LOW	There is insufficient risk to warrant specific construction requirements
4092	BAL-LOW	There is insufficient risk to warrant specific construction requirements
4093	BAL-LOW	There is insufficient risk to warrant specific construction requirements
4094	BAL-LOW	There is insufficient risk to warrant specific construction requirements
4095	BAL-LOW	There is insufficient risk to warrant specific construction requirements
4096	BAL-LOW	There is insufficient risk to warrant specific construction requirements
4097	BAL-LOW	There is insufficient risk to warrant specific construction requirements
4098	BAL-LOW	There is insufficient risk to warrant specific construction requirements
4099	BAL-LOW	There is insufficient risk to warrant specific construction requirements

**Notes** 1 BAL rating and BAL construction requirements are only relevant to *Overall Plan of Subdivision* - plan reference 110056-639, revision number D, dated 7 July 2025.  
2 This residential allotment has an asset protection zone which prevents residential dwellings and structures from being located within in the part of the allotment which exceeds a BAL rating of BAL-29.

Lot number	BAL rating <sup>1</sup>	AS 3959-2018 construction requirements <sup>1</sup>
4100	BAL-LOW	There is insufficient risk to warrant specific construction requirements
4101	BAL-LOW	There is insufficient risk to warrant specific construction requirements
4102	BAL-LOW	There is insufficient risk to warrant specific construction requirements
4103	BAL-LOW	There is insufficient risk to warrant specific construction requirements
4104	BAL-LOW	There is insufficient risk to warrant specific construction requirements
4105	BAL-LOW	There is insufficient risk to warrant specific construction requirements
4106	BAL-LOW	There is insufficient risk to warrant specific construction requirements
4107	BAL-LOW	There is insufficient risk to warrant specific construction requirements
4108	BAL-LOW	There is insufficient risk to warrant specific construction requirements
4109	BAL-LOW	There is insufficient risk to warrant specific construction requirements
4110	BAL-LOW	There is insufficient risk to warrant specific construction requirements
4111	BAL-12.5	Sections 3 and 5
4112	BAL-12.5	Sections 3 and 5
4113	BAL-12.5	Sections 3 and 5
4114	BAL-12.5	Sections 3 and 5
4115	BAL-12.5	Sections 3 and 5
4116	BAL-LOW	There is insufficient risk to warrant specific construction requirements
4117	BAL-LOW	There is insufficient risk to warrant specific construction requirements
4118	BAL-LOW	There is insufficient risk to warrant specific construction requirements
4119	BAL-LOW	There is insufficient risk to warrant specific construction requirements
4120	BAL-LOW	There is insufficient risk to warrant specific construction requirements
4121	BAL-LOW	There is insufficient risk to warrant specific construction requirements
4122	BAL-LOW	There is insufficient risk to warrant specific construction requirements
4123	BAL-LOW	There is insufficient risk to warrant specific construction requirements

**Notes** 1 BAL rating and BAL construction requirements are only relevant to *Overall Plan of Subdivision* - plan reference 110056-639, revision number D, dated 7 July 2025.  
2 This residential allotment has an asset protection zone which prevents residential dwellings and structures from being located within in the part of the allotment which exceeds a BAL rating of BAL-29.

Lot number	BAL rating <sup>1</sup>	AS 3959-2018 construction requirements <sup>1</sup>
4124	BAL-LOW	There is insufficient risk to warrant specific construction requirements
4125	BAL-LOW	There is insufficient risk to warrant specific construction requirements
4126	BAL-LOW	There is insufficient risk to warrant specific construction requirements
4127	BAL-LOW	There is insufficient risk to warrant specific construction requirements
4128	BAL-LOW	There is insufficient risk to warrant specific construction requirements
4129	BAL-LOW	There is insufficient risk to warrant specific construction requirements
4130	BAL-LOW	There is insufficient risk to warrant specific construction requirements
4131	BAL-LOW	There is insufficient risk to warrant specific construction requirements
4132	BAL-LOW	There is insufficient risk to warrant specific construction requirements
4133	BAL-LOW	There is insufficient risk to warrant specific construction requirements
4134	BAL-12.5	Sections 3 and 5
4135	BAL-LOW	There is insufficient risk to warrant specific construction requirements
4136	BAL-LOW	There is insufficient risk to warrant specific construction requirements
4137	BAL-LOW	There is insufficient risk to warrant specific construction requirements
4138	BAL-LOW	There is insufficient risk to warrant specific construction requirements
4139	BAL-LOW	There is insufficient risk to warrant specific construction requirements
4140	BAL-LOW	There is insufficient risk to warrant specific construction requirements
4141	BAL-LOW	There is insufficient risk to warrant specific construction requirements
4142	BAL-LOW	There is insufficient risk to warrant specific construction requirements
4143	BAL-LOW	There is insufficient risk to warrant specific construction requirements
4144	BAL-LOW	There is insufficient risk to warrant specific construction requirements
4145	BAL-LOW	There is insufficient risk to warrant specific construction requirements
4146	BAL-LOW	There is insufficient risk to warrant specific construction requirements

**Notes** 1 BAL rating and BAL construction requirements are only relevant to *Overall Plan of Subdivision* - plan reference 110056-639, revision number D, dated 7 July 2025.  
2 This residential allotment has an asset protection zone which prevents residential dwellings and structures from being located within in the part of the allotment which exceeds a BAL rating of BAL-29.

Lot number	BAL rating <sup>1</sup>	AS 3959-2018 construction requirements <sup>1</sup>
4147	BAL-LOW	There is insufficient risk to warrant specific construction requirements
4148	BAL-LOW	There is insufficient risk to warrant specific construction requirements
4149	BAL-LOW	There is insufficient risk to warrant specific construction requirements
4150	BAL-LOW	There is insufficient risk to warrant specific construction requirements
4151	BAL-LOW	There is insufficient risk to warrant specific construction requirements
4152	BAL-LOW	There is insufficient risk to warrant specific construction requirements
4153	BAL-LOW	There is insufficient risk to warrant specific construction requirements
4154	BAL-LOW	There is insufficient risk to warrant specific construction requirements
4155	BAL-LOW	There is insufficient risk to warrant specific construction requirements
4156	BAL-LOW	There is insufficient risk to warrant specific construction requirements
4157	BAL-LOW	There is insufficient risk to warrant specific construction requirements
4158	BAL-LOW	There is insufficient risk to warrant specific construction requirements
4159	BAL-LOW	There is insufficient risk to warrant specific construction requirements
4160	BAL-LOW	There is insufficient risk to warrant specific construction requirements
4161	BAL-LOW	There is insufficient risk to warrant specific construction requirements
4162	BAL-LOW	There is insufficient risk to warrant specific construction requirements
4163	BAL-LOW	There is insufficient risk to warrant specific construction requirements
4164	BAL-LOW	There is insufficient risk to warrant specific construction requirements
4165	BAL-LOW	There is insufficient risk to warrant specific construction requirements
4166	BAL-LOW	There is insufficient risk to warrant specific construction requirements
4167	BAL-LOW	There is insufficient risk to warrant specific construction requirements
4168	BAL-LOW	There is insufficient risk to warrant specific construction requirements

**Notes** 1 BAL rating and BAL construction requirements are only relevant to *Overall Plan of Subdivision* - plan reference 110056-639, revision number D, dated 7 July 2025.  
2 This residential allotment has an asset protection zone which prevents residential dwellings and structures from being located within in the part of the allotment which exceeds a BAL rating of BAL-29.



Lot number	BAL rating <sup>1</sup>	AS 3959-2018 construction requirements <sup>1</sup>
4169	BAL-LOW	There is insufficient risk to warrant specific construction requirements
4170	BAL-LOW	There is insufficient risk to warrant specific construction requirements
4171	BAL-LOW	There is insufficient risk to warrant specific construction requirements
4172	BAL-LOW	There is insufficient risk to warrant specific construction requirements
4173	BAL-LOW	There is insufficient risk to warrant specific construction requirements
4174	BAL-LOW	There is insufficient risk to warrant specific construction requirements
4175	BAL-LOW	There is insufficient risk to warrant specific construction requirements
4176	BAL-LOW	There is insufficient risk to warrant specific construction requirements
4177	BAL-12.5	Sections 3 and 5
4178	BAL-12.5	Sections 3 and 5
4179	BAL-12.5	Sections 3 and 5
4180	BAL-19	Sections 3 and 6
4181	BAL-19	Sections 3 and 6
4182	BAL-19	Sections 3 and 6
4183	BAL-19	Sections 3 and 6
4184	BAL-19	Sections 3 and 6
4185	BAL-19	Sections 3 and 6
4186	BAL-19	Sections 3 and 6
4187	BAL-19	Sections 3 and 6
4188	BAL-19	Sections 3 and 6
4189	BAL-12.5	Sections 3 and 5
4190	BAL-12.5	Sections 3 and 5
4191	BAL-LOW	There is insufficient risk to warrant specific construction requirements
4192	BAL-LOW	There is insufficient risk to warrant specific construction requirements
4193	BAL-LOW	There is insufficient risk to warrant specific construction requirements
4194	BAL-LOW	There is insufficient risk to warrant specific construction requirements
4195	BAL-LOW	There is insufficient risk to warrant specific construction requirements
4196	BAL-LOW	There is insufficient risk to warrant specific construction requirements

**Notes** 1 BAL rating and BAL construction requirements are only relevant to *Overall Plan of Subdivision* - plan reference 110056-639, revision number D, dated 7 July 2025.  
2 This residential allotment has an asset protection zone which prevents residential dwellings and structures from being located within in the part of the allotment which exceeds a BAL rating of BAL-29.

Lot number	BAL rating <sup>1</sup>	AS 3959-2018 construction requirements <sup>1</sup>
4197	BAL-LOW	There is insufficient risk to warrant specific construction requirements
4198	BAL-LOW	There is insufficient risk to warrant specific construction requirements
4199	BAL-LOW	There is insufficient risk to warrant specific construction requirements
4200	BAL-LOW	There is insufficient risk to warrant specific construction requirements
4201	BAL-LOW	There is insufficient risk to warrant specific construction requirements
4202	BAL-LOW	There is insufficient risk to warrant specific construction requirements
4203	No allotment	-
4204	No allotment	-
4205	No allotment	-
4206	BAL-29 <sup>2</sup>	Sections 3 and 7
4207	BAL-29 <sup>2</sup>	Sections 3 and 7
4208	BAL-29 <sup>2</sup>	Sections 3 and 7
4209	BAL-29 <sup>2</sup>	Sections 3 and 7
4210	BAL-29 <sup>2</sup>	Sections 3 and 7
4211	No allotment	-
4212	No allotment	-
4213	No allotment	-
4214	No allotment	-
4215	No allotment	-
4216	BAL-LOW	There is insufficient risk to warrant specific construction requirements
4217	BAL-LOW	There is insufficient risk to warrant specific construction requirements
4218	BAL-29 <sup>2</sup>	Sections 3 and 7
4219	BAL-29 <sup>2</sup>	Sections 3 and 7
4220	BAL-29 <sup>2</sup>	Sections 3 and 7
4221	BAL-29 <sup>2</sup>	Sections 3 and 7
4222	BAL-29 <sup>2</sup>	Sections 3 and 7
4223	BAL-29 <sup>2</sup>	Sections 3 and 7
4224	BAL-29 <sup>2</sup>	Sections 3 and 7
4225	BAL-29 <sup>2</sup>	Sections 3 and 7
4226	BAL-29 <sup>2</sup>	Sections 3 and 7
4227	BAL-LOW	There is insufficient risk to warrant specific construction requirements

**Notes** 1 BAL rating and BAL construction requirements are only relevant to *Overall Plan of Subdivision* - plan reference 110056-639, revision number D, dated 7 July 2025.

2 This residential allotment has an asset protection zone which prevents residential dwellings and structures from being located within in the part of the allotment which exceeds a BAL rating of BAL-29.

Lot number	BAL rating <sup>1</sup>	AS 3959-2018 construction requirements <sup>1</sup>
4228	BAL-LOW	There is insufficient risk to warrant specific construction requirements
4229	BAL-29 <sup>2</sup>	Sections 3 and 7
4230	BAL-29 <sup>2</sup>	Sections 3 and 7
4231	BAL-29 <sup>2</sup>	Sections 3 and 7
4232	BAL-29 <sup>2</sup>	Sections 3 and 7
4233	BAL-29 <sup>2</sup>	Sections 3 and 7
4234	BAL-29 <sup>2</sup>	Sections 3 and 7
4235	BAL-29 <sup>2</sup>	Sections 3 and 7
4236	BAL-29 <sup>2</sup>	Sections 3 and 7
4237	BAL-29 <sup>2</sup>	Sections 3 and 7
4238	BAL-29 <sup>2</sup>	Sections 3 and 7
4239	BAL-LOW	There is insufficient risk to warrant specific construction requirements
4240	BAL-LOW	There is insufficient risk to warrant specific construction requirements
4241	BAL-LOW	There is insufficient risk to warrant specific construction requirements
4242	BAL-LOW	There is insufficient risk to warrant specific construction requirements
4243	BAL-LOW	There is insufficient risk to warrant specific construction requirements
4244	BAL-LOW	There is insufficient risk to warrant specific construction requirements
4245	BAL-LOW	There is insufficient risk to warrant specific construction requirements
4246	BAL-LOW	There is insufficient risk to warrant specific construction requirements
4247	BAL-LOW	There is insufficient risk to warrant specific construction requirements
4248	BAL-LOW	There is insufficient risk to warrant specific construction requirements
4249	BAL-LOW	There is insufficient risk to warrant specific construction requirements
4250	BAL-LOW	There is insufficient risk to warrant specific construction requirements
4251	BAL-LOW	There is insufficient risk to warrant specific construction requirements
4252	BAL-LOW	There is insufficient risk to warrant specific construction requirements
4253	BAL-LOW	There is insufficient risk to warrant specific construction requirements

**Notes** 1 BAL rating and BAL construction requirements are only relevant to *Overall Plan of Subdivision* - plan reference 110056-639, revision number D, dated 7 July 2025.  
2 This residential allotment has an asset protection zone which prevents residential dwellings and structures from being located within in the part of the allotment which exceeds a BAL rating of BAL-29.

Lot number	BAL rating <sup>1</sup>	AS 3959-2018 construction requirements <sup>1</sup>
4254	BAL-LOW	There is insufficient risk to warrant specific construction requirements
4255	BAL-LOW	There is insufficient risk to warrant specific construction requirements
4256	BAL-LOW	There is insufficient risk to warrant specific construction requirements
4257	BAL-LOW	There is insufficient risk to warrant specific construction requirements
4258	BAL-LOW	There is insufficient risk to warrant specific construction requirements
4259	BAL-LOW	There is insufficient risk to warrant specific construction requirements
4260	BAL-LOW	There is insufficient risk to warrant specific construction requirements
4261	BAL-LOW	There is insufficient risk to warrant specific construction requirements
4262	BAL-LOW	There is insufficient risk to warrant specific construction requirements
4263	BAL-LOW	There is insufficient risk to warrant specific construction requirements
4264	BAL-LOW	There is insufficient risk to warrant specific construction requirements
4265	BAL-LOW	There is insufficient risk to warrant specific construction requirements
4266	BAL-LOW	There is insufficient risk to warrant specific construction requirements
4267	BAL-LOW	There is insufficient risk to warrant specific construction requirements
4268	BAL-LOW	There is insufficient risk to warrant specific construction requirements
4269	BAL-LOW	There is insufficient risk to warrant specific construction requirements
4270	BAL-LOW	There is insufficient risk to warrant specific construction requirements
4271	BAL-LOW	There is insufficient risk to warrant specific construction requirements
4272	BAL-LOW	There is insufficient risk to warrant specific construction requirements
4273	BAL-LOW	There is insufficient risk to warrant specific construction requirements
4274	BAL-LOW	There is insufficient risk to warrant specific construction requirements
4275	BAL-LOW	There is insufficient risk to warrant specific construction requirements

**Notes** 1 BAL rating and BAL construction requirements are only relevant to *Overall Plan of Subdivision* - plan reference 110056-639, revision number D, dated 7 July 2025.  
2 This residential allotment has an asset protection zone which prevents residential dwellings and structures from being located within in the part of the allotment which exceeds a BAL rating of BAL-29.

Lot number	BAL rating <sup>1</sup>	AS 3959-2018 construction requirements <sup>1</sup>
4276	BAL-LOW	There is insufficient risk to warrant specific construction requirements
4277	BAL-LOW	There is insufficient risk to warrant specific construction requirements
4278	BAL-LOW	There is insufficient risk to warrant specific construction requirements
4279	BAL-LOW	There is insufficient risk to warrant specific construction requirements
4280	BAL-LOW	There is insufficient risk to warrant specific construction requirements
4281	BAL-LOW	There is insufficient risk to warrant specific construction requirements
4282	BAL-LOW	There is insufficient risk to warrant specific construction requirements
4283	BAL-LOW	There is insufficient risk to warrant specific construction requirements
4284	BAL-LOW	There is insufficient risk to warrant specific construction requirements
4285	BAL-LOW	There is insufficient risk to warrant specific construction requirements
4286	BAL-LOW	There is insufficient risk to warrant specific construction requirements
4287	BAL-LOW	There is insufficient risk to warrant specific construction requirements
4288	BAL-LOW	There is insufficient risk to warrant specific construction requirements
4289	BAL-LOW	There is insufficient risk to warrant specific construction requirements
4290	BAL-LOW	There is insufficient risk to warrant specific construction requirements
4291	BAL-LOW	There is insufficient risk to warrant specific construction requirements
4292	BAL-LOW	There is insufficient risk to warrant specific construction requirements
4293	BAL-LOW	There is insufficient risk to warrant specific construction requirements
4294	BAL-LOW	There is insufficient risk to warrant specific construction requirements
4295	BAL-LOW	There is insufficient risk to warrant specific construction requirements
4296	BAL-LOW	There is insufficient risk to warrant specific construction requirements
4297	BAL-LOW	There is insufficient risk to warrant specific construction requirements

**Notes** 1 BAL rating and BAL construction requirements are only relevant to *Overall Plan of Subdivision* - plan reference 110056-639, revision number D, dated 7 July 2025.  
2 This residential allotment has an asset protection zone which prevents residential dwellings and structures from being located within in the part of the allotment which exceeds a BAL rating of BAL-29.

Lot number	BAL rating <sup>1</sup>	AS 3959-2018 construction requirements <sup>1</sup>
4298	BAL-LOW	There is insufficient risk to warrant specific construction requirements
4299	BAL-LOW	There is insufficient risk to warrant specific construction requirements
4300	BAL-LOW	There is insufficient risk to warrant specific construction requirements
4301	BAL-LOW	There is insufficient risk to warrant specific construction requirements
4302	BAL-LOW	There is insufficient risk to warrant specific construction requirements
4303	BAL-LOW	There is insufficient risk to warrant specific construction requirements
4304	BAL-LOW	There is insufficient risk to warrant specific construction requirements
4305	BAL-LOW	There is insufficient risk to warrant specific construction requirements
4306	BAL-LOW	There is insufficient risk to warrant specific construction requirements
4307	BAL-LOW	There is insufficient risk to warrant specific construction requirements
4308	BAL-LOW	There is insufficient risk to warrant specific construction requirements
4309	BAL-LOW	There is insufficient risk to warrant specific construction requirements
4310	BAL-LOW	There is insufficient risk to warrant specific construction requirements
4311	BAL-LOW	There is insufficient risk to warrant specific construction requirements
4312	BAL-LOW	There is insufficient risk to warrant specific construction requirements
4313	BAL-LOW	There is insufficient risk to warrant specific construction requirements
4314	BAL-LOW	There is insufficient risk to warrant specific construction requirements
4315	BAL-LOW	There is insufficient risk to warrant specific construction requirements
4316	BAL-LOW	There is insufficient risk to warrant specific construction requirements
4317	BAL-LOW	There is insufficient risk to warrant specific construction requirements
4318	BAL-LOW	There is insufficient risk to warrant specific construction requirements
4319	BAL-LOW	There is insufficient risk to warrant specific construction requirements

**Notes** 1 BAL rating and BAL construction requirements are only relevant to *Overall Plan of Subdivision* - plan reference 110056-639, revision number D, dated 7 July 2025.  
2 This residential allotment has an asset protection zone which prevents residential dwellings and structures from being located within in the part of the allotment which exceeds a BAL rating of BAL-29.

Lot number	BAL rating <sup>1</sup>	AS 3959-2018 construction requirements <sup>1</sup>
4320	BAL-LOW	There is insufficient risk to warrant specific construction requirements
4321	BAL-LOW	There is insufficient risk to warrant specific construction requirements
4322	BAL-LOW	There is insufficient risk to warrant specific construction requirements
4323	BAL-LOW	There is insufficient risk to warrant specific construction requirements
4324	BAL-12.5	Sections 3 and 5
4325	BAL-12.5	Sections 3 and 5
4326	BAL-12.5	Sections 3 and 5
4327	BAL-12.5	Sections 3 and 5
4328	BAL-12.5	Sections 3 and 5
4329	BAL-12.5	Sections 3 and 5
4330	BAL-12.5	Sections 3 and 5
4331	BAL-12.5	Sections 3 and 5
4332	BAL-12.5	Sections 3 and 5
4333	BAL-12.5	Sections 3 and 5
4334	BAL-12.5	Sections 3 and 5
4335	BAL-12.5	Sections 3 and 5
4336	BAL-12.5	Sections 3 and 5
4337	BAL-12.5	Sections 3 and 5
4338	BAL-12.5	Sections 3 and 5
4339	BAL-12.5	Sections 3 and 5
4340	BAL-12.5	Sections 3 and 5
4341	BAL-12.5	Sections 3 and 5
4342	BAL-12.5	Sections 3 and 5
4343	BAL-LOW	There is insufficient risk to warrant specific construction requirements
4344	BAL-LOW	There is insufficient risk to warrant specific construction requirements
4345	BAL-12.5	Sections 3 and 5
4346	BAL-12.5	Sections 3 and 5
4347	BAL-12.5	Sections 3 and 5
4348	BAL-19	Sections 3 and 6
4349	BAL-19	Sections 3 and 6
4350	BAL-29	Sections 3 and 7
4351	BAL-29	Sections 3 and 7
4352	BAL-29	Sections 3 and 7

**Notes** 1 BAL rating and BAL construction requirements are only relevant to *Overall Plan of Subdivision* - plan reference 110056-639, revision number D, dated 7 July 2025.

2 This residential allotment has an asset protection zone which prevents residential dwellings and structures from being located within in the part of the allotment which exceeds a BAL rating of BAL-29.



Lot number	BAL rating <sup>1</sup>	AS 3959-2018 construction requirements <sup>1</sup>
4353	BAL-29	Sections 3 and 7
4354	BAL-29	Sections 3 and 7
4355	BAL-12.5	Sections 3 and 5
4356	BAL-12.5	Sections 3 and 5
4357	BAL-12.5	Sections 3 and 5
4358	BAL-12.5	Sections 3 and 5
4359	BAL-LOW	There is insufficient risk to warrant specific construction requirements
4360	BAL-LOW	There is insufficient risk to warrant specific construction requirements
4361	BAL-12.5	Sections 3 and 5
4362	BAL-12.5	Sections 3 and 5
4363	BAL-12.5	Sections 3 and 5
4364	BAL-12.5	Sections 3 and 5
4365	BAL-29	Sections 3 and 7
4366	BAL-29	Sections 3 and 7
4367	BAL-29	Sections 3 and 7
4368	BAL-29	Sections 3 and 7
4369	BAL-29	Sections 3 and 7
4370	BAL-29	Sections 3 and 7
4371	BAL-29	Sections 3 and 7
4372	BAL-12.5	Sections 3 and 5
4373	BAL-12.5	Sections 3 and 5
4374	BAL-12.5	Sections 3 and 5
4375	BAL-12.5	Sections 3 and 5
4376	BAL-LOW	There is insufficient risk to warrant specific construction requirements
4377	BAL-LOW	There is insufficient risk to warrant specific construction requirements
4378	BAL-12.5	Sections 3 and 5
4379	BAL-12.5	Sections 3 and 5
4380	BAL-12.5	Sections 3 and 5
4381	BAL-12.5	Sections 3 and 5
4382	BAL-12.5	Sections 3 and 5
4383	BAL-12.5	Sections 3 and 5
4384	BAL-19	Sections 3 and 6
4385	BAL-29	Sections 3 and 7
4386	BAL-12.5	Sections 3 and 5
4387	BAL-12.5	Sections 3 and 5

**Notes** 1 BAL rating and BAL construction requirements are only relevant to *Overall Plan of Subdivision* - plan reference 110056-639, revision number D, dated 7 July 2025.

2 This residential allotment has an asset protection zone which prevents residential dwellings and structures from being located within in the part of the allotment which exceeds a BAL rating of BAL-29.

Lot number	BAL rating <sup>1</sup>	AS 3959-2018 construction requirements <sup>1</sup>
4388	BAL-29	Sections 3 and 7
4389	BAL-19	Sections 3 and 6
4390	BAL-12.5	Sections 3 and 5
4391	BAL-12.5	Sections 3 and 5
4392	BAL-12.5	Sections 3 and 5
4393	BAL-12.5	Sections 3 and 5
4394	BAL-12.5	Sections 3 and 5
4395	BAL-12.5	Sections 3 and 5
4396	BAL-LOW	There is insufficient risk to warrant specific construction requirements
4397	BAL-29	Sections 3 and 7
4398	BAL-29	Sections 3 and 7
4399	BAL-29	Sections 3 and 7
4400	BAL-29	Sections 3 and 7
4401	BAL-29	Sections 3 and 7
4402	BAL-29	Sections 3 and 7
4403	BAL-19	Sections 3 and 6
4404	BAL-12.5	Sections 3 and 5
4405	BAL-12.5	Sections 3 and 5
4406	BAL-12.5	Sections 3 and 5
4407	BAL-12.5	Sections 3 and 5
4408	BAL-LOW	There is insufficient risk to warrant specific construction requirements
4409	BAL-LOW	There is insufficient risk to warrant specific construction requirements
4410	BAL-LOW	There is insufficient risk to warrant specific construction requirements
4411	BAL-LOW	There is insufficient risk to warrant specific construction requirements
4412	BAL-LOW	There is insufficient risk to warrant specific construction requirements
4413	BAL-LOW	There is insufficient risk to warrant specific construction requirements
4414	BAL-LOW	There is insufficient risk to warrant specific construction requirements
4415	BAL-LOW	There is insufficient risk to warrant specific construction requirements
4416	BAL-LOW	There is insufficient risk to warrant specific construction requirements
4417	BAL-LOW	There is insufficient risk to warrant specific construction requirements

**Notes** 1 BAL rating and BAL construction requirements are only relevant to *Overall Plan of Subdivision* - plan reference 110056-639, revision number D, dated 7 July 2025.

2 This residential allotment has an asset protection zone which prevents residential dwellings and structures from being located within in the part of the allotment which exceeds a BAL rating of BAL-29.

Lot number	BAL rating <sup>1</sup>	AS 3959-2018 construction requirements <sup>1</sup>
4418	BAL-LOW	There is insufficient risk to warrant specific construction requirements
4419	BAL-LOW	There is insufficient risk to warrant specific construction requirements
4420	BAL-LOW	There is insufficient risk to warrant specific construction requirements
4421	BAL-LOW	There is insufficient risk to warrant specific construction requirements
4422	BAL-LOW	There is insufficient risk to warrant specific construction requirements
4423	BAL-LOW	There is insufficient risk to warrant specific construction requirements
4424	BAL-LOW	There is insufficient risk to warrant specific construction requirements
4425	BAL-LOW	There is insufficient risk to warrant specific construction requirements
4426	BAL-LOW	There is insufficient risk to warrant specific construction requirements
4427	BAL-LOW	There is insufficient risk to warrant specific construction requirements
4428	BAL-LOW	There is insufficient risk to warrant specific construction requirements
4429	BAL-LOW	There is insufficient risk to warrant specific construction requirements
4430	BAL-LOW	There is insufficient risk to warrant specific construction requirements
4431	BAL-LOW	There is insufficient risk to warrant specific construction requirements
4432	BAL-LOW	There is insufficient risk to warrant specific construction requirements
4433	BAL-LOW	There is insufficient risk to warrant specific construction requirements
4434	BAL-LOW	There is insufficient risk to warrant specific construction requirements
4435	BAL-LOW	There is insufficient risk to warrant specific construction requirements
4436	BAL-LOW	There is insufficient risk to warrant specific construction requirements
4437	BAL-LOW	There is insufficient risk to warrant specific construction requirements
4438	BAL-LOW	There is insufficient risk to warrant specific construction requirements
4439	BAL-LOW	There is insufficient risk to warrant specific construction requirements

**Notes** 1 BAL rating and BAL construction requirements are only relevant to *Overall Plan of Subdivision* - plan reference 110056-639, revision number D, dated 7 July 2025.  
2 This residential allotment has an asset protection zone which prevents residential dwellings and structures from being located within in the part of the allotment which exceeds a BAL rating of BAL-29.

Lot number	BAL rating <sup>1</sup>	AS 3959-2018 construction requirements <sup>1</sup>
4440	BAL-LOW	There is insufficient risk to warrant specific construction requirements
4441	BAL-LOW	There is insufficient risk to warrant specific construction requirements
4442	BAL-LOW	There is insufficient risk to warrant specific construction requirements
4443	BAL-LOW	There is insufficient risk to warrant specific construction requirements
4444	BAL-LOW	There is insufficient risk to warrant specific construction requirements
4445	BAL-LOW	There is insufficient risk to warrant specific construction requirements
4446	BAL-LOW	There is insufficient risk to warrant specific construction requirements
4447	BAL-12.5	Sections 3 and 5
4448	BAL-12.5	Sections 3 and 5
4449	BAL-12.5	Sections 3 and 5
4450	BAL-12.5	Sections 3 and 5
4451	BAL-12.5	Sections 3 and 5
4452	BAL-12.5	Sections 3 and 5
4453	BAL-12.5	Sections 3 and 5
4454	BAL-12.5	Sections 3 and 5
4455	BAL-12.5	Sections 3 and 5
4456	BAL-LOW	There is insufficient risk to warrant specific construction requirements
4457	BAL-12.5	Sections 3 and 5
4458	BAL-12.5	Sections 3 and 5
4459	BAL-12.5	Sections 3 and 5
4460	BAL-12.5	Sections 3 and 5
4461	BAL-19	Sections 3 and 6
4462	BAL-19	Sections 3 and 6
4463	BAL-19	Sections 3 and 6
4464	BAL-19	Sections 3 and 6
4465	BAL-19	Sections 3 and 6
4466	BAL-19	Sections 3 and 6
4467	BAL-19	Sections 3 and 6
4468	BAL-19	Sections 3 and 6
4469	BAL-19	Sections 3 and 6
4470	BAL-19	Sections 3 and 6
4471	BAL-19	Sections 3 and 6

**Notes** 1 BAL rating and BAL construction requirements are only relevant to *Overall Plan of Subdivision* - plan reference 110056-639, revision number D, dated 7 July 2025.

2 This residential allotment has an asset protection zone which prevents residential dwellings and structures from being located within in the part of the allotment which exceeds a BAL rating of BAL-29.

Lot number	BAL rating <sup>1</sup>	AS 3959-2018 construction requirements <sup>1</sup>
4472	BAL-19	Sections 3 and 6
4473	BAL-19	Sections 3 and 6
4474	BAL-19	Sections 3 and 6
4475	BAL-19	Sections 3 and 6
4476	BAL-19	Sections 3 and 6
4477	BAL-19	Sections 3 and 6
4478	BAL-19	Sections 3 and 6
4479	BAL-19	Sections 3 and 6
4480	BAL-19	Sections 3 and 6
4481	BAL-19	Sections 3 and 6
4482	BAL-19	Sections 3 and 6
4483	BAL-19	Sections 3 and 6
4484	BAL-19	Sections 3 and 6
4485	BAL-19	Sections 3 and 6
4486	BAL-19	Sections 3 and 6
4487	BAL-19	Sections 3 and 6
4488	BAL-19	Sections 3 and 6
4489	BAL-12.5	Sections 3 and 5
4490	BAL-12.5	Sections 3 and 5
4491	BAL-12.5	Sections 3 and 5
4492	BAL-12.5	Sections 3 and 5
4493	BAL-12.5	Sections 3 and 5
4494	BAL-12.5	Sections 3 and 5
4495	BAL-LOW	There is insufficient risk to warrant specific construction requirements
4496	BAL-LOW	There is insufficient risk to warrant specific construction requirements
4497	BAL-LOW	There is insufficient risk to warrant specific construction requirements
4498	BAL-LOW	There is insufficient risk to warrant specific construction requirements
4499	BAL-LOW	There is insufficient risk to warrant specific construction requirements
4500	BAL-12.5	Sections 3 and 5
4501	BAL-12.5	Sections 3 and 5
4502	BAL-12.5	Sections 3 and 5
4503	BAL-12.5	Sections 3 and 5
4504	BAL-12.5	Sections 3 and 5
4505	BAL-12.5	Sections 3 and 5

**Notes** 1 BAL rating and BAL construction requirements are only relevant to *Overall Plan of Subdivision* - plan reference 110056-639, revision number D, dated 7 July 2025.

2 This residential allotment has an asset protection zone which prevents residential dwellings and structures from being located within in the part of the allotment which exceeds a BAL rating of BAL-29.

Lot number	BAL rating <sup>1</sup>	AS 3959-2018 construction requirements <sup>1</sup>
4506	No allotment	-
4507	BAL-12.5	Sections 3 and 5
4508	BAL-LOW	There is insufficient risk to warrant specific construction requirements
4509	BAL-LOW	There is insufficient risk to warrant specific construction requirements
4510	BAL-LOW	There is insufficient risk to warrant specific construction requirements
4511	BAL-LOW	There is insufficient risk to warrant specific construction requirements
4512	BAL-LOW	There is insufficient risk to warrant specific construction requirements
4513	BAL-LOW	There is insufficient risk to warrant specific construction requirements
4514	BAL-LOW	There is insufficient risk to warrant specific construction requirements
4515	BAL-LOW	There is insufficient risk to warrant specific construction requirements
4516	BAL-LOW	There is insufficient risk to warrant specific construction requirements
4517	BAL-12.5	Sections 3 and 5
4518	BAL-12.5	Sections 3 and 5
4519	BAL-12.5	Sections 3 and 5
4520	BAL-12.5	Sections 3 and 5
4521	BAL-12.5	Sections 3 and 5
4522	BAL-12.5	Sections 3 and 5
4523	BAL-12.5	Sections 3 and 5
4524	BAL-12.5	Sections 3 and 5
4525	BAL-12.5	Sections 3 and 5
4526	BAL-12.5	Sections 3 and 5
4527	BAL-12.5	Sections 3 and 5
4528	BAL-12.5	Sections 3 and 5
4529	BAL-12.5	Sections 3 and 5
4530	BAL-12.5	Sections 3 and 5
4531	BAL-12.5	Sections 3 and 5
4532	BAL-LOW	There is insufficient risk to warrant specific construction requirements
4533	BAL-LOW	There is insufficient risk to warrant specific construction requirements
4534	BAL-LOW	There is insufficient risk to warrant specific construction requirements

**Notes** 1 BAL rating and BAL construction requirements are only relevant to *Overall Plan of Subdivision* - plan reference 110056-639, revision number D, dated 7 July 2025.  
2 This residential allotment has an asset protection zone which prevents residential dwellings and structures from being located within in the part of the allotment which exceeds a BAL rating of BAL-29.

Lot number	BAL rating <sup>1</sup>	AS 3959-2018 construction requirements <sup>1</sup>
4535	BAL-LOW	There is insufficient risk to warrant specific construction requirements
4536	BAL-LOW	There is insufficient risk to warrant specific construction requirements
4537	BAL-LOW	There is insufficient risk to warrant specific construction requirements
4538	BAL-LOW	There is insufficient risk to warrant specific construction requirements
4539	BAL-LOW	There is insufficient risk to warrant specific construction requirements
4540	BAL-LOW	There is insufficient risk to warrant specific construction requirements
4541	BAL-LOW	There is insufficient risk to warrant specific construction requirements
4542	BAL-LOW	There is insufficient risk to warrant specific construction requirements
4543	BAL-LOW	There is insufficient risk to warrant specific construction requirements
4544	BAL-LOW	There is insufficient risk to warrant specific construction requirements
4545	BAL-LOW	There is insufficient risk to warrant specific construction requirements
4546	BAL-LOW	There is insufficient risk to warrant specific construction requirements
4547	BAL-LOW	There is insufficient risk to warrant specific construction requirements
4548	BAL-LOW	There is insufficient risk to warrant specific construction requirements
4549	BAL-LOW	There is insufficient risk to warrant specific construction requirements
4550	BAL-LOW	There is insufficient risk to warrant specific construction requirements
4551	BAL-LOW	There is insufficient risk to warrant specific construction requirements
4552	BAL-LOW	There is insufficient risk to warrant specific construction requirements
4553	BAL-12.5	Sections 3 and 5
4554	BAL-12.5	Sections 3 and 5
4555	BAL-12.5	Sections 3 and 5
4556	BAL-12.5	Sections 3 and 5
4557	BAL-12.5	Sections 3 and 5
4558	BAL-12.5	Sections 3 and 5
4559	BAL-12.5	Sections 3 and 5

**Notes** 1 BAL rating and BAL construction requirements are only relevant to *Overall Plan of Subdivision* - plan reference 110056-639, revision number D, dated 7 July 2025.  
2 This residential allotment has an asset protection zone which prevents residential dwellings and structures from being located within in the part of the allotment which exceeds a BAL rating of BAL-29.



Lot number	BAL rating <sup>1</sup>	AS 3959-2018 construction requirements <sup>1</sup>
4560	BAL-LOW	There is insufficient risk to warrant specific construction requirements
4561	BAL-LOW	There is insufficient risk to warrant specific construction requirements
4562	BAL-LOW	There is insufficient risk to warrant specific construction requirements
4563	BAL-LOW	There is insufficient risk to warrant specific construction requirements
4564	BAL-12.5	Sections 3 and 5
4565	BAL-12.5	Sections 3 and 5
4566	BAL-LOW	There is insufficient risk to warrant specific construction requirements
4567	BAL-LOW	There is insufficient risk to warrant specific construction requirements
4568	BAL-LOW	There is insufficient risk to warrant specific construction requirements
4569	BAL-LOW	There is insufficient risk to warrant specific construction requirements
4570	BAL-LOW	There is insufficient risk to warrant specific construction requirements
4571	BAL-LOW	There is insufficient risk to warrant specific construction requirements
4572	BAL-LOW	There is insufficient risk to warrant specific construction requirements
4573	BAL-LOW	There is insufficient risk to warrant specific construction requirements
4574	BAL-LOW	There is insufficient risk to warrant specific construction requirements
4575	BAL-LOW	There is insufficient risk to warrant specific construction requirements
4576	BAL-12.5	Sections 3 and 5
4577	BAL-12.5	Sections 3 and 5
4578	BAL-LOW	There is insufficient risk to warrant specific construction requirements
4579	BAL-LOW	There is insufficient risk to warrant specific construction requirements
4580	BAL-LOW	There is insufficient risk to warrant specific construction requirements
4581	BAL-LOW	There is insufficient risk to warrant specific construction requirements
4582	BAL-LOW	There is insufficient risk to warrant specific construction requirements
4583	BAL-LOW	There is insufficient risk to warrant specific construction requirements

**Notes** 1 BAL rating and BAL construction requirements are only relevant to *Overall Plan of Subdivision* - plan reference 110056-639, revision number D, dated 7 July 2025.  
2 This residential allotment has an asset protection zone which prevents residential dwellings and structures from being located within in the part of the allotment which exceeds a BAL rating of BAL-29.

Lot number	BAL rating <sup>1</sup>	AS 3959-2018 construction requirements <sup>1</sup>
4584	BAL-LOW	There is insufficient risk to warrant specific construction requirements
4585	BAL-LOW	There is insufficient risk to warrant specific construction requirements
4586	BAL-LOW	There is insufficient risk to warrant specific construction requirements
4587	BAL-LOW	There is insufficient risk to warrant specific construction requirements
4588	BAL-12.5	Sections 3 and 5
4589	BAL-12.5	Sections 3 and 5
4590	BAL-12.5	Sections 3 and 5
4591	BAL-12.5	Sections 3 and 5
4592	BAL-19	Sections 3 and 6
4593	BAL-29	Sections 3 and 7
4594	BAL-29	Sections 3 and 7
4595	BAL-29	Sections 3 and 7
4596	BAL-29	Sections 3 and 7
4597	BAL-29	Sections 3 and 7
4598	BAL-29	Sections 3 and 7
4599	BAL-29	Sections 3 and 7
4600	BAL-29	Sections 3 and 7
4601	BAL-29	Sections 3 and 7
4602	BAL-29	Sections 3 and 7
4603	BAL-12.5	Sections 3 and 5
4604	BAL-12.5	Sections 3 and 5
4605	BAL-12.5	Sections 3 and 5
4606	BAL-12.5	Sections 3 and 5
4607	BAL-12.5	Sections 3 and 5
4608	BAL-12.5	Sections 3 and 5
4609	BAL-12.5	Sections 3 and 5
4610	BAL-12.5	Sections 3 and 5
4611	BAL-12.5	Sections 3 and 5
4612	BAL-12.5	Sections 3 and 5
4613	BAL-12.5	Sections 3 and 5
4614	BAL-29	Sections 3 and 7
4615	BAL-19	Sections 3 and 6
4616	BAL-12.5	Sections 3 and 5
4617	BAL-12.5	Sections 3 and 5
4618	BAL-12.5	Sections 3 and 5

**Notes** 1 BAL rating and BAL construction requirements are only relevant to *Overall Plan of Subdivision* - plan reference 110056-639, revision number D, dated 7 July 2025.

2 This residential allotment has an asset protection zone which prevents residential dwellings and structures from being located within in the part of the allotment which exceeds a BAL rating of BAL-29.

Lot number	BAL rating <sup>1</sup>	AS 3959-2018 construction requirements <sup>1</sup>
4619	BAL-12.5	Sections 3 and 5
4620	BAL-12.5	Sections 3 and 5
4621	BAL-12.5	Sections 3 and 5
4622	BAL-12.5	Sections 3 and 5
4623	BAL-12.5	Sections 3 and 5
4624	BAL-12.5	Sections 3 and 5
4625	BAL-29	Sections 3 and 7
4626	BAL-19	Sections 3 and 6
4627	BAL-19	Sections 3 and 6
4628	BAL-19	Sections 3 and 6
4629	BAL-19	Sections 3 and 6
4630	BAL-19	Sections 3 and 6
4631	BAL-19	Sections 3 and 6
4632	BAL-19	Sections 3 and 6
4633	BAL-19	Sections 3 and 6
4634	BAL-29	Sections 3 and 7
4635	BAL-12.5	Sections 3 and 5
4636	BAL-29 <sup>2</sup>	Sections 3 and 7
4637	BAL-29 <sup>2</sup>	Sections 3 and 7
4638	BAL-29 <sup>2</sup>	Sections 3 and 7
4639	BAL-29 <sup>2</sup>	Sections 3 and 7
4640	BAL-29 <sup>2</sup>	Sections 3 and 7
4641	BAL-29 <sup>2</sup>	Sections 3 and 7
4642	BAL-LOW	There is insufficient risk to warrant specific construction requirements
4643	BAL-LOW	There is insufficient risk to warrant specific construction requirements
4644	BAL-LOW	There is insufficient risk to warrant specific construction requirements
4645	BAL-12.5	Sections 3 and 5
4646	BAL-12.5	Sections 3 and 5
4647	BAL-12.5	Sections 3 and 5
4648	BAL-12.5	Sections 3 and 5
4649	BAL-LOW	There is insufficient risk to warrant specific construction requirements
4650	BAL-LOW	There is insufficient risk to warrant specific construction requirements
4651	BAL-LOW	There is insufficient risk to warrant specific construction requirements

**Notes** 1 BAL rating and BAL construction requirements are only relevant to *Overall Plan of Subdivision* - plan reference 110056-639, revision number D, dated 7 July 2025.

2 This residential allotment has an asset protection zone which prevents residential dwellings and structures from being located within in the part of the allotment which exceeds a BAL rating of BAL-29.

Lot number	BAL rating <sup>1</sup>	AS 3959-2018 construction requirements <sup>1</sup>
4652	No allotment	-
4653	BAL-12.5	Sections 3 and 5

DRAFT

#### **DRAFT ONLY – FOR INFORMATION PURPOSES**

This Preliminary BAL Contour Plan and BAL Rating Table is provided in draft form for information only. It must not be relied upon for property purchase, design, or construction decisions. Site conditions can vary, and the bushfire risk applicable to individual lots may differ from that shown. All purchasers must obtain their own independent bushfire assessment and advice from a qualified professional prior to making any purchase or development decisions. The document is not approved and is indicative only. This document does not form part of contract documentation. The developer and its consultants accept no responsibility for reliance on this document.

- Notes**
- 1 BAL rating and BAL construction requirements are only relevant to *Overall Plan of Subdivision* - plan reference 110056-639, revision number D, dated 7 July 2025.
  - 2 This residential allotment has an asset protection zone which prevents residential dwellings and structures from being located within in the part of the allotment which exceeds a BAL rating of BAL-29.