



*Price is subject to change and availability.

The Jurian by Redink Homes - Movida Estate Stage 9 by Redink Homes

4 2 2 Home Size: 245sqm



Lot 633 Elsternwick Grove (375sqm)

This beautiful federation inspired homes is the perfect design for your indoor / outdoor entertaining.

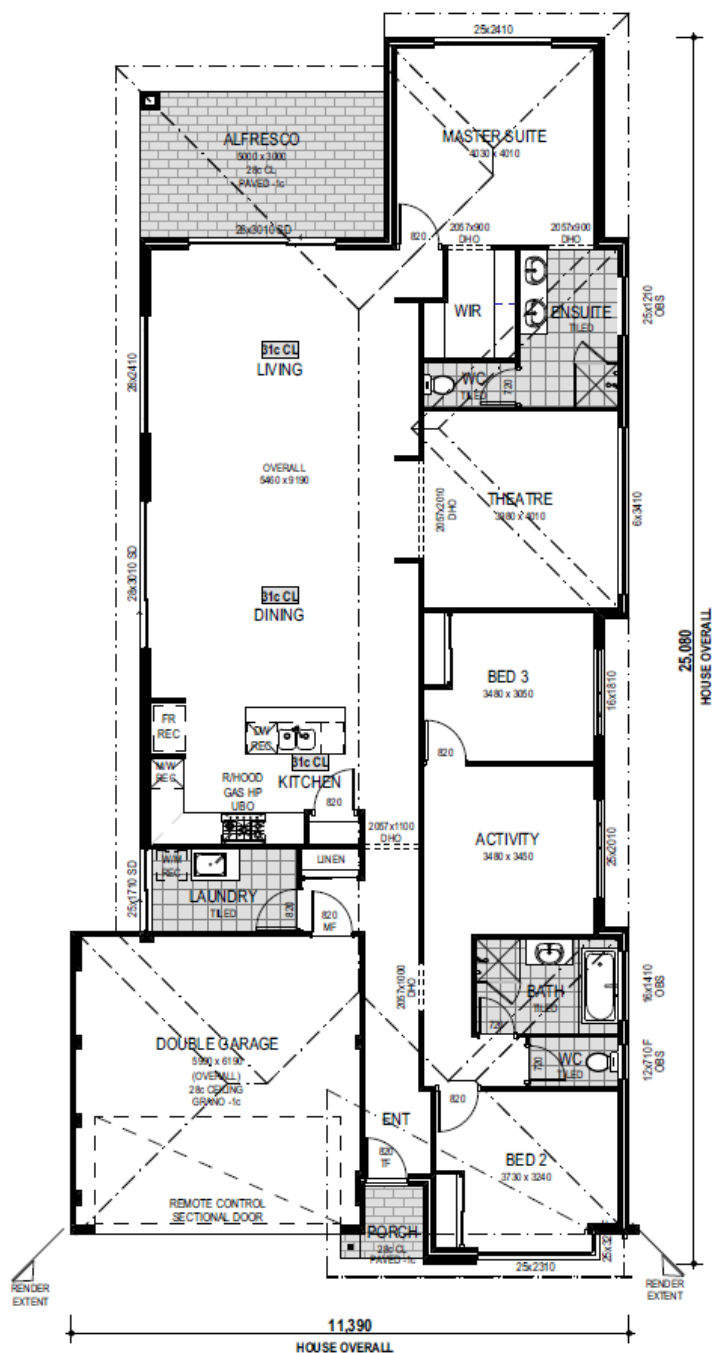
Inspired by the 1970s, this home brings in the old with the new with a funky front elevation. Including 4 bedrooms, 2 bathrooms and a large kitchen this home is perfect for any family.

Features of the "Jurian" include but are not limited to

- Air conditioning
- Stone benchtop to kitchen
- Double glazing throughout
- High ceilings throughout
- 900mm stainless steel appliances
- Soft closing cabinets throughout

For more information or to enquire about our growing community, please contact our friendly Sales Representative, Renee Monteleone.

The Jurian by Redink Homes - Movida Estate Stage 9 by Redink Homes Home Size: 245sqm Lot Size: 375sqm



*House and land sold separately. The entity holding a real estate licence which has been appointed by Peet Limited ABN 56 008 665 834 or a subsidiary of it to sell land within the applicable State or Territory acts as agent for the sale of the land only. Buyers must enter into a separate contract with the builder, and the builder is responsible for all matters relating to the building contract and the house. Prices shown may include rebates for the fulfilment of separate conditions under the land contract, and information provided by the builder may be subject to eligibility criteria and other terms and conditions. Buyers should review each of the land and building contracts carefully and make their own enquiries. It is recommended that buyers obtain independent advice before proceeding. Illustrations and information are intended to be indicative only and are believed to be correct at the time of publication. Peet Limited ABN 56 008 665 834 reserves the right to withdraw or alter any package at any time without notice at its absolute discretion. Estimated costs for the package are indicative only and other costs and fees are payable, including but not limited to: transfer (also known as stamp) duty, settlement/registration fees, legal/conveyancing fees, finance costs, site works, engagement of any consultants, approvals, connection for services and variations. Prices and lot information correct as at 30/04/2025).