



YANCHEP
GOLF ESTATE

**Our Unique
Landscape Vision**

PEET



Artist impression only

Naturally Connected

Nestled between the rolling fairways of Sun City Country Club and the leafy expanse of Yanchep National Park, Yanchep Golf Estate offers a truly unique lifestyle amongst stunning natural beauty.

PLENTY OF PARKS

There's nothing better than being outside on a sunny day, especially at one of Yanchep Golf Estate's many future landscaped parks. Boasting retained mature trees, green open spaces, playgrounds, walking and cycling trails, BBQ facilities and more, they're the perfect place to spend a weekend afternoon with family, or connect with your new neighbours.

KEEPING THE TREES

The stunning mature Tuart trees fringing the Sun City Country Club can also be found throughout the community, in the parks, reserves and homesites. Tree-lined streets will seamlessly connect you to fellow residents, or you can relax on the unique street furniture designed from the estate's salvaged timber.

STUNNING VIEWS

An afternoon walk at Yanchep Golf Estate will treat you to a variety of stunning views across the green open spaces and the golf course. View corridors can be found through the streets and public access ways, from which you can even catch a glimpse of the stunning sunset in the afternoon.

CONNECTING WITH NATURE

Built from recycled timber, Yanchep Golf Estate's Nature Play has been designed from existing timber and other organic materials to complement the natural surrounds of the estate. The native gardens with retained mature trees

and vegetation teamed with a network of concrete and timber walkways not only connect you to the neighbourhood, but also connect you even closer to nature.

NATURALLY BETTER DESIGN

Yanchep Golf Estate has been designed to work seamlessly with the existing Sun City Country Club and the stunning natural surrounds of Yanchep National Park. Pocket parks and green open spaces throughout the estate will emulate the rolling fairways of the golf course, complemented by areas of retained native vegetation and mature Tuart trees. Plus, the estate was recently honoured to be shortlisted in the 2015 Australian Timber Development Association's Design Awards, thanks to its special Timber Wave Bench. The bench located at the entrance of the estate, was designed from recycled Ironbark to reflect the undulating landscape of the golf course.



Artist impression only

ESTATE PLAN



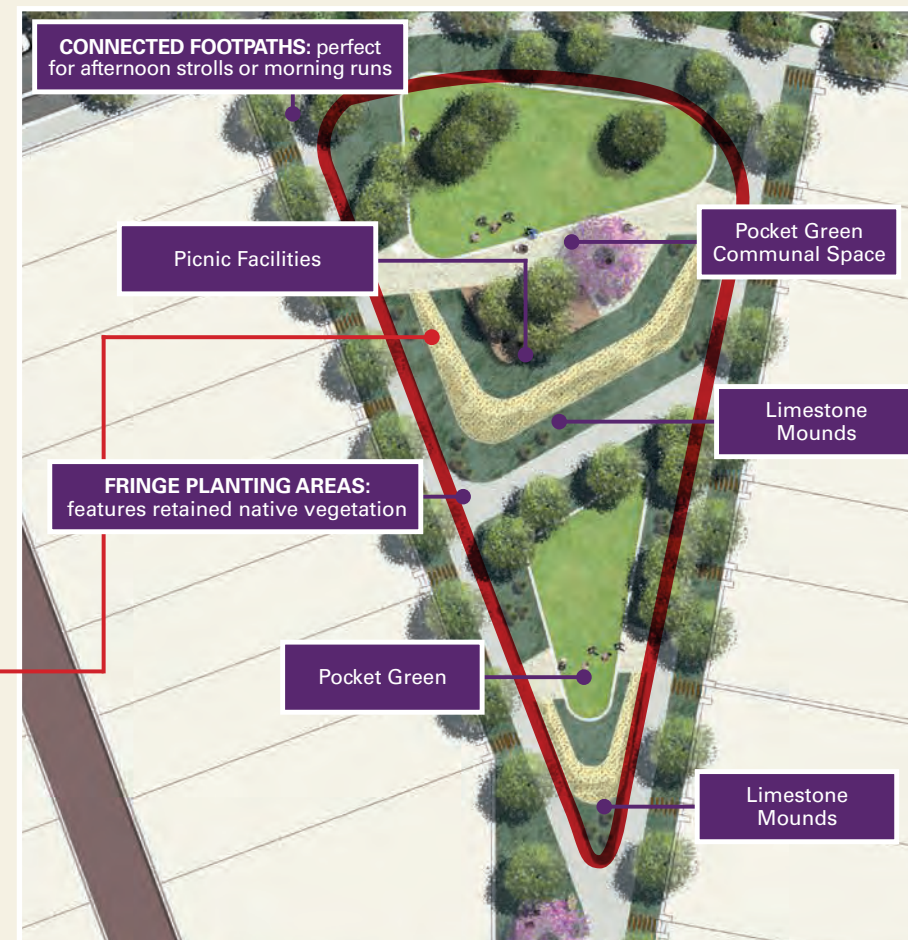
A place to play

Whether it's an afternoon game of footy, or letting the kids run wild at the special Nature Play area, you'll discover plenty of opportunities to run off some energy at your local park.

The recreational lawn areas provide an open field for keeping active and there are plenty of shaded tree areas to take a break and admire the natural surrounds.

The parks' Nature Play is one of a kind, designed from retained timber and other recycled natural materials, this playground works seamlessly with the stunning natural environment on offer at Yanchep Golf Estate.

Due for completion Spring 2015.



A place to relax

From sitting back with a relaxing family picnic, or enjoying an afternoon stroll, your local park is the perfect place to relax, make new friends and feel connected.

The communal area is equipped with picnic tables, seating and ample grassed areas, meaning you'll have plenty of room to entertain or simply relax and spend some time with nature.

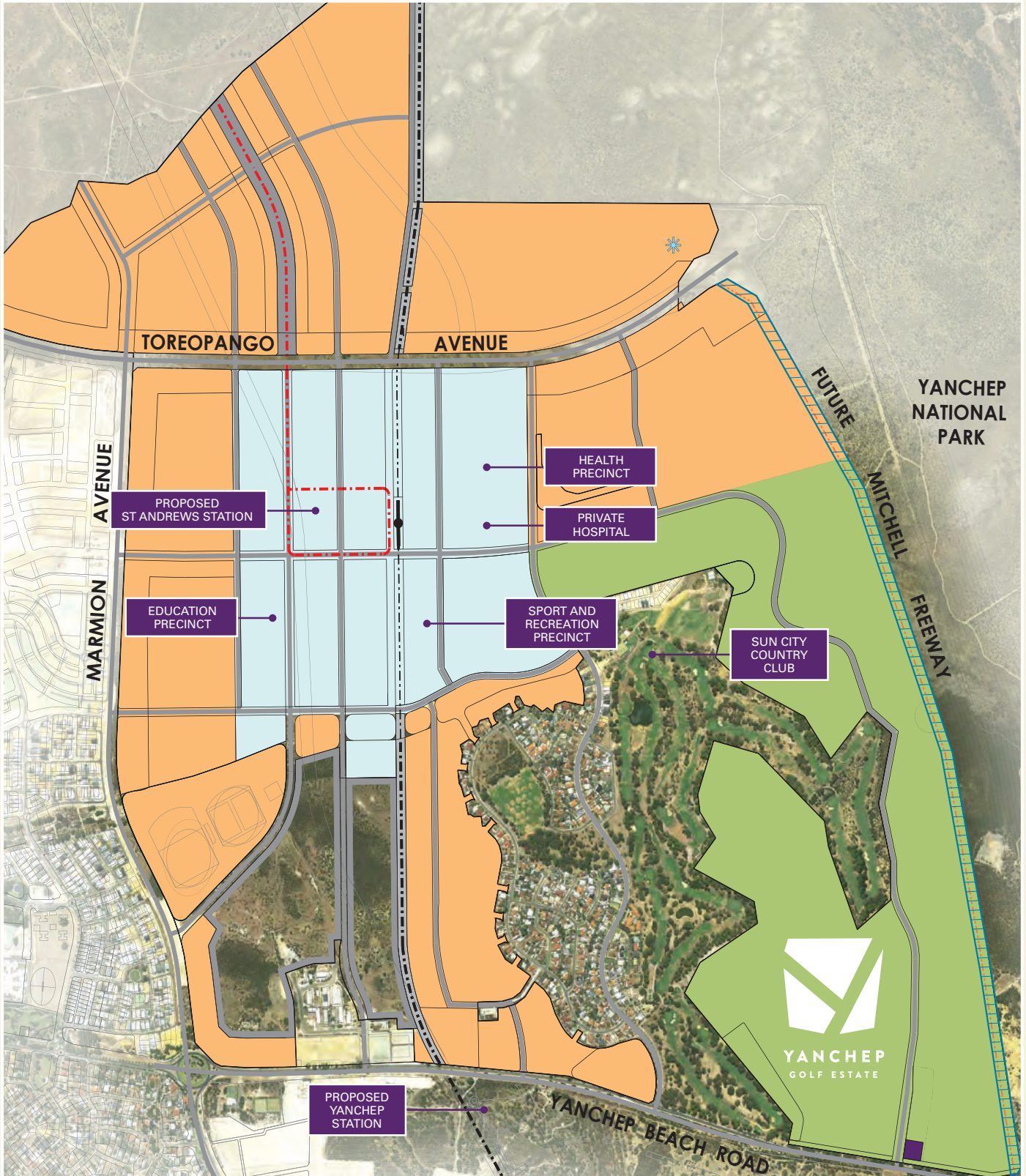
There are also opportunities to enjoy a morning jog or a relaxing afternoon stroll at the park's surrounding footpaths, which will also seamlessly connect you to the estate's streetscapes.

Due for completion Summer 2015.

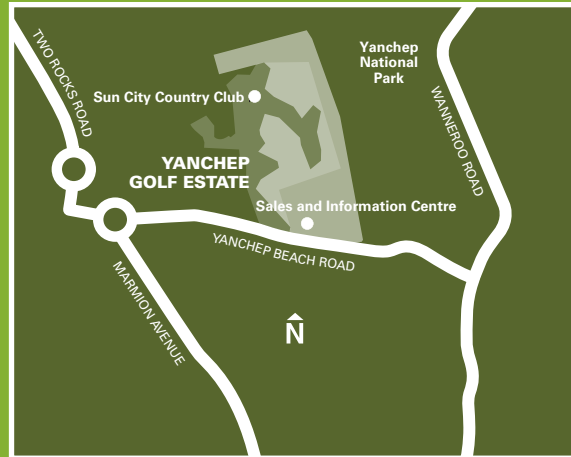
Whilst every care has been taken with the preparation of these particulars, which are believed to be correct, they are in no way warranted by the selling agent or its clients in whole or in part and should not be construed as forming part of any contract. Any intending purchasers are advised to make necessary enquiries to satisfy themselves on all matters in this respect. All areas and dimensions are subject to survey. Sales Agent: Peet Estates

MORE TO EXPLORE JUST AROUND THE CORNER

The Yanchep City Centre will be a primary centre and major employment anchor for the northern corridor. It is planned as a centre of excellence for innovative technologies and service-oriented industries, accommodating some 80ha of commercial and community use floorspace and nearly half of the total jobs for the project. A strategic, mixed-use transit corridor, flanked with employment, will connect this centre with other major activity centres.



- Yanchep City
- CBD Precinct
- Western Power Corridor
- - - Bus Route (indicative only)
- Yanchep Golf Estate
- Proposed Local Activity Centre
- Railway Line (indicative only)



SALES AND INFORMATION CENTRE

6 Parkland Drive, Yanchep (off Yanchep Beach Road)

Open: Saturday to Wednesday 1pm–5pm

Tel: 0438 382 060

yanchepgolfestate.com.au

PEET