

The logo for Shorehaven, featuring the word 'shorehaven' in a white, lowercase, script font. Below it, the word 'ALKIMOS' is written in a smaller, white, uppercase, sans-serif font. The background of the logo is a photograph of a modern, curved concrete walkway or ramp leading down to a sandy beach area, with green grass and trees in the background under a clear blue sky.

ALKIMOS

**WANT TO RECEIVE THIS  
NEWSLETTER ONLINE?**

Contact Eamonn Lourey at  
[Eamonn@creatingcommunities.com.au](mailto:Eamonn@creatingcommunities.com.au)  
or 9284 0910 with your name, email  
address and phone number.

Winter 2017

# Community Newsletter



Left: Shorehaven homeowner Darren Yates hard at work with the Forever Project team

## Forever Project garden ticks all the boxes

Shorehaven homeowner Darren Yates was one of the lucky recipients of a waterwise front garden installation by The Forever Project – a local WA organisation dedicated to inspiring and empowering the community to work towards a sustainable, happy and prosperous future.

Forever Project representative, Lisa Passmore, said the three-hour garden transformation went like clockwork.

"It's all in the preparation – we use high- quality products to prepare the ground – including organic fertiliser, premium soil conditioner with clay, and a soil wetter," said Lisa.

The garden design used lots of native plants as they flourish in the environmental conditions experienced at coastal locations like Shorehaven.

"This is one of the best gardens we have delivered and the exciting thing for the team and the homeowner is how the garden will transform again over the next 12 to 18 months as the young plants and trees mature," said Lisa.

Darren said he liked the idea of a low-maintenance waterwise garden.

"I'm really grateful that Peet has partnered with the Water Corporation to deliver this project. I look forward to seeing the plants and trees grow over the coming months and not having to spend lots of time gardening!" said Darren.

To find out more about The Forever Project and waterwise gardens visit [theforeverproject.com.au](http://theforeverproject.com.au).

## TOP 5 winter gardening tips!

As we head into the cooler months here are 5 top gardening tips for winter:

1. Apply a good layer of compost
2. Top up and be generous with good quality mulch
3. Don't forget weeding is still needed this time of year
4. Avoid fertilising during winter when roots are dormant
5. Move your tropical potted plants into a protected warm spot



# Development update

Welcome to the latest edition of the Shorehaven Newsletter. As we hit the mid-way point of 2017, it's a good time to reflect on the year to-date, and provide you with more detail on what's still to come.

Our landscape and maintenance contractor, Renoscape, continue to lift the presentation of the estate and have been paying close attention to the sand drift that results from the high level of winds we experience as a coastal community.

We're also pleased to advise that the landscaping contract for the Stage 6 oval in Rise has been awarded (read more in the article below) and we look forward to seeing that work completed over the coming months.

A bit further afield, it's great to see the progress of improvements to roads and infrastructure as growth continues in the northern corridor with upgrades to Marmion Avenue being completed ahead of schedule, and the extension of the Mitchell

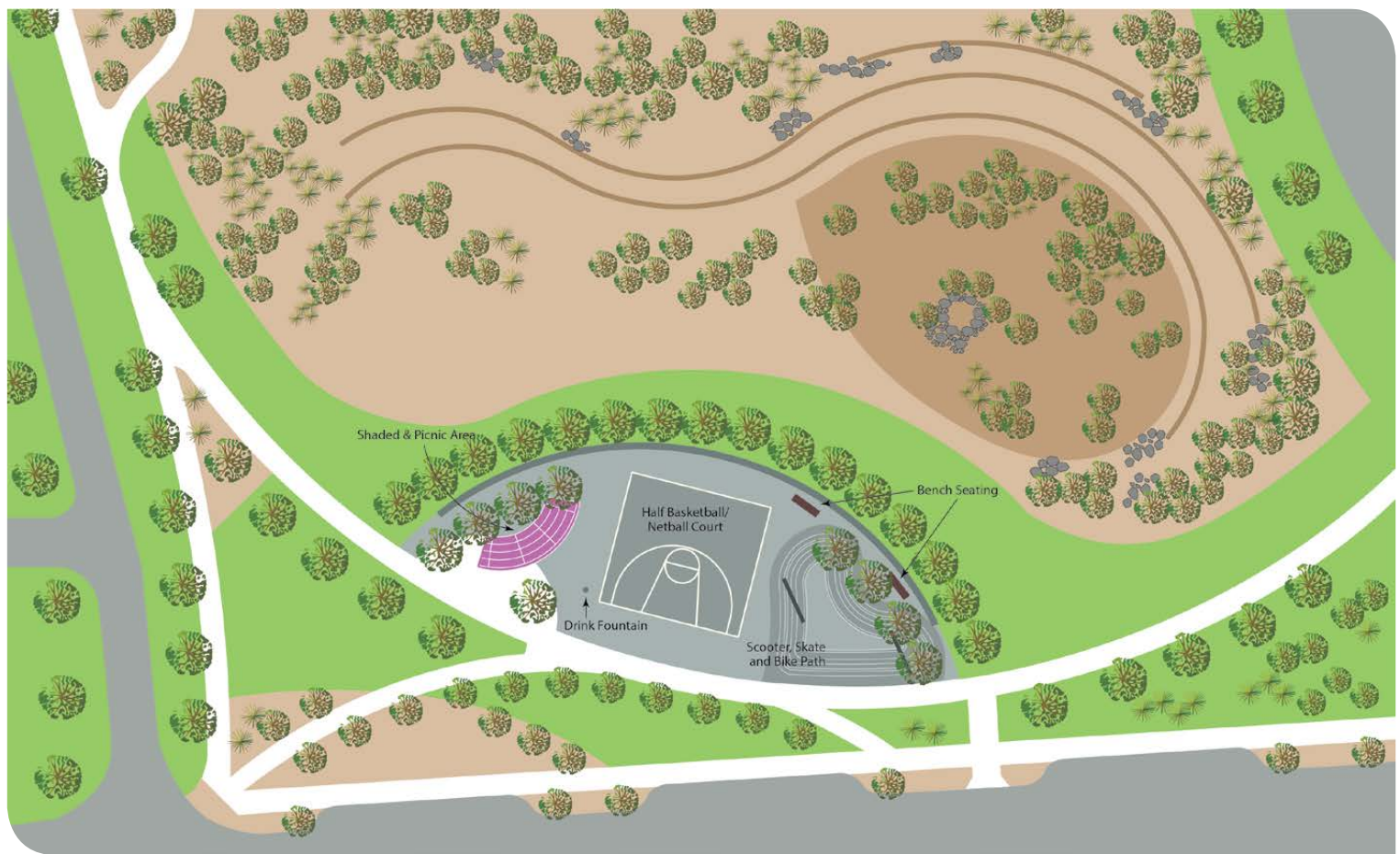


Freeway to Hester Avenue on track for completion by late-July.

The most recent Open Doors Session provided another opportunity for us to meet with a number of residents and we look forward to the next one in early September 2017. In the

meantime, please don't hesitate to contact us with any queries or ideas via the Peet Community Line [community@peet.com.au](mailto:community@peet.com.au).

*Ryan Hunter*  
Senior Development Manager



## Ready, set, play

Residents of Shorehaven can look forward to the completion of the Rise Stage 6 oval as part of an exciting range of landscaping works which are set to get underway this month.

The oval will soon provide a new venue to enjoy the outdoors – with a basketball half court, scooter, skate and bike path amongst the plans. There will also be a drink fountain, seating and a shade structure for when you need to take a well-earned break!

A new public access way will also soon be installed on Bobstay Brace as part of the works. This will see the permanent closure of the temporary road access via Bobstay Brace between Leeway Loop, turning it into a pedestrian-friendly thoroughway with a footpath, bench seating, mulching and waterwise planting.

Advance-notice signage will be installed on the section of Bobstay Brace prior to the commencement of works to advise residents of the permanent closure.

### HAVE YOUR SAY

We know we've got lots of amazing people living at Shorehaven, doing wonderful things – if you have a story idea, or topic you'd like to see covered please drop us a line at the Peet Community Information Line.



# New school offers flexible learning



One of the classrooms at Northshore Christian Grammar School

Students in years 1 and 2 are enjoying the flexible learning spaces at Northshore Christian Grammar School

**Wobble chairs, big group tables, armchairs and flexible learning spaces are just some of the features of the bright new Northshore Christian Grammar School.**

Now half-way through its first year, the school is thriving with enrolments growing and the first intake of students well and truly settling into the architect-designed facilities.

A far-cry from the classrooms of old, the learning spaces at Northshore cater for

individual needs as well as personalised learning styles.

This new way of learning is being adopted by an increasing number of schools in Australia and overseas, and is designed to feel more inclusive and teach students to work effectively in different environments.

And while the bright open spaces at Northshore might not look like a traditional school, there's plenty of quality learning

going on for its growing number of young students and a host of exciting extra-curricular activities including a range of sports, dancing, music and arts options.

Why not tour this great new school online at [northshore.wa.edu.au](http://northshore.wa.edu.au). You can also find out about the school's special Foundation Scholarships, available until 14 July 2017, and all the details on how to enrol your child.

## AEGIS SETS SIGHTS ON ALKIMOS



Late last month, Federal Aged Care Minister Ken Wyatt announced that Aegis Aged Care Group was granted an initial 120 Government-funded bed licences for a modern premium resort-style facility to be known as Aegis Shorehaven.

In total, the plans for Aegis Shorehaven include 134 private suites, each with their

own ensuite, restaurant dining, intimate lounge rooms, cinema, café, beauty salon, therapy rooms, activity areas, hydrotherapy spa, landscaped gardens and many other features.

The aged care facility, which will be located opposite Northshore Christian Grammar School in Shorehaven Central, will help to cater for population growth

and the ageing population within the local and wider area. Some specialised places will be reserved for people with dementia and those in need of respite care.

Aegis is planning to lodge a development application with the City of Wanneroo and we look forward to bringing you more news and updates about this exciting new addition to the Shorehaven community.



Remedy  
Coffeehouse's  
new look

## Find your 'Remedy' at Shorehaven

The new and delightful Remedy Coffeehouse has taken over the Blueberry Café site on Bulwark Avenue – and celebrated its official opening on Saturday 10 June!

More than 70 locals joined in the festivities sampling the menu, tasting the coffee and enjoying the entertainment with kids in particular loving the ball pit and face painter.

Remedy is taking on the challenge to keep a fresh and healthy twist to their menu including an on-the-go healthy range of delicious salad boxes, raw slices and fresh, cold-pressed juices.

It is also serving up more than tasty coffee and great food – offering a range of homewares and children's clothes that make it perfect if you're shopping for a gift or treat for someone special.

For more information on the latest events and healthy offers, visit [@remedycoffeehouse](#) on Facebook.

**Remedy Coffeehouse**  
2/3 Bulwark Avenue  
Shorehaven

*Opening times:*  
Weekdays 7am to 3pm  
Saturday 8am to 1pm

## Handy numbers for your home

The winter months can bring a range of unexpected challenges around the home. To make things easier, we've put together a handy list of contacts for your home.

### Western Power

General enquiries ..... 13 10 87  
(7am-5pm Monday to Friday)  
Emergencies & outages ..... 13 13 51  
Report streetlight faults  
or graffiti ..... 1800 622 008

For more information visit

[westernpower.com.au](http://westernpower.com.au)

### Water Corporation

General enquiries ..... 13 13 75  
(7am-5pm Monday to Friday)

### Telstra

Reporting damage to Telstra..... 13 22 03

### Alinta Energy

Gas emergencies and faults..... 13 13 52

## WHAT'S ON

### PARENTS COMMUNITY GROUP

**When:** Every Thursday  
until the end of July

**Time:** 9am

**Where:** Remedy Coffeehouse  
Alkimos, 2/3 Bulwark  
Avenue, Alkimos

Why not check out Shorehaven's newest café by attending the regular parents community group held each Thursday. With a half priced coffee for mum and dad, and a free piece of fruit for children what's stopping you?

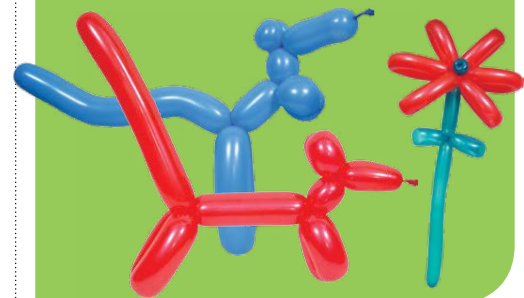
### JULY SCHOOL HOLIDAY ACTIVITIES

**What:** The City of Joondalup has an exciting range of events and activities planned from magic shows, to balloon twisting to stop motion magic and knitting. Bookings are essential.

**Where:** City of Joondalup Libraries (various)

**Cost:** \$3 per child, per event (excluding Minecraft Camps)

Help the City of Joondalup celebrate the 20th anniversary of the Joondalup Library opening and the release of Harry Potter and the Philosophers Stone at the City of Joondalup Libraries these school holidays. Find out more at [joondalup.wa.gov.au](http://joondalup.wa.gov.au).



**shorehaven**  
ALKIMOS

### Sales and Information Centre

Cnr Shorehaven Boulevard and Shipmaster Avenue, Alkimos

SATURDAY TO WEDNESDAY 1PM TO 5PM

(08) 9246 7007

0447 220 839

[shorehaven@peet.com.au](mailto:shorehaven@peet.com.au)

[shorehaven.com.au](http://shorehaven.com.au)

**PEET**