





\*Price is subject to availability and change.

### The Brunswick MKII by TERRACE

# TERRACE

 4  2  2 **Home Size: 165.75sqm**

#### Lot 225 Fuselage Road (168sqm)

The Brunswick MKII by Terrace is a four bedroom, two bathroom home, featuring a master suite with an ensuite, open plan living with direct access to the courtyard, and access to the balcony on the first floor from two of the minor bedrooms.

#### HOUSE FEATURES

- Architecturally designed elevations and floor plan
- Double brick construction with an engineered concrete suspended slab
- SMEG appliances
- 31c ceiling height to the ground floor
- Built in robes to all bedrooms
- Ceramic tiling to all wet areas

For further information please call

**Renee Monteleone on 0438 387 449 or Terrace on (08) 6461 5461**

or visit our Sales and Information Centre at

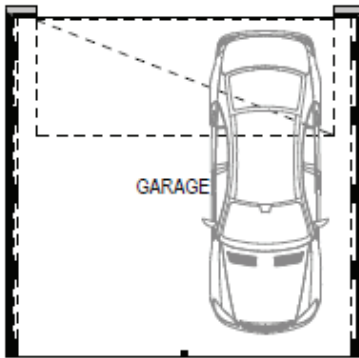
Corner of Youle-Dean Road and Isoodon Street, BRABHAM

[www.brabhamestate.com.au](http://www.brabhamestate.com.au)

### The Brunswick MKII by TERRACE

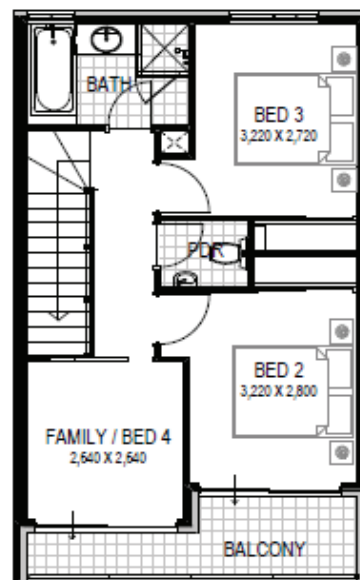
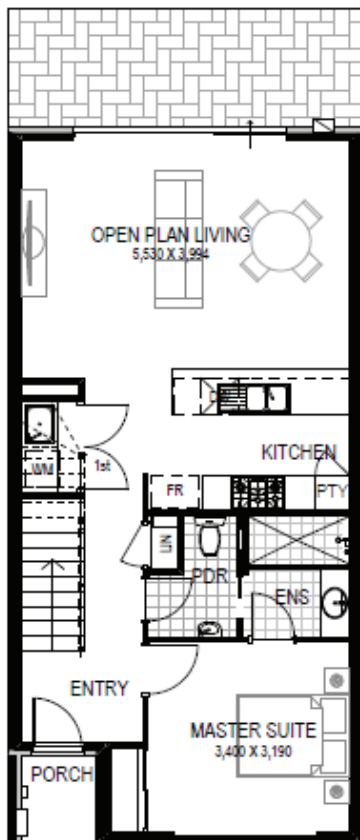
Home Size: 165.75sqm

Lot Size: 168sqm



Ground Floor	70.17m <sup>2</sup>
First Floor	50.92m <sup>2</sup>
Garage	35.28m <sup>2</sup>
Balcony	7.13m <sup>2</sup>
Porch	2.25m <sup>2</sup>

**TOTAL: 165.75m<sup>2</sup>**



\*House and land sold separately. The entity holding a real estate licence which has been appointed by Peet Limited ABN 56 008 665 834 or a subsidiary of it to sell land within the applicable State or Territory acts as agent for the sale of the land only. Buyers must enter into a separate contract with the builder, and the builder is responsible for all matters relating to the building contract and the house. Prices shown may include rebates for the fulfilment of separate conditions under the land contract, and information provided by the builder may be subject to eligibility criteria and other terms and conditions. Buyers should review each of the land and building contracts carefully and make their own enquiries. It is recommended that buyers obtain independent advice before proceeding. Illustrations and information are intended to be indicative only and are believed to be correct at the time of publication. Peet Limited ABN 56 008 665 834 reserves the right to withdraw or alter any package at any time without notice at its absolute discretion. Estimated costs for the package are indicative only and other costs and fees are payable, including but not limited to: transfer (also known as stamp) duty, settlement/registration fees, legal/conveyancing fees, finance costs, site works, engagement of any consultants, approvals, connection for services and variations. Prices and lot information correct as at 08/12/2020.