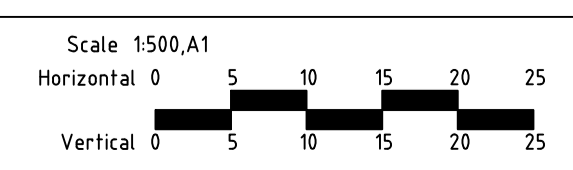


| Rev | Amendments | App'd | Date |
|-----|--|-------|----------|
| C | REVISED RESERVE FOOTPATH | M.Z. | 9/09/16 |
| B | REVISED PRAM CROSSING, FOOTPATH NOTE & PIT 6-2, REMOVED LMARKING | M.Z. | 26/08/16 |
| A | ISSUED FOR APPROVAL | M.Z. | 1/07/16 |

file name 302850R2-FP.dwg layout name R2-1
 file location G:\30\302850\A\CAO
 plotted by Simon Davies plot date 12/9/2016 1:55 PM
 © Spiire Australia Pty Ltd
 Standard Drawing RDA1 - Version 20120911



Designed 27/06/16
 S. DAVIES
 Checked 01/07/16
 B. IBBS
 Authorised 01/07/16
 M. ZAMMATARO

PEET

Map Reference MELWAY 359 B12
 Sheet Number 02
 Drg Status PRELIMINARY

spiire
 spiire ABN 55 050 029 635
 469 La Trobe Street PO Box 16084 Melbourne Victoria 8007 Australia T 61 3 9993 7888
 spiire.com.au

**LITTLE GREEN
 STAGE 8
 FACE PLAN**

PEET NO. 1895 PTY LTD
 WYNDHAM CITY COUNCIL

Rev **C**
 Drg No **302850R02**