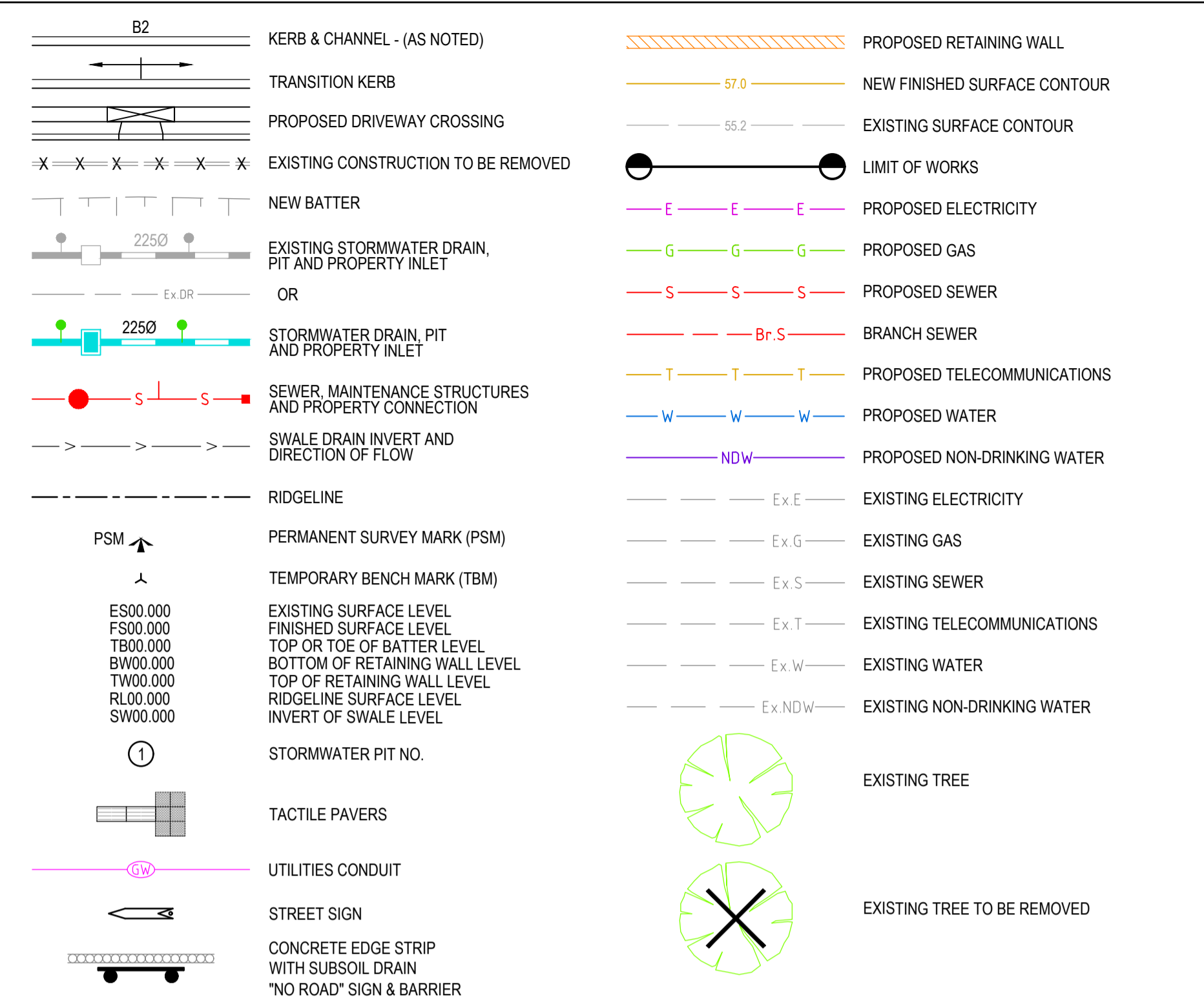
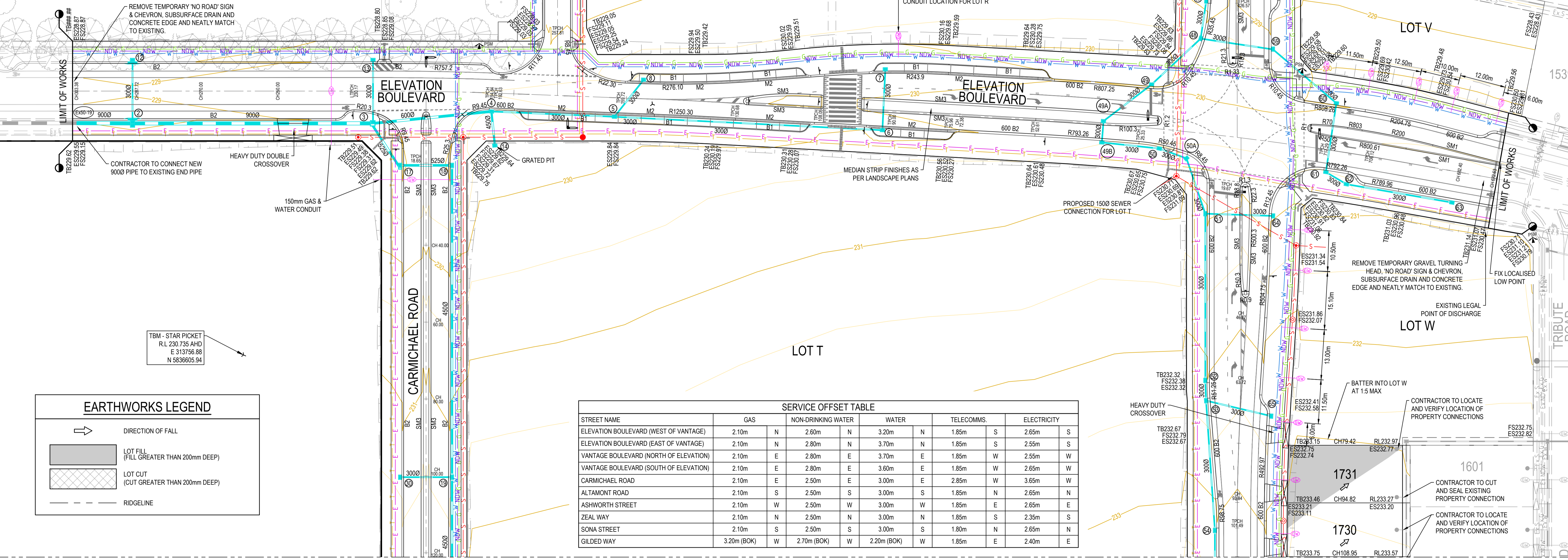


ROADWORKS LEGEND



WARNING
PROPOSED SERVICES
 THE LOCATION AND EXTENT OF PROPOSED SERVICES IS INDICATIVE ONLY AND ARE NOT TO BE USED FOR CONSTRUCTION. REFER TO AUTHORISED DOCUMENTATION BY RELEVANT AUTHORITY FOR CONSTRUCTION DETAILS

WARNING
BEWARE OF UNDERGROUND SERVICES
 THE LOCATIONS OF UNDERGROUND SERVICES ARE APPROXIMATE ONLY AND THEIR EXACT POSITION SHOULD BE PROVEN ON SITE. NO GUARANTEE IS GIVEN THAT ALL EXISTING SERVICES ARE SHOWN.



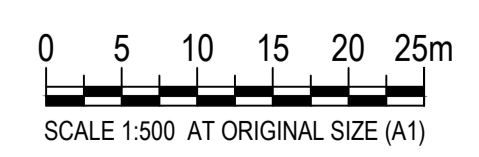
SERVICE OFFSET TABLE

STREET NAME	GAS	NON-DRINKING WATER	WATER	TELECOMMS.	ELECTRICITY
ELEVATION BOULEVARD (WEST OF VANTAGE)	2.10m	N 2.60m	N 3.20m	1.85m	S 2.65m
ELEVATION BOULEVARD (EAST OF VANTAGE)	2.10m	N 2.80m	N 3.70m	1.85m	S 2.55m
VANTAGE BOULEVARD (NORTH OF ELEVATION)	2.10m	E 2.80m	E 3.70m	1.85m	W 2.55m
VANTAGE BOULEVARD (SOUTH OF ELEVATION)	2.10m	E 2.80m	E 3.60m	1.85m	W 2.65m
CARMICHAEL ROAD	2.10m	E 2.50m	E 3.00m	E 2.85m	W 3.65m
ALTMONT ROAD	2.10m	S 2.50m	S 3.00m	S 1.85m	N 2.65m
ASHWORTH STREET	2.10m	W 2.50m	W 3.00m	W 1.85m	E 2.65m
ZEAL WAY	2.10m	N 2.50m	N 3.00m	N 1.85m	S 2.35m
SONA STREET	2.10m	S 2.50m	S 3.00m	S 1.80m	N 2.65m
GILDED WAY	3.20m (BOK)	W 2.70m (BOK)	W 2.20m (BOK)	W 1.85m	E 2.40m

FOR CONTINUATION REFER TO DRAWING 102419-17-C101

EARTHWORKS LEGEND

- DIRECTION OF FALL
- LOT FILL (FILL GREATER THAN 200mm DEEP)
- LOT CUT (CUT GREATER THAN 200mm DEEP)
- RIDGELINE



MEINHARDT
 Meinhardt Australia Pty Ltd
 A.C.N. 052 275 635
 Level 11, 501 Swanston Street
 Melbourne VIC 3000
 Australia
 T +61 3 8678 1200
 F +61 3 8678 1201
 info@meinhardtgroup.com
 http://www.meinhardtgroup.com
 © Copyright

CLIENT
PEET LTD
 Level 3, 492 St Kilda Road, Melbourne VIC 3004

TITLE
LAYOUT PLAN
SHEET 1 OF 2

PROJECT
ASTON ESTATE
STAGE 17
HUME CITY COUNCIL

STATUS
FOR CONSTRUCTION

DESIGNED LG
 DRAWN MG
 APPROVED AC

PROJECT No
102419-17

DRAWING No
C100

SCALE @ A1
 SHEET SHOWN 4 of 42

REV
07

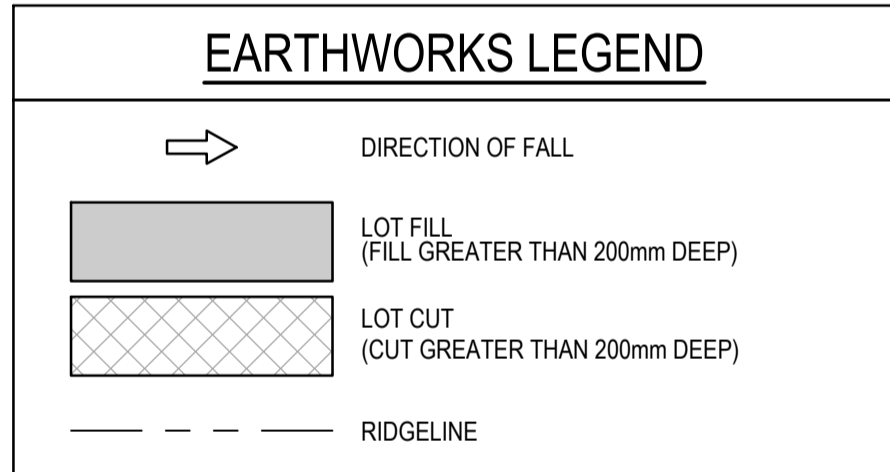
DWG FILE: X:\102419 - Bar Property Craigieburn\West Road\102419-17-C100-001.dwg - MH PLOT TIME: 07 Apr 2017, 8:27am

TBM - STAR PICKET
R.L. 230.735 AHD
E 313756.88
N 5836605.94

TBM - STAR PICKET
R.L. 232.490 AHD
E 313902.22
N 5836543.00

TBM - STAR PICKET
R.L. 234.095 AHD
E 314033.94
N 5836457.10

TBM - STAR PICKET
R.L. 233.280 AHD
E 313752.40
N 5836426.55

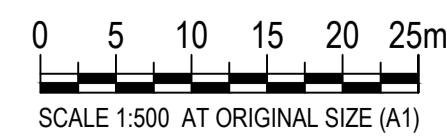


WARNING
PROPOSED SERVICES

THE LOCATION AND EXTENT OF PROPOSED SERVICES IS INDICATIVE ONLY AND ARE NOT TO BE USED FOR CONSTRUCTION. REFER TO AUTHORISED DOCUMENTATION BY RELEVANT AUTHORITY FOR CONSTRUCTION DETAILS

WARNING
BEWARE OF UNDERGROUND SERVICES

THE LOCATIONS OF UNDERGROUND SERVICES ARE APPROXIMATE ONLY AND THEIR EXACT POSITION SHOULD BE PROVEN ON SITE. NO GUARANTEE IS GIVEN THAT ALL EXISTING SERVICES ARE SHOWN.



MEINHARDT
Meinhardt Australia Pty Ltd
A.C.N. 052 275 635
Level 11, 501 Swanston Street
Melbourne VIC 3000
Australia
T: +61 3 8676 1200
F: +61 3 8676 1201
info@meinhardtgroup.com
http://www.meinhardtgroup.com
© Copyright

CLIENT
PEET LTD
Level 3, 492 St Kilda Road, Melbourne VIC 3004

TITLE
LAYOUT PLAN
SHEET 2 OF 2

PROJECT
ASTON ESTATE
STAGE 17
HUME CITY COUNCIL

FOR CONSTRUCTION

DESIGNED LG	DRAWN MG	APPROVED AC	SCALE @ A1 SHOWN	SHEET 5 of 42
PROJECT No 102419-17	DRAWING No C101	REV 07		

STREET NAME	SERVICE OFFSET TABLE									
	GAS	NON-DRINKING WATER	WATER	TELECOMMS.	ELECTRICITY					
ELEVATION BOULEVARD (WEST OF VANTAGE)	2.10m	N	2.60m	N	3.20m	N	1.85m	S	2.65m	S
ELEVATION BOULEVARD (EAST OF VANTAGE)	2.10m	N	2.80m	N	3.70m	N	1.85m	S	2.55m	S
VANTAGE BOULEVARD (NORTH OF ELEVATION)	2.10m	E	2.80m	E	3.70m	E	1.85m	W	2.55m	W
VANTAGE BOULEVARD (SOUTH OF ELEVATION)	2.10m	E	2.80m	E	3.60m	E	1.85m	W	2.65m	W
CARMICHAEL ROAD	2.10m	E	2.50m	E	3.00m	E	2.85m	W	3.65m	W
ALTAMONT ROAD	2.10m	S	2.50m	S	3.00m	S	1.85m	N	2.65m	N
ASHWORTH STREET	2.10m	W	2.50m	W	3.00m	W	1.85m	E	2.65m	E
ZEAL WAY	2.10m	N	2.50m	N	3.00m	N	1.85m	S	2.35m	S
SONA STREET	2.10m	S	2.50m	S	3.00m	S	1.80m	N	2.65m	N
GLDED WAY	3.20m (BOK)	W	2.70m (BOK)	W	2.20m (BOK)	W	1.85m	E	2.40m	E

REV	DESCRIPTION	BY	APP	DATE
01	CONSTRUCTION ISSUE	AUB	LG	28.07.16
02	CONSTRUCTION ISSUE - ELECTRICAL OFFSET AMENDMENTS	MG	CD	29.08.16
03	CONSTRUCTION ISSUE - SONA STREET TELECOMS. OFFSET AMENDED	MG	LG	05.10.16
04	CONSTRUCTION ISSUE - LOTS 1704, 1717, 1719 & 1721 G&W RELOCATION	CD	CD	24.10.16
05	CONSTRUCTION ISSUE - GAS & WATER CONDUITS FOR FUTURE LOTS ADDED	AUB	CD	28.10.16
06	CONSTRUCTION ISSUE - MEDIAN AMENDMENT	MG	LG	15.12.16
07	CONSTRUCTION ISSUE - FUTURE LOTS LAYOUT AMENDMENT	CD	CD	23.02.17
08	CONSTRUCTION ISSUE - LOT NIPORU NAMES ADDED	DC	CD	07.04.17

