



---

## FILL CERTIFICATE

PROJECT: Lot No 1901 (as per Drawing No 102419-19 C100 & C101)  
Aston Estate (Stage 19), Craigieburn

CLIENT: Winslow Constructors Pty Ltd  
50 Barry Road  
CAMPBELLFIELD VIC 3061

REPORT NO: 16025\_1901

DATE: 29/08/16

---

### SUMMARY

Civil Geotechnical Services were engaged by Winslow Constructors Pty Ltd to provide inspection and testing services on the earthworks associated with Lot 1901 of Aston Estate (Stage 19), Craigieburn, in a manner which would satisfy the criteria for Level 1 Supervision as specified in Section 8.2 of AS 3798 - Guidelines on Earthworks for Commercial and Residential Developments - 2007. The project was classified as Type 1/2 requiring a minimum density ratio of 95.0% (standard compactive effort) within the area of fill placement.

A site inspection was conducted prior to any fill being placed on the Lot. On the completion of earthworks and after examining the test results and the materials used, we are of the opinion that the filling procedure conducted by Winslow Constructors Pty Ltd satisfied the requirements of AS 3798 in regard to the placement of fill on a Type 1/2 Project under Level 1 Supervision.

Accordingly, when classifying the site in accordance with the procedures presented in Section 2 of AS 2870 – Residential Slabs and Footings – Construction (2011), we are of the view that the bulk fill materials that were placed on this Lot by Winslow Constructors Pty Ltd can be considered as being placed in a controlled manner to a minimum density ratio of 95% (standard compactive effort).

### LIMITATIONS

The use of this Certificate is only appropriate for the field conditions present up to 4<sup>th</sup> April 2016.

A handwritten signature in black ink, appearing to read 'Griffin Brown', is written over a light blue horizontal line.

Griffin Brown



---

## FILL CERTIFICATE

PROJECT: Lot No 1902 (as per Drawing No 102419-19 C100 & C101)  
Aston Estate (Stage 19), Craigieburn

CLIENT: Winslow Constructors Pty Ltd  
50 Barry Road  
CAMPBELLFIELD VIC 3061

REPORT NO: 16025\_1902

DATE: 29/08/16

---

### SUMMARY

Civil Geotechnical Services were engaged by Winslow Constructors Pty Ltd to provide inspection and testing services on the earthworks associated with Lot 1902 of Aston Estate (Stage 19), Craigieburn, in a manner which would satisfy the criteria for Level 1 Supervision as specified in Section 8.2 of AS 3798 - Guidelines on Earthworks for Commercial and Residential Developments - 2007. The project was classified as Type 1/2 requiring a minimum density ratio of 95.0% (standard compactive effort) within the area of fill placement.

A site inspection was conducted prior to any fill being placed on the Lot. On the completion of earthworks and after examining the test results and the materials used, we are of the opinion that the filling procedure conducted by Winslow Constructors Pty Ltd satisfied the requirements of AS 3798 in regard to the placement of fill on a Type 1/2 Project under Level 1 Supervision.

Accordingly, when classifying the site in accordance with the procedures presented in Section 2 of AS 2870 – Residential Slabs and Footings – Construction (2011), we are of the view that the bulk fill materials that were placed on this Lot by Winslow Constructors Pty Ltd can be considered as being placed in a controlled manner to a minimum density ratio of 95% (standard compactive effort).

### LIMITATIONS

The use of this Certificate is only appropriate for the field conditions present up to 4<sup>th</sup> April 2016.

A handwritten signature in black ink, appearing to read 'Griffin Brown', is written over a light blue horizontal line.

Griffin Brown



---

## FILL CERTIFICATE

PROJECT: Lot No 1903 (as per Drawing No 102419-19 C100 & C101)  
Aston Estate (Stage 19), Craigieburn

CLIENT: Winslow Constructors Pty Ltd  
50 Barry Road  
CAMPBELLFIELD VIC 3061

REPORT NO: 16025\_1903

DATE: 29/08/16

---

### SUMMARY

Civil Geotechnical Services were engaged by Winslow Constructors Pty Ltd to provide inspection and testing services on the earthworks associated with Lot 1903 of Aston Estate (Stage 19), Craigieburn, in a manner which would satisfy the criteria for Level 1 Supervision as specified in Section 8.2 of AS 3798 - Guidelines on Earthworks for Commercial and Residential Developments - 2007. The project was classified as Type 1/2 requiring a minimum density ratio of 95.0% (standard compactive effort) within the area of fill placement.

A site inspection was conducted prior to any fill being placed on the Lot. On the completion of earthworks and after examining the test results and the materials used, we are of the opinion that the filling procedure conducted by Winslow Constructors Pty Ltd satisfied the requirements of AS 3798 in regard to the placement of fill on a Type 1/2 Project under Level 1 Supervision.

Accordingly, when classifying the site in accordance with the procedures presented in Section 2 of AS 2870 – Residential Slabs and Footings – Construction (2011), we are of the view that the bulk fill materials that were placed on this Lot by Winslow Constructors Pty Ltd can be considered as being placed in a controlled manner to a minimum density ratio of 95% (standard compactive effort).

### LIMITATIONS

The use of this Certificate is only appropriate for the field conditions present up to 4<sup>th</sup> April 2016.

A handwritten signature in black ink, appearing to read 'Griffin Brown', is written over a light blue horizontal line.

Griffin Brown



---

## FILL CERTIFICATE

PROJECT: Lot No 1904 (as per Drawing No 102419-19 C100 & C101)  
Aston Estate (Stage 19), Craigieburn

CLIENT: Winslow Constructors Pty Ltd  
50 Barry Road  
CAMPBELLFIELD VIC 3061

REPORT NO: 16025\_1904

DATE: 29/08/16

---

### SUMMARY

Civil Geotechnical Services were engaged by Winslow Constructors Pty Ltd to provide inspection and testing services on the earthworks associated with Lot 1904 of Aston Estate (Stage 19), Craigieburn, in a manner which would satisfy the criteria for Level 1 Supervision as specified in Section 8.2 of AS 3798 - Guidelines on Earthworks for Commercial and Residential Developments - 2007. The project was classified as Type 1/2 requiring a minimum density ratio of 95.0% (standard compactive effort) within the area of fill placement.

A site inspection was conducted prior to any fill being placed on the Lot. On the completion of earthworks and after examining the test results and the materials used, we are of the opinion that the filling procedure conducted by Winslow Constructors Pty Ltd satisfied the requirements of AS 3798 in regard to the placement of fill on a Type 1/2 Project under Level 1 Supervision.

Accordingly, when classifying the site in accordance with the procedures presented in Section 2 of AS 2870 – Residential Slabs and Footings – Construction (2011), we are of the view that the bulk fill materials that were placed on this Lot by Winslow Constructors Pty Ltd can be considered as being placed in a controlled manner to a minimum density ratio of 95% (standard compactive effort).

### LIMITATIONS

The use of this Certificate is only appropriate for the field conditions present up to 4<sup>th</sup> April 2016.

A handwritten signature in black ink, appearing to read 'Griffin Brown', is written over a light blue horizontal line.

Griffin Brown



---

## FILL CERTIFICATE

PROJECT: Lot No 1905 (as per Drawing No 102419-19 C100 & C101)  
Aston Estate (Stage 19), Craigieburn

CLIENT: Winslow Constructors Pty Ltd  
50 Barry Road  
CAMPBELLFIELD VIC 3061

REPORT NO: 16025\_1905

DATE: 29/08/16

---

### SUMMARY

Civil Geotechnical Services were engaged by Winslow Constructors Pty Ltd to provide inspection and testing services on the earthworks associated with Lot 1905 of Aston Estate (Stage 19), Craigieburn, in a manner which would satisfy the criteria for Level 1 Supervision as specified in Section 8.2 of AS 3798 - Guidelines on Earthworks for Commercial and Residential Developments - 2007. The project was classified as Type 1/2 requiring a minimum density ratio of 95.0% (standard compactive effort) within the area of fill placement.

A site inspection was conducted prior to any fill being placed on the Lot. On the completion of earthworks and after examining the test results and the materials used, we are of the opinion that the filling procedure conducted by Winslow Constructors Pty Ltd satisfied the requirements of AS 3798 in regard to the placement of fill on a Type 1/2 Project under Level 1 Supervision.

Accordingly, when classifying the site in accordance with the procedures presented in Section 2 of AS 2870 – Residential Slabs and Footings – Construction (2011), we are of the view that the bulk fill materials that were placed on this Lot by Winslow Constructors Pty Ltd can be considered as being placed in a controlled manner to a minimum density ratio of 95% (standard compactive effort).

### LIMITATIONS

The use of this Certificate is only appropriate for the field conditions present up to 4<sup>th</sup> April 2016.

A handwritten signature in black ink, appearing to read 'Griffin Brown', written in a cursive style.

Griffin Brown



---

## FILL CERTIFICATE

PROJECT: Lot No 1906 (as per Drawing No 102419-19 C100 & C101)  
Aston Estate (Stage 19), Craigieburn

CLIENT: Winslow Constructors Pty Ltd  
50 Barry Road  
CAMPBELLFIELD VIC 3061

REPORT NO: 16025\_1906

DATE: 29/08/16

---

### SUMMARY

Civil Geotechnical Services were engaged by Winslow Constructors Pty Ltd to provide inspection and testing services on the earthworks associated with Lot 1906 of Aston Estate (Stage 19), Craigieburn, in a manner which would satisfy the criteria for Level 1 Supervision as specified in Section 8.2 of AS 3798 - Guidelines on Earthworks for Commercial and Residential Developments - 2007. The project was classified as Type 1/2 requiring a minimum density ratio of 95.0% (standard compactive effort) within the area of fill placement.

A site inspection was conducted prior to any fill being placed on the Lot. On the completion of earthworks and after examining the test results and the materials used, we are of the opinion that the filling procedure conducted by Winslow Constructors Pty Ltd satisfied the requirements of AS 3798 in regard to the placement of fill on a Type 1/2 Project under Level 1 Supervision.

Accordingly, when classifying the site in accordance with the procedures presented in Section 2 of AS 2870 – Residential Slabs and Footings – Construction (2011), we are of the view that the bulk fill materials that were placed on this Lot by Winslow Constructors Pty Ltd can be considered as being placed in a controlled manner to a minimum density ratio of 95% (standard compactive effort).

### LIMITATIONS

The use of this Certificate is only appropriate for the field conditions present up to 4<sup>th</sup> April 2016.

A handwritten signature in black ink, appearing to read 'Griffin Brown', written in a cursive style.

Griffin Brown



---

## FILL CERTIFICATE

PROJECT: Lot No 1907 (as per Drawing No 102419-19 C100 & C101)  
Aston Estate (Stage 19), Craigieburn

CLIENT: Winslow Constructors Pty Ltd  
50 Barry Road  
CAMPBELLFIELD VIC 3061

REPORT NO: 16025\_1907

DATE: 29/08/16

---

### SUMMARY

Civil Geotechnical Services were engaged by Winslow Constructors Pty Ltd to provide inspection and testing services on the earthworks associated with Lot 1907 of Aston Estate (Stage 19), Craigieburn, in a manner which would satisfy the criteria for Level 1 Supervision as specified in Section 8.2 of AS 3798 - Guidelines on Earthworks for Commercial and Residential Developments - 2007. The project was classified as Type 1/2 requiring a minimum density ratio of 95.0% (standard compactive effort) within the area of fill placement.

A site inspection was conducted prior to any fill being placed on the Lot. On the completion of earthworks and after examining the test results and the materials used, we are of the opinion that the filling procedure conducted by Winslow Constructors Pty Ltd satisfied the requirements of AS 3798 in regard to the placement of fill on a Type 1/2 Project under Level 1 Supervision.

Accordingly, when classifying the site in accordance with the procedures presented in Section 2 of AS 2870 – Residential Slabs and Footings – Construction (2011), we are of the view that the bulk fill materials that were placed on this Lot by Winslow Constructors Pty Ltd can be considered as being placed in a controlled manner to a minimum density ratio of 95% (standard compactive effort).

### LIMITATIONS

The use of this Certificate is only appropriate for the field conditions present up to 4<sup>th</sup> April 2016.

A handwritten signature in black ink, appearing to read 'Griffin Brown', is written over a light blue horizontal line.

Griffin Brown



---

## FILL CERTIFICATE

PROJECT: Lot No 1908 (as per Drawing No 102419-19 C100 & C101)  
Aston Estate (Stage 19), Craigieburn

CLIENT: Winslow Constructors Pty Ltd  
50 Barry Road  
CAMPBELLFIELD VIC 3061

REPORT NO: 16025\_1908

DATE: 29/08/16

---

### SUMMARY

Civil Geotechnical Services were engaged by Winslow Constructors Pty Ltd to provide inspection and testing services on the earthworks associated with Lot 1908 of Aston Estate (Stage 19), Craigieburn, in a manner which would satisfy the criteria for Level 1 Supervision as specified in Section 8.2 of AS 3798 - Guidelines on Earthworks for Commercial and Residential Developments - 2007. The project was classified as Type 1/2 requiring a minimum density ratio of 95.0% (standard compactive effort) within the area of fill placement.

A site inspection was conducted prior to any fill being placed on the Lot. On the completion of earthworks and after examining the test results and the materials used, we are of the opinion that the filling procedure conducted by Winslow Constructors Pty Ltd satisfied the requirements of AS 3798 in regard to the placement of fill on a Type 1/2 Project under Level 1 Supervision.

Accordingly, when classifying the site in accordance with the procedures presented in Section 2 of AS 2870 – Residential Slabs and Footings – Construction (2011), we are of the view that the bulk fill materials that were placed on this Lot by Winslow Constructors Pty Ltd can be considered as being placed in a controlled manner to a minimum density ratio of 95% (standard compactive effort).

### LIMITATIONS

The use of this Certificate is only appropriate for the field conditions present up to 4<sup>th</sup> April 2016.

A handwritten signature in black ink, appearing to read 'Griffin Brown', written in a cursive style.

Griffin Brown





---

## FILL CERTIFICATE

PROJECT: Lot No 1909 (as per Drawing No 102419-19 C100 & C101)  
Aston Estate (Stage 19), Craigieburn

CLIENT: Winslow Constructors Pty Ltd  
50 Barry Road  
CAMPBELLFIELD VIC 3061

REPORT NO: 16025\_1909

DATE: 29/08/16

---

### SUMMARY

Civil Geotechnical Services were engaged by Winslow Constructors Pty Ltd to provide inspection and testing services on the earthworks associated with Lot 1909 of Aston Estate (Stage 19), Craigieburn, in a manner which would satisfy the criteria for Level 1 Supervision as specified in Section 8.2 of AS 3798 - Guidelines on Earthworks for Commercial and Residential Developments - 2007. The project was classified as Type 1/2 requiring a minimum density ratio of 95.0% (standard compactive effort) within the area of fill placement.

A site inspection was conducted prior to any fill being placed on the Lot. On the completion of earthworks and after examining the test results and the materials used, we are of the opinion that the filling procedure conducted by Winslow Constructors Pty Ltd satisfied the requirements of AS 3798 in regard to the placement of fill on a Type 1/2 Project under Level 1 Supervision.

Accordingly, when classifying the site in accordance with the procedures presented in Section 2 of AS 2870 – Residential Slabs and Footings – Construction (2011), we are of the view that the bulk fill materials that were placed on this Lot by Winslow Constructors Pty Ltd can be considered as being placed in a controlled manner to a minimum density ratio of 95% (standard compactive effort).

### LIMITATIONS

The use of this Certificate is only appropriate for the field conditions present up to 4<sup>th</sup> April 2016.

A handwritten signature in black ink, appearing to read 'Griffin Brown', is written over a light blue horizontal line.

Griffin Brown



---

## FILL CERTIFICATE

PROJECT: Lot No 1910 (as per Drawing No 102419-19 C100 & C101)  
Aston Estate (Stage 19), Craigieburn

CLIENT: Winslow Constructors Pty Ltd  
50 Barry Road  
CAMPBELLFIELD VIC 3061

REPORT NO: 16025\_1910

DATE: 29/08/16

---

### SUMMARY

Civil Geotechnical Services were engaged by Winslow Constructors Pty Ltd to provide inspection and testing services on the earthworks associated with Lot 1910 of Aston Estate (Stage 19), Craigieburn, in a manner which would satisfy the criteria for Level 1 Supervision as specified in Section 8.2 of AS 3798 - Guidelines on Earthworks for Commercial and Residential Developments - 2007. The project was classified as Type 1/2 requiring a minimum density ratio of 95.0% (standard compactive effort) within the area of fill placement.

A site inspection was conducted prior to any fill being placed on the Lot. On the completion of earthworks and after examining the test results and the materials used, we are of the opinion that the filling procedure conducted by Winslow Constructors Pty Ltd satisfied the requirements of AS 3798 in regard to the placement of fill on a Type 1/2 Project under Level 1 Supervision.

Accordingly, when classifying the site in accordance with the procedures presented in Section 2 of AS 2870 – Residential Slabs and Footings – Construction (2011), we are of the view that the bulk fill materials that were placed on this Lot by Winslow Constructors Pty Ltd can be considered as being placed in a controlled manner to a minimum density ratio of 95% (standard compactive effort).

### LIMITATIONS

The use of this Certificate is only appropriate for the field conditions present up to 4<sup>th</sup> April 2016.

A handwritten signature in black ink, appearing to read 'Griffin Brown', written in a cursive style.

Griffin Brown



---

## FILL CERTIFICATE

PROJECT: Lot No 1911 (as per Drawing No 102419-19 C100 & C101)  
Aston Estate (Stage 19), Craigieburn

CLIENT: Winslow Constructors Pty Ltd  
50 Barry Road  
CAMPBELLFIELD VIC 3061

REPORT NO: 16025\_1911

DATE: 29/08/16

---

### SUMMARY

Civil Geotechnical Services were engaged by Winslow Constructors Pty Ltd to provide inspection and testing services on the earthworks associated with Lot 1911 of Aston Estate (Stage 19), Craigieburn, in a manner which would satisfy the criteria for Level 1 Supervision as specified in Section 8.2 of AS 3798 - Guidelines on Earthworks for Commercial and Residential Developments - 2007. The project was classified as Type 1/2 requiring a minimum density ratio of 95.0% (standard compactive effort) within the area of fill placement.

A site inspection was conducted prior to any fill being placed on the Lot. On the completion of earthworks and after examining the test results and the materials used, we are of the opinion that the filling procedure conducted by Winslow Constructors Pty Ltd satisfied the requirements of AS 3798 in regard to the placement of fill on a Type 1/2 Project under Level 1 Supervision.

Accordingly, when classifying the site in accordance with the procedures presented in Section 2 of AS 2870 – Residential Slabs and Footings – Construction (2011), we are of the view that the bulk fill materials that were placed on this Lot by Winslow Constructors Pty Ltd can be considered as being placed in a controlled manner to a minimum density ratio of 95% (standard compactive effort).

### LIMITATIONS

The use of this Certificate is only appropriate for the field conditions present up to 4<sup>th</sup> April 2016.

A handwritten signature in black ink, appearing to read 'Griffin Brown', is written over a light blue horizontal line.

Griffin Brown



---

## FILL CERTIFICATE

PROJECT: Lot No 1912 (as per Drawing No 102419-19 C100 & C101)  
Aston Estate (Stage 19), Craigieburn

CLIENT: Winslow Constructors Pty Ltd  
50 Barry Road  
CAMPBELLFIELD VIC 3061

REPORT NO: 16025\_1912

DATE: 29/08/16

---

### SUMMARY

Civil Geotechnical Services were engaged by Winslow Constructors Pty Ltd to provide inspection and testing services on the earthworks associated with Lot 1912 of Aston Estate (Stage 19), Craigieburn, in a manner which would satisfy the criteria for Level 1 Supervision as specified in Section 8.2 of AS 3798 - Guidelines on Earthworks for Commercial and Residential Developments - 2007. The project was classified as Type 1/2 requiring a minimum density ratio of 95.0% (standard compactive effort) within the area of fill placement.

A site inspection was conducted prior to any fill being placed on the Lot. On the completion of earthworks and after examining the test results and the materials used, we are of the opinion that the filling procedure conducted by Winslow Constructors Pty Ltd satisfied the requirements of AS 3798 in regard to the placement of fill on a Type 1/2 Project under Level 1 Supervision.

Accordingly, when classifying the site in accordance with the procedures presented in Section 2 of AS 2870 – Residential Slabs and Footings – Construction (2011), we are of the view that the bulk fill materials that were placed on this Lot by Winslow Constructors Pty Ltd can be considered as being placed in a controlled manner to a minimum density ratio of 95% (standard compactive effort).

### LIMITATIONS

The use of this Certificate is only appropriate for the field conditions present up to 4<sup>th</sup> April 2016.

A handwritten signature in black ink, appearing to read 'Griffin Brown', is written over a light blue horizontal line.

Griffin Brown



---

## FILL CERTIFICATE

PROJECT: Lot No 1913 (as per Drawing No 102419-19 C100 & C101)  
Aston Estate (Stage 19), Craigieburn

CLIENT: Winslow Constructors Pty Ltd  
50 Barry Road  
CAMPBELLFIELD VIC 3061

REPORT NO: 16025\_1913

DATE: 29/08/16

---

### SUMMARY

Civil Geotechnical Services were engaged by Winslow Constructors Pty Ltd to provide inspection and testing services on the earthworks associated with Lot 1913 of Aston Estate (Stage 19), Craigieburn, in a manner which would satisfy the criteria for Level 1 Supervision as specified in Section 8.2 of AS 3798 - Guidelines on Earthworks for Commercial and Residential Developments - 2007. The project was classified as Type 1/2 requiring a minimum density ratio of 95.0% (standard compactive effort) within the area of fill placement.

A site inspection was conducted prior to any fill being placed on the Lot. On the completion of earthworks and after examining the test results and the materials used, we are of the opinion that the filling procedure conducted by Winslow Constructors Pty Ltd satisfied the requirements of AS 3798 in regard to the placement of fill on a Type 1/2 Project under Level 1 Supervision.

Accordingly, when classifying the site in accordance with the procedures presented in Section 2 of AS 2870 – Residential Slabs and Footings – Construction (2011), we are of the view that the bulk fill materials that were placed on this Lot by Winslow Constructors Pty Ltd can be considered as being placed in a controlled manner to a minimum density ratio of 95% (standard compactive effort).

### LIMITATIONS

The use of this Certificate is only appropriate for the field conditions present up to 4<sup>th</sup> April 2016.

A handwritten signature in black ink, appearing to read 'Griffin Brown', is written over a light blue horizontal line.

Griffin Brown



---

## FILL CERTIFICATE

PROJECT: Lot No 1914 (as per Drawing No 102419-19 C100 & C101)  
Aston Estate (Stage 19), Craigieburn

CLIENT: Winslow Constructors Pty Ltd  
50 Barry Road  
CAMPBELLFIELD VIC 3061

REPORT NO: 16025\_1914

DATE: 29/08/16

---

### SUMMARY

Civil Geotechnical Services were engaged by Winslow Constructors Pty Ltd to provide inspection and testing services on the earthworks associated with Lot 1914 of Aston Estate (Stage 19), Craigieburn, in a manner which would satisfy the criteria for Level 1 Supervision as specified in Section 8.2 of AS 3798 - Guidelines on Earthworks for Commercial and Residential Developments - 2007. The project was classified as Type 1/2 requiring a minimum density ratio of 95.0% (standard compactive effort) within the area of fill placement.

A site inspection was conducted prior to any fill being placed on the Lot. On the completion of earthworks and after examining the test results and the materials used, we are of the opinion that the filling procedure conducted by Winslow Constructors Pty Ltd satisfied the requirements of AS 3798 in regard to the placement of fill on a Type 1/2 Project under Level 1 Supervision.

Accordingly, when classifying the site in accordance with the procedures presented in Section 2 of AS 2870 – Residential Slabs and Footings – Construction (2011), we are of the view that the bulk fill materials that were placed on this Lot by Winslow Constructors Pty Ltd can be considered as being placed in a controlled manner to a minimum density ratio of 95% (standard compactive effort).

### LIMITATIONS

The use of this Certificate is only appropriate for the field conditions present up to 4<sup>th</sup> April 2016.

A handwritten signature in black ink, appearing to read 'Griffin Brown', written in a cursive style.

Griffin Brown



---

## FILL CERTIFICATE

PROJECT: Lot No 1915 (as per Drawing No 102419-19 C100 & C101)  
Aston Estate (Stage 19), Craigieburn

CLIENT: Winslow Constructors Pty Ltd  
50 Barry Road  
CAMPBELLFIELD VIC 3061

REPORT NO: 16025\_1915

DATE: 29/08/16

---

### SUMMARY

Civil Geotechnical Services were engaged by Winslow Constructors Pty Ltd to provide inspection and testing services on the earthworks associated with Lot 1915 of Aston Estate (Stage 19), Craigieburn, in a manner which would satisfy the criteria for Level 1 Supervision as specified in Section 8.2 of AS 3798 - Guidelines on Earthworks for Commercial and Residential Developments - 2007. The project was classified as Type 1/2 requiring a minimum density ratio of 95.0% (standard compactive effort) within the area of fill placement.

A site inspection was conducted prior to any fill being placed on the Lot. On the completion of earthworks and after examining the test results and the materials used, we are of the opinion that the filling procedure conducted by Winslow Constructors Pty Ltd satisfied the requirements of AS 3798 in regard to the placement of fill on a Type 1/2 Project under Level 1 Supervision.

Accordingly, when classifying the site in accordance with the procedures presented in Section 2 of AS 2870 – Residential Slabs and Footings – Construction (2011), we are of the view that the bulk fill materials that were placed on this Lot by Winslow Constructors Pty Ltd can be considered as being placed in a controlled manner to a minimum density ratio of 95% (standard compactive effort).

### LIMITATIONS

The use of this Certificate is only appropriate for the field conditions present up to 4<sup>th</sup> April 2016.

A handwritten signature in black ink, appearing to read 'Griffin Brown', written in a cursive style.

Griffin Brown



---

## FILL CERTIFICATE

PROJECT: Lot No 1916 (as per Drawing No 102419-19 C100 & C101)  
Aston Estate (Stage 19), Craigieburn

CLIENT: Winslow Constructors Pty Ltd  
50 Barry Road  
CAMPBELLFIELD VIC 3061

REPORT NO: 16025\_1916

DATE: 29/08/16

---

### SUMMARY

Civil Geotechnical Services were engaged by Winslow Constructors Pty Ltd to provide inspection and testing services on the earthworks associated with Lot 1916 of Aston Estate (Stage 19), Craigieburn, in a manner which would satisfy the criteria for Level 1 Supervision as specified in Section 8.2 of AS 3798 - Guidelines on Earthworks for Commercial and Residential Developments - 2007. The project was classified as Type 1/2 requiring a minimum density ratio of 95.0% (standard compactive effort) within the area of fill placement.

A site inspection was conducted prior to any fill being placed on the Lot. On the completion of earthworks and after examining the test results and the materials used, we are of the opinion that the filling procedure conducted by Winslow Constructors Pty Ltd satisfied the requirements of AS 3798 in regard to the placement of fill on a Type 1/2 Project under Level 1 Supervision.

Accordingly, when classifying the site in accordance with the procedures presented in Section 2 of AS 2870 – Residential Slabs and Footings – Construction (2011), we are of the view that the bulk fill materials that were placed on this Lot by Winslow Constructors Pty Ltd can be considered as being placed in a controlled manner to a minimum density ratio of 95% (standard compactive effort).

### LIMITATIONS

The use of this Certificate is only appropriate for the field conditions present up to 4<sup>th</sup> April 2016.

A handwritten signature in black ink, appearing to read 'Griffin Brown', is written over a light blue horizontal line.

Griffin Brown





---

## FILL CERTIFICATE

PROJECT: Lot No 1917 (as per Drawing No 102419-19 C100 & C101)  
Aston Estate (Stage 19), Craigieburn

CLIENT: Winslow Constructors Pty Ltd  
50 Barry Road  
CAMPBELLFIELD VIC 3061

REPORT NO: 16025\_1917

DATE: 29/08/16

---

### SUMMARY

Civil Geotechnical Services were engaged by Winslow Constructors Pty Ltd to provide inspection and testing services on the earthworks associated with Lot 1917 of Aston Estate (Stage 19), Craigieburn, in a manner which would satisfy the criteria for Level 1 Supervision as specified in Section 8.2 of AS 3798 - Guidelines on Earthworks for Commercial and Residential Developments - 2007. The project was classified as Type 1/2 requiring a minimum density ratio of 95.0% (standard compactive effort) within the area of fill placement.

A site inspection was conducted prior to any fill being placed on the Lot. On the completion of earthworks and after examining the test results and the materials used, we are of the opinion that the filling procedure conducted by Winslow Constructors Pty Ltd satisfied the requirements of AS 3798 in regard to the placement of fill on a Type 1/2 Project under Level 1 Supervision.

Accordingly, when classifying the site in accordance with the procedures presented in Section 2 of AS 2870 – Residential Slabs and Footings – Construction (2011), we are of the view that the bulk fill materials that were placed on this Lot by Winslow Constructors Pty Ltd can be considered as being placed in a controlled manner to a minimum density ratio of 95% (standard compactive effort).

### LIMITATIONS

The use of this Certificate is only appropriate for the field conditions present up to 4<sup>th</sup> April 2016.

A handwritten signature in black ink, appearing to read 'Griffin Brown', is written over a light blue horizontal line.

Griffin Brown



---

## FILL CERTIFICATE

PROJECT: Lot No 1918 (as per Drawing No 102419-19 C100 & C101)  
Aston Estate (Stage 19), Craigieburn

CLIENT: Winslow Constructors Pty Ltd  
50 Barry Road  
CAMPBELLFIELD VIC 3061

REPORT NO: 16025\_1918

DATE: 29/08/16

---

### SUMMARY

Civil Geotechnical Services were engaged by Winslow Constructors Pty Ltd to provide inspection and testing services on the earthworks associated with Lot 1918 of Aston Estate (Stage 19), Craigieburn, in a manner which would satisfy the criteria for Level 1 Supervision as specified in Section 8.2 of AS 3798 - Guidelines on Earthworks for Commercial and Residential Developments - 2007. The project was classified as Type 1/2 requiring a minimum density ratio of 95.0% (standard compactive effort) within the area of fill placement.

A site inspection was conducted prior to any fill being placed on the Lot. On the completion of earthworks and after examining the test results and the materials used, we are of the opinion that the filling procedure conducted by Winslow Constructors Pty Ltd satisfied the requirements of AS 3798 in regard to the placement of fill on a Type 1/2 Project under Level 1 Supervision.

Accordingly, when classifying the site in accordance with the procedures presented in Section 2 of AS 2870 – Residential Slabs and Footings – Construction (2011), we are of the view that the bulk fill materials that were placed on this Lot by Winslow Constructors Pty Ltd can be considered as being placed in a controlled manner to a minimum density ratio of 95% (standard compactive effort).

### LIMITATIONS

The use of this Certificate is only appropriate for the field conditions present up to 4<sup>th</sup> April 2016.

A handwritten signature in black ink, appearing to read 'Griffin Brown', is written over a horizontal line.

Griffin Brown



---

## FILL CERTIFICATE

PROJECT: Lot No 1919 (as per Drawing No 102419-19 C100 & C101)  
Aston Estate (Stage 19), Craigieburn

CLIENT: Winslow Constructors Pty Ltd  
50 Barry Road  
CAMPBELLFIELD VIC 3061

REPORT NO: 16025\_1919

DATE: 29/08/16

---

### SUMMARY

Civil Geotechnical Services were engaged by Winslow Constructors Pty Ltd to provide inspection and testing services on the earthworks associated with Lot 1919 of Aston Estate (Stage 19), Craigieburn, in a manner which would satisfy the criteria for Level 1 Supervision as specified in Section 8.2 of AS 3798 - Guidelines on Earthworks for Commercial and Residential Developments - 2007. The project was classified as Type 1/2 requiring a minimum density ratio of 95.0% (standard compactive effort) within the area of fill placement.

A site inspection was conducted prior to any fill being placed on the Lot. On the completion of earthworks and after examining the test results and the materials used, we are of the opinion that the filling procedure conducted by Winslow Constructors Pty Ltd satisfied the requirements of AS 3798 in regard to the placement of fill on a Type 1/2 Project under Level 1 Supervision.

Accordingly, when classifying the site in accordance with the procedures presented in Section 2 of AS 2870 – Residential Slabs and Footings – Construction (2011), we are of the view that the bulk fill materials that were placed on this Lot by Winslow Constructors Pty Ltd can be considered as being placed in a controlled manner to a minimum density ratio of 95% (standard compactive effort).

### LIMITATIONS

The use of this Certificate is only appropriate for the field conditions present up to 4<sup>th</sup> April 2016.

A handwritten signature in black ink, appearing to read 'Griffin Brown', is written over a light blue horizontal line.

Griffin Brown



---

## FILL CERTIFICATE

PROJECT: Lot No 1920 (as per Drawing No 102419-19 C100 & C101)  
Aston Estate (Stage 19), Craigieburn

CLIENT: Winslow Constructors Pty Ltd  
50 Barry Road  
CAMPBELLFIELD VIC 3061

REPORT NO: 16025\_1920

DATE: 29/08/16

---

### SUMMARY

Civil Geotechnical Services were engaged by Winslow Constructors Pty Ltd to provide inspection and testing services on the earthworks associated with Lot 1920 of Aston Estate (Stage 19), Craigieburn, in a manner which would satisfy the criteria for Level 1 Supervision as specified in Section 8.2 of AS 3798 - Guidelines on Earthworks for Commercial and Residential Developments - 2007. The project was classified as Type 1/2 requiring a minimum density ratio of 95.0% (standard compactive effort) within the area of fill placement.

A site inspection was conducted prior to any fill being placed on the Lot. On the completion of earthworks and after examining the test results and the materials used, we are of the opinion that the filling procedure conducted by Winslow Constructors Pty Ltd satisfied the requirements of AS 3798 in regard to the placement of fill on a Type 1/2 Project under Level 1 Supervision.

Accordingly, when classifying the site in accordance with the procedures presented in Section 2 of AS 2870 – Residential Slabs and Footings – Construction (2011), we are of the view that the bulk fill materials that were placed on this Lot by Winslow Constructors Pty Ltd can be considered as being placed in a controlled manner to a minimum density ratio of 95% (standard compactive effort).

### LIMITATIONS

The use of this Certificate is only appropriate for the field conditions present up to 4<sup>th</sup> April 2016.

A handwritten signature in black ink, appearing to read 'Griffin Brown', is written over a light blue horizontal line.

Griffin Brown



---

## FILL CERTIFICATE

PROJECT: Lot No 1921 (as per Drawing No 102419-19 C100 & C101)  
Aston Estate (Stage 19), Craigieburn

CLIENT: Winslow Constructors Pty Ltd  
50 Barry Road  
CAMPBELLFIELD VIC 3061

REPORT NO: 16025\_1921

DATE: 29/08/16

---

### SUMMARY

Civil Geotechnical Services were engaged by Winslow Constructors Pty Ltd to provide inspection and testing services on the earthworks associated with Lot 1921 of Aston Estate (Stage 19), Craigieburn, in a manner which would satisfy the criteria for Level 1 Supervision as specified in Section 8.2 of AS 3798 - Guidelines on Earthworks for Commercial and Residential Developments - 2007. The project was classified as Type 1/2 requiring a minimum density ratio of 95.0% (standard compactive effort) within the area of fill placement.

A site inspection was conducted prior to any fill being placed on the Lot. On the completion of earthworks and after examining the test results and the materials used, we are of the opinion that the filling procedure conducted by Winslow Constructors Pty Ltd satisfied the requirements of AS 3798 in regard to the placement of fill on a Type 1/2 Project under Level 1 Supervision.

Accordingly, when classifying the site in accordance with the procedures presented in Section 2 of AS 2870 – Residential Slabs and Footings – Construction (2011), we are of the view that the bulk fill materials that were placed on this Lot by Winslow Constructors Pty Ltd can be considered as being placed in a controlled manner to a minimum density ratio of 95% (standard compactive effort).

### LIMITATIONS

The use of this Certificate is only appropriate for the field conditions present up to 4<sup>th</sup> April 2016.

A handwritten signature in black ink, appearing to read 'Griffin Brown', is written over a light blue horizontal line.

Griffin Brown



---

## FILL CERTIFICATE

PROJECT: Lot No 1922 (as per Drawing No 102419-19 C100 & C101)  
Aston Estate (Stage 19), Craigieburn

CLIENT: Winslow Constructors Pty Ltd  
50 Barry Road  
CAMPBELLFIELD VIC 3061

REPORT NO: 16025\_1922

DATE: 29/08/16

---

### SUMMARY

Civil Geotechnical Services were engaged by Winslow Constructors Pty Ltd to provide inspection and testing services on the earthworks associated with Lot 1922 of Aston Estate (Stage 19), Craigieburn, in a manner which would satisfy the criteria for Level 1 Supervision as specified in Section 8.2 of AS 3798 - Guidelines on Earthworks for Commercial and Residential Developments - 2007. The project was classified as Type 1/2 requiring a minimum density ratio of 95.0% (standard compactive effort) within the area of fill placement.

A site inspection was conducted prior to any fill being placed on the Lot. On the completion of earthworks and after examining the test results and the materials used, we are of the opinion that the filling procedure conducted by Winslow Constructors Pty Ltd satisfied the requirements of AS 3798 in regard to the placement of fill on a Type 1/2 Project under Level 1 Supervision.

Accordingly, when classifying the site in accordance with the procedures presented in Section 2 of AS 2870 – Residential Slabs and Footings – Construction (2011), we are of the view that the bulk fill materials that were placed on this Lot by Winslow Constructors Pty Ltd can be considered as being placed in a controlled manner to a minimum density ratio of 95% (standard compactive effort).

### LIMITATIONS

The use of this Certificate is only appropriate for the field conditions present up to 4<sup>th</sup> April 2016.

A handwritten signature in black ink, appearing to read 'Griffin Brown', written in a cursive style.

Griffin Brown



---

## FILL CERTIFICATE

PROJECT: Lot No 1923 (as per Drawing No 102419-19 C100 & C101)  
Aston Estate (Stage 19), Craigieburn

CLIENT: Winslow Constructors Pty Ltd  
50 Barry Road  
CAMPBELLFIELD VIC 3061

REPORT NO: 16025\_1923

DATE: 29/08/16

---

### SUMMARY

Civil Geotechnical Services were engaged by Winslow Constructors Pty Ltd to provide inspection and testing services on the earthworks associated with Lot 1923 of Aston Estate (Stage 19), Craigieburn, in a manner which would satisfy the criteria for Level 1 Supervision as specified in Section 8.2 of AS 3798 - Guidelines on Earthworks for Commercial and Residential Developments - 2007. The project was classified as Type 1/2 requiring a minimum density ratio of 95.0% (standard compactive effort) within the area of fill placement.

A site inspection was conducted prior to any fill being placed on the Lot. On the completion of earthworks and after examining the test results and the materials used, we are of the opinion that the filling procedure conducted by Winslow Constructors Pty Ltd satisfied the requirements of AS 3798 in regard to the placement of fill on a Type 1/2 Project under Level 1 Supervision.

Accordingly, when classifying the site in accordance with the procedures presented in Section 2 of AS 2870 – Residential Slabs and Footings – Construction (2011), we are of the view that the bulk fill materials that were placed on this Lot by Winslow Constructors Pty Ltd can be considered as being placed in a controlled manner to a minimum density ratio of 95% (standard compactive effort).

### LIMITATIONS

The use of this Certificate is only appropriate for the field conditions present up to 4<sup>th</sup> April 2016.

A handwritten signature in black ink, appearing to read 'Griffin Brown', written in a cursive style.

Griffin Brown



---

## FILL CERTIFICATE

PROJECT: Lot No 1924 (as per Drawing No 102419-19 C100 & C101)  
Aston Estate (Stage 19), Craigieburn

CLIENT: Winslow Constructors Pty Ltd  
50 Barry Road  
CAMPBELLFIELD VIC 3061

REPORT NO: 16025\_1924

DATE: 29/08/16

---

### SUMMARY

Civil Geotechnical Services were engaged by Winslow Constructors Pty Ltd to provide inspection and testing services on the earthworks associated with Lot 1924 of Aston Estate (Stage 19), Craigieburn, in a manner which would satisfy the criteria for Level 1 Supervision as specified in Section 8.2 of AS 3798 - Guidelines on Earthworks for Commercial and Residential Developments - 2007. The project was classified as Type 1/2 requiring a minimum density ratio of 95.0% (standard compactive effort) within the area of fill placement.

A site inspection was conducted prior to any fill being placed on the Lot. On the completion of earthworks and after examining the test results and the materials used, we are of the opinion that the filling procedure conducted by Winslow Constructors Pty Ltd satisfied the requirements of AS 3798 in regard to the placement of fill on a Type 1/2 Project under Level 1 Supervision.

Accordingly, when classifying the site in accordance with the procedures presented in Section 2 of AS 2870 – Residential Slabs and Footings – Construction (2011), we are of the view that the bulk fill materials that were placed on this Lot by Winslow Constructors Pty Ltd can be considered as being placed in a controlled manner to a minimum density ratio of 95% (standard compactive effort).

### LIMITATIONS

The use of this Certificate is only appropriate for the field conditions present up to 4<sup>th</sup> April 2016.

A handwritten signature in black ink, appearing to read 'Griffin Brown', is written over a light blue horizontal line.

Griffin Brown





---

## FILL CERTIFICATE

PROJECT: Lot No 1925 (as per Drawing No 102419-19 C100 & C101)  
Aston Estate (Stage 19), Craigieburn

CLIENT: Winslow Constructors Pty Ltd  
50 Barry Road  
CAMPBELLFIELD VIC 3061

REPORT NO: 16025\_1925

DATE: 29/08/16

---

### SUMMARY

Civil Geotechnical Services were engaged by Winslow Constructors Pty Ltd to provide inspection and testing services on the earthworks associated with Lot 1925 of Aston Estate (Stage 19), Craigieburn, in a manner which would satisfy the criteria for Level 1 Supervision as specified in Section 8.2 of AS 3798 - Guidelines on Earthworks for Commercial and Residential Developments - 2007. The project was classified as Type 1/2 requiring a minimum density ratio of 95.0% (standard compactive effort) within the area of fill placement.

A site inspection was conducted prior to any fill being placed on the Lot. On the completion of earthworks and after examining the test results and the materials used, we are of the opinion that the filling procedure conducted by Winslow Constructors Pty Ltd satisfied the requirements of AS 3798 in regard to the placement of fill on a Type 1/2 Project under Level 1 Supervision.

Accordingly, when classifying the site in accordance with the procedures presented in Section 2 of AS 2870 – Residential Slabs and Footings – Construction (2011), we are of the view that the bulk fill materials that were placed on this Lot by Winslow Constructors Pty Ltd can be considered as being placed in a controlled manner to a minimum density ratio of 95% (standard compactive effort).

### LIMITATIONS

The use of this Certificate is only appropriate for the field conditions present up to 4<sup>th</sup> April 2016.

A handwritten signature in black ink, appearing to read 'Griffin Brown', is written over a light blue horizontal line.

Griffin Brown



---

## FILL CERTIFICATE

PROJECT: Lot No 1926 (as per Drawing No 102419-19 C100 & C101)  
Aston Estate (Stage 19), Craigieburn

CLIENT: Winslow Constructors Pty Ltd  
50 Barry Road  
CAMPBELLFIELD VIC 3061

REPORT NO: 16025\_1926

DATE: 29/08/16

---

### SUMMARY

Civil Geotechnical Services were engaged by Winslow Constructors Pty Ltd to provide inspection and testing services on the earthworks associated with Lot 1926 of Aston Estate (Stage 19), Craigieburn, in a manner which would satisfy the criteria for Level 1 Supervision as specified in Section 8.2 of AS 3798 - Guidelines on Earthworks for Commercial and Residential Developments - 2007. The project was classified as Type 1/2 requiring a minimum density ratio of 95.0% (standard compactive effort) within the area of fill placement.

A site inspection was conducted prior to any fill being placed on the Lot. On the completion of earthworks and after examining the test results and the materials used, we are of the opinion that the filling procedure conducted by Winslow Constructors Pty Ltd satisfied the requirements of AS 3798 in regard to the placement of fill on a Type 1/2 Project under Level 1 Supervision.

Accordingly, when classifying the site in accordance with the procedures presented in Section 2 of AS 2870 – Residential Slabs and Footings – Construction (2011), we are of the view that the bulk fill materials that were placed on this Lot by Winslow Constructors Pty Ltd can be considered as being placed in a controlled manner to a minimum density ratio of 95% (standard compactive effort).

### LIMITATIONS

The use of this Certificate is only appropriate for the field conditions present up to 4<sup>th</sup> April 2016.

A handwritten signature in black ink, appearing to read 'Griffin Brown', written in a cursive style.

Griffin Brown



---

## FILL CERTIFICATE

PROJECT: Lot No 1927 (as per Drawing No 102419-19 C100 & C101)  
Aston Estate (Stage 19), Craigieburn

CLIENT: Winslow Constructors Pty Ltd  
50 Barry Road  
CAMPBELLFIELD VIC 3061

REPORT NO: 16025\_1927

DATE: 29/08/16

---

### SUMMARY

Civil Geotechnical Services were engaged by Winslow Constructors Pty Ltd to provide inspection and testing services on the earthworks associated with Lot 1927 of Aston Estate (Stage 19), Craigieburn, in a manner which would satisfy the criteria for Level 1 Supervision as specified in Section 8.2 of AS 3798 - Guidelines on Earthworks for Commercial and Residential Developments - 2007. The project was classified as Type 1/2 requiring a minimum density ratio of 95.0% (standard compactive effort) within the area of fill placement.

A site inspection was conducted prior to any fill being placed on the Lot. On the completion of earthworks and after examining the test results and the materials used, we are of the opinion that the filling procedure conducted by Winslow Constructors Pty Ltd satisfied the requirements of AS 3798 in regard to the placement of fill on a Type 1/2 Project under Level 1 Supervision.

Accordingly, when classifying the site in accordance with the procedures presented in Section 2 of AS 2870 – Residential Slabs and Footings – Construction (2011), we are of the view that the bulk fill materials that were placed on this Lot by Winslow Constructors Pty Ltd can be considered as being placed in a controlled manner to a minimum density ratio of 95% (standard compactive effort).

### LIMITATIONS

The use of this Certificate is only appropriate for the field conditions present up to 4<sup>th</sup> April 2016.

A handwritten signature in black ink, appearing to read 'Griffin Brown', is written over a light blue horizontal line.

Griffin Brown



---

## FILL CERTIFICATE

PROJECT: Lot No 1928 (as per Drawing No 102419-19 C100 & C101)  
Aston Estate (Stage 19), Craigieburn

CLIENT: Winslow Constructors Pty Ltd  
50 Barry Road  
CAMPBELLFIELD VIC 3061

REPORT NO: 16025\_1928

DATE: 29/08/16

---

### SUMMARY

Civil Geotechnical Services were engaged by Winslow Constructors Pty Ltd to provide inspection and testing services on the earthworks associated with Lot 1928 of Aston Estate (Stage 19), Craigieburn, in a manner which would satisfy the criteria for Level 1 Supervision as specified in Section 8.2 of AS 3798 - Guidelines on Earthworks for Commercial and Residential Developments - 2007. The project was classified as Type 1/2 requiring a minimum density ratio of 95.0% (standard compactive effort) within the area of fill placement.

A site inspection was conducted prior to any fill being placed on the Lot. On the completion of earthworks and after examining the test results and the materials used, we are of the opinion that the filling procedure conducted by Winslow Constructors Pty Ltd satisfied the requirements of AS 3798 in regard to the placement of fill on a Type 1/2 Project under Level 1 Supervision.

Accordingly, when classifying the site in accordance with the procedures presented in Section 2 of AS 2870 – Residential Slabs and Footings – Construction (2011), we are of the view that the bulk fill materials that were placed on this Lot by Winslow Constructors Pty Ltd can be considered as being placed in a controlled manner to a minimum density ratio of 95% (standard compactive effort).

### LIMITATIONS

The use of this Certificate is only appropriate for the field conditions present up to 4<sup>th</sup> April 2016.

A handwritten signature in black ink, appearing to read 'Griffin Brown', is written over a light blue horizontal line.

Griffin Brown



---

## FILL CERTIFICATE

PROJECT: Lot No 1929 (as per Drawing No 102419-19 C100 & C101)  
Aston Estate (Stage 19), Craigieburn

CLIENT: Winslow Constructors Pty Ltd  
50 Barry Road  
CAMPBELLFIELD VIC 3061

REPORT NO: 16025\_1929

DATE: 29/08/16

---

### SUMMARY

Civil Geotechnical Services were engaged by Winslow Constructors Pty Ltd to provide inspection and testing services on the earthworks associated with Lot 1929 of Aston Estate (Stage 19), Craigieburn, in a manner which would satisfy the criteria for Level 1 Supervision as specified in Section 8.2 of AS 3798 - Guidelines on Earthworks for Commercial and Residential Developments - 2007. The project was classified as Type 1/2 requiring a minimum density ratio of 95.0% (standard compactive effort) within the area of fill placement.

A site inspection was conducted prior to any fill being placed on the Lot. On the completion of earthworks and after examining the test results and the materials used, we are of the opinion that the filling procedure conducted by Winslow Constructors Pty Ltd satisfied the requirements of AS 3798 in regard to the placement of fill on a Type 1/2 Project under Level 1 Supervision.

Accordingly, when classifying the site in accordance with the procedures presented in Section 2 of AS 2870 – Residential Slabs and Footings – Construction (2011), we are of the view that the bulk fill materials that were placed on this Lot by Winslow Constructors Pty Ltd can be considered as being placed in a controlled manner to a minimum density ratio of 95% (standard compactive effort).

### LIMITATIONS

The use of this Certificate is only appropriate for the field conditions present up to 4<sup>th</sup> April 2016.

A handwritten signature in black ink, appearing to read 'Griffin Brown', is written over a light blue horizontal line.

Griffin Brown



---

## FILL CERTIFICATE

PROJECT: Lot No 1930 (as per Drawing No 102419-19 C100 & C101)  
Aston Estate (Stage 19), Craigieburn

CLIENT: Winslow Constructors Pty Ltd  
50 Barry Road  
CAMPBELLFIELD VIC 3061

REPORT NO: 16025\_1930

DATE: 29/08/16

---

### SUMMARY

Civil Geotechnical Services were engaged by Winslow Constructors Pty Ltd to provide inspection and testing services on the earthworks associated with Lot 1930 of Aston Estate (Stage 19), Craigieburn, in a manner which would satisfy the criteria for Level 1 Supervision as specified in Section 8.2 of AS 3798 - Guidelines on Earthworks for Commercial and Residential Developments - 2007. The project was classified as Type 1/2 requiring a minimum density ratio of 95.0% (standard compactive effort) within the area of fill placement.

A site inspection was conducted prior to any fill being placed on the Lot. On the completion of earthworks and after examining the test results and the materials used, we are of the opinion that the filling procedure conducted by Winslow Constructors Pty Ltd satisfied the requirements of AS 3798 in regard to the placement of fill on a Type 1/2 Project under Level 1 Supervision.

Accordingly, when classifying the site in accordance with the procedures presented in Section 2 of AS 2870 – Residential Slabs and Footings – Construction (2011), we are of the view that the bulk fill materials that were placed on this Lot by Winslow Constructors Pty Ltd can be considered as being placed in a controlled manner to a minimum density ratio of 95% (standard compactive effort).

### LIMITATIONS

The use of this Certificate is only appropriate for the field conditions present up to 4<sup>th</sup> April 2016.

A handwritten signature in black ink, appearing to read 'Griffin Brown', is written over a light blue horizontal line.

Griffin Brown



---

## FILL CERTIFICATE

PROJECT: Lot No 1931 (as per Drawing No 102419-19 C100 & C101)  
Aston Estate (Stage 19), Craigieburn

CLIENT: Winslow Constructors Pty Ltd  
50 Barry Road  
CAMPBELLFIELD VIC 3061

REPORT NO: 16025\_1931

DATE: 29/08/16

---

### SUMMARY

Civil Geotechnical Services were engaged by Winslow Constructors Pty Ltd to provide inspection and testing services on the earthworks associated with Lot 1931 of Aston Estate (Stage 19), Craigieburn, in a manner which would satisfy the criteria for Level 1 Supervision as specified in Section 8.2 of AS 3798 - Guidelines on Earthworks for Commercial and Residential Developments - 2007. The project was classified as Type 1/2 requiring a minimum density ratio of 95.0% (standard compactive effort) within the area of fill placement.

A site inspection was conducted prior to any fill being placed on the Lot. On the completion of earthworks and after examining the test results and the materials used, we are of the opinion that the filling procedure conducted by Winslow Constructors Pty Ltd satisfied the requirements of AS 3798 in regard to the placement of fill on a Type 1/2 Project under Level 1 Supervision.

Accordingly, when classifying the site in accordance with the procedures presented in Section 2 of AS 2870 – Residential Slabs and Footings – Construction (2011), we are of the view that the bulk fill materials that were placed on this Lot by Winslow Constructors Pty Ltd can be considered as being placed in a controlled manner to a minimum density ratio of 95% (standard compactive effort).

### LIMITATIONS

The use of this Certificate is only appropriate for the field conditions present up to 4<sup>th</sup> April 2016.

A handwritten signature in black ink, appearing to read 'Griffin Brown', is written over a light blue horizontal line.

Griffin Brown



---

## FILL CERTIFICATE

PROJECT: Lot No 1932 (as per Drawing No 102419-19 C100 & C101)  
Aston Estate (Stage 19), Craigieburn

CLIENT: Winslow Constructors Pty Ltd  
50 Barry Road  
CAMPBELLFIELD VIC 3061

REPORT NO: 16025\_1932

DATE: 29/08/16

---

### SUMMARY

Civil Geotechnical Services were engaged by Winslow Constructors Pty Ltd to provide inspection and testing services on the earthworks associated with Lot 1932 of Aston Estate (Stage 19), Craigieburn, in a manner which would satisfy the criteria for Level 1 Supervision as specified in Section 8.2 of AS 3798 - Guidelines on Earthworks for Commercial and Residential Developments - 2007. The project was classified as Type 1/2 requiring a minimum density ratio of 95.0% (standard compactive effort) within the area of fill placement.

A site inspection was conducted prior to any fill being placed on the Lot. On the completion of earthworks and after examining the test results and the materials used, we are of the opinion that the filling procedure conducted by Winslow Constructors Pty Ltd satisfied the requirements of AS 3798 in regard to the placement of fill on a Type 1/2 Project under Level 1 Supervision.

Accordingly, when classifying the site in accordance with the procedures presented in Section 2 of AS 2870 – Residential Slabs and Footings – Construction (2011), we are of the view that the bulk fill materials that were placed on this Lot by Winslow Constructors Pty Ltd can be considered as being placed in a controlled manner to a minimum density ratio of 95% (standard compactive effort).

### LIMITATIONS

The use of this Certificate is only appropriate for the field conditions present up to 4<sup>th</sup> April 2016.

A handwritten signature in black ink, appearing to read 'Griffin Brown', written in a cursive style.

Griffin Brown





---

## FILL CERTIFICATE

PROJECT: Lot No 1933 (as per Drawing No 102419-19 C100 & C101)  
Aston Estate (Stage 19), Craigieburn

CLIENT: Winslow Constructors Pty Ltd  
50 Barry Road  
CAMPBELLFIELD VIC 3061

REPORT NO: 16025\_1933

DATE: 29/08/16

---

### SUMMARY

Civil Geotechnical Services were engaged by Winslow Constructors Pty Ltd to provide inspection and testing services on the earthworks associated with Lot 1933 of Aston Estate (Stage 19), Craigieburn, in a manner which would satisfy the criteria for Level 1 Supervision as specified in Section 8.2 of AS 3798 - Guidelines on Earthworks for Commercial and Residential Developments - 2007. The project was classified as Type 1/2 requiring a minimum density ratio of 95.0% (standard compactive effort) within the area of fill placement.

A site inspection was conducted prior to any fill being placed on the Lot. On the completion of earthworks and after examining the test results and the materials used, we are of the opinion that the filling procedure conducted by Winslow Constructors Pty Ltd satisfied the requirements of AS 3798 in regard to the placement of fill on a Type 1/2 Project under Level 1 Supervision.

Accordingly, when classifying the site in accordance with the procedures presented in Section 2 of AS 2870 – Residential Slabs and Footings – Construction (2011), we are of the view that the bulk fill materials that were placed on this Lot by Winslow Constructors Pty Ltd can be considered as being placed in a controlled manner to a minimum density ratio of 95% (standard compactive effort).

### LIMITATIONS

The use of this Certificate is only appropriate for the field conditions present up to 4<sup>th</sup> April 2016.

A handwritten signature in black ink, appearing to read 'Griffin Brown', is written over a light blue horizontal line.

Griffin Brown



---

## FILL CERTIFICATE

PROJECT: Lot No 1934 (as per Drawing No 102419-19 C100 & C101)  
Aston Estate (Stage 19), Craigieburn

CLIENT: Winslow Constructors Pty Ltd  
50 Barry Road  
CAMPBELLFIELD VIC 3061

REPORT NO: 16025\_1934

DATE: 29/08/16

---

### SUMMARY

Civil Geotechnical Services were engaged by Winslow Constructors Pty Ltd to provide inspection and testing services on the earthworks associated with Lot 1934 of Aston Estate (Stage 19), Craigieburn, in a manner which would satisfy the criteria for Level 1 Supervision as specified in Section 8.2 of AS 3798 - Guidelines on Earthworks for Commercial and Residential Developments - 2007. The project was classified as Type 1/2 requiring a minimum density ratio of 95.0% (standard compactive effort) within the area of fill placement.

A site inspection was conducted prior to any fill being placed on the Lot. On the completion of earthworks and after examining the test results and the materials used, we are of the opinion that the filling procedure conducted by Winslow Constructors Pty Ltd satisfied the requirements of AS 3798 in regard to the placement of fill on a Type 1/2 Project under Level 1 Supervision.

Accordingly, when classifying the site in accordance with the procedures presented in Section 2 of AS 2870 – Residential Slabs and Footings – Construction (2011), we are of the view that the bulk fill materials that were placed on this Lot by Winslow Constructors Pty Ltd can be considered as being placed in a controlled manner to a minimum density ratio of 95% (standard compactive effort).

### LIMITATIONS

The use of this Certificate is only appropriate for the field conditions present up to 4<sup>th</sup> April 2016.

A handwritten signature in black ink, appearing to read 'Griffin Brown', is written over a light blue horizontal line.

Griffin Brown



---

## FILL CERTIFICATE

PROJECT: Lot No 1935 (as per Drawing No 102419-19 C100 & C101)  
Aston Estate (Stage 19), Craigieburn

CLIENT: Winslow Constructors Pty Ltd  
50 Barry Road  
CAMPBELLFIELD VIC 3061

REPORT NO: 16025\_1935

DATE: 29/08/16

---

### SUMMARY

Civil Geotechnical Services were engaged by Winslow Constructors Pty Ltd to provide inspection and testing services on the earthworks associated with Lot 1935 of Aston Estate (Stage 19), Craigieburn, in a manner which would satisfy the criteria for Level 1 Supervision as specified in Section 8.2 of AS 3798 - Guidelines on Earthworks for Commercial and Residential Developments - 2007. The project was classified as Type 1/2 requiring a minimum density ratio of 95.0% (standard compactive effort) within the area of fill placement.

A site inspection was conducted prior to any fill being placed on the Lot. On the completion of earthworks and after examining the test results and the materials used, we are of the opinion that the filling procedure conducted by Winslow Constructors Pty Ltd satisfied the requirements of AS 3798 in regard to the placement of fill on a Type 1/2 Project under Level 1 Supervision.

Accordingly, when classifying the site in accordance with the procedures presented in Section 2 of AS 2870 – Residential Slabs and Footings – Construction (2011), we are of the view that the bulk fill materials that were placed on this Lot by Winslow Constructors Pty Ltd can be considered as being placed in a controlled manner to a minimum density ratio of 95% (standard compactive effort).

### LIMITATIONS

The use of this Certificate is only appropriate for the field conditions present up to 4<sup>th</sup> April 2016.

A handwritten signature in black ink, appearing to read 'Griffin Brown', is written over a light blue horizontal line.

Griffin Brown



---

## FILL CERTIFICATE

PROJECT: Lot No 1936 (as per Drawing No 102419-19 C100 & C101)  
Aston Estate (Stage 19), Craigieburn

CLIENT: Winslow Constructors Pty Ltd  
50 Barry Road  
CAMPBELLFIELD VIC 3061

REPORT NO: 16025\_1936

DATE: 29/08/16

---

### SUMMARY

Civil Geotechnical Services were engaged by Winslow Constructors Pty Ltd to provide inspection and testing services on the earthworks associated with Lot 1936 of Aston Estate (Stage 19), Craigieburn, in a manner which would satisfy the criteria for Level 1 Supervision as specified in Section 8.2 of AS 3798 - Guidelines on Earthworks for Commercial and Residential Developments - 2007. The project was classified as Type 1/2 requiring a minimum density ratio of 95.0% (standard compactive effort) within the area of fill placement.

A site inspection was conducted prior to any fill being placed on the Lot. On the completion of earthworks and after examining the test results and the materials used, we are of the opinion that the filling procedure conducted by Winslow Constructors Pty Ltd satisfied the requirements of AS 3798 in regard to the placement of fill on a Type 1/2 Project under Level 1 Supervision.

Accordingly, when classifying the site in accordance with the procedures presented in Section 2 of AS 2870 – Residential Slabs and Footings – Construction (2011), we are of the view that the bulk fill materials that were placed on this Lot by Winslow Constructors Pty Ltd can be considered as being placed in a controlled manner to a minimum density ratio of 95% (standard compactive effort).

### LIMITATIONS

The use of this Certificate is only appropriate for the field conditions present up to 4<sup>th</sup> April 2016.

A handwritten signature in black ink, appearing to read 'Griffin Brown', is written over a light blue horizontal line.

Griffin Brown



---

## FILL CERTIFICATE

PROJECT: Lot No 1937 (as per Drawing No 102419-19 C100 & C101)  
Aston Estate (Stage 19), Craigieburn

CLIENT: Winslow Constructors Pty Ltd  
50 Barry Road  
CAMPBELLFIELD VIC 3061

REPORT NO: 16025\_1937

DATE: 29/08/16

---

### SUMMARY

Civil Geotechnical Services were engaged by Winslow Constructors Pty Ltd to provide inspection and testing services on the earthworks associated with Lot 1937 of Aston Estate (Stage 19), Craigieburn, in a manner which would satisfy the criteria for Level 1 Supervision as specified in Section 8.2 of AS 3798 - Guidelines on Earthworks for Commercial and Residential Developments - 2007. The project was classified as Type 1/2 requiring a minimum density ratio of 95.0% (standard compactive effort) within the area of fill placement.

A site inspection was conducted prior to any fill being placed on the Lot. On the completion of earthworks and after examining the test results and the materials used, we are of the opinion that the filling procedure conducted by Winslow Constructors Pty Ltd satisfied the requirements of AS 3798 in regard to the placement of fill on a Type 1/2 Project under Level 1 Supervision.

Accordingly, when classifying the site in accordance with the procedures presented in Section 2 of AS 2870 – Residential Slabs and Footings – Construction (2011), we are of the view that the bulk fill materials that were placed on this Lot by Winslow Constructors Pty Ltd can be considered as being placed in a controlled manner to a minimum density ratio of 95% (standard compactive effort).

### LIMITATIONS

The use of this Certificate is only appropriate for the field conditions present up to 4<sup>th</sup> April 2016.

A handwritten signature in black ink, appearing to read 'Griffin Brown', written in a cursive style.

Griffin Brown



---

## FILL CERTIFICATE

PROJECT: Lot No 1938 (as per Drawing No 102419-19 C100 & C101)  
Aston Estate (Stage 19), Craigieburn

CLIENT: Winslow Constructors Pty Ltd  
50 Barry Road  
CAMPBELLFIELD VIC 3061

REPORT NO: 16025\_1938

DATE: 29/08/16

---

### SUMMARY

Civil Geotechnical Services were engaged by Winslow Constructors Pty Ltd to provide inspection and testing services on the earthworks associated with Lot 1938 of Aston Estate (Stage 19), Craigieburn, in a manner which would satisfy the criteria for Level 1 Supervision as specified in Section 8.2 of AS 3798 - Guidelines on Earthworks for Commercial and Residential Developments - 2007. The project was classified as Type 1/2 requiring a minimum density ratio of 95.0% (standard compactive effort) within the area of fill placement.

A site inspection was conducted prior to any fill being placed on the Lot. On the completion of earthworks and after examining the test results and the materials used, we are of the opinion that the filling procedure conducted by Winslow Constructors Pty Ltd satisfied the requirements of AS 3798 in regard to the placement of fill on a Type 1/2 Project under Level 1 Supervision.

Accordingly, when classifying the site in accordance with the procedures presented in Section 2 of AS 2870 – Residential Slabs and Footings – Construction (2011), we are of the view that the bulk fill materials that were placed on this Lot by Winslow Constructors Pty Ltd can be considered as being placed in a controlled manner to a minimum density ratio of 95% (standard compactive effort).

### LIMITATIONS

The use of this Certificate is only appropriate for the field conditions present up to 4<sup>th</sup> April 2016.

A handwritten signature in black ink, appearing to read 'Griffin Brown', is written over a light blue horizontal line.

Griffin Brown



**CIVIL GEOTECHNICAL SERVICES**  
**ABN 26 474 013 724**  
**PO Box 678 Croydon Vic 3136**  
**Telephone: 9723 0744 Facsimile: 9723 0799**

16<sup>th</sup> January 2017

Our Reference: 16025:GB101

Winslow Constructors Pty Ltd  
50 Barry Road  
CAMPBELLFIELD VIC 3061

Dear Sirs,

**RE: LEVEL 1 EARTHWORKS INSPECTION AND TESTING**  
**ASTON ESTATE – STAGE 19, CRAIGIEBURN**

Please find attached our Report Nos 16025/R001 to 16025/R005 that relate to the field density testing that was conducted within the filled allotments at the above subdivision. The level 1 inspections and associated field density testing commenced in late January 2016 and was completed in early April 2016.

The inspections and testing of the earthworks was undertaken in general accordance with the Level 1 requirements of AS 3798 - Guidelines on Earthworks for Commercial and Residential Developments.

The site inspection and testing was performed by experienced geotechnicians from this office. Any areas that were deemed unsatisfactory were reworked and retested under their supervision. The testing was performed to the relevant Australian Standards and the accompanying test reports carry NATA endorsement. The attached compaction results, which were located randomly throughout the fill profile, are considered to be representative of the bulk fill materials that were placed across the reported allotments by Winslow Constructors during the aforementioned period. The approximate locations of the field density tests can be seen on the attached plan (Figure 1).

We are of the view that the bulk fill materials that have been placed across the reported allotments by Winslow Constructors during the aforementioned period can be considered as having been placed in a controlled manner to a minimum density ratio of 95% (standard compactive effort).

Please contact the undersigned if you require any additional information.

Civil Geotechnical Services

A handwritten signature in black ink, appearing to read 'Griffin Brown', written over a white background.

Griffin Brown

FIGURE 1



**CIVIL LEGEND**

- PROPOSED ELECTRICITY
- PROPOSED GAS
- PROPOSED WATER
- PROPOSED SEWER
- BRANCH SEWER
- PROPOSED TELECOMMUNICATIONS
- PROPOSED WATER
- PROPOSED WASTEWATER
- EXISTING ELECTRICITY
- EXISTING GAS
- EXISTING SEWER
- EXISTING TELECOMMUNICATIONS
- EXISTING WATER
- EXISTING WASTEWATER
- EXISTING TREE
- EXISTING TREE TO BE REMOVED
- PROPOSED RETAINING WALL
- NEW FINISHED SURFACE CONTOUR
- EXISTING SPACE CONTOUR
- CONCRETE EDGE STRIP
- NO ROAD SHOW IS SHOWN
- STREET SIGN
- LOT ELEVATION
- LOT GREATER THAN DOWN DEEP
- LOT GREATER THAN DOWN DEEP
- EXISTING TREE TO BE REMOVED
- GRADING LEGEND
- DIRECTION OF FILL
- LOT ELEVATION GREATER THAN DOWN DEEP
- LOT GREATER THAN DOWN DEEP
- LOT GREATER THAN DOWN DEEP

① APPROXIMATE FIELD DENSITY LOCATION

**NOTES**

1. CONTRACTOR TO BE SLOPE & MAINTAIN EXISTING CUT OFF ROAD TO EXISTING FINISHED SURFACE ELEVATION.

**WARNING**

PROPOSED SERVICES

THE LOCATION OF UNDERGROUND SERVICES IS INDICATIVE ONLY AND NOT TO BE USED FOR CONSTRUCTION. REFER TO APPROVED DOCUMENTATION FOR THE EXACT LOCATION OF ALL SERVICES.

**WARNING**

BEWARE OF UNDERGROUND SERVICES

THE LOCATION OF UNDERGROUND SERVICES ARE TO BE PROVISIONAL. SITE INVESTIGATIONS SHOULD TAKE ALL EXISTING SERVICES INTO ACCOUNT.

**SERVICES OFFSET TABLE**

STREET NAME	GAS	RECYCLED WATER	POTABLE WATER	TELOM	ELECTRICITY
PRECEDENCE DRIVE	2.10m S	2.20m S	3.00m S	0.25m N	1.20m E
ORTAKOY STREET	2.10m S	2.20m S	3.00m S	1.20m N	2.20m N
DIVANI PLACE	2.10m S	2.20m S	3.00m S	1.20m N	2.20m N
DEBONAIR PARADE	2.10m S	2.20m S	3.00m S	1.20m N	2.20m N

**ASTON ESTATE STAGE 19 PRELIMINARY NOT FOR CONSTRUCTION**

1024/19-19 C100 A

ASTON ESTATE STAGE 19 PRELIMINARY NOT FOR CONSTRUCTION

1024/19-19 C100 A

ASTON PEET

ASTON ESTATE STAGE 19 PRELIMINARY NOT FOR CONSTRUCTION

1024/19-19 C100 A

ASTON PEET

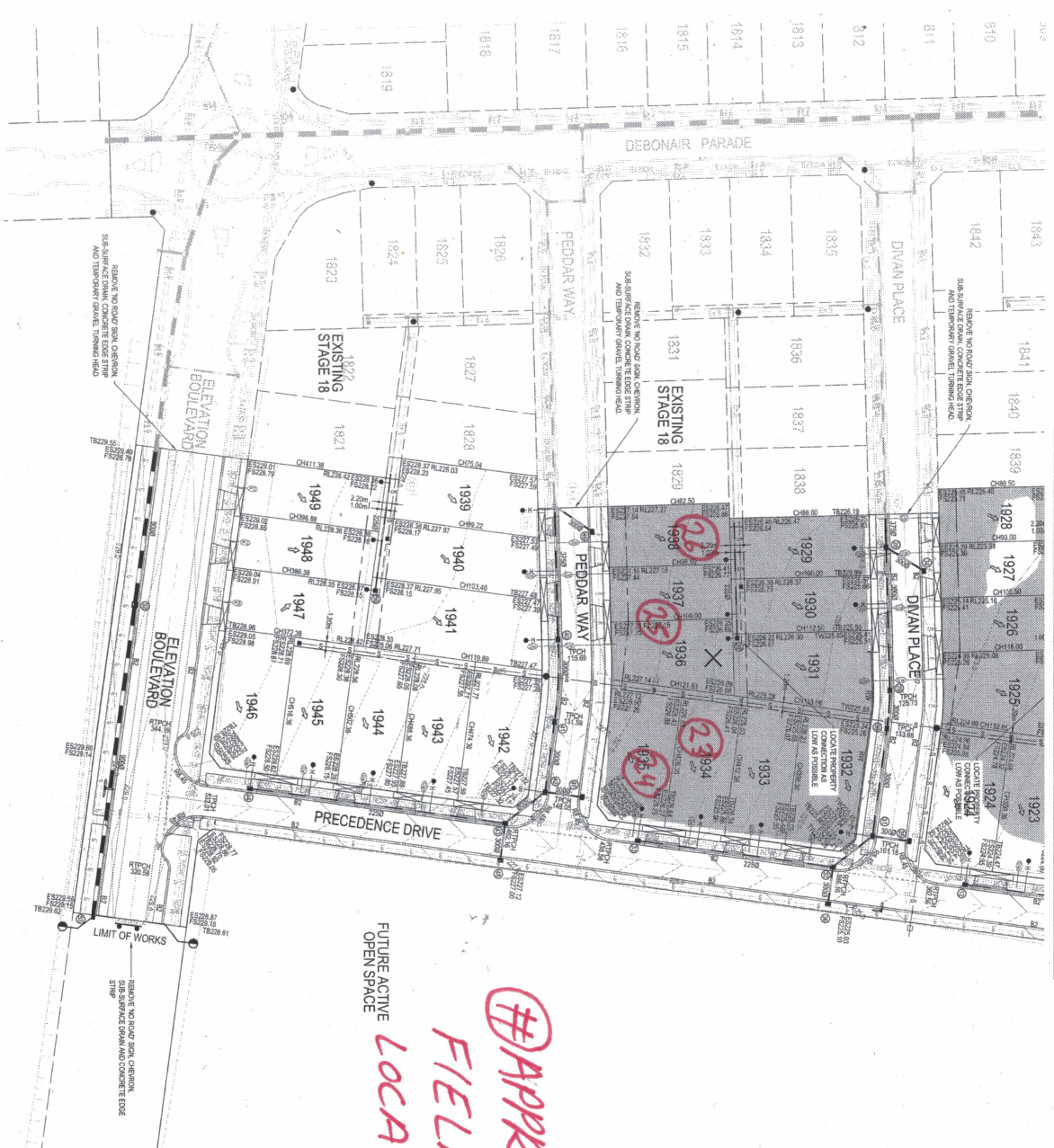
ASTON ESTATE STAGE 19 PRELIMINARY NOT FOR CONSTRUCTION

1024/19-19 C100 A

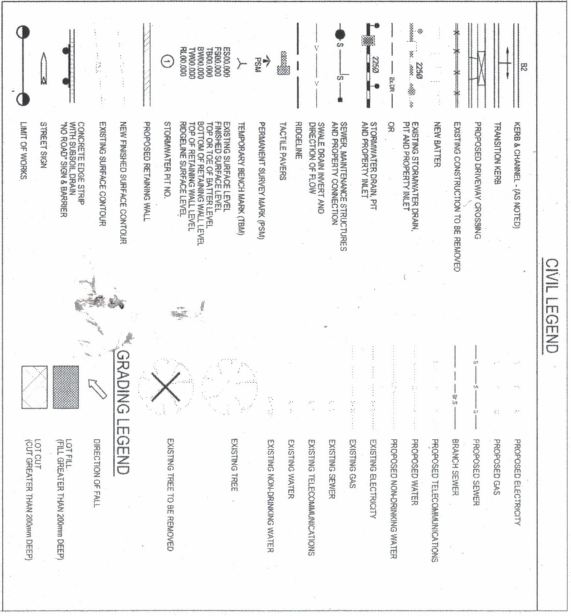


FOR CONTINUATION REFER TO DRAWING 102419-19-C100

FIGURE 1



# APPROXIMATE  
FIELD DENSITY  
LOCATION



NOTES  
1. CONTRACTOR TO SURVEY & IDENTIFY EXISTING UTILITY SERVICES TO BE REMOVED OR RELOCATED.

WARNING  
THE LOCATION SERVICES IS INDICATED ONLY AND ARE NOT TO BE USED FOR CONSTRUCTION PURPOSES TO ANY DEGREE. DOCUMENTATION BY THE CLIENT IS REQUIRED FOR CONSTRUCTION SERVICES.

WARNING  
BEWARE OF UNDERGROUND SERVICES  
THE LOCATIONS OF UNDERGROUND SERVICES ARE APPROXIMATE ONLY AND ARE NOT TO BE USED FOR CONSTRUCTION PURPOSES TO ANY DEGREE. DOCUMENTATION BY THE CLIENT IS REQUIRED FOR CONSTRUCTION SERVICES. SEE SHOWN.



SERVICES OFFSET TABLE					
STREET NAME	GAS	RECYCLED WATER	POTABLE WATER	TELCOM	ELECTRICITY
PRECEDENCE DRIVE	2.10m S	2.50m S	3.00m S	0.25m N	1.00m N
ONTARIO STREET	2.10m S	2.50m S	3.00m S	1.60m N	2.00m N
DIVAN PLACE	2.10m S	2.50m S	3.00m S	1.60m N	2.00m N
PEDDAR WAY	2.10m S	2.50m S	3.00m S	1.60m N	2.00m N
ELEVATION BOULEVARD	2.10m N	2.50m N	3.00m N	1.60m N	2.00m N

ASTON ESTATE  
STAGE 19  
HOME CITY COUNCIL

PRELIMINARY  
NOT FOR CONSTRUCTION

PROJECT NO: 102419-19  
SHEET NO: C101

DATE: 1/2/20

**astion PEET**

Professional Engineers  
102419-19-C101

**MENNARDT**  
Manufactured Products Pty Ltd  
Level 1, 482 Stirling Road, Manlyvale, VIC 3004

DATE: 1/2/20  
SHEET NO: 204-2

SCALE: 1:500 AT ORIGINAL SIZE

0 5 10 15 20 25m



## COMPACTION ASSESSMENT

Job No 16025  
 Report No 16025/R001  
 Date Issued 28/01/16

### CIVIL GEOTECHNICAL SERVICES

6 - 8 Rose Avenue, Croydon 3136

Client	WINSLOW CONSTRUCTORS PTY LTD (CAMPBELLFIELD)	Tested by	ZM
Project	ASTON - STAGE 19	Date tested	21/01/16
Location	CRAIGIEBURN	Checked by	JHF

<b>Feature</b>	<b>EARTHWORKS</b>	Layer thickness	200 mm	Time: 11:43
----------------	-------------------	-----------------	--------	-------------

Test procedure AS 1289.2.1.1 & 5.8.1

Test No	1	2	-	-	-	-
	REFER TO FIGURE 1	REFER TO FIGURE 1				
<i>Approximate depth below FSL</i>						
<i>Measurement depth</i>	mm	175	175	-	-	-
<i>Field wet density</i>	t/m <sup>3</sup>	1.91	1.92	-	-	-
<i>Field moisture content</i>	%	19.6	20.5	-	-	-

Test procedure AS 1289.5.7.1

Test No	1	2	-	-	-	-
<i>Compactive effort</i>	Standard					
<i>Oversize rock retained on sieve</i>	mm	19.0	19.0	-	-	-
<i>Percent of oversize material</i>	wet	0	0	-	-	-
<i>Peak Converted Wet Density</i>	t/m <sup>3</sup>	1.91	1.94	-	-	-
<i>Adjusted Peak Converted Wet Density</i>	t/m <sup>3</sup>	-	-	-	-	-
<i>Optimum Moisture Content</i>	%	22.0	23.0	-	-	-

<i>Moisture Variation From Optimum Moisture Content</i>	2.0% dry	2.5% dry	-	-	-	-
---	-------------	-------------	---	---	---	---

<b>Density Ratio ( R<sub>HD</sub> )</b>	<b>%</b>	<b>100.5</b>	<b>99.0</b>	-	-	-
---	----------	--------------	-------------	---	---	---

Material description

No 1 - 2 Clay Fill
--------------------



The results of the tests, calibrations and/or measurements included in this document are traceable to Australian/National standards. Accredited for compliance to ISO/IEC 17025  
 Accreditation No 9909

Approved Signatory : Justin Fry



## COMPACTION ASSESSMENT

Job No 16025  
 Report No 16025/R002  
 Date Issued 03/03/16

### CIVIL GEOTECHNICAL SERVICES

6 - 8 Rose Avenue, Croydon 3136

Client	WINSLOW CONSTRUCTORS PTY LTD (CAMPBELLFIELD)	Tested by	NB
Project	ASTON - STAGE 19	Date tested	29/02/16
Location	CRAIGIEBURN	Checked by	JHF

<b>Feature</b>	<b>EARTHWORKS</b>	Layer thickness	200 mm	Time: 12:34
----------------	-------------------	-----------------	--------	-------------

Test procedure AS 1289.2.1.1 & 5.8.1

Test No	3	4	5	6	7	8
	REFER TO FIGURE 1	REFER TO FIGURE 1	REFER TO FIGURE 1	REFER TO FIGURE 1	REFER TO FIGURE 1	REFER TO FIGURE 1
Approximate depth below FSL						
Measurement depth <i>mm</i>	175	175	175	175	175	175
Field wet density <i>t/m<sup>3</sup></i>	1.90	1.89	1.86	1.84	1.87	1.83
Field moisture content <i>%</i>	5.4	5.5	5.9	5.7	6.6	5.4

Test procedure AS 1289.5.7.1

Test No	3	4	5	6	7	8
Compactive effort	Standard					
Oversize rock retained on sieve <i>mm</i>	19.0	19.0	19.0	19.0	19.0	19.0
Percent of oversize material <i>wet</i>	0	0	0	0	1	0
Peak Converted Wet Density <i>t/m<sup>3</sup></i>	1.97	1.94	1.94	1.91	1.93	1.92
Adjusted Peak Converted Wet Density <i>t/m<sup>3</sup></i>	-	-	-	-	1.96	-
Optimum Moisture Content <i>%</i>	7.0	7.0	8.5	7.5	8.0	7.0

Moisture Variation From Optimum Moisture Content	1.5% dry	2.0% dry	2.5% dry	2.0% dry	2.0% dry	2.0% dry
--	-------------	-------------	-------------	-------------	-------------	-------------

<b>Density Ratio ( <math>R_{HD}</math> )</b>	<b>%</b>	<b>96.5</b>	<b>97.0</b>	<b>95.5</b>	<b>96.0</b>	<b>95.5</b>	<b>95.5</b>
--	----------	-------------	-------------	-------------	-------------	-------------	-------------

Material description

No 3 - 8 Clay Fill
--------------------



The results of the tests, calibrations and/or measurements included in this document are traceable to Australian/National standards. Accredited for compliance to ISO/IEC 17025  
 Accreditation No 9909

Approved Signatory : Justin Fry



# COMPACTION ASSESSMENT

Job No 16025  
 Report No 16025/R003  
 Date Issued 16/01/17

## CIVIL GEOTECHNICAL SERVICES

6 - 8 Rose Avenue, Croydon 3136

Client	WINSLOW CONSTRUCTORS PTY LTD (CAMPBELLFIELD)	Tested by	NB
Project	ASTON - STAGE 19	Date tested	04/04/16
Location	CRAIGIEBURN	Checked by	JHF

Feature	EARTHWORKS	Layer thickness	200 mm	Time: 09:09
---------	------------	-----------------	--------	-------------

Test procedure AS 1289.2.1.1 & 5.8.1

Test No	9	10	11	12	13	14
Location	REFER TO FIGURE 1	REFER TO FIGURE 1	REFER TO FIGURE 1	REFER TO FIGURE 1	REFER TO FIGURE 1	REFER TO FIGURE 1
Approximate depth below FSL						
Measurement depth mm	175	175	175	175	175	175
Field wet density t/m <sup>3</sup>	1.89	1.98	1.88	1.88	1.98	1.87
Field moisture content %	23.1	17.7	21.0	25.1	17.8	20.9

Test procedure AS 1289.5.7.1

Test No	9	10	11	12	13	14
Compactive effort	Standard					
Oversize rock retained on sieve mm	19.0	19.0	19.0	19.0	19.0	19.0
Percent of oversize material wet	0	0	3	0	0	0
Peak Converted Wet Density t/m <sup>3</sup>	1.92	1.93	1.89	1.93	1.99	1.94
Adjusted Peak Converted Wet Density t/m <sup>3</sup>	-	-	1.94	-	-	-
Optimum Moisture Content %	23.5	19.0	23.5	25.0	18.5	21.5

Moisture Variation From Optimum Moisture Content	0.5% dry	1.0% dry	2.5% dry	0.0%	0.5% dry	0.5% dry
--	----------	----------	----------	------	----------	----------

Density Ratio ( R <sub>HD</sub> )	%	98.5	102.5	97.0	97.5	100.0	96.5
-----------------------------------	---	------	-------	------	------	-------	------

Material description

No 9 - 14 Clay Fill
---------------------



The results of the tests, calibrations and/or measurements included in this document are traceable to Australian/National standards. Accredited for compliance to ISO/IEC 17025. Accreditation No 9909

Approved Signatory : Justin Fry



## COMPACTION ASSESSMENT

Job No 16025  
 Report No 16025/R004  
 Date Issued 18/04/16

### CIVIL GEOTECHNICAL SERVICES

6 - 8 Rose Avenue, Croydon 3136

Client	WINSLOW CONSTRUCTORS PTY LTD (CAMPBELLFIELD)	Tested by	NB
Project	ASTON - STAGE 19	Date tested	04/04/16
Location	CRAIGIEBURN	Checked by	JHF

<b>Feature</b>	<b>EARTHWORKS</b>	Layer thickness	200 mm	Time: 09:13
----------------	-------------------	-----------------	--------	-------------

Test procedure AS 1289.2.1.1 & 5.8.1

Test No	15	16	17	18	19	20
	REFER TO FIGURE 1	REFER TO FIGURE 1	REFER TO FIGURE 1	REFER TO FIGURE 1	REFER TO FIGURE 1	REFER TO FIGURE 1
<i>Approximate depth below FSL</i>						
<i>Measurement depth</i>	mm	175	175	175	175	175
<i>Field wet density</i>	$t/m^3$	1.91	1.95	1.87	1.92	1.90
<i>Field moisture content</i>	%	24.6	19.8	19.3	17.4	16.6

Test procedure AS 1289.5.7.1

Test No	15	16	17	18	19	20
<i>Compactive effort</i>	Standard					
<i>Oversize rock retained on sieve</i>	mm	19.0	19.0	19.0	19.0	19.0
<i>Percent of oversize material</i>	wet	0	0	2	0	2
<i>Peak Converted Wet Density</i>	$t/m^3$	1.98	2.01	1.94	2.01	1.95
<i>Adjusted Peak Converted Wet Density</i>	$t/m^3$	-	-	1.96	-	1.99
<i>Optimum Moisture Content</i>	%	24.5	22.0	21.0	19.5	19.0

<i>Moisture Variation From Optimum Moisture Content</i>	0.0%	2.0% dry	1.5% dry	2.0% dry	2.0% dry	1.5% dry
---	------	-------------	-------------	-------------	-------------	-------------

<b>Density Ratio ( <math>R_{HD}</math> )</b>	<b>%</b>	<b>96.5</b>	<b>97.0</b>	<b>96.0</b>	<b>95.5</b>	<b>95.5</b>	<b>103.0</b>
--	----------	-------------	-------------	-------------	-------------	-------------	--------------

Material description

No 15 - 20 Clay Fill
----------------------



The results of the tests, calibrations and/or measurements included in this document are traceable to Australian/National standards. Accredited for compliance to ISO/IEC 17025  
 Accreditation No 9909

Approved Signatory : Justin Fry



## COMPACTION ASSESSMENT

Job No 16025  
 Report No 16025/R005  
 Date Issued 18/04/16

### CIVIL GEOTECHNICAL SERVICES

6 - 8 Rose Avenue, Croydon 3136

Client	WINSLOW CONSTRUCTORS PTY LTD (CAMPBELLFIELD)	Tested by	NB
Project	ASTON - STAGE 19	Date tested	04/04/16
Location	CRAIGIEBURN	Checked by	JHF

<b>Feature</b>	<b>EARTHWORKS</b>	Layer thickness	200 mm	Time: 09:24
----------------	-------------------	-----------------	--------	-------------

Test procedure AS 1289.2.1.1 & 5.8.1

Test No	21	22	23	24	25	26
	REFER TO FIGURE 1	REFER TO FIGURE 1	REFER TO FIGURE 1	REFER TO FIGURE 1	REFER TO FIGURE 1	REFER TO FIGURE 1
<i>Approximate depth below FSL</i>						
<i>Measurement depth</i>	mm	175	175	175	175	175
<i>Field wet density</i>	$t/m^3$	1.87	1.88	2.01	1.89	1.96
<i>Field moisture content</i>	%	22.1	17.3	17.1	23.3	17.8

Test procedure AS 1289.5.7.1

Test No	21	22	23	24	25	26
<i>Compactive effort</i>	Standard					
<i>Oversize rock retained on sieve</i>	mm	19.0	19.0	19.0	19.0	19.0
<i>Percent of oversize material</i>	wet	0	1	0	0	0
<i>Peak Converted Wet Density</i>	$t/m^3$	1.88	1.92	1.94	1.90	1.95
<i>Adjusted Peak Converted Wet Density</i>	$t/m^3$	-	1.94	-	-	-
<i>Optimum Moisture Content</i>	%	24.0	19.5	18.5	26.0	19.0

<i>Moisture Variation From Optimum Moisture Content</i>	1.5% dry	2.0% dry	1.5% dry	2.5% dry	1.5% dry	1.5% dry
---	-------------	-------------	-------------	-------------	-------------	-------------

<b>Density Ratio ( <math>R_{HD}</math> )</b>	<b>%</b>	<b>99.5</b>	<b>97.5</b>	<b>104.0</b>	<b>100.0</b>	<b>100.5</b>	<b>103.5</b>
--	----------	-------------	-------------	--------------	--------------	--------------	--------------

Material description

No 21 - 26 Clay Fill
----------------------



The results of the tests, calibrations and/or measurements included in this document are traceable to Australian/National standards. Accredited for compliance to ISO/IEC 17025  
 Accreditation No 9909

Approved Signatory : Justin Fry