

GENERAL NOTES:

- ALL LEVELS ARE TO AUSTRALIAN HEIGHT DATUM AND ALL COORDINATES ARE TO MAP GRID OF AUSTRALIA (MGA) ZONE 55.
- ALL EXISTING SURFACE LEVELS SHOWN ON THE ENGINEERING DRAWINGS HAVE BEEN INTERPOLATED FROM A DIGITAL TERRAIN MODEL. THESE LEVELS HAVE BEEN USED AS THE BASIS FOR ALL ENGINEERING DESIGN AND DETERMINATION OF QUANTITIES AND ARE ACCURATE TO WITHIN ±0.05m.
- ALL WORKS TO BE CARRIED OUT IN ACCORDANCE WITH PEET'S MODIFIED AS4000-1997 - AMENDED FROM GENERAL CONDITIONS OF CONTRACT FOR USE IN VICTORIA, THE ROAD & DRAINAGE SPECIFICATION, APPROVED MUNICIPALITY SPECIFICATIONS AND STANDARD DRAWINGS AND TO THE SATISFACTION OF THE SUPERINTENDENT AND THE MUNICIPAL ENGINEER OR HIS REPRESENTATIVE.
- ROAD CHAINAGES REFER TO ROAD CENTRELINES. CHAINAGES FOR INTERSECTIONS AND CUL-DE-SACS REFER TO THE LIP OF KERB.
- THE LOCATION OF EXISTING SERVICES SHOULD BE DETERMINED BY THE CONTRACTOR PRIOR TO COMMENCING ANY EXCAVATION BY CONTACTING ALL LOCAL SERVICE AUTHORITIES. ANY EXISTING SERVICES SHOWN ON THESE DRAWINGS ARE OFFERED AS A GUIDE ONLY AND ARE NOT GUARANTEED AS CORRECT.
- WHERE REQUIRED ANY BUILDINGS, TROUGHS, FENCES AND OTHER STRUCTURES ON SITE ARE TO BE REMOVED AS DIRECTED BY THE ENGINEER. THE COST OF REMOVAL IS TO BE INCLUDED IN THE OVERALL EARTHWORKS FIGURE UNLESS A SPECIFIC ITEM FOR REMOVAL IS DENOTED IN THE SCHEDULE.
- ALL EXCAVATED ROCK AND SURPLUS SPOIL TO BE REMOVED AND DISPOSED OFF SITE UNLESS NOTED OTHERWISE.
- ALL FILLING ON LOTS AND WITHIN ROAD RESERVES GREATER THAN 200mm IS TO BE UNDERTAKEN USING LEVEL 1 SUPERVISION AND BE COMPLETED IN ACCORDANCE WITH AS 3798-2007. FILL AREAS ARE TO BE STRIPPED OF TOPSOIL, FILLED AND REPLACED WITH TOPSOIL (WHERE REQUIRED) TO OBTAIN THE FINAL LEVELS SHOWN ON THE DRAWINGS.
- FILLING MATERIAL IS TO BE IN ACCORDANCE WITH THE SPECIFICATION, AS 3798-2007 & TO THE SATISFACTION OF COUNCIL AND THE SUPERINTENDENT.
- ALL BATTERS SHALL BE 1 IN 6, UNLESS OTHERWISE SHOWN.
- NO FILL OR STOCKPILING OF MATERIAL IS TO BE PLACED ON ANY RESERVE FOR PUBLIC OPEN SPACE UNLESS OTHERWISE DIRECTED OR APPROVED BY THE SUPERINTENDENT.
- TBM'S TO BE RE-ESTABLISHED BY THE LICENSED SURVEYOR IF FOUND TO BE MISSING AT THE COMMENCEMENT OF CONSTRUCTION. THE CONTRACTOR WILL BE RESPONSIBLE FOR CARE AND MAINTENANCE OF T.B.M.'S THEREAFTER.
- AT LEAST 3 DAYS PRIOR TO COMMENCING WORK ON EXCAVATIONS IN EXCESS OF 150m DEEP, A NOTIFICATION FORM MUST BE SENT TO WORKSAFE. THE CONTRACTOR IS TO COMPLY WITH WORKSAFE, THE MINES (TRENCHES) REGULATION 1982, THE MINES ACT 1958 AND OCCUPATIONAL HEALTH AND SAFETY ACT 1985, 2004.
- ALL SERVICE TRENCHES UNDER DRIVEWAYS, FOOTPATHS AND PARKING BAYS TO BE BACKFILLED WITH CLASS 2 CRUSHED ROCK. SERVICE TRENCHES LESS THAN 750mm BEHIND KERB AND CHANNEL OR PAVED TRAFFIC AREAS ARE ALSO TO BE BACKFILLED WITH COMPACTED CLASS 2 CRUSHED ROCK.
- WHERE REQUIRED, ALL EXISTING DAMS, DEPRESSIONS AND DRAINS ARE TO BE BREACHED, DRAINED, DESLUGGED AND SHALL BE EXCAVATED TO A CLEAN FIRM BASE. THE SURFACE SHALL BE INSPECTED, APPROVED AND LEVELED BY THE ENGINEER PRIOR TO COMMENCEMENT OF FILLING. THE FILL SHALL BE APPROVED SELECTED ON SITE MATERIAL OR APPROVED IMPORTED MATERIAL. THE FILL SHALL BE PLACED UNDER CONTROLLED MOISTURE CONDITIONS IN ACCORDANCE WITH THE SPECIFICATION.
- NO BLASTING TO BE CARRIED OUT WITHIN THE MUNICIPALITY WITHOUT OBTAINING COUNCIL'S PERMISSION.
- GAS AND WATER CONDUITS ARE TO BE, Ø50mm . CLASS 12 P.V.C. - SINGLE SERVICE
Ø100mm . CLASS 12 P.V.C. - DUAL SERVICE (DRINKING AND NON DRINKING WATER)

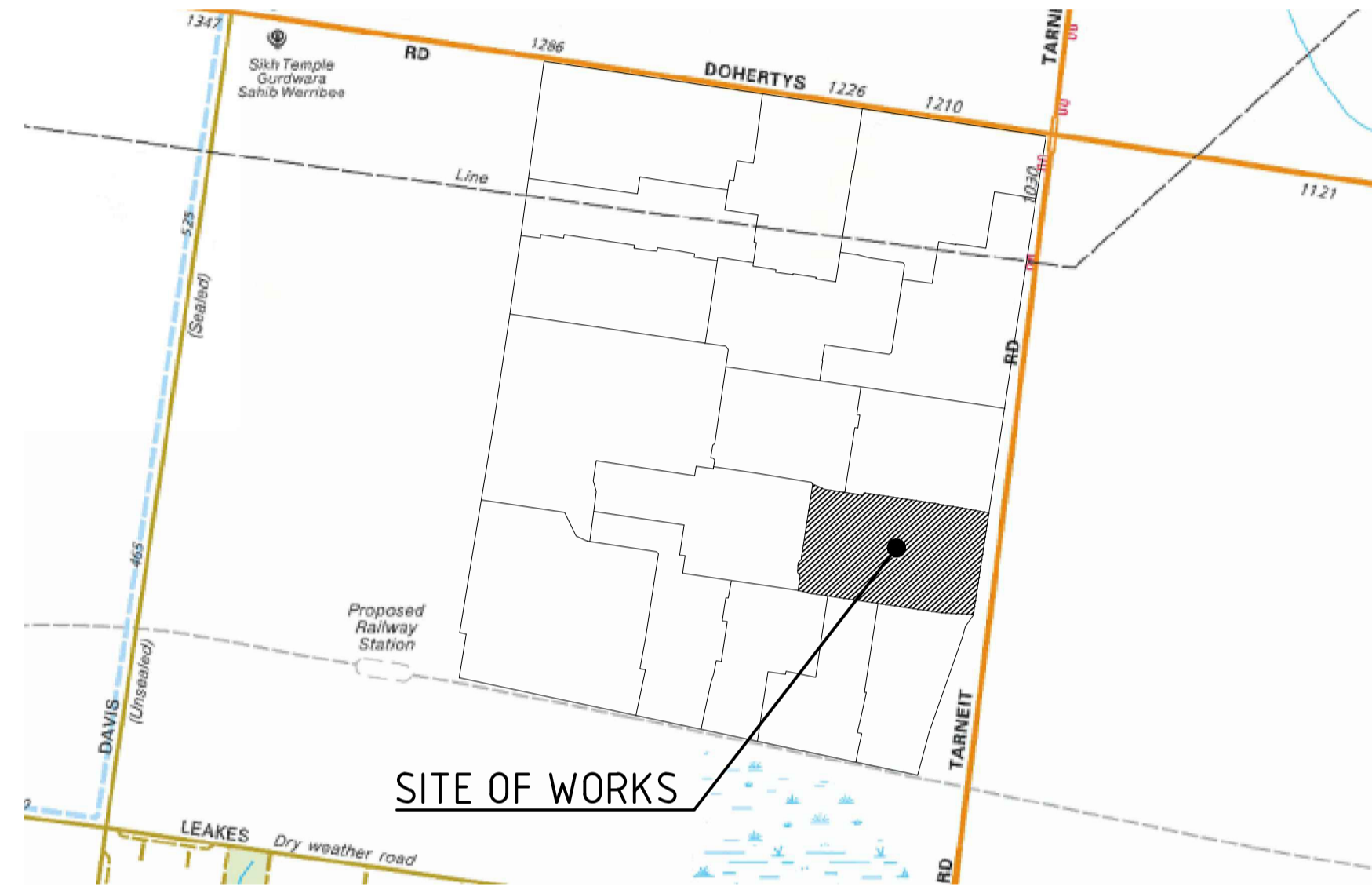
WITH THE FOLLOWING MINIMUM COVER TO FINISHED SURFACE LEVELS:
ROAD PAVEMENT - 0.80m
VERGE, FOOTPATHS - 0.45m
- ALL SERVICE CONDUIT TRENCHES UNDER ROAD PAVEMENTS TO BE BACKFILLED IN ACCORDANCE WITH RELEVANT MUNICIPALITY OR ROAD AUTHORITY SPECIFICATION.
- AG/SUBSOIL DRAIN TO BE LAID BEHIND KERB WHERE REQUIRED IN ACCORDANCE WITH THE COUNCIL STANDARD DRAWINGS AND CONNECTED TO UNDERGROUND DRAINAGE.
- ALL STORMWATER DRAINS ARE TO BE CLASS 2' R.C. PIPES UNLESS OTHERWISE SHOWN. ALL R.C. JOINTS ARE TO BE RUBBER RING JOINTED (R.R.J.).
- CENTRELINES OF ALL EASEMENT DRAINS ARE OFFSET 1.0m OR 2.2m (WHERE OUTSIDE OF SEWER) FROM THE PROPERTY LINE UNLESS SHOWN OTHERWISE.
- WHERE CURVED PIPE ALIGNMENTS ARE SHOWN ON THE FACE PLANS THEY ARE TO BE LAID PARALLEL TO THE BACK OF KERB, EXCEPT WHERE A RADIUS HAS BEEN SPECIFICALLY NOMINATED. CURVED PIPES ARE TO BE APPROVED BY COUNCIL AND IN ACCORDANCE WITH THE MANUFACTURERS SPECIFICATIONS.
- WATER TAPPINGS TO BE LOCATED IN CENTRE OF ALLOTMENTS UNLESS OTHERWISE SHOWN.
- TELSTRA IS TO BE NOTIFIED 7 DAYS PRIOR TO PLACEMENT OF CONCRETE WORKS.
- PAVEMENT DEPTHS MAY BE MODIFIED AS DIRECTED BY THE SUPERINTENDENT.

- PAVEMENT TO BE BOXED OUT TO MINIMUM DEPTH DENOTED, INSPECTED AND IF SUBGRADE IS IN QUESTION, FURTHER TESTING CARRIED OUT TO DETERMINE FINAL PAVEMENT DEPTH.
- WHERE PAVEMENT IS CONSTRUCTED ON FILLING, FILL MATERIAL IS TO BE APPROVED BY THE SUPERINTENDENT AND COUNCIL. FILLING TO BE CONSTRUCTED IN LAYERS 150mm THICK WITH COMPACTION ACHIEVING 95% AUSTRALIAN STANDARD DENSITY.
- WHEN PAVEMENT EXCAVATION IS IN ROCK, ALL LOOSE MATERIAL (INCLUDING ROCKS AND CLAY) MUST BE REMOVED. THE SUB-GRADE MUST THEN BE REGULATED WITH COUNCIL APPROVED MATERIAL.
- LINEMARKING AND SIGNAGE TO BE INSTALLED IN ACCORDANCE WITH AS 1742 SERIES UNLESS NOTED OTHERWISE. STREET SIGNS ARE TO BE INSTALLED IN ACCORDANCE WITH COUNCIL STANDARDS.
- ALL TEMPORARY WARNING SIGNS USED DURING CONSTRUCTION SHALL BE SUPPLIED AND MAINTAINED IN ACCORDANCE WITH AS 1742-3.
- TACTILE GROUND SURFACE INDICATORS ARE TO BE INSTALLED IN ACCORDANCE WITH THE DISABILITY DISCRIMINATION ACT AND RELEVANT COUNCIL STANDARD DRAWINGS.
- CONTRACTOR TO PROVIDE AN ENVIRONMENTAL MANAGEMENT PLAN INCLUDING SILT AND SEDIMENT RUNOFF PROTECTION ETC. PRIOR TO THE COMMENCEMENT OF WORKS.
- ALL TREES AND SHRUBS ARE TO BE RETAINED UNLESS OTHERWISE SHOWN. IF ROAD AND DRAINAGE CONSTRUCTION NECESSITATES THEIR REMOVAL, WRITTEN PERMISSION MUST BE OBTAINED FROM THE SUPERINTENDENT.
- TREES NOT SPECIFIED FOR REMOVAL ARE TO BE PROTECTED WITH APPROPRIATE EXCLUSION FENCING PRIOR TO COMMENCEMENT OF ANY WORKS.

DRAWING SCHEDULE

REFERENCE	DESCRIPTION	REVISION
CR100	FACE SHEET	6
CR200	ROAD & DRAINAGE DETAIL PLAN	5
CR201	SERVICES PLAN	4
CR202	TARNEIT RD LINE MARKING & OUTFALL ARRANGEMENTS	2
CR300	ROAD LONGITUDINAL SECTIONS (SHEET 1 OF 5)	2
CR301	ROAD LONGITUDINAL SECTIONS (SHEET 2 OF 5)	1
CR302	ROAD LONGITUDINAL SECTIONS (SHEET 3 OF 5)	1
CR303	ROAD LONGITUDINAL SECTIONS (SHEET 4 OF 5)	1
CR304	ROAD LONGITUDINAL SECTIONS (SHEET 5 OF 5)	1
CR400	ROAD CROSS SECTIONS (SHEET 1 OF 10)	1
CR401	ROAD CROSS SECTIONS (SHEET 2 OF 10)	1
CR402	ROAD CROSS SECTIONS (SHEET 3 OF 10)	1
CR403	ROAD CROSS SECTIONS (SHEET 4 OF 10)	1
CR404	ROAD CROSS SECTIONS (SHEET 5 OF 10)	1
CR405	ROAD CROSS SECTIONS (SHEET 6 OF 10)	1
CR406	ROAD CROSS SECTIONS (SHEET 7 OF 10)	2
CR407	ROAD CROSS SECTIONS (SHEET 8 OF 10)	1
CR408	ROAD CROSS SECTIONS (SHEET 9 OF 10)	1
CR409	ROAD CROSS SECTIONS (SHEET 10 OF 10)	OMMITTED
CR410	CROSS SECTION - UTILITIES CORRIDOR	1
CR500	INTERSECTION DETAILS (SHEET 1 OF 6)	2
CR501	INTERSECTION DETAILS (SHEET 2 OF 6)	2
CR502	INTERSECTION DETAILS (SHEET 3 OF 6)	2
CR503	INTERSECTION DETAILS (SHEET 4 OF 6)	2
CR504	INTERSECTION DETAILS (SHEET 5 OF 6)	3
CR505	INTERSECTION DETAILS (SHEET 6 OF 6)	3
CR600	DRAINAGE LONG SECTIONS (SHEET 1 OF 4)	1
CR601	DRAINAGE LONG SECTIONS (SHEET 2 OF 4)	2
CR602	DRAINAGE LONG SECTIONS (SHEET 3 OF 4)	1
CR603	DRAINAGE LONG SECTIONS (SHEET 4 OF 4)	3
CR604	EAST-WEST TEMPORARY OUTFALL CHANNEL LONGITUDINAL SECTION	1
CR700	STANDARD DETAILS	1
CR800	SIGNAGE AND LINEMARKING	5
CR900	DRAINAGE PIT DETAILS	1

NEWHAVEN STAGE 1 PEET 1895 PTY LTD



LOCALITY PLAN

SCALE: NOT TO SCALE
MELWAYS: 228 K11

LEGEND

DESCRIPTION	EXISTING	PROPOSED
WATER MAIN, VALVE AND HYDRANT	DW-X-Ø	DW
WATER RECYCLED	NDW	NDW
UNDERGROUND ELECTRICITY	E	E
OVERHEAD ELECTRICITY & POLE	OE	OE
TELSTRA & SERVICE PIT	T	T
OPTIC FIBRE	OF	OF
OVERHEAD TELSTRA	OT	OT
GAS MAIN	G	G
BRANCH SEWER & MANHOLE	S	S
SEWER & MANHOLE	S	S
SEWER RISING MAIN	SRM	SRM
CENTRAL INVERT	>	>
COUNCIL STORMWATER DRAIN & PIT	[Symbol]	[Symbol]
STORMWATER DRAINAGE PROPERTY INLETS	[Symbol]	[Symbol]
COUNCIL STORMWATER PITS	[Symbol]	[Symbol]
HOUSE DRAIN	[Symbol]	[Symbol]
AG DRAIN AND FLUSHER	AG	AG
MWC STORMWATER DRAIN & PIT	[Symbol]	[Symbol]
MWC STORMWATER PITS	[Symbol]	[Symbol]
STORMWATER DRAINAGE PIT NUMBER	1	1
GAS & WATER CONDUITS	[Symbol]	[Symbol]
CONCRETE VEHICLE CROSSING/INDUSTRIAL CROSSING	[Symbol]	[Symbol]
PAVEMENT SAWCUT LINE	[Symbol]	[Symbol]
RIDGE / CHANGE OF GRADE LINE	[Symbol]	[Symbol]
SURFACE CONTOUR MINOR	-168.90	168.90
SURFACE CONTOUR MAJOR	-169.00	169.00
SURFACE LEVEL	E123.45	F124.68
BATTER LEVEL (TOP / TOE)	T124.80	T124.80
EARTHWORKS GRADE	[Symbol]	1 in 150
SIGN AND POST	[Symbol]	[Symbol]
LIGHT & POLE (BY OTHERS)	[Symbol]	[Symbol]
STREET SIGN	[Symbol]	[Symbol]
PERMANENT SURVEY MARK	[Symbol]	[Symbol]
TEMPORARY BENCH MARK	[Symbol]	[Symbol]
BOLLARD	[Symbol]	[Symbol]
ROAD CHAINAGES	CH116.57 (L/R)TP CH116.57	CH116.57 (L/R)TP CH116.57
LOT CHAINAGE	CH20.06	CH20.06
SETOUT POINT	[Symbol]	[Symbol]
LIMIT OF WORKS	[Symbol]	[Symbol]
BATTER	[Symbol]	[Symbol]
EXCAVATION GREATER THAN 0.20m	[Symbol]	[Symbol]
FILLING GREATER THAN 0.20m	[Symbol]	[Symbol]
FILL EXTENTS	[Symbol]	[Symbol]
ROCK BEACHING	[Symbol]	[Symbol]
PARKING BAY/PAVED AREA	[Symbol]	[Symbol]
RETAINING WALL - TIMBER	[Symbol]	[Symbol]
RETAINING WALL - CONCRETE	[Symbol]	[Symbol]
RETAINING WALL - ROCK/STONE	[Symbol]	[Symbol]
FENCE - TREE PROTECTION	[Symbol]	[Symbol]
FENCE - VEHICLE EXCLUSION	[Symbol]	[Symbol]
FENCES	[Symbol]	[Symbol]
GUARD RAIL	[Symbol]	[Symbol]
TREE (& SURVEYED CANOPY) TO BE RETAINED	[Symbol]	[Symbol]
TREE TO BE REMOVED	[Symbol]	[Symbol]
VEGETATION LINE	[Symbol]	[Symbol]
ROADSIDE MARKER POSTS	[Symbol]	[Symbol]

WARNING
BEWARE OF UNDERGROUND/OVERHEAD SERVICES
THE LOCATION OF SERVICES ARE APPROXIMATE ONLY AND THEIR EXACT POSITION SHOULD BE PROVEN ON SITE. NO GUARANTEE IS GIVEN THAT ALL EXISTING SERVICES ARE SHOWN. SPECIAL CONSIDERATION SHOULD BE GIVEN TO CONSTRUCTION PROCEDURES UNDER OVERHEAD ELECTRICITY TRANSMISSION LINES.

DIAL BEFORE YOU DIG
www.1100.com.au

file name: 303216CR100.dwg, layout name: CR100, plotted by: Patsy Kemp, file location: G:\303216\303216\CR100\plot.dwg, date: 17/04/2018, 3:28 PM, Sheet 1 of 34, Sheets

Rev	Amendments	Approved	Date
6	AS CONSTRUCTED	JS	17-04-18
5	LOT 149 CROSSOVER EXTENDED & CONDUIT RELOCATED	JS	30-01-18
4	LOT 154 CROSSOVER RELOCATED & ASSOCIATED CHANGES	JS	26-09-17
3	TARNEIT ROAD MEDIAN AND PIT 400 LID LEVEL AMENDED	JS	11-08-17
2	DRAWING SCHEDULE & SHEETS 02, 23-26 & 33 AMENDED	JS	27-07-17
1	TBMS ADDED & GAS OFFSET ON VOYAGER WEST OF ROUNDABOUT AMENDED	JS	07-04-17
0	ISSUED FOR CONSTRUCTION	JS	30-03-17

Scale

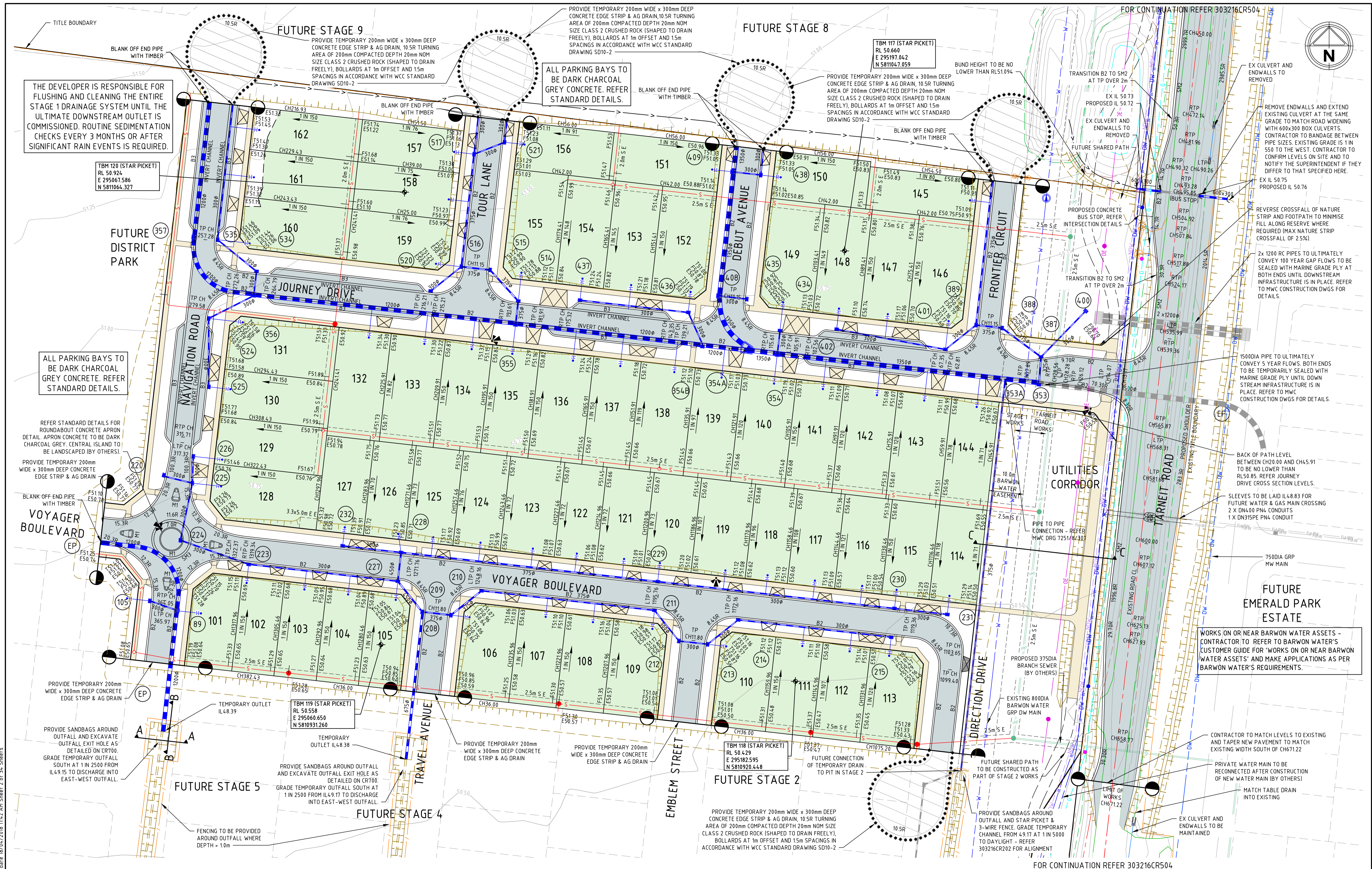
AS/NZS 1546:2000	AS/NZS 1546:2000	AS/NZS 1546:2000
[Symbol]	[Symbol]	[Symbol]

© Spiire Australia Pty Ltd All Rights Reserved
This document is produced by Spiire Australia Pty Ltd solely for the benefit of and use by the client in accordance with the terms of the retainer. Spiire Australia Pty Ltd does not and shall not assume any responsibility or liability whatsoever to any third party arising out of any use or reliance by third party on the content of this document.

spiire
469 La Trobe Street PO Box 16084 Melbourne
Victoria 8007 Australia T 61 3 9993 7888
spiire.com.au ABN 55 050 029 635

PEET
Designed H. SPURLING
Authorised J. SPENCER
Checked A. CHARALAMBOUS
Date 30-03-17

**NEWHAVEN
STAGE 1
ROAD & DRAINAGE
FACE SHEET**
WYNDHAM CITY COUNCIL
PEET 1895 PTY LTD
AS CONSTRUCTED Drg No 303216CR100 Rev 6



THE DEVELOPER IS RESPONSIBLE FOR FLUSHING AND CLEANING THE ENTIRE STAGE 1 DRAINAGE SYSTEM UNTIL THE ULTIMATE DOWNSTREAM OUTLET IS COMMISSIONED. ROUTINE SEDIMENTATION CHECKS EVERY 3 MONTHS OR AFTER SIGNIFICANT RAIN EVENTS IS REQUIRED.

ALL PARKING BAYS TO BE DARK CHARCOAL GREY CONCRETE. REFER STANDARD DETAILS.

ALL PARKING BAYS TO BE DARK CHARCOAL GREY CONCRETE. REFER STANDARD DETAILS.

REFER STANDARD DETAILS FOR ROUNDABOUT CONCRETE APRON DETAIL. APRON CONCRETE TO BE DARK CHARCOAL GREY. CENTRAL ISLAND TO BE LANDSCAPED (BY OTHERS).

PROVIDE TEMPORARY 200mm WIDE x 300mm DEEP CONCRETE EDGE STRIP & AG DRAIN

BLANK OFF END PIPE WITH TIMBER

VOYAGER BOULEVARD

PROVIDE TEMPORARY 200mm WIDE x 300mm DEEP CONCRETE EDGE STRIP & AG DRAIN

PROVIDE SANDBAGS AROUND OUTFALL AND EXCAVATE OUTFALL EXIT HOLE AS DETAILED ON CR700. GRADE TEMPORARY OUTFALL SOUTH AT 1 IN 2500 FROM IL4.9.15 TO DISCHARGE INTO EAST-WEST OUTFALL.

PROVIDE TEMPORARY 200mm WIDE x 300mm DEEP CONCRETE EDGE STRIP & AG DRAIN

PROVIDE SANDBAGS AROUND OUTFALL AND EXCAVATE OUTFALL EXIT HOLE AS DETAILED ON CR700. GRADE TEMPORARY OUTFALL SOUTH AT 1 IN 2500 FROM IL4.9.17 TO DISCHARGE INTO EAST-WEST OUTFALL.

PROVIDE TEMPORARY 200mm WIDE x 300mm DEEP CONCRETE EDGE STRIP & AG DRAIN

PROVIDE TEMPORARY 200mm WIDE x 300mm DEEP CONCRETE EDGE STRIP & AG DRAIN

PROVIDE TEMPORARY 200mm WIDE x 300mm DEEP CONCRETE EDGE STRIP & AG DRAIN

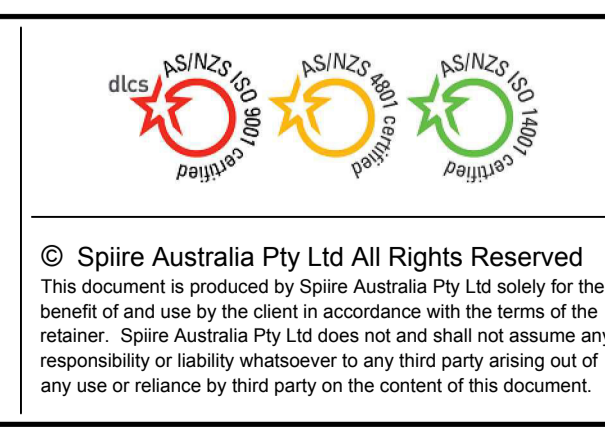
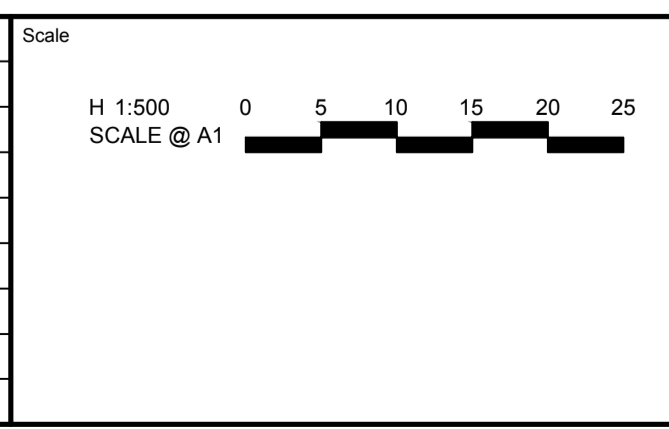
PROVIDE TEMPORARY 200mm WIDE x 300mm DEEP CONCRETE EDGE STRIP & AG DRAIN

PROVIDE TEMPORARY 200mm WIDE x 300mm DEEP CONCRETE EDGE STRIP & AG DRAIN

PROVIDE TEMPORARY 200mm WIDE x 300mm DEEP CONCRETE EDGE STRIP & AG DRAIN

file name: 303216CR200.dwg, layout name: CR200, created by: Harrison, Spurling, file location: G:\303216CR200\303216CR200.dwg, plot date: 18/04/2018 11:42 AM, Sheet 2 of 34, Sheets

Rev	Amendments	Approved	Date
5	AS CONSTRUCTED	JS	17-04-18
4	LOT 149 CROSSOVER EXTENDED	JS	30-01-18
3	LOT 154 CROSSOVER RELOCATED & ASSOCIATED CHANGES	JS	26-09-17
2	OE AND NOTES ADDED, SLEEVES AMENDED	JS	27-07-17
1	TBMS ADDED	JS	07-04-17
0	ISSUED FOR CONSTRUCTION	JS	30-03-17
G	CULVERT NOTE AMENDED, LOT LEVELS AMENDED.	JS	24-03-17



© Spiire Australia Pty Ltd All Rights Reserved
 This document is produced by Spiire Australia Pty Ltd solely for the benefit of and use by the client in accordance with the terms of the retainer. Spiire Australia Pty Ltd does not and shall not assume any responsibility or liability whatsoever to any third party arising out of any use or reliance by third party on the content of this document.

spiire
 469 La Trobe Street PO Box 16084 Melbourne
 Victoria 8007 Australia T 61 3 9993 7888
 spiire.com.au ABN 55 050 029 635

PEET

Designed
H. SPURLING

Checked
A. CHARALAMBOUS

Authorised
J. SPENCER

Date
30-03-17

NEWHAVEN STAGE 1 ROAD & DRAINAGE DETAIL PLAN
 WYNDHAM CITY COUNCIL
 PEET 1895 PTY LTD

AS CONSTRUCTED

Rev No
303216CR200

Rev
5