

WORKS AS-CONSTRUCTED

Based on the information supplied by the project surveyor "Capricorn Surveys Gladstone", the Quality Assurance documentation received from the contractor, and the regular site inspections carried out, we verify that the intent of the approved design drawings prepared by Worley Parsons has been achieved, and this drawing is an accurate representation of the works.

Project- Vantage Estate Stage 6
Project Number:- 23520-BRI-C-6

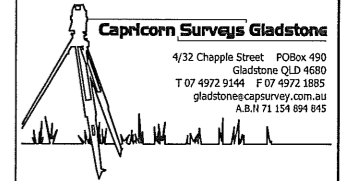
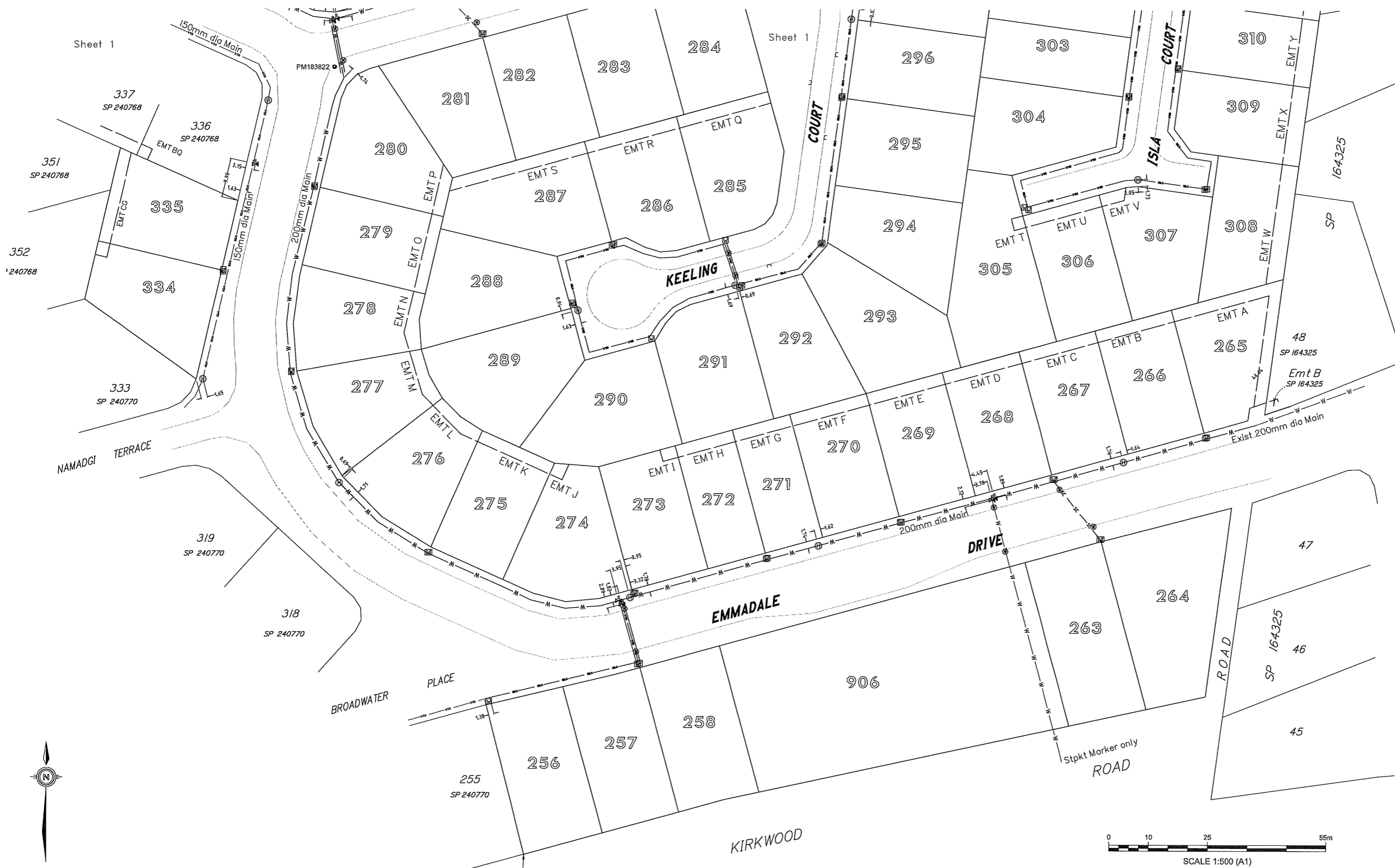
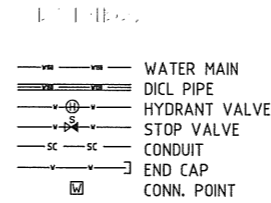
(RPEQ 10806) Date: 16/10/12
Michael Prior
On behalf of:
WOOD & GRIEVE ENGINEERS PTY LTD

GENERAL NOTES

- These plans have been prepared as an As Constructed drawing for the Gladstone Regional Council and should not be used for any other purpose.
- All surface and underground information has been located by field survey by Capricorn Surveys Gladstone and Shadforth's Civil, during construction.
- As this plan is presented in digital computer format no responsibility is accepted by Capricorn Surveys Gladstone for any alterations, amendments or additions to the plan. This note is an integral part of the plan.
- Types and classes of underground services are as per engineering design drawings by Worley Parsons Pty Ltd unless noted otherwise.
- Coordinate origin from Adopted origin coordinates MGA Zone 56
PSM177594 East 319612.40 North 7357047.42
PSM157198 East 319608.91 North 7357409.05
- AHD D from PSM95145 with adopted level of RL 57.996

WATER SUPPLY PIPE DIMENSIONS AND CLASSES

- 100, 150, 200 & 300 DIAMETER LINES- uPVC CLASS 16
- SERVICE CONDUITS POSITIONS AND ROAD CROSSINGS, HAVE BEEN SURVEYED AT THE LOCATIONS INDICATED BY THE CONTRACTOR.
- Pipes under road pavements are Class 35 DICL pipe and extend at least 0.5 metres behind the kerb into the footpath area.



PRINCIPAL

Peet No 112 Pty Ltd

PROJECT
AS CONSTRUCTED INFORMATION
VANTAGE ESTATE
STAGE 6
Sheet 2 of 2
Water Reticulation

REAL PROPERTY DESCRIPTION
Lot No: 256-258, 263-310
334, 335, 387-396,
425-432, 434, 509,
906 & 907
Plan: SP251455
Map Ref.: 9150-32114
Parish: Auckland
County: Clinton
Locality: New Auckland

REVISIONS	DATE	INITIALS
A- Original Issue	11/09/12	DES
B- Lot 436 connection added	12/10/12	DES
C- Re-issue only	12/10/12	DES

FILE REF:	3493
VERSION:	28
DATA DISK:	CX
DATE:	10-09-12
FILE REF:	3493-ASC
DATA DISK:	Server
DATE:	11-09-12

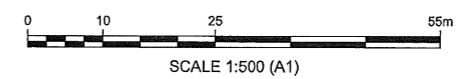
SURVEYED:	CSG
DRAWN:	D.E.S.
QUALITY CH'D:	
DATE:	11-09-12

DATUM	HORIZONTAL	MGA Zone 56
	VERTICAL	AHD

SCALE	1:500 @ A1
AUTHORISED BY	DATE

DIRECTOR	REV.
JOB NO.	

3493-WAT-C (2/2)



WORKS AS-CONSTRUCTED

Based on the information supplied by the project surveyor "Capricorn Surveys Gladstone", the Quality Assurance documentation received from the contractor, and the regular site inspections carried out, we verify that the intent of the approved design drawings prepared by Worley Parsons has been achieved, and this drawing is an accurate representation of the works.

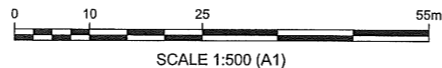
Project: Vantage Estate Stage 6
Project Number: 23520-BRI-C-6

Michael Prior
On behalf of:
WOOD & GRIEVE ENGINEERS PTY LTD

(RPEQ 10608) Date: 16/10/12

WATER SUPPLY PIPE DIMENSIONS AND CLASSES

- 100, 150, 200 & 300 DIAMETER LINES- uPVC CLASS 16
- SERVICE CONDUITS POSITIONS AND ROAD CROSSINGS, HAVE BEEN SURVEYED AT THE LOCATIONS INDICATED BY THE CONTRACTOR.
- Pipes under road pavements are Class 35 DICL pipe and extend at least 0.5 metres behind the kerb into the footpath area.

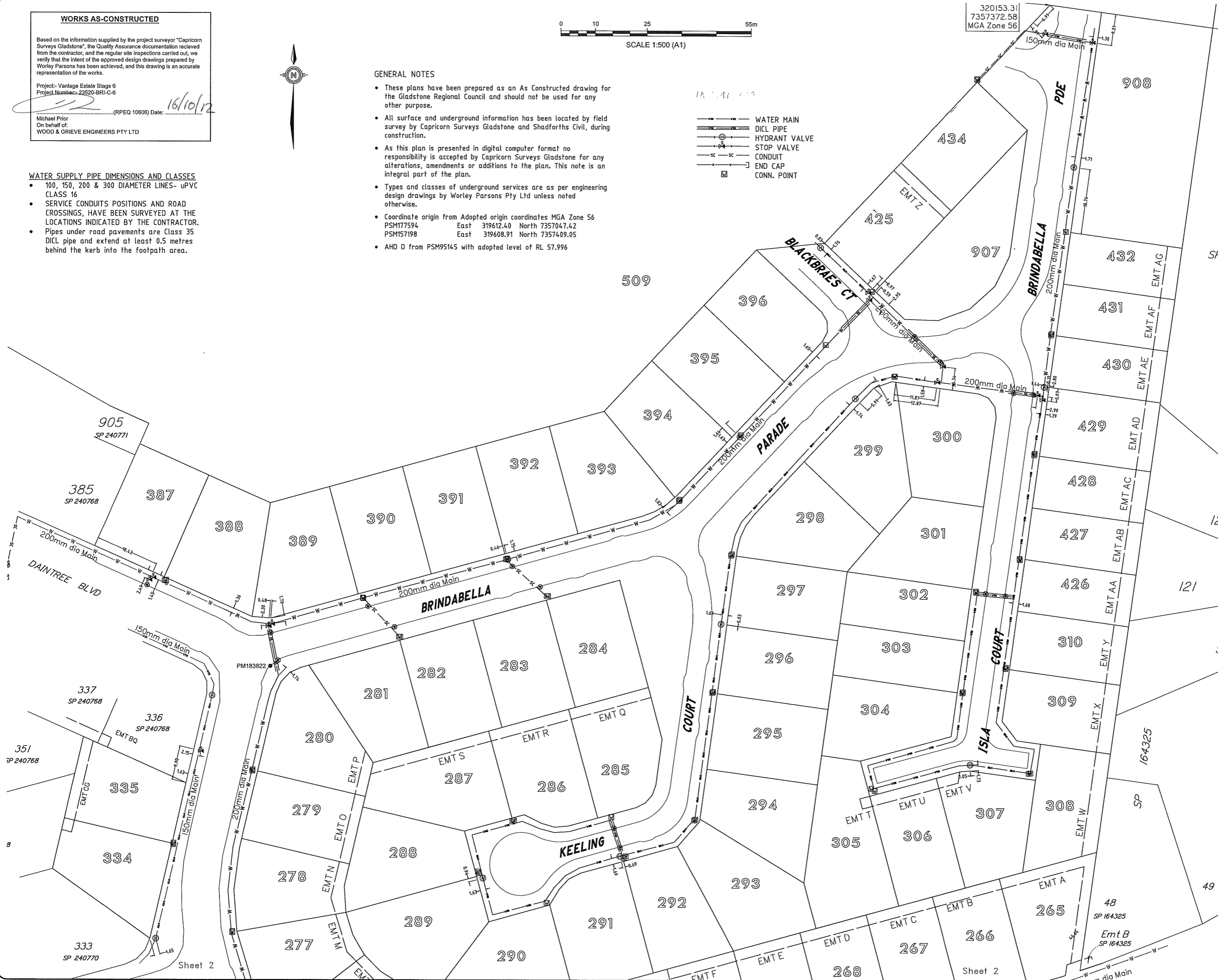


GENERAL NOTES

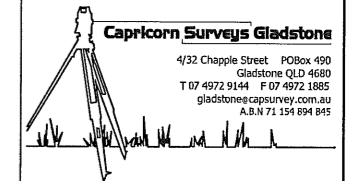
- These plans have been prepared as an As Constructed drawing for the Gladstone Regional Council and should not be used for any other purpose.
- All surface and underground information has been located by field survey by Capricorn Surveys Gladstone and Shadforths Civil, during construction.
- As this plan is presented in digital computer format no responsibility is accepted by Capricorn Surveys Gladstone for any alterations, amendments or additions to the plan. This note is an integral part of the plan.
- Types and classes of underground services are as per engineering design drawings by Worley Parsons Pty Ltd unless noted otherwise.
- Coordinate origin from Adopted origin coordinates MGA Zone 56
PSM177594 East 319612.40 North 735704.742
PSM157198 East 319608.91 North 7357409.05
- AHD D from PSM95145 with adopted level of RL 57.996

LEGEND

- WATER MAIN
- DICL PIPE
- ⊕ HYDRANT VALVE
- ⊖ STOP VALVE
- SC — CONDUIT
- END CAP
- CONN. POINT



320153.31
7357372.58
MGA Zone 56



PRINCIPAL
Peet No 112 Pty Ltd

PROJECT
AS CONSTRUCTED INFORMATION
VANTAGE ESTATE
STAGE 6
Sheet 1 of 2
Water Retiulation

REAL PROPERTY DESCRIPTION
Lot No: 256-258, 263-310, 334, 335, 387-396, 425-432, 434, 509, 906 & 907
Plan: SP251455
Map Ref.: 9150-32114
Parish: Auckland
County: Clinton
Locality: New Auckland

REVISIONS	DATE	INITIALS
A- Original Issue	11/09/12	DES
B- Lot 434 connection added	12/10/12	DES
C- Re-issue only	12/10/12	DES

FILE REF:	3493
VERSION:	28
DATA DISK:	CX
DATE:	10-09-12
FILE REF:	3493-ASC
DATA DISK:	Server
DATE:	11-09-12

SURVEYED: CSG
DRAWN: D.E.S.
QUALITY CH'D:
DATE: 11-09-12

DATUM
HORIZONTAL
MGA Zone 56
VERTICAL
AHD

SCALE
1:500 @ A1

AUTHORISED BY _____ **DATE** _____

DIRECTOR _____ **REV.** _____
JOB NO. _____

3493-WAT-C (1/2)

Sheet 2

Sheet 2