

**GENERAL NOTES**

- These plans have been prepared as an As Constructed drawing for the Gladstone Regional Council and should not be used for any other purpose.
- All surface and underground information has been located by field survey by Capricorn Surveys Gladstone and Shadforth's Civil, during construction.
- As this plan is presented in digital computer format no responsibility is accepted by Capricorn Surveys Gladstone for any alterations, amendments or additions to the plan. This note is an integral part of the plan.
- Types and classes of underground services are as per engineering design drawings by Worley Parsons Pty Ltd unless noted otherwise.
- Coordinate origin from Adopted origin coordinates MGA Zone 56  
 PSM177594 East 319612.40 North 7357047.42  
 PSM157198 East 319608.91 North 7357409.05
- AHD D from PSM95145 with adopted level of RL 57.996

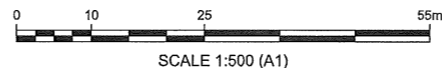
**WORKS AS-CONSTRUCTED**

Based on the information supplied by the project surveyor "Capricorn Surveys Gladstone", the Quality Assurance documentation received from the contractor, and the regular site inspections carried out, we verify that the intent of the approved design drawings prepared by Worley Parsons has been achieved, and this drawing is an accurate representation of the works.

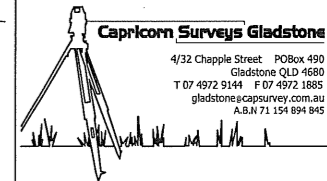
Project- Vantage Estate Stage 6  
 Project Number- 23520-BRI-C-6

Michael Prior  
 On behalf of:  
 WOOD & GRIEVE ENGINEERS PTY LTD

(RPEQ 10606) Date: 16/10/12



320153.31  
 7357372.58  
 MGA Zone 56



PRINCIPAL

**Peet No 112  
 Pty Ltd**

PROJECT  
**AS CONSTRUCTED  
 INFORMATION**  
 VANTAGE ESTATE  
 STAGE 6  
 Sheet 1 of 2  
**As Built Surface**

**REAL PROPERTY DESCRIPTION**

Lot No: 256-258, 263-310  
 334, 335, 387-396,  
 425-432, 434, 509,  
 906 & 907

Plan: SP251455

Map Ref.: 9150-32114

Parish: Auckland

County: Clinton

Locality: New Auckland

**REVISIONS**

REVISIONS	DATE	INITIALS
B- Original Issue	09/10/12	DES
C- Amended Lot 434	12/10/12	DES

FILE REF: 3493

VERSION: 28

DATA DISK: GX

DATE: 6-10-12

FILE REF: 3493-ASC

DATA DISK: Server

DATE: 09-10-12

SURVEYED: CSG

DRAWN: D.E.S.

QUALITY CH'D:

DATE: 09-10-12

HORIZONTAL

MGA Zone 56

VERTICAL

AHD

SCALE

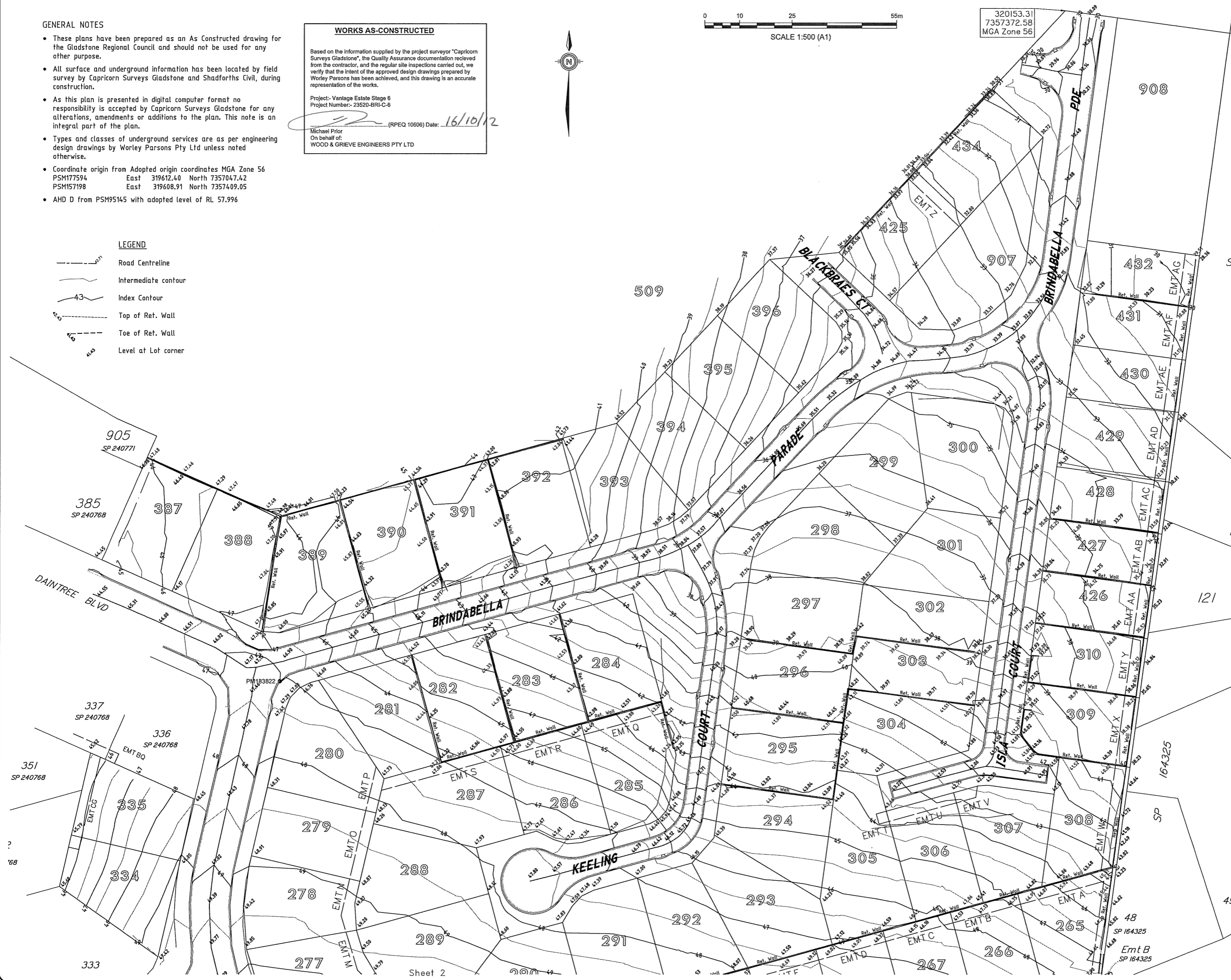
1:500@A1

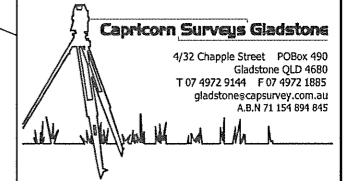
AUTHORISED BY DATE

DIRECTOR

JOB NO. REV.

3493-CON-C (1/2)





PRINCIPAL  
**Peet No 112 Pty Ltd**

PROJECT  
**AS CONSTRUCTED INFORMATION**  
 VANTAGE ESTATE  
 STAGE 6  
 Sheet 2 of 2  
**As Built Surface**

REAL PROPERTY DESCRIPTION  
 Lot No: 256-258, 263-310, 334, 335, 387-396, 425-432, 434, 509, 906 & 907  
 Plan: SP251455  
 Map Ref.: 9150-32114  
 Parish: Auckland  
 County: Clinton  
 Locality: New Auckland

REVISIONS	DATE	INITIALS
B- Original Issue	09/10/12	DES
C- Amended Lot 934	12/10/12	DES

FILE REF:	3493
VERSION:	28
DATA DISK:	GX
DATE:	6-10-12
FILE REF:	3493-ASC
DATA DISK:	Server
DATE:	09-10-12

SURVEYED: CSG  
 DRAWN: D.E.S.  
 QUALITY CH'D:  
 DATE: 09-10-12

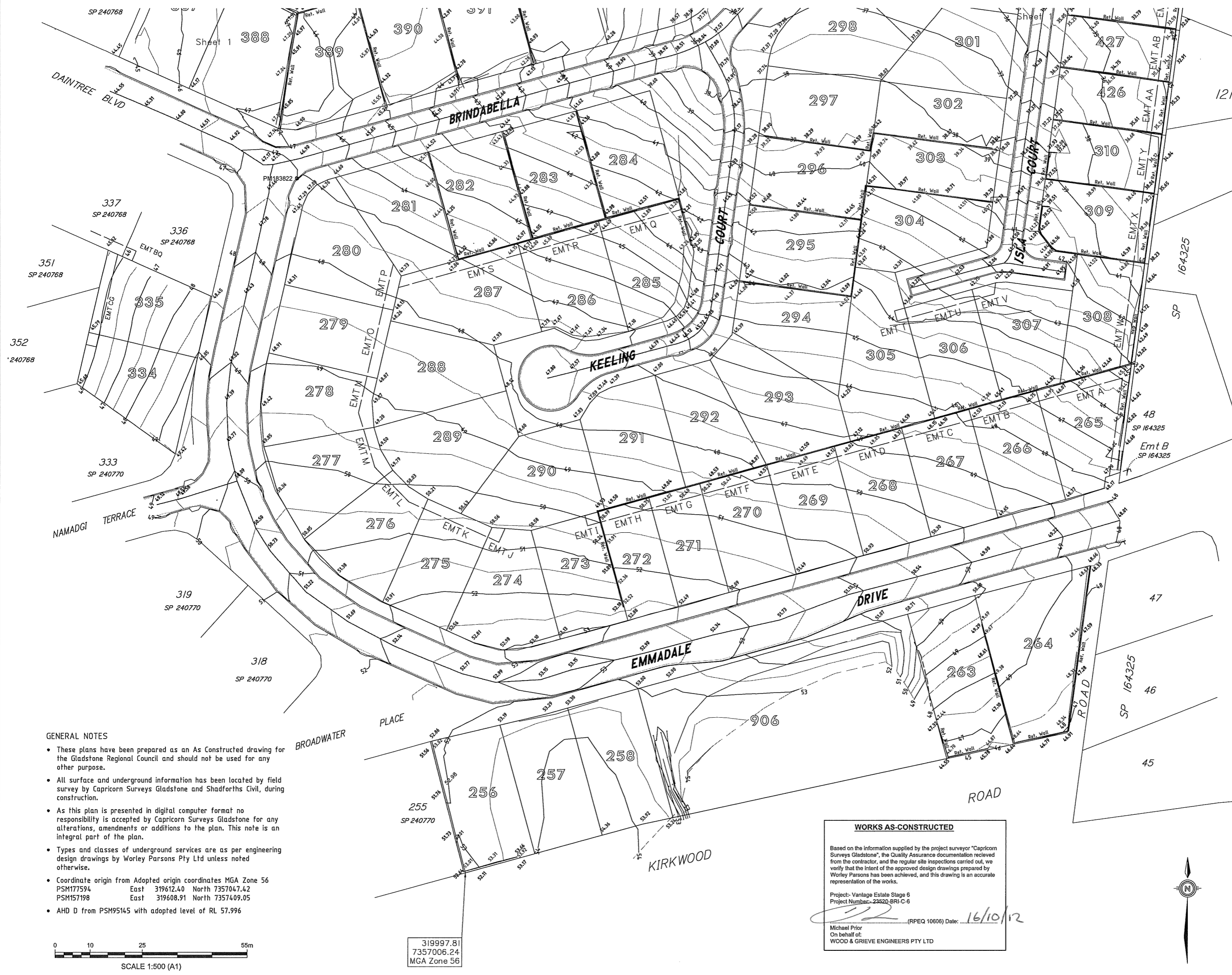
HORIZONTAL  
 MGA Zone 56  
 VERTICAL  
 AHD

SCALE  
**1:500@A1**

AUTHORISED BY \_\_\_\_\_ DATE \_\_\_\_\_

DIRECTOR  
 JOB NO. \_\_\_\_\_ REV. \_\_\_\_\_

**3493-CON-C (2/2)**



- GENERAL NOTES
- These plans have been prepared as an As Constructed drawing for the Gladstone Regional Council and should not be used for any other purpose.
  - All surface and underground information has been located by field survey by Capricorn Surveys Gladstone and Shadforth's Civil, during construction.
  - As this plan is presented in digital computer format no responsibility is accepted by Capricorn Surveys Gladstone for any alterations, amendments or additions to the plan. This note is an integral part of the plan.
  - Types and classes of underground services are as per engineering design drawings by Worley Parsons Pty Ltd unless noted otherwise.
  - Coordinate origin from Adopted origin coordinates MGA Zone 56  
 PSM177594 East 319612.40 North 7357047.42  
 PSM157198 East 319608.91 North 7357409.05
  - AHD D from PSM95145 with adopted level of RL 57.996

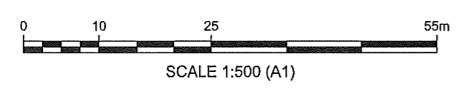
**WORKS AS-CONSTRUCTED**

Based on the information supplied by the project surveyor "Capricorn Surveys Gladstone", the Quality Assurance documentation received from the contractor, and the regular site inspections carried out, we verify that the intent of the approved design drawings prepared by Worley Parsons has been achieved, and this drawing is an accurate representation of the works.

Project: Vantage Estate Stage 6  
 Project Number: 23520-BRI-C-6

\_\_\_\_\_  
 (RPEQ 10606) Date: 16/10/12

Michael Prior  
 On behalf of:  
 WOOD & GRIEVE ENGINEERS PTY LTD



319997.81  
 7357006.24  
 MGA Zone 56