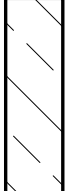
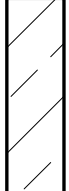
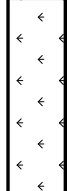


BUILDING AND CONSERVATION ENVELOPES

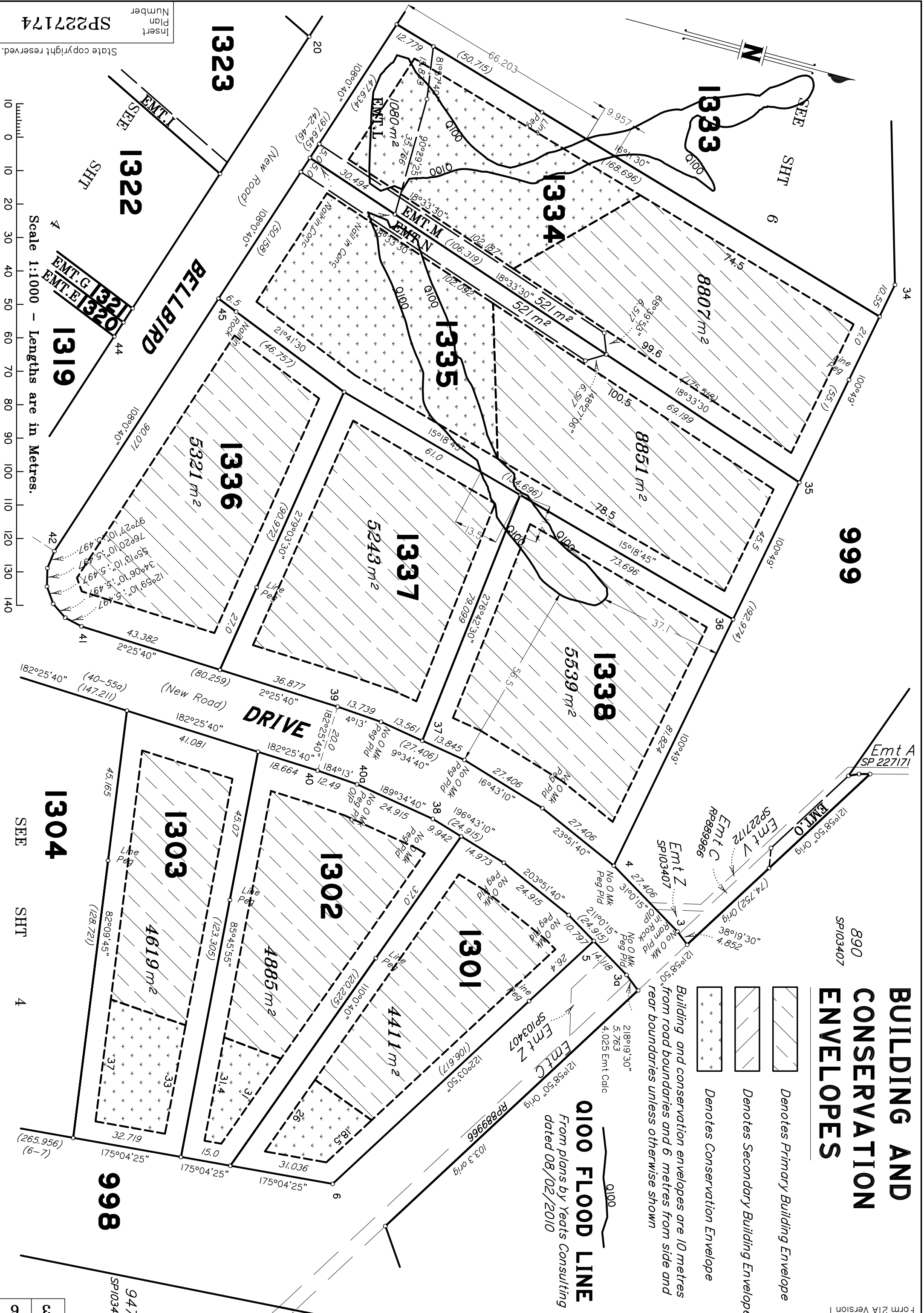
-  Denotes Primary Building Envelope
-  Denotes Secondary Building Envelope
-  Denotes Conservation Envelope

Building and conservation envelopes are 10 metres from road boundaries and 6 metres from side and rear boundaries unless otherwise shown

Q100 FLOOD LINE

From plans by Yeats Consulting dated 08/02/2010

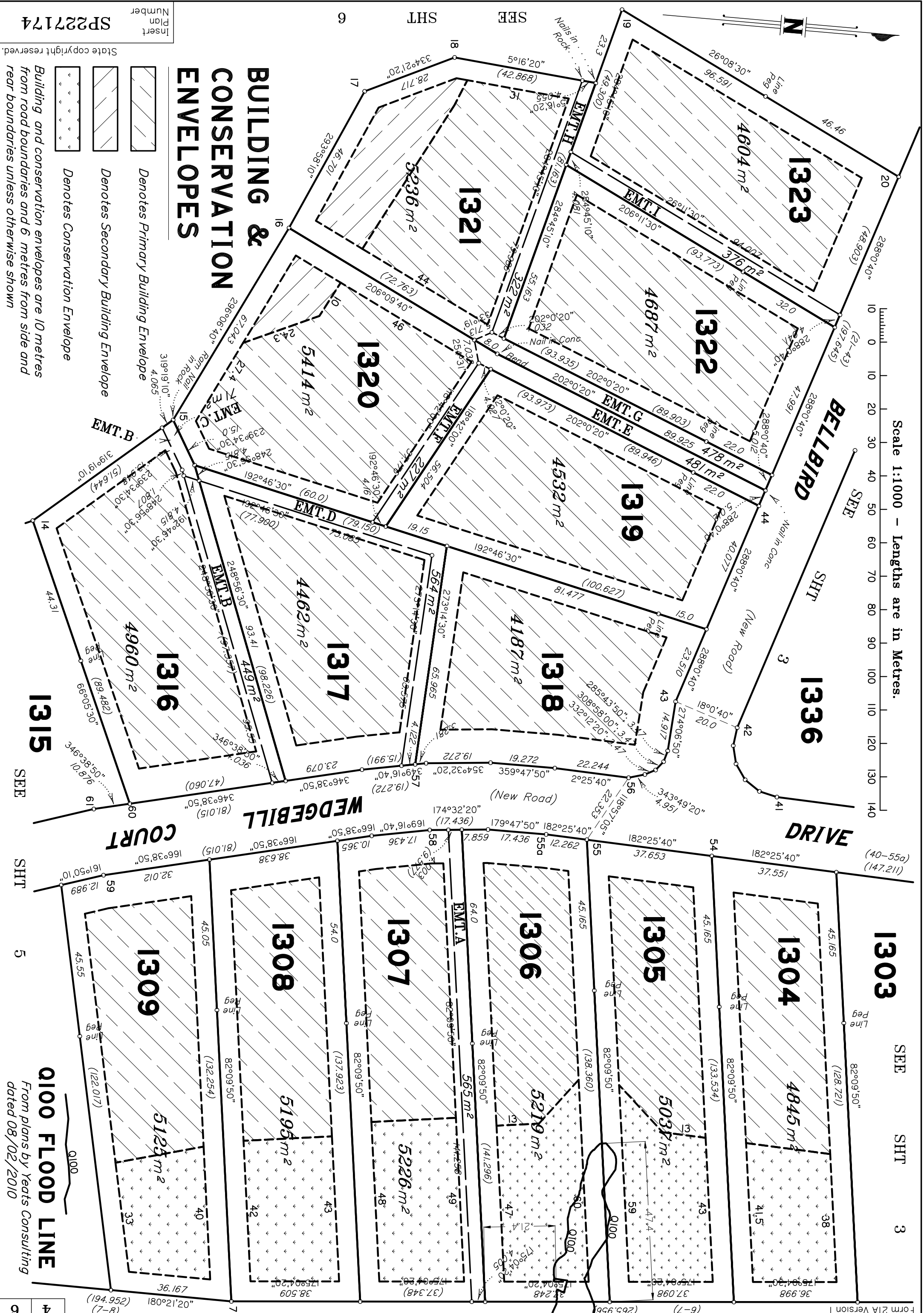
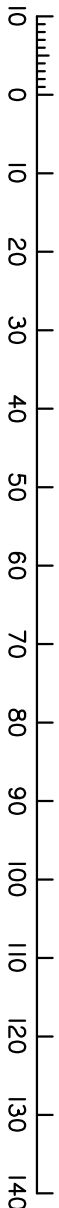
ADDITIONAL SHEET



SP227174
Insert
Plan
Number
State copyright reserved.

Scale 1:1000 - Lengths are in Metres.

Scale 1:1000 - Lengths are in Metres.



SP227174
Insert
Plan
Number

State copyright reserved.

- Denotes Primary Building Envelope
 - Denotes Secondary Building Envelope
 - Denotes Conservation Envelope
- Building and conservation envelopes are 10 metres from road boundaries and 6 metres from side and rear boundaries unless otherwise shown

BUILDING & CONSERVATION ENVELOPES

Q100 FLOOD LINE

From plans by Yeats Consulting dated 08/02/2010

REFERENCE MARKS

STN	TO	ORIGIN	BEARING	DIST
1	ODH & W in Kerb	5b/SPI03407	142°17'15"	5.742
3	OIP	9/SP227172	125°59'30"	25.175
3	DH & W in kerb		126°30'50"	5.82
3a	DH & W in kerb		303°19'	5.849
4	I Pin		272°36'	12.583
6	I Pin		85°46'	39.207
7	I Pin		82°56'30"	33.637
8	I Pin		128°44'10"	9.701
9	I Pin		175°28'40"	2.619
10	I Pin		221°27'40"	1.78
11	Ram Nail in Rock		124°06'55"	30.22
11	I Pin		226°45'	2.704
14	I Pin		246°56'20"	3.335
15	I Pin		5°0'10"	11.412
16	I Pin		277°14'30"	23.098
18	I Pin		163°47'	1.578
21	DH & W in kerb		22°11'20"	5.753
22	I Pin		90°28'30"	10.634
23	I Pin		129°06'10"	25.463
24	Ram Nail in Rock		122°09'30"	9.43
25	DH & W in kerb		316°16'	5.975
26	DH & W in kerb		343°29'	8.064
26a	OIP Gone	24/SPI03403	315°01'55"	1.0
27	OIP	25/SPI03403	135°01'55"	1.0
29	OIP	23/SPI03403	315°14'	1.0
30	I Pin		29°14'40"	7.771
31	I Pin		255°30'15"	14.754

REFERENCE MARKS

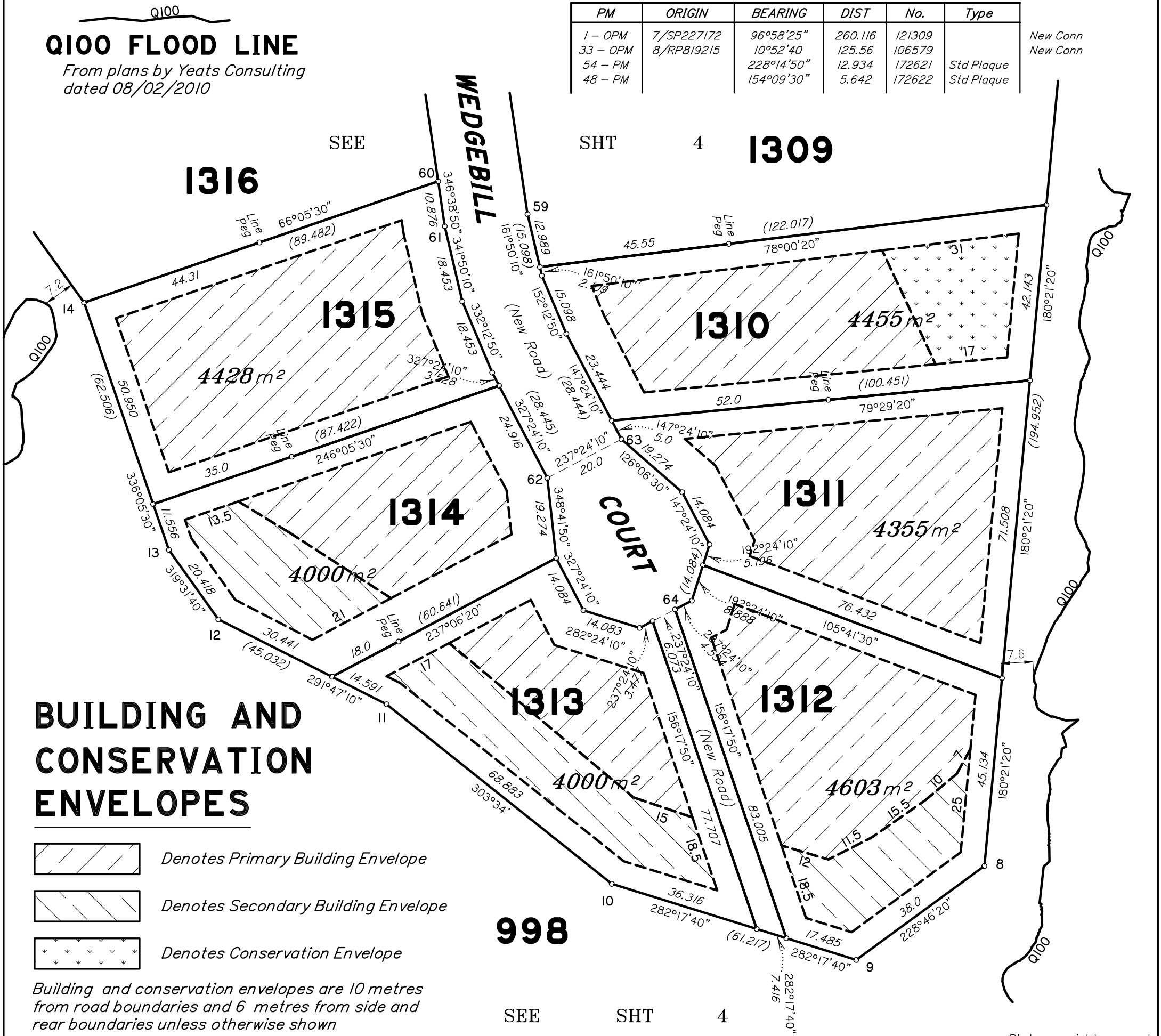
STN	TO	ORIGIN	BEARING	DIST
32	I Pin		321°18'20"	1.551
33	I Pin		9°01'10"	20.71
34	I Pin		287°07'20"	16.841
35	I Pin		335°34'	2.878
36	I Pin		6°15'30"	0.789
37	DH & W in kerb		98°02'30"	5.345
38	DH & W in Kerb		216°12'40"	13.702
40a	OIP (now gone)	43a/SPI03403	176°14'50"	39.831
41	DH & W in Kerb		189°01'40"	14.041
44	DH & W in kerb		86°08'20"	15.414
45	DH & W in kerb		116°04'25"	41.159
46	DH & W in kerb		196°26'50"	5.707
47	OIP	41a/SPI03403	38°45'30"	10.979
49	DH & W in kerb		355°23'50"	5.793
50	DH & W in kerb		330°06'	5.953
51	OIP	41b/SPI03403	345°52'20"	10.869
52	DH & W in kerb		148°31'	5.547
53	DH & W in kerb		129°04'	5.38
56	DH & W in kerb		2°04'	13.786
57	DH & W in kerb		95°48'50"	6.594
58	DH & W in kerb		224°29'20"	8.135
59	DH & W in kerb		314°51'30"	12.329
60	DH & W in kerb		79°32'10"	6.514
61	I Pin		248°30'20"	7.385
62	DH & W in kerb		107°04'30"	9.135
63	DH & W in kerb		189°37'30"	8.86
64	DH & W in kerb		331°49'20"	8.189



PERMANENT MARKS

PM	ORIGIN	BEARING	DIST	No.	Type
1 - OPM	7/SP227172	96°58'25"	260.116	121309	
33 - OPM	8/RP819215	10°52'40"	125.56	106579	
54 - PM		228°14'50"	12.934	172621	Std Plaque
48 - PM		154°09'30"	5.642	172622	Std Plaque

Q100 FLOOD LINE
From plans by Yeats Consulting
dated 08/02/2010

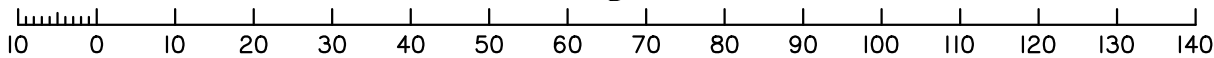


BUILDING AND CONSERVATION ENVELOPES

- Denotes Primary Building Envelope
- Denotes Secondary Building Envelope
- Denotes Conservation Envelope

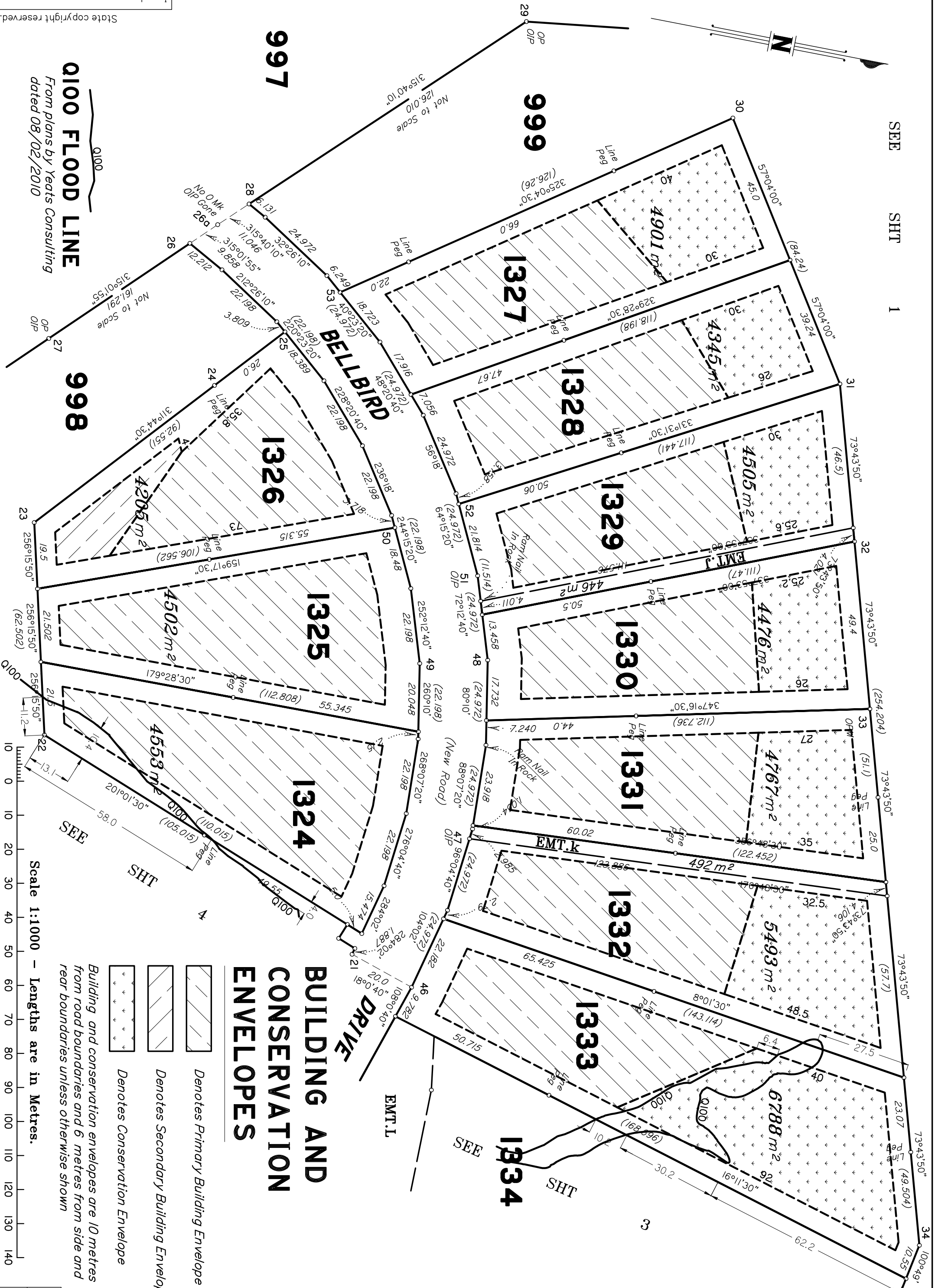
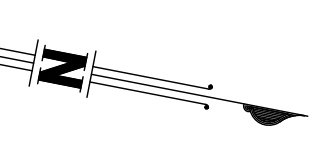
Building and conservation envelopes are 10 metres from road boundaries and 6 metres from side and rear boundaries unless otherwise shown

Scale 1:1000 - Lengths are in Metres.



State copyright reserved.

Insert Plan Number **SP227174**



Q100 FLOOD LINE
 From plans by Yeats Consulting
 dated 08/02/2010

Insert
 Plan
 Number
 SP227174

State copyright reserved.

BUILDING AND CONSERVATION ENVELOPES

- Denotes Primary Building Envelope
- Denotes Secondary Building Envelope
- Denotes Conservation Envelope

Building and conservation envelopes are 10 metres from road boundaries and 6 metres from side and rear boundaries unless otherwise shown

Scale 1:1000 – Lengths are in Metres.