

LEGEND

Final surface contours based on A.H.D datum at an interval of 0.5m, shown as: —24.0—

Natural surface contours in undisturbed areas at an interval of 1.0m shown: —24.0—

Where applicable, areas to be filled from natural surface are shown as: [shaded area]

Depth of Fill + (24.0)

Easement for Drainage EMT

Earthworks Batter [batter symbol]

Drainage Line [line symbol]

Drainage Pit [pit symbol]

Drainage Gully Pit [gully symbol]

Drainage MH [MH symbol]

Water Line [line symbol]

Water Conduit [conduit symbol]

Water Service Point of Entry [entry symbol]

Water Stop Valve [valve symbol]

Fire Hydrant [hydrant symbol]

Kerb/Kerb & Channel [kerb symbol]

Road Centreline [centreline symbol]

Building Envelope in accordance with Approved Building Envelope Plan 7081 P 06 BE A (RL/44/2008/B) received 25/05/16 by Saunders Havill Group Pty Ltd

Q100 Flood Line [flood line symbol]

DISCLOSURE PLAN
FOR PROPOSED LOT 1662
SPRING MOUNTAIN
STAGE 16C

Proposed Lot 1662 is described as part of Lot 503 on SP290583 currently part of Lot 37 on S311685

Locality of NEW BEITH

*I, Kenneth William BURNETT *, certify that the details shown on this sketch plan are correct.*

[Signature] 7.4.2017
Date

* of Schlencker Surveying (Qld) Pty. Ltd.
A.C.N. 063 830 642

IMPORTANT NOTES:

This plan has been prepared for PEET Pty Ltd for the purposes of disclosure under the Land Sales Act. It is not to be used by any other person/s or corporation/s or for any other purpose/s.

All areas and dimension are subject to final survey and relevant authority approval. Ancillary information such as services, streetscaping, banks, batters, retaining walls, fencing, footpaths & building envelopes are indicative only and are subject to relevant authority approvals and construction.

Levels and Contours shown are not to be used for building design or construction. A site survey is required.

Compaction of all fill shown on this plan will be inspected & tested to Level 1 in accordance with AS 3798-2007 except as noted heron.

These notes form an integral part of this plan and no part of this plan may be reproduced in whole or in part without these notes.

AMENDMENTS

DESCRIPTION	DATE
C Fill Area Amended	8.5.17

SCHLENCKER SURVEYING (QLD)
Gold Coast ♦ Brisbane ♦ Rockhampton

Consultants in Surveying, Mapping & Development

A.B.N. 36 909 833 411
PO Box 41,
Helensvale QLD 4212.

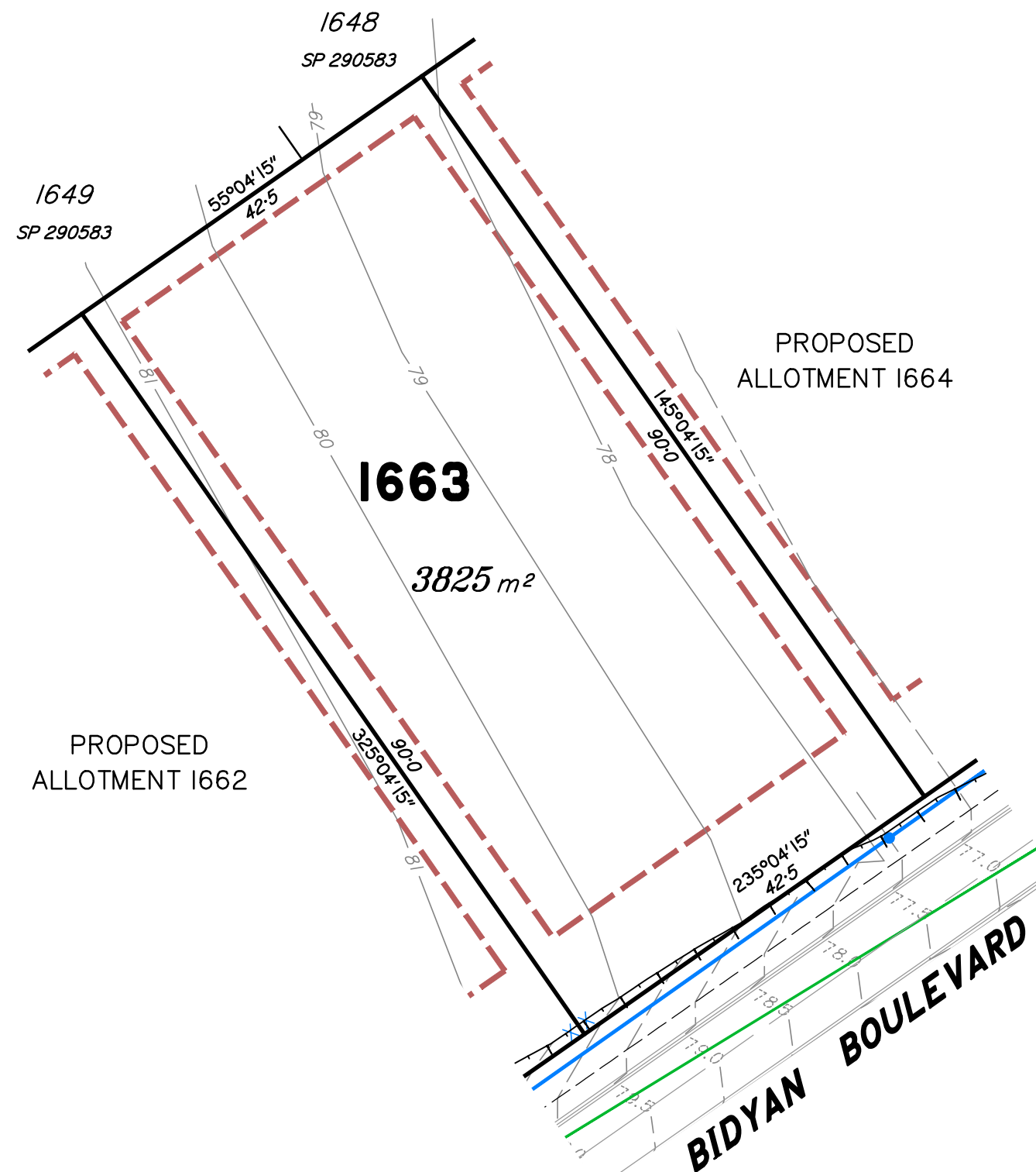
Suite 206,
Helensvale Professional Centre
3 Sir John Overall Dr.,
Helensvale QLD 4212.

Ph.: (07) 5573 6744
Fax: (07) 5573 6755
Mob.: 0413 945 959
EMAIL: mail@ssq.net.au

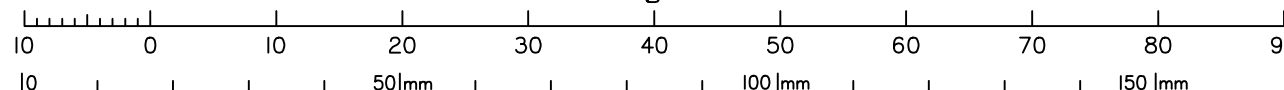
DRAWN	DATE	CHECKED	DATE
KDC	9.3.2017	BVD	7.4.2017

SCALE A3
1:500

DWG. NO.
15159-07C-1662



Scale 1:600 – Lengths are in Metres.



LEGEND

Final surface contours based on A.H.D datum at an interval of 0.5m, shown as: — — 24.0 — —

Natural surface contours in undisturbed areas at an interval of 1.0m shown: 24.0

Where applicable, areas to be filled from natural surface are shown as:

Depth of Fill + (24.0)

Easement for Drainage

Earthworks Batter

Drainage Line

Drainage Pit

Drainage Gully Pit

Drainage MH

Water Line

Water Conduit

Water Service Point of Entry

Water Stop Valve

Fire Hydrant



Kerb/Kerb & Channel

Road Centreline

Building Envelope
in accordance with
Approved Building Envelope
Plan 7081 P 06 BE A
(RL/44/2008/B) received
25/05/16 by Saunders Havill
Group Pty Ltd

Q100 Flood Line



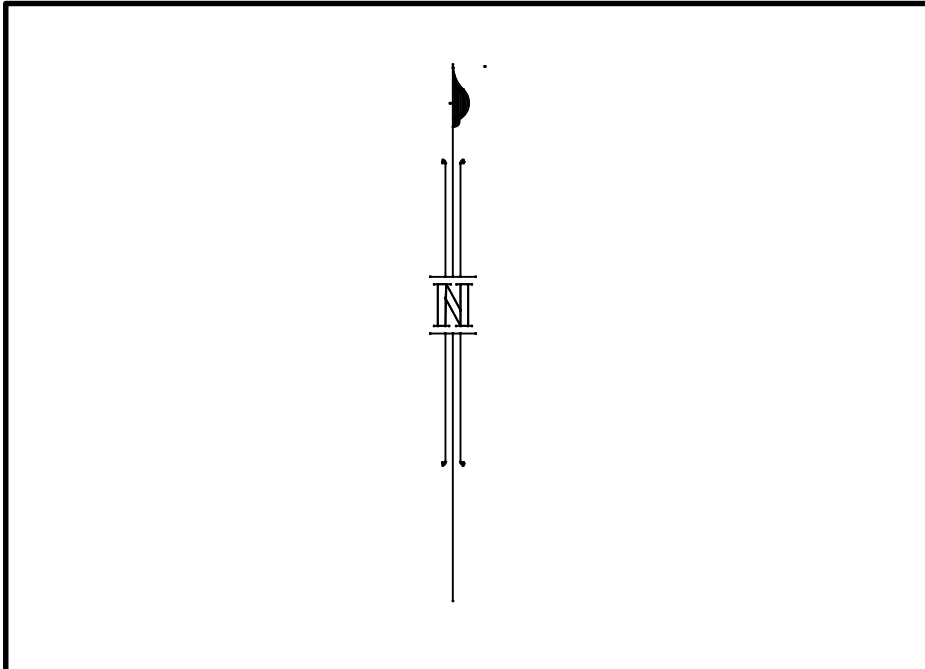
AMENDMENTS

[illegible]

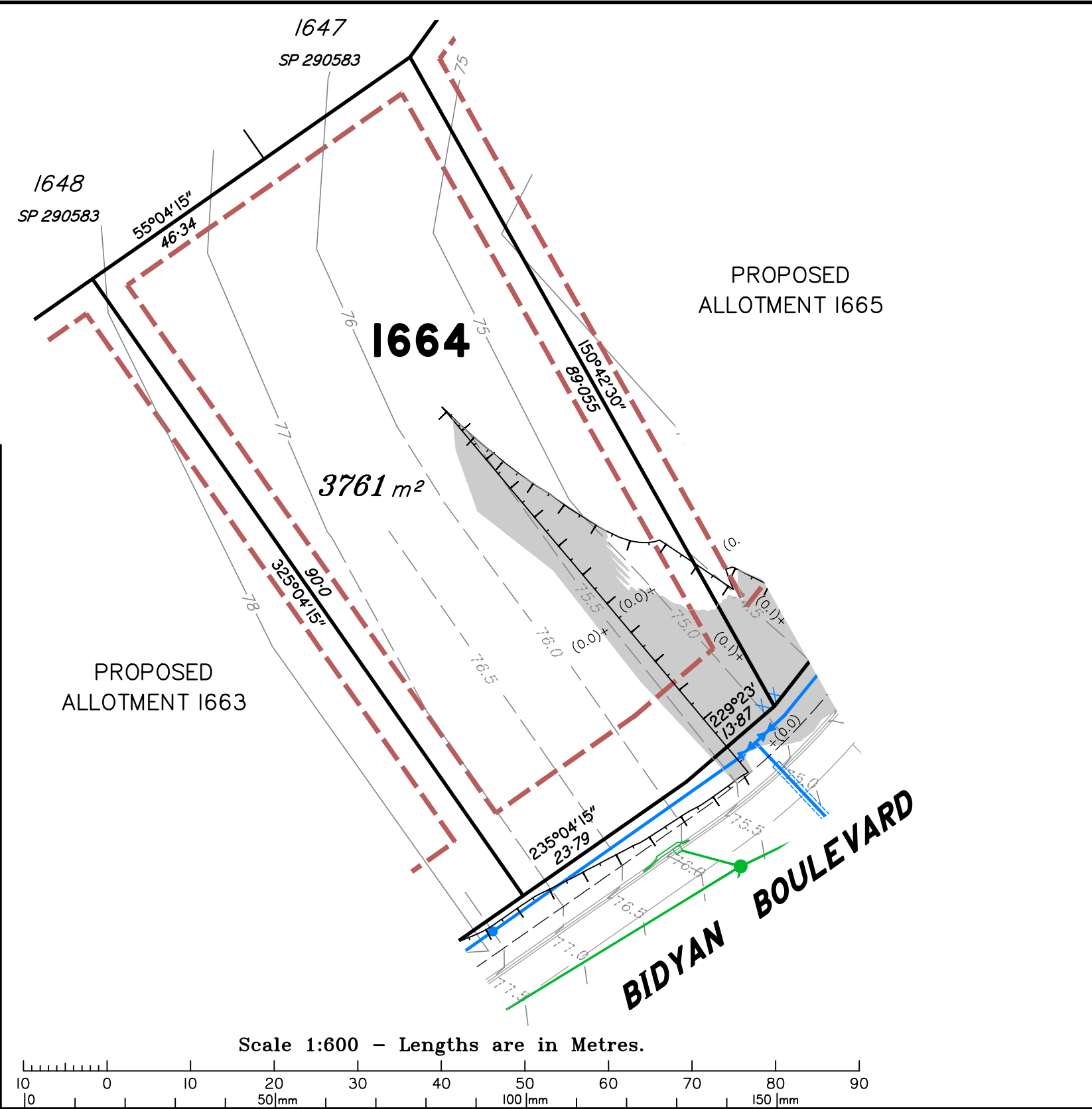
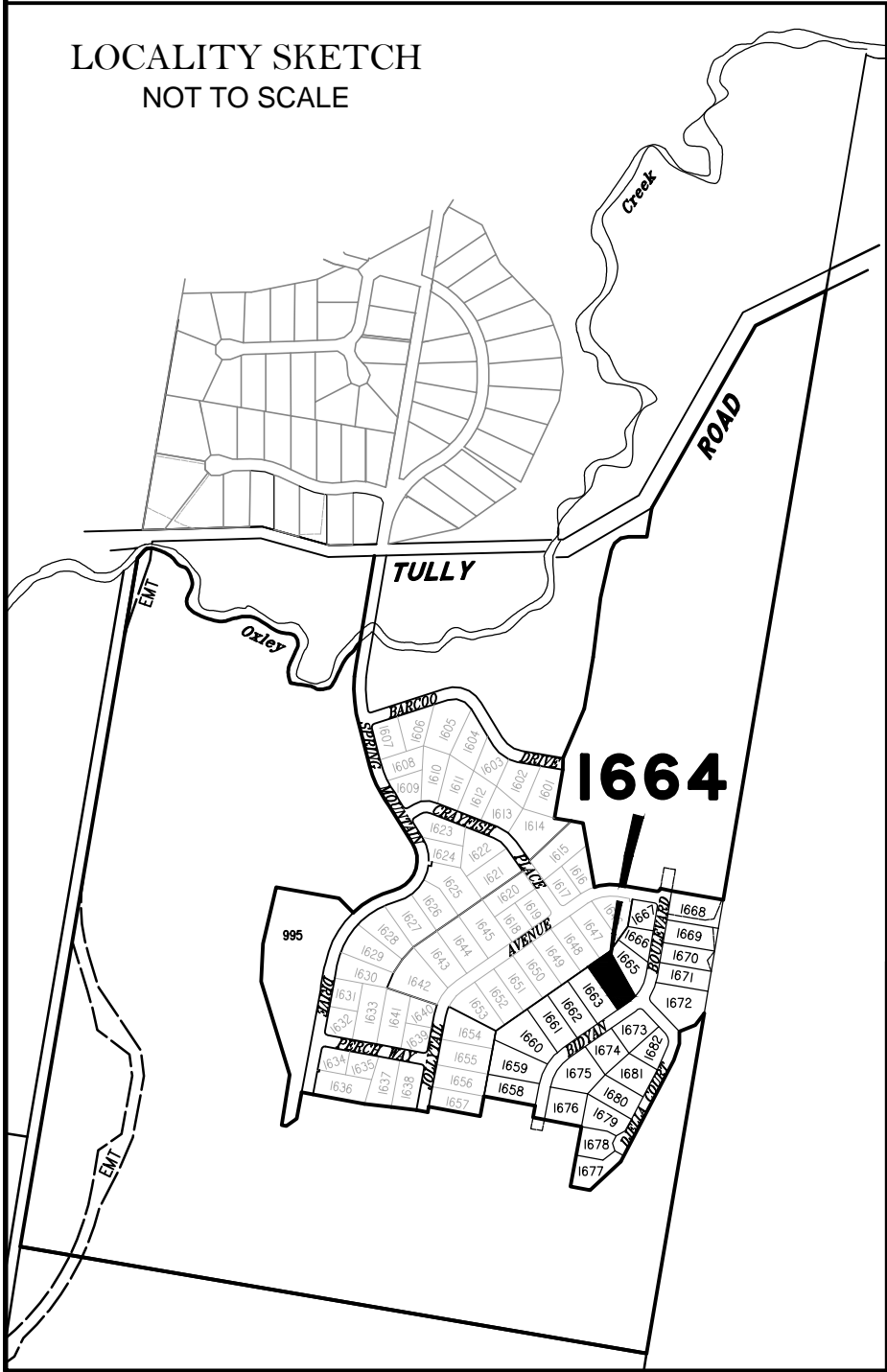
DRAWN	DATE	CHECKED	DATE
KDC	9.3.2017	BVD	7.4.2017

SCALE @ A3
1:6

DWG. NO.	15159-07C-1663
----------	----------------



LOCALITY SKETCH
NOT TO SCALE



DISCLOSURE PLAN FOR PROPOSED LOT 1664 SPRING MOUNTAIN STAGE 16C

Proposed Lot 1664 is described as
part of Lot 503 on SP290583
currently part of Lot 37 on S311685

Locality of NEW BEITH

*I, Kenneth William BURNETT *, certify
that the details shown on this sketch
plan are correct.*

[Signature] 7.4.2017
Date

* of Schlencker Surveying (Qld) Pty. Ltd.
A.C.N. 063 830 642

IMPORTANT NOTES:

This plan has been prepared for PEET Pty Ltd
for the purposes of disclosure under the Land
Sales Act. It is not to be used by any other
person/s or corporation/s or for any other
purpose/s.

All areas and dimension are subject to final
survey and relevant authority approval.
Ancillary information such as services,
streetscaping, banks, batters, retaining walls,
fencing, footpaths & building envelopes are
indicative only and are subject to relevant
authority approvals and construction.

Levels and Contours shown are not to be
used for building design or construction.
A site survey is required.

Compaction of all fill shown on this plan will
be inspected & tested to Level 1 in
accordance with AS 3798-2007 except as
noted heron.

These notes form an integral part of this plan
and no part of this plan may be reproduced in
whole or in part without these notes.

AMENDMENTS	
DESCRIPTION	DATE
C Fill Area Amended	8.5.17

SCHLENCKER SURVEYING (QLD)
Gold Coast ♦ Brisbane ♦ Rockhampton

Consultants in Surveying,
Mapping & Development

A.B.N. 36 909 833 411
PO Box 41,
Helensvale QLD 4212.

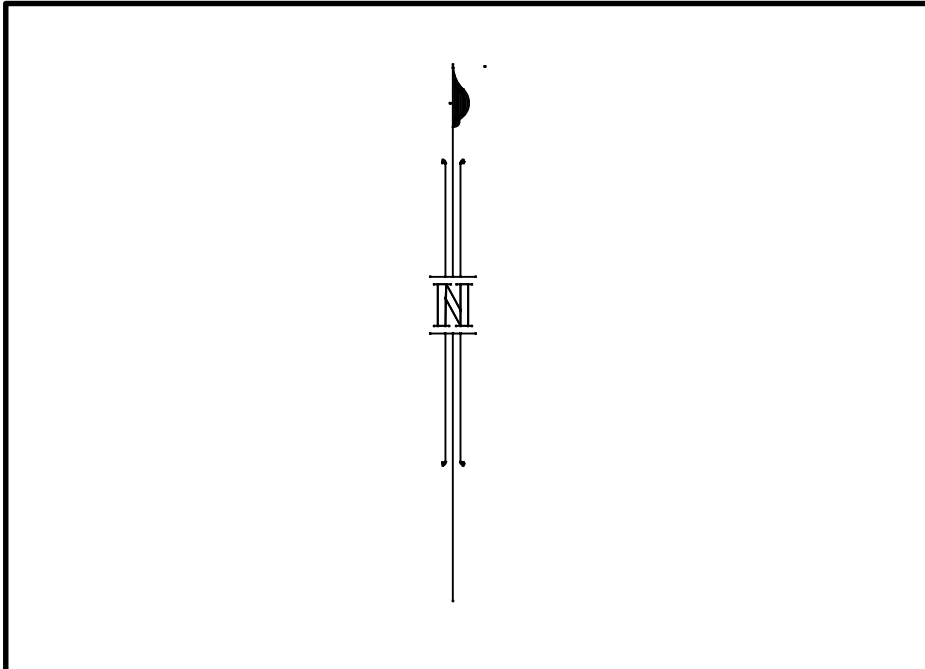
Suite 206,
Helensvale Professional Centre
3 Sir John Overall Dr.,
Helensvale QLD 4212.

Ph.: (07) 5573 6744
Fax: (07) 5573 6755
Mob.: 0413 945 959
EMAIL: mail@ssq.net.au

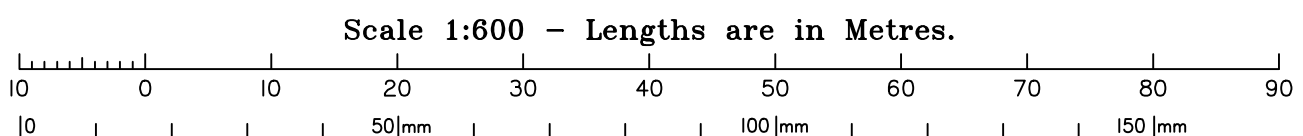
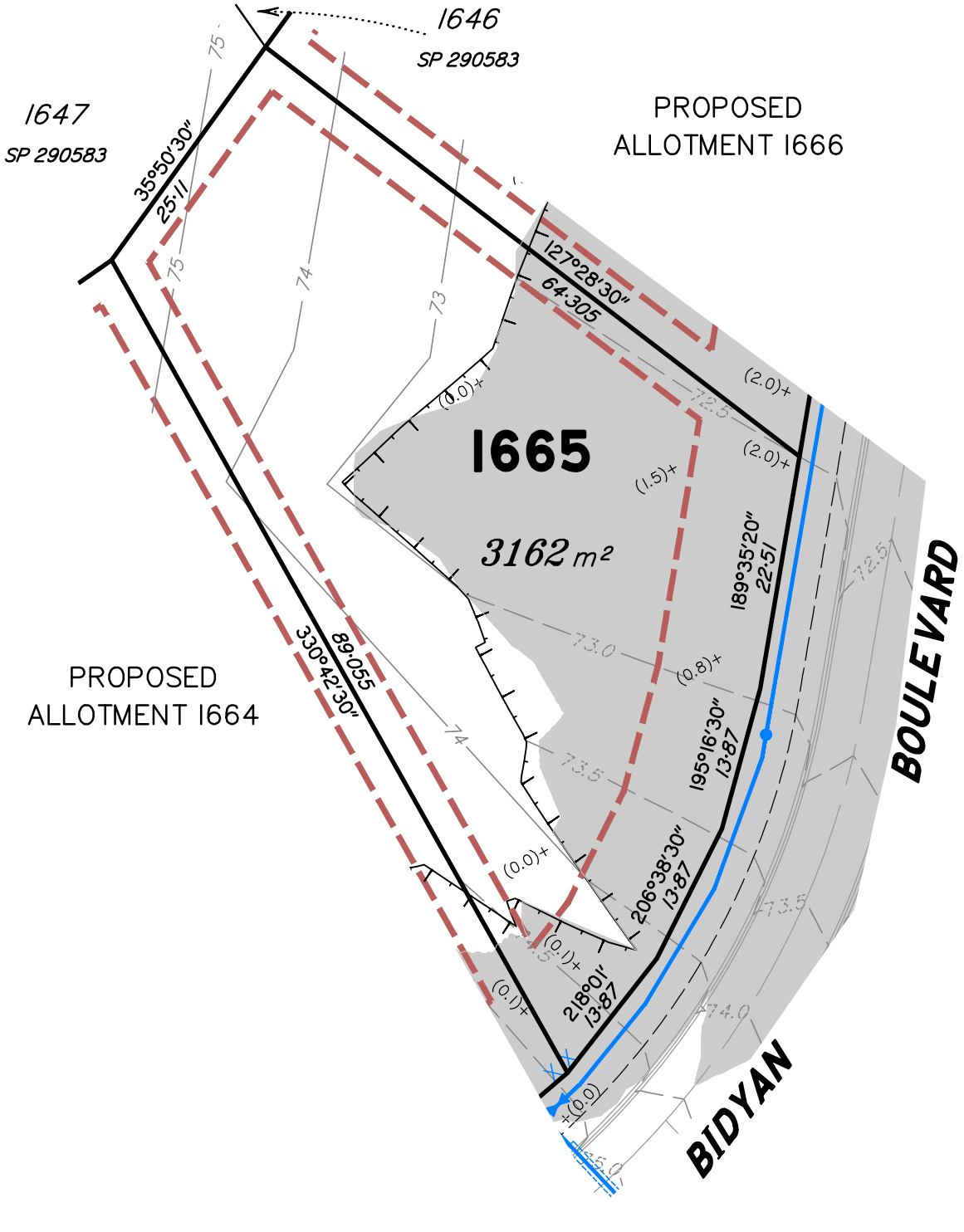
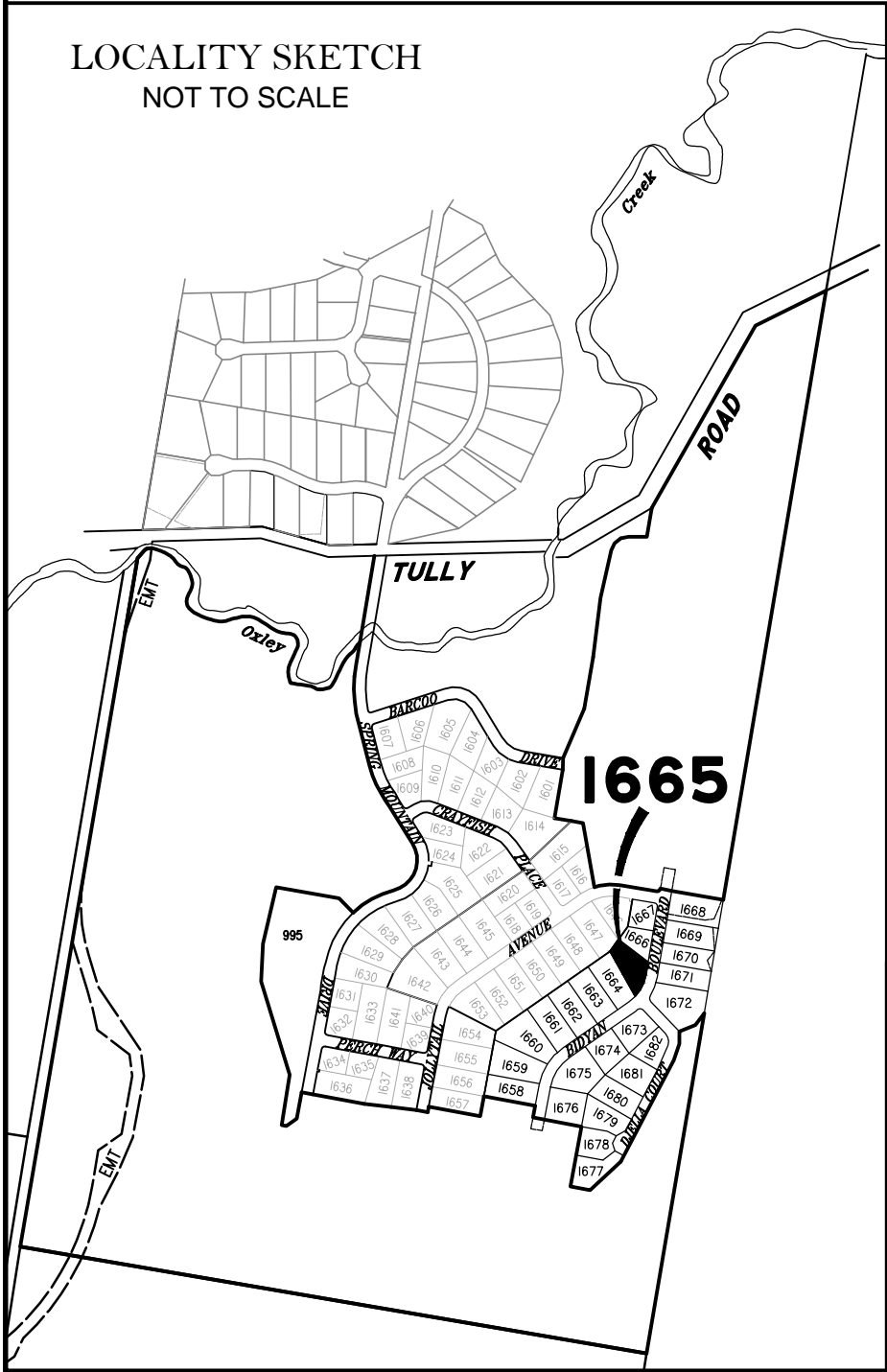
DRAWN	DATE	CHECKED	DATE
KDC	9.3.2017	BVD	7.4.2017

SCALE: A3
1:600

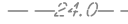
DWG. NO.
15159-07C-1664




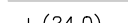
LOCALITY SKETCH
NOT TO SCALE

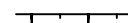



LEGEND


Final surface contours based on A.H.D datum at an interval of 0.5m, shown as:  -24.0-


Natural surface contours in undisturbed areas at an interval of 1.0m shown:  -24.0-


Where applicable, areas to be filled from natural surface are shown as: 

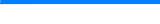
Depth of Fill  + (24.0)


Easement for Drainage  EMT


Earthworks Batter 


Drainage Line 


Drainage Pit 


Drainage Gully Pit 


Drainage MH 


Water Line 


Water Conduit 


Water Service Point of Entry 


Water Stop Valve 

Fire Hydrant 

Kerb/Kerb & Channel 

Road Centreline 

Building Envelope in accordance with Approved Building Envelope Plan 7081 P 06 BE A (RL/44/2008/B) received 25/05/16 by Saunders Havill Group Pty Ltd 

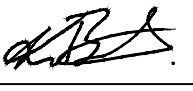
Q100 Flood Line 

DISCLOSURE PLAN FOR PROPOSED LOT 1665 SPRING MOUNTAIN STAGE 16C

Proposed Lot 1665 is described as
part of Lot 503 on SP290583
currently part of Lot 37 on S311685

Locality of NEW BEITH

I, Kenneth William BURNETT *, certify
that the details shown on this sketch
plan are correct.

 7.4.2017
Date

* of Schlencker Surveying (Qld) Pty. Ltd.
A.C.N. 063 830 642

IMPORTANT NOTES:

This plan has been prepared for PEET Pty Ltd for the purposes of disclosure under the Land Sales Act. It is not to be used by any other person/s or corporation/s or for any other purpose/s.

All areas and dimension are subject to final survey and relevant authority approval. Ancillary information such as services, streetscaping, banks, batters, retaining walls, fencing, footpaths & building envelopes are indicative only and are subject to relevant authority approvals and construction.

Levels and Contours shown are not to be used for building design or construction. A site survey is required.

Compaction of all fill shown on this plan will be inspected & tested to Level 1 in accordance with AS 3798-2007 except as noted heron.

These notes form an integral part of this plan and no part of this plan may be reproduced in whole or in part without these notes.

AMENDMENTS		
DESCRIPTION	DATE	
C Fill Area Amended	8.5.17	


SCHLENCKER SURVEYING (QLD)
Gold Coast ♦ Brisbane ♦ Rockhampton

Consultants in Surveying,
Mapping & Development

A.B.N. 36 909 833 411
PO Box 41,
Helensvale QLD 4212.

Suite 206,
Helensvale Professional Centre
3 Sir John Overall Dr.,
Helensvale QLD 4212.

Ph.: (07) 5573 6744
Fax: (07) 5573 6755
Mob.: 0413 945 959
EMAIL: mail@ssq.net.au



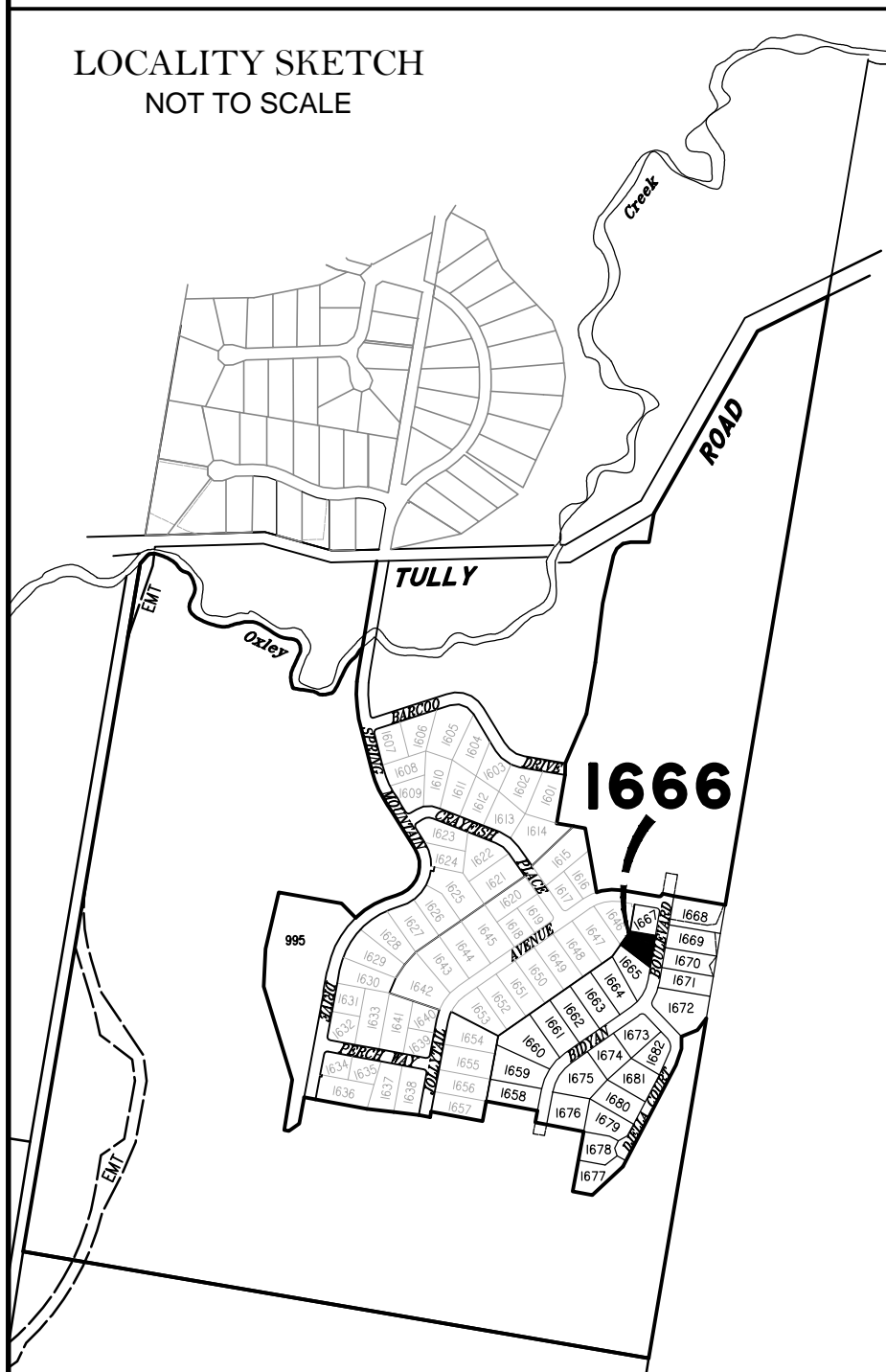
DRAWN	DATE	CHECKED	DATE
KDC	9.3.2017	BVD	7.4.2017

SCALE: A3
1:600

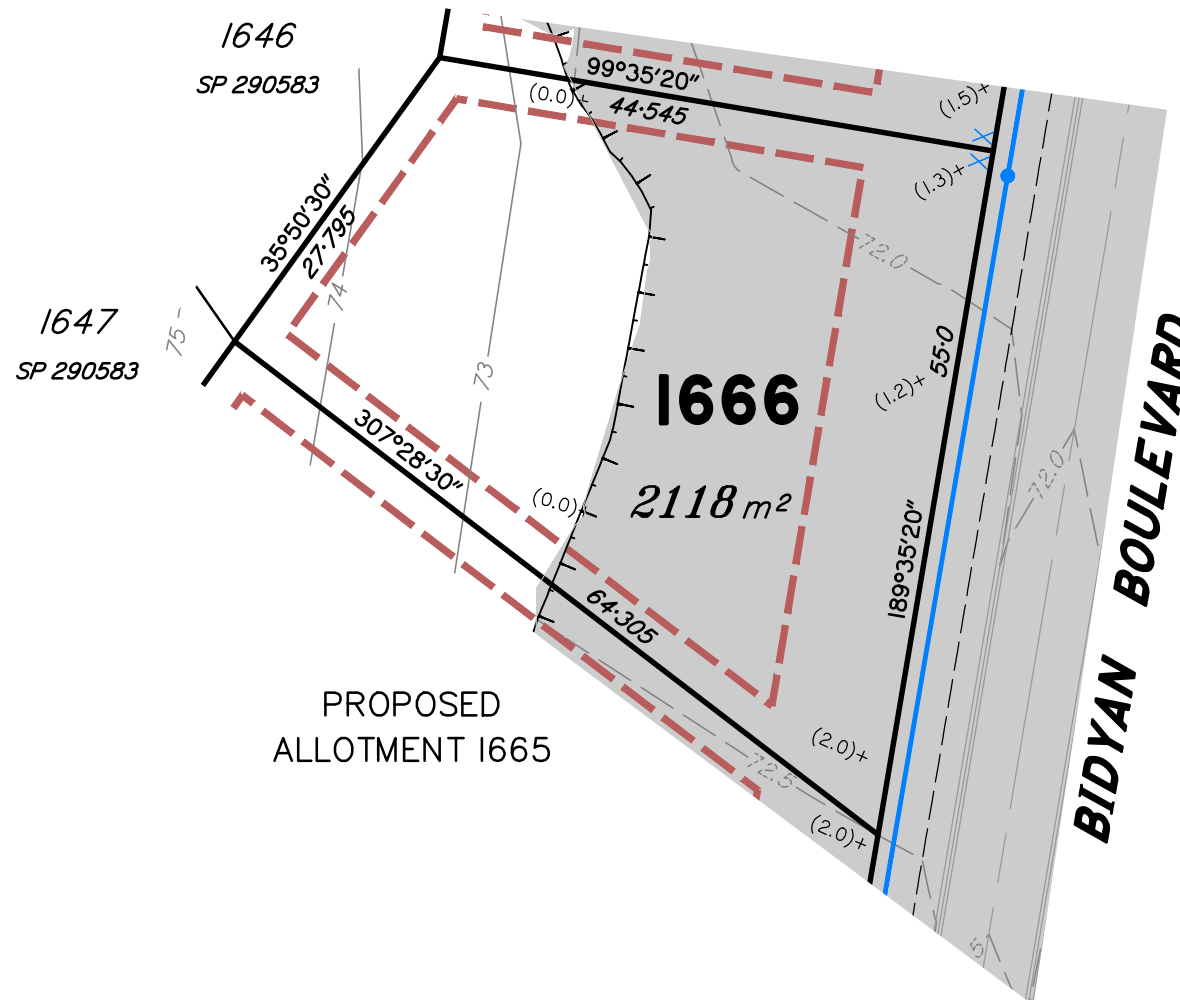
DWG. NO.
15159-07C-1665



LOCALITY SKETCH
NOT TO SCALE

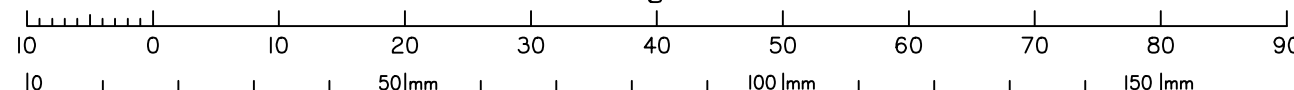


PROPOSED
ALLOTMENT 1667



PROPOSED
ALLOTMENT 1665

Scale 1:600 – Lengths are in Metres.



LEGEND

Final surface contours based on A.H.D datum at an interval of 0.5m, shown as: —24.0—

Natural surface contours in undisturbed areas at an interval of 1.0m shown: —24.0—

Where applicable, areas to be filled from natural surface are shown as:

Depth of Fill + (24.0)

Easement for Drainage EMT

Earthworks Batter

Drainage Line

Drainage Pit

Drainage Gully Pit

Drainage MH

Water Line

Water Conduit

Water Service Point of Entry

Water Stop Valve

Fire Hydrant

Kerb/Kerb & Channel

Road Centreline

Building Envelope in accordance with Approved Building Envelope Plan 7081 P 06 BE A (RL/44/2008/B) received 25/05/16 by Saunders Havill Group Pty Ltd

Q100 Flood Line

DISCLOSURE PLAN
FOR PROPOSED LOT 1666
SPRING MOUNTAIN
STAGE 16C

Proposed Lot 1666 is described as
part of Lot 503 on SP290583
currently part of Lot 37 on S311685

Locality of NEW BEITH

I, Kenneth William BURNETT *, certify
that the details shown on this sketch
plan are correct.

7.4.2017

Date

* of Schlencker Surveying (Qld) Pty. Ltd.
A.C.N. 063 830 642

IMPORTANT NOTES:

This plan has been prepared for PEET Pty Ltd
for the purposes of disclosure under the Land
Sales Act. It is not to be used by any other
person/s or corporation/s or for any other
purpose/s.

All areas and dimension are subject to final
survey and relevant authority approval.
Ancillary information such as services,
streetscaping, banks, batters, retaining walls,
fencing, footpaths & building envelopes are
indicative only and are subject to relevant
authority approvals and construction.

Levels and Contours shown are not to be
used for building design or construction.
A site survey is required.

Compaction of all fill shown on this plan will
be inspected & tested to Level 1 in
accordance with AS 3798-2007 except as
noted heron.

These notes form an integral part of this plan
and no part of this plan may be reproduced in
whole or in part without these notes.

AMENDMENTS

DESCRIPTION	DATE
C. Fill Area Amended	8.5.17

SCHLENCKER SURVEYING (QLD)
Gold Coast ♦ Brisbane ♦ Rockhampton

Consultants in Surveying,
Mapping & Development



A.B.N. 36 909 833 411
PO Box 41,
Helensvale QLD 4212.

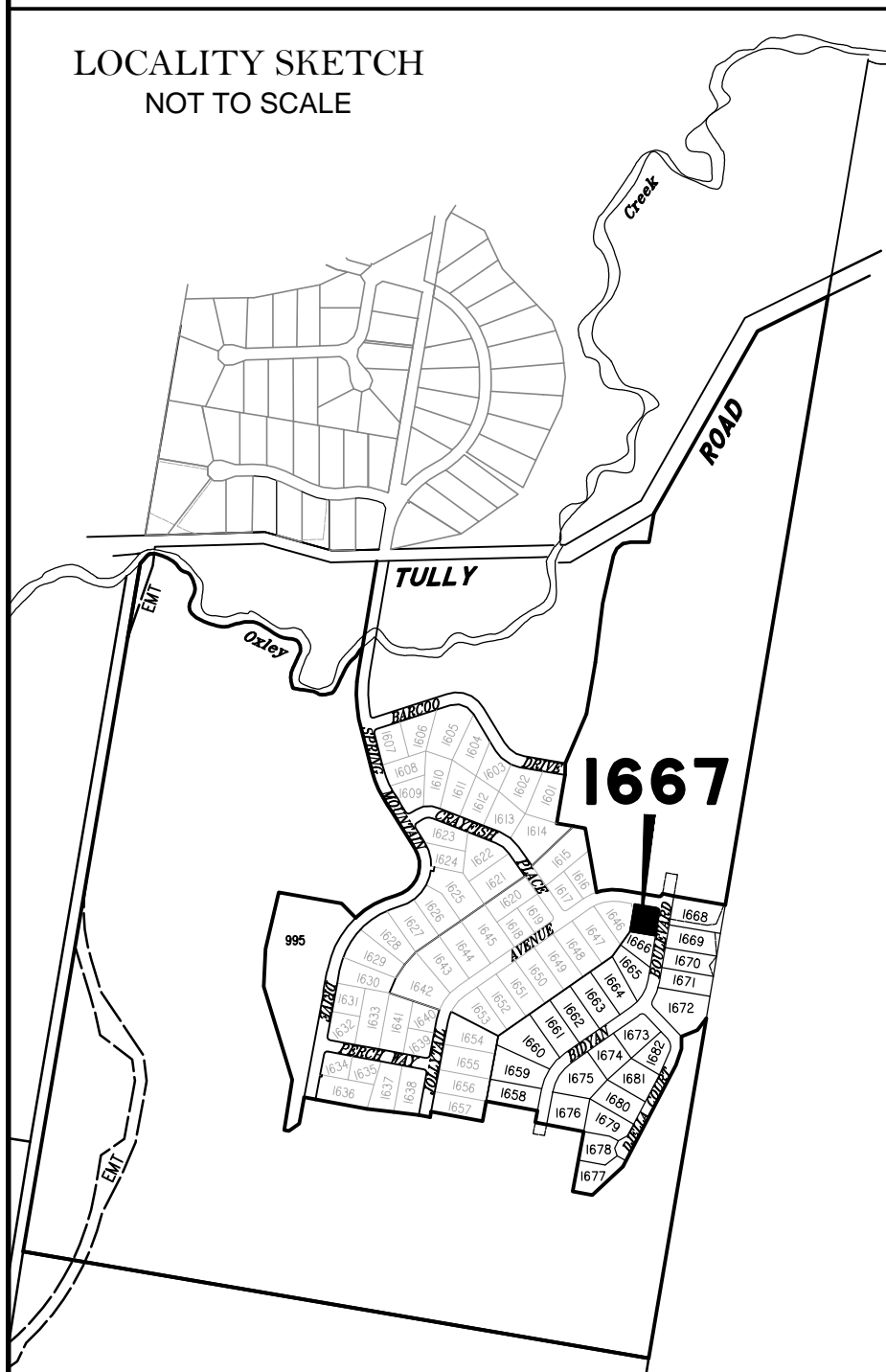
Suite 206,
Helensvale Professional Centre
3 Sir John Overall Dr.,
Helensvale QLD 4212.

Ph.: (07) 5573 6744
Fax: (07) 5573 6755
Mob.: 0413 945 959
EMAIL: mail@ssq.net.au

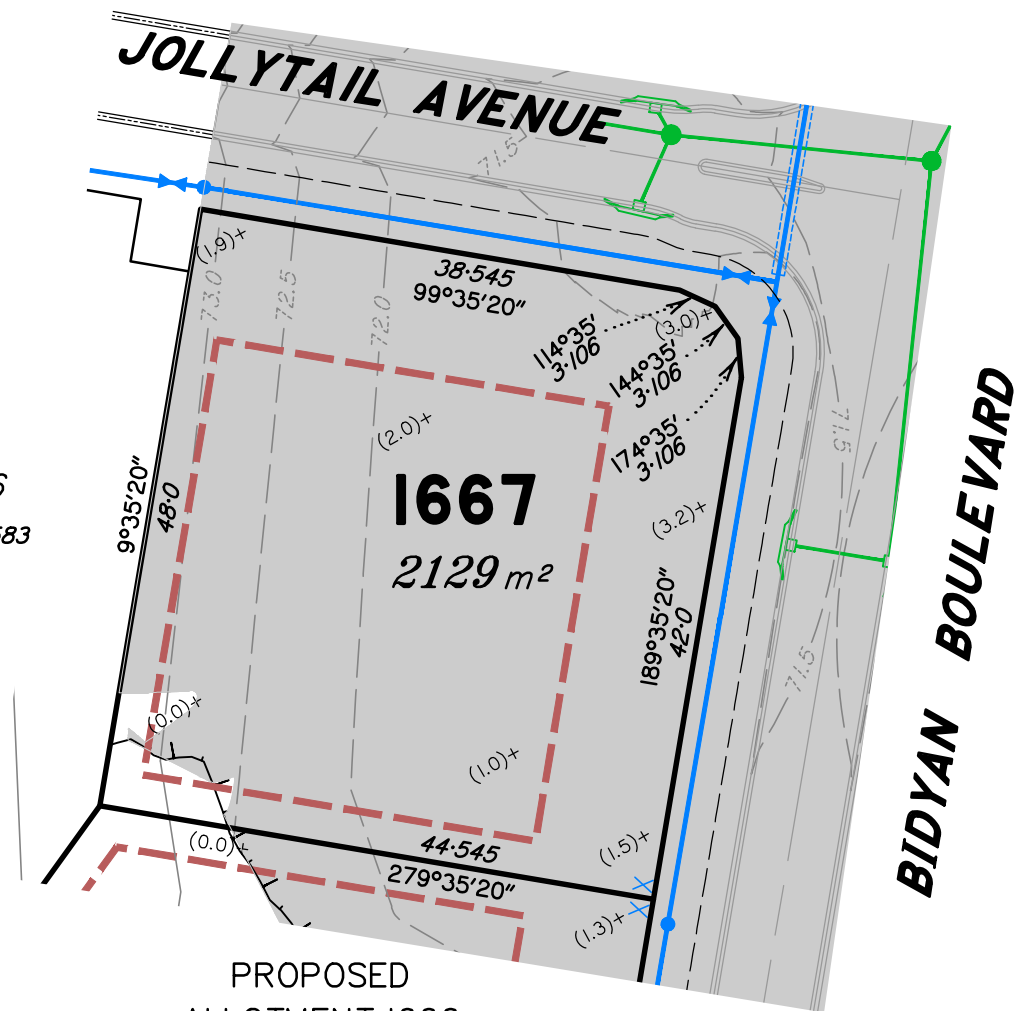
DRAWN	DATE	CHECKED	DATE
KDC	9.3.2017	BVD	7.4.2017
SCALE A3 1:600	DWG. NO. 15159-07C-1666		



LOCALITY SKETCH
NOT TO SCALE

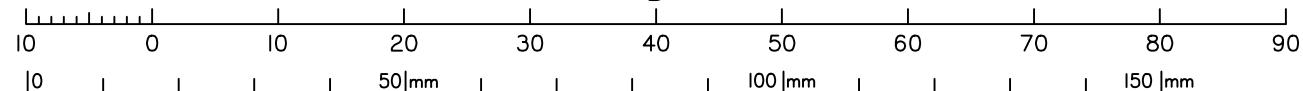


1646
SP 290583



PROPOSED
ALLOTMENT 1666

Scale 1:600 – Lengths are in Metres.



LEGEND

Final surface contours based on A.H.D datum at an interval of 0.5m, shown as: —24.0—

Natural surface contours in undisturbed areas at an interval of 1.0m shown: —24.0—

Where applicable, areas to be filled from natural surface are shown as:

Depth of Fill + (24.0)

Easement for Drainage

Earthworks Batter

Top
Toe

Drainage Line

Drainage Pit

Drainage Gully Pit

Drainage MH

Water Line

Water Conduit

Water Service Point of Entry

Water Stop Valve

Fire Hydrant

Kerb/Kerb & Channel

Kerb/Kerb & Channel

Road Centreline

Building Envelope
in accordance with
Approved Building Envelope
Plan 7081 P 06 BE A
(RL/44/2008/B) received
25/05/16 by Saunders Havill
Group Pty Ltd

Q100 Flood Line

Kerb/Kerb & Channel

Road Centreline

Building Envelope

in accordance with

Approved Building Envelope

Plan 7081 P 06 BE A

(RL/44/2008/B) received

25/05/16 by Saunders Havill

Group Pty Ltd

Q100 Flood Line

DISCLOSURE PLAN
FOR PROPOSED LOT 1667
SPRING MOUNTAIN
STAGE 16C

Proposed Lot 1667 is described as
part of Lot 503 on SP290583
currently part of Lot 37 on S311685

Locality of NEW BEITH

I, Kenneth William BURNETT *, certify
that the details shown on this sketch
plan are correct.

7.4.2017

Date

* of Schlencker Surveying (Qld) Pty. Ltd.
A.C.N. 063 830 642

IMPORTANT NOTES:

This plan has been prepared for PEET Pty Ltd
for the purposes of disclosure under the Land
Sales Act. It is not to be used by any other
person/s or corporation/s or for any other
purpose/s.

All areas and dimension are subject to final
survey and relevant authority approval.
Ancillary information such as services,
streetscaping, banks, batters, retaining walls,
fencing, footpaths & building envelopes are
indicative only and are subject to relevant
authority approvals and construction.

Levels and Contours shown are not to be
used for building design or construction.
A site survey is required.

Compaction of all fill shown on this plan will
be inspected & tested to Level 1 in
accordance with AS 3798-2007 except as
noted heron.

These notes form an integral part of this plan
and no part of this plan may be reproduced in
whole or in part without these notes.

AMENDMENTS

DESCRIPTION	DATE
C Fill Area Amended	8.5.17

SCHLENCKER SURVEYING (QLD)
Gold Coast ♦ Brisbane ♦ Rockhampton

Consultants in Surveying,
Mapping & Development



A.B.N. 36 909 833 411
PO Box 41,
Helensvale QLD 4212.

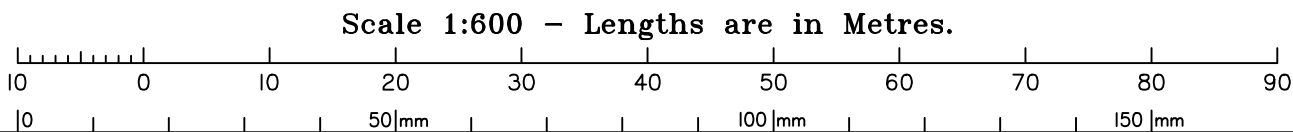
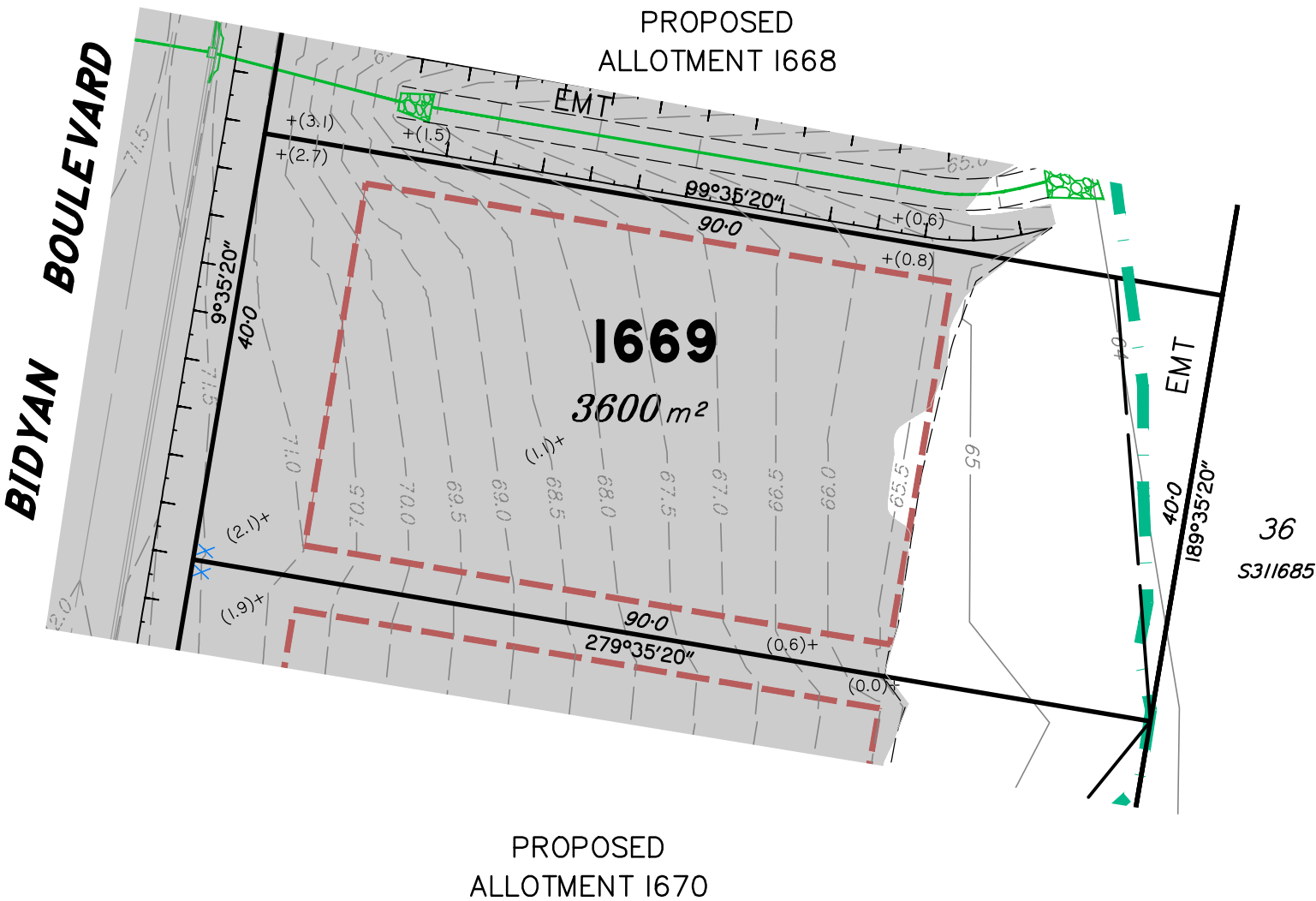
Suite 206,
Helensvale Professional Centre
3 Sir John Overall Dr.,
Helensvale QLD 4212.

Ph.: (07) 5573 6744
Fax: (07) 5573 6755
Mob.: 0413 945 959
EMAIL: mail@ssq.net.au

DRAWN	DATE	CHECKED	DATE
KDC	9.3.2017	BVD	7.4.2017
SCALE A3 1:600	DWG. NO. 15159-07C-1667		



LOCALITY SKETCH
NOT TO SCALE



LEGEND

Final surface contours based on A.H.D datum at an interval of 0.5m, shown as: —24.0—

Natural surface contours in undisturbed areas at an interval of 1.0m shown: —24.0—

Where applicable, areas to be filled from natural surface are shown as: —24.0—

Depth of Fill + (24.0)

Easement for Drainage EMT

Earthworks Batter

Drainage Line

Drainage Pit

Drainage Gully Pit

Drainage MH

Water Line

Water Conduit

Water Service Point of Entry

Water Stop Valve

Fire Hydrant

Kerb/Kerb & Channel

Road Centreline

Building Envelope in accordance with Approved Building Envelope Plan 7081 P 06 BE A (RL/44/2008/B) received 25/05/16 by Saunders Havill Group Pty Ltd

Q100 Flood Line

—24.0—

—24.0—

—24.0—

—24.0—

—24.0—

—24.0—

—24.0—

—24.0—

—24.0—

DISCLOSURE PLAN
FOR PROPOSED LOT 1669
SPRING MOUNTAIN
STAGE 16C

Proposed Lot 1669 is described as
part of Lot 503 on SP290583
currently part of Lot 37 on S311685

Locality of NEW BEITH

I, Kenneth William BURNETT *, certify
that the details shown on this sketch
plan are correct.

 21.4.2017
Date

* of Schlencker Surveying (Qld) Pty. Ltd.
A.C.N. 063 830 642

IMPORTANT NOTES:

This plan has been prepared for PEET Pty Ltd
for the purposes of disclosure under the Land
Sales Act. It is not to be used by any other
person/s or corporation/s or for any other
purpose/s.

All areas and dimension are subject to final
survey and relevant authority approval.
Ancillary information such as services,
streetscaping, banks, batters, retaining walls,
fencing, footpaths & building envelopes are
indicative only and are subject to relevant
authority approvals and construction.

Levels and Contours shown are not to be
used for building design or construction.
A site survey is required.

Compaction of all fill shown on this plan will
be inspected & tested to Level 1 in
accordance with AS 3798-2007 except as
noted heron.

These notes form an integral part of this plan
and no part of this plan may be reproduced in
whole or in part without these notes.

AMENDMENTS

DESCRIPTION	DATE
B. Easements added to Lots 1668-1670	21.4.17
C. Fill Area Amended	8.5.17

SCHLENCKER SURVEYING (QLD)
Gold Coast ♦ Brisbane ♦ Rockhampton

Consultants in Surveying,
Mapping & Development



A.B.N. 36 909 833 411
PO Box 41,
Helensvale QLD 4212.

Suite 206,
Helensvale Professional Centre
3 Sir John Overall Dr.,
Helensvale QLD 4212.

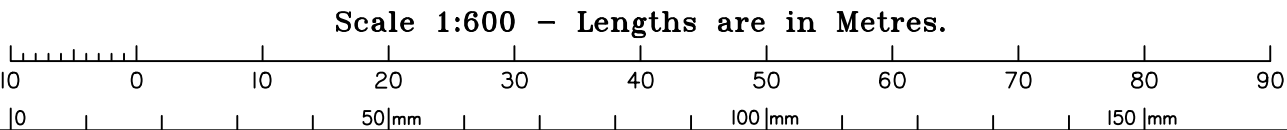
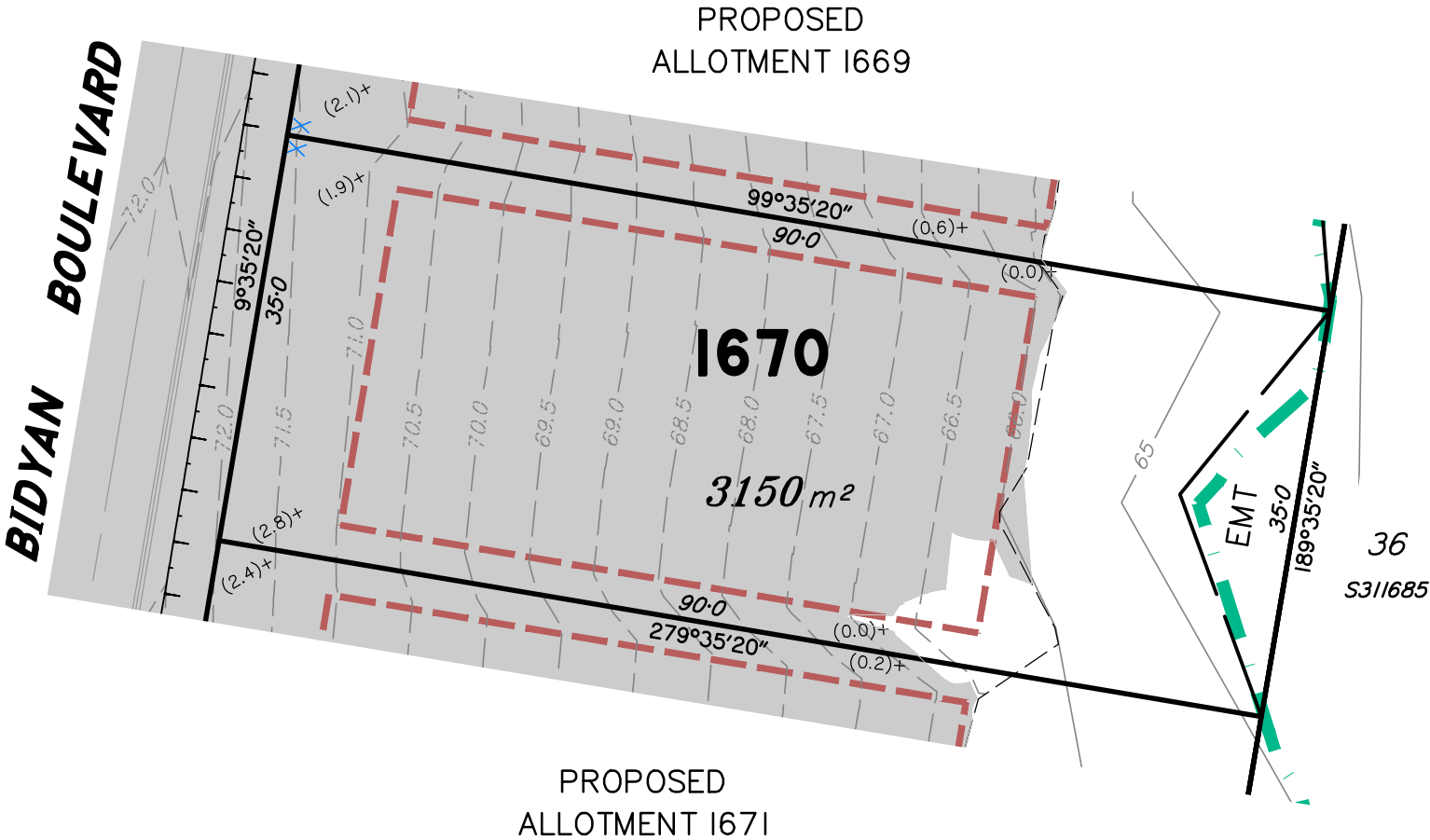
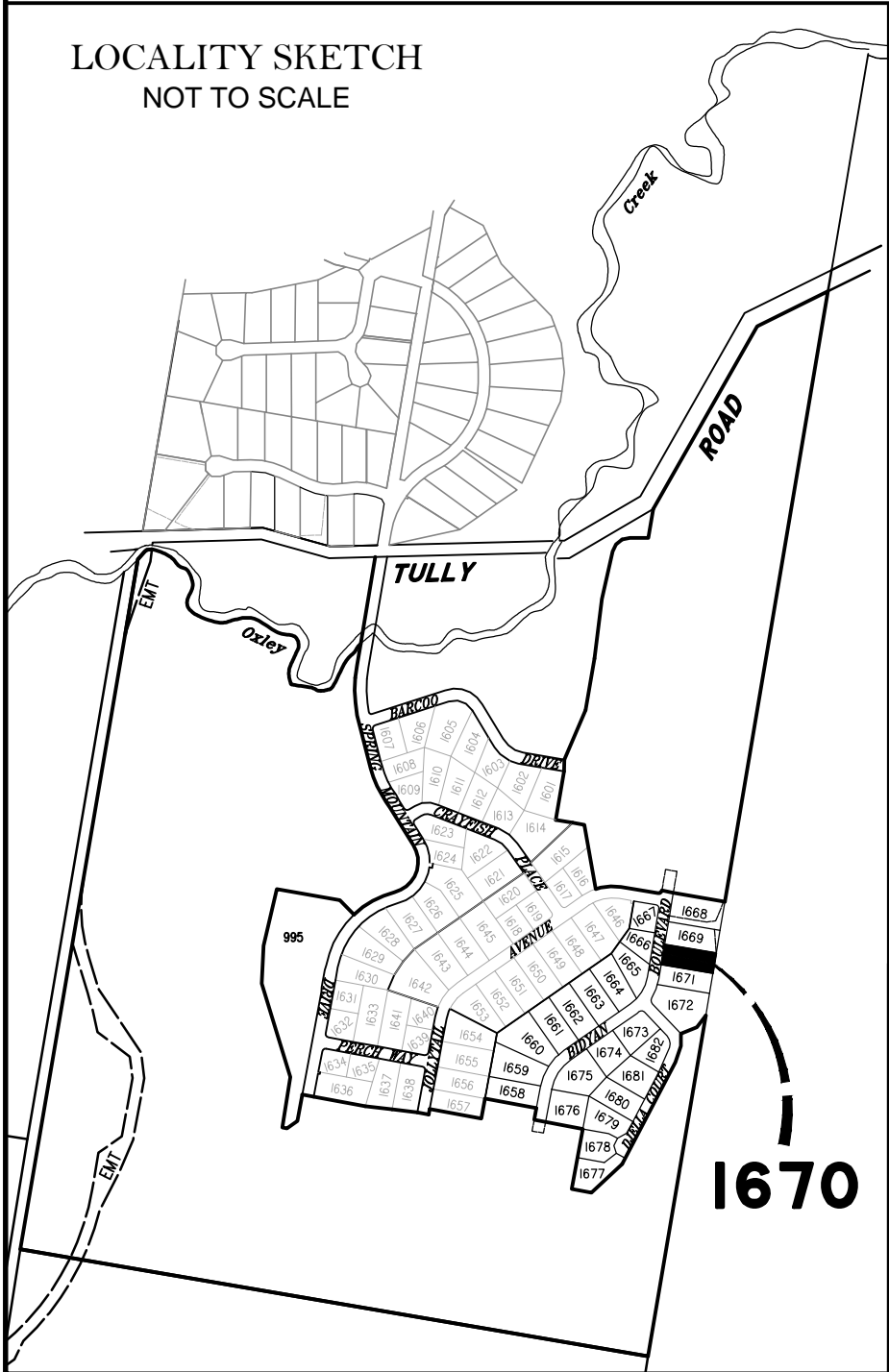
Ph.: (07) 5573 6744
Fax: (07) 5573 6755
Mob.: 0413 945 959
EMAIL: mail@ssq.net.au

DRAWN	DATE	CHECKED	DATE
KDC	9.3.2017	BVD	7.4.2017


SCALE: A3
1:600
DWG. NO.
15159-07C-1669





LOCALITY SKETCH
NOT TO SCALE




LEGEND

Final surface contours based on A.H.D datum at an interval of 0.5m, shown as: 


Natural surface contours in undisturbed areas at an interval of 1.0m shown: 

Where applicable, areas to be filled from natural surface are shown as: 

Depth of Fill  + (24.0)


Easement for Drainage  EMT

Earthworks Batter  Top
Toe

Drainage Line 


Drainage Pit 

Drainage Gully Pit 


Drainage MH 


Water Line 

Water Conduit 

Water Service Point of Entry 


Water Stop Valve 

Fire Hydrant 

Kerb/Kerb & Channel 

Road Centreline 

Building Envelope
in accordance with
Approved Building Envelope
Plan 7081 P 06 BE A
(RL/44/2008/B) received
25/05/16 by Saunders Havill
Group Pty Ltd


Q100 Flood Line 

DISCLOSURE PLAN
FOR PROPOSED LOT 1670
SPRING MOUNTAIN
STAGE 16C

Proposed Lot 1670 is described as
part of Lot 503 on SP290583
currently part of Lot 37 on S311685

Locality of NEW BEITH

I, Kenneth William BURNETT *, certify
that the details shown on this sketch
plan are correct.

 21.4.2017

Date

* of Schlencker Surveying (Qld) Pty. Ltd.
A.C.N. 063 830 642

IMPORTANT NOTES:

This plan has been prepared for PEET Pty Ltd
for the purposes of disclosure under the Land
Sales Act. It is not to be used by any other
person/s or corporation/s or for any other
purpose/s.

All areas and dimension are subject to final
survey and relevant authority approval.
Ancillary information such as services,
streetscaping, banks, batters, retaining walls,
fencing, footpaths & building envelopes are
indicative only and are subject to relevant
authority approvals and construction.

Levels and Contours shown are not to be
used for building design or construction.
A site survey is required.

Compaction of all fill shown on this plan will
be inspected & tested to Level 1 in
accordance with AS 3798-2007 except as
noted heron.

These notes form an integral part of this plan
and no part of this plan may be reproduced in
whole or in part without these notes.

AMENDMENTS

	DESCRIPTION	DATE
B	Easements added to Lots 1668-1670	21.4.17
C	Fill Area Amended	8.5.17

SCHLENCKER SURVEYING (QLD)
Gold Coast ♦ Brisbane ♦ Rockhampton

Consultants in Surveying,
Mapping & Development



A.B.N. 36 909 833 411
PO Box 41,
Helensvale QLD 4212.

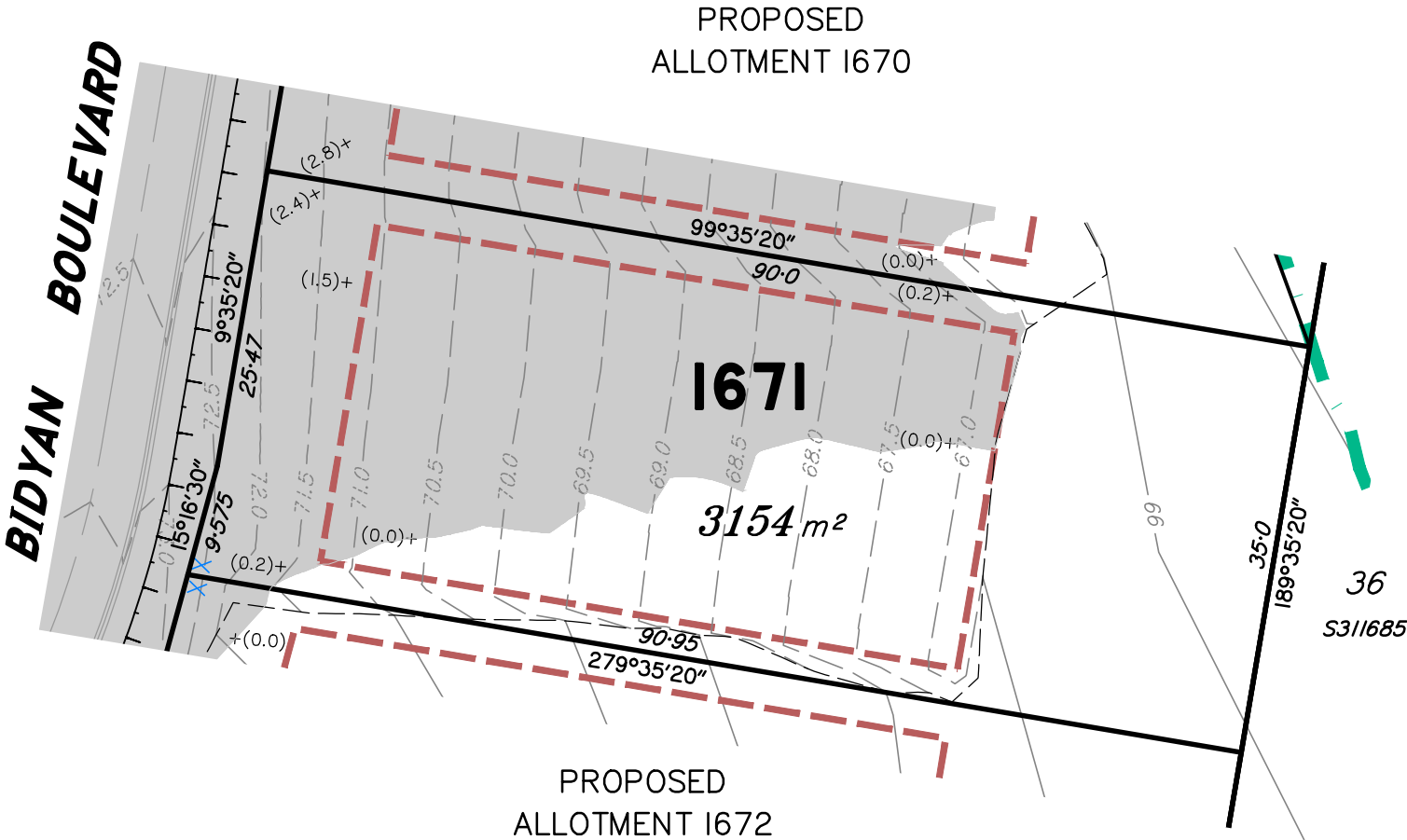
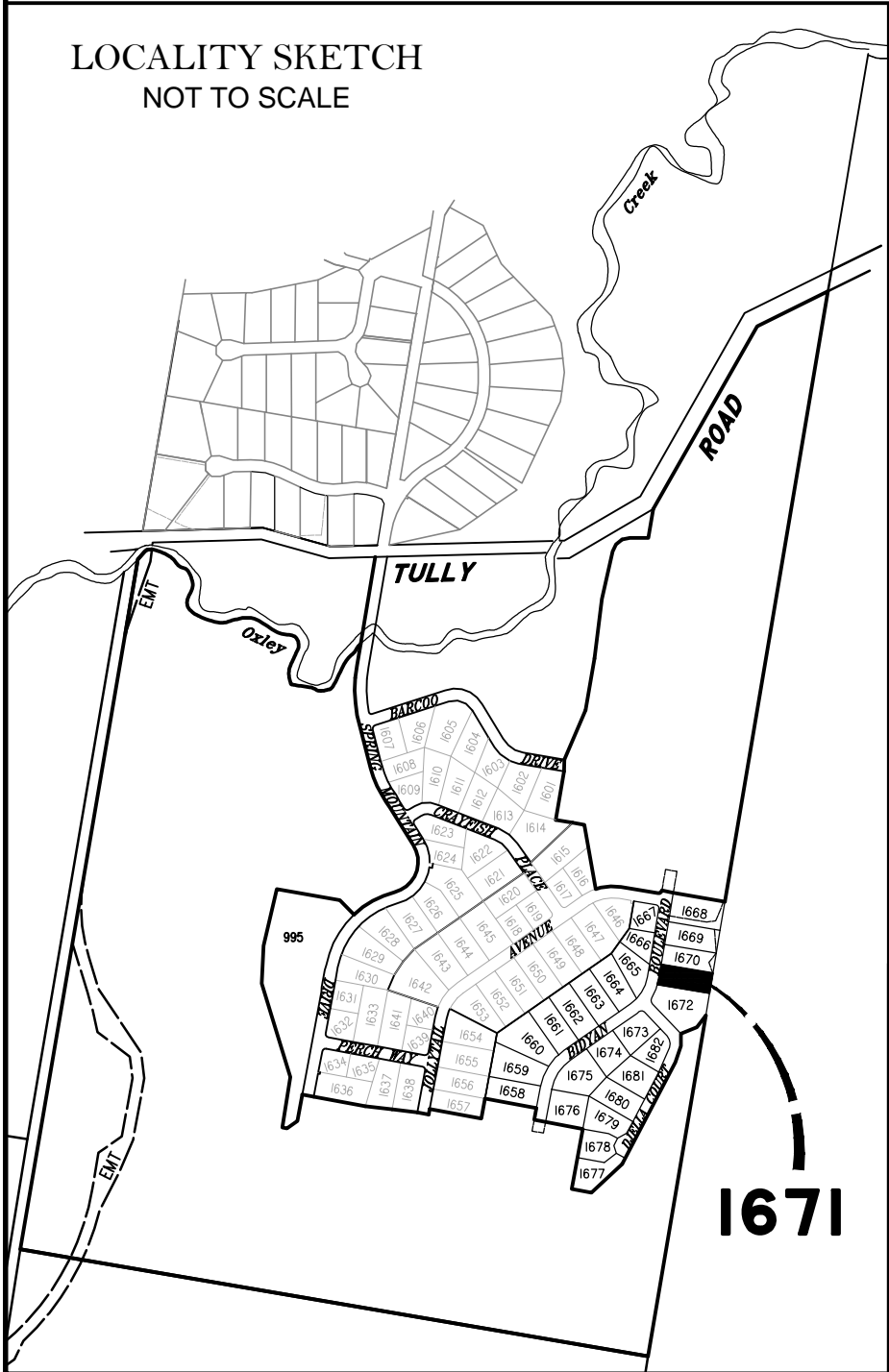
Suite 206,
Helensvale Professional Centre
3 Sir John Overall Dr.,
Helensvale QLD 4212.

Ph.: (07) 5573 6744
Fax: (07) 5573 6755
Mob.: 0413 945 959
EMAIL: mail@ssq.net.au

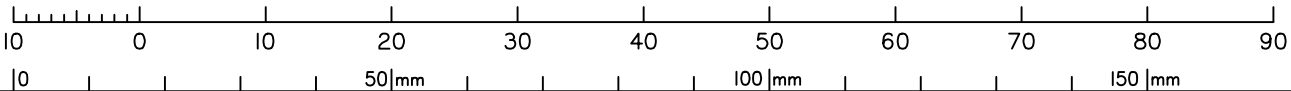
DRAWN	DATE	CHECKED	DATE
KDC	9.3.2017	BVD	7.4.2017
SCALE	1:600	DWG. NO.	15159-07C-1670



LOCALITY SKETCH
NOT TO SCALE



Scale 1:600 – Lengths are in Metres.



LEGEND

Final surface contours based on A.H.D datum at an interval of 0.5m, shown as: —24.0—

Natural surface contours in undisturbed areas at an interval of 1.0m shown: —24.0—

Where applicable, areas to be filled from natural surface are shown as: —24.0—

Depth of Fill + (24.0)

Easement for Drainage EMT

Earthworks Batter

Drainage Line

Drainage Pit

Drainage Gully Pit

Drainage MH

Water Line

Water Conduit

Water Service Point of Entry

Water Stop Valve

Fire Hydrant

Kerb/Kerb & Channel

Road Centreline

Building Envelope

in accordance with

Approved Building Envelope

Plan 7081 P 06 BE A

(RL/44/2008/B) received

25/05/16 by Saunders Havill

Group Pty Ltd

Q100 Flood Line

Kerb/Kerb & Channel

Road Centreline

Building Envelope

in accordance with

Approved Building Envelope

Plan 7081 P 06 BE A

(RL/44/2008/B) received

25/05/16 by Saunders Havill

Group Pty Ltd


Q100 Flood Line

DISCLOSURE PLAN
FOR PROPOSED LOT 1671
SPRING MOUNTAIN
STAGE 16C

Proposed Lot 1671 is described as
part of Lot 503 on SP290583
currently part of Lot 37 on S31/1685

Locality of NEW BEITH

I, Kenneth William BURNETT *, certify
that the details shown on this sketch
plan are correct.

 7.4.2017

Date

* of Schlencker Surveying (Qld) Pty. Ltd.
A.C.N. 063 830 642

IMPORTANT NOTES:

This plan has been prepared for PEET Pty Ltd
for the purposes of disclosure under the Land
Sales Act. It is not to be used by any other
person/s or corporation/s or for any other
purpose/s.

All areas and dimension are subject to final
survey and relevant authority approval.
Ancillary information such as services,
streetscaping, banks, batters, retaining walls,
fencing, footpaths & building envelopes are
indicative only and are subject to relevant
authority approvals and construction.

Levels and Contours shown are not to be
used for building design or construction.
A site survey is required.

Compaction of all fill shown on this plan will
be inspected & tested to Level 1 in
accordance with AS 3798-2007 except as
noted heron.

These notes form an integral part of this plan
and no part of this plan may be reproduced in
whole or in part without these notes.

AMENDMENTS

DESCRIPTION	DATE
C Fill Area Amended	8.5.17

SCHLENCKER SURVEYING (QLD)
Gold Coast ♦ Brisbane ♦ Rockhampton

Consultants in Surveying,
Mapping & Development



A.B.N. 36 909 833 411
PO Box 41,
Helensvale QLD 4212.

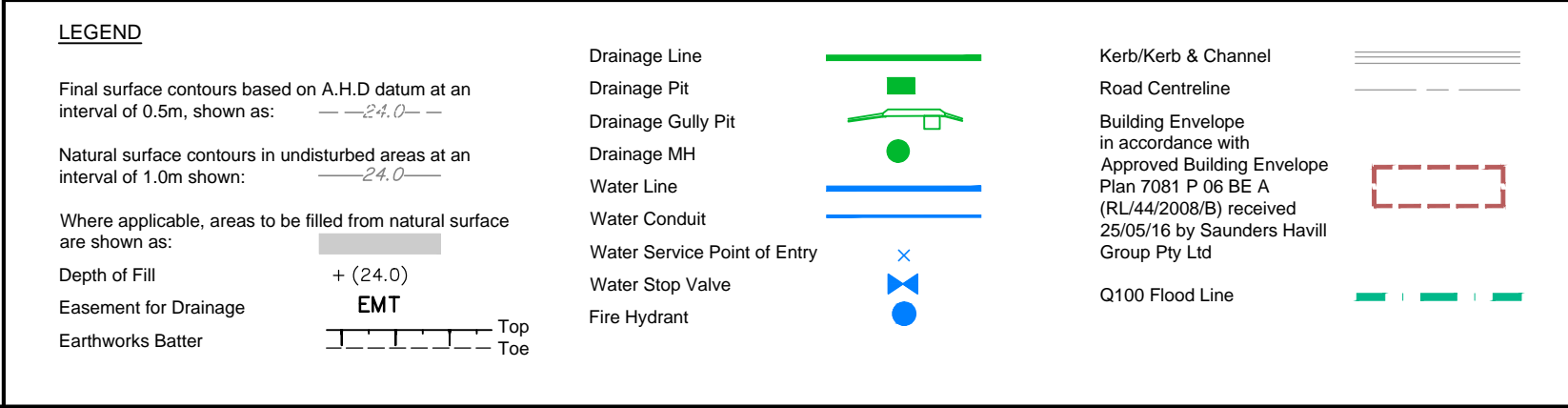
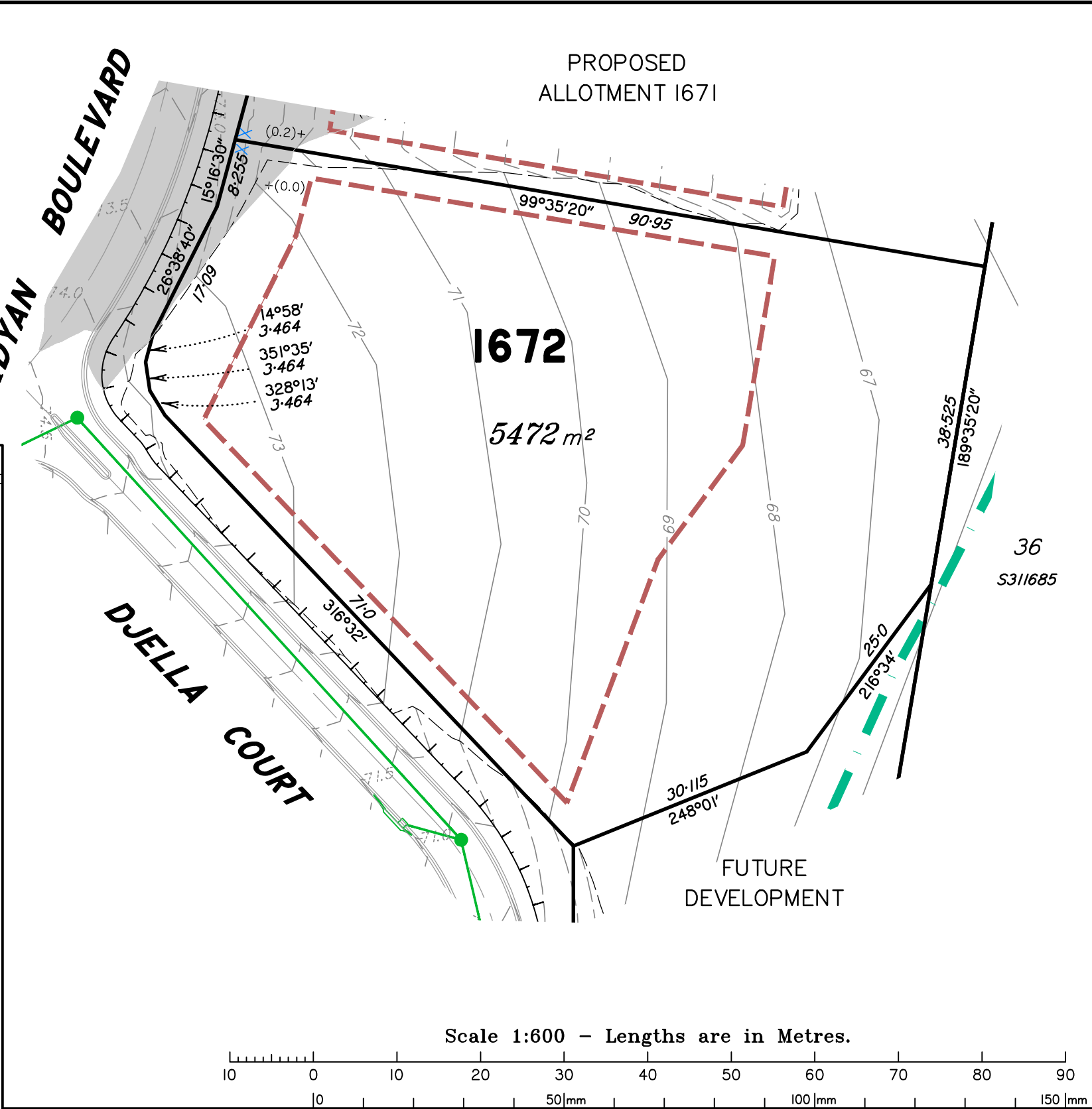
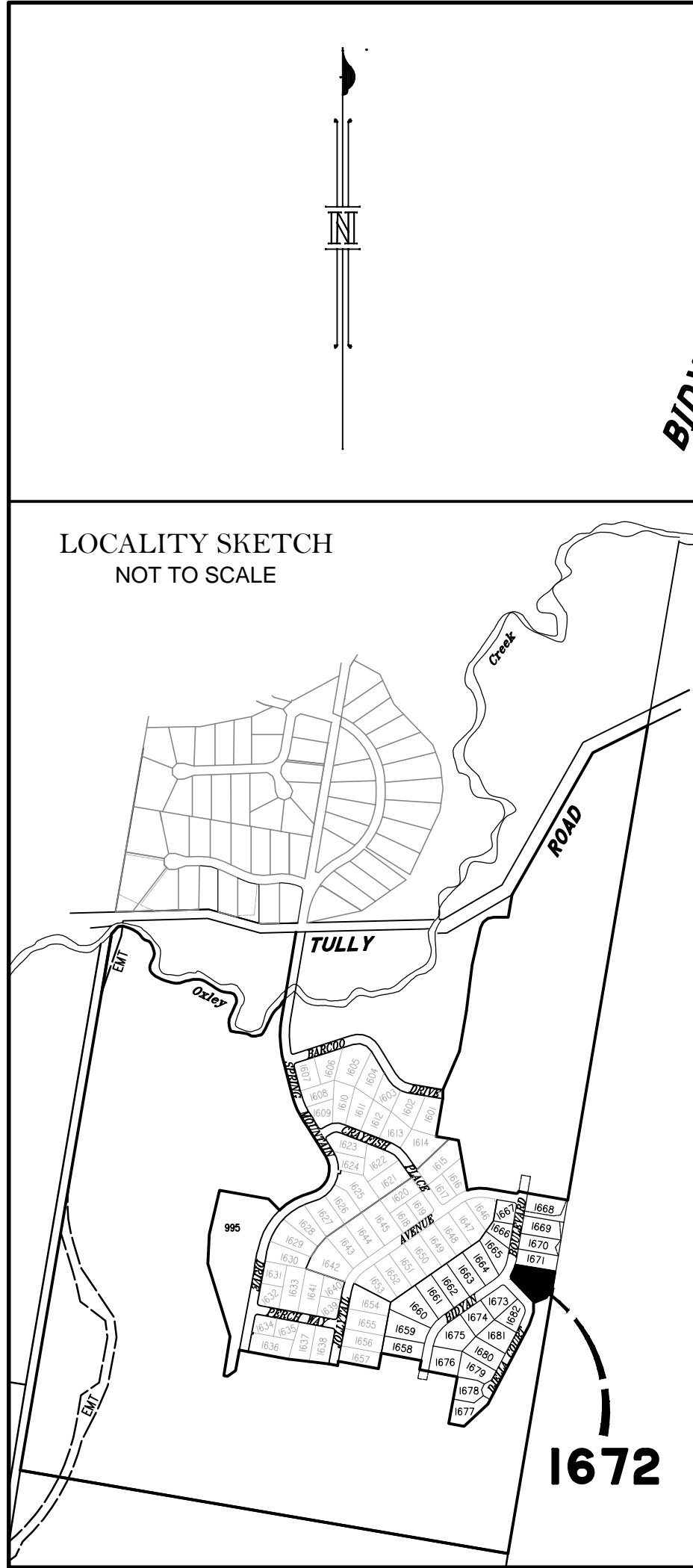
Suite 206,
Helensvale Professional Centre
3 Sir John Overall Dr.,
Helensvale QLD 4212.

Ph.: (07) 5573 6744
Fax: (07) 5573 6755
Mob.: 0413 945 959
EMAIL: mail@ssq.net.au

DRAWN	DATE	CHECKED	DATE
KDC	9.3.2017	BVD	7.4.2017

SCALE A3
1:600

DWG. NO.
15159-07C-1671




DISCLOSURE PLAN
FOR PROPOSED LOT 1672
SPRING MOUNTAIN
STAGE 16C

Proposed Lot 1672 is described as
part of Lot 503 on SP290583
currently part of Lot 37 on S311685

Locality of NEW BEITH

*I, Kenneth William BURNETT *, certify
that the details shown on this sketch
plan are correct.*

 7.4.2017
Date

* of Schlencker Surveying (Qld) Pty. Ltd.
A.C.N. 063 830 642

IMPORTANT NOTES:

This plan has been prepared for PEET Pty Ltd
for the purposes of disclosure under the Land
Sales Act. It is not to be used by any other
person/s or corporation/s or for any other
purpose/s.

All areas and dimension are subject to final
survey and relevant authority approval.
Ancillary information such as services,
streetscaping, banks, batters, retaining walls,
fencing, footpaths & building envelopes are
indicative only and are subject to relevant
authority approvals and construction.

Levels and Contours shown are not to be
used for building design or construction.
A site survey is required.

Compaction of all fill shown on this plan will
be inspected & tested to Level 1 in
accordance with AS 3798-2007 except as
noted heron.

These notes form an integral part of this plan
and no part of this plan may be reproduced in
whole or in part without these notes.

AMENDMENTS

DESCRIPTION	DATE
C Fill Area Amended	8.5.17

SCHLENCKER SURVEYING (QLD)
Gold Coast ♦ Brisbane ♦ Rockhampton

Consultants in Surveying,
Mapping & Development

A.B.N. 36 909 833 411
PO Box 41,
Helensvale QLD 4212.

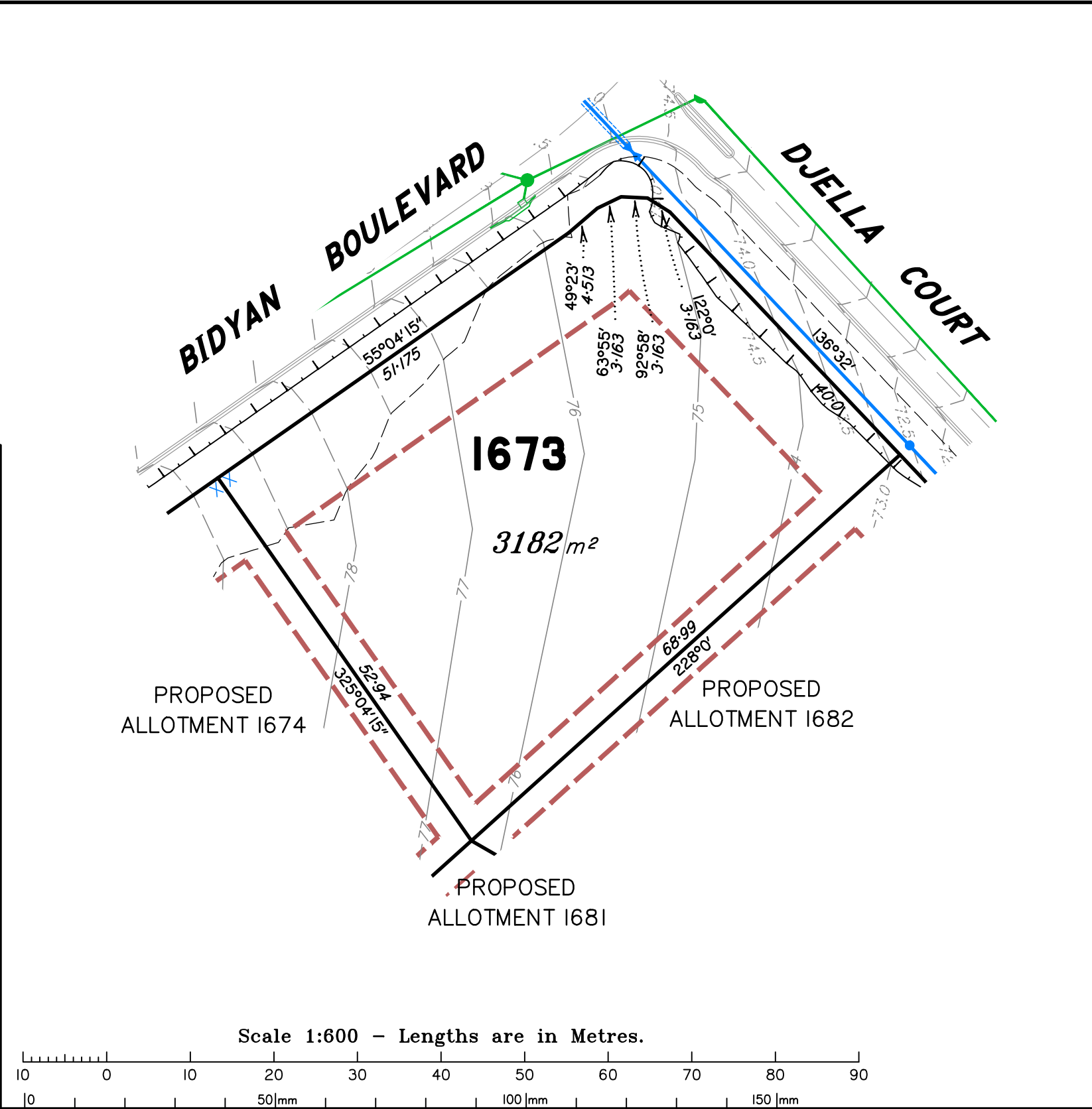
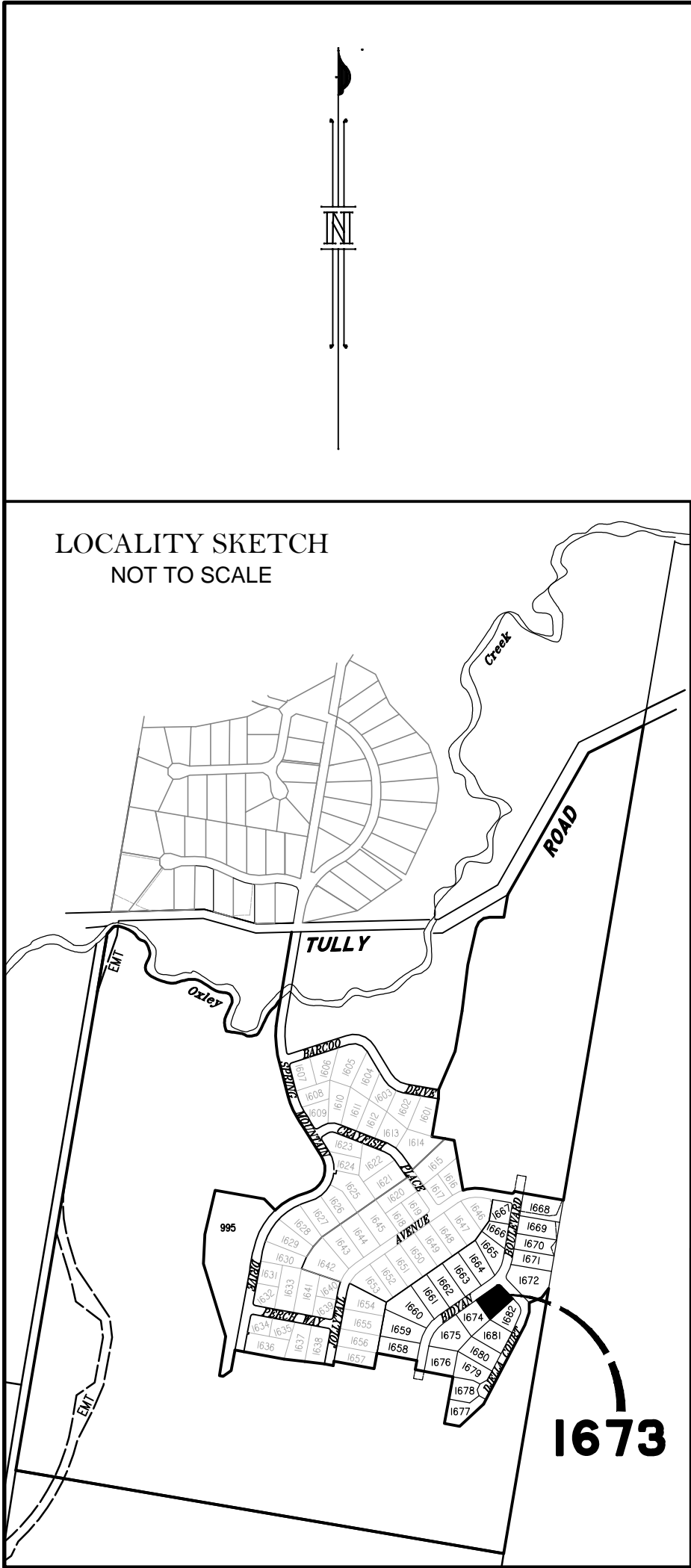
Suite 206,
Helensvale Professional Centre
3 Sir John Overall Dr.,
Helensvale QLD 4212.

Ph.: (07) 5573 6744
Fax: (07) 5573 6755
Mob.: 0413 945 959
EMAIL: mail@ssq.net.au

DRAWN	DATE	CHECKED	DATE
KDC	9.3.2017	BVD	7.4.2017

SCALE: A3
1:600

DWG. NO.
15159-07C-1672



LEGEND

Final surface contours based on A.H.D datum at an interval of 0.5m, shown as: —24.0—

Natural surface contours in undisturbed areas at an interval of 1.0m shown: —24.0—

Where applicable, areas to be filled from natural surface are shown as: —24.0—

Depth of Fill + (24.0)

Easement for Drainage EMT

Earthworks Batter

Drainage Line

Drainage Pit

Drainage Gully Pit

Drainage MH

Water Line

Water Conduit

Water Service Point of Entry

Water Stop Valve

Fire Hydrant

Kerb/Kerb & Channel

Road Centreline

Building Envelope in accordance with Approved Building Envelope Plan 7081 P 06 BE A (RL/44/2008/B) received 25/05/16 by Saunders Havill Group Pty Ltd

Q100 Flood Line

DISCLOSURE PLAN
FOR PROPOSED LOT 1673
SPRING MOUNTAIN
STAGE 16C

Proposed Lot 1673 is described as part of Lot 503 on SP290583 currently part of Lot 37 on S311685

Locality of NEW BEITH

I, Kenneth William BURNETT *, certify that the details shown on this sketch plan are correct.

[Signature] 7.4.2017
Date

* of Schlencker Surveying (Qld) Pty. Ltd.
A.C.N. 063 830 642

IMPORTANT NOTES:

This plan has been prepared for PEET Pty Ltd for the purposes of disclosure under the Land Sales Act. It is not to be used by any other person/s or corporation/s or for any other purpose/s.

All areas and dimension are subject to final survey and relevant authority approval. Ancillary information such as services, streetscaping, banks, batters, retaining walls, fencing, footpaths & building envelopes are indicative only and are subject to relevant authority approvals and construction.

Levels and Contours shown are not to be used for building design or construction. A site survey is required.

Compaction of all fill shown on this plan will be inspected & tested to Level 1 in accordance with AS 3798-2007 except as noted heron.

These notes form an integral part of this plan and no part of this plan may be reproduced in whole or in part without these notes.

AMENDMENTS

DESCRIPTION	DATE
C Fill Area Amended	8.5.17

SCHLENCKER SURVEYING (QLD)
Gold Coast ♦ Brisbane ♦ Rockhampton

Consultants in Surveying, Mapping & Development

A.B.N. 36 909 833 411
PO Box 41,
Helensvale QLD 4212.

Suite 206,
Helensvale Professional Centre
3 Sir John Overall Dr.,
Helensvale QLD 4212.

Ph.: (07) 5573 6744
Fax: (07) 5573 6755
Mob.: 0413 945 959
EMAIL: mail@ssq.net.au

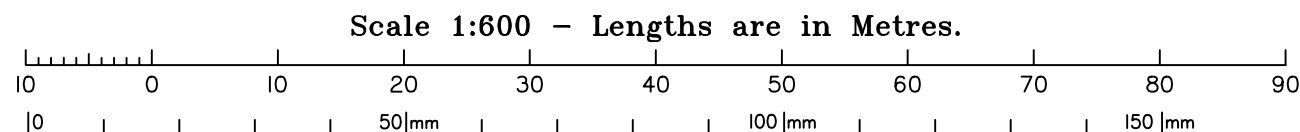
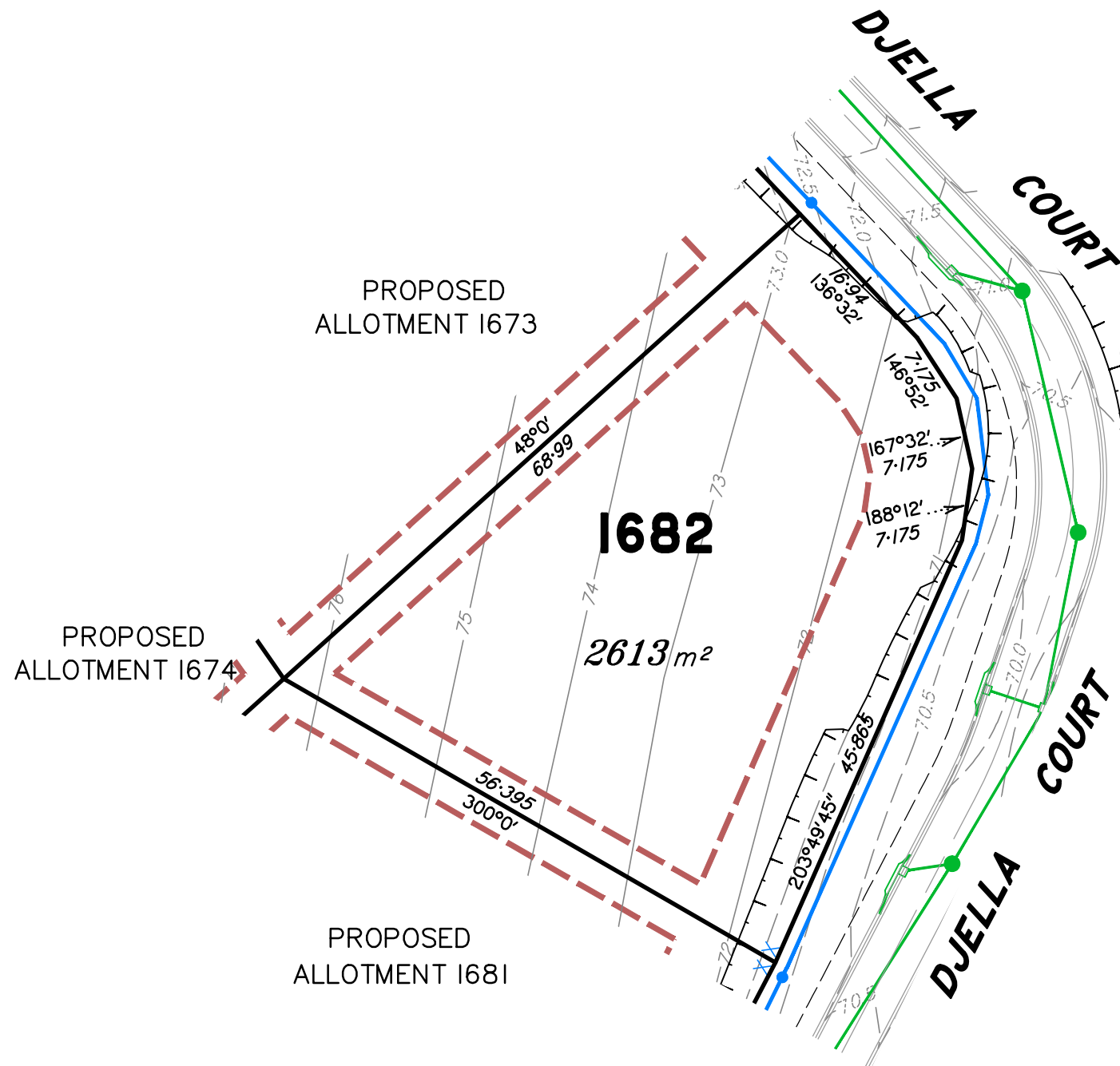
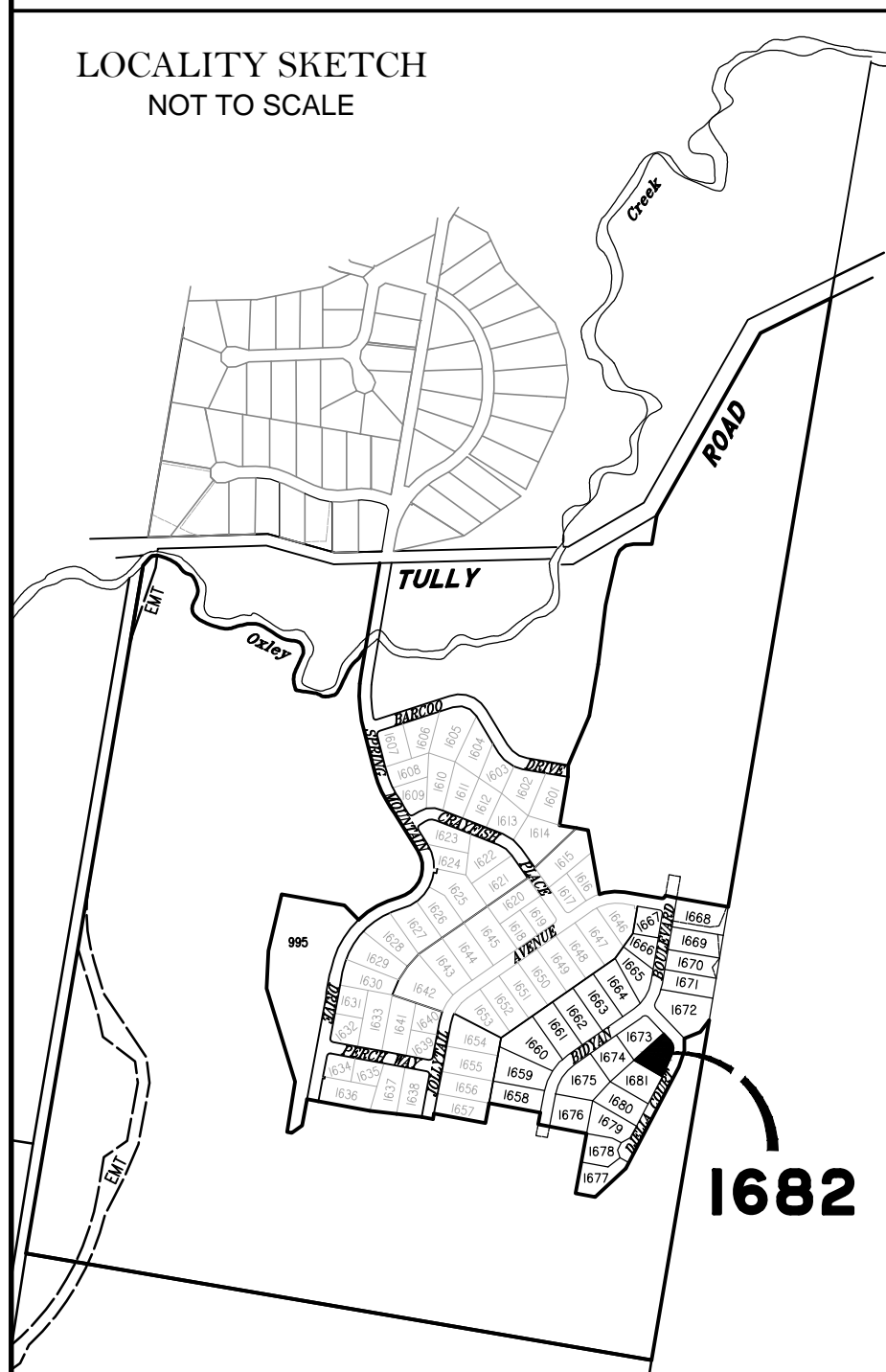
DRAWN	DATE	CHECKED	DATE
KDC	9.3.2017	BVD	7.4.2017

SCALE A3
1:600

DWG. NO.
15159-07C-1673



LOCALITY SKETCH
NOT TO SCALE



LEGEND

Final surface contours based on A.H.D datum at an interval of 0.5m, shown as: —24.0—

Natural surface contours in undisturbed areas at an interval of 1.0m shown: —24.0—

Where applicable, areas to be filled from natural surface are shown as:

Depth of Fill + (24.0)

Easement for Drainage EMT

Earthworks Batter

Drainage Line

Drainage Pit

Drainage Gully Pit

Drainage MH

Water Line

Water Conduit

Water Service Point of Entry

Water Stop Valve

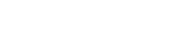
Fire Hydrant

Kerb/Kerb & Channel

Road Centreline

Building Envelope in accordance with Approved Building Envelope Plan 7081 P 06 BE A (RL/44/2008/B) received 25/05/16 by Saunders Havill Group Pty Ltd

Q100 Flood Line



DISCLOSURE PLAN
FOR PROPOSED LOT 1682
SPRING MOUNTAIN
STAGE 16C

Proposed Lot 1682 is described as
part of Lot 503 on SP290583
currently part of Lot 37 on S311685

Locality of NEW BEITH

I, Kenneth William BURNETT *, certify
that the details shown on this sketch
plan are correct.

7.4.2017

Date

* of Schlencker Surveying (Qld) Pty. Ltd.
A.C.N. 063 830 642

IMPORTANT NOTES:

This plan has been prepared for PEET Pty Ltd
for the purposes of disclosure under the Land
Sales Act. It is not to be used by any other
person/s or corporation/s or for any other
purpose/s.

All areas and dimension are subject to final
survey and relevant authority approval.
Ancillary information such as services,
streetscaping, banks, batters, retaining walls,
fencing, footpaths & building envelopes are
indicative only and are subject to relevant
authority approvals and construction.

Levels and Contours shown are not to be
used for building design or construction.
A site survey is required.

Compaction of all fill shown on this plan will
be inspected & tested to Level 1 in
accordance with AS 3798-2007 except as
noted heron.

These notes form an integral part of this plan
and no part of this plan may be reproduced in
whole or in part without these notes.

AMENDMENTS

DESCRIPTION	DATE
C Fill Area Amended	8.5.17

SCHLENCKER SURVEYING (QLD)
Gold Coast ♦ Brisbane ♦ Rockhampton

Consultants in Surveying,
Mapping & Development



A.B.N. 36 909 833 411
PO Box 41,
Helensvale QLD 4212.

Suite 206,
Helensvale Professional Centre
3 Sir John Overall Dr.,
Helensvale QLD 4212.

Ph.: (07) 5573 6744
Fax: (07) 5573 6755
Mob.: 0413 945 959
EMAIL: mail@ssq.net.au

DRAWN	DATE	CHECKED	DATE
KDC	9.3.2017	BVD	7.4.2017
SCALE A3	1:600	DWG. NO.	15159-07C-1682