

# LEGEND

Retaining Wall shown as:-

Sewer line

Sewer Manhole

Rooftwater Drainage line and Catch Pit

Stormwater Drainage Line

Stormwater Manhole

Stormwater Pit

Water Main

Water Conduit

Water Service Point of Entry

Underground Electricity, Street Light,

Electricity Pillar & NBN

Developer Fencing

Concrete Pathway

Zero Setback Building Line

Proposed Services Easement

Indicative Parking Access Location

Indicative Building Envelope

Landscape Street Tree

Retaining Wall

Sewer line

Sewer Manhole

Rooftwater Drainage line and Catch Pit

Stormwater Drainage Line

Stormwater Manhole

Stormwater Pit

Water Main

Water Conduit

Water Service Point of Entry

Underground Electricity, Street Light,

Electricity Pillar & NBN

Developer Fencing

Concrete Pathway

Zero Setback Building Line

Proposed Services Easement

Indicative Parking Access Location

Indicative Building Envelope

Landscape Street Tree

Retaining Wall

Sewer line

Sewer Manhole

Rooftwater Drainage line and Catch Pit

Stormwater Drainage Line

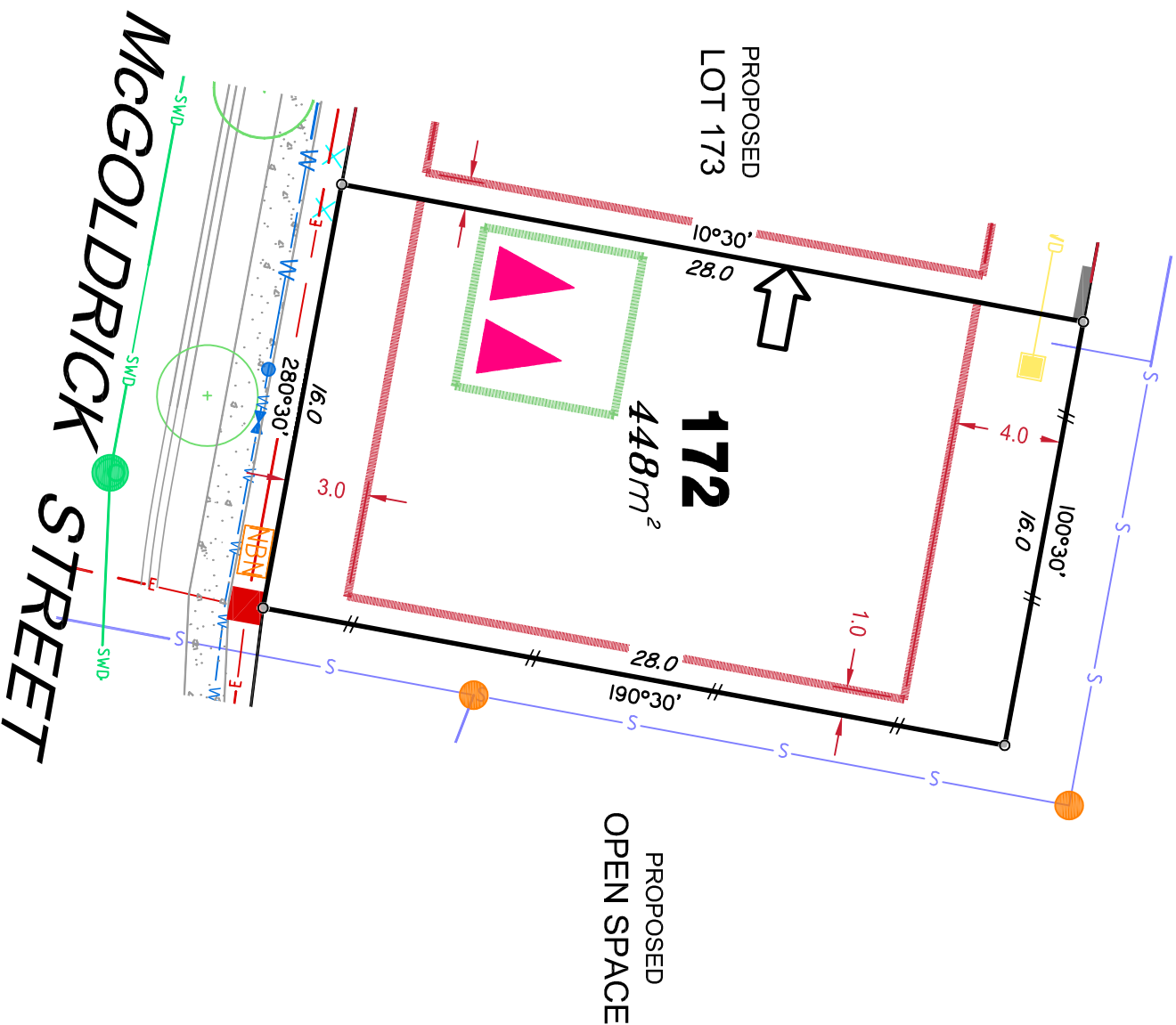
Stormwater Manhole

Stormwater Pit

Water Main

Water Conduit

Water Service Point of Entry



## ADDITIONAL NOTES:

Allotments used as Multiple Residential Allotments in accordance with the approved Plan of Development may have a reduced primary road setback to 3.0metres as noted on the Plan of Development Table.

Compaction of any fill material placed on this site shall be completed to level one inspection and testing services in accordance with AS3798-2007.

Location of sewer, roofwater, stormwater, water reticulation and electricity lines, manholes and pits are those shown on engineering design drawings, supplied by Bradlees Weinhardt, and may differ from the as-constructed location.

Plan of Development information Supplied by RPS Group PLC.

Copyright © Queensland Surveying Pty Ltd a Veris Company  
February 2017.

1. **Introduction**  
 2. **Methodology**  
 3. **Results**  
 4. **Discussion**  
 5. **Conclusion**  
 6. **References**  
 7. **Appendix**  
 8. **Index**  
 9. **Glossary**  
 10. **Notes**  
 11. **Footnotes**  
 12. **Endnotes**  
 13. **Supplementary Material**  
 14. **Tables**  
 15. **Figures**  
 16. **Equations**  
 17. **Formulas**  
 18. **Diagrams**  
 19. **Charts**  
 20. **Graphs**  
 21. **Tables**  
 22. **Figures**  
 23. **Equations**  
 24. **Formulas**  
 25. **Diagrams**  
 26. **Charts**  
 27. **Graphs**  
 28. **Tables**  
 29. **Figures**  
 30. **Equations**  
 31. **Formulas**  
 32. **Diagrams**  
 33. **Charts**  
 34. **Graphs**  
 35. **Tables**  
 36. **Figures**  
 37. **Equations**  
 38. **Formulas**  
 39. **Diagrams**  
 40. **Charts**  
 41. **Graphs**  
 42. **Tables**  
 43. **Figures**  
 44. **Equations**  
 45. **Formulas**  
 46. **Diagrams**  
 47. **Charts**  
 48. **Graphs**  
 49. **Tables**  
 50. **Figures**  
 51. **Equations**  
 52. **Formulas**  
 53. **Diagrams**  
 54. **Charts**  
 55. **Graphs**  
 56. **Tables**  
 57. **Figures**  
 58. **Equations**  
 59. **Formulas**  
 60. **Diagrams**  
 61. **Charts**  
 62. **Graphs**  
 63. **Tables**  
 64. **Figures**  
 65. **Equations**  
 66. **Formulas**  
 67. **Diagrams**  
 68. **Charts**  
 69. **Graphs**  
 70. **Tables**  
 71. **Figures**  
 72. **Equations**  
 73. **Formulas**  
 74. **Diagrams**  
 75. **Charts**  
 76. **Graphs**  
 77. **Tables**  
 78. **Figures**  
 79. **Equations**  
 80. **Formulas**  
 81. **Diagrams**  
 82. **Charts**  
 83. **Graphs**  
 84. **Tables**  
 85. **Figures**  
 86. **Equations**  
 87. **Formulas**  
 88. **Diagrams**  
 89. **Charts**  
 90. **Graphs**  
 91. **Tables**  
 92. **Figures**  
 93. **Equations**  
 94. **Formulas**  
 95. **Diagrams**  
 96. **Charts**  
 97. **Graphs**  
 98. **Tables**  
 99. **Figures**  
 100. **Equations**  
 101. **Formulas**  
 102. **Diagrams**  
 103. **Charts**  
 104. **Graphs**  
 105. **Tables**  
 106. **Figures**  
 107. **Equations**  
 108. **Formulas**  
 109. **Diagrams**  
 110. **Charts**  
 111. **Graphs**  
 112. **Tables**  
 113. **Figures**  
 114. **Equations**  
 115. **Formulas**  
 116. **Diagrams**  
 117. **Charts**  
 118. **Graphs**  
 119. **Tables**  
 120. **Figures**  
 121. **Equations**  
 122. **Formulas**  
 123. **Diagrams**  
 124. **Charts**  
 125. **Graphs**  
 126. **Tables**  
 127. **Figures**  
 128. **Equations**  
 129. **Formulas**  
 130. **Diagrams**  
 131. **Charts**  
 132. **Graphs**  
 133. **Tables**  
 134. **Figures**  
 135. **Equations**  
 136. **Formulas**  
 137. **Diagrams**  
 138. **Charts**  
 139. **Graphs**  
 140. **Tables**  
 141. **Figures**  
 142. **Equations**  
 143. **Formulas**  
 144. **Diagrams**  
 145. **Charts**  
 146. **Graphs**  
 147. **Tables**  
 148. **Figures**  
 149. **Equations**  
 150. **Formulas**  
 151. **Diagrams**  
 152. **Charts**  
 153. **Graphs**  
 154. **Tables**  
 155. **Figures**  
 156. **Equations**  
 157. **Formulas**  
 158. **Diagrams**  
 159. **Charts**  
 160. **Graphs**  
 161. **Tables**  
 162. **Figures**  
 163. **Equations**  
 164. **Formulas**  
 165. **Diagrams**  
 166. **Charts**  
 167. **Graphs**  
 168. **Tables**  
 169. **Figures**  
 170. **Equations**  
 171. **Formulas**  
 172. **Diagrams**  
 173. **Charts**  
 174. **Graphs**  
 175. **Tables**  
 176. **Figures**  
 177. **Equations**  
 178. **Formulas**  
 179. **Diagrams**  
 180. **Charts**  
 181. **Graphs**  
 182. **Tables**  
 183. **Figures**  
 184. **Equations**  
 185. **Formulas**  
 186. **Diagrams**  
 187. **Charts**  
 188. **Graphs**  
 189. **Tables**  
 190. **Figures**  
 191. **Equations**  
 192. **Formulas**  
 193. **Diagrams**  
 194. **Charts**  
 195. **Graphs**  
 196. **Tables**  
 197. **Figures**  
 198. **Equations**  
 199. **Formulas**  
 200. **Diagrams**  
 201. **Charts**  
 202. **Graphs**  
 203. **Tables**  
 204. **Figures**  
 205. **Equations**  
 206. **Formulas**  
 207. **Diagrams**  
 208. **Charts**  
 209. **Graphs**  
 210. **Tables**  
 211. **Figures**  
 212. **Equations**  
 213. **Formulas**  
 214. **Diagrams**  
 215. **Charts**  
 216. **Graphs**  
 217. **Tables**  
 218. **Figures**  
 219. **Equations**  
 220. **Formulas**  
 221. **Diagrams**  
 222. **Charts**  
 223. **Graphs**  
 224. **Tables**  
 225. **Figures**  
 226. **Equations**  
 227. **Formulas**  
 228. **Diagrams**  
 229. **Charts**  
 230. **Graphs**  
 231. **Tables**  
 232. **Figures**  
 233. **Equations**  
 234. **Formulas**  
 235. **Diagrams**  
 236. **Charts**  
 237. **Graphs**  
 238. **Tables**  
 239. **Figures**  
 240. **Equations**  
 241. **Formulas**  
 242. **Diagrams**  
 243. **Charts**  
 244. **Graphs**  
 245. **Tables**  
 246. **Figures**  
 247. **Equations**  
 248. **Formulas**  
 249. **Diagrams**  
 250. **Charts**  
 251. **Graphs**  
 252.

### Retaining wall shown as:-

**Sewer line**

## NEW! MAILING

## Roowiwateri Drainage Unit and

Calcium Fil

## Stormwater Drainage Line

CUHIIWALEI MAIIIOLE

Columnware Fil

Water Main

Valer Conquitt

Water Service Point of Entry

## Underground Electricity, Street Light,

Electricity Firms &amp; INDIAN

## Developer Fencing

## Concrete Pathway

## Zeit und Raum Building Life

## Communicative Building Envelope

Proposed Services Easement

## Indicative Pairing Access Location

## ADDITIONAL NOISES

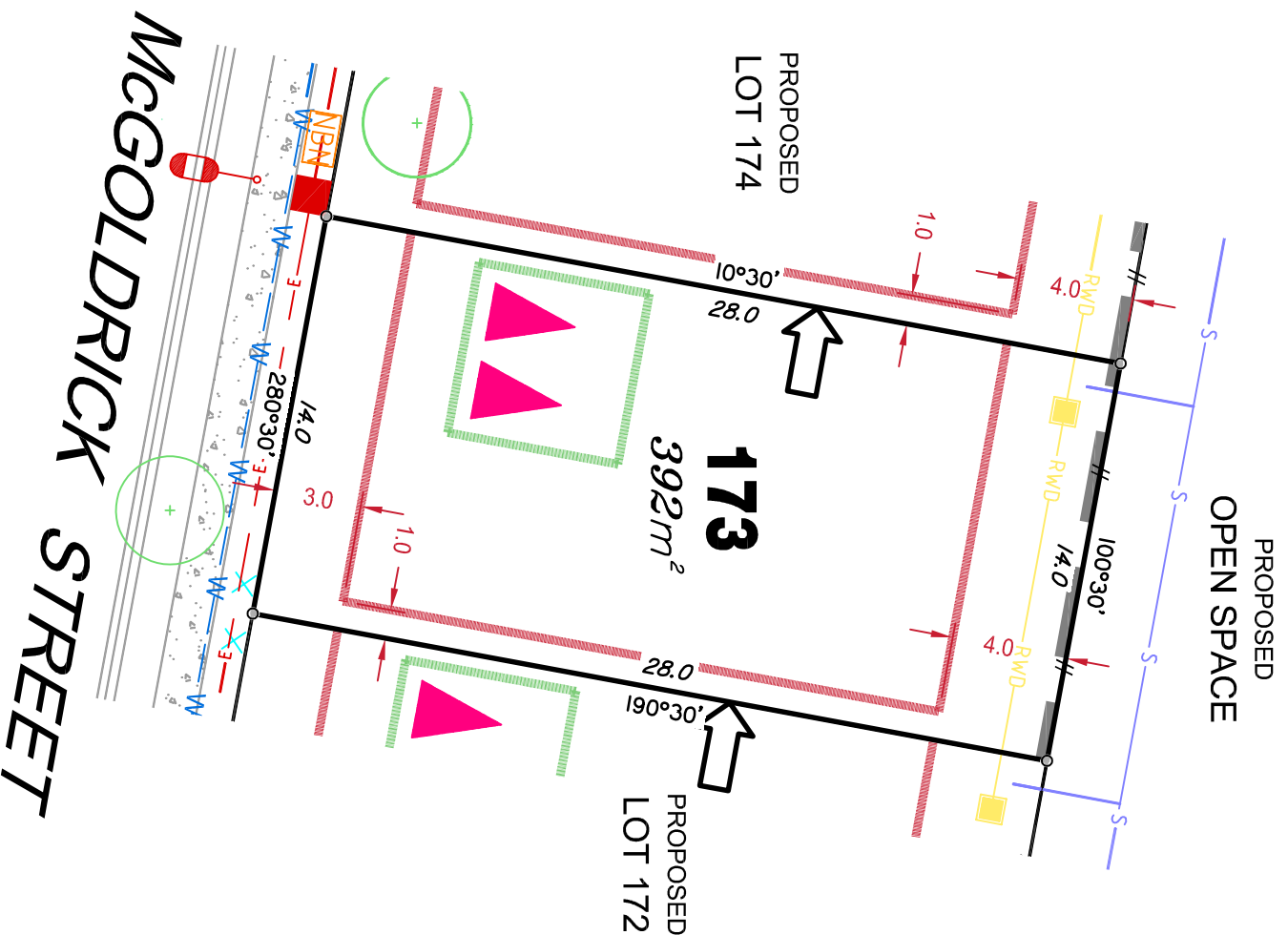
selback to 3.0metres as noted on the Plan of Development Table.

AS3136-2007.

line as-constructed location.

Financial Development Information supplied by NCS Group LLC.

February 2017.



## LEGEND

Retaining Wall shown as:-

Sewer line

## Sewer Manhole

### Roofwater Drainage line and

## Catch Pit

## Stormwater Drainage Line

## Stormwater Manhole

## Stormwater Pit

## Water Main

## Water Conduit

## Water Service Point of Entry

## Underground Electricity, Street Light,

## Electricity Pillar & NBN

## Developer Fencing

## Concrete Pathway

## Zero Setback Building Line

Proposed Services Easement

Indicative Parking Access Location

**ADDITIONAL NOTES:**

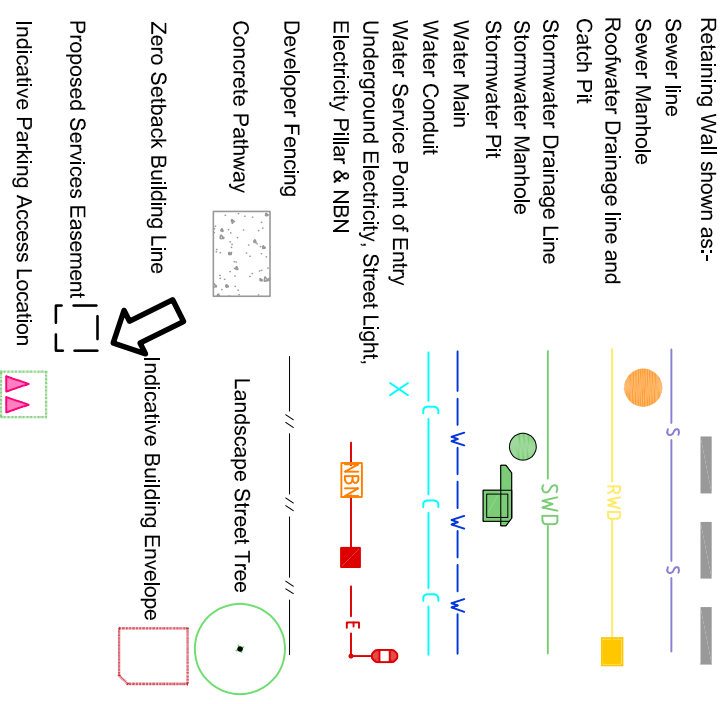
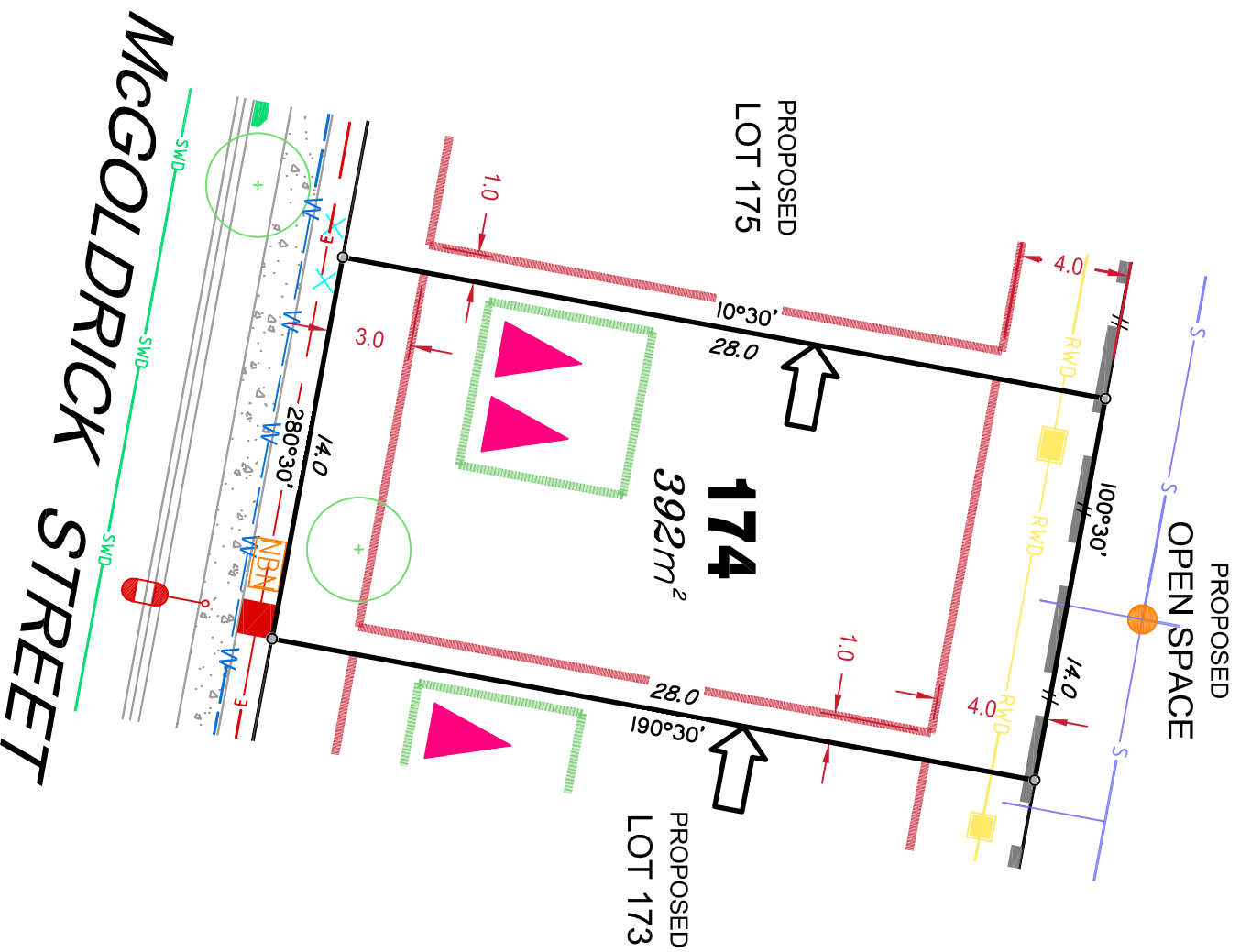
Allotments used as Multiple Residential Allotments in accordance with the approved Plan of Development may have a reduced primary road setback to 3.0metres as noted on the Plan of Development Table.

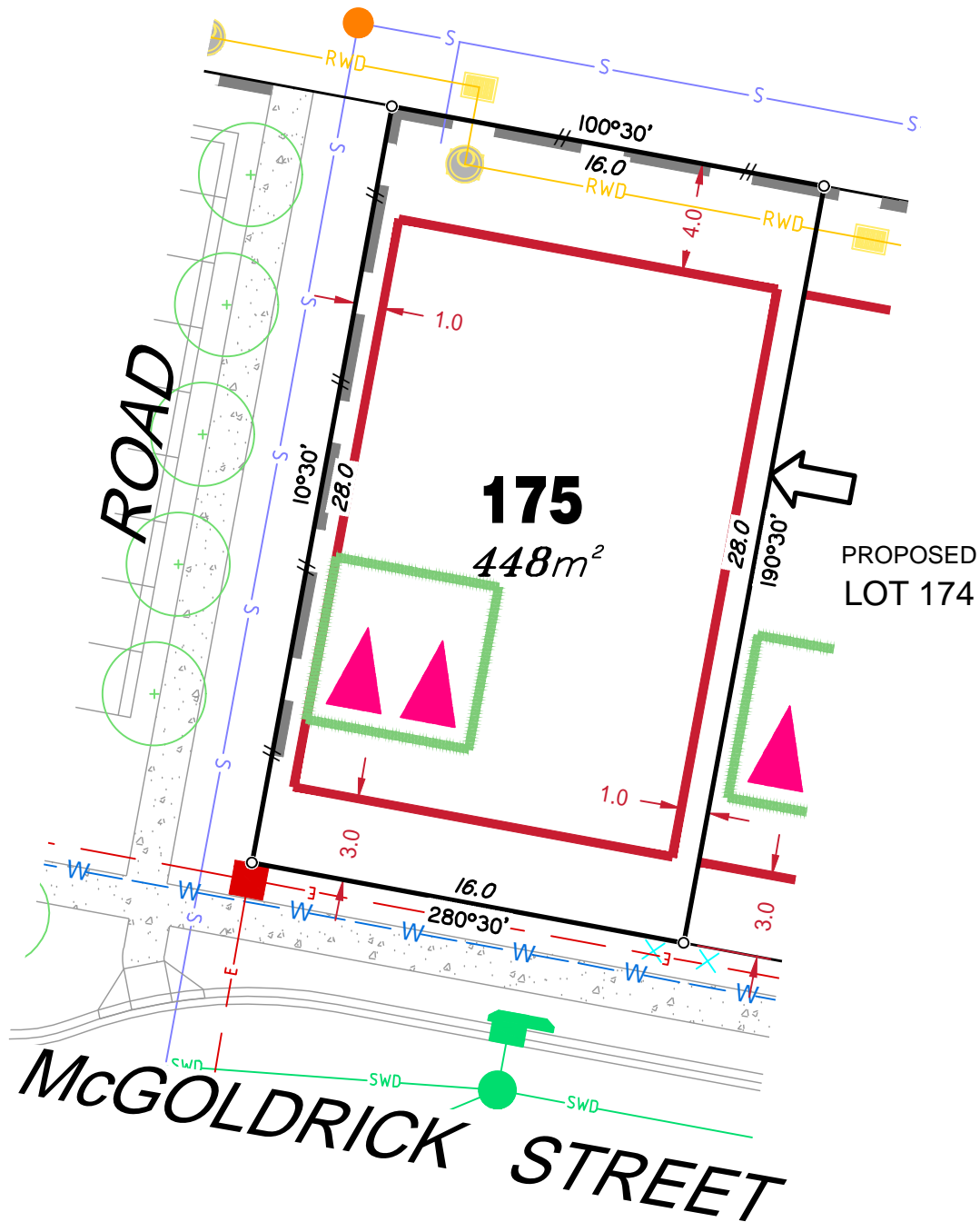
Compaction of any fill material placed on this site shall be completed to level one inspection and testing services in accordance with AS3798-2007.

Location of sewer, rooftop, stormwater, water reticulation and electricity lines, manholes and pits are those shown on engineering design drawings, supplied by Bradlees Meinhardt, and may differ from the as-constructed location.

## Plan of Development information Supplied by RPS Group PLC.

Copyright © Queensland Surveying Pty Ltd a Veris Company  
February 2017.





## LEGEND

Retaining Wall shown as:-

Sewer line

Sewer Manhole

Roofwater Drainage line and Catch Pit

Stormwater Drainage Line

Stormwater Manhole

Stormwater Pit

Water Main

Water Conduit

Water Service Point of Entry

Underground Electricity, Street Light, Electricity Pillar & NBN

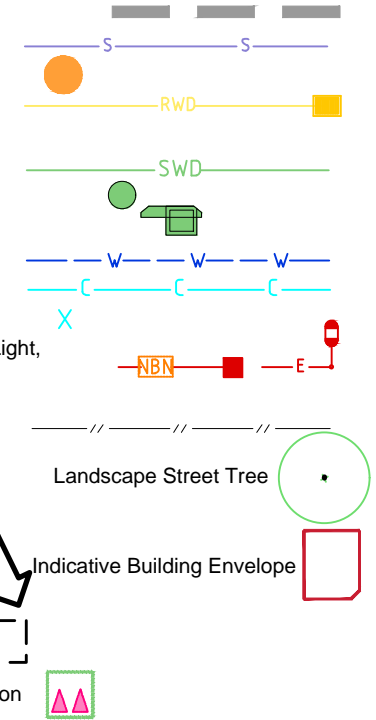
Developer Fencing

Concrete Pathway

Zero Setback Building Line

Proposed Services Easement

Indicative Parking Access Location



## ADDITIONAL NOTES:

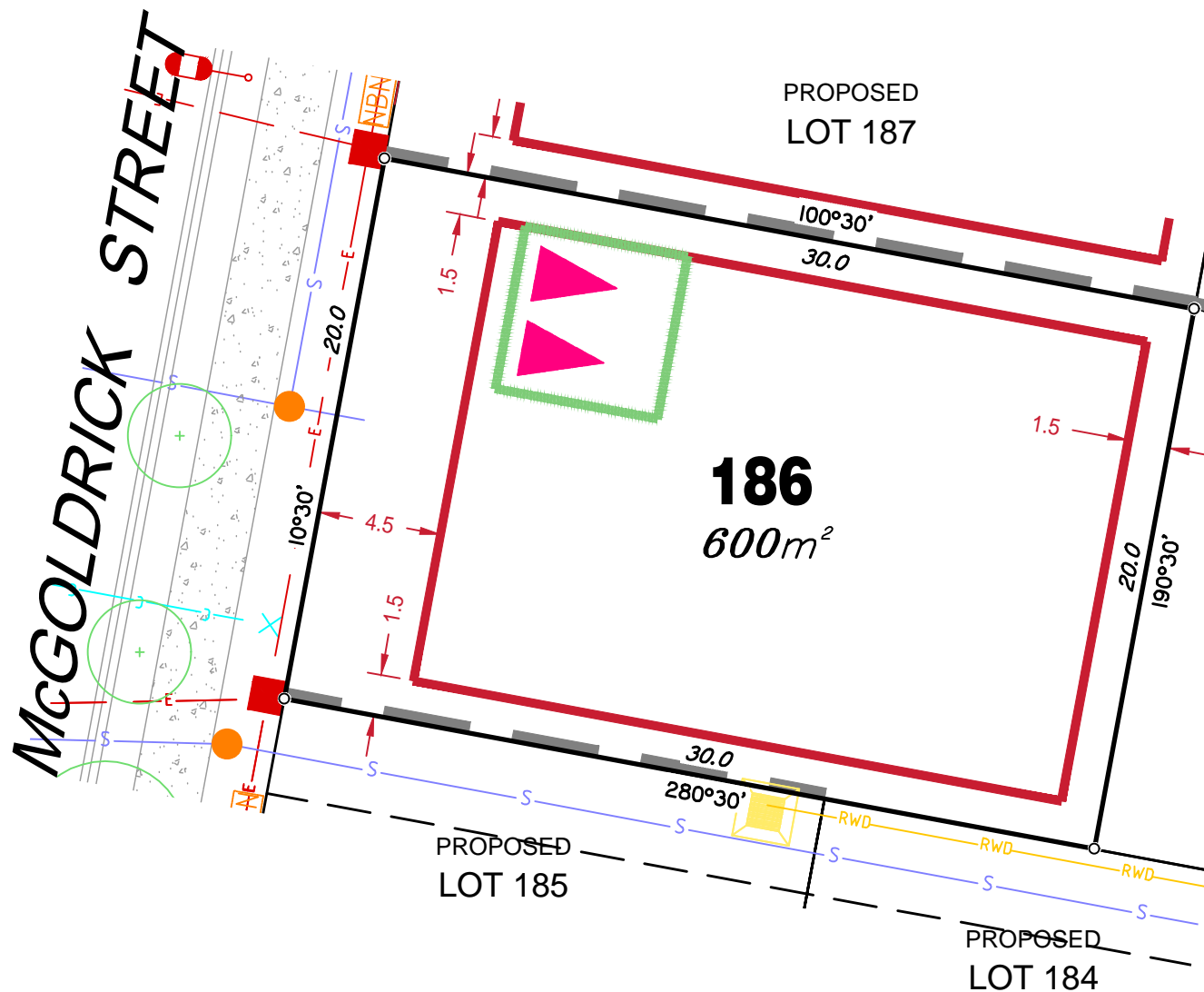
Allotments used as Multiple Residential Allotments in accordance with the approved Plan of Development may have a reduced primary road setback to 3.0metres as noted on the Plan of Development Table.

Compaction of any fill material placed on this site shall be completed to level one inspection and testing services in accordance with AS3798-2007.

Location of sewer, roofwater, stormwater, water reticulation and electricity lines, manholes and pits are those shown on engineering design drawings, supplied by Bradlees Meinhardt, and may differ from the as-constructed location.

Plan of Development information Supplied by RPS Group PLC.

Copyright © Queensland Surveying Pty Ltd a Veris Company  
May 2017.



## LEGEND

Retaining Wall shown as:-

Sewer line

Sewer Manhole

Roofwater Drainage line and  
Catch Pit

Stormwater Drainage Line

Stormwater Manhole

Stormwater Pit

Water Main

Water Conduit

Water Service Point of Entry

Underground Electricity, Street Light,  
Electricity Pillar & NBN

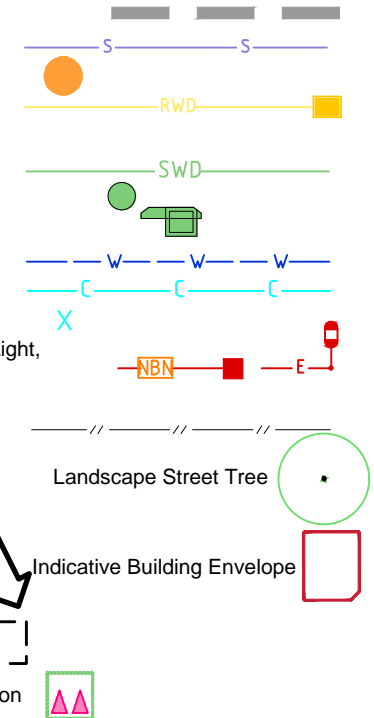
Developer Fencing

Concrete Pathway

Zero Setback Building Line

Proposed Services Easement

Indicative Parking Access Location



## ADDITIONAL NOTES:

Allotments used as Multiple Residential Allotments in accordance with the approved Plan of Development may have a reduced primary road setback to 3.0metres as noted on the Plan of Development Table.

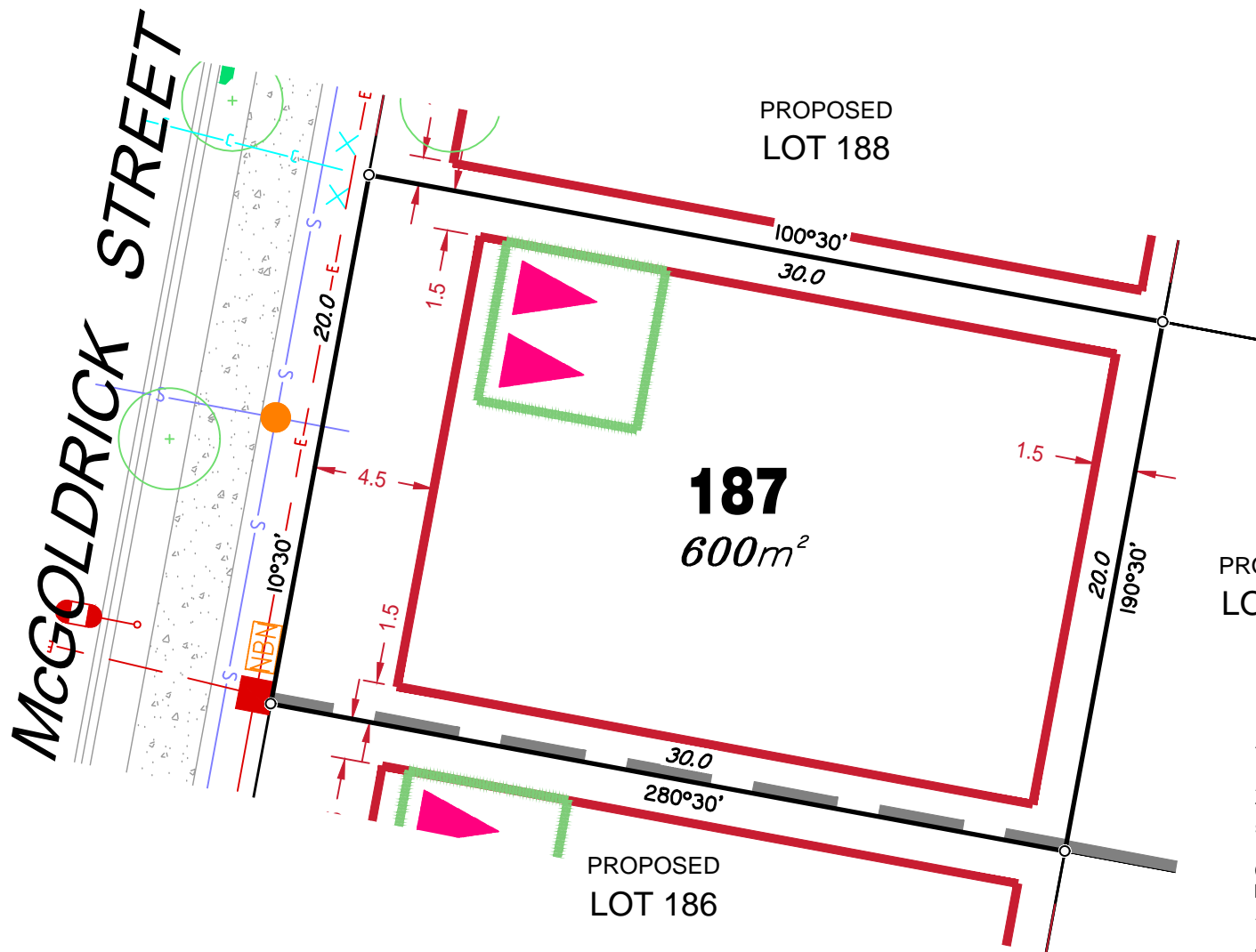
Compaction of any fill material placed on this site shall be completed to level one inspection and testing services in accordance with AS3798-2007.

Location of sewer, roofwater, stormwater, water reticulation and electricity lines, manholes and pits are those shown on engineering design drawings, supplied by Bradlees Meinhardt, and may differ from the as-constructed location.

Plan of Development information Supplied by RPS Group PLC.

Copyright © Queensland Surveying Pty Ltd a Veris Company  
May 2017.

**McGOLDRICK STREET**



## LEGEND

Retaining Wall shown as:-

Sewer line

Sewer Manhole

Roofwater Drainage line and Catch Pit

Stormwater Drainage Line

Stormwater Manhole

Stormwater Pit

Water Main

Water Conduit

Water Service Point of Entry

Underground Electricity, Street Light, Electricity Pillar & NBN

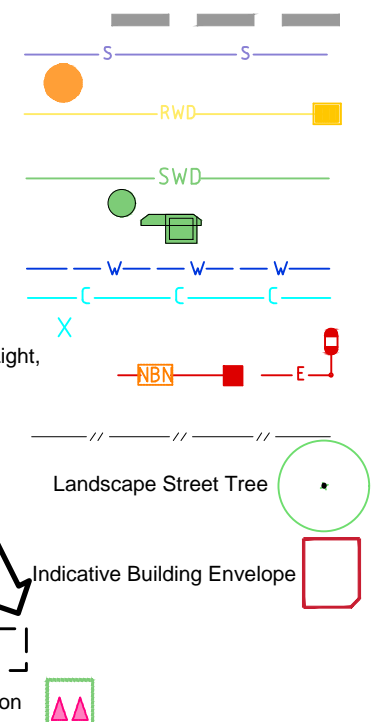
Developer Fencing

Concrete Pathway

Zero Setback Building Line

Proposed Services Easement

Indicative Parking Access Location



PROPOSED  
LOT 181

## ADDITIONAL NOTES:

Allotments used as Multiple Residential Allotments in accordance with the approved Plan of Development may have a reduced primary road setback to 3.0metres as noted on the Plan of Development Table.

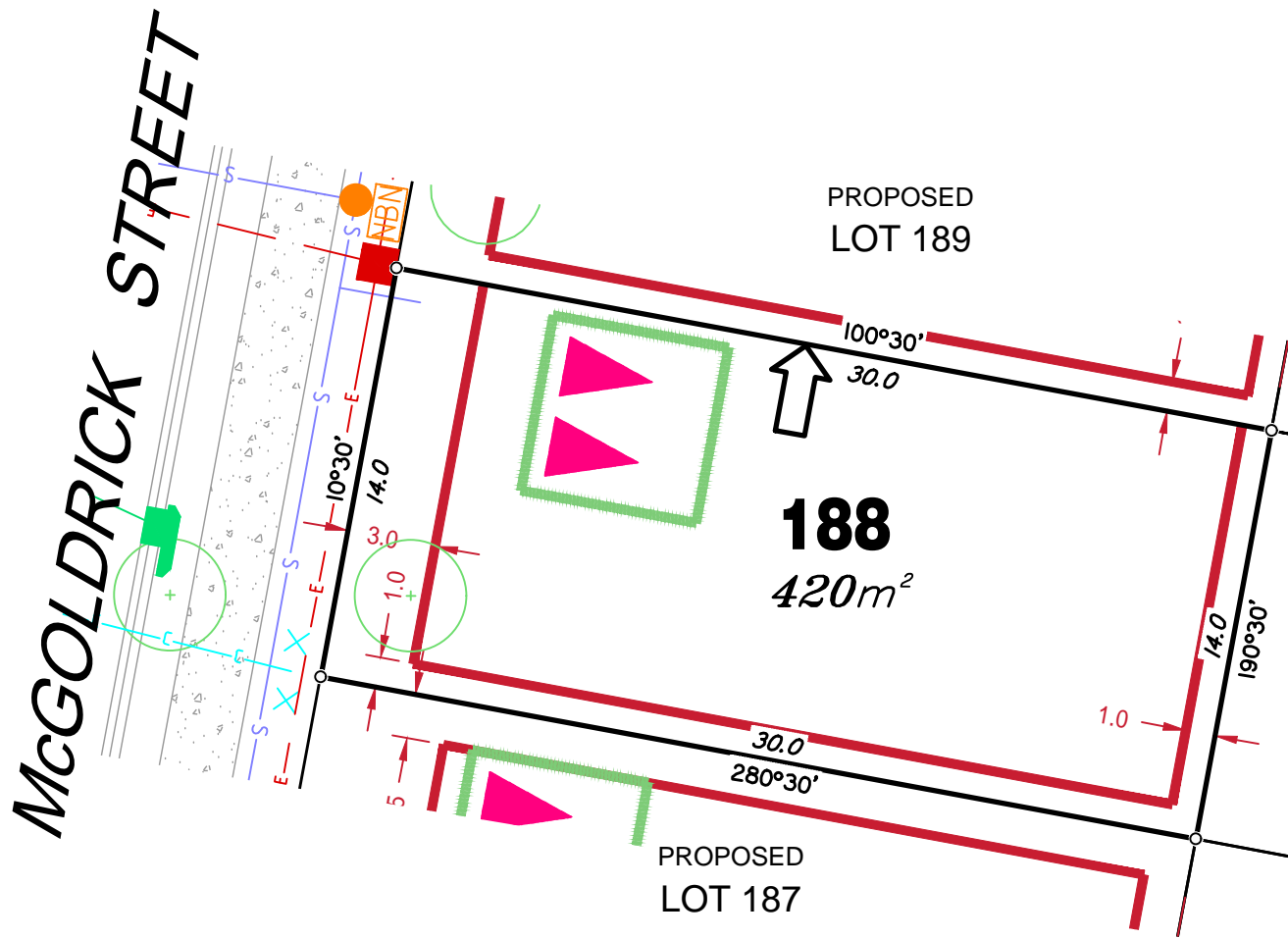
Compaction of any fill material placed on this site shall be completed to level one inspection and testing services in accordance with AS3798-2007.

Location of sewer, roofwater, stormwater, water reticulation and electricity lines, manholes and pits are those shown on engineering design drawings, supplied by Bradlees Meinhardt, and may differ from the as-constructed location.

Plan of Development information Supplied by RPS Group PLC.

Copyright © Queensland Surveying Pty Ltd a Veris Company  
May 2017.

McGOLDRICK STREET



## LEGEND

Retaining Wall shown as:-

Sewer line

Sewer Manhole

Roofwater Drainage line and  
Catch Pit

Stormwater Drainage Line

Stormwater Manhole

Stormwater Pit

Water Main

Water Conduit

Water Service Point of Entry

Underground Electricity, Street Light,  
Electricity Pillar & NBN

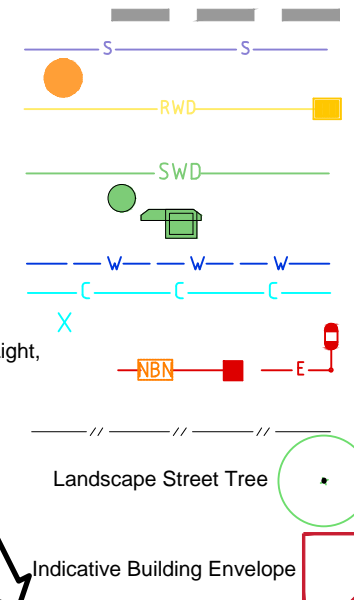
Developer Fencing

Concrete Pathway

Zero Setback Building Line

Proposed Services Easement

Indicative Parking Access Location



PROPOSED  
LOT 180

### ADDITIONAL NOTES:

Allotments used as Multiple Residential Allotments in accordance with the approved Plan of Development may have a reduced primary road setback to 3.0metres as noted on the Plan of Development Table.

Compaction of any fill material placed on this site shall be completed to level one inspection and testing services in accordance with AS3798-2007.

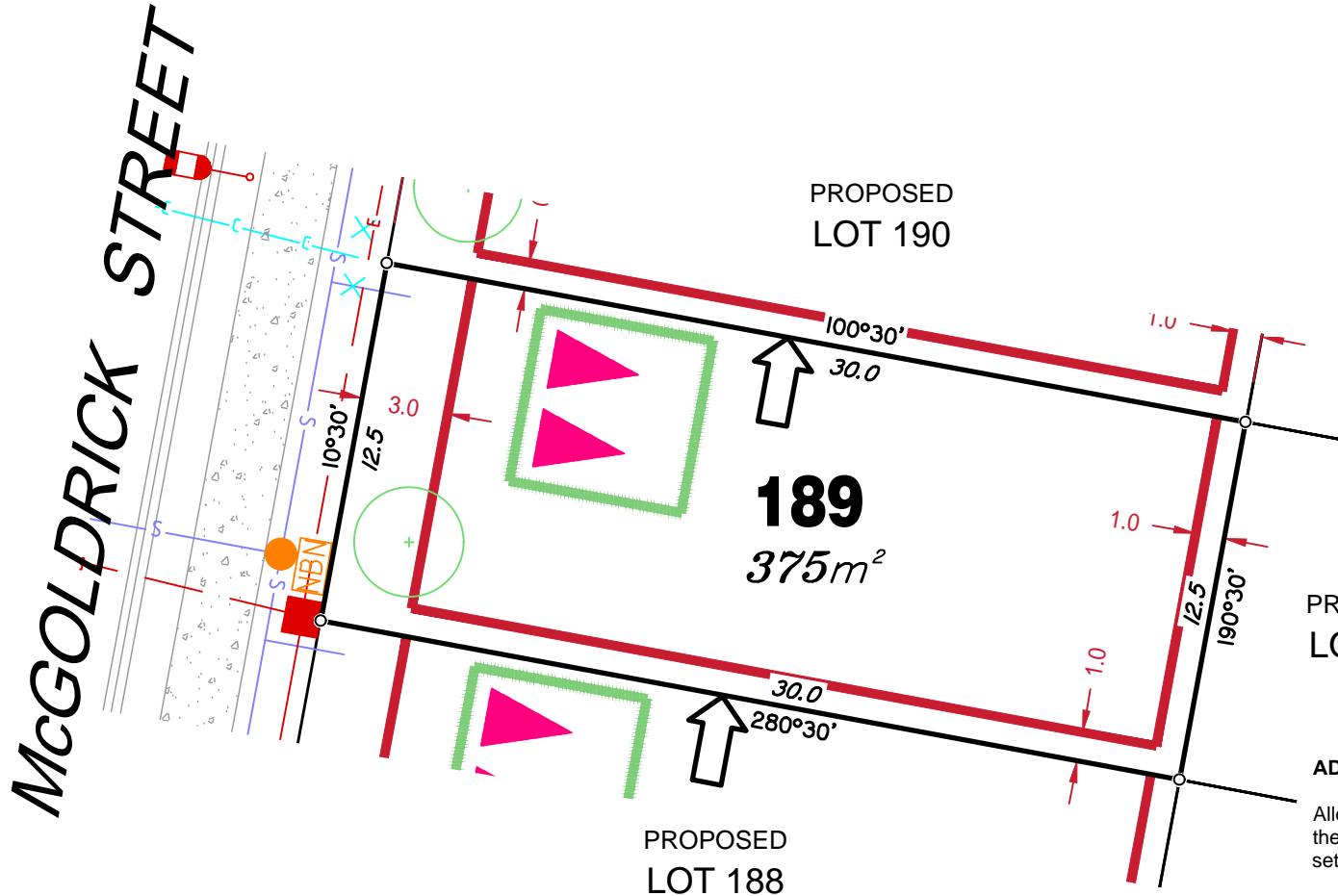
Location of sewer, roofwater, stormwater, water reticulation and electricity lines, manholes and pits are those shown on engineering design drawings, supplied by Bradlees Meinhardt, and may differ from the as-constructed location.

Plan of Development information Supplied by RPS Group PLC.

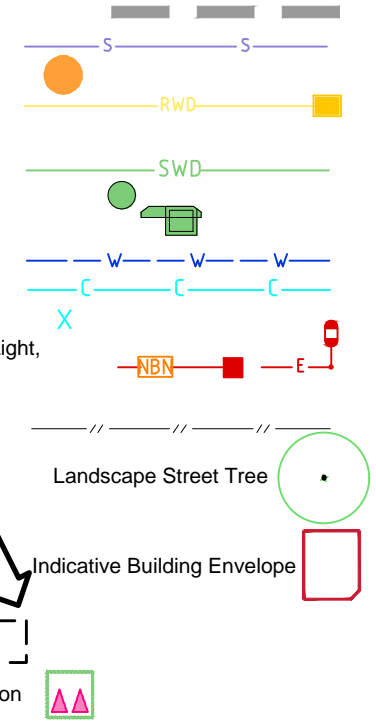
Copyright © Queensland Surveying Pty Ltd a Veris Company  
May 2017.



McGOLDRICK STREET



- Sewer line
- Sewer Manhole
- Roofwater Drainage line and Catch Pit
- Stormwater Drainage Line
- Stormwater Manhole
- Stormwater Pit
- Water Main
- Water Conduit
- Water Service Point of Entry
- Underground Electricity, Street Light, Electricity Pillar & NBN



**ADDITIONAL NOTES:**

Allotments used as Multiple Residential Allotments in accordance with the approved Plan of Development may have a reduced primary road setback to 3.0metres as noted on the Plan of Development Table.

Compaction of any fill material placed on this site shall be completed to level one inspection and testing services in accordance with AS3798-2007.

Location of sewer, roofwater, stormwater, water reticulation and electricity lines, manholes and pits are those shown on engineering design drawings, supplied by Bradlees Meinhardt, and may differ from the as-constructed location.

Plan of Development information Supplied by RPS Group PLC.

Copyright © Queensland Surveying Pty Ltd a Veris Company  
May 2017.



McGOLDRICK STREET

PROPOSED  
LOT 191

**190**  
300m<sup>2</sup>

PROPOSED  
LOT 189

## LEGEND

Retaining Wall shown as:-

Sewer line

Sewer Manhole

Roofwater Drainage line and  
Catch Pit

Stormwater Drainage Line

Stormwater Manhole

Stormwater Pit

Water Main

Water Conduit

Water Service Point of Entry

Underground Electricity, Street Light,

Electricity Pillar & NBN

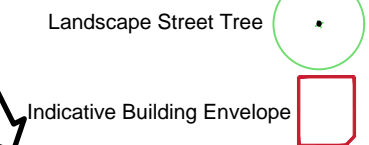
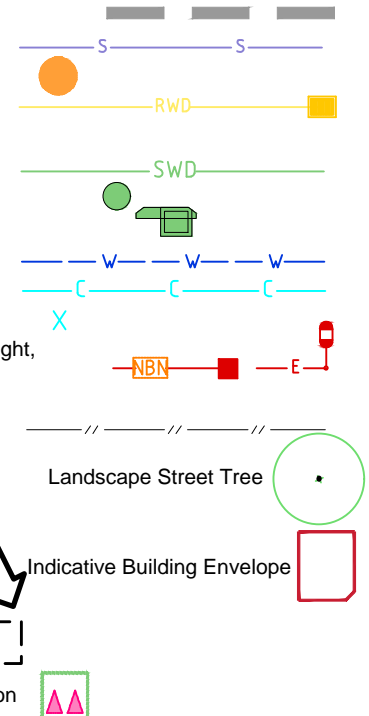
Developer Fencing

Concrete Pathway

Zero Setback Building Line

Proposed Services Easement

Indicative Parking Access Location



PROPOSED  
LOT 178

### ADDITIONAL NOTES:

Allotments used as Multiple Residential Allotments in accordance with the approved Plan of Development may have a reduced primary road setback to 3.0metres as noted on the Plan of Development Table.

Compaction of any fill material placed on this site shall be completed to level one inspection and testing services in accordance with AS3798-2007.

Location of sewer, roofwater, stormwater, water reticulation and electricity lines, manholes and pits are those shown on engineering design drawings, supplied by Bradlees Meinhardt, and may differ from the as-constructed location.

Plan of Development information Supplied by RPS Group PLC.

Copyright © Queensland Surveying Pty Ltd a Veris Company  
May 2017.

# LEGEND

Retaining Wall shown as:-

Sewer line

Sewer Manhole

Rooftwater Drainage line and Catch Pit

Stormwater Drainage Line

Stormwater Manhole

Stormwater Pit

Water Main

Water Conduit

Water Service Point of Entry

Underground Electricity, Street Light,

Electricity Pillar & NBN

Developer Fencing

Concrete Pathway

Zero Setback Building Line

Proposed Services Easement

Indicative Parking Access Location

PROPOSED LOT 177

ADDITIONAL NOTES:

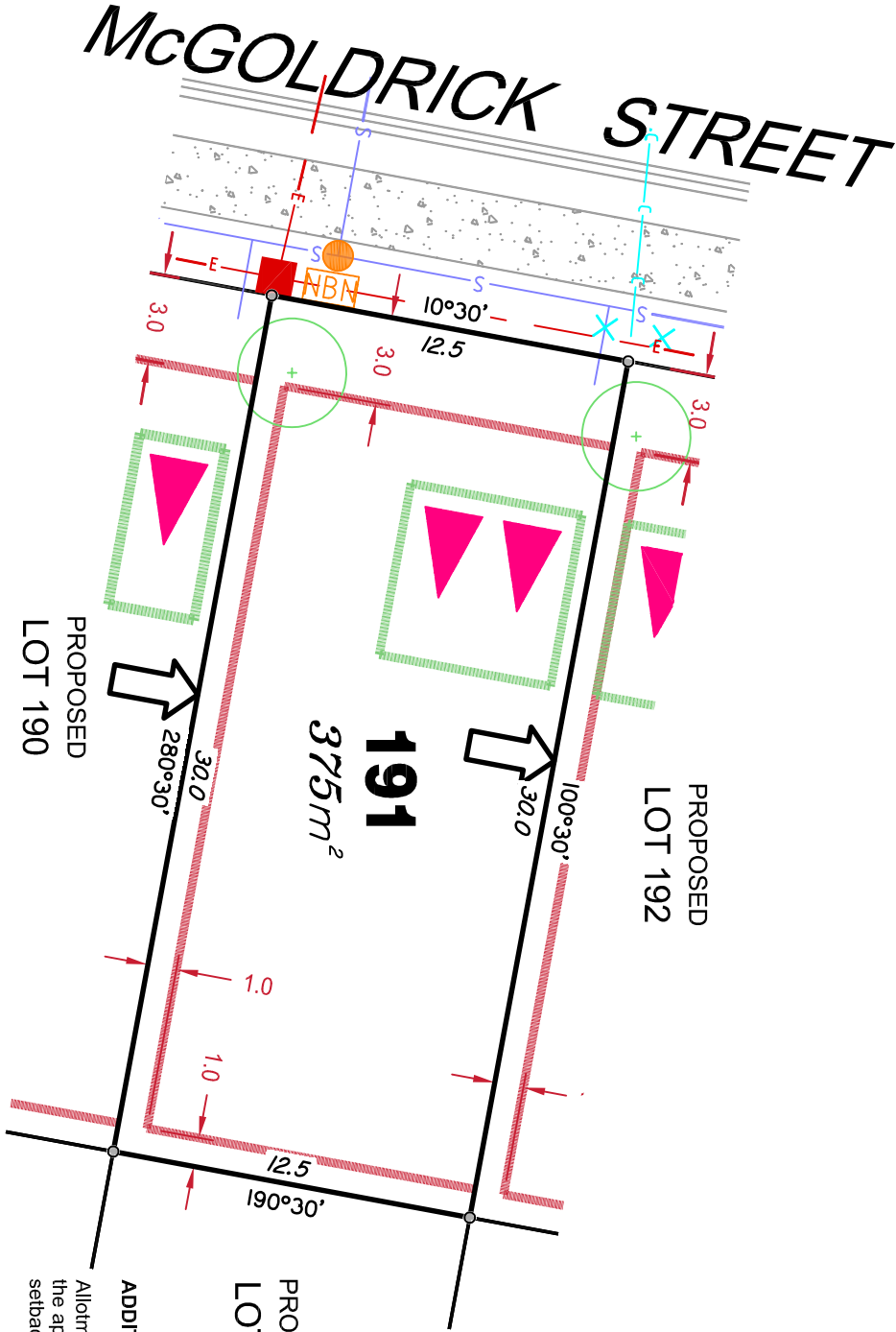
Allotments used as Multiple Residential Allotments in accordance with the approved Plan of Development may have a reduced primary road setback to 3.0metres as noted on the Plan of Development Table.

Compaction of any fill material placed on this site shall be completed to level one inspection and testing services in accordance with AS3798-2007.

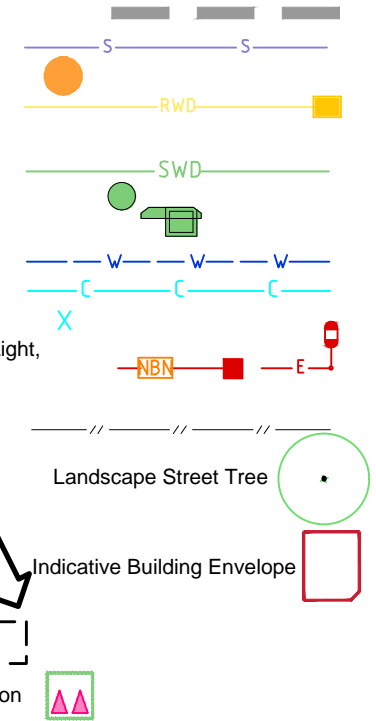
Location of sewer, rooftop, stormwater, water reticulation and electricity lines, manholes and pits are those shown on engineering design drawings, supplied by Bradlees Meinhardt, and may differ from the as-constructed location.

Plan of Development information Supplied by RPS Group PLC.

Copyright © Queensland Surveying Pty Ltd a Veris Company  
February 2017.



Copyright © Queensland Surveying Pty Ltd a Veris Company  
May 2017.



**ADDITIONAL NOTES:**

Allotments used as Multiple Residential Allotments in accordance with the approved Plan of Development may have a reduced primary road setback to 3.0metres as noted on the Plan of Development Table.

Compaction of any fill material placed on this site shall be completed to level one inspection and testing services in accordance with AS3798-2007.

Location of sewer, roofwater, stormwater, water reticulation and electricity lines, manholes and pits are those shown on engineering design drawings, supplied by Bradlees Meinhardt, and may differ from the as-constructed location.

Plan of Development information Supplied by RPS Group PLC.

Copyright © Queensland Surveying Pty Ltd a Veris Company  
May 2017.

**LEGEND**

Retaining Wall shown as:-

Sewer line

Sewer Manhole

Roofwater Drainage line and Catch Pit

Stormwater Drainage Line

Stormwater Manhole

Stormwater Pit

Water Main

Water Conduit

Water Service Point of Entry

Underground Electricity, Street Light, Electricity Pillar & NBN

Developer Fencing

Concrete Pathway

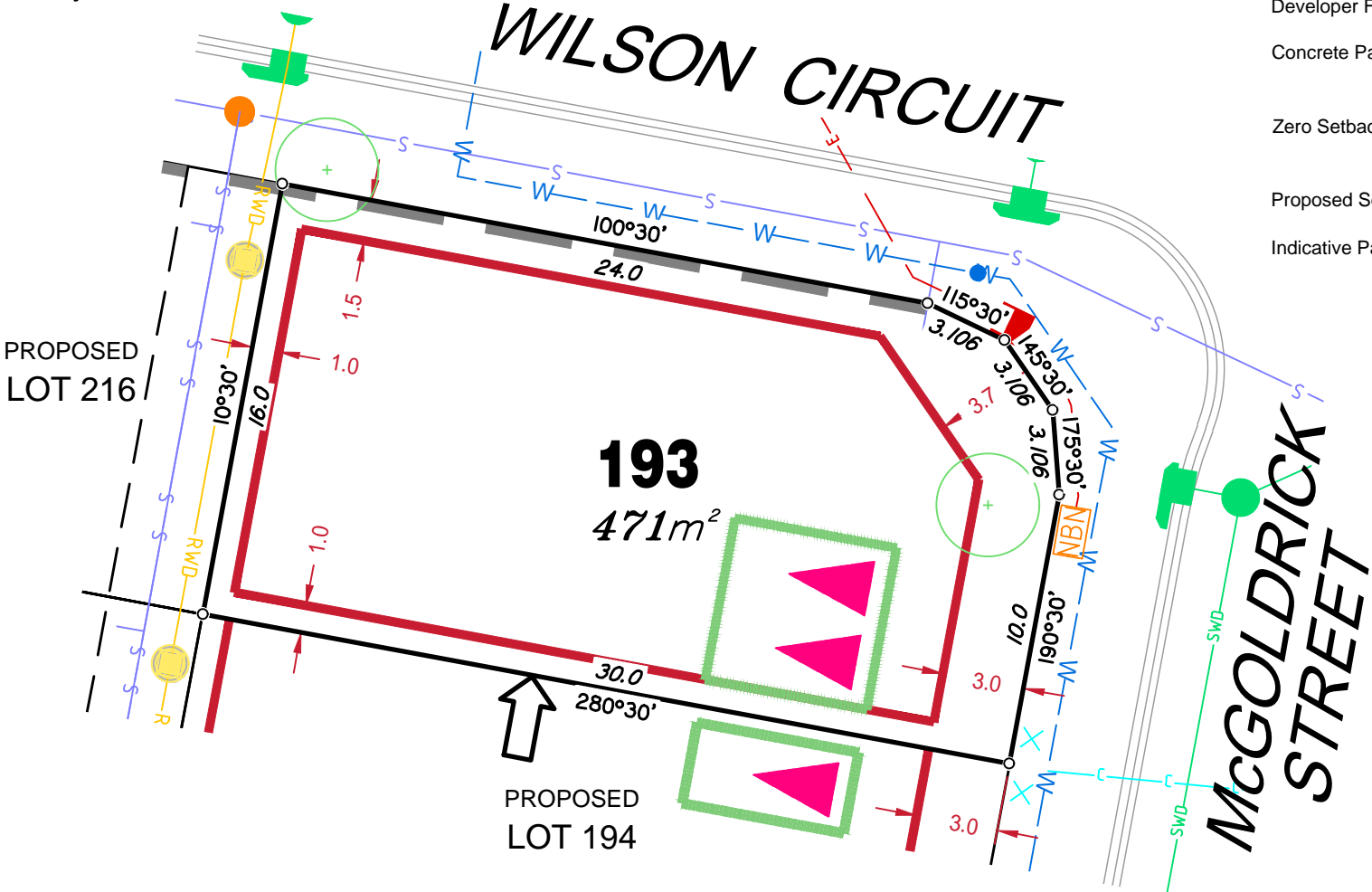
Zero Setback Building Line

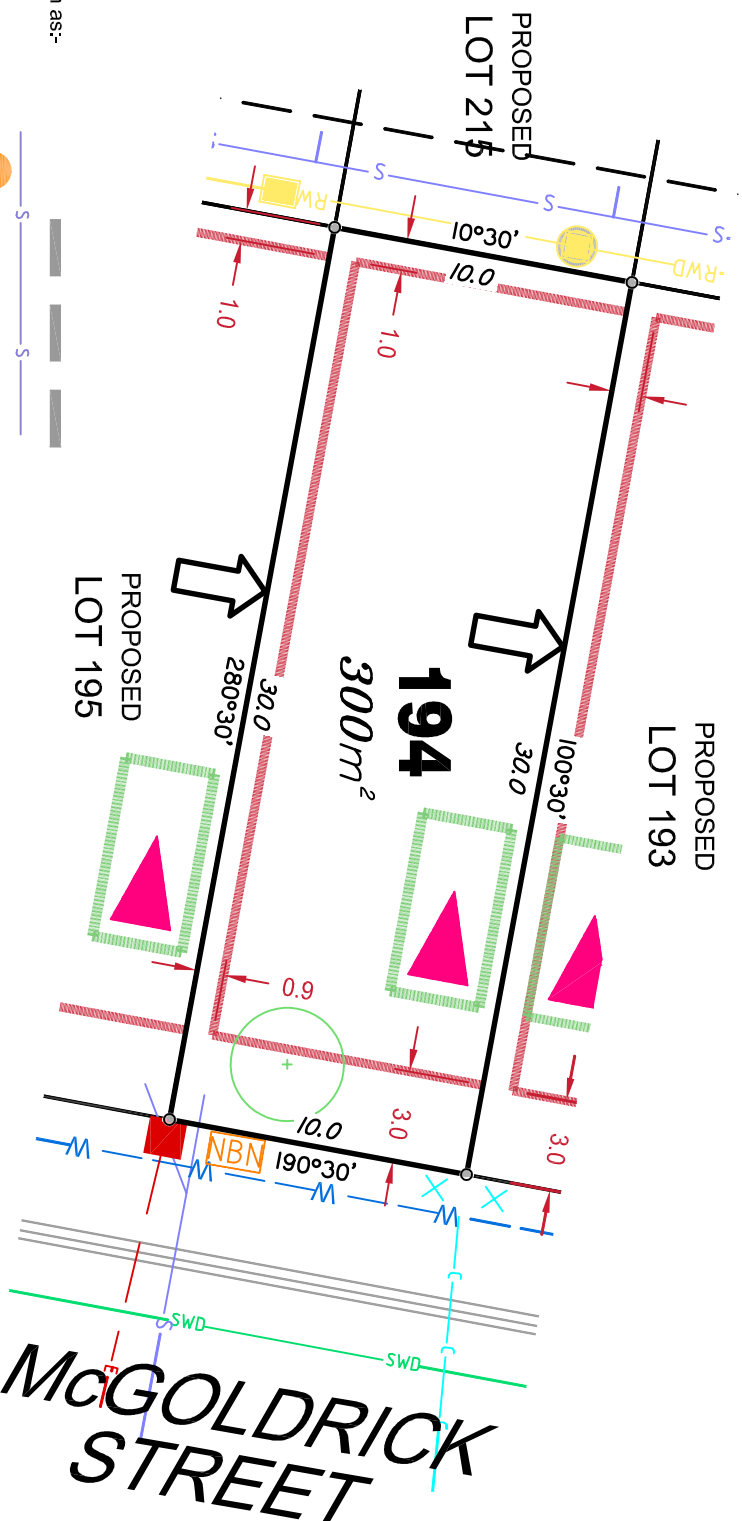
Proposed Services Easement

Indicative Parking Access Location

Indicative Building Envelope

Landscape Street Tree





## LEGEND

Retaining Wall shown as:-

Sewer line

Sewer Manhole

Roofwater Drainage line and Catch Pit

Stormwater Drainage Line

Stormwater Manhole

Stormwater Pit

Water Main

Water Conduit

Water Service Point of Entry

Underground Electricity, Street Light,

Electricity Pillar & NBN

Developer Fencing

Concrete Pathway

Zero Setback Building Line

Proposed Services Easement

Indicative Parking Access Location



Indicative Building Envelope



Indicative Building Envelope



Indicative Building Envelope



Indicative Building Envelope



Indicative Building Envelope



Indicative Building Envelope



Indicative Building Envelope



Indicative Building Envelope



Indicative Building Envelope



Indicative Building Envelope



Indicative Building Envelope



Indicative Building Envelope



Indicative Building Envelope

## ADDITIONAL NOTES:

Allotments used as Multiple Residential Allotments in accordance with the approved Plan of Development may have a reduced primary road setback to 3.0metres as noted on the Plan of Development Table.

Compaction of any fill material placed on this site shall be completed to level one inspection and testing services in accordance with AS3798-2007.

Location of sewer, roofwater, stormwater, water reticulation and electricity lines, manholes and pits are those shown on engineering design drawings, supplied by Bradlees Meinhardt, and may differ from the as-constructed location.

Plan of Development information Supplied by RPS Group PLC.

Copyright © Queensland Surveying Pty Ltd a Veris Company  
February 2017.

## LEGEND

Retaining Wall shown as:-

Sewer line

## Sewer Manhole

Roofwater Drainage line and

## Catch Pit

## Stormwater Drainage Line

## Stormwater Manhole

## Stormwater Pit

## Water Main

## Water Conduit

## Water Service Point of Entry

## Underground Electricity, Street Light,

## Electricity Pillar & NBN

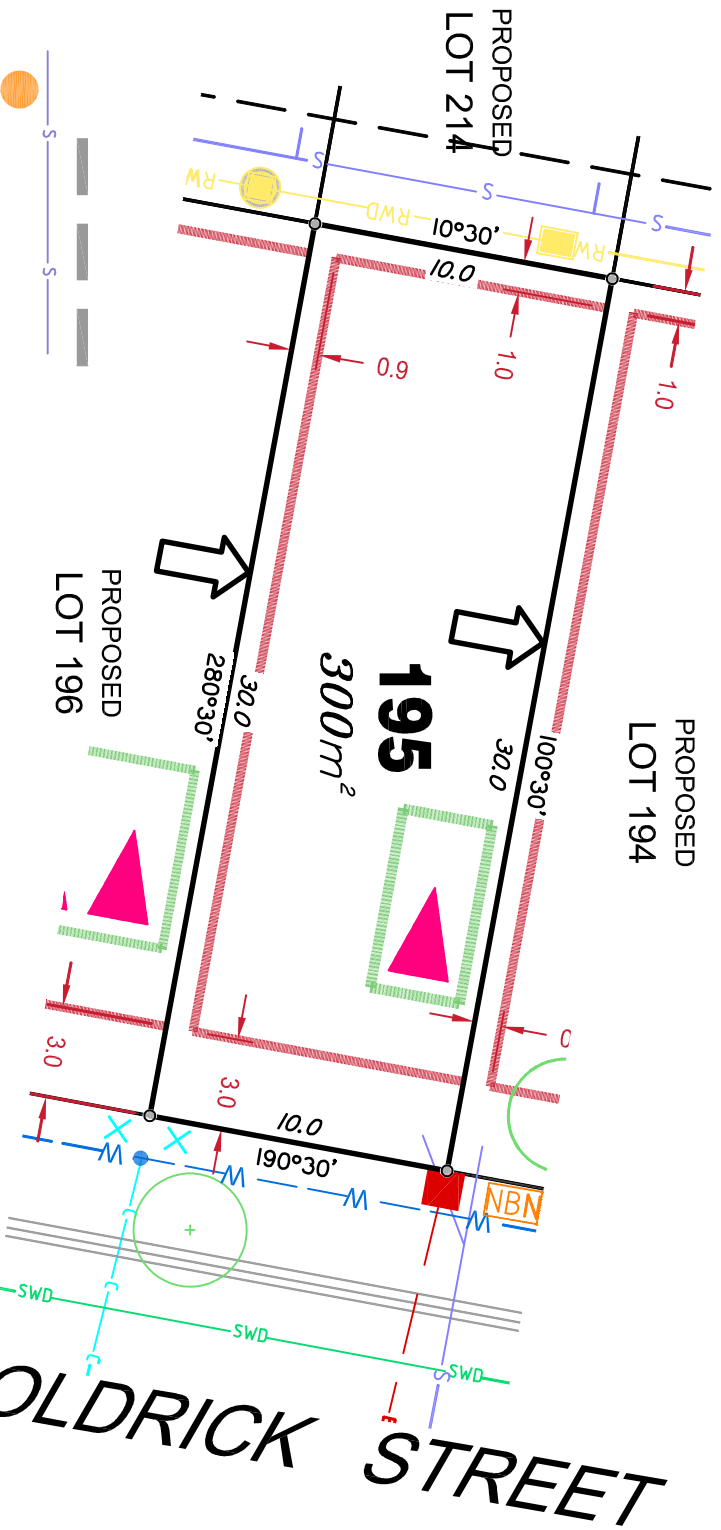
## Developer Fencing

## Concrete Pathway

## Zero Setback Building Line

Proposed Services Easement |

Indicative Parking Access Location



**ADDITIONAL NOTES:**

Allotments used as Multiple Residential Allotments in accordance with the approved Plan of Development may have a reduced primary road setback to 3.0metres as noted on the Plan of Development Table.

Compaction of any fill material placed on this site shall be completed to level one inspection and testing services in accordance with AS3798-2007.

Location of sewer, roofwater, stormwater, water reticulation and electricity lines, manholes and pits are those shown on engineering design drawings, supplied by Bradlees Meinhardt, and may differ from the as-constructed location.

Plan of Development information Supplied by RPS Group PLC.



## LEGEND

Retaining Wall shown as:-

Sewer line

Sewer Manhole

Roofwater Drainage line and Catch Pit

Stormwater Drainage Line

Stormwater Manhole

Stormwater Pit

Water Main

Water Conduit

Water Service Point of Entry

Underground Electricity, Street Light,

Electricity Pillar & NBN

Developer Fencing

Concrete Pathway

Zero Setback Building Line

Proposed Services Easement

Indicative Parking Access Location

Landscape Street Tree

Indicative Building Envelope

Proposed Services Easement

Indicative Parking Access Location

Landscape Street Tree

Indicative Building Envelope

Proposed Services Easement

Indicative Parking Access Location

## ADDITIONAL NOTES:

Allotments used as Multiple Residential Allotments in accordance with the approved Plan of Development may have a reduced primary road setback to 3.0metres as noted on the Plan of Development Table.

Compaction of any fill material placed on this site shall be completed to level one inspection and testing services in accordance with AS3798-2007.

Location of sewer, roofwater, stormwater, water reticulation and electricity lines, manholes and pits are those shown on engineering design drawings, supplied by Bradlees Meinhardt, and may differ from the as-constructed location.

Plan of Development information Supplied by RPS Group PLC.

Copyright © Queensland Surveying Pty Ltd a Veris Company  
February 2017.



## LEGEND

Retaining Wall shown as:-

Sewer line

Sewer Manhole

Roofwater Drainage line and  
Catch Pit

Stormwater Drainage Line

Stormwater Manhole

Stormwater Pit

Water Main

Water Conduit

Water Service Point of Entry

Underground Electricity, Street Light,  
Electricity Pillar & NBN

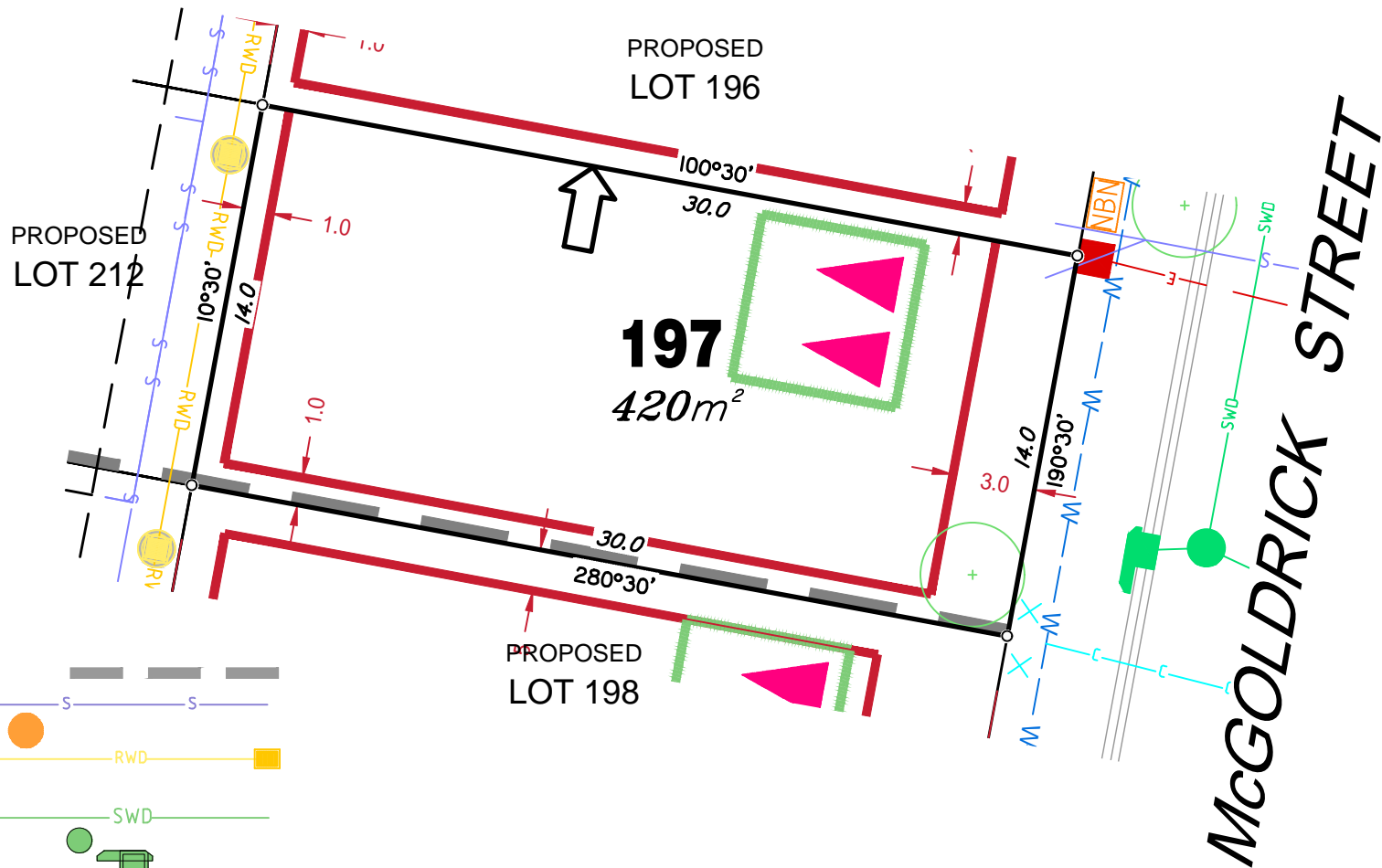
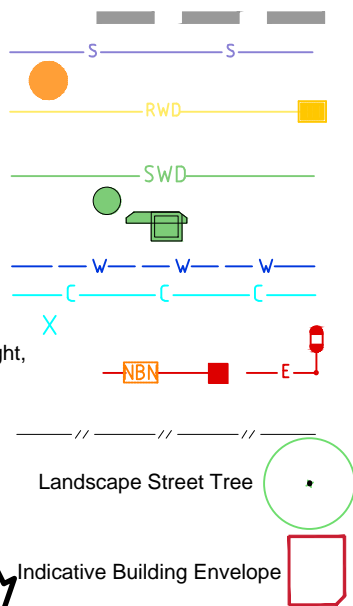
Developer Fencing

Concrete Pathway

Zero Setback Building Line

Proposed Services Easement

Indicative Parking Access Location



## ADDITIONAL NOTES:

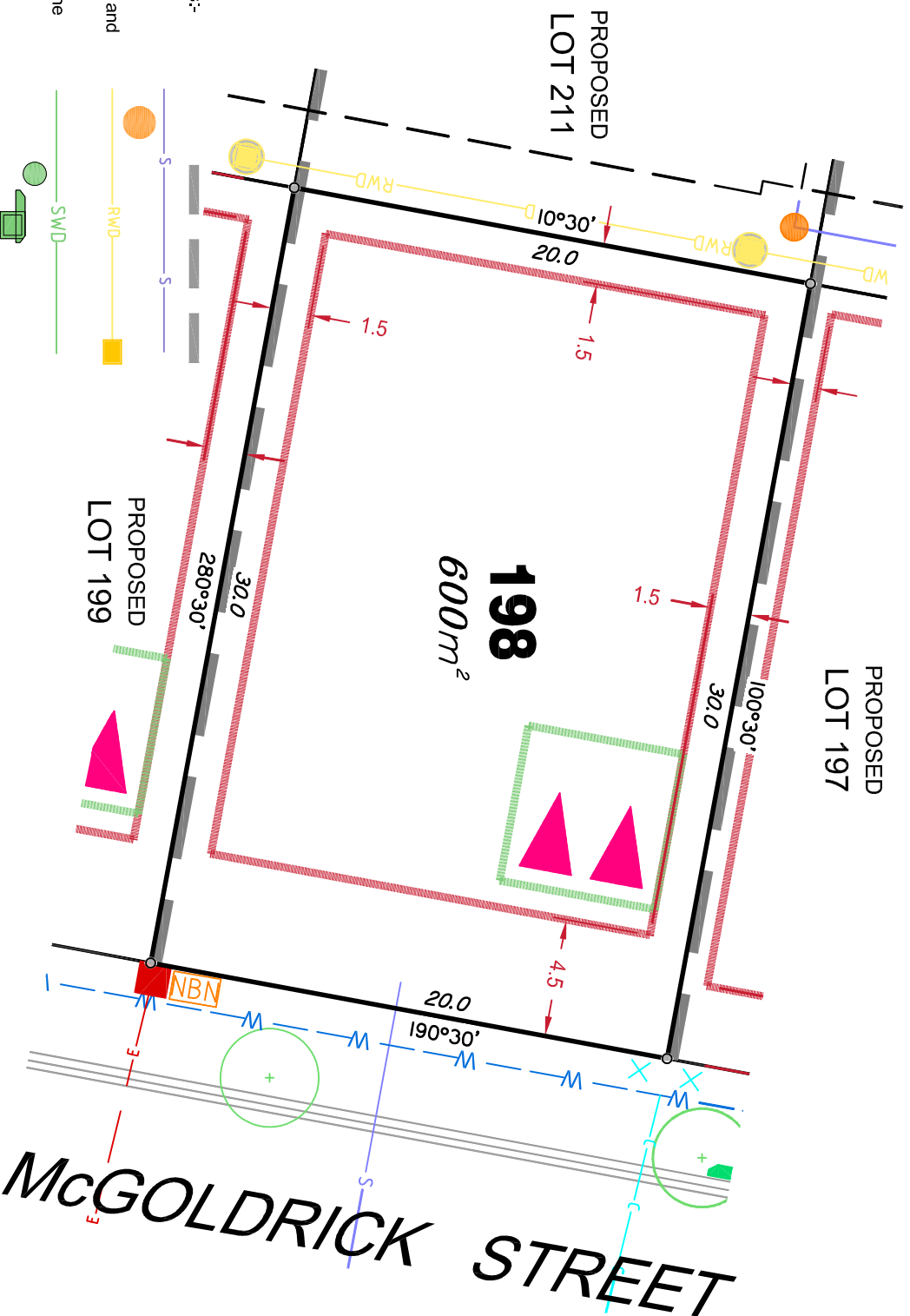
Allotments used as Multiple Residential Allotments in accordance with the approved Plan of Development may have a reduced primary road setback to 3.0metres as noted on the Plan of Development Table.

Compaction of any fill material placed on this site shall be completed to level one inspection and testing services in accordance with AS3798-2007.

Location of sewer, roofwater, stormwater, water reticulation and electricity lines, manholes and pits are those shown on engineering design drawings, supplied by Bradlees Meinhardt, and may differ from the as-constructed location.

Plan of Development information Supplied by RPS Group PLC.

Copyright © Queensland Surveying Pty Ltd a Veris Company  
May 2017.



## LEGEND

Retaining Wall shown as:-

Sewer line

Sewer Manhole

Roofwater Drainage line and Catch Pit

Stormwater Drainage Line

Stormwater Manhole

Stormwater Pit

Water Main

Water Conduit

Water Service Point of Entry

Underground Electricity, Street Light,

Electricity Pillar & NBN

Developer Fencing

Concrete Pathway

Zero Setback Building Line

Proposed Services Easement

Indicative Parking Access Location

## ADDITIONAL NOTES:

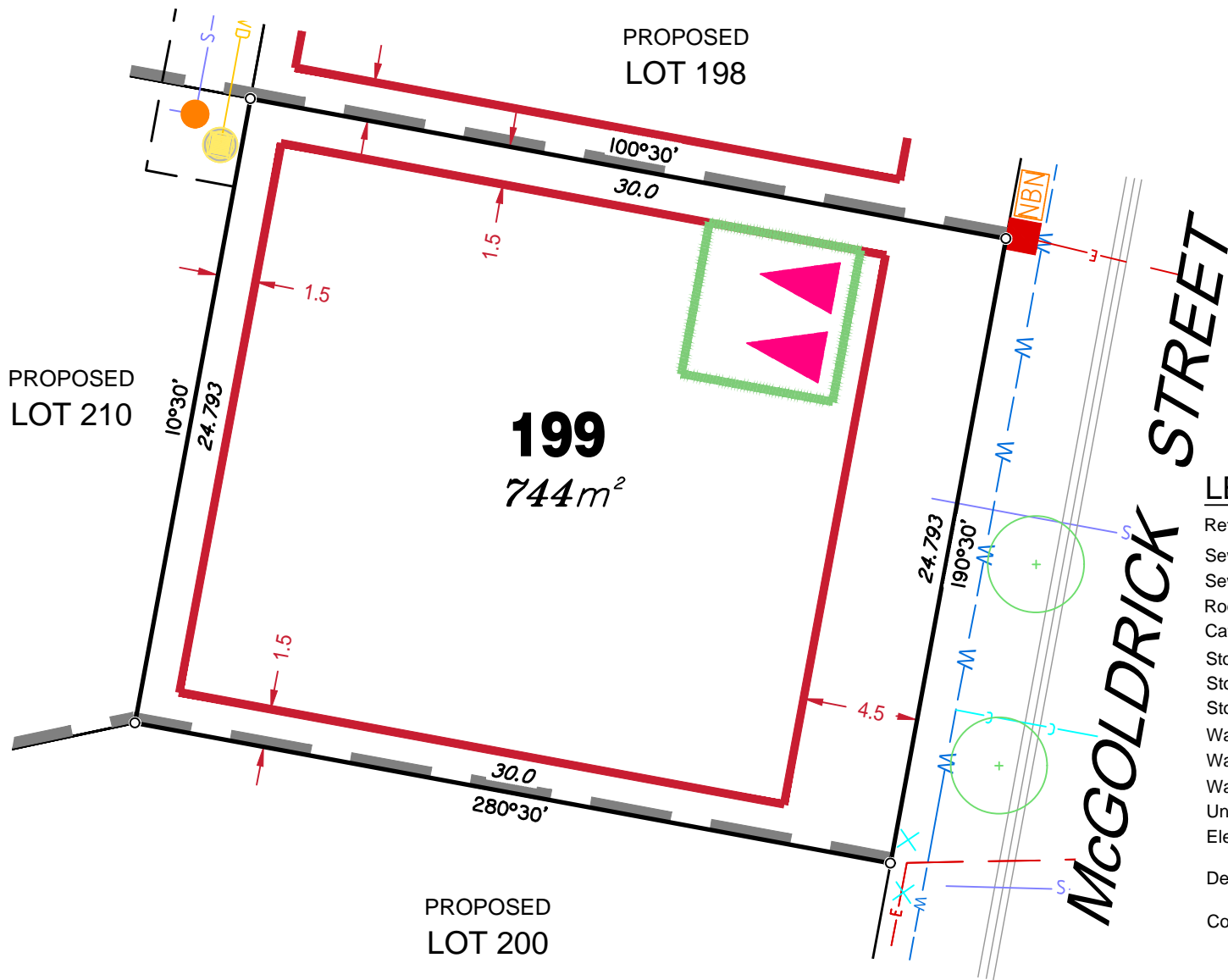
Allotments used as Multiple Residential Allotments in accordance with the approved Plan of Development may have a reduced primary road setback to 3.0metres as noted on the Plan of Development Table.

Compaction of any fill material placed on this site shall be completed to level one inspection and testing services in accordance with AS3798-2007.

Location of sewer, roofwater, stormwater, water reticulation and electricity lines, manholes and pits are those shown on engineering design drawings, supplied by Bradlees Meinhardt, and may differ from the as-constructed location.

Plan of Development information Supplied by RPS Group PLC.

Copyright © Queensland Surveying Pty Ltd a Veris Company  
February 2017.



#### ADDITIONAL NOTES:

Allotments used as Multiple Residential Allotments in accordance with the approved Plan of Development may have a reduced primary road setback to 3.0metres as noted on the Plan of Development Table.

Compaction of any fill material placed on this site shall be completed to level one inspection and testing services in accordance with AS3798-2007.

Location of sewer, roofwater, stormwater, water reticulation and electricity lines, manholes and pits are those shown on engineering design drawings, supplied by Bradlees Meinhardt, and may differ from the as-constructed location.

Plan of Development information Supplied by RPS Group PLC.

Copyright © Queensland Surveying Pty Ltd a Veris Company  
May 2017.

#### LEGEND

Retaining Wall shown as:-

Sewer line

Sewer Manhole

Roofwater Drainage line and  
Catch Pit

Stormwater Drainage Line

Stormwater Manhole

Stormwater Pit

Water Main

Water Conduit

Water Service Point of Entry

Underground Electricity, Street Light,  
Electricity Pillar & NBN

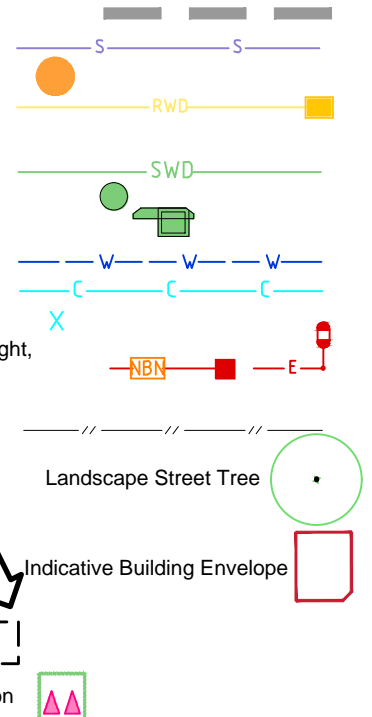
Developer Fencing

Concrete Pathway

Zero Setback Building Line

Proposed Services Easement

Indicative Parking Access Location







## LEGEND

Retaining Wall shown as:-

Sewer line

Sewer Manhole

Roofwater Drainage line and Catch Pit

Stormwater Drainage Line

Stormwater Manhole

Stormwater Pit

Water Main

Water Conduit

Water Service Point of Entry

Underground Electricity, Street Light, Electricity Pillar & NBN

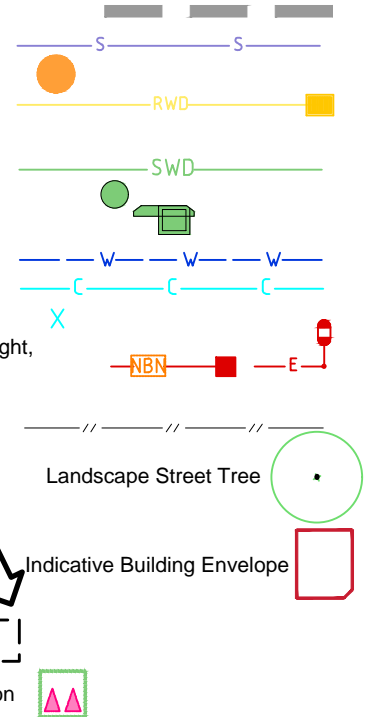
Developer Fencing

Concrete Pathway

Zero Setback Building Line

Proposed Services Easement

Indicative Parking Access Location



## ADDITIONAL NOTES:

Allotments used as Multiple Residential Allotments in accordance with the approved Plan of Development may have a reduced primary road setback to 3.0metres as noted on the Plan of Development Table.

Compaction of any fill material placed on this site shall be completed to level one inspection and testing services in accordance with AS3798-2007.

Location of sewer, roofwater, stormwater, water reticulation and electricity lines, manholes and pits are those shown on engineering design drawings, supplied by Bradlees Meinhardt, and may differ from the as-constructed location.

Plan of Development information Supplied by RPS Group PLC.

Copyright © Queensland Surveying Pty Ltd a Veris Company  
May 2017.