

## LEGEND

Retaining Wall shown as:-

Sewer line

Sewer Manhole

Roofwater Drainage line and Catch Pit

Stormwater Drainage Line

Stormwater Manhole

Stormwater Pit

Water Main

Water Conduit

Water Service Point of Entry

Underground Electricity, Street Light,

Electricity Pillar & NBN

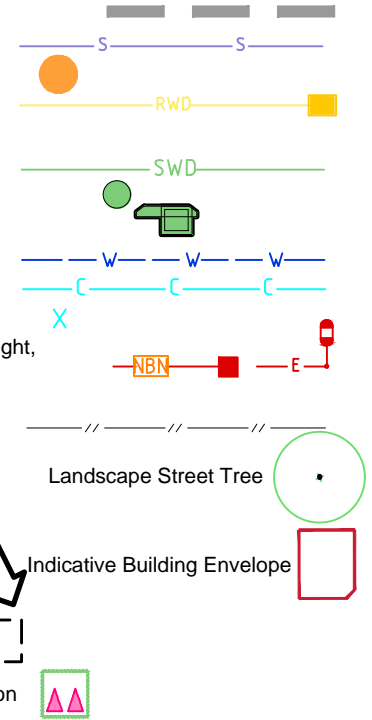
Developer Fencing

Concrete Pathway

Zero Setback Building Line

Proposed Services Easement

Indicative Parking Access Location



## ADDITIONAL NOTES:

Allotments used as Multiple Residential Allotments in accordance with the approved Plan of Development may have a reduced primary road setback to 3.0metres as noted on the Plan of Development Table.

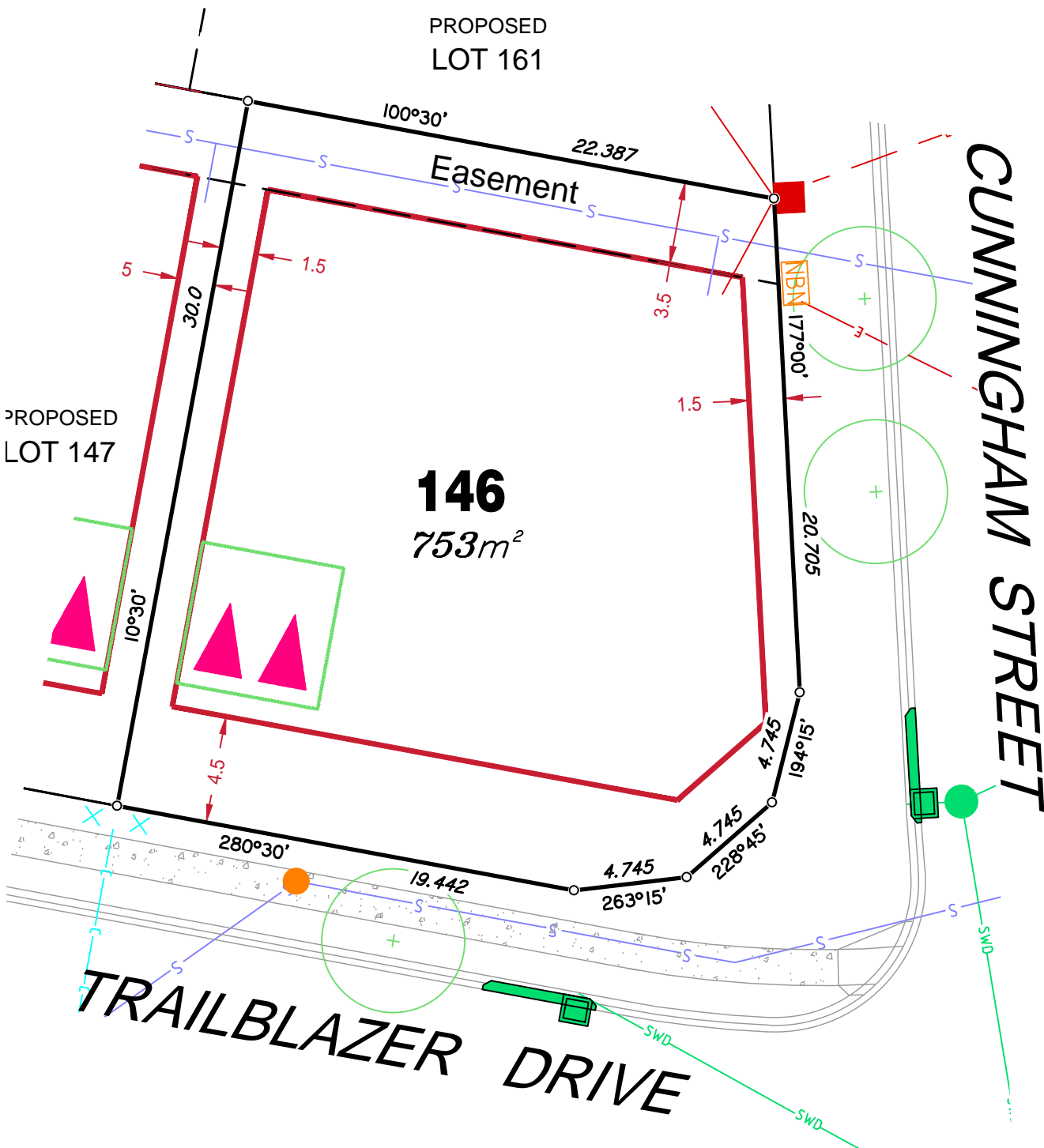
Compaction of any fill material placed on this site shall be completed to level one inspection and testing services in accordance with AS3798-2007.

Location of sewer, roofwater, stormwater, water reticulation and electricity lines, manholes and pits are those shown on engineering design drawings, supplied by Bradlees Meinhardt, and may differ from the as-constructed location.

Plan of Development information Supplied by RPS Group PLC.

Copyright © Queensland Surveying Pty Ltd t/a Veris May 2017.





## LEGEND

Retaining Wall shown as:-

Sewer line

Sewer Manhole

Roofwater Drainage line and  
Catch Pit

Stormwater Drainage Line

Stormwater Manhole

Stormwater Pit

Water Main

Water Conduit

Water Service Point of Entry

Underground Electricity, Street Light,  
Electricity Pillar & NBN

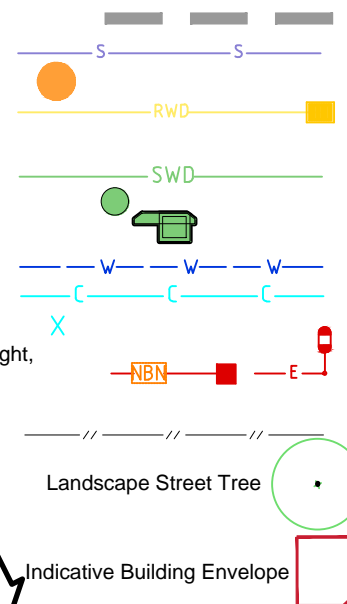
Developer Fencing

Concrete Pathway

Zero Setback Building Line

Proposed Services Easement

Indicative Parking Access Location



## ADDITIONAL NOTES:

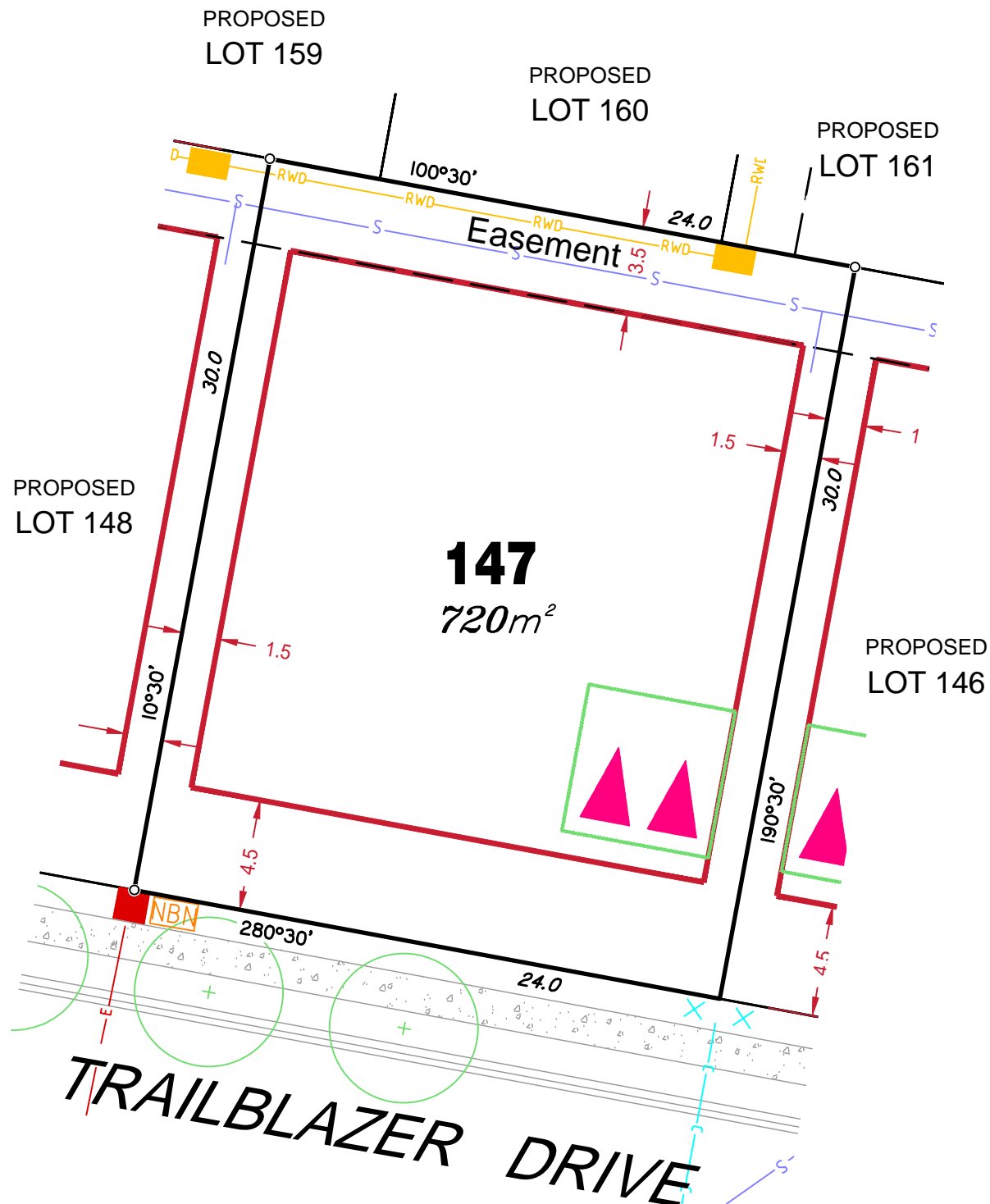
Allotments used as Multiple Residential Allotments in accordance with the approved Plan of Development may have a reduced primary road setback to 3.0metres as noted on the Plan of Development Table.

Compaction of any fill material placed on this site shall be completed to level one inspection and testing services in accordance with AS3798-2007.

Location of sewer, roofwater, stormwater, water reticulation and electricity lines, manholes and pits are those shown on engineering design drawings, supplied by Bradlees Meinhardt, and may differ from the as-constructed location.

Plan of Development information Supplied by RPS Group PLC.

Copyright © Queensland Surveying Pty Ltd t/a Veris December 2016.



## LEGEND

Retaining Wall shown as:-

Sewer line

Sewer Manhole

Roofwater Drainage line and  
Catch Pit

Stormwater Drainage Line

Stormwater Manhole

Stormwater Pit

Water Main

Water Conduit

Water Service Point of Entry

Underground Electricity, Street Light,

Electricity Pillar & NBN

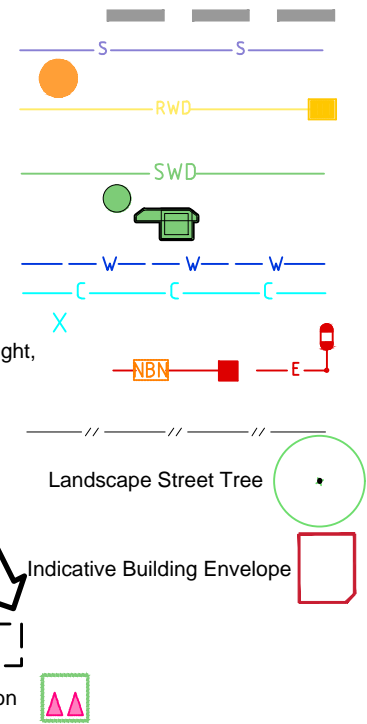
Developer Fencing

Concrete Pathway

Zero Setback Building Line

Proposed Services Easement

Indicative Parking Access Location



## ADDITIONAL NOTES:

Allotments used as Multiple Residential Allotments in accordance with the approved Plan of Development may have a reduced primary road setback to 3.0metres as noted on the Plan of Development Table.

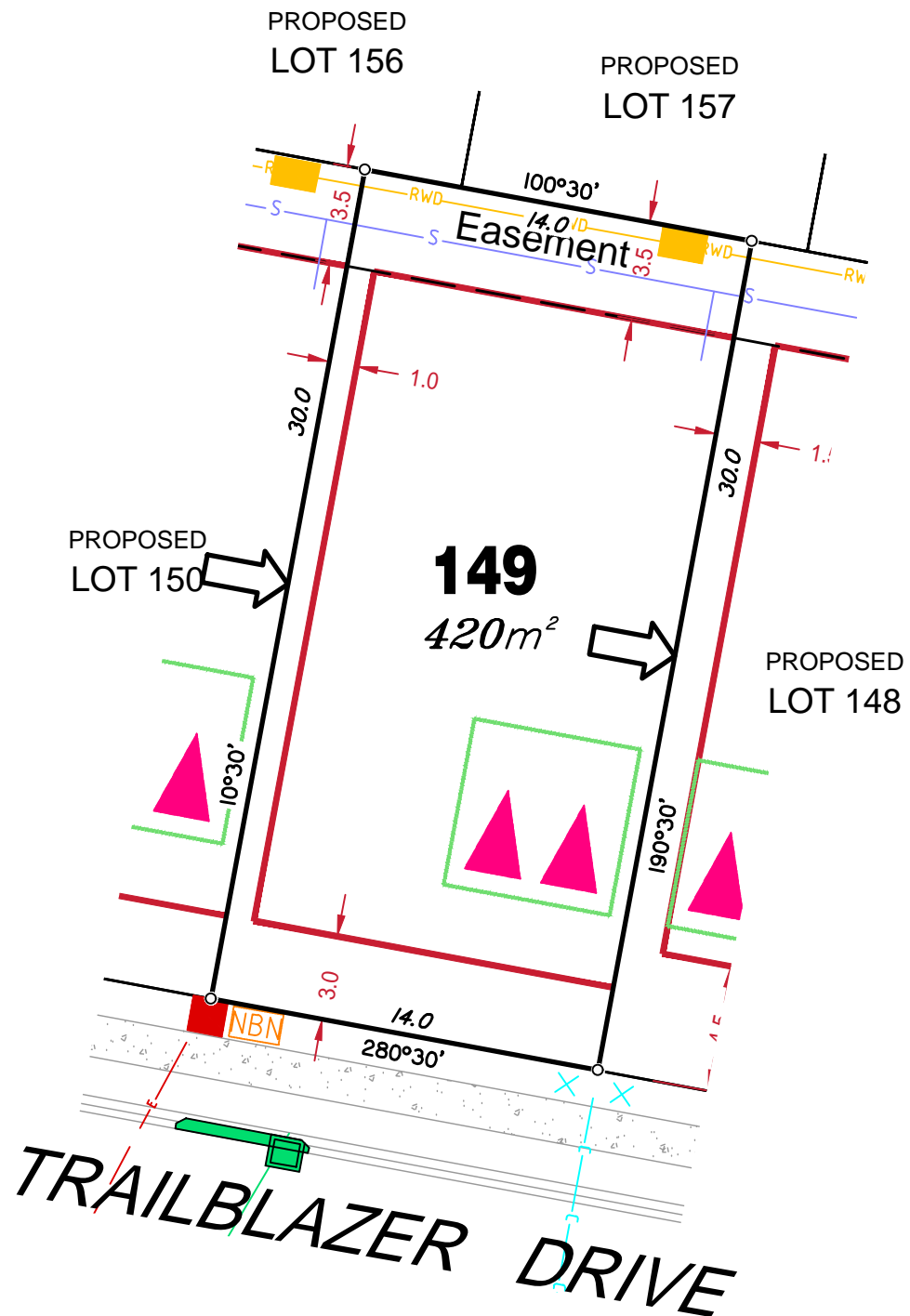
Compaction of any fill material placed on this site shall be completed to level one inspection and testing services in accordance with AS3798-2007.

Location of sewer, roofwater, stormwater, water reticulation and electricity lines, manholes and pits are those shown on engineering design drawings, supplied by Bradlees Meinhardt, and may differ from the as-constructed location.

Plan of Development information Supplied by RPS Group PLC.

Copyright © Queensland Surveying Pty Ltd t/a Veris December 2016.





## LEGEND

Retaining Wall shown as:-

Sewer line

Sewer Manhole

Roofwater Drainage line and

Catch Pit

Stormwater Drainage Line

Stormwater Manhole

Stormwater Pit

Water Main

Water Conduit

Water Service Point of Entry

Underground Electricity, Street Light,

Electricity Pillar & NBN

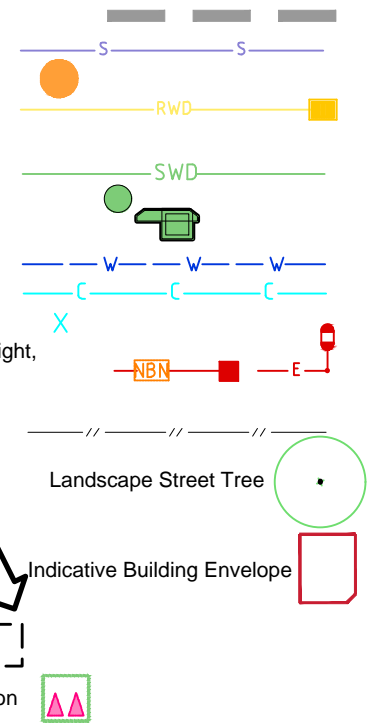
Developer Fencing

Concrete Pathway

Zero Setback Building Line

Proposed Services Easement

Indicative Parking Access Location



## ADDITIONAL NOTES:

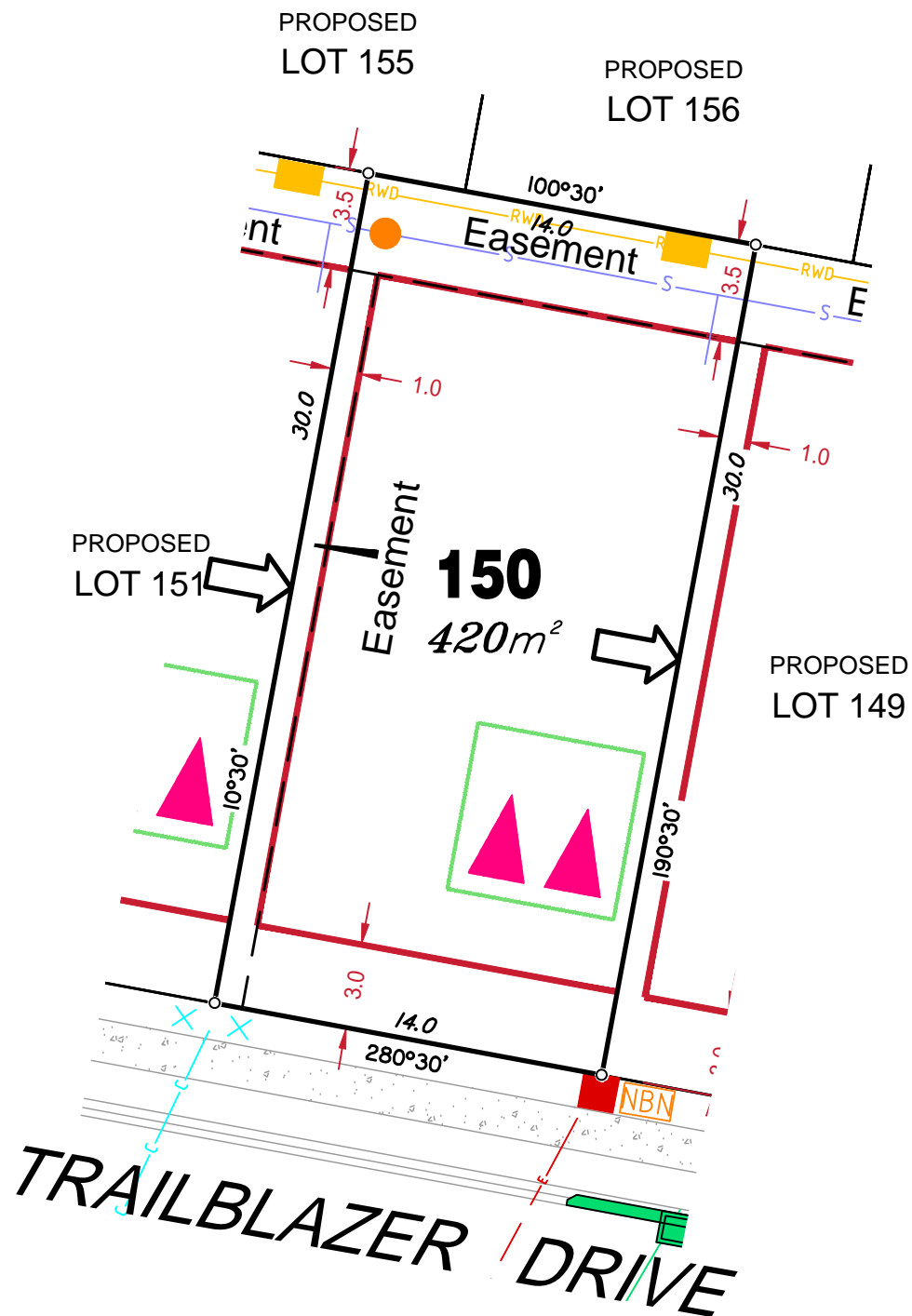
Allotments used as Multiple Residential Allotments in accordance with the approved Plan of Development may have a reduced primary road setback to 3.0metres as noted on the Plan of Development Table.

Compaction of any fill material placed on this site shall be completed to level one inspection and testing services in accordance with AS3798-2007.

Location of sewer, roofwater, stormwater, water reticulation and electricity lines, manholes and pits are those shown on engineering design drawings, supplied by Bradlees Meinhardt, and may differ from the as-constructed location.

Plan of Development information Supplied by RPS Group PLC.

Copyright © Queensland Surveying Pty Ltd t/a Veris December 2016.



## LEGEND

Retaining Wall shown as:-

Sewer line

Sewer Manhole

Roofwater Drainage line and

Catch Pit

Stormwater Drainage Line

Stormwater Manhole

Stormwater Pit

Water Main

Water Conduit

Water Service Point of Entry

Underground Electricity, Street Light,

Electricity Pillar & NBN

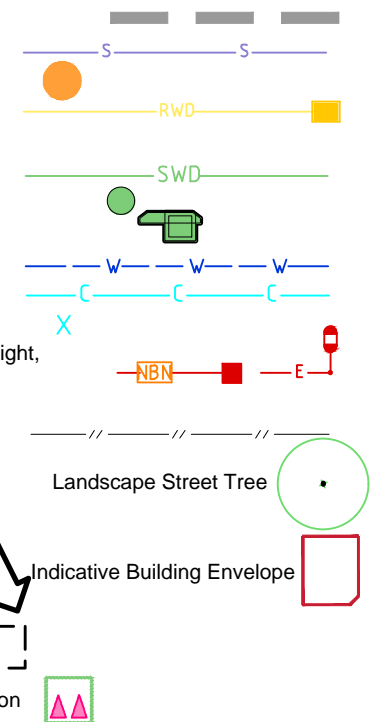
Developer Fencing

Concrete Pathway

Zero Setback Building Line

Proposed Services Easement

Indicative Parking Access Location



## ADDITIONAL NOTES:

Allotments used as Multiple Residential Allotments in accordance with the approved Plan of Development may have a reduced primary road setback to 3.0metres as noted on the Plan of Development Table.

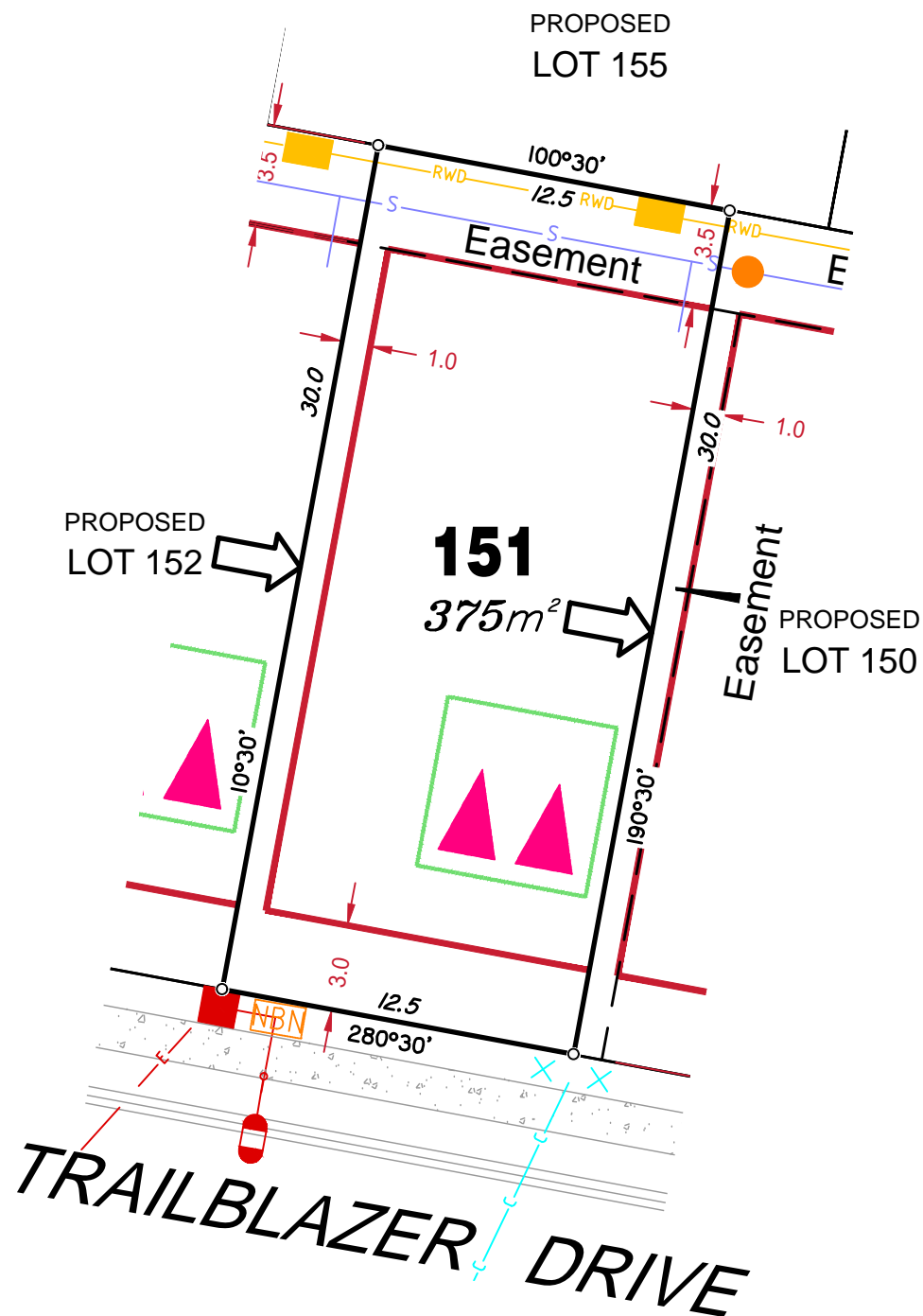
Compaction of any fill material placed on this site shall be completed to level one inspection and testing services in accordance with AS3798-2007.

Location of sewer, roofwater, stormwater, water reticulation and electricity lines, manholes and pits are those shown on engineering design drawings, supplied by Bradlees Meinhardt, and may differ from the as-constructed location.

Plan of Development information Supplied by RPS Group PLC.

Copyright © Queensland Surveying Pty Ltd t/a Veris December 2016.





## LEGEND

Retaining Wall shown as:-

Sewer line

Sewer Manhole

Roofwater Drainage line and

Catch Pit

Stormwater Drainage Line

Stormwater Manhole

Stormwater Pit

Water Main

Water Conduit

Water Service Point of Entry

Underground Electricity, Street Light,

Electricity Pillar & NBN

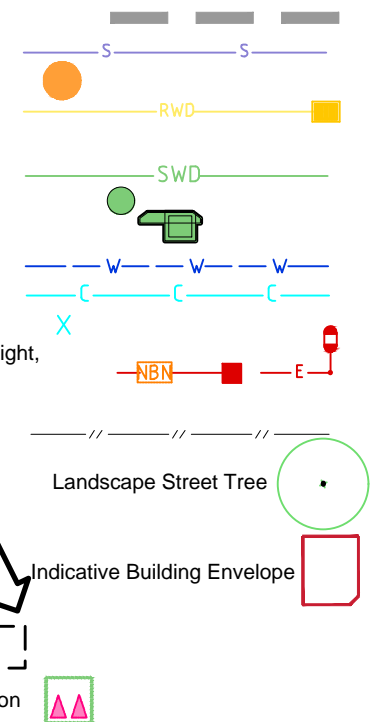
Developer Fencing

Concrete Pathway

Zero Setback Building Line

Proposed Services Easement

Indicative Parking Access Location



## ADDITIONAL NOTES:

Allotments used as Multiple Residential Allotments in accordance with the approved Plan of Development may have a reduced primary road setback to 3.0metres as noted on the Plan of Development Table.

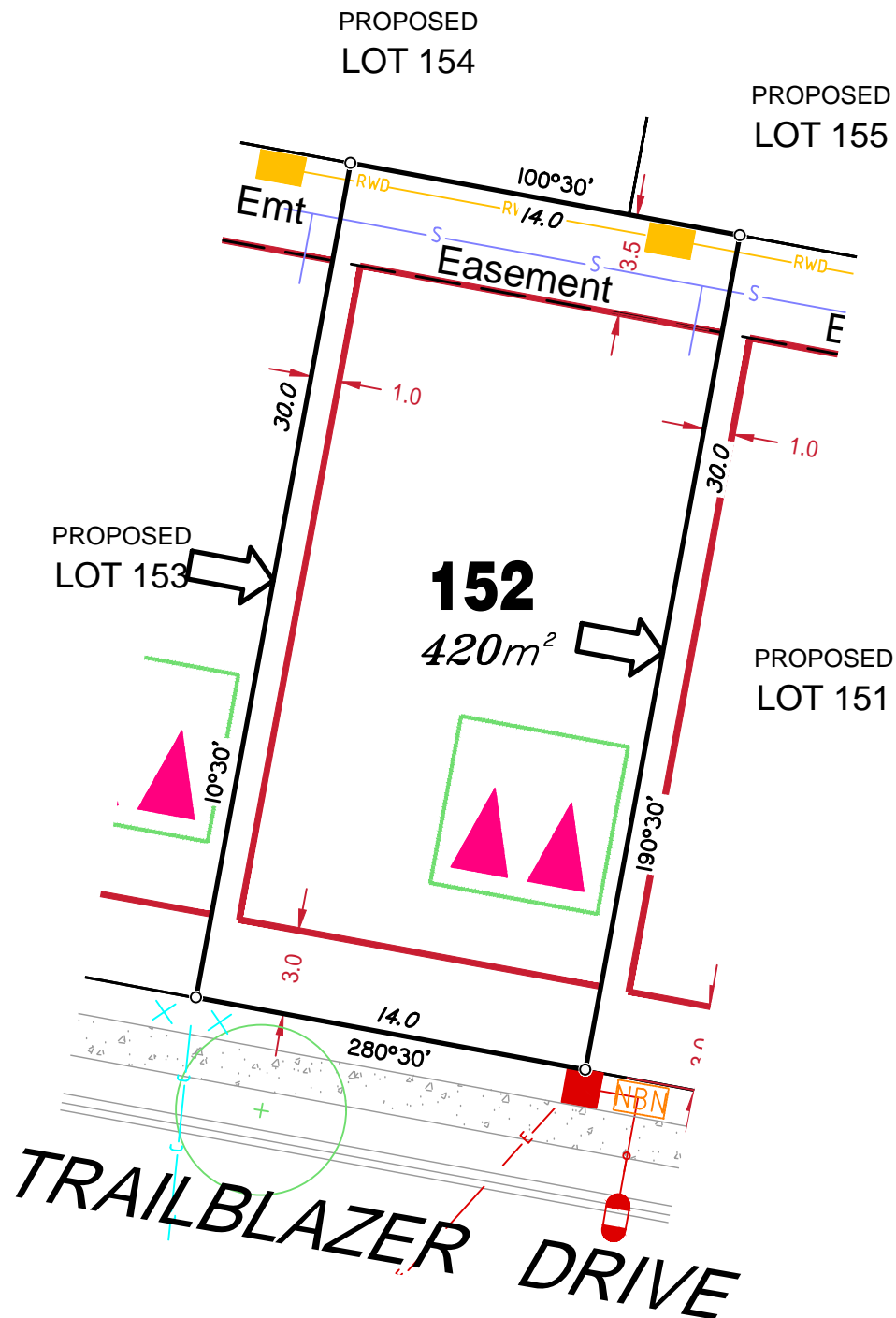
Compaction of any fill material placed on this site shall be completed to level one inspection and testing services in accordance with AS3798-2007.

Location of sewer, roofwater, stormwater, water reticulation and electricity lines, manholes and pits are those shown on engineering design drawings, supplied by Bradlees Meinhardt, and may differ from the as-constructed location.

Plan of Development information Supplied by RPS Group PLC.

Copyright © Queensland Surveying Pty Ltd t/a Veris December 2016.





## LEGEND

Retaining Wall shown as:-

Sewer line

Sewer Manhole

Roofwater Drainage line and

Catch Pit

Stormwater Drainage Line

Stormwater Manhole

Stormwater Pit

Water Main

Water Conduit

Water Service Point of Entry

Underground Electricity, Street Light,

Electricity Pillar & NBN

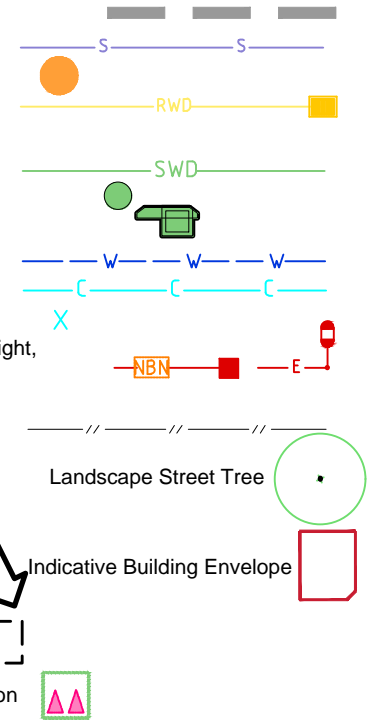
Developer Fencing

Concrete Pathway

Zero Setback Building Line

Proposed Services Easement

Indicative Parking Access Location



## ADDITIONAL NOTES:

Allotments used as Multiple Residential Allotments in accordance with the approved Plan of Development may have a reduced primary road setback to 3.0metres as noted on the Plan of Development Table.

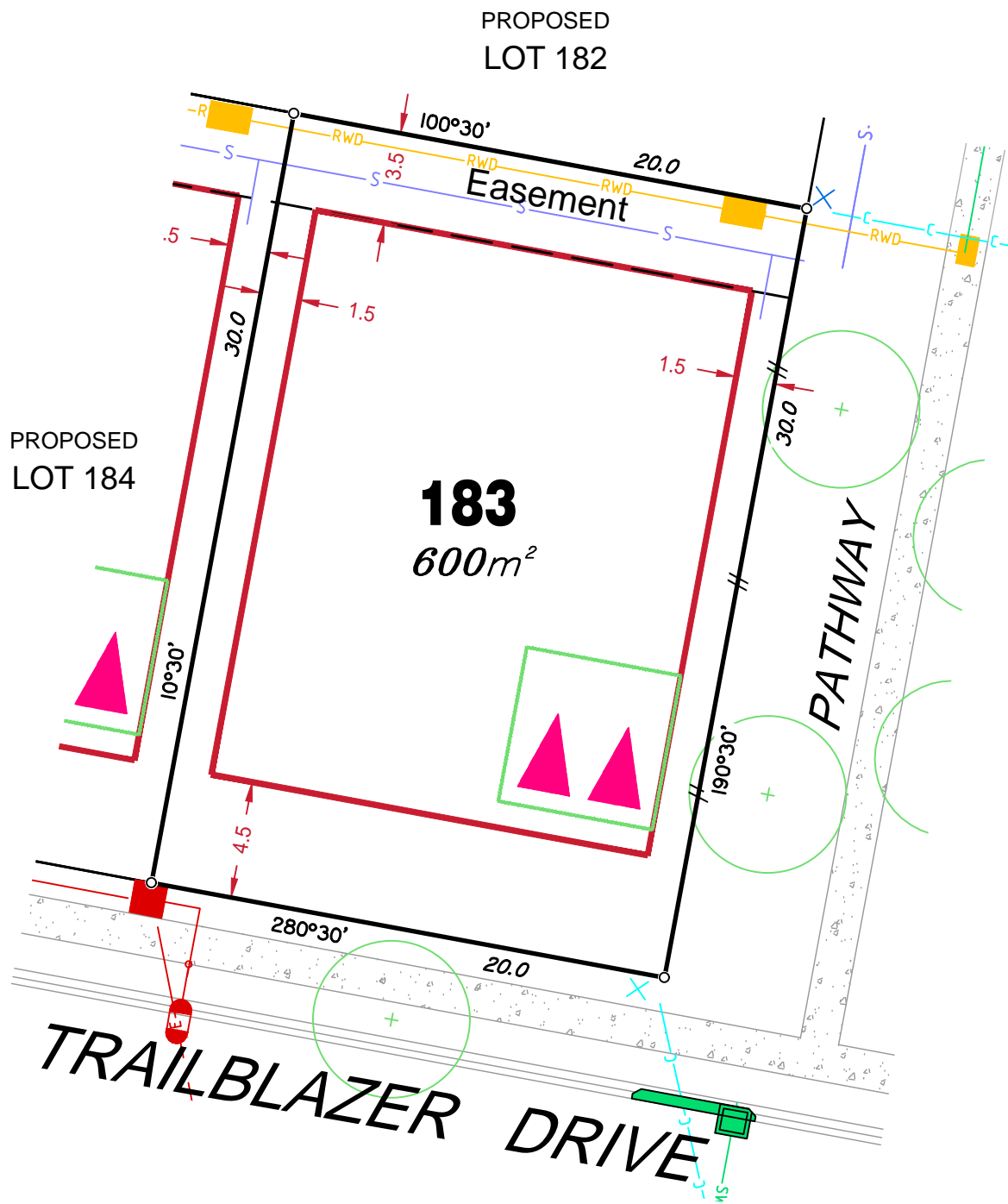
Compaction of any fill material placed on this site shall be completed to level one inspection and testing services in accordance with AS3798-2007.

Location of sewer, roofwater, stormwater, water reticulation and electricity lines, manholes and pits are those shown on engineering design drawings, supplied by Bradlees Meinhardt, and may differ from the as-constructed location.

Plan of Development information Supplied by RPS Group PLC.

Copyright © Queensland Surveying Pty Ltd t/a Veris December 2016.





## LEGEND

Retaining Wall shown as:-

Sewer line

Sewer Manhole

Roofwater Drainage line and

Catch Pit

Stormwater Drainage Line

Stormwater Manhole

Stormwater Pit

Water Main

Water Conduit

Water Service Point of Entry

Underground Electricity, Street Light,

Electricity Pillar & NBN

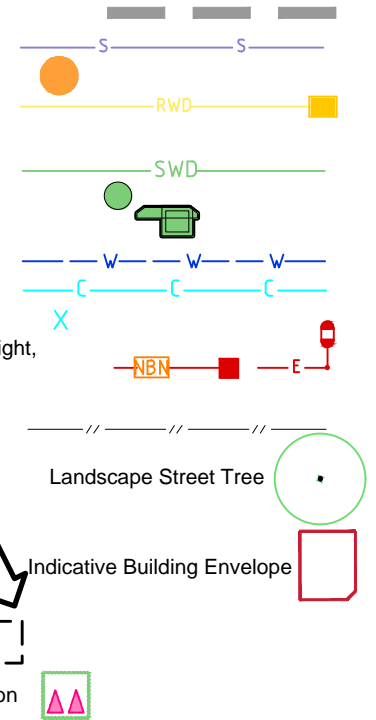
Developer Fencing

Concrete Pathway

Zero Setback Building Line

Proposed Services Easement

Indicative Parking Access Location



## ADDITIONAL NOTES:

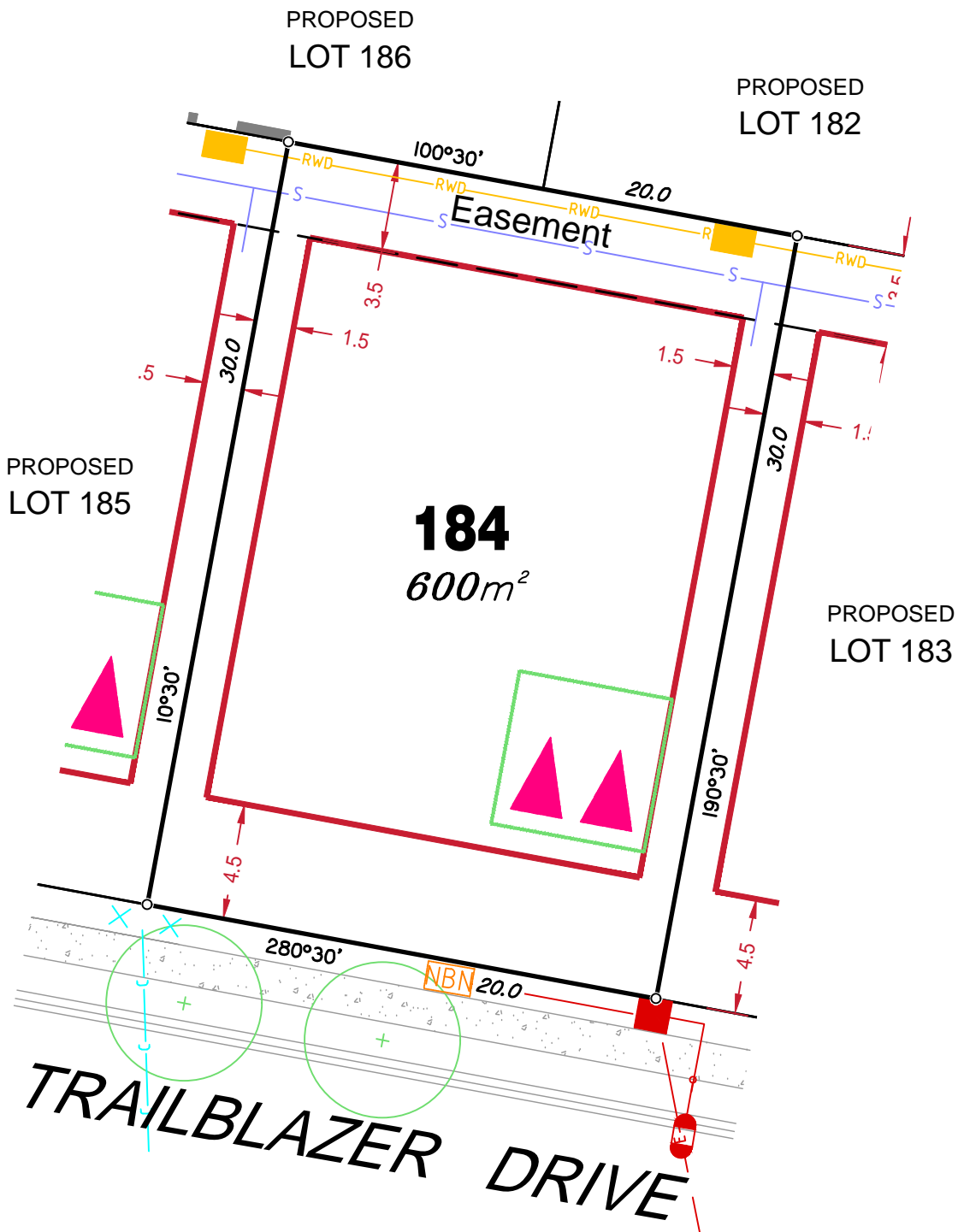
Allotments used as Multiple Residential Allotments in accordance with the approved Plan of Development may have a reduced primary road setback to 3.0metres as noted on the Plan of Development Table.

Compaction of any fill material placed on this site shall be completed to level one inspection and testing services in accordance with AS3798-2007.

Location of sewer, roofwater, stormwater, water reticulation and electricity lines, manholes and pits are those shown on engineering design drawings, supplied by Bradlees Meinhardt, and may differ from the as-constructed location.

Plan of Development information Supplied by RPS Group PLC.

Copyright © Queensland Surveying Pty Ltd t/a Veris December 2016.



## LEGEND

Retaining Wall shown as:-

Sewer line

Sewer Manhole

Roofwater Drainage line and

Catch Pit

Stormwater Drainage Line

Stormwater Manhole

Stormwater Pit

Water Main

Water Conduit

Water Service Point of Entry

Underground Electricity, Street Light,

Electricity Pillar & NBN

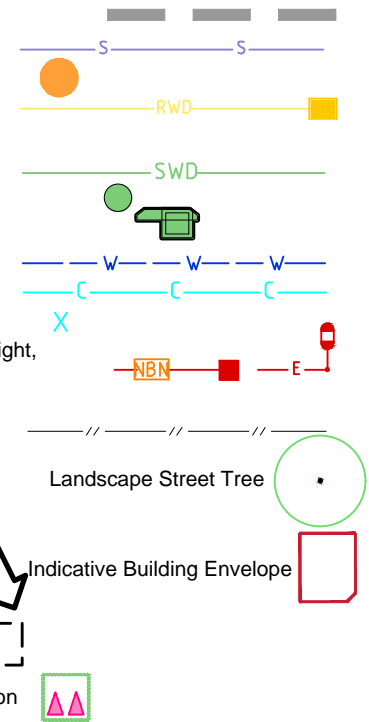
Developer Fencing

Concrete Pathway

Zero Setback Building Line

Proposed Services Easement

Indicative Parking Access Location



## ADDITIONAL NOTES:

Allotments used as Multiple Residential Allotments in accordance with the approved Plan of Development may have a reduced primary road setback to 3.0metres as noted on the Plan of Development Table.

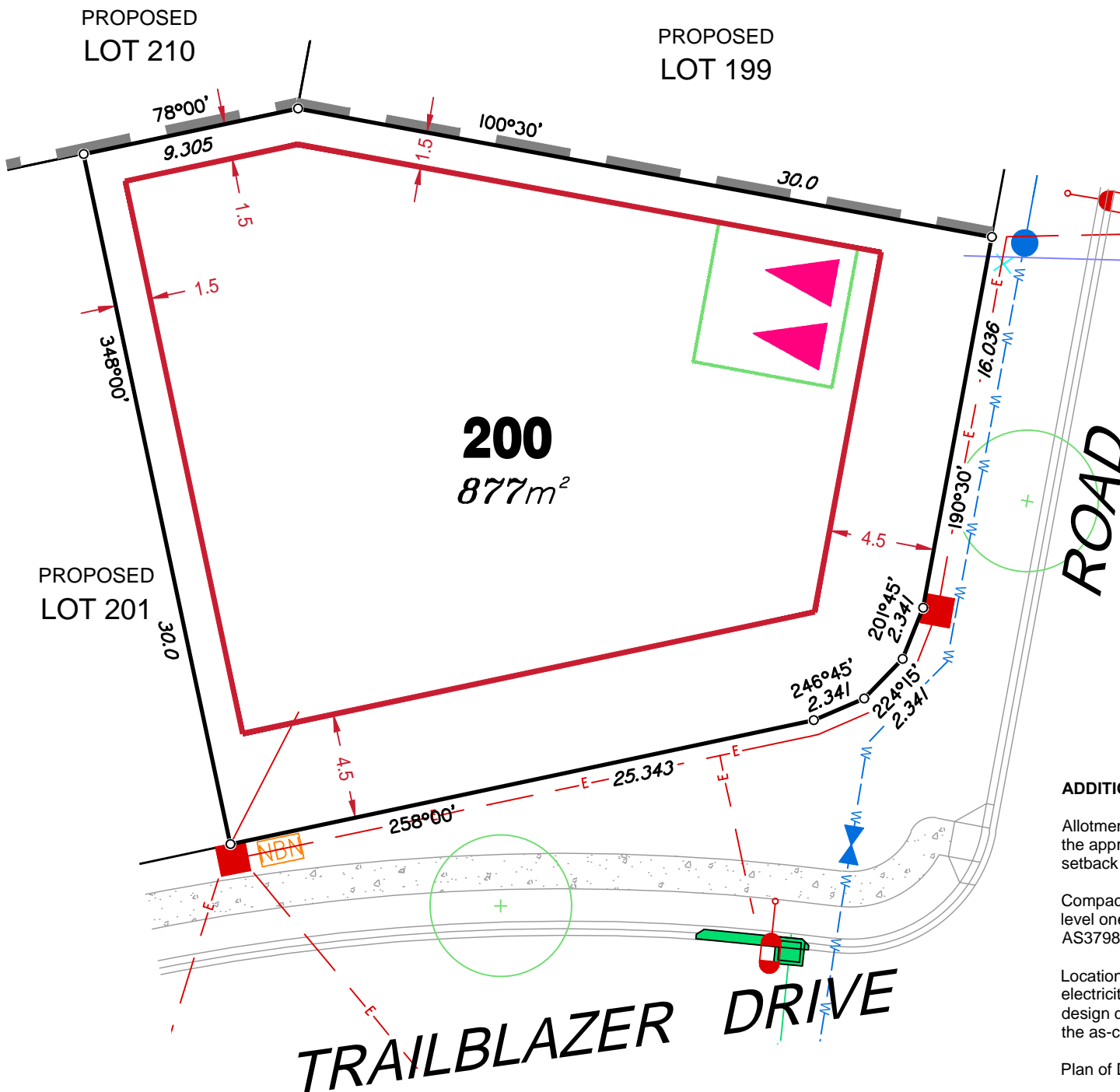
Compaction of any fill material placed on this site shall be completed to level one inspection and testing services in accordance with AS3798-2007.

Location of sewer, roofwater, stormwater, water reticulation and electricity lines, manholes and pits are those shown on engineering design drawings, supplied by Bradlees Meinhardt, and may differ from the as-constructed location.

Plan of Development information Supplied by RPS Group PLC.

Copyright © Queensland Surveying Pty Ltd t/a Veris December 2016.





## LEGEND

Retaining Wall shown as:-

Sewer line

Sewer Manhole

Roofwater Drainage line and  
Catch Pit

Stormwater Drainage Line

Stormwater Manhole

Stormwater Pit

Water Main

Water Conduit

Water Service Point of Entry

Underground Electricity, Street Light,  
Electricity Pillar & NBN

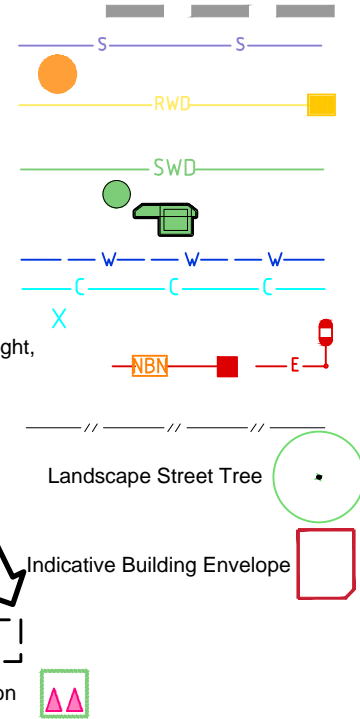
Developer Fencing

Concrete Pathway

Zero Setback Building Line

Proposed Services Easement

Indicative Parking Access Location



## ADDITIONAL NOTES:

Allotments used as Multiple Residential Allotments in accordance with the approved Plan of Development may have a reduced primary road setback to 3.0metres as noted on the Plan of Development Table.

Compaction of any fill material placed on this site shall be completed to level one inspection and testing services in accordance with AS3798-2007.

Location of sewer, roofwater, stormwater, water reticulation and electricity lines, manholes and pits are those shown on engineering design drawings, supplied by Bradlees Meinhardt, and may differ from the as-constructed location.

Plan of Development information Supplied by RPS Group PLC.

Copyright © Queensland Surveying Pty Ltd t/a Veris May 2017.

## ADDITIONAL NOTES:

Allotments used as Multiple Residential Allotments in accordance with the approved Plan of Development may have a reduced primary road setback to 3.0metres as noted on the Plan of Development Table.

Compaction of any fill material placed on this site shall be completed to level one inspection and testing services in accordance with AS3798-2007.

Location of sewer, roofwater, stormwater, water reticulation and electricity lines, manholes and pits are those shown on engineering design drawings, supplied by Bradlees Meinhardt, and may differ from the as-constructed location.

Plan of Development information Supplied by RPS Group PLC.

Copyright © Queensland Surveying Pty Ltd t/a Veris December 2016.

## LEGEND

Retaining Wall shown as:-

Sewer line

Sewer Manhole

Roofwater Drainage line and Catch Pit

Stormwater Drainage Line

Stormwater Manhole

Stormwater Pit

Water Main

Water Conduit

Water Service Point of Entry

Underground Electricity, Street Light, Electricity Pillar & NBN

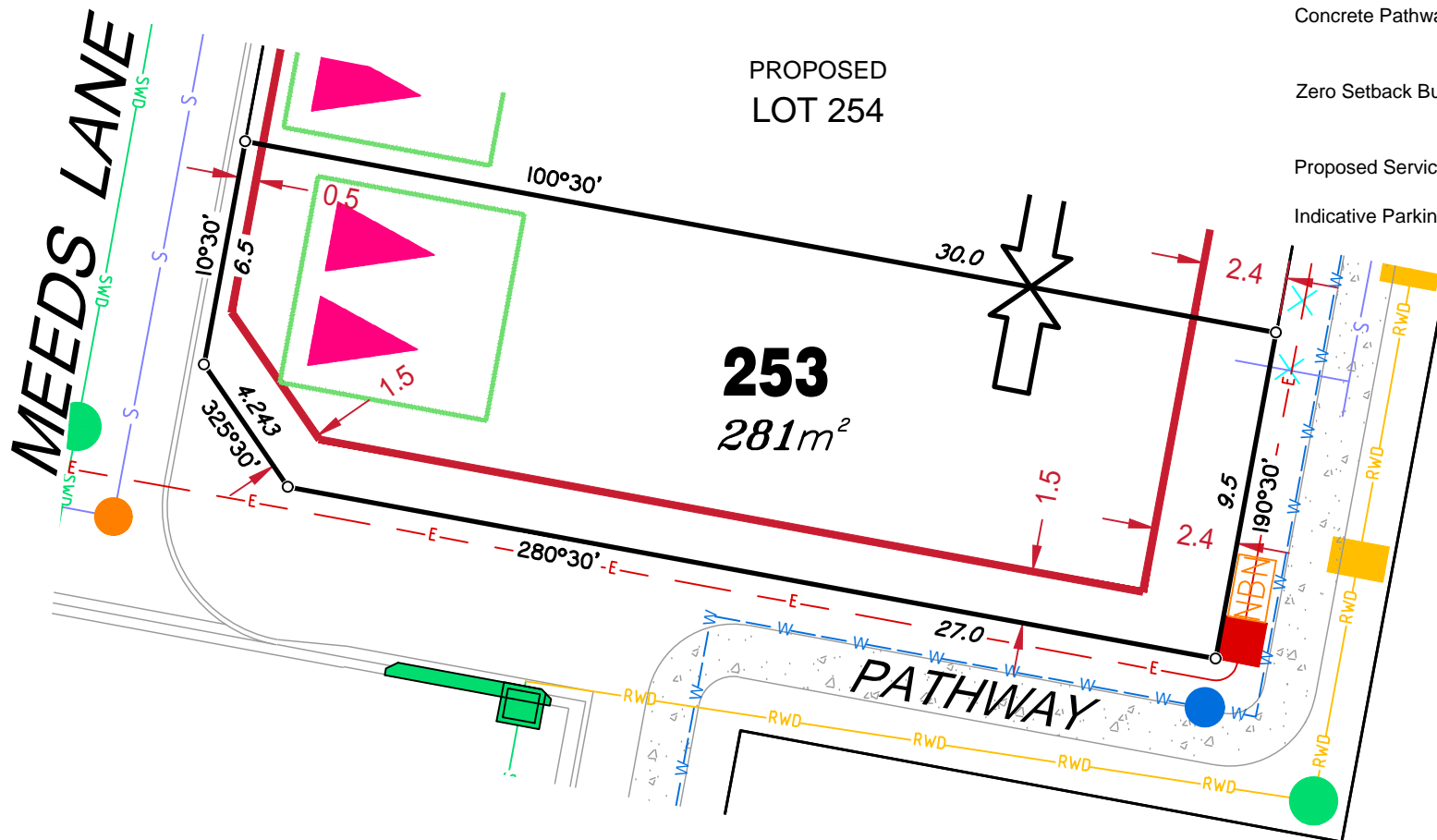
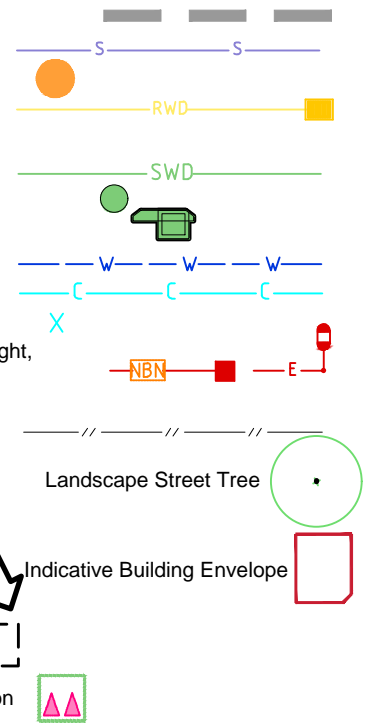
Developer Fencing

Concrete Pathway

Zero Setback Building Line

Proposed Services Easement

Indicative Parking Access Location





## ADDITIONAL NOTES:

Allotments used as Multiple Residential Allotments in accordance with the approved Plan of Development may have a reduced primary road setback to 3.0metres as noted on the Plan of Development Table.

Compaction of any fill material placed on this site shall be completed to level one inspection and testing services in accordance with AS3798-2007.

Location of sewer, roofwater, stormwater, water reticulation and electricity lines, manholes and pits are those shown on engineering design drawings, supplied by Bradlees Meinhardt, and may differ from the as-constructed location.

Plan of Development information Supplied by RPS Group PLC.

Copyright © Queensland Surveying Pty Ltd t/a Veris December 2016.

## LEGEND

Retaining Wall shown as:-

Sewer line

Sewer Manhole

Roofwater Drainage line and

Catch Pit

Stormwater Drainage Line

Stormwater Manhole

Stormwater Pit

Water Main

Water Conduit

Water Service Point of Entry

Underground Electricity, Street Light,

Electricity Pillar & NBN

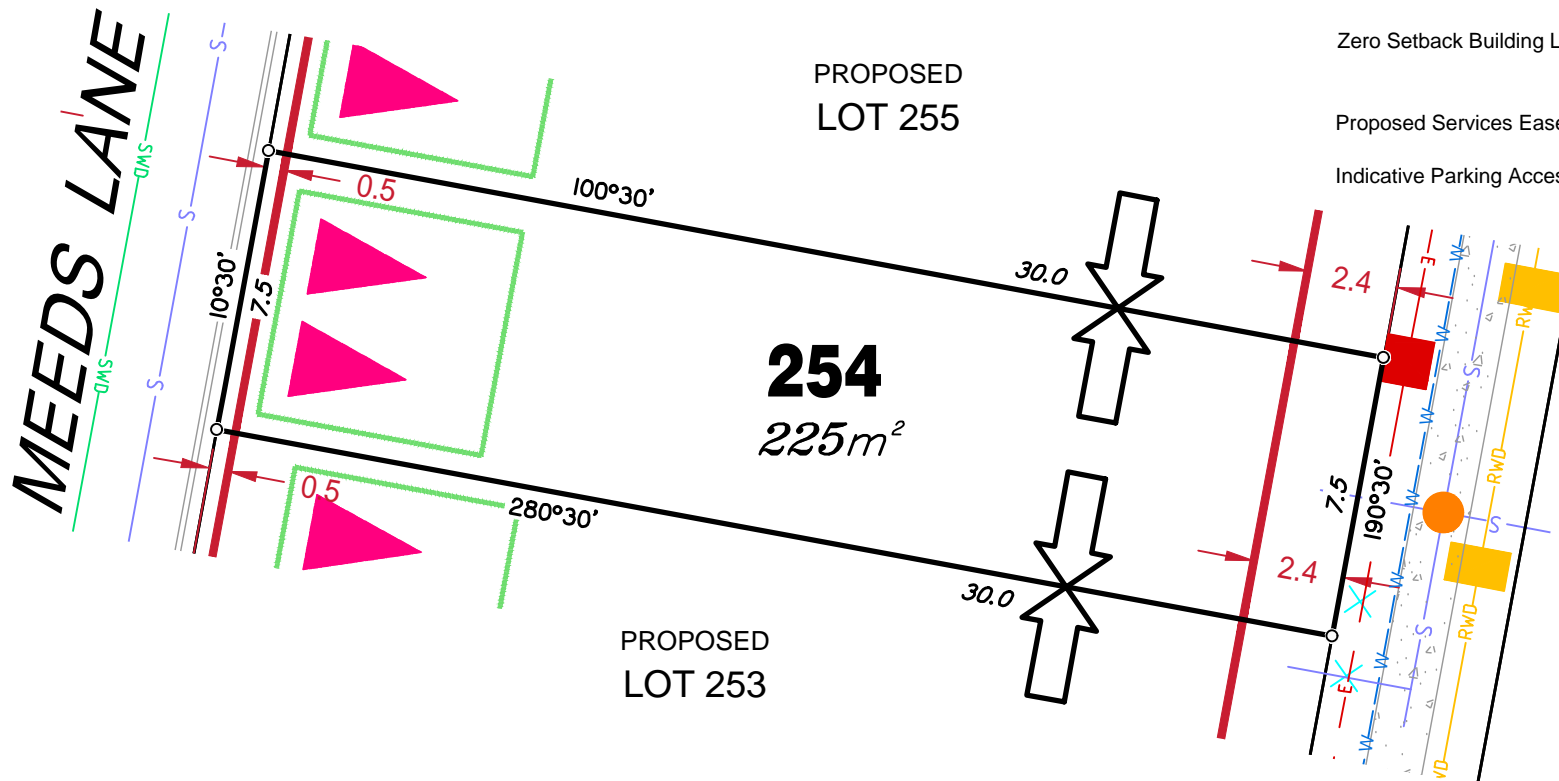
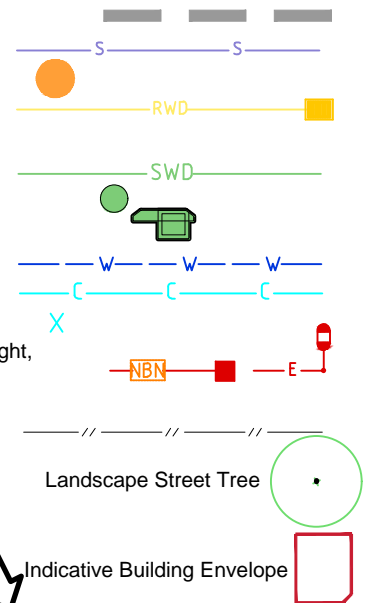
Developer Fencing

Concrete Pathway

Zero Setback Building Line

Proposed Services Easement

Indicative Parking Access Location



### ADDITIONAL NOTES:

Allotments used as Multiple Residential Allotments in accordance with the approved Plan of Development may have a reduced primary road setback to 3.0metres as noted on the Plan of Development Table.

Compaction of any fill material placed on this site shall be completed to level one inspection and testing services in accordance with AS3798-2007.

Location of sewer, roofwater, stormwater, water reticulation and electricity lines, manholes and pits are those shown on engineering design drawings, supplied by Bradlees Meinhardt, and may differ from the as-constructed location.

Plan of Development information Supplied by RPS Group PLC.

Copyright © Queensland Surveying Pty Ltd t/a Veris December 2016.

### LEGEND

Retaining Wall shown as:-

Sewer line

Sewer Manhole

Roofwater Drainage line and Catch Pit

Stormwater Drainage Line

Stormwater Manhole

Stormwater Pit

Water Main

Water Conduit

Water Service Point of Entry

Underground Electricity, Street Light,

Electricity Pillar & NBN

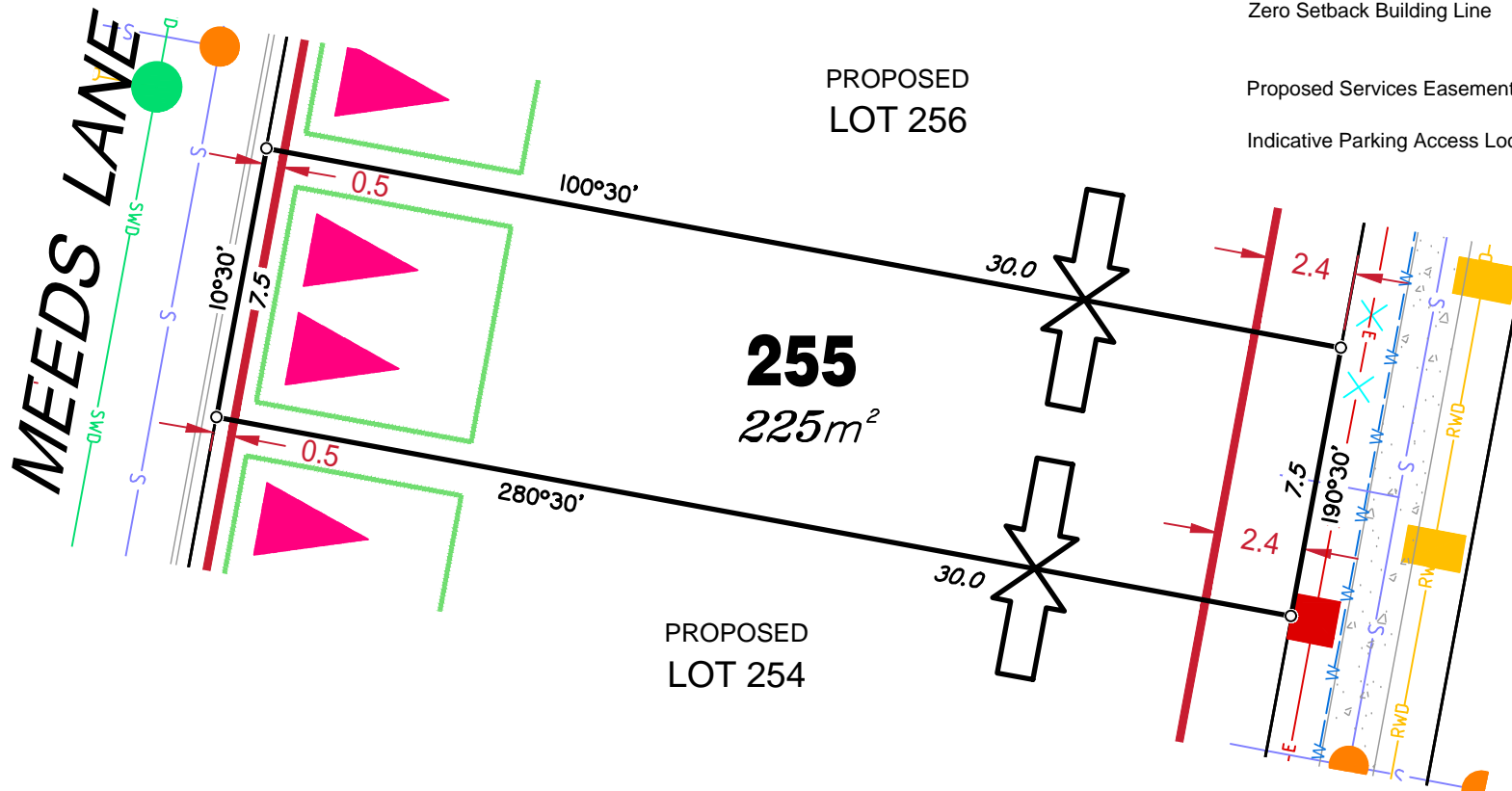
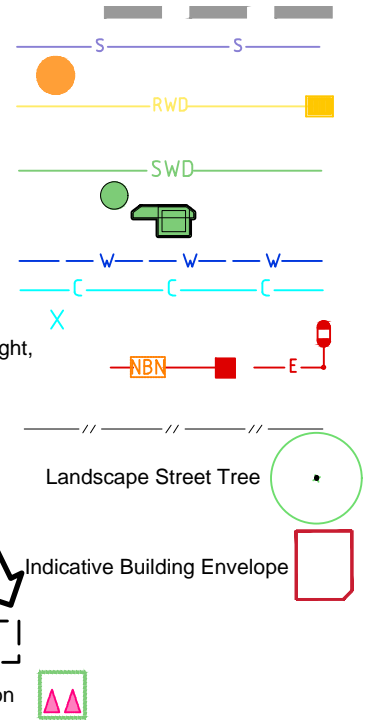
Developer Fencing

Concrete Pathway

Zero Setback Building Line

Proposed Services Easement

Indicative Parking Access Location



## ADDITIONAL NOTES:

Allotments used as Multiple Residential Allotments in accordance with the approved Plan of Development may have a reduced primary road setback to 3.0metres as noted on the Plan of Development Table.

Compaction of any fill material placed on this site shall be completed to level one inspection and testing services in accordance with AS3798-2007.

Location of sewer, roofwater, stormwater, water reticulation and electricity lines, manholes and pits are those shown on engineering design drawings, supplied by Bradlees Meinhardt, and may differ from the as-constructed location.

Plan of Development information Supplied by RPS Group PLC.

Copyright © Queensland Surveying Pty Ltd t/a Veris December 2016.

## LEGEND

Retaining Wall shown as:-

Sewer line

Sewer Manhole

Roofwater Drainage line and Catch Pit

Stormwater Drainage Line

Stormwater Manhole

Stormwater Pit

Water Main

Water Conduit

Water Service Point of Entry

Underground Electricity, Street Light, Electricity Pillar & NBN

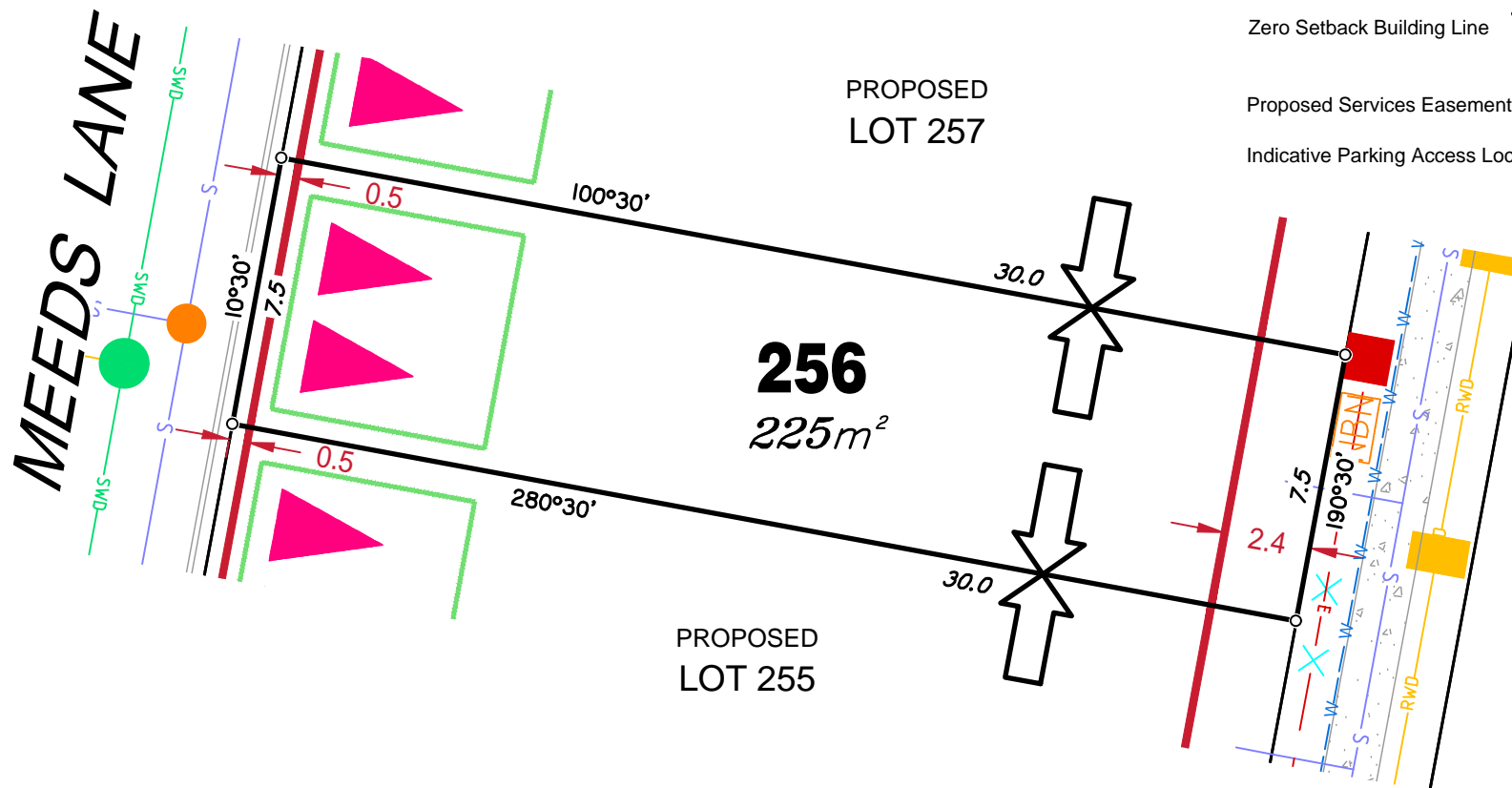
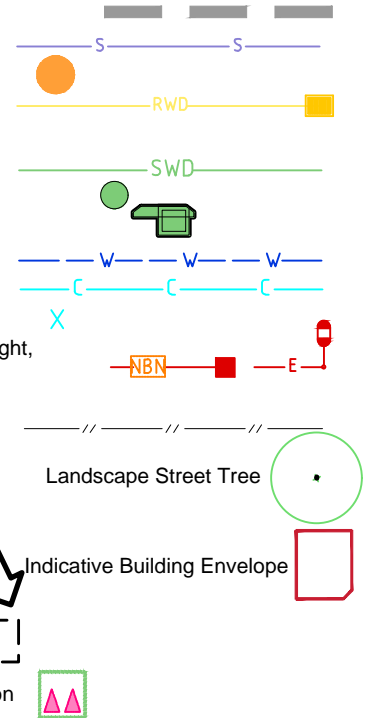
Developer Fencing

Concrete Pathway

Indicative Building Envelope

Proposed Services Easement

Indicative Parking Access Location



### ADDITIONAL NOTES:

Allotments used as Multiple Residential Allotments in accordance with the approved Plan of Development may have a reduced primary road setback to 3.0metres as noted on the Plan of Development Table.

Compaction of any fill material placed on this site shall be completed to level one inspection and testing services in accordance with AS3798-2007.

Location of sewer, roofwater, stormwater, water reticulation and electricity lines, manholes and pits are those shown on engineering design drawings, supplied by Bradlees Meinhardt, and may differ from the as-constructed location.

Plan of Development information Supplied by RPS Group PLC.

Copyright © Queensland Surveying Pty Ltd t/a Veris December 2016.

### LEGEND

Retaining Wall shown as:-

Sewer line

Sewer Manhole

Roofwater Drainage line and Catch Pit

Stormwater Drainage Line

Stormwater Manhole

Stormwater Pit

Water Main

Water Conduit

Water Service Point of Entry

Underground Electricity, Street Light, Electricity Pillar & NBN

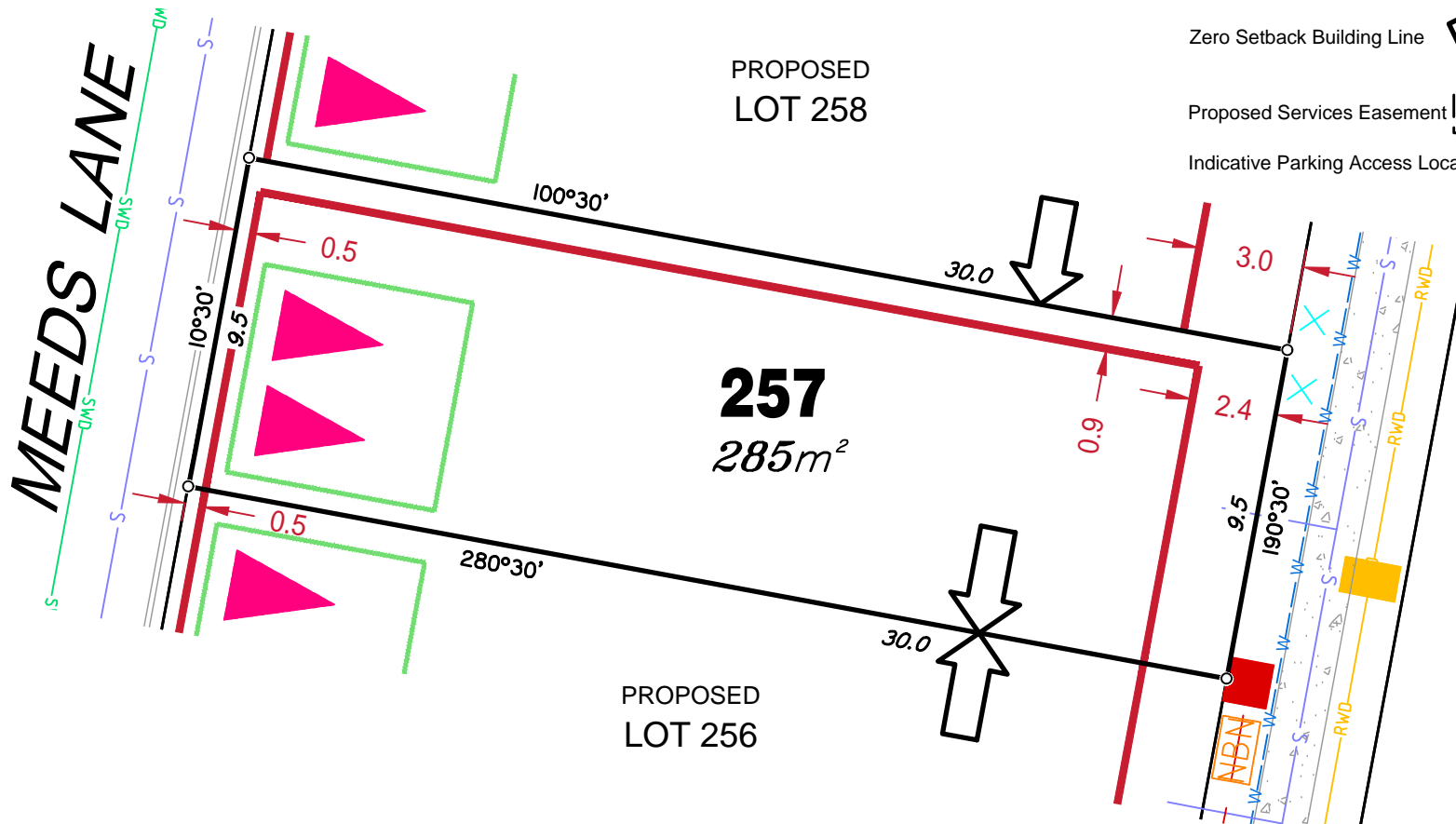
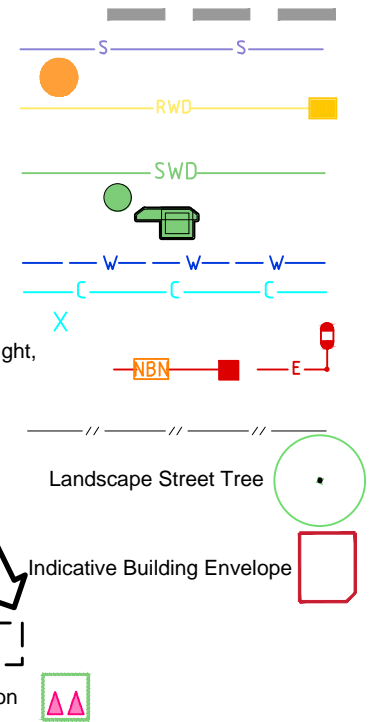
Developer Fencing

Concrete Pathway

Zero Setback Building Line

Proposed Services Easement

Indicative Parking Access Location



### ADDITIONAL NOTES:

Allotments used as Multiple Residential Allotments in accordance with the approved Plan of Development may have a reduced primary road setback to 3.0metres as noted on the Plan of Development Table.

Compaction of any fill material placed on this site shall be completed to level one inspection and testing services in accordance with AS3798-2007.

Location of sewer, roofwater, stormwater, water reticulation and electricity lines, manholes and pits are those shown on engineering design drawings, supplied by Bradlees Meinhardt, and may differ from the as-constructed location.

Plan of Development information Supplied by RPS Group PLC.

Copyright © Queensland Surveying Pty Ltd t/a Veris December 2016.

### LEGEND

Retaining Wall shown as:-

Sewer line

Sewer Manhole

Roofwater Drainage line and Catch Pit

Stormwater Drainage Line

Stormwater Manhole

Stormwater Pit

Water Main

Water Conduit

Water Service Point of Entry

Underground Electricity, Street Light, Electricity Pillar & NBN

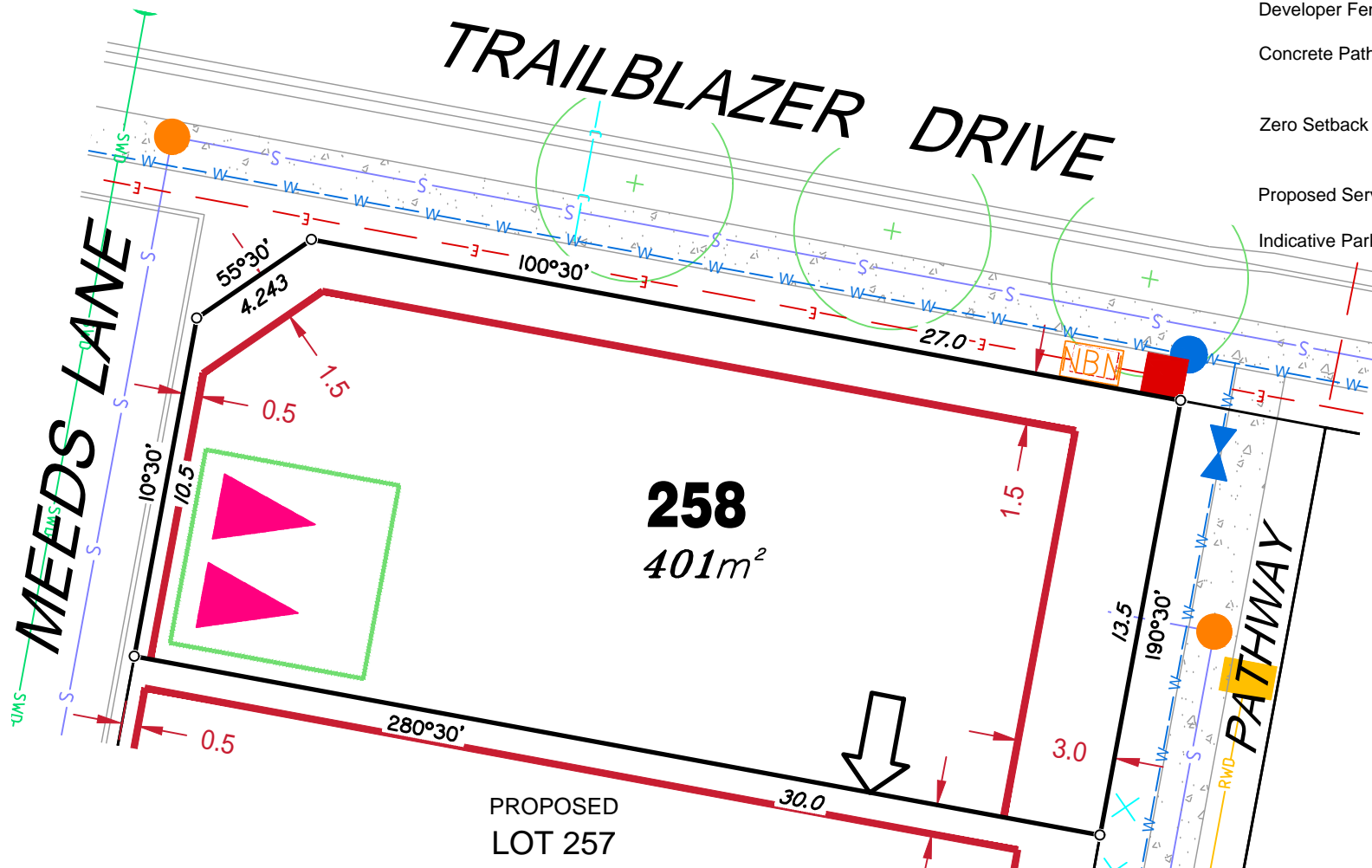
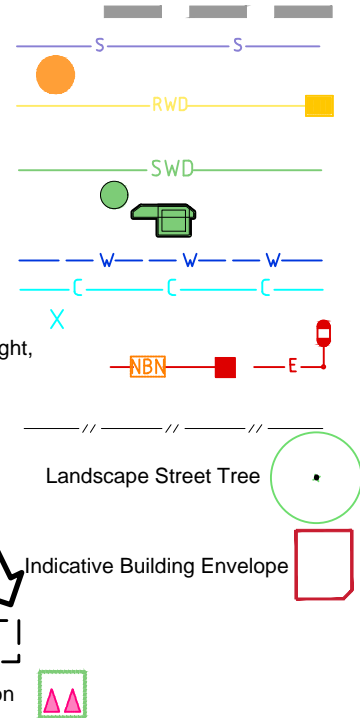
Developer Fencing

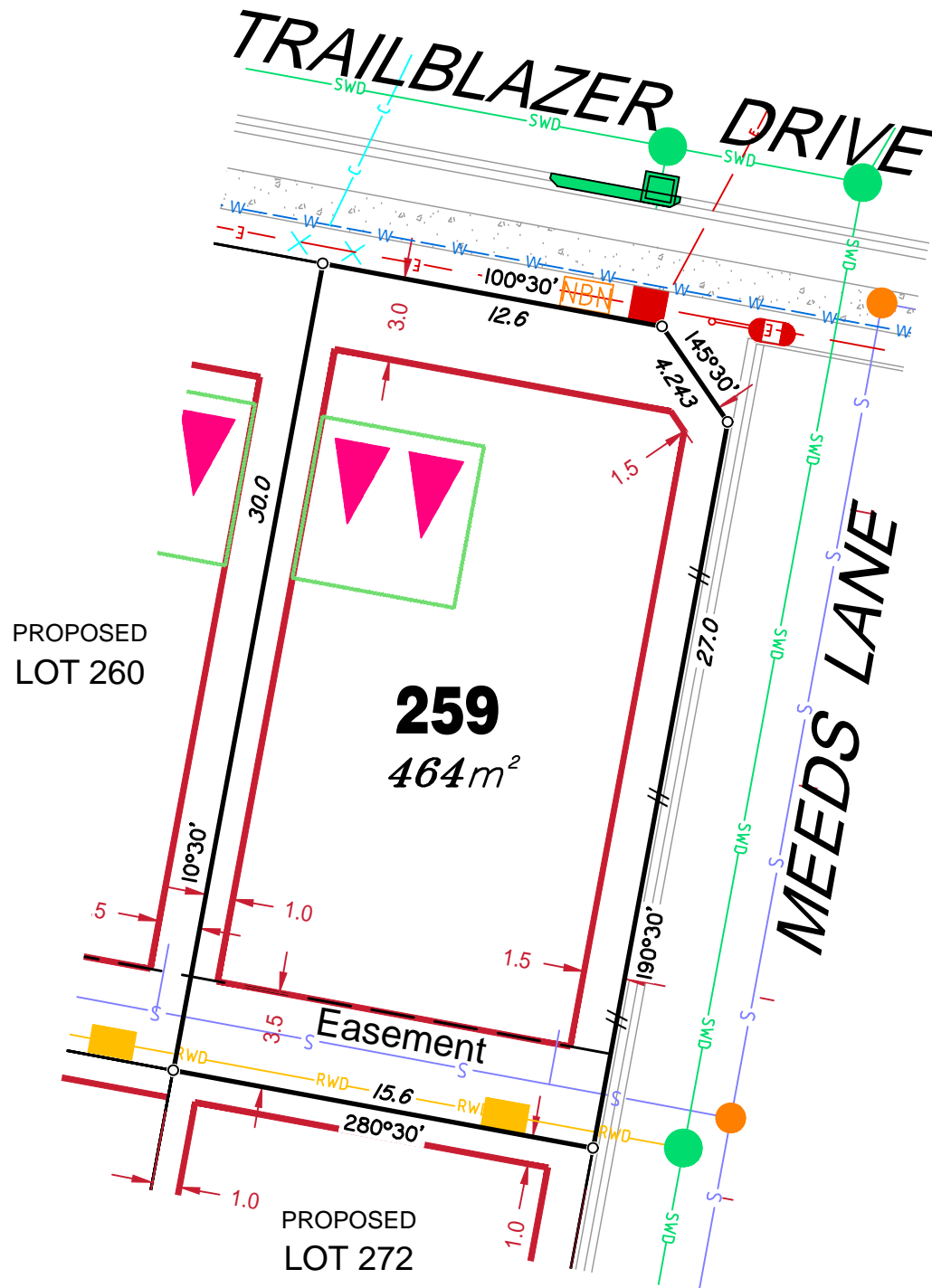
Concrete Pathway

Zero Setback Building Line

Proposed Services Easement

Indicative Parking Access Location





## LEGEND

Retaining Wall shown as:-

Sewer line

Sewer Manhole

Roofwater Drainage line and Catch Pit

Stormwater Drainage Line

Stormwater Manhole

Stormwater Pit

Water Main

Water Conduit

Water Service Point of Entry

Underground Electricity, Street Light,

Electricity Pillar & NBN

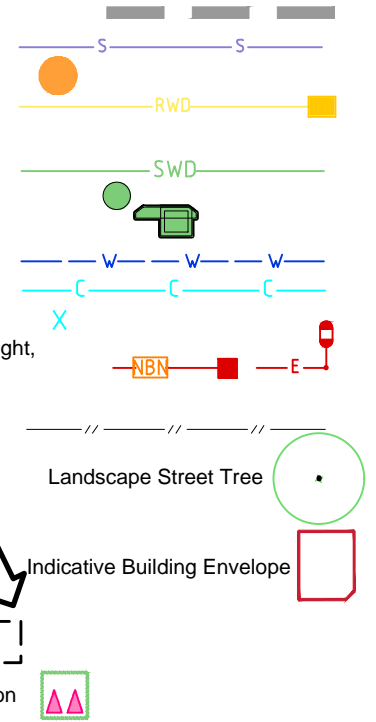
Developer Fencing

Concrete Pathway

Zero Setback Building Line

Proposed Services Easement

Indicative Parking Access Location



## ADDITIONAL NOTES:

Allotments used as Multiple Residential Allotments in accordance with the approved Plan of Development may have a reduced primary road setback to 3.0metres as noted on the Plan of Development Table.

Compaction of any fill material placed on this site shall be completed to level one inspection and testing services in accordance with AS3798-2007.

Location of sewer, roofwater, stormwater, water reticulation and electricity lines, manholes and pits are those shown on engineering design drawings, supplied by Bradlees Meinhardt, and may differ from the as-constructed location.

Plan of Development information Supplied by RPS Group PLC.

Copyright © Queensland Surveying Pty Ltd t/a Veris December 2016.

BLAZER DRIVE

SWD

SWD

SWD

10°30'

12.5

3.0

3.0

30.0

30.0

30.0

PROPOSED LOT 261

**260**

$375m^2$

PROPOSED LOT 259

10°30'

1.0

190°30'

1.0

3.5

Easement

12.5 RWD

280°30'

1.0

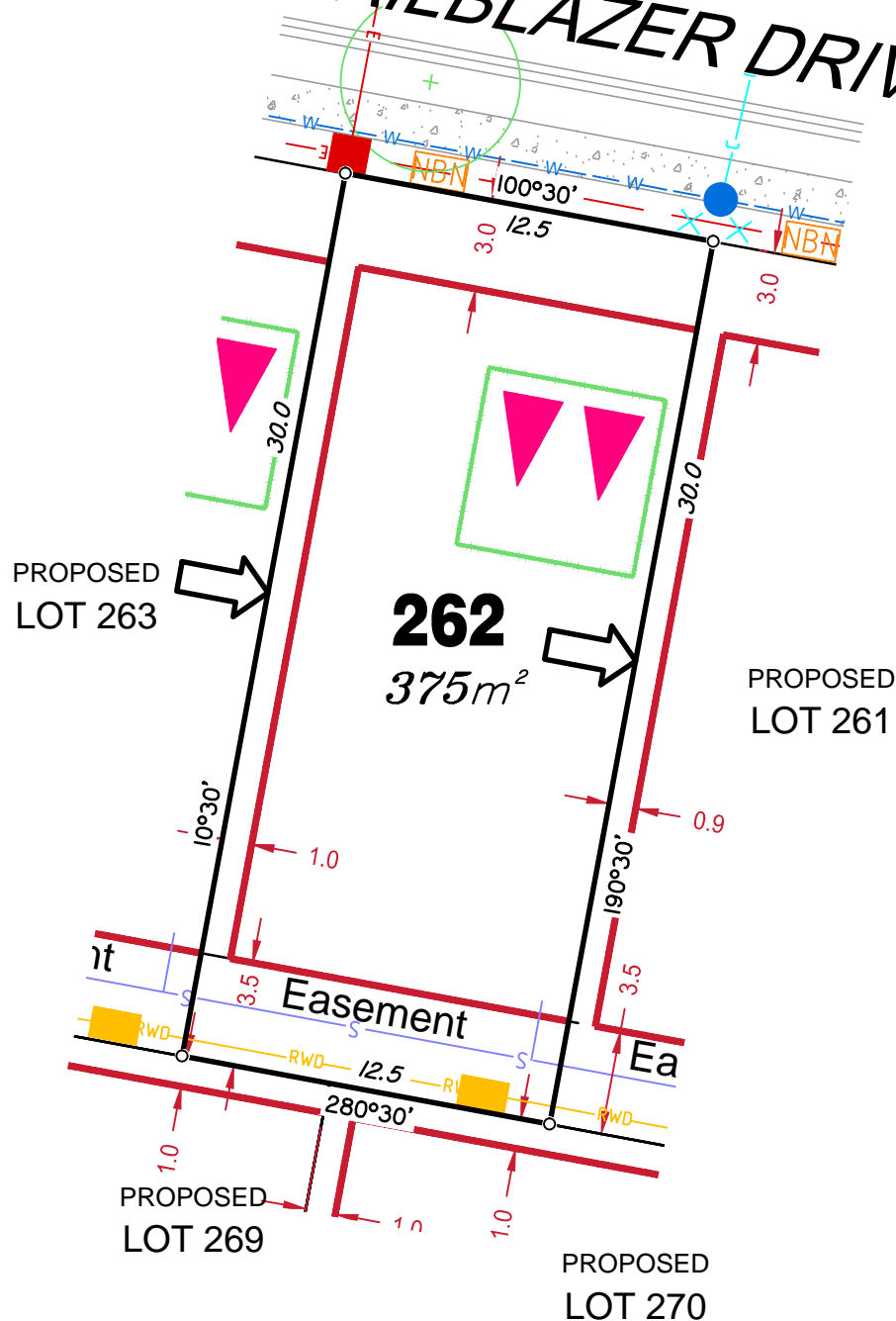
PROPOSED LOT 271

Copyright © Queensland Surveying Pty Ltd t/a Veris **January** 2017.





# TRAILBLAZER DRIVE



## LEGEND

Retaining Wall shown as:-

Sewer line

Sewer Manhole

Roofwater Drainage line and Catch Pit

Stormwater Drainage Line

Stormwater Manhole

Stormwater Pit

Water Main

Water Conduit

Water Service Point of Entry

Underground Electricity, Street Light, Electricity Pillar & NBN

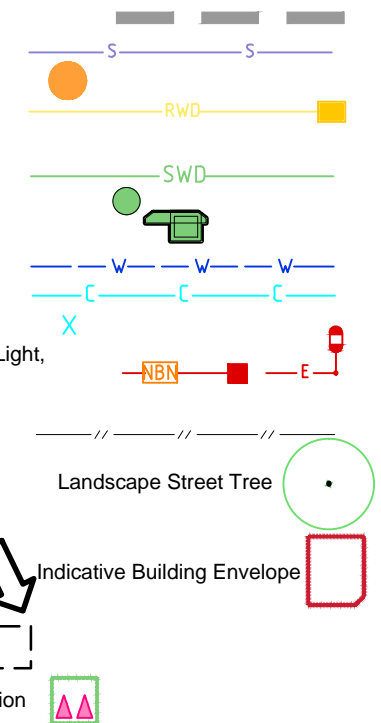
Developer Fencing

Concrete Pathway

Zero Setback Building Line

Proposed Services Easement

Indicative Parking Access Location



## ADDITIONAL NOTES:

Allotments used as Multiple Residential Allotments in accordance with the approved Plan of Development may have a reduced primary road setback to 3.0metres as noted on the Plan of Development Table.

Compaction of any fill material placed on this site shall be completed to level one inspection and testing services in accordance with AS3798-2007.

Location of sewer, roofwater, stormwater, water reticulation and electricity lines, manholes and pits are those shown on engineering design drawings, supplied by Bradlees Meinhardt, and may differ from the as-constructed location.

Plan of Development information Supplied by RPS Group PLC.

Copyright © Queensland Surveying Pty Ltd t/a Veris January 2017.

263

 $375m^2$ 

PROPOSED  
LOT 262

PROPOSED  
LOT 268

PROPOSED  
LOT 269

Retaining Wall shown as:-



— W — W — W —  
— [ — [ — [ —

A simple circuit diagram showing a battery (represented by two cells), a switch, and a light bulb connected in a loop. The switch is currently open, and the light bulb is not glowing.

\_\_\_\_\_//\_\_\_\_\_//\_\_\_\_\_//\_\_\_\_\_

Landscape Street Tree (

Indicative Building Envelope

7



Allotments used as Multiple Residential Allotments in accordance with the approved Plan of Development may have a reduced primary road setback to 3.0metres as noted on the Plan of Development Table.

Compaction of any fill material placed on this site shall be completed to level one inspection and testing services in accordance with AS3798-2007.

Location of sewer, roofwater, stormwater, water reticulation and electricity lines, manholes and pits are those shown on engineering design drawings, supplied by Bradlees Meinhardt, and may differ from the as-constructed location.

Plan of Development information Supplied by RPS Group PLC.

Copyright © Queensland Surveying Pty Ltd t/a Veris **January 2017.**

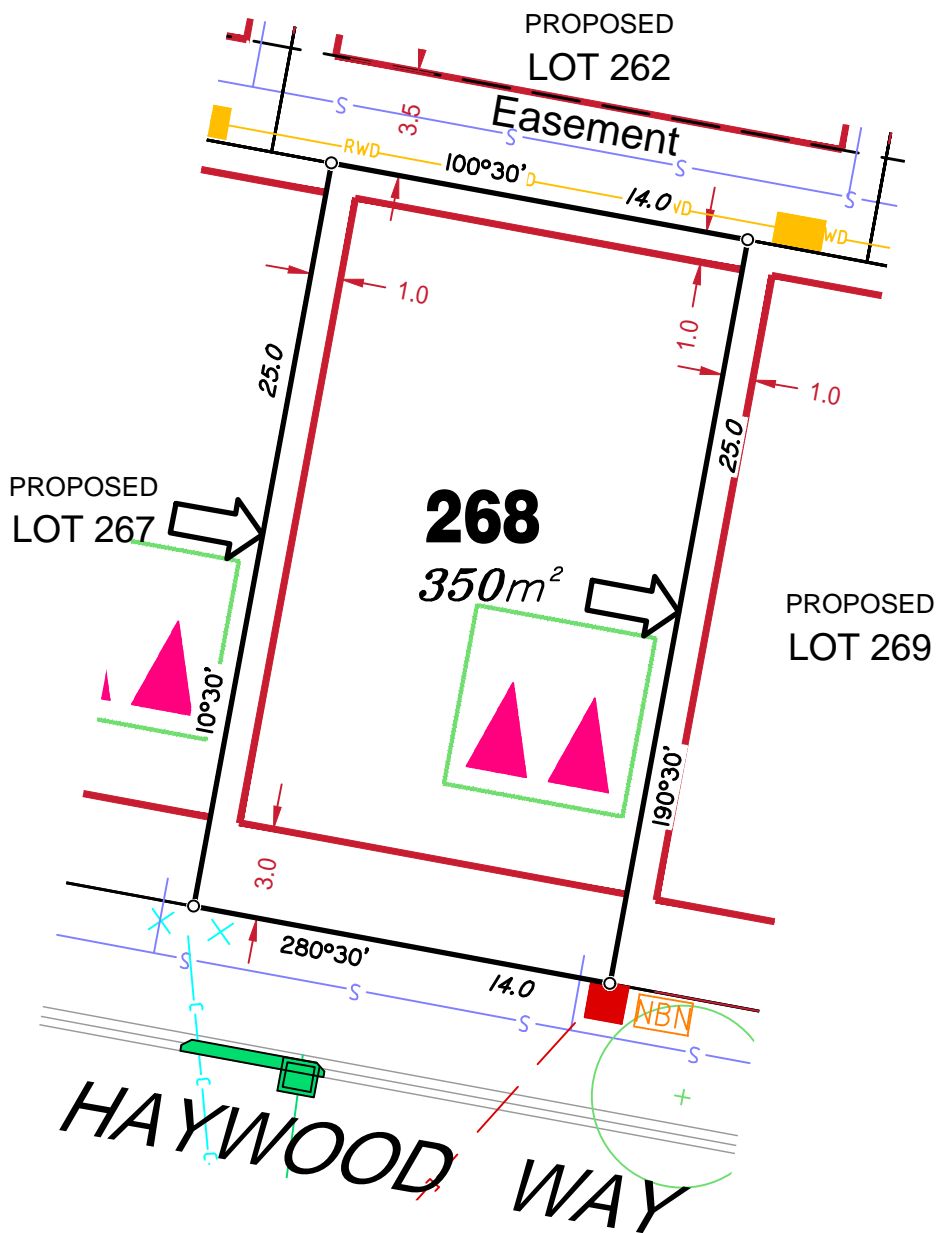












## LEGEND

Retaining Wall shown as:-

Sewer line

Sewer Manhole

Roofwater Drainage line and Catch Pit

Stormwater Drainage Line

Stormwater Manhole

Stormwater Pit

Water Main

Water Conduit

Water Service Point of Entry

Underground Electricity, Street Light, Electricity Pillar & NBN

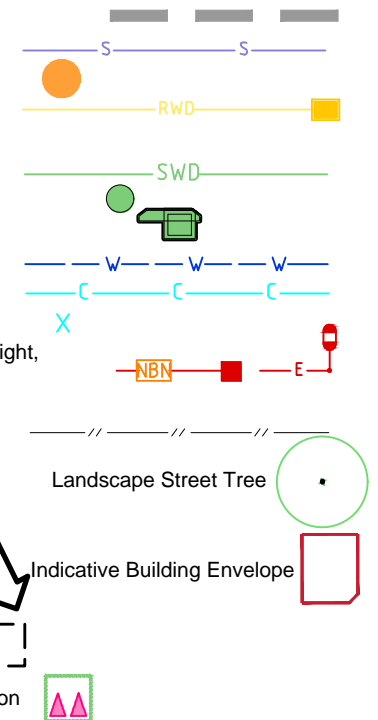
Developer Fencing

Concrete Pathway

Zero Setback Building Line

Proposed Services Easement

Indicative Parking Access Location



## ADDITIONAL NOTES:

Allotments used as Multiple Residential Allotments in accordance with the approved Plan of Development may have a reduced primary road setback to 3.0metres as noted on the Plan of Development Table.

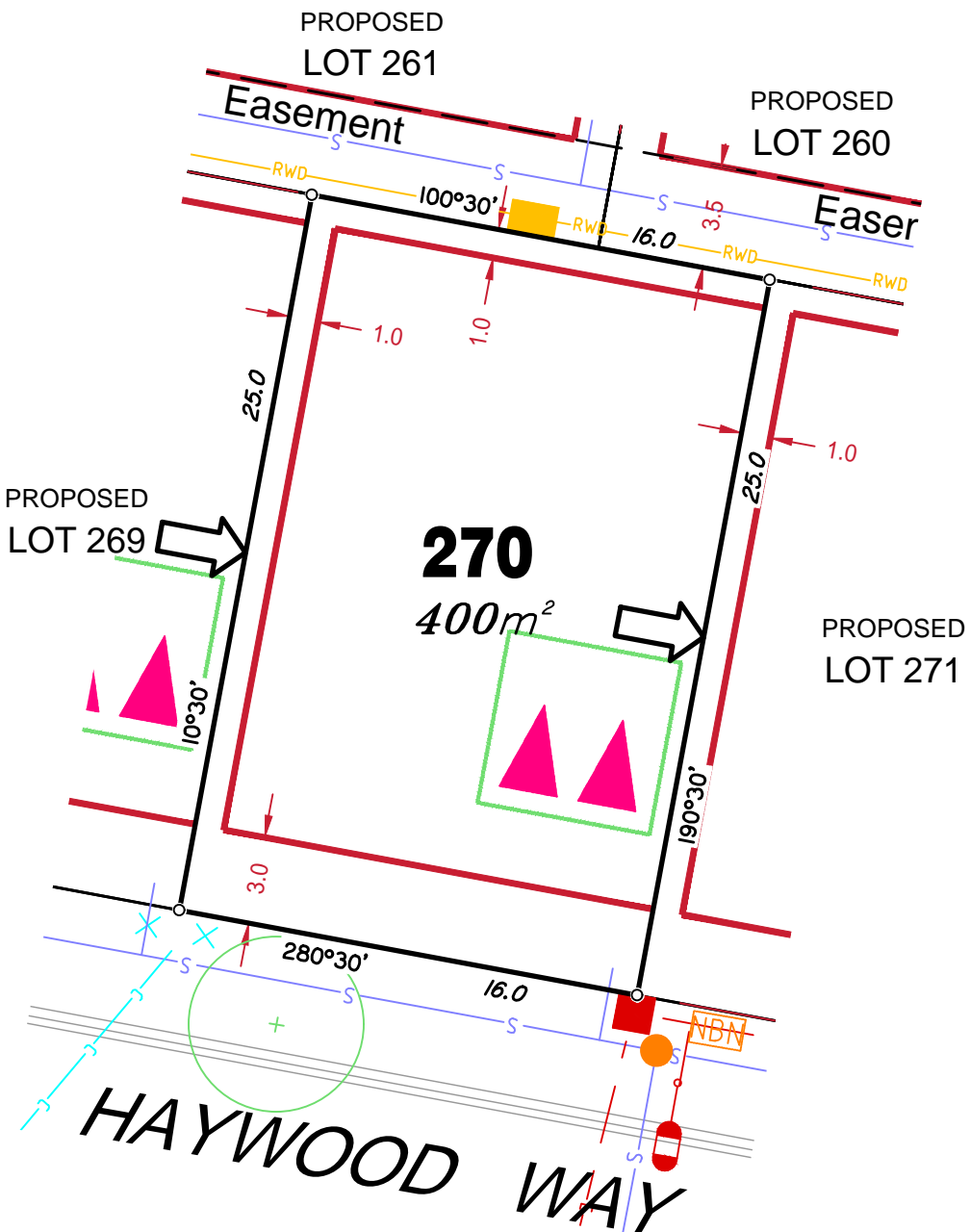
Compaction of any fill material placed on this site shall be completed to level one inspection and testing services in accordance with AS3798-2007.

Location of sewer, roofwater, stormwater, water reticulation and electricity lines, manholes and pits are those shown on engineering design drawings, supplied by Bradlees Meinhardt, and may differ from the as-constructed location.

Plan of Development information Supplied by RPS Group PLC.

Copyright © Queensland Surveying Pty Ltd t/a Veris December 2016.





## LEGEND

Retaining Wall shown as:-

Sewer line

Sewer Manhole

Roofwater Drainage line and  
Catch Pit

Stormwater Drainage Line

Stormwater Manhole

Stormwater Pit

Water Main

Water Conduit

Water Service Point of Entry

Underground Electricity, Street Light,  
Electricity Pillar & NBN

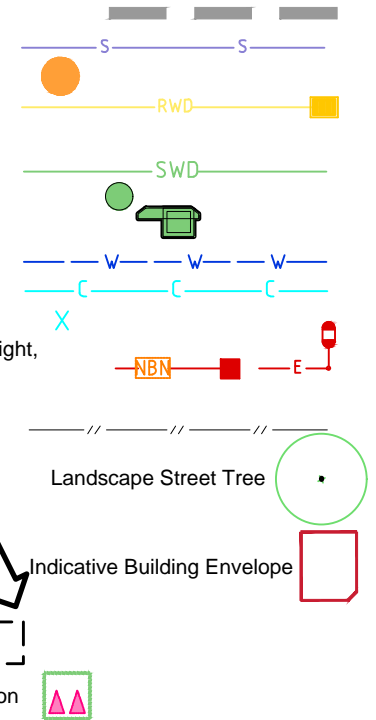
Developer Fencing

Concrete Pathway

Zero Setback Building Line

Proposed Services Easement

Indicative Parking Access Location



## ADDITIONAL NOTES:

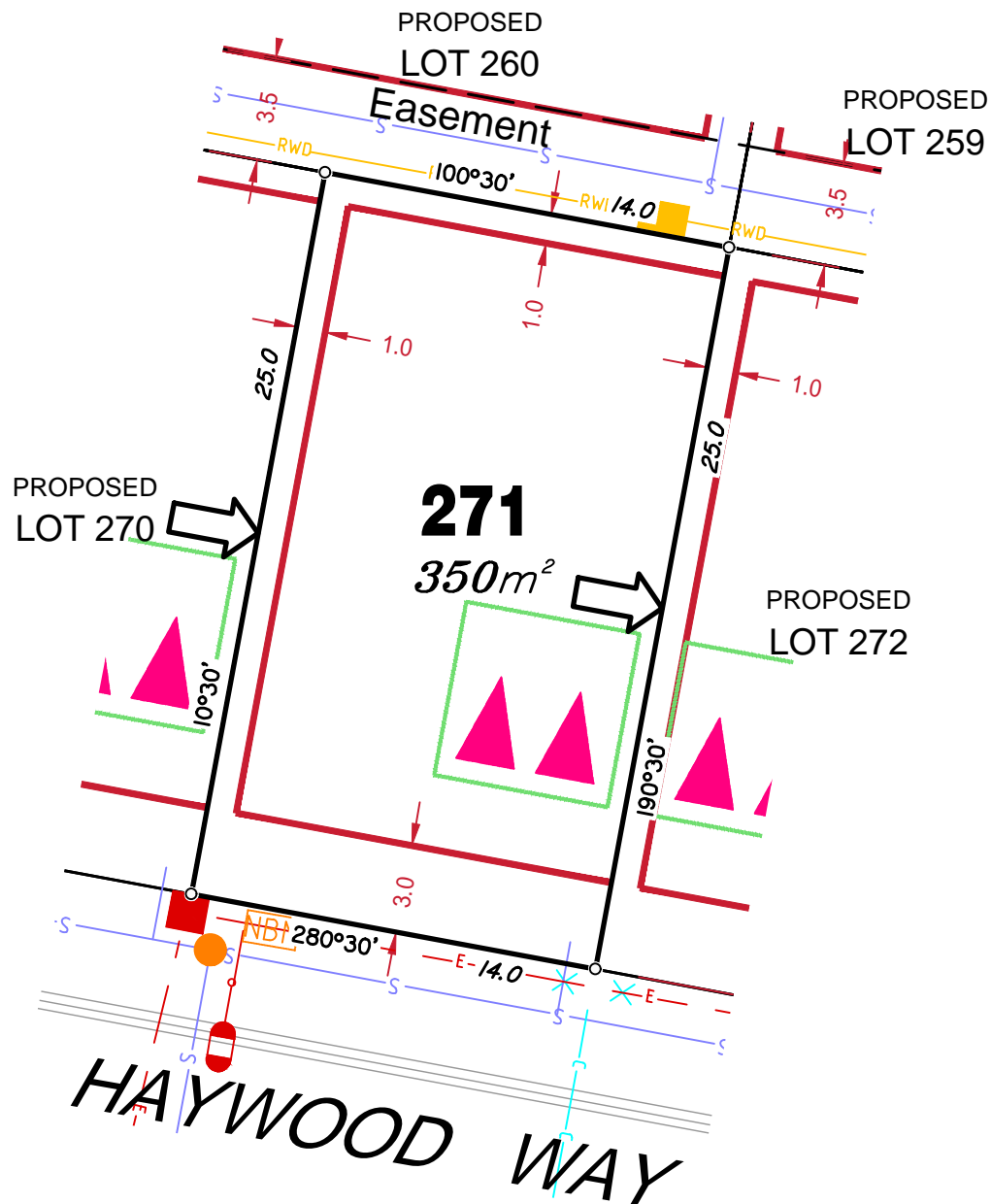
Allotments used as Multiple Residential Allotments in accordance with the approved Plan of Development may have a reduced primary road setback to 3.0metres as noted on the Plan of Development Table.

Compaction of any fill material placed on this site shall be completed to level one inspection and testing services in accordance with AS3798-2007.

Location of sewer, roofwater, stormwater, water reticulation and electricity lines, manholes and pits are those shown on engineering design drawings, supplied by Bradlees Meinhardt, and may differ from the as-constructed location.

Plan of Development information Supplied by RPS Group PLC.

Copyright © Queensland Surveying Pty Ltd t/a Veris December 2016.



## LEGEND

Retaining Wall shown as:-

Sewer line

Sewer Manhole

Roofwater Drainage line and Catch Pit

Stormwater Drainage Line

Stormwater Manhole

Stormwater Pit

Water Main

Water Conduit

Water Service Point of Entry

Underground Electricity, Street Light, Electricity Pillar & NBN

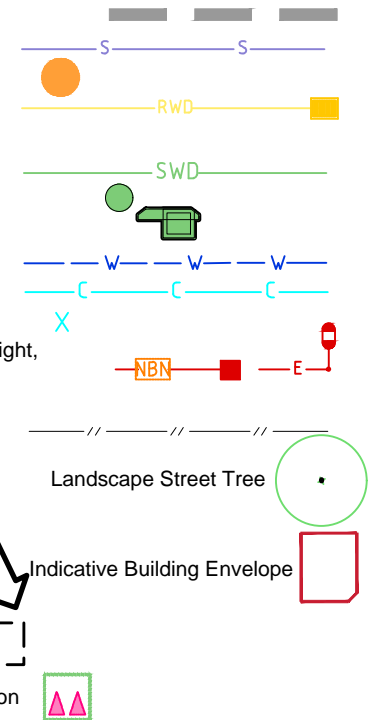
Developer Fencing

Concrete Pathway

Zero Setback Building Line

Proposed Services Easement

Indicative Parking Access Location



## ADDITIONAL NOTES:

Allotments used as Multiple Residential Allotments in accordance with the approved Plan of Development may have a reduced primary road setback to 3.0metres as noted on the Plan of Development Table.

Compaction of any fill material placed on this site shall be completed to level one inspection and testing services in accordance with AS3798-2007.

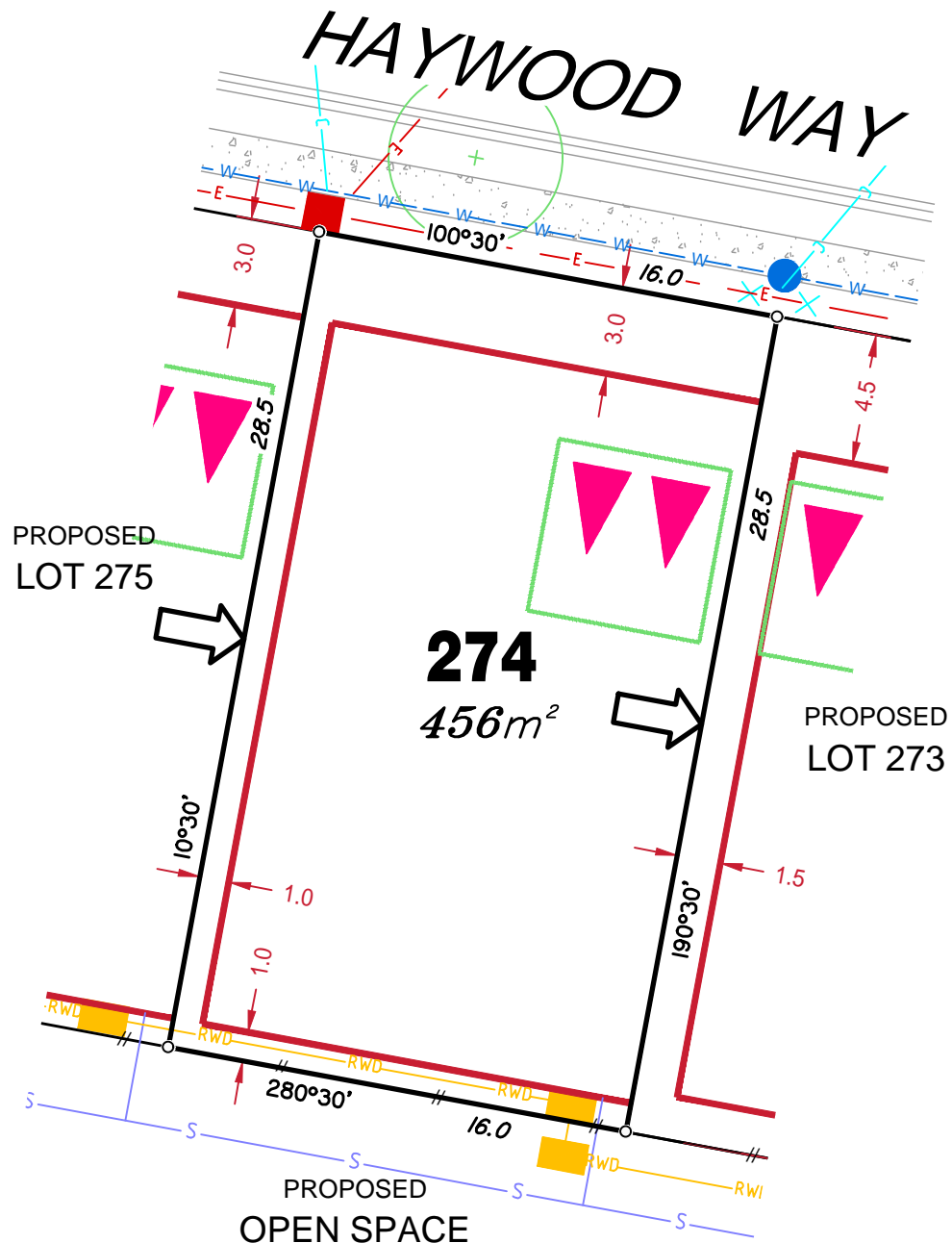
Location of sewer, roofwater, stormwater, water reticulation and electricity lines, manholes and pits are those shown on engineering design drawings, supplied by Bradlees Meinhardt, and may differ from the as-constructed location.

Plan of Development information Supplied by RPS Group PLC.

Copyright © Queensland Surveying Pty Ltd t/a Veris December 2016.







## LEGEND

Retaining Wall shown as:-

Sewer line

Sewer Manhole

Roofwater Drainage line and Catch Pit

Stormwater Drainage Line

Stormwater Manhole

Stormwater Pit

Water Main

Water Conduit

Water Service Point of Entry

Underground Electricity, Street Light, Electricity Pillar & NBN

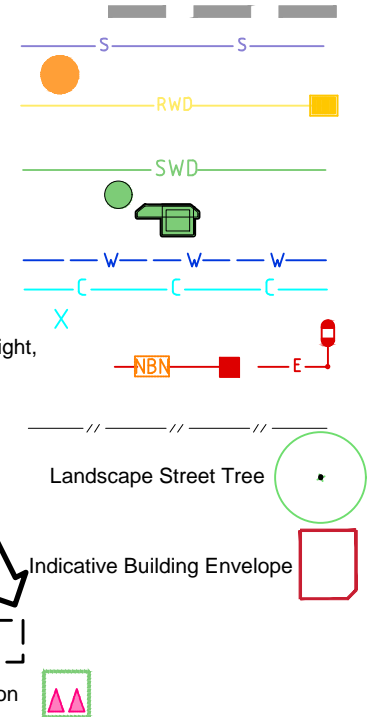
Developer Fencing

Concrete Pathway

Zero Setback Building Line

Proposed Services Easement

Indicative Parking Access Location



## ADDITIONAL NOTES:

Allotments used as Multiple Residential Allotments in accordance with the approved Plan of Development may have a reduced primary road setback to 3.0metres as noted on the Plan of Development Table.

Compaction of any fill material placed on this site shall be completed to level one inspection and testing services in accordance with AS3798-2007.

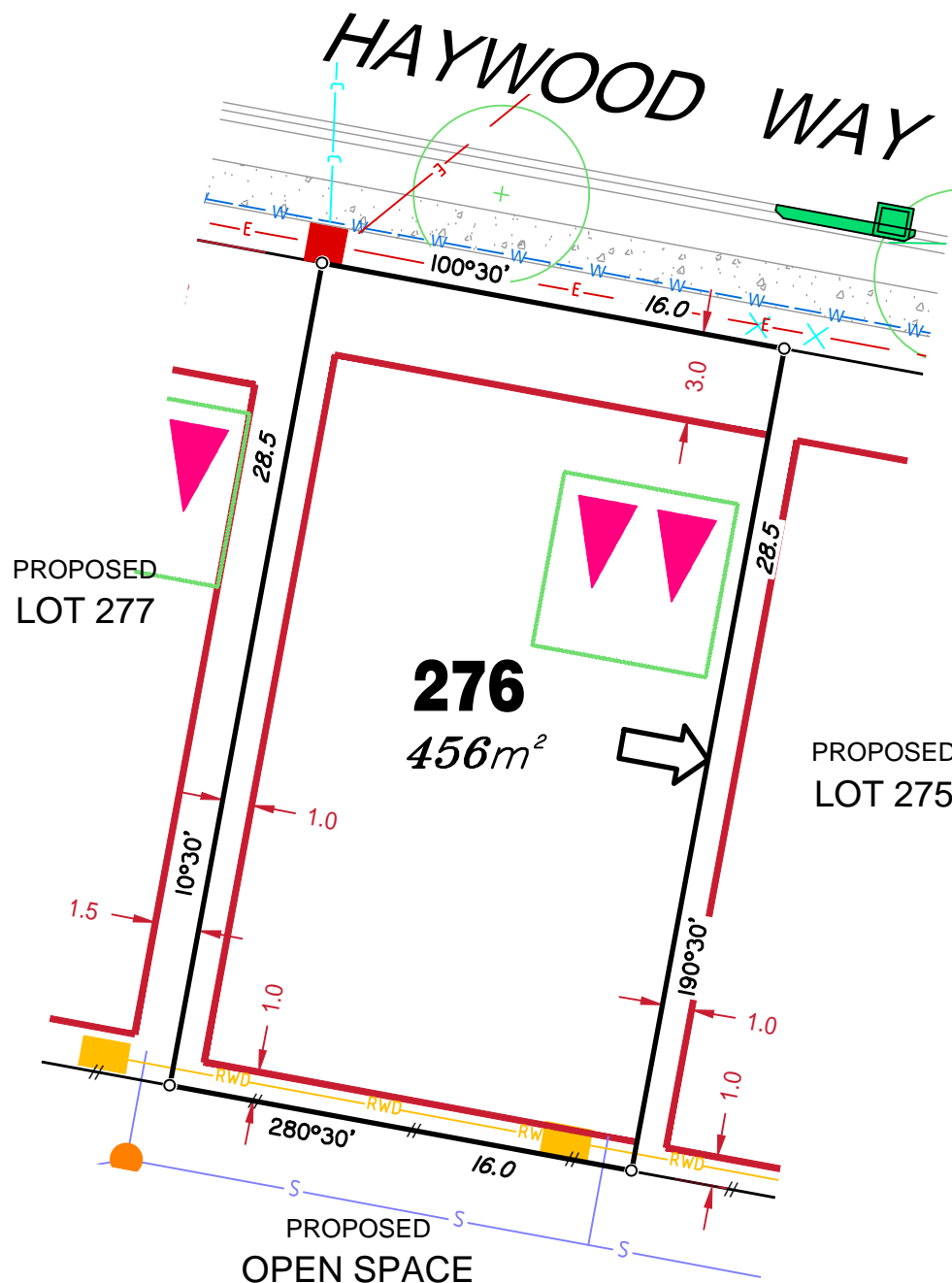
Location of sewer, roofwater, stormwater, water reticulation and electricity lines, manholes and pits are those shown on engineering design drawings, supplied by Bradlees Meinhardt, and may differ from the as-constructed location.

Plan of Development information Supplied by RPS Group PLC.

Copyright © Queensland Surveying Pty Ltd t/a Veris December 2016.







## LEGEND

Retaining Wall shown as:-

Sewer line

Sewer Manhole

Roofwater Drainage line and  
Catch Pit

Stormwater Drainage Line

Stormwater Manhole

Stormwater Pit

Water Main

Water Conduit

Water Service Point of Entry

Underground Electricity, Street Light,  
Electricity Pillar & NBN

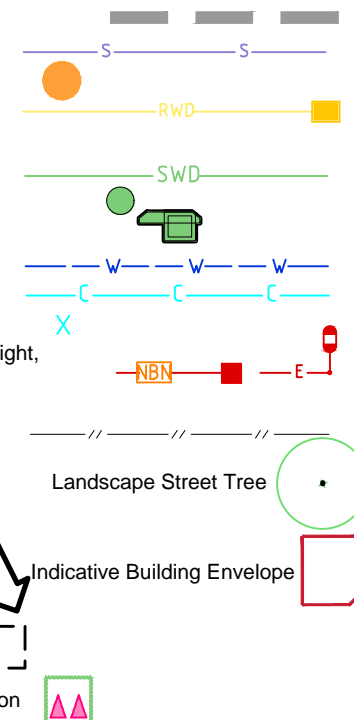
Developer Fencing

Concrete Pathway

Zero Setback Building Line

Proposed Services Easement

Indicative Parking Access Location



## ADDITIONAL NOTES:

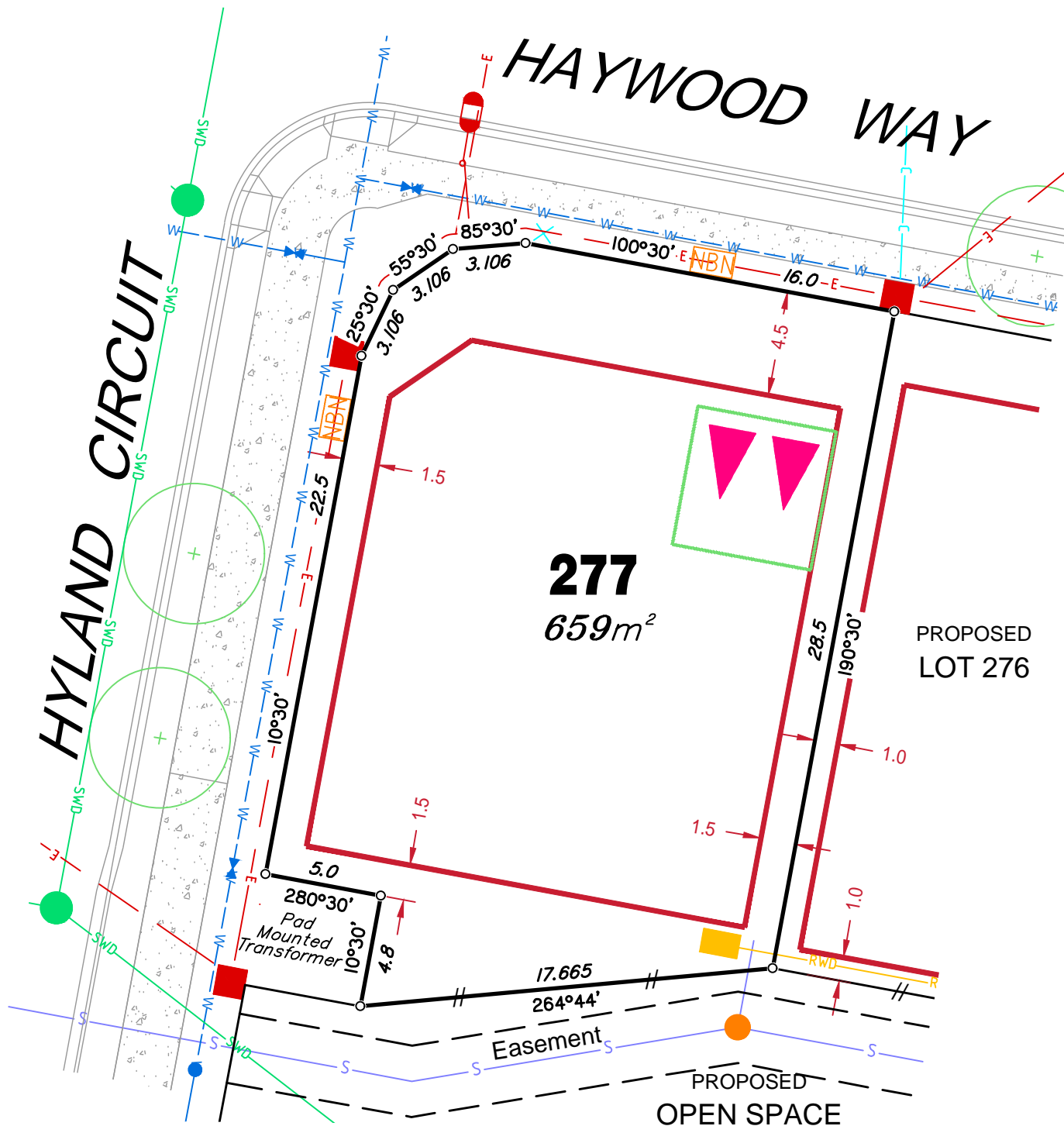
Allotments used as Multiple Residential Allotments in accordance with the approved Plan of Development may have a reduced primary road setback to 3.0metres as noted on the Plan of Development Table.

Compaction of any fill material placed on this site shall be completed to level one inspection and testing services in accordance with AS3798-2007.

Location of sewer, roofwater, stormwater, water reticulation and electricity lines, manholes and pits are those shown on engineering design drawings, supplied by Bradlees Meinhardt, and may differ from the as-constructed location.

Plan of Development information Supplied by RPS Group PLC.

Copyright © Queensland Surveying Pty Ltd t/a Veris December 2016.



## LEGEND

Retaining Wall shown as:-

Sewer line

Sewer Manhole

Roofwater Drainage line and  
Catch Pit

Stormwater Drainage Line

Stormwater Manhole

Stormwater Pit

Water Main

Water Conduit

Water Service Point of Entry

Underground Electricity, Street Light,  
Electricity Pillar & NBN

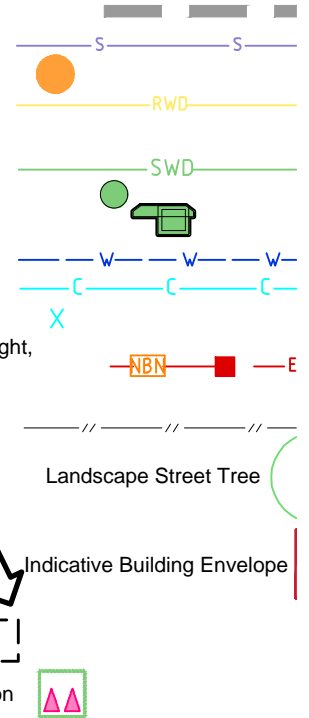
Developer Fencing

Concrete Pathway

Zero Setback Building Line

Proposed Services Easement

Indicative Parking Access Location



Indicative Building Envelope

## ADDITIONAL NOTES:

Allotments used as Multiple Residential Allotments in accordance with the approved Plan of Development may have a reduced primary setback to 3.0metres as noted on the Plan of Development Table.

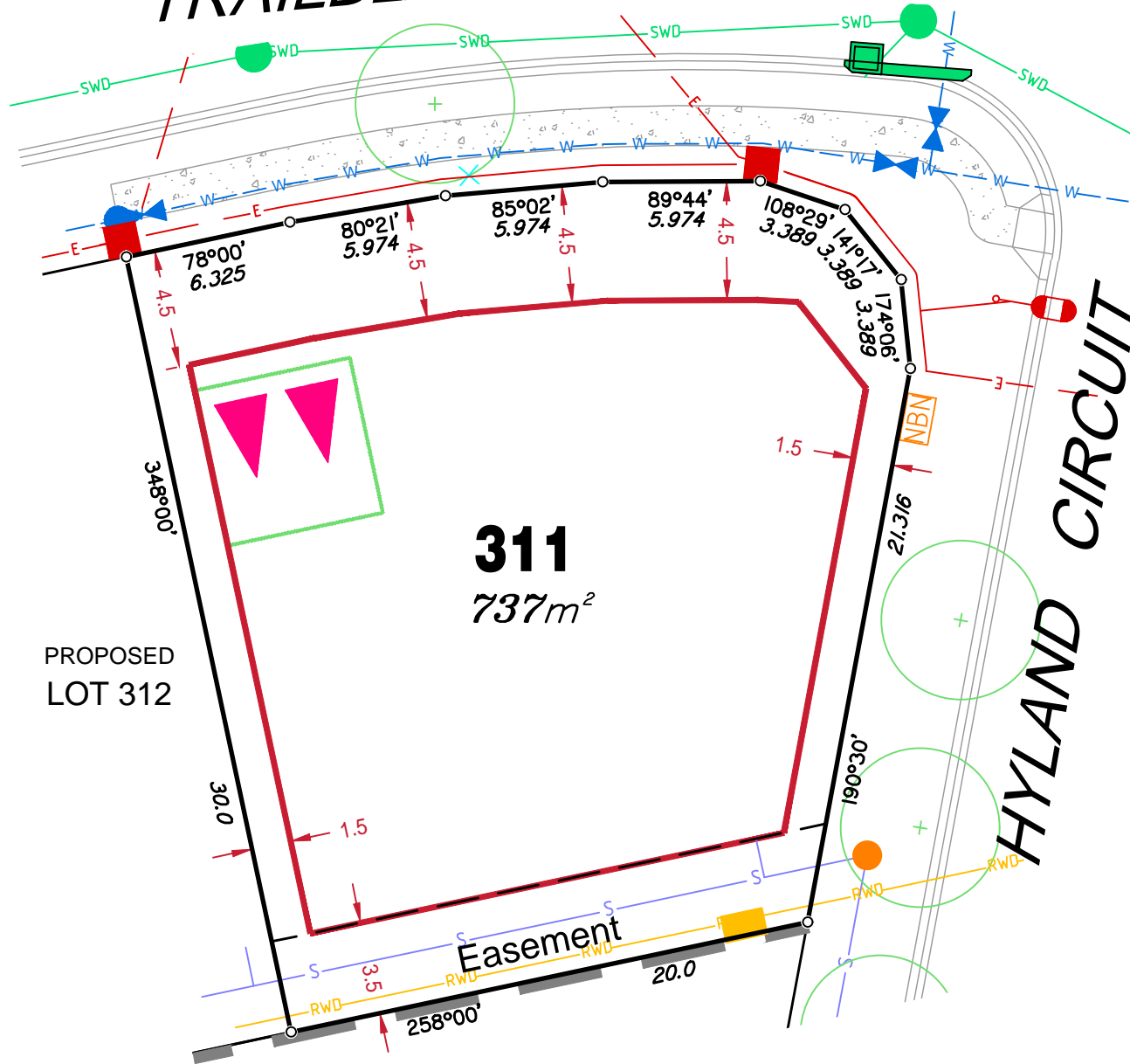
Compaction of any fill material placed on this site shall be completed to one inspection and testing services in accordance with AS3798-2007.

Location of sewer, roofwater, stormwater, water reticulation and electricity lines, manholes and pits are those shown on engineer design drawings, supplied by Bradlees Meinhardt, and may differ from the as-constructed location.

Plan of Development information Supplied by RPS Group PLC.

Copyright © Queensland Surveying Pty Ltd t/a Veris April 2017

# TRAILBLAZER DRIVE



## LEGEND

Retaining Wall shown as:-

Sewer line

Sewer Manhole

Roofwater Drainage line and  
Catch Pit

Stormwater Drainage Line

Stormwater Manhole

Stormwater Pit

Water Main

Water Conduit

Water Service Point of Entry

Underground Electricity, Street Light,  
Electricity Pillar & NBN

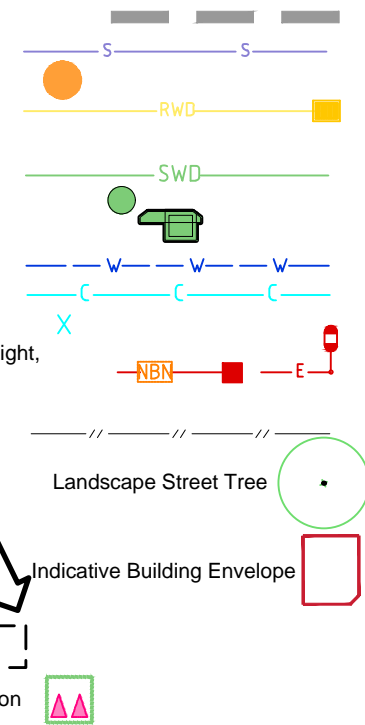
Developer Fencing

Concrete Pathway

Zero Setback Building Line

Proposed Services Easement

Indicative Parking Access Location



## ADDITIONAL NOTES:

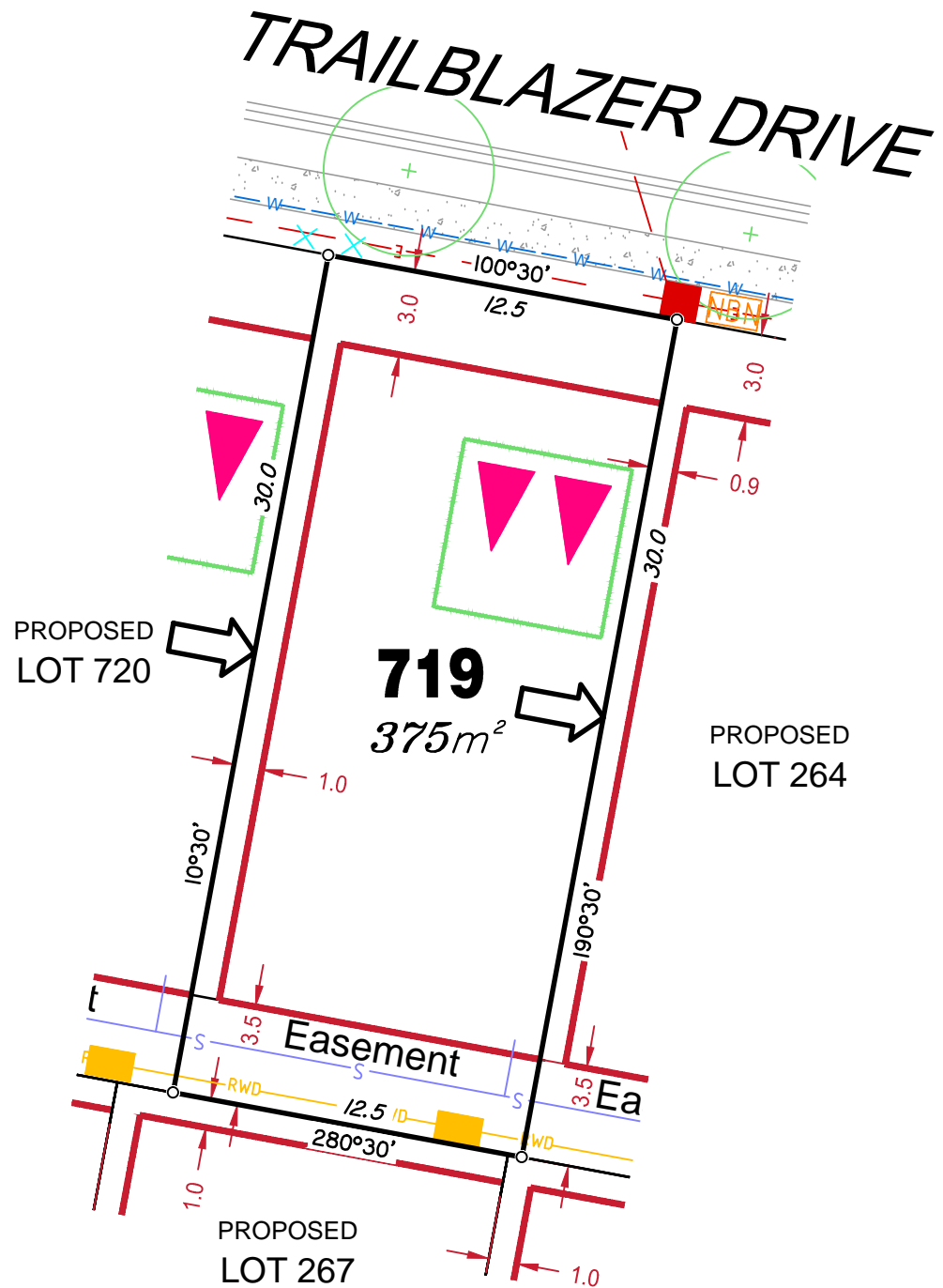
Allotments used as Multiple Residential Allotments in accordance with the approved Plan of Development may have a reduced primary road setback to 3.0metres as noted on the Plan of Development Table.

Compaction of any fill material placed on this site shall be completed to level one inspection and testing services in accordance with AS3798-2007.

Location of sewer, roofwater, stormwater, water reticulation and electricity lines, manholes and pits are those shown on engineering design drawings, supplied by Bradlees Meinhardt, and may differ from the as-constructed location.

Plan of Development information Supplied by RPS Group PLC.

Copyright © Queensland Surveying Pty Ltd t/a Veris **May** 2017.



## LEGEND

Retaining Wall shown as:-

Sewer line

Sewer Manhole

Roofwater Drainage line and  
Catch Pit

Stormwater Drainage Line

Stormwater Manhole

Stormwater Pit

Water Main

Water Conduit

Water Service Point of Entry

Underground Electricity, Street Light,  
Electricity Pillar & NBN

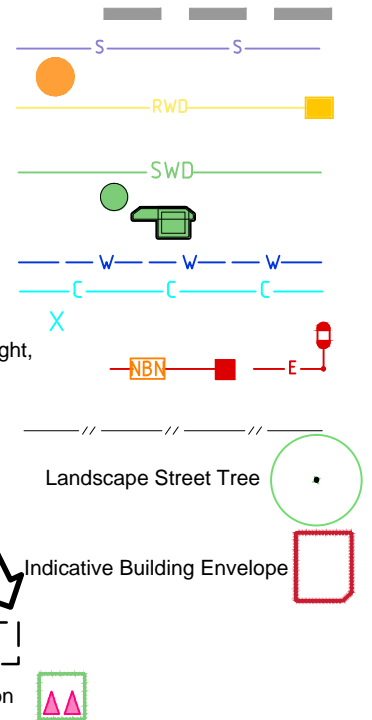
Developer Fencing

Concrete Pathway

Zero Setback Building Line

Proposed Services Easement

Indicative Parking Access Location



## ADDITIONAL NOTES:

Allotments used as Multiple Residential Allotments in accordance with the approved Plan of Development may have a reduced primary road setback to 3.0metres as noted on the Plan of Development Table.

Compaction of any fill material placed on this site shall be completed to level one inspection and testing services in accordance with AS3798-2007.

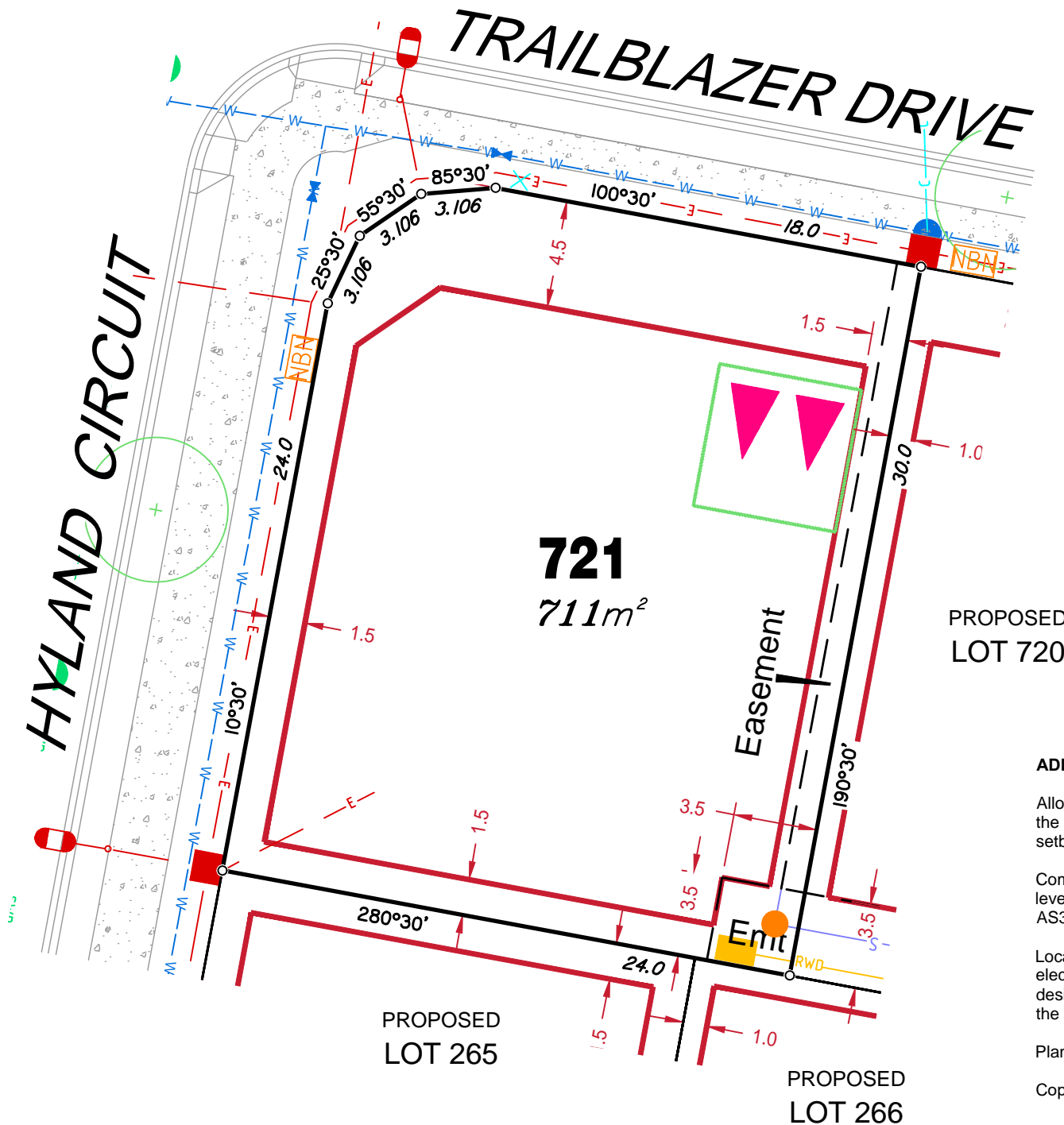
Location of sewer, roofwater, stormwater, water reticulation and electricity lines, manholes and pits are those shown on engineering design drawings, supplied by Bradlees Meinhardt, and may differ from the as-constructed location.

Plan of Development information Supplied by RPS Group PLC.

Copyright © Queensland Surveying Pty Ltd t/a Veris **January** 2017.







## LEGEND

Retaining Wall shown as:-

Sewer line

Sewer Manhole

Roofwater Drainage line and

Catch Pit

Stormwater Drainage Line

Stormwater Manhole

Stormwater Pit

Water Main

Water Conduit

Water Service Point of Entry

Underground Electricity, Street Light,

Electricity Pillar & NBN

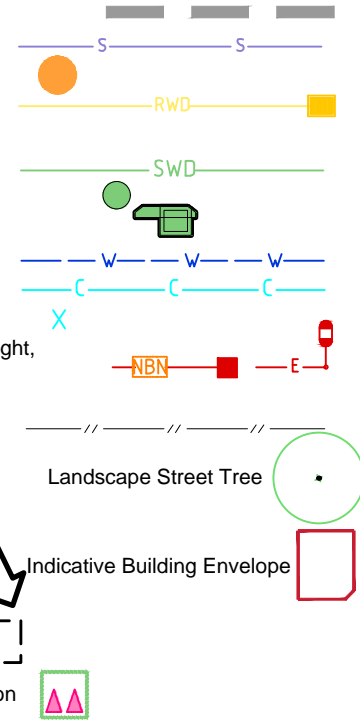
Developer Fencing

Concrete Pathway

Zero Setback Building Line

Proposed Services Easement

Indicative Parking Access Location



## ADDITIONAL NOTES:

Allotments used as Multiple Residential Allotments in accordance with the approved Plan of Development may have a reduced primary road setback to 3.0metres as noted on the Plan of Development Table.

Compaction of any fill material placed on this site shall be completed to level one inspection and testing services in accordance with AS3798-2007.

Location of sewer, roofwater, stormwater, water reticulation and electricity lines, manholes and pits are those shown on engineering design drawings, supplied by Bradlees Meinhardt, and may differ from the as-constructed location.

Plan of Development information Supplied by RPS Group PLC.

Copyright © Queensland Surveying Pty Ltd t/a Veris May 2017.