

## LEGEND

Retaining Wall shown as:-

Sewer line

Sewer Manhole

Roofwater Drainage line and  
Catch Pit

Stormwater Drainage Line

Stormwater Manhole

Stormwater Pit

Water Main

Water Conduit

Water Service Point of Entry

Underground Electricity, Street Light,  
Electricity Pillar & NBN

Developer Fencing

Concrete Pathway

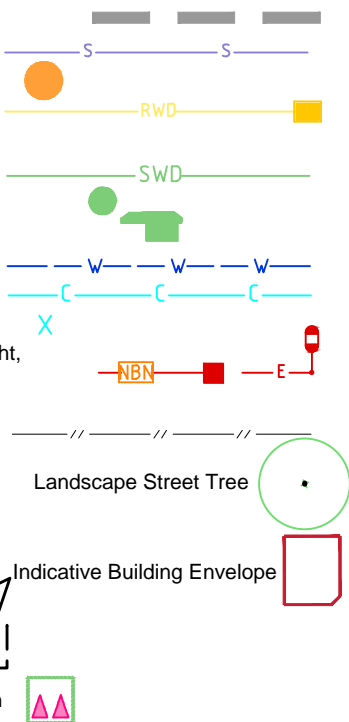
Landscape Street Tree

Zero Setback Building Line

Indicative Building Envelope

Proposed Services Easement

Indicative Parking Access Location



## ADDITIONAL NOTES:

Allotments used as Multiple Residential Allotments in accordance with the approved Plan of Development may have a reduced primary road setback to 3.0metres as noted on the Plan of Development Table.

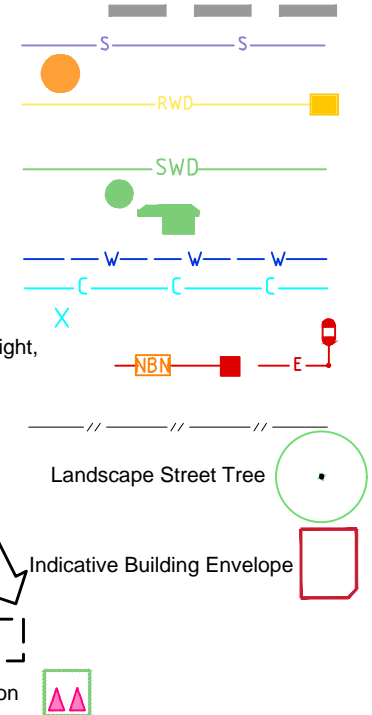
Compaction of any fill material placed on this site shall be completed to level one inspection and testing services in accordance with AS3798-2007.

Location of sewer, roofwater, stormwater, water reticulation and electricity lines, manholes and pits are those shown on engineering design drawings, supplied by Bradlees Meinhardt, and may differ from the as-constructed location.

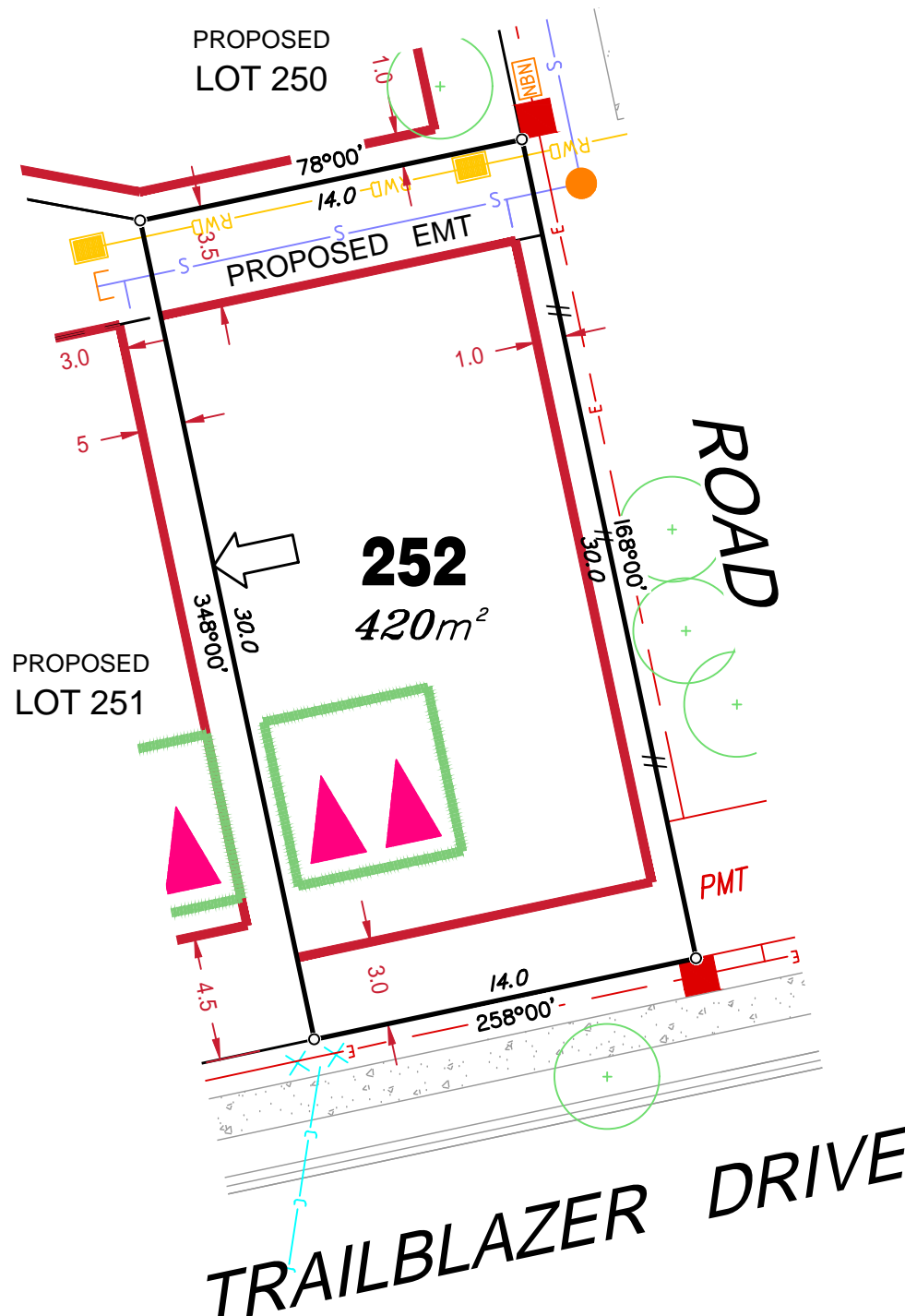
Plan of Development information Supplied by RPS Group PLC.

Copyright © Queensland Surveying Pty Ltd a Veris Company  
May 2017.

Copyright © Queensland Surveying Pty Ltd a Veris Company  
April 2017.







## LEGEND

Retaining Wall shown as:-

Sewer line

Sewer Manhole

Roofwater Drainage line and  
Catch Pit

Stormwater Drainage Line

Stormwater Manhole

Stormwater Pit

Water Main

Water Conduit

Water Service Point of Entry

Underground Electricity, Street Light,  
Electricity Pillar & NBN

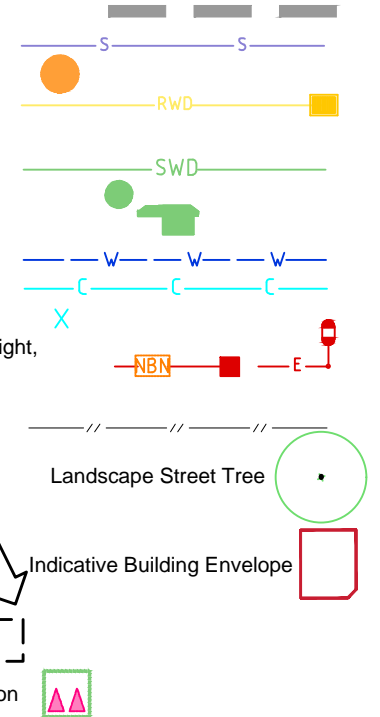
Developer Fencing

Concrete Pathway

Zero Setback Building Line

Proposed Services Easement

Indicative Parking Access Location



## ADDITIONAL NOTES:

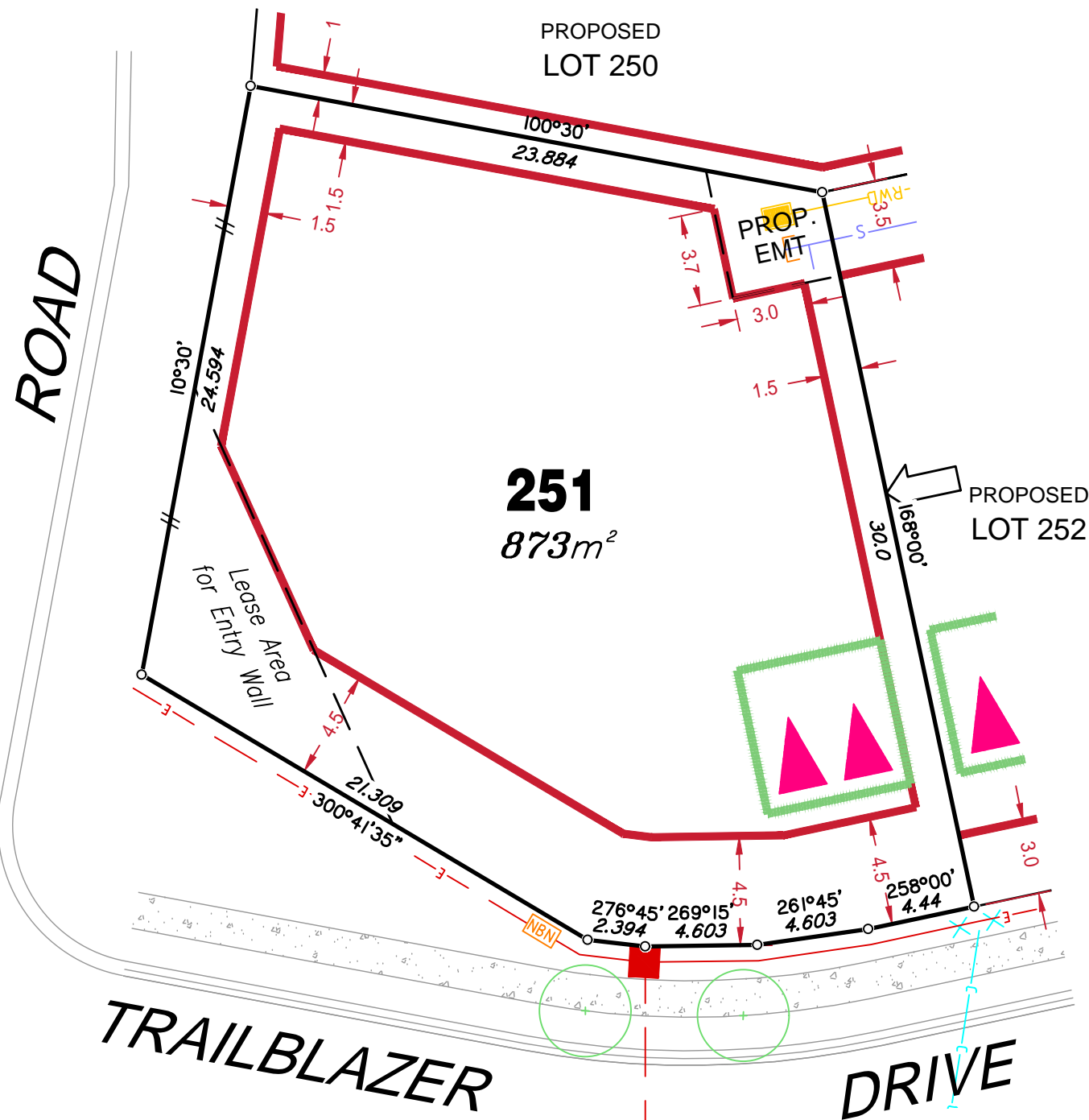
Allotments used as Multiple Residential Allotments in accordance with the approved Plan of Development may have a reduced primary road setback to 3.0metres as noted on the Plan of Development Table.

Compaction of any fill material placed on this site shall be completed to level one inspection and testing services in accordance with AS3798-2007.

Location of sewer, roofwater, stormwater, water reticulation and electricity lines, manholes and pits are those shown on engineering design drawings, supplied by Bradlees Meinhardt, and may differ from the as-constructed location.

Plan of Development information Supplied by RPS Group PLC.

Copyright © Queensland Surveying Pty Ltd a Veris Company  
April 2017.



## LEGEND

Retaining Wall shown as:-

Sewer line

Sewer Manhole

Roofwater Drainage line and Catch Pit

Stormwater Drainage Line

Stormwater Manhole

Stormwater Pit

Water Main

Water Conduit

Water Service Point of Entry

Underground Electricity, Street Light, Electricity Pillar & NBN

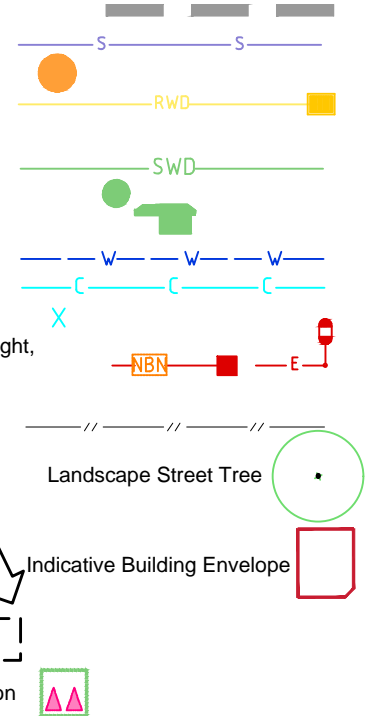
Developer Fencing

Concrete Pathway

Zero Setback Building Line

Proposed Services Easement

Indicative Parking Access Location



## ADDITIONAL NOTES:

Allotments used as Multiple Residential Allotments in accordance with the approved Plan of Development may have a reduced primary road setback to 3.0metres as noted on the Plan of Development Table.

Compaction of any fill material placed on this site shall be completed to level one inspection and testing services in accordance with AS3798-2007.

Location of sewer, roofwater, stormwater, water reticulation and electricity lines, manholes and pits are those shown on engineering design drawings, supplied by Bradlees Meinhardt, and may differ from the as-constructed location.

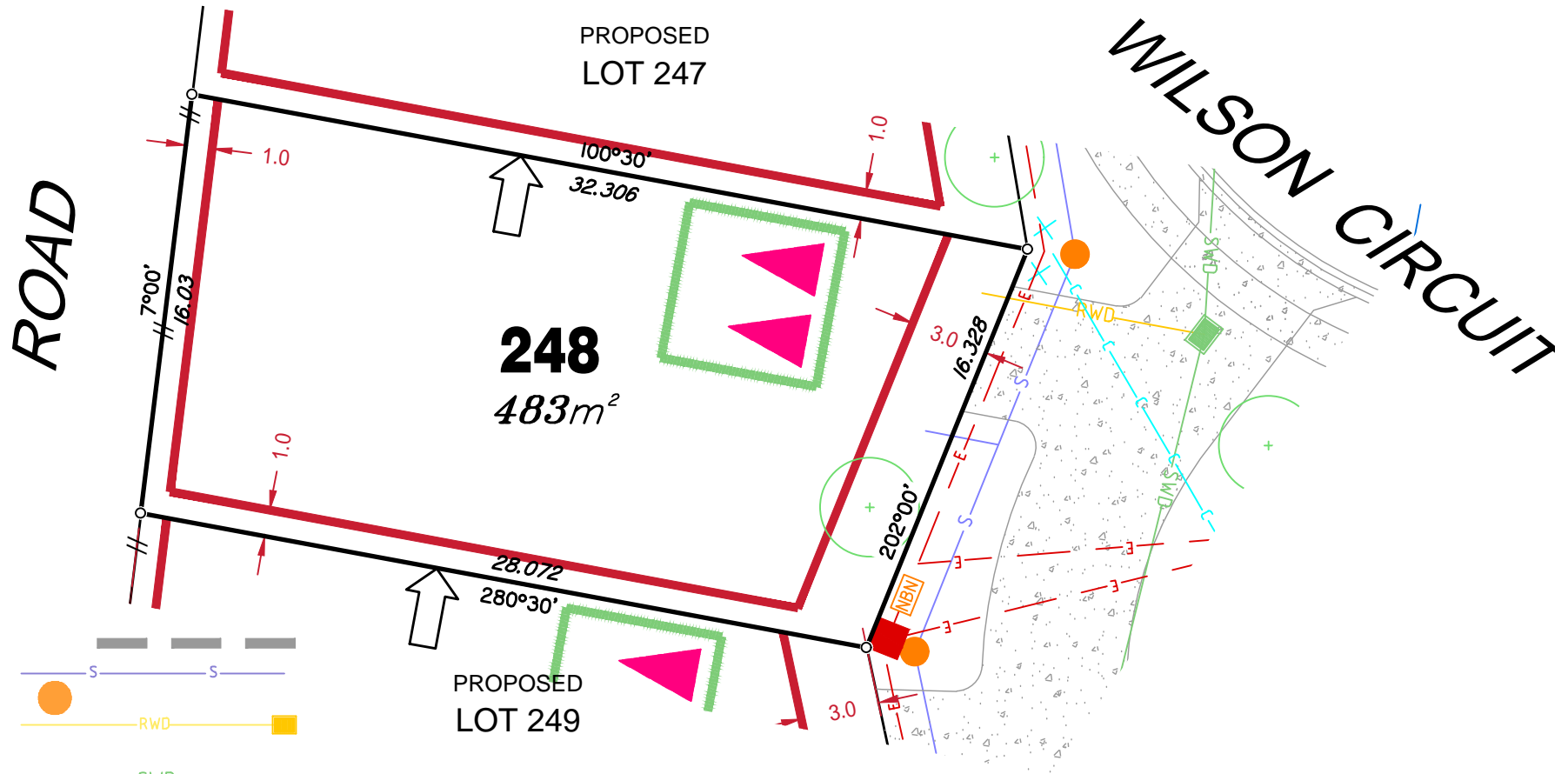
Plan of Development information Supplied by RPS Group PLC.

Copyright © Queensland Surveying Pty Ltd a Veris Company  
May 2017.









## LEGEND

Retaining Wall shown as:-

Sewer line

Sewer Manhole

Roofwater Drainage line and Catch Pit

Stormwater Drainage Line

Stormwater Manhole

Stormwater Pit

Water Main

Water Conduit

Water Service Point of Entry

Underground Electricity, Street Light,

Electricity Pillar & NBN

Developer Fencing

Concrete Pathway

Landscape Street Tree

Zero Setback Building Line

Indicative Building Envelope

Proposed Services Easement

Indicative Parking Access Location

## ADDITIONAL NOTES:

Allotments used as Multiple Residential Allotments in accordance with the approved Plan of Development may have a reduced primary road setback to 3.0metres as noted on the Plan of Development Table.

Compaction of any fill material placed on this site shall be completed to level one inspection and testing services in accordance with AS3798-2007.

Location of sewer, roofwater, stormwater, water reticulation and electricity lines, manholes and pits are those shown on engineering design drawings, supplied by Bradlees Meinhardt, and may differ from the as-constructed location.

Plan of Development information Supplied by RPS Group PLC.

Copyright © Queensland Surveying Pty Ltd a Veris Company  
May 2017.





## LEGEND

Retaining Wall shown as:-

Sewer line

Sewer Manhole

Roofwater Drainage line and  
Catch Pit

Stormwater Drainage Line

Stormwater Manhole

Stormwater Pit

Water Main

Water Conduit

Water Service Point of Entry

Underground Electricity, Street Light,  
Electricity Pillar & NBN

Developer Fencing

Concrete Pathway

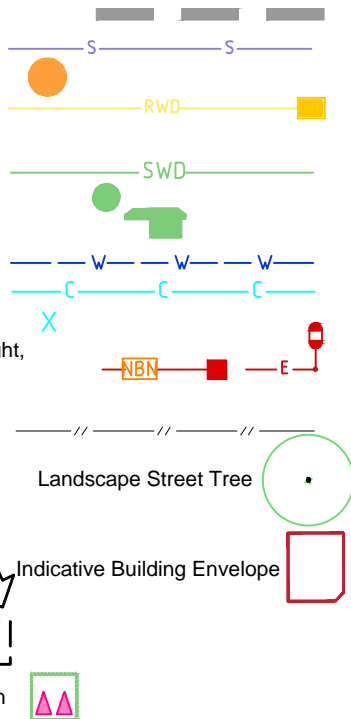
Landscape Street Tree

Zero Setback Building Line

Indicative Building Envelope

Proposed Services Easement

Indicative Parking Access Location



ROAD

246

457m<sup>2</sup>

PROPOSED  
LOT 247

PROPOSED  
LOT 245

WILSON CIRCUIT

## ADDITIONAL NOTES:

Allotments used as Multiple Residential Allotments in accordance with the approved Plan of Development may have a reduced primary road setback to 3.0metres as noted on the Plan of Development Table.

Compaction of any fill material placed on this site shall be completed to level one inspection and testing services in accordance with AS3798-2007.

Location of sewer, roofwater, stormwater, water reticulation and electricity lines, manholes and pits are those shown on engineering design drawings, supplied by Bradlees Meinhardt, and may differ from the as-constructed location.

Plan of Development information Supplied by RPS Group PLC.

Copyright © Queensland Surveying Pty Ltd a Veris Company  
May 2017.

## LEGEND

Retaining Wall shown as:-

Sewer line

Sewer Manhole

Roofwater Drainage line and  
Catch Pit

Stormwater Drainage Line

Stormwater Manhole

Stormwater Pit

Water Main

Water Conduit

Water Service Point of Entry

Underground Electricity, Street Light,  
Electricity Pillar & NBN

Developer Fencing

Concrete Pathway

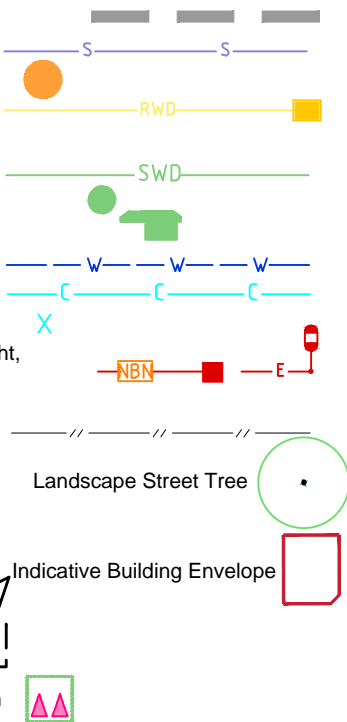
Landscape Street Tree

Zero Setback Building Line

Indicative Building Envelope

Proposed Services Easement

Indicative Parking Access Location



## ADDITIONAL NOTES:

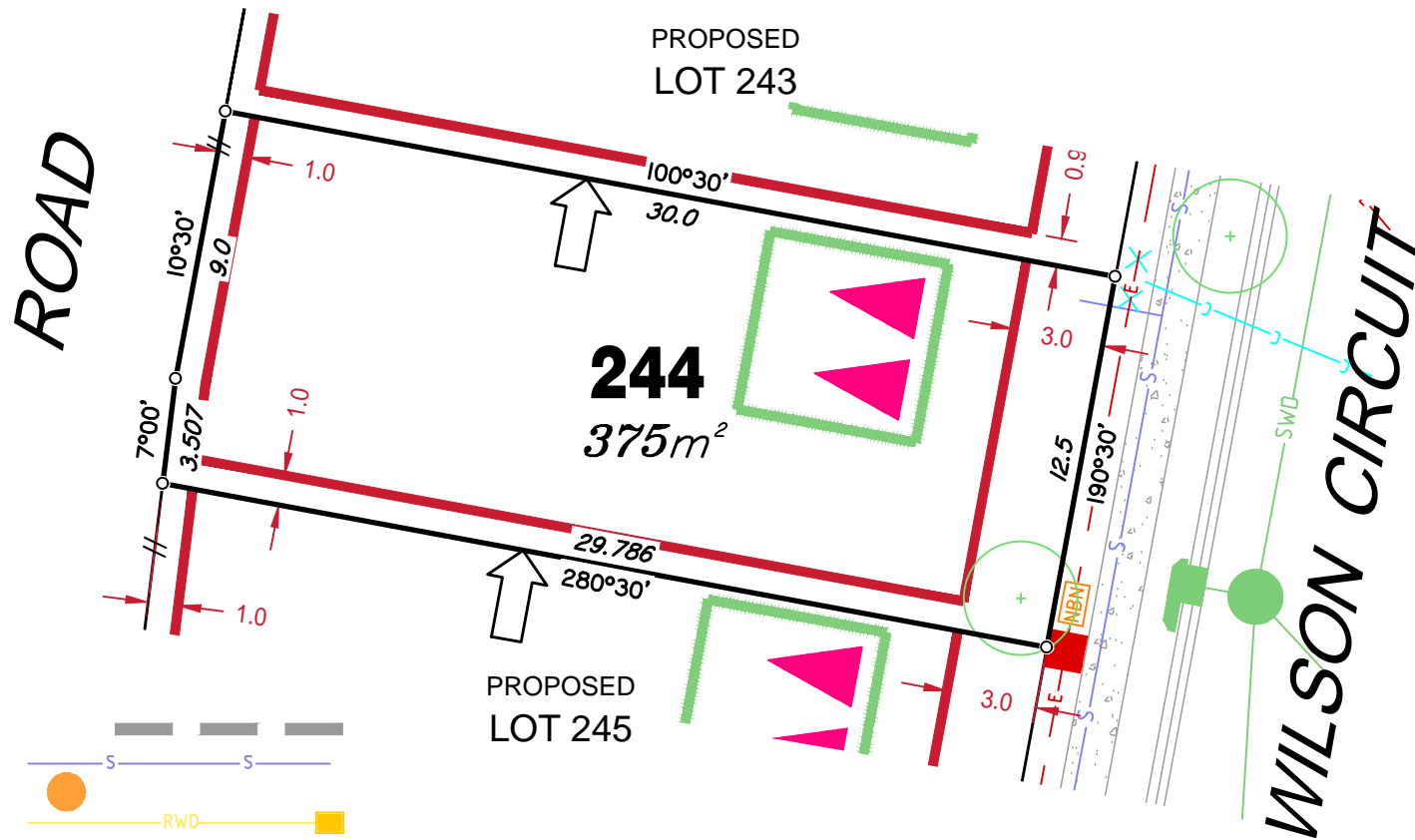
Allotments used as Multiple Residential Allotments in accordance with the approved Plan of Development may have a reduced primary road setback to 3.0metres as noted on the Plan of Development Table.

Compaction of any fill material placed on this site shall be completed to level one inspection and testing services in accordance with AS3798-2007.

Location of sewer, roofwater, stormwater, water reticulation and electricity lines, manholes and pits are those shown on engineering design drawings, supplied by Bradlees Meinhardt, and may differ from the as-constructed location.

Plan of Development information Supplied by RPS Group PLC.

Copyright © Queensland Surveying Pty Ltd a Veris Company  
May 2017.



## LEGEND

Retaining Wall shown as:-

Sewer line

Sewer Manhole

Roofwater Drainage line and  
Catch Pit

Stormwater Drainage Line

Stormwater Manhole

Stormwater Pit

Water Main

Water Conduit

Water Service Point of Entry

Underground Electricity, Street Light,  
Electricity Pillar & NBN

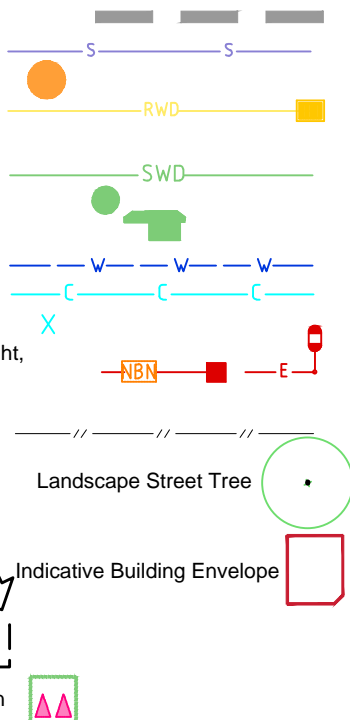
Developer Fencing

Concrete Pathway

Zero Setback Building Line

Proposed Services Easement

Indicative Parking Access Location



## ADDITIONAL NOTES:

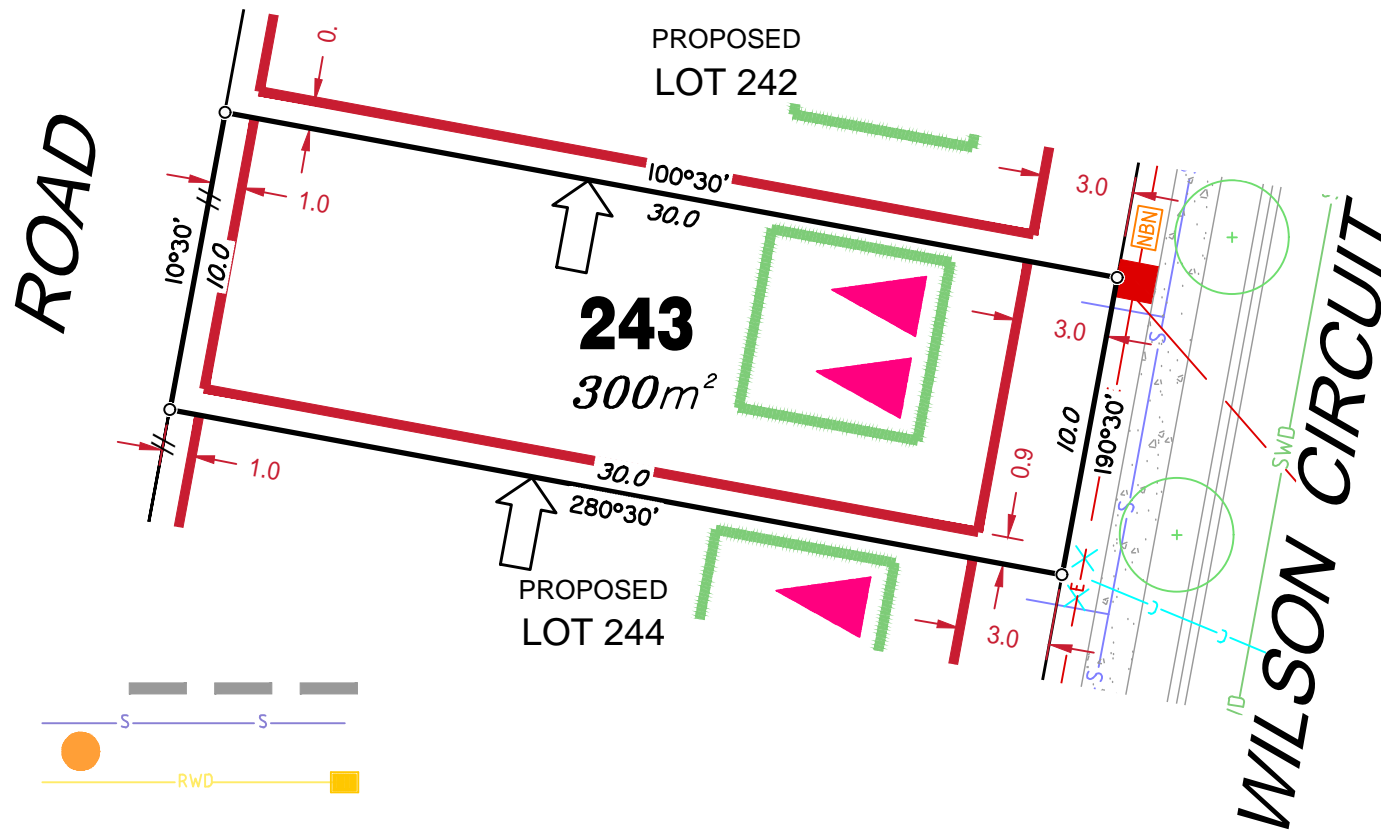
Allotments used as Multiple Residential Allotments in accordance with the approved Plan of Development may have a reduced primary road setback to 3.0metres as noted on the Plan of Development Table.

Compaction of any fill material placed on this site shall be completed to level one inspection and testing services in accordance with AS3798-2007.

Location of sewer, roofwater, stormwater, water reticulation and electricity lines, manholes and pits are those shown on engineering design drawings, supplied by Bradlees Meinhardt, and may differ from the as-constructed location.

Plan of Development information Supplied by RPS Group PLC.

Copyright © Queensland Surveying Pty Ltd a Veris Company  
May 2017.



## LEGEND

Retaining Wall shown as:-

Sewer line

Sewer Manhole

Roofwater Drainage line and  
Catch Pit

Stormwater Drainage Line

Stormwater Manhole

Stormwater Pit

Water Main

Water Conduit

Water Service Point of Entry

Underground Electricity, Street Light,  
Electricity Pillar & NBN

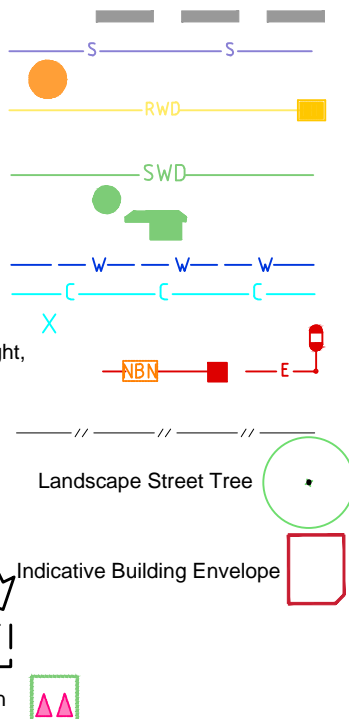
Developer Fencing

Concrete Pathway

Zero Setback Building Line

Proposed Services Easement

Indicative Parking Access Location



## ADDITIONAL NOTES:

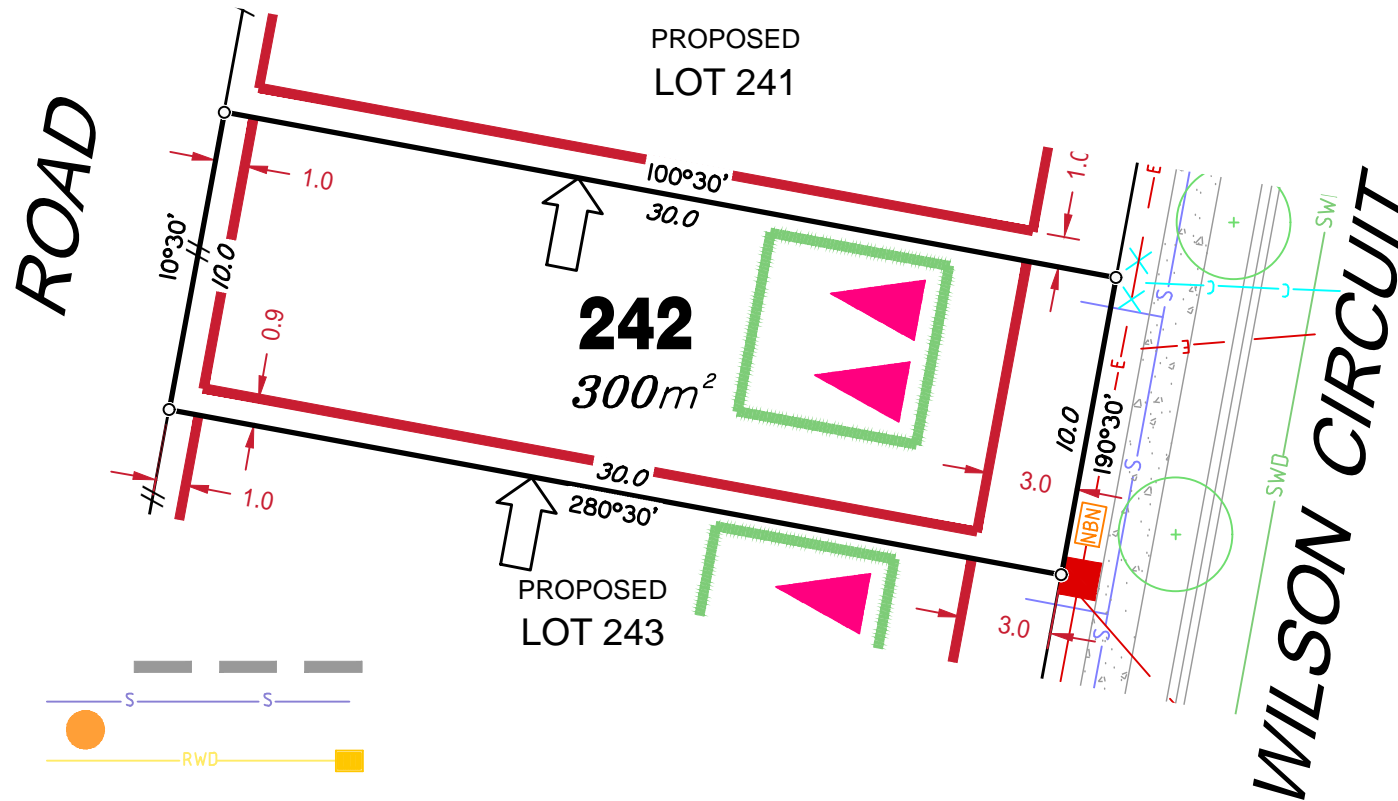
Allotments used as Multiple Residential Allotments in accordance with the approved Plan of Development may have a reduced primary road setback to 3.0metres as noted on the Plan of Development Table.

Compaction of any fill material placed on this site shall be completed to level one inspection and testing services in accordance with AS3798-2007.

Location of sewer, roofwater, stormwater, water reticulation and electricity lines, manholes and pits are those shown on engineering design drawings, supplied by Bradlees Meinhardt, and may differ from the as-constructed location.

Plan of Development information Supplied by RPS Group PLC.

Copyright © Queensland Surveying Pty Ltd a Veris Company  
May 2017.



## LEGEND

Retaining Wall shown as:-

Sewer line

Sewer Manhole

Roofwater Drainage line and  
Catch Pit

Stormwater Drainage Line

Stormwater Manhole

Stormwater Pit

Water Main

Water Conduit

Water Service Point of Entry

Underground Electricity, Street Light,  
Electricity Pillar & NBN

Developer Fencing

Concrete Pathway

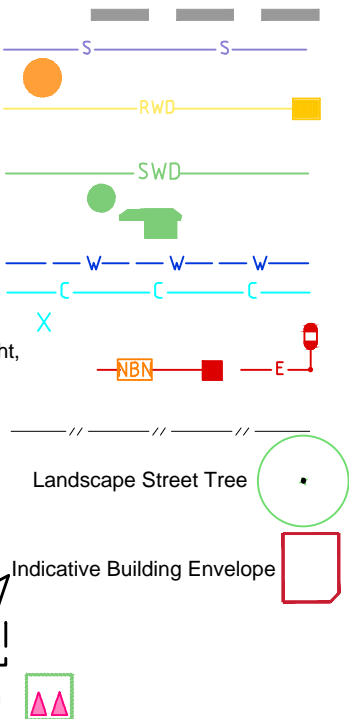
Landscape Street Tree

Zero Setback Building Line

Indicative Building Envelope

Proposed Services Easement

Indicative Parking Access Location



## ADDITIONAL NOTES:

Allotments used as Multiple Residential Allotments in accordance with the approved Plan of Development may have a reduced primary road setback to 3.0metres as noted on the Plan of Development Table.

Compaction of any fill material placed on this site shall be completed to level one inspection and testing services in accordance with AS3798-2007.

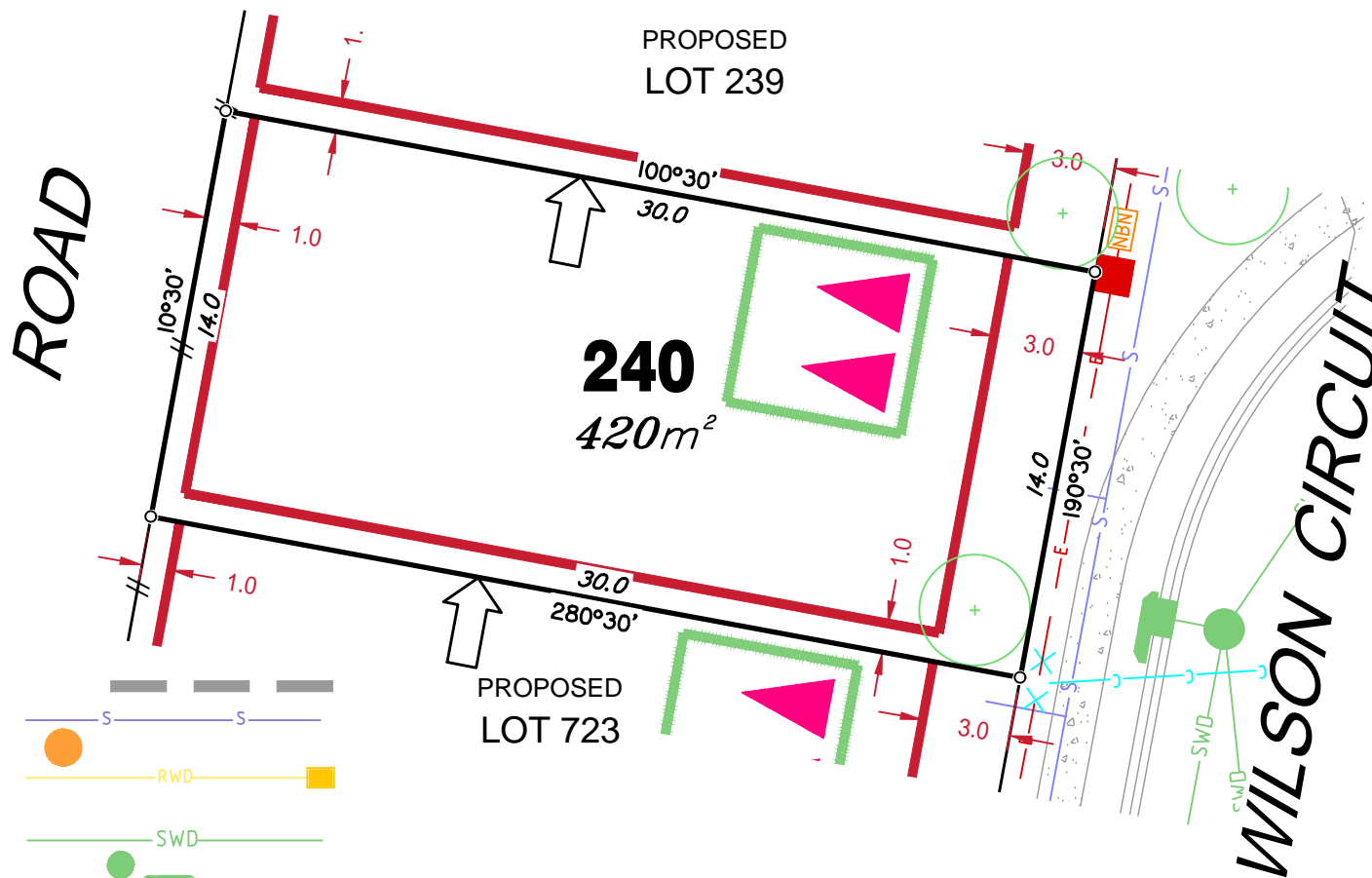
Location of sewer, roofwater, stormwater, water reticulation and electricity lines, manholes and pits are those shown on engineering design drawings, supplied by Bradlees Meinhardt, and may differ from the as-constructed location.

Plan of Development information Supplied by RPS Group PLC.

Copyright © Queensland Surveying Pty Ltd a Veris Company  
May 2017.







## LEGEND

Retaining Wall shown as:-

Sewer line

Sewer Manhole

Roofwater Drainage line and  
Catch Pit

Stormwater Drainage Line

Stormwater Manhole

Stormwater Pit

Water Main

Water Conduit

Water Service Point of Entry

Underground Electricity, Street Light,  
Electricity Pillar & NBN

Developer Fencing

Concrete Pathway

Landscape Street Tree

Zero Setback Building Line

Indicative Building Envelope

Proposed Services Easement

Indicative Parking Access Location



## ADDITIONAL NOTES:

Allotments used as Multiple Residential Allotments in accordance with the approved Plan of Development may have a reduced primary road setback to 3.0metres as noted on the Plan of Development Table.

Compaction of any fill material placed on this site shall be completed to level one inspection and testing services in accordance with AS3798-2007.

Location of sewer, roofwater, stormwater, water reticulation and electricity lines, manholes and pits are those shown on engineering design drawings, supplied by Bradlees Meinhardt, and may differ from the as-constructed location.

Plan of Development information Supplied by RPS Group PLC.

Copyright © Queensland Surveying Pty Ltd a Veris Company  
May 2017.

ROAD

PROPOSED  
LOT 238

**239**  
375m<sup>2</sup>

PROPOSED  
LOT 240

WILSON CIRCUIT

## LEGEND

Retaining Wall shown as:-

Sewer line

Sewer Manhole

Roofwater Drainage line and  
Catch Pit

Stormwater Drainage Line

Stormwater Manhole

Stormwater Pit

Water Main

Water Conduit

Water Service Point of Entry

Underground Electricity, Street Light,  
Electricity Pillar & NBN

Developer Fencing

Concrete Pathway

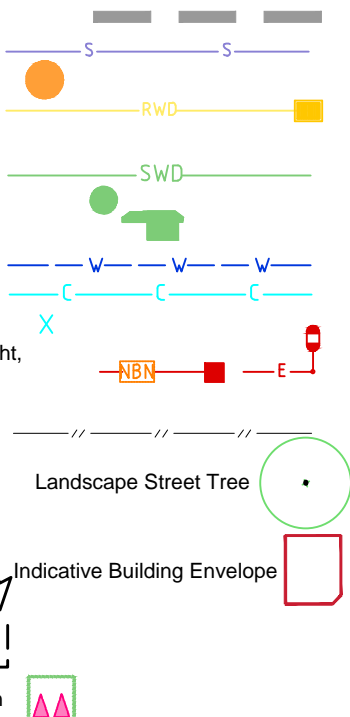
Landscape Street Tree

Zero Setback Building Line

Indicative Building Envelope

Proposed Services Easement

Indicative Parking Access Location



## ADDITIONAL NOTES:

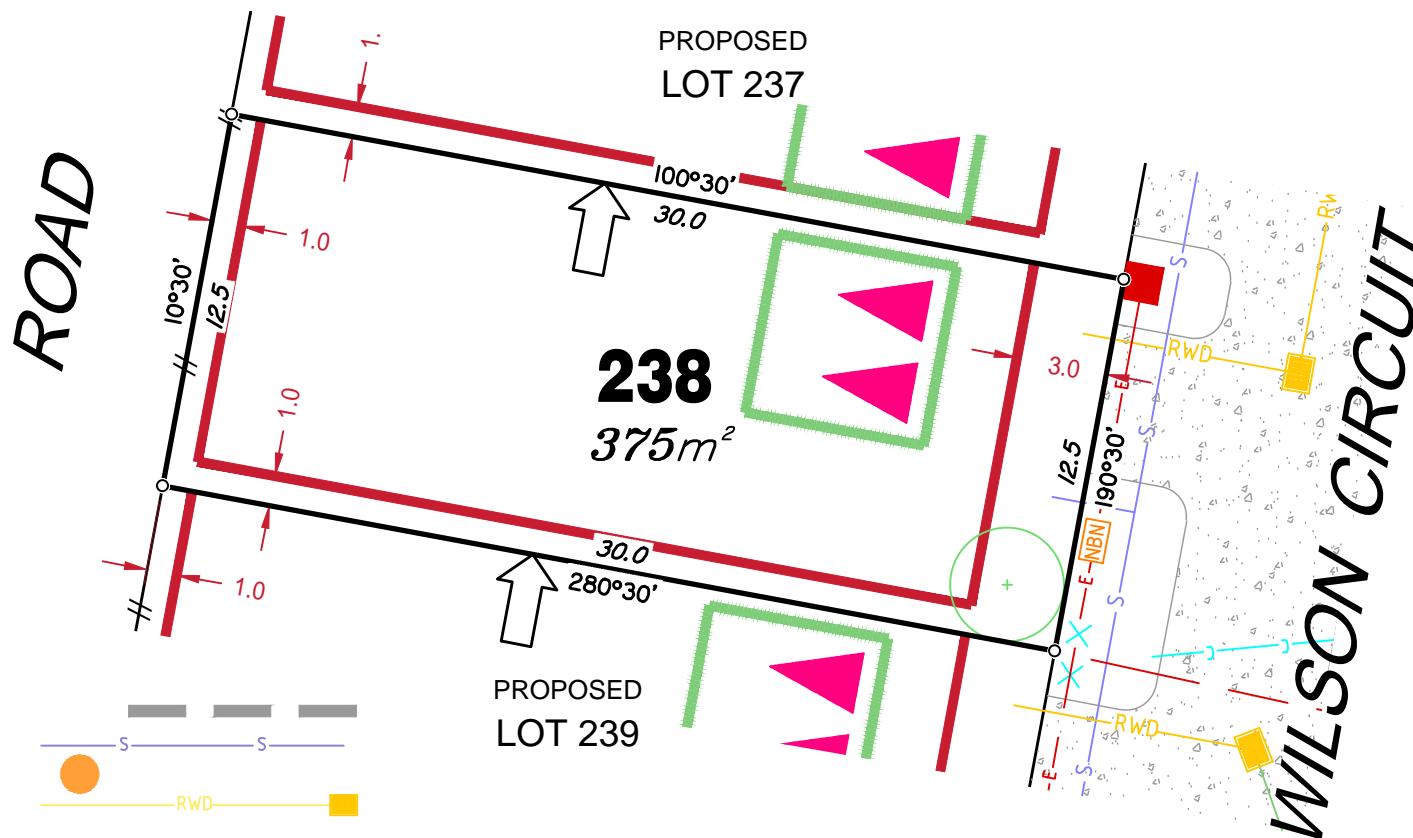
Allotments used as Multiple Residential Allotments in accordance with the approved Plan of Development may have a reduced primary road setback to 3.0metres as noted on the Plan of Development Table.

Compaction of any fill material placed on this site shall be completed to level one inspection and testing services in accordance with AS3798-2007.

Location of sewer, roofwater, stormwater, water reticulation and electricity lines, manholes and pits are those shown on engineering design drawings, supplied by Bradlees Meinhardt, and may differ from the as-constructed location.

Plan of Development information Supplied by RPS Group PLC.

Copyright © Queensland Surveying Pty Ltd a Veris Company  
May 2017.



## LEGEND

Retaining Wall shown as:-

Sewer line

Sewer Manhole

Roofwater Drainage line and  
Catch Pit

Stormwater Drainage Line

Stormwater Manhole

Stormwater Pit

Water Main

Water Conduit

Water Service Point of Entry

Underground Electricity, Street Light,  
Electricity Pillar & NBN

Developer Fencing

Concrete Pathway

Landscape Street Tree

Zero Setback Building Line

Indicative Building Envelope

Proposed Services Easement

Indicative Parking Access Location

## ADDITIONAL NOTES:

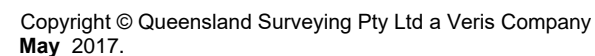
Allotments used as Multiple Residential Allotments in accordance with the approved Plan of Development may have a reduced primary road setback to 3.0metres as noted on the Plan of Development Table.

Compaction of any fill material placed on this site shall be completed to level one inspection and testing services in accordance with AS3798-2007.

Location of sewer, roofwater, stormwater, water reticulation and electricity lines, manholes and pits are those shown on engineering design drawings, supplied by Bradlees Meinhardt, and may differ from the as-constructed location.

Plan of Development information Supplied by RPS Group PLC.

Copyright © Queensland Surveying Pty Ltd a Veris Company  
May 2017.





## LEGEND

Retaining Wall shown as:-

Sewer line

Sewer Manhole

Roofwater Drainage line and  
Catch Pit

Stormwater Drainage Line

Stormwater Manhole

Stormwater Pit

Water Main

Water Conduit

Water Service Point of Entry

Underground Electricity, Street Light,  
Electricity Pillar & NBN

Developer Fencing

Concrete Pathway



Landscape Street Tree



Zero Setback Building Line



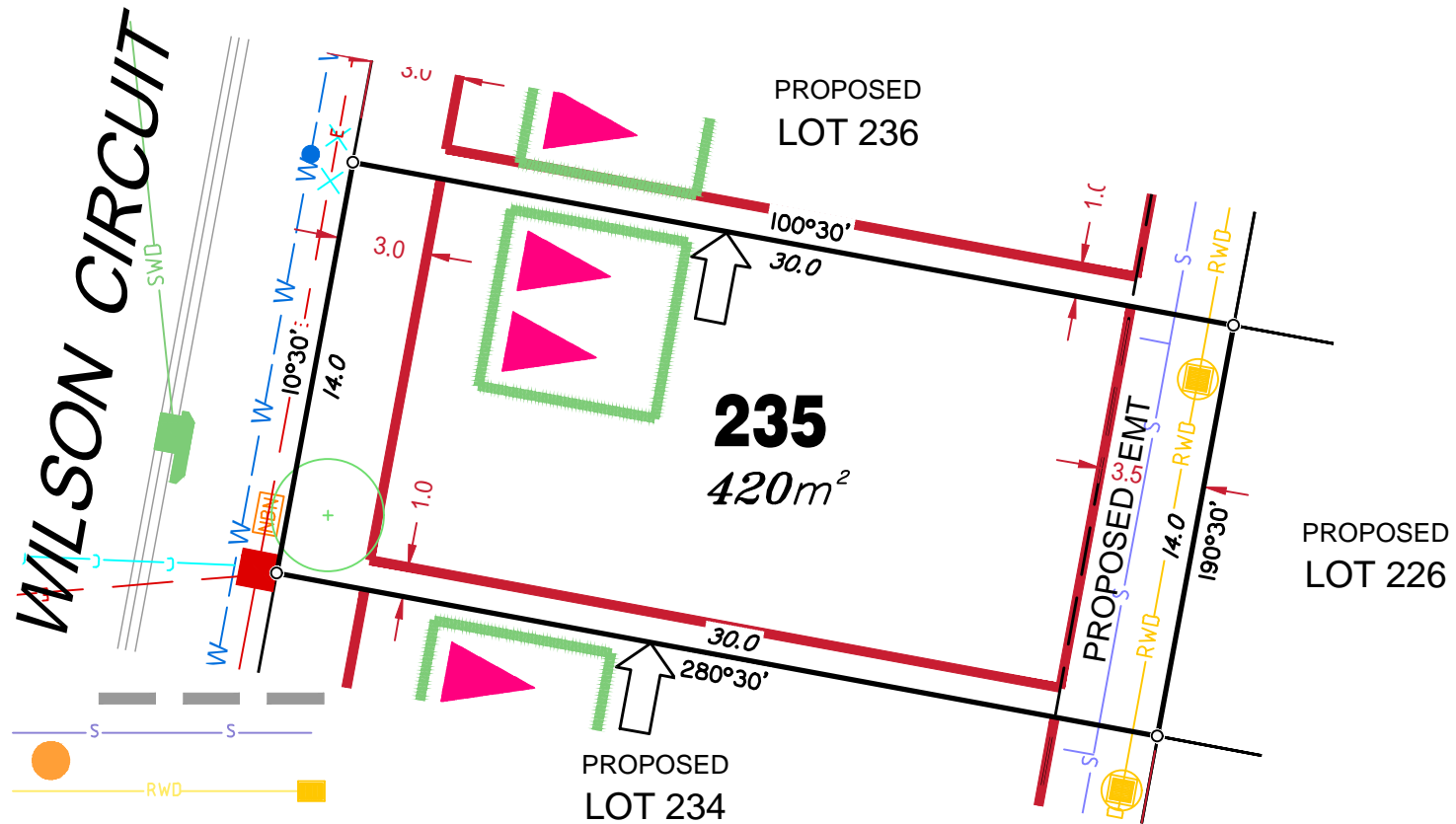
Indicative Building Envelope



Proposed Services Easement



Indicative Parking Access Location



## ADDITIONAL NOTES:

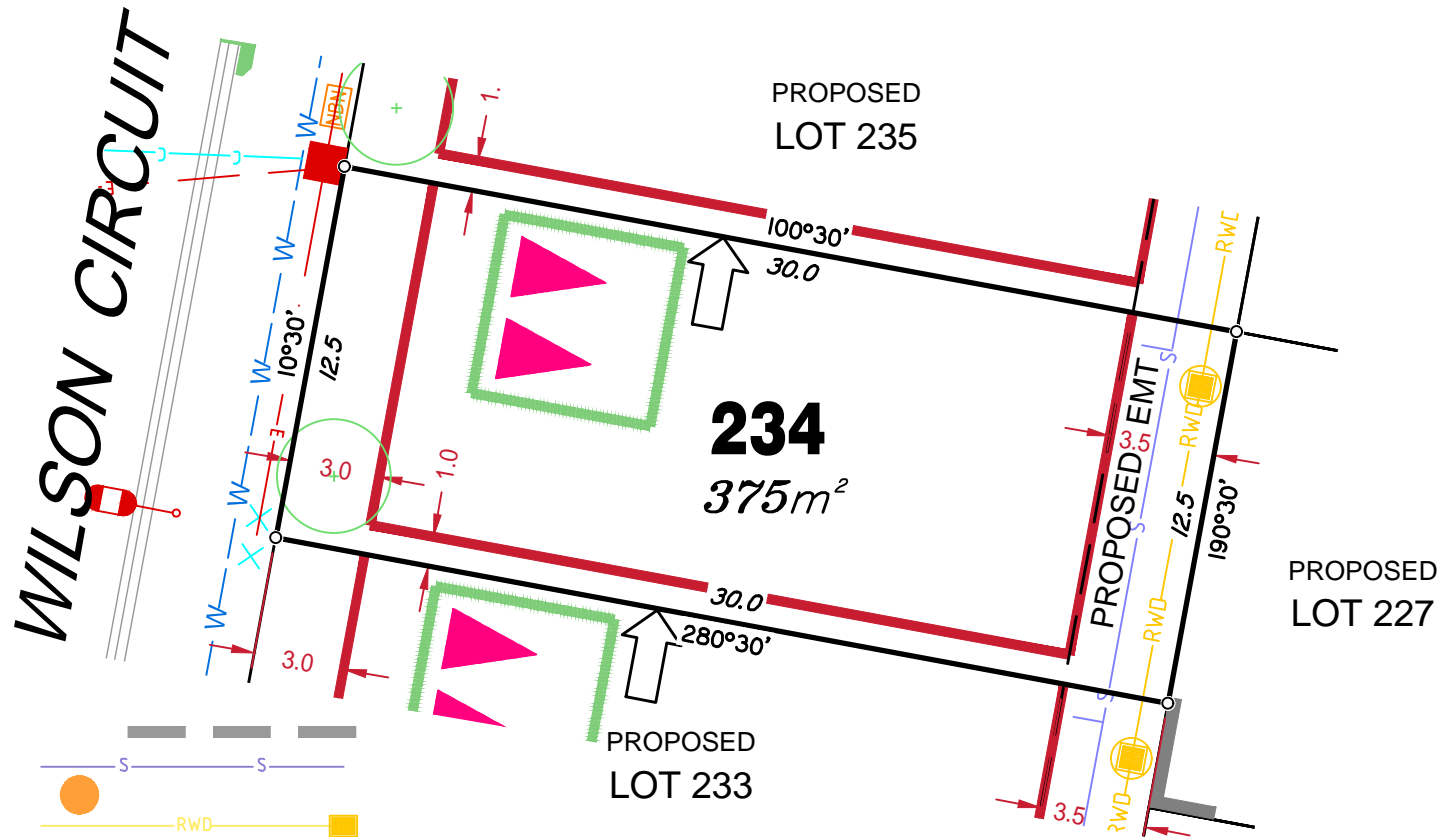
Allotments used as Multiple Residential Allotments in accordance with the approved Plan of Development may have a reduced primary road setback to 3.0metres as noted on the Plan of Development Table.

Compaction of any fill material placed on this site shall be completed to level one inspection and testing services in accordance with AS3798-2007.

Location of sewer, roofwater, stormwater, water reticulation and electricity lines, manholes and pits are those shown on engineering design drawings, supplied by Bradlees Meinhardt, and may differ from the as-constructed location.

Plan of Development information Supplied by RPS Group PLC.

Copyright © Queensland Surveying Pty Ltd a Veris Company  
April 2017.



## LEGEND

Retaining Wall shown as:-

Sewer line

Sewer Manhole

Roofwater Drainage line and  
Catch Pit

Stormwater Drainage Line

Stormwater Manhole

Stormwater Pit

Water Main

Water Conduit

Water Service Point of Entry

Underground Electricity, Street Light,  
Electricity Pillar & NBN

Developer Fencing

Concrete Pathway

Landscape Street Tree

Zero Setback Building Line

Indicative Building Envelope

Proposed Services Easement

Indicative Parking Access Location

## ADDITIONAL NOTES:

Allotments used as Multiple Residential Allotments in accordance with the approved Plan of Development may have a reduced primary road setback to 3.0metres as noted on the Plan of Development Table.

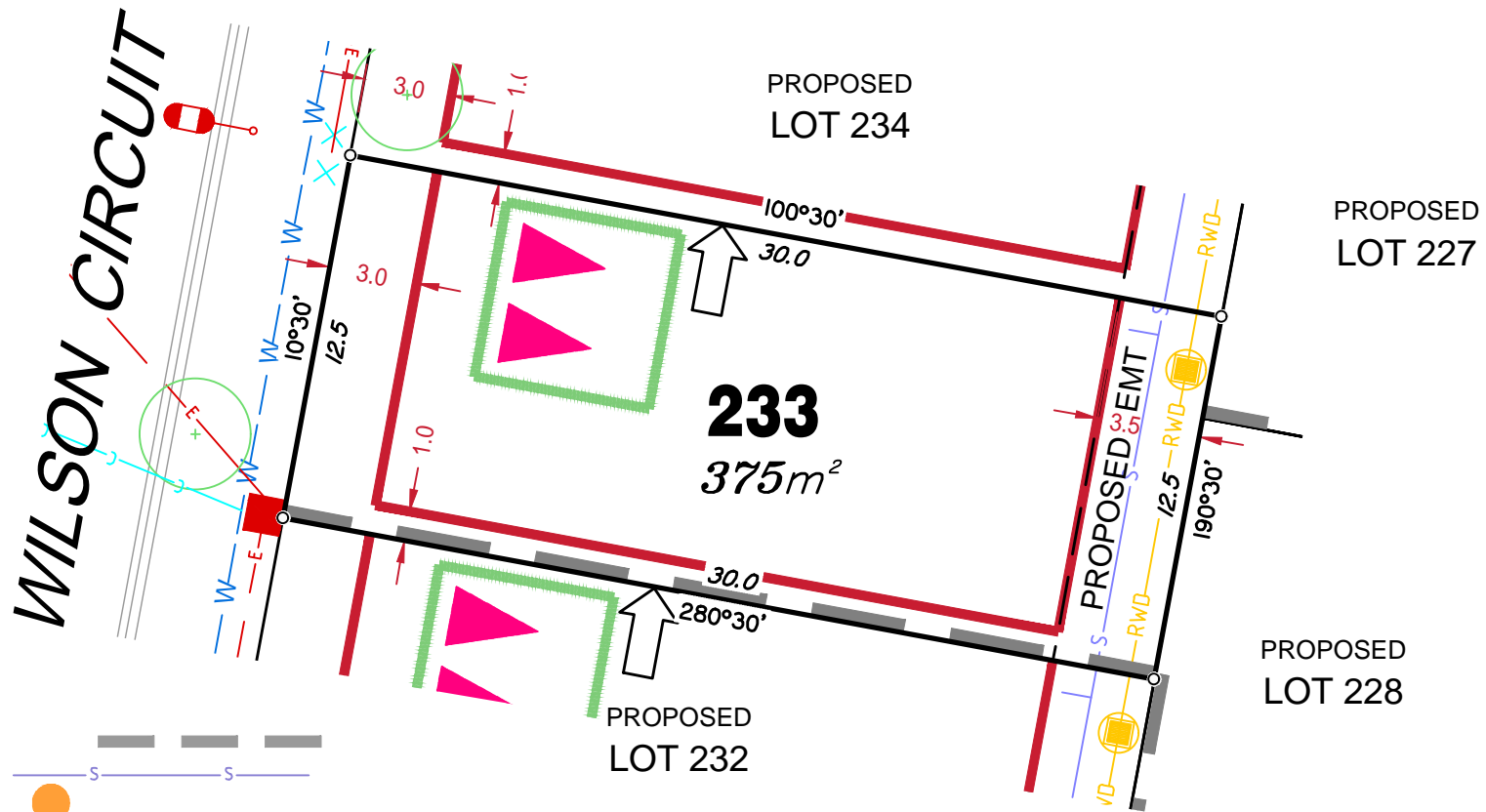
Compaction of any fill material placed on this site shall be completed to level one inspection and testing services in accordance with AS3798-2007.

Location of sewer, roofwater, stormwater, water reticulation and electricity lines, manholes and pits are those shown on engineering design drawings, supplied by Bradlees Meinhardt, and may differ from the as-constructed location.

Plan of Development information Supplied by RPS Group PLC.

Copyright © Queensland Surveying Pty Ltd a Veris Company  
April 2017.





## LEGEND

Retaining Wall shown as:-

Sewer line

Sewer Manhole

Roofwater Drainage line and  
Catch Pit

Stormwater Drainage Line

Stormwater Manhole

Stormwater Pit

Water Main

Water Conduit

Water Service Point of Entry

Underground Electricity, Street Light,  
Electricity Pillar & NBN

Developer Fencing

Concrete Pathway

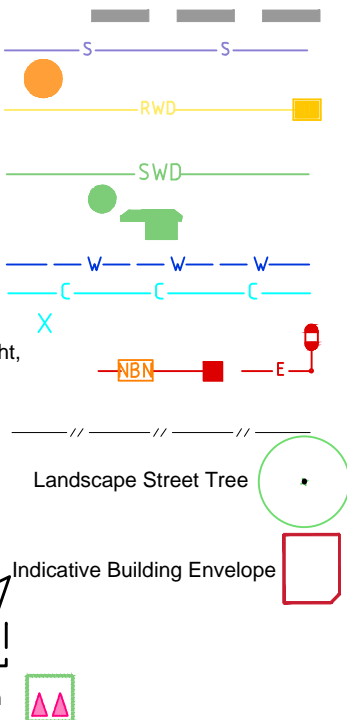
Landscape Street Tree

Zero Setback Building Line

Indicative Building Envelope

Proposed Services Easement

Indicative Parking Access Location



## ADDITIONAL NOTES:

Allotments used as Multiple Residential Allotments in accordance with the approved Plan of Development may have a reduced primary road setback to 3.0metres as noted on the Plan of Development Table.

Compaction of any fill material placed on this site shall be completed to level one inspection and testing services in accordance with AS3798-2007.

Location of sewer, roofwater, stormwater, water reticulation and electricity lines, manholes and pits are those shown on engineering design drawings, supplied by Bradlees Meinhardt, and may differ from the as-constructed location.

Plan of Development information Supplied by RPS Group PLC.

Copyright © Queensland Surveying Pty Ltd a Veris Company  
May 2017.

## LEGEND

Retaining Wall shown as:-

Sewer line

Sewer Manhole

Roofwater Drainage line and  
Catch Pit

Stormwater Drainage Line

Stormwater Manhole

Stormwater Pit

Water Main

Water Conduit

Water Service Point of Entry

Underground Electricity, Street Light,  
Electricity Pillar & NBN

Developer Fencing

Concrete Pathway

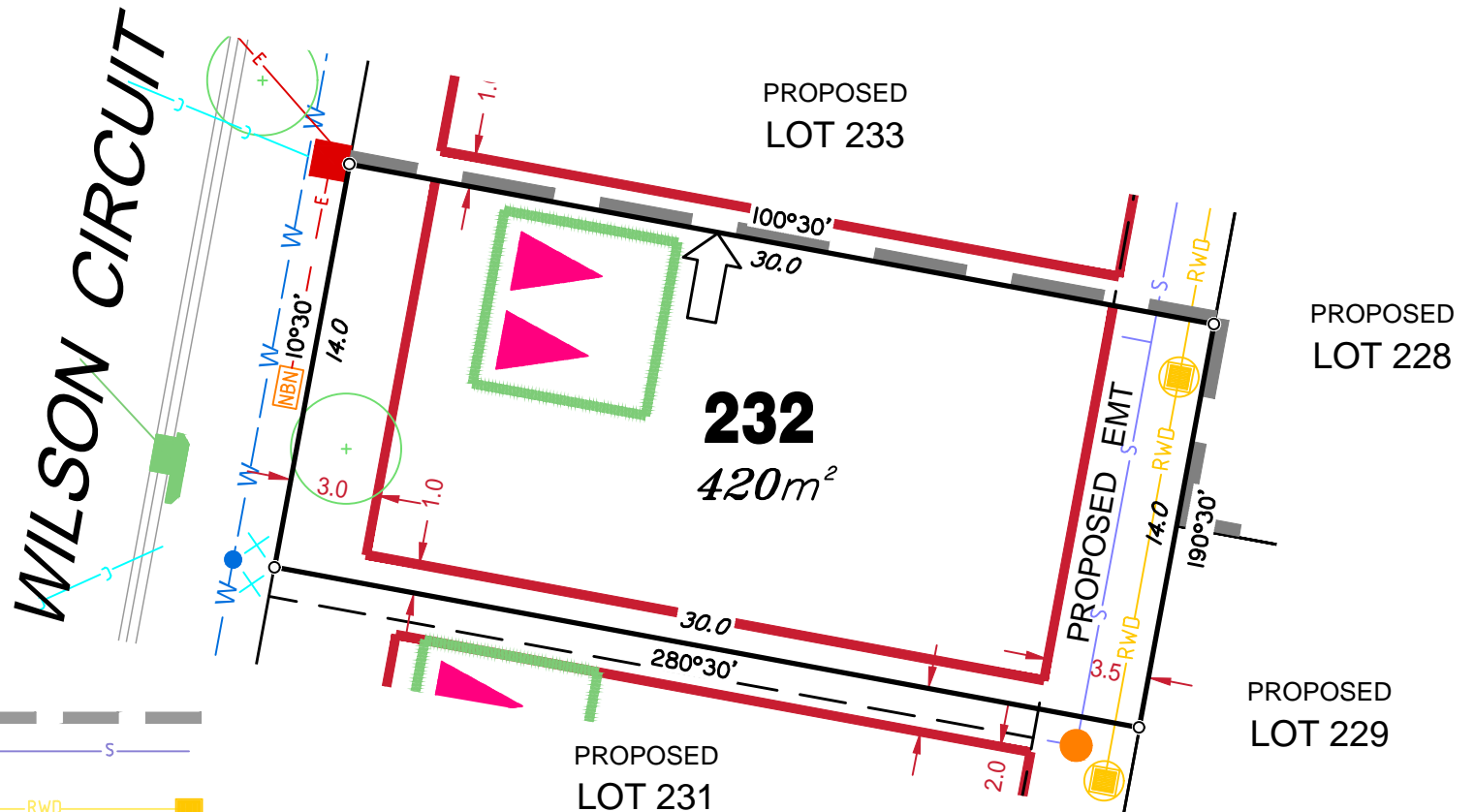
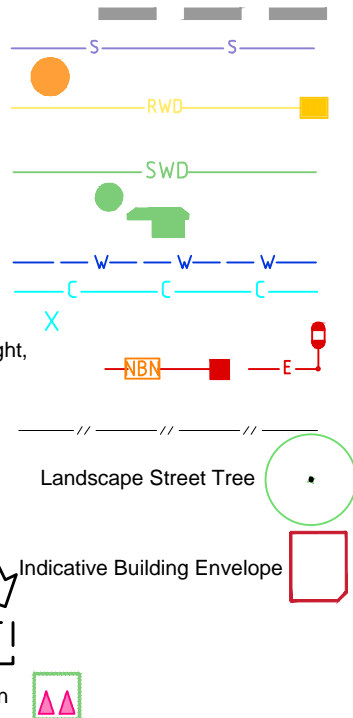
Landscape Street Tree

Zero Setback Building Line

Indicative Building Envelope

Proposed Services Easement

Indicative Parking Access Location



## ADDITIONAL NOTES:

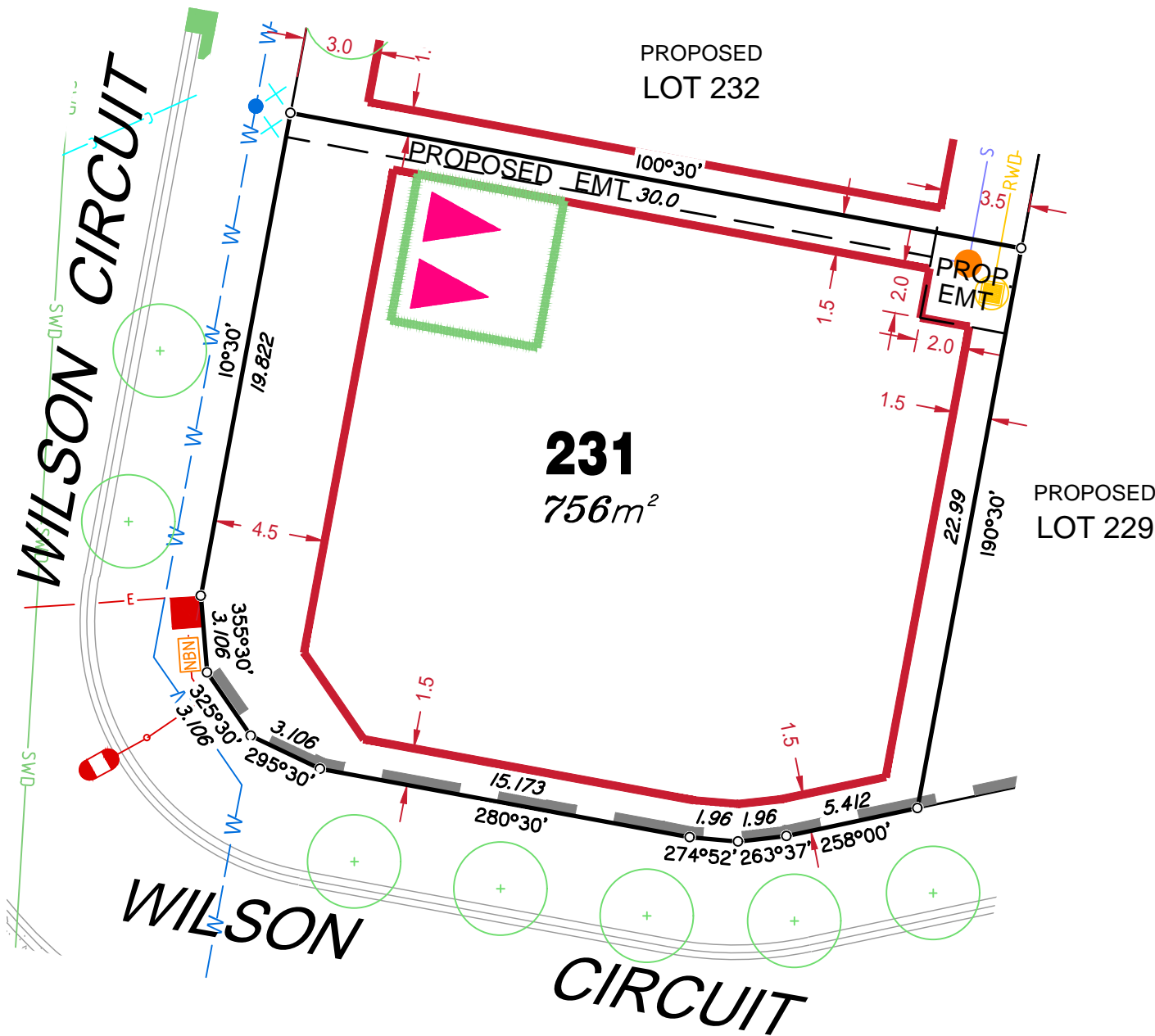
Allotments used as Multiple Residential Allotments in accordance with the approved Plan of Development may have a reduced primary road setback to 3.0metres as noted on the Plan of Development Table.

Compaction of any fill material placed on this site shall be completed to level one inspection and testing services in accordance with AS3798-2007.

Location of sewer, roofwater, stormwater, water reticulation and electricity lines, manholes and pits are those shown on engineering design drawings, supplied by Bradlees Meinhardt, and may differ from the as-constructed location.

Plan of Development information Supplied by RPS Group PLC.

Copyright © Queensland Surveying Pty Ltd a Veris Company  
May 2017.



## LEGEND

Retaining Wall shown as:-

Sewer line

Sewer Manhole

Roofwater Drainage line and  
Catch Pit

Stormwater Drainage Line

Stormwater Manhole

Stormwater Pit

Water Main

Water Conduit

Water Service Point of Entry

Underground Electricity, Street Light,  
Electricity Pillar & NBN

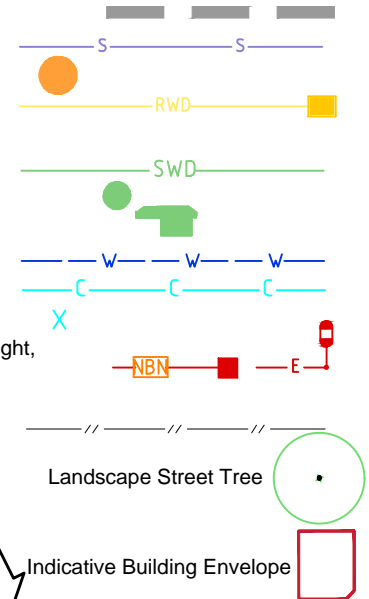
Developer Fencing

Concrete Pathway

Zero Setback Building Line

Proposed Services Easement

Indicative Parking Access Location



## ADDITIONAL NOTES:

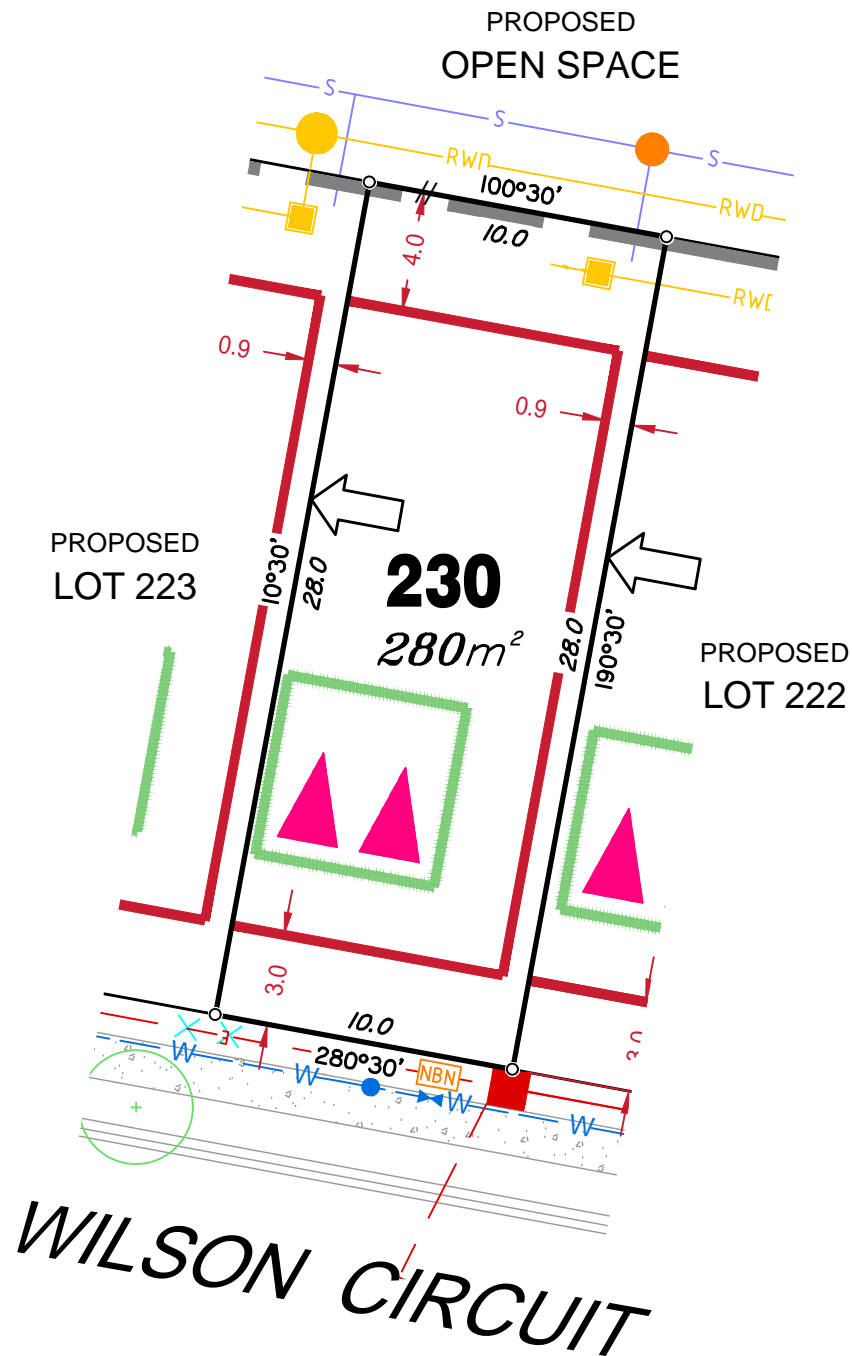
Allotments used as Multiple Residential Allotments in accordance with the approved Plan of Development may have a reduced primary road setback to 3.0metres as noted on the Plan of Development Table.

Compaction of any fill material placed on this site shall be completed to level one inspection and testing services in accordance with AS3798-2007.

Location of sewer, roofwater, stormwater, water reticulation and electricity lines, manholes and pits are those shown on engineering design drawings, supplied by Bradlees Meinhardt, and may differ from the as-constructed location.

Plan of Development information Supplied by RPS Group PLC.

Copyright © Queensland Surveying Pty Ltd a Veris Company  
April 2017.



## LEGEND

Retaining Wall shown as:-

Sewer line

Sewer Manhole

Roofwater Drainage line and

Catch Pit

Stormwater Drainage Line

Stormwater Manhole

Stormwater Pit

Water Main

Water Conduit

Water Service Point of Entry

Underground Electricity, Street Light,

Electricity Pillar & NBN

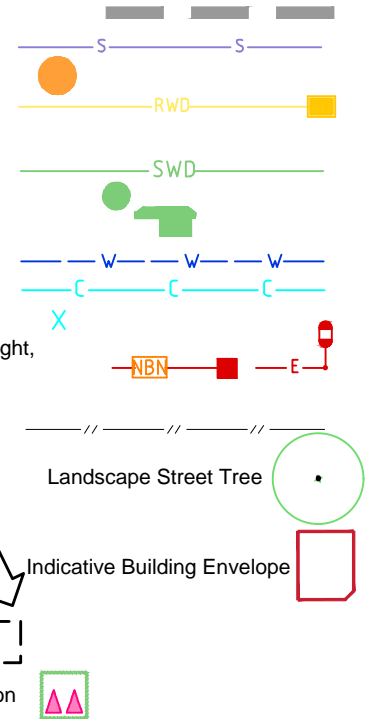
Developer Fencing

Concrete Pathway

Zero Setback Building Line

Proposed Services Easement

Indicative Parking Access Location



## ADDITIONAL NOTES:

Allotments used as Multiple Residential Allotments in accordance with the approved Plan of Development may have a reduced primary road setback to 3.0metres as noted on the Plan of Development Table.

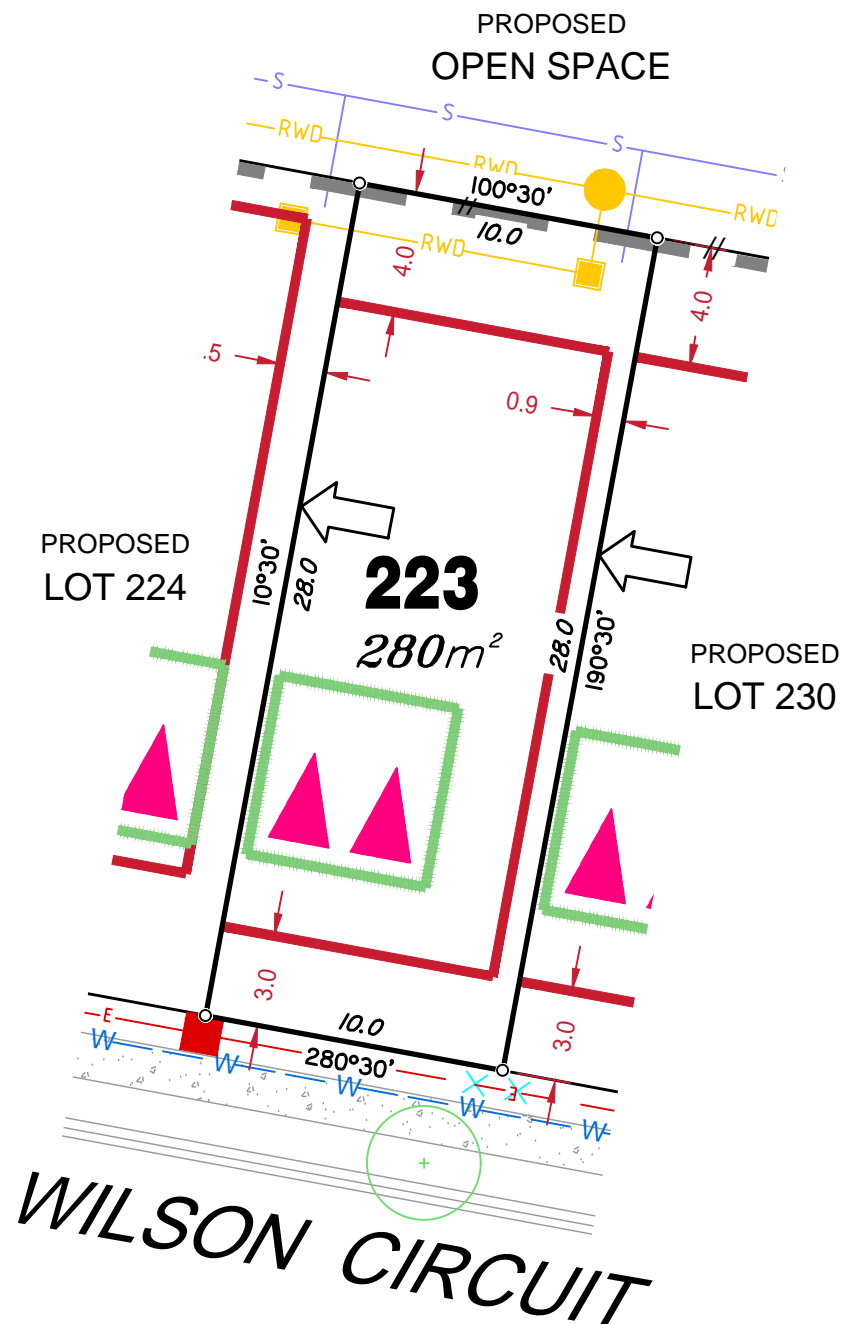
Compaction of any fill material placed on this site shall be completed to level one inspection and testing services in accordance with AS3798-2007.

Location of sewer, roofwater, stormwater, water reticulation and electricity lines, manholes and pits are those shown on engineering design drawings, supplied by Bradlees Meinhardt, and may differ from the as-constructed location.

Plan of Development information Supplied by RPS Group PLC.

Copyright © Queensland Surveying Pty Ltd a Veris Company  
April 2017.





## LEGEND

Retaining Wall shown as:-

Sewer line

Sewer Manhole

Roofwater Drainage line and

Catch Pit

Stormwater Drainage Line

Stormwater Manhole

Stormwater Pit

Water Main

Water Conduit

Water Service Point of Entry

Underground Electricity, Street Light,  
Electricity Pillar & NBN

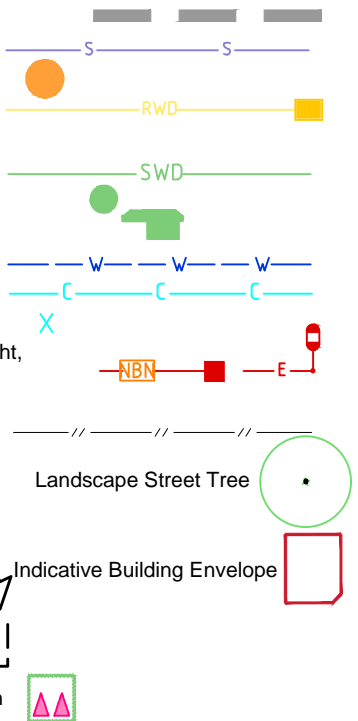
Developer Fencing

Concrete Pathway

Zero Setback Building Line

Proposed Services Easement

Indicative Parking Access Location



## ADDITIONAL NOTES:

Allotments used as Multiple Residential Allotments in accordance with the approved Plan of Development may have a reduced primary road setback to 3.0metres as noted on the Plan of Development Table.

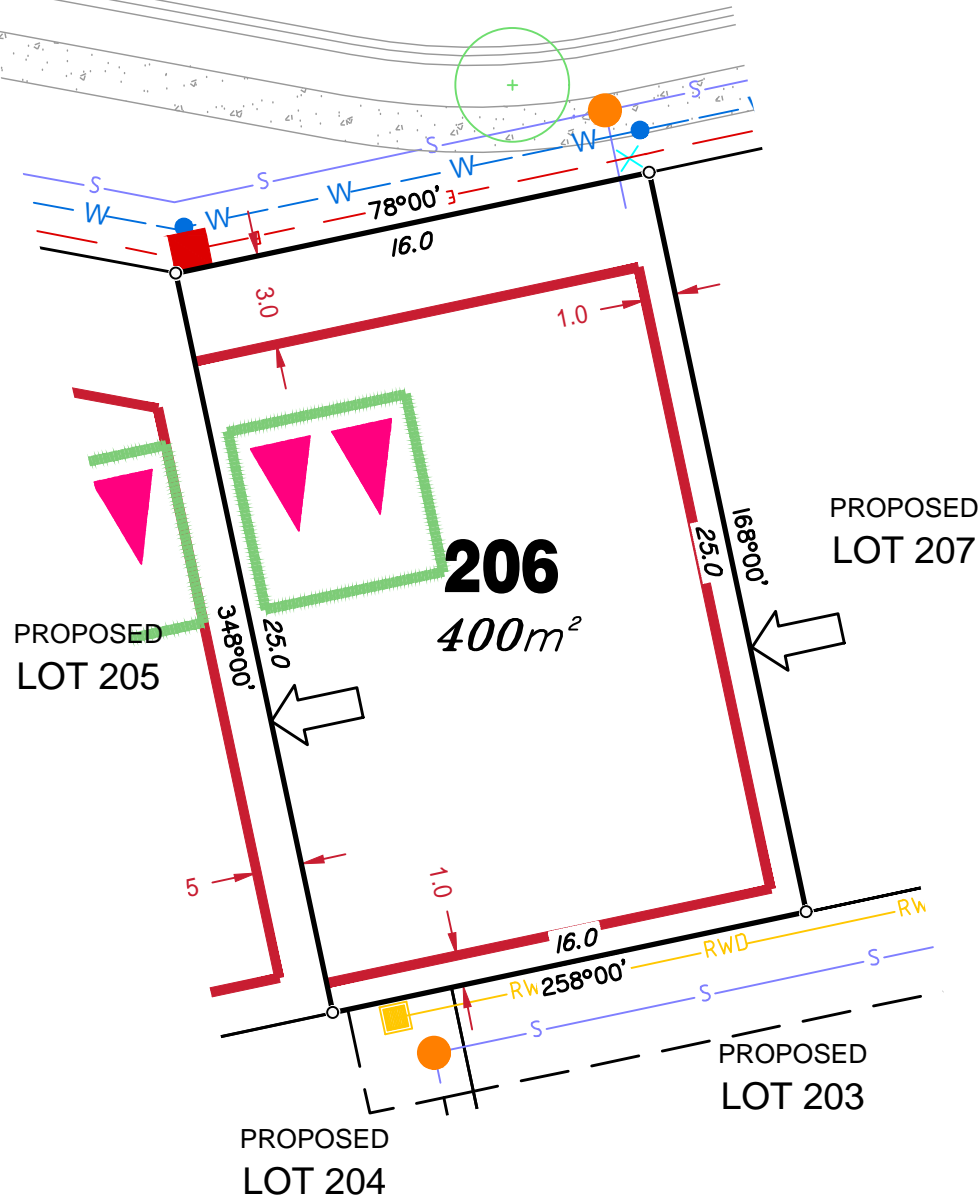
Compaction of any fill material placed on this site shall be completed to level one inspection and testing services in accordance with AS3798-2007.

Location of sewer, roofwater, stormwater, water reticulation and electricity lines, manholes and pits are those shown on engineering design drawings, supplied by Bradlees Meinhardt, and may differ from the as-constructed location.

Plan of Development information Supplied by RPS Group PLC.

Copyright © Queensland Surveying Pty Ltd a Veris Company  
April 2017.

# WILSON CIRCUIT



## LEGEND

Retaining Wall shown as:-

Sewer line

Sewer Manhole

Roofwater Drainage line and  
Catch Pit

Stormwater Drainage Line

Stormwater Manhole

Stormwater Pit

Water Main

Water Conduit

Water Service Point of Entry

Underground Electricity, Street Light,  
Electricity Pillar & NBN

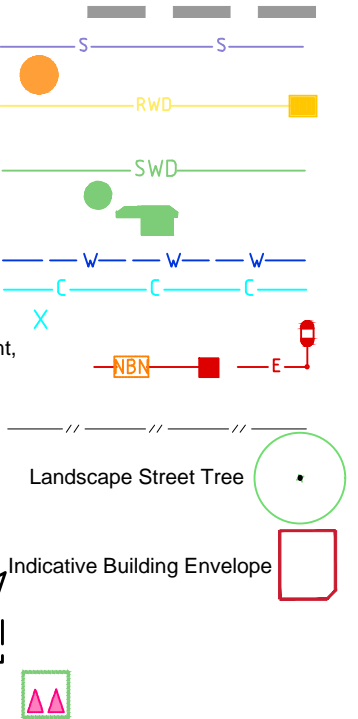
Developer Fencing

Concrete Pathway

Zero Setback Building Line

Proposed Services Easement

Indicative Parking Access Location



## ADDITIONAL NOTES:

Allotments used as Multiple Residential Allotments in accordance with the approved Plan of Development may have a reduced primary road setback to 3.0metres as noted on the Plan of Development Table.

Compaction of any fill material placed on this site shall be completed to level one inspection and testing services in accordance with AS3798-2007.

Location of sewer, roofwater, stormwater, water reticulation and electricity lines, manholes and pits are those shown on engineering design drawings, supplied by Bradlees Meinhardt, and may differ from the as-constructed location.

Plan of Development information Supplied by RPS Group PLC.

Copyright © Queensland Surveying Pty Ltd a Veris Company  
April 2017.