

## LEGEND

Retaining Wall shown as:-

- Diagram illustrating the layout of a street with various utilities and features:
- Utilities (from top to bottom):**
    - Sewer line
    - Sewer Manhole
    - Roofwater Drainage line and Catch Pit
    - Stormwater Drainage Line
    - Stormwater Manhole
    - Stormwater Pit
    - Water Main
    - Water Conduit
    - Water Service Point of Entry
    - Underground Electricity, Street Light, Electricity Pillar & NBN
  - Other Features:**
    - Developer Fencing
    - Concrete Pathway
    - Zero Setback Building Line
    - Proposed Services Easement
    - Indicative Building Envelope
    - Indicative Parking Access Location
    - Landscape Street Tree
- The diagram shows a cross-section of a street with various utilities and features. The utilities are represented by colored lines and symbols: a blue line for the sewer line, a blue circle for the sewer manhole, a yellow line for the roofwater drainage line, a green line for the stormwater drainage line, a green circle for the stormwater manhole, a green line for the stormwater pit, a blue line for the water main, a blue line for the water conduit, a blue line for the water service point of entry, a red line for the underground electricity, a red circle for the street light, a red line for the electricity pillar, and a red line for the NBN. Other features include a grey area for developer fencing, a grey area for the concrete pathway, a green line for the zero setback building line, a green rectangle for the proposed services easement, a green rectangle for the indicative building envelope, a green rectangle for the indicative parking access location, and a green circle for the landscape street tree.

**ADDITIONAL NOTES:**

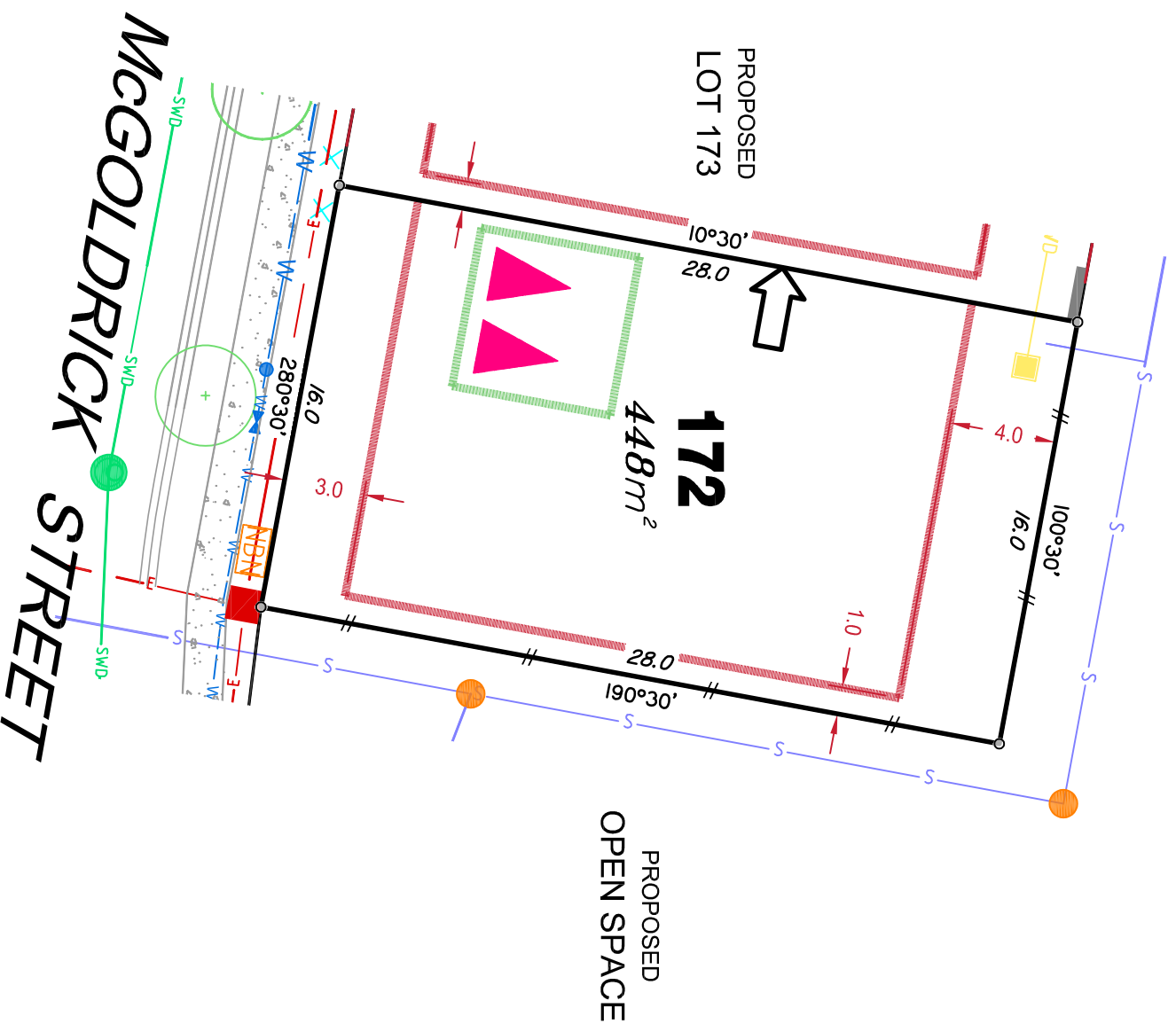
Allotments used as Multiple Residential Allotments in accordance with the approved Plan of Development may have a reduced primary road setback to 3.0metres as noted on the Plan of Development Table.

Compaction of any fill material placed on this site shall be completed to level one inspection and testing services in accordance with AS3798-2007.

Location of sewer, roofwater, stormwater, water reticulation and electricity lines, manholes and pits are those shown on engineering design drawings, supplied by Bradlees Meinhardt, and may differ from the as-constructed location.

Plan of Development information Supplied by RPS Group PLC.

Copyright © Queensland Surveying Pty Ltd a Veris Company  
February 2017.





# LEGEND

Retaining Wall shown as:-

Sewer line

Sewer Manhole

Roofwater Drainage line and Catch Pit

Stormwater Drainage Line

Stormwater Manhole

Stormwater Pit

Water Main

Water Conduit

Water Service Point of Entry

Underground Electricity, Street Light,

Electricity Pillar & NBN

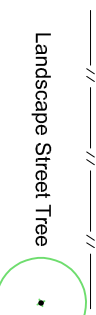
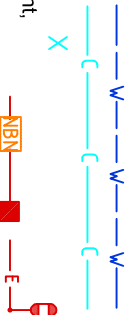
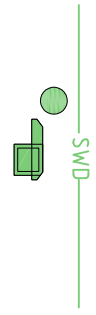
Developer Fencing

Concrete Pathway

Zero Setback Building Line

Proposed Services Easement

Indicative Parking Access Location



## ADDITIONAL NOTES:

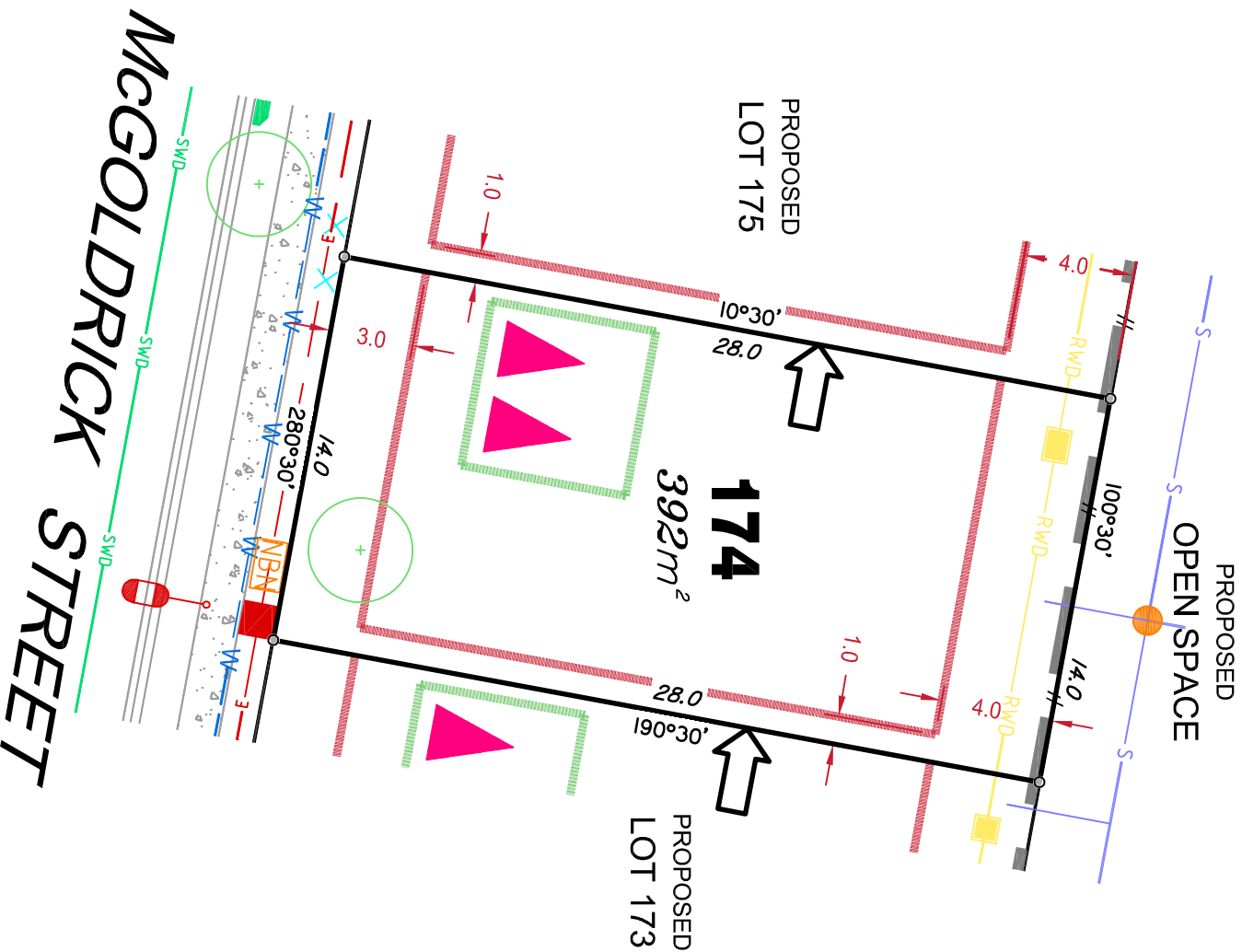
Allotments used as Multiple Residential Allotments in accordance with the approved Plan of Development may have a reduced primary road setback to 3.0metres as noted on the Plan of Development Table.

Compaction of any fill material placed on this site shall be completed to level one inspection and testing services in accordance with AS3798-2007.

Location of sewer, roofwater, stormwater, water reticulation and electricity lines, manholes and pits are those shown on engineering design drawings, supplied by Bradlees Weinhardt, and may differ from the as-constructed location.

Plan of Development information Supplied by RPS Group PLC.

Copyright © Queensland Surveying Pty Ltd a Veris Company  
February 2017.



## LEGEND

Retaining Wall shown as:-

- 
- The diagram illustrates a street layout with various infrastructure elements and their corresponding symbols. The elements are listed on the left, and their symbols are shown on the right, connected by lines. The symbols are as follows:
- Sewer line**: A blue line with a small blue circle.
  - Sewer Manhole**: A blue circle.
  - Roofwater Drainage line and Catch Pit**: A blue line with a small blue circle.
  - Stormwater Drainage Line**: A green line with a small green circle.
  - Stormwater Manhole**: A green circle.
  - Stormwater Pit**: A green circle with a small green square inside.
  - Water Main**: A blue line with a small blue circle.
  - Water Conduit**: A blue line with a small blue circle.
  - Water Service Point of Entry**: A blue line with a small blue circle.
  - Underground Electricity, Street Light, Electricity Pillar & NBN**: A red line with a small red circle, a red square, and a red circle with a cross inside.
  - Developer Fencing**: A red line with a small red circle.
  - Concrete Pathway**: A red line with a small red circle.
  - Zero Setback Building Line**: A red line with a small red circle.
  - Proposed Services Easement**: A red line with a small red circle.
  - Indicative Building Envelope**: A red rectangle.
  - Indicative Parking Access Location**: A red rectangle.
  - Landscape Street Tree**: A green circle with a small green square inside.

**ADDITIONAL NOTES:**

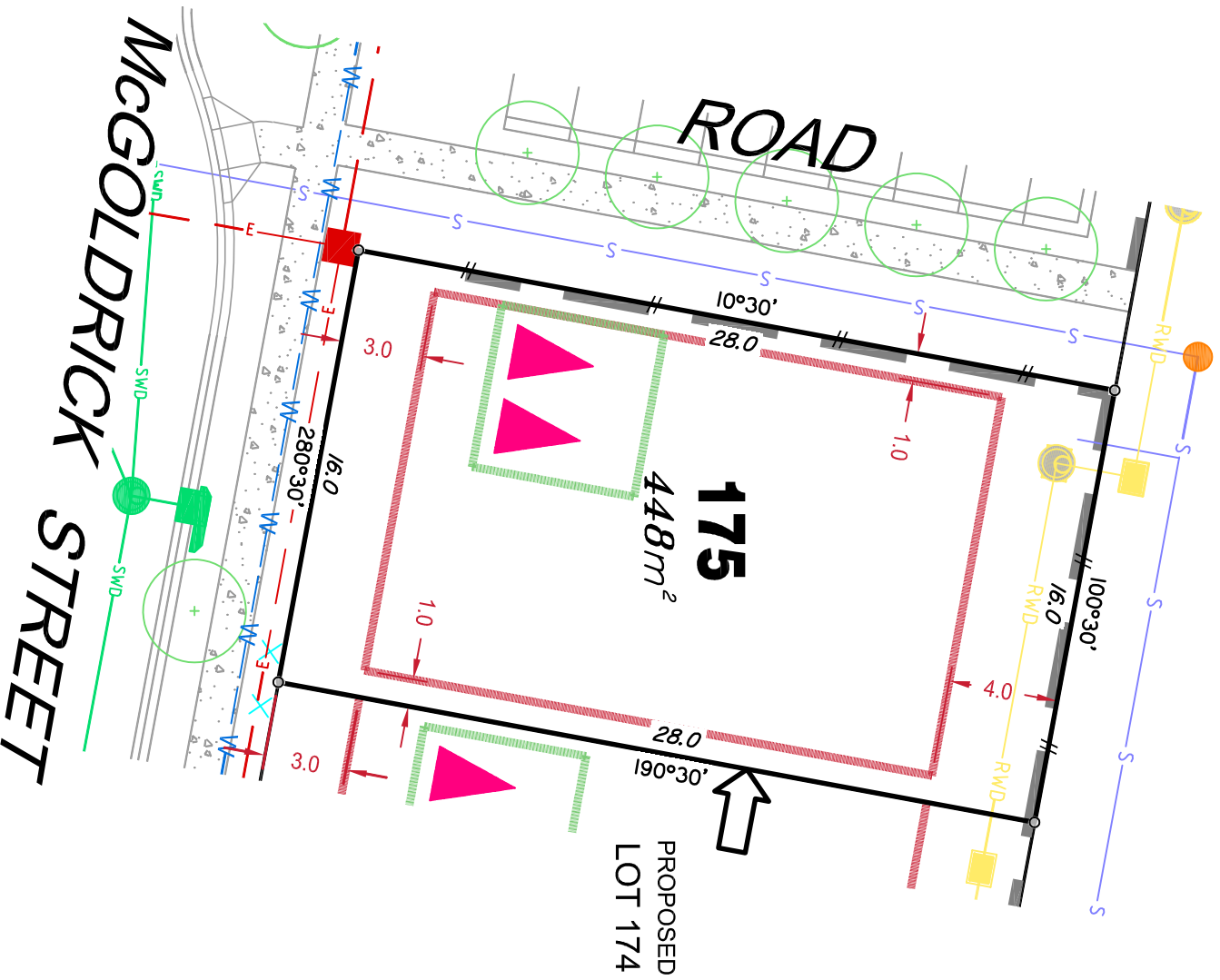
Allotments used as Multiple Residential Allotments in accordance with the approved Plan of Development may have a reduced primary road setback to 3.0metres as noted on the Plan of Development Table.

Compaction of any fill material placed on this site shall be completed to level one inspection and testing services in accordance with AS3798-2007.

Location of sewer, roofwater, stormwater, water reticulation and electrically lines, manholes and pits are those shown on engineering design drawings, supplied by Bradlees Meinhardt, and may differ from the as-constructed location.

## Plan of Development information Supplied by RPS Group PLC.

Copyright © Queensland Surveying Pty Ltd a Veris Company  
February 2017.



# LEGEND

Retaining Wall shown as:-

Sewer line

Sewer Manhole

Roofwater Drainage line and Catch Pit

Stormwater Drainage Line

Stormwater Manhole

Stormwater Pit

Water Main

Water Conduit

Water Service Point of Entry

Underground Electricity, Street Light,

Electricity Pillar & NBN

Developer Fencing

Concrete Pathway

Zero Setback Building Line

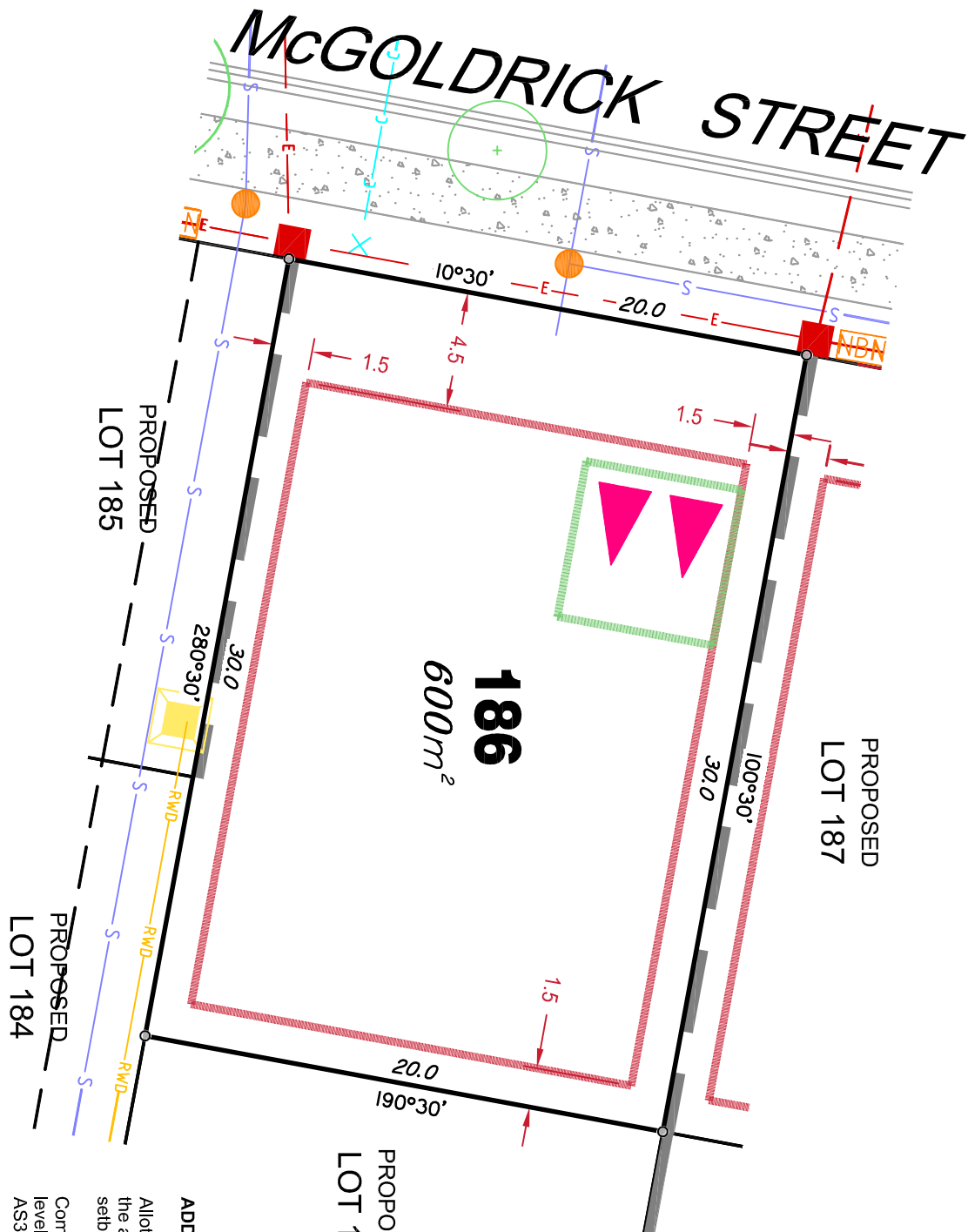
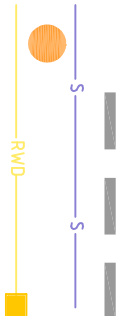
Proposed Services Easement

Indicative Parking Access Location

PROPOSED LOT 182

Landscape Street Tree

Indicative Building Envelope



## ADDITIONAL NOTES:

Allotments used as Multiple Residential Allotments in accordance with the approved Plan of Development may have a reduced primary road setback to 3.0metres as noted on the Plan of Development Table.

Compaction of any fill material placed on this site shall be completed to level one inspection and testing services in accordance with ASS3798-2007.

Location of sewer, roofwater, stormwater, water reticulation and electricity lines, manholes and pits are those shown on engineering design drawings, supplied by Bradlees Meinhardt, and may differ from the as-constructed location.

Plan of Development information Supplied by RPS Group PLC.

Copyright © Queensland Surveying Pty Ltd a Veris Company  
February 2017.

## LEGEND

Retaining Wall shown as:-

Sewer line

Sewer Manhole

Rooftwater Drainage line and Catch Pit

Stormwater Drainage Line

Stormwater Manhole

Stormwater Pit

Water Main

Water Conduit

Water Service Point of Entry

Underground Electricity, Street Light,

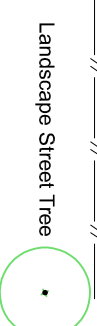
Electricity Pillar & NBN

Developer Fencing

Concrete Pathway



Landscape Street Tree



Zero Setback Building Line



Indicative Building Envelope



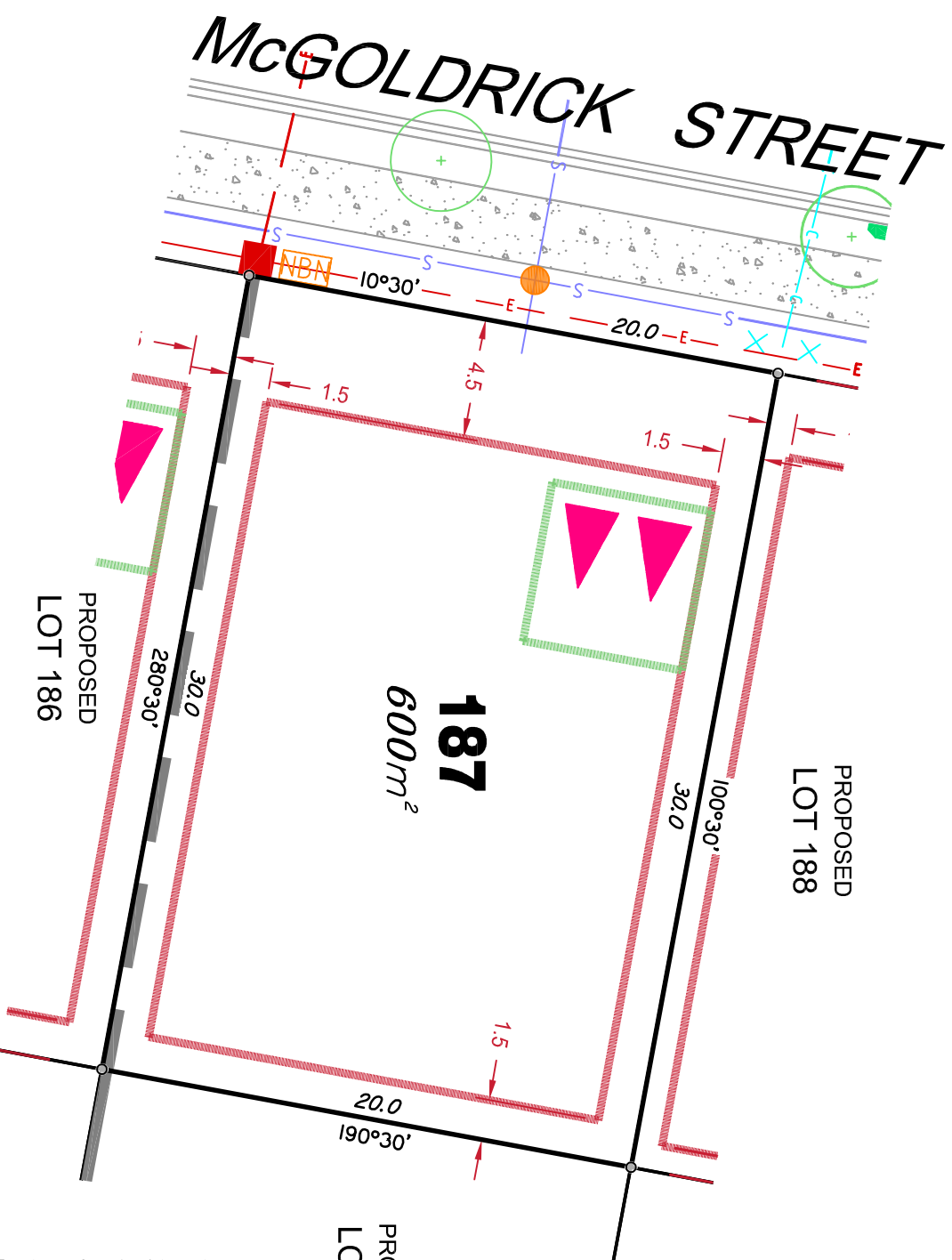
Proposed Services Easement



Indicative Parking Access Location



PROPOSED  
LOT 181



### ADDITIONAL NOTES:

Allotments used as Multiple Residential Allotments in accordance with the approved Plan of Development may have a reduced primary road setback to 3.0metres as noted on the Plan of Development Table.

Compaction of any fill material placed on this site shall be completed to level one inspection and testing services in accordance with AS3798-2007.

Location of sewer, rooftop, stormwater, water reticulation and electricity lines, manholes and pits are those shown on engineering design drawings, supplied by Bradlees Meinhardt, and may differ from the as-constructed location.

Plan of Development information Supplied by RPS Group PLC.

Copyright © Queensland Surveying Pty Ltd a Veris Company  
February 2017.



# LEGEND

Retaining Wall shown as:-

Sewer line

Sewer Manhole

Roofwater Drainage line and Catch Pit

Stormwater Drainage Line

Stormwater Manhole

Stormwater Pit

Water Main

Water Conduit

Water Service Point of Entry

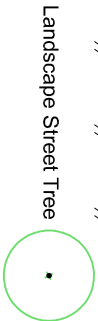
Underground Electricity, Street Light, Electricity Pillar & NBN

Developer Fencing

Concrete Pathway



Landscape Street Tree



Zero Setback Building Line



Proposed Services Easement



Indicative Parking Access Location



PROPOSED LOT 180

PROPOSED LOT 187

## ADDITIONAL NOTES:

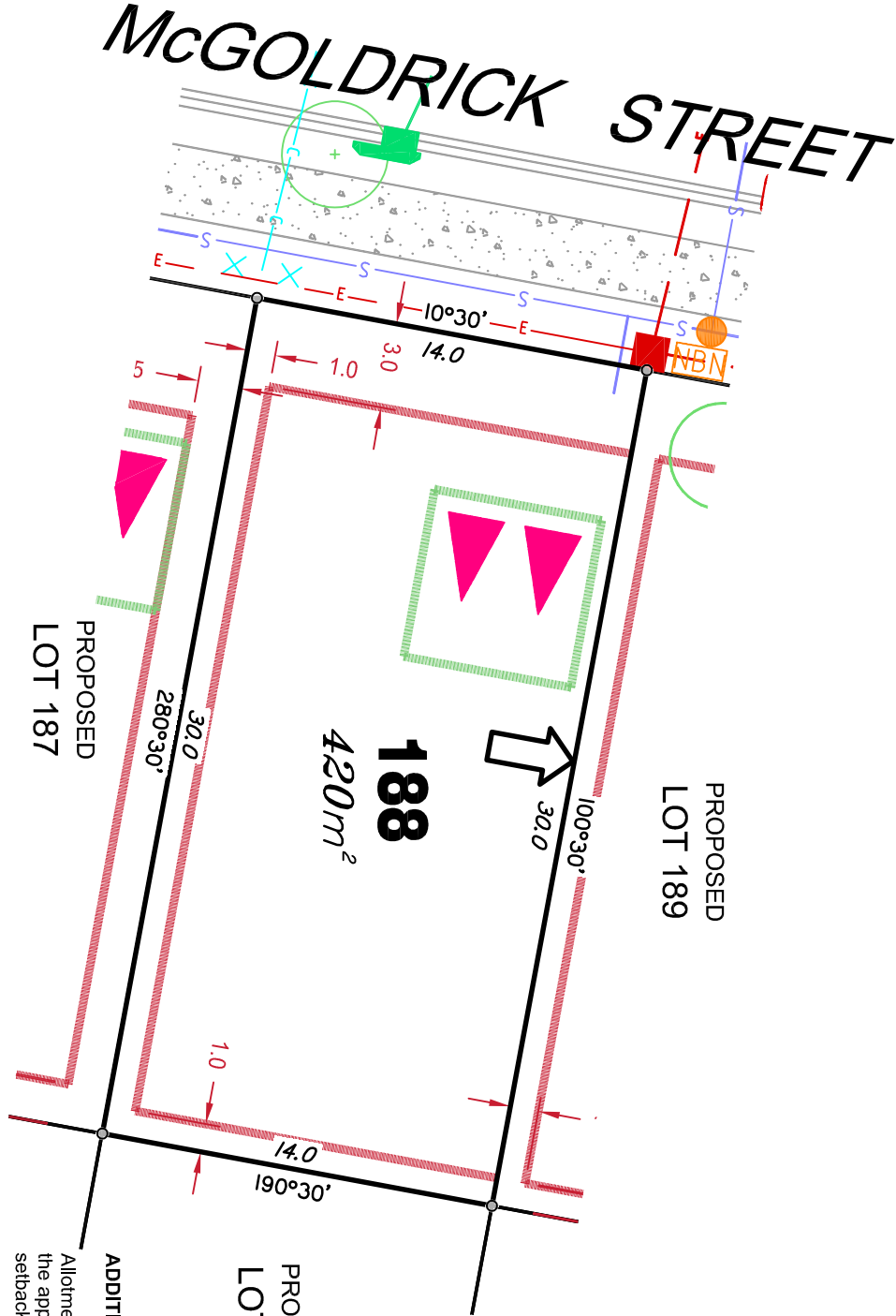
Allotments used as Multiple Residential Allotments in accordance with the approved Plan of Development may have a reduced primary road setback to 3.0metres as noted on the Plan of Development Table.

Compaction of any fill material placed on this site shall be completed to level one inspection and testing services in accordance with AS3798-2007.

Location of sewer, roofwater, stormwater, water reticulation and electricly lines, manholes and pits are those shown on engineering design drawings, supplied by Bradlees Meinhardt, and may differ from the as-constructed location.

Plan of Development information Supplied by RPS Group PLC.

Copyright © Queensland Surveying Pty Ltd a Veris Company  
February 2017.



# LEGEND

Retaining Wall shown as:-

Sewer line

Sewer Manhole

Roofwater Drainage line and Catch Pit

Stormwater Drainage Line

Stormwater Manhole

Stormwater Pit

Water Main

Water Conduit

Water Service Point of Entry

Underground Electricity, Street Light, Electricity Pillar & NBN

Developer Fencing

Concrete Pathway

Zero Setback Building Line

Proposed Services Easement

Indicative Parking Access Location

PROPOSED LOT 179

PROPOSED LOT 188

## ADDITIONAL NOTES:

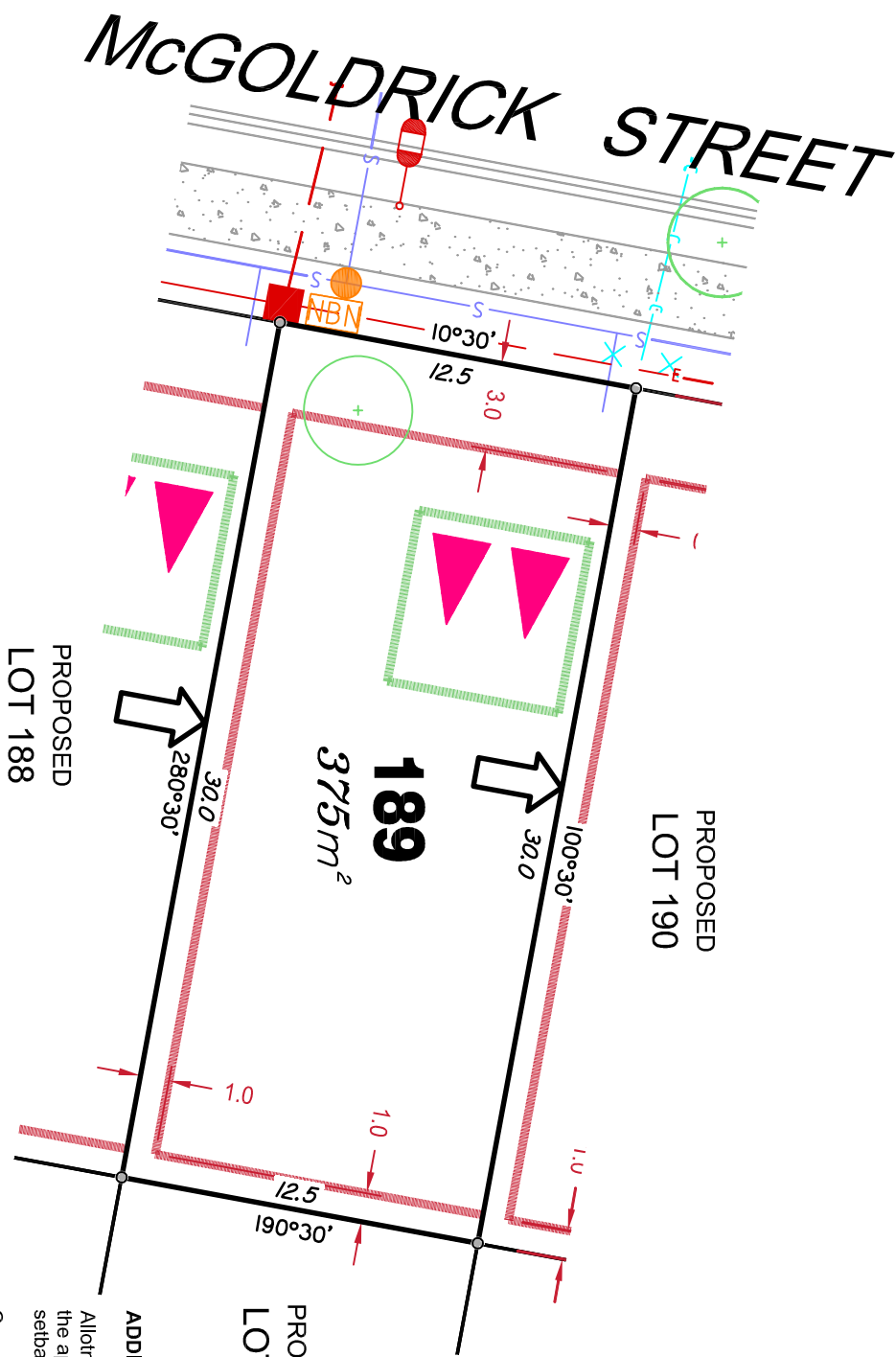
Allotments used as Multiple Residential Allotments in accordance with the approved Plan of Development may have a reduced primary road setback to 3.0metres as noted on the Plan of Development Table.

Compaction of any fill material placed on this site shall be completed to level one inspection and testing services in accordance with AS3798-2007.

Location of sewer, roofwater, stormwater, water reticulation and electricity lines, manholes and pits are those shown on engineering design drawings, supplied by Bradlees Meinhardt, and may differ from the as-constructed location.

Plan of Development information Supplied by RPS Group PLC.

Copyright © Queensland Surveying Pty Ltd a Veris Company  
February 2017.





# LEGEND

Retaining Wall shown as:-

Sewer line

Sewer Manhole

Rooftwater Drainage line and Catch Pit

Stormwater Drainage Line

Stormwater Manhole

Stormwater Pit

Water Main

Water Conduit

Water Service Point of Entry

Underground Electricity, Street Light,

Electricity Pillar & NBN

Developer Fencing

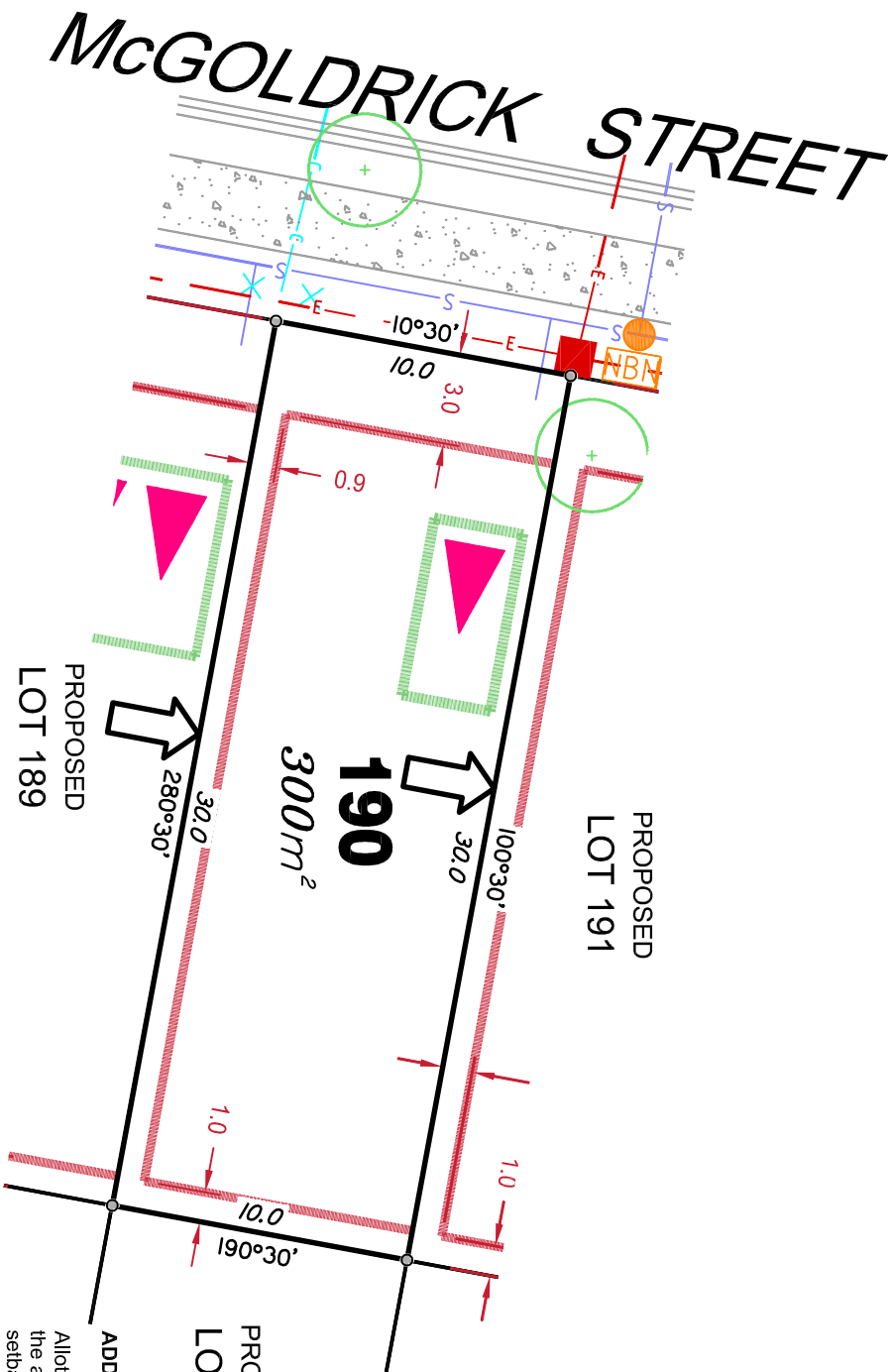
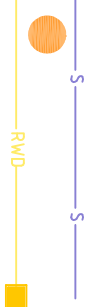
Concrete Pathway

Zero Setback Building Line

Proposed Services Easement

Indicative Parking Access Location

Landscape Street Tree



## ADDITIONAL NOTES:

Allotments used as Multiple Residential Allotments in accordance with the approved Plan of Development may have a reduced primary road setback to 3.0metres as noted on the Plan of Development Table.

Compaction of any fill material placed on this site shall be completed to level one inspection and testing services in accordance with AS3798-2007.

Location of sewer, rooftop, stormwater, water reticulation and electricity lines, manholes and pits are those shown on engineering design drawings, supplied by Bradlees Meinhardt, and may differ from the as-constructed location.

Plan of Development information Supplied by RPS Group PLC.

Retaining Wall shown as:-

- PROPOSED  
LOT 177

**ADDITIONAL NOTES:**

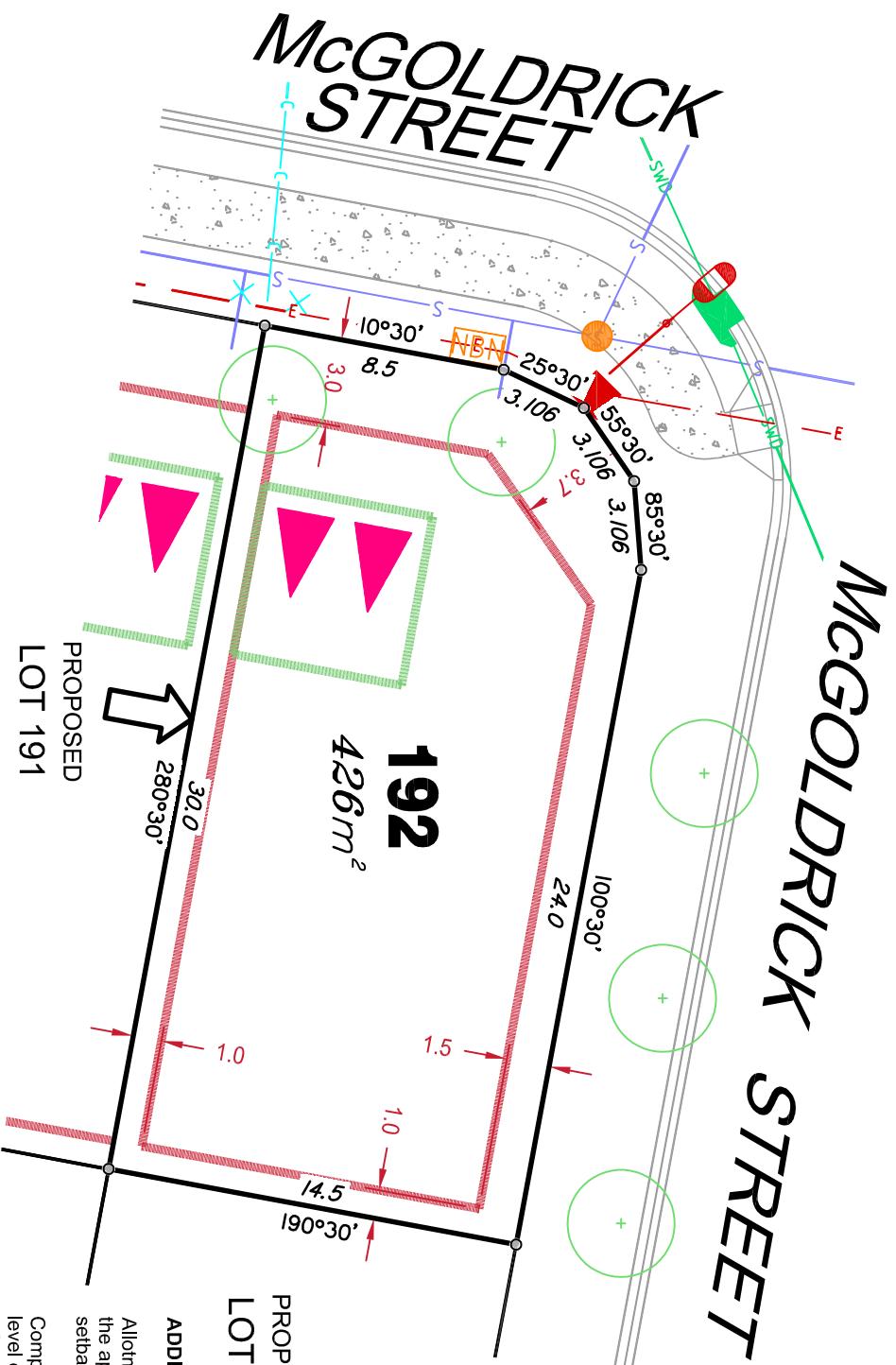
Compaction of any fill material placed on this site shall be completed to level one inspection and testing services in accordance with AS3798-2007.

Plan of Development information Supplied by RPS Group PLC.

## LEGEND

Retaining Wall shown as:-

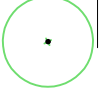
- 



## Developer Fencing



Landscape Street Tree



## Zero Setback Building Line



Indicative Building Envelope



## Proposed Services Easement



Indicative Parking Access Location



PROPOSED  
LOT 176

**ADDITIONAL NOTES:**

Allotments used as Multiple Residential Allotments in accordance with the approved Plan of Development may have a reduced primary road setback to 3.0metres as noted on the Plan of Development Table.

Compaction of any fill material placed on this site shall be completed to level one inspection and testing services in accordance with AS3798-2007.

Location of sewer, roofwater, stormwater, water reticulation and electricity lines, manholes and pits are those shown on engineering design drawings, supplied by Bradlees Meinhardt, and may differ from the as-constructed location.

Plan of Development information Supplied by RPS Group PLC.

**ADDITIONAL NOTES:**

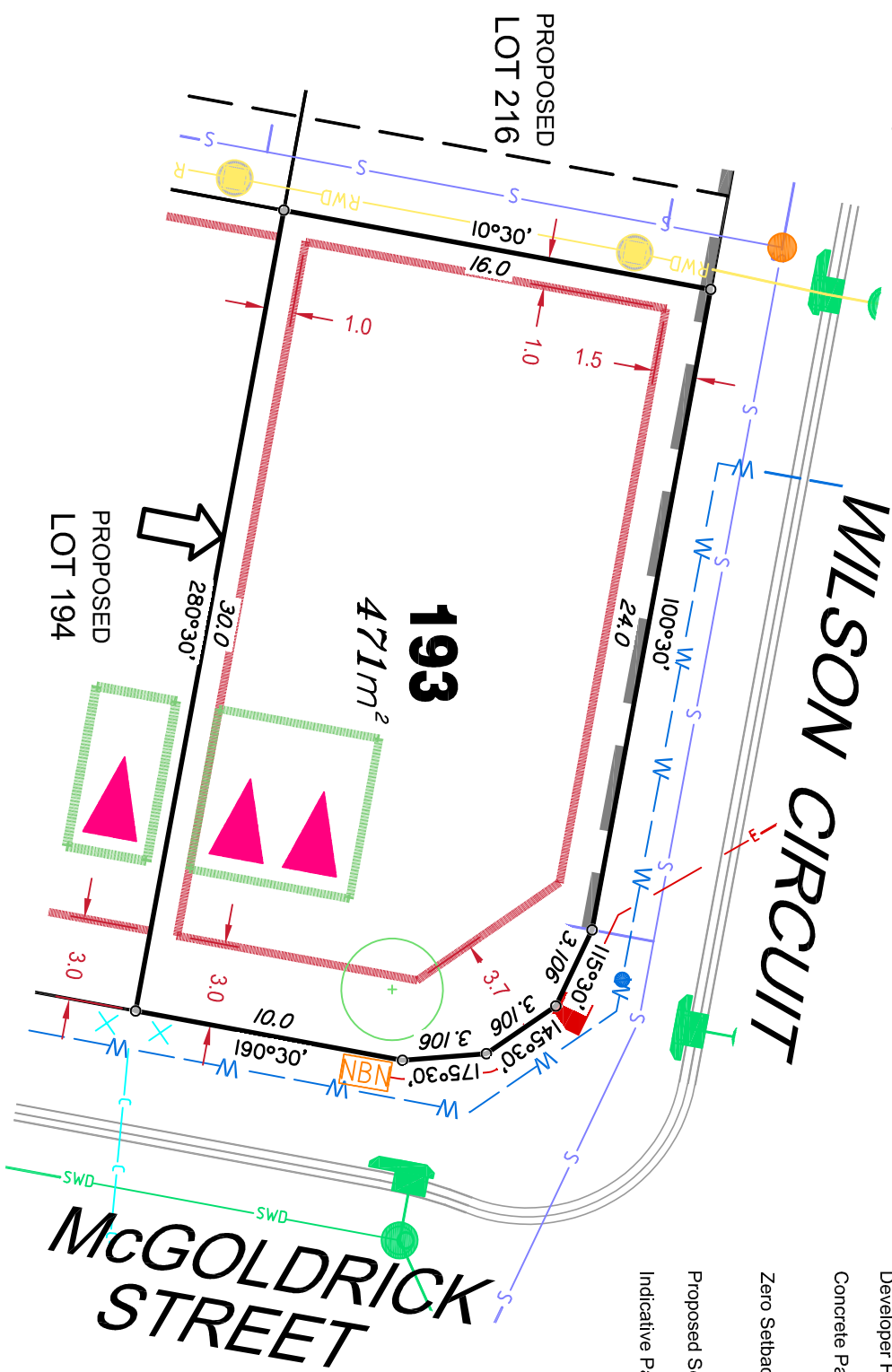
Allotments used as Multiple Residential Allotments in accordance with the approved Plan of Development may have a reduced primary road setback to 3.0metres as noted on the Plan of Development Table.

Compaction of any fill material placed on this site shall be completed to level one inspection and testing services in accordance with AS3798-2007.

Location of sewer, roofwater, stormwater, water reticulation and electricity lines, manholes and pits are those shown on engineering design drawings, supplied by Bradlees Meinhardt, and may differ from the as-constructed location.

Plan of Development information Supplied by RPS Group PLC.

Copyright © Queensland Surveying Pty Ltd a Veris Company  
February 2017.



**LEGEND**

Retaining Wall shown as:-

Sewer line

Sewer Manhole

Roofwater Drainage line and Catch Pit

Stormwater Drainage Line

Stormwater Manhole

Stormwater Pit

Water Main

Water Conduit

Water Service Point of Entry

Underground Electricity, Street Light, Electricity Pillar & NBN

Developer Fencing

Concrete Pathway

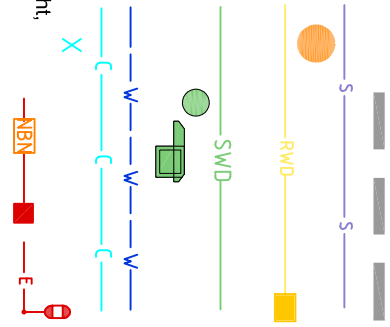
Zero Setback Building Line

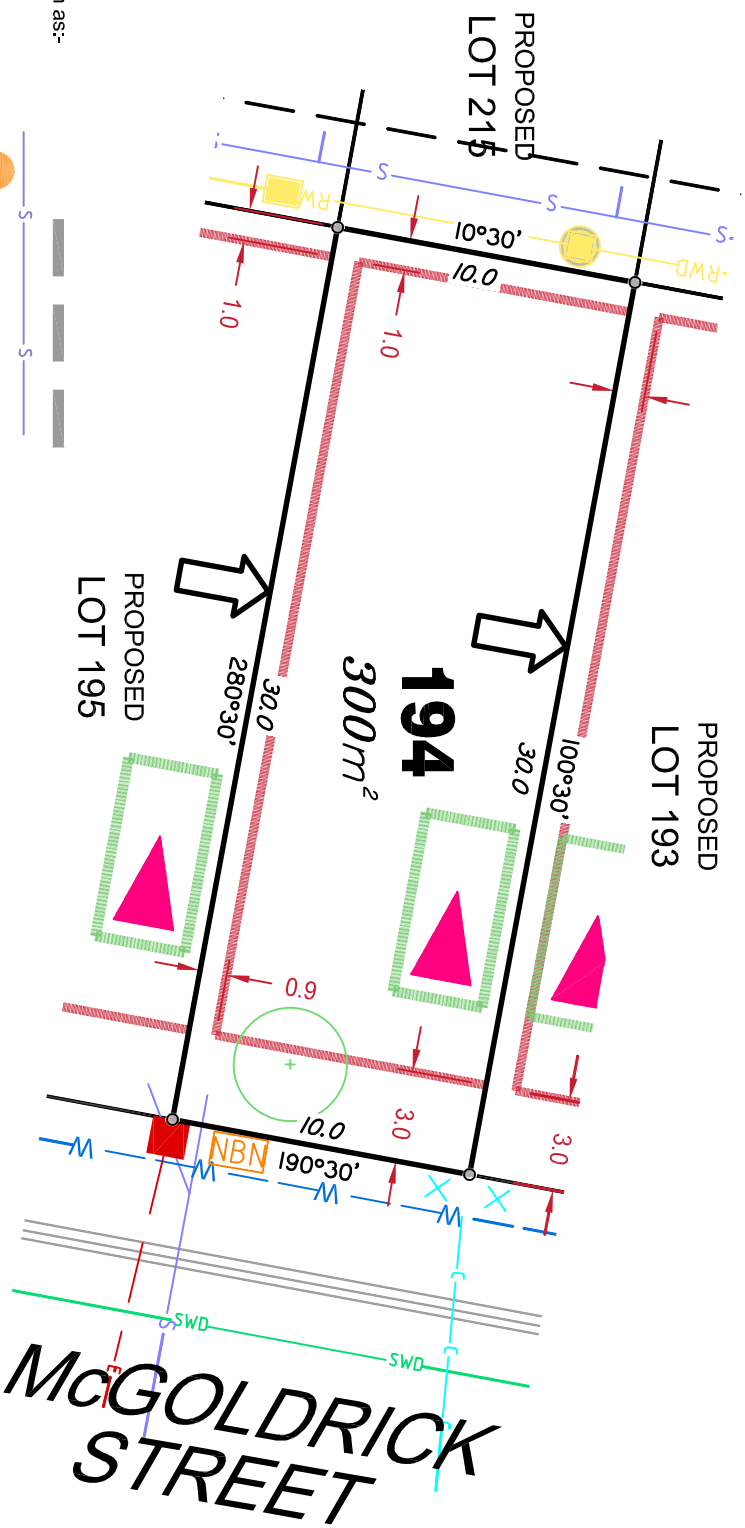
Proposed Services Easement

Indicative Parking Access Location

Landscape Street Tree

Indicative Building Envelope





## LEGEND

Retaining Wall shown as:-

Sewer line

Sewer Manhole

Roofwater Drainage line and Catch Pit

Stormwater Drainage Line

Stormwater Manhole

Stormwater Pit

Water Main

Water Conduit

Water Service Point of Entry

Underground Electricity, Street Light, Electricity Pillar & NBN

Developer Fencing

Concrete Pathway

Zero Setback Building Line

Proposed Services Easement

Indicative Parking Access Location



Indicative Building Envelope



Indicative Building Envelope

## ADDITIONAL NOTES:

Allotments used as Multiple Residential Allotments in accordance with the approved Plan of Development may have a reduced primary road setback to 3.0metres as noted on the Plan of Development Table.

Compaction of any fill material placed on this site shall be completed to level one inspection and testing services in accordance with AS3798-2007.

Location of sewer, roofwater, stormwater, water reticulation and electricity lines, manholes and pits are those shown on engineering design drawings, supplied by Bradlees Meinhardt, and may differ from the as-constructed location.

Plan of Development information Supplied by RPS Group PLC.

Copyright © Queensland Surveying Pty Ltd a Veris Company  
February 2017.



## LEGEND

Retaining Wall shown as:-

Sewer line

Sewer Manhole

Roofwater Drainage line and

Catch Pit

Stormwater Drainage Line

Stormwater Manhole

Stormwater Pit

Water Main

Water Conduit

Water Service Point of Entry

Underground Electricity, Street Light,

Electricity Pillar & NBN

Developer Fencing

Concrete Pathway



Landscape Street Tree



Zero Setback Building Line



Indicative Building Envelope



Proposed Services Easement



Indicative Parking Access Location



## ADDITIONAL NOTES:

Allotments used as Multiple Residential Allotments in accordance with the approved Plan of Development may have a reduced primary road setback to 3.0metres as noted on the Plan of Development Table.

Compaction of any fill material placed on this site shall be completed to level one inspection and testing services in accordance with AS3798-2007.

Location of sewer, roofwater, stormwater, water reticulation and electricity lines, manholes and pits are those shown on engineering design drawings, supplied by Bradlees Meinhardt, and may differ from the as-constructed location.

Plan of Development information Supplied by RPS Group PLC.

Copyright © Queensland Surveying Pty Ltd a Veris Company  
February 2017.





## LEGEND

Retaining Wall shown as:-

Sewer line

Sewer Manhole

Roofwater Drainage line and Catch Pit

Stormwater Drainage Line

Stormwater Manhole

Stormwater Pit

Water Main

Water Conduit

Water Service Point of Entry

Underground Electricity, Street Light,

Electricity Pillar & NBN

Developer Fencing

Concrete Pathway

Zero Setback Building Line

Proposed Services Easement

Indicative Parking Access Location

## ADDITIONAL NOTES:

Allotments used as Multiple Residential Allotments in accordance with the approved Plan of Development may have a reduced primary road setback to 3.0metres as noted on the Plan of Development Table.

Compaction of any fill material placed on this site shall be completed to level one inspection and testing services in accordance with AS3798-2007.

Location of sewer, roofwater, stormwater, water reticulation and electricity lines, manholes and pits are those shown on engineering design drawings, supplied by Bradlees Meinhardt, and may differ from the as-constructed location.

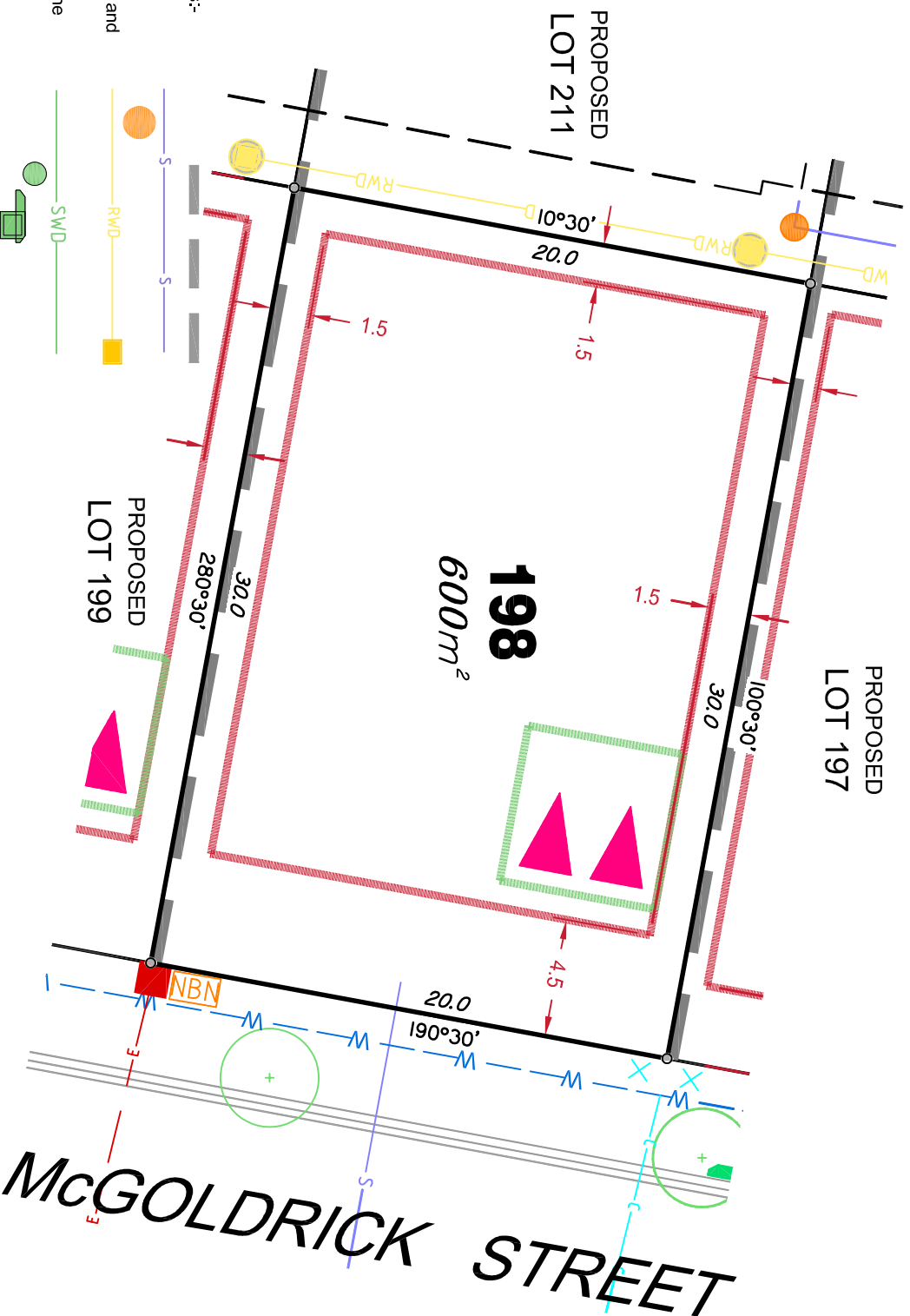
Plan of Development information Supplied by RPS Group PLC.

Copyright © Queensland Surveying Pty Ltd a Veris Company  
February 2017.



Indicative Parking Access Location





## LEGEND

Retaining Wall shown as:-

Sewer line

Sewer Manhole

Roofwater Drainage line and Catch Pit

Stormwater Drainage Line

Stormwater Manhole

Stormwater Pit

Water Main

Water Conduit

Water Service Point of Entry

Underground Electricity, Street Light,

Electricity Pillar & NBN

Developer Fencing

Concrete Pathway

Zero Setback Building Line

Proposed Services Easement

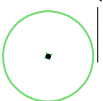
Indicative Parking Access Location



Indicative Building Envelope



Landscape Street Tree



## ADDITIONAL NOTES:

Allotments used as Multiple Residential Allotments in accordance with the approved Plan of Development may have a reduced primary road setback to 3.0metres as noted on the Plan of Development Table.

Compaction of any fill material placed on this site shall be completed to level one inspection and testing services in accordance with AS3798-2007.

Location of sewer, roofwater, stormwater, water reticulation and electricity lines, manholes and pits are those shown on engineering design drawings, supplied by Bradlees Meinhardt, and may differ from the as-constructed location.

Plan of Development information Supplied by RPS Group PLC.

Copyright © Queensland Surveying Pty Ltd a Veris Company  
February 2017.

Allotments used as Multiple Residential Allotments in accordance with the approved Plan of Development may have a reduced primary road setback to 3.0metres as noted on the Plan of Development Table.

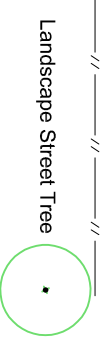
Location of sewer, roofwater, stormwater, water reticulation and electricity lines, manholes and pits are those shown on engineering design drawings, supplied by Bradlees Meinhardt, and may differ from the as-constructed location.

Copyright © Queensland Surveying Pty Ltd a Veris Company  
February 2017.



Retaining Wall shown as:-

- ## Developer Fencing



Indicative Building Envelope

nt





## LEGEND

Retaining Wall shown as:-

Sewer line

## Sewer Manhole

Roofwater Drainage line and

## Catch Pit

## Stormwater Drainage Line

## Stormwater Manhole

## Stormwater

## Water Main

Water Cond

### Water Service Point of Entry

## Underground Electricity

Electricity Pillar &amp; NBN

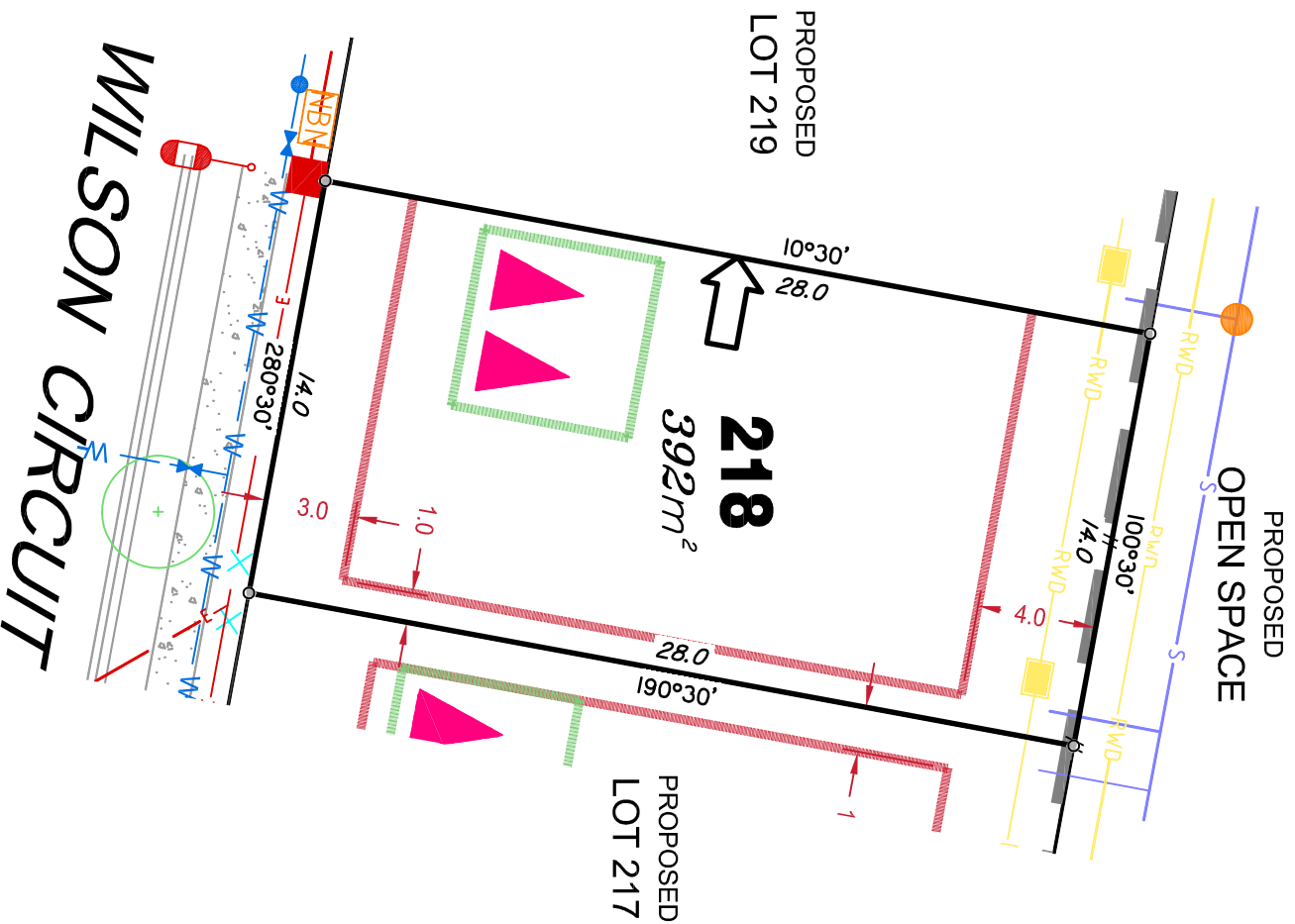
## Developer Fencing

## Concrete Pathway

## Zero Setback Building Line

Proposed Services Easement |

Indicative Parking Access Location



**ADDITIONAL NOTES:**

Allotments used as Multiple Residential Allotments in accordance with the approved Plan of Development may have a reduced primary road setback to 3.0metres as noted on the Plan of Development Table.

Compaction of any fill material placed on this site shall be completed to level one inspection and testing services in accordance with AS3798-2007.

Location of sewer, roofwater, stormwater, water reticulation and electricity lines, manholes and pits are those shown on engineering design drawings, supplied by Bradlees Meinhardt, and may differ from the as-constructed location.

Plan of Development information Supplied by RPS Group PLC.