

Flagstone 

Latitude Neighbourhood



Enjoy the
freedom.

PEET



NORTH

Disclaimer: The information shown on this plan has been prepared with care, however is subject to change and cannot form part of any other offer or contract, other than to identify the lot number and location of the allotment being purchased. Whilst every reasonable care has been taken in preparing this information, PEET does not warrant its accuracy. Interested parties must be sure to undertake their own independent enquiries and, where applicable, obtain appropriate professional advice relevant to their particular circumstances. All information is subject to change without notice. Lot information is subject to survey and Titles Office approval. For additional details, please refer to the Design Guidelines. Photographs are indicative only. Final housing product mix may differ from that illustrated. The street names are subject to change. Map indicative only. *Currently scheduled to open in 2024 for K - 5. Version 2 | May 2022.

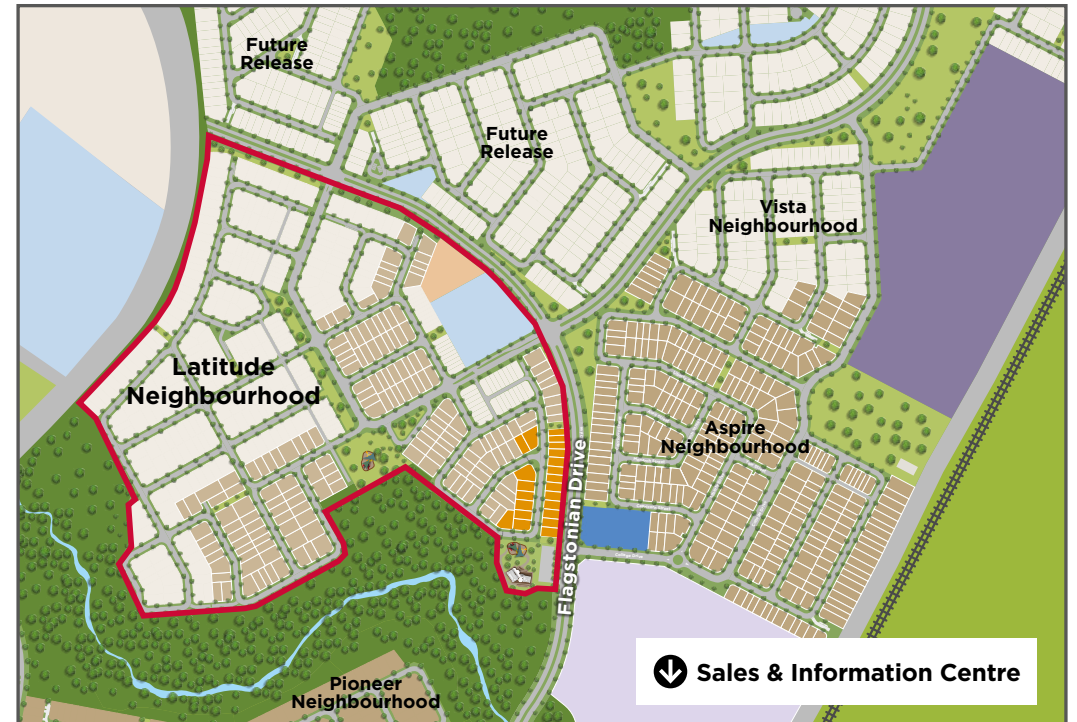
Flagstone Regional Park
2 mins 

Future Town Centre
3 mins 

Latitude Neighbourhood.

Enjoy the freedom.

Stretch out and live a little in the new **Latitude** release at Flagstone. Indulge in all **Latitude** has to offer from green ribbons overlooking Sandy Creek to beautiful open spaces including a local park, forming a perfect extension of your family home with plenty of space to roam and play.



Open 7 days

Monday 12pm - 5pm

Tuesday to Sunday 10am - 5pm

Sales and Information Centre
Homestead Drive, Jimboomba

Call (07) 5540 3068 or email flagstone@peet.com.au
flagstone.com.au