



Retaining Wall Lot 2275
 Min Height:- 0.6m
 Max Height:- 0.7m
 Average Height:- 0.65m

Retaining Wall Lot 2275
 Min Height:- 1.1m
 Max Height:- 1.7m
 Average Height:- 1.4m

ADDITIONAL NOTES:

The LOT dimensions and area shown hereon are subject to final field survey and also to the requirements of Council and any other authority which may have requirements under any relevant legislation

Final surface contours shown hereon have been supplied by Peak Urban.

Location of retaining walls are as shown on Engineering design drawings. Their as-constructed location may differ from their design location. Retaining wall heights have been supplied by Peak Urban. **The engineering detail shown hereon are preliminary only and are subject to change in final design and statutory approvals**

Compaction of any fill material placed on this site shall be completed to level one inspection and testing services in accordance with AS3798-2007.

Depth of fill values are calculated to the pre-development surface.
 Copyright © Veris Australia Pty Ltd
 11/03/2022.

**FLAGSTONE
 PRECINCT 1 STAGE 5B(i)**
 For
**PEET FLAGSTONE
 CITY PTY LTD**

IMPORTANT NOTES:
 (These notes are an integral part of this plan)

This plan has been prepared for **PEET FLAGSTONE CITY PTY LTD** for the purposes of **A Disclosure Plan Under the Land Sales Act 1984 (as amended)**.

It is not to be used by any other person or corporation or for any other purposes and is subject to the following limitations:

Please refer to the approved Development Application for conditions relating to the LOT and to approved Operational Works drawings for services location and possible easements.

THESE DESIGNS AND DRAWINGS ARE COPYRIGHT AND ARE NOT TO BE USED OR REPRODUCED WITHOUT THE WRITTEN PERMISSION OF VERIS

Data Sources
 Cadastral Boundaries
 30109-LC-Master(CW) FS94 2014.dwg
 Engineering Design
 FLAGSTONE - BASE - STAGE 5A 5B - DISCLOSURE INFO - 27 01 2022.dwg
 Final Surface Contours
 FLAGSTONE - BASE - STAGE 5A 5B - DISCLOSURE INFO - 27 01 2022.dwg
 Depth of Fill
 FLAGSTONE - DEPTH RANGE CONTOURS - STAGE 5A 5B - DISCLOSURE INFO - 27 01 2022.dwg

Issue	Revisions	Date	Drawn
A	Original	11.03.2022	BK

Locality: FLAGSTONE
 Local Authority: LOGAN CITY COUNCIL
 Horizontal Meridian: MGA, Zone 56
 Vertical Level Datum: AHD D
 Scale: 1:250 @ A4
 Designed: Peak Urban
 Drawn: BK 11/03/2022
 Checked: DE 11/03/2022
 Plot Date: 11 Mar, 2022
 Computer File Ref: 30109-St5B(i)-DP-(A).dwg

**DISCLOSURE PLAN
 of Proposed LOT 2275
 being part of
 Lot 911
 on SP321079**



BRISBANE (07) 3686 4700 WHITSUNDAYS (07) 4945 6600

MACKAY (07) 4957 9700 CAIRNS (07) 4252 9400

veris.com.au
 ACN 615 735 727
 Veris Australia Pty Ltd

Drawing No 30109-DP- 2275 Issue A

LEGEND

Final surface contours based on A.H.D. datum at an interval of 0.5m, shown as: 15.5

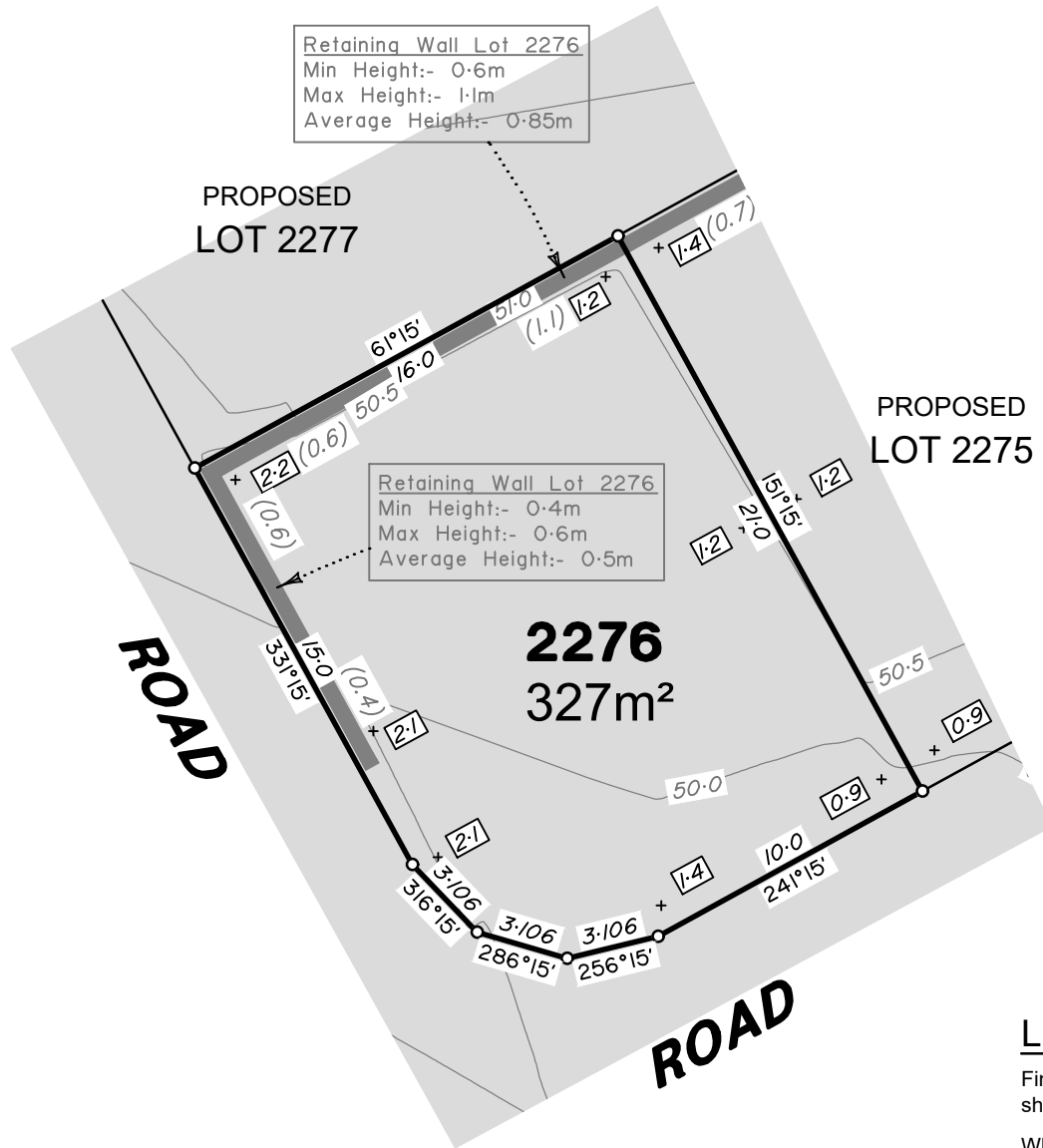
Where applicable, areas to be filled are shown as:

Depth of fill, in metres, shown as:- + 0.5

Retaining wall and retaining wall height, shown on the lower side of the wall, have been taken from plans supplied by Peak Urban and shown as:

Bin Pad Location shown as:

12.5m 50 mm 25m 100 mm 37.5m 150 mm SCALE BAR

**ADDITIONAL NOTES:**

The LOT dimensions and area shown hereon are subject to final field survey and also to the requirements of Council and any other authority which may have requirements under any relevant legislation

Final surface contours shown hereon have been supplied by Peak Urban.

Location of retaining walls are as shown on Engineering design drawings. Their as-constructed location may differ from their design location. Retaining wall heights have been supplied by Peak Urban. **The engineering detail shown hereon are preliminary only and are subject to change in final design and statutory approvals**

Compaction of any fill material placed on this site shall be completed to level one inspection and testing services in accordance with AS3798-2007.

Depth of fill values are calculated to the pre-development surface.
Copyright © Veris Australia Pty Ltd
11/03/2022.

**FLAGSTONE
PRECINCT 1 STAGE 5B(i)**
For
**PEET FLAGSTONE
CITY PTY LTD**

IMPORTANT NOTES:
(These notes are an integral part of this plan)

This plan has been prepared for PEET FLAGSTONE CITY PTY LTD for the purposes of a **Disclosure Plan Under the Land Sales Act 1984 (as amended)**.

It is not to be used by any other person or corporation or for any other purposes and is subject to the following limitations:

Please refer to the approved Development Application for conditions relating to the LOT and to approved Operational Works drawings for services location and possible easements.

THESE DESIGNS AND DRAWINGS ARE COPYRIGHT AND ARE NOT TO BE USED OR REPRODUCED WITHOUT THE WRITTEN PERMISSION OF VERIS

Data Sources
Cadastral Boundaries
30109-LC-Master(CW) FS94 2014.dwg
Engineering Design
FLAGSTONE - BASE - STAGE 5A 5B - DISCLOSURE INFO - 27 01 2022.dwg
Final Surface Contours
FLAGSTONE - BASE - STAGE 5A 5B - DISCLOSURE INFO - 27 01 2022.dwg
Depth of Fill
FLAGSTONE - DEPTH RANGE CONTOURS - STAGE 5A 5B - DISCLOSURE INFO - 27 01 2022.dwg

Issue	Revisions	Date	BK	Drawn
A	Original	11.03.2022	BK	

Locality: FLAGSTONE
Local Authority: LOGAN CITY COUNCIL
Horizontal Meridian: MGA, Zone 56
Vertical Level Datum: AHD D
Scale: 1:250 @ A4
Designed: Peak Urban
Drawn: BK 11/03/2022
Checked: DE 11/03/2022
Plot Date: 11 Mar, 2022
Computer File Ref: 30109-St5B(i)-DP-(A).dwg

**DISCLOSURE PLAN
of Proposed LOT 2276
being part of
Lot 911
on SP321079**



BRISBANE (07) 3686 4700 WHITSUNDAYS (07) 4945 6600

MACKAY (07) 4957 9700 CAIRNS (07) 4252 9400

veris.com.au
ACN 615 735 727
Veris Australia Pty Ltd

Drawing No
30109-DP- 2276

Issue
A

LEGEND

Final surface contours based on A.H.D. datum at an interval of 0.5m, shown as: 15.5

Where applicable, areas to be filled are shown as:

Depth of fill, in metres, shown as:- + 0.5

Retaining wall and retaining wall height, shown on the lower side of the wall, have been taken from plans supplied by Peak Urban and shown as: (1.2)

Bin Pad Location shown as:

0 12.5m 50 mm 25m 100 mm 37.5m 150 mm SCALE BAR



PROPOSED
LOT 2295

2296
699m²

NEW BEITH ROAD

ROAD

ROAD

ADDITIONAL NOTES:

The LOT dimensions and area shown hereon are subject to final field survey and also to the requirements of Council and any other authority which may have requirements under any relevant legislation

Final surface contours shown hereon have been supplied by Peak Urban.

Location of retaining walls are as shown on Engineering design drawings. Their as-constructed location may differ from their design location. Retaining wall heights have been supplied by Peak Urban. **The engineering detail shown hereon are preliminary only and are subject to change in final design and statutory approvals**

Compaction of any fill material placed on this site shall be completed to level one inspection and testing services in accordance with AS3798-2007.

Depth of fill values are calculated to the pre-development surface.
Copyright © Veris Australia Pty Ltd
11/03/2022.

LEGEND

Final surface contours based on A.H.D. datum at an interval of 0.5m, shown as: 15.5

Where applicable, areas to be filled are shown as:

Depth of fill, in metres, shown as: - +0.5

Retaining wall and retaining wall height, shown on the lower side of the wall, have been taken from plans supplied by Peak Urban and shown as: (1.2)

Bin Pad Location shown as: *



**FLAGSTONE
PRECINCT 1 STAGE 5B(i)**
For
**PEET FLAGSTONE
CITY PTY LTD**

IMPORTANT NOTES:
(These notes are an integral part of this plan)

This plan has been prepared for **PEET FLAGSTONE CITY PTY LTD** for the purposes of **A Disclosure Plan Under the Land Sales Act 1984 (as amended)**.

It is not to be used by any other person or corporation or for any other purposes and is subject to the following limitations:

Please refer to the approved Development Application for conditions relating to the LOT and to approved Operational Works drawings for services location and possible easements.

THESE DESIGNS AND DRAWINGS ARE COPYRIGHT AND ARE NOT TO BE USED OR REPRODUCED WITHOUT THE WRITTEN PERMISSION OF VERIS

Data Sources
Cadastral Boundaries
30109-LC-Master(CW) FS94 2014.dwg
Engineering Design
FLAGSTONE - BASE - STAGE 5A 5B - DISCLOSURE INFO - 27 01 2022.dwg
Final Surface Contours
FLAGSTONE - BASE - STAGE 5A 5B - DISCLOSURE INFO - 27 01 2022.dwg
Depth of Fill
FLAGSTONE - DEPTH RANGE CONTOURS - STAGE 5A 5B - DISCLOSURE INFO - 27 01 2022.dwg

Issue	Revisions	Date	BK	Drawn
A	Original	11.03.2022	BK	

Locality: FLAGSTONE
Local Authority: LOGAN CITY COUNCIL
Horizontal Meridian: MGA, Zone 56
Vertical Level Datum: AHD D
Scale: 1:250 @ A4
Designed: Peak Urban
Drawn: BK 11/03/2022
Checked: DE 11/03/2022
Plot Date: 11 Mar, 2022
Computer File Ref: 30109-St5B-DP-(A).dwg

DISCLOSURE PLAN
of Proposed LOT 2296
being part of
Lot 911
on SP321079



veris

BRISBANE (07) 3688 4700 WHITSUNDAYS (07) 4945 6600

MACKAY (07) 4957 9700 CAIRNS (07) 4252 9400

veris.com.au
ACN 615 735 727
Veris Australia Pty Ltd

Drawing No
30109-DP- 2296

Issue
A



Retaining Wall Lot 2307
 Min Height:- 0.8m
 Max Height:- 1.2m
 Average Height:- 1.0m

PROPOSED
 LOT 2306

PROPOSED
 LOT 2277

2307
 516m²

Retaining Wall Lot 2307
 Min Height:- 0.3m
 Max Height:- 0.3m
 Average Height:- 0.3m

PROPOSED
 LOT 2275

Retaining Wall Lot 2275
 Min Height:- 1.1m
 Max Height:- 1.7m
 Average Height:- 1.4m

ROAD

ROAD

ADDITIONAL NOTES:

The LOT dimensions and area shown hereon are subject to final field survey and also to the requirements of Council and any other authority which may have requirements under any relevant legislation

Final surface contours shown hereon have been supplied by Peak Urban.

Location of retaining walls are as shown on Engineering design drawings. Their as-constructed location may differ from their design location. Retaining wall heights have been supplied by Peak Urban. **The engineering detail shown hereon are preliminary only and are subject to change in final design and statutory approvals**

Compaction of any fill material placed on this site shall be completed to level one inspection and testing services in accordance with AS3798-2007.

Depth of fill values are calculated to the pre-development surface.
 Copyright © Veris Australia Pty Ltd
 11/03/2022.

**FLAGSTONE
 PRECINCT 1 STAGE 5B(i)**
 For
**PEET FLAGSTONE
 CITY PTY LTD**

IMPORTANT NOTES:
 (These notes are an integral part of this plan)

This plan has been prepared for **PEET FLAGSTONE CITY PTY LTD** for the purposes of **A Disclosure Plan Under the Land Sales Act 1984 (as amended)**.

It is not to be used by any other person or corporation or for any other purposes and is subject to the following limitations:

Please refer to the approved Development Application for conditions relating to the LOT and to approved Operational Works drawings for services location and possible easements.

THESE DESIGNS AND DRAWINGS ARE COPYRIGHT AND ARE NOT TO BE USED OR REPRODUCED WITHOUT THE WRITTEN PERMISSION OF VERIS

Data Sources
 Cadastral Boundaries
 30109-LC-Master(CW) FS94 2014.dwg
 Engineering Design
 FLAGSTONE - BASE - STAGE 5A 5B - DISCLOSURE INFO - 27 01 2022.dwg
 Final Surface Contours
 FLAGSTONE - BASE - STAGE 5A 5B - DISCLOSURE INFO - 27 01 2022.dwg
 Depth of Fill
 FLAGSTONE - DEPTH RANGE CONTOURS - STAGE 5A 5B - DISCLOSURE INFO - 27 01 2022.dwg

Issue	Revisions	Date	BK	Drawn
A	Original	11.03.2022		

Locality: FLAGSTONE
 Local Authority: LOGAN CITY COUNCIL
 Horizontal Meridian: MGA, Zone 56
 Vertical Level Datum: AHD D
 Scale: 1:250 @ A4
 Designed: Peak Urban
 Drawn: BK 11/03/2022
 Checked: DE 11/03/2022
 Plot Date: 11 Mar, 2022
 Computer File Ref: 30109-St5B-DP-(A).dwg

**DISCLOSURE PLAN
 of Proposed LOT 2307**
 being part of
 Lot 911
 on SP321079



BRISBANE (07) 3688 4700 WHITSUNDAYS (07) 4945 6600

MACKAY (07) 4957 9700 CAIRNS (07) 4252 9400

veris.com.au
 ACN 615 735 727
 Veris Australia Pty Ltd

Drawing No 30109-DP- 2307 Issue A

LEGEND

Final surface contours based on A.H.D. datum at an interval of 0.5m, shown as: 15.5

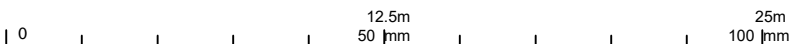
Where applicable, areas to be filled are shown as:

Depth of fill, in metres, shown as:- + 0.5

Retaining wall and retaining wall height, shown on the lower side of the wall, have been taken from plans supplied by Peak Urban and shown as:

Bin Pad Location shown as:

150 mm SCALE BAR





PROPOSED LOT 2309

PROPOSED LOT 2319

2308
426m²

ROAD

ROAD

Retaining Wall Lot 2308
Min Height:- 1.0m
Max Height:- 2.6m
Average Height:- 1.8m

Retaining Wall Lot 2308
Min Height:- 0.6m
Max Height:- 1.4m
Average Height:- 1.0m

ADDITIONAL NOTES:

The LOT dimensions and area shown hereon are subject to final field survey and also to the requirements of Council and any other authority which may have requirements under any relevant legislation

Final surface contours shown hereon have been supplied by Peak Urban.

Location of retaining walls are as shown on Engineering design drawings. Their as-constructed location may differ from their design location. Retaining wall heights have been supplied by Peak Urban. **The engineering detail shown hereon are preliminary only and are subject to change in final design and statutory approvals**

Compaction of any fill material placed on this site shall be completed to level one inspection and testing services in accordance with AS3798-2007.

Depth of fill values are calculated to the pre-development surface.
Copyright © Veris Australia Pty Ltd
11/03/2022.

**FLAGSTONE
PRECINCT 1 STAGE 5B(i)**
For
**PEET FLAGSTONE
CITY PTY LTD**

IMPORTANT NOTES:
(These notes are an integral part of this plan)

This plan has been prepared for PEET FLAGSTONE CITY PTY LTD for the purposes of **A Disclosure Plan Under the Land Sales Act 1984 (as amended)**.

It is not to be used by any other person or corporation or for any other purposes and is subject to the following limitations:

Please refer to the approved Development Application for conditions relating to the LOT and to approved Operational Works drawings for services location and possible easements.

THESE DESIGNS AND DRAWINGS ARE COPYRIGHT AND ARE NOT TO BE USED OR REPRODUCED WITHOUT THE WRITTEN PERMISSION OF VERIS

Data Sources
Cadastral Boundaries
30109-LC-Master(CW) FS94 2014.dwg
Engineering Design
FLAGSTONE - BASE - STAGE 5A 5B - DISCLOSURE INFO - 27 01 2022.dwg
Final Surface Contours
FLAGSTONE - BASE - STAGE 5A 5B - DISCLOSURE INFO - 27 01 2022.dwg
Depth of Fill
FLAGSTONE - DEPTH RANGE CONTOURS - STAGE 5A 5B - DISCLOSURE INFO - 27 01 2022.dwg

Issue	Revisions	Date	BK	Drawn
A	Original	11.03.2022	BK	

Locality: FLAGSTONE
Local Authority: LOGAN CITY COUNCIL
Horizontal Meridian: MGA, Zone 56
Vertical Level Datum: AHD D
Scale: 1:250 @ A4
Designed: Peak Urban
Drawn: BK 11/03/2022
Checked: DE 11/03/2022
Plot Date: 11 Mar, 2022
Computer File Ref: 30109-St5B-DP-(A).dwg

DISCLOSURE PLAN
of Proposed LOT 2308
being part of
Lot 911
on SP321079



veris

BRISBANE (07) 3686 4700 WHITSUNDAYS (07) 4945 6600

MACKAY (07) 4957 9700 CAIRNS (07) 4252 9400

veris.com.au
ACN 615 735 727
Veris Australia Pty Ltd

Drawing No
30109-DP- 2308

Issue
A

LEGEND

Final surface contours based on A.H.D. datum at an interval of 0.5m, shown as: 15.5

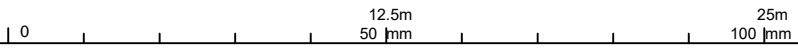
Where applicable, areas to be filled are shown as:

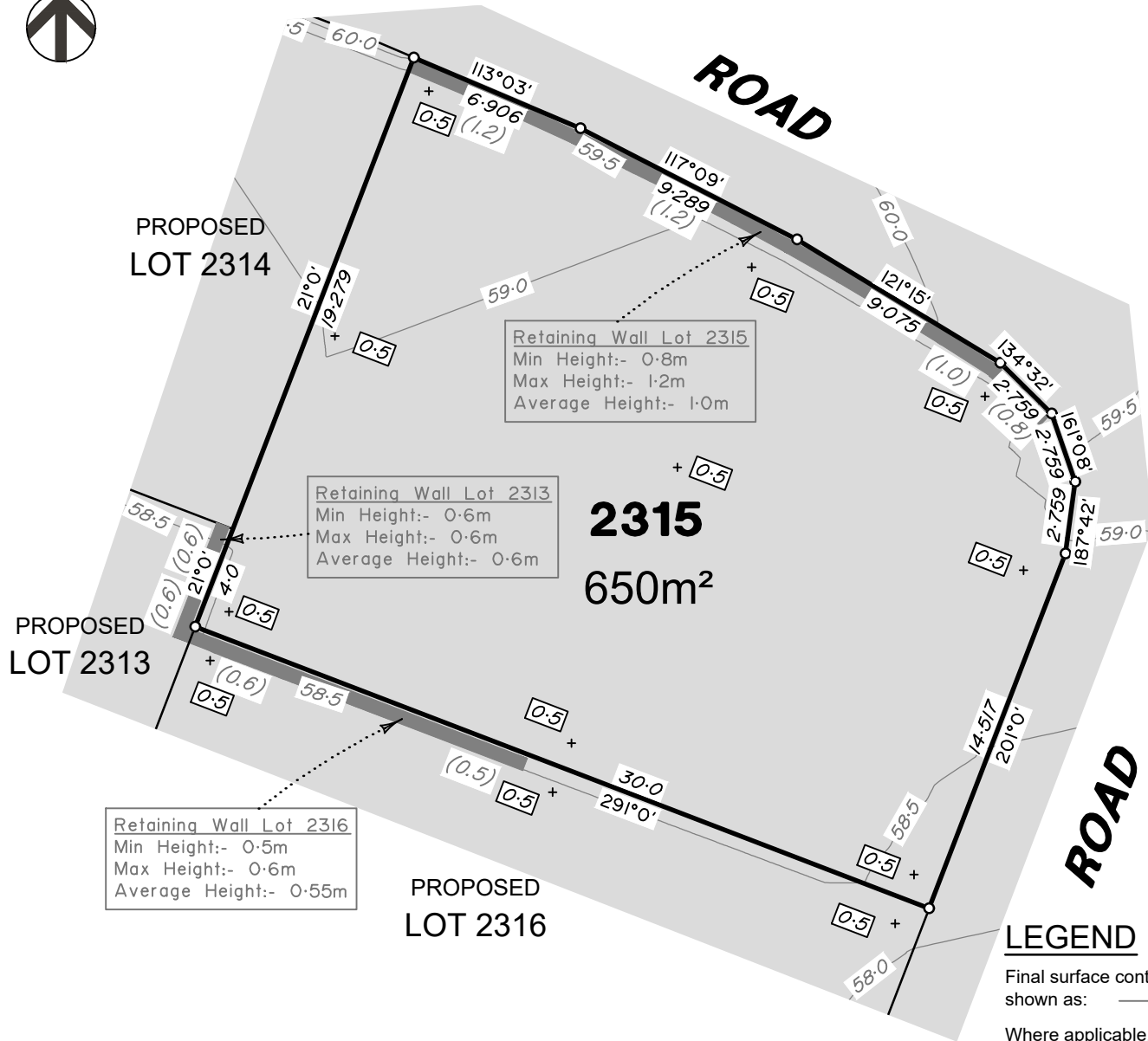
Depth of fill, in metres, shown as:- + 0.5

Retaining wall and retaining wall height, shown on the lower side of the wall, have been taken from plans supplied by Peak Urban and shown as:

Bin Pad Location shown as:

150 mm SCALE BAR





ADDITIONAL NOTES:

The LOT dimensions and area shown hereon are subject to final field survey and also to the requirements of Council and any other authority which may have requirements under any relevant legislation

Final surface contours shown hereon have been supplied by Peak Urban.

Location of retaining walls are as shown on Engineering design drawings. Their as-constructed location may differ from their design location. Retaining wall heights have been supplied by Peak Urban. **The engineering detail shown hereon are preliminary only and are subject to change in final design and statutory approvals**

Compaction of any fill material placed on this site shall be completed to level one inspection and testing services in accordance with AS3798-2007.

Depth of fill values are calculated to the pre-development surface.

Copyright © Veris Australia Pty Ltd
11/03/2022.

**FLAGSTONE
PRECINCT 1 STAGE 5B(i)**
For
**PEET FLAGSTONE
CITY PTY LTD**

IMPORTANT NOTES:
(These notes are an integral part of this plan)

This plan has been prepared for PEET FLAGSTONE CITY PTY LTD for the purposes of **A Disclosure Plan Under the Land Sales Act 1984 (as amended)**.

It is not to be used by any other person or corporation or for any other purposes and is subject to the following limitations:

Please refer to the approved Development Application for conditions relating to the LOT and to approved Operational Works drawings for services location and possible easements.

THESE DESIGNS AND DRAWINGS ARE COPYRIGHT AND ARE NOT TO BE USED OR REPRODUCED WITHOUT THE WRITTEN PERMISSION OF VERIS

Data Sources
Cadastral Boundaries
30109-LC-Master(CW) FS94 2014.dwg
Engineering Design
FLAGSTONE - BASE - STAGE 5A 5B - DISCLOSURE INFO - 27 01 2022.dwg
Final Surface Contours
FLAGSTONE - BASE - STAGE 5A 5B - DISCLOSURE INFO - 27 01 2022.dwg
Depth of Fill
FLAGSTONE - DEPTH RANGE CONTOURS - STAGE 5A 5B - DISCLOSURE INFO - 27 01 2022.dwg

Issue	Revisions	Date	Drawn
A	Original	11.03.2022	BK

Locality: FLAGSTONE
Local Authority: LOGAN CITY COUNCIL
Horizontal Meridian: MGA, Zone 56
Vertical Level Datum: AHD D
Scale: 1:250 @ A4
Designed: Peak Urban
Drawn: BK 11/03/2022
Checked: DE 11/03/2022
Plot Date: 11 Mar, 2022
Computer File Ref: 30109-St5Bi-DP-(A).dwg

**DISCLOSURE PLAN
of Proposed LOT 2315
being part of
Lot 911
on SP321079**



BRISBANE (07) 3666 4700 WHITSUNDAYS (07) 4945 6600

MACKAY (07) 4957 9700 CAIRNS (07) 4252 9400

veris.com.au
ACN 615 735 727
Veris Australia Pty Ltd

Drawing No 30109-DP- 2315 Issue A

LEGEND

Final surface contours based on A.H.D. datum at an interval of 0.5m, shown as: 15.5

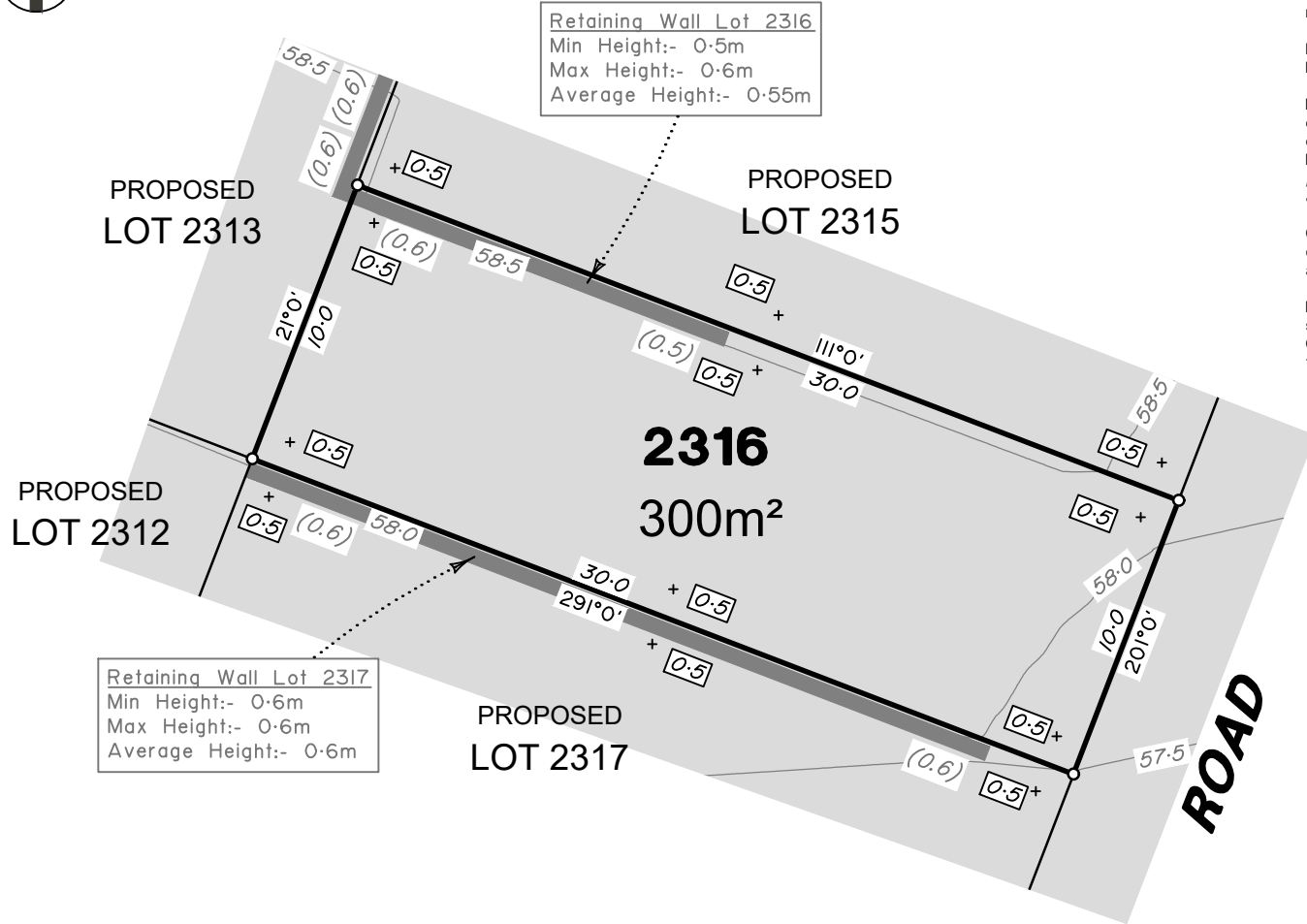
Where applicable, areas to be filled are shown as:

Depth of fill, in metres, shown as:- + 0.5

Retaining wall and retaining wall height, shown on the lower side of the wall, have been taken from plans supplied by Peak Urban and shown as:

Bin Pad Location shown as:

12.5m 25m 37.5m 100 mm 150 mm SCALE BAR



Retaining Wall Lot 2316
 Min Height:- 0.5m
 Max Height:- 0.6m
 Average Height:- 0.55m

PROPOSED LOT 2313

PROPOSED LOT 2315

2316
 300m²

PROPOSED LOT 2312

Retaining Wall Lot 2317
 Min Height:- 0.6m
 Max Height:- 0.6m
 Average Height:- 0.6m

PROPOSED LOT 2317

ROAD

ADDITIONAL NOTES:

The LOT dimensions and area shown hereon are subject to final field survey and also to the requirements of Council and any other authority which may have requirements under any relevant legislation

Final surface contours shown hereon have been supplied by Peak Urban.

Location of retaining walls are as shown on Engineering design drawings. Their as-constructed location may differ from their design location. Retaining wall heights have been supplied by Peak Urban. **The engineering detail shown hereon are preliminary only and are subject to change in final design and statutory approvals**

Compaction of any fill material placed on this site shall be completed to level one inspection and testing services in accordance with AS3798-2007.

Depth of fill values are calculated to the pre-development surface.

Copyright © Veris Australia Pty Ltd
 11/03/2022.

FLAGSTONE PRECINCT 1 STAGE 5B(i)
 For
PEET FLAGSTONE CITY PTY LTD

IMPORTANT NOTES:
 (These notes are an integral part of this plan)

This plan has been prepared for PEET FLAGSTONE CITY PTY LTD for the purposes of **A Disclosure Plan Under the Land Sales Act 1984 (as amended)**.

It is not to be used by any other person or corporation or for any other purposes and is subject to the following limitations:

Please refer to the approved Development Application for conditions relating to the LOT and to approved Operational Works drawings for services location and possible easements.

THESE DESIGNS AND DRAWINGS ARE COPYRIGHT AND ARE NOT TO BE USED OR REPRODUCED WITHOUT THE WRITTEN PERMISSION OF VERIS

Data Sources
 Cadastral Boundaries
 30109-LC-Master(CW) FS94 2014.dwg
 Engineering Design
 FLAGSTONE - BASE - STAGE 5A 5B - DISCLOSURE INFO - 27 01 2022.dwg
 Final Surface Contours
 FLAGSTONE - BASE - STAGE 5A 5B - DISCLOSURE INFO - 27 01 2022.dwg
 Depth of Fill
 FLAGSTONE - DEPTH RANGE CONTOURS - STAGE 5A 5B - DISCLOSURE INFO - 27 01 2022.dwg

Issue	Revisions	Date	Drawn
A	Original	11.03.2022	BK

Locality: FLAGSTONE
 Local Authority: LOGAN CITY COUNCIL
 Horizontal Meridian: MGA, Zone 56
 Vertical Level Datum: AHD D
 Scale: 1:250 @ A4
 Designed: Peak Urban
 Drawn: BK 11/03/2022
 Checked: DE 11/03/2022
 Plot Date: 11 Mar, 2022
 Computer File Ref: 30109-St5B(i)-DP-(A).dwg

DISCLOSURE PLAN
 of Proposed LOT 2316
 being part of
 Lot 911
 on SP321079



BRISBANE (07) 3686 4700 WHITSUNDAYS (07) 4945 6600
 MACKAY (07) 4957 9700 CAIRNS (07) 4252 9400

veris.com.au
 ACN 615 735 727
 Veris Australia Pty Ltd

Drawing No 30109-DP- 2316 Issue A

LEGEND

Final surface contours based on A.H.D. datum at an interval of 0.5m, shown as: — 15.5 —

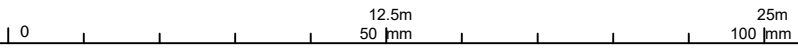
Where applicable, areas to be filled are shown as:

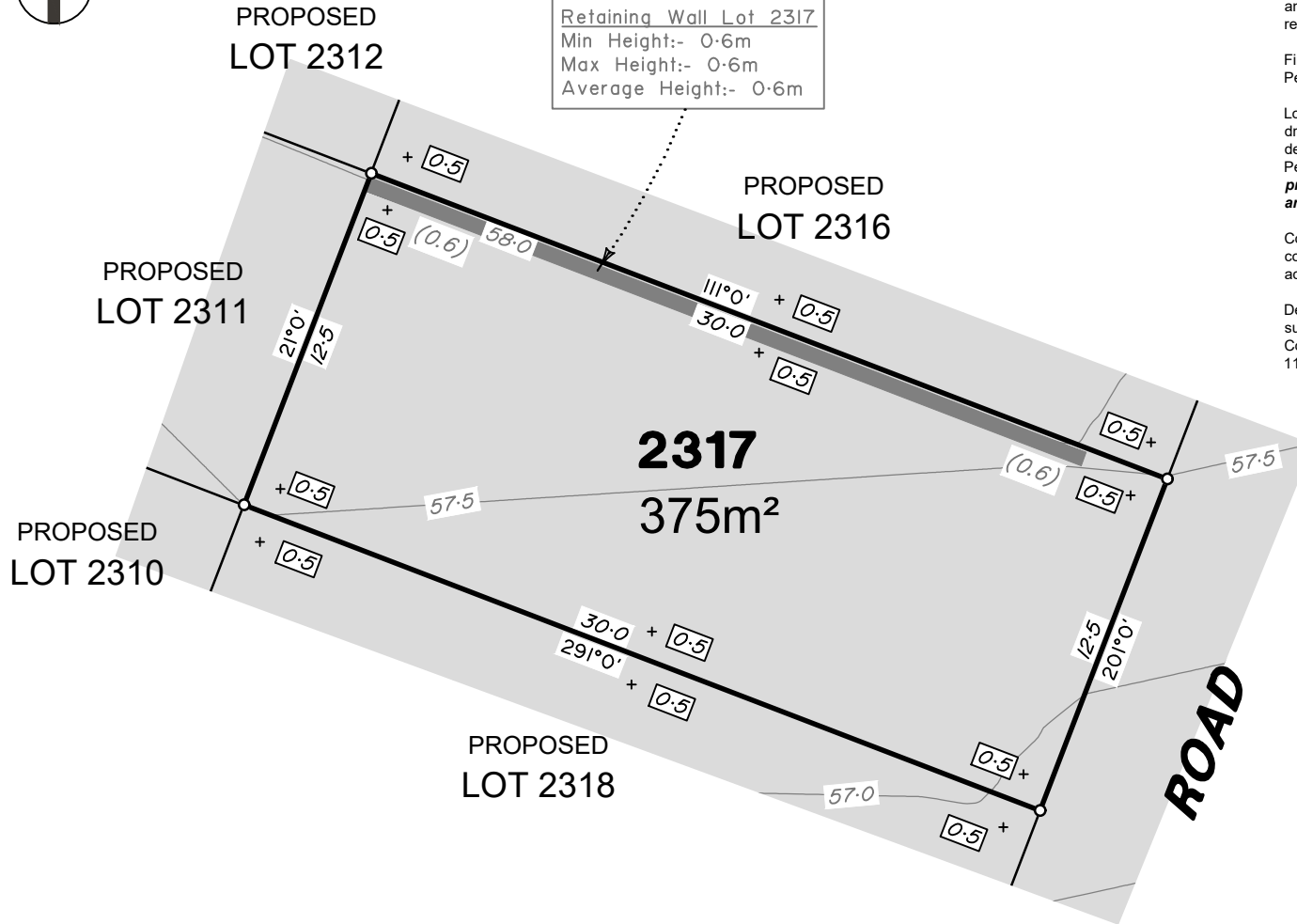
Depth of fill, in metres, shown as:- +0.5

Retaining wall and retaining wall height, shown on the lower side of the wall, have been taken from plans supplied by Peak Urban and shown as:

Bin Pad Location shown as: *

150 mm SCALE BAR





Retaining Wall Lot 2317
 Min Height:- 0.6m
 Max Height:- 0.6m
 Average Height:- 0.6m

ADDITIONAL NOTES:

The LOT dimensions and area shown hereon are subject to final field survey and also to the requirements of Council and any other authority which may have requirements under any relevant legislation

Final surface contours shown hereon have been supplied by Peak Urban.

Location of retaining walls are as shown on Engineering design drawings. Their as-constructed location may differ from their design location. Retaining wall heights have been supplied by Peak Urban. **The engineering detail shown hereon are preliminary only and are subject to change in final design and statutory approvals**

Compaction of any fill material placed on this site shall be completed to level one inspection and testing services in accordance with AS3798-2007.

Depth of fill values are calculated to the pre-development surface.

Copyright © Veris Australia Pty Ltd
 11/03/2022.

**FLAGSTONE
 PRECINCT 1 STAGE 5B(i)**

For
**PEET FLAGSTONE
 CITY PTY LTD**

IMPORTANT NOTES:
 (These notes are an integral part of this plan)

This plan has been prepared for PEET FLAGSTONE CITY PTY LTD for the purposes of a Disclosure Plan Under the Land Sales Act 1984 (as amended).

It is not to be used by any other person or corporation or for any other purposes and is subject to the following limitations:

Please refer to the approved Development Application for conditions relating to the LOT and to approved Operational Works drawings for services location and possible easements.

THESE DESIGNS AND DRAWINGS ARE COPYRIGHT AND ARE NOT TO BE USED OR REPRODUCED WITHOUT THE WRITTEN PERMISSION OF VERIS

Data Sources
 Cadastral Boundaries
 30109-LC-Master(CW) FS94 2014.dwg
 Engineering Design
 FLAGSTONE - BASE - STAGE 5A 5B - DISCLOSURE INFO - 27 01 2022.dwg
 Final Surface Contours
 FLAGSTONE - BASE - STAGE 5A 5B - DISCLOSURE INFO - 27 01 2022.dwg
 Depth of Fill
 FLAGSTONE - DEPTH RANGE CONTOURS - STAGE 5A 5B - DISCLOSURE INFO - 27 01 2022.dwg

Issue	Revisions	Date	Drawn
A	Original	11.03.2022	BK

Locality: FLAGSTONE
 Local Authority: LOGAN CITY COUNCIL
 Horizontal Meridian: MGA, Zone 56
 Vertical Level Datum: AHD D
 Scale: 1:250 @ A4
 Designed: Peak Urban
 Drawn: BK 11/03/2022
 Checked: DE 11/03/2022
 Plot Date: 11 Mar, 2022
 Computer File Ref: 30109-St5Bi-DP-(A).dwg

**DISCLOSURE PLAN
 of Proposed LOT 2317**

being part of
 Lot 911
 on SP321079



BRISBANE WHITSUNDAYS
 (07) 3666 4700 (07) 4945 6600

MACKAY CAIRNS
 (07) 4957 9700 (07) 4252 9400

veris.com.au
 ACN 615 735 727
 Veris Australia Pty Ltd

Drawing No Issue
30109-DP- 2317 A

LEGEND

Final surface contours based on A.H.D. datum at an interval of 0.5m, shown as: — 15.5 —

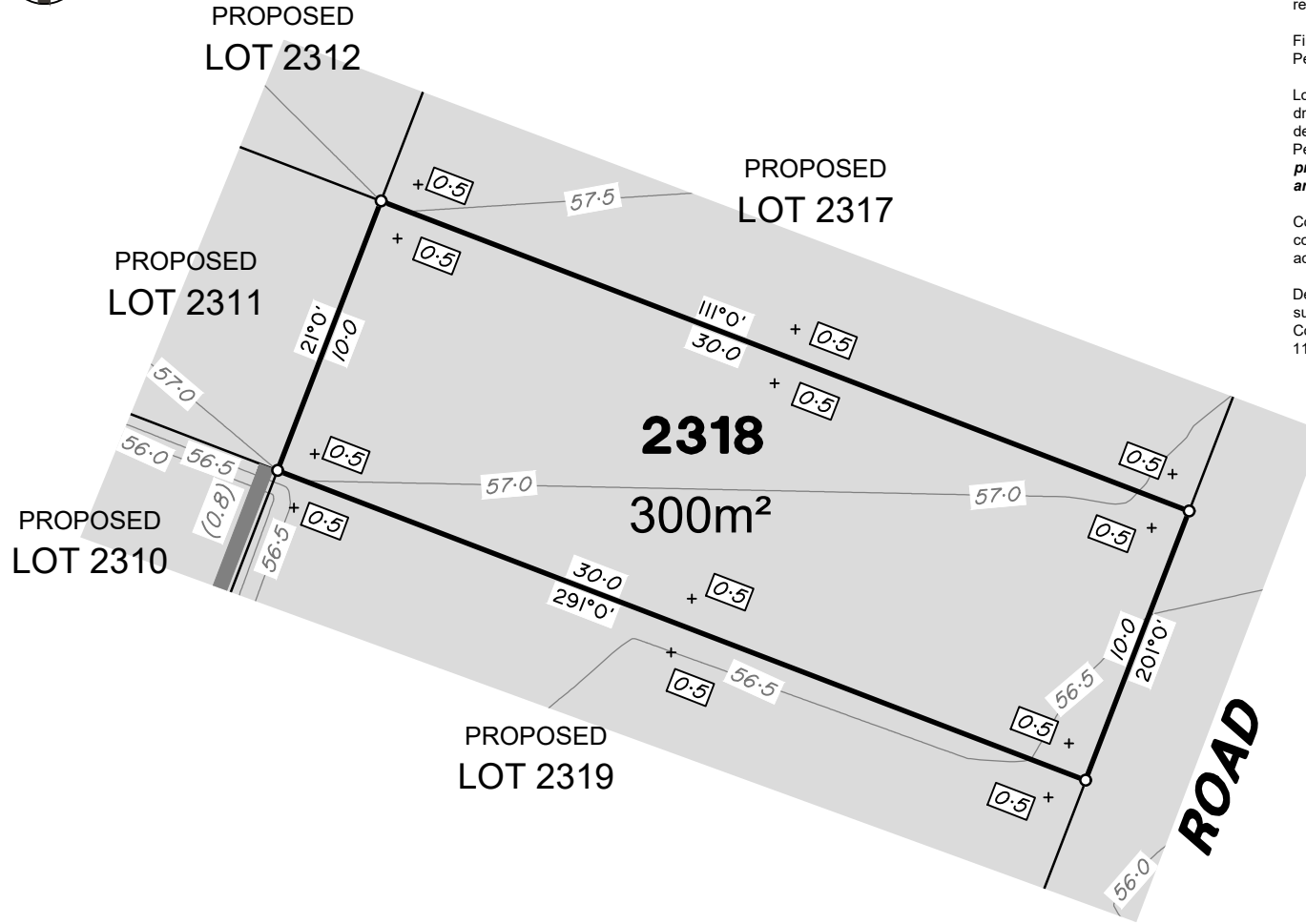
Where applicable, areas to be filled are shown as:

Depth of fill, in metres, shown as:- +0.5

Retaining wall and retaining wall height, shown on the lower side of the wall, have been taken from plans supplied by Peak Urban and shown as:

Bin Pad Location shown as: *





ADDITIONAL NOTES:

The LOT dimensions and area shown hereon are subject to final field survey and also to the requirements of Council and any other authority which may have requirements under any relevant legislation

Final surface contours shown hereon have been supplied by Peak Urban.

Location of retaining walls are as shown on Engineering design drawings. Their as-constructed location may differ from their design location. Retaining wall heights have been supplied by Peak Urban. **The engineering detail shown hereon are preliminary only and are subject to change in final design and statutory approvals**

Compaction of any fill material placed on this site shall be completed to level one inspection and testing services in accordance with AS3798-2007.

Depth of fill values are calculated to the pre-development surface.

Copyright © Veris Australia Pty Ltd
11/03/2022.

**FLAGSTONE
PRECINCT 1 STAGE 5B(i)**
For
**PEET FLAGSTONE
CITY PTY LTD**

IMPORTANT NOTES:
(These notes are an integral part of this plan)

This plan has been prepared for **PEET FLAGSTONE CITY PTY LTD** for the purposes of **A Disclosure Plan Under the Land Sales Act 1984 (as amended)**.

It is not to be used by any other person or corporation or for any other purposes and is subject to the following limitations:

Please refer to the approved Development Application for conditions relating to the LOT and to approved Operational Works drawings for services location and possible easements.

THESE DESIGNS AND DRAWINGS ARE COPYRIGHT AND ARE NOT TO BE USED OR REPRODUCED WITHOUT THE WRITTEN PERMISSION OF VERIS

Data Sources
Cadastral Boundaries
30109-LC-Master(CW) FS94 2014.dwg
Engineering Design
FLAGSTONE - BASE - STAGE 5A 5B - DISCLOSURE INFO - 27 01 2022.dwg
Final Surface Contours
FLAGSTONE - BASE - STAGE 5A 5B - DISCLOSURE INFO - 27 01 2022.dwg
Depth of Fill
FLAGSTONE - DEPTH RANGE CONTOURS - STAGE 5A 5B - DISCLOSURE INFO - 27 01 2022.dwg

Issue	Revisions	Date	Drawn
A	Original	11.03.2022	BK

Locality: FLAGSTONE
Local Authority: LOGAN CITY COUNCIL
Horizontal Meridian: MGA, Zone 56
Vertical Level Datum: AHD D
Scale: 1:250 @ A4
Designed: Peak Urban
Drawn: BK 11/03/2022
Checked: DE 11/03/2022
Plot Date: 11 Mar, 2022
Computer File Ref: 30109-St5Bi-DP-(A).dwg

**DISCLOSURE PLAN
of Proposed LOT 2318**
being part of
Lot 911
on SP321079



BRISBANE (07) 3686 4700 WHITSUNDAYS (07) 4945 6600

MACKAY (07) 4957 9700 CAIRNS (07) 4252 9400

veris.com.au
ACN 615 735 727
Veris Australia Pty Ltd

Drawing No 30109-DP- 2318 Issue A

LEGEND

Final surface contours based on A.H.D. datum at an interval of 0.5m, shown as: 15.5

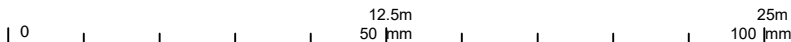
Where applicable, areas to be filled are shown as:

Depth of fill, in metres, shown as:- + 0.5

Retaining wall and retaining wall height, shown on the lower side of the wall, have been taken from plans supplied by Peak Urban and shown as: (1.2)

Bin Pad Location shown as:

150 mm SCALE BAR





PROPOSED LOT 2311

PROPOSED LOT 2318

PROPOSED LOT 2310

2319
611m²
+ 0.5

PROPOSED LOT 2309

PROPOSED LOT 2308

Retaining Wall Lot 2310
Min Height:- 0.8m
Max Height:- 0.9m
Average Height:- 0.85m

Retaining Wall Lot 2309
Min Height:- 2.4m
Max Height:- 2.5m
Average Height:- 2.45m

Retaining Wall Lot 2308
Min Height:- 1.0m
Max Height:- 2.6m
Average Height:- 1.8m

ADDITIONAL NOTES:

The LOT dimensions and area shown hereon are subject to final field survey and also to the requirements of Council and any other authority which may have requirements under any relevant legislation

Final surface contours shown hereon have been supplied by Peak Urban.

Location of retaining walls are as shown on Engineering design drawings. Their as-constructed location may differ from their design location. Retaining wall heights have been supplied by Peak Urban. **The engineering detail shown hereon are preliminary only and are subject to change in final design and statutory approvals**

Compaction of any fill material placed on this site shall be completed to level one inspection and testing services in accordance with AS3798-2007.

Depth of fill values are calculated to the pre-development surface.
Copyright © Veris Australia Pty Ltd
11/03/2022.

FLAGSTONE
PRECINCT 1 STAGE 5B(i)
For
PEET FLAGSTONE
CITY PTY LTD

IMPORTANT NOTES:
(These notes are an integral part of this plan)

This plan has been prepared for PEET FLAGSTONE CITY PTY LTD for the purposes of a Disclosure Plan Under the Land Sales Act 1984 (as amended).

It is not to be used by any other person or corporation or for any other purposes and is subject to the following limitations:

Please refer to the approved Development Application for conditions relating to the LOT and to approved Operational Works drawings for services location and possible easements.

THESE DESIGNS AND DRAWINGS ARE COPYRIGHT AND ARE NOT TO BE USED OR REPRODUCED WITHOUT THE WRITTEN PERMISSION OF VERIS

Data Sources
Cadastral Boundaries
30109-LC-Master(CW) FS94 2014.dwg
Engineering Design
FLAGSTONE - BASE - STAGE 5A 5B - DISCLOSURE INFO - 27 01 2022.dwg
Final Surface Contours
FLAGSTONE - BASE - STAGE 5A 5B - DISCLOSURE INFO - 27 01 2022.dwg
Depth of Fill
FLAGSTONE - DEPTH RANGE CONTOURS - STAGE 5A 5B - DISCLOSURE INFO - 27 01 2022.dwg

Issue	Revisions	Date	BK	Drawn
A	Original	11.03.2022		

Locality: FLAGSTONE
Local Authority: LOGAN CITY COUNCIL
Horizontal Meridian: MGA, Zone 56
Vertical Level Datum: AHD D
Scale: 1:250 @ A4
Designed: Peak Urban
Drawn: BK 11/03/2022
Checked: DE 11/03/2022
Plot Date: 11 Mar, 2022
Computer File Ref: 30109-St5B-DP-(A).dwg

DISCLOSURE PLAN
of Proposed LOT 2319
being part of
Lot 911
on SP321079



veris

BRISBANE (07) 3668 4700 WHITSUNDAYS (07) 4945 6600

MACKAY (07) 4957 9700 CAIRNS (07) 4252 9400

veris.com.au
ACN 615 735 727
Veris Australia Pty Ltd

Drawing No 30109-DP- 2319 Issue A

LEGEND

Final surface contours based on A.H.D. datum at an interval of 0.5m, shown as: — 15.5 —

Where applicable, areas to be filled are shown as:

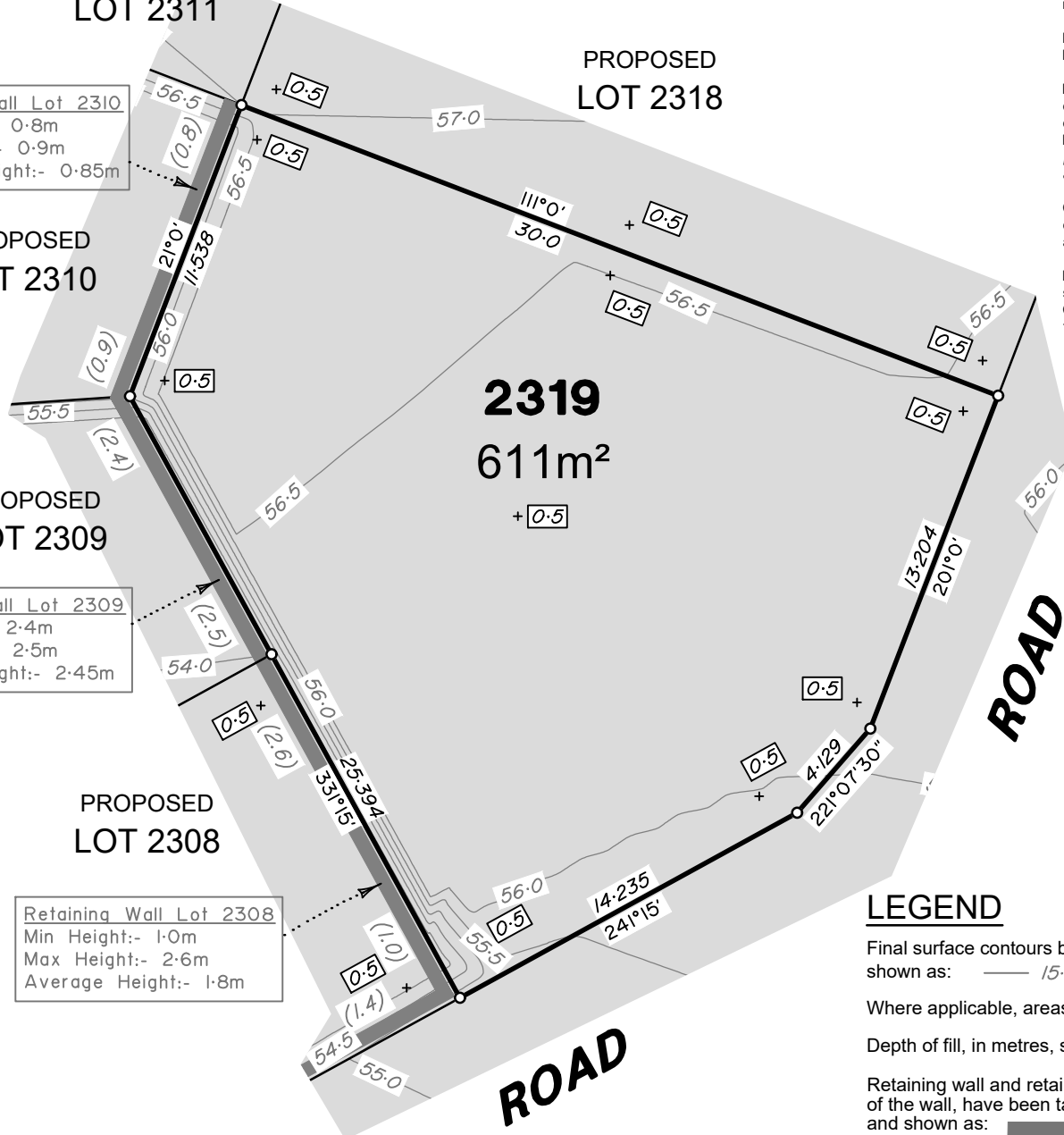
Depth of fill, in metres, shown as:- + 0.5

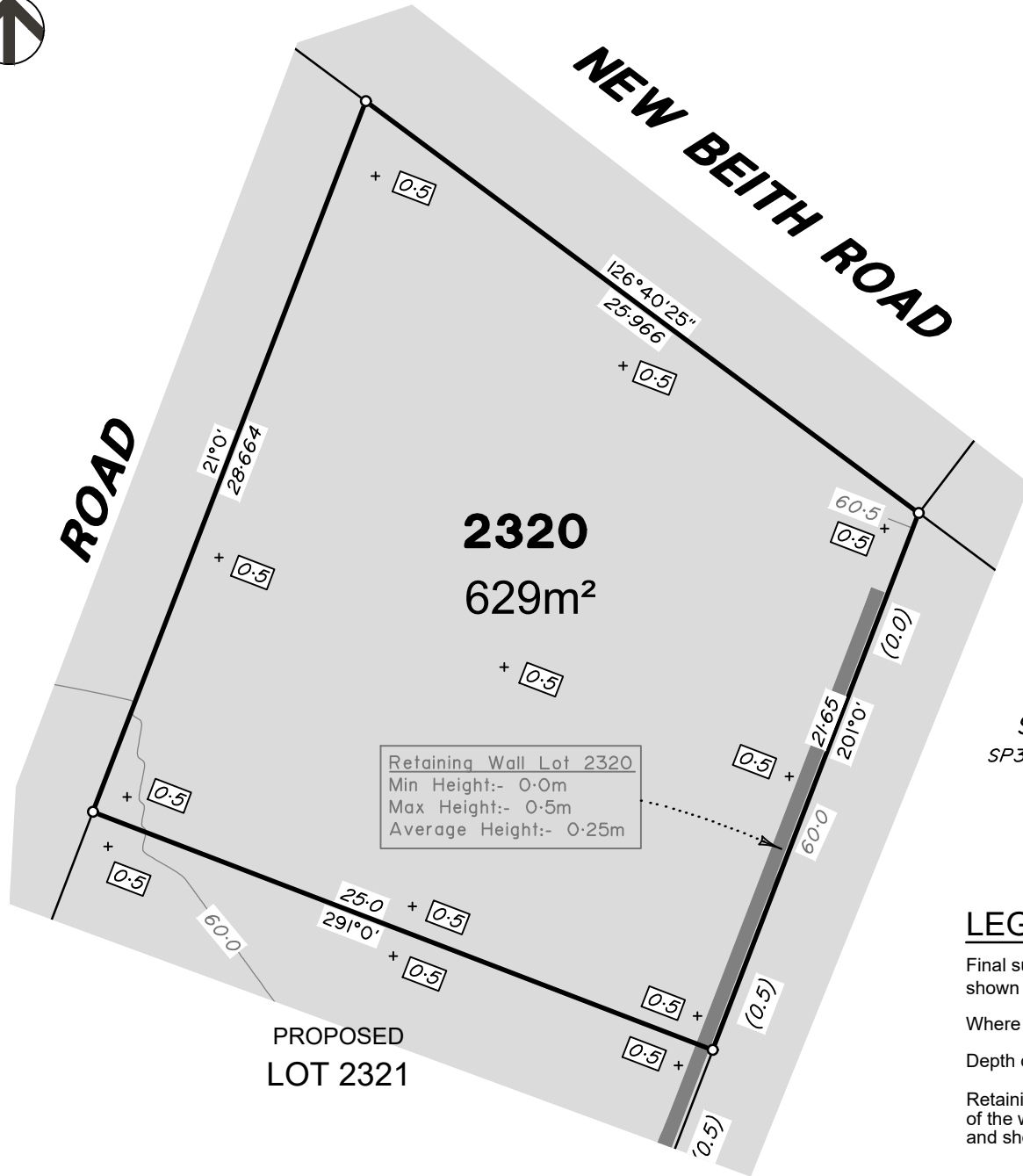
Retaining wall and retaining wall height, shown on the lower side of the wall, have been taken from plans supplied by Peak Urban and shown as:

Bin Pad Location shown as: *

37.5m
150 mm SCALE BAR

0 12.5m 50 mm 25m 100 mm





ADDITIONAL NOTES:

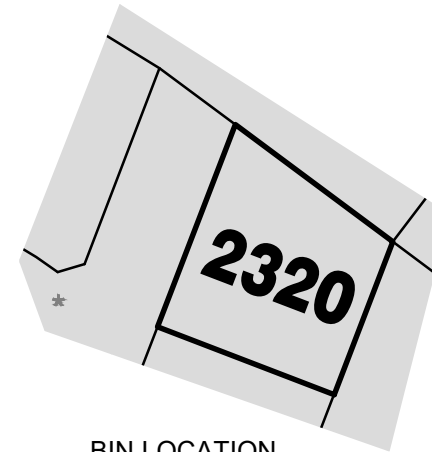
The LOT dimensions and area shown hereon are subject to final field survey and also to the requirements of Council and any other authority which may have requirements under any relevant legislation

Final surface contours shown hereon have been supplied by Peak Urban.

Location of retaining walls are as shown on Engineering design drawings. Their as-constructed location may differ from their design location. Retaining wall heights have been supplied by Peak Urban. *The engineering detail shown hereon are preliminary only and are subject to change in final design and statutory approvals*

Compaction of any fill material placed on this site shall be completed to level one inspection and testing services in accordance with AS3798-2007.

Depth of fill values are calculated to the pre-development surface.
Copyright © Veris Australia Pty Ltd
11/03/2022.



LEGEND

Final surface contours based on A.H.D. datum at an interval of 0.5m, shown as: — 15.5 —

Where applicable, areas to be filled are shown as:

Depth of fill, in metres, shown as:- +0.5

Retaining wall and retaining wall height, shown on the lower side of the wall, have been taken from plans supplied by Peak Urban and shown as:

Bin Pad Location shown as: *

**FLAGSTONE
PRECINCT 1 STAGE 5B(i)**
For
**PEET FLAGSTONE
CITY PTY LTD**

IMPORTANT NOTES:
(These notes are an integral part of this plan)

This plan has been prepared for PEET FLAGSTONE CITY PTY LTD for the purposes of a Disclosure Plan Under the Land Sales Act 1984 (as amended).

It is not to be used by any other person or corporation or for any other purposes and is subject to the following limitations:

Please refer to the approved Development Application for conditions relating to the LOT and to approved Operational Works drawings for services location and possible easements.

THESE DESIGNS AND DRAWINGS ARE COPYRIGHT AND ARE NOT TO BE USED OR REPRODUCED WITHOUT THE WRITTEN PERMISSION OF VERIS

Data Sources
Cadastral Boundaries
30109-LC-Master(CW) FS94 2014.dwg
Engineering Design
FLAGSTONE - BASE - STAGE 5A 5B - DISCLOSURE INFO - 27 01 2022.dwg
Final Surface Contours
FLAGSTONE - BASE - STAGE 5A 5B - DISCLOSURE INFO - 27 01 2022.dwg
Depth of Fill
FLAGSTONE - DEPTH RANGE CONTOURS - STAGE 5A 5B - DISCLOSURE INFO - 27 01 2022.dwg

Issue	Revisions	Date	BK	Drawn
A	Original	11.03.2022		BK

Locality: FLAGSTONE
Local Authority: LOGAN CITY COUNCIL
Horizontal Meridian: MGA, Zone 56
Vertical Level Datum: AHD D
Scale: 1:250 @ A4
Designed: Peak Urban
Drawn: BK 11/03/2022
Checked: DE 11/03/2022
Plot Date: 11 Mar, 2022
Computer File Ref: 30109-St5B-DP-(A).dwg

**DISCLOSURE PLAN
of Proposed LOT 2320**
being part of
Lot 911
on SP321079



BRISBANE (07) 3686 4700 WHITSUNDAYS (07) 4945 6600

MACKAY (07) 4957 9700 CAIRNS (07) 4252 9400

veris.com.au
ACN 615 735 727
Veris Australia Pty Ltd

Drawing No 30109-DP- 2320 Issue A





ADDITIONAL NOTES:

The LOT dimensions and area shown hereon are subject to final field survey and also to the requirements of Council and any other authority which may have requirements under any relevant legislation

Final surface contours shown hereon have been supplied by Peak Urban.

Location of retaining walls are as shown on Engineering design drawings. Their as-constructed location may differ from their design location. Retaining wall heights have been supplied by Peak Urban. **The engineering detail shown hereon are preliminary only and are subject to change in final design and statutory approvals**

Compaction of any fill material placed on this site shall be completed to level one inspection and testing services in accordance with AS3798-2007.

Depth of fill values are calculated to the pre-development surface.

Copyright © Veris Australia Pty Ltd
11/03/2022.

**FLAGSTONE
PRECINCT 1 STAGE 5B(i)**

For
**PEET FLAGSTONE
CITY PTY LTD**

IMPORTANT NOTES:
(These notes are an integral part of this plan)

This plan has been prepared for **PEET FLAGSTONE CITY PTY LTD** for the purposes of a **Disclosure Plan Under the Land Sales Act 1984 (as amended)**.

It is not to be used by any other person or corporation or for any other purposes and is subject to the following limitations:

Please refer to the approved Development Application for conditions relating to the LOT and to approved Operational Works drawings for services location and possible easements.

THESE DESIGNS AND DRAWINGS ARE COPYRIGHT AND ARE NOT TO BE USED OR REPRODUCED WITHOUT THE WRITTEN PERMISSION OF VERIS

Data Sources
Cadastral Boundaries
30109-LC-Master(CW) FS94 2014.dwg
Engineering Design
FLAGSTONE - BASE - STAGE 5A 5B - DISCLOSURE INFO - 27 01 2022.dwg
Final Surface Contours
FLAGSTONE - BASE - STAGE 5A 5B - DISCLOSURE INFO - 27 01 2022.dwg
Depth of Fill
FLAGSTONE - DEPTH RANGE CONTOURS - STAGE 5A 5B - DISCLOSURE INFO - 27 01 2022.dwg

Issue	Revisions	Date	BK	Drawn
A	Original	11.03.2022		BK

Locality: FLAGSTONE
Local Authority: LOGAN CITY COUNCIL
Horizontal Meridian: MGA, Zone 56
Vertical Level Datum: AHD D
Scale: 1:250 @ A4
Designed: Peak Urban
Drawn: BK 11/03/2022
Checked: DE 11/03/2022
Plot Date: 11 Mar, 2022
Computer File Ref: 30109-St5Bi-DP-(A).dwg

**DISCLOSURE PLAN
of Proposed LOT 2321**

being part of
Lot 911
on SP321079



veris

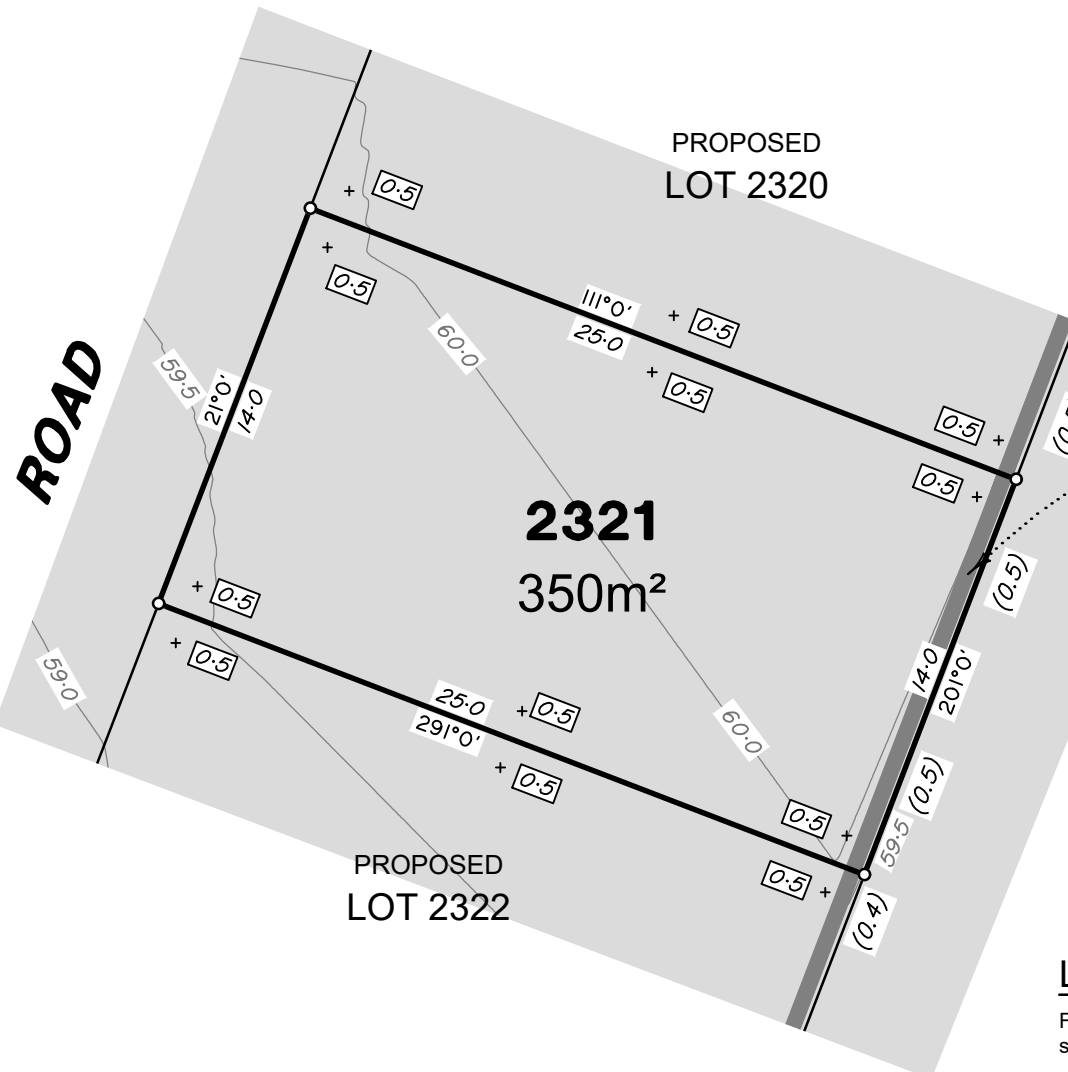
BRISBANE (07) 3666 4700 WHITSUNDAYS (07) 4945 6600

MACKAY (07) 4957 9700 CAIRNS (07) 4252 9400

veris.com.au
ACN 615 735 727
Veris Australia Pty Ltd

Drawing No
30109-DP- 2321

Issue
A



Retaining Wall Lot 2321
Min Height:- 0.5m
Max Height:- 0.5m
Average Height:- 0.5m



LEGEND

Final surface contours based on A.H.D. datum at an interval of 0.5m, shown as: 15.5

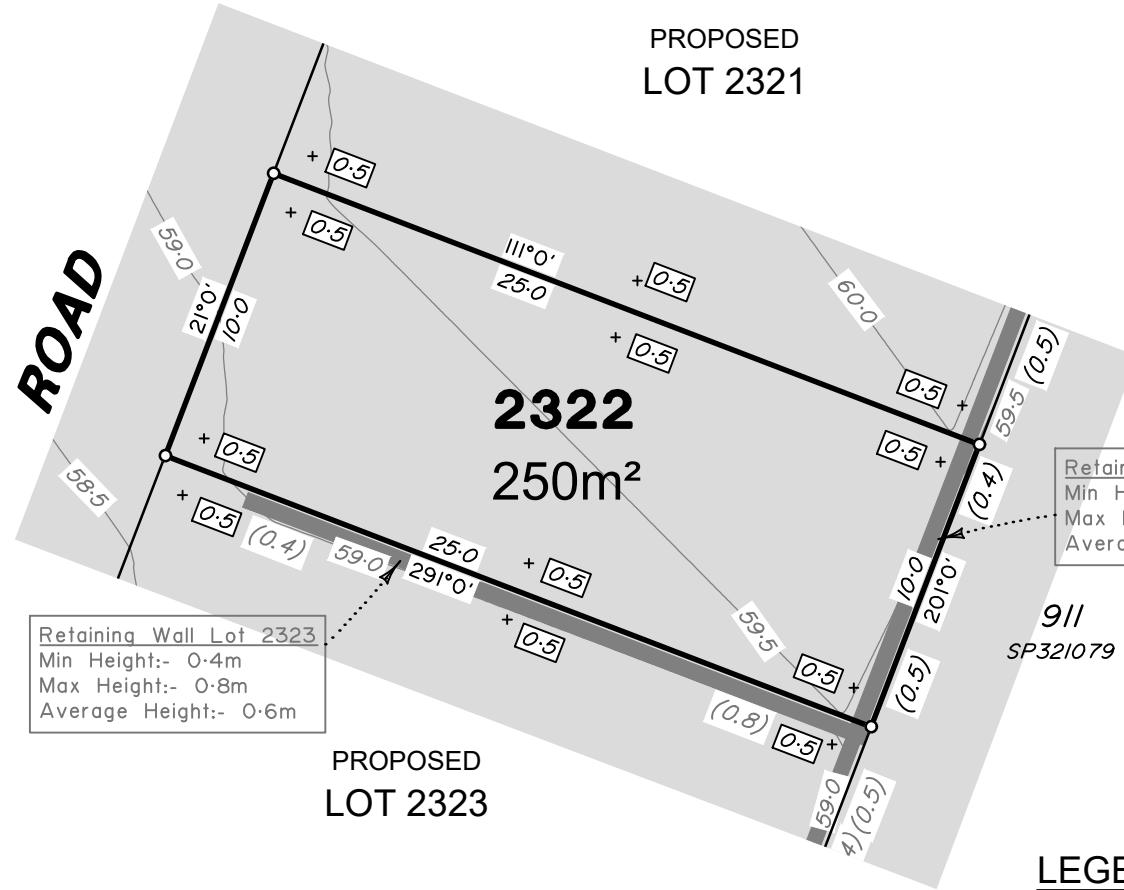
Where applicable, areas to be filled are shown as:

Depth of fill, in metres, shown as:- 0.5

Retaining wall and retaining wall height, shown on the lower side of the wall, have been taken from plans supplied by Peak Urban and shown as: (1.2)

Bin Pad Location shown as:

12.5m 25m 37.5m
50 mm 100 mm 150 mm SCALE BAR



Retaining Wall Lot 2323
 Min Height:- 0.4m
 Max Height:- 0.8m
 Average Height:- 0.6m

Retaining Wall Lot 2322
 Min Height:- 0.4m
 Max Height:- 0.5m
 Average Height:- 0.45m

PROPOSED
 LOT 2321

PROPOSED
 LOT 2323

2322
 250m²

LEGEND

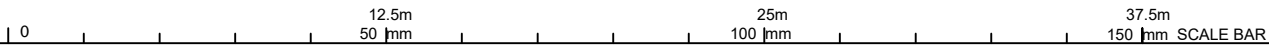
Final surface contours based on A.H.D. datum at an interval of 0.5m, shown as: — 15.5 —

Where applicable, areas to be filled are shown as:

Depth of fill, in metres, shown as:- +0.5

Retaining wall and retaining wall height, shown on the lower side of the wall, have been taken from plans supplied by Peak Urban and shown as:

Bin Pad Location shown as: *



ADDITIONAL NOTES:

The LOT dimensions and area shown hereon are subject to final field survey and also to the requirements of Council and any other authority which may have requirements under any relevant legislation

Final surface contours shown hereon have been supplied by Peak Urban.

Location of retaining walls are as shown on Engineering design drawings. Their as-constructed location may differ from their design location. Retaining wall heights have been supplied by Peak Urban. **The engineering detail shown hereon are preliminary only and are subject to change in final design and statutory approvals**

Compaction of any fill material placed on this site shall be completed to level one inspection and testing services in accordance with AS3798-2007.

Depth of fill values are calculated to the pre-development surface.
 Copyright © Veris Australia Pty Ltd
 11/03/2022.

FLAGSTONE
 PRECINCT 1 STAGE 5B(i)
 For
 PEET FLAGSTONE
 CITY PTY LTD

IMPORTANT NOTES:
 (These notes are an integral part of this plan)

This plan has been prepared for PEET FLAGSTONE CITY PTY LTD for the purposes of A Disclosure Plan Under the Land Sales Act 1984 (as amended).

It is not to be used by any other person or corporation or for any other purposes and is subject to the following limitations:

Please refer to the approved Development Application for conditions relating to the LOT and to approved Operational Works drawings for services location and possible easements.

THESE DESIGNS AND DRAWINGS ARE COPYRIGHT AND ARE NOT TO BE USED OR REPRODUCED WITHOUT THE WRITTEN PERMISSION OF VERIS

Data Sources

Cadastral Boundaries
 30109-LC-Master(CW) FS94 2014.dwg

Engineering Design
 FLAGSTONE - BASE - STAGE 5A 5B - DISCLOSURE INFO - 27 01 2022.dwg

Final Surface Contours
 FLAGSTONE - BASE - STAGE 5A 5B - DISCLOSURE INFO - 27 01 2022.dwg

Depth of Fill
 FLAGSTONE - DEPTH RANGE CONTOURS - STAGE 5A 5B - DISCLOSURE INFO - 27 01 2022.dwg

Issue	Revisions	Date	Drawn
A	Original	11.03.2022	BK

Locality:	FLAGSTONE
Local Authority:	LOGAN CITY COUNCIL
Horizontal Meridian:	MGA, Zone 56
Vertical Level Datum:	AHD D
Scale:	1:250 @ A4
Designed:	Peak Urban
Drawn:	BK 11/03/2022
Checked:	DE 11/03/2022
Plot Date:	11 Mar, 2022
Computer File Ref:	30109-St5Bi-DP-(A).dwg

DISCLOSURE PLAN
 of Proposed LOT 2322
 being part of
 Lot 911
 on SP321079



BRISBANE (07) 3666 4700 WHITSUNDAYS (07) 4945 6600
 MACKAY (07) 4957 9700 CAIRNS (07) 4252 9400
 veris.com.au
 ACN 615 735 727
 Veris Australia Pty Ltd

Drawing No
 30109-DP- 2322
 Issue
 A



**FLAGSTONE
PRECINCT 1 STAGE 5B(i)**
For
**PEET FLAGSTONE
CITY PTY LTD**

IMPORTANT NOTES:
(These notes are an integral part of this plan)

This plan has been prepared for PEET FLAGSTONE CITY PTY LTD for the purposes of a **Disclosure Plan Under the Land Sales Act 1984 (as amended)**.

It is not to be used by any other person or corporation or for any other purposes and is subject to the following limitations:

Please refer to the approved Development Application for conditions relating to the LOT and to approved Operational Works drawings for services location and possible easements.

THESE DESIGNS AND DRAWINGS ARE COPYRIGHT AND ARE NOT TO BE USED OR REPRODUCED WITHOUT THE WRITTEN PERMISSION OF VERIS

Data Sources
Cadastral Boundaries
30109-LC-Master(CW) FS94 2014.dwg
Engineering Design
FLAGSTONE - BASE - STAGE 5A 5B - DISCLOSURE INFO - 27 01 2022.dwg
Final Surface Contours
FLAGSTONE - BASE - STAGE 5A 5B - DISCLOSURE INFO - 27 01 2022.dwg
Depth of Fill
FLAGSTONE - DEPTH RANGE CONTOURS - STAGE 5A 5B - DISCLOSURE INFO - 27 01 2022.dwg

Issue	Revisions	Date	BK	Drawn
A	Original	11.03.2022	BK	

Locality: FLAGSTONE
Local Authority: LOGAN CITY COUNCIL
Horizontal Meridian: MGA, Zone 56
Vertical Level Datum: AHD D
Scale: 1:250 @ A4
Designed: Peak Urban
Drawn: BK 11/03/2022
Checked: DE 11/03/2022
Plot Date: 11 Mar, 2022
Computer File Ref: 30109-St5B-DP-(A).dwg

**DISCLOSURE PLAN
of Proposed LOT 2323**
being part of
Lot 911
on SP321079



BRISBANE (07) 3666 4700 WHITSUNDAYS (07) 4945 6600
MACKAY (07) 4957 9700 CAIRNS (07) 4252 9400
veris.com.au
ACN 615 735 727
Veris Australia Pty Ltd

Drawing No 30109-DP- 2323 Issue A

ADDITIONAL NOTES:

The LOT dimensions and area shown hereon are subject to final field survey and also to the requirements of Council and any other authority which may have requirements under any relevant legislation

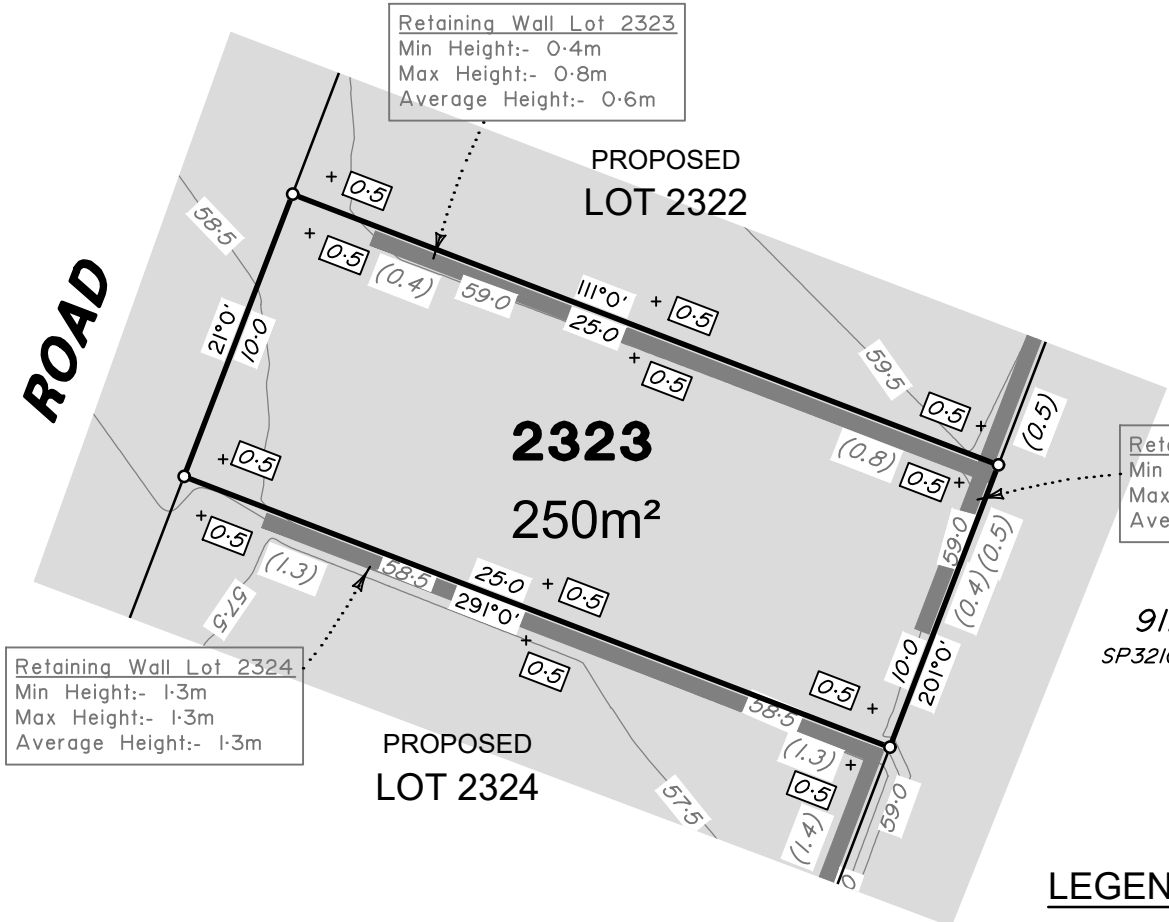
Final surface contours shown hereon have been supplied by Peak Urban.

Location of retaining walls are as shown on Engineering design drawings. Their as-constructed location may differ from their design location. Retaining wall heights have been supplied by Peak Urban. **The engineering detail shown hereon are preliminary only and are subject to change in final design and statutory approvals**

Compaction of any fill material placed on this site shall be completed to level one inspection and testing services in accordance with AS3798-2007.

Depth of fill values are calculated to the pre-development surface.

Copyright © Veris Australia Pty Ltd
11/03/2022.



Retaining Wall Lot 2323
Min Height:- 0.4m
Max Height:- 0.8m
Average Height:- 0.6m

Retaining Wall Lot 2323
Min Height:- 0.4m
Max Height:- 0.5m
Average Height:- 0.45m

Retaining Wall Lot 2324
Min Height:- 1.3m
Max Height:- 1.3m
Average Height:- 1.3m

LEGEND

Final surface contours based on A.H.D. datum at an interval of 0.5m, shown as: 15.5

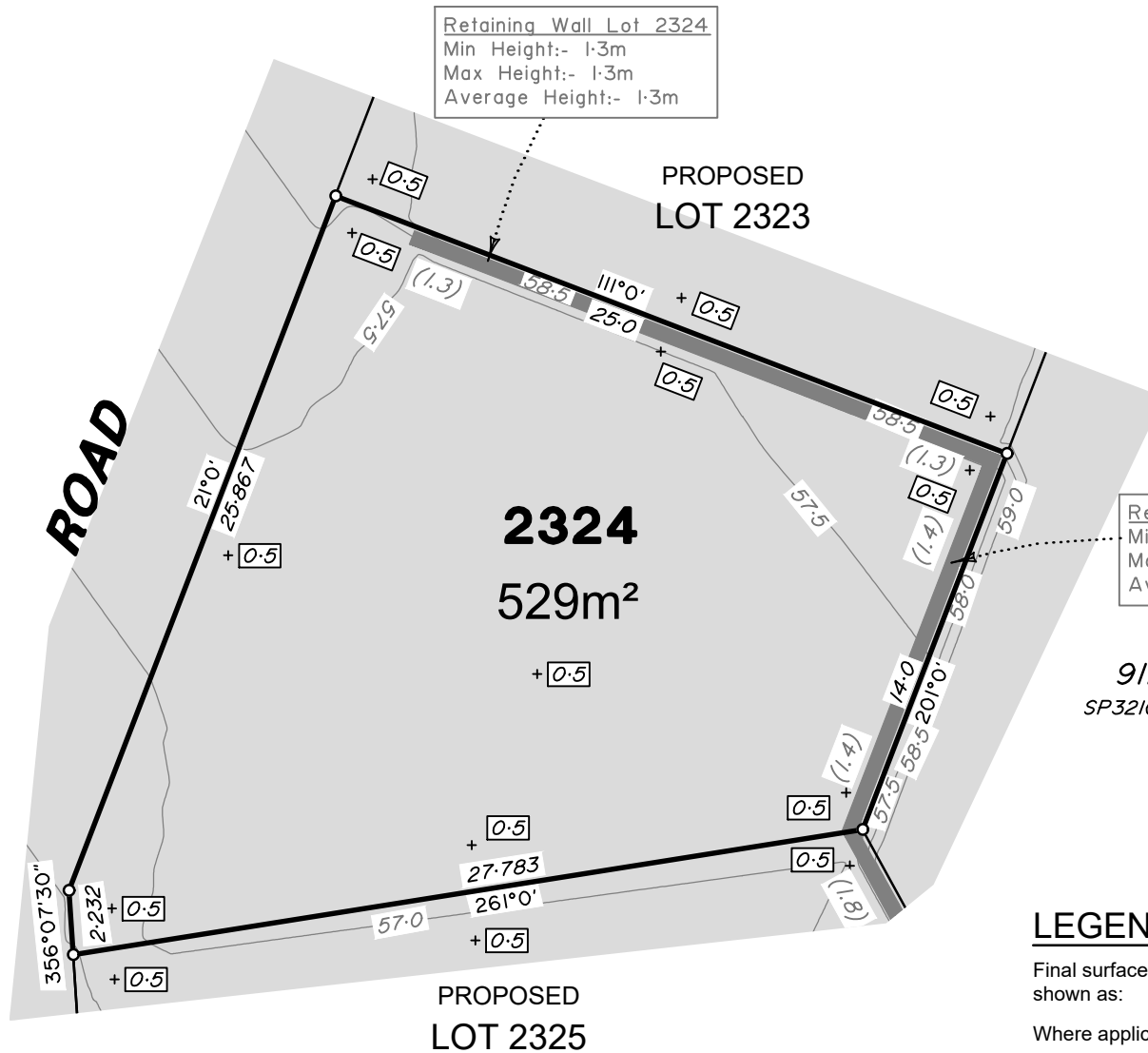
Where applicable, areas to be filled are shown as:

Depth of fill, in metres, shown as:- +0.5

Retaining wall and retaining wall height, shown on the lower side of the wall, have been taken from plans supplied by Peak Urban and shown as: (1.2)

Bin Pad Location shown as:

150 mm SCALE BAR



ADDITIONAL NOTES:

The LOT dimensions and area shown hereon are subject to final field survey and also to the requirements of Council and any other authority which may have requirements under any relevant legislation

Final surface contours shown hereon have been supplied by Peak Urban.

Location of retaining walls are as shown on Engineering design drawings. Their as-constructed location may differ from their design location. Retaining wall heights have been supplied by Peak Urban. *The engineering detail shown hereon are preliminary only and are subject to change in final design and statutory approvals*

Compaction of any fill material placed on this site shall be completed to level one inspection and testing services in accordance with AS3798-2007.

Depth of fill values are calculated to the pre-development surface.

Copyright © Veris Australia Pty Ltd
11/03/2022.

**FLAGSTONE
PRECINCT 1 STAGE 5B(i)**
For
**PEET FLAGSTONE
CITY PTY LTD**

IMPORTANT NOTES:
(These notes are an integral part of this plan)

This plan has been prepared for **PEET FLAGSTONE CITY PTY LTD** for the purposes of **A Disclosure Plan Under the Land Sales Act 1984 (as amended)**.

It is not to be used by any other person or corporation or for any other purposes and is subject to the following limitations:

Please refer to the approved Development Application for conditions relating to the LOT and to approved Operational Works drawings for services location and possible easements.

THESE DESIGNS AND DRAWINGS ARE COPYRIGHT AND ARE NOT TO BE USED OR REPRODUCED WITHOUT THE WRITTEN PERMISSION OF VERIS

Data Sources
Cadastral Boundaries
30109-LC-Master(CW) FS94 2014.dwg
Engineering Design
FLAGSTONE - BASE - STAGE 5A 5B - DISCLOSURE INFO - 27 01 2022.dwg
Final Surface Contours
FLAGSTONE - BASE - STAGE 5A 5B - DISCLOSURE INFO - 27 01 2022.dwg
Depth of Fill
FLAGSTONE - DEPTH RANGE CONTOURS - STAGE 5A 5B - DISCLOSURE INFO - 27 01 2022.dwg

Issue	Revisions	Date	BK	Drawn
A	Original	11.03.2022		

Locality: FLAGSTONE
Local Authority: LOGAN CITY COUNCIL
Horizontal Meridian: MGA, Zone 56
Vertical Level Datum: AHD D
Scale: 1:250 @ A4
Designed: Peak Urban
Drawn: BK 11/03/2022
Checked: DE 11/03/2022
Plot Date: 11 Mar, 2022
Computer File Ref: 30109-St5B(i)-DP-(A).dwg

**DISCLOSURE PLAN
of Proposed LOT 2324**
being part of
Lot 911
on SP321079



BRISBANE (07) 3668 4700 WHITSUNDAYS (07) 4945 6600

MACKAY (07) 4957 9700 CAIRNS (07) 4252 9400

veris.com.au
ACN 615 735 727
Veris Australia Pty Ltd

Drawing No
30109-DP- 2324

Issue
A

LEGEND

Final surface contours based on A.H.D. datum at an interval of 0.5m, shown as: 15.5

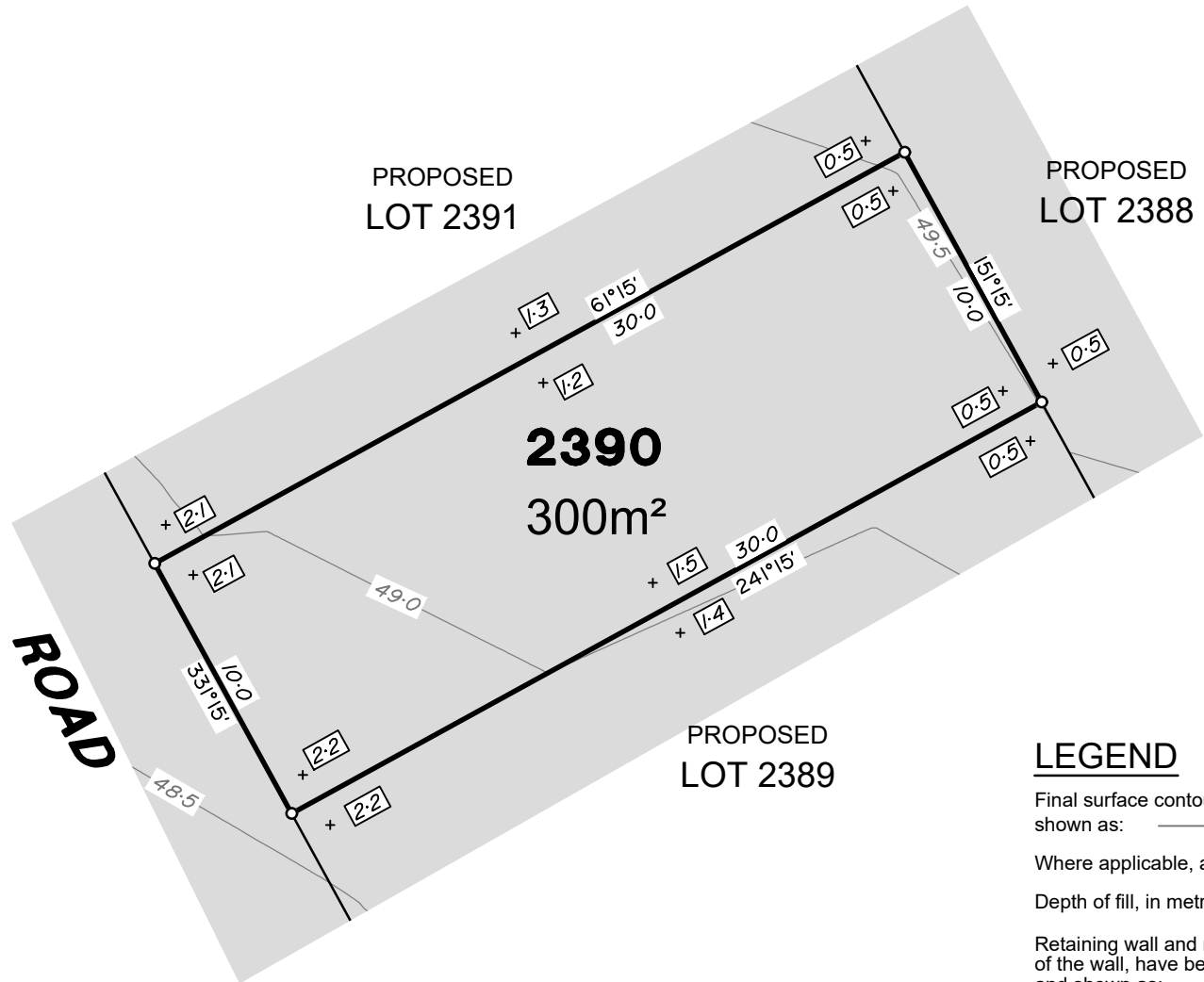
Where applicable, areas to be filled are shown as:

Depth of fill, in metres, shown as:- +0.5

Retaining wall and retaining wall height, shown on the lower side of the wall, have been taken from plans supplied by Peak Urban and shown as: (1.2)

Bin Pad Location shown as:

0 12.5m 25m 37.5m 150 mm SCALE BAR



ADDITIONAL NOTES:

The LOT dimensions and area shown hereon are subject to final field survey and also to the requirements of Council and any other authority which may have requirements under any relevant legislation

Final surface contours shown hereon have been supplied by Peak Urban.

Location of retaining walls are as shown on Engineering design drawings. Their as-constructed location may differ from their design location. Retaining wall heights have been supplied by Peak Urban. **The engineering detail shown hereon are preliminary only and are subject to change in final design and statutory approvals**

Compaction of any fill material placed on this site shall be completed to level one inspection and testing services in accordance with AS3798-2007.

Depth of fill values are calculated to the pre-development surface.
Copyright © Veris Australia Pty Ltd
11/03/2022.

PROPOSED LOT 2388

PROPOSED LOT 2391

2390
300m²

PROPOSED LOT 2389

LEGEND

Final surface contours based on A.H.D. datum at an interval of 0.5m, shown as: 15.5

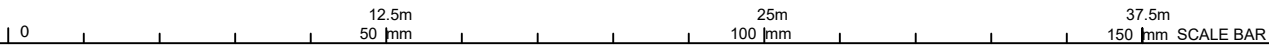
Where applicable, areas to be filled are shown as:

Depth of fill, in metres, shown as:- + 0.5

Retaining wall and retaining wall height, shown on the lower side of the wall, have been taken from plans supplied by Peak Urban and shown as: (1.2)

Bin Pad Location shown as:

ROAD



FLAGSTONE PRECINCT 1 STAGE 5B(i)
For
PEET FLAGSTONE CITY PTY LTD

IMPORTANT NOTES:
(These notes are an integral part of this plan)

This plan has been prepared for PEET FLAGSTONE CITY PTY LTD for the purposes of a Disclosure Plan Under the Land Sales Act 1984 (as amended).

It is not to be used by any other person or corporation or for any other purposes and is subject to the following limitations:

Please refer to the approved Development Application for conditions relating to the LOT and to approved Operational Works drawings for services location and possible easements.

THESE DESIGNS AND DRAWINGS ARE COPYRIGHT AND ARE NOT TO BE USED OR REPRODUCED WITHOUT THE WRITTEN PERMISSION OF VERIS

Data Sources
Cadastral Boundaries
30109-LC-Master(CW) FS94 2014.dwg
Engineering Design
FLAGSTONE - BASE - STAGE 5A 5B - DISCLOSURE INFO - 27 01 2022.dwg
Final Surface Contours
FLAGSTONE - BASE - STAGE 5A 5B - DISCLOSURE INFO - 27 01 2022.dwg
Depth of Fill
FLAGSTONE - DEPTH RANGE CONTOURS - STAGE 5A 5B - DISCLOSURE INFO - 27 01 2022.dwg

A	Original	11.03.2022	BK
Issue	Revisions	Date	Drawn

Locality: FLAGSTONE
Local Authority: LOGAN CITY COUNCIL
Horizontal Meridian: MGA, Zone 56
Vertical Level Datum: AHD D
Scale: 1:250 @ A4
Designed: Peak Urban
Drawn: BK 11/03/2022
Checked: DE 11/03/2022
Plot Date: 11 Mar, 2022
Computer File Ref: 30109-St5B-DP-(A).dwg

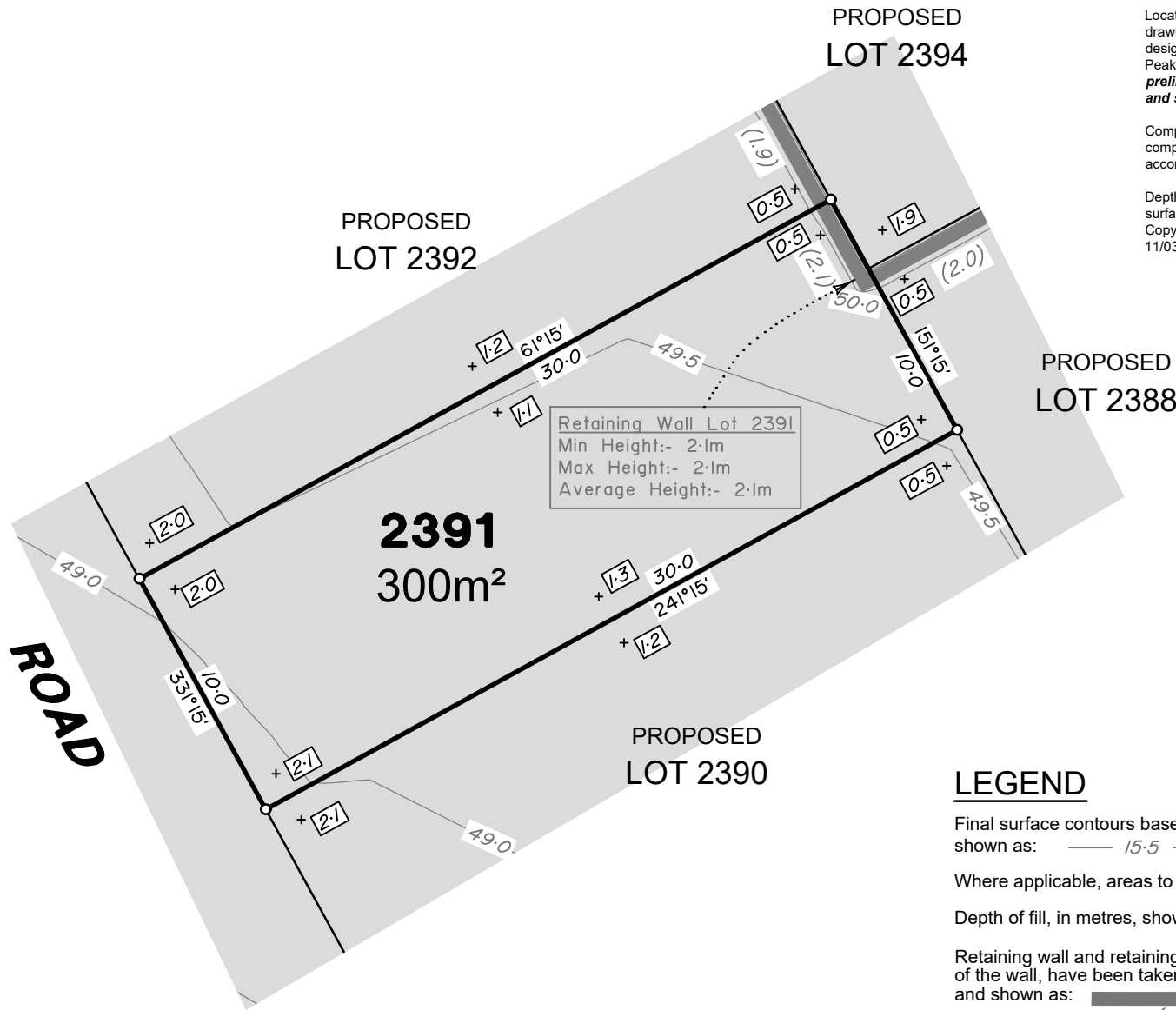
DISCLOSURE PLAN
of Proposed LOT 2390
being part of
Lot 911
on SP321079



BRISBANE (07) 3686 4700 WHITSUNDAYS (07) 4945 6600
MACKAY (07) 4957 9700 CAIRNS (07) 4252 9400

veris.com.au
ACN 615 735 727
Veris Australia Pty Ltd

Drawing No	Issue
30109-DP- 2390	A



Retaining Wall Lot 2391
 Min Height:- 2.1m
 Max Height:- 2.1m
 Average Height:- 2.1m

ADDITIONAL NOTES:

The LOT dimensions and area shown hereon are subject to final field survey and also to the requirements of Council and any other authority which may have requirements under any relevant legislation

Final surface contours shown hereon have been supplied by Peak Urban.

Location of retaining walls are as shown on Engineering design drawings. Their as-constructed location may differ from their design location. Retaining wall heights have been supplied by Peak Urban. **The engineering detail shown hereon are preliminary only and are subject to change in final design and statutory approvals**

Compaction of any fill material placed on this site shall be completed to level one inspection and testing services in accordance with AS3798-2007.

Depth of fill values are calculated to the pre-development surface.
 Copyright © Veris Australia Pty Ltd
 11/03/2022.

LEGEND

Final surface contours based on A.H.D. datum at an interval of 0.5m, shown as: 15.5

Where applicable, areas to be filled are shown as:

Depth of fill, in metres, shown as:-

Retaining wall and retaining wall height, shown on the lower side of the wall, have been taken from plans supplied by Peak Urban and shown as:

Bin Pad Location shown as:



**FLAGSTONE
 PRECINCT 1 STAGE 5B(i)**
 For
**PEET FLAGSTONE
 CITY PTY LTD**

IMPORTANT NOTES:
 (These notes are an integral part of this plan)

This plan has been prepared for PEET FLAGSTONE CITY PTY LTD for the purposes of a Disclosure Plan Under the Land Sales Act 1984 (as amended).

It is not to be used by any other person or corporation or for any other purposes and is subject to the following limitations:

Please refer to the approved Development Application for conditions relating to the LOT and to approved Operational Works drawings for services location and possible easements.

THESE DESIGNS AND DRAWINGS ARE COPYRIGHT AND ARE NOT TO BE USED OR REPRODUCED WITHOUT THE WRITTEN PERMISSION OF VERIS

Data Sources
 Cadastral Boundaries
 30109-LC-Master(CW) FS94 2014.dwg
 Engineering Design
 FLAGSTONE - BASE - STAGE 5A 5B - DISCLOSURE INFO - 27 01 2022.dwg
 Final Surface Contours
 FLAGSTONE - BASE - STAGE 5A 5B - DISCLOSURE INFO - 27 01 2022.dwg
 Depth of Fill
 FLAGSTONE - DEPTH RANGE CONTOURS - STAGE 5A 5B - DISCLOSURE INFO - 27 01 2022.dwg

Issue	Revisions	Date	BK	Drawn
A	Original	11.03.2022		

Locality: FLAGSTONE
 Local Authority: LOGAN CITY COUNCIL
 Horizontal Meridian: MGA, Zone 56
 Vertical Level Datum: AHD D
 Scale: 1:250 @ A4
 Designed: Peak Urban
 Drawn: BK 11/03/2022
 Checked: DE 11/03/2022
 Plot Date: 11 Mar, 2022
 Computer File Ref: 30109-St5Bi-DP-(A).dwg

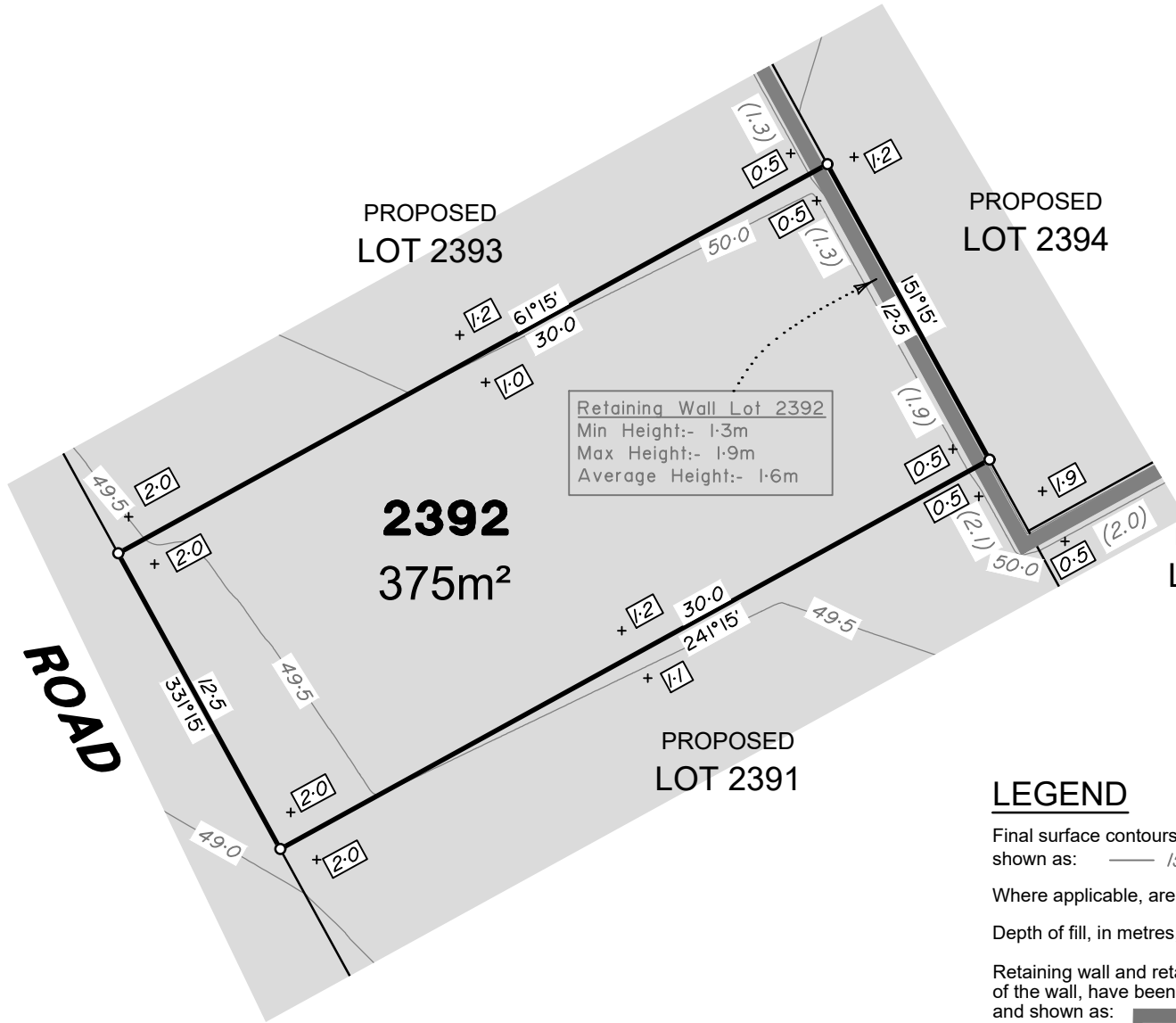
**DISCLOSURE PLAN
 of Proposed LOT 2391**
 being part of
 Lot 911
 on SP321079



BRISBANE (07) 3688 4700 WHITSUNDAYS (07) 4945 6600

MACKAY (07) 4957 9700 CAIRNS (07) 4252 9400

veris.com.au
 ACN 615 735 727
 Veris Australia Pty Ltd



Retaining Wall Lot 2392
 Min Height:- 1.3m
 Max Height:- 1.9m
 Average Height:- 1.6m

ADDITIONAL NOTES:

The LOT dimensions and area shown hereon are subject to final field survey and also to the requirements of Council and any other authority which may have requirements under any relevant legislation

Final surface contours shown hereon have been supplied by Peak Urban.

Location of retaining walls are as shown on Engineering design drawings. Their as-constructed location may differ from their design location. Retaining wall heights have been supplied by Peak Urban. **The engineering detail shown hereon are preliminary only and are subject to change in final design and statutory approvals**

Compaction of any fill material placed on this site shall be completed to level one inspection and testing services in accordance with AS3798-2007.

Depth of fill values are calculated to the pre-development surface.

Copyright © Veris Australia Pty Ltd
 11/03/2022.

PROPOSED LOT 2394

PROPOSED LOT 2393

2392
 375m²

PROPOSED LOT 2388

PROPOSED LOT 2391

ROAD

LEGEND

Final surface contours based on A.H.D. datum at an interval of 0.5m, shown as: 15.5

Where applicable, areas to be filled are shown as:

Depth of fill, in metres, shown as:- + 0.5

Retaining wall and retaining wall height, shown on the lower side of the wall, have been taken from plans supplied by Peak Urban and shown as: (1.2)

Bin Pad Location shown as:



FLAGSTONE PRECINCT 1 STAGE 5B(i)
 For
PEET FLAGSTONE CITY PTY LTD

IMPORTANT NOTES:
 (These notes are an integral part of this plan)

This plan has been prepared for PEET FLAGSTONE CITY PTY LTD for the purposes of **A Disclosure Plan Under the Land Sales Act 1984 (as amended)**.

It is not to be used by any other person or corporation or for any other purposes and is subject to the following limitations:

Please refer to the approved Development Application for conditions relating to the LOT and to approved Operational Works drawings for services location and possible easements.

THESE DESIGNS AND DRAWINGS ARE COPYRIGHT AND ARE NOT TO BE USED OR REPRODUCED WITHOUT THE WRITTEN PERMISSION OF VERIS

Data Sources
 Cadastral Boundaries
 30109-LC-Master(CW) FS94 2014.dwg
 Engineering Design
 FLAGSTONE - BASE - STAGE 5A 5B - DISCLOSURE INFO - 27 01 2022.dwg
 Final Surface Contours
 FLAGSTONE - BASE - STAGE 5A 5B - DISCLOSURE INFO - 27 01 2022.dwg
 Depth of Fill
 FLAGSTONE - DEPTH RANGE CONTOURS - STAGE 5A 5B - DISCLOSURE INFO - 27 01 2022.dwg

Issue	Revisions	Date	Drawn
A	Original	11.03.2022	BK

Locality: FLAGSTONE
 Local Authority: LOGAN CITY COUNCIL
 Horizontal Meridian: MGA, Zone 56
 Vertical Level Datum: AHD D
 Scale: 1:250 @ A4
 Designed: Peak Urban
 Drawn: BK 11/03/2022
 Checked: DE 11/03/2022
 Plot Date: 11 Mar, 2022
 Computer File Ref: 30109-St5B-DP-(A).dwg

DISCLOSURE PLAN
 of Proposed LOT 2392
 being part of
 Lot 911
 on SP321079



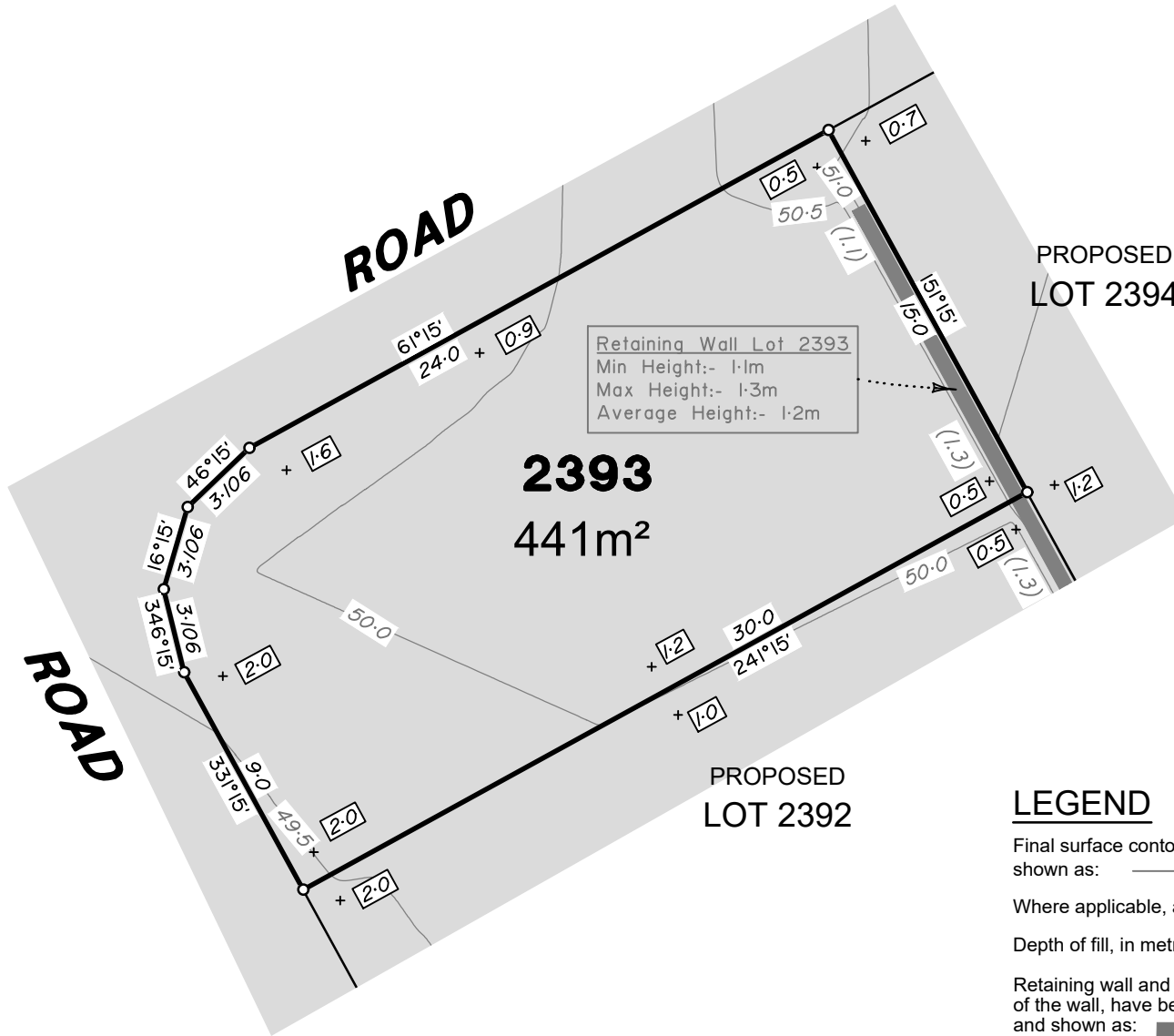
veris

BRISBANE (07) 3666 4700 WHITSUNDAYS (07) 4945 6600

MACKAY (07) 4957 9700 CAIRNS (07) 4252 9400

veris.com.au
 ACN 615 735 727
 Veris Australia Pty Ltd

Drawing No 30109-DP- 2392 Issue A



Retaining Wall Lot 2393
 Min Height:- 1.1m
 Max Height:- 1.3m
 Average Height:- 1.2m

2393
 441m²

PROPOSED LOT 2394

PROPOSED LOT 2392

LEGEND

Final surface contours based on A.H.D. datum at an interval of 0.5m, shown as: — 15.5 —

Where applicable, areas to be filled are shown as:

Depth of fill, in metres, shown as:- + 0.5

Retaining wall and retaining wall height, shown on the lower side of the wall, have been taken from plans supplied by Peak Urban and shown as:

Bin Pad Location shown as: *

0 12.5m 50 mm 25m 100 mm 37.5m 150 mm SCALE BAR

ADDITIONAL NOTES:

The LOT dimensions and area shown hereon are subject to final field survey and also to the requirements of Council and any other authority which may have requirements under any relevant legislation

Final surface contours shown hereon have been supplied by Peak Urban.

Location of retaining walls are as shown on Engineering design drawings. Their as-constructed location may differ from their design location. Retaining wall heights have been supplied by Peak Urban. *The engineering detail shown hereon are preliminary only and are subject to change in final design and statutory approvals*

Compaction of any fill material placed on this site shall be completed to level one inspection and testing services in accordance with AS3798-2007.

Depth of fill values are calculated to the pre-development surface.
 Copyright © Veris Australia Pty Ltd
 11/03/2022.

FLAGSTONE PRECINCT 1 STAGE 5B(i)
 For
PEET FLAGSTONE CITY PTY LTD

IMPORTANT NOTES:
 (These notes are an integral part of this plan)

This plan has been prepared for PEET FLAGSTONE CITY PTY LTD for the purposes of a Disclosure Plan Under the Land Sales Act 1984 (as amended).

It is not to be used by any other person or corporation or for any other purposes and is subject to the following limitations:

Please refer to the approved Development Application for conditions relating to the LOT and to approved Operational Works drawings for services location and possible easements.

THESE DESIGNS AND DRAWINGS ARE COPYRIGHT AND ARE NOT TO BE USED OR REPRODUCED WITHOUT THE WRITTEN PERMISSION OF VERIS

Data Sources
 Cadastral Boundaries
 30109-LC-Master(CW) FS94 2014.dwg
 Engineering Design
 FLAGSTONE - BASE - STAGE 5A 5B - DISCLOSURE INFO - 27 01 2022.dwg
 Final Surface Contours
 FLAGSTONE - BASE - STAGE 5A 5B - DISCLOSURE INFO - 27 01 2022.dwg
 Depth of Fill
 FLAGSTONE - DEPTH RANGE CONTOURS - STAGE 5A 5B - DISCLOSURE INFO - 27 01 2022.dwg

Issue	Revisions	Date	BK	Drawn
A	Original	11.03.2022		BK

Locality: FLAGSTONE
 Local Authority: LOGAN CITY COUNCIL
 Horizontal Meridian: MGA, Zone 56
 Vertical Level Datum: AHD D
 Scale: 1:250 @ A4
 Designed: Peak Urban
 Drawn: BK 11/03/2022
 Checked: DE 11/03/2022
 Plot Date: 11 Mar, 2022
 Computer File Ref: 30109-St5B-DP-(A).dwg

DISCLOSURE PLAN
 of Proposed LOT 2393
 being part of
 Lot 911
 on SP321079



BRISBANE (07) 3666 4700 WHITSUNDAYS (07) 4945 6600

MACKAY (07) 4957 9700 CAIRNS (07) 4252 9400

veris.com.au
 ACN 615 735 727
 Veris Australia Pty Ltd

Drawing No 30109-DP- 2393 Issue A



ROAD

Retaining Wall Lot 2393
Min Height:- 1.1m
Max Height:- 1.3m
Average Height:- 1.2m

PROPOSED
LOT 2393

Retaining Wall Lot 2392
Min Height:- 1.3m
Max Height:- 1.9m
Average Height:- 1.6m

PROPOSED
LOT 2392

Retaining Wall Lot 2391
Min Height:- 2.1m
Max Height:- 2.1m
Average Height:- 2.1m

PROPOSED
LOT 2391

Retaining Wall Lot 2388
Min Height:- 2.0m
Max Height:- 2.0m
Average Height:- 2.0m

PROPOSED
LOT 2388

PROPOSED
LOT 2395

2394
305m²

PROPOSED
LOT 2387

LEGEND

Final surface contours based on A.H.D. datum at an interval of 0.5m, shown as: — 15.5 —

Where applicable, areas to be filled are shown as:

Depth of fill, in metres, shown as:- + 0.5

Retaining wall and retaining wall height, shown on the lower side of the wall, have been taken from plans supplied by Peak Urban and shown as:

Bin Pad Location shown as: *

ADDITIONAL NOTES:

The LOT dimensions and area shown hereon are subject to final field survey and also to the requirements of Council and any other authority which may have requirements under any relevant legislation

Final surface contours shown hereon have been supplied by Peak Urban.

Location of retaining walls are as shown on Engineering design drawings. Their as-constructed location may differ from their design location. Retaining wall heights have been supplied by Peak Urban. **The engineering detail shown hereon are preliminary only and are subject to change in final design and statutory approvals**

Compaction of any fill material placed on this site shall be completed to level one inspection and testing services in accordance with AS3798-2007.

Depth of fill values are calculated to the pre-development surface.
Copyright © Veris Australia Pty Ltd
11/03/2022.

**FLAGSTONE
PRECINCT 1 STAGE 5B(i)**
For
**PEET FLAGSTONE
CITY PTY LTD**

IMPORTANT NOTES:
(These notes are an integral part of this plan)

This plan has been prepared for **PEET FLAGSTONE CITY PTY LTD** for the purposes of **A Disclosure Plan Under the Land Sales Act 1984 (as amended)**.

It is not to be used by any other person or corporation or for any other purposes and is subject to the following limitations:

Please refer to the approved Development Application for conditions relating to the LOT and to approved Operational Works drawings for services location and possible easements.

THESE DESIGNS AND DRAWINGS ARE COPYRIGHT AND ARE NOT TO BE USED OR REPRODUCED WITHOUT THE WRITTEN PERMISSION OF VERIS

Data Sources
Cadastral Boundaries
30109-LC-Master(CW) FS94 2014.dwg
Engineering Design
FLAGSTONE - BASE - STAGE 5A 5B - DISCLOSURE INFO - 27 01 2022.dwg
Final Surface Contours
FLAGSTONE - BASE - STAGE 5A 5B - DISCLOSURE INFO - 27 01 2022.dwg
Depth of Fill
FLAGSTONE - DEPTH RANGE CONTOURS - STAGE 5A 5B - DISCLOSURE INFO - 27 01 2022.dwg

Issue	Original	Revisions	Date	BK	Drawn
A			11.03.2022		

Locality: FLAGSTONE
Local Authority: LOGAN CITY COUNCIL
Horizontal Meridian: MGA, Zone 56
Vertical Level Datum: AHD D
Scale: 1:250 @ A4
Designed: Peak Urban
Drawn: BK 11/03/2022
Checked: DE 11/03/2022
Plot Date: 11 Mar, 2022
Computer File Ref: 30109-St5B-DP-(A).dwg

DISCLOSURE PLAN
of Proposed LOT 2394
being part of
Lot 911
on SP321079



veris

BRISBANE (07) 3688 4700 WHITSUNDAYS (07) 4945 6600

MACKAY (07) 4957 9700 CAIRNS (07) 4252 9400

veris.com.au
ACN 615 735 727
Veris Australia Pty Ltd

Drawing No
30109-DP- 2394

Issue
A





ROAD

PROPOSED LOT 2394

PROPOSED LOT 2396

2395
381m²

PROPOSED LOT 2386

PROPOSED LOT 2387

PROPOSED LOT 2388

Retaining Wall Lot 2395
Min Height:- 1.0m
Max Height:- 1.0m
Average Height:- 1.0m

Retaining Wall Lot 2387
Min Height:- 2.0m
Max Height:- 2.0m
Average Height:- 2.0m

ADDITIONAL NOTES:

The LOT dimensions and area shown hereon are subject to final field survey and also to the requirements of Council and any other authority which may have requirements under any relevant legislation

Final surface contours shown hereon have been supplied by Peak Urban.

Location of retaining walls are as shown on Engineering design drawings. Their as-constructed location may differ from their design location. Retaining wall heights have been supplied by Peak Urban. **The engineering detail shown hereon are preliminary only and are subject to change in final design and statutory approvals**

Compaction of any fill material placed on this site shall be completed to level one inspection and testing services in accordance with AS3798-2007.

Depth of fill values are calculated to the pre-development surface.
Copyright © Veris Australia Pty Ltd
11/03/2022.

**FLAGSTONE
PRECINCT 1 STAGE 5B(i)**
For
**PEET FLAGSTONE
CITY PTY LTD**

IMPORTANT NOTES:
(These notes are an integral part of this plan)

This plan has been prepared for PEET FLAGSTONE CITY PTY LTD for the purposes of **A Disclosure Plan Under the Land Sales Act 1984 (as amended)**.

It is not to be used by any other person or corporation or for any other purposes and is subject to the following limitations:

Please refer to the approved Development Application for conditions relating to the LOT and to approved Operational Works drawings for services location and possible easements.

THESE DESIGNS AND DRAWINGS ARE COPYRIGHT AND ARE NOT TO BE USED OR REPRODUCED WITHOUT THE WRITTEN PERMISSION OF VERIS

Data Sources
Cadastral Boundaries
30109-LC-Master(CW) FS94 2014.dwg
Engineering Design
FLAGSTONE - BASE - STAGE 5A 5B - DISCLOSURE INFO - 27 01 2022.dwg
Final Surface Contours
FLAGSTONE - BASE - STAGE 5A 5B - DISCLOSURE INFO - 27 01 2022.dwg
Depth of Fill
FLAGSTONE - DEPTH RANGE CONTOURS - STAGE 5A 5B - DISCLOSURE INFO - 27 01 2022.dwg

Issue	Revisions	Date	BK	Drawn
A	Original	11.03.2022		

Locality: FLAGSTONE
Local Authority: LOGAN CITY COUNCIL
Horizontal Meridian: MGA, Zone 56
Vertical Level Datum: AHD D
Scale: 1:250 @ A4
Designed: Peak Urban
Drawn: BK 11/03/2022
Checked: DE 11/03/2022
Plot Date: 11 Mar, 2022
Computer File Ref: 30109-St5B-DP-(A).dwg

**DISCLOSURE PLAN
of Proposed LOT 2395**
being part of
Lot 911
on SP321079



BRISBANE (07) 3688 4700 WHITSUNDAYS (07) 4945 6600
MACKAY (07) 4957 9700 CAIRNS (07) 4252 9400

veris.com.au
ACN 615 735 727
Veris Australia Pty Ltd

Drawing No 30109-DP- 2395 Issue A

LEGEND

Final surface contours based on A.H.D. datum at an interval of 0.5m, shown as: — 15.5 —

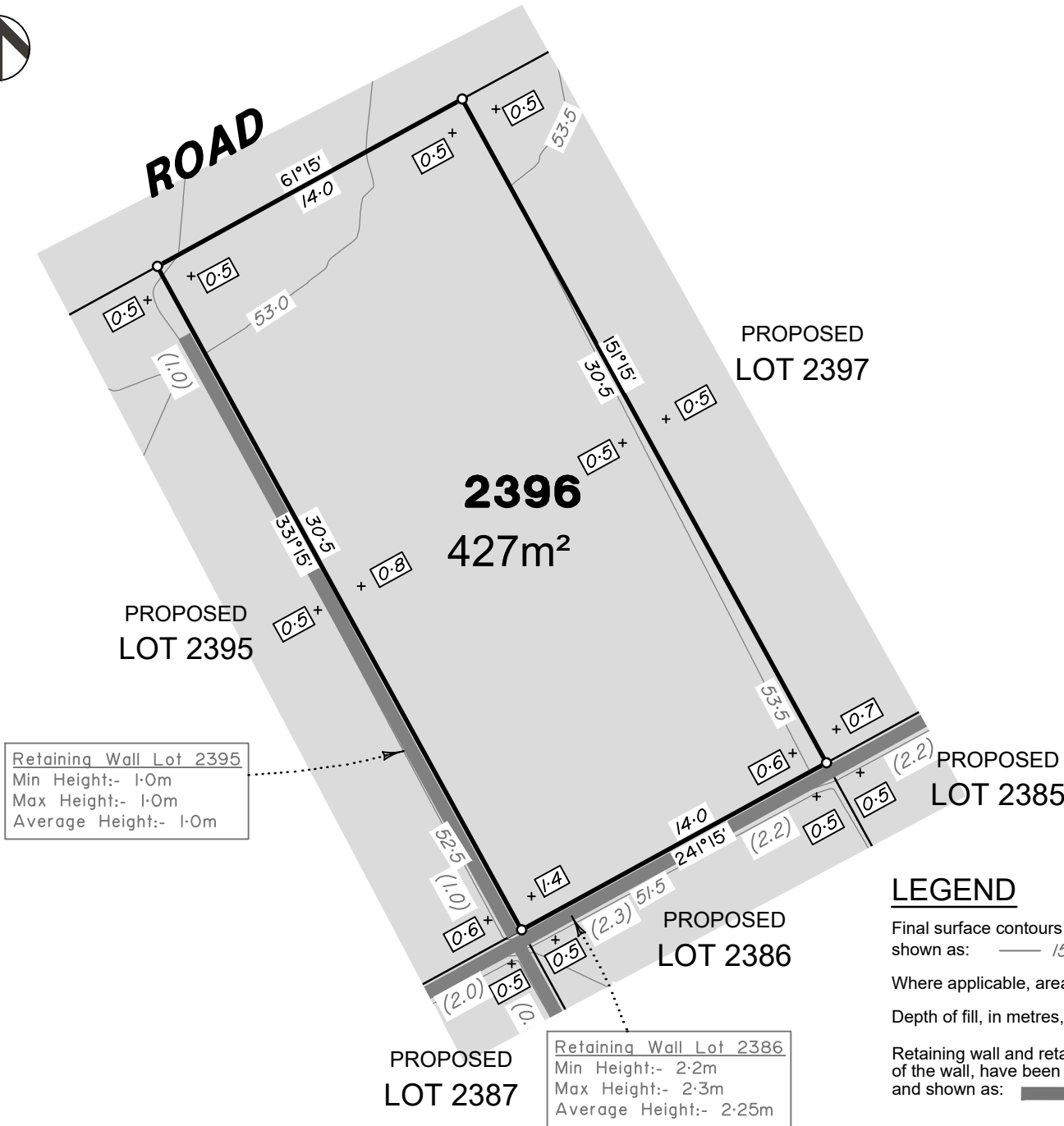
Where applicable, areas to be filled are shown as:

Depth of fill, in metres, shown as:- + 0.5

Retaining wall and retaining wall height, shown on the lower side of the wall, have been taken from plans supplied by Peak Urban and shown as:

Bin Pad Location shown as: *

12.5m 25m 37.5m
50 mm 100 mm 150 mm SCALE BAR



Retaining Wall Lot 2395
 Min Height:- 1.0m
 Max Height:- 1.0m
 Average Height:- 1.0m

PROPOSED LOT 2387

Retaining Wall Lot 2386
 Min Height:- 2.2m
 Max Height:- 2.3m
 Average Height:- 2.25m

ADDITIONAL NOTES:

The LOT dimensions and area shown hereon are subject to final field survey and also to the requirements of Council and any other authority which may have requirements under any relevant legislation

Final surface contours shown hereon have been supplied by Peak Urban.

Location of retaining walls are as shown on Engineering design drawings. Their as-constructed location may differ from their design location. Retaining wall heights have been supplied by Peak Urban. **The engineering detail shown hereon are preliminary only and are subject to change in final design and statutory approvals**

Compaction of any fill material placed on this site shall be completed to level one inspection and testing services in accordance with AS3798-2007.

Depth of fill values are calculated to the pre-development surface.
 Copyright © Veris Australia Pty Ltd
 11/03/2022.

FLAGSTONE PRECINCT 1 STAGE 5B(i)
 For
PEET FLAGSTONE CITY PTY LTD

IMPORTANT NOTES:
 (These notes are an integral part of this plan)

This plan has been prepared for **PEET FLAGSTONE CITY PTY LTD** for the purposes of **A Disclosure Plan Under the Land Sales Act 1984 (as amended)**.

It is not to be used by any other person or corporation or for any other purposes and is subject to the following limitations:

Please refer to the approved Development Application for conditions relating to the LOT and to approved Operational Works drawings for services location and possible easements.

THESE DESIGNS AND DRAWINGS ARE COPYRIGHT AND ARE NOT TO BE USED OR REPRODUCED WITHOUT THE WRITTEN PERMISSION OF VERIS

Data Sources
 Cadastral Boundaries
 30109-LC-Master(CW) FS94 2014.dwg
 Engineering Design
 FLAGSTONE - BASE - STAGE 5A 5B - DISCLOSURE INFO - 27 01 2022.dwg
 Final Surface Contours
 FLAGSTONE - BASE - STAGE 5A 5B - DISCLOSURE INFO - 27 01 2022.dwg
 Depth of Fill
 FLAGSTONE - DEPTH RANGE CONTOURS - STAGE 5A 5B - DISCLOSURE INFO - 27 01 2022.dwg

Issue	Revisions	Date	Drawn	BK
A	Original	11.03.2022		BK

Locality: FLAGSTONE
 Local Authority: LOGAN CITY COUNCIL
 Horizontal Meridian: MGA, Zone 56
 Vertical Level Datum: AHD D
 Scale: 1:250 @ A4
 Designed: Peak Urban
 Drawn: BK 11/03/2022
 Checked: DE 11/03/2022
 Plot Date: 11 Mar, 2022
 Computer File Ref: 30109-St5B-DP-(A).dwg

DISCLOSURE PLAN
 of Proposed LOT 2396
 being part of
 Lot 911
 on SP321079



BRISBANE (07) 3688 4700 WHITSUNDAYS (07) 4945 6600

MACKAY (07) 4957 9700 CAIRNS (07) 4252 9400

veris.com.au
 ACN 615 735 727
 Veris Australia Pty Ltd

Drawing No
30109-DP- 2396

Issue
A

LEGEND

Final surface contours based on A.H.D. datum at an interval of 0.5m, shown as: — 15.5 —

Where applicable, areas to be filled are shown as:

Depth of fill, in metres, shown as:- + 0.5

Retaining wall and retaining wall height, shown on the lower side of the wall, have been taken from plans supplied by Peak Urban and shown as:

Bin Pad Location shown as: *

0 12.5m 25m 37.5m 50mm 100mm 150mm SCALE BAR



ROAD

PROPOSED
LOT 2396

PROPOSED
LOT 2386

2397
381m²


PROPOSED
LOT 2398

PROPOSED
LOT 2384


PROPOSED
LOT 2385

LEGEND

Final surface contours based on A.H.D. datum at an interval of 0.5m, shown as: — 15.5 —

Where applicable, areas to be filled are shown as: 

Depth of fill, in metres, shown as:- +0.5

Retaining wall and retaining wall height, shown on the lower side of the wall, have been taken from plans supplied by Peak Urban and shown as: 

Bin Pad Location shown as: *

Retaining Wall Lot 2385
Min Height:- 2.2m
Max Height:- 2.2m
Average Height:- 2.2m

Retaining Wall Lot 2397
Min Height:- 0.9m
Max Height:- 0.9m
Average Height:- 0.9m

ADDITIONAL NOTES:

The LOT dimensions and area shown hereon are subject to final field survey and also to the requirements of Council and any other authority which may have requirements under any relevant legislation

Final surface contours shown hereon have been supplied by Peak Urban.

Location of retaining walls are as shown on Engineering design drawings. Their as-constructed location may differ from their design location. Retaining wall heights have been supplied by Peak Urban. **The engineering detail shown hereon are preliminary only and are subject to change in final design and statutory approvals**

Compaction of any fill material placed on this site shall be completed to level one inspection and testing services in accordance with AS3798-2007.

Depth of fill values are calculated to the pre-development surface.
Copyright © Veris Australia Pty Ltd
11/03/2022.

**FLAGSTONE
PRECINCT 1 STAGE 5B(i)**
For
**PEET FLAGSTONE
CITY PTY LTD**

IMPORTANT NOTES:
(These notes are an integral part of this plan)

This plan has been prepared for **PEET FLAGSTONE CITY PTY LTD** for the purposes of **A Disclosure Plan Under the Land Sales Act 1984 (as amended)**.

It is not to be used by any other person or corporation or for any other purposes and is subject to the following limitations:

Please refer to the approved Development Application for conditions relating to the LOT and to approved Operational Works drawings for services location and possible easements.

THESE DESIGNS AND DRAWINGS ARE COPYRIGHT AND ARE NOT TO BE USED OR REPRODUCED WITHOUT THE WRITTEN PERMISSION OF VERIS

Data Sources
Cadastral Boundaries
30109-LC-Master(CW) FS94 2014.dwg
Engineering Design
FLAGSTONE - BASE - STAGE 5A 5B - DISCLOSURE INFO - 27 01 2022.dwg
Final Surface Contours
FLAGSTONE - BASE - STAGE 5A 5B - DISCLOSURE INFO - 27 01 2022.dwg
Depth of Fill
FLAGSTONE - DEPTH RANGE CONTOURS - STAGE 5A 5B - DISCLOSURE INFO - 27 01 2022.dwg

Issue	Revisions	Date	Drawn
A	Original	11.03.2022	BK

Locality: FLAGSTONE
Local Authority: LOGAN CITY COUNCIL
Horizontal Meridian: MGA, Zone 56
Vertical Level Datum: AHD D
Scale: 1:250 @ A4
Designed: Peak Urban
Drawn: BK 11/03/2022
Checked: DE 11/03/2022
Plot Date: 11 Mar, 2022
Computer File Ref: 30109-St5B-DP-(A).dwg

DISCLOSURE PLAN
of Proposed LOT 2397
being part of
Lot 911
on SP321079



veris

BRISBANE (07) 3688 4700 WHITSUNDAYS (07) 4945 6600

MACKAY (07) 4957 9700 CAIRNS (07) 4252 9400

veris.com.au
ACN 615 735 727
Veris Australia Pty Ltd

Drawing No
30109-DP- 2397

Issue
A





ROAD

61°15'
10.0
0.5
54.5
0.5
(0.9)

2398
305m²

PROPOSED
LOT 2399

PROPOSED
LOT 2397

Retaining Wall Lot 2397
Min Height:- 0.9m
Max Height:- 0.9m
Average Height:- 0.9m

PROPOSED
LOT 2383

PROPOSED
LOT 2384

PROPOSED
LOT 2385

Retaining Wall Lot 2384
Min Height:- 2.2m
Max Height:- 2.2m
Average Height:- 2.2m

ADDITIONAL NOTES:

The LOT dimensions and area shown hereon are subject to final field survey and also to the requirements of Council and any other authority which may have requirements under any relevant legislation

Final surface contours shown hereon have been supplied by Peak Urban.

Location of retaining walls are as shown on Engineering design drawings. Their as-constructed location may differ from their design location. Retaining wall heights have been supplied by Peak Urban. **The engineering detail shown hereon are preliminary only and are subject to change in final design and statutory approvals**

Compaction of any fill material placed on this site shall be completed to level one inspection and testing services in accordance with AS3798-2007.

Depth of fill values are calculated to the pre-development surface.
Copyright © Veris Australia Pty Ltd
11/03/2022.

**FLAGSTONE
PRECINCT 1 STAGE 5B(i)**
For
**PEET FLAGSTONE
CITY PTY LTD**

IMPORTANT NOTES:
(These notes are an integral part of this plan)

This plan has been prepared for **PEET FLAGSTONE CITY PTY LTD** for the purposes of **A Disclosure Plan Under the Land Sales Act 1984 (as amended)**.

It is not to be used by any other person or corporation or for any other purposes and is subject to the following limitations:

Please refer to the approved Development Application for conditions relating to the LOT and to approved Operational Works drawings for services location and possible easements.

THESE DESIGNS AND DRAWINGS ARE COPYRIGHT AND ARE NOT TO BE USED OR REPRODUCED WITHOUT THE WRITTEN PERMISSION OF VERIS

Data Sources
Cadastral Boundaries
30109-LC-Master(CW) FS94 2014.dwg
Engineering Design
FLAGSTONE - BASE - STAGE 5A 5B - DISCLOSURE INFO - 27 01 2022.dwg
Final Surface Contours
FLAGSTONE - BASE - STAGE 5A 5B - DISCLOSURE INFO - 27 01 2022.dwg
Depth of Fill
FLAGSTONE - DEPTH RANGE CONTOURS - STAGE 5A 5B - DISCLOSURE INFO - 27 01 2022.dwg

Issue	Revisions	Date	BK	Drawn
A	Original	11.03.2022		

Locality: FLAGSTONE
Local Authority: LOGAN CITY COUNCIL
Horizontal Meridian: MGA, Zone 56
Vertical Level Datum: AHD D
Scale: 1:250 @ A4
Designed: Peak Urban
Drawn: BK 11/03/2022
Checked: DE 11/03/2022
Plot Date: 11 Mar, 2022
Computer File Ref: 30109-St5B1-DP-(A).dwg

DISCLOSURE PLAN
of Proposed LOT 2398
being part of
Lot 911
on SP321079



veris

BRISBANE (07) 3688 4700 WHITSUNDAYS (07) 4945 6600

MACKAY (07) 4957 9700 CAIRNS (07) 4252 9400

veris.com.au
ACN 615 735 727
Veris Australia Pty Ltd

Drawing No
30109-DP- 2398
Issue
A

LEGEND

Final surface contours based on A.H.D. datum at an interval of 0.5m, shown as: — 15.5 —

Where applicable, areas to be filled are shown as:

Depth of fill, in metres, shown as:- +0.5

Retaining wall and retaining wall height, shown on the lower side of the wall, have been taken from plans supplied by Peak Urban and shown as:

(1.2)

Bin Pad Location shown as: *

12.5m 25m 37.5m
50 mm 100 mm 150 mm SCALE BAR



ROAD

PROPOSED LOT 2398

2399
305m²

PROPOSED LOT 2400

PROPOSED LOT 2382

PROPOSED LOT 2383

PROPOSED LOT 2384

Retaining Wall Lot 2383
Min Height:- 2.2m
Max Height:- 2.2m
Average Height:- 2.2m

ADDITIONAL NOTES:

The LOT dimensions and area shown hereon are subject to final field survey and also to the requirements of Council and any other authority which may have requirements under any relevant legislation

Final surface contours shown hereon have been supplied by Peak Urban.

Location of retaining walls are as shown on Engineering design drawings. Their as-constructed location may differ from their design location. Retaining wall heights have been supplied by Peak Urban. **The engineering detail shown hereon are preliminary only and are subject to change in final design and statutory approvals**

Compaction of any fill material placed on this site shall be completed to level one inspection and testing services in accordance with AS3798-2007.

Depth of fill values are calculated to the pre-development surface.
Copyright © Veris Australia Pty Ltd
11/03/2022.

**FLAGSTONE
PRECINCT 1 STAGE 5B(i)**
For
**PEET FLAGSTONE
CITY PTY LTD**

IMPORTANT NOTES:
(These notes are an integral part of this plan)

This plan has been prepared for **PEET FLAGSTONE CITY PTY LTD** for the purposes of **A Disclosure Plan Under the Land Sales Act 1984 (as amended)**.

It is not to be used by any other person or corporation or for any other purposes and is subject to the following limitations:

Please refer to the approved Development Application for conditions relating to the LOT and to approved Operational Works drawings for services location and possible easements.

THESE DESIGNS AND DRAWINGS ARE COPYRIGHT AND ARE NOT TO BE USED OR REPRODUCED WITHOUT THE WRITTEN PERMISSION OF VERIS

Data Sources
Cadastral Boundaries
30109-LC-Master(CW) FS94 2014.dwg
Engineering Design
FLAGSTONE - BASE - STAGE 5A 5B - DISCLOSURE INFO - 27 01 2022.dwg
Final Surface Contours
FLAGSTONE - BASE - STAGE 5A 5B - DISCLOSURE INFO - 27 01 2022.dwg
Depth of Fill
FLAGSTONE - DEPTH RANGE CONTOURS - STAGE 5A 5B - DISCLOSURE INFO - 27 01 2022.dwg

Issue	Revisions	Date	BK	Drawn
A	Original	11.03.2022		BK

Locality: FLAGSTONE
Local Authority: LOGAN CITY COUNCIL
Horizontal Meridian: MGA, Zone 56
Vertical Level Datum: AHD D
Scale: 1:250 @ A4
Designed: Peak Urban
Drawn: BK 11/03/2022
Checked: DE 11/03/2022
Plot Date: 11 Mar, 2022
Computer File Ref: 30109-St5B-DP-(A).dwg

DISCLOSURE PLAN
of Proposed LOT 2399
being part of
Lot 911
on SP321079



veris

BRISBANE (07) 3688 4700 WHITSUNDAYS (07) 4945 6600

MACKAY (07) 4957 9700 CAIRNS (07) 4252 9400

veris.com.au
ACN 615 735 727
Veris Australia Pty Ltd

Drawing No
30109-DP- 2399
Issue
A

LEGEND

Final surface contours based on A.H.D. datum at an interval of 0.5m, shown as: 15.5

Where applicable, areas to be filled are shown as:

Depth of fill, in metres, shown as:- +0.5

Retaining wall and retaining wall height, shown on the lower side of the wall, have been taken from plans supplied by Peak Urban and shown as:

Bin Pad Location shown as:





ROAD

PROPOSED LOT 2399

PROPOSED LOT 2401

PROPOSED LOT 2381

PROPOSED LOT 2382

PROPOSED LOT 2383

2400
381m²

Retaining Wall Lot 2382
Min Height:- 2.2m
Max Height:- 2.2m
Average Height:- 2.2m

ADDITIONAL NOTES:

The LOT dimensions and area shown hereon are subject to final field survey and also to the requirements of Council and any other authority which may have requirements under any relevant legislation

Final surface contours shown hereon have been supplied by Peak Urban.

Location of retaining walls are as shown on Engineering design drawings. Their as-constructed location may differ from their design location. Retaining wall heights have been supplied by Peak Urban. **The engineering detail shown hereon are preliminary only and are subject to change in final design and statutory approvals**

Compaction of any fill material placed on this site shall be completed to level one inspection and testing services in accordance with AS3798-2007.

Depth of fill values are calculated to the pre-development surface.
Copyright © Veris Australia Pty Ltd
11/03/2022.

**FLAGSTONE
PRECINCT 1 STAGE 5B(i)**
For
**PEET FLAGSTONE
CITY PTY LTD**

IMPORTANT NOTES:
(These notes are an integral part of this plan)

This plan has been prepared for **PEET FLAGSTONE CITY PTY LTD** for the purposes of **A Disclosure Plan Under the Land Sales Act 1984 (as amended)**.

It is not to be used by any other person or corporation or for any other purposes and is subject to the following limitations:

Please refer to the approved Development Application for conditions relating to the LOT and to approved Operational Works drawings for services location and possible easements.

THESE DESIGNS AND DRAWINGS ARE COPYRIGHT AND ARE NOT TO BE USED OR REPRODUCED WITHOUT THE WRITTEN PERMISSION OF VERIS

Data Sources
Cadastral Boundaries
30109-LC-Master(CW) FS94 2014.dwg
Engineering Design
FLAGSTONE - BASE - STAGE 5A 5B - DISCLOSURE INFO - 27 01 2022.dwg
Final Surface Contours
FLAGSTONE - BASE - STAGE 5A 5B - DISCLOSURE INFO - 27 01 2022.dwg
Depth of Fill
FLAGSTONE - DEPTH RANGE CONTOURS - STAGE 5A 5B - DISCLOSURE INFO - 27 01 2022.dwg

Issue	Revisions	Date	Drawn
A	Original	11.03.2022	BK

Locality: FLAGSTONE
Local Authority: LOGAN CITY COUNCIL
Horizontal Meridian: MGA, Zone 56
Vertical Level Datum: AHD D
Scale: 1:250 @ A4
Designed: Peak Urban
Drawn: BK 11/03/2022
Checked: DE 11/03/2022
Plot Date: 11 Mar, 2022
Computer File Ref: 30109-St5B-DP-(A).dwg

DISCLOSURE PLAN
of Proposed LOT 2400
being part of
Lot 911
on SP321079



veris

BRISBANE (07) 3686 4700 WHITSUNDAYS (07) 4945 6600

MACKAY (07) 4957 9700 CAIRNS (07) 4252 9400

veris.com.au
ACN 615 735 727
Veris Australia Pty Ltd

Drawing No 30109-DP- 2400 Issue A

LEGEND

Final surface contours based on A.H.D. datum at an interval of 0.5m, shown as: 15.5

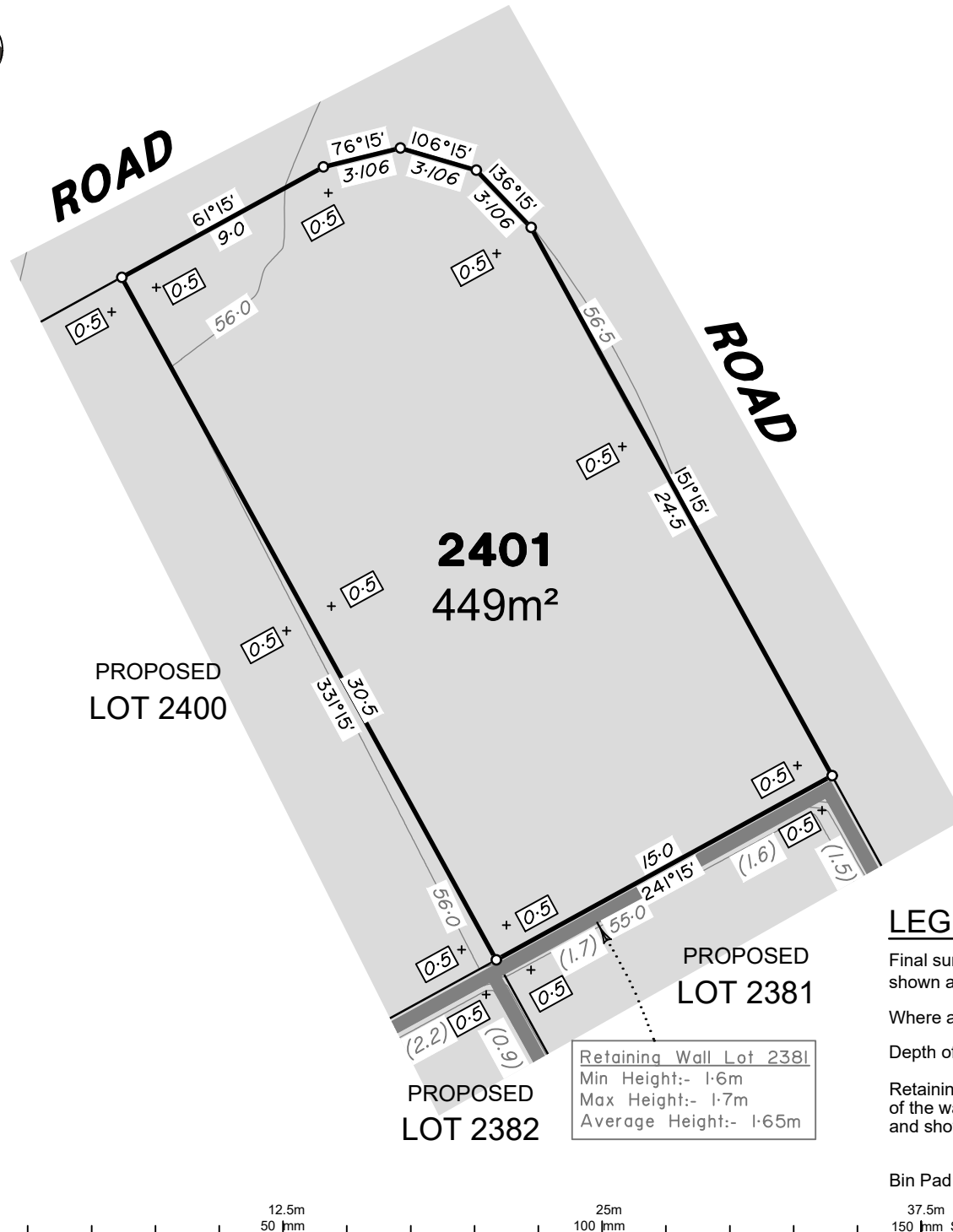
Where applicable, areas to be filled are shown as:

Depth of fill, in metres, shown as:- +0.5

Retaining wall and retaining wall height, shown on the lower side of the wall, have been taken from plans supplied by Peak Urban and shown as: (1.2)

Bin Pad Location shown as:

12.5m 25m 37.5m
50 mm 100 mm 150 mm SCALE BAR



ADDITIONAL NOTES:

The LOT dimensions and area shown hereon are subject to final field survey and also to the requirements of Council and any other authority which may have requirements under any relevant legislation

Final surface contours shown hereon have been supplied by Peak Urban.

Location of retaining walls are as shown on Engineering design drawings. Their as-constructed location may differ from their design location. Retaining wall heights have been supplied by Peak Urban. **The engineering detail shown hereon are preliminary only and are subject to change in final design and statutory approvals**

Compaction of any fill material placed on this site shall be completed to level one inspection and testing services in accordance with AS3798-2007.

Depth of fill values are calculated to the pre-development surface.

Copyright © Veris Australia Pty Ltd
11/03/2022.

**FLAGSTONE
PRECINCT 1 STAGE 5B(i)**
For
**PEET FLAGSTONE
CITY PTY LTD**

IMPORTANT NOTES:
(These notes are an integral part of this plan)

This plan has been prepared for **PEET FLAGSTONE CITY PTY LTD** for the purposes of **A Disclosure Plan Under the Land Sales Act 1984 (as amended)**.

It is not to be used by any other person or corporation or for any other purposes and is subject to the following limitations:

Please refer to the approved Development Application for conditions relating to the LOT and to approved Operational Works drawings for services location and possible easements.

THESE DESIGNS AND DRAWINGS ARE COPYRIGHT AND ARE NOT TO BE USED OR REPRODUCED WITHOUT THE WRITTEN PERMISSION OF VERIS

Data Sources
Cadastral Boundaries
30109-LC-Master(CW) FS94 2014.dwg
Engineering Design
FLAGSTONE - BASE - STAGE 5A 5B - DISCLOSURE INFO - 27 01 2022.dwg
Final Surface Contours
FLAGSTONE - BASE - STAGE 5A 5B - DISCLOSURE INFO - 27 01 2022.dwg
Depth of Fill
FLAGSTONE - DEPTH RANGE CONTOURS - STAGE 5A 5B - DISCLOSURE INFO - 27 01 2022.dwg

Issue	Revisions	Date	Drawn
A	Original	11.03.2022	BK

Locality: FLAGSTONE
Local Authority: LOGAN CITY COUNCIL
Horizontal Meridian: MGA, Zone 56
Vertical Level Datum: AHD D
Scale: 1:250 @ A4
Designed: Peak Urban
Drawn: BK 11/03/2022
Checked: DE 11/03/2022
Plot Date: 11 Mar, 2022
Computer File Ref: 30109-St5B1-DP-(A).dwg

**DISCLOSURE PLAN
of Proposed LOT 2401
being part of
Lot 911
on SP321079**



BRISBANE (07) 3688 4700 WHITSUNDAYS (07) 4945 6600

MACKAY (07) 4957 9700 CAIRNS (07) 4252 9400

veris.com.au
ACN 615 735 727
Veris Australia Pty Ltd

Drawing No 30109-DP- 2401 Issue A

LEGEND

Final surface contours based on A.H.D. datum at an interval of 0.5m, shown as: — 15.5 —

Where applicable, areas to be filled are shown as:

Depth of fill, in metres, shown as:- +0.5

Retaining wall and retaining wall height, shown on the lower side of the wall, have been taken from plans supplied by Peak Urban and shown as:

Bin Pad Location shown as: *

12.5m 25m 37.5m
50 mm 100 mm 150 mm SCALE BAR