

# KELVIN COURT

## LEGEND

Retaining Wall shown as:-

Sewer line

Sewer Manhole

Roofwater Drainage line and

Catch Pit

Stormwater Drainage Line

Stormwater Manhole

Stormwater Pit

Water Main

Water Conduit

Water Service Point of Entry

Underground Electricity, Street Light,

Electricity Pillar & NBN

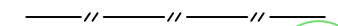
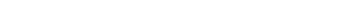
Developer Fencing

Concrete Pathway

Zero Setback Building Line

Proposed Services Easement

Indicative Parking Access Location



## ADDITIONAL NOTES:

Allotments used as Multiple Residential Allotments in accordance with the approved Plan of Development may have a reduced primary road setback to 3.0metres as noted on the Plan of Development Table.

Compaction of any fill material placed on this site shall be completed to level one inspection and testing services in accordance with AS3798-2007.

Location of sewer, roofwater, stormwater, water reticulation and electricity lines, manholes and pits are those shown on engineering design drawings, supplied by Bradlees Meinhardt, and may differ from the as-constructed location.

Plan of Development information Supplied by RPS Group PLC.

Copyright © Queensland Surveying Pty Ltd a Veris Company  
Dec 2017.

PROPOSED  
LOT 541

**540**  
**375m<sup>2</sup>**

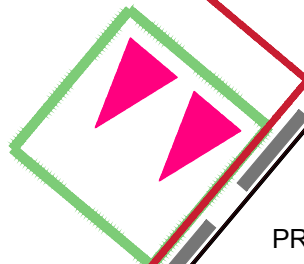
PROPOSED  
LOT 539

PROPOSED  
LOT 538

PROPOSED  
LOT 537

PROPOSED  
LOT 535

PROPOSED  
LOT 536

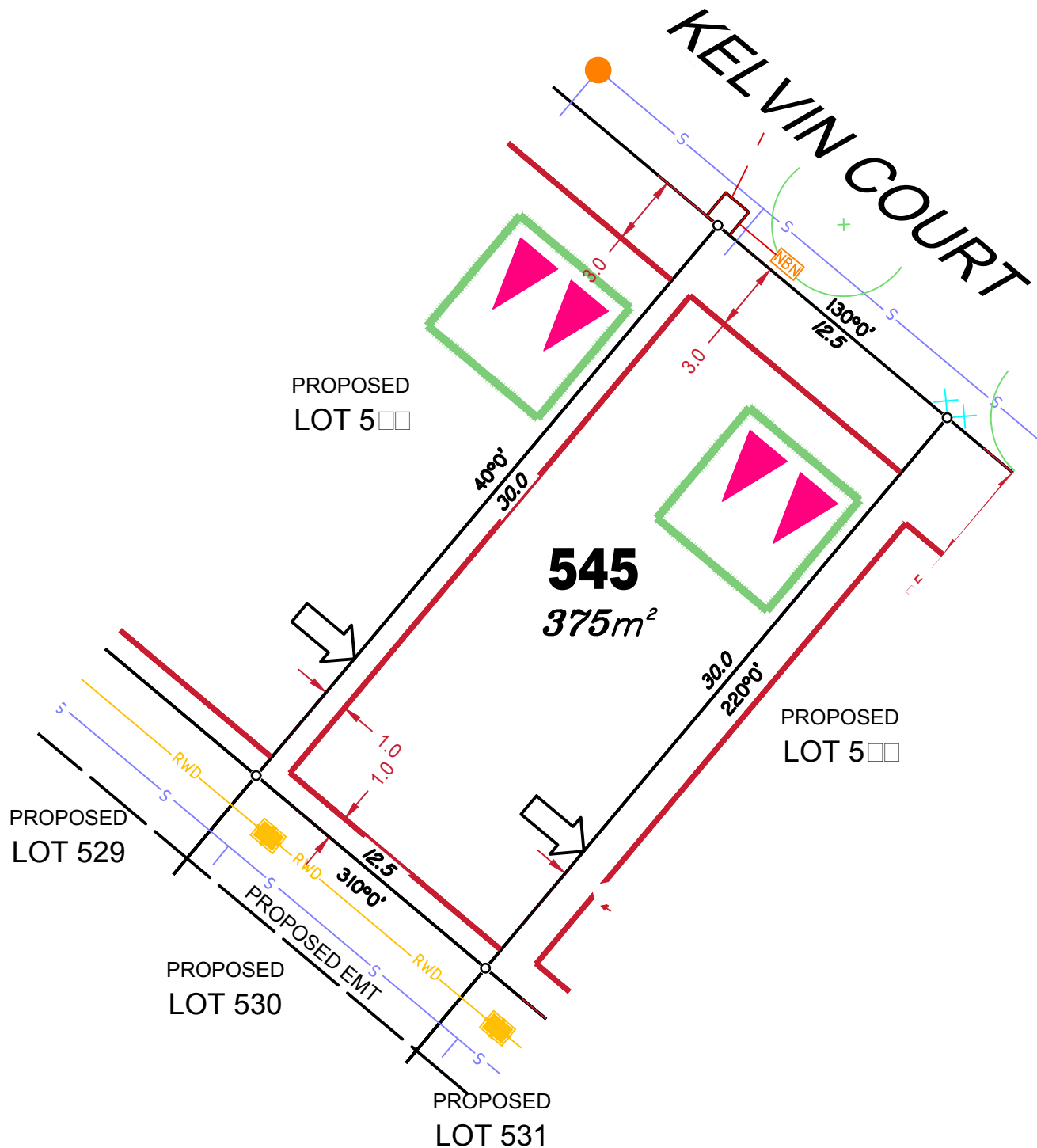












## LEGEND

Retaining Wall shown as:-

Sewer line

Sewer Manhole

Roofwater Drainage line and

Catch Pit

Stormwater Drainage Line

Stormwater Manhole

Stormwater Pit

Water Main

Water Conduit

Water Service Point of Entry

Underground Electricity, Street Light,

Electricity Pillar & NBN

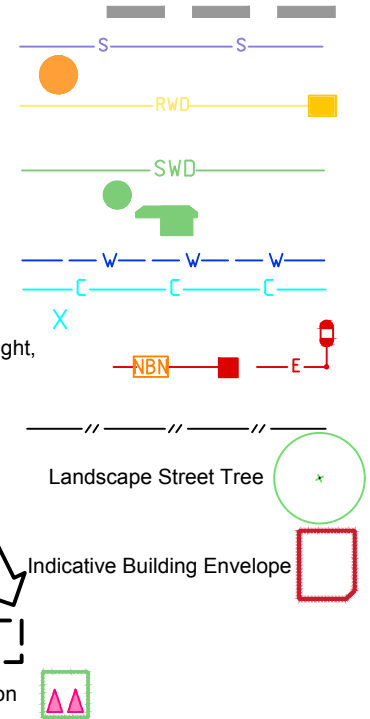
Developer Fencing

Concrete Pathway

Zero Setback Building Line

Proposed Services Easement

Indicative Parking Access Location



## ADDITIONAL NOTES:

Allotments used as Multiple Residential Allotments in accordance with the approved Plan of Development may have a reduced primary road setback to 3.0metres as noted on the Plan of Development Table.

Compaction of any fill material placed on this site shall be completed to level one inspection and testing services in accordance with AS3798-2007.

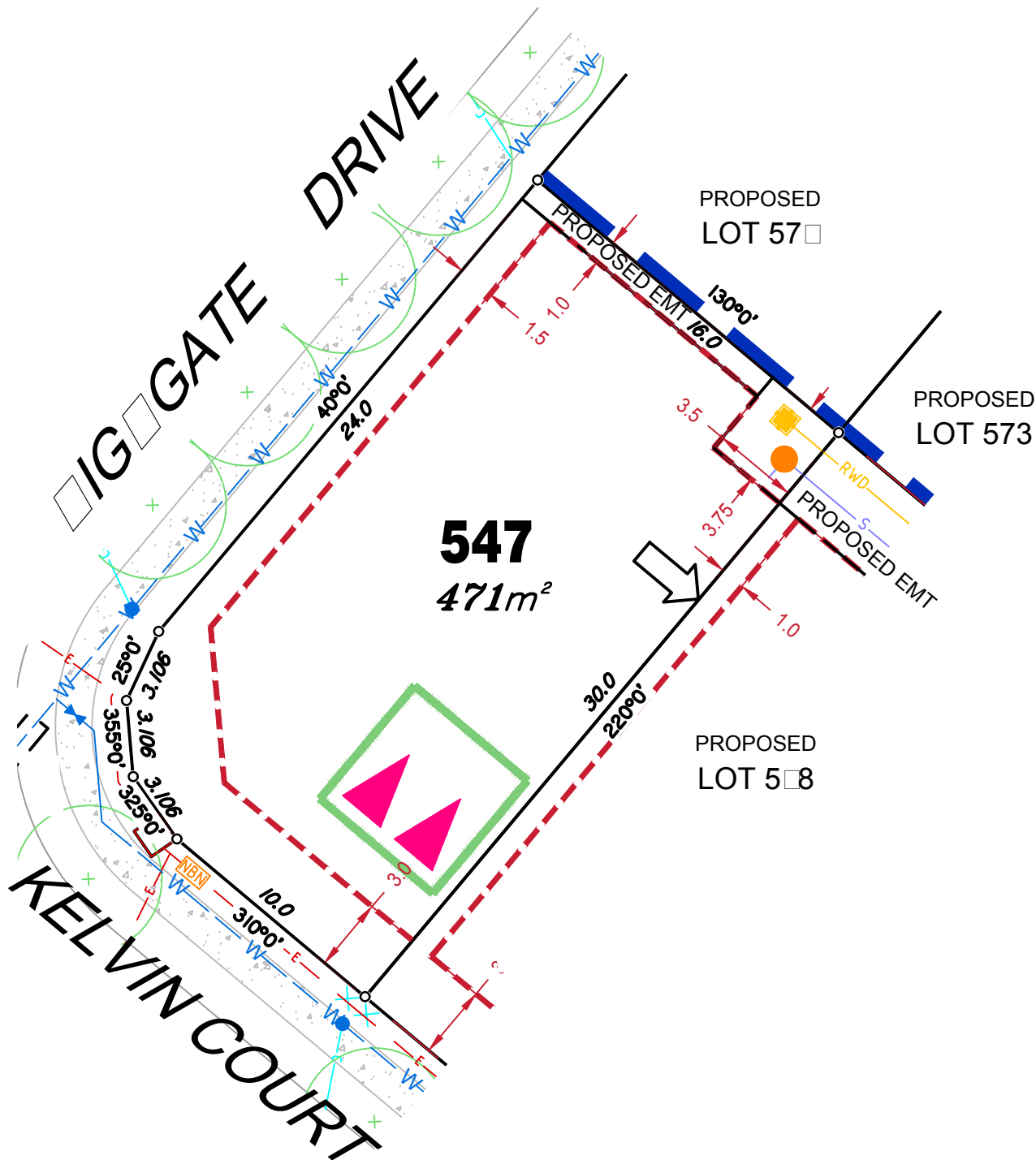
Location of sewer, roofwater, stormwater, water reticulation and electricity lines, manholes and pits are those shown on engineering design drawings, supplied by Bradlees Meinhardt, and may differ from the as-constructed location.

Plan of Development information Supplied by RPS Group PLC.

Copyright © Queensland Surveying Pty Ltd a Veris Company  
Dec 2017.







## LEGEND

|   |  |
|---|--|
| Rock Retaining Wall shown as:-                                  |  |
| Sleeper Retaining Wall shown as:-                               |  |
| Landscape Retaining Wall shown as:-                             |  |
| Sewer line  |  |
| Sewer Manhole   |  |
| Roofwater Drainage line and Catch Pit                           |  |
| Stormwater Drainage Line  |  |
| Stormwater Manhole  |  |
| Stormwater Pit  |  |
| Water Main  |  |
| Water Conduit   |  |
| Water Service Point of Entry                                    |  |
| Underground Electricity, Street Light, Electricity Pillar & NBN |  |
| Developer Fencing   |  |
| Concrete Pathway  |  |
| Landscape Street Tree   |  |
| Zero Setback Building Line                                      |  |
| Indicative Building Envelope                                    |  |
| Proposed Services Easement                                      |  |
| Indicative Parking Access Location                              |  |

## ADDITIONAL NOTES:

Allotments used as Multiple Residential Allotments in accordance with the approved Plan of Development may have a reduced primary road setback to 3.0metres as noted on the Plan of Development Table.

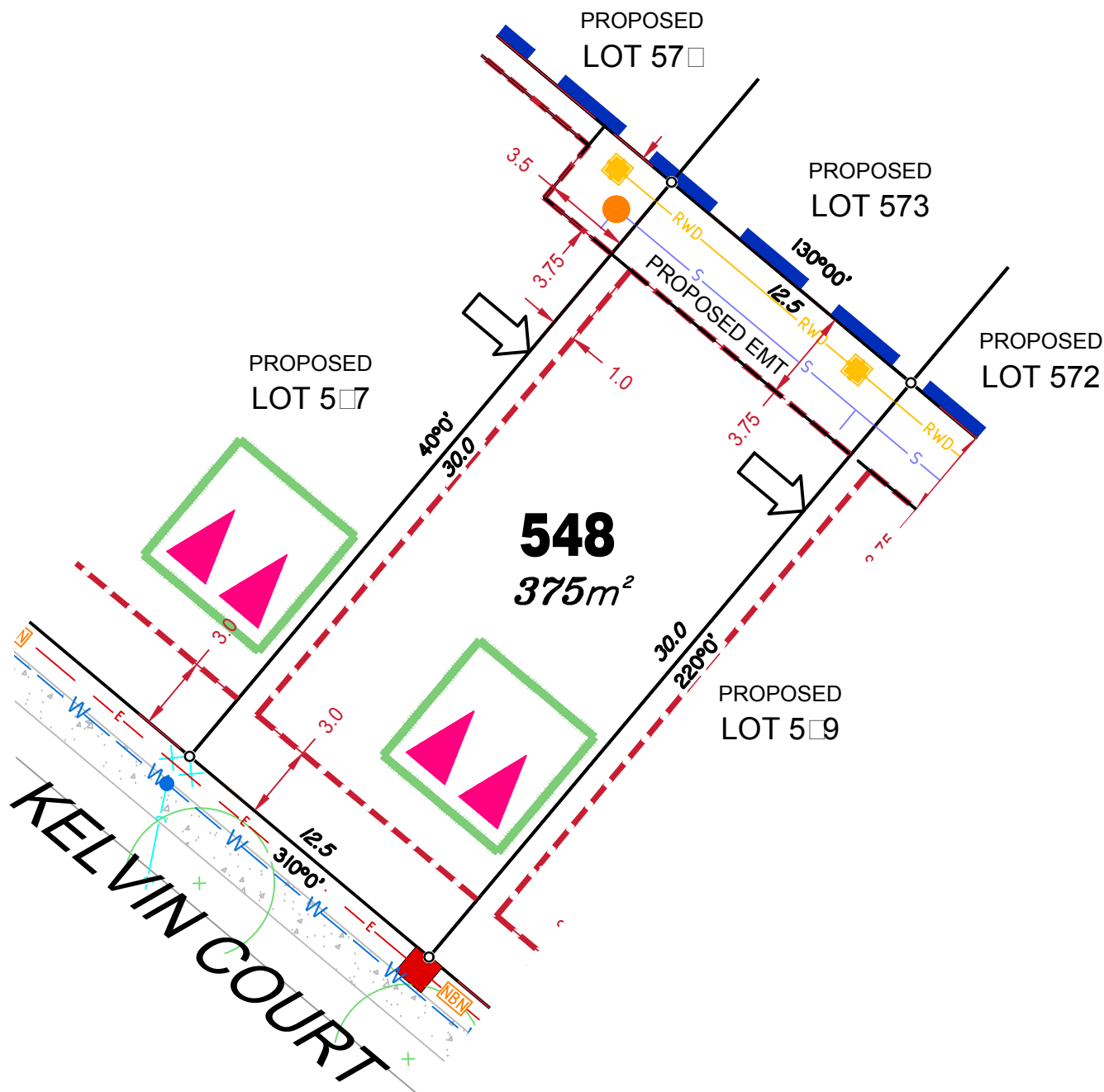
Compaction of any fill material placed on this site shall be completed to level one inspection and testing services in accordance with AS3798-2007.

Location of sewer, roofwater, stormwater, water reticulation and electricity lines, manholes and pits are those shown on engineering design drawings, supplied by Bradlees Meinhardt, and may differ from the as-constructed location.

Plan of Development information Supplied by RPS Group PLC.

Copyright © Veris Australia Pty Ltd  
October 2018.





## LEGEND

|   |  |
|---|--|
| Rock Retaining Wall shown as:-                                  |  |
| Sleeper Retaining Wall shown as:-                               |  |
| Landscape Retaining Wall shown as:-                             |  |
| Sewer line  |  |
| Sewer Manhole   |  |
| Roofwater Drainage line and Catch Pit                           |  |
| Stormwater Drainage Line  |  |
| Stormwater Manhole  |  |
| Stormwater Pit  |  |
| Water Main  |  |
| Water Conduit   |  |
| Water Service Point of Entry                                    |  |
| Underground Electricity, Street Light, Electricity Pillar & NBN |  |
| Developer Fencing   |  |
| Concrete Pathway  |  |
| Landscape Street Tree   |  |
| Zero Setback Building Line                                      |  |
| Indicative Building Envelope                                    |  |
| Proposed Services Easement                                      |  |
| Indicative Parking Access Location                              |  |

### ADDITIONAL NOTES:

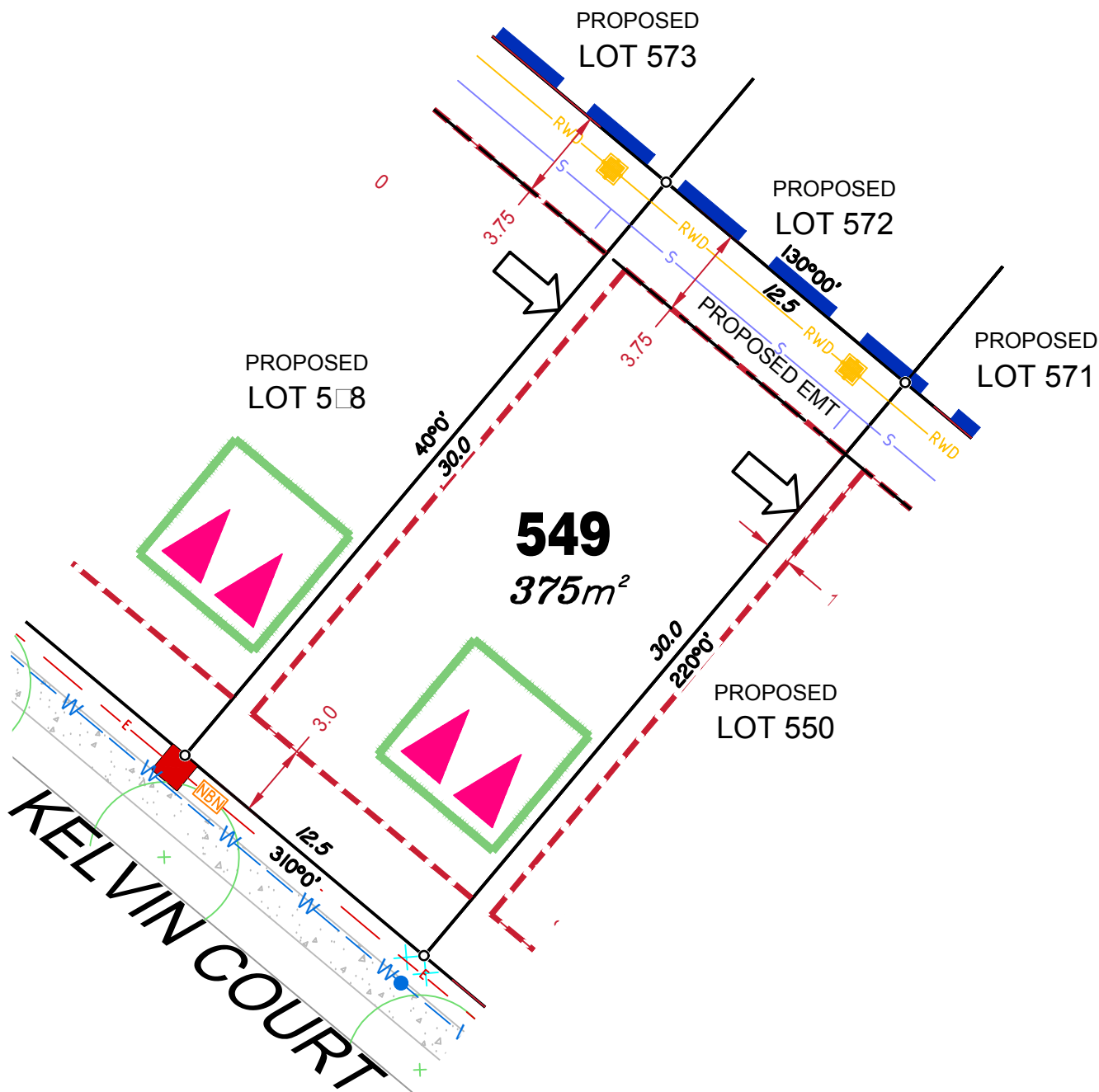
Allotments used as Multiple Residential Allotments in accordance with the approved Plan of Development may have a reduced primary road setback to 3.0metres as noted on the Plan of Development Table.

Compaction of any fill material placed on this site shall be completed to level one inspection and testing services in accordance with AS3798-2007.

Location of sewer, roofwater, stormwater, water reticulation and electricity lines, manholes and pits are those shown on engineering design drawings, supplied by Bradlees Meinhardt, and may differ from the as-constructed location.

Plan of Development information Supplied by RPS Group PLC.

Copyright © Veris Australia Pty Ltd  
October 2018.



## LEGEND

|   |  |
|---|--|
| Rock Retaining Wall shown as:-                                  |  |
| Sleeper Retaining Wall shown as:-                               |  |
| Landscape Retaining Wall shown as:-                             |  |
| Sewer line  |  |
| Sewer Manhole   |  |
| Roofwater Drainage line and Catch Pit                           |  |
| Stormwater Drainage Line  |  |
| Stormwater Manhole  |  |
| Stormwater Pit  |  |
| Water Main  |  |
| Water Conduit   |  |
| Water Service Point of Entry                                    |  |
| Underground Electricity, Street Light, Electricity Pillar & NBN |  |
| Developer Fencing   |  |
| Concrete Pathway  |  |
| Landscape Street Tree   |  |
| Zero Setback Building Line                                      |  |
| Indicative Building Envelope                                    |  |
| Proposed Services Easement                                      |  |
| Indicative Parking Access Location                              |  |

### ADDITIONAL NOTES:

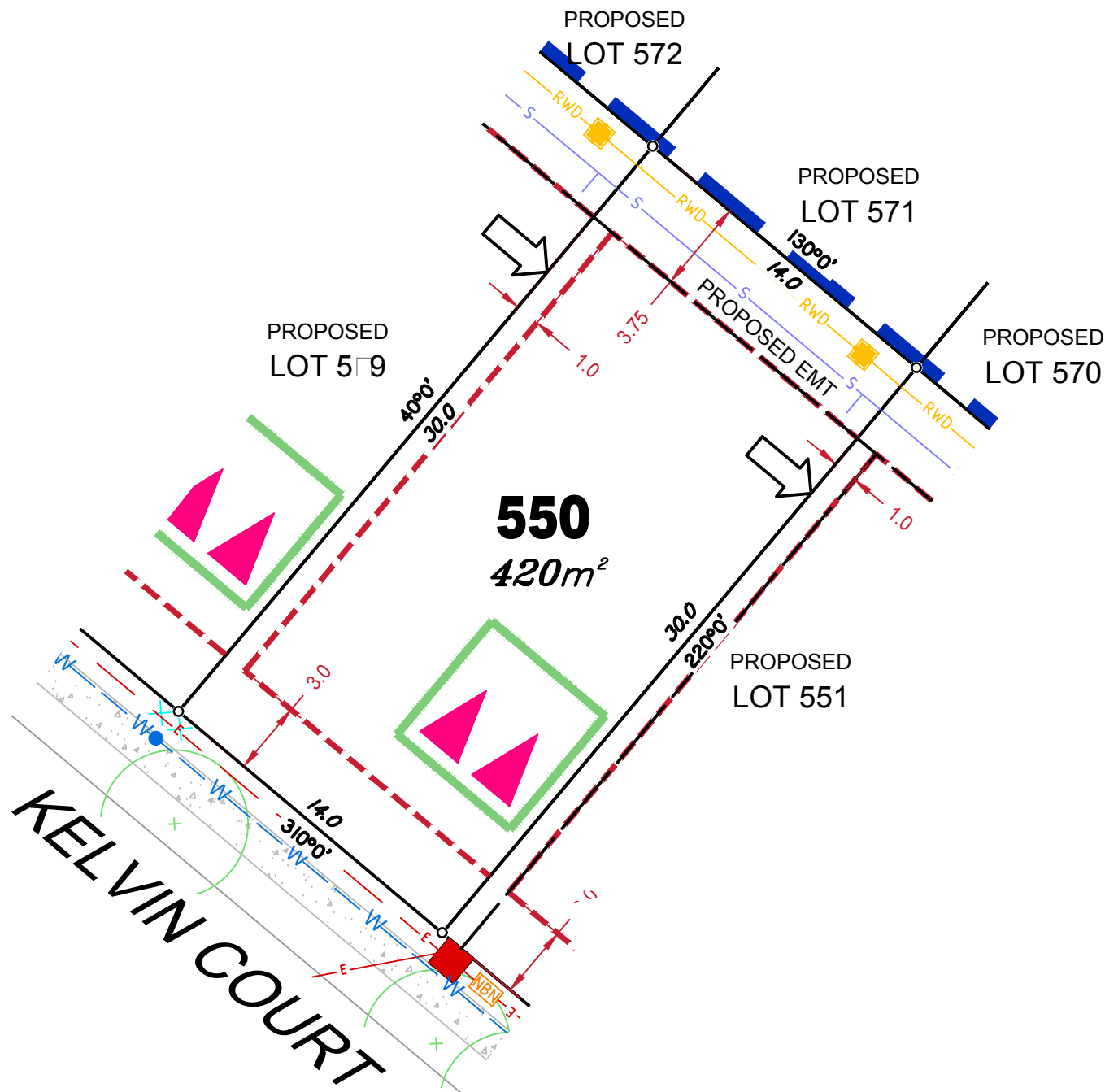
Allotments used as Multiple Residential Allotments in accordance with the approved Plan of Development may have a reduced primary road setback to 3.0metres as noted on the Plan of Development Table.

Compaction of any fill material placed on this site shall be completed to level one inspection and testing services in accordance with AS3798-2007.

Location of sewer, roofwater, stormwater, water reticulation and electricity lines, manholes and pits are those shown on engineering design drawings, supplied by Bradlees Meinhardt, and may differ from the as-constructed location.

Plan of Development information Supplied by RPS Group PLC.

Copyright © Veris Australia Pty Ltd  
October 2018.



## LEGEND

|   |  |
|---|--|
| Rock Retaining Wall shown as:-                                  |  |
| Sleeper Retaining Wall shown as:-                               |  |
| Landscape Retaining Wall shown as:-                             |  |
| Sewer line  |  |
| Sewer Manhole   |  |
| Roofwater Drainage line and Catch Pit                           |  |
| Stormwater Drainage Line  |  |
| Stormwater Manhole  |  |
| Stormwater Pit  |  |
| Water Main  |  |
| Water Conduit   |  |
| Water Service Point of Entry                                    |  |
| Underground Electricity, Street Light, Electricity Pillar & NBN |  |
| Developer Fencing   |  |
| Concrete Pathway  |  |
| Landscape Street Tree   |  |
| Zero Setback Building Line                                      |  |
| Indicative Building Envelope                                    |  |
| Proposed Services Easement                                      |  |
| Indicative Parking Access Location                              |  |

## ADDITIONAL NOTES:

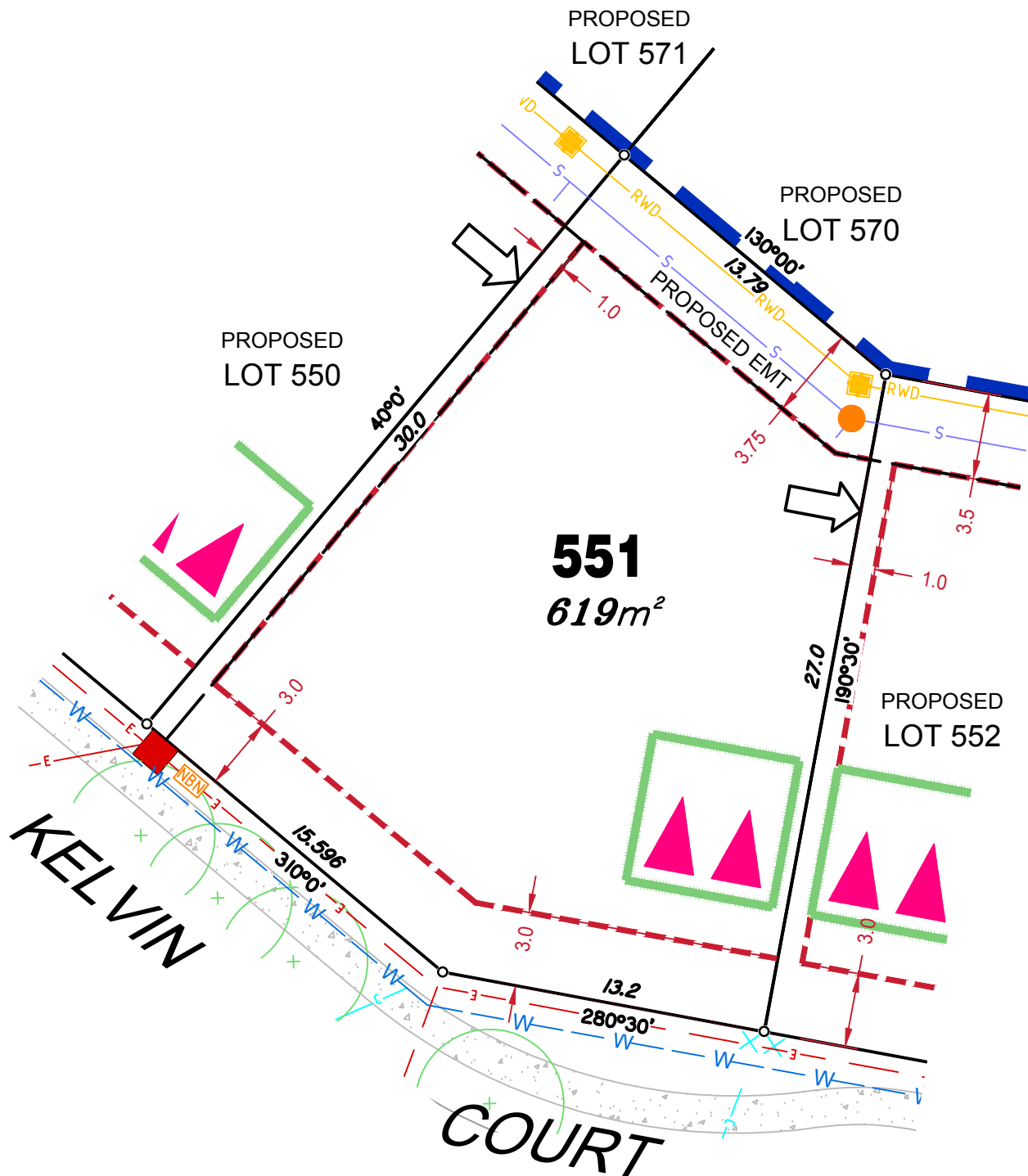
Allotments used as Multiple Residential Allotments in accordance with the approved Plan of Development may have a reduced primary road setback to 3.0metres as noted on the Plan of Development Table.

Compaction of any fill material placed on this site shall be completed to level one inspection and testing services in accordance with AS3798-2007.

Location of sewer, roofwater, stormwater, water reticulation and electricity lines, manholes and pits are those shown on engineering design drawings, supplied by Bradlees Meinhardt, and may differ from the as-constructed location.

Plan of Development information Supplied by RPS Group PLC.

Copyright © Veris Australia Pty Ltd  
October 2018.



## LEGEND

|   |  |
|---|--|
| Rock Retaining Wall shown as:-                                  |  |
| Sleeper Retaining Wall shown as:-                               |  |
| Landscape Retaining Wall shown as:-                             |  |
| Sewer line  |  |
| Sewer Manhole   |  |
| Roofwater Drainage line and Catch Pit                           |  |
| Stormwater Drainage Line  |  |
| Stormwater Manhole  |  |
| Stormwater Pit  |  |
| Water Main  |  |
| Water Conduit   |  |
| Water Service Point of Entry                                    |  |
| Underground Electricity, Street Light, Electricity Pillar & NBN |  |
| Developer Fencing   |  |
| Concrete Pathway  |  |
| Landscape Street Tree   |  |
| Zero Setback Building Line                                      |  |
| Indicative Building Envelope                                    |  |
| Proposed Services Easement                                      |  |
| Indicative Parking Access Location                              |  |

### ADDITIONAL NOTES:

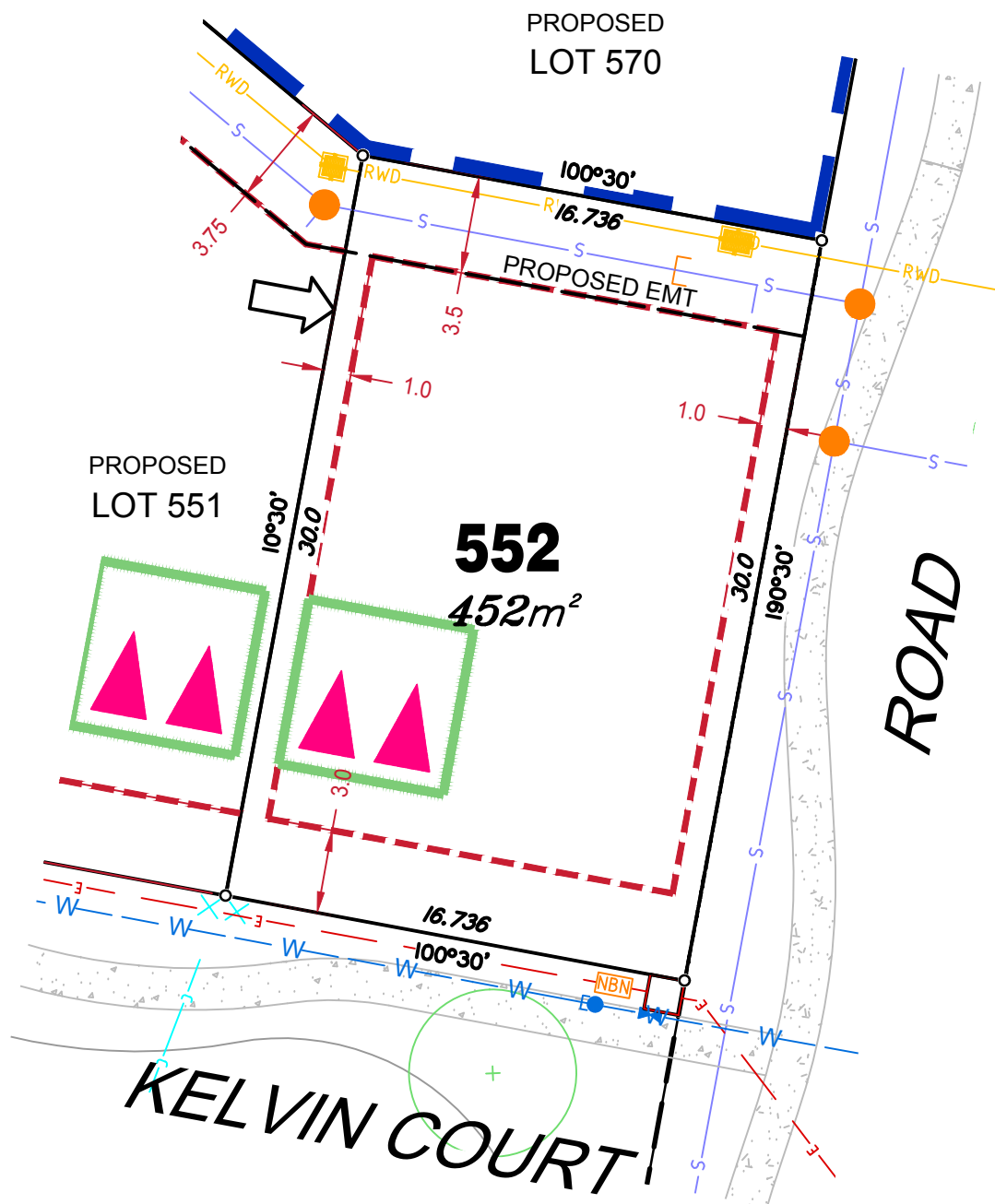
Allotments used as Multiple Residential Allotments in accordance with the approved Plan of Development may have a reduced primary road setback to 3.0metres as noted on the Plan of Development Table.

Compaction of any fill material placed on this site shall be completed to level one inspection and testing services in accordance with AS3798-2007.

Location of sewer, roofwater, stormwater, water reticulation and electricity lines, manholes and pits are those shown on engineering design drawings, supplied by Bradlees Meinhardt, and may differ from the as-constructed location.

Plan of Development information Supplied by RPS Group PLC.

Copyright © Veris Australia Pty Ltd  
October 2018.



## LEGEND

Rock Retaining Wall shown as:-



Sleeper Retaining Wall shown as:-



Landscape Retaining Wall shown as:-



Sewer line



Sewer Manhole



Roofwater Drainage line and Catch Pit



Stormwater Drainage Line



Stormwater Manhole



Stormwater Pit



Water Main



Water Conduit



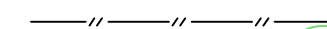
Water Service Point of Entry



Underground Electricity, Street Light, Electricity Pillar & NBN



Developer Fencing



Concrete Pathway



Landscape Street Tree



Zero Setback Building Line



Indicative Building Envelope



Proposed Services Easement



Indicative Parking Access Location



## ADDITIONAL NOTES:

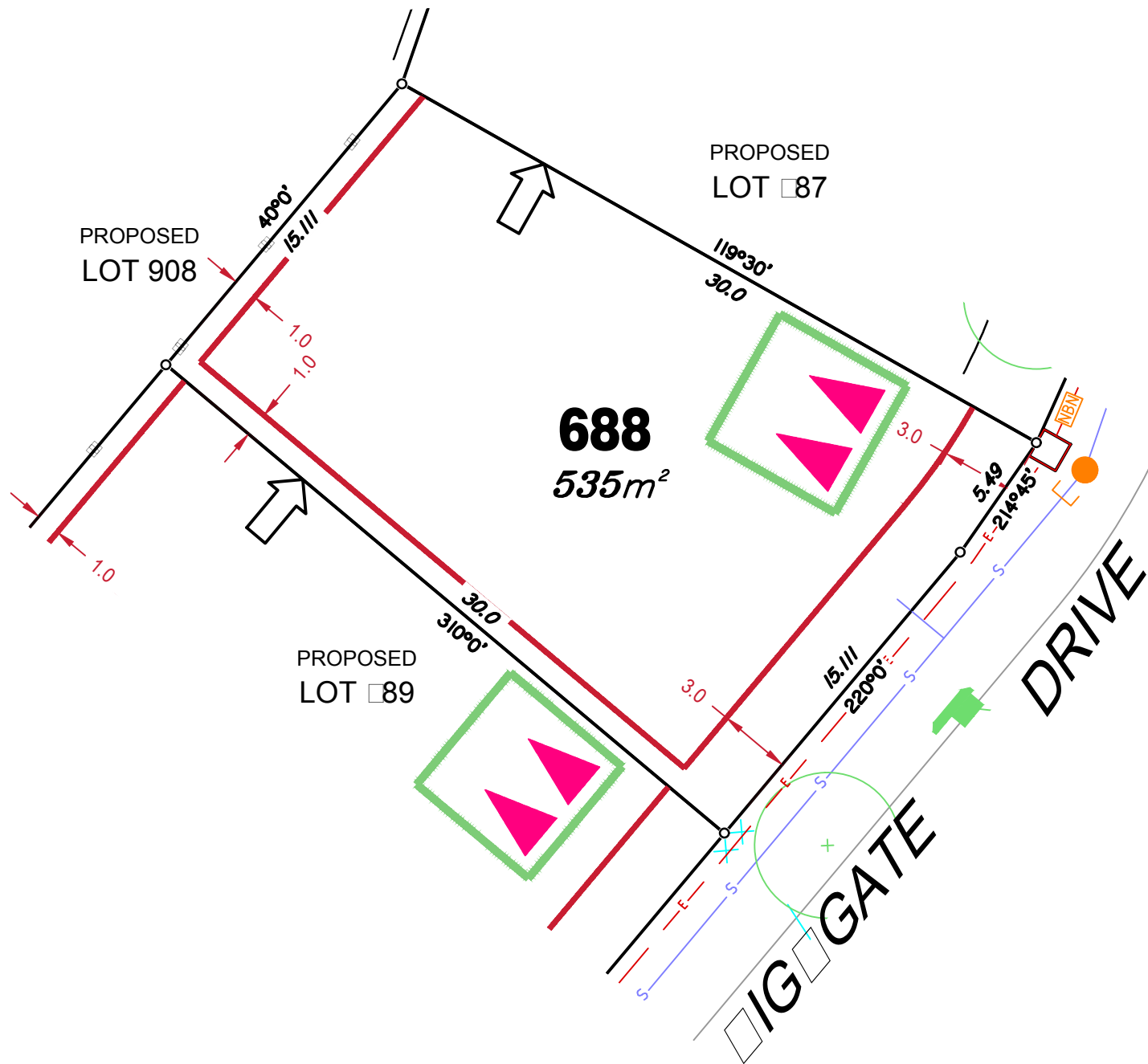
Allotments used as Multiple Residential Allotments in accordance with the approved Plan of Development may have a reduced primary road setback to 3.0metres as noted on the Plan of Development Table.

Compaction of any fill material placed on this site shall be completed to level one inspection and testing services in accordance with AS3798-2007.

Location of sewer, roofwater, stormwater, water reticulation and electricity lines, manholes and pits are those shown on engineering design drawings, supplied by Bradlees Meinhardt, and may differ from the as-constructed location.

Plan of Development information Supplied by RPS Group PLC.

Copyright © Veris Australia Pty Ltd  
October 2018.



#### ADDITIONAL NOTES:

Allotments used as Multiple Residential Allotments in accordance with the approved Plan of Development may have a reduced primary road setback to 3.0metres as noted on the Plan of Development Table.

Compaction of any fill material placed on this site shall be completed to level one inspection and testing services in accordance with AS3798-2007.

Location of sewer, roofwater, stormwater, water reticulation and electricity lines, manholes and pits are those shown on engineering design drawings, supplied by Bradlees Meinhardt, and may differ from the as-constructed location.

Plan of Development information Supplied by RPS Group PLC.

Copyright © Queensland Surveying Pty Ltd a Veris Company  
Dec 2017.

#### LEGEND

Retaining Wall shown as:-

Sewer line

Sewer Manhole

Roofwater Drainage line and Catch Pit

Stormwater Drainage Line

Stormwater Manhole

Stormwater Pit

Water Main

Water Conduit

Water Service Point of Entry

Underground Electricity, Street Light, Electricity Pillar & NBN

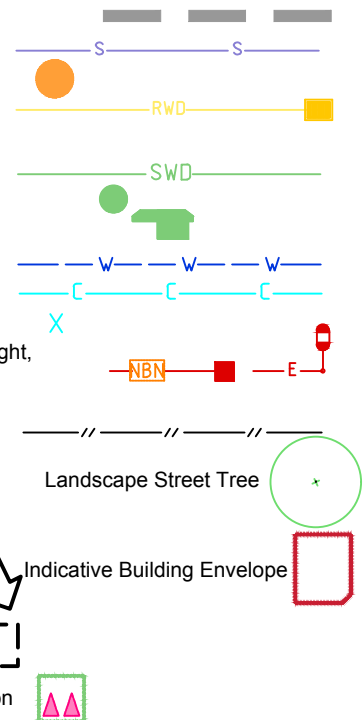
Developer Fencing

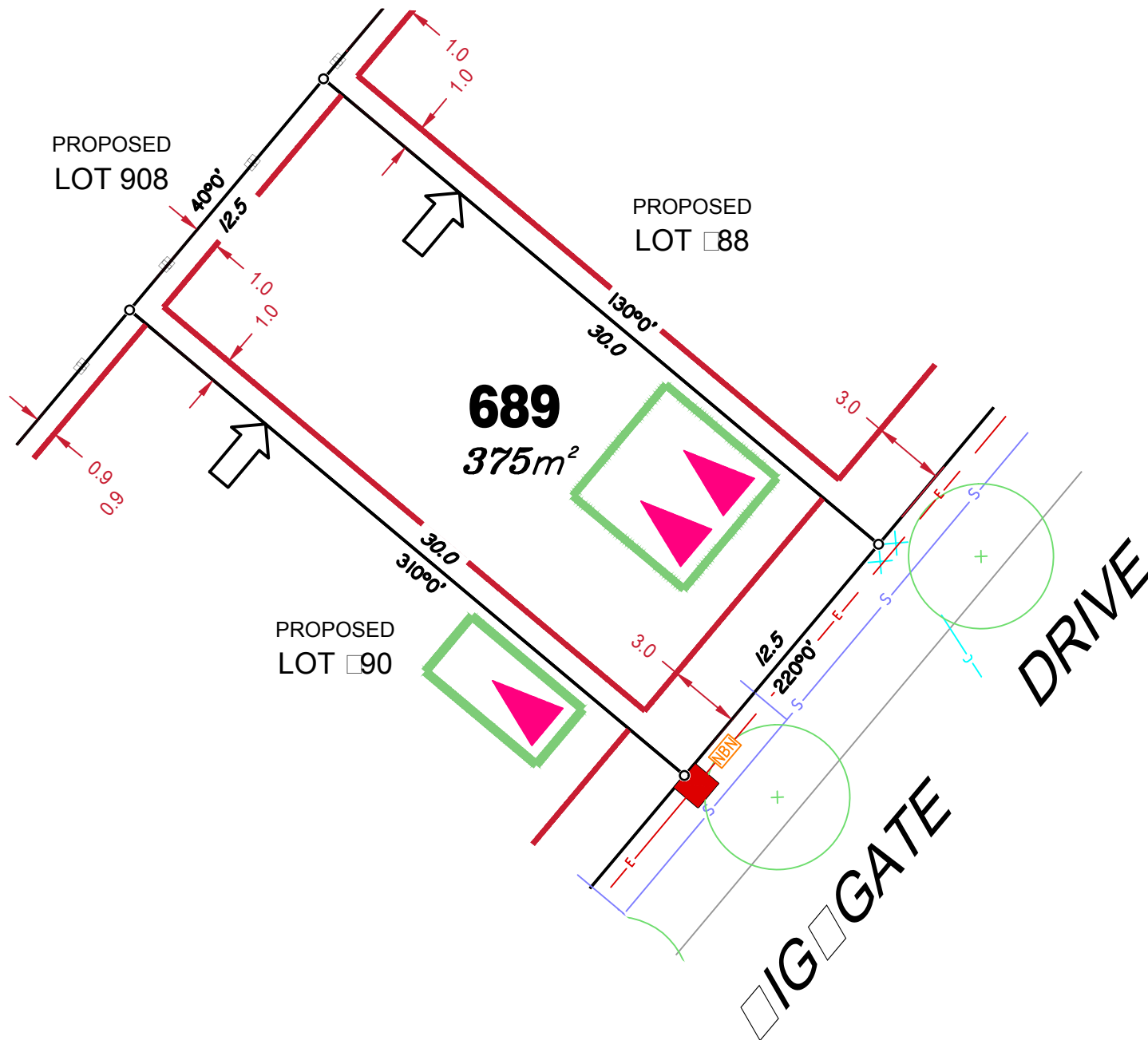
Concrete Pathway

Zero Setback Building Line

Proposed Services Easement

Indicative Parking Access Location





## LEGEND

Retaining Wall shown as:-

Sewer line

Sewer Manhole

Roofwater Drainage line and  
Catch Pit

Stormwater Drainage Line

Stormwater Manhole

Stormwater Pit

Water Main

Water Conduit

Water Service Point of Entry

Underground Electricity, Street Light,  
Electricity Pillar & NBN

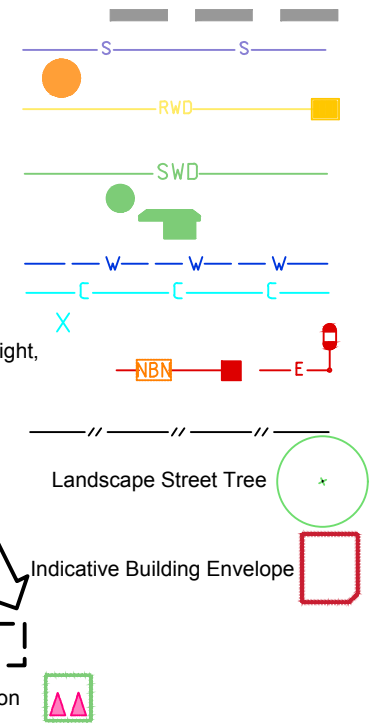
Developer Fencing

Concrete Pathway

Zero Setback Building Line

Proposed Services Easement

Indicative Parking Access Location



## ADDITIONAL NOTES:

Allotments used as Multiple Residential Allotments in accordance with the approved Plan of Development may have a reduced primary road setback to 3.0metres as noted on the Plan of Development Table.

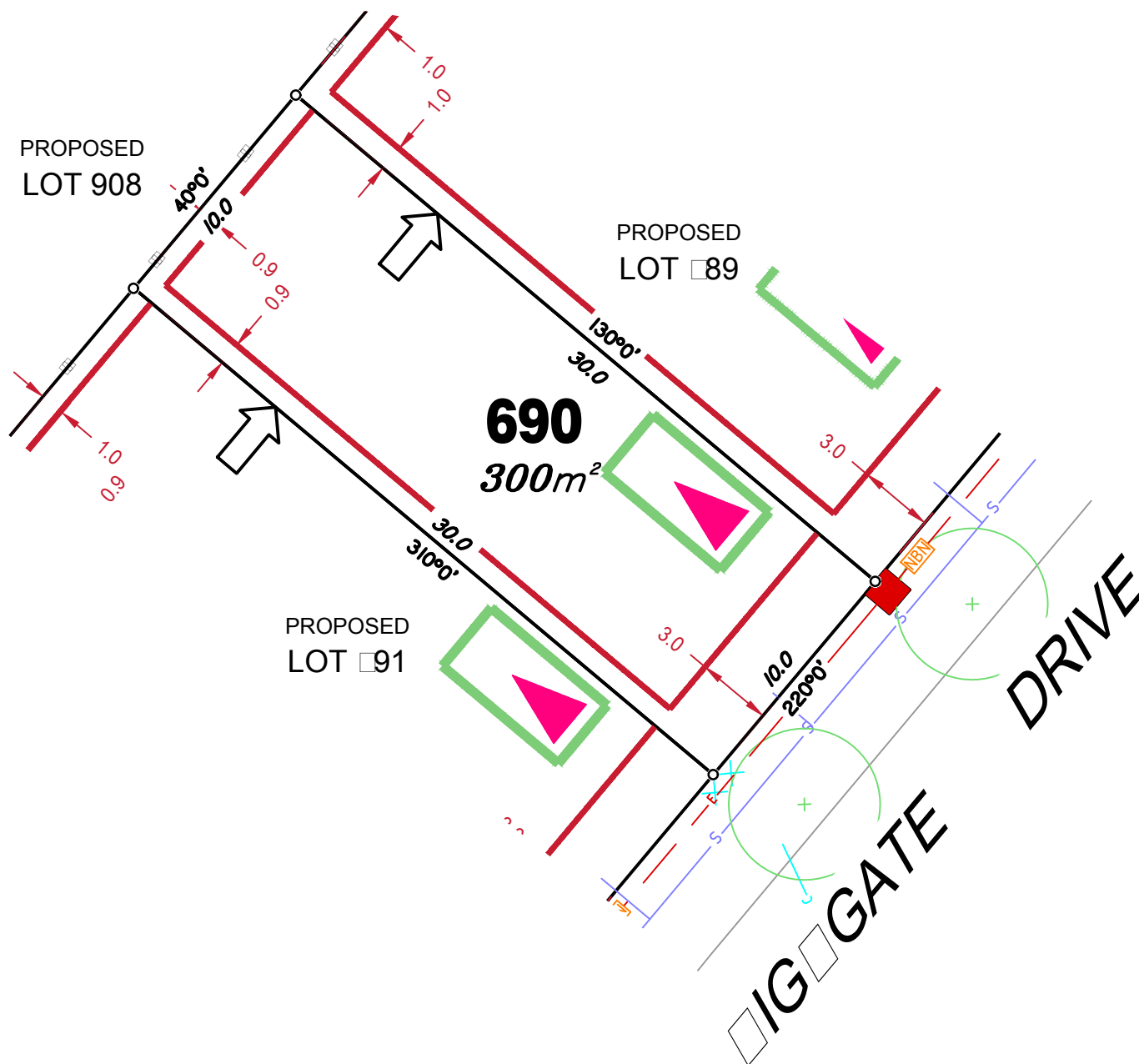
Compaction of any fill material placed on this site shall be completed to level one inspection and testing services in accordance with AS3798-2007.

Location of sewer, roofwater, stormwater, water reticulation and electricity lines, manholes and pits are those shown on engineering design drawings, supplied by Bradlees Meinhardt, and may differ from the as-constructed location.

Plan of Development information Supplied by RPS Group PLC.

Copyright © Queensland Surveying Pty Ltd a Veris Company  
Dec 2017.





## LEGEND

Retaining Wall shown as:-

Sewer line

Sewer Manhole

Roofwater Drainage line and  
Catch Pit

Stormwater Drainage Line

Stormwater Manhole

Stormwater Pit

Water Main

Water Conduit

Water Service Point of Entry

Underground Electricity, Street Light,  
Electricity Pillar & NBN

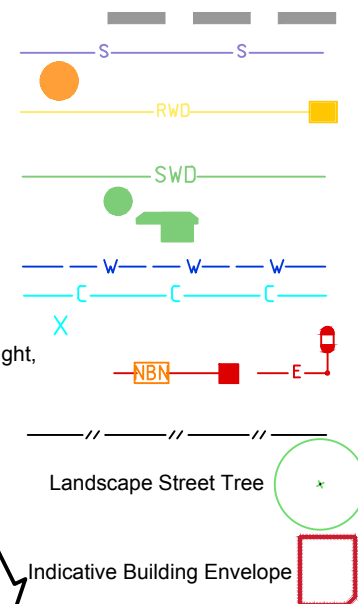
Developer Fencing

Concrete Pathway

Zero Setback Building Line

Proposed Services Easement

Indicative Parking Access Location



## ADDITIONAL NOTES:

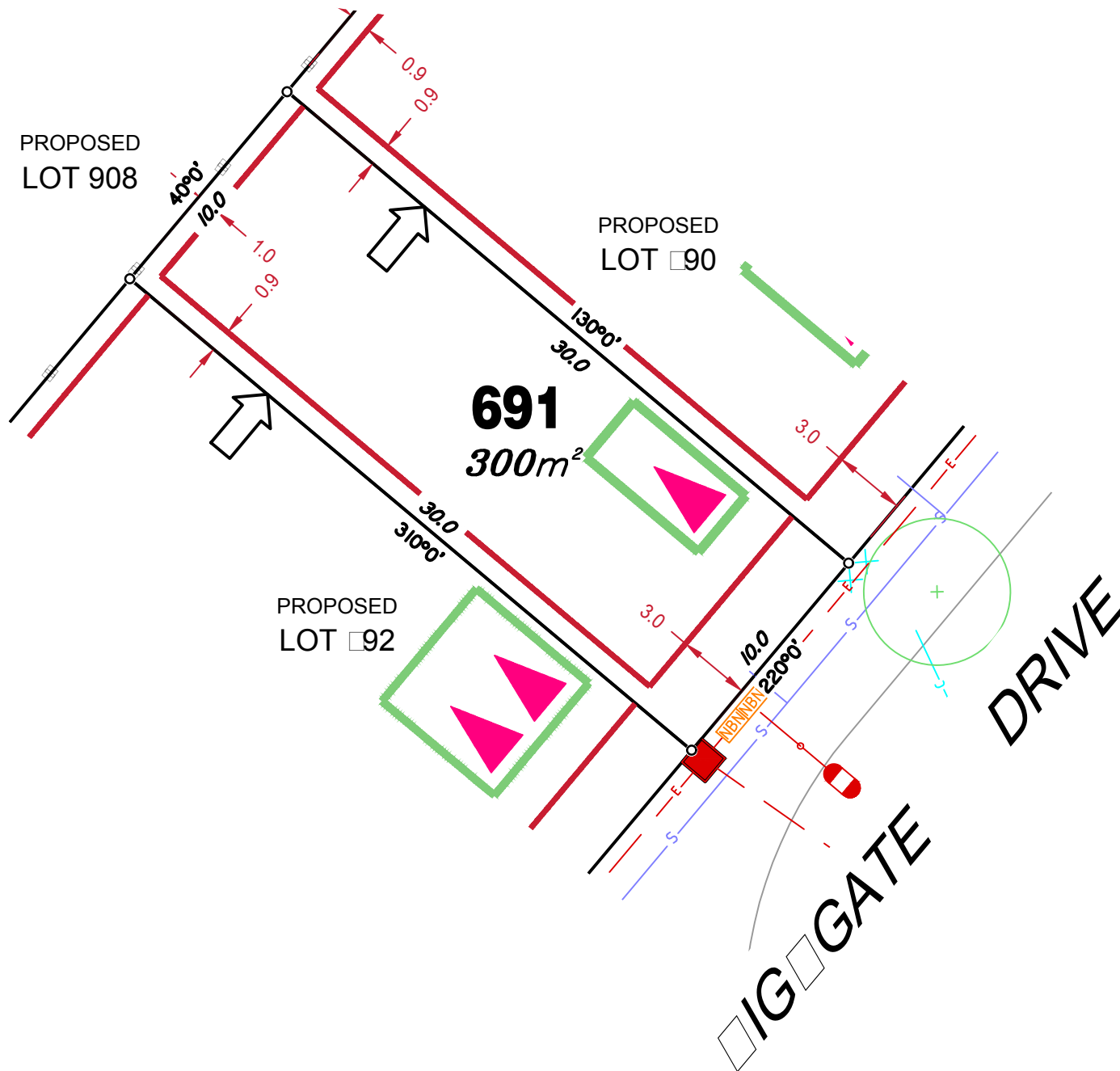
Allotments used as Multiple Residential Allotments in accordance with the approved Plan of Development may have a reduced primary road setback to 3.0metres as noted on the Plan of Development Table.

Compaction of any fill material placed on this site shall be completed to level one inspection and testing services in accordance with AS3798-2007.

Location of sewer, roofwater, stormwater, water reticulation and electricity lines, manholes and pits are those shown on engineering design drawings, supplied by Bradlees Meinhardt, and may differ from the as-constructed location.

Plan of Development information Supplied by RPS Group PLC.

Copyright © Queensland Surveying Pty Ltd a Veris Company  
Dec 2017.



## LEGEND

Retaining Wall shown as:-

Sewer line

Sewer Manhole

Roofwater Drainage line and  
Catch Pit

Stormwater Drainage Line

Stormwater Manhole

Stormwater Pit

Water Main

Water Conduit

Water Service Point of Entry

Underground Electricity, Street Light,

Electricity Pillar & NBN

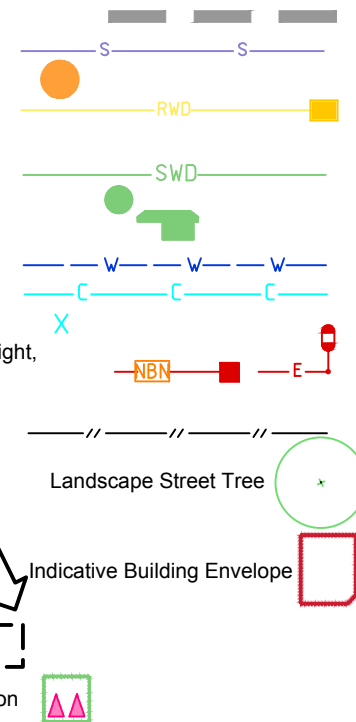
Developer Fencing

Concrete Pathway

Zero Setback Building Line

Proposed Services Easement

Indicative Parking Access Location



## ADDITIONAL NOTES:

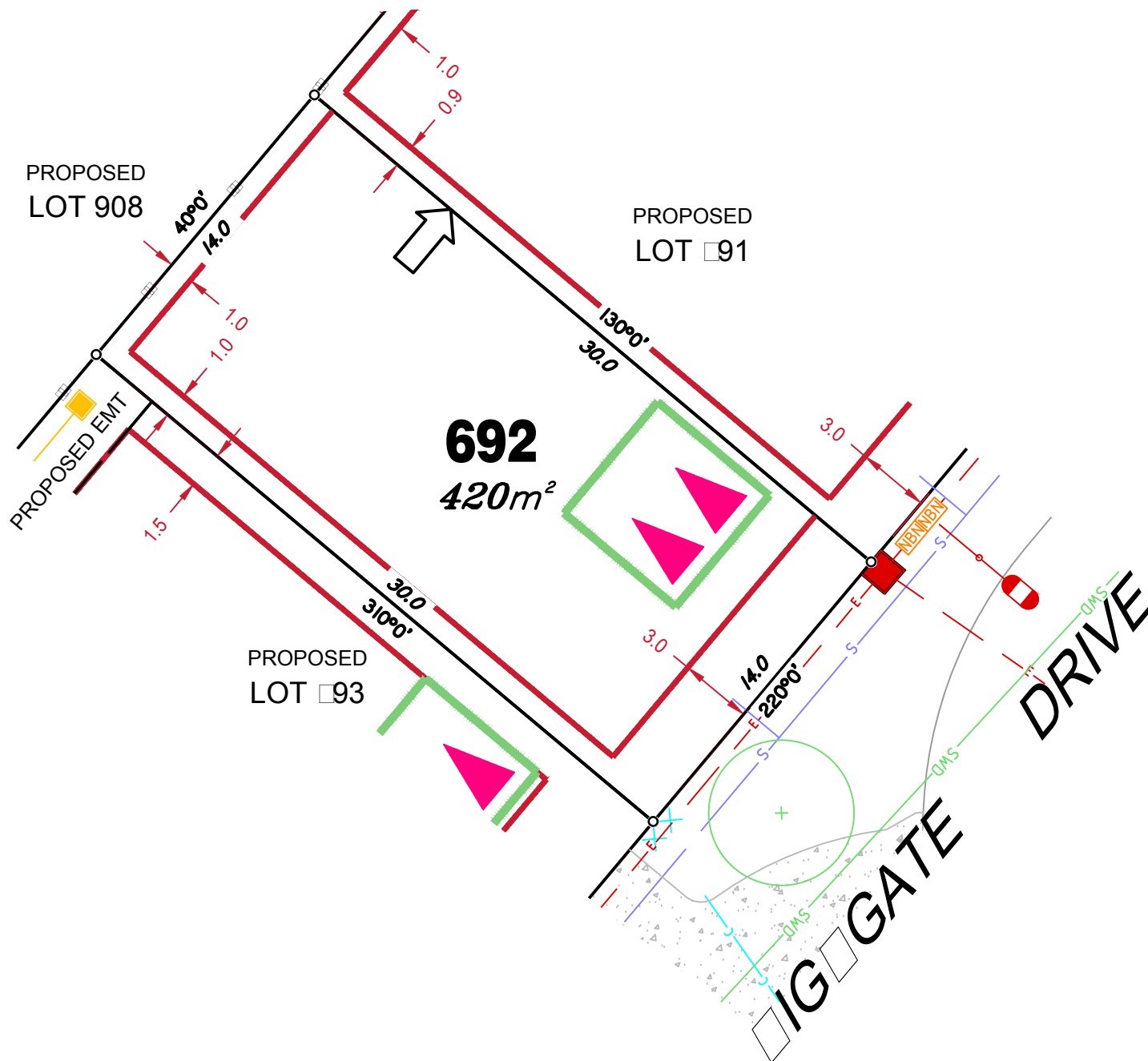
Allotments used as Multiple Residential Allotments in accordance with the approved Plan of Development may have a reduced primary road setback to 3.0metres as noted on the Plan of Development Table.

Compaction of any fill material placed on this site shall be completed to level one inspection and testing services in accordance with AS3798-2007.

Location of sewer, roofwater, stormwater, water reticulation and electricity lines, manholes and pits are those shown on engineering design drawings, supplied by Bradlees Meinhardt, and may differ from the as-constructed location.

Plan of Development information Supplied by RPS Group PLC.

Copyright © Queensland Surveying Pty Ltd a Veris Company  
Dec 2017.



## LEGEND

Retaining Wall shown as:-

Sewer line

Sewer Manhole

Roofwater Drainage line and  
Catch Pit

Stormwater Drainage Line

Stormwater Manhole

Stormwater Pit

Water Main

Water Conduit

Water Service Point of Entry

Underground Electricity, Street Light,  
Electricity Pillar & NBN

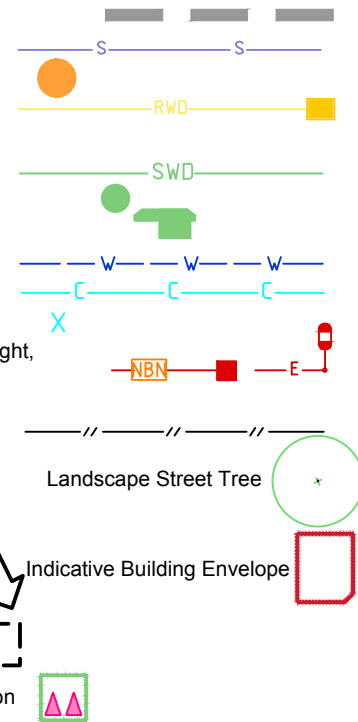
Developer Fencing

Concrete Pathway

Zero Setback Building Line

Proposed Services Easement

Indicative Parking Access Location



## ADDITIONAL NOTES:

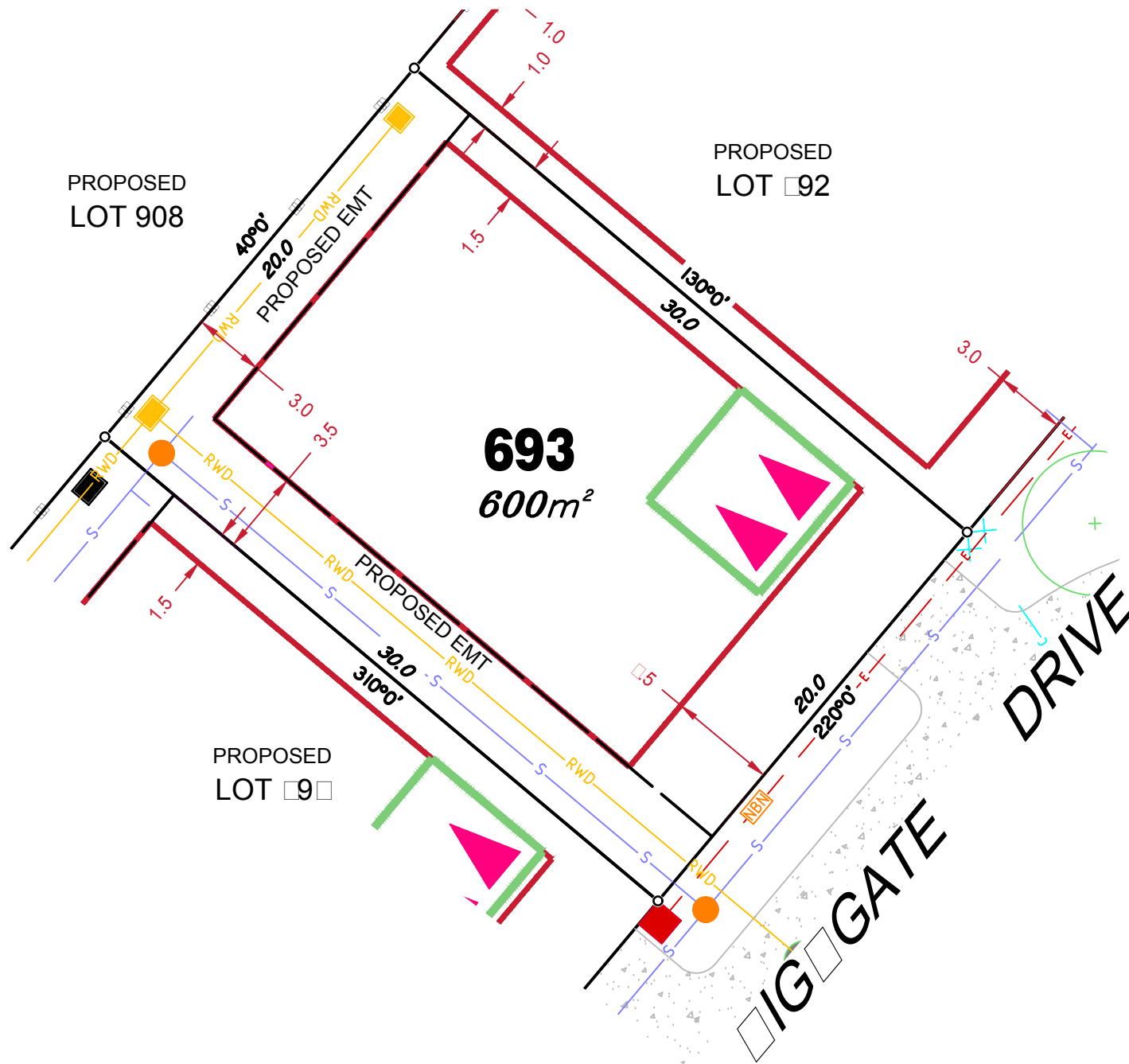
Allotments used as Multiple Residential Allotments in accordance with the approved Plan of Development may have a reduced primary road setback to 3.0metres as noted on the Plan of Development Table.

Compaction of any fill material placed on this site shall be completed to level one inspection and testing services in accordance with AS3798-2007.

Location of sewer, roofwater, stormwater, water reticulation and electricity lines, manholes and pits are those shown on engineering design drawings, supplied by Bradlees Meinhardt, and may differ from the as-constructed location.

Plan of Development information Supplied by RPS Group PLC.

Copyright © Queensland Surveying Pty Ltd a Veris Company  
Dec 2017.



## ADDITIONAL NOTES:

Allotments used as Multiple Residential Allotments in accordance with the approved Plan of Development may have a reduced primary road setback to 3.0metres as noted on the Plan of Development Table.

Compaction of any fill material placed on this site shall be completed to level one inspection and testing services in accordance with AS3798-2007.

Location of sewer, roofwater, stormwater, water reticulation and electricity lines, manholes and pits are those shown on engineering design drawings, supplied by Bradlees Meinhardt, and may differ from the as-constructed location.

Plan of Development information Supplied by RPS Group PLC.

Copyright © Queensland Surveying Pty Ltd a Veris Company  
Dec 2017.

## LEGEND

Retaining Wall shown as:-

Sewer line

Sewer Manhole

Roofwater Drainage line and  
Catch Pit

Stormwater Drainage Line

Stormwater Manhole

Stormwater Pit

Water Main

Water Conduit

Water Service Point of Entry

Underground Electricity, Street Light,

Electricity Pillar & NBN

Developer Fencing

Concrete Pathway

Zero Setback Building Line

Proposed Services Easement

Indicative Parking Access Location

