

LEGEND

Rock Retaining Wall shown as:-	
Sleeper Retaining Wall shown as:-	
Landscape Retaining Wall shown as:-	
Sewer line	
Sewer Manhole	
Roofwater Drainage line and Catch Pit	
Stormwater Drainage Line	
Stormwater Manhole	
Stormwater Pit	
Water Main	
Water Conduit	
Water Service Point of Entry	
Underground Electricity, Street Light, Electricity Pillar & NBN	
Developer Fencing	
Concrete Pathway	
Landscape Street Tree	
Zero Setback Building Line	
Indicative Building Envelope	
Proposed Services Easement	
Indicative Parking Access Location	
Bin Pads	

ADDITIONAL NOTES:

Allotments used as Multiple Residential Allotments in accordance with the approved Plan of Development may have a reduced primary road setback to 3.0metres as noted on the Plan of Development Table.

Compaction of any fill material placed on this site shall be completed to level one inspection and testing services in accordance with AS3798-2007.

Location of sewer, roofwater, stormwater, water reticulation and electricity lines, manholes and pits are those shown on engineering design drawings, supplied by Peak Urban and Meinhardt Urban Pty Ltd, and may differ from the as-constructed location.

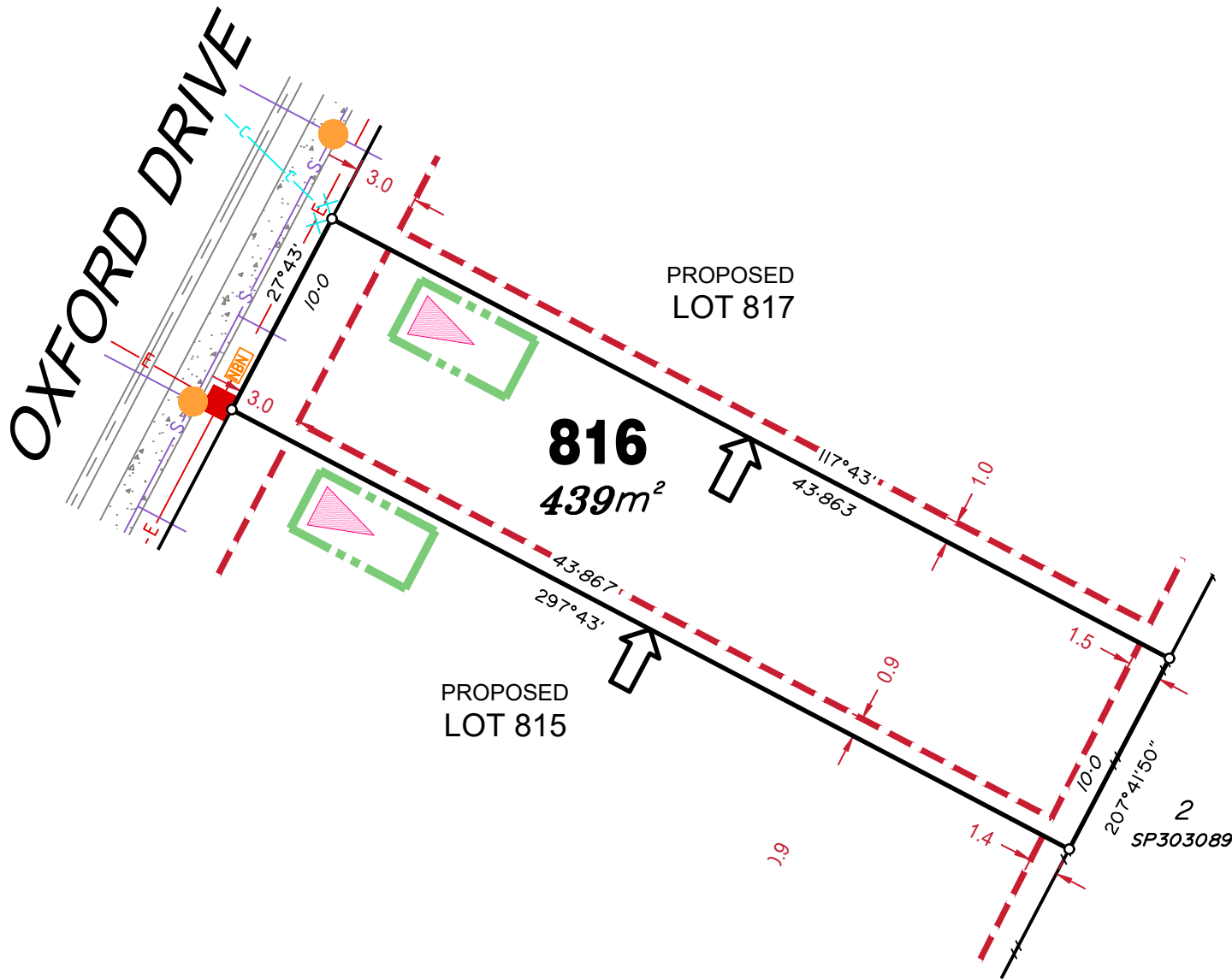
Developer fencing is in accordance with approved Acoustic Report SLR Ref No:620.10512-R09-v5.0.

Plan of Development information Supplied by RPS Group PLC.

Copyright © Veris Australia Pty Ltd
01 September 2021.

Plot Date: 02 Sep, 2021
 Computer File Ref: 30109-Stg2J-SP-D.dwg

OXFORD DRIVE



LEGEND

Rock Retaining Wall shown as:-		
Sleeper Retaining Wall shown as:-		
Landscape Retaining Wall shown as:-		
Sewer line		
Sewer Manhole		
Roofwater Drainage line and Catch Pit		
Stormwater Drainage Line		
Stormwater Manhole		
Stormwater Pit		
Water Main		
Water Conduit		
Water Service Point of Entry		
Underground Electricity, Street Light, Electricity Pillar & NBN		
Developer Fencing		
Concrete Pathway		
Landscape Street Tree		
Zero Setback Building Line		
Indicative Building Envelope		
Proposed Services Easement		
Indicative Parking Access Location		
Bin Pads		

ADDITIONAL NOTES:

Allotments used as Multiple Residential Allotments in accordance with the approved Plan of Development may have a reduced primary road setback to 3.0metres as noted on the Plan of Development Table.

Compaction of any fill material placed on this site shall be completed to level one inspection and testing services in accordance with AS3798-2007.

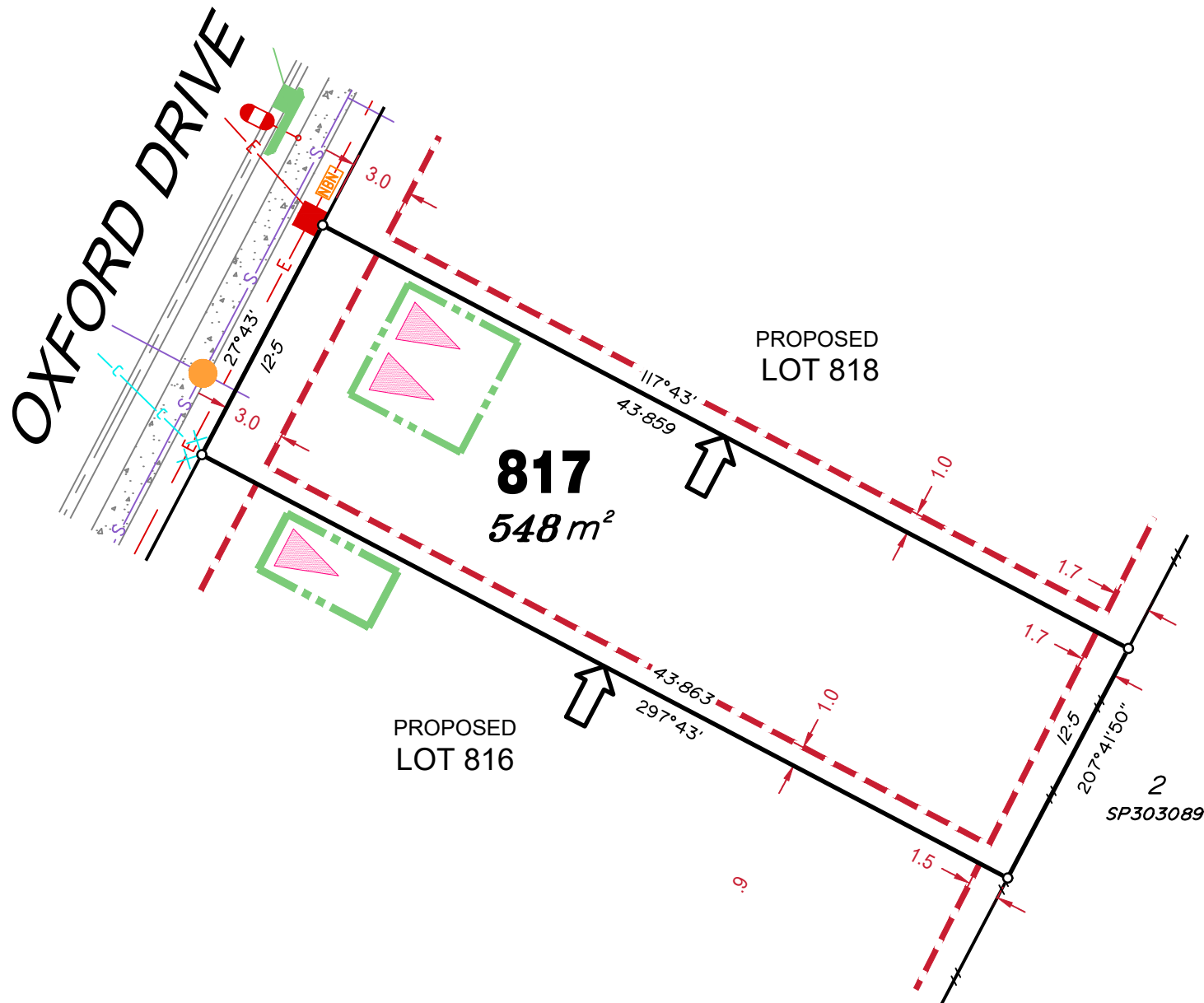
Location of sewer, roofwater, stormwater, water reticulation and electricity lines, manholes and pits are those shown on engineering design drawings, supplied by Peak Urban and Meinhardt Urban Pty Ltd, and may differ from the as-constructed location.

Developer fencing is in accordance with approved Acoustic Report SLR Ref No:620.10512-R09-v5.0.

Plan of Development information Supplied by RPS Group PLC.

Copyright © Veris Australia Pty Ltd
01 September 2021.

Plot Date: 02 Sep, 2021
Computer File Ref: 30109-Stg2J-SP-D.dwg



LEGEND

Rock Retaining Wall shown as:-
 Sleeper Retaining Wall shown as:-
 Landscape Retaining Wall shown as:-

Sewer line
 Sewer Manhole
 Roofwater Drainage line and Catch Pit
 Stormwater Drainage Line
 Stormwater Manhole
 Stormwater Pit
 Water Main
 Water Conduit
 Water Service Point of Entry
 Underground Electricity, Street Light, Electricity Pillar & NBN

Developer Fencing
 Concrete Pathway
 Landscape Street Tree

Zero Setback Building Line
 Proposed Services Easement
 Indicative Parking Access Location

Bin Pads

ADDITIONAL NOTES:

Allotments used as Multiple Residential Allotments in accordance with the approved Plan of Development may have a reduced primary road setback to 3.0metres as noted on the Plan of Development Table.

Compaction of any fill material placed on this site shall be completed to level one inspection and testing services in accordance with AS3798-2007.

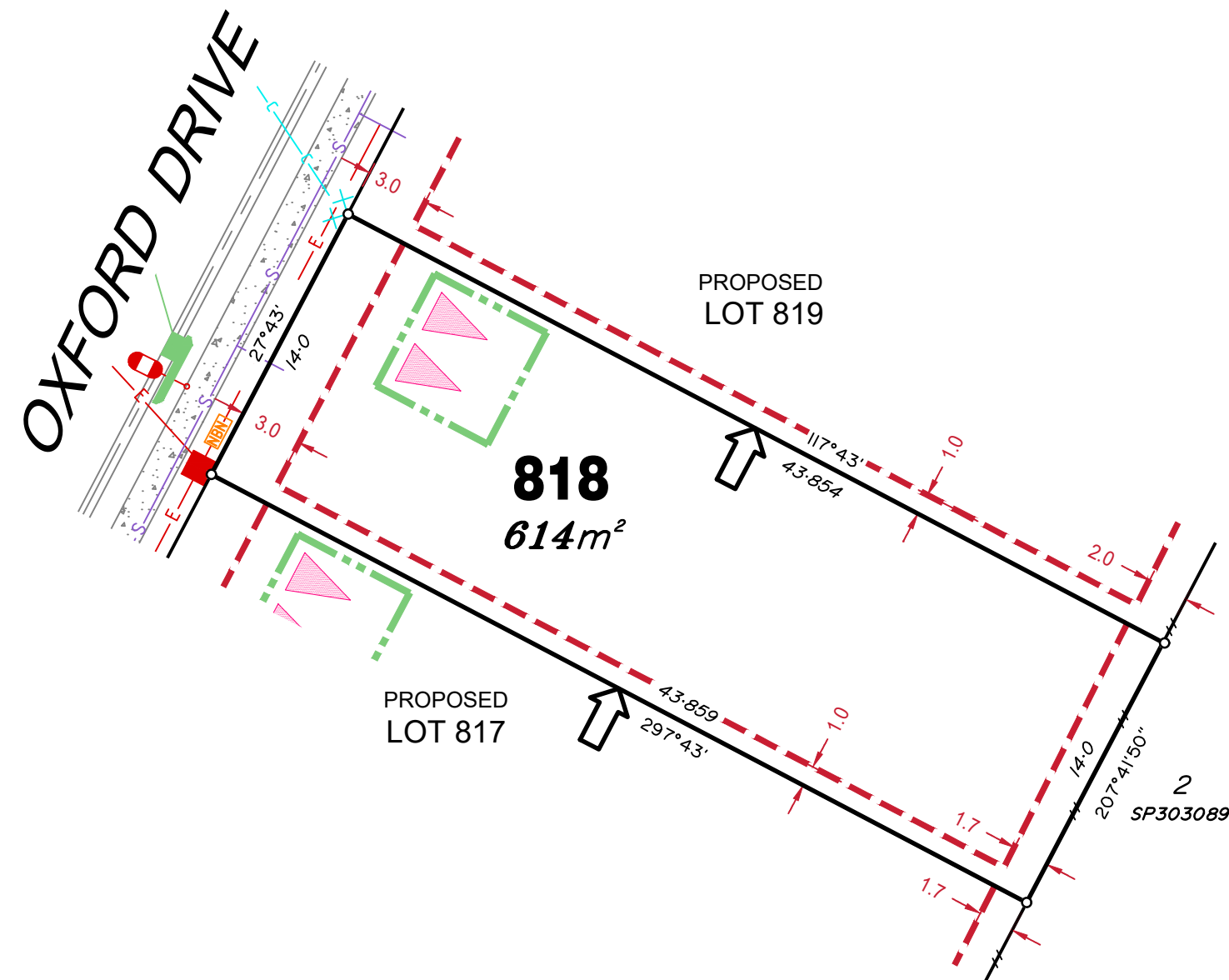
Location of sewer, roofwater, stormwater, water reticulation and electricity lines, manholes and pits are those shown on engineering design drawings, supplied by Peak Urban and Meinhardt Urban Pty Ltd, and may differ from the as-constructed location.

Developer fencing is in accordance with approved Acoustic Report SLR Ref No:620.10512-R09-v5.0.

Plan of Development information Supplied by RPS Group PLC.

Copyright © Veris Australia Pty Ltd
01 September 2021.

Plot Date: 02 Sep, 2021
 Computer File Ref: 30109-Stg2J-SP-D.dwg



LEGEND

Rock Retaining Wall shown as:-	
Sleeper Retaining Wall shown as:-	
Landscape Retaining Wall shown as:-	
Sewer line	
Sewer Manhole	
Roofwater Drainage line and Catch Pit	
Stormwater Drainage Line	
Stormwater Manhole	
Stormwater Pit	
Water Main	
Water Conduit	
Water Service Point of Entry	
Underground Electricity, Street Light, Electricity Pillar & NBN	
Developer Fencing	
Concrete Pathway	
Landscape Street Tree	
Zero Setback Building Line	
Indicative Building Envelope	
Proposed Services Easement	
Indicative Parking Access Location	
Bin Pads	

ADDITIONAL NOTES:

Allotments used as Multiple Residential Allotments in accordance with the approved Plan of Development may have a reduced primary road setback to 3.0metres as noted on the Plan of Development Table.

Compaction of any fill material placed on this site shall be completed to level one inspection and testing services in accordance with AS3798-2007.

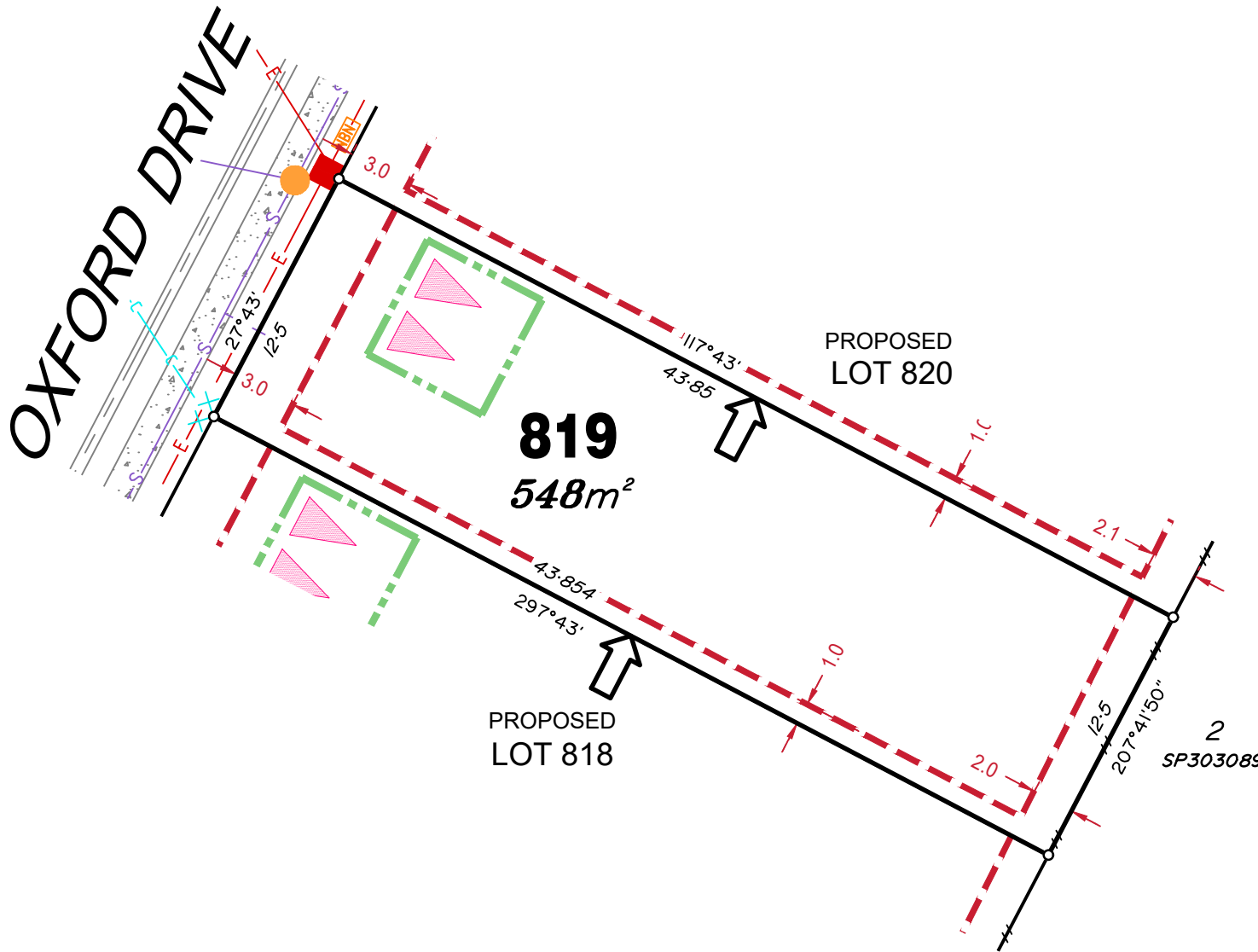
Location of sewer, roofwater, stormwater, water reticulation and electricity lines, manholes and pits are those shown on engineering design drawings, supplied by Peak Urban and Meinhardt Urban Pty Ltd, and may differ from the as-constructed location.

Developer fencing is in accordance with approved Acoustic Report SLR Ref No:620.10512-R09-v5.0.

Plan of Development information Supplied by RPS Group PLC.

Copyright © Veris Australia Pty Ltd
01 September 2021.

Plot Date: 02 Sep, 2021
Computer File Ref: 30109-Stg2J-SP-D.dwg



LEGEND

Rock Retaining Wall shown as:-	
Sleeper Retaining Wall shown as:-	
Landscape Retaining Wall shown as:-	
Sewer line	
Sewer Manhole	
Roofwater Drainage line and Catch Pit	
Stormwater Drainage Line	
Stormwater Manhole	
Stormwater Pit	
Water Main	
Water Conduit	
Water Service Point of Entry	
Underground Electricity, Street Light, Electricity Pillar & NBN	
Developer Fencing	
Concrete Pathway	
Landscape Street Tree	
Zero Setback Building Line	
Indicative Building Envelope	
Proposed Services Easement	
Indicative Parking Access Location	
Bin Pads	

ADDITIONAL NOTES:

Allotments used as Multiple Residential Allotments in accordance with the approved Plan of Development may have a reduced primary road setback to 3.0metres as noted on the Plan of Development Table.

Compaction of any fill material placed on this site shall be completed to level one inspection and testing services in accordance with AS3798-2007.

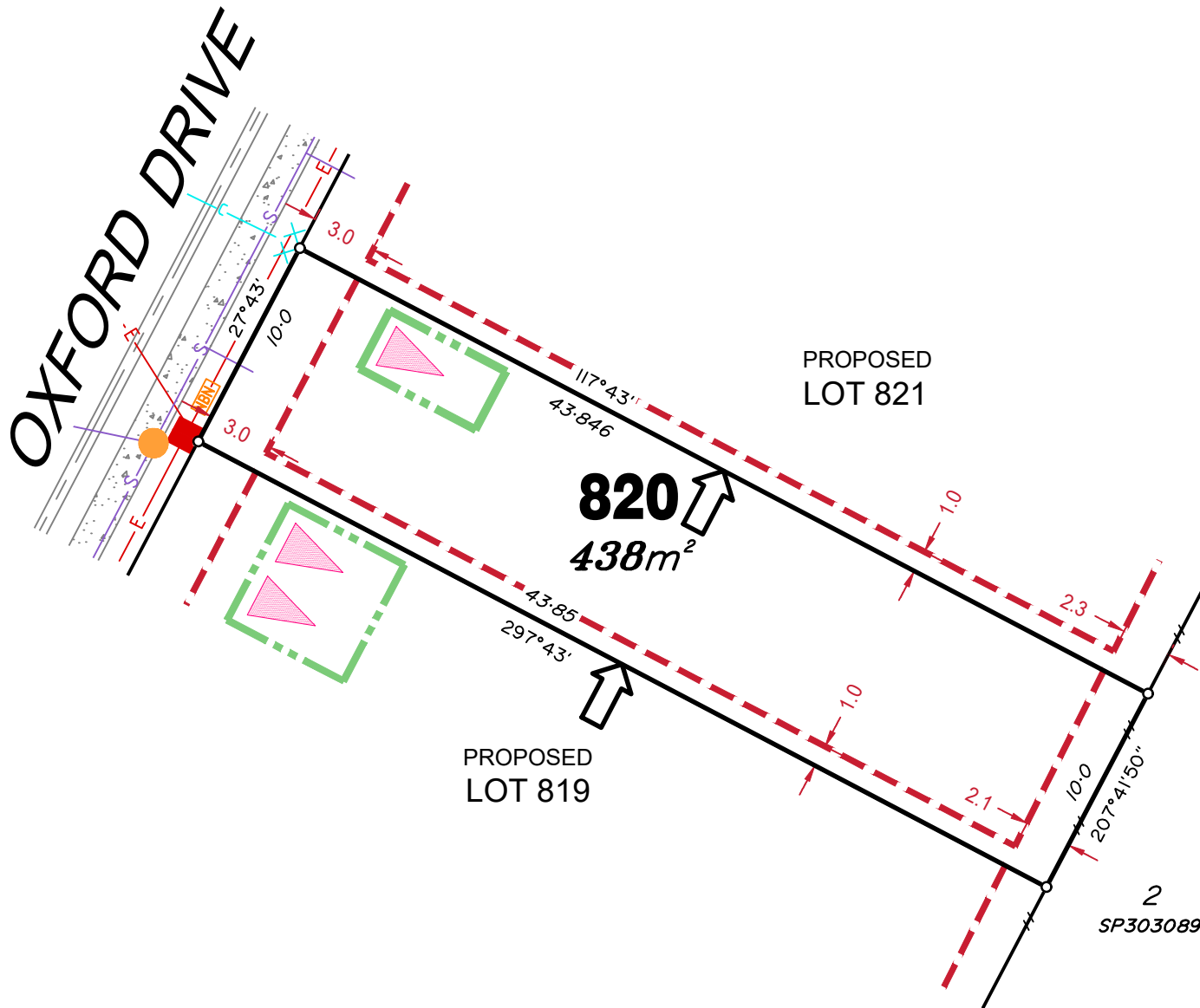
Location of sewer, roofwater, stormwater, water reticulation and electricity lines, manholes and pits are those shown on engineering design drawings, supplied by Peak Urban and Meinhardt Urban Pty Ltd, and may differ from the as-constructed location.

Developer fencing is in accordance with approved Acoustic Report SLR Ref No:620.10512-R09-v5.0.

Plan of Development information Supplied by RPS Group PLC.

Copyright © Veris Australia Pty Ltd
01 September 2021.

Plot Date: 02 Sep, 2021
Computer File Ref: 30109-Stg2J-SP-D.dwg



LEGEND

Rock Retaining Wall shown as:-	
Sleeper Retaining Wall shown as:-	
Landscape Retaining Wall shown as:-	
Sewer line	
Sewer Manhole	
Roofwater Drainage line and Catch Pit	
Stormwater Drainage Line	
Stormwater Manhole	
Stormwater Pit	
Water Main	
Water Conduit	
Water Service Point of Entry	
Underground Electricity, Street Light, Electricity Pillar & NBN	
Developer Fencing	
Concrete Pathway	
Landscape Street Tree	
Zero Setback Building Line	
Indicative Building Envelope	
Proposed Services Easement	
Indicative Parking Access Location	
Bin Pads	

ADDITIONAL NOTES:

Allotments used as Multiple Residential Allotments in accordance with the approved Plan of Development may have a reduced primary road setback to 3.0metres as noted on the Plan of Development Table.

Compaction of any fill material placed on this site shall be completed to level one inspection and testing services in accordance with AS3798-2007.

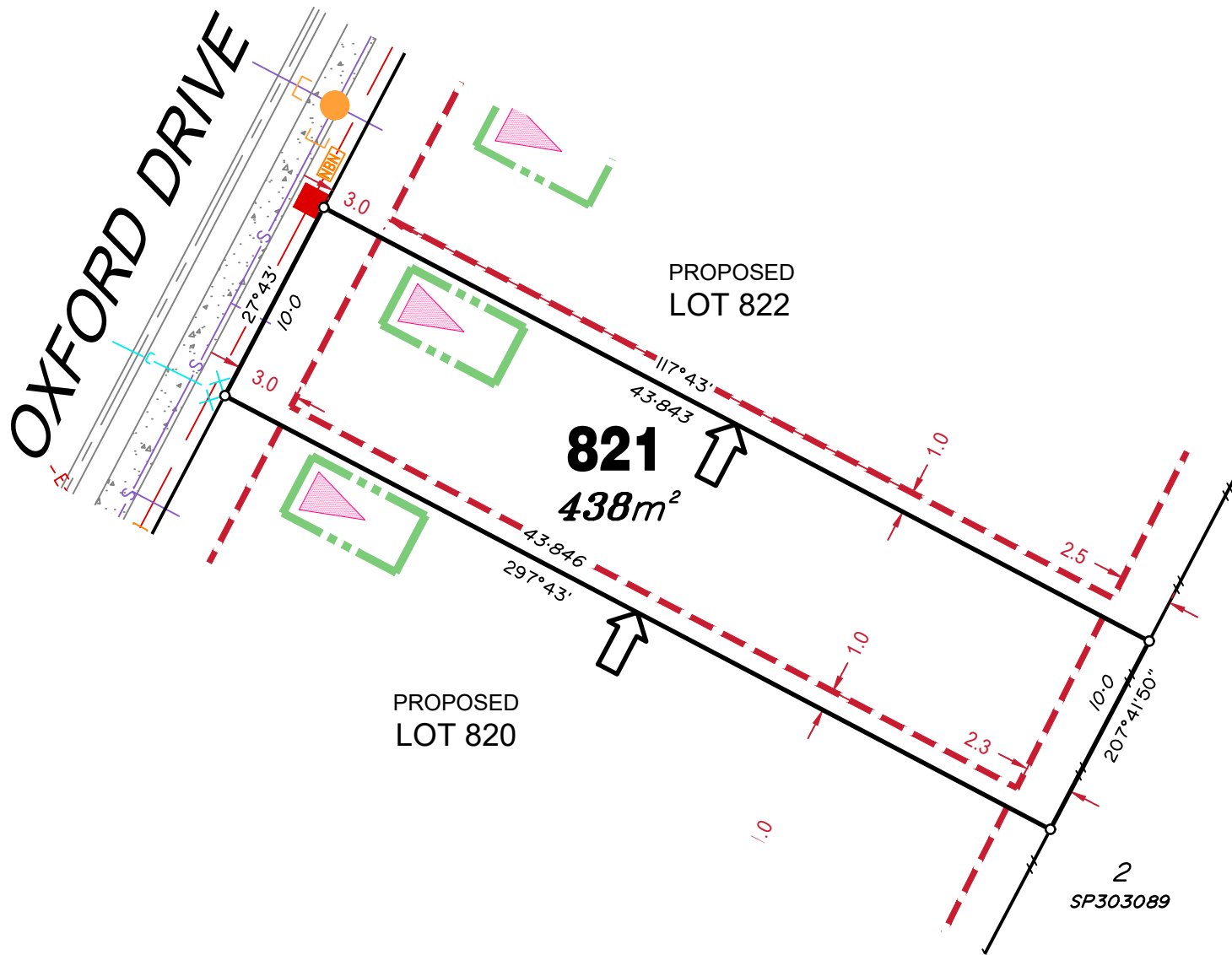
Location of sewer, roofwater, stormwater, water reticulation and electricity lines, manholes and pits are those shown on engineering design drawings, supplied by Peak Urban and Meinhardt Urban Pty Ltd, and may differ from the as-constructed location.

Developer fencing is in accordance with approved Acoustic Report SLR Ref No:620.10512-R09-v5.0.

Plan of Development information Supplied by RPS Group PLC.

Copyright © Veris Australia Pty Ltd
01 September 2021.

Plot Date: 02 Sep, 2021
 Computer File Ref: 30109-Stg2J-SP-D.dwg



LEGEND

Rock Retaining Wall shown as:-



Sleeper Retaining Wall shown as:-



Landscape Retaining Wall shown as:-



Sewer line



Sewer Manhole



Roofwater Drainage line and Catch Pit



Stormwater Drainage Line



Stormwater Manhole



Stormwater Pit

Water Main



Water Conduit



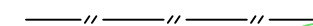
Water Service Point of Entry



Underground Electricity, Street Light, Electricity Pillar & NBN



Developer Fencing



Concrete Pathway



Landscape Street Tree



Zero Setback Building Line



Indicative Building Envelope



Proposed Services Easement



Indicative Parking Access Location



Bin Pads



ADDITIONAL NOTES:

Allotments used as Multiple Residential Allotments in accordance with the approved Plan of Development may have a reduced primary road setback to 3.0metres as noted on the Plan of Development Table.

Compaction of any fill material placed on this site shall be completed to level one inspection and testing services in accordance with AS3798-2007.

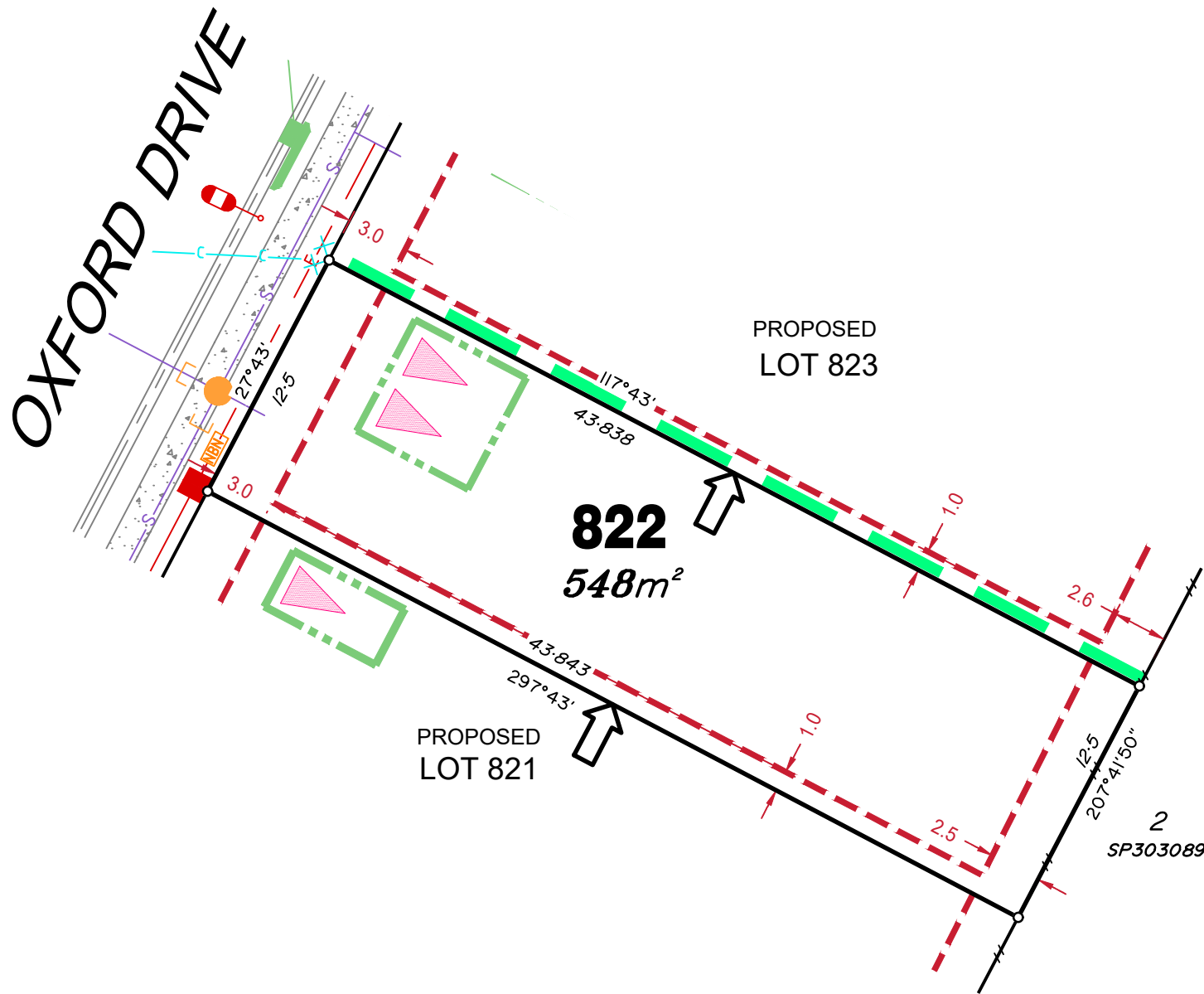
Location of sewer, roofwater, stormwater, water reticulation and electricity lines, manholes and pits are those shown on engineering design drawings, supplied by Peak Urban and Meinhardt Urban Pty Ltd, and may differ from the as-constructed location.

Developer fencing is in accordance with approved Acoustic Report SLR Ref No:620.10512-R09-v5.0.

Plan of Development information Supplied by RPS Group PLC.

Copyright © Veris Australia Pty Ltd
01 September 2021.

Plot Date: 02 Sep, 2021
Computer File Ref: 30109-Stg2J-SP-D.dwg



LEGEND

Rock Retaining Wall shown as:-		
Sleeper Retaining Wall shown as:-		
Landscape Retaining Wall shown as:-		
Sewer line		
Sewer Manhole		
Roofwater Drainage line and Catch Pit		
Stormwater Drainage Line		
Stormwater Manhole		
Stormwater Pit		
Water Main		
Water Conduit		
Water Service Point of Entry		
Underground Electricity, Street Light, Electricity Pillar & NBN		
Developer Fencing		
Concrete Pathway		
Landscape Street Tree		
Zero Setback Building Line		
Indicative Building Envelope		
Proposed Services Easement		
Indicative Parking Access Location		
Bin Pads		

ADDITIONAL NOTES:

Allotments used as Multiple Residential Allotments in accordance with the approved Plan of Development may have a reduced primary road setback to 3.0metres as noted on the Plan of Development Table.

Compaction of any fill material placed on this site shall be completed to level one inspection and testing services in accordance with AS3798-2007.

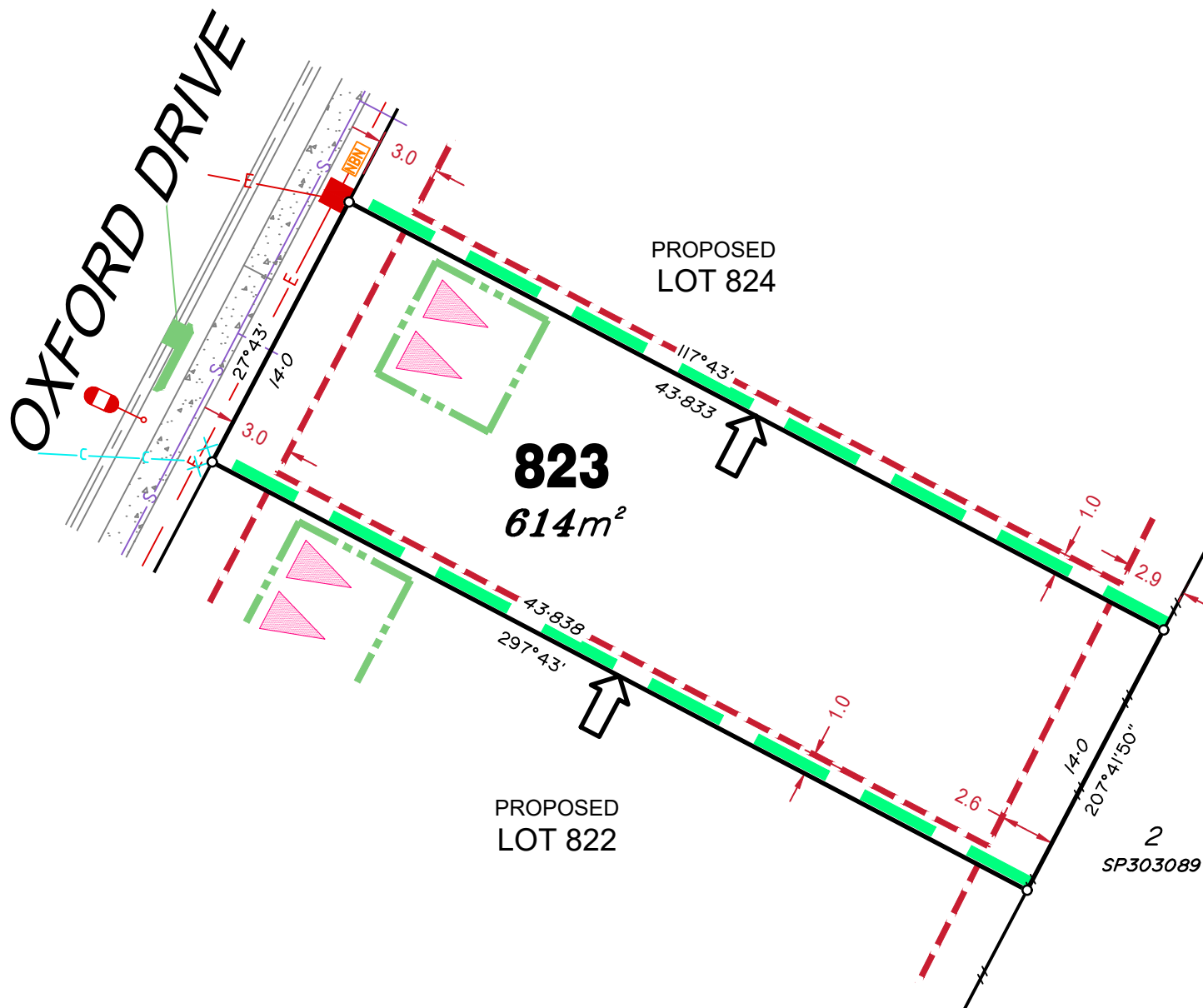
Location of sewer, roofwater, stormwater, water reticulation and electricity lines, manholes and pits are those shown on engineering design drawings, supplied by Peak Urban and Meinhardt Urban Pty Ltd, and may differ from the as-constructed location.

Developer fencing is in accordance with approved Acoustic Report SLR Ref No:620.10512-R09-v5.0.

Plan of Development information Supplied by RPS Group PLC.

Copyright © Veris Australia Pty Ltd
01 September 2021.

Plot Date: 02 Sep, 2021
 Computer File Ref: 30109-Stg2J-SP-D.dwg



LEGEND

Rock Retaining Wall shown as:-		
Sleeper Retaining Wall shown as:-		
Landscape Retaining Wall shown as:-		
Sewer line		
Sewer Manhole		
Roofwater Drainage line and Catch Pit		
Stormwater Drainage Line		
Stormwater Manhole		
Stormwater Pit		
Water Main		
Water Conduit		
Water Service Point of Entry		
Underground Electricity, Street Light, Electricity Pillar & NBN		
Developer Fencing		
Concrete Pathway		
Landscape Street Tree		
Zero Setback Building Line		
Indicative Building Envelope		
Proposed Services Easement		
Indicative Parking Access Location		
Bin Pads		

ADDITIONAL NOTES:

Allotments used as Multiple Residential Allotments in accordance with the approved Plan of Development may have a reduced primary road setback to 3.0metres as noted on the Plan of Development Table.

Compaction of any fill material placed on this site shall be completed to level one inspection and testing services in accordance with AS3798-2007.

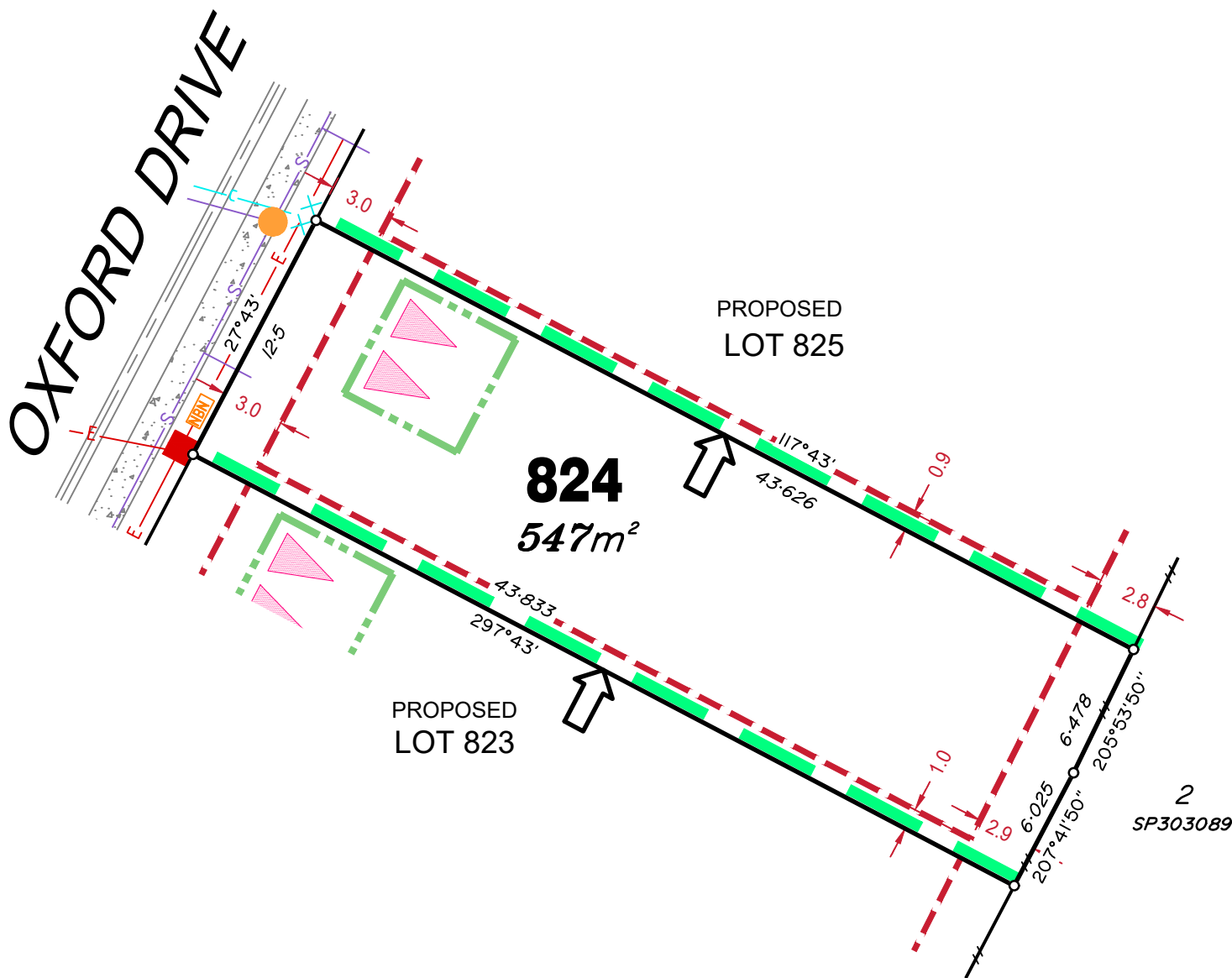
Location of sewer, roofwater, stormwater, water reticulation and electricity lines, manholes and pits are those shown on engineering design drawings, supplied by Peak Urban and Meinhardt Urban Pty Ltd, and may differ from the as-constructed location.

Developer fencing is in accordance with approved Acoustic Report SLR Ref No:620.10512-R09-v5.0.

Plan of Development information Supplied by RPS Group PLC.

Copyright © Veris Australia Pty Ltd
01 September 2021.

Plot Date: 02 Sep, 2021
Computer File Ref: 30109-Stg2J-SP-D.dwg



LEGEND

Rock Retaining Wall shown as:-	
Sleeper Retaining Wall shown as:-	
Landscape Retaining Wall shown as:-	
Sewer line	
Sewer Manhole	
Roofwater Drainage line and Catch Pit	
Stormwater Drainage Line	
Stormwater Manhole	
Stormwater Pit	
Water Main	
Water Conduit	
Water Service Point of Entry	
Underground Electricity, Street Light, Electricity Pillar & NBN	
Developer Fencing	
Concrete Pathway	
Landscape Street Tree	
Zero Setback Building Line	
Indicative Building Envelope	
Proposed Services Easement	
Indicative Parking Access Location	
Bin Pads	

ADDITIONAL NOTES:

Allotments used as Multiple Residential Allotments in accordance with the approved Plan of Development may have a reduced primary road setback to 3.0metres as noted on the Plan of Development Table.

Compaction of any fill material placed on this site shall be completed to level one inspection and testing services in accordance with AS3798-2007.

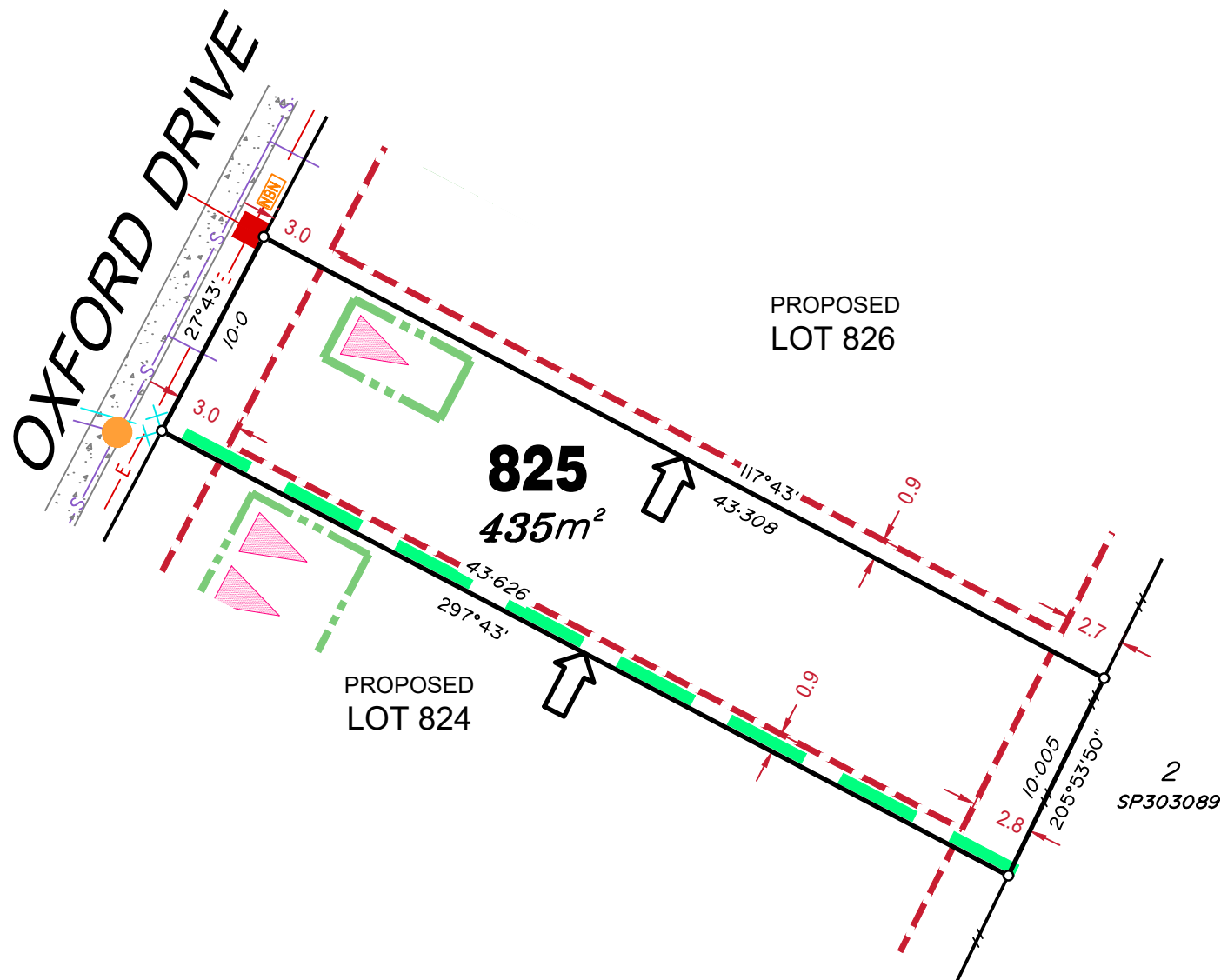
Location of sewer, roofwater, stormwater, water reticulation and electricity lines, manholes and pits are those shown on engineering design drawings, supplied by Peak Urban and Meinhardt Urban Pty Ltd, and may differ from the as-constructed location.

Developer fencing is in accordance with approved Acoustic Report SLR Ref No:620.10512-R09-v5.0.

Plan of Development information Supplied by RPS Group PLC.

Copyright © Veris Australia Pty Ltd
01 September 2021.

Plot Date: 02 Sep, 2021
Computer File Ref: 30109-Stg2J-SP-D.dwg



LEGEND

Rock Retaining Wall shown as:-	
Sleeper Retaining Wall shown as:-	
Landscape Retaining Wall shown as:-	
Sewer line	
Sewer Manhole	
Roofwater Drainage line and Catch Pit	
Stormwater Drainage Line	
Stormwater Manhole	
Stormwater Pit	
Water Main	
Water Conduit	
Water Service Point of Entry	
Underground Electricity, Street Light, Electricity Pillar & NBN	
Developer Fencing	
Concrete Pathway	
Landscape Street Tree	
Zero Setback Building Line	
Indicative Building Envelope	
Proposed Services Easement	
Indicative Parking Access Location	
Bin Pads	

ADDITIONAL NOTES:

Allotments used as Multiple Residential Allotments in accordance with the approved Plan of Development may have a reduced primary road setback to 3.0metres as noted on the Plan of Development Table.

Compaction of any fill material placed on this site shall be completed to level one inspection and testing services in accordance with AS3798-2007.

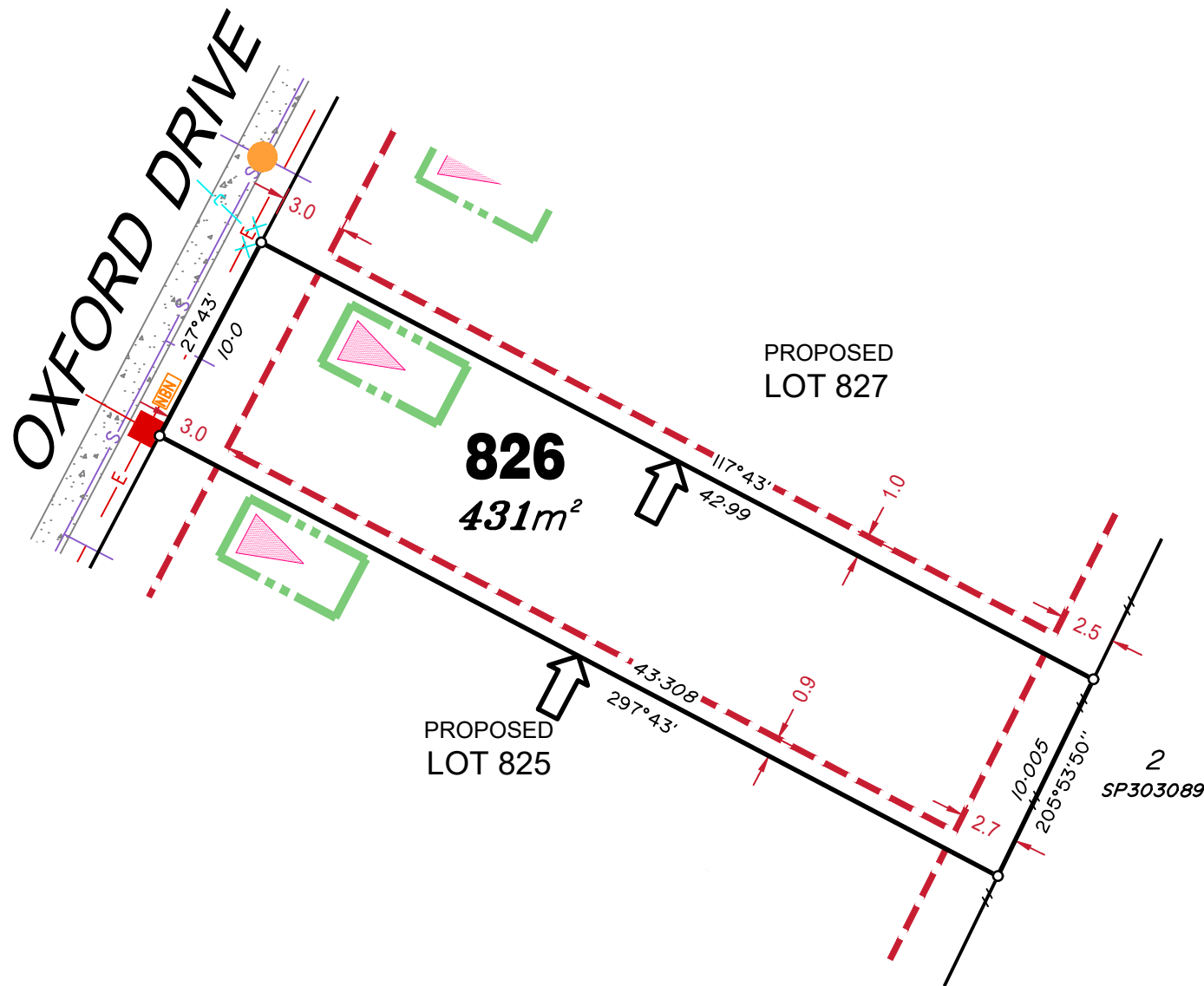
Location of sewer, roofwater, stormwater, water reticulation and electricity lines, manholes and pits are those shown on engineering design drawings, supplied by Peak Urban and Meinhardt Urban Pty Ltd, and may differ from the as-constructed location.

Developer fencing is in accordance with approved Acoustic Report SLR Ref No:620.10512-R09-v5.0.

Plan of Development information Supplied by RPS Group PLC.

Copyright © Veris Australia Pty Ltd
01 September 2021.

Plot Date: 02 Sep, 2021
Computer File Ref: 30109-Stg2J-SP-D.dwg



LEGEND

Rock Retaining Wall shown as:-

Sleeper Retaining Wall shown as:-

Landscape Retaining Wall shown as:-

Sewer line

Sewer Manhole

Roofwater Drainage line and Catch Pit

Stormwater Drainage Line

Stormwater Manhole

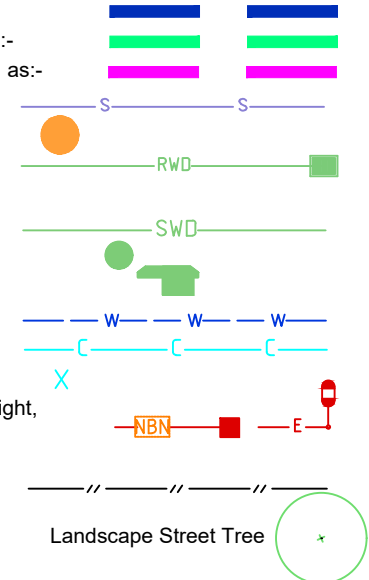
Stormwater Pit

Water Main

Water Conduit

Water Service Point of Entry

Underground Electricity, Street Light, Electricity Pillar & NBN



Developer Fencing

Concrete Pathway

Landscape Street Tree

Zero Setback Building Line

Indicative Building Envelope

Proposed Services Easement

Indicative Parking Access Location

Bin Pads *

ADDITIONAL NOTES:

Allotments used as Multiple Residential Allotments in accordance with the approved Plan of Development may have a reduced primary road setback to 3.0metres as noted on the Plan of Development Table.

Compaction of any fill material placed on this site shall be completed to level one inspection and testing services in accordance with AS3798-2007.

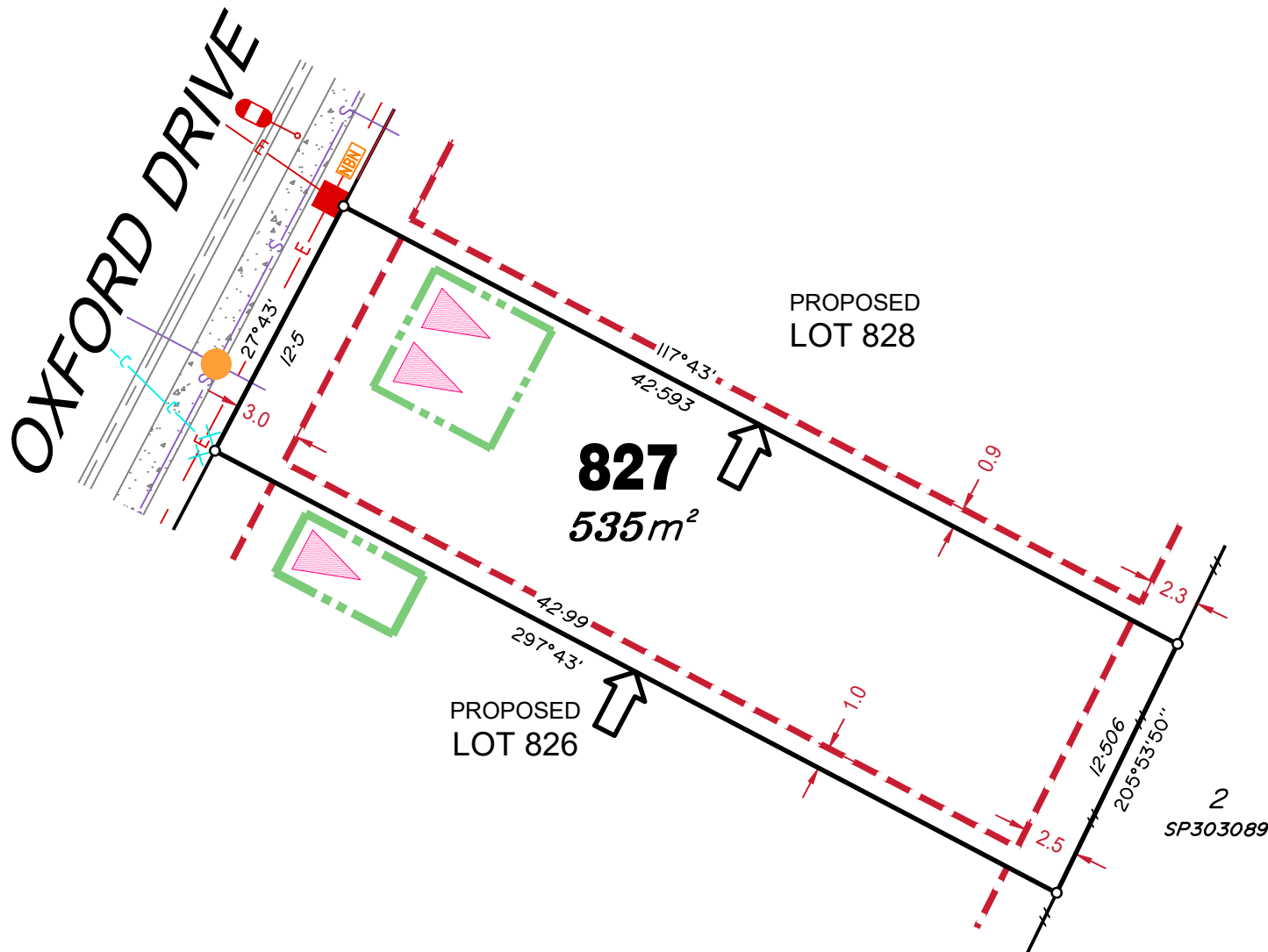
Location of sewer, roofwater, stormwater, water reticulation and electricity lines, manholes and pits are those shown on engineering design drawings, supplied by Peak Urban and Meinhardt Urban Pty Ltd, and may differ from the as-constructed location.

Developer fencing is in accordance with approved Acoustic Report SLR Ref No:620.10512-R09-v5.0.

Plan of Development information Supplied by RPS Group PLC.

Copyright © Veris Australia Pty Ltd
01 September 2021.

Plot Date: 02 Sep, 2021
Computer File Ref: 30109-Stg2J-SP-D.dwg



LEGEND

Rock Retaining Wall shown as:-	
Sleeper Retaining Wall shown as:-	
Landscape Retaining Wall shown as:-	
Sewer line	
Sewer Manhole	
Roofwater Drainage line and Catch Pit	
Stormwater Drainage Line	
Stormwater Manhole	
Stormwater Pit	
Water Main	
Water Conduit	
Water Service Point of Entry	
Underground Electricity, Street Light, Electricity Pillar & NBN	
Developer Fencing	
Concrete Pathway	
Landscape Street Tree	
Zero Setback Building Line	
Indicative Building Envelope	
Proposed Services Easement	
Indicative Parking Access Location	
Bin Pads	

ADDITIONAL NOTES:

Allotments used as Multiple Residential Allotments in accordance with the approved Plan of Development may have a reduced primary road setback to 3.0metres as noted on the Plan of Development Table.

Compaction of any fill material placed on this site shall be completed to level one inspection and testing services in accordance with AS3798-2007.

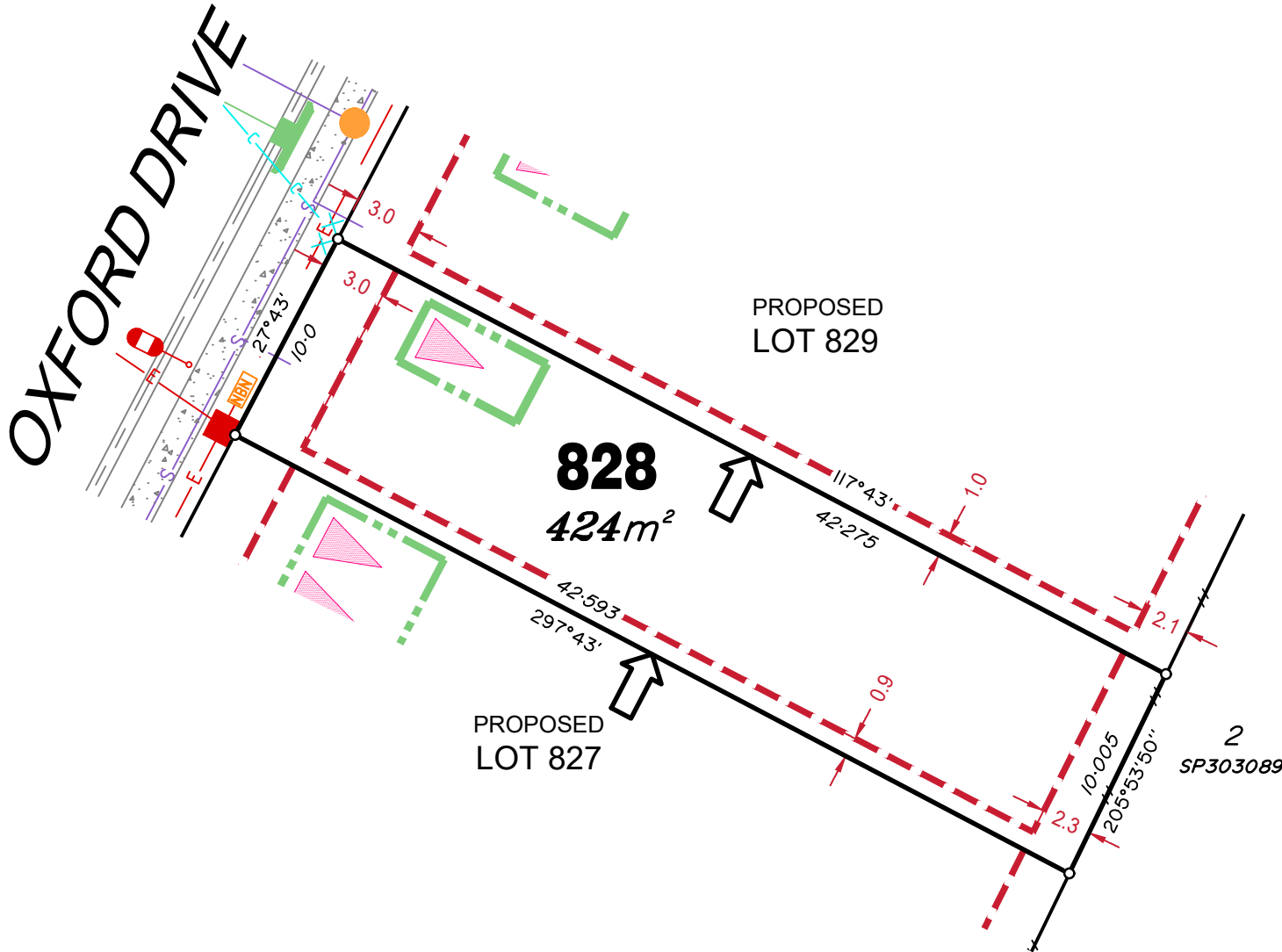
Location of sewer, roofwater, stormwater, water reticulation and electricity lines, manholes and pits are those shown on engineering design drawings, supplied by Peak Urban and Meinhardt Urban Pty Ltd, and may differ from the as-constructed location.

Developer fencing is in accordance with approved Acoustic Report SLR Ref No:620.10512-R09-v5.0.

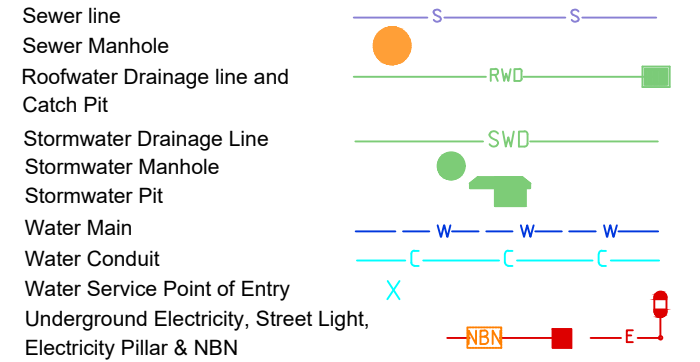
Plan of Development information Supplied by RPS Group PLC.

Copyright © Veris Australia Pty Ltd
01 September 2021.

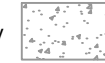
Plot Date: 02 Sep, 2021
Computer File Ref: 30109-Stg2J-SP-D.dwg



Rock Retaining Wall shown as:-
Sleeper Retaining Wall shown as:-
Landscape Retaining Wall shown as:-



Concrete Pathway



Landscape Street Tree



Indicative Building Envelope



nt



Allotments used as Multiple Residential Allotments in accordance with the approved Plan of Development may have a reduced primary road setback to 3.0metres as noted on the Plan of Development Table.

Compaction of any fill material placed on this site shall be completed to level one inspection and testing services in accordance with AS3798-2007.

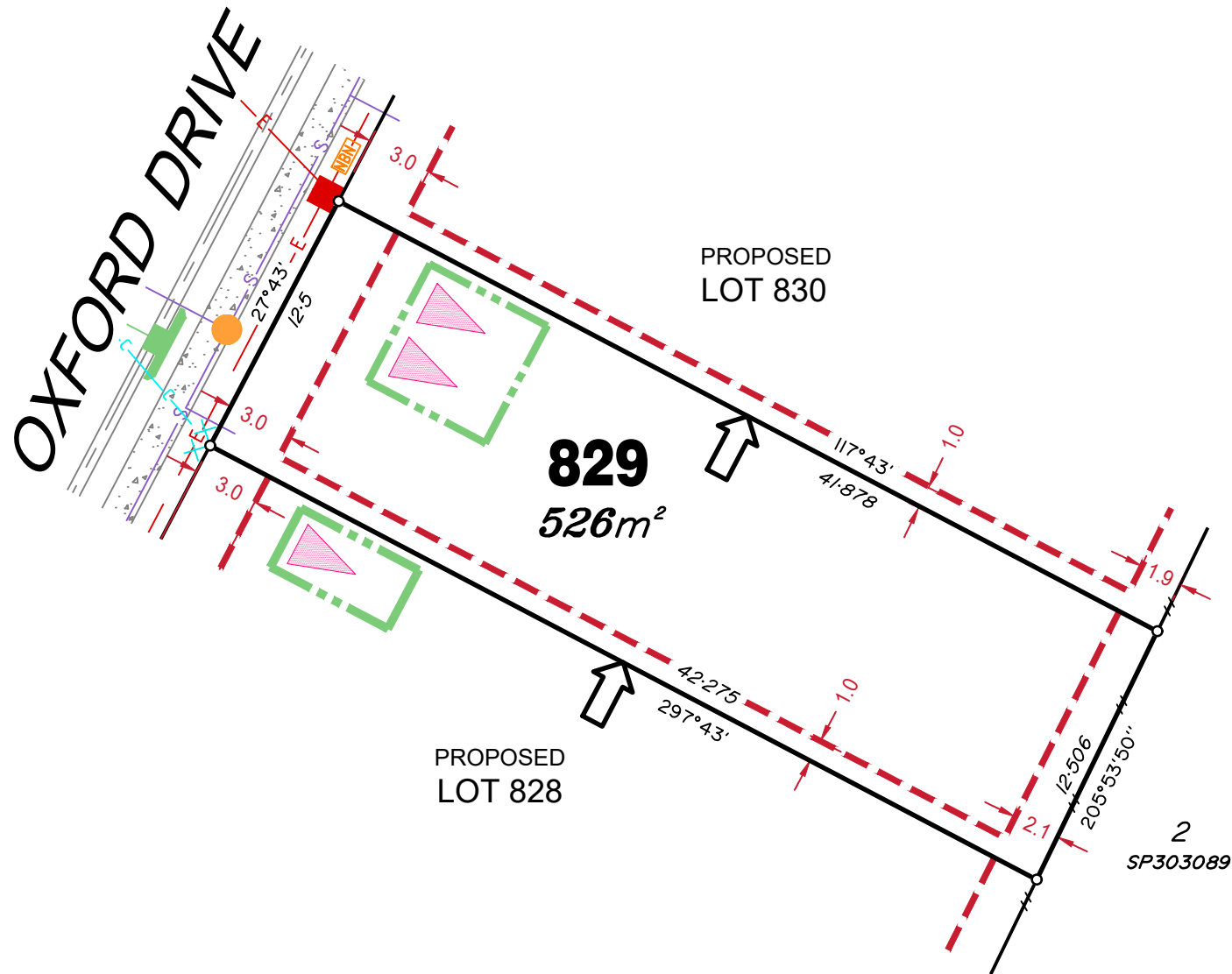
Location of sewer, roofwater, stormwater, water reticulation and electricity lines, manholes and pits are those shown on engineering design drawings, supplied by Peak Urban and Meinhardt Urban Pty Ltd, and may differ from the as-constructed location.

Developer fencing is in accordance with approved Acoustic Report SLR Ref No:620.10512-R09-v5.0.

Plan of Development information Supplied by RPS Group PLC.

Copyright © Veris Australia Pty Ltd
01 September 2021.

Plot Date: 02 Sep, 2021
Computer File Ref: 30109-Stg2J-SP-D.dwg



LEGEND

Rock Retaining Wall shown as:-	
Sleeper Retaining Wall shown as:-	
Landscape Retaining Wall shown as:-	
Sewer line	
Sewer Manhole	
Roofwater Drainage line and Catch Pit	
Stormwater Drainage Line	
Stormwater Manhole	
Stormwater Pit	
Water Main	
Water Conduit	
Water Service Point of Entry	
Underground Electricity, Street Light, Electricity Pillar & NBN	
Developer Fencing	
Concrete Pathway	
Landscape Street Tree	
Zero Setback Building Line	
Indicative Building Envelope	
Proposed Services Easement	
Indicative Parking Access Location	
Bin Pads	

ADDITIONAL NOTES:

Allotments used as Multiple Residential Allotments in accordance with the approved Plan of Development may have a reduced primary road setback to 3.0metres as noted on the Plan of Development Table.

Compaction of any fill material placed on this site shall be completed to level one inspection and testing services in accordance with AS3798-2007.

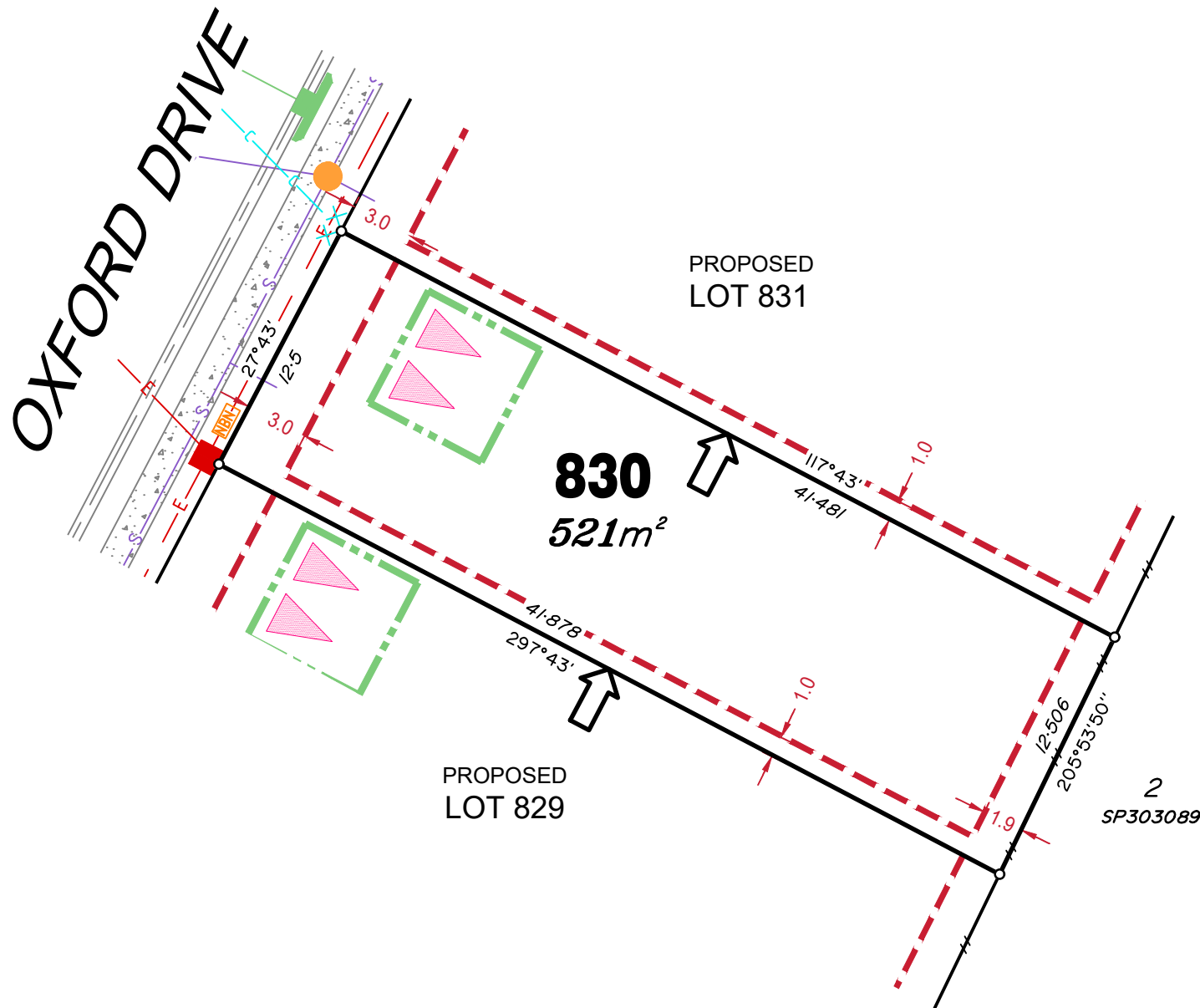
Location of sewer, roofwater, stormwater, water reticulation and electricity lines, manholes and pits are those shown on engineering design drawings, supplied by Peak Urban and Meinhardt Urban Pty Ltd, and may differ from the as-constructed location.

Developer fencing is in accordance with approved Acoustic Report SLR Ref No:620.10512-R09-v5.0.

Plan of Development information Supplied by RPS Group PLC.

Copyright © Veris Australia Pty Ltd
01 September 2021.

Plot Date: 02 Sep, 2021
 Computer File Ref: 30109-Stg2J-SP-D.dwg



LEGEND

Rock Retaining Wall shown as:-	
Sleeper Retaining Wall shown as:-	
Landscape Retaining Wall shown as:-	
Sewer line	
Sewer Manhole	
Roofwater Drainage line and Catch Pit	
Stormwater Drainage Line	
Stormwater Manhole	
Stormwater Pit	
Water Main	
Water Conduit	
Water Service Point of Entry	
Underground Electricity, Street Light, Electricity Pillar & NBN	
Developer Fencing	
Concrete Pathway	
Landscape Street Tree	
Zero Setback Building Line	
Indicative Building Envelope	
Proposed Services Easement	
Indicative Parking Access Location	
Bin Pads	

ADDITIONAL NOTES:

Allotments used as Multiple Residential Allotments in accordance with the approved Plan of Development may have a reduced primary road setback to 3.0metres as noted on the Plan of Development Table.

Compaction of any fill material placed on this site shall be completed to level one inspection and testing services in accordance with AS3798-2007.

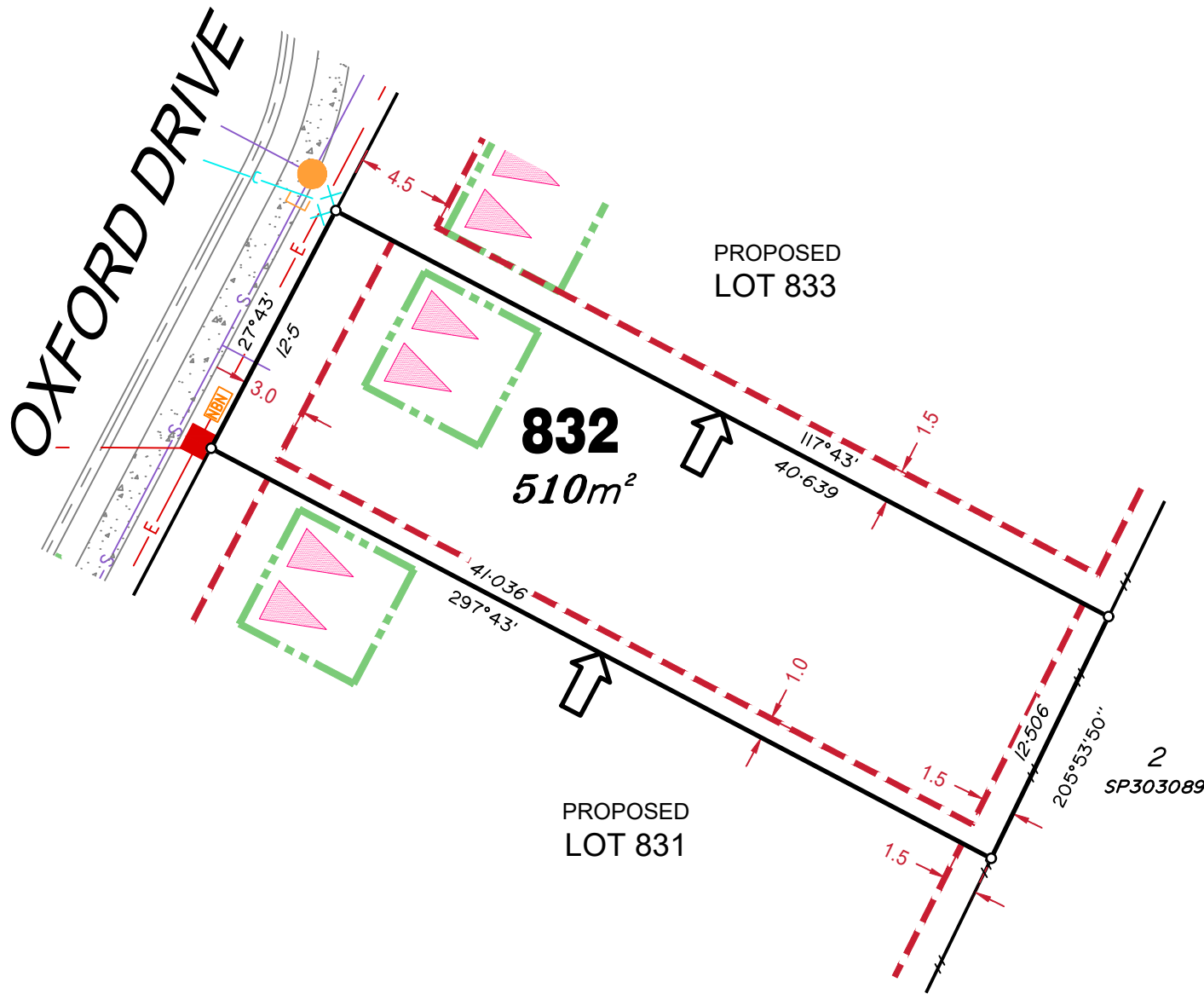
Location of sewer, roofwater, stormwater, water reticulation and electricity lines, manholes and pits are those shown on engineering design drawings, supplied by Peak Urban and Meinhardt Urban Pty Ltd, and may differ from the as-constructed location.

Developer fencing is in accordance with approved Acoustic Report SLR Ref No:620.10512-R09-v5.0.

Plan of Development information Supplied by RPS Group PLC.

Copyright © Veris Australia Pty Ltd
01 September 2021.

Plot Date: 02 Sep, 2021
 Computer File Ref: 30109-Stg2J-SP-D.dwg



LEGEND

Rock Retaining Wall shown as:-	
Sleeper Retaining Wall shown as:-	
Landscape Retaining Wall shown as:-	
Sewer line	
Sewer Manhole	
Roofwater Drainage line and Catch Pit	
Stormwater Drainage Line	
Stormwater Manhole	
Stormwater Pit	
Water Main	
Water Conduit	
Water Service Point of Entry	
Underground Electricity, Street Light, Electricity Pillar & NBN	
Developer Fencing	
Concrete Pathway	
Landscape Street Tree	
Zero Setback Building Line	
Indicative Building Envelope	
Proposed Services Easement	
Indicative Parking Access Location	
Bin Pads	

ADDITIONAL NOTES:

Allotments used as Multiple Residential Allotments in accordance with the approved Plan of Development may have a reduced primary road setback to 3.0metres as noted on the Plan of Development Table.

Compaction of any fill material placed on this site shall be completed to level one inspection and testing services in accordance with AS3798-2007.

Location of sewer, roofwater, stormwater, water reticulation and electricity lines, manholes and pits are those shown on engineering design drawings, supplied by Peak Urban and Meinhardt Urban Pty Ltd, and may differ from the as-constructed location.

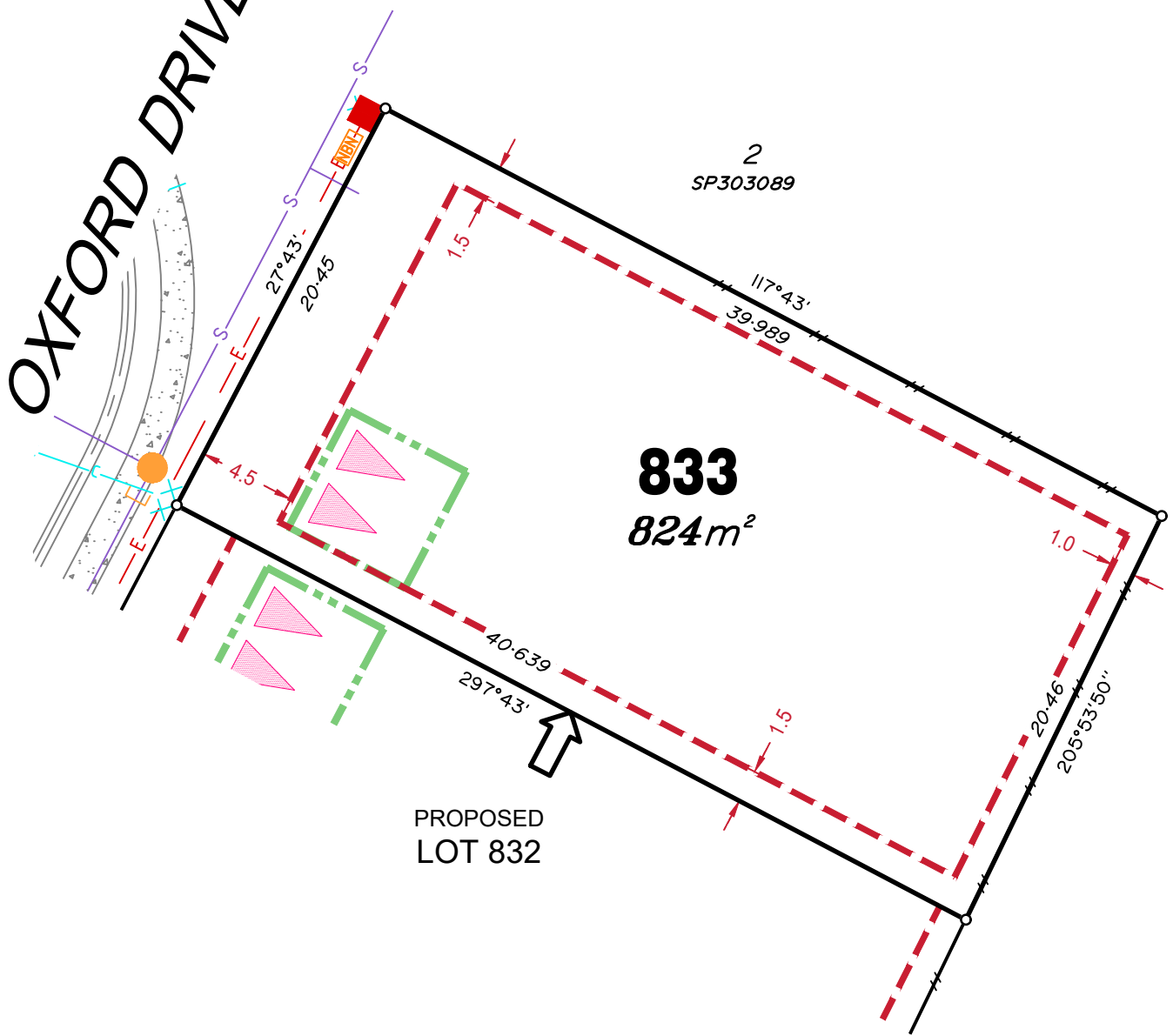
Developer fencing is in accordance with approved Acoustic Report SLR Ref No:620.10512-R09-v5.0.

Plan of Development information Supplied by RPS Group PLC.

Copyright © Veris Australia Pty Ltd
01 September 2021.

Plot Date: 02 Sep, 2021
Computer File Ref: 30109-Stg2J-SP-D.dwg

OXFORD DRIVE



LEGEND

Rock Retaining Wall shown as:-



Sleeper Retaining Wall shown as:-



Landscape Retaining Wall shown as:-



Sewer line



Sewer Manhole



Roofwater Drainage line and



Catch Pit

Stormwater Drainage Line



Stormwater Manhole



Stormwater Pit

Water Main



Water Conduit



Water Service Point of Entry



Underground Electricity, Street Light,



Electricity Pillar & NBN

Developer Fencing



Concrete Pathway



Landscape Street Tree



Zero Setback Building Line



Indicative Building Envelope



Proposed Services Easement



Indicative Parking Access Location



Bin Pads



ADDITIONAL NOTES:

Allotments used as Multiple Residential Allotments in accordance with the approved Plan of Development may have a reduced primary road setback to 3.0metres as noted on the Plan of Development Table.

Compaction of any fill material placed on this site shall be completed to level one inspection and testing services in accordance with AS3798-2007.

Location of sewer, roofwater, stormwater, water reticulation and electricity lines, manholes and pits are those shown on engineering design drawings, supplied by Peak Urban and Meinhardt Urban Pty Ltd, and may differ from the as-constructed location.

Developer fencing is in accordance with approved Acoustic Report SLR Ref No:620.10512-R09-v5.0.

Plan of Development information Supplied by RPS Group PLC.

Copyright © Veris Australia Pty Ltd
01 September 2021.

Plot Date: 02 Sep, 2021
Computer File Ref: 30109-Stg2J-SP-D.dwg