

LEGEND

| | |
|-----------------------------------------------------------------|--|
| Rock Retaining Wall shown as:- | |
| Sleeper Retaining Wall shown as:- | |
| Landscape Retaining Wall shown as:- | |
| Sewer line | |
| Sewer Manhole | |
| Roofwater Drainage line and Catch Pit | |
| Stormwater Drainage Line | |
| Stormwater Manhole | |
| Stormwater Pit | |
| Water Main | |
| Water Conduit | |
| Water Service Point of Entry | |
| Underground Electricity, Street Light, Electricity Pillar & NBN | |
| Developer Fencing | |
| Concrete Pathway | |
| Landscape Street Tree | |
| Zero Setback Building Line | |
| Indicative Building Envelope | |
| Proposed Services Easement | |
| Indicative Parking Access Location | |

ADDITIONAL NOTES:

Allotments used as Multiple Residential Allotments in accordance with the approved Plan of Development may have a reduced primary road setback to 3.0metres as noted on the Plan of Development Table.

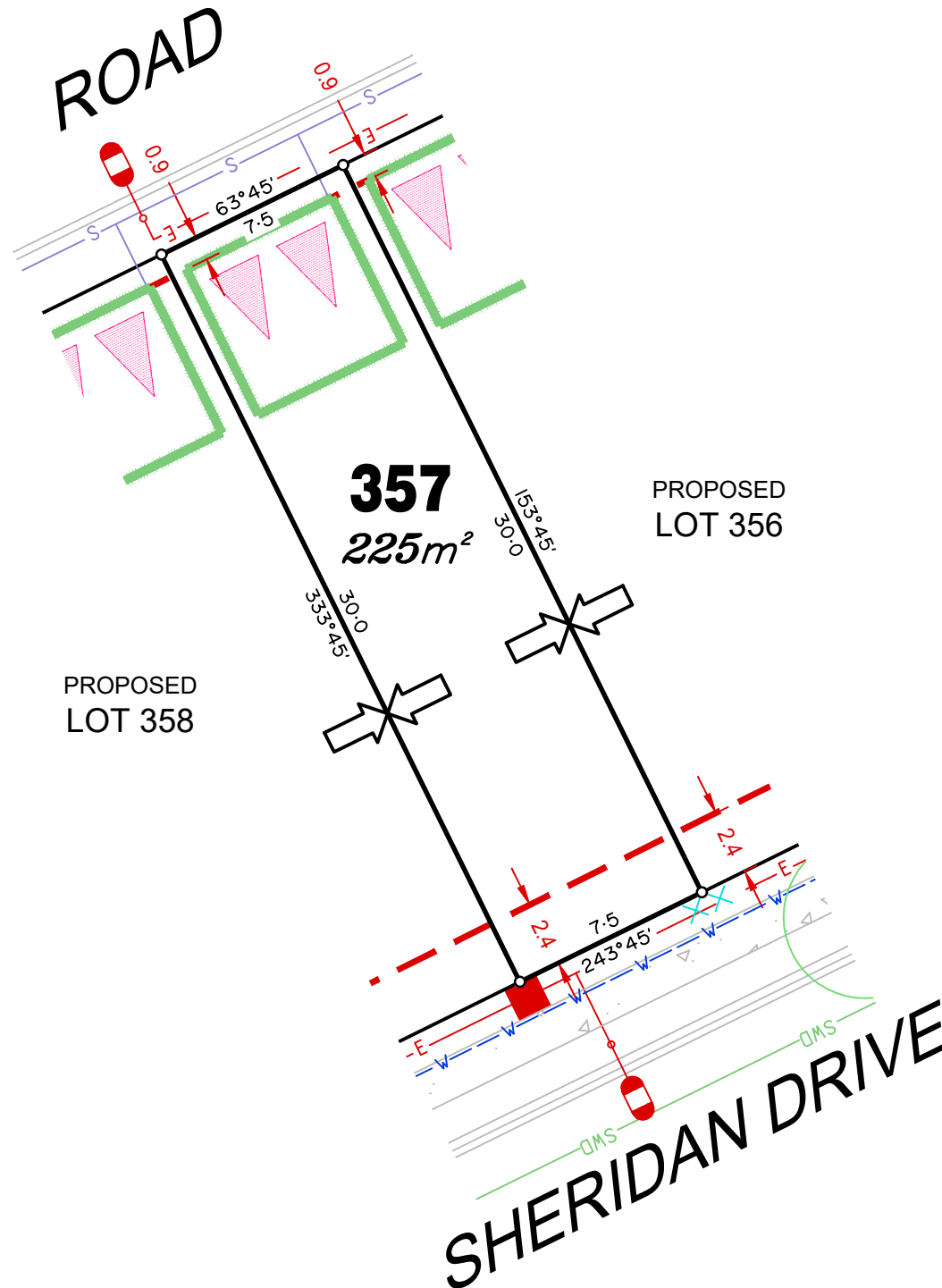
Compaction of any fill material placed on this site shall be completed to level one inspection and testing services in accordance with AS3798-2007.

Location of sewer, roofwater, stormwater, water reticulation and electricity lines, manholes and pits are those shown on engineering design drawings, supplied by Bradlees Meinhardt, and may differ from the as-constructed location.

Plan of Development information Supplied by RPS Group PLC.

Copyright © Veris Australia Pty Ltd
7th November 2019.

Plot Date: 14 Nov, 2019
Computer File Ref: 30109-St1R-SP revC.dwg



LEGEND

| | |
|-----------------------------------------------------------------|--|
| Rock Retaining Wall shown as:- | |
| Sleeper Retaining Wall shown as:- | |
| Landscape Retaining Wall shown as:- | |
| Sewer line | |
| Sewer Manhole | |
| Roofwater Drainage line and Catch Pit | |
| Stormwater Drainage Line | |
| Stormwater Manhole | |
| Stormwater Pit | |
| Water Main | |
| Water Conduit | |
| Water Service Point of Entry | |
| Underground Electricity, Street Light, Electricity Pillar & NBN | |
| Developer Fencing | |
| Concrete Pathway | |
| Landscape Street Tree | |
| Zero Setback Building Line | |
| Indicative Building Envelope | |
| Proposed Services Easement | |
| Indicative Parking Access Location | |

ADDITIONAL NOTES:

Allotments used as Multiple Residential Allotments in accordance with the approved Plan of Development may have a reduced primary road setback to 3.0metres as noted on the Plan of Development Table.

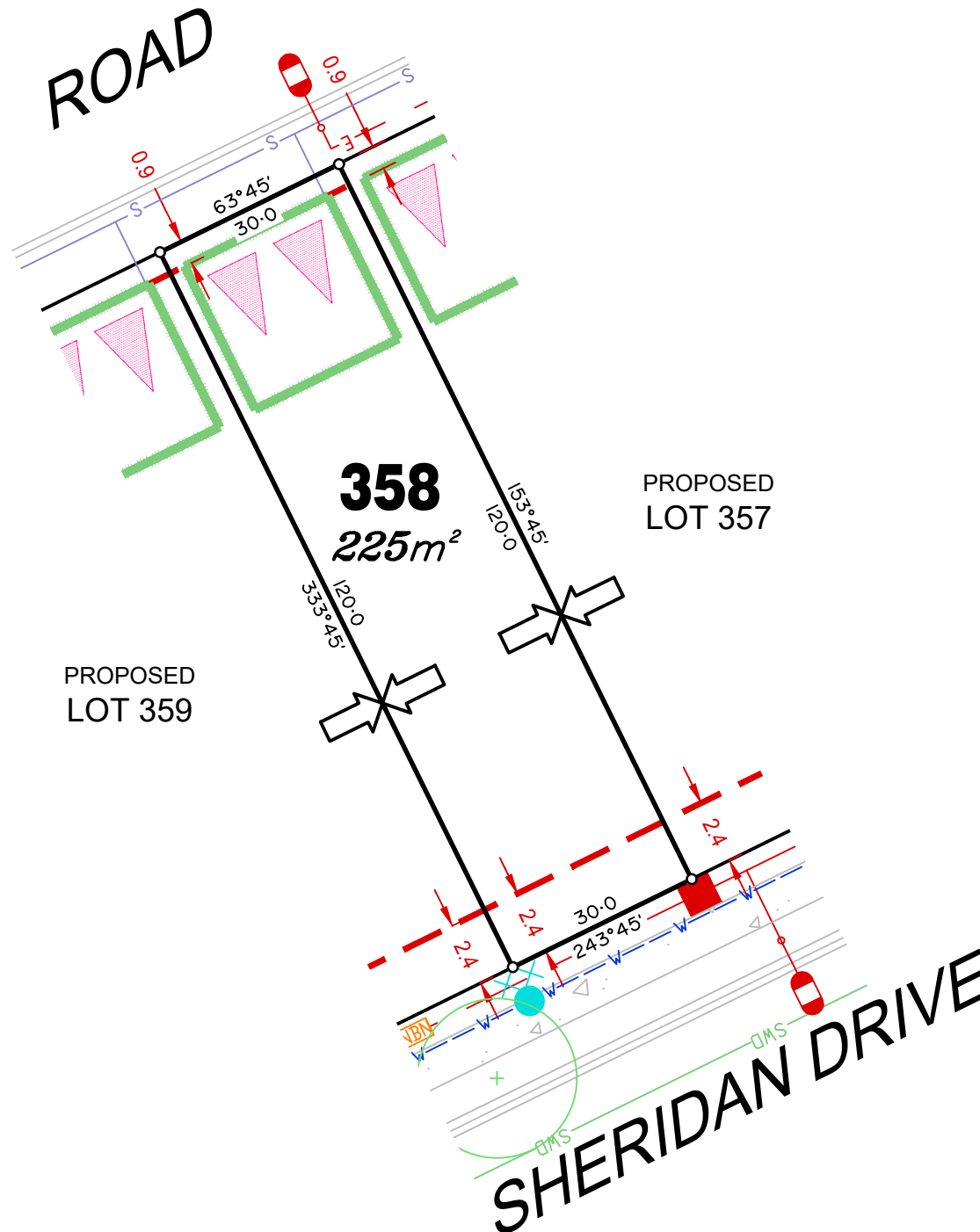
Compaction of any fill material placed on this site shall be completed to level one inspection and testing services in accordance with AS3798-2007.

Location of sewer, roofwater, stormwater, water reticulation and electricity lines, manholes and pits are those shown on engineering design drawings, supplied by Bradlees Meinhardt, and may differ from the as-constructed location.

Plan of Development information Supplied by RPS Group PLC.

Copyright © Veris Australia Pty Ltd
7th November 2019.

Plot Date: 14 Nov, 2019
Computer File Ref: 30109-St1R-SP revC.dwg



LEGEND

Rock Retaining Wall shown as:-
 Sleeper Retaining Wall shown as:-
 Landscape Retaining Wall shown as:-



Sewer line



Sewer Manhole



Roofwater Drainage line and
 Catch Pit



Stormwater Drainage Line



Stormwater Manhole



Stormwater Pit

Water Main



Water Conduit



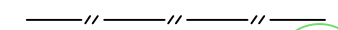
Water Service Point of Entry



Underground Electricity, Street Light,
 Electricity Pillar & NBN



Developer Fencing



Concrete Pathway



Landscape Street Tree



Zero Setback Building Line



Indicative Building Envelope



Proposed Services Easement



Indicative Parking Access Location



ADDITIONAL NOTES:

Allotments used as Multiple Residential Allotments in accordance with the approved Plan of Development may have a reduced primary road setback to 3.0metres as noted on the Plan of Development Table.

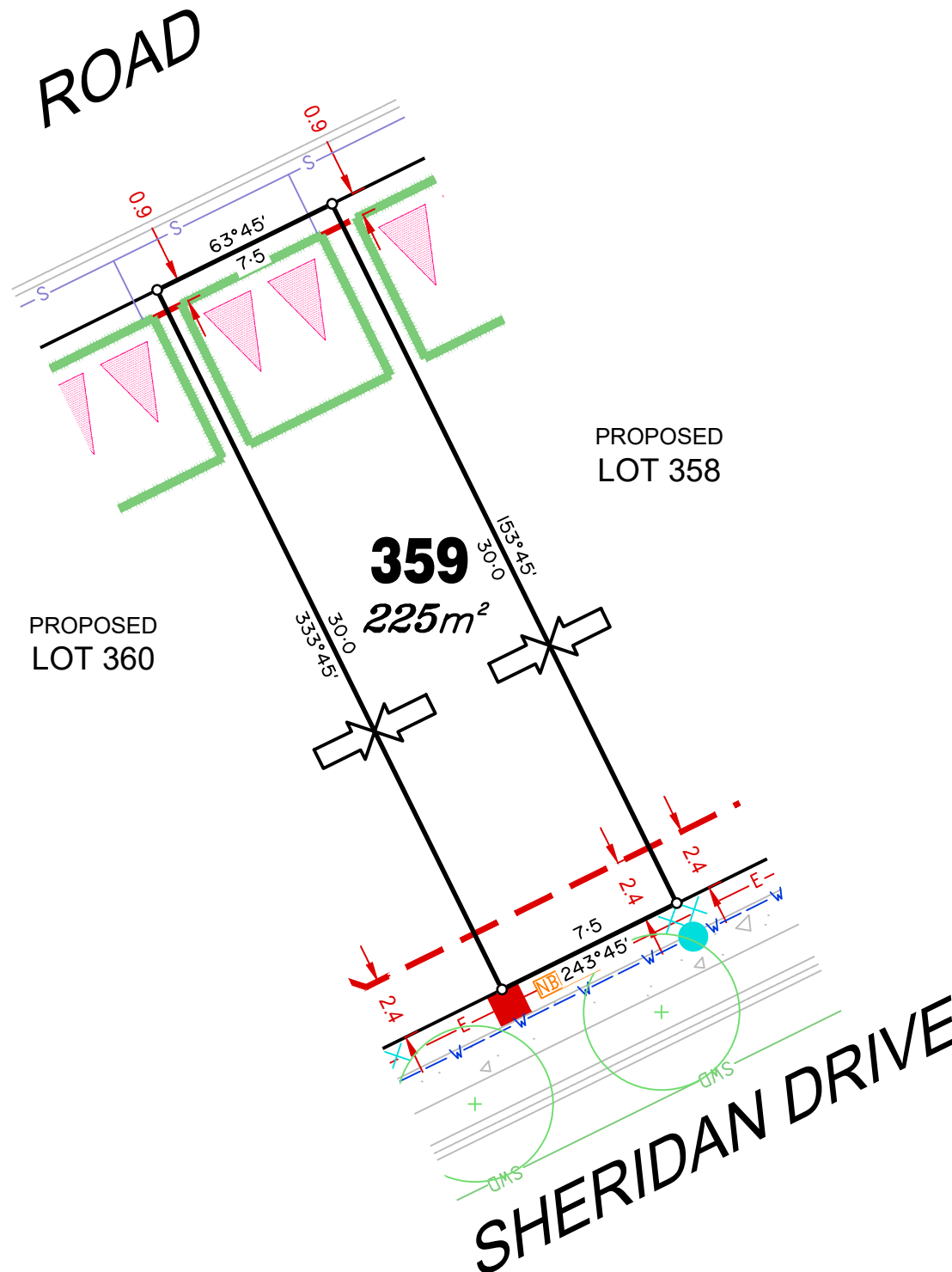
Compaction of any fill material placed on this site shall be completed to level one inspection and testing services in accordance with AS3798-2007.

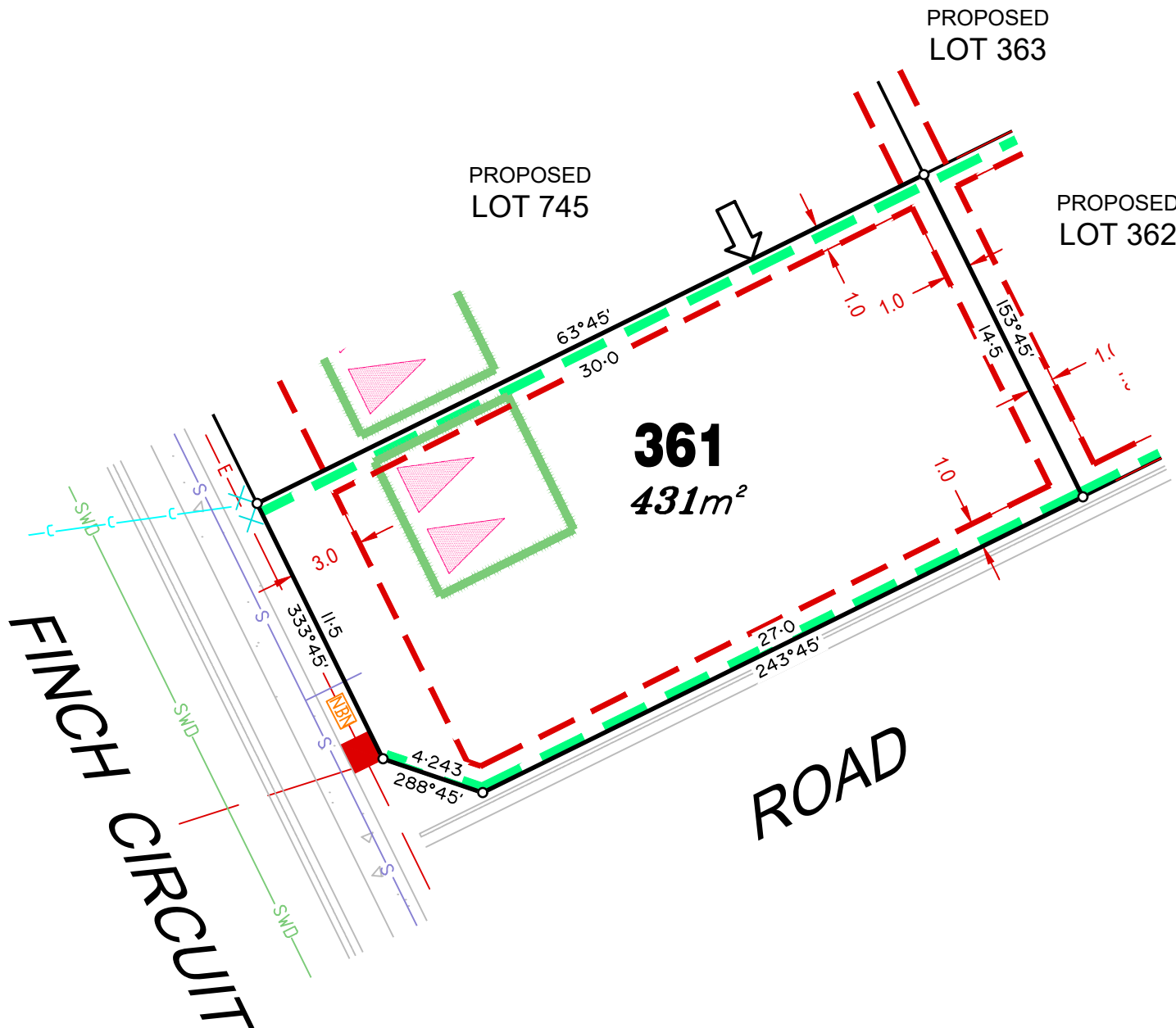
Location of sewer, roofwater, stormwater, water reticulation and electricity lines, manholes and pits are those shown on engineering design drawings, supplied by Bradlees Meinhardt, and may differ from the as-constructed location.

Plan of Development information Supplied by RPS Group PLC.

Copyright © Veris Australia Pty Ltd
 7th November 2019.

Plot Date: 14 Nov, 2019
 Computer File Ref: 30109-St1R-SP revC.dwg





LEGEND

| | |
|-----------------------------------------------------------------|--|
| Rock Retaining Wall shown as:- | |
| Sleeper Retaining Wall shown as:- | |
| Landscape Retaining Wall shown as:- | |
| Sewer line | |
| Sewer Manhole | |
| Roofwater Drainage line and Catch Pit | |
| Stormwater Drainage Line | |
| Stormwater Manhole | |
| Stormwater Pit | |
| Water Main | |
| Water Conduit | |
| Water Service Point of Entry | |
| Underground Electricity, Street Light, Electricity Pillar & NBN | |
| Developer Fencing | |
| Concrete Pathway | |
| Landscape Street Tree | |
| Zero Setback Building Line | |
| Indicative Building Envelope | |
| Proposed Services Easement | |
| Indicative Parking Access Location | |

ADDITIONAL NOTES:

Allotments used as Multiple Residential Allotments in accordance with the approved Plan of Development may have a reduced primary road setback to 3.0metres as noted on the Plan of Development Table.

Compaction of any fill material placed on this site shall be completed to level one inspection and testing services in accordance with AS3798-2007.

Location of sewer, roofwater, stormwater, water reticulation and electricity lines, manholes and pits are those shown on engineering design drawings, supplied by Bradlees Meinhardt, and may differ from the as-constructed location.

Plan of Development information Supplied by RPS Group PLC.

Copyright © Veris Australia Pty Ltd
7th November 2019.

Plot Date: 14 Nov, 2019
Computer File Ref: 30109-St1R-SP revC.dwg



LEGEND

| | |
|-----------------------------------------------------------------|--|
| Rock Retaining Wall shown as:- | |
| Sleeper Retaining Wall shown as:- | |
| Landscape Retaining Wall shown as:- | |
| Sewer line | |
| Sewer Manhole | |
| Roofwater Drainage line and Catch Pit | |
| Stormwater Drainage Line | |
| Stormwater Manhole | |
| Stormwater Pit | |
| Water Main | |
| Water Conduit | |
| Water Service Point of Entry | |
| Underground Electricity, Street Light, Electricity Pillar & NBN | |
| Developer Fencing | |
| Concrete Pathway | |
| Landscape Street Tree | |
| Zero Setback Building Line | |
| Indicative Building Envelope | |
| Proposed Services Easement | |
| Indicative Parking Access Location | |

ADDITIONAL NOTES:

Allotments used as Multiple Residential Allotments in accordance with the approved Plan of Development may have a reduced primary road setback to 3.0metres as noted on the Plan of Development Table.

Compaction of any fill material placed on this site shall be completed to level one inspection and testing services in accordance with AS3798-2007.





















Location of sewer, roofwater, stormwater, water reticulation and electricity lines, manholes and pits are those shown on engineering design drawings, supplied by Bradlees Meinhardt, and may differ from the as-constructed location.

Plan of Development information Supplied by RPS Group PLC.

Copyright © Veris Australia Pty Ltd
7th November 2019.

Plot Date: 14 Nov, 2019
Computer File Ref: 30109-St1R-SP revC.dwg

LEGEND

| | |
|-----------------------------------------------------------------|-------------------------------------------------------------------------------------|
| Rock Retaining Wall shown as:- |  |
| Sleeper Retaining Wall shown as:- |  |
| Landscape Retaining Wall shown as:- |  |
| Sewer line |  |
| Sewer Manhole |  |
| Roofwater Drainage line and Catch Pit |  |
| Stormwater Drainage Line |  |
| Stormwater Manhole |  |
| Stormwater Pit |  |
| Water Main |  |
| Water Conduit |  |
| Water Service Point of Entry |  |
| Underground Electricity, Street Light, Electricity Pillar & NBN |  |
| Developer Fencing |  |
| Concrete Pathway |  |
| Landscape Street Tree |  |
| Zero Setback Building Line |  |
| Indicative Building Envelope |  |
| Proposed Services Easement |  |
| Indicative Parking Access Location |  |

ADDITIONAL NOTES:

Allotments used as Multiple Residential Allotments in accordance with the approved Plan of Development may have a reduced primary road setback to 3.0metres as noted on the Plan of Development Table.

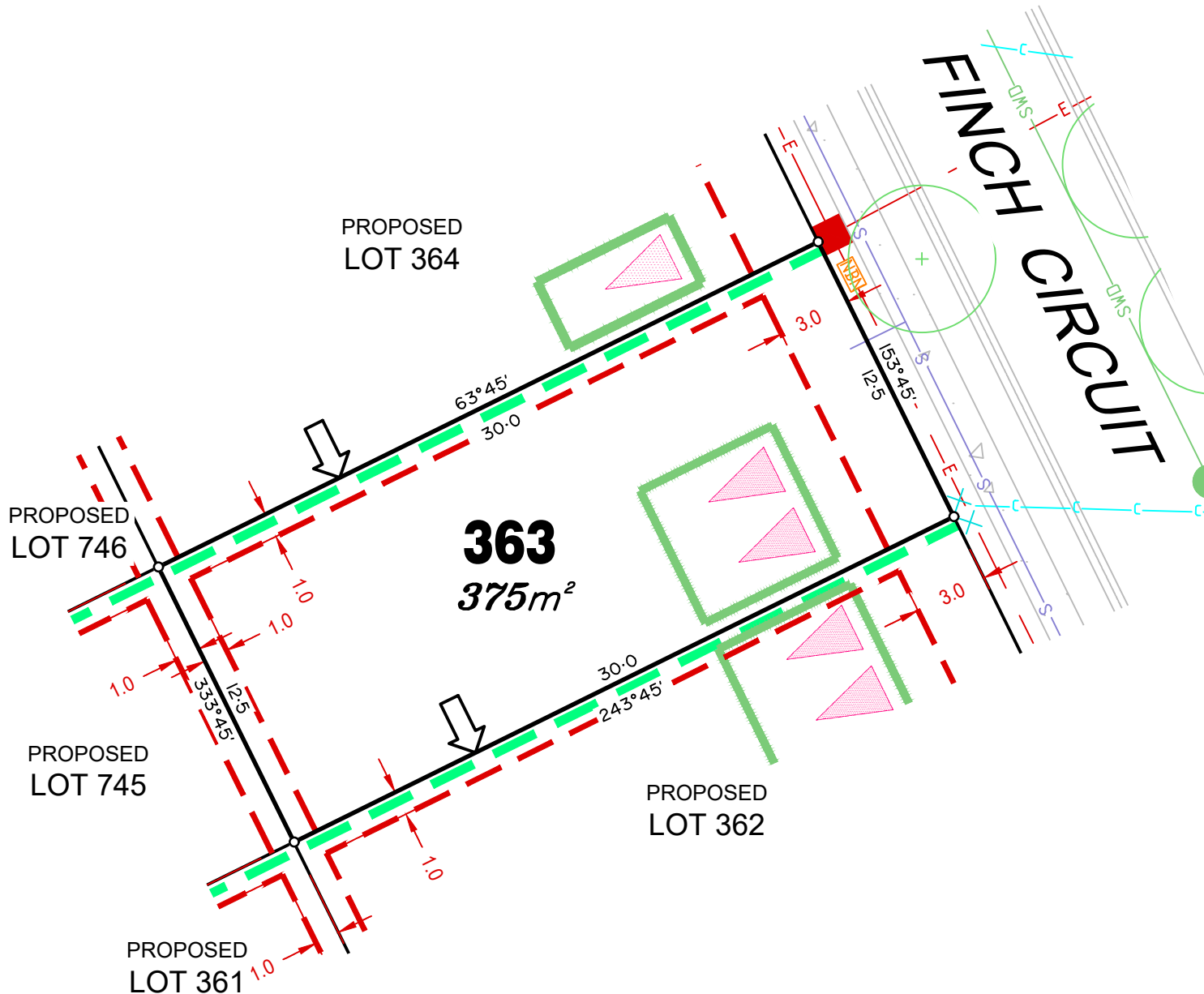
Compaction of any fill material placed on this site shall be completed to level one inspection and testing services in accordance with AS3798-2007.

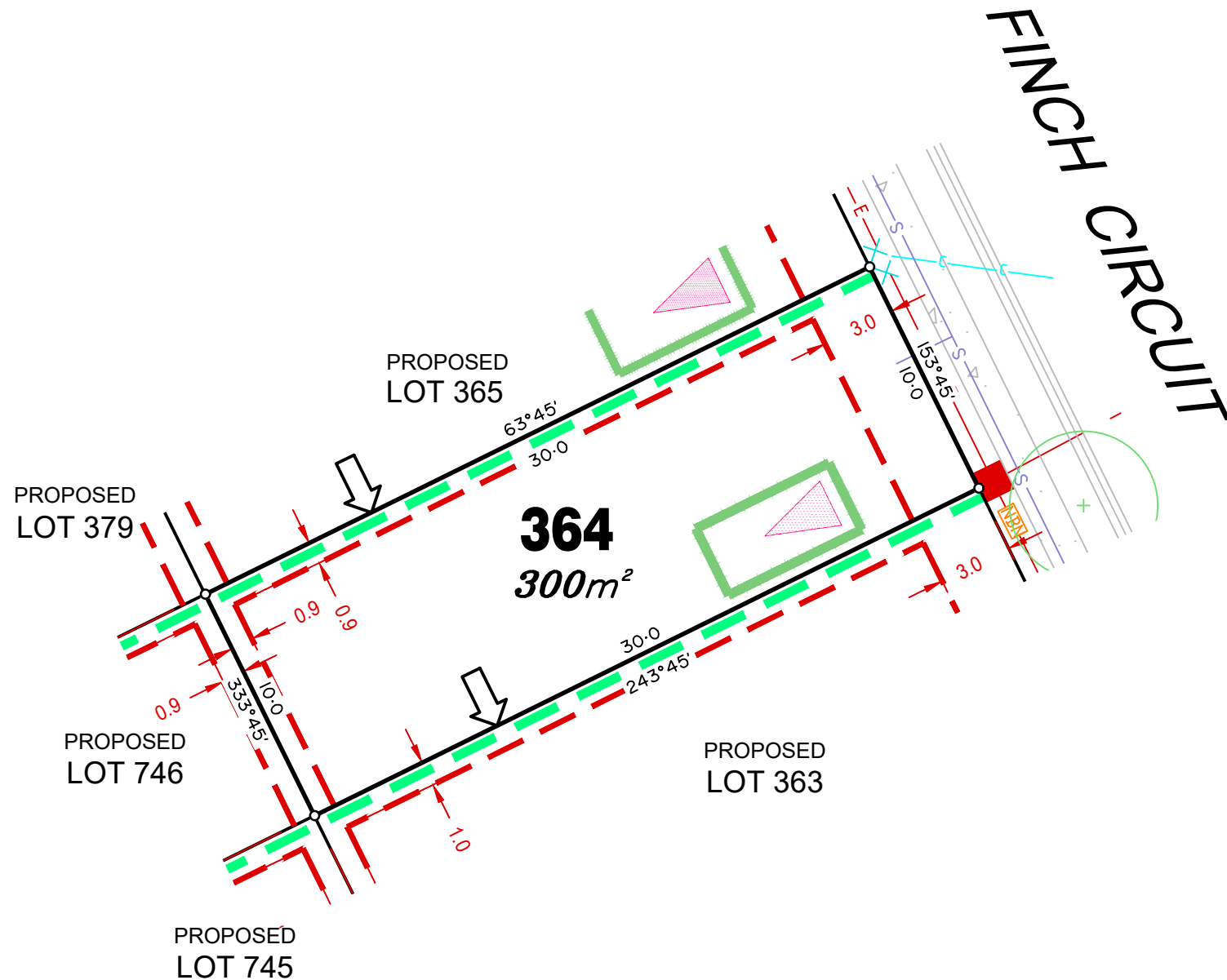
Location of sewer, roofwater, stormwater, water reticulation and electricity lines, manholes and pits are those shown on engineering design drawings, supplied by Bradlees Meinhardt, and may differ from the as-constructed location.

Plan of Development information Supplied by RPS Group PLC.

Copyright © Veris Australia Pty Ltd
7th November 2019.

Plot Date: 14 Nov, 2019
Computer File Ref: 30109-St1R-SP revC.dwg





LEGEND

| | |
|-----------------------------------------------------------------|--|
| Rock Retaining Wall shown as:- | |
| Sleeper Retaining Wall shown as:- | |
| Landscape Retaining Wall shown as:- | |
| Sewer line | |
| Sewer Manhole | |
| Roofwater Drainage line and Catch Pit | |
| Stormwater Drainage Line | |
| Stormwater Manhole | |
| Stormwater Pit | |
| Water Main | |
| Water Conduit | |
| Water Service Point of Entry | |
| Underground Electricity, Street Light, Electricity Pillar & NBN | |
| Developer Fencing | |
| Concrete Pathway | |
| Landscape Street Tree | |
| Zero Setback Building Line | |
| Indicative Building Envelope | |
| Proposed Services Easement | |
| Indicative Parking Access Location | |

ADDITIONAL NOTES:

Allotments used as Multiple Residential Allotments in accordance with the approved Plan of Development may have a reduced primary road setback to 3.0metres as noted on the Plan of Development Table.

Compaction of any fill material placed on this site shall be completed to level one inspection and testing services in accordance with AS3798-2007.

Location of sewer, roofwater, stormwater, water reticulation and electricity lines, manholes and pits are those shown on engineering design drawings, supplied by Bradlees Meinhardt, and may differ from the as-constructed location.

Plan of Development information Supplied by RPS Group PLC.

Copyright © Veris Australia Pty Ltd
7th November 2019.

Plot Date: 14 Nov, 2019
Computer File Ref: 30109-St1R-SP revC.dwg



LEGEND

| | |
|-----------------------------------------------------------------|--|
| Rock Retaining Wall shown as:- | |
| Sleeper Retaining Wall shown as:- | |
| Landscape Retaining Wall shown as:- | |
| Sewer line | |
| Sewer Manhole | |
| Roofwater Drainage line and Catch Pit | |
| Stormwater Drainage Line | |
| Stormwater Manhole | |
| Stormwater Pit | |
| Water Main | |
| Water Conduit | |
| Water Service Point of Entry | |
| Underground Electricity, Street Light, Electricity Pillar & NBN | |
| Developer Fencing | |
| Concrete Pathway | |
| Landscape Street Tree | |
| Zero Setback Building Line | |
| Indicative Building Envelope | |
| Proposed Services Easement | |
| Indicative Parking Access Location | |

ADDITIONAL NOTES:

Allotments used as Multiple Residential Allotments in accordance with the approved Plan of Development may have a reduced primary road setback to 3.0metres as noted on the Plan of Development Table.

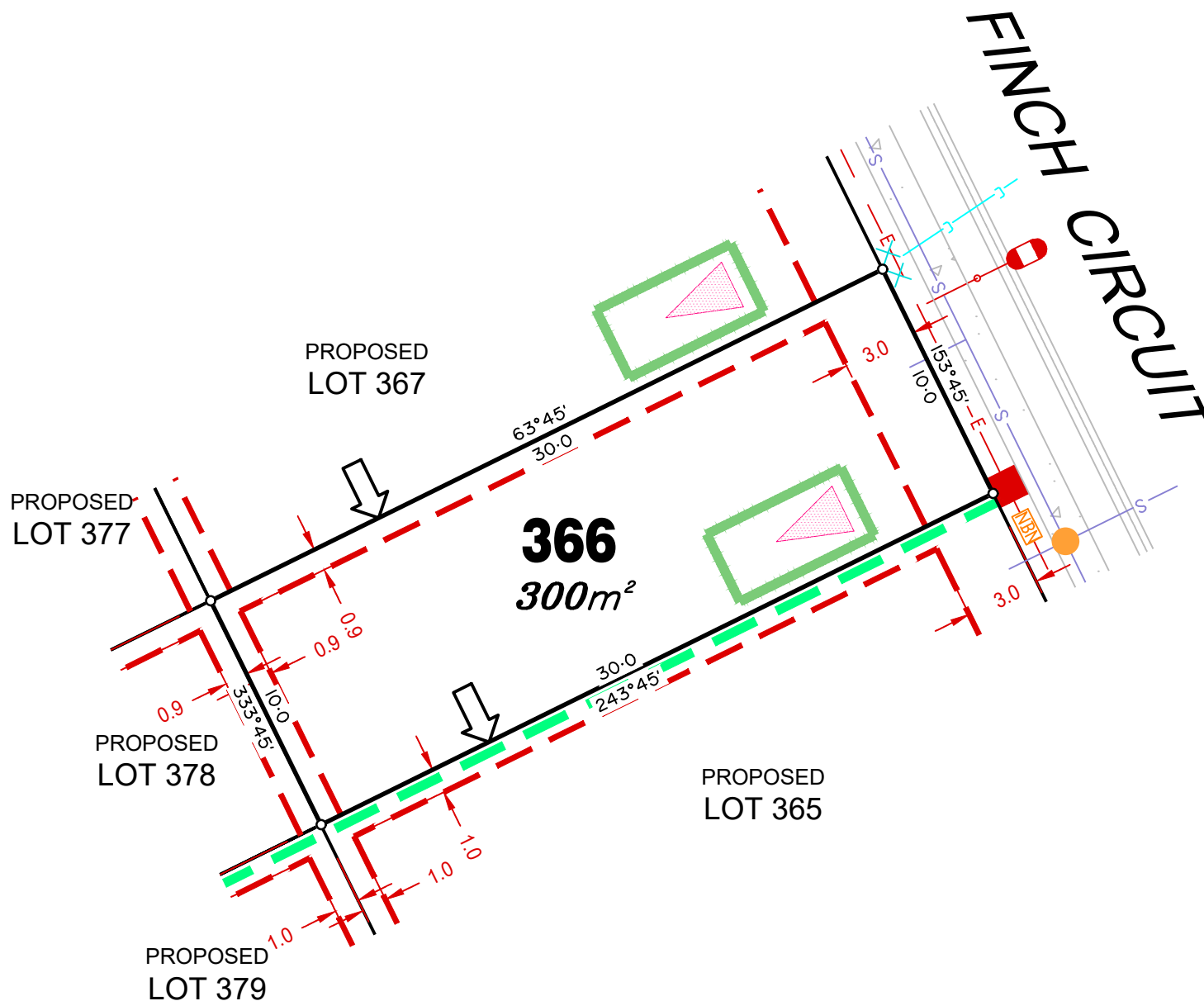
Compaction of any fill material placed on this site shall be completed to level one inspection and testing services in accordance with AS3798-2007.

Location of sewer, roofwater, stormwater, water reticulation and electricity lines, manholes and pits are those shown on engineering design drawings, supplied by Bradlees Meinhardt, and may differ from the as-constructed location.

Plan of Development information Supplied by RPS Group PLC.

Copyright © Veris Australia Pty Ltd
7th November 2019.

Plot Date: 14 Nov, 2019
Computer File Ref: 30109-St1R-SP revC.dwg



LEGEND

| | |
|-----------------------------------------------------------------|--|
| Rock Retaining Wall shown as:- | |
| Sleeper Retaining Wall shown as:- | |
| Landscape Retaining Wall shown as:- | |
| Sewer line | |
| Sewer Manhole | |
| Roofwater Drainage line and Catch Pit | |
| Stormwater Drainage Line | |
| Stormwater Manhole | |
| Stormwater Pit | |
| Water Main | |
| Water Conduit | |
| Water Service Point of Entry | |
| Underground Electricity, Street Light, Electricity Pillar & NBN | |
| Developer Fencing | |
| Concrete Pathway | |
| Landscape Street Tree | |
| Zero Setback Building Line | |
| Indicative Building Envelope | |
| Proposed Services Easement | |
| Indicative Parking Access Location | |

ADDITIONAL NOTES:

Allotments used as Multiple Residential Allotments in accordance with the approved Plan of Development may have a reduced primary road setback to 3.0metres as noted on the Plan of Development Table.

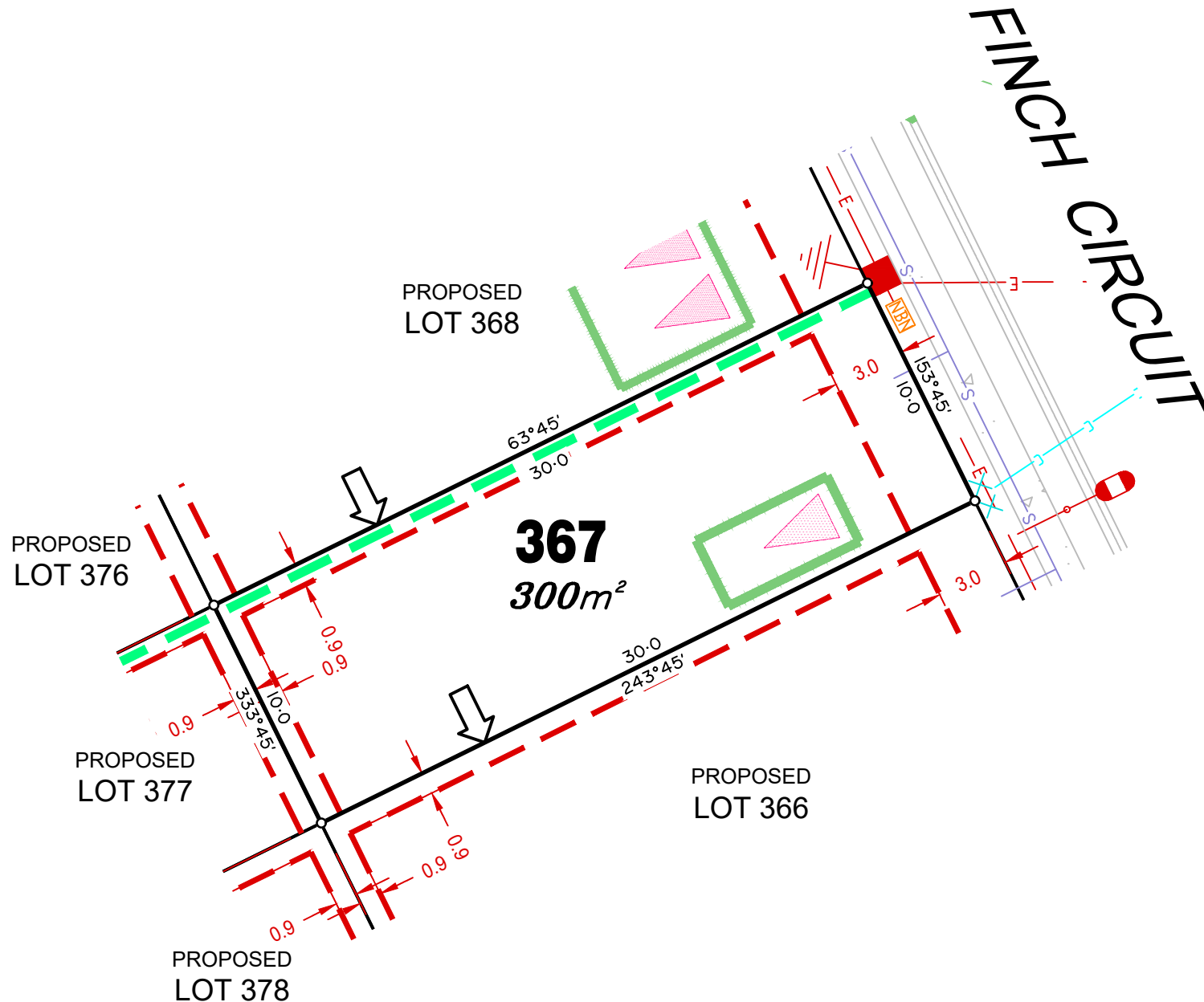
Compaction of any fill material placed on this site shall be completed to level one inspection and testing services in accordance with AS3798-2007.

Location of sewer, roofwater, stormwater, water reticulation and electricity lines, manholes and pits are those shown on engineering design drawings, supplied by Bradlees Meinhardt, and may differ from the as-constructed location.

Plan of Development information Supplied by RPS Group PLC.

Copyright © Veris Australia Pty Ltd
7th November 2019.

Plot Date: 14 Nov, 2019
Computer File Ref: 30109-St1R-SP revC.dwg



LEGEND

| | |
|-----------------------------------------------------------------|--|
| Rock Retaining Wall shown as:- | |
| Sleeper Retaining Wall shown as:- | |
| Landscape Retaining Wall shown as:- | |
| Sewer line | |
| Sewer Manhole | |
| Roofwater Drainage line and Catch Pit | |
| Stormwater Drainage Line | |
| Stormwater Manhole | |
| Stormwater Pit | |
| Water Main | |
| Water Conduit | |
| Water Service Point of Entry | |
| Underground Electricity, Street Light, Electricity Pillar & NBN | |
| Developer Fencing | |
| Concrete Pathway | |
| Landscape Street Tree | |
| Zero Setback Building Line | |
| Indicative Building Envelope | |
| Proposed Services Easement | |
| Indicative Parking Access Location | |

ADDITIONAL NOTES:

Allotments used as Multiple Residential Allotments in accordance with the approved Plan of Development may have a reduced primary road setback to 3.0metres as noted on the Plan of Development Table.

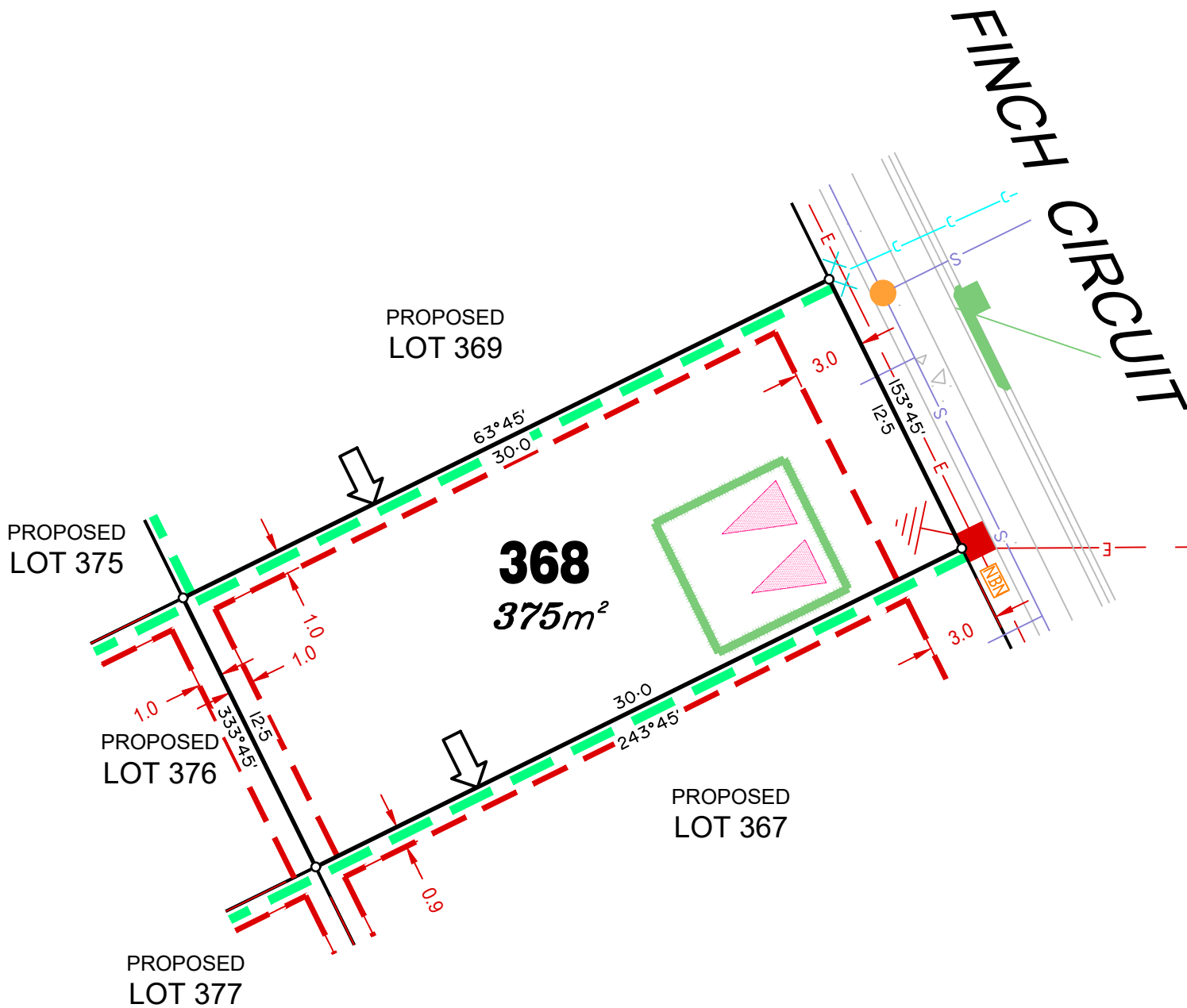
Compaction of any fill material placed on this site shall be completed to level one inspection and testing services in accordance with AS3798-2007.

Location of sewer, roofwater, stormwater, water reticulation and electricity lines, manholes and pits are those shown on engineering design drawings, supplied by Bradlees Meinhardt, and may differ from the as-constructed location.

Plan of Development information Supplied by RPS Group PLC.

Copyright © Veris Australia Pty Ltd
7th November 2019.

Plot Date: 14 Nov, 2019
Computer File Ref: 30109-St1R-SP revC.dwg



LEGEND

| | |
|-----------------------------------------------------------------|--|
| Rock Retaining Wall shown as:- | |
| Sleeper Retaining Wall shown as:- | |
| Landscape Retaining Wall shown as:- | |
| Sewer line | |
| Sewer Manhole | |
| Roofwater Drainage line and Catch Pit | |
| Stormwater Drainage Line | |
| Stormwater Manhole | |
| Stormwater Pit | |
| Water Main | |
| Water Conduit | |
| Water Service Point of Entry | |
| Underground Electricity, Street Light, Electricity Pillar & NBN | |
| Developer Fencing | |
| Concrete Pathway | |
| Landscape Street Tree | |
| Zero Setback Building Line | |
| Indicative Building Envelope | |
| Proposed Services Easement | |
| Indicative Parking Access Location | |

ADDITIONAL NOTES:

Allotments used as Multiple Residential Allotments in accordance with the approved Plan of Development may have a reduced primary road setback to 3.0metres as noted on the Plan of Development Table.

Compaction of any fill material placed on this site shall be completed to level one inspection and testing services in accordance with AS3798-2007.

Location of sewer, roofwater, stormwater, water reticulation and electricity lines, manholes and pits are those shown on engineering design drawings, supplied by Bradlees Meinhardt, and may differ from the as-constructed location.

Plan of Development information Supplied by RPS Group PLC.

Copyright © Veris Australia Pty Ltd
7th November 2019.

Plot Date: 14 Nov, 2019
Computer File Ref: 30109-St1R-SP revC.dwg

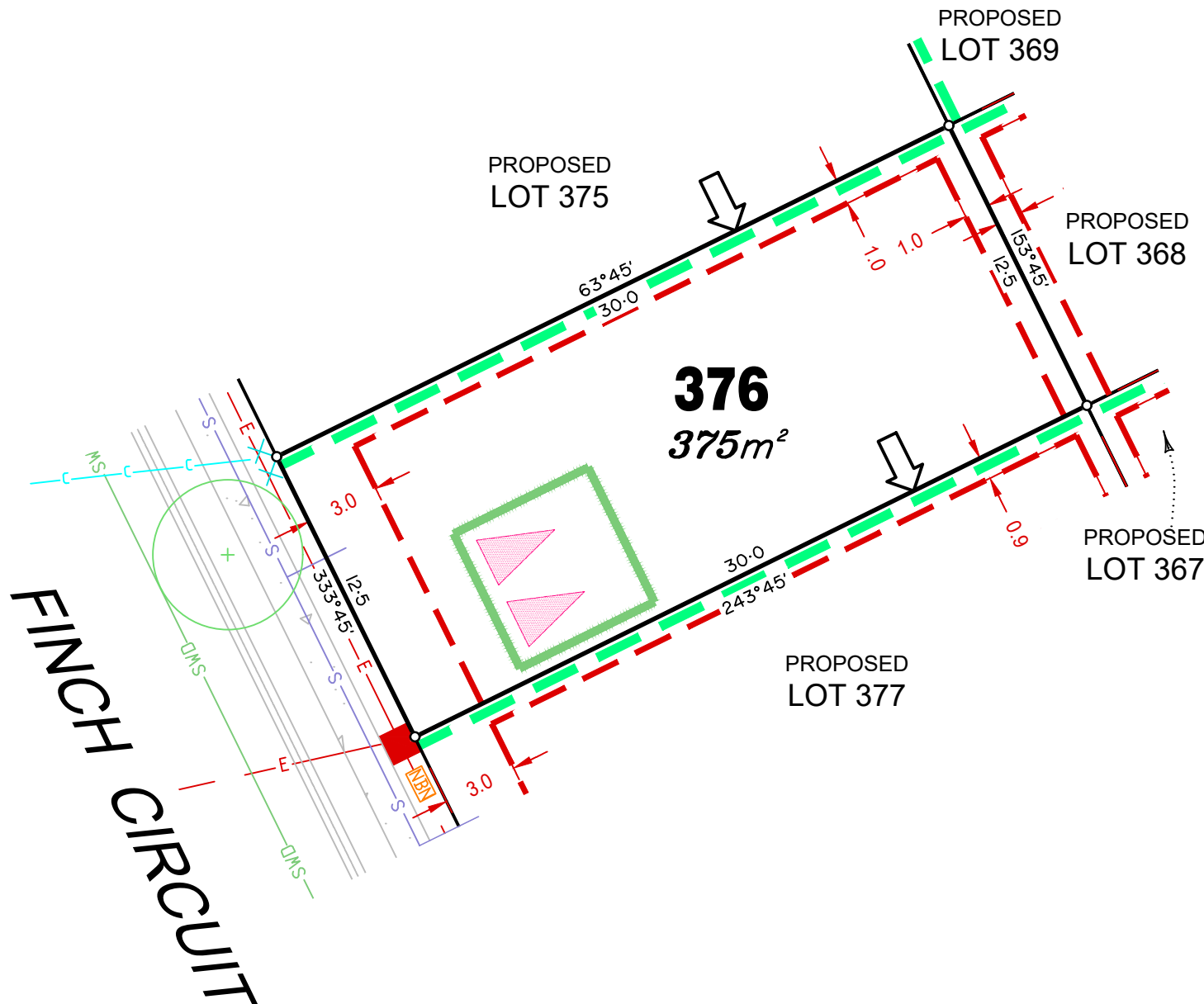
| | |
|-----------------------------------------------------------------|--|
| Rock Retaining Wall shown as:- | |
| Sleeper Retaining Wall shown as:- | |
| Landscape Retaining Wall shown as:- | |
| Sewer line | |
| Sewer Manhole | |
| Roofwater Drainage line and Catch Pit | |
| Stormwater Drainage Line | |
| Stormwater Manhole | |
| Stormwater Pit | |
| Water Main | |
| Water Conduit | |
| Water Service Point of Entry | |
| Underground Electricity, Street Light, Electricity Pillar & NBN | |
| Developer Fencing | |
| Concrete Pathway | |
| Landscape Street Tree | |
| Zero Setback Building Line | |
| Indicative Building Envelope | |
| Proposed Services Easement | |
| Indicative Parking Access Location | |

Allotments used as Multiple Residential Allotments in accordance with the approved Plan of Development may have a reduced primary road setback to 3.0metres as noted on the Plan of Development Table.

Location of sewer, roofwater, stormwater, water reticulation and electricity lines, manholes and pits are those shown on engineering design drawings, supplied by Bradlees Meinhardt, and may differ from the as-constructed location.

Copyright © Veris Australia Pty Ltd
7th November 2019.

Plot Date: 14 Nov, 2019
Computer File Ref: 30109-St1R-SP revC.dwg



LEGEND

| | |
|-----------------------------------------------------------------|--|
| Rock Retaining Wall shown as:- | |
| Sleeper Retaining Wall shown as:- | |
| Landscape Retaining Wall shown as:- | |
| Sewer line | |
| Sewer Manhole | |
| Roofwater Drainage line and Catch Pit | |
| Stormwater Drainage Line | |
| Stormwater Manhole | |
| Stormwater Pit | |
| Water Main | |
| Water Conduit | |
| Water Service Point of Entry | |
| Underground Electricity, Street Light, Electricity Pillar & NBN | |
| Developer Fencing | |
| Concrete Pathway | |
| Landscape Street Tree | |
| Zero Setback Building Line | |
| Indicative Building Envelope | |
| Proposed Services Easement | |
| Indicative Parking Access Location | |

ADDITIONAL NOTES:

Allotments used as Multiple Residential Allotments in accordance with the approved Plan of Development may have a reduced primary road setback to 3.0metres as noted on the Plan of Development Table.

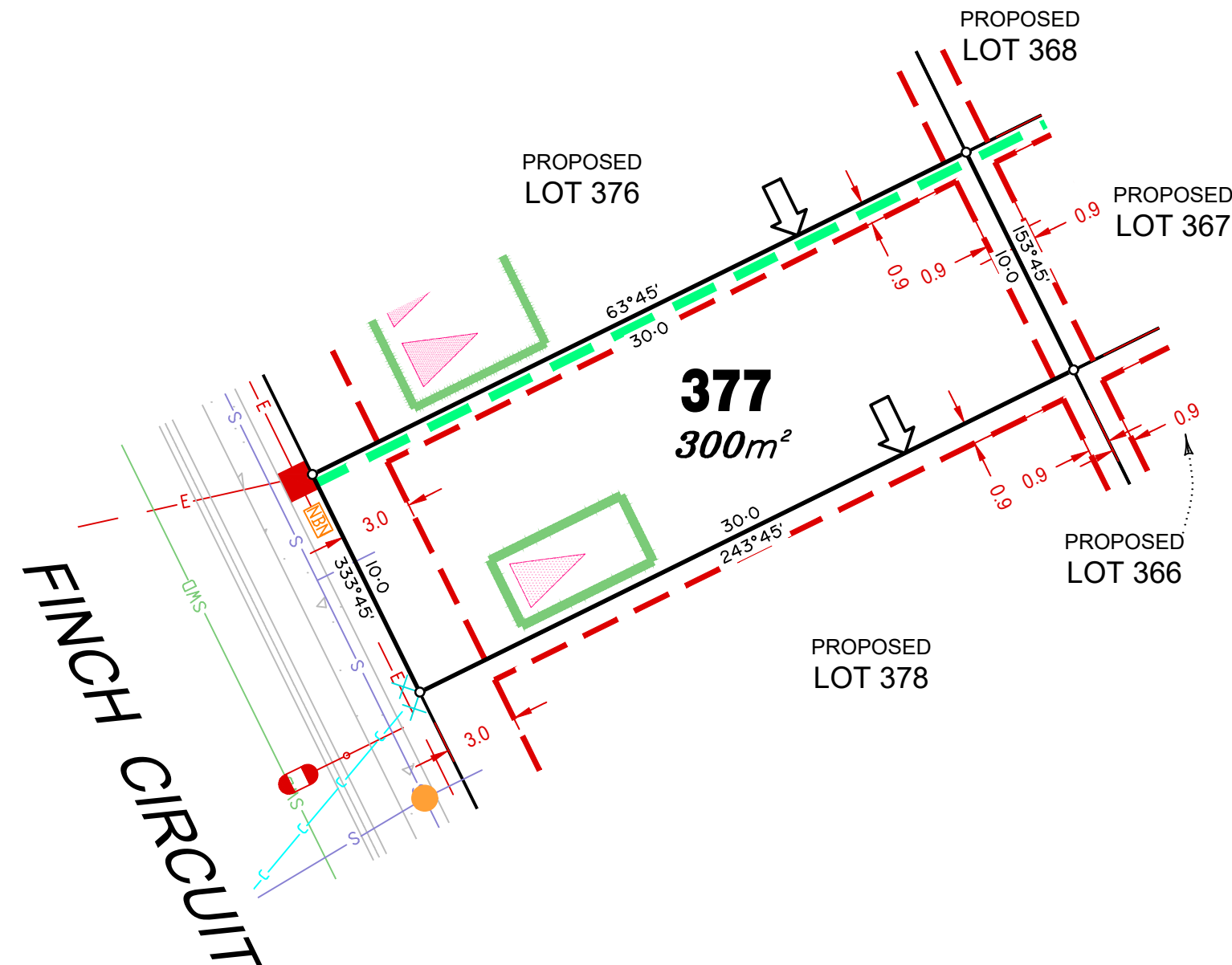
Compaction of any fill material placed on this site shall be completed to level one inspection and testing services in accordance with AS3798-2007.

Location of sewer, roofwater, stormwater, water reticulation and electricity lines, manholes and pits are those shown on engineering design drawings, supplied by Bradlees Meinhardt, and may differ from the as-constructed location.

Plan of Development information Supplied by RPS Group PLC.

Copyright © Veris Australia Pty Ltd
7th November 2019.

Plot Date: 14 Nov, 2019
Computer File Ref: 30109-St1R-SP revC.dwg



FINCH
CIRCUIT

PROPOSED
LOT 377

PROPOSED
LOT 367

PROPOSED
LOT 366

PROPOSED
LOT 365

PROPOSED
LOT 379

378
300m²

LEGEND

Rock Retaining Wall shown as:-



Sleeper Retaining Wall shown as:-



Landscape Retaining Wall shown as:-



Sewer line



Sewer Manhole



Roofwater Drainage line and



Catch Pit

Stormwater Drainage Line



Stormwater Manhole



Stormwater Pit



Water Main



Water Conduit



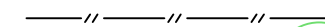
Water Service Point of Entry



Underground Electricity, Street Light,
Electricity Pillar & NBN



Developer Fencing



Concrete Pathway



Landscape Street Tree



Zero Setback Building Line



Indicative Building Envelope



Proposed Services Easement



Indicative Parking Access Location



ADDITIONAL NOTES:

Allotments used as Multiple Residential Allotments in accordance with the approved Plan of Development may have a reduced primary road setback to 3.0metres as noted on the Plan of Development Table.

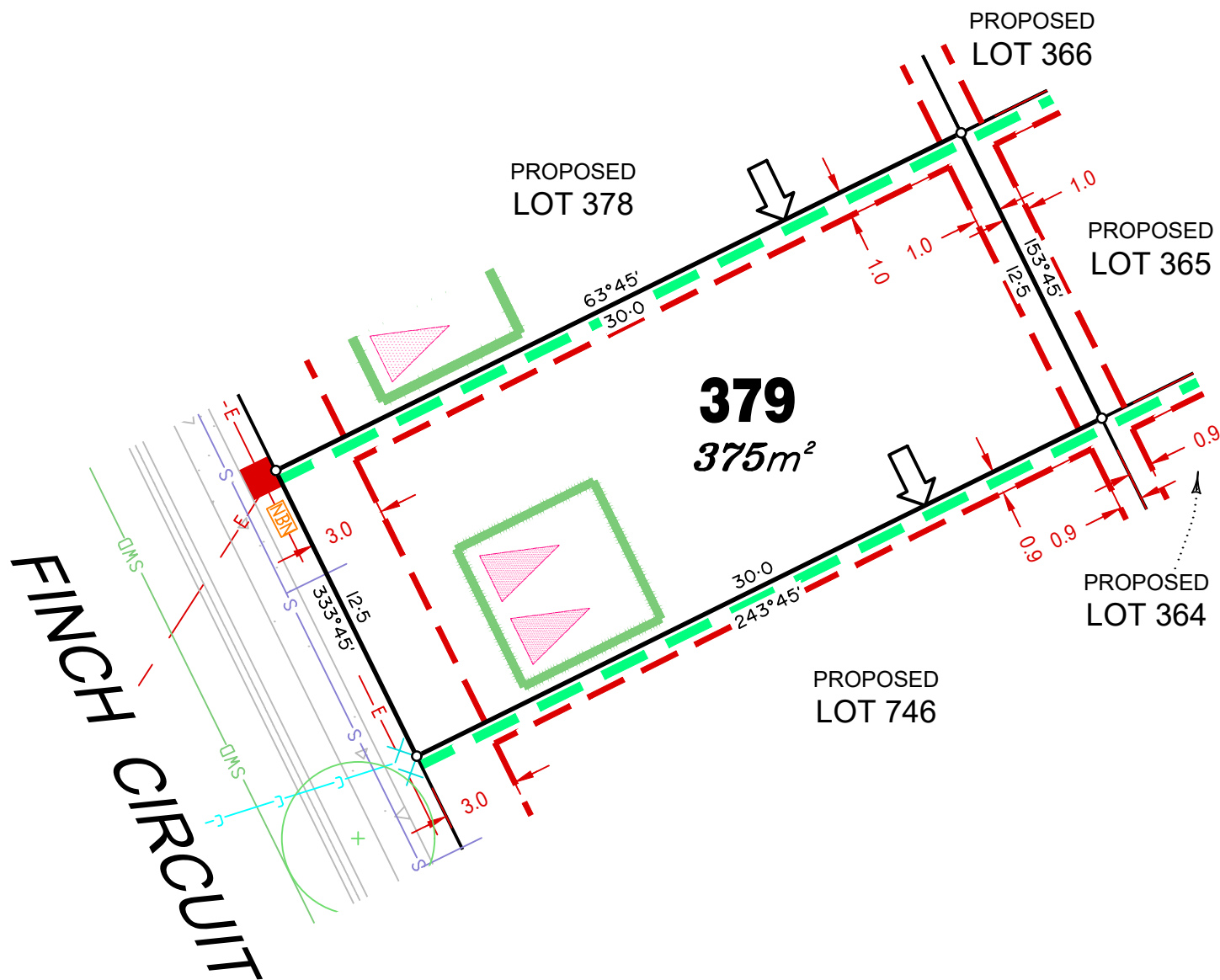
Compaction of any fill material placed on this site shall be completed to level one inspection and testing services in accordance with AS3798-2007.

Location of sewer, roofwater, stormwater, water reticulation and electricity lines, manholes and pits are those shown on engineering design drawings, supplied by Bradlees Meinhardt, and may differ from the as-constructed location.

Plan of Development information Supplied by RPS Group PLC.

Copyright © Veris Australia Pty Ltd
7th November 2019.

Plot Date: 14 Nov, 2019
Computer File Ref: 30109-St1R-SP revC.dwg



LEGEND

| | |
|-----------------------------------------------------------------|--|
| Rock Retaining Wall shown as:- | |
| Sleeper Retaining Wall shown as:- | |
| Landscape Retaining Wall shown as:- | |
| Sewer line | |
| Sewer Manhole | |
| Roofwater Drainage line and Catch Pit | |
| Stormwater Drainage Line | |
| Stormwater Manhole | |
| Stormwater Pit | |
| Water Main | |
| Water Conduit | |
| Water Service Point of Entry | |
| Underground Electricity, Street Light, Electricity Pillar & NBN | |
| Developer Fencing | |
| Concrete Pathway | |
| Landscape Street Tree | |
| Zero Setback Building Line | |
| Indicative Building Envelope | |
| Proposed Services Easement | |
| Indicative Parking Access Location | |

ADDITIONAL NOTES:

Allotments used as Multiple Residential Allotments in accordance with the approved Plan of Development may have a reduced primary road setback to 3.0metres as noted on the Plan of Development Table.

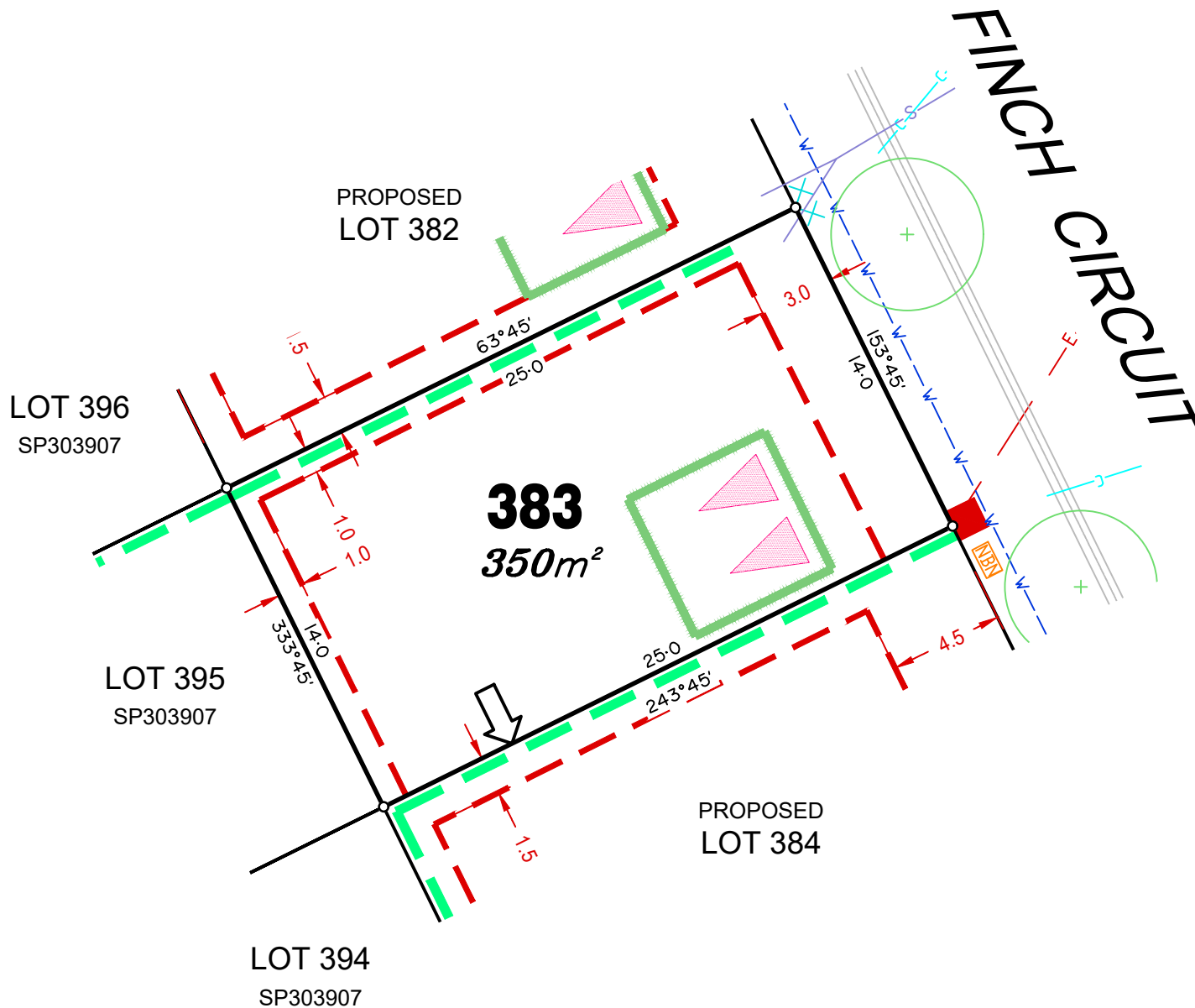
Compaction of any fill material placed on this site shall be completed to level one inspection and testing services in accordance with AS3798-2007.

Location of sewer, roofwater, stormwater, water reticulation and electricity lines, manholes and pits are those shown on engineering design drawings, supplied by Bradlees Meinhardt, and may differ from the as-constructed location.

Plan of Development information Supplied by RPS Group PLC.

Copyright © Veris Australia Pty Ltd
7th November 2019.

Plot Date: 14 Nov, 2019
Computer File Ref: 30109-St1R-SP revC.dwg



LEGEND

| | |
|-----------------------------------------------------------------|--|
| Rock Retaining Wall shown as:- | |
| Sleeper Retaining Wall shown as:- | |
| Landscape Retaining Wall shown as:- | |
| Sewer line | |
| Sewer Manhole | |
| Roofwater Drainage line and Catch Pit | |
| Stormwater Drainage Line | |
| Stormwater Manhole | |
| Stormwater Pit | |
| Water Main | |
| Water Conduit | |
| Water Service Point of Entry | |
| Underground Electricity, Street Light, Electricity Pillar & NBN | |
| Developer Fencing | |
| Concrete Pathway | |
| Landscape Street Tree | |
| Zero Setback Building Line | |
| Indicative Building Envelope | |
| Proposed Services Easement | |
| Indicative Parking Access Location | |

ADDITIONAL NOTES:

Allotments used as Multiple Residential Allotments in accordance with the approved Plan of Development may have a reduced primary road setback to 3.0metres as noted on the Plan of Development Table.

Compaction of any fill material placed on this site shall be completed to level one inspection and testing services in accordance with AS3798-2007.

Location of sewer, roofwater, stormwater, water reticulation and electricity lines, manholes and pits are those shown on engineering design drawings, supplied by Bradlees Meinhardt, and may differ from the as-constructed location.

Plan of Development information Supplied by RPS Group PLC.

Copyright © Veris Australia Pty Ltd
7th November 2019.

Plot Date: 14 Nov, 2019
Computer File Ref: 30109-St1R-SP revC.dwg



LEGEND

| | |
|-----------------------------------------------------------------|--|
| Rock Retaining Wall shown as:- | |
| Sleeper Retaining Wall shown as:- | |
| Landscape Retaining Wall shown as:- | |
| Sewer line | |
| Sewer Manhole | |
| Roofwater Drainage line and Catch Pit | |
| Stormwater Drainage Line | |
| Stormwater Manhole | |
| Stormwater Pit | |
| Water Main | |
| Water Conduit | |
| Water Service Point of Entry | |
| Underground Electricity, Street Light, Electricity Pillar & NBN | |
| Developer Fencing | |
| Concrete Pathway | |
| Landscape Street Tree | |
| Zero Setback Building Line | |
| Indicative Building Envelope | |
| Proposed Services Easement | |
| Indicative Parking Access Location | |

ADDITIONAL NOTES:

Allotments used as Multiple Residential Allotments in accordance with the approved Plan of Development may have a reduced primary road setback to 3.0metres as noted on the Plan of Development Table.

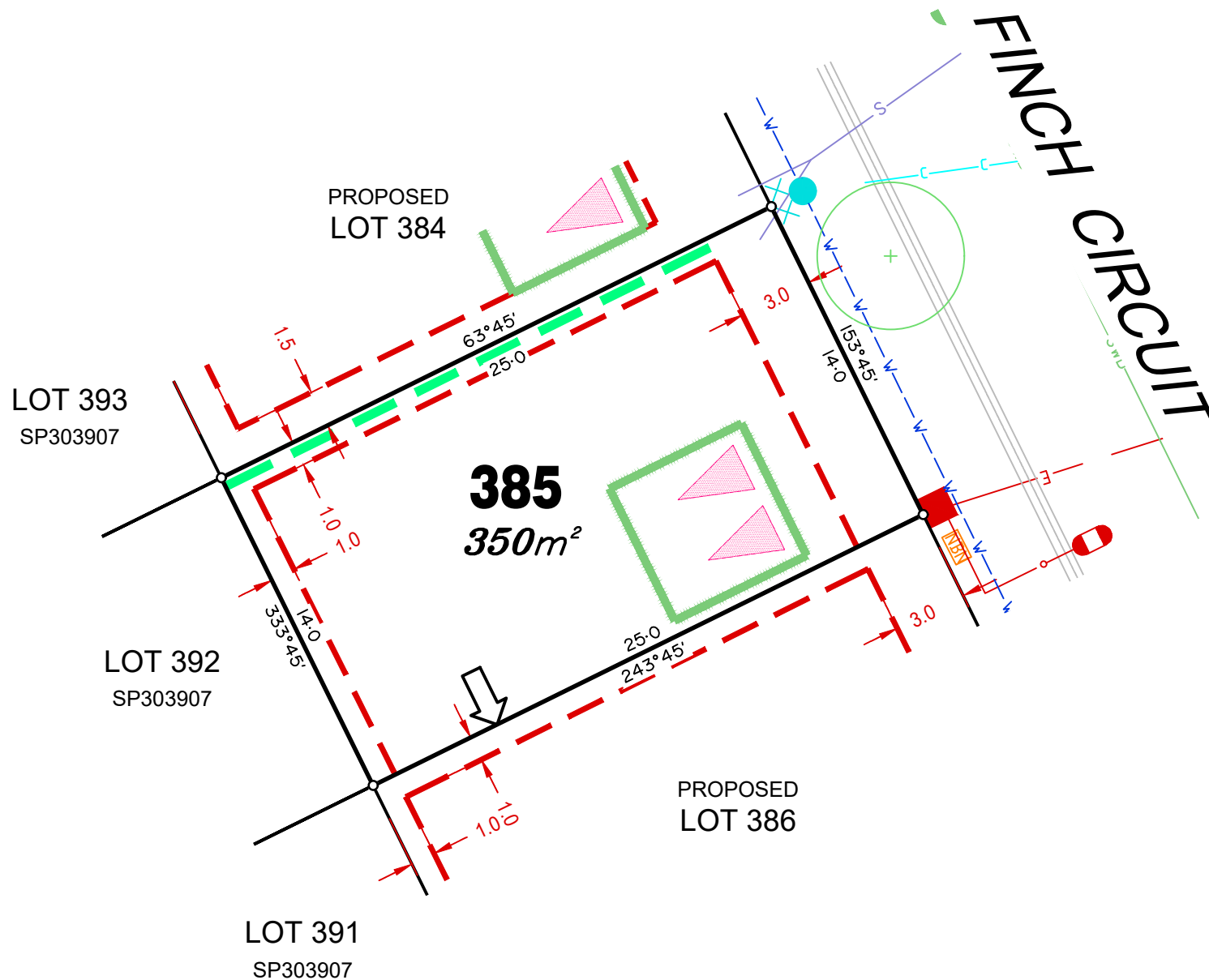
Compaction of any fill material placed on this site shall be completed to level one inspection and testing services in accordance with AS3798-2007.

Location of sewer, roofwater, stormwater, water reticulation and electricity lines, manholes and pits are those shown on engineering design drawings, supplied by Bradlees Meinhardt, and may differ from the as-constructed location.

Plan of Development information Supplied by RPS Group PLC.

Copyright © Veris Australia Pty Ltd
7th November 2019.

Plot Date: 14 Nov, 2019
Computer File Ref: 30109-St1R-SP revC.dwg



LEGEND

| | |
|-----------------------------------------------------------------|--|
| Rock Retaining Wall shown as:- | |
| Sleeper Retaining Wall shown as:- | |
| Landscape Retaining Wall shown as:- | |
| Sewer line | |
| Sewer Manhole | |
| Roofwater Drainage line and Catch Pit | |
| Stormwater Drainage Line | |
| Stormwater Manhole | |
| Stormwater Pit | |
| Water Main | |
| Water Conduit | |
| Water Service Point of Entry | |
| Underground Electricity, Street Light, Electricity Pillar & NBN | |
| Developer Fencing | |
| Concrete Pathway | |
| Landscape Street Tree | |
| Zero Setback Building Line | |
| Indicative Building Envelope | |
| Proposed Services Easement | |
| Indicative Parking Access Location | |

ADDITIONAL NOTES:

Allotments used as Multiple Residential Allotments in accordance with the approved Plan of Development may have a reduced primary road setback to 3.0metres as noted on the Plan of Development Table.

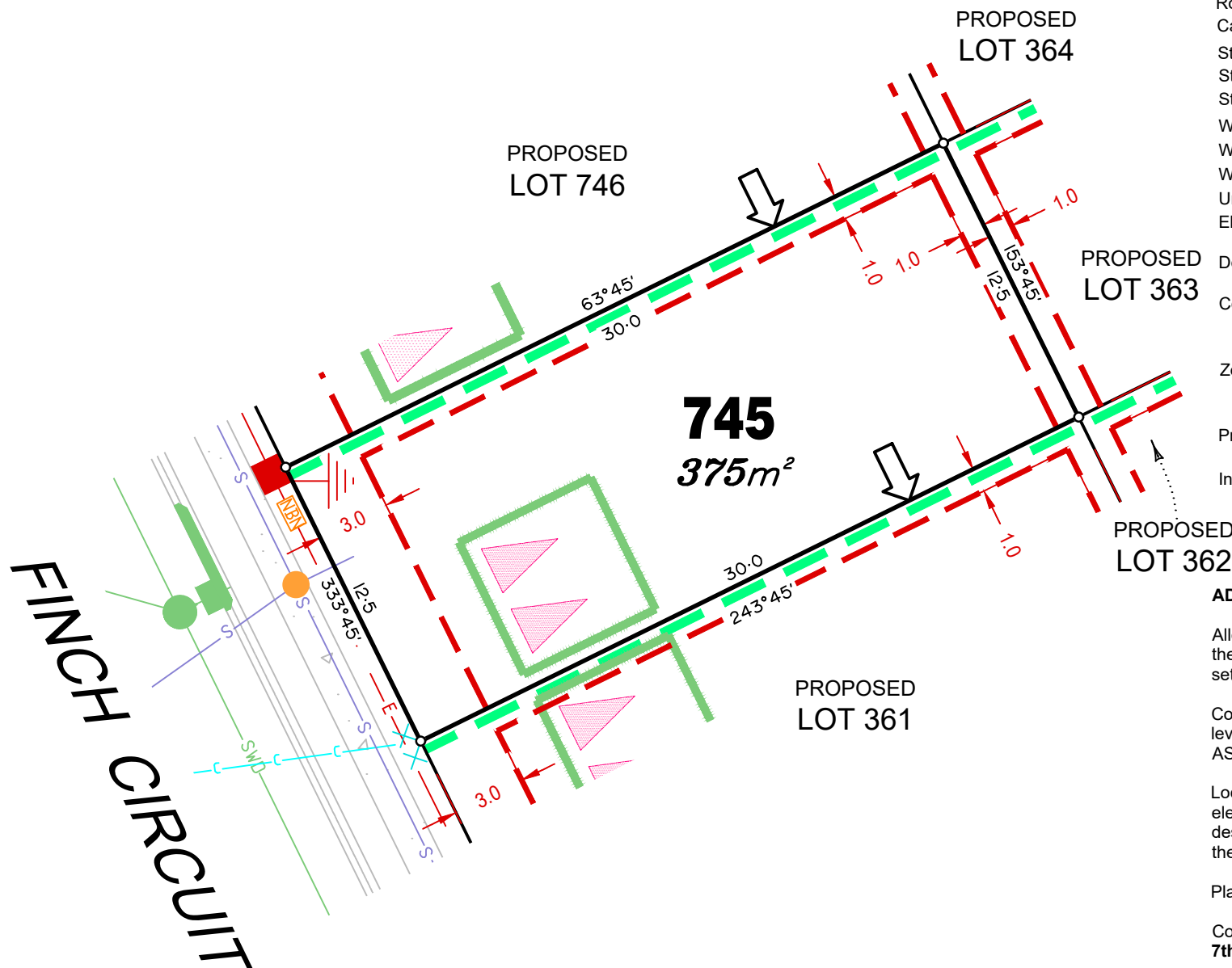
Compaction of any fill material placed on this site shall be completed to level one inspection and testing services in accordance with AS3798-2007.

Location of sewer, roofwater, stormwater, water reticulation and electricity lines, manholes and pits are those shown on engineering design drawings, supplied by Bradlees Meinhardt, and may differ from the as-constructed location.

Plan of Development information Supplied by RPS Group PLC.

Copyright © Veris Australia Pty Ltd
7th November 2019.

Plot Date: 14 Nov, 2019
Computer File Ref: 30109-St1R-SP revC.dwg



LEGEND

| | |
|-----------------------------------------------------------------|--|
| Rock Retaining Wall shown as:- | |
| Sleeper Retaining Wall shown as:- | |
| Landscape Retaining Wall shown as:- | |
| Sewer line | |
| Sewer Manhole | |
| Roofwater Drainage line and Catch Pit | |
| Stormwater Drainage Line | |
| Stormwater Manhole | |
| Stormwater Pit | |
| Water Main | |
| Water Conduit | |
| Water Service Point of Entry | |
| Underground Electricity, Street Light, Electricity Pillar & NBN | |
| Developer Fencing | |
| Concrete Pathway | |
| Landscape Street Tree | |
| Zero Setback Building Line | |
| Indicative Building Envelope | |
| Proposed Services Easement | |
| Indicative Parking Access Location | |

ADDITIONAL NOTES:

Allotments used as Multiple Residential Allotments in accordance with the approved Plan of Development may have a reduced primary road setback to 3.0metres as noted on the Plan of Development Table.

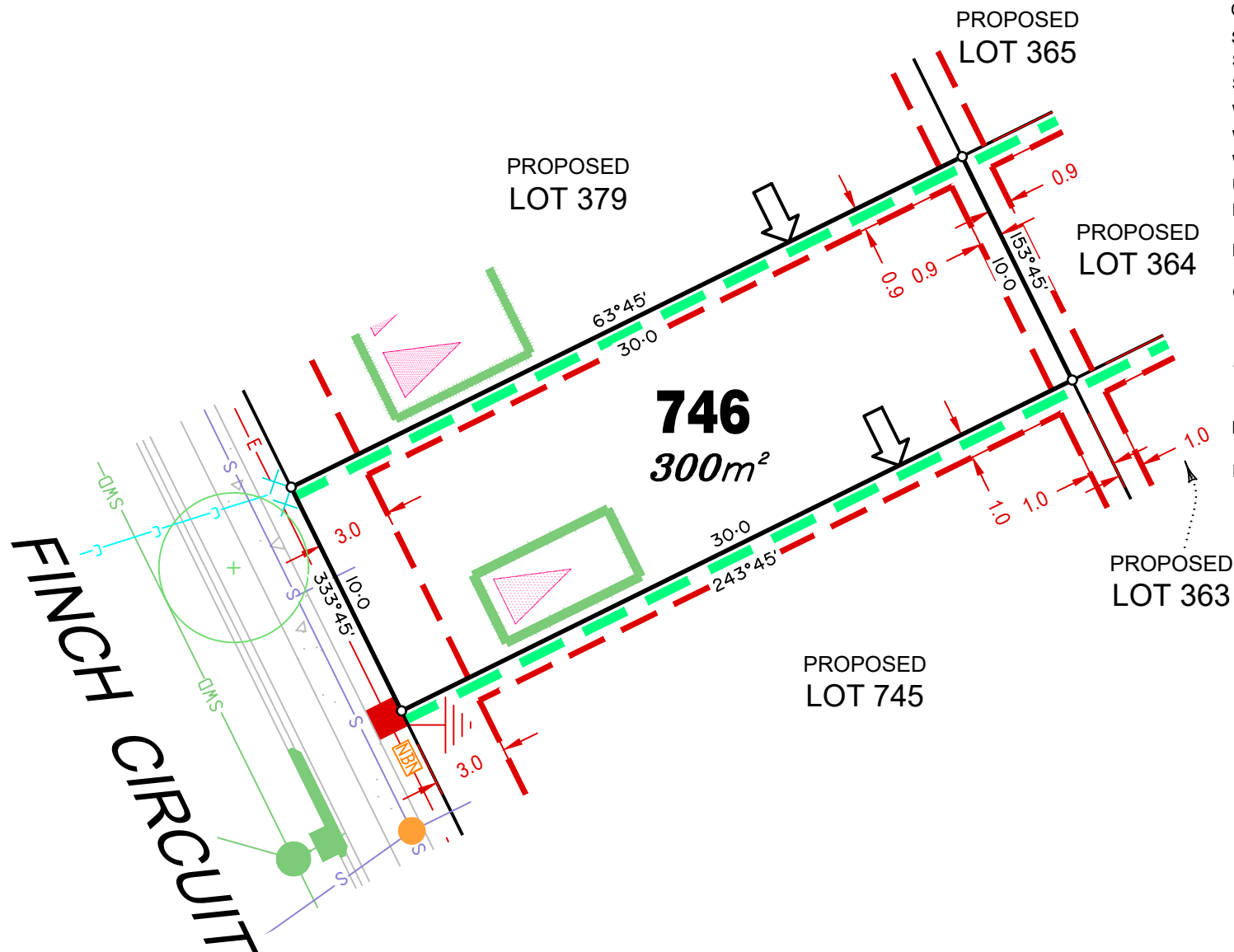
Compaction of any fill material placed on this site shall be completed to level one inspection and testing services in accordance with AS3798-2007.

Location of sewer, roofwater, stormwater, water reticulation and electricity lines, manholes and pits are those shown on engineering design drawings, supplied by Bradlees Meinhardt, and may differ from the as-constructed location.

Plan of Development information Supplied by RPS Group PLC.

Copyright © Veris Australia Pty Ltd
7th November 2019.

Plot Date: 14 Nov, 2019
Computer File Ref: 30109-St1R-SP revC.dwg



LEGEND

Rock Retaining Wall shown as:-



Sleeper Retaining Wall shown as:-



Landscape Retaining Wall shown as:-



Sewer line



Sewer Manhole



Roofwater Drainage line and



Catch Pit

Stormwater Drainage Line



Stormwater Manhole



Stormwater Pit



Water Main



Water Conduit



Water Service Point of Entry

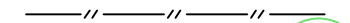


Underground Electricity, Street Light,



Electricity Pillar & NBN

Developer Fencing



Concrete Pathway



Landscape Street Tree



Zero Setback Building Line



Indicative Building Envelope



Proposed Services Easement



Indicative Parking Access Location



ADDITIONAL NOTES:

Allotments used as Multiple Residential Allotments in accordance with the approved Plan of Development may have a reduced primary road setback to 3.0metres as noted on the Plan of Development Table.

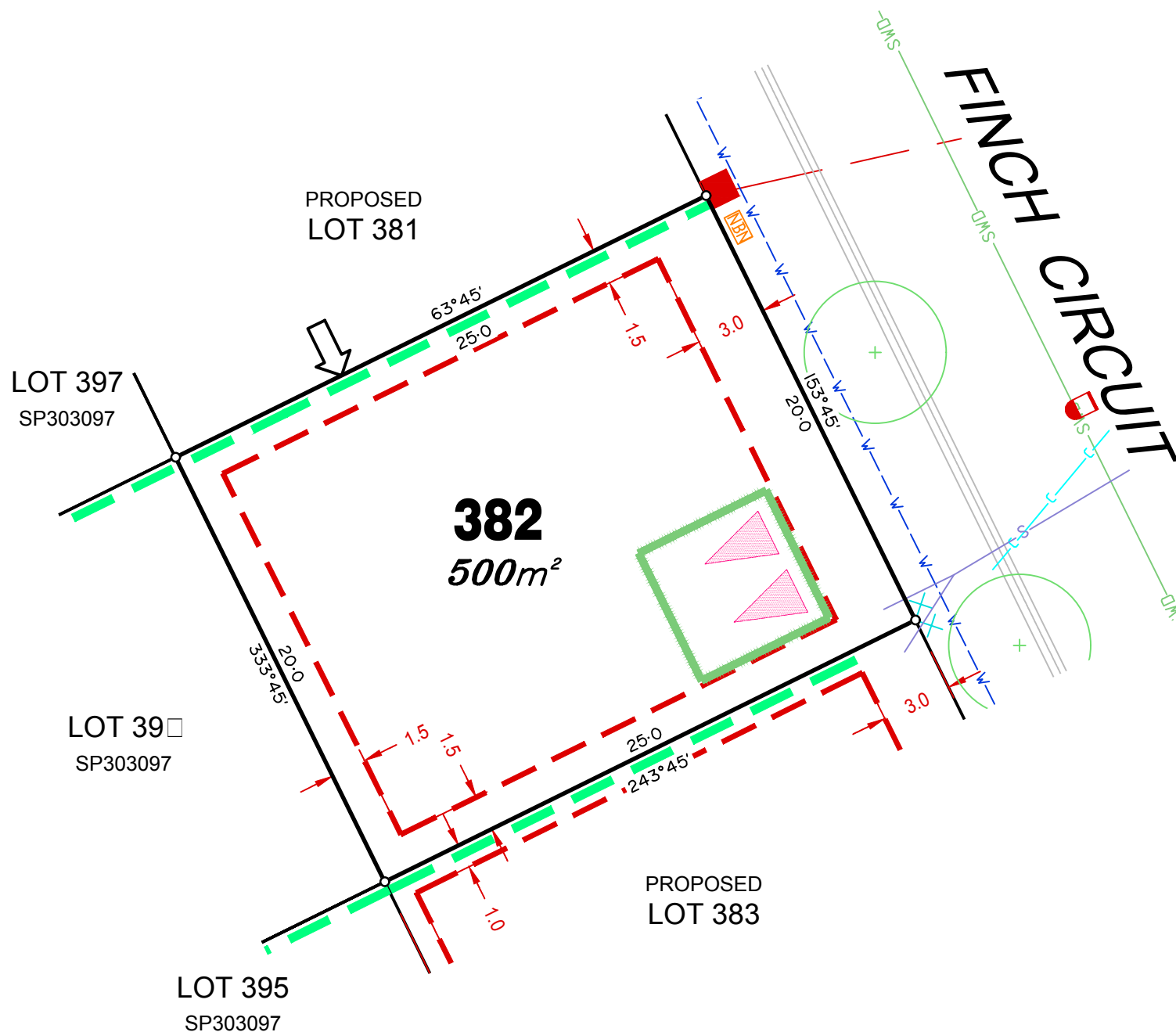
Compaction of any fill material placed on this site shall be completed to level one inspection and testing services in accordance with AS3798-2007.

Location of sewer, roofwater, stormwater, water reticulation and electricity lines, manholes and pits are those shown on engineering design drawings, supplied by Bradlees Meinhardt, and may differ from the as-constructed location.

Plan of Development information Supplied by RPS Group PLC.

Copyright © Veris Australia Pty Ltd
7th November 2019.

Plot Date: 14 Nov, 2019
Computer File Ref: 30109-St1R-SP revC.dwg



LEGEND

| | |
|-----------------------------------------------------------------|--|
| Rock Retaining Wall shown as:- | |
| Sleeper Retaining Wall shown as:- | |
| Landscape Retaining Wall shown as:- | |
| Sewer line | |
| Sewer Manhole | |
| Roofwater Drainage line and Catch Pit | |
| Stormwater Drainage Line | |
| Stormwater Manhole | |
| Stormwater Pit | |
| Water Main | |
| Water Conduit | |
| Water Service Point of Entry | |
| Underground Electricity, Street Light, Electricity Pillar & NBN | |
| Developer Fencing | |
| Concrete Pathway | |
| Landscape Street Tree | |
| Zero Setback Building Line | |
| Indicative Building Envelope | |
| Proposed Services Easement | |
| Indicative Parking Access Location | |

ADDITIONAL NOTES:

Allotments used as Multiple Residential Allotments in accordance with the approved Plan of Development may have a reduced primary road setback to 3.0metres as noted on the Plan of Development Table.

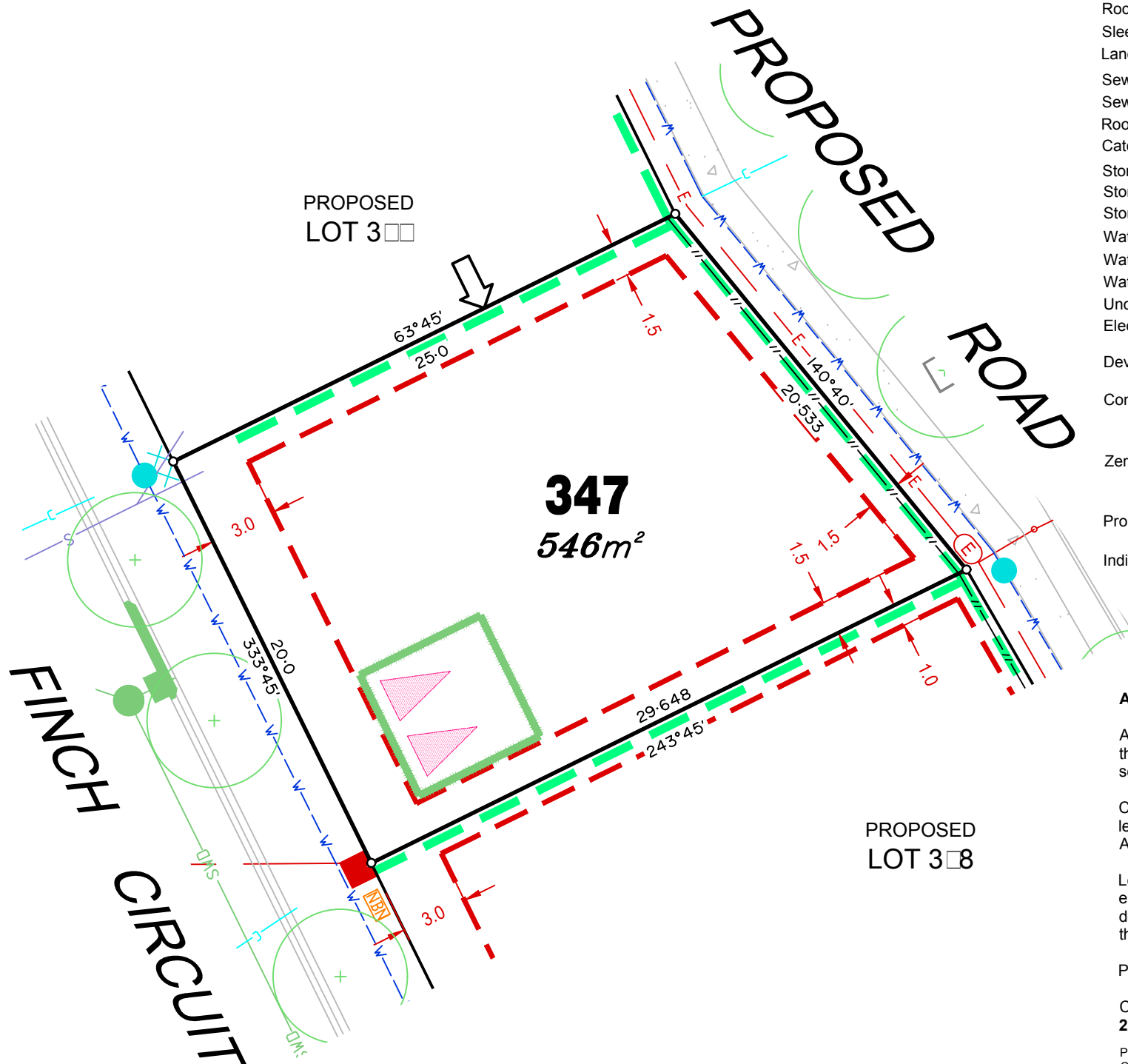
Compaction of any fill material placed on this site shall be completed to level one inspection and testing services in accordance with AS3798-2007.

Location of sewer, roofwater, stormwater, water reticulation and electricity lines, manholes and pits are those shown on engineering design drawings, supplied by Bradlees Meinhardt, and may differ from the as-constructed location.

Plan of Development information Supplied by RPS Group PLC.

Copyright © Veris Australia Pty Ltd
16 January 2020.

Plot Date: 1 Jan, 2020
Computer File Ref: 30109-ST1R-SP revD.dwg



LEGEND

| | |
|-----------------------------------------------------------------|--|
| Rock Retaining Wall shown as:- | |
| Sleeper Retaining Wall shown as:- | |
| Landscape Retaining Wall shown as:- | |
| Sewer line | |
| Sewer Manhole | |
| Roofwater Drainage line and Catch Pit | |
| Stormwater Drainage Line | |
| Stormwater Manhole | |
| Stormwater Pit | |
| Water Main | |
| Water Conduit | |
| Water Service Point of Entry | |
| Underground Electricity, Street Light, Electricity Pillar & NBN | |
| Developer Fencing | |
| Concrete Pathway | |
| Landscape Street Tree | |
| Zero Setback Building Line | |
| Indicative Building Envelope | |
| Proposed Services Easement | |
| Indicative Parking Access Location | |

ADDITIONAL NOTES:

Allotments used as Multiple Residential Allotments in accordance with the approved Plan of Development may have a reduced primary road setback to 3.0metres as noted on the Plan of Development Table.

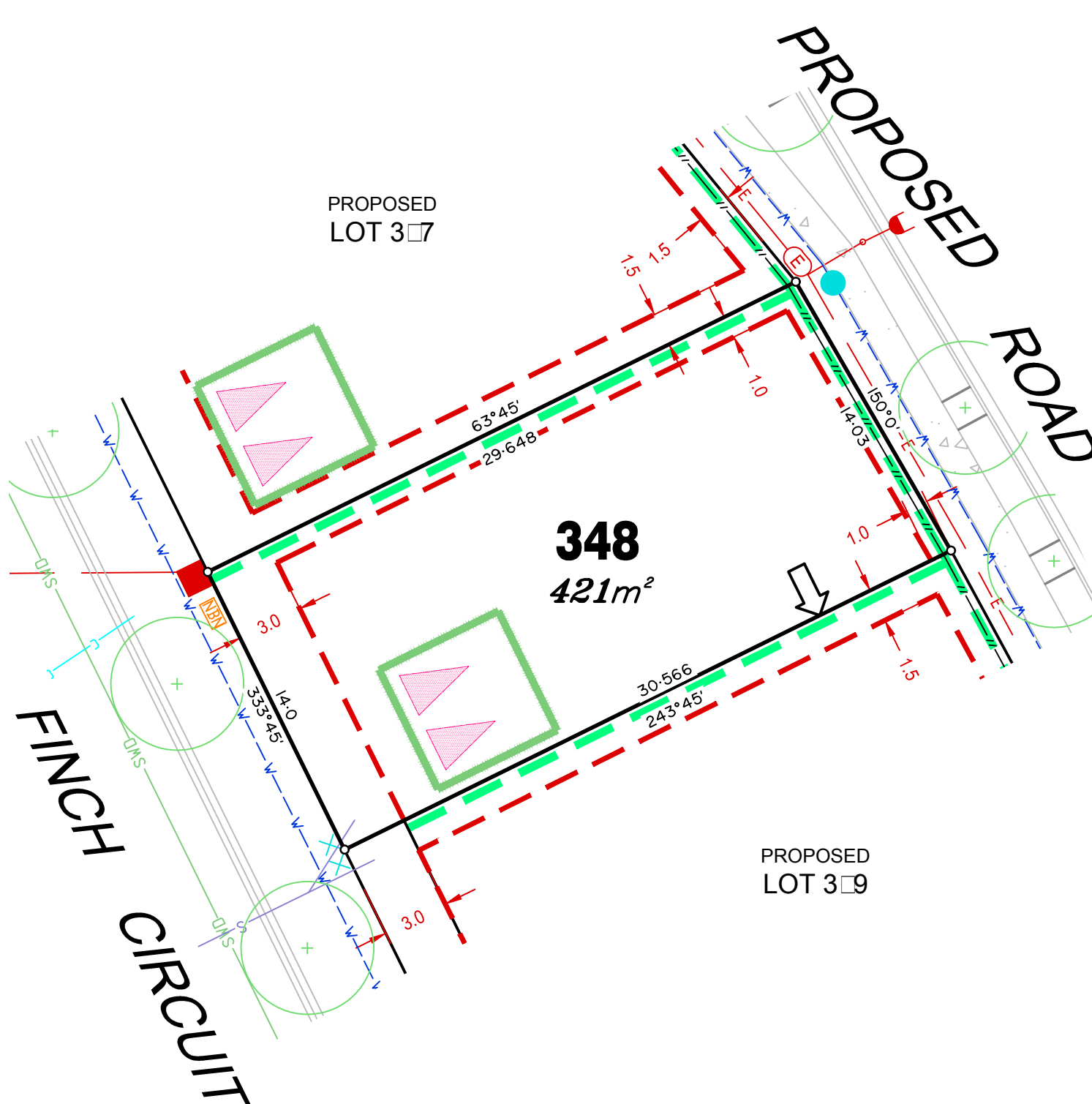
Compaction of any fill material placed on this site shall be completed to level one inspection and testing services in accordance with AS3798-2007.

Location of sewer, roofwater, stormwater, water reticulation and electricity lines, manholes and pits are those shown on engineering design drawings, supplied by Bradlees Meinhardt, and may differ from the as-constructed location.

Plan of Development information Supplied by RPS Group PLC.

Copyright © Veris Australia Pty Ltd
22 January 2020.

Plot Date: 22 Jan, 2020
Computer File Ref: 30109-St1R-SP revE.dwg



LEGEND

Rock Retaining Wall shown as:-
 Sleeper Retaining Wall shown as:-
 Landscape Retaining Wall shown as:-



Sewer line



Sewer Manhole



Roofwater Drainage line and
 Catch Pit



Stormwater Drainage Line



Stormwater Manhole



Stormwater Pit

Water Main



Water Conduit



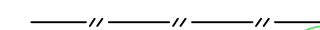
Water Service Point of Entry



Underground Electricity, Street Light,
 Electricity Pillar & NBN



Developer Fencing



Concrete Pathway



Landscape Street Tree



Zero Setback Building Line



Indicative Building Envelope



Proposed Services Easement



Indicative Parking Access Location



ADDITIONAL NOTES:

Allotments used as Multiple Residential Allotments in accordance with the approved Plan of Development may have a reduced primary road setback to 3.0metres as noted on the Plan of Development Table.

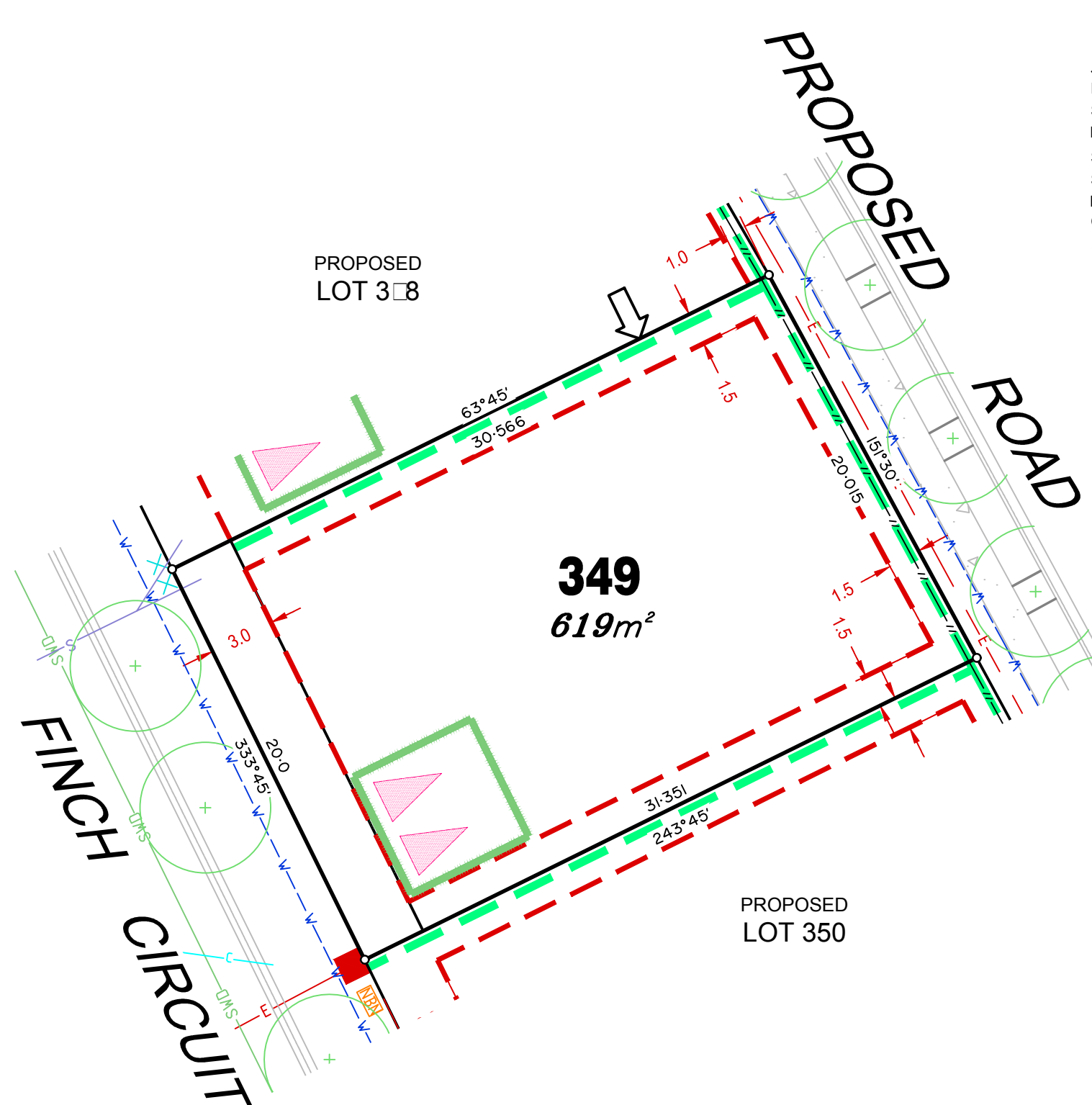
Compaction of any fill material placed on this site shall be completed to level one inspection and testing services in accordance with AS3798-2007.

Location of sewer, roofwater, stormwater, water reticulation and electricity lines, manholes and pits are those shown on engineering design drawings, supplied by Bradlees Meinhardt, and may differ from the as-constructed location.

Plan of Development information Supplied by RPS Group PLC.

Copyright © Veris Australia Pty Ltd
 22 January 2020.

Plot Date: 22 Jan, 2020
 Computer File Ref: 30109-St1R-SP revE.dwg



LEGEND

| | |
|-----------------------------------------------------------------|--|
| Rock Retaining Wall shown as:- | |
| Sleeper Retaining Wall shown as:- | |
| Landscape Retaining Wall shown as:- | |
| Sewer line | |
| Sewer Manhole | |
| Rooftop Drainage line and Catch Pit | |
| Stormwater Drainage Line | |
| Stormwater Manhole | |
| Stormwater Pit | |
| Water Main | |
| Water Conduit | |
| Water Service Point of Entry | |
| Underground Electricity, Street Light, Electricity Pillar & NBN | |
| Developer Fencing | |
| Concrete Pathway | |
| Landscape Street Tree | |
| Zero Setback Building Line | |
| Indicative Building Envelope | |
| Proposed Services Easement | |
| Indicative Parking Access Location | |

ADDITIONAL NOTES:

Allotments used as Multiple Residential Allotments in accordance with the approved Plan of Development may have a reduced primary road setback to 3.0metres as noted on the Plan of Development Table.

Compaction of any fill material placed on this site shall be completed to level one inspection and testing services in accordance with AS3798-2007.

Location of sewer, roofwater, stormwater, water reticulation and electricity lines, manholes and pits are those shown on engineering design drawings, supplied by Bradlees Meinhardt, and may differ from the as-constructed location.

Plan of Development information Supplied by RPS Group PLC.

Copyright © Veris Australia Pty Ltd
22 January 2020.

Plot Date: 22 Jan, 2020
Computer File Ref: 30109-St1R-SP revE.dwg

