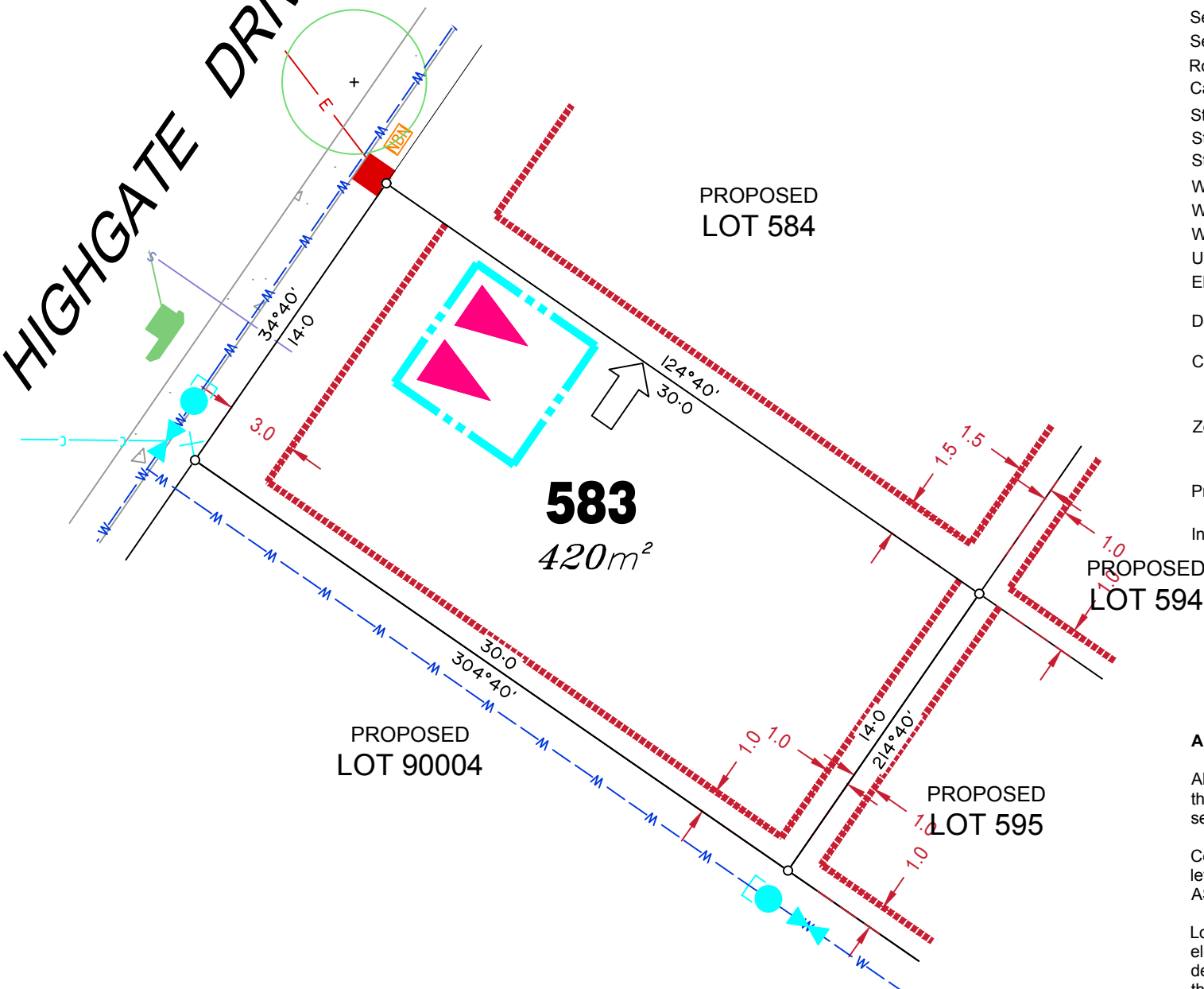


HIGHGATE DRIVE



LEGEND

Rock Retaining Wall shown as:-	
Sleeper Retaining Wall shown as:-	
Landscape Retaining Wall shown as:-	
Sewer line	
Sewer Manhole	
Roofwater Drainage line and Catch Pit	
Stormwater Drainage Line	
Stormwater Manhole	
Stormwater Pit	
Water Main	
Water Conduit	
Water Service Point of Entry	
Underground Electricity, Street Light, Electricity Pillar & NBN	
Developer Fencing	
Concrete Pathway	
Landscape Street Tree	
Zero Setback Building Line	
Indicative Building Envelope	
Proposed Services Easement	
Indicative Parking Access Location	

ADDITIONAL NOTES:

Allotments used as Multiple Residential Allotments in accordance with the approved Plan of Development may have a reduced primary road setback to 3.0metres as noted on the Plan of Development Table.

Compaction of any fill material placed on this site shall be completed to level one inspection and testing services in accordance with AS3798-2007.

Location of sewer, roofwater, stormwater, water reticulation and electricity lines, manholes and pits are those shown on engineering design drawings, supplied by Bradlees Meinhardt, and may differ from the as-constructed location.

Plan of Development information Supplied by RPS Group PLC.

HIGHGATE DRIVE

PROPOSED
LOT 586

584
600m²

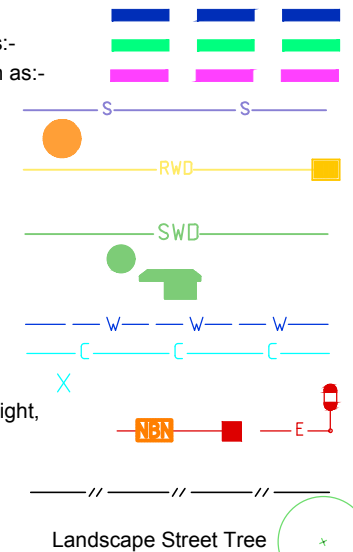
PROPOSED
LOT 583

PROPOSED
LOT 594

PROPOSED
LOT 595

LEGEND

Rock Retaining Wall shown as:-
Sleeper Retaining Wall shown as:-
Landscape Retaining Wall shown as:-
Sewer line
Sewer Manhole
Roofwater Drainage line and Catch Pit
Stormwater Drainage Line
Stormwater Manhole
Stormwater Pit
Water Main
Water Conduit
Water Service Point of Entry
Underground Electricity, Street Light, Electricity Pillar & NBN



Developer Fencing

Concrete Pathway

Zero Setback Building Line

Proposed Services Easement

Indicative Parking Access Location

Landscape Street Tree

Indicative Building Envelope

ADDITIONAL NOTES:

Allotments used as Multiple Residential Allotments in accordance with the approved Plan of Development may have a reduced primary road setback to 3.0metres as noted on the Plan of Development Table.

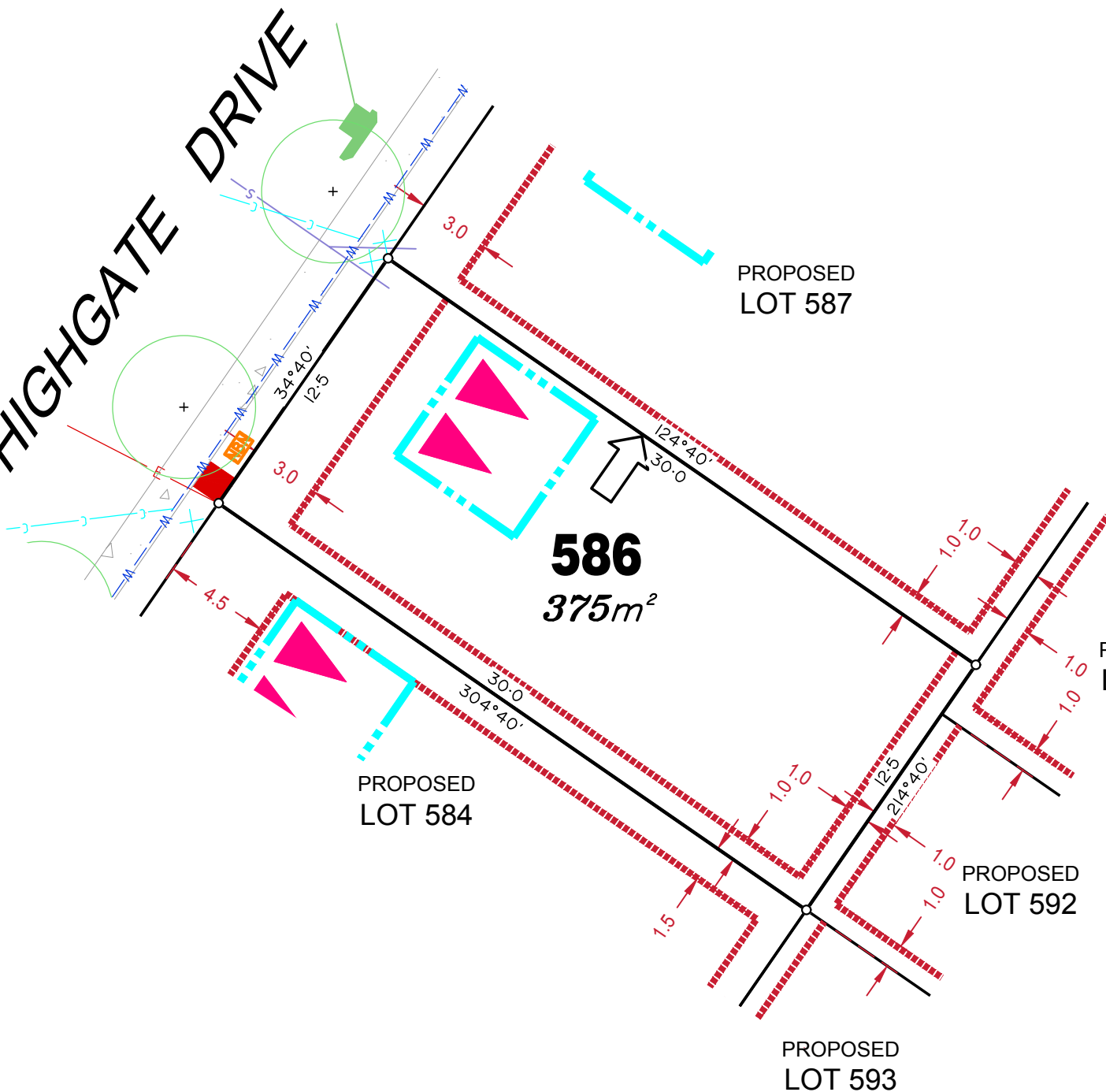
Compaction of any fill material placed on this site shall be completed to level one inspection and testing services in accordance with AS3798-2007.

Location of sewer, roofwater, stormwater, water reticulation and electricity lines, manholes and pits are those shown on engineering design drawings, supplied by Bradlees Meinhardt, and may differ from the as-constructed location.

Plan of Development information Supplied by RPS Group PLC.

Copyright © Veris Australia Pty Ltd
September 2018.

HIGHGATE DRIVE



LEGEND

Rock Retaining Wall shown as:-	
Sleeper Retaining Wall shown as:-	
Landscape Retaining Wall shown as:-	
Sewer line	
Sewer Manhole	
Roofwater Drainage line and Catch Pit	
Stormwater Drainage Line	
Stormwater Manhole	
Stormwater Pit	
Water Main	
Water Conduit	
Water Service Point of Entry	
Underground Electricity, Street Light, Electricity Pillar & NBN	
Developer Fencing	
Concrete Pathway	
Landscape Street Tree	
Zero Setback Building Line	
Indicative Building Envelope	
Proposed Services Easement	
Indicative Parking Access Location	

ADDITIONAL NOTES:

Allotments used as Multiple Residential Allotments in accordance with the approved Plan of Development may have a reduced primary road setback to 3.0metres as noted on the Plan of Development Table.

Compaction of any fill material placed on this site shall be completed to level one inspection and testing services in accordance with AS3798-2007.

Location of sewer, roofwater, stormwater, water reticulation and electricity lines, manholes and pits are those shown on engineering design drawings, supplied by Bradlees Meinhardt, and may differ from the as-constructed location.

Plan of Development information Supplied by RPS Group PLC.

Copyright © Veris Australia Pty Ltd
September 2018.

HIGHGATE DRIVE

PROPOSED
LOT 588

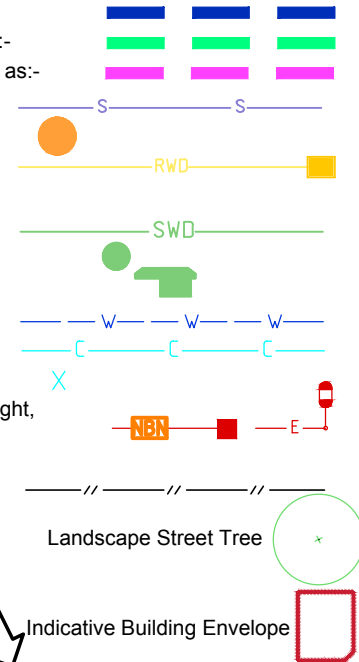
587
420m²

PROPOSED
LOT 586

PROPOSED
LOT 591

LEGEND

Rock Retaining Wall shown as:-
Sleeper Retaining Wall shown as:-
Landscape Retaining Wall shown as:-
Sewer line
Sewer Manhole
Roofwater Drainage line and Catch Pit
Stormwater Drainage Line
Stormwater Manhole
Stormwater Pit
Water Main
Water Conduit
Water Service Point of Entry
Underground Electricity, Street Light, Electricity Pillar & NBN



PROPOSED
LOT 590

ADDITIONAL NOTES:

Allotments used as Multiple Residential Allotments in accordance with the approved Plan of Development may have a reduced primary road setback to 3.0metres as noted on the Plan of Development Table.

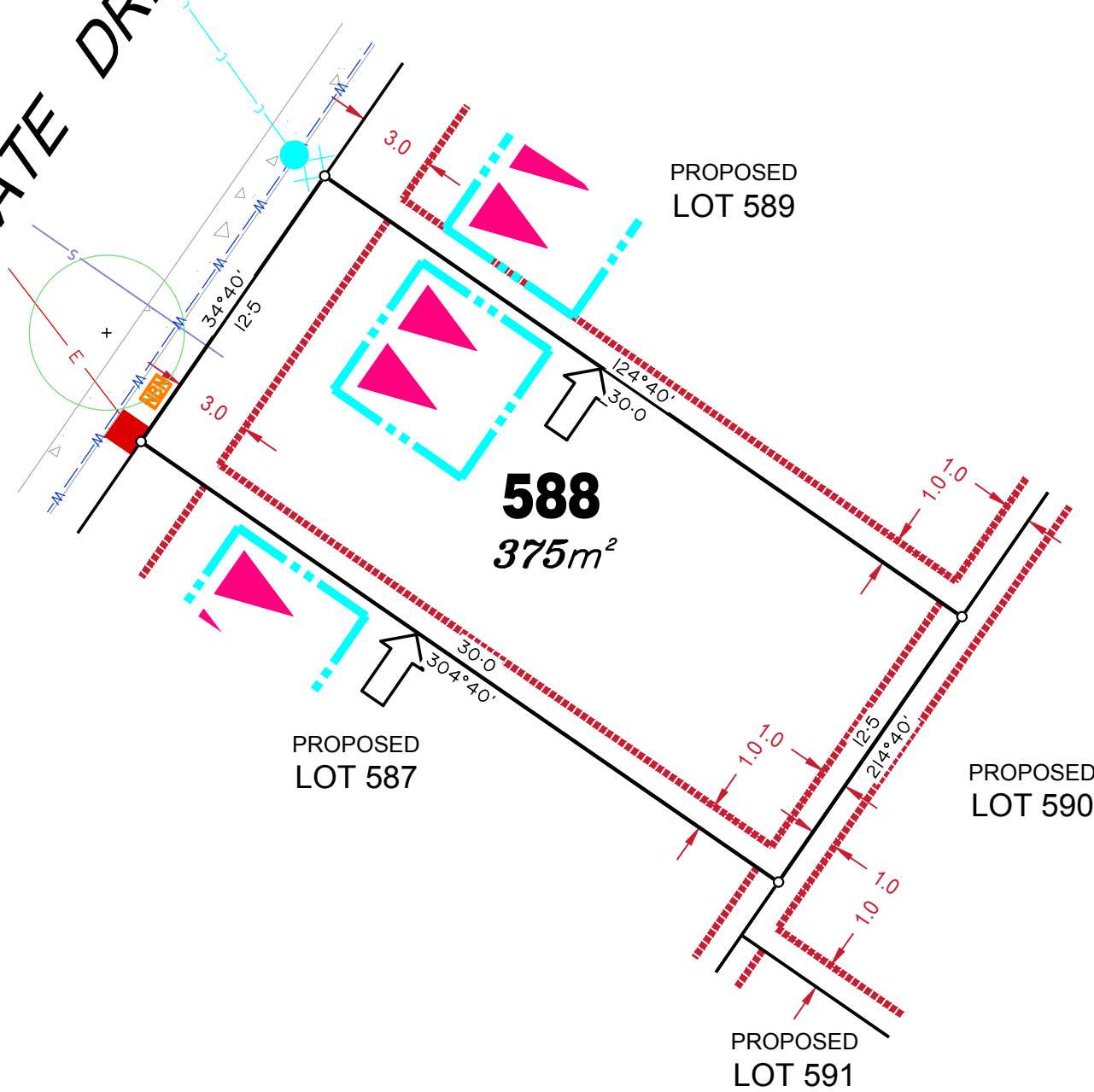
Compaction of any fill material placed on this site shall be completed to level one inspection and testing services in accordance with AS3798-2007.

Location of sewer, roofwater, stormwater, water reticulation and electricity lines, manholes and pits are those shown on engineering design drawings, supplied by Bradlees Meinhardt, and may differ from the as-constructed location.

Plan of Development information Supplied by RPS Group PLC.

Copyright © Veris Australia Pty Ltd
September 2018.

HIGHGATE DRIVE



LEGEND

Rock Retaining Wall shown as:-	
Sleeper Retaining Wall shown as:-	
Landscape Retaining Wall shown as:-	
Sewer line	
Sewer Manhole	
Roofwater Drainage line and Catch Pit	
Stormwater Drainage Line	
Stormwater Manhole	
Stormwater Pit	
Water Main	
Water Conduit	
Water Service Point of Entry	
Underground Electricity, Street Light, Electricity Pillar & NBN	
Developer Fencing	
Concrete Pathway	
Landscape Street Tree	
Zero Setback Building Line	
Indicative Building Envelope	
Proposed Services Easement	
Indicative Parking Access Location	

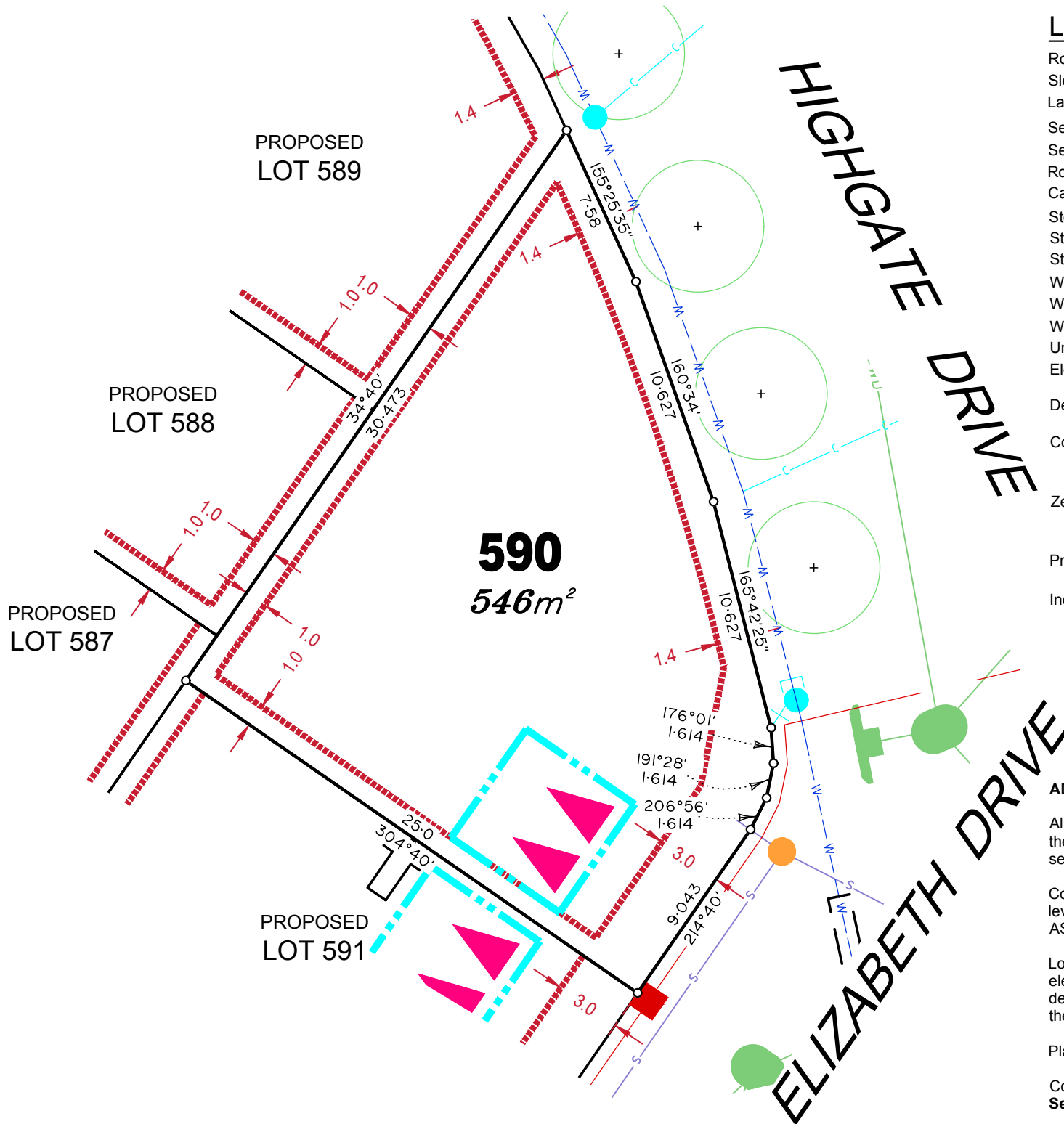
ADDITIONAL NOTES:

Allotments used as Multiple Residential Allotments in accordance with the approved Plan of Development may have a reduced primary road setback to 3.0metres as noted on the Plan of Development Table.

Compaction of any fill material placed on this site shall be completed to level one inspection and testing services in accordance with AS3798-2007.

Location of sewer, roofwater, stormwater, water reticulation and electricity lines, manholes and pits are those shown on engineering design drawings, supplied by Bradlees Meinhardt, and may differ from the as-constructed location.

Plan of Development information Supplied by RPS Group PLC.



LEGEND

Rock Retaining Wall shown as:-	
Sleeper Retaining Wall shown as:-	
Landscape Retaining Wall shown as:-	
Sewer line	
Sewer Manhole	
Roofwater Drainage line and Catch Pit	
Stormwater Drainage Line	
Stormwater Manhole	
Stormwater Pit	
Water Main	
Water Conduit	
Water Service Point of Entry	
Underground Electricity, Street Light, Electricity Pillar & NBN	
Developer Fencing	
Concrete Pathway	
Landscape Street Tree	
Zero Setback Building Line	
Indicative Building Envelope	
Proposed Services Easement	
Indicative Parking Access Location	

ADDITIONAL NOTES:

Allotments used as Multiple Residential Allotments in accordance with the approved Plan of Development may have a reduced primary road setback to 3.0metres as noted on the Plan of Development Table.

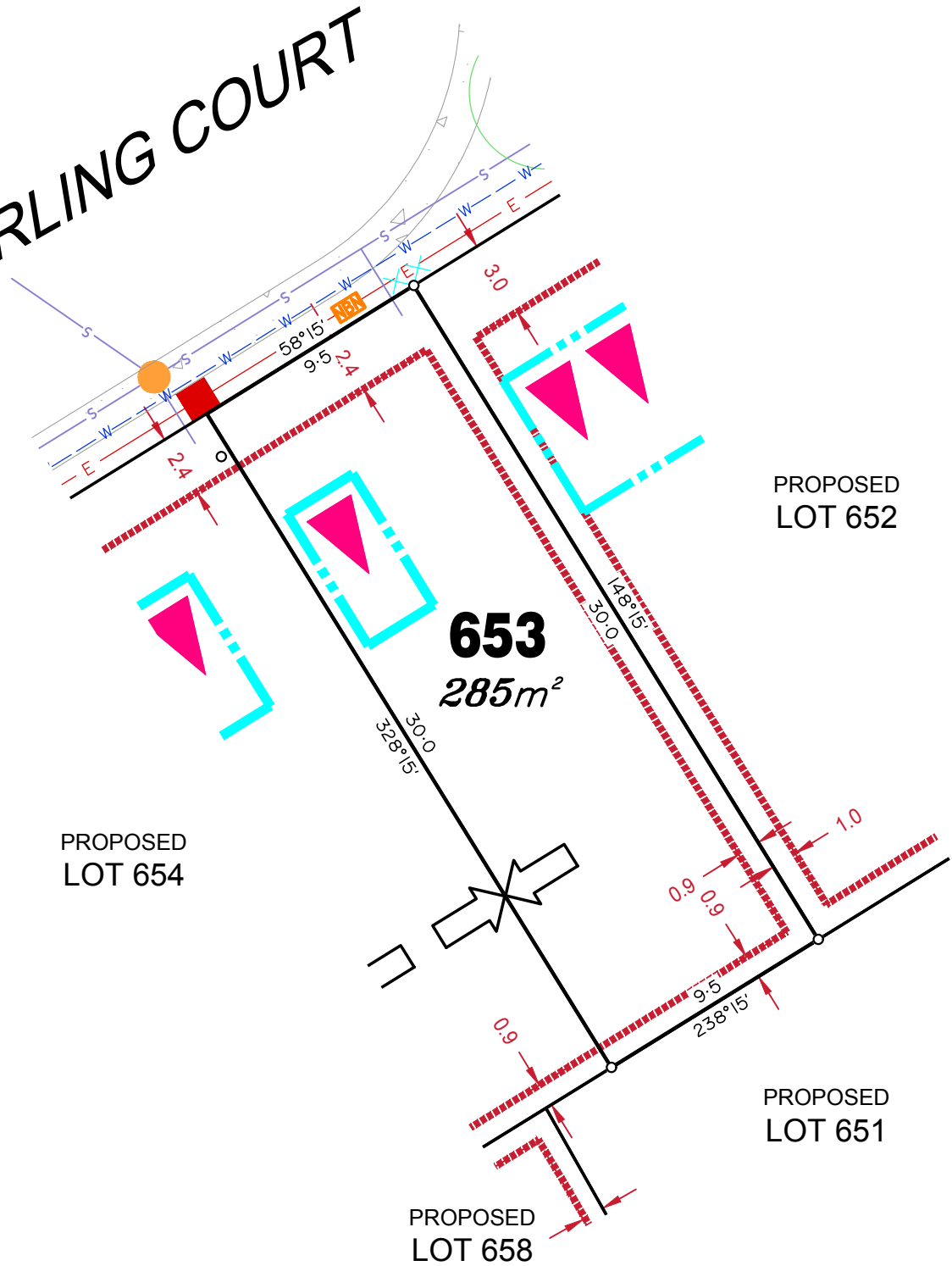
Compaction of any fill material placed on this site shall be completed to level one inspection and testing services in accordance with AS3798-2007.

Location of sewer, roofwater, stormwater, water reticulation and electricity lines, manholes and pits are those shown on engineering design drawings, supplied by Bradlees Meinhardt, and may differ from the as-constructed location.

Plan of Development information Supplied by RPS Group PLC.

Copyright © Veris Australia Pty Ltd
September 2018.

DARLING COURT



LEGEND

Rock Retaining Wall shown as:-	
Sleeper Retaining Wall shown as:-	
Landscape Retaining Wall shown as:-	
Sewer line	
Sewer Manhole	
Roofwater Drainage line and Catch Pit	
Stormwater Drainage Line	
Stormwater Manhole	
Stormwater Pit	
Water Main	
Water Conduit	
Water Service Point of Entry	
Underground Electricity, Street Light, Electricity Pillar & NBN	
Developer Fencing	
Concrete Pathway	
Landscape Street Tree	
Zero Setback Building Line	
Indicative Building Envelope	
Proposed Services Easement	
Indicative Parking Access Location	

ADDITIONAL NOTES:

Allotments used as Multiple Residential Allotments in accordance with the approved Plan of Development may have a reduced primary road setback to 3.0metres as noted on the Plan of Development Table.

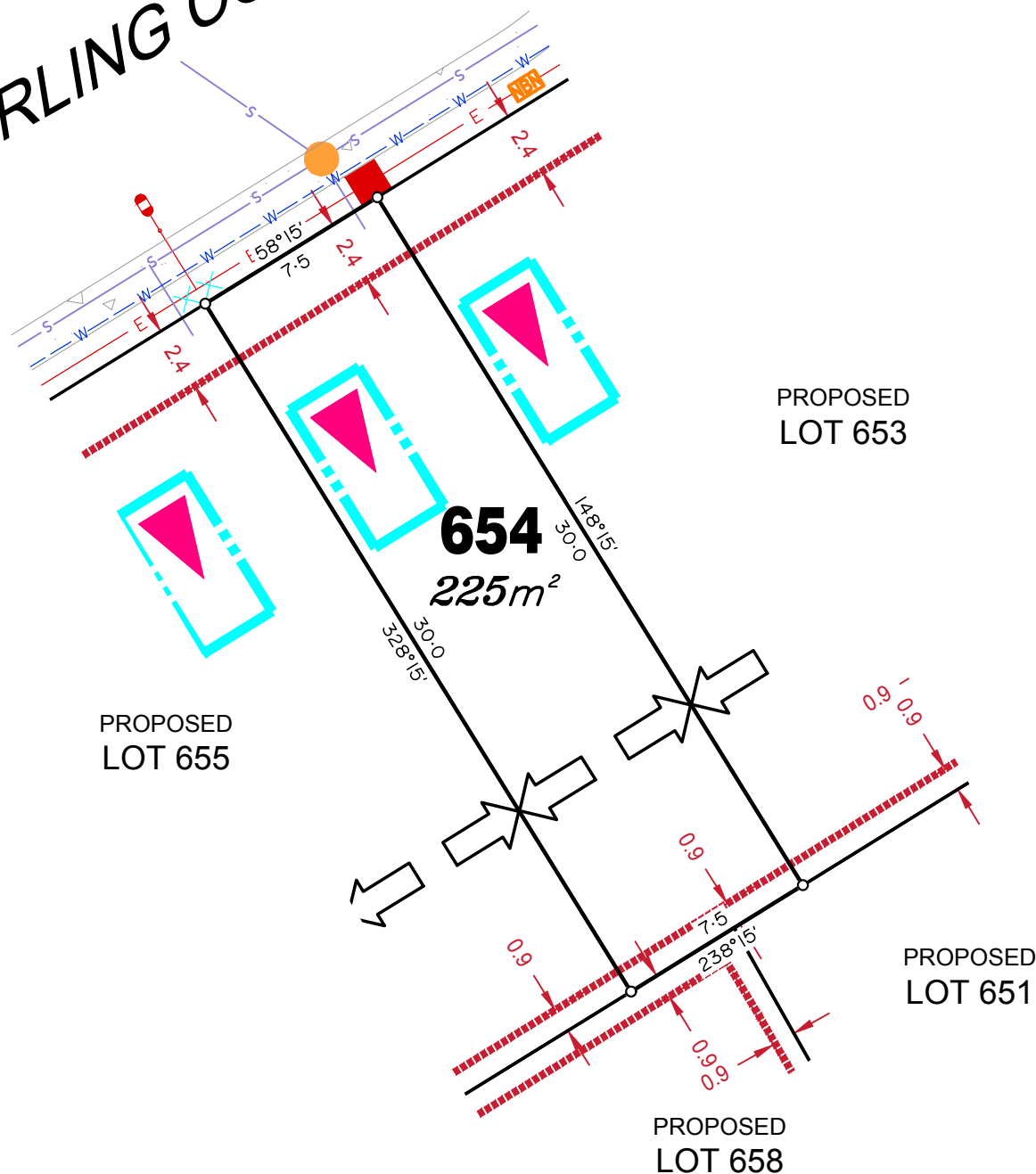
Compaction of any fill material placed on this site shall be completed to level one inspection and testing services in accordance with AS3798-2007.

Location of sewer, roofwater, stormwater, water reticulation and electricity lines, manholes and pits are those shown on engineering design drawings, supplied by Bradlees Meinhardt, and may differ from the as-constructed location.

Plan of Development information Supplied by RPS Group PLC.

Copyright © Veris Australia Pty Ltd
September 2018.

A diagram showing a blue line labeled 'S' (South) pointing towards a red dot labeled 'DARLING COURT'.



LEGEND

Rock Retaining Wall shown as:-

Sleeper Retaining Wall shown as:-

Landscape Retaining Wall shown as:-

Sewer line

Sewer Manhole

Roofwater Drainage line and Catch Pit

Stormwater Drainage Line

Stormwater Manhole

Stormwater Pit

Water Main

Water Conduit

Water Service Point of Entry

Underground Electricity, Street Light,
Electricity Pillar & NBN

Developer Fencing

Concrete Pathway

Zero Setback Building Line

Proposed Services Easement

Indicative Parking Access Location

ADDITIONAL NOTES:

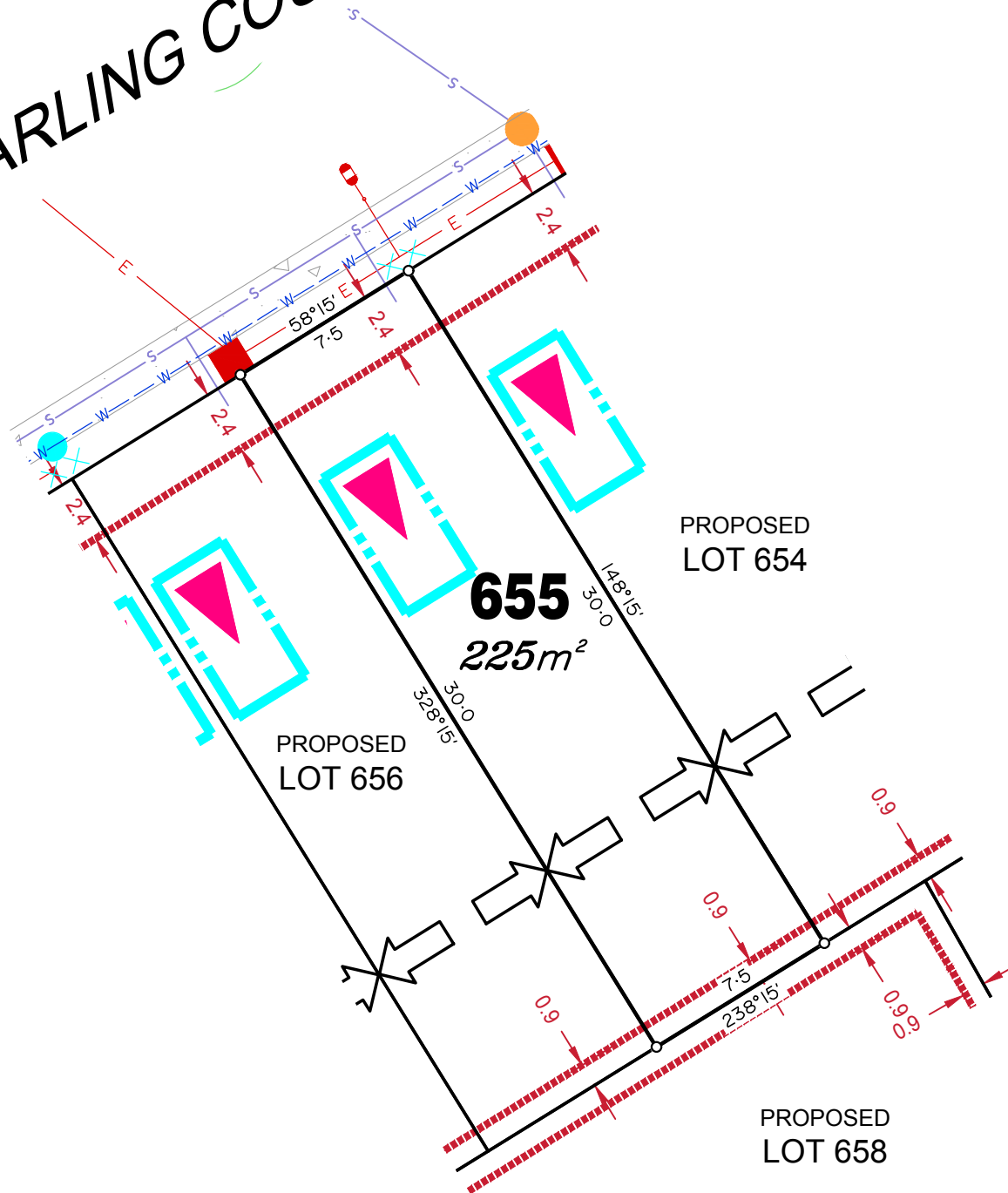
Allotments used as Multiple Residential Allotments in accordance with the approved Plan of Development may have a reduced primary road setback to 3.0metres as noted on the Plan of Development Table.

Compaction of any fill material placed on this site shall be completed to level one inspection and testing services in accordance with AS3798-2007.

Location of sewer, roofwater, stormwater, water reticulation and electricity lines, manholes and pits are those shown on engineering design drawings, supplied by Bradlees Meinhardt, and may differ from the as-constructed location.

Plan of Development information Supplied by RPS Group PLC.

Copyright © Veris Australia Pty Ltd
September 2018.



LEGEND

Rock Retaining Wall shown as:-

Sleeper Retaining Wall shown as:-

Landscape Retaining Wall shown as:-

Sewer line

Sewer Manhole

Roofwater Drainage line and Catch Pit

Stormwater Drainage Line

Stormwater Manhole

Stormwater Pit

Water Main

Water Conduit

Water Service Point of Entry

Underground Electricity, Street Light,
Electricity Pillar & NBN

Developer Fencing

Concrete Pathway

Zero Setback Building Line

Indicative Building Envelope

Proposed Services Easement

Indicative Parking Access Location

ADDITIONAL NOTES:

Allotments used as Multiple Residential Allotments in accordance with the approved Plan of Development may have a reduced primary road setback to 3.0metres as noted on the Plan of Development Table.

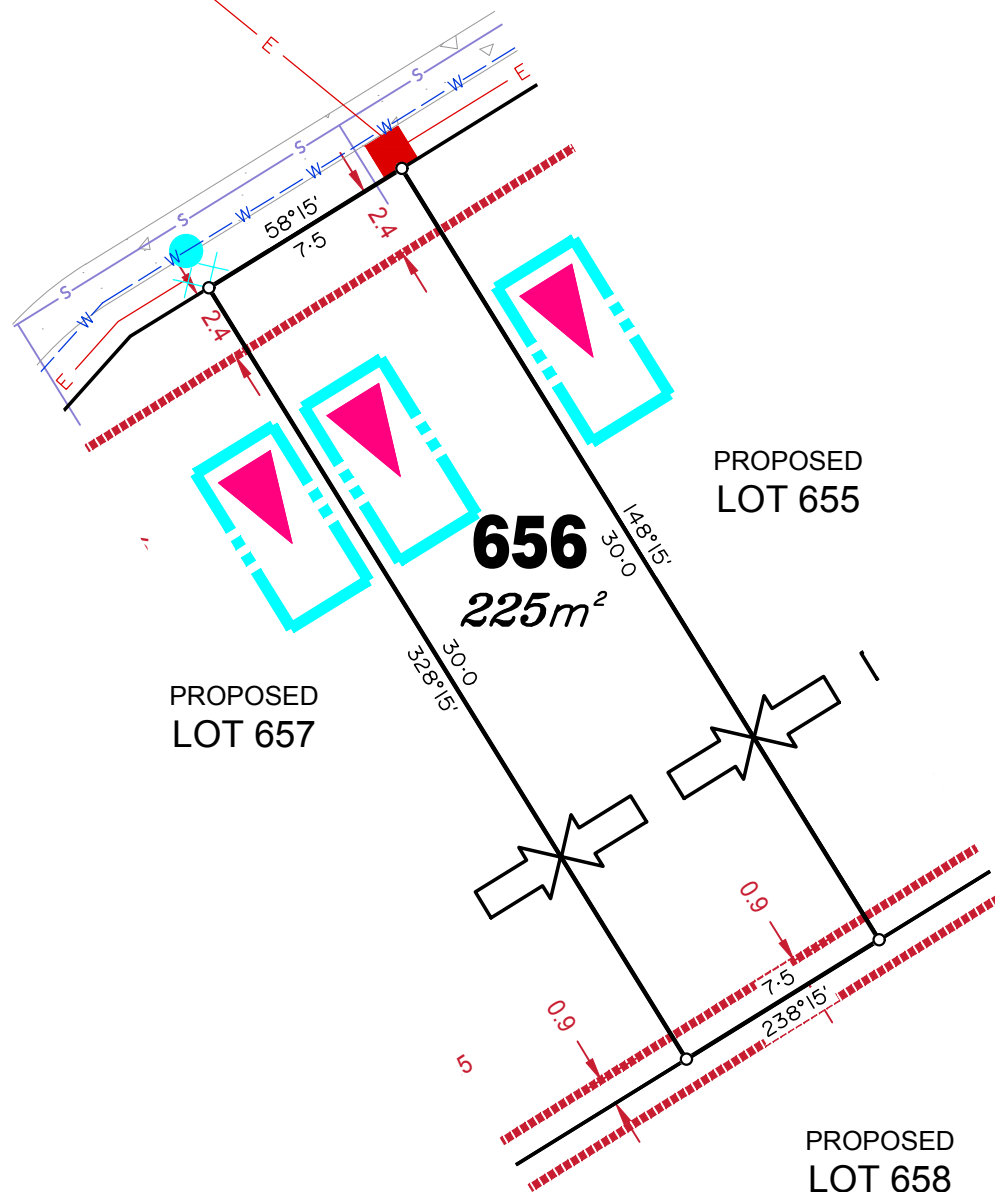
Compaction of any fill material placed on this site shall be completed to level one inspection and testing services in accordance with AS3798-2007.

Location of sewer, roofwater, stormwater, water reticulation and electricity lines, manholes and pits are those shown on engineering design drawings, supplied by Bradlees Meinhardt, and may differ from the as-constructed location.

Plan of Development information Supplied by RPS Group PLC.

Copyright © Veris Australia Pty Ltd
September 2018.

DARLING COURT



LEGEND

Rock Retaining Wall shown as:-

Sleeper Retaining Wall shown as:-

Landscape Retaining Wall shown as:-

Sewer line

Sewer Manhole

Roofwater Drainage line and Catch Pit

Stormwater Drainage Line

Stormwater Manhole

Stormwater Pit

Water Main

Water Conduit

Water Service Point of Entry

Underground Electricity, Street Light,
Electricity Pillar & NBN

Developer Fencing

Concrete Pathway

Zero Setback Building Line

Proposed Services Easement

Indicative Parking Access Location

as:-

_____S_____S_____

THE *Journal of the* **ROYAL SOCIETY OF MEDICINE**



SWD

● *How to Use This Book*

1


— — W — — W — — W — —

_____ [_____ [_____ [_____

X

light,

_____//_____//_____//_____

Landscape Street Tree 

A Indicative Building Envelope

1
























ADDITIONAL NOTES:

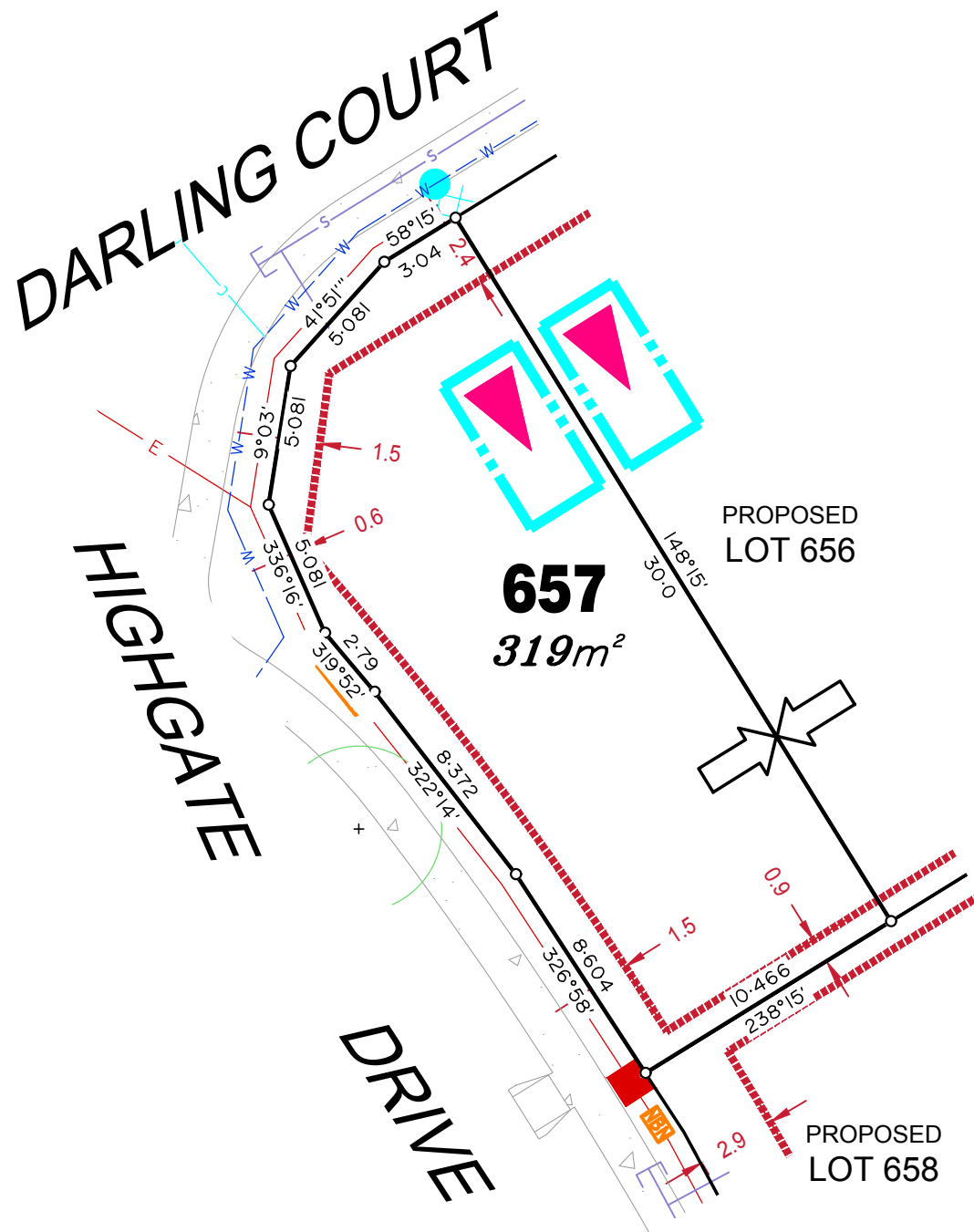
Allotments used as Multiple Residential Allotments in accordance with the approved Plan of Development may have a reduced primary road setback to 3.0metres as noted on the Plan of Development Table.

Compaction of any fill material placed on this site shall be completed to level one inspection and testing services in accordance with AS3798-2007.

Location of sewer, roofwater, stormwater, water reticulation and electricity lines, manholes and pits are those shown on engineering design drawings, supplied by Bradlees Meinhardt, and may differ from the as-constructed location.

Plan of Development information Supplied by RPS Group PLC.

Copyright © Veris Australia Pty Ltd
September 2018.



LEGEND

Rock Retaining Wall shown as:-	
Sleeper Retaining Wall shown as:-	
Landscape Retaining Wall shown as:-	
Sewer line	
Sewer Manhole	
Roofwater Drainage line and Catch Pit	
Stormwater Drainage Line	
Stormwater Manhole	
Stormwater Pit	
Water Main	
Water Conduit	
Water Service Point of Entry	
Underground Electricity, Street Light, Electricity Pillar & NBN	
Developer Fencing	
Concrete Pathway	
Landscape Street Tree	
Zero Setback Building Line	
Indicative Building Envelope	
Proposed Services Easement	
Indicative Parking Access Location	

ADDITIONAL NOTES:

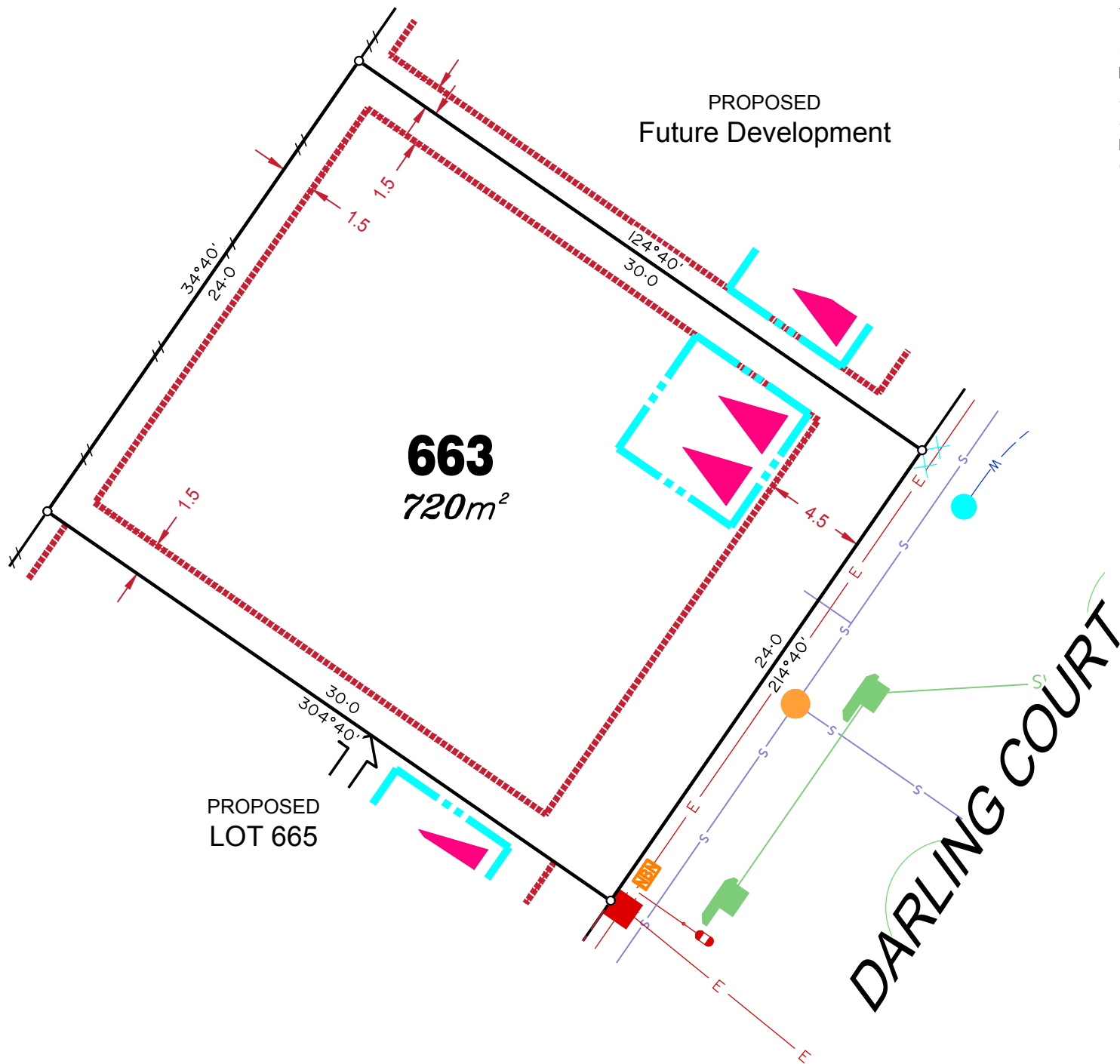
Allotments used as Multiple Residential Allotments in accordance with the approved Plan of Development may have a reduced primary road setback to 3.0metres as noted on the Plan of Development Table.

Compaction of any fill material placed on this site shall be completed to level one inspection and testing services in accordance with AS3798-2007.

Location of sewer, roofwater, stormwater, water reticulation and electricity lines, manholes and pits are those shown on engineering design drawings, supplied by Bradlees Meinhardt, and may differ from the as-constructed location.

Plan of Development information Supplied by RPS Group PLC.

Copyright © Veris Australia Pty Ltd
September 2018.



LEGEND

Rock Retaining Wall shown as:-	
Sleeper Retaining Wall shown as:-	
Landscape Retaining Wall shown as:-	
Sewer line	
Sewer Manhole	
Roofwater Drainage line and Catch Pit	
Stormwater Drainage Line	
Stormwater Manhole	
Stormwater Pit	
Water Main	
Water Conduit	
Water Service Point of Entry	
Underground Electricity, Street Light, Electricity Pillar & NBN	
Developer Fencing	
Concrete Pathway	
Landscape Street Tree	
Zero Setback Building Line	
Indicative Building Envelope	
Proposed Services Easement	
Indicative Parking Access Location	

ADDITIONAL NOTES:

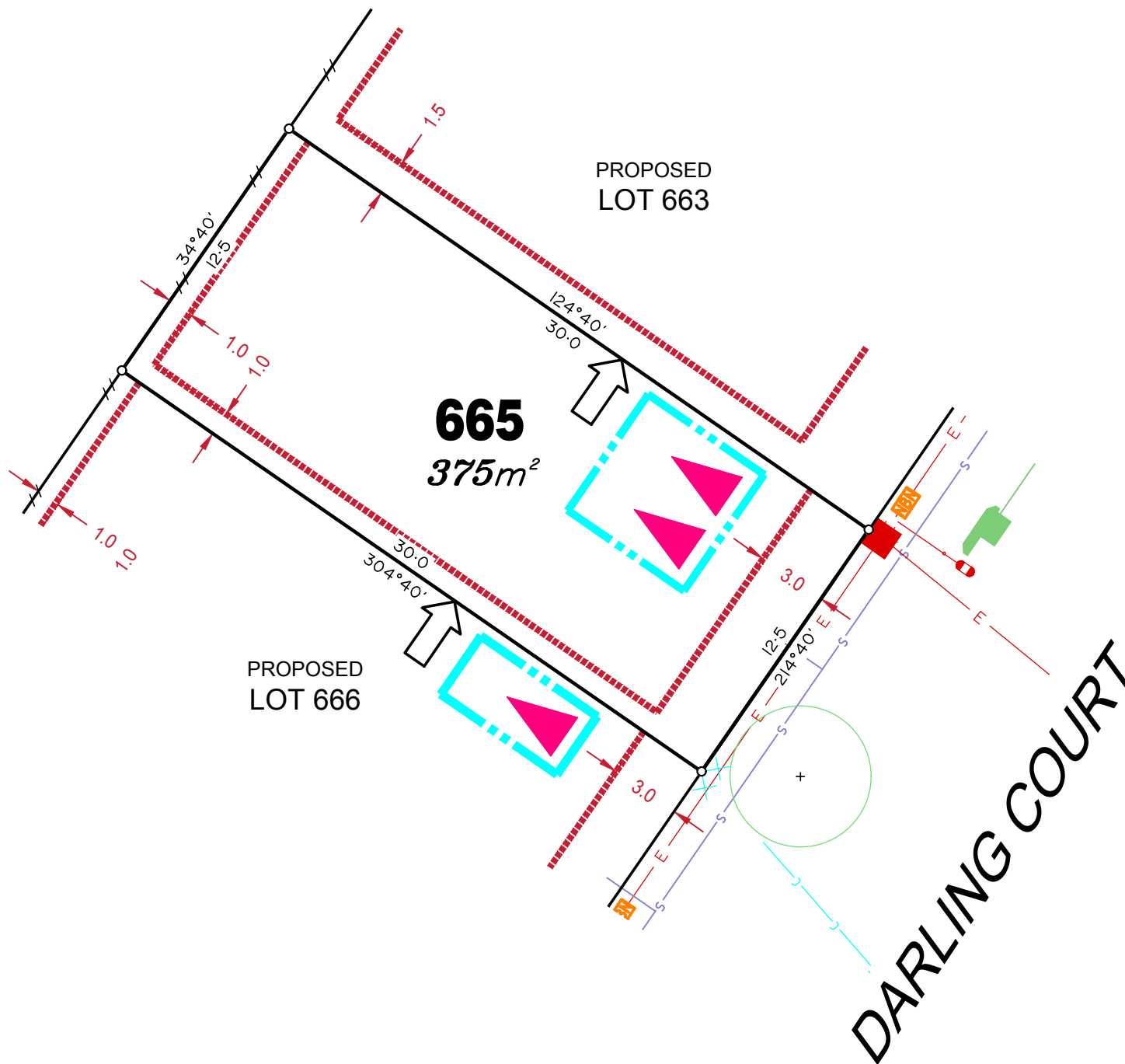
Allotments used as Multiple Residential Allotments in accordance with the approved Plan of Development may have a reduced primary road setback to 3.0metres as noted on the Plan of Development Table.

Compaction of any fill material placed on this site shall be completed to level one inspection and testing services in accordance with AS3798-2007.

Location of sewer, roofwater, stormwater, water reticulation and electricity lines, manholes and pits are those shown on engineering design drawings, supplied by Bradlees Meinhardt, and may differ from the as-constructed location.

Plan of Development information Supplied by RPS Group PLC.

Copyright © Veris Australia Pty Ltd
September 2018.



LEGEND

Rock Retaining Wall shown as:-	
Sleeper Retaining Wall shown as:-	
Landscape Retaining Wall shown as:-	
Sewer line	
Sewer Manhole	
Roofwater Drainage line and Catch Pit	
Stormwater Drainage Line	
Stormwater Manhole	
Stormwater Pit	
Water Main	
Water Conduit	
Water Service Point of Entry	
Underground Electricity, Street Light, Electricity Pillar & NBN	
Developer Fencing	
Concrete Pathway	
Landscape Street Tree	
Zero Setback Building Line	
Indicative Building Envelope	
Proposed Services Easement	
Indicative Parking Access Location	

ADDITIONAL NOTES:

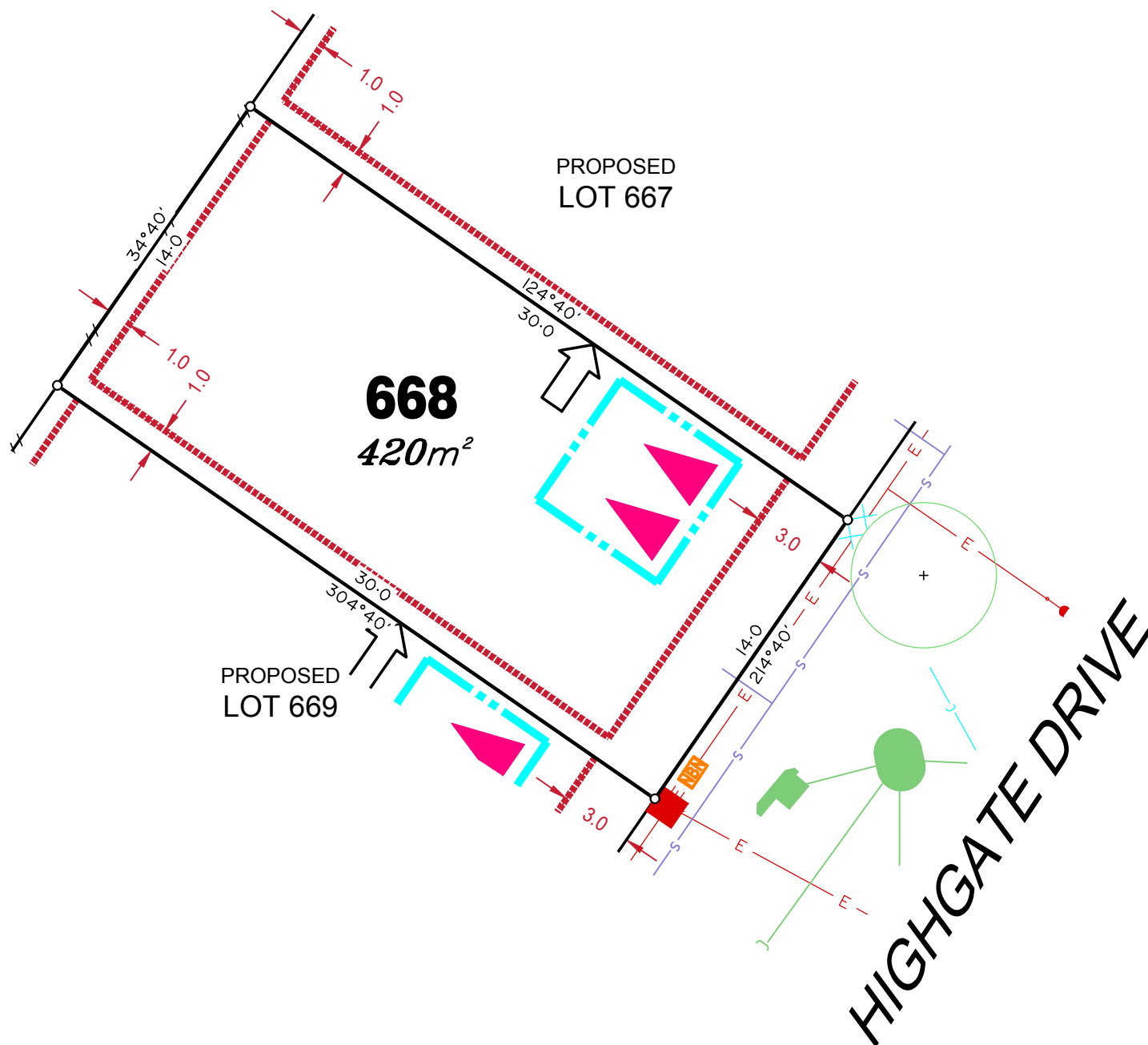
Allotments used as Multiple Residential Allotments in accordance with the approved Plan of Development may have a reduced primary road setback to 3.0metres as noted on the Plan of Development Table.

Compaction of any fill material placed on this site shall be completed to level one inspection and testing services in accordance with AS3798-2007.

Location of sewer, roofwater, stormwater, water reticulation and electricity lines, manholes and pits are those shown on engineering design drawings, supplied by Bradlees Meinhardt, and may differ from the as-constructed location.

Plan of Development information Supplied by RPS Group PLC.

Copyright © Veris Australia Pty Ltd
September 2018.



LEGEND

Rock Retaining Wall shown as:-	
Sleeper Retaining Wall shown as:-	
Landscape Retaining Wall shown as:-	
Sewer line	
Sewer Manhole	
Roofwater Drainage line and Catch Pit	
Stormwater Drainage Line	
Stormwater Manhole	
Stormwater Pit	
Water Main	
Water Conduit	
Water Service Point of Entry	
Underground Electricity, Street Light, Electricity Pillar & NBN	
Developer Fencing	
Concrete Pathway	
Landscape Street Tree	
Zero Setback Building Line	
Indicative Building Envelope	
Proposed Services Easement	
Indicative Parking Access Location	

ADDITIONAL NOTES:

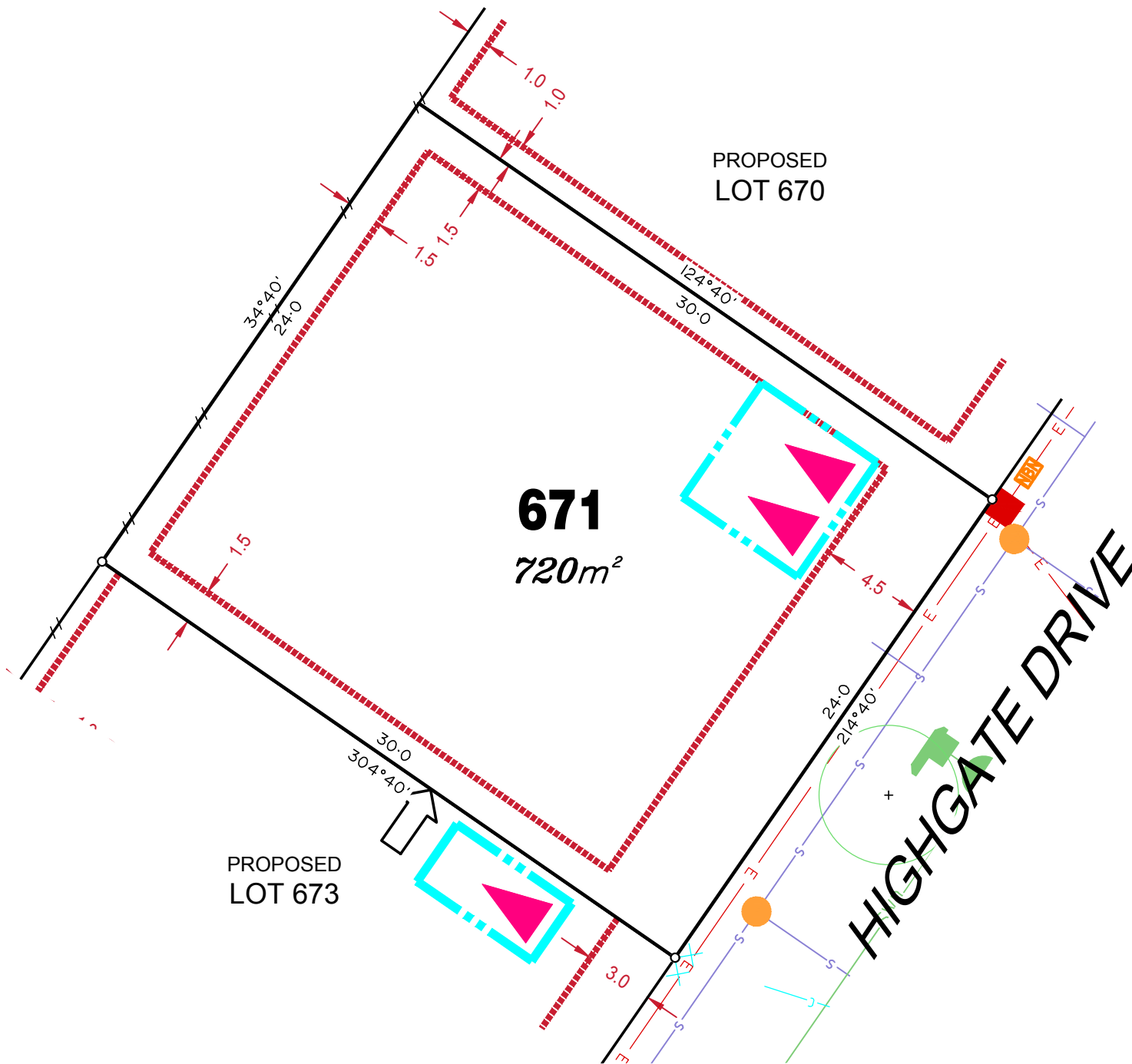
Allotments used as Multiple Residential Allotments in accordance with the approved Plan of Development may have a reduced primary road setback to 3.0metres as noted on the Plan of Development Table.

Compaction of any fill material placed on this site shall be completed to level one inspection and testing services in accordance with AS3798-2007.

Location of sewer, roofwater, stormwater, water reticulation and electricity lines, manholes and pits are those shown on engineering design drawings, supplied by Bradlees Meinhardt, and may differ from the as-constructed location.

Plan of Development information Supplied by RPS Group PLC.

Copyright © Veris Australia Pty Ltd
September 2018.



LEGEND

Rock Retaining Wall shown as:-	
Sleeper Retaining Wall shown as:-	
Landscape Retaining Wall shown as:-	
Sewer line	
Sewer Manhole	
Roofwater Drainage line and Catch Pit	
Stormwater Drainage Line	
Stormwater Manhole	
Stormwater Pit	
Water Main	
Water Conduit	
Water Service Point of Entry	
Underground Electricity, Street Light, Electricity Pillar & NBN	
Developer Fencing	
Concrete Pathway	
Landscape Street Tree	
Zero Setback Building Line	
Indicative Building Envelope	
Proposed Services Easement	
Indicative Parking Access Location	

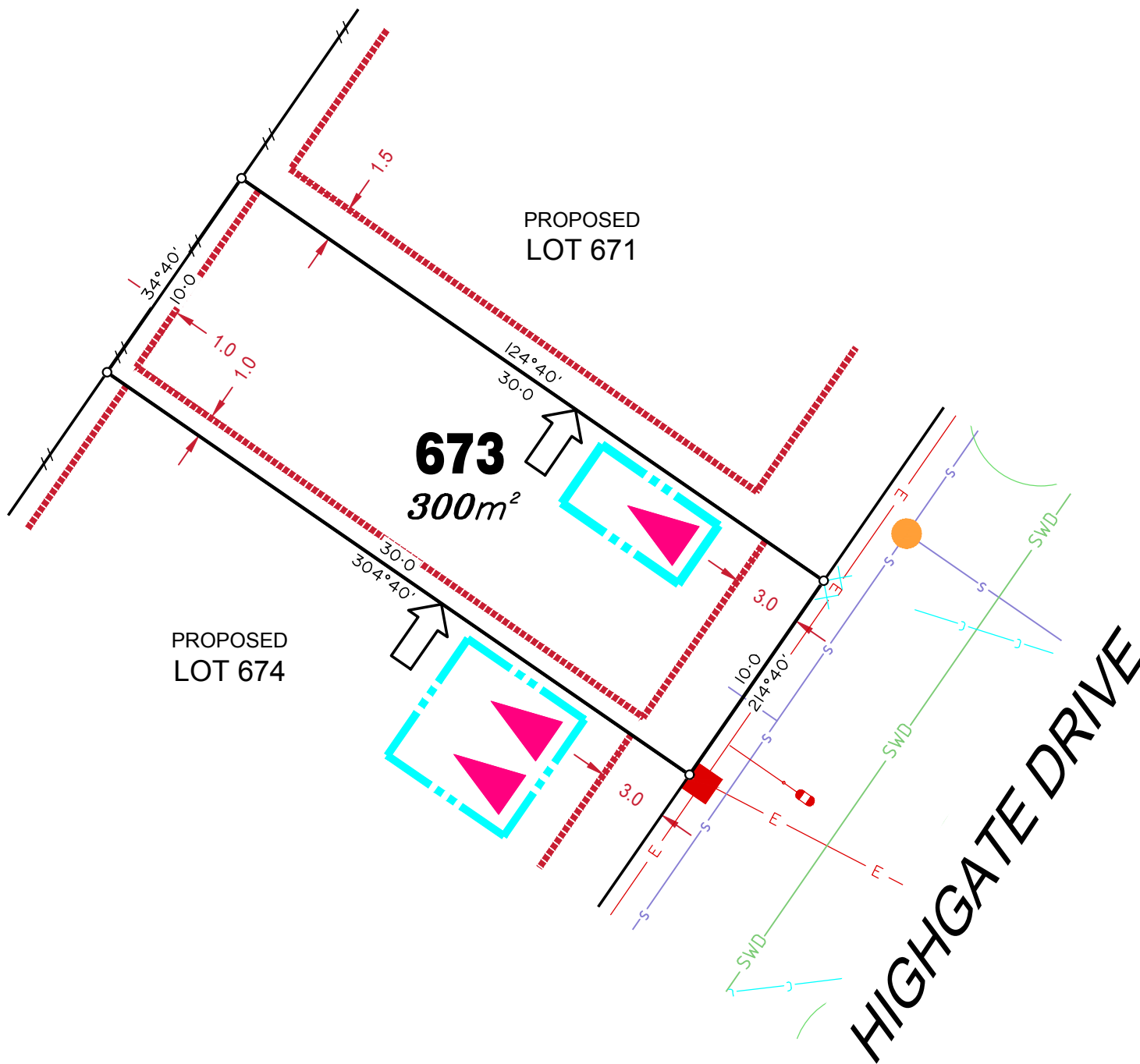
ADDITIONAL NOTES:

Allotments used as Multiple Residential Allotments in accordance with the approved Plan of Development may have a reduced primary road setback to 3.0metres as noted on the Plan of Development Table.

Compaction of any fill material placed on this site shall be completed to level one inspection and testing services in accordance with AS3798-2007.

Location of sewer, roofwater, stormwater, water reticulation and electricity lines, manholes and pits are those shown on engineering design drawings, supplied by Bradlees Meinhardt, and may differ from the as-constructed location.

Plan of Development information Supplied by RPS Group PLC.



LEGEND

Rock Retaining Wall shown as:-	
Sleeper Retaining Wall shown as:-	
Landscape Retaining Wall shown as:-	
Sewer line	
Sewer Manhole	
Roofwater Drainage line and Catch Pit	
Stormwater Drainage Line	
Stormwater Manhole	
Stormwater Pit	
Water Main	
Water Conduit	
Water Service Point of Entry	
Underground Electricity, Street Light, Electricity Pillar & NBN	
Developer Fencing	
Concrete Pathway	
Landscape Street Tree	
Zero Setback Building Line	
Indicative Building Envelope	
Proposed Services Easement	
Indicative Parking Access Location	

ADDITIONAL NOTES:














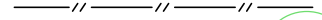




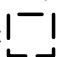

Allotments used as Multiple Residential Allotments in accordance with the approved Plan of Development may have a reduced primary road setback to 3.0metres as noted on the Plan of Development Table.

Compaction of any fill material placed on this site shall be completed to level one inspection and testing services in accordance with AS3798-2007.

Location of sewer, roofwater, stormwater, water reticulation and electricity lines, manholes and pits are those shown on engineering design drawings, supplied by Bradlees Meinhardt, and may differ from the as-constructed location.

Plan of Development information Supplied by RPS Group PLC.

LEGEND

Rock Retaining Wall shown as:-	
Sleeper Retaining Wall shown as:-	
Landscape Retaining Wall shown as:-	
Sewer line	
Sewer Manhole	
Roofwater Drainage line and Catch Pit	
Stormwater Drainage Line	
Stormwater Manhole	
Stormwater Pit	
Water Main	
Water Conduit	
Water Service Point of Entry	
Underground Electricity, Street Light, Electricity Pillar & NBN	
Developer Fencing	
Concrete Pathway	
Landscape Street Tree	
Zero Setback Building Line	
Indicative Building Envelope	
Proposed Services Easement	
Indicative Parking Access Location	

ADDITIONAL NOTES:

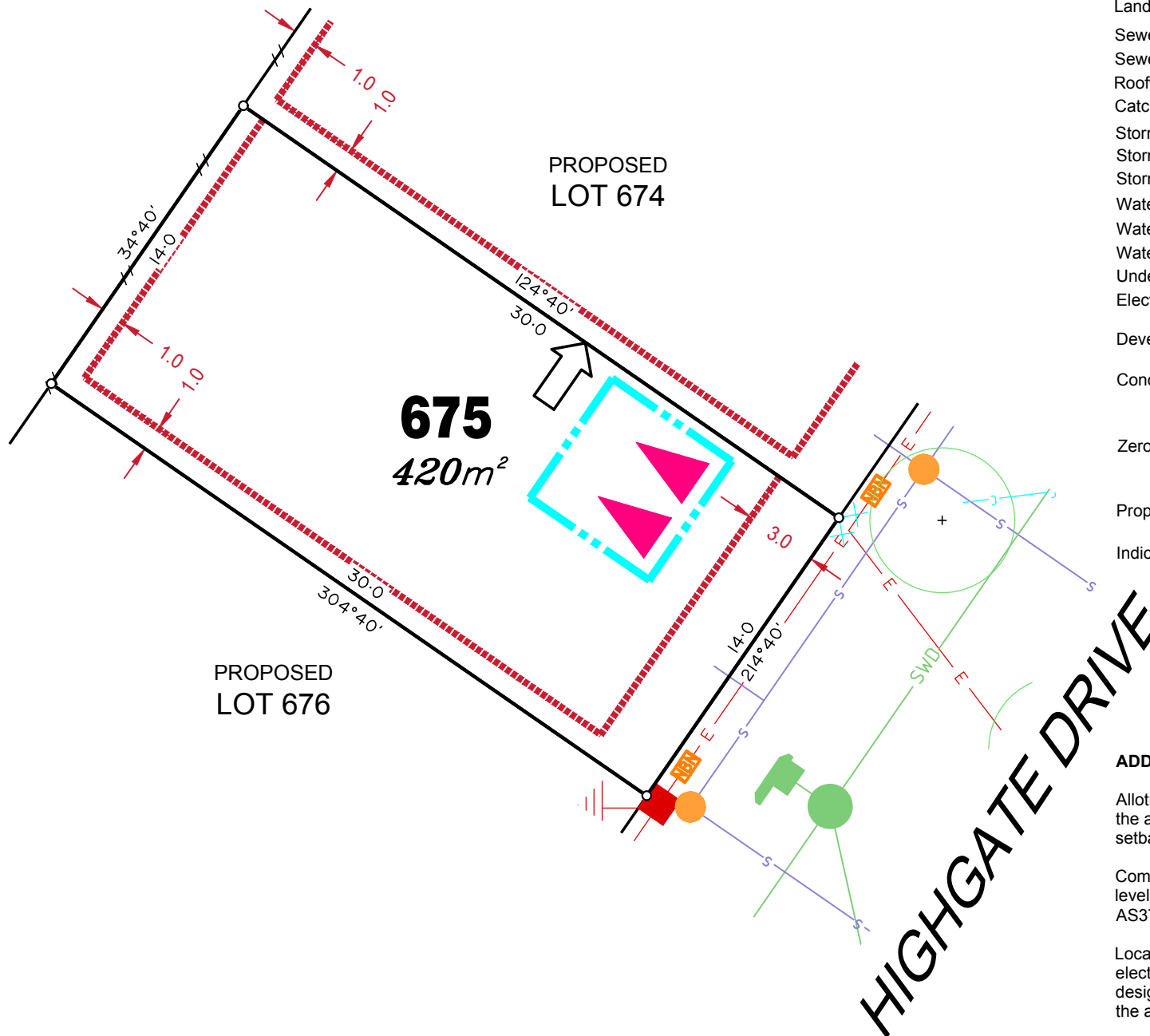
Allotments used as Multiple Residential Allotments in accordance with the approved Plan of Development may have a reduced primary road setback to 3.0metres as noted on the Plan of Development Table.

Compaction of any fill material placed on this site shall be completed to level one inspection and testing services in accordance with AS3798-2007.

Location of sewer, roofwater, stormwater, water reticulation and electricity lines, manholes and pits are those shown on engineering design drawings, supplied by Bradlees Meinhardt, and may differ from the as-constructed location.

Plan of Development information Supplied by RPS Group PLC.

Copyright © Veris Australia Pty Ltd
September 2018.



DARLING COURT














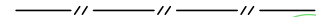






GATEWAY DRIVE

652
500m²

PROPOSED
LOT 653

PROPOSED
LOT 651

LEGEND

Rock Retaining Wall shown as:-	
Sleeper Retaining Wall shown as:-	
Landscape Retaining Wall shown as:-	
Sewer line	
Sewer Manhole	
Roofwater Drainage line and Catch Pit	
Stormwater Drainage Line	
Stormwater Manhole	
Stormwater Pit	
Water Main	
Water Conduit	
Water Service Point of Entry	
Underground Electricity, Street Light, Electricity Pillar & NBN	
Developer Fencing	
Concrete Pathway	
Landscape Street Tree	
Zero Setback Building Line	
Indicative Building Envelope	
Proposed Services Easement	
Indicative Parking Access Location	

ADDITIONAL NOTES:

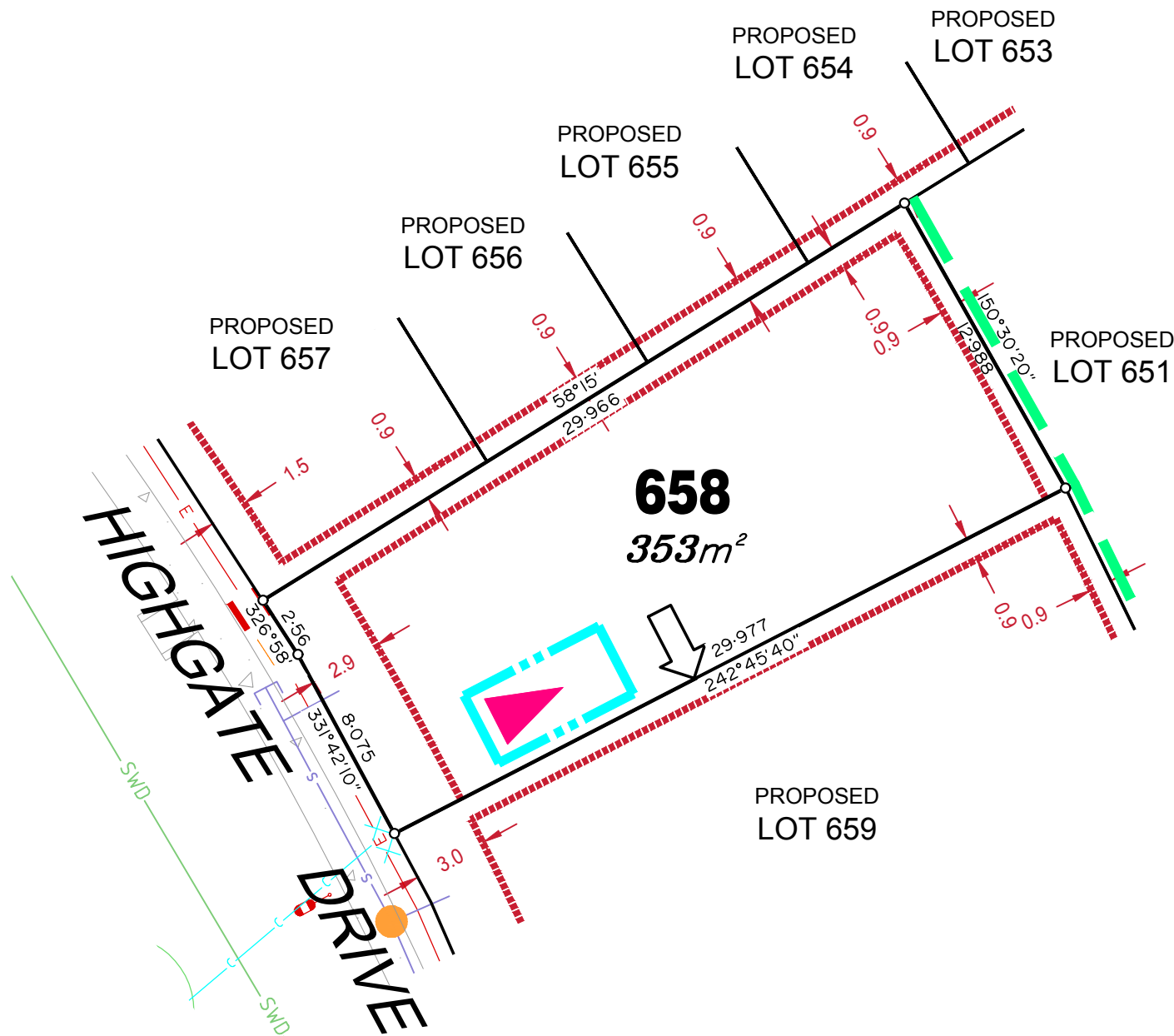
Allotments used as Multiple Residential Allotments in accordance with the approved Plan of Development may have a reduced primary road setback to 3.0metres as noted on the Plan of Development Table.

Compaction of any fill material placed on this site shall be completed to level one inspection and testing services in accordance with AS3798-2007.

Location of sewer, roofwater, stormwater, water reticulation and electricity lines, manholes and pits are those shown on engineering design drawings, supplied by Bradlees Meinhardt, and may differ from the as-constructed location.

Plan of Development information Supplied by RPS Group PLC.

Copyright © Veris Australia Pty Ltd
September 2018.



LEGEND

Rock Retaining Wall shown as:-	
Sleeper Retaining Wall shown as:-	
Landscape Retaining Wall shown as:-	
Sewer line	
Sewer Manhole	
Roofwater Drainage line and Catch Pit	
Stormwater Drainage Line	
Stormwater Manhole	
Stormwater Pit	
Water Main	
Water Conduit	
Water Service Point of Entry	
Underground Electricity, Street Light, Electricity Pillar & NBN	
Developer Fencing	
Concrete Pathway	
Landscape Street Tree	
Zero Setback Building Line	
Indicative Building Envelope	
Proposed Services Easement	
Indicative Parking Access Location	

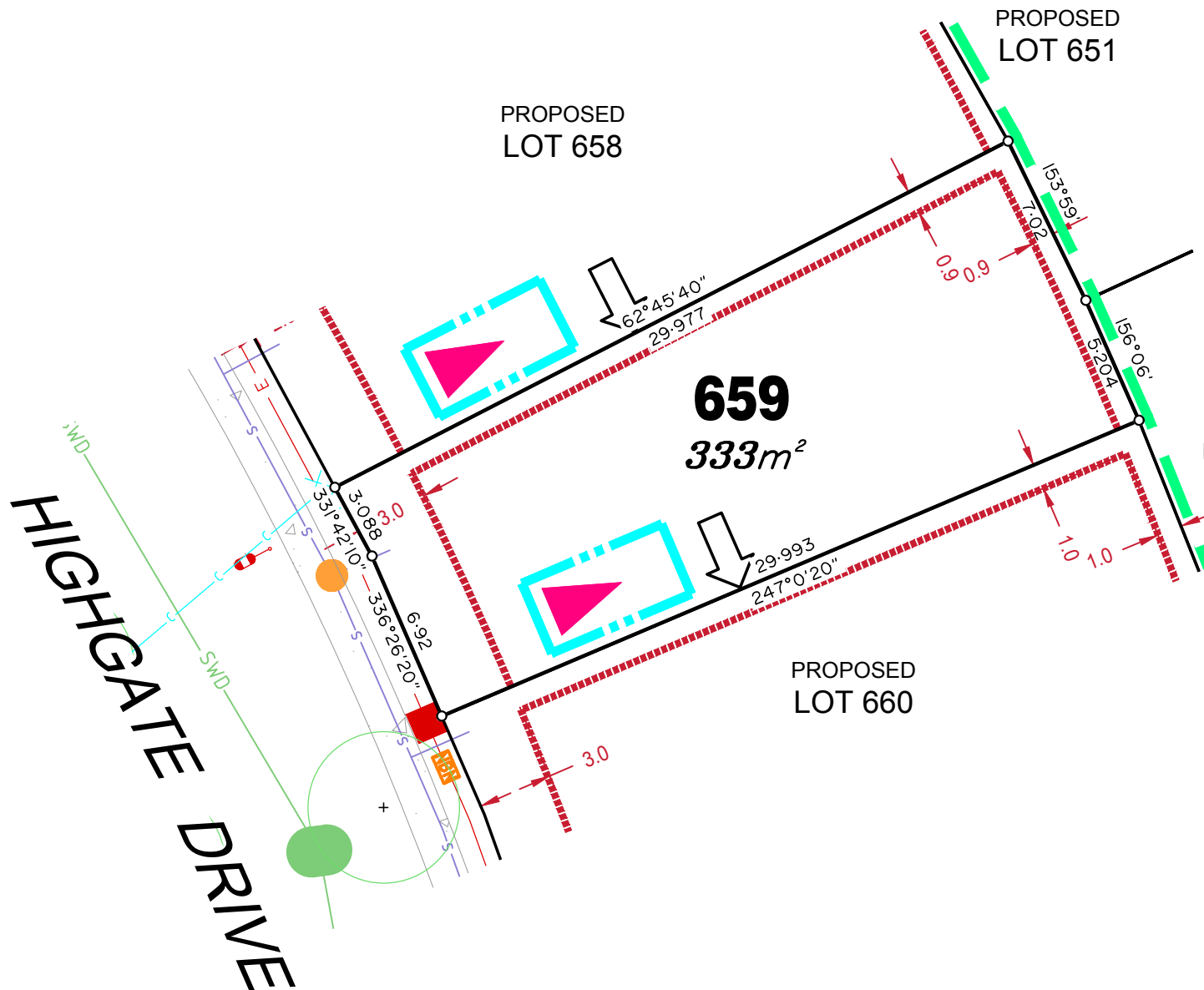
ADDITIONAL NOTES:

Allotments used as Multiple Residential Allotments in accordance with the approved Plan of Development may have a reduced primary road setback to 3.0metres as noted on the Plan of Development Table.

Compaction of any fill material placed on this site shall be completed to level one inspection and testing services in accordance with AS3798-2007.

Location of sewer, roofwater, stormwater, water reticulation and electricity lines, manholes and pits are those shown on engineering design drawings, supplied by Bradlees Meinhardt, and may differ from the as-constructed location.

Plan of Development information Supplied by RPS Group PLC.



LEGEND

Rock Retaining Wall shown as:-	
Sleeper Retaining Wall shown as:-	
Landscape Retaining Wall shown as:-	
Sewer line	
Sewer Manhole	
Roofwater Drainage line and Catch Pit	
Stormwater Drainage Line	
Stormwater Manhole	
Stormwater Pit	
Water Main	
Water Conduit	
Water Service Point of Entry	
Underground Electricity, Street Light, Electricity Pillar & NBN	
Developer Fencing	
Concrete Pathway	
Landscape Street Tree	
Zero Setback Building Line	
Indicative Building Envelope	
Proposed Services Easement	
Indicative Parking Access Location	

ADDITIONAL NOTES:

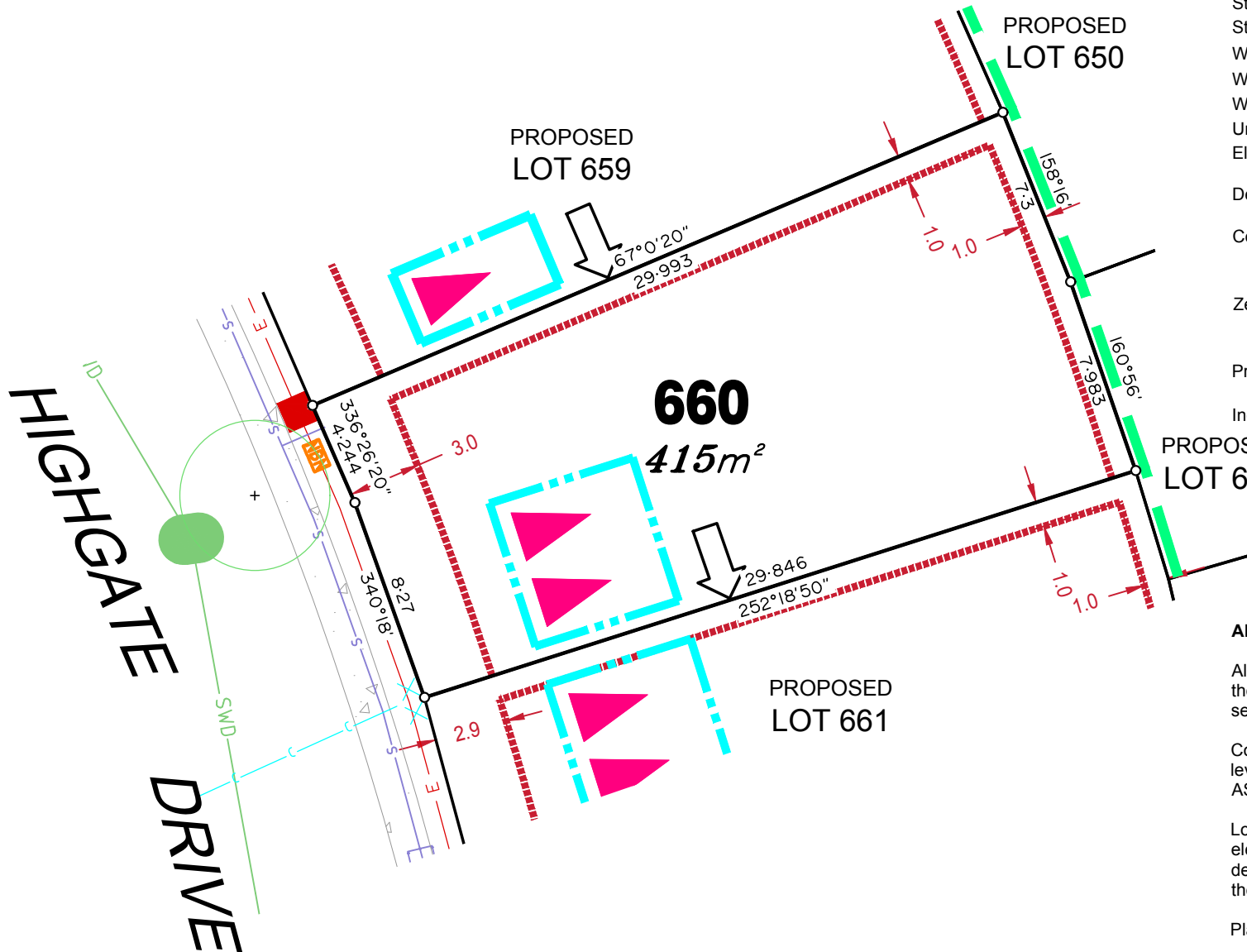
Allotments used as Multiple Residential Allotments in accordance with the approved Plan of Development may have a reduced primary road setback to 3.0metres as noted on the Plan of Development Table.

Compaction of any fill material placed on this site shall be completed to level one inspection and testing services in accordance with AS3798-2007.

Location of sewer, roofwater, stormwater, water reticulation and electricity lines, manholes and pits are those shown on engineering design drawings, supplied by Bradlees Meinhardt, and may differ from the as-constructed location.

Plan of Development information Supplied by RPS Group PLC.

Copyright © Veris Australia Pty Ltd
September 2018.



LEGEND

Rock Retaining Wall shown as:-	
Sleeper Retaining Wall shown as:-	
Landscape Retaining Wall shown as:-	
Sewer line	
Sewer Manhole	
Roofwater Drainage line and Catch Pit	
Stormwater Drainage Line	
Stormwater Manhole	
Stormwater Pit	
Water Main	
Water Conduit	
Water Service Point of Entry	
Underground Electricity, Street Light, Electricity Pillar & NBN	
Developer Fencing	
Concrete Pathway	
Landscape Street Tree	
Zero Setback Building Line	
Indicative Building Envelope	
Proposed Services Easement	
Indicative Parking Access Location	

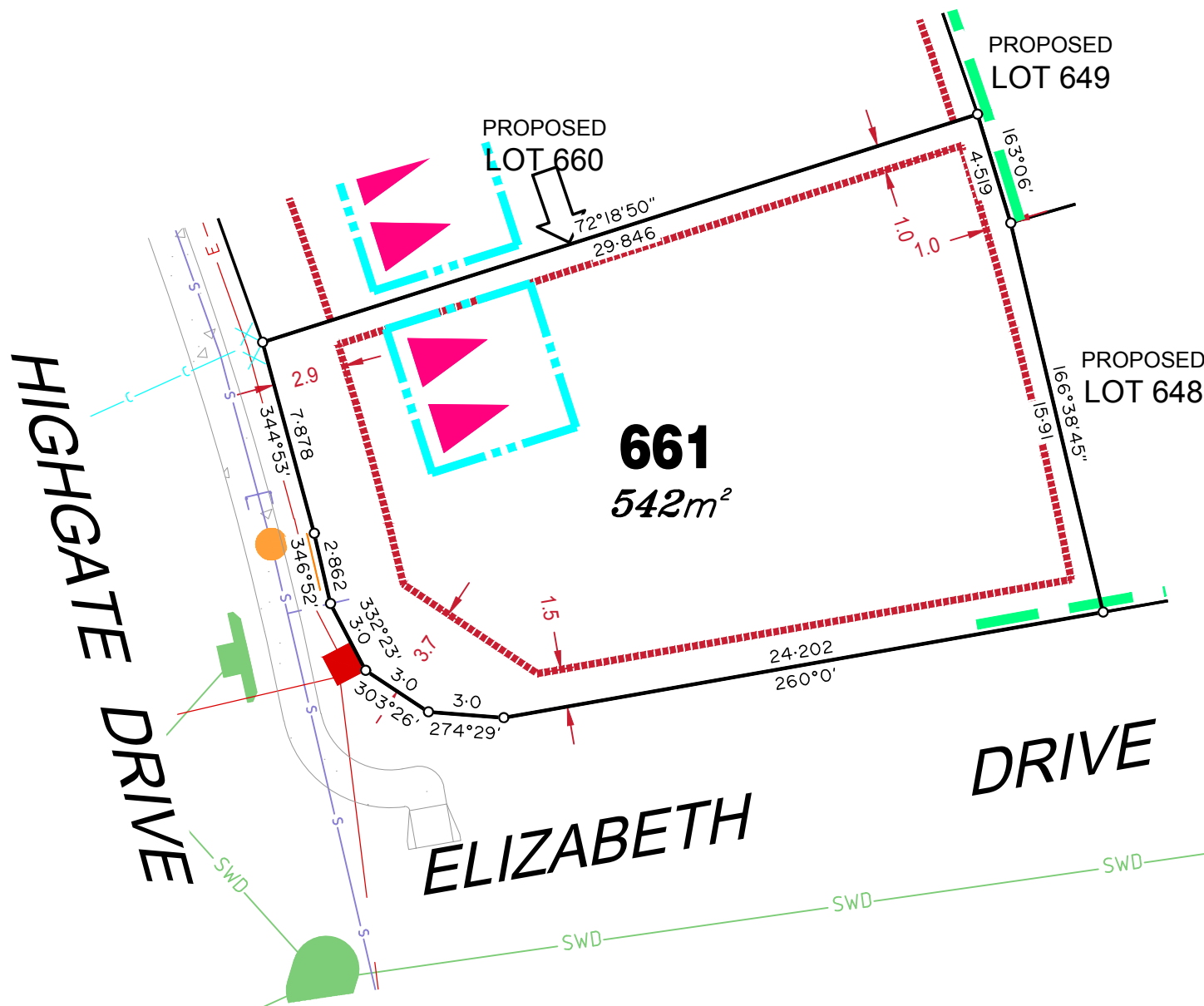
ADDITIONAL NOTES:

Allotments used as Multiple Residential Allotments in accordance with the approved Plan of Development may have a reduced primary road setback to 3.0metres as noted on the Plan of Development Table.

Compaction of any fill material placed on this site shall be completed to level one inspection and testing services in accordance with AS3798-2007.

Location of sewer, roofwater, stormwater, water reticulation and electricity lines, manholes and pits are those shown on engineering design drawings, supplied by Bradlees Meinhardt, and may differ from the as-constructed location.

Plan of Development information Supplied by RPS Group PLC.



LEGEND

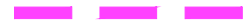
Rock Retaining Wall shown as:-



Sleeper Retaining Wall shown as:-



Landscape Retaining Wall shown as:-



Sewer line



Sewer Manhole



Roofwater Drainage line and Catch Pit



Stormwater Drainage Line



Stormwater Manhole



Stormwater Pit



Water Main



Water Conduit



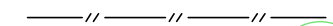
Water Service Point of Entry



Underground Electricity, Street Light, Electricity Pillar & NBN



Developer Fencing



Concrete Pathway



Landscape Street Tree



Zero Setback Building Line



Indicative Building Envelope



Proposed Services Easement



Indicative Parking Access Location



ADDITIONAL NOTES:

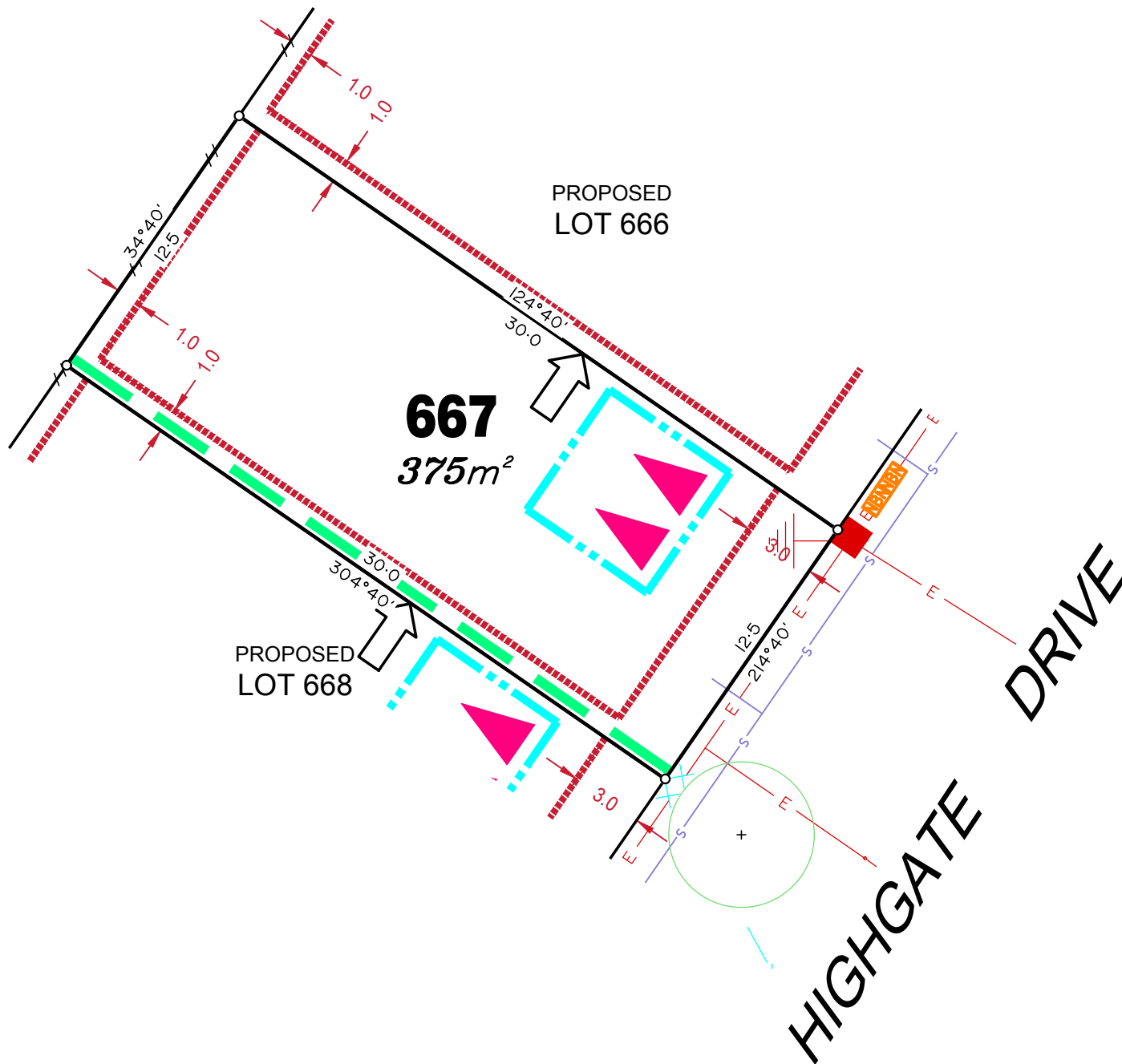
Allotments used as Multiple Residential Allotments in accordance with the approved Plan of Development may have a reduced primary road setback to 3.0metres as noted on the Plan of Development Table.

Compaction of any fill material placed on this site shall be completed to level one inspection and testing services in accordance with AS3798-2007.

Location of sewer, roofwater, stormwater, water reticulation and electricity lines, manholes and pits are those shown on engineering design drawings, supplied by Bradlees Meinhardt, and may differ from the as-constructed location.

Plan of Development information Supplied by RPS Group PLC.

Copyright © Veris Australia Pty Ltd
September 2018.



LEGEND

Rock Retaining Wall shown as:-	
Sleeper Retaining Wall shown as:-	
Landscape Retaining Wall shown as:-	
Sewer line	
Sewer Manhole	
Roofwater Drainage line and Catch Pit	
Stormwater Drainage Line	
Stormwater Manhole	
Stormwater Pit	
Water Main	
Water Conduit	
Water Service Point of Entry	
Underground Electricity, Street Light, Electricity Pillar & NBN	
Developer Fencing	
Concrete Pathway	
Landscape Street Tree	
Zero Setback Building Line	
Indicative Building Envelope	
Proposed Services Easement	
Indicative Parking Access Location	

ADDITIONAL NOTES:

Allotments used as Multiple Residential Allotments in accordance with the approved Plan of Development may have a reduced primary road setback to 3.0metres as noted on the Plan of Development Table.

Compaction of any fill material placed on this site shall be completed to level one inspection and testing services in accordance with AS3798-2007.

Location of sewer, roofwater, stormwater, water reticulation and electricity lines, manholes and pits are those shown on engineering design drawings, supplied by Bradlees Meinhardt, and may differ from the as-constructed location.

Plan of Development information Supplied by RPS Group PLC.

Copyright © Veris Australia Pty Ltd
September 2018.