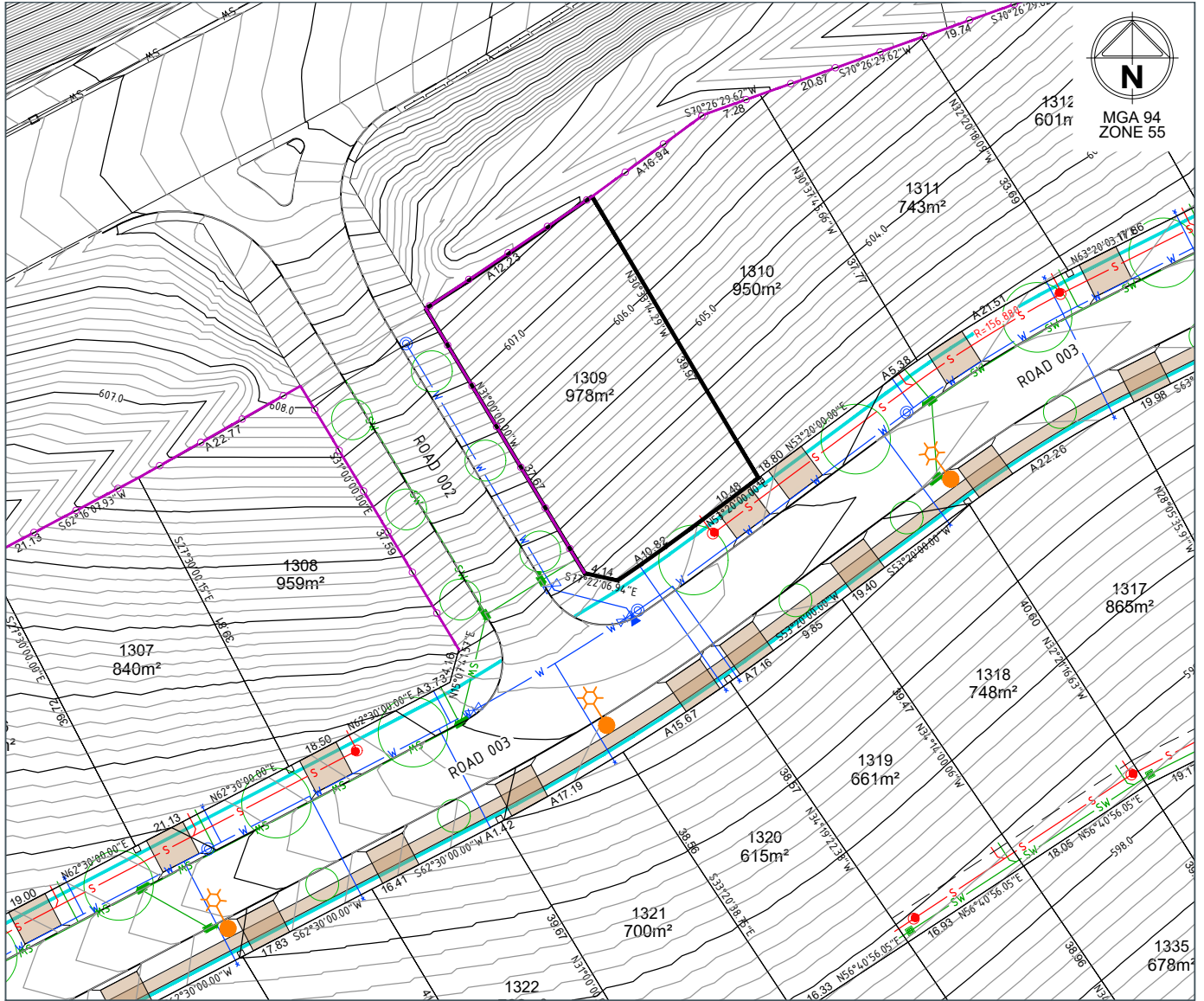


Jumping Creek

Home is here.

LOT 1309

LOT PLAN LAYOUT



LOT LAYOUT - SCALE 1:400 (A4)

REVISION --- DATE

LEGEND

LOT BOUNDARY	—	WATER SERVICES TRENCH (Electricity, NBN)	— W —
FINISHED SURFACE CONTOUR (0.2m)	—590.0—	STREETLIGHT	☀
BLOCK AREA / BOUNDARY LENGTH	400m ² 4.54	SUBSTATION	☐
BLOCK BEARING	90°00'00"	ELECTRICAL PILLAR / PIT	☐
EASEMENT (Sewer and/or Stormwater)	---	NBN PIT	☐
DRAINAGE / STRUCTURE	— SW —	DRIVEWAY LOCATION	☐
SEWER / STRUCTURE	— S —		
SEWER RISING MAIN	— SRM —		

STREET TREE/EXISTING TREE	○
PATH (1.5m wide)	—
RETAINING WALL	—
BAL 29 LINE	— BAL —
1.8m HIGH COLOURBOND FENCE BY DEVELOPER	—

LOCALITY PLAN



DRAFT

© Spiire Australia Pty Ltd All Rights Reserved
 This document is produced by Spiire Australia Pty Ltd solely for the benefit of and use by the client in accordance with the terms of the retainer. Spiire Australia Pty Ltd does not and shall not assume any responsibility or liability whatsoever to any third party arising out of any use or reliance by third party on the content of this document.

Disclaimer: All care has been taken in the preparation of this material. No responsibility is taken by the vendor for any errors or omissions, and details may be subject to change. Artwork, images and plans are artists impressions only and are not relied on as a definitive reference. All road designs, contours, lot sizes, lot dimensions, easements, covenants, trees, streetlights, substations, pit and pillars are preliminary only and are subject to final survey. For final Lot numbers refer registered deposited plans (DP).



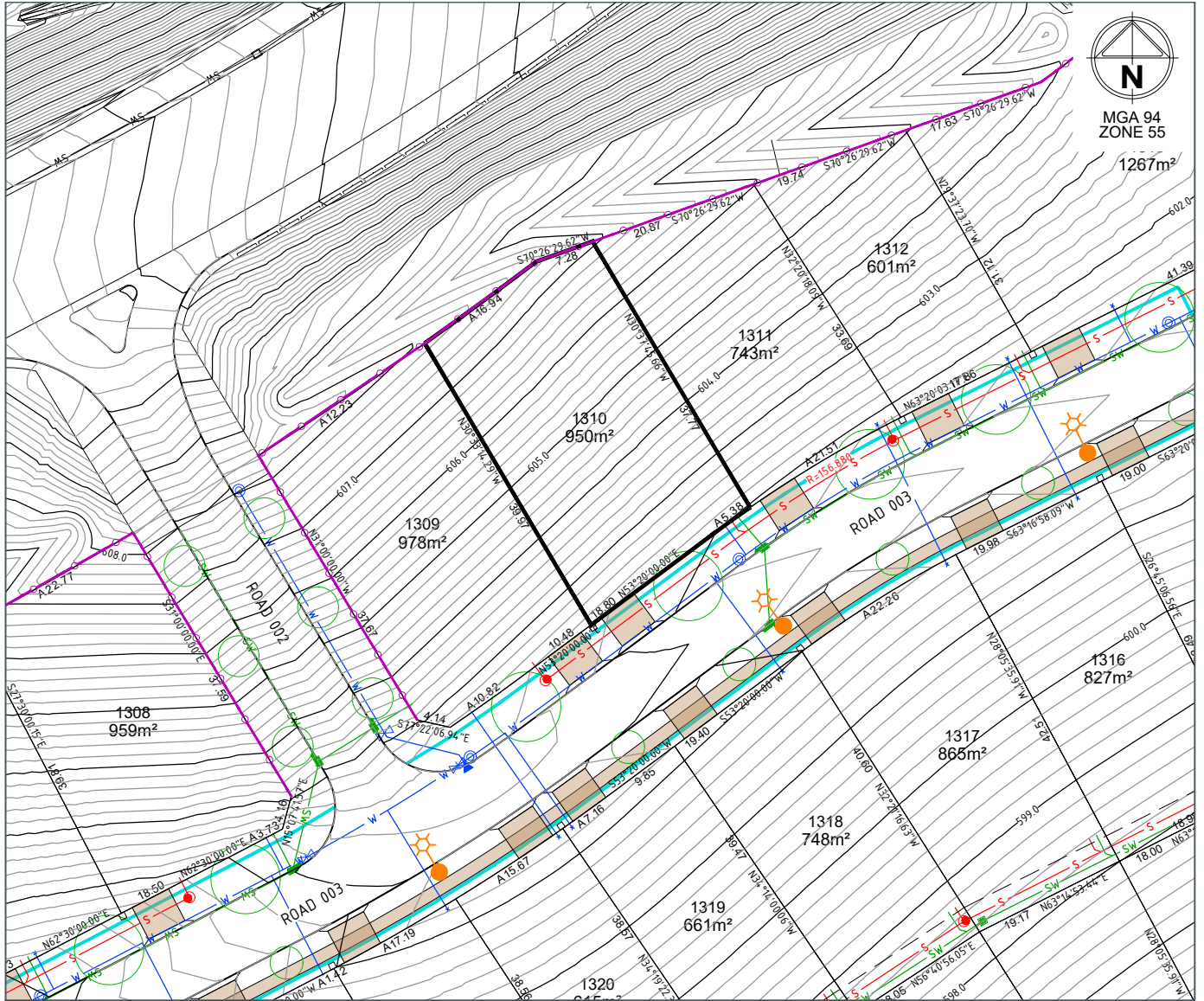
file name: 307957CG60.dwg, layout name: CG69, plotted by: Carl O'Hara, file location: G:\307957\307957.dwg\ALCAD\Lot_Disclosure_Plan\ACAD plot_date: 03/09/2021 3:34 PM Sheet 1 of 1

Jumping Creek

Home is here.

LOT 1310

LOT PLAN LAYOUT



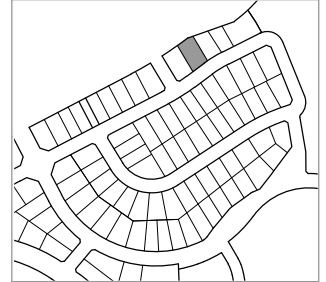
LOT LAYOUT - SCALE 1:400 (A4)

REVISION --- DATE

LEGEND

LOT BOUNDARY	—	WATER SERVICES TRENCH (Electricity, NBN)	— W —	STREET TREE/EXISTING TREE	
FINISHED SURFACE CONTOUR (0.2m)	—590.0—	STREETLIGHT		PATH (1.5m wide)	
BLOCK AREA / BOUNDARY LENGTH	400m² 4.54	SUBSTATION		RETAINING WALL	
BLOCK BEARING	90°00'00"	ELECTRICAL PILLAR / PIT		BAL 29 LINE	— BAL —
EASEMENT (Sewer and/or Stormwater)	---	NBN PIT		1.8m HIGH COLOURBOND FENCE BY DEVELOPER	
DRAINAGE / STRUCTURE		DRIVEWAY LOCATION			
SEWER / STRUCTURE					
SEWER RISING MAIN					

LOCALITY PLAN



DRAFT

© Spiire Australia Pty Ltd All Rights Reserved
 This document is produced by Spiire Australia Pty Ltd solely for the benefit of and use by the client in accordance with the terms of the retainer. Spiire Australia Pty Ltd does not and shall not assume any responsibility or liability whatsoever to any third party arising out of any use or reliance by third party on the content of this document.

Disclaimer: All care has been taken in the preparation of this material. No responsibility is taken by the vendor for any errors or omissions, and details may be subject to change. Artwork, images and plans are artists impressions only and are not relied on as a definitive reference. All road designs, contours, lot sizes, lot dimensions, easements, covenants, trees, streetlights, substations, pit and pillars are preliminary only and are subject to final survey. For final Lot numbers refer registered deposited plans (DP).



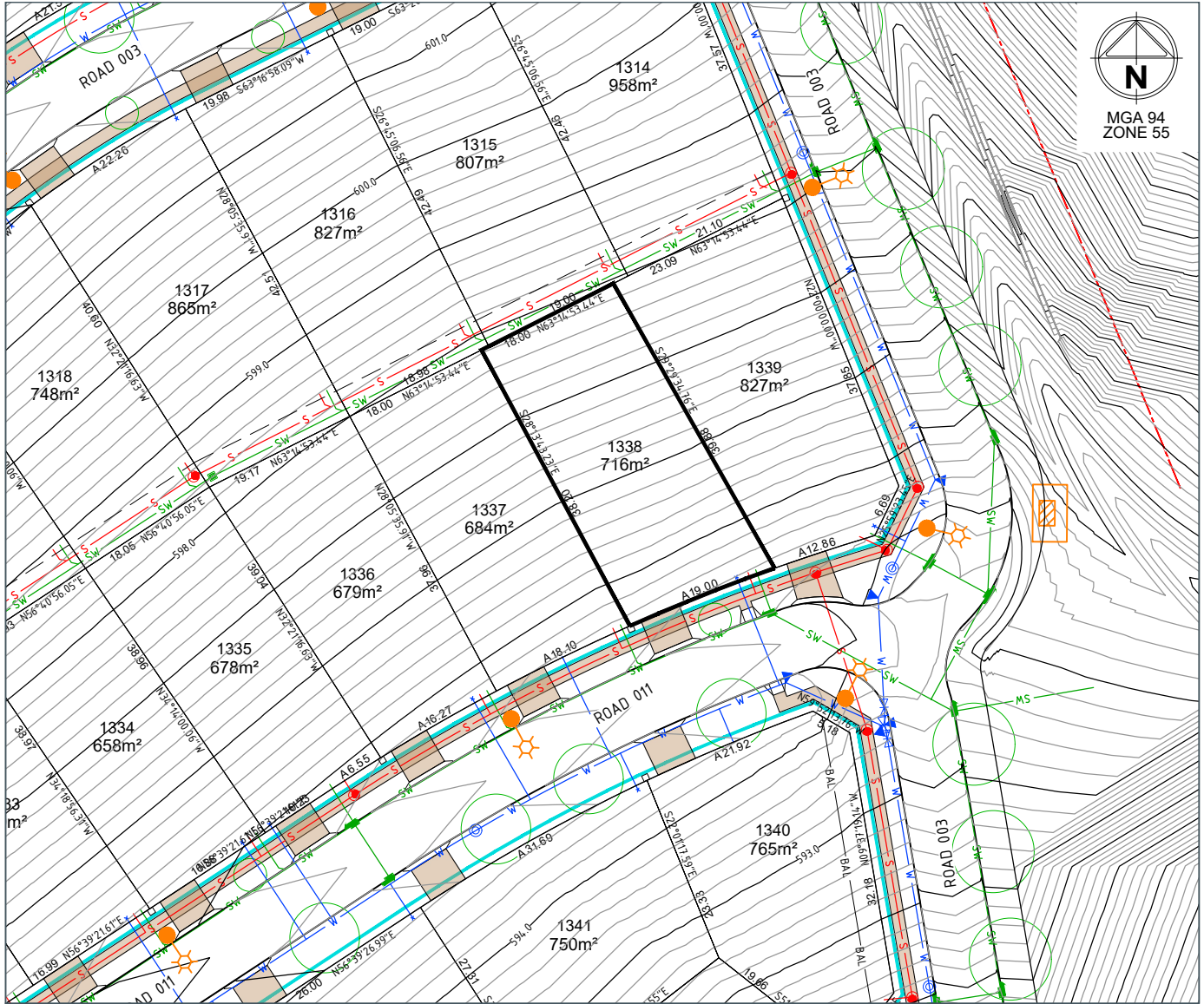
file name: 307957CG60d49_layout_name_CG69_richard by Carl O'H...
 file location: G:\307957\307957\civil\ALCAD\Lot_Distorsure_Plan\A4AD_Sheet...
 of Sheets

Jumping Creek

Home is here.

LOT 1338

LOT PLAN LAYOUT



LOT LAYOUT - SCALE 1:400 (A4)

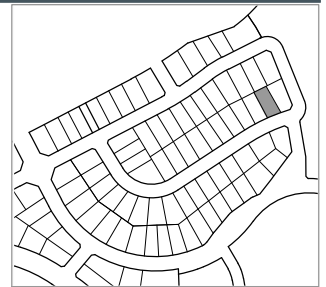
REVISION --- DATE

LEGEND

LOT BOUNDARY	— 590.0 —	WATER SERVICES TRENCH (Electricity, NBN)	— W —
FINISHED SURFACE CONTOUR (0.2m)	— 590.0 —	STREETLIGHT	— S —
BLOCK AREA / BOUNDARY LENGTH	400m ² 4.54	SUBSTATION	— SW —
BLOCK BEARING	90°00'00"	ELECTRICAL PILLAR / PIT	— S —
EASEMENT (Sewer and/or Stormwater)	---	NBN PIT	— SRM —
DRAINAGE / STRUCTURE	— SW —	DRIVEWAY LOCATION	— SRM —
SEWER / STRUCTURE	— S —		
SEWER RISING MAIN	— SRM —		

STREET TREE/EXISTING TREE	— (Symbol) —
PATH (1.5m wide)	— (Symbol) —
RETAINING WALL	— (Symbol) —
BAL 29 LINE	— BAL —
1.8m HIGH COLOURBOND FENCE BY DEVELOPER	— (Symbol) —

LOCALITY PLAN



DRAFT

© Spiire Australia Pty Ltd All Rights Reserved
 This document is produced by Spiire Australia Pty Ltd solely for the benefit of and use by the client in accordance with the terms of the retainer. Spiire Australia Pty Ltd does not and shall not assume any responsibility or liability whatsoever to any third party arising out of any use or reliance by third party on the content of this document.

Disclaimer: All care has been taken in the preparation of this material. No responsibility is taken by the vendor for any errors or omissions, and details may be subject to change. Artwork, images and plans are artists impressions only and are not relied on as a definitive reference. All road designs, contours, lot sizes, lot dimensions, easements, covenants, trees, streetlights, substations, pit and pillars are preliminary only and are subject to final survey. For final Lot numbers refer registered deposited plans (DP).



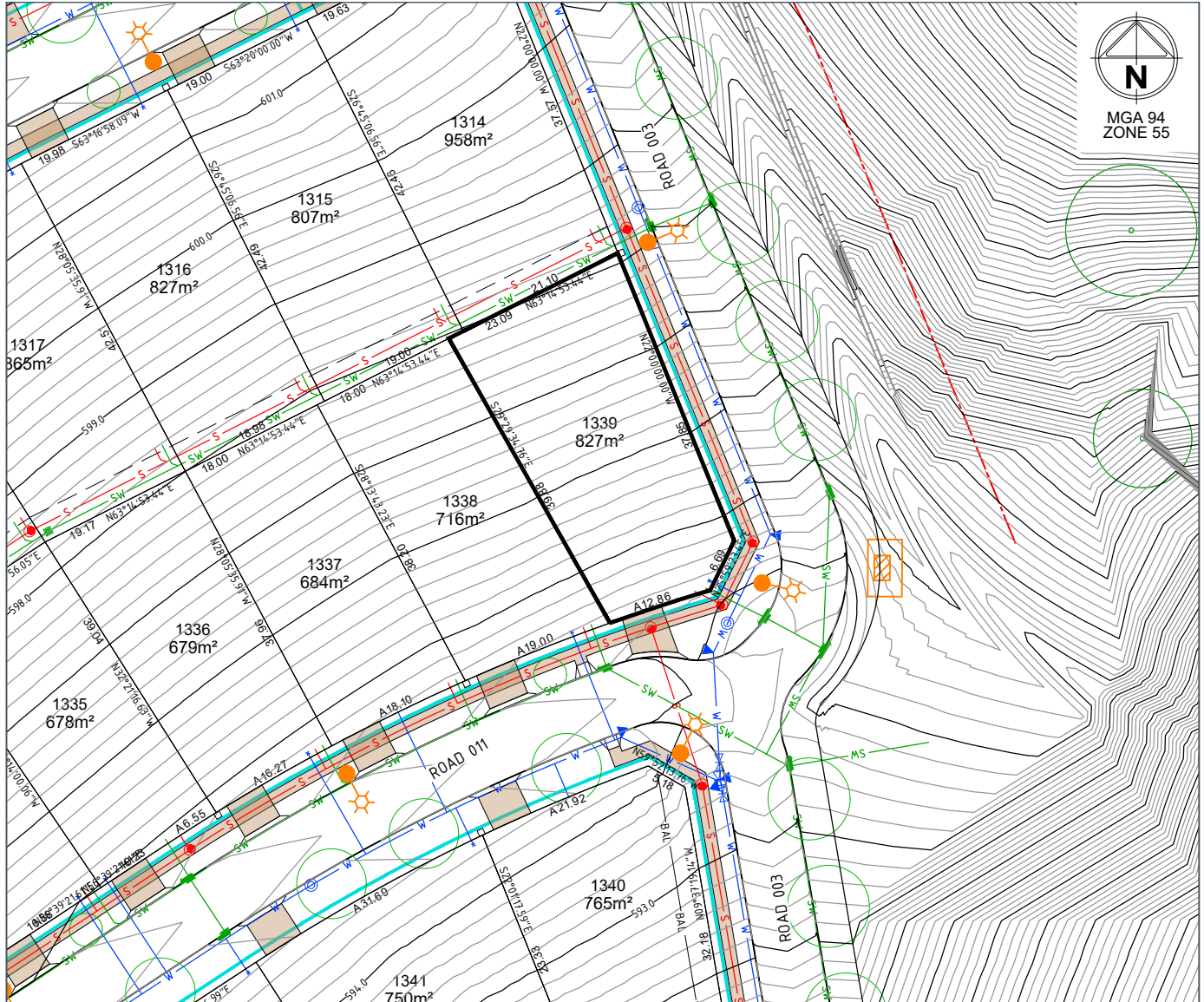
file name: 307857CG250.dwg, layout name: CG259, created by: Carl Oth, file location: G:\307857\307857\Drawings\CAD\Lot_Distorsure_Plan\A4\Lot_1338.dwg, plot date: 03/09/2021 4:01 PM, Sheet 1 of 1

Jumping Creek

Home is here.

LOT 1339

LOT PLAN LAYOUT



LOT LAYOUT - SCALE 1:400 (A4)

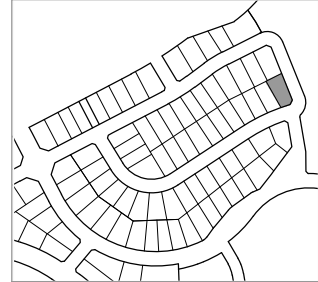
REVISION --- DATE

LEGEND

LOCALITY PLAN

LOT BOUNDARY	—	WATER SERVICES TRENCH (Electricity, NBN)	— W —	STREET TREE/EXISTING TREE	
FINISHED SURFACE CONTOUR (0.2m)	—590.0—	STREETLIGHT		PATH (1.5m wide)	
BLOCK AREA / BOUNDARY LENGTH	400m² 4.54	SUBSTATION		RETAINING WALL	
BLOCK BEARING	90°00'00"	ELECTRICAL PILLAR / PIT		BAL 29 LINE	
EASEMENT (Sewer and/or Stormwater)	---	NBN PIT		1.8m HIGH COLOURBOND FENCE BY DEVELOPER	
DRAINAGE / STRUCTURE		DRIVEWAY LOCATION			
SEWER / STRUCTURE					
SEWER RISING MAIN					

DRAFT



© Spiire Australia Pty Ltd All Rights Reserved
This document is produced by Spiire Australia Pty Ltd solely for the benefit of and use by the client in accordance with the terms of the retainer. Spiire Australia Pty Ltd does not and shall not assume any responsibility or liability whatsoever to any third party arising out of any use or reliance by third party on the content of this document.

Disclaimer: All care has been taken in the preparation of this material. No responsibility is taken by the vendor for any errors or omissions, and details may be subject to change. Artwork, images and plans are artists impressions only and are not relied on as a definitive reference. All road designs, contours, lot sizes, lot dimensions, easements, covenants, trees, streetlights, substations, pit and pillars are preliminary only and are subject to final survey. For final Lot numbers refer registered deposited plans (DP).



file name: 307857CG250.dwg, layout name: CG260, created by: Carl O'H, file location: G:\307857\307857\Drawings\Lot_Distorsure_Plan\A4\Lot_1339.dwg, plot date: 03/09/2021 4:02 PM, Sheet 1 of 1