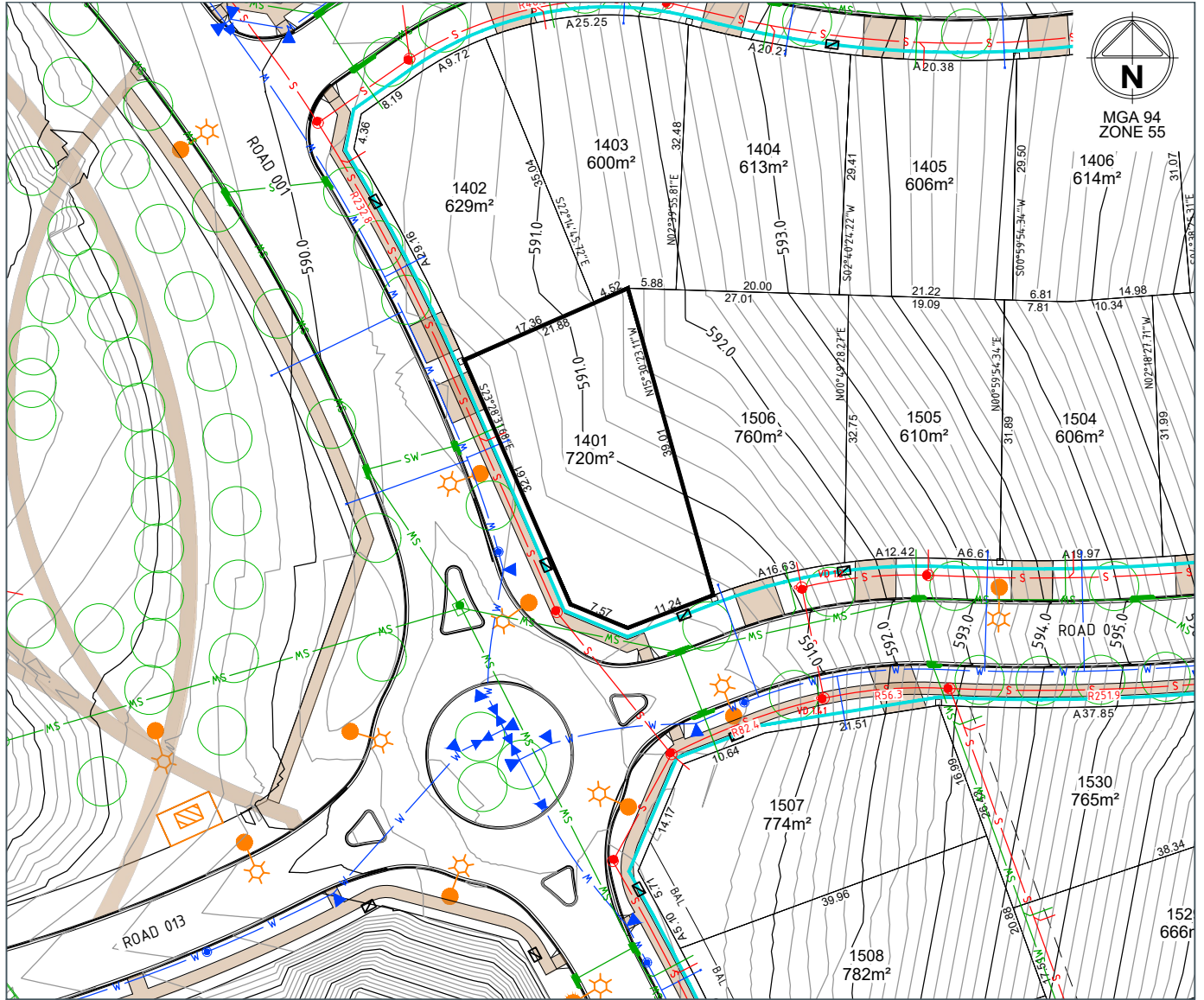


# Jumping Creek

Home is here.

# LOT 1401

## LOT PLAN LAYOUT



MGA 94  
ZONE 55

LOT LAYOUT - SCALE 1:400 (A4)

REVISION A

DATE 18/05/2022

### LEGEND

LOT BOUNDARY	—	SERVICES TRENCH (Electricity, NBN)	—
FINISHED SURFACE	—590—	STREETLIGHT	☀
CONTOURS (0.2m)		STATION	□
BLOCK AREA / BOUNDARY LENGTH	400m <sup>2</sup> 4.54	ELECTRICAL PILLAR / PIT	□
BLOCK BEARING	90°00'00"	NBN PIT	□
EASEMENT (Sewer and/or Stormwater)	- - - -	SUGGESTED DRIVEWAY LOCATION	□
DRAINAGE / STRUCTURE	⊕ SW		
SEWER / STRUCTURE	⊕ S		
WATER	⊕ W		

STREET TREE/EXISTING TREE	⊙
PATH (1.5m wide)	—
RETAINING WALL	—
BAL 29 LINE	—BAL—
COLOURBOND FENCE (BY DEVELOPER)	—
FARM FENCE (BY DEVELOPER)	—

### LOCALITY PLAN



DRAFT

© Spiire Australia Pty Ltd All Rights Reserved  
This document is produced by Spiire Australia Pty Ltd solely for the benefit of and use by the client in accordance with the terms of the retainer. Spiire Australia Pty Ltd does not and shall not assume any responsibility or liability whatsoever to any third party arising out of any use or reliance by third party on the content of this document.

Disclaimer: All care has been taken in the preparation of this material. No responsibility is taken by the vendor for any errors or omissions, and details may be subject to change. Artwork, images and plans are artists impressions only and are not relied on as a definitive reference. All road designs, contours, lot sizes, lot dimensions, easements, covenants, trees, streetlights, substations, pit and pillars are preliminary only and are subject to final survey. For final Lot numbers refer registered deposited plans (DP).



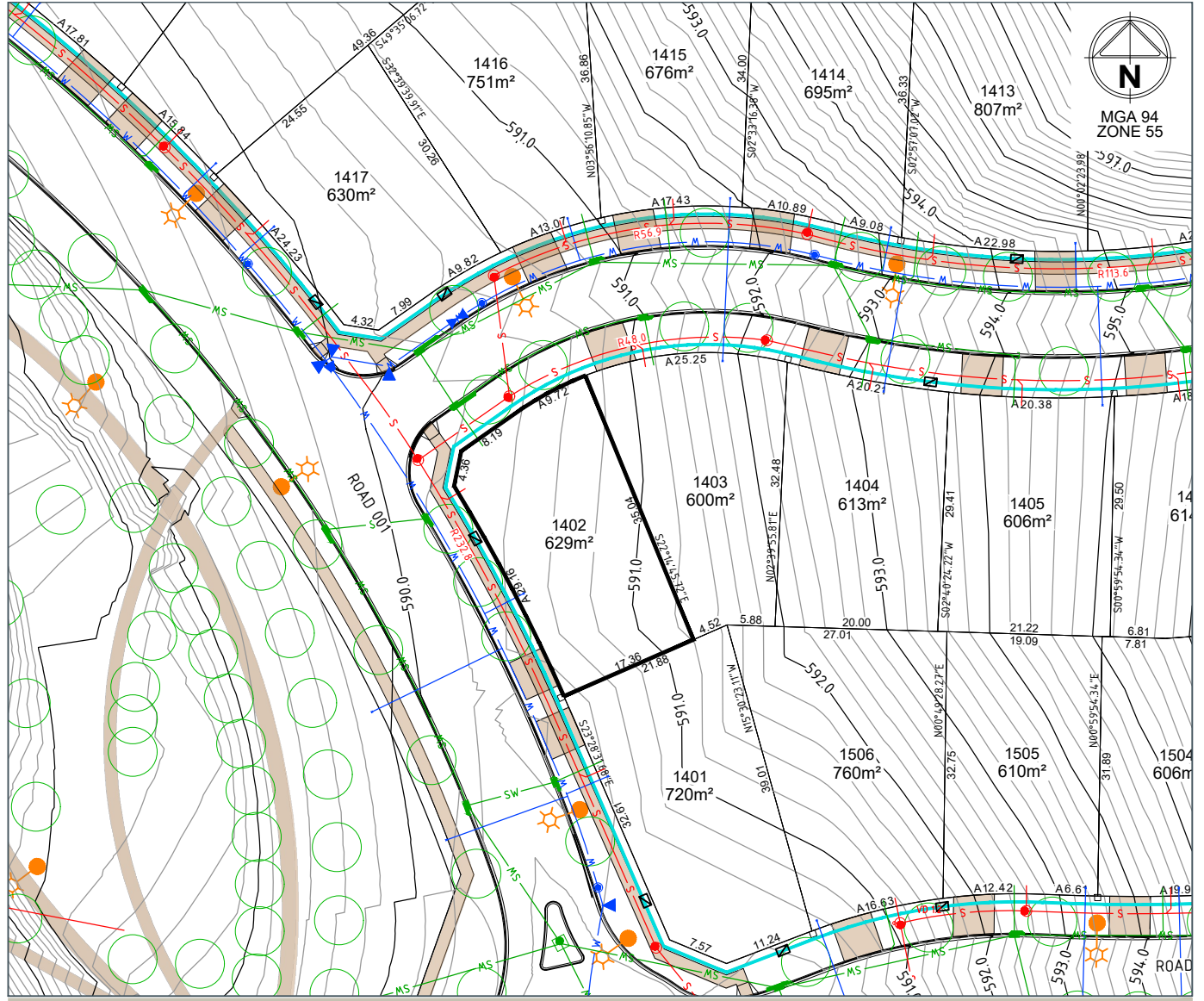
file name: 307857CE350.dwg, layout name: CE350, sheet: 20/05/2022 9:10 AM, Sheet 1 of 2, file location: G:\307857\307857\civil\A\CAD\Lot\_Distorsure\_Plan\A4\Lot\_1401.dwg

# Jumping Creek

Home is here.

# LOT 1402

## LOT PLAN LAYOUT



LOT LAYOUT - SCALE 1:400 (A4)

REVISION A

DATE 18/05/2022

**LEGEND**

- LOT BOUNDARY
- FINISHED SURFACE CONTOURS (0.2m)
- BLOCK AREA / BOUNDARY LENGTH
- BLOCK BEARING
- EASEMENT (Sewer and/or Stormwater)
- DRAINAGE / STRUCTURE
- SEWER / STRUCTURE
- WATER
- SERVICES TRENCH (Electricity, NBN)
- STREETLIGHT
- SUBSTATION
- ELECTRICAL PILLAR / PIT
- NBN PIT
- SUGGESTED DRIVEWAY LOCATION

- STREET TREE/EXISTING TREE
- PATH (1.5m wide)
- RETAINING WALL
- BAL 29 LINE
- COLOURBOND FENCE (BY DEVELOPER)
- FARM FENCE (BY DEVELOPER)

**LOCALITY PLAN**



**DRAFT**

© Spiire Australia Pty Ltd All Rights Reserved  
 This document is produced by Spiire Australia Pty Ltd solely for the benefit of and use by the client in accordance with the terms of the retainer. Spiire Australia Pty Ltd does not and shall not assume any responsibility or liability whatsoever to any third party arising out of any use or reliance by third party on the content of this document.

Disclaimer: All care has been taken in the preparation of this material. No responsibility is taken by the vendor for any errors or omissions, and details may be subject to change. Artwork, images and plans are artists impressions only and are not relied on as a definitive reference. All road designs, contours, lot sizes, lot dimensions, easements, covenants, trees, streetlights, substations, pit and pillars are preliminary only and are subject to final survey. For final Lot numbers refer registered deposited plans (DP).



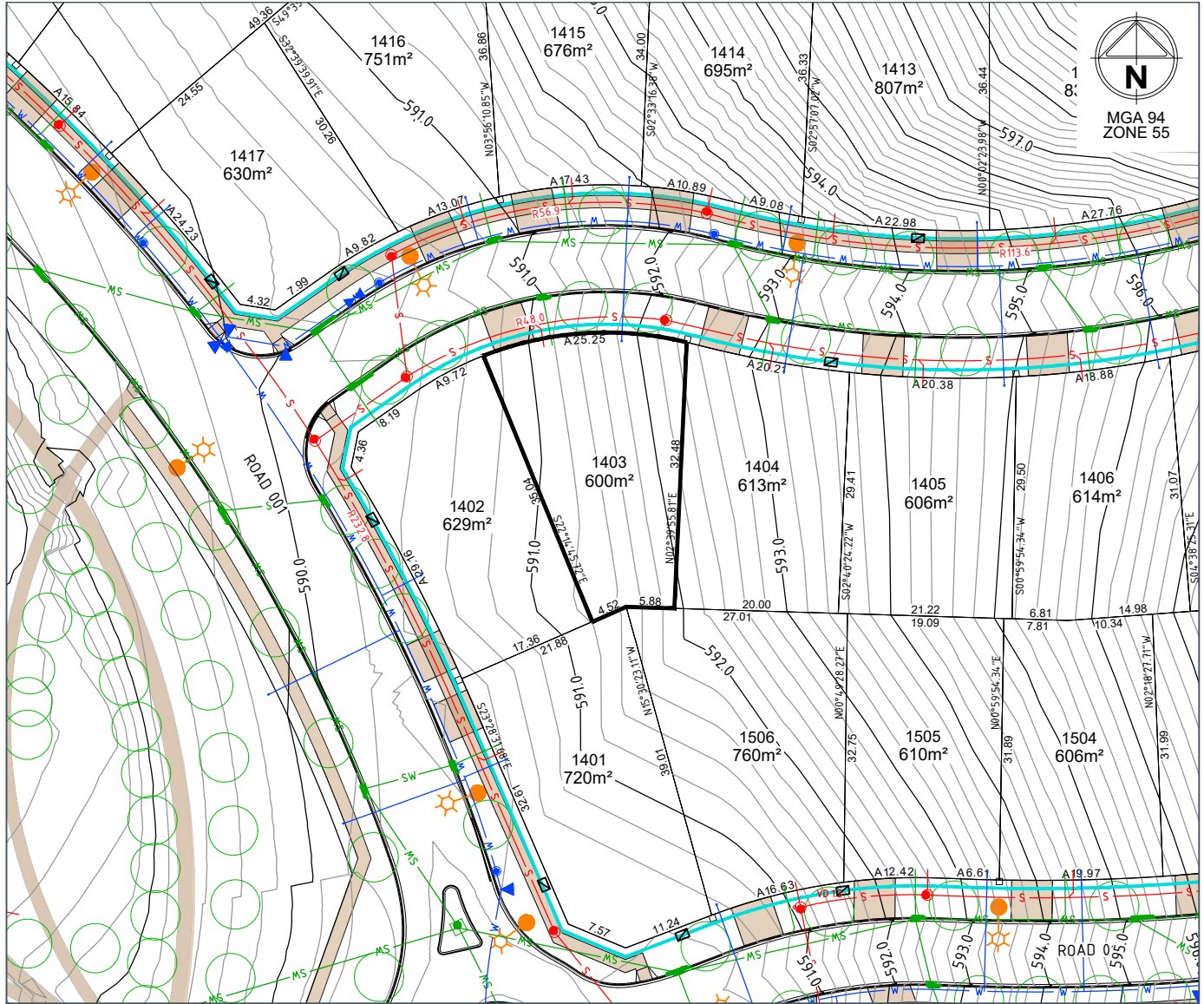
file name: 307857CG350.dwg, layout name: CG351, plotted by: Benjamin Carrillo, file location: G:\3\307857\307857\Kwin\ALCAD\Lot\_Distorsure\_Plan\A4\DP plot date: 20/05/2022 9:10 AM, Sheet 1 of 1

# Jumping Creek

Home is here.

# LOT 1403

## LOT PLAN LAYOUT



LOT LAYOUT - SCALE 1:400 (A4)

REVISION A

DATE 18/05/2022

**LEGEND**

LOT BOUNDARY	—	SERVICES TRENCH (Electricity, NBN)	—
FINISHED SURFACE CONTOURS (0.2m)	—590—	STREETLIGHT	☀
BLOCK AREA / BOUNDARY LENGTH	400m <sup>2</sup> 4.54	SUBSTATION	☐
BLOCK BEARING	90°00'00"	ELECTRICAL PILLAR / PIT	☐
EASEMENT (Sewer and/or Stormwater)	---	NBN PIT	☐
DRAINAGE / STRUCTURE	—SW—	SUGGESTED DRIVEWAY LOCATION	☐
SEWER / STRUCTURE	—S—		
WATER	—W—		

STREET TREE/EXISTING TREE	○
PATH (1.5m wide)	—
RETAINING WALL	—
BAL 29 LINE	—BAL—
COLOURBOND FENCE (BY DEVELOPER)	---
FARM FENCE (BY DEVELOPER)	---

**LOCALITY PLAN**



**DRAFT**

© Spiire Australia Pty Ltd All Rights Reserved  
This document is produced by Spiire Australia Pty Ltd solely for the benefit of and use by the client in accordance with the terms of the retainer. Spiire Australia Pty Ltd does not and shall not assume any responsibility or liability whatsoever to any third party arising out of any use or reliance by third party on the content of this document.

Disclaimer: All care has been taken in the preparation of this material. No responsibility is taken by the vendor for any errors or omissions, and details may be subject to change. Artwork, images and plans are artists impressions only and are not relied on as a definitive reference. All road designs, contours, lot sizes, lot dimensions, easements, covenants, trees, streetlights, substations, pit and pillars are preliminary only and are subject to final survey. For final Lot numbers refer registered deposited plans (DP).



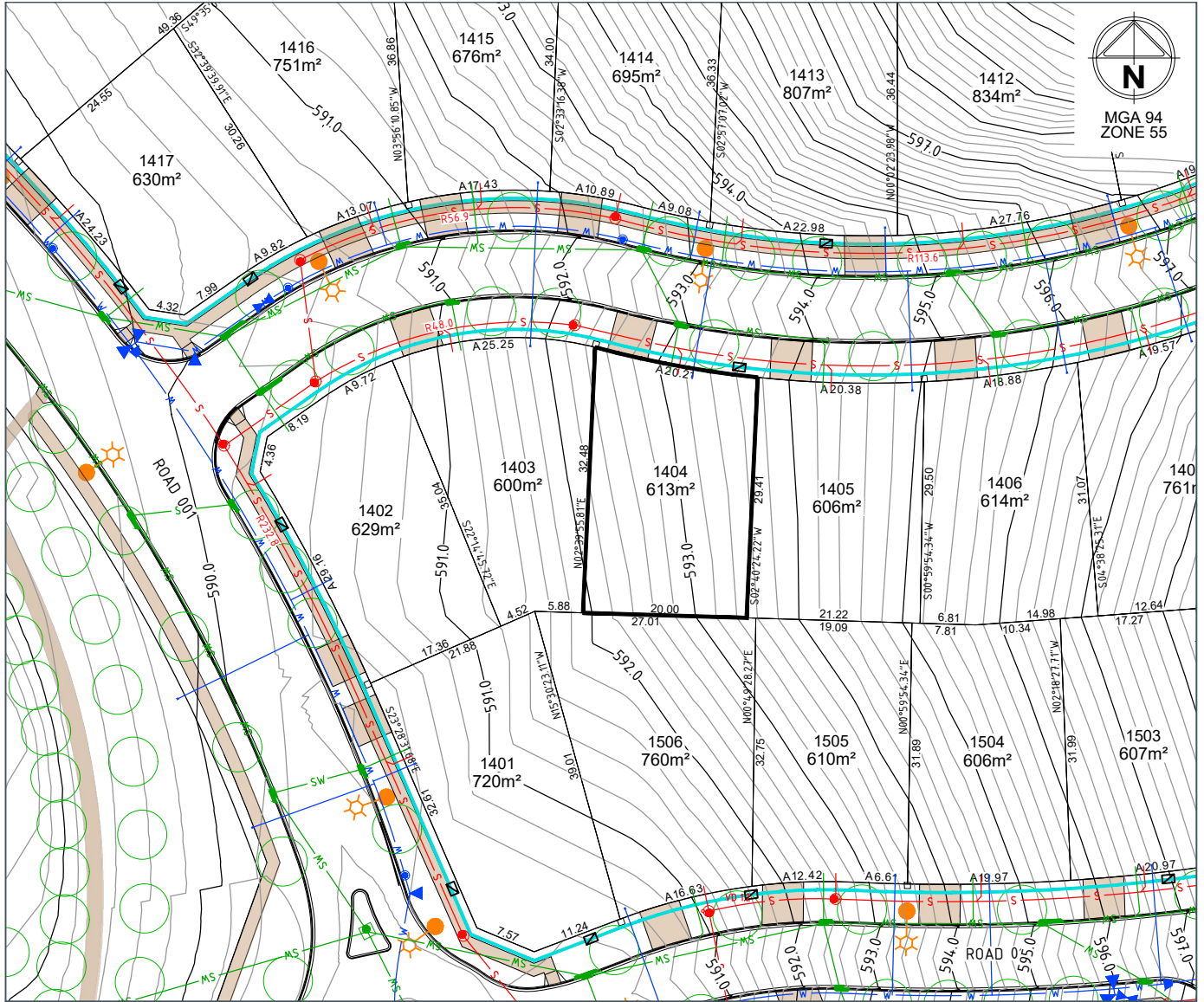
file name: 307857CG350.dwg, layout name: CG352, created by: Benjamin Capill, date: 20/05/2022 9:10 AM, Sheet 1 of 1, file location: G:\307857\307857\1\civil\A\CAD\Lot\_Distlosure\_Plan\A\CAD\Lot\_Distlosure\_Plan.dwg

# Jumping Creek

Home is here.

# LOT 1404

## LOT PLAN LAYOUT



LOT LAYOUT - SCALE 1:400 (A4)

REVISION A

DATE 18/05/2022

### LEGEND

LOT BOUNDARY	—	SERVICES TRENCH (Electricity, NBN)	—
FINISHED SURFACE CONTOURS (0.2m)	—590—	STREETLIGHT	☀
BLOCK AREA / BOUNDARY LENGTH	400m² 4.54	SUBSTATION	☐
BLOCK BEARING	90°00'00"	ELECTRICAL PILLAR / PIT	☐
EASEMENT (Sewer and/or Stormwater)	- - - -	NBN PIT	☐
DRAINAGE / STRUCTURE	—●— SW	SUGGESTED DRIVEWAY LOCATION	■
SEWER / STRUCTURE	—●— S		
WATER	—●— W		

STREET TREE/EXISTING TREE	○
PATH (1.5m wide)	—
RETAINING WALL	—
BAL 29 LINE	—BAL—
COLOURBOND FENCE (BY DEVELOPER)	—
FARM FENCE (BY DEVELOPER)	—

### LOCALITY PLAN



DRAFT

© Spiire Australia Pty Ltd All Rights Reserved  
This document is produced by Spiire Australia Pty Ltd solely for the benefit of and use by the client in accordance with the terms of the retainer. Spiire Australia Pty Ltd does not and shall not assume any responsibility or liability whatsoever to any third party arising out of any use or reliance by third party on the content of this document.

Disclaimer: All care has been taken in the preparation of this material. No responsibility is taken by the vendor for any errors or omissions, and details may be subject to change. Artwork, images and plans are artists impressions only and are not relied on as a definitive reference. All road designs, contours, lot sizes, lot dimensions, easements, covenants, trees, streetlights, substations, pit and pillars are preliminary only and are subject to final survey. For final Lot numbers refer registered deposited plans (DP).



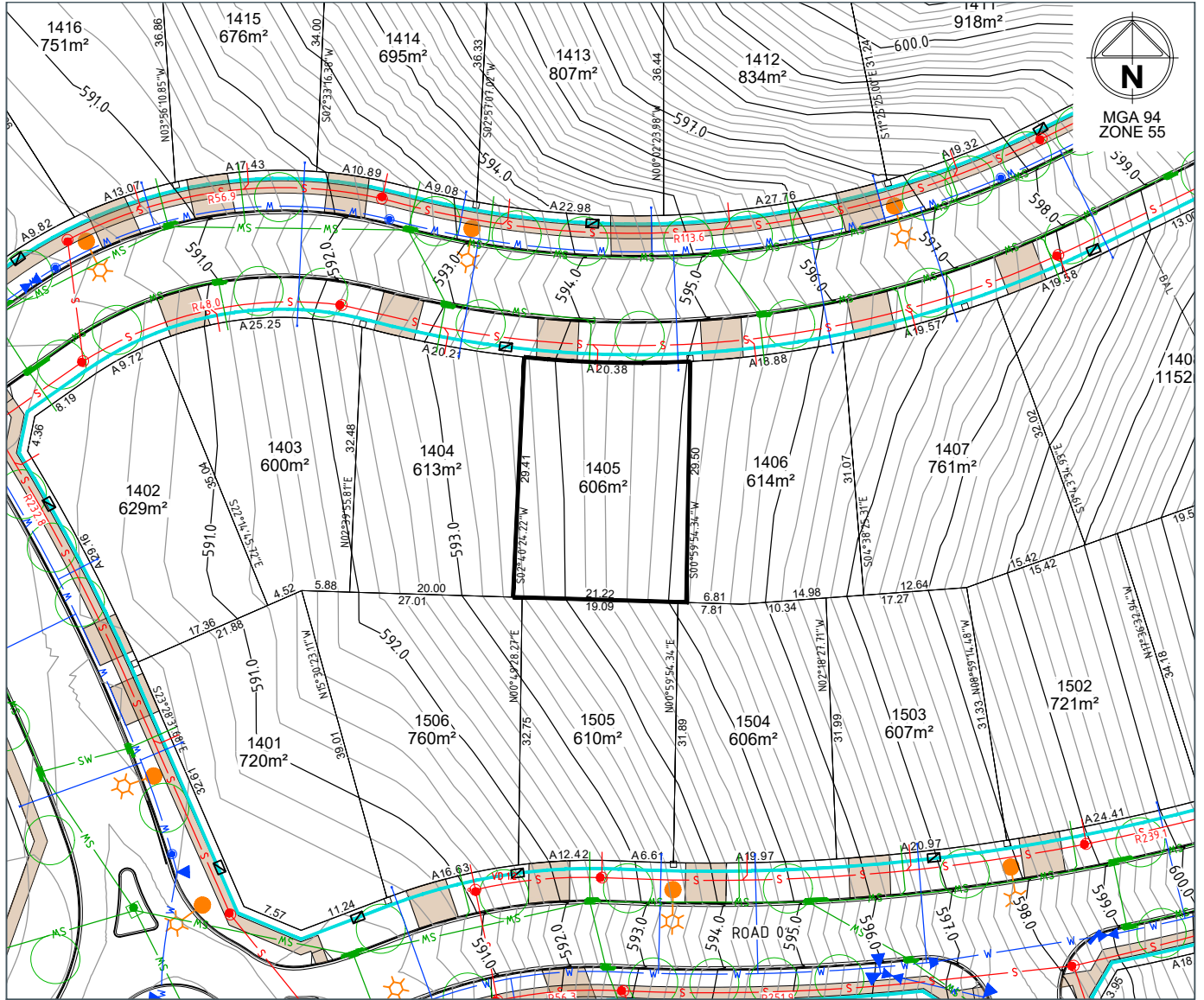
file name: 307857CG350.dwg, layout name: CG353  
file location: G:\307857\307857\civil\ALCAD\Lot\_Distorsure\_Plan\ACAD\Lot

# Jumping Creek

Home is here.

# LOT 1405

## LOT PLAN LAYOUT



LOT LAYOUT - SCALE 1:400 (A4)

REVISION A

DATE 18/05/2022

### LEGEND

LOT BOUNDARY	—	SERVICES TRENCH (Electricity, NBN)	—
FINISHED SURFACE	—	STREETLIGHT	☀
CONTOURS (0.2m)	—590—	SUBSTATION	☐
BLOCK AREA / BOUNDARY LENGTH	400m² 4.54	ELECTRICAL PILLAR / PIT	☐
BLOCK BEARING	90°00'00"	NBN PIT	☐
EASEMENT (Sewer and/or Stormwater)	---	SUGGESTED DRIVEWAY LOCATION	☐
DRAINAGE / STRUCTURE	—SW—		
SEWER / STRUCTURE	—S—		
WATER	—W—		

STREET TREE/EXISTING TREE	○
PATH (1.5m wide)	—
RETAINING WALL	—
BAL 29 LINE	—BAL—
COLOURBOND FENCE (BY DEVELOPER)	---
FARM FENCE (BY DEVELOPER)	---

### LOCALITY PLAN



DRAFT

© Spiire Australia Pty Ltd All Rights Reserved  
This document is produced by Spiire Australia Pty Ltd solely for the benefit of and use by the client in accordance with the terms of the retainer. Spiire Australia Pty Ltd does not and shall not assume any responsibility or liability whatsoever to any third party arising out of any use or reliance by third party on the content of this document.

Disclaimer: All care has been taken in the preparation of this material. No responsibility is taken by the vendor for any errors or omissions, and details may be subject to change. Artwork, images and plans are artists impressions only and are not relied on as a definitive reference. All road designs, contours, lot sizes, lot dimensions, easements, covenants, trees, streetlights, substations, pit and pillars are preliminary only and are subject to final survey. For final Lot numbers refer registered deposited plans (DP).



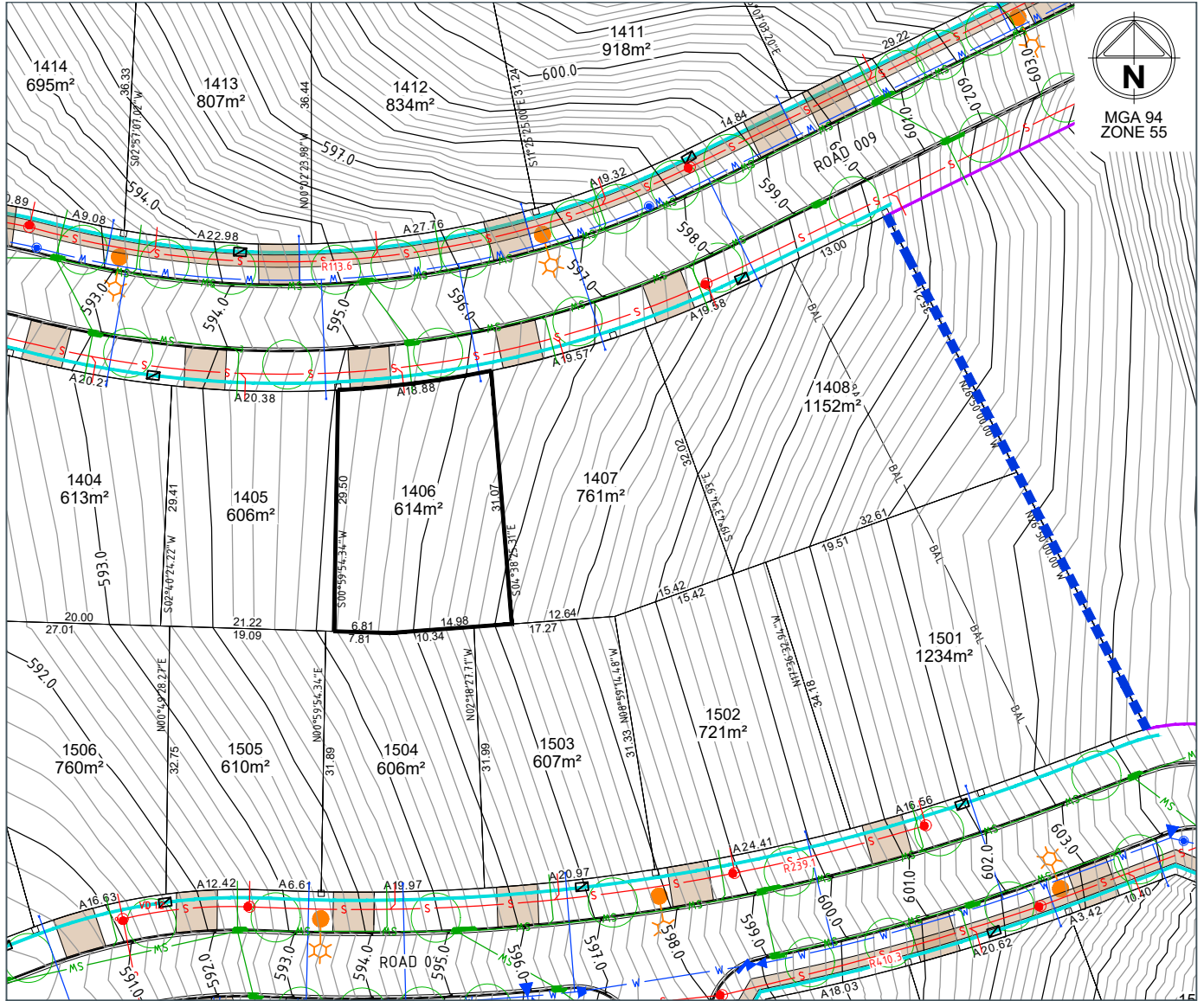
file name: 307857CG350.dwg, layout name: CG35, plot date: 20/05/2022 9:11 AM, Sheet 1 of 1, Sheets

# Jumping Creek

Home is here.

# LOT 1406

## LOT PLAN LAYOUT



LOT LAYOUT - SCALE 1:400 (A4)

REVISION A

DATE 18/05/2022

### LEGEND

LOT BOUNDARY	—	SERVICES TRENCH (Electricity, NBN)	
FINISHED SURFACE CONTOURS (0.2m)	—590—	STREETLIGHT	
BLOCK AREA / BOUNDARY LENGTH	400m² 4.54	SUBSTATION	
BLOCK BEARING	90°00'00"	ELECTRICAL PILLAR / PIT	
EASEMENT (Sewer and/or Stormwater)	---	NBN PIT	
DRAINAGE / STRUCTURE		SUGGESTED DRIVEWAY LOCATION	
SEWER / STRUCTURE			
WATER			

STREET TREE/EXISTING TREE	
PATH (1.5m wide)	
RETAINING WALL	
BAL 29 LINE	
COLOURBOND FENCE (BY DEVELOPER)	
FARM FENCE (BY DEVELOPER)	

### LOCALITY PLAN



**DRAFT**

© Spiire Australia Pty Ltd All Rights Reserved  
 This document is produced by Spiire Australia Pty Ltd solely for the benefit of and use by the client in accordance with the terms of the retainer. Spiire Australia Pty Ltd does not and shall not assume any responsibility or liability whatsoever to any third party arising out of any use or reliance by third party on the content of this document.

Disclaimer: All care has been taken in the preparation of this material. No responsibility is taken by the vendor for any errors or omissions, and details may be subject to change. Artwork, images and plans are artists impressions only and are not relied on as a definitive reference. All road designs, contours, lot sizes, lot dimensions, easements, covenants, trees, streetlights, substations, pit and pillars are preliminary only and are subject to final survey. For final Lot numbers refer registered deposited plans (DP).



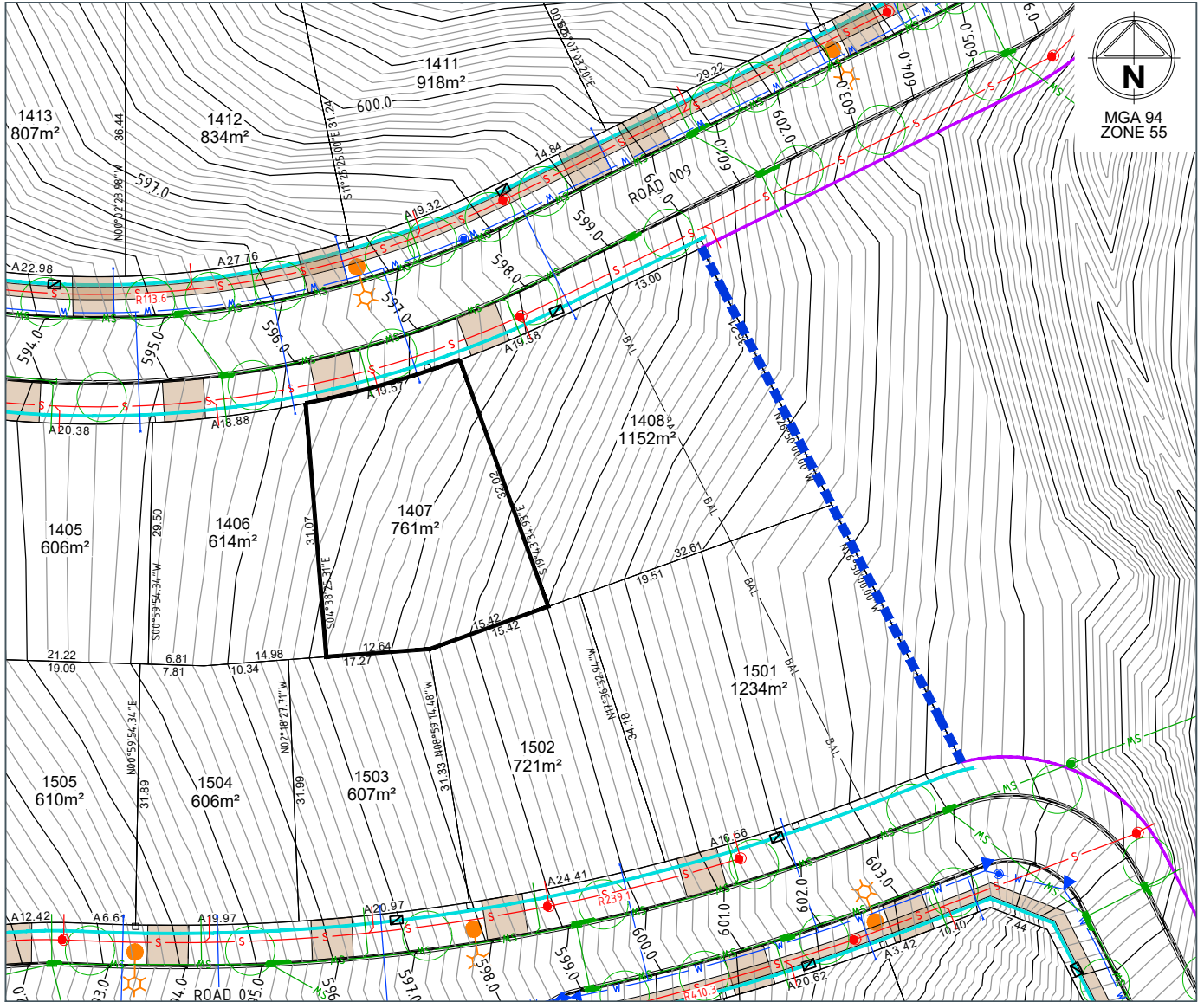
file name: 307857CE3504.dwg; layout name: CE356; date: 20/05/2022 9:11 AM; Sheet 1 of 1; Sheets of 1

# Jumping Creek

Home is here.

# LOT 1407

## LOT PLAN LAYOUT



LOT LAYOUT - SCALE 1:400 (A4)

REVISION A

DATE 18/05/2022

### LEGEND

LOT BOUNDARY	—	SERVICES TRENCH (Electricity, NBN)	—
FINISHED SURFACE	—	STREETLIGHT	☀
CONTOURS (0.2m)	—590—	STATION	□
BLOCK AREA / BOUNDARY LENGTH	400m <sup>2</sup> 4.54	ELECTRICAL PILLAR / PIT	□
BLOCK BEARING	90°00'00"	NBN PIT	□
EASEMENT (Sewer and/or Stormwater)	---	SUGGESTED DRIVEWAY LOCATION	▭
DRAINAGE / STRUCTURE	● SW		
SEWER / STRUCTURE	● S		
WATER	● W		

STREET TREE/EXISTING TREE	○
PATH (1.5m wide)	▭
RETAINING WALL	▭
BAL 29 LINE	—BAL—
COLOURBOND FENCE (BY DEVELOPER)	---
FARM FENCE (BY DEVELOPER)	---

### LOCALITY PLAN



**DRAFT**

© Spiire Australia Pty Ltd All Rights Reserved  
 This document is produced by Spiire Australia Pty Ltd solely for the benefit of and use by the client in accordance with the terms of the retainer. Spiire Australia Pty Ltd does not and shall not assume any responsibility or liability whatsoever to any third party arising out of any use or reliance by third party on the content of this document.

Disclaimer: All care has been taken in the preparation of this material. No responsibility is taken by the vendor for any errors or omissions, and details may be subject to change. Artwork, images and plans are artists impressions only and are not relied on as a definitive reference. All road designs, contours, lot sizes, lot dimensions, easements, covenants, trees, streetlights, substations, pit and pillars are preliminary only and are subject to final survey. For final Lot numbers refer registered deposited plans (DP).



file name: 307857CG350.dwg, layout name: CG357, created by: Benjamin Capelli, date: 20/05/2022 9:11 AM, Sheet 1 of 1, file location: G:\307857\307857\307857\CG357\CG357.dwg