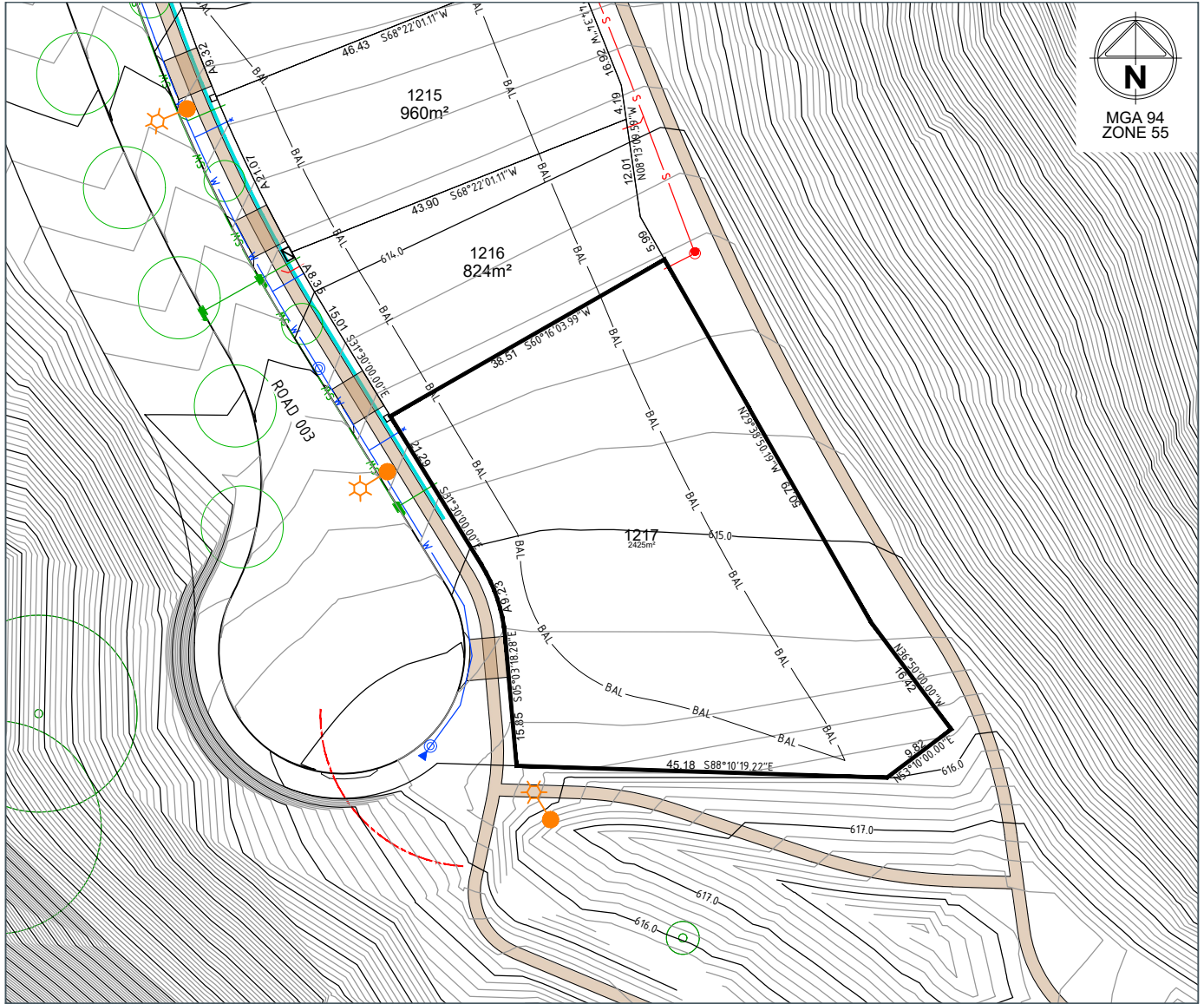


Jumping Creek

Home is here.

LOT 1217

LOT PLAN LAYOUT



LOT LAYOUT - SCALE 1:400 (A4)

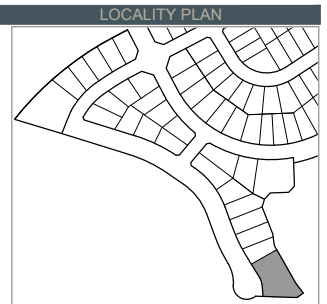
REVISION --- DATE

LEGEND

LOT BOUNDARY	---
FINISHED SURFACE CONTOUR (0.2m)	— 590.0 —
BLOCK AREA / BOUNDARY LENGTH	400m ² 4.54
BLOCK BEARING	90°00'00"
EASEMENT (Sewer and/or Stormwater)	---
DRAINAGE / STRUCTURE	— SW —
SEWER / STRUCTURE	— S —
SEWER RISING MAIN	— SRM —

WATER SERVICES TRENCH (Electricity, NBN)	— W —
STREETLIGHT	☀
SUBSTATION	☐
ELECTRICAL PILLAR / PIT	⊠
NBN PIT	⊠
DRIVEWAY LOCATION	☐

STREET TREE/EXISTING TREE	⊙
PATH (1.5m wide)	—
RETAINING WALL	—
BAL 29 LINE	— BAL —
1.8m HIGH COLOURBOND FENCE BY DEVELOPER	—



DRAFT

© Spiire Australia Pty Ltd All Rights Reserved
 This document is produced by Spiire Australia Pty Ltd solely for the benefit of and use by the client in accordance with the terms of the retainer. Spiire Australia Pty Ltd does not and shall not assume any responsibility or liability whatsoever to any third party arising out of any use or reliance by third party on the content of this document.

Disclaimer: All care has been taken in the preparation of this material. No responsibility is taken by the vendor for any errors or omissions, and details may be subject to change. Artwork, images and plans are artists impressions only and are not relied on as a definitive reference. All road designs, contours, lot sizes, lot dimensions, easements, covenants, trees, streetlights, substations, pit and pillars are preliminary only and are subject to final survey. For final Lot numbers refer registered deposited plans (DP).



file name: 307857CG000.dwg, layout name: CG000, plotted by: Carl O'Hara, file location: G:\307857\307857\Drawings\CAD\Lot_Disclosure_Plan\CAD plot_date: 03/09/2021 3:25 PM Sheet of Sheets