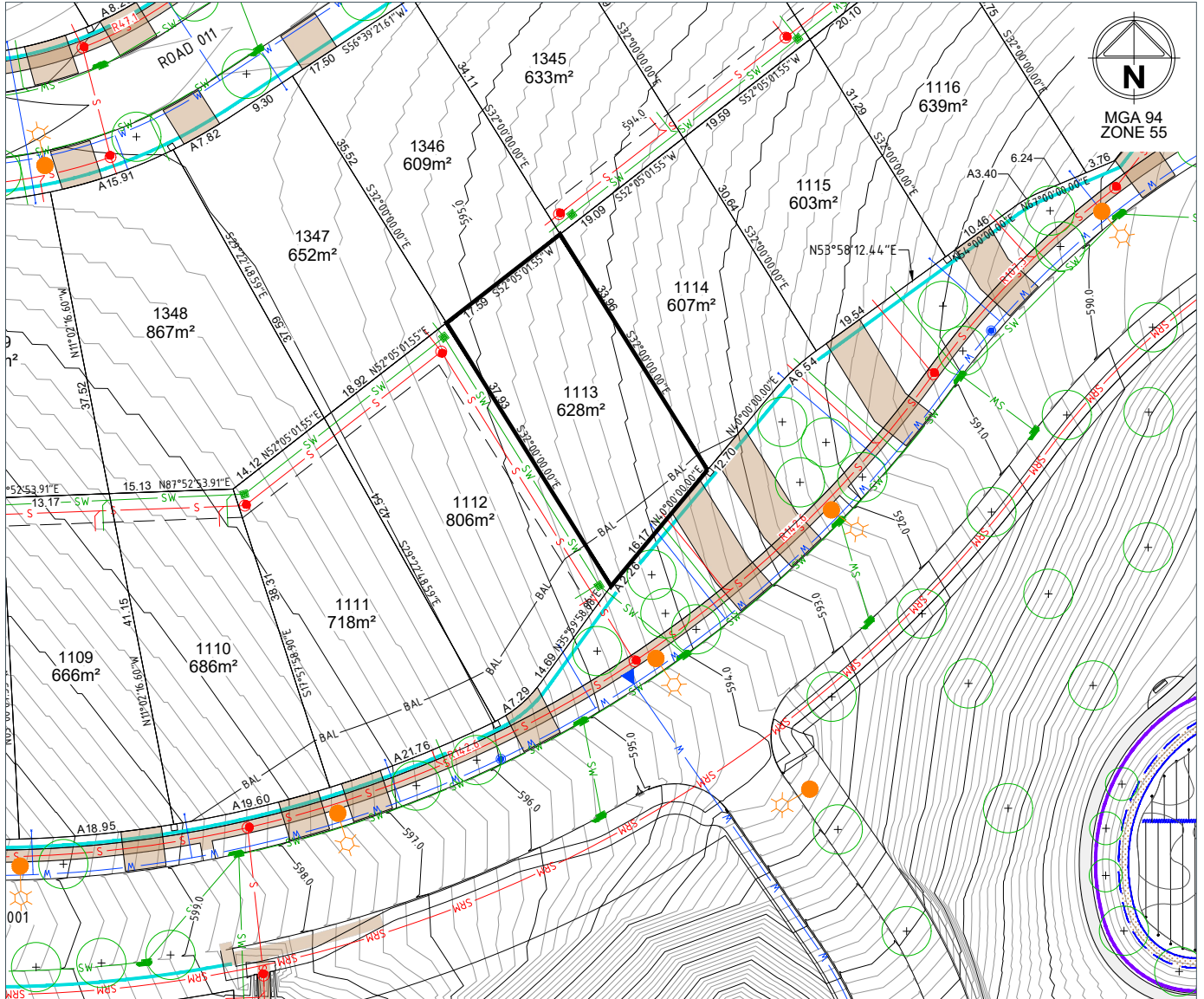


Jumping Creek

Home is here.

LOT 1113

LOT PLAN LAYOUT



LOT LAYOUT - SCALE 1:400 (A4)

REVISION 02

DATE 01/02/2022

LEGEND

LOT BOUNDARY	—	WATER SERVICES TRENCH (Electricity, NBN)	— W —
FINISHED SURFACE CONTOUR (0.2m)	— 590.0 —	STREETLIGHT	☀
BLOCK AREA / BOUNDARY LENGTH	400m² 4.54	SUBSTATION	☐
BLOCK BEARING	90°00'00"	ELECTRICAL PILLAR / PIT	⊕
EASEMENT (Sewer and/or Stormwater)	---	SUGGESTED DRIVEWAY LOCATION	▭
DRAINAGE / STRUCTURE	— SW —		
SEWER / STRUCTURE	— S —		
SEWER RISING MAIN	— SRM —		

STREET TREE/EXISTING TREE	⊙
PATH (1.5m wide)	—
RETAINING WALL	— BAL —
BAL 29 LINE	— BAL —

LOCALITY PLAN



DRAFT

© Spiire Australia Pty Ltd All Rights Reserved
 This document is produced by Spiire Australia Pty Ltd solely for the benefit of and use by the client in accordance with the terms of the retainer. Spiire Australia Pty Ltd does not and shall not assume any responsibility or liability whatsoever to any third party arising out of any use or reliance by third party on the content of this document.

Disclaimer: All care has been taken in the preparation of this material. No responsibility is taken by the vendor for any errors or omissions, and details may be subject to change. Artwork, images and plans are artists impressions only and are not relied on as a definitive reference. All road designs, contours, lot sizes, lot dimensions, easements, covenants, trees, streetlights, substations, pit and pillars are preliminary only and are subject to final survey. For final Lot numbers refer registered deposited plans (DP).



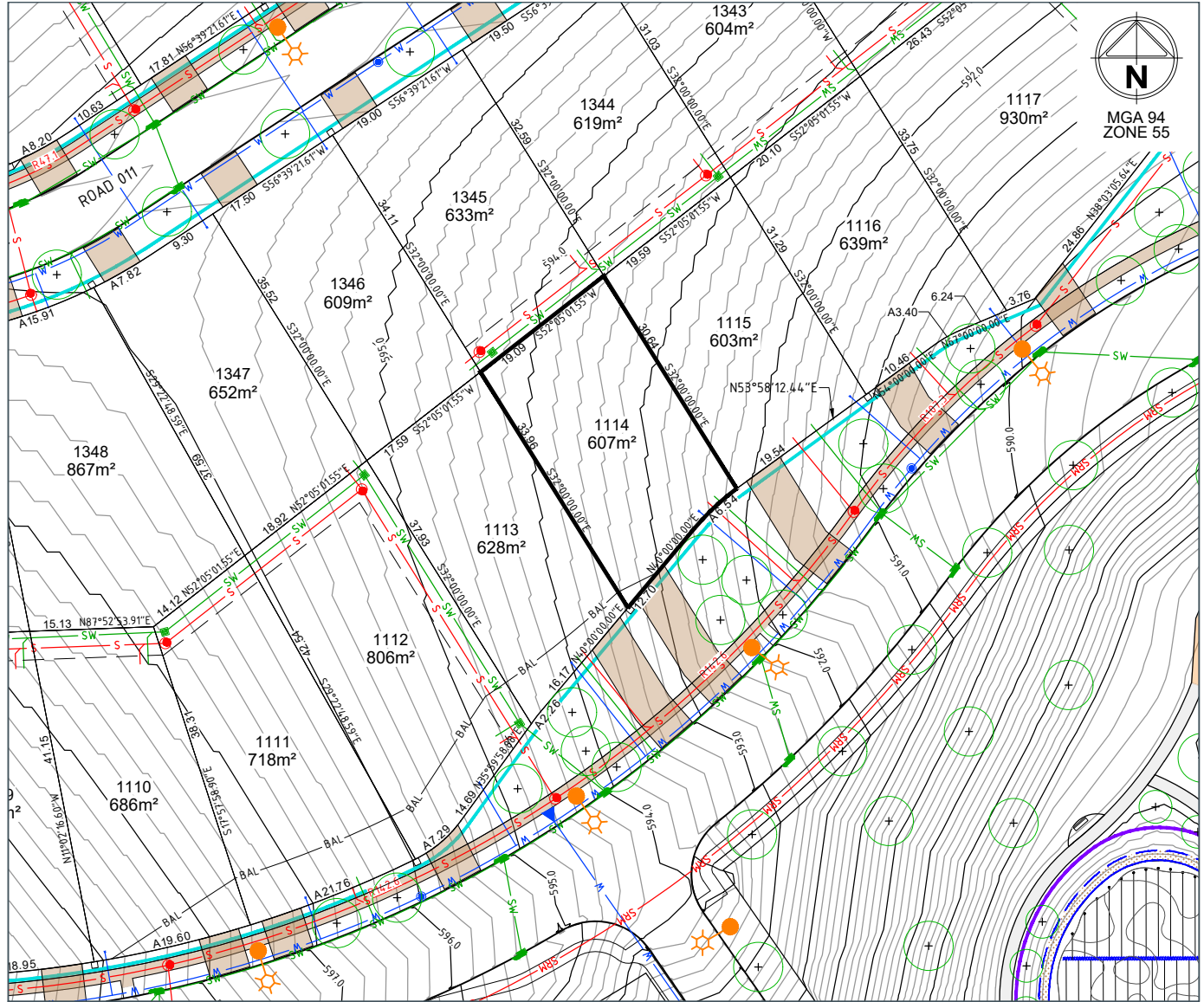
file name: 307857CG000.dwg, layout name: CG00, plotted by: Mst. Baker, file location: \\Spiire\Vendor\A\B\A\307857CG000.dwg, Plot date: 01/02/2022 3:57 PM, Sheet 1 of 1

Jumping Creek

Home is here.

LOT 1114

LOT PLAN LAYOUT



LOT LAYOUT - SCALE 1:400 (A4)

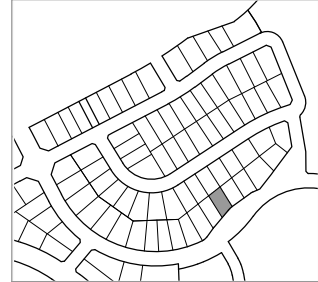
REVISION 02

DATE 01/02/2022

LEGEND

- LOT BOUNDARY ———
- FINISHED SURFACE CONTOUR (0.2m) —590.0—
- BLOCK AREA / BOUNDARY LENGTH 400m² 4.54
- BLOCK BEARING 90°00'00"
- EASEMENT (Sewer and/or Stormwater) - - - - -
- DRAINAGE / STRUCTURE
- SEWER / STRUCTURE
- SEWER RISING MAIN
- WATER SERVICES TRENCH (Electricity, NBN)
- STREETLIGHT
- SUBSTATION
- ELECTRICAL PILLAR / PIT
- SUGGESTED DRIVEWAY LOCATION
- STREET TREE/EXISTING TREE
- PATH (1.5m wide)
- RETAINING WALL
- BAL 29 LINE

LOCALITY PLAN



DRAFT

© Spiire Australia Pty Ltd All Rights Reserved
 This document is produced by Spiire Australia Pty Ltd solely for the benefit of and use by the client in accordance with the terms of the retainer. Spiire Australia Pty Ltd does not and shall not assume any responsibility or liability whatsoever to any third party arising out of any use or reliance by third party on the content of this document.

Disclaimer: All care has been taken in the preparation of this material. No responsibility is taken by the vendor for any errors or omissions, and details may be subject to change. Artwork, images and plans are artists impressions only and are not relied on as a definitive reference. All road designs, contours, lot sizes, lot dimensions, easements, covenants, trees, streetlights, substations, pit and pillars are preliminary only and are subject to final survey. For final Lot numbers refer registered deposited plans (DP).



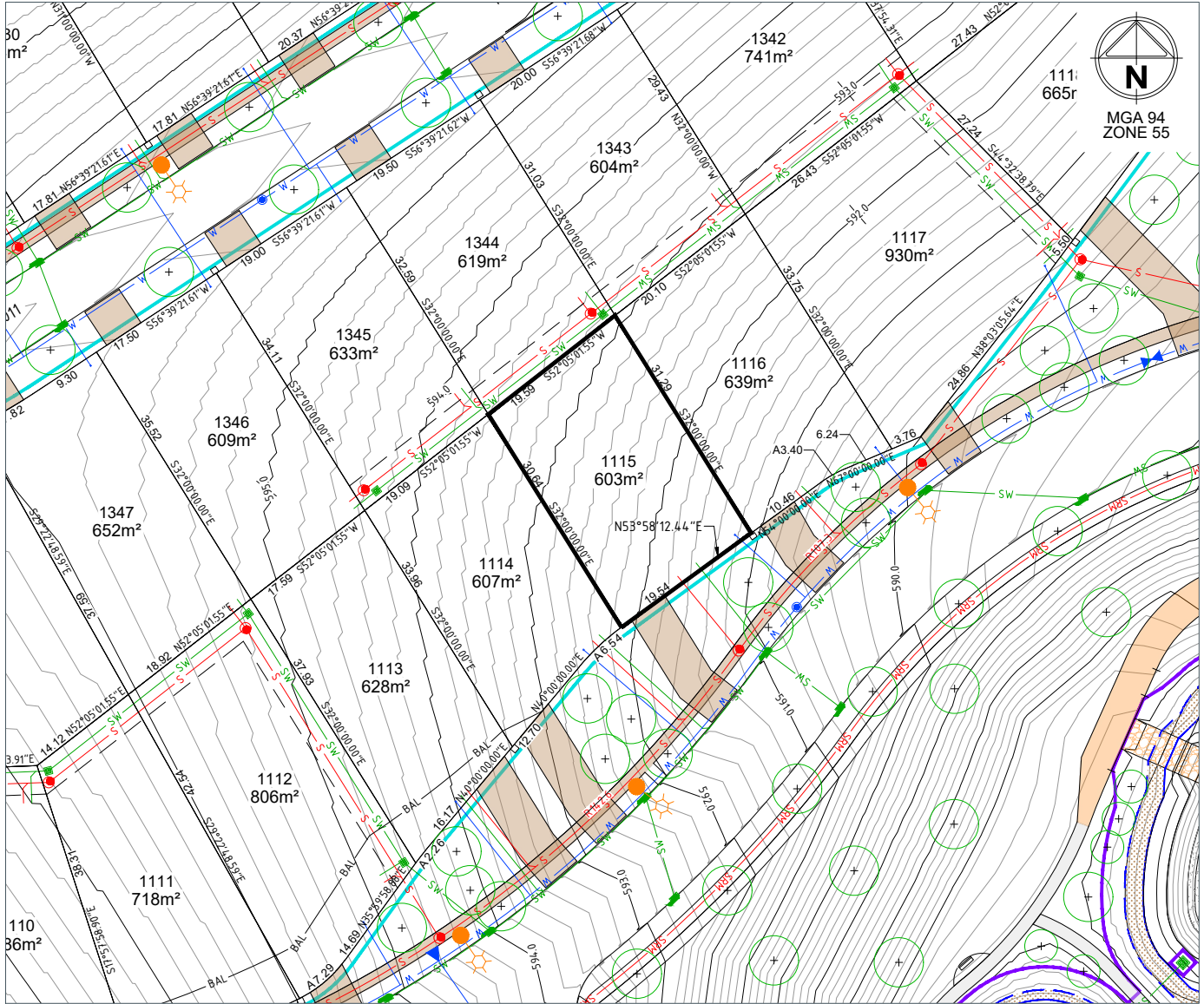
file name: 307857CG000.dwg; layout name: CG01; file location: \\Spiire\Vendor\Draw\307857CG000.dwg; Plot date: 01/02/2022 3:59 PM; Sheet of Sheets

Jumping Creek

Home is here.

LOT 1115

LOT PLAN LAYOUT



LOT LAYOUT - SCALE 1:400 (A4)

REVISION 02

DATE 01/02/2022

LEGEND

- | | | | |
|------------------------------------|------------------------|--|-------|
| LOT BOUNDARY | — | WATER SERVICES TRENCH (Electricity, NBN) | — W — |
| FINISHED SURFACE CONTOUR (0.2m) | — 590.0 — | STREETLIGHT | ⊙ |
| BLOCK AREA / BOUNDARY LENGTH | 400m ² 4.54 | SUBSTATION | ⊞ |
| BLOCK BEARING | 90°00'00" | ELECTRICAL PILLAR / PIT | ⊞ |
| EASEMENT (Sewer and/or Stormwater) | --- | SUGGESTED DRIVEWAY LOCATION | ⊞ |
| DRAINAGE / STRUCTURE | — SW — | | |
| SEWER / STRUCTURE | — S — | | |
| SEWER RISING MAIN | — SRM — | | |

- | | |
|---------------------------|---------|
| STREET TREE/EXISTING TREE | ⊙ |
| PATH (1.5m wide) | — |
| RETAINING WALL | — BAL — |
| BAL 29 LINE | — BAL — |

LOCALITY PLAN



DRAFT

© Spiire Australia Pty Ltd All Rights Reserved
 This document is produced by Spiire Australia Pty Ltd solely for the benefit of and use by the client in accordance with the terms of the retainer. Spiire Australia Pty Ltd does not and shall not assume any responsibility or liability whatsoever to any third party arising out of any use or reliance by third party on the content of this document.

Disclaimer: All care has been taken in the preparation of this material. No responsibility is taken by the vendor for any errors or omissions, and details may be subject to change. Artwork, images and plans are artists impressions only and are not relied on as a definitive reference. All road designs, contours, lot sizes, lot dimensions, easements, covenants, trees, streetlights, substations, pit and pillars are preliminary only and are subject to final survey. For final Lot numbers refer registered deposited plans (DP).



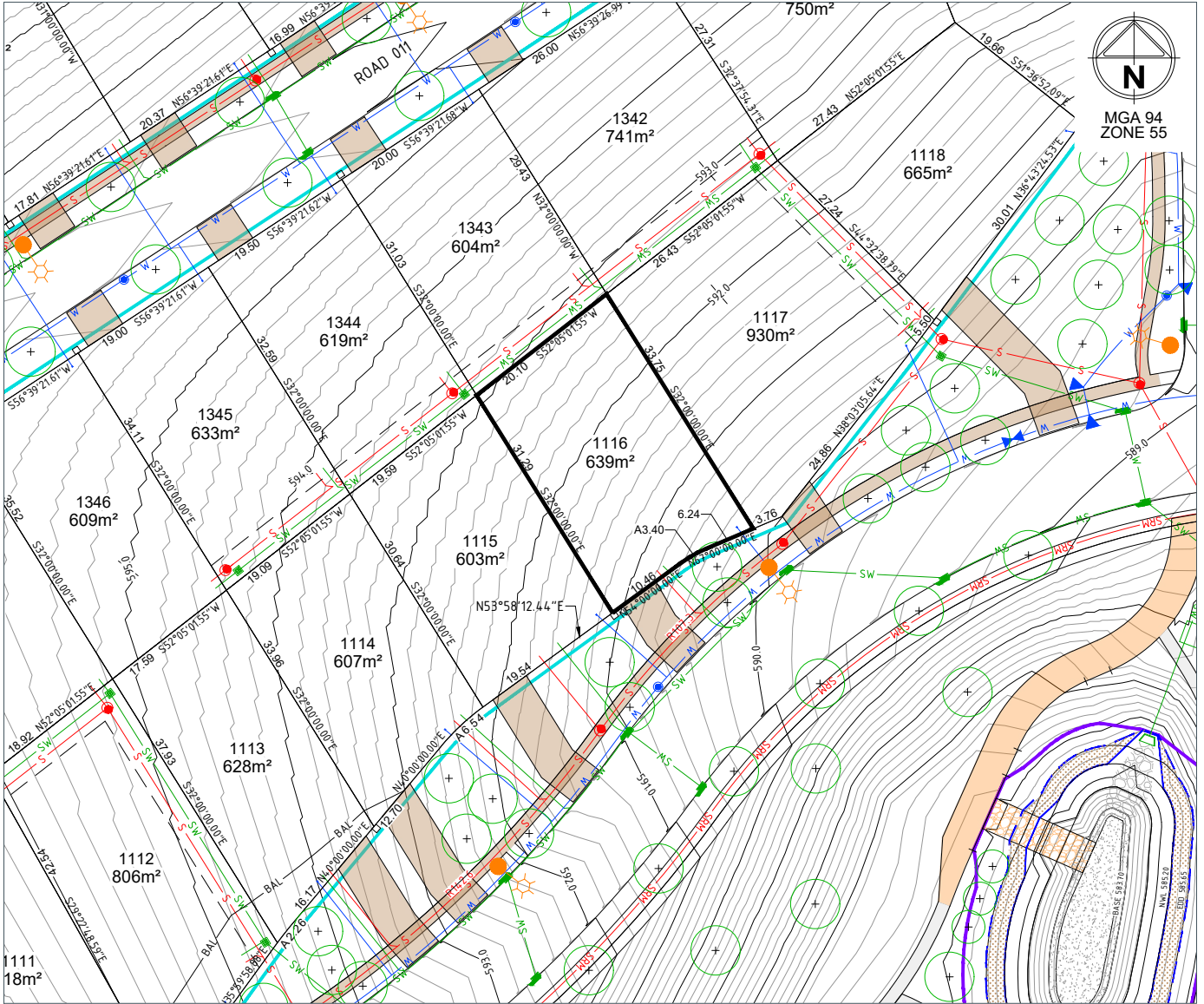
file name: 307857CG000.dwg, layout name: C606E, plotted by: Mst. Baker, file location: \\Spiire\canda\al\ba\307857CG000.dwg, Plot date: 01/02/2022 3:59 PM, Sheet 1 of 1

Jumping Creek

Home is here.

LOT 1116

LOT PLAN LAYOUT



LOT LAYOUT - SCALE 1:400 (A4)

REVISION 02

DATE 01/02/2022

LEGEND

LOT BOUNDARY	—
FINISHED SURFACE	—
CONTOUR (0.2m)	—590.0—
BLOCK AREA /	400m ² 4.54
BOUNDARY LENGTH	90°00'00"
BLOCK BEARING	---
EASEMENT (Sewer and/or	---
Stormwater)	---
DRAINAGE / STRUCTURE	SW
SEWER / STRUCTURE	S
SEWER RISING MAIN	SRM

WATER	W
SERVICES TRENCH	—
(Electricity, NBN)	—
STREETLIGHT	⊙
SUBSTATION	⊙
ELECTRICAL PILLAR / PIT	⊙
SUGGESTED DRIVEWAY	⊙
LOCATION	⊙

STREET TREE/EXISTING	⊙
TREE	⊙
PATH (1.5m wide)	—
RETAINING WALL	—
BAL 29 LINE	BAL

LOCALITY PLAN



DRAFT

© Spiire Australia Pty Ltd All Rights Reserved

This document is produced by Spiire Australia Pty Ltd solely for the benefit of and use by the client in accordance with the terms of the retainer. Spiire Australia Pty Ltd does not and shall not assume any responsibility or liability whatsoever to any third party arising out of any use or reliance by third party on the content of this document.

Disclaimer: All care has been taken in the preparation of this material. No responsibility is taken by the vendor for any errors or omissions, and details may be subject to change. Artwork, images and plans are artists impressions only and are not relied on as a definitive reference. All road designs, contours, lot sizes, lot dimensions, easements, covenants, trees, streetlights, substations, pit and pillars are preliminary only and are subject to final survey. For final Lot numbers refer registered deposited plans (DP).

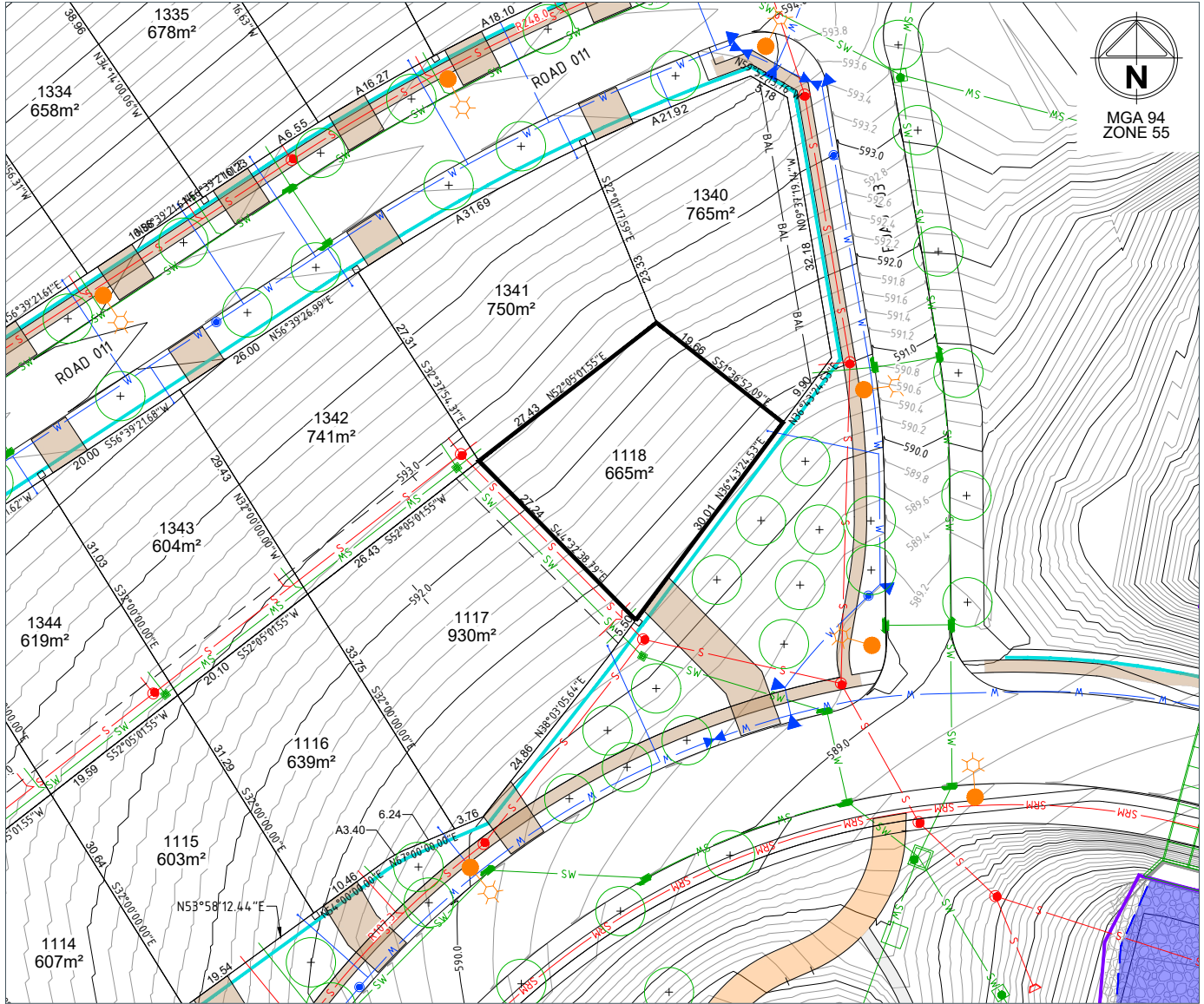


Jumping Creek

Home is here.

LOT 1118

LOT PLAN LAYOUT



LOT LAYOUT - SCALE 1:400 (A4)

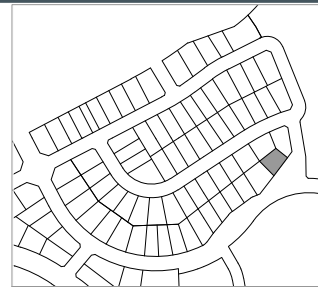
REVISION 02

DATE 01/02/2022

LEGEND

- LOT BOUNDARY ———
- FINISHED SURFACE CONTOUR (0.2m) — 590.0 —
- BLOCK AREA / BOUNDARY LENGTH 400m² 4.54
- BLOCK BEARING 90°00'00"
- EASEMENT (Sewer and/or Stormwater) - - - - -
- DRAINAGE / STRUCTURE SW
- SEWER / STRUCTURE S
- SEWER RISING MAIN SRM
- WATER SERVICES TRENCH (Electricity, NBN) W
- STREETLIGHT
- SUBSTATION
- ELECTRICAL PILLAR / PIT
- SUGGESTED DRIVEWAY LOCATION
- STREET TREE/EXISTING TREE
- PATH (1.5m wide)
- RETAINING WALL
- BAL 29 LINE

LOCALITY PLAN



DRAFT

© Spiire Australia Pty Ltd All Rights Reserved
 This document is produced by Spiire Australia Pty Ltd solely for the benefit of and use by the client in accordance with the terms of the retainer. Spiire Australia Pty Ltd does not and shall not assume any responsibility or liability whatsoever to any third party arising out of any use or reliance by third party on the content of this document.

Disclaimer: All care has been taken in the preparation of this material. No responsibility is taken by the vendor for any errors or omissions, and details may be subject to change. Artwork, images and plans are artists impressions only and are not relied on as a definitive reference. All road designs, contours, lot sizes, lot dimensions, easements, covenants, trees, streetlights, substations, pit and pillars are preliminary only and are subject to final survey. For final Lot numbers refer registered deposited plans (DP).



file name: 307857CG000.dwg; layout: asms_CG018; file location: \\spiire\canda\data\307857CG000\vacad\lot_1118\vacad\lot_1118.dwg; plot date: 01/02/2022 4:00 PM; Sheet of: Sheets